

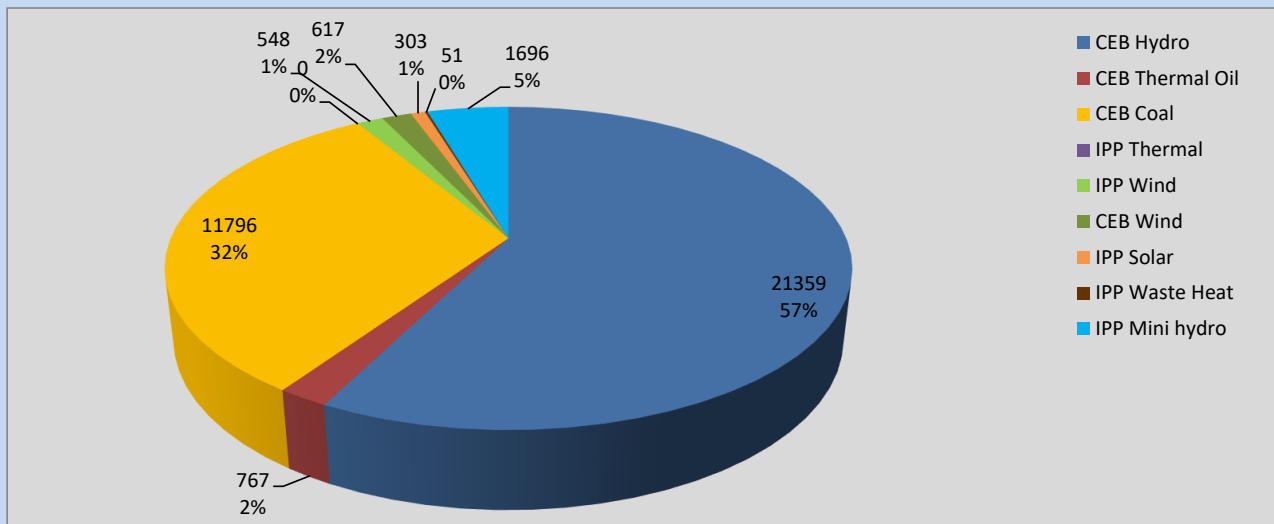
Generation and Reservoirs Statistics

October 14, 2022



PUBLIC UTILITIES COMMISSION OF SRI LANKA

Daily Generation Mix in MWh



Total Generation **37,137 MWh**

Note: Above data is excluding contribution from Roof Top Solar, 1MW Solar and certain Mini Hydro plants

Cumulative Dispatch

Note: Following data is Excluding contribution from Roof Top Solar, 1MW solar and Mini Hydro plants

For Current Month

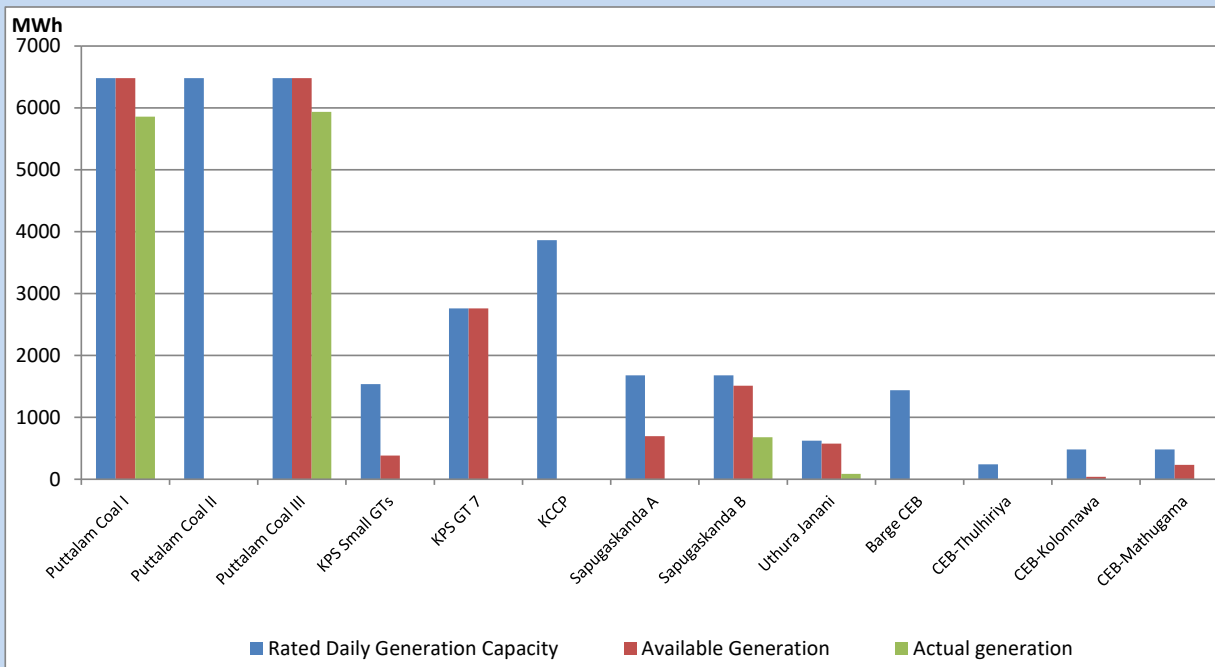
Category	Dispatch (GWh)	
CEB Hydro	258.82	48.89%
CEB Thermal Oil	38.12	7.20%
CEB Coal	172.04	32.50%
IPP Thermal	7.12	1.35%
SPP Wind	13.19	2.49%
CEB Wind	12.64	2.39%
SPP Solar	3.90	0.74%
SPP Solid Waste	2.12	0.40%
Mini Hydro	21.40	4.04%
Total	529.35	

For Current Year

Category	Dispatch (GWh)	
CEB Hydro	3,959.0	34.13%
CEB Thermal Oil	1,216.8	10.49%
CEB Coal	4,213.2	36.32%
IPP Thermal	1,082.9	9.34%
SPP Wind	294.2	2.54%
CEB Wind	318.7	2.75%
SPP Solar	75.3	0.65%
SPP Solid Waste	57.0	0.49%
Mini Hydro	381.9	3.29%
Total	11,598.7	

CEB owned Thermal Plant Dispatch

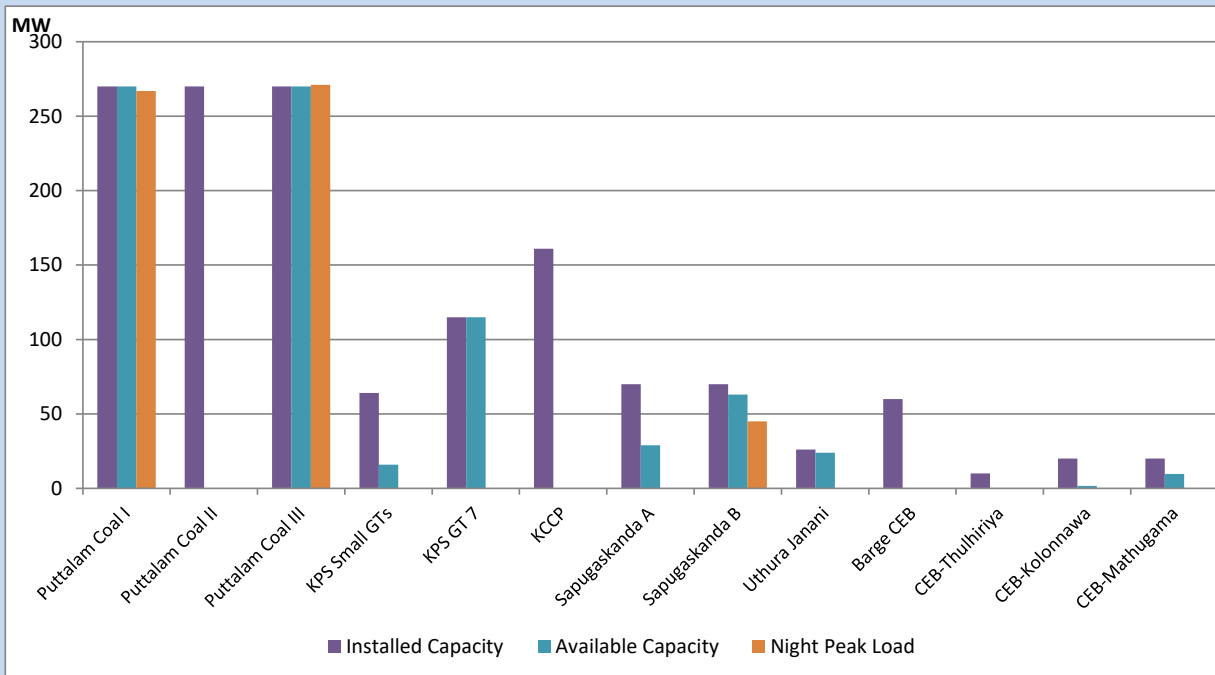
October 14, 2022



Available Generation is estimated based on plant availability at 6.00am on

October 15, 2022

CEB owned Thermal Plant Loading at the Night Peak



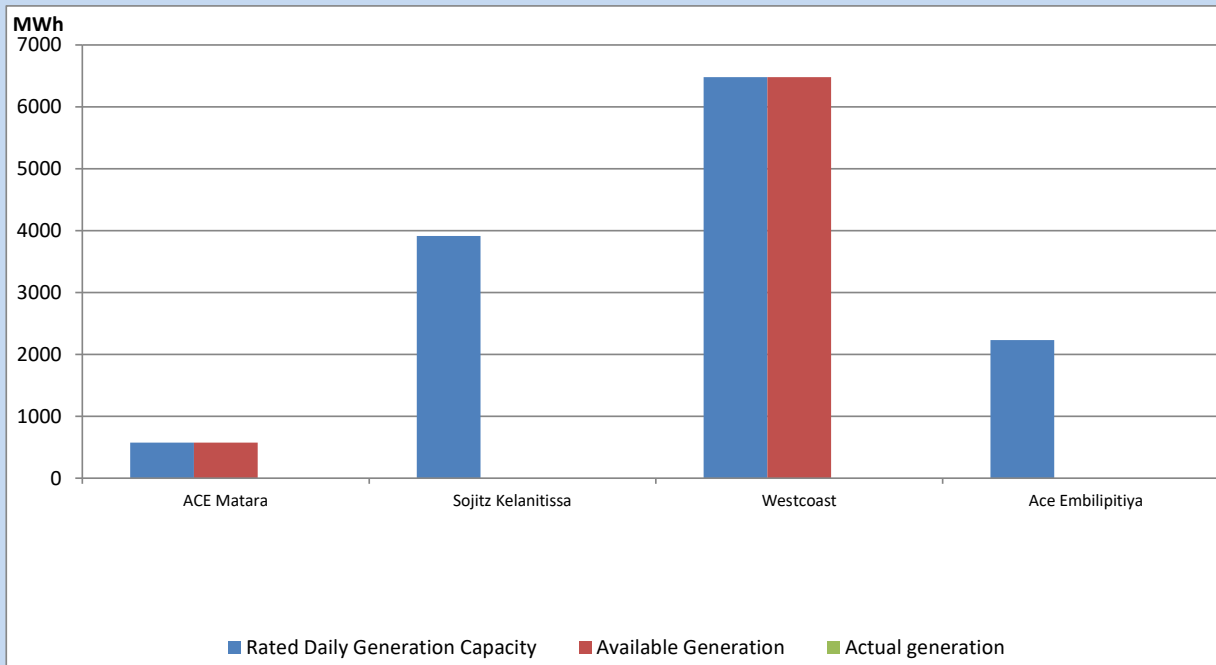
Note- Plant availability is recorded at 6.00 am on

October 15, 2022

IPP owned Thermal Plant Dispatch

October 14, 2022

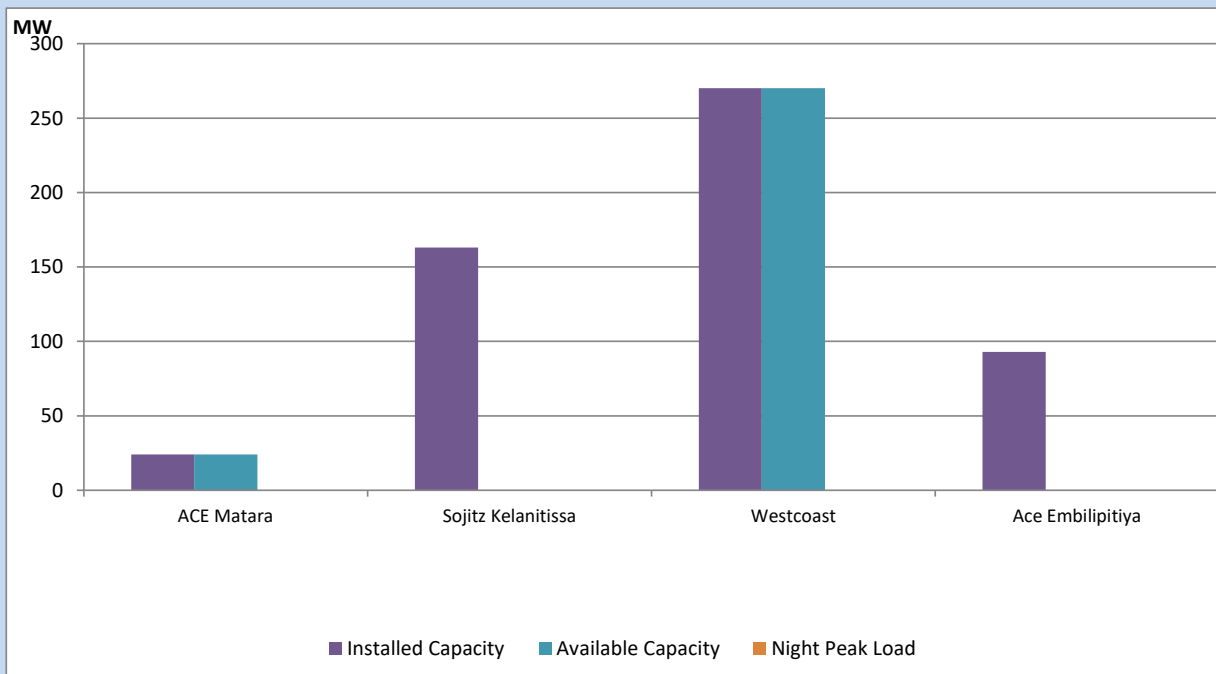
Asia Power, V Power Pallekale, Vpower Galle, V Power Horana, Vpower Hambantota, Vpower Valachchena and Altaqa Mahiyanganaya are not available due to expiration of PPAs



Available Generation is estimated based on plant availability at 6.00am on

October 15, 2022

IPP owned Thermal Plant Loading at the Night Peak

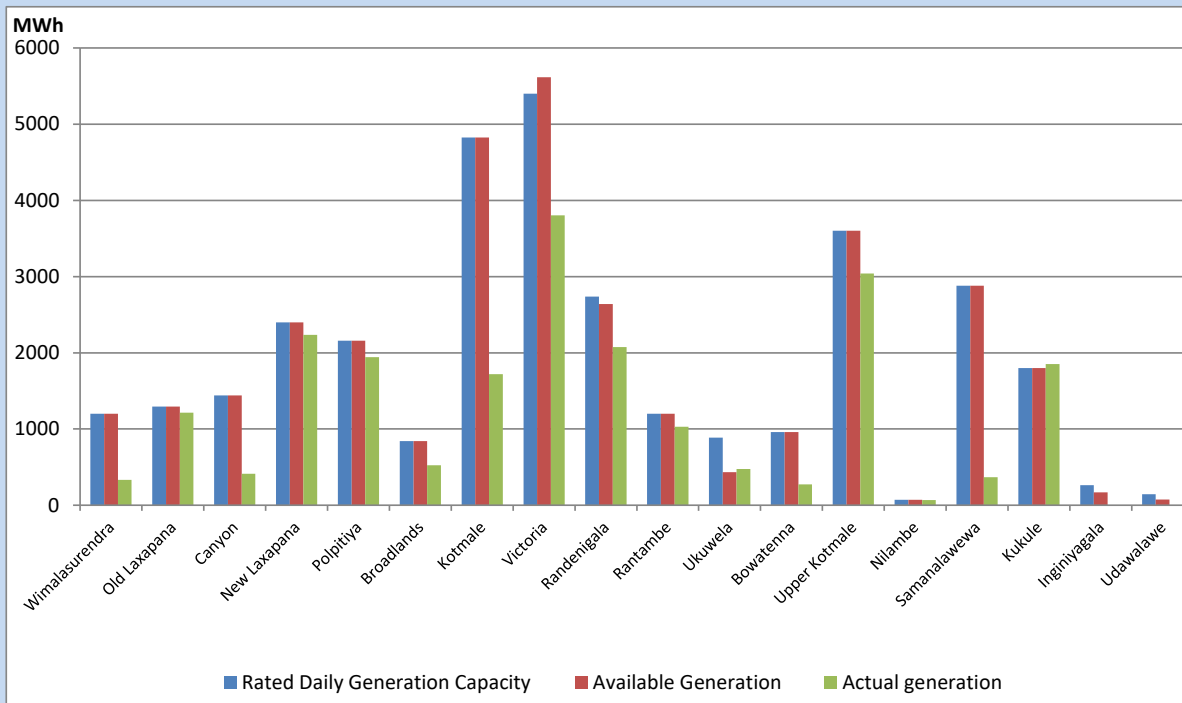


Note- Plant availability is recorded at 6.00 am on

October 15, 2022

Major Hydro Plant Dispatch

October 14, 2022

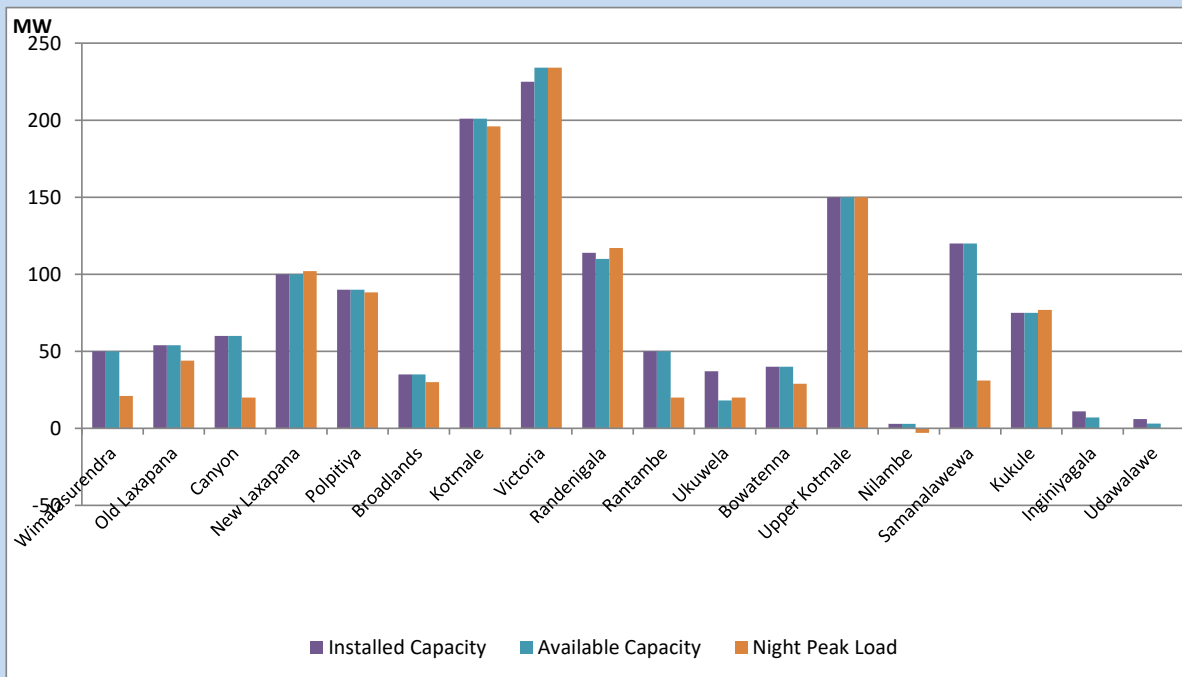


Available Generation is estimated based on plant availability at 6.00am on
Broadlands power plant is operating in the Commissioning Stage

October 15, 2022

Major Hydro Plant Loading at Night Peak

October 14, 2022



Note- Plant availability is recorded at 6.00 am on
Broadlands power plant is operating in the Commissioning Stage

October 15, 2022

Summary of Major Plant performance

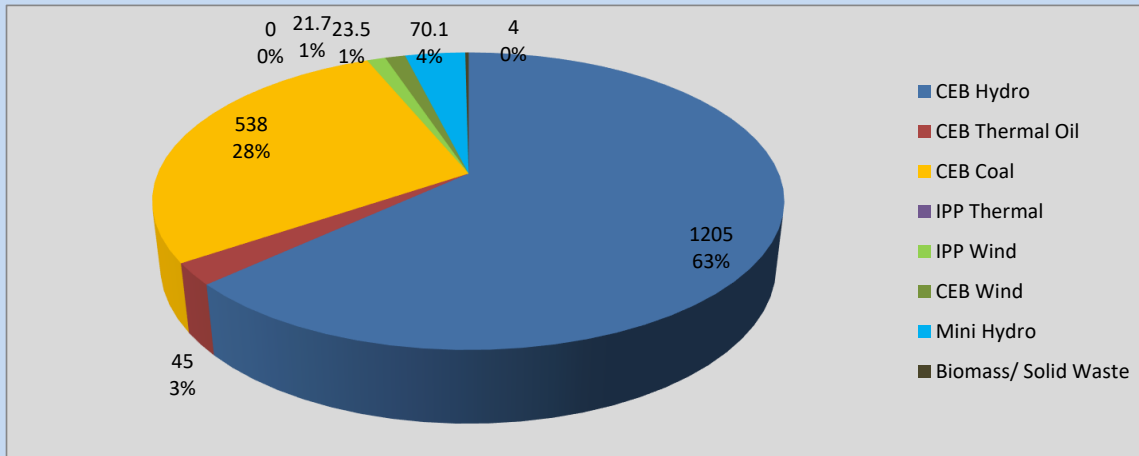
Plant	Installed Capacity	Plant Availability	Night peak Load	Plant Dispatch
	(MW)	(MW)	(MW)	(MWh)
Wimalasurendra	50	50	21	331
Old Laxapana	54	54	44	1,213
Canyon	60	60	20	411
New Laxapana	100	100	102	2,237
Polpitiya	90	90	88	1,941
Broadlands	35	35	30	523
Kotmale	201	201	196	1,720
Victoria	225	234	234	3,804
Randenigala	114	110	117	2,075
Rantambe	50	50	20	1,029
Ukuwela	37	18	20	474
Bowatenna	40	40	29	273
Upper Kotmale	150	150	150	3,039
Nilambe	3	3	-3	68
Samanalawewa	120	120	31	369
Kukule	75	75	77	1,852
Inginiyagala	11	7	0	0
Udawalawe	6	3	0	0
Puttalam Coal I	270	270	267	5,860
Puttalam Coal II	270	0	0	0
Puttalam Coal III	270	270	271	5,936
KPS Small GTs	64	16	0	0
KPS GT 7	115	115	0	0
KCCP	161	0	0	0
Sapugaskanda A	70	29	0	0
Sapugaskanda B	70	63	45	678
Uthura Janani	26	24	0	89
Barge CEB	60	0	0	0
CEB-Thulhiriya	10	0	0	0
CEB-Kolonnawa	20	2	0	0
CEB-Mathugama	20	10	0	0
ACE Matara	24	24	0	0
Sojitz Kelanitissa	163	0	0	0
West Coast	270	270	0	0
ACE Embilipitiya	93	0	0	0
Total	3,397	2,492	1,879	37,137

Plant availability is the availability recorded at 6 am on

October 15, 2022

Contribution to the Night Peak in MW

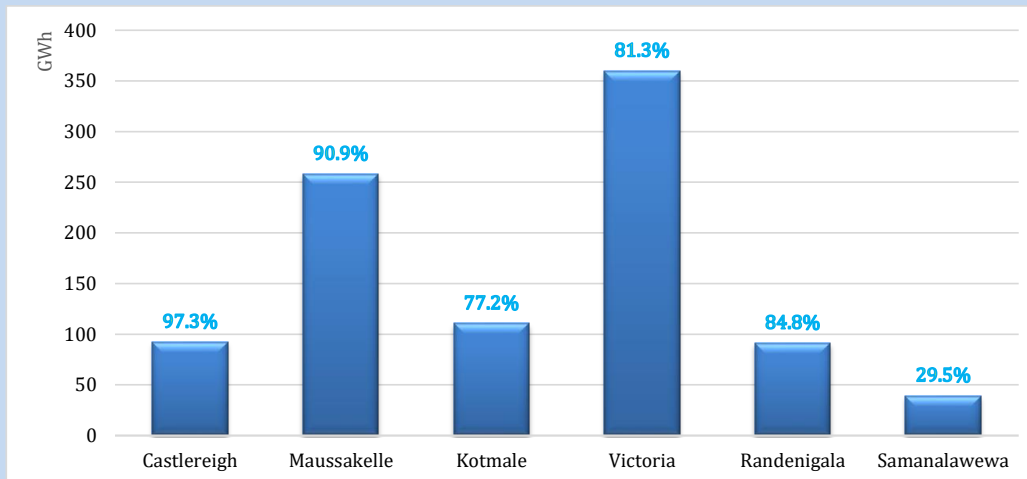
October 14, 2022



Night Peak*	1,907.5 MW
Day Peak	1,820.8 MW
Minimum Demand	1,034.7 MW

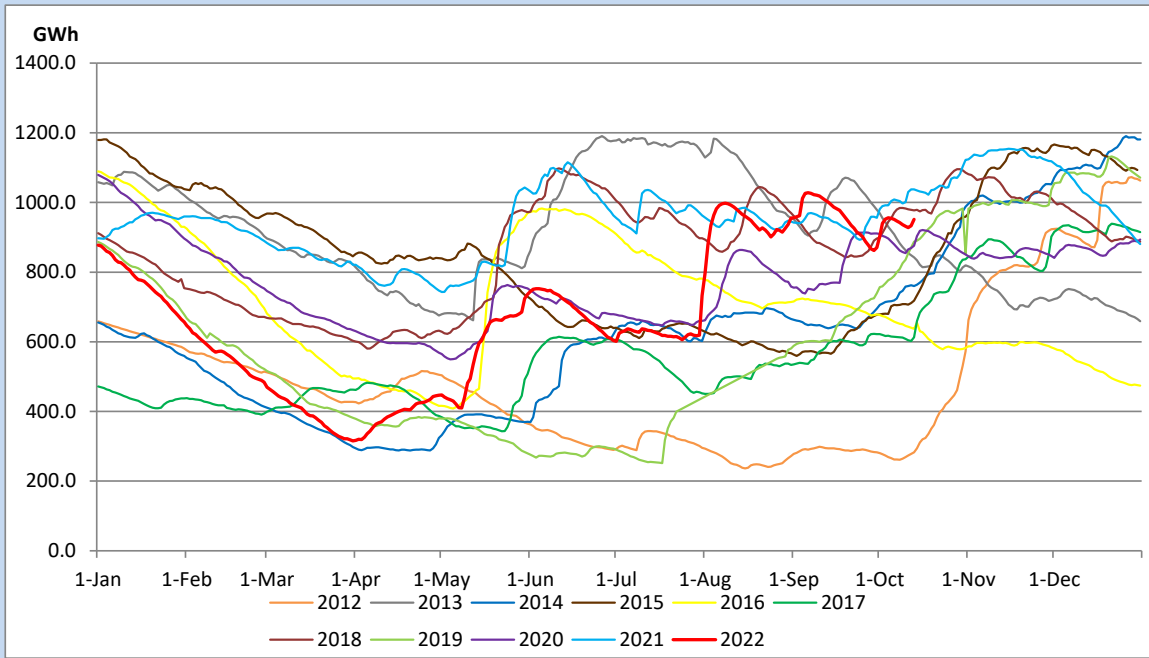
Above figures are excluding contribution from Roof Top Solar, 1MW solar, certain Wind plants and Mini Hydro plants

Reservoir Levels - as at 06.00 Hr on October 15, 2022

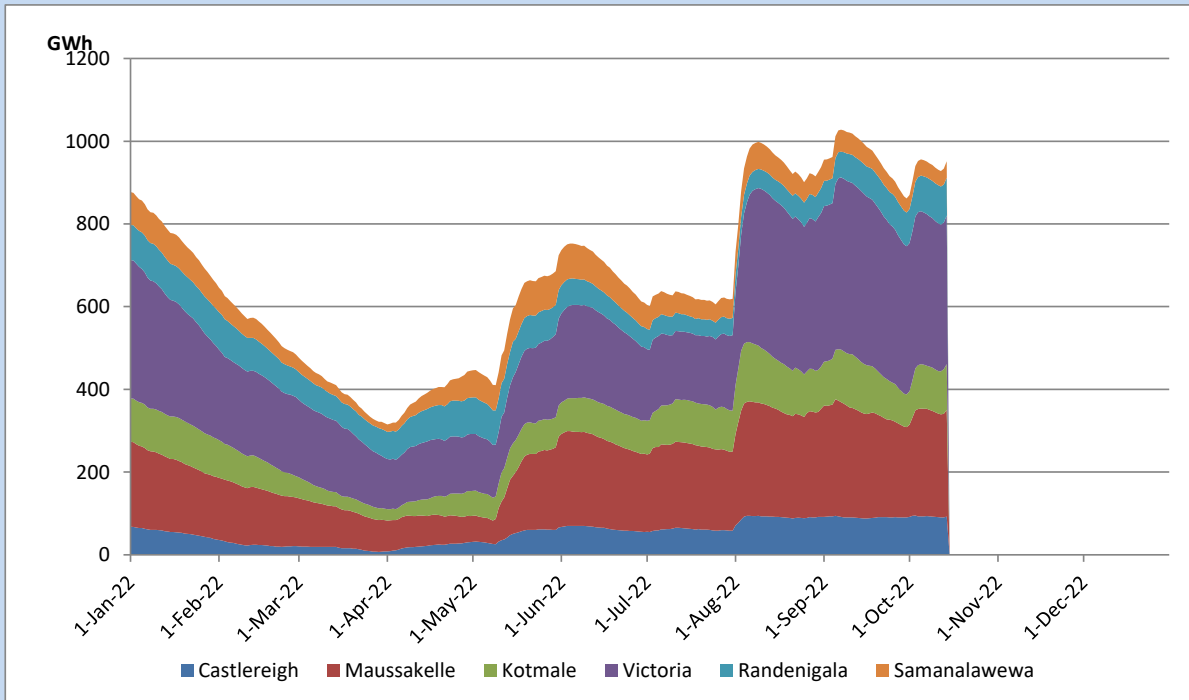


Total Reservoir Level	951.3 GWh
% of Total capacity	78.9%

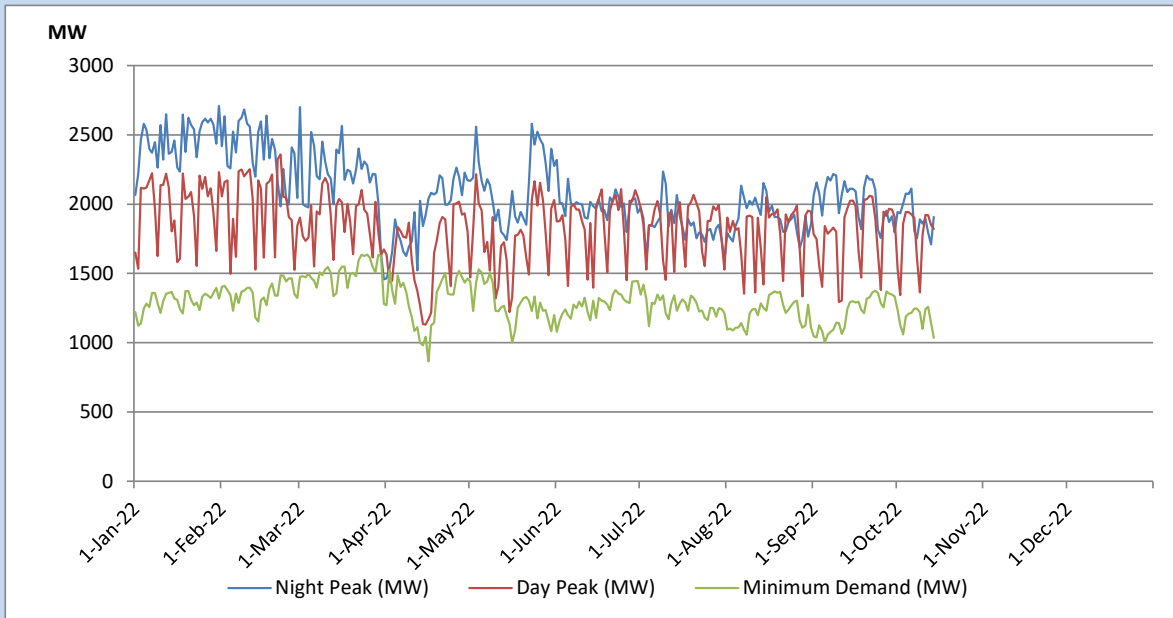
Comparison of Total Reservoir Storage Levels with Past Years



Variation of Major Hydro Reservoir Levels in the current year (GWh)



Variation of Demand during the current year

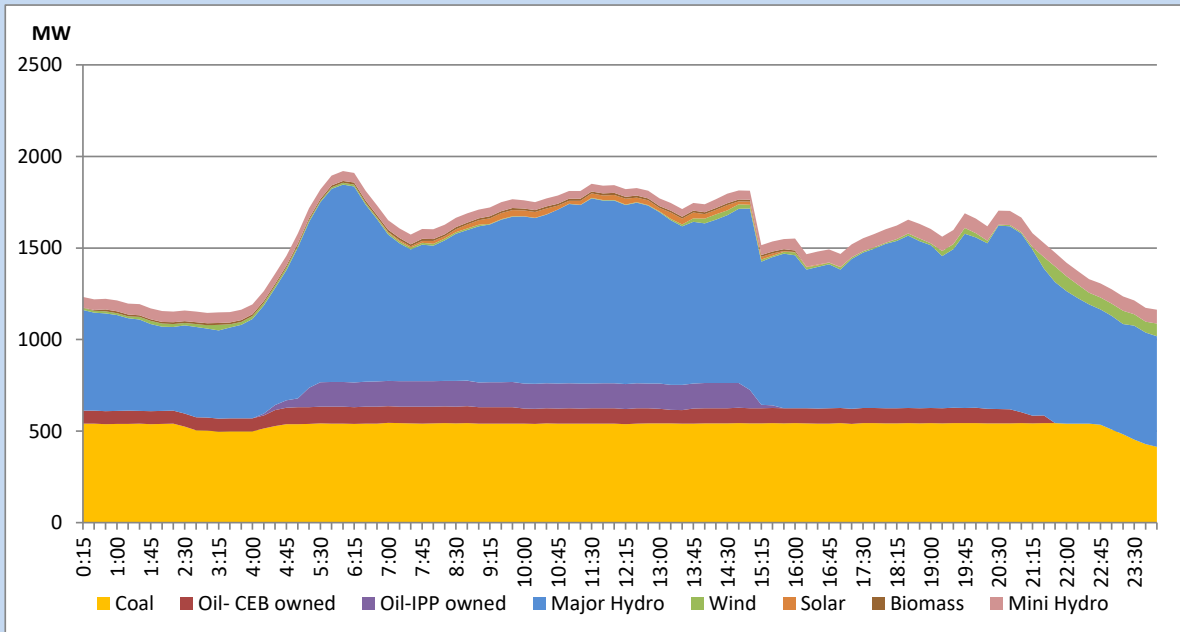


The above figures are excluding contribution from Roof Top Solar, 1MW solar, certain Wind plants and Mini Hydro plants

Daily Load Curve of the Previous day

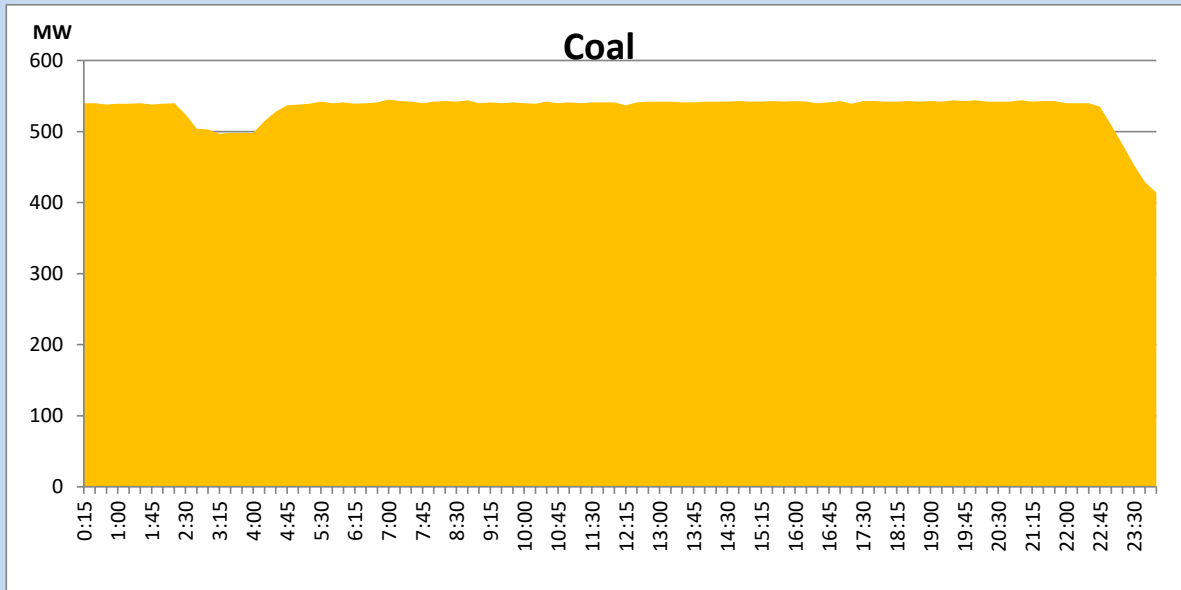
October 13, 2022

Solar and wind data is based on Telemetered Power Stations only



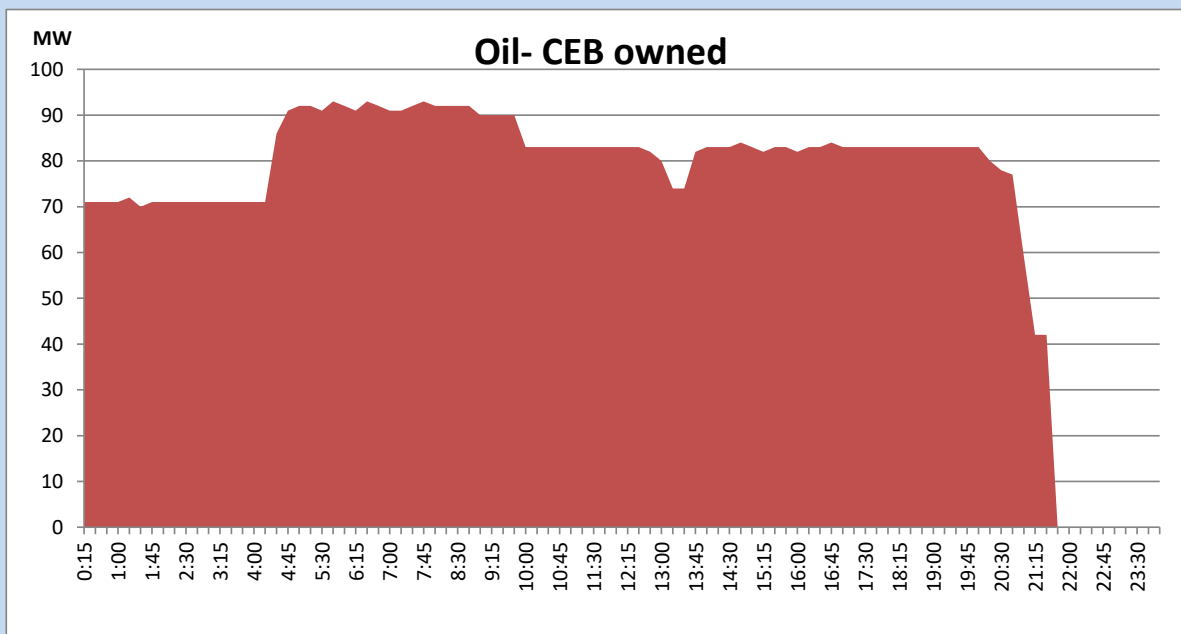
Coal Generation during the Previous day

October 13, 2022



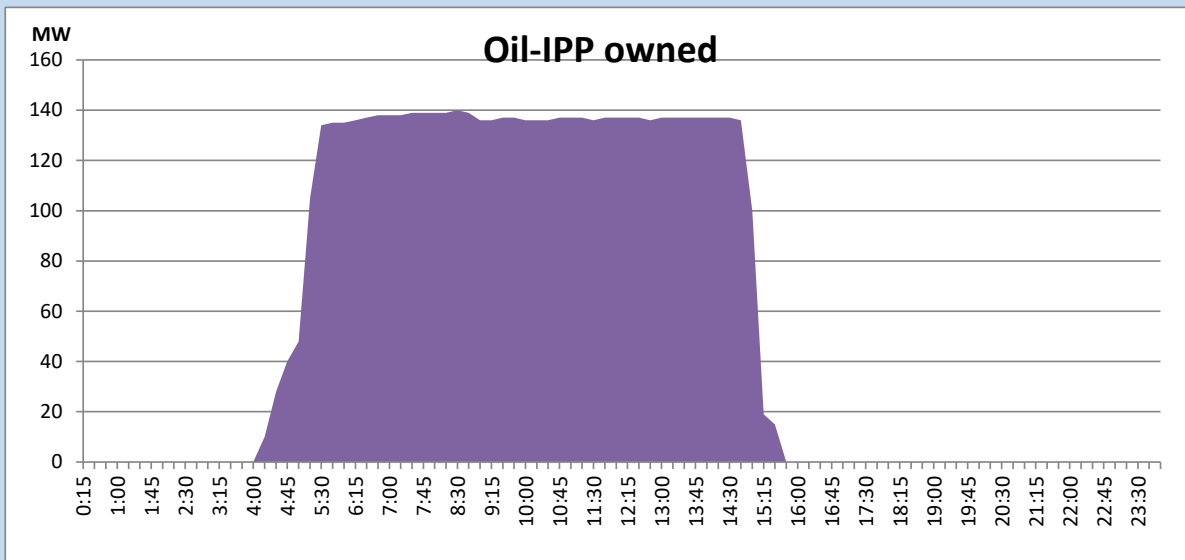
CEB Oil Plant Generation during the Previous day

October 13, 2022



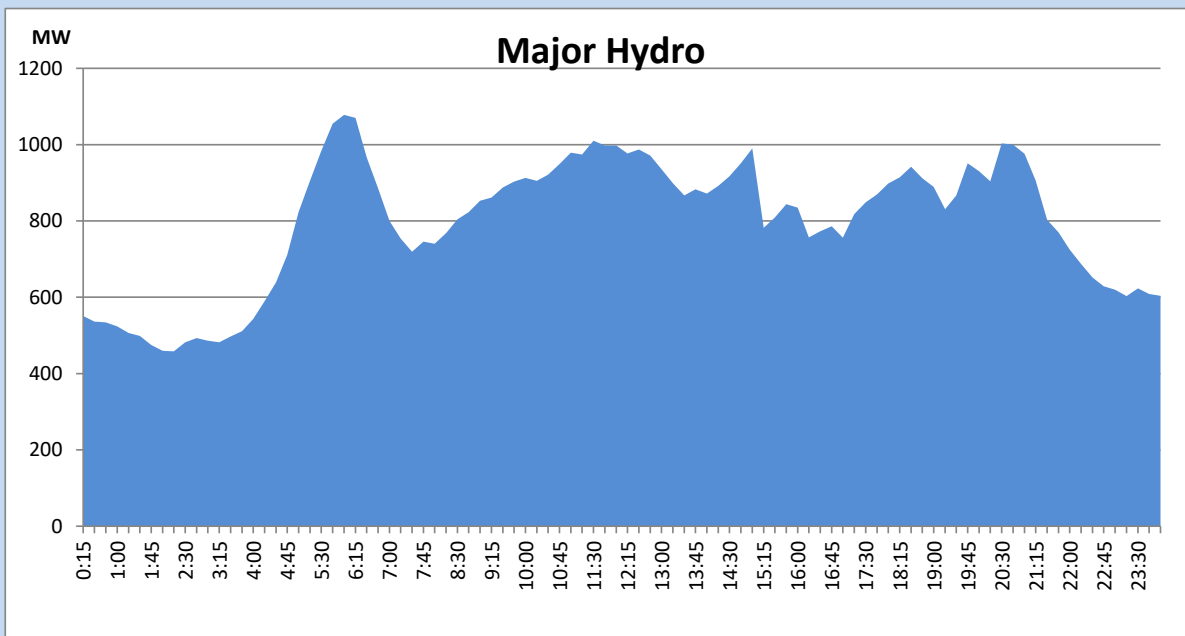
IPP Oil Plant Generation during the Previous day

October 13, 2022



Major Hydro Generation during the Previous day

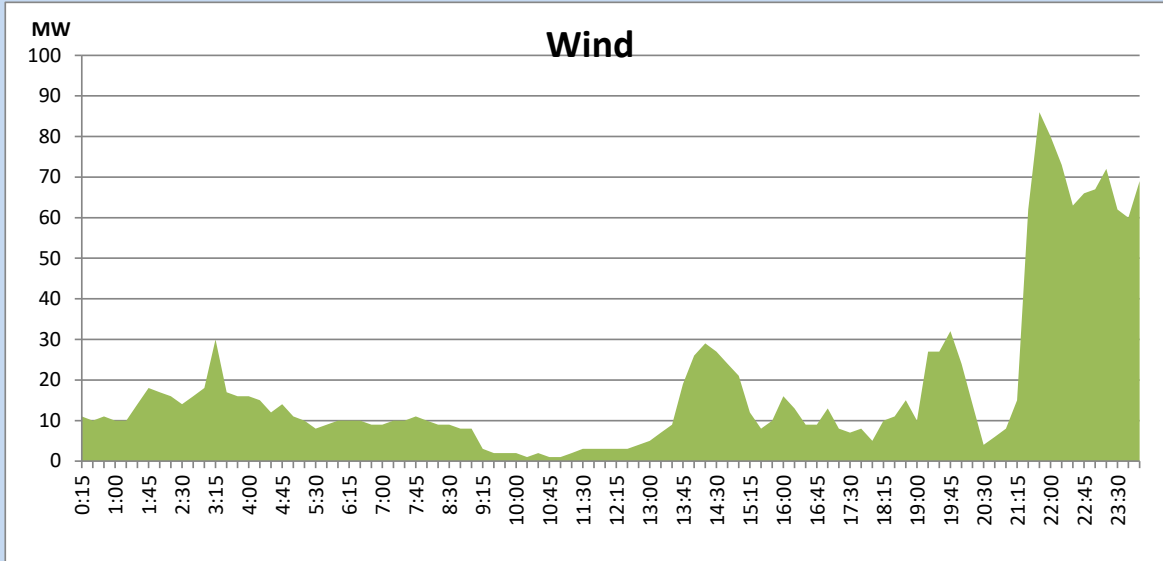
October 13, 2022



Wind Generation during the Previous day

October 13, 2022

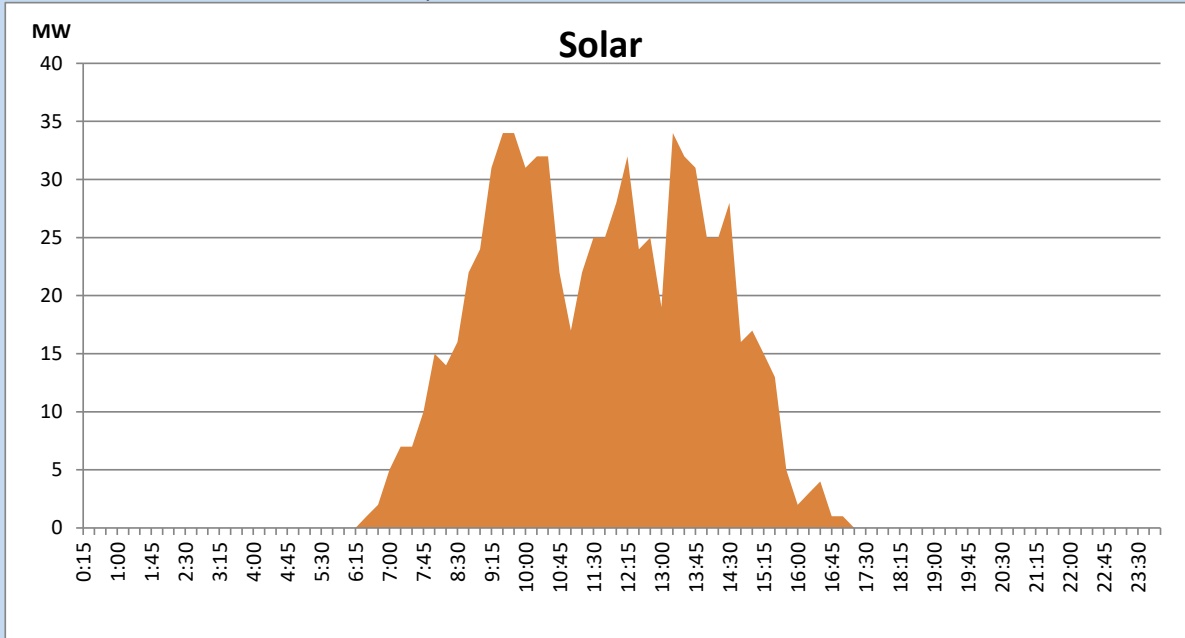
Based on Telemetered Power Stations only



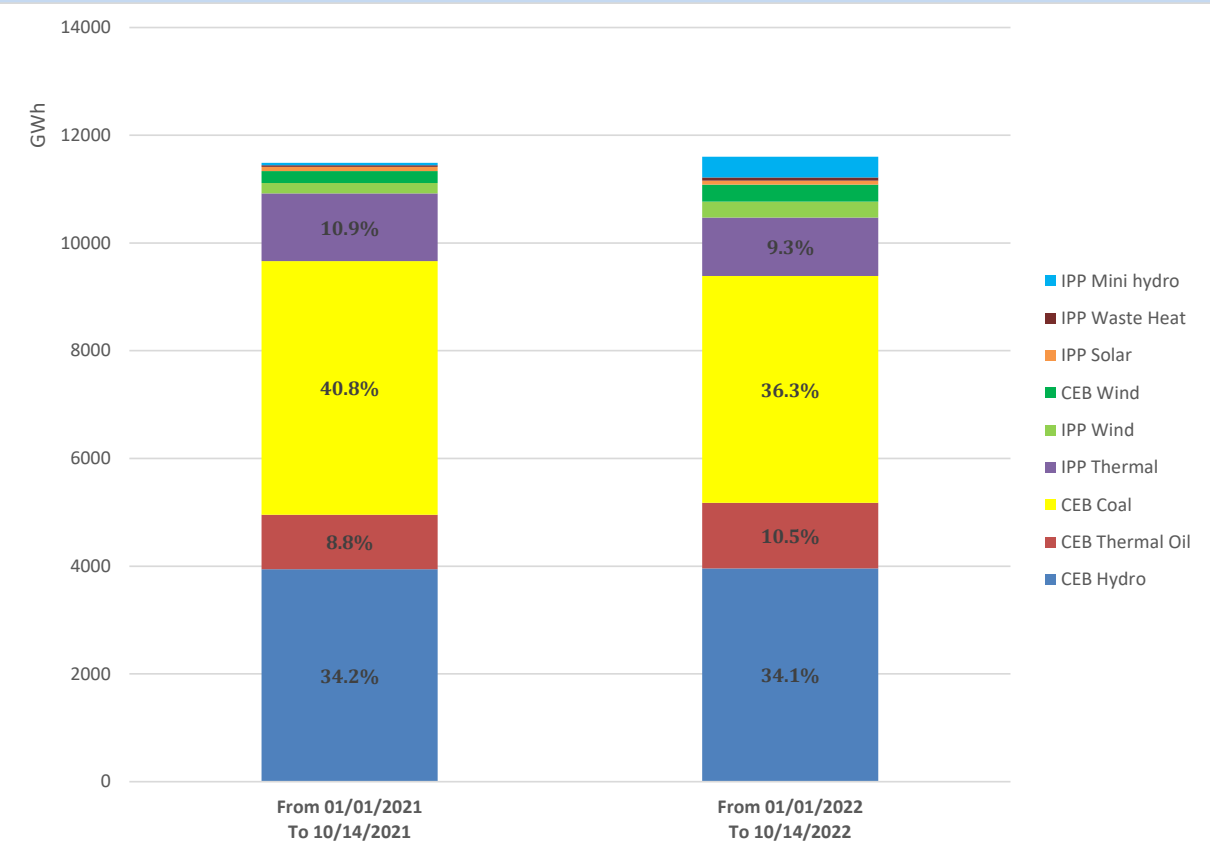
Solar Generation during the Previous day

October 13, 2022

Based on Telemetered Power Stations only



Cumulative Dispatch Comparison with Last Year



Thermal Plant Fuel types

Power Station	Primary Fuel
CEB Thermal	
Sapugaskanda 1	Heavy Fuel
Sapugaskanda 2	Heavy Fuel
Kelanitissa Small Gas Turbines	Auto Diesel
GT 7 - Kelanitissa	Auto Diesel
Kelanitissa CCY	Naphtha or Diesel
Lakvijaya 1	Coal
Lakvijaya 2	Coal
Lakvijaya 3	Coal
Uthuru Janani	Heavy Fuel
Barge CEB	Heavy Fuel

Power Station	Primary Fuel
Private Thermal	
Sojitz - Kelanitissa	Auto Diesel
West Coast	Auto Diesel / Heavy Fuel
ACE Matara	Heavy Fuel
ACE Embilipitiya	Heavy Fuel

Major Incidents during the day -as reported by CEB morning of

October 15, 2022

- 1) Rotational manual load shedding was carried out from 18:00hrs to 20:30hrs.
 - 2) Polpitiya-Kiribathkumbura cct tripped from Polpitiya end and Nawalapitiya-Kiribathkumbura cct tripped from both ends at 9:31 hrs due to the operation of distance protection causing Kurunegala, Kiribathkumbura GSs and Ukuwela all 132/33kV T/Fs to be dead. Polpitiya-Kiribathkumbura cct was normalized at 10:08 hrs. Nawalapitiya-Kiribathkumbura cct is yet to normalize.
 - 3) Kerawalapitiya 220/33kV T/F 02 which tripped on 13/10/2022 was normalized at 12:29 hrs.
 - 4) Kukule spilling continues to the present hour. Laxapana pond spilling started at 16:32 hrs and stopped at 1:12 hrs (15/10/2022).
 - 5) Chunnakam 33kV B/S CB and 33kV feeders 06, 09 and 12 tripped at 00:04 hrs (15/10/2022) due to E/F. All affected equipment was normalized by 00:24 hrs.
- Nilan Hemachandra