

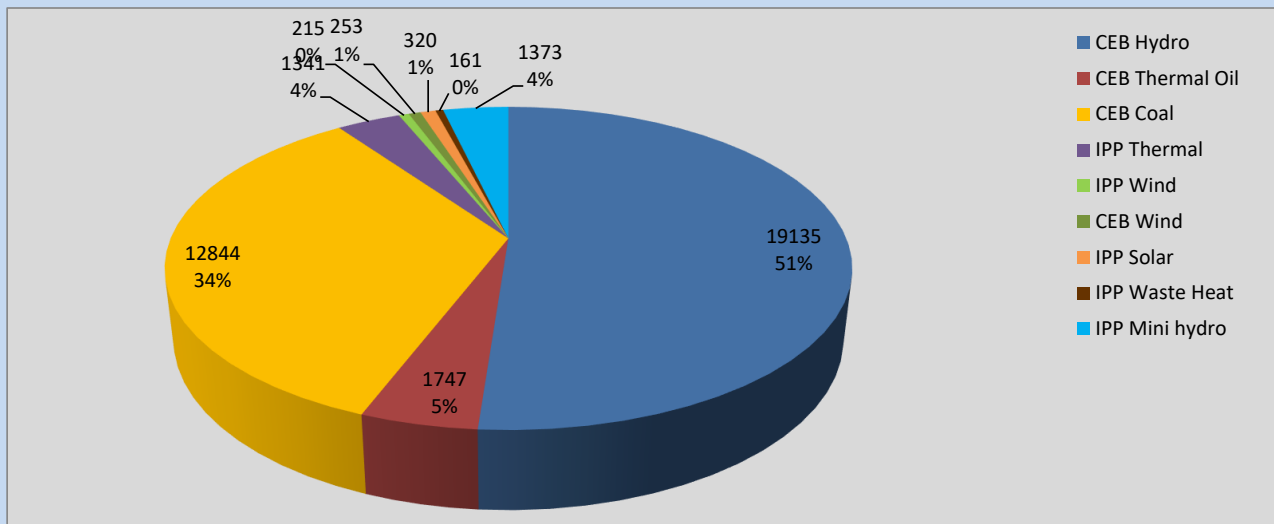
# Generation and Reservoirs Statistics

October 13, 2022



PUBLIC UTILITIES COMMISSION OF SRI LANKA

## Daily Generation Mix in MWh



**Total Generation** 37,389 MWh

Note: Above data is excluding contribution from Roof Top Solar, 1MW Solar and certain Mini Hydro plants

## Cumulative Dispatch

Note: Following data is Excluding contribution from Roof Top Solar, 1MW solar and Mini Hydro plants

### For Current Month

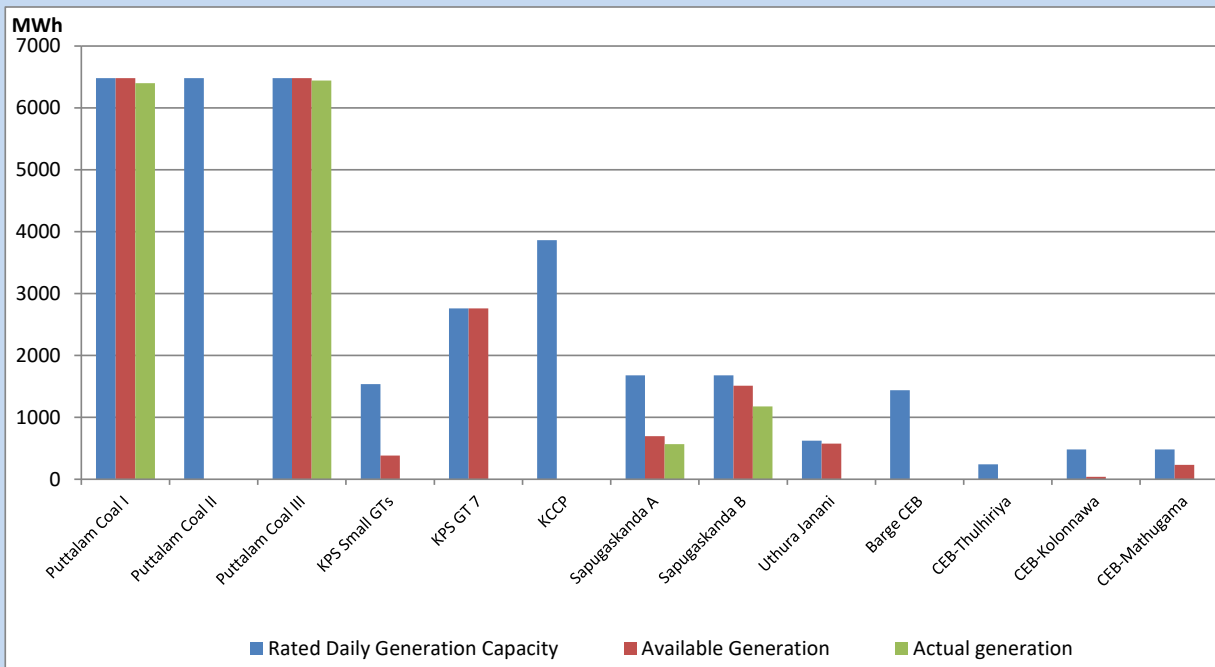
Category	Dispatch (GWh)	Percentage
CEB Hydro	237.46	48.24%
CEB Thermal Oil	37.35	7.59%
CEB Coal	160.24	32.56%
IPP Thermal	7.12	1.45%
SPP Wind	12.64	2.57%
CEB Wind	12.02	2.44%
SPP Solar	3.60	0.73%
SPP Solid Waste	2.07	0.42%
Mini Hydro	19.70	4.00%
<b>Total</b>	<b>492.20</b>	

### For Current Year

Category	Dispatch (GWh)	Percentage
CEB Hydro	3,937.7	34.06%
CEB Thermal Oil	1,216.0	10.52%
CEB Coal	4,201.4	36.34%
IPP Thermal	1,082.9	9.37%
SPP Wind	293.6	2.54%
CEB Wind	318.1	2.75%
SPP Solar	75.0	0.65%
SPP Solid Waste	56.9	0.49%
Mini Hydro	380.2	3.29%
<b>Total</b>	<b>11,561.5</b>	

## CEB owned Thermal Plant Dispatch

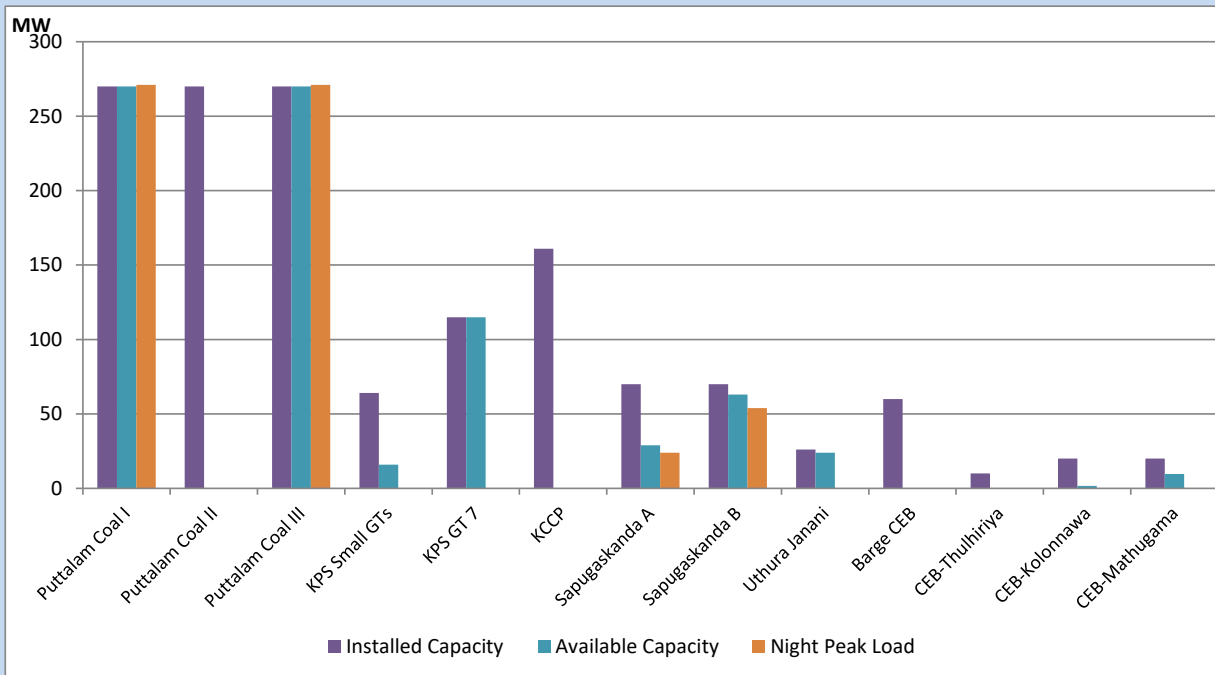
October 13, 2022



Available Generation is estimated based on plant availability at 6.00am on

October 14, 2022

## CEB owned Thermal Plant Loading at the Night Peak



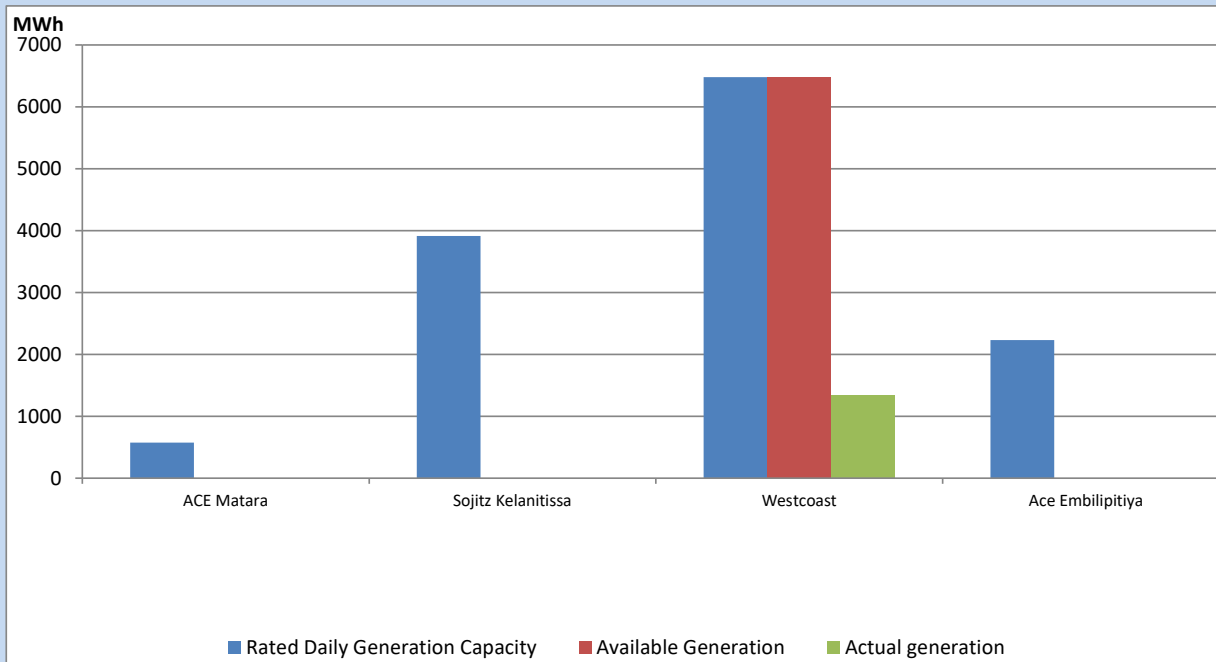
Note- Plant availability is recorded at 6.00 am on

October 14, 2022

## IPP owned Thermal Plant Dispatch

October 13, 2022

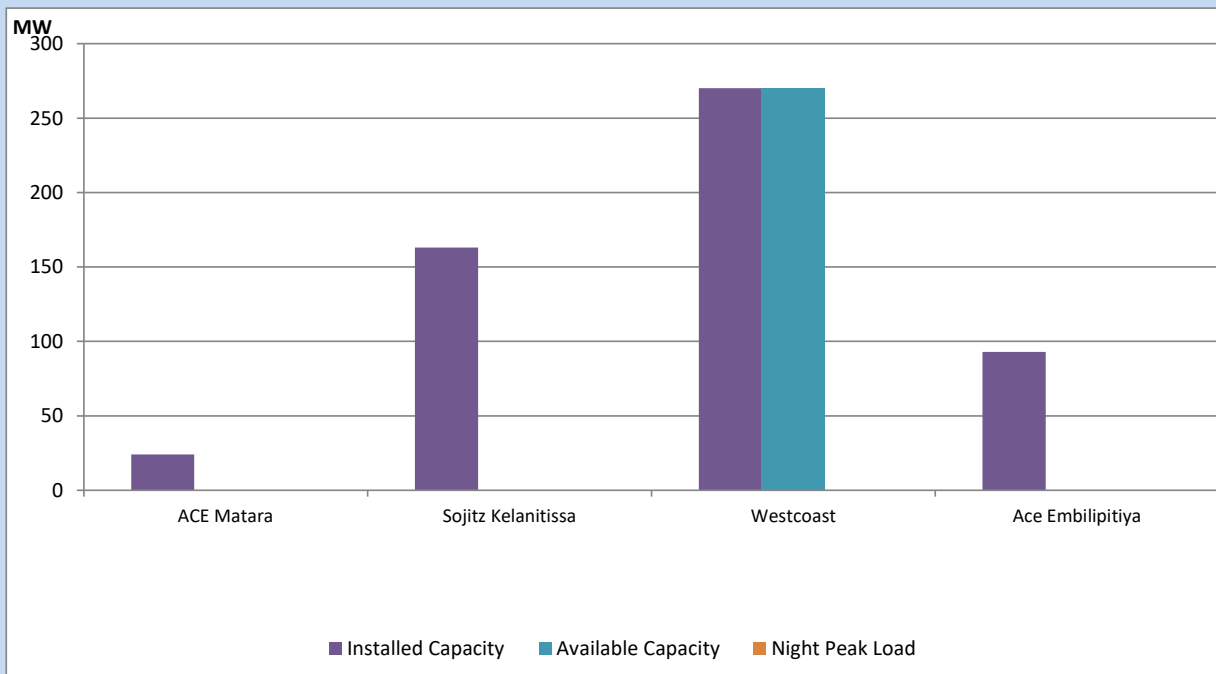
Asia Power, V Power Pallekale, Vpower Galle, V Power Horana, Vpower Hambantota, Vpower Valachchena and Altaqa Mahiyanganaya are not available due to expiration of PPAs



Available Generation is estimated based on plant availability at 6.00am on

October 14, 2022

## IPP owned Thermal Plant Loading at the Night Peak

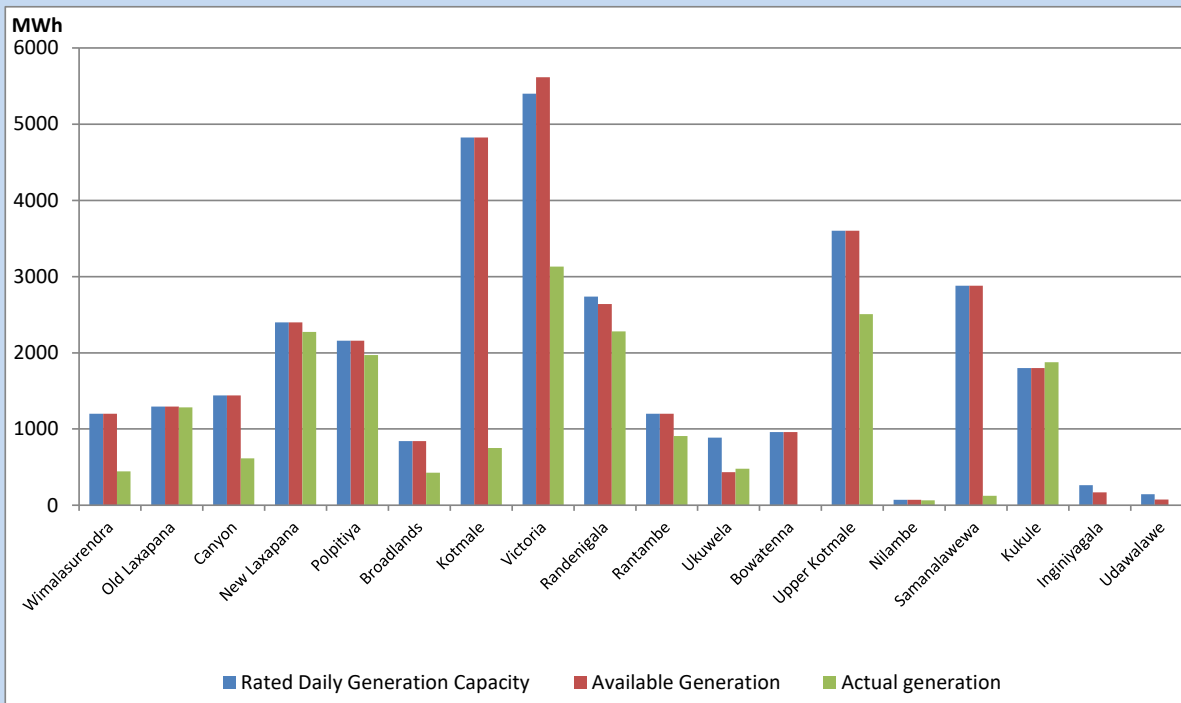


Note- Plant availability is recorded at 6.00 am on

October 14, 2022

## Major Hydro Plant Dispatch

October 13, 2022

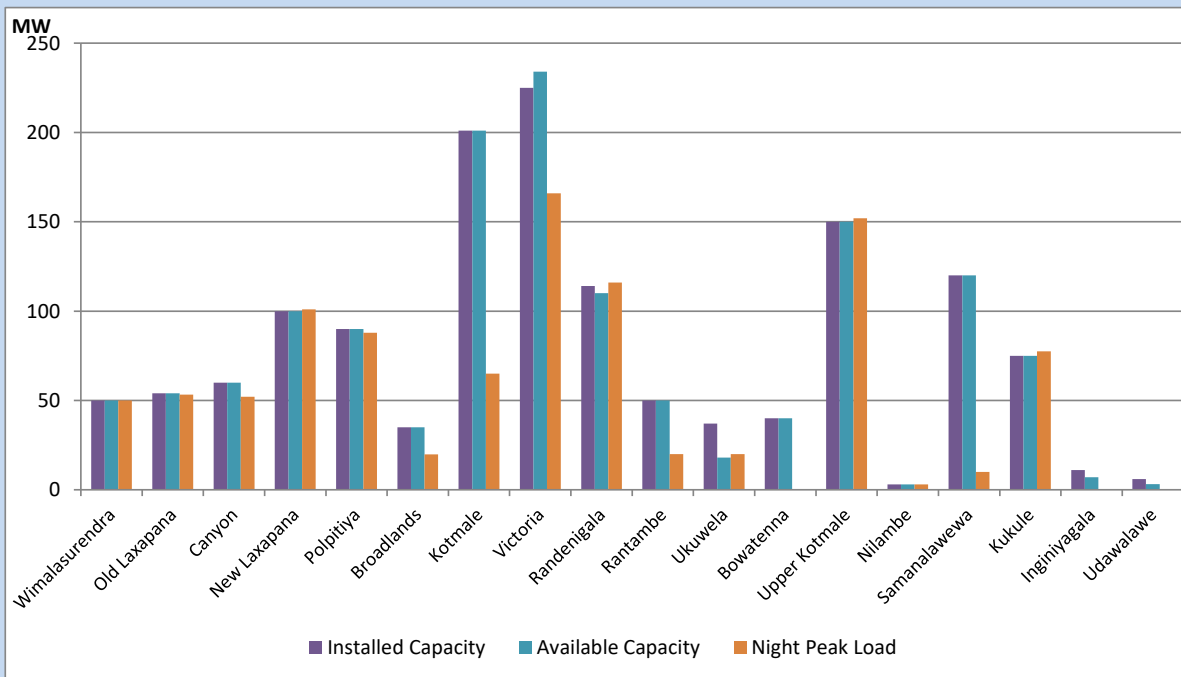


Available Generation is estimated based on plant availability at 6.00am on  
Broadlands power plant is operating in the Commissioning Stage

October 14, 2022

## Major Hydro Plant Loading at Night Peak

October 13, 2022



Note- Plant availability is recorded at 6.00 am on  
Broadlands power plant is operating in the Commissioning Stage

October 14, 2022

## Summary of Major Plant performance

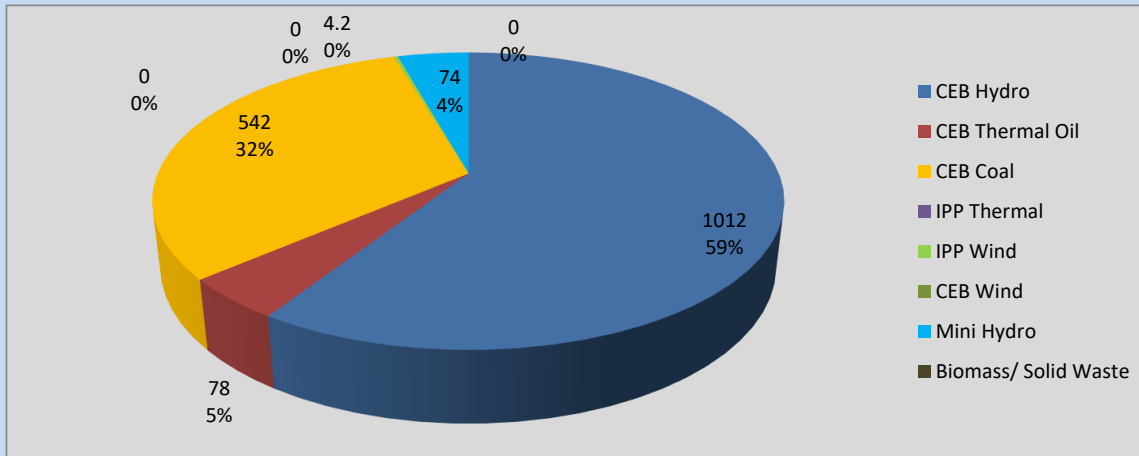
Plant	Installed Capacity	Plant Availability	Night peak Load	Plant Dispatch
	(MW)	(MW)	(MW)	(MWh)
Wimalasurendra	50	50	50	443
Old Laxapana	54	54	53	1,283
Canyon	60	60	52	615
New Laxapana	100	100	101	2,272
Polpitiya	90	90	88	1,972
Broadlands	35	35	20	428
Kotmale	201	201	65	750
Victoria	225	234	166	3,132
Randenigala	114	110	116	2,280
Rantambe	50	50	20	909
Ukuwela	37	18	20	478
Bowatenna	40	40	0	0
Upper Kotmale	150	150	152	2,507
Nilambe	3	3	3	65
Samanalawewa	120	120	10	125
Kukule	75	75	78	1,876
Inginiyagala	11	7	0	0
Udawalawe	6	3	0	0
Puttalam Coal I	270	270	271	6,400
Puttalam Coal II	270	0	0	0
Puttalam Coal III	270	270	271	6,444
KPS Small GTs	64	16	0	0
KPS GT 7	115	115	0	0
KCCP	161	0	0	0
Sapugaskanda A	70	29	24	569
Sapugaskanda B	70	63	54	1,178
Uthura Janani	26	24	0	0
Barge CEB	60	0	0	0
CEB-Thulhiriya	10	0	0	0
CEB-Kolonnawa	20	2	0	0
CEB-Mathugama	20	10	0	0
ACE Matara	24	0	0	0
Sojitz Kelanitissa	163	0	0	0
West Coast	270	270	0	1,341
ACE Embilipitiya	93	0	0	0
<b>Total</b>	<b>3,397</b>	<b>2,468</b>	<b>1,692</b>	<b>37,389</b>

Plant availability is the availability recorded at 6 am on

October 14, 2022

## Contribution to the Night Peak in MW

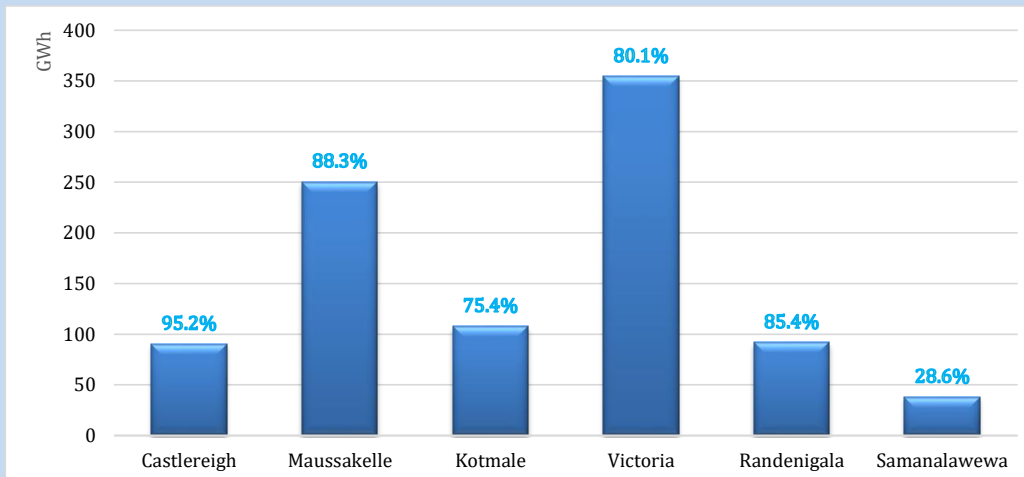
October 13, 2022



Night Peak*	1,709.7 MW
Day Peak	1,849.5 MW
Minimum Demand	1,145.0 MW

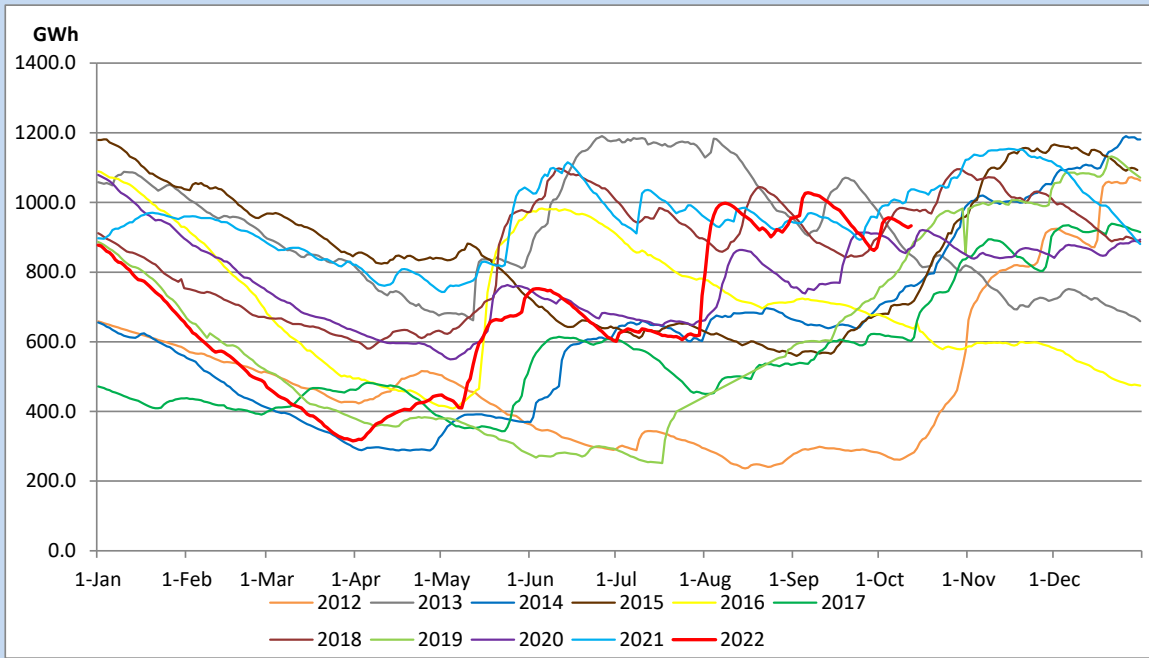
Above figures are excluding contribution from Roof Top Solar, 1MW solar, certain Wind plants and Mini Hydro plants

## Reservoir Levels - as at 06.00 Hr on October 14, 2022

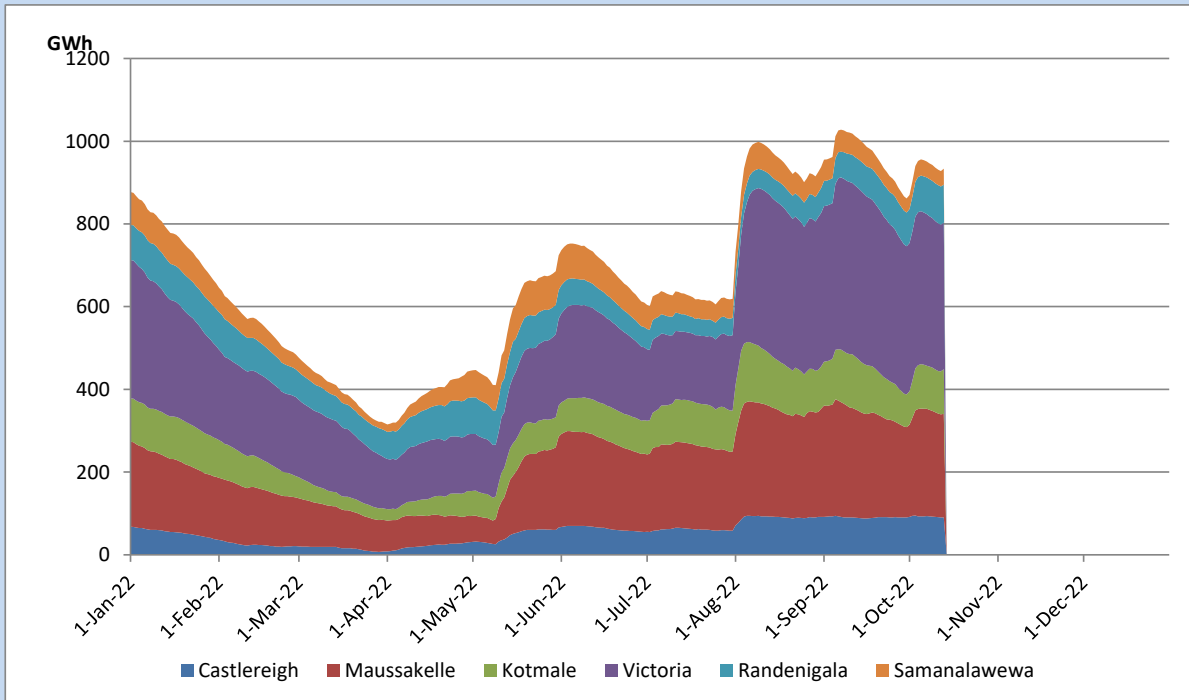


Total Reservoir Level	933.4 GWh
% of Total capacity	77.4%

## Comparison of Total Reservoir Storage Levels with Past Years

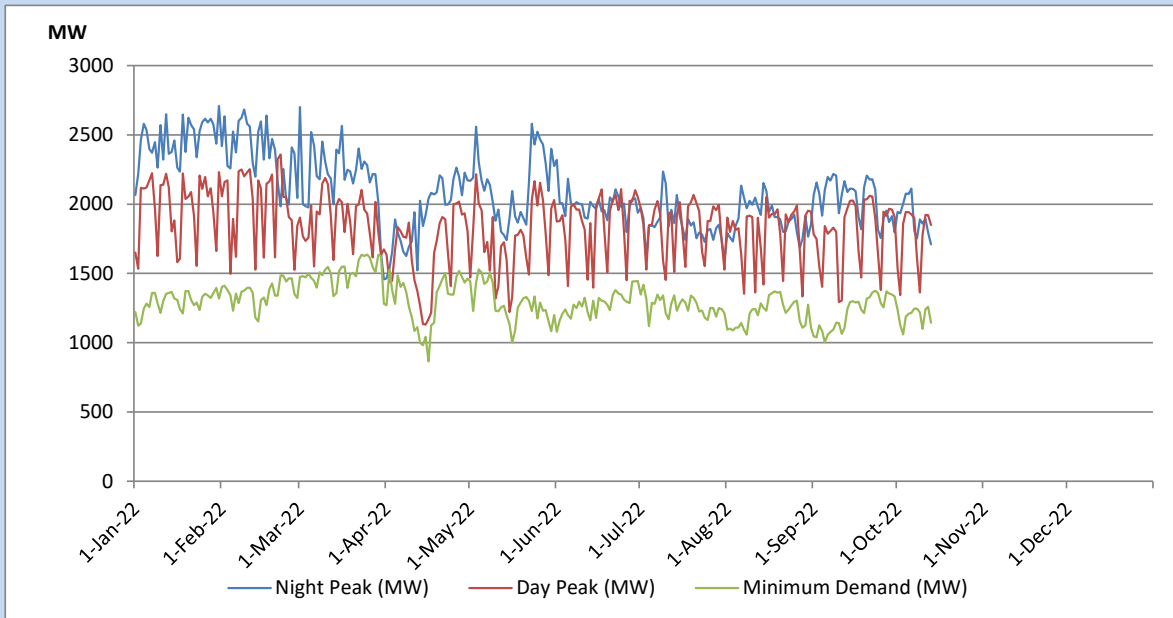


## Variation of Major Hydro Reservoir Levels in the current year (GWh)





## Variation of Demand during the current year

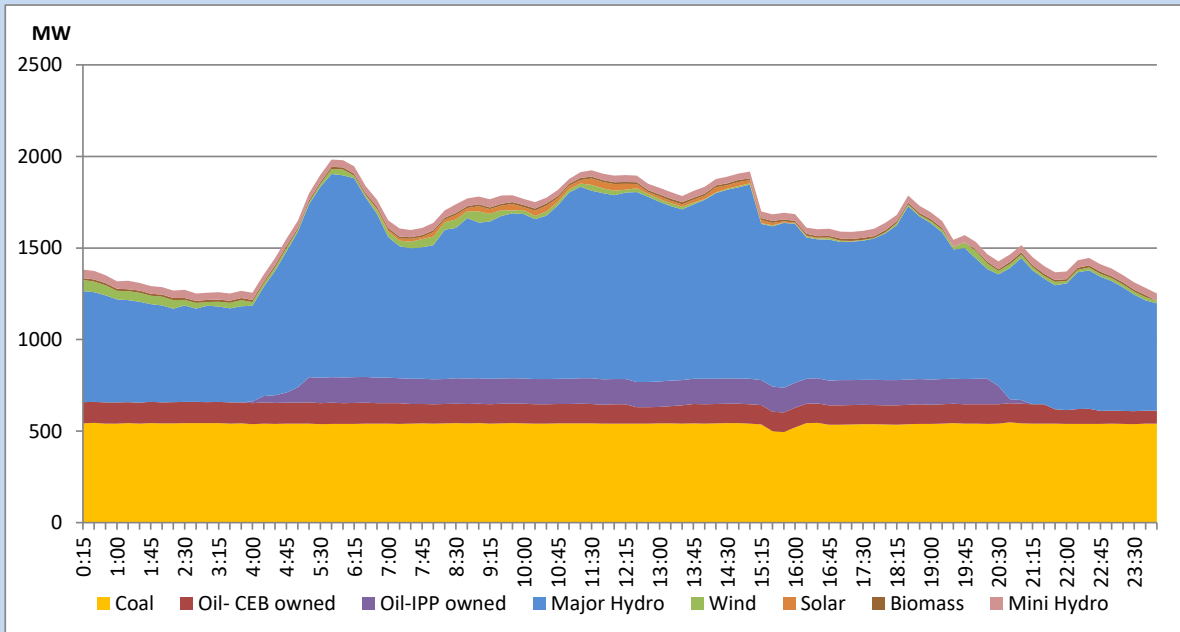


The above figures are excluding contribution from Roof Top Solar, 1MW solar, certain Wind plants and Mini Hydro plants

## Daily Load Curve of the Previous day

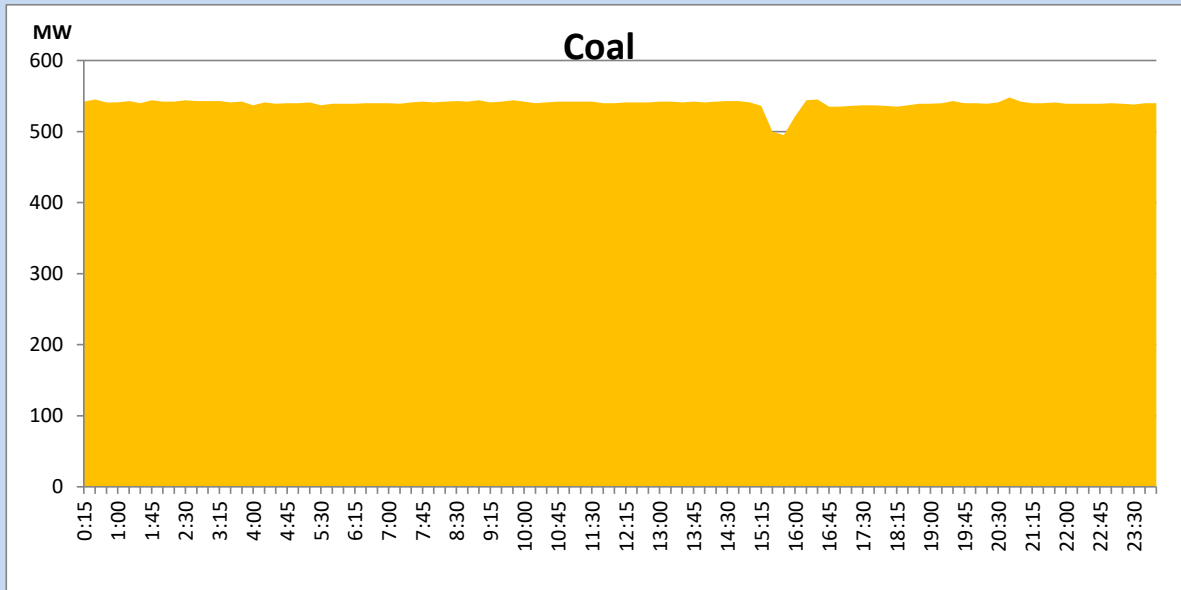
October 12, 2022

Solar and wind data is based on Telemetered Power Stations only



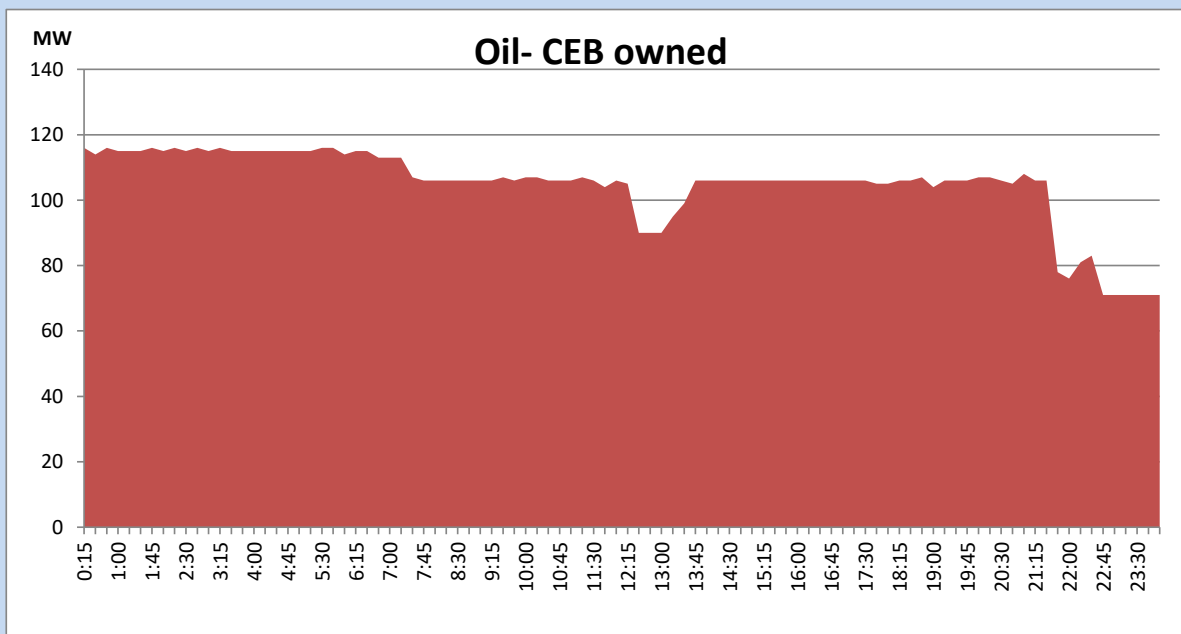
## Coal Generation during the Previous day

October 12, 2022



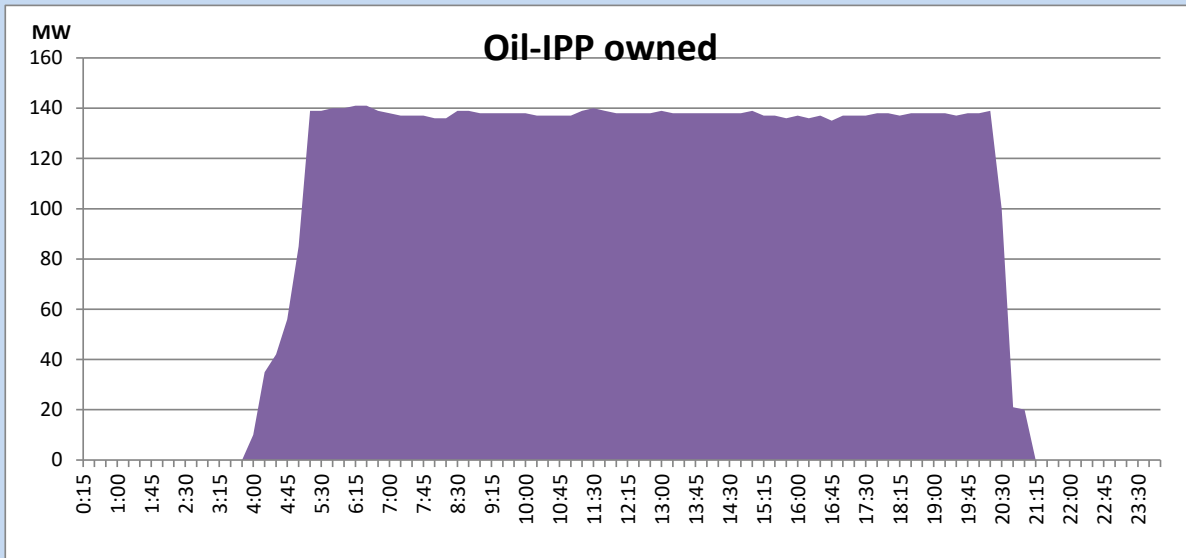
## CEB Oil Plant Generation during the Previous day

October 12, 2022



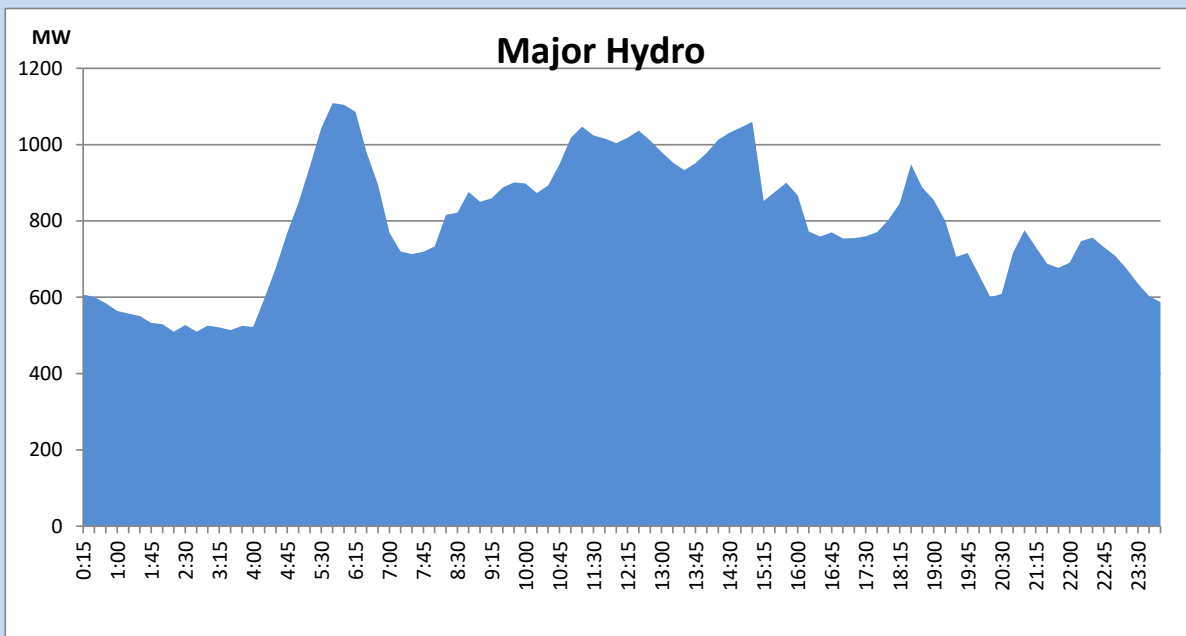
## IPP Oil Plant Generation during the Previous day

October 12, 2022



## Major Hydro Generation during the Previous day

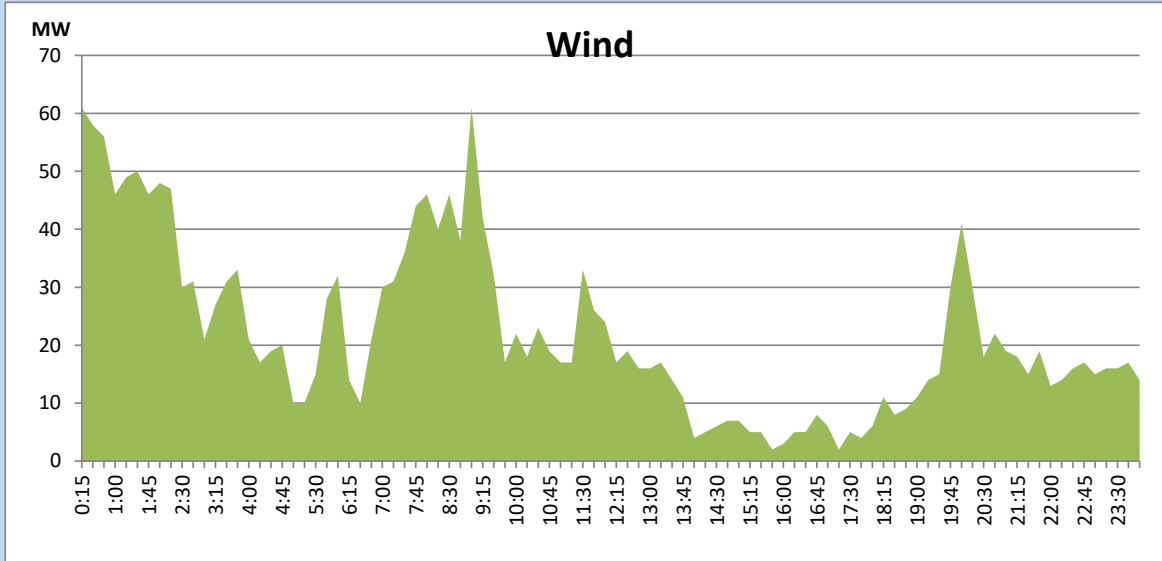
October 12, 2022



## Wind Generation during the Previous day

October 12, 2022

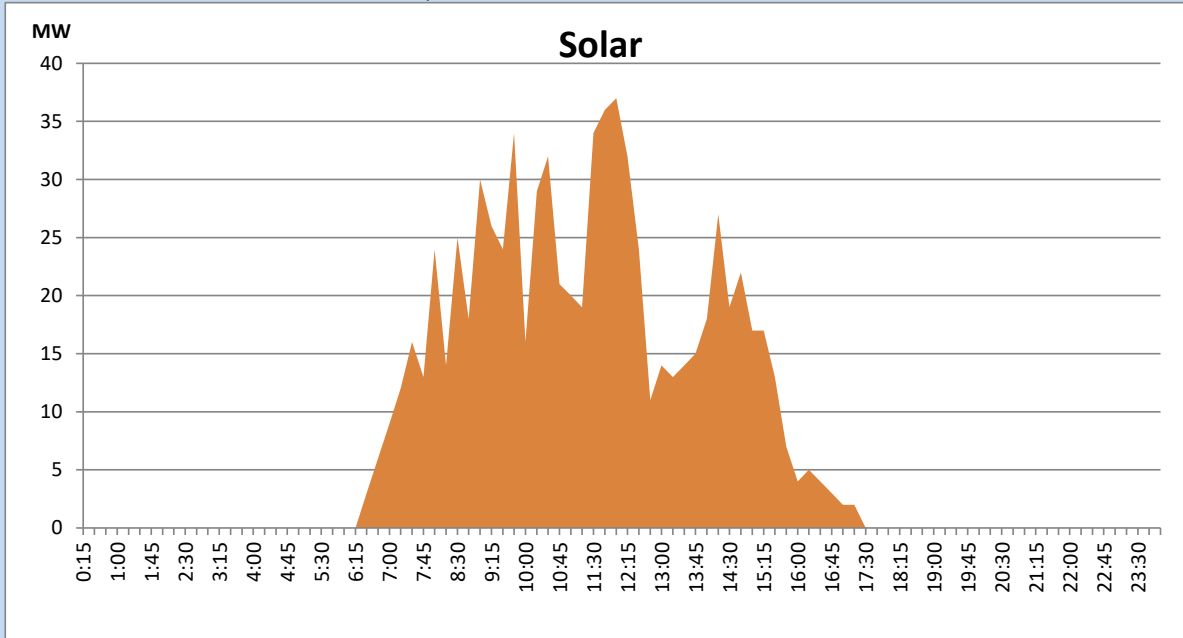
Based on Telemetered Power Stations only



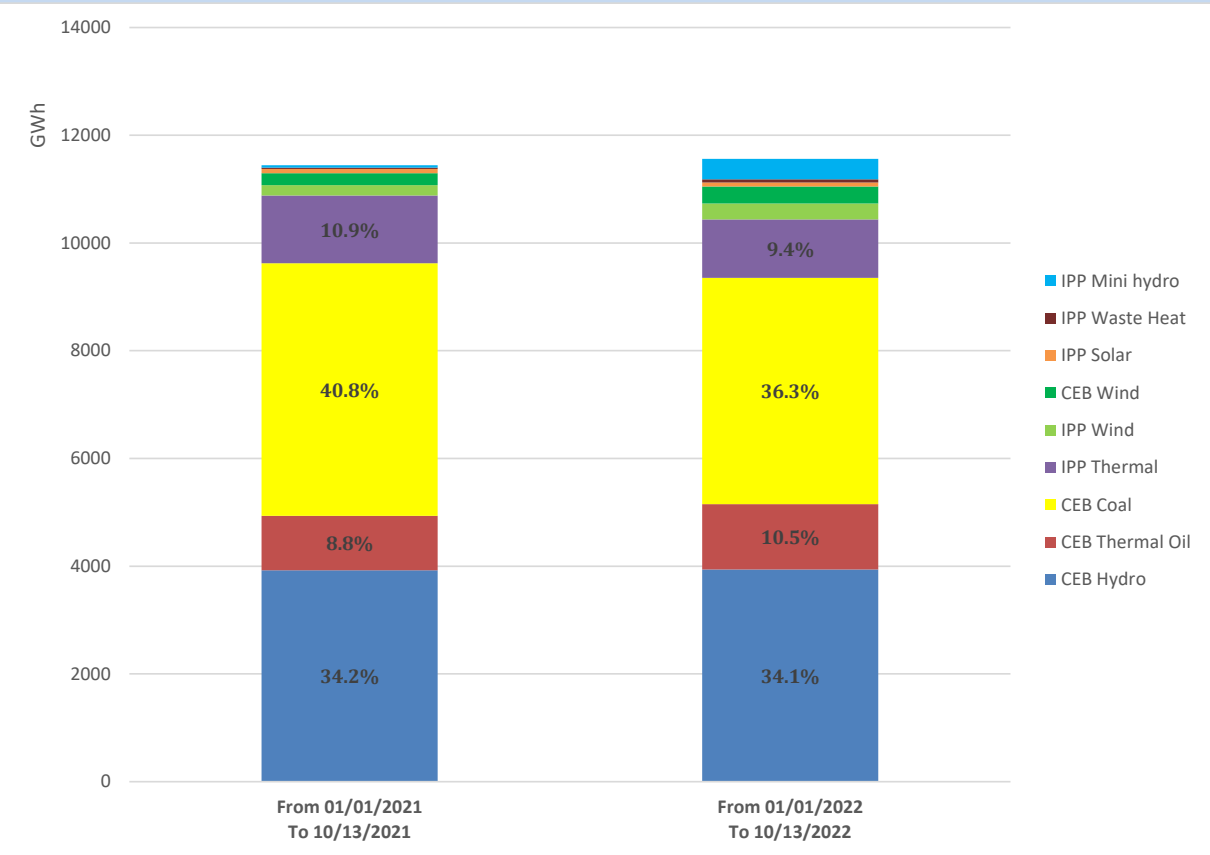
## Solar Generation during the Previous day

October 12, 2022

Based on Telemetered Power Stations only



# Cumulative Dispatch Comparison with Last Year



## Thermal Plant Fuel types

Power Station	Primary Fuel
CEB Thermal	
Sapugaskanda 1	Heavy Fuel
Sapugaskanda 2	Heavy Fuel
Kelanitissa Small Gas Turbines	Auto Diesel
GT 7 - Kelanitissa	Auto Diesel
Kelanitissa CCY	Naphtha or Diesel
Lakvijaya 1	Coal
Lakvijaya 2	Coal
Lakvijaya 3	Coal
Uthuru Janani	Heavy Fuel
Barge CEB	Heavy Fuel

Power Station	Primary Fuel
Private Thermal	
Sojitz - Kelanitissa	Auto Diesel
West Coast	Auto Diesel / Heavy Fuel
ACE Matara	Heavy Fuel
ACE Embilipitiya	Heavy Fuel

## Major Incidents during the day -as reported by CEB morning of

October 14, 2022

- 1) Rotational manual load shedding was carried out from 15:00hrs to 22:00hrs.
- 2) Matugama-Ambalangoda both ccts tripped at 12:17 hrs from both ends due to operation of distance protection causing Galle & Ambalangoda GSS to be dead. GSSs and affected feeders normalized at 12:29 hrs. Matugama-Ambalangoda both ccts restored at 12:38hrs.
- 3) Kerawalapitiya 220/33kV T/F-02 tripped at 16:10 hrs due to operation of LV-REF protection. T/F is yet to be restored.
- 4) Kukule started spilling at 23:30 hrs and spilling continues to present hour.