

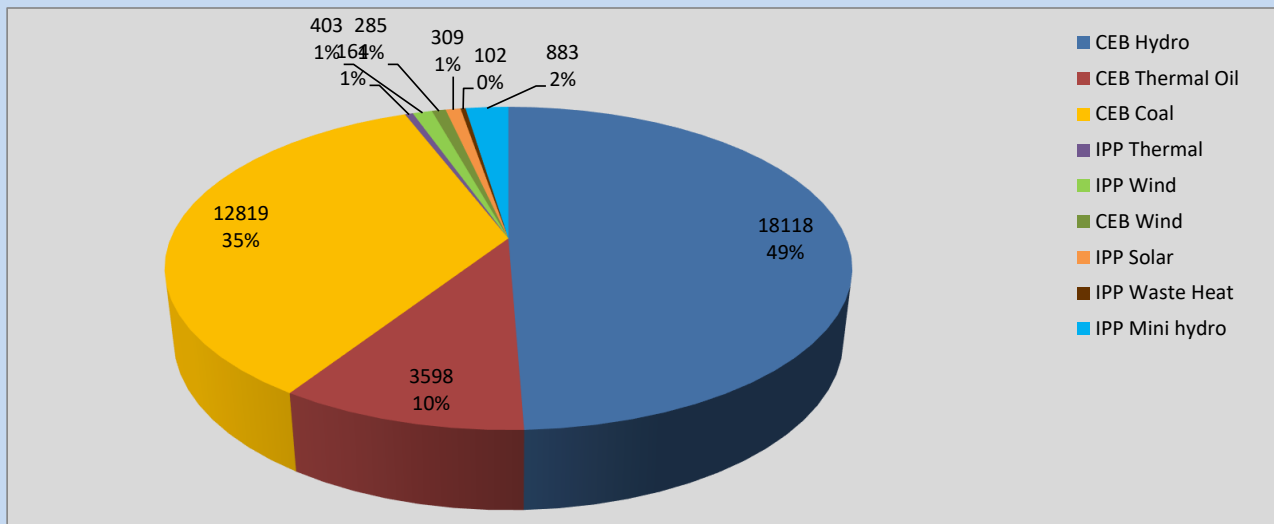
# Generation and Reservoirs Statistics

October 10, 2022



PUBLIC UTILITIES COMMISSION OF SRI LANKA

## Daily Generation Mix in MWh



**Total Generation** **36,681 MWh**

Note: Above data is excluding contribution from Roof Top Solar, 1MW Solar and certain Mini Hydro plants

## Cumulative Dispatch

Note: Following data is Excluding contribution from Roof Top Solar, 1MW solar and Mini Hydro plants

### For Current Month

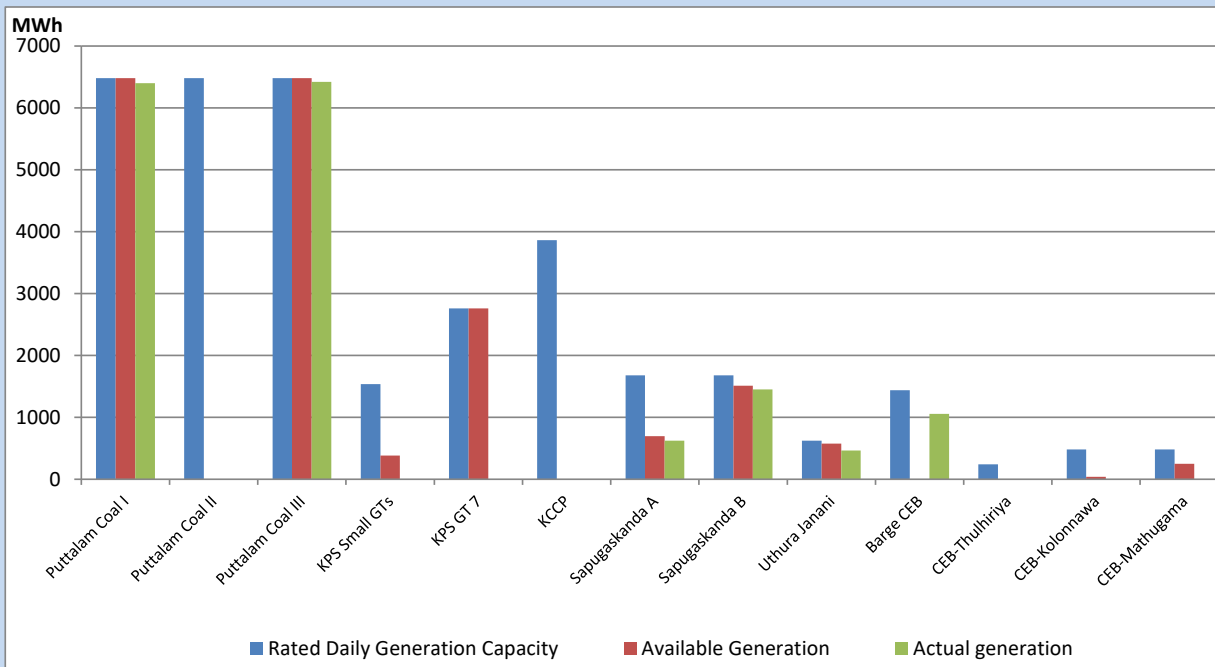
Category	Dispatch (GWh)	Percentage
CEB Hydro	179.72	47.75%
CEB Thermal Oil	30.39	8.08%
CEB Coal	121.42	32.26%
IPP Thermal	1.74	0.46%
SPP Wind	11.58	3.08%
CEB Wind	10.64	2.83%
SPP Solar	2.67	0.71%
SPP Solid Waste	1.56	0.41%
Mini Hydro	16.62	4.42%
<b>Total</b>	<b>376.34</b>	

### For Current Year

Category	Dispatch (GWh)	Percentage
CEB Hydro	3,879.9	33.90%
CEB Thermal Oil	1,209.1	10.56%
CEB Coal	4,162.6	36.37%
IPP Thermal	1,077.5	9.41%
SPP Wind	292.6	2.56%
CEB Wind	316.7	2.77%
SPP Solar	74.1	0.65%
SPP Solid Waste	56.4	0.49%
Mini Hydro	377.2	3.30%
<b>Total</b>	<b>11,445.7</b>	

## CEB owned Thermal Plant Dispatch

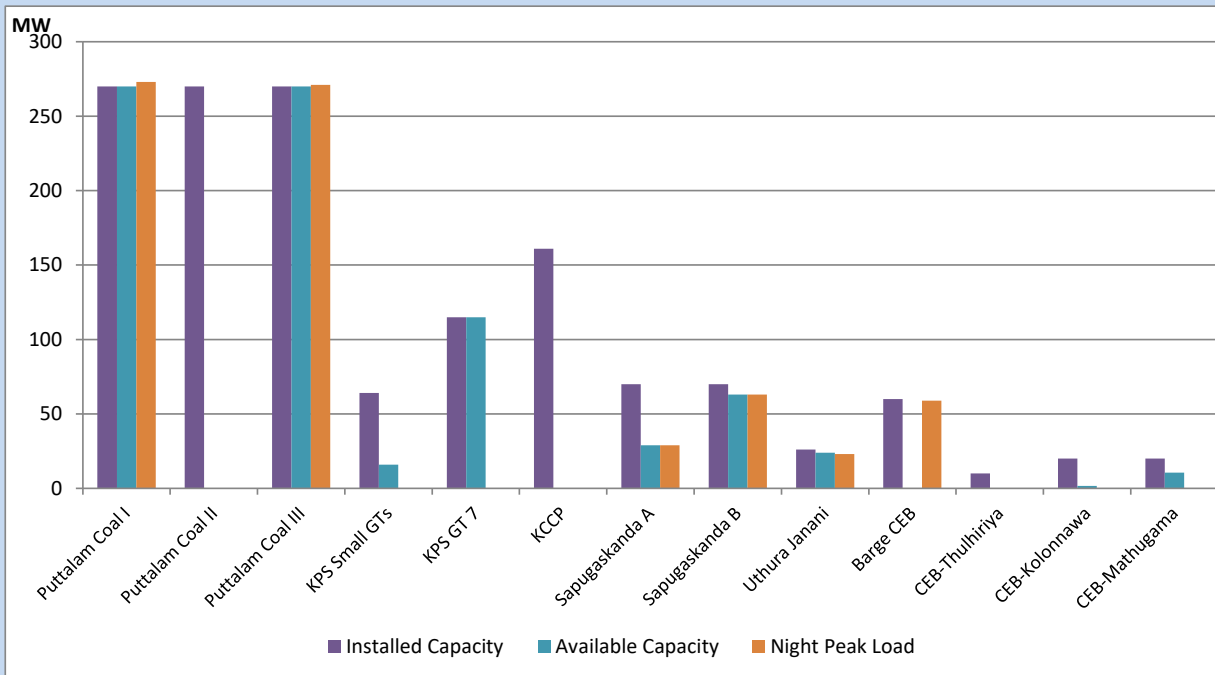
October 10, 2022



Available Generation is estimated based on plant availability at 6.00am on

October 11, 2022

## CEB owned Thermal Plant Loading at the Night Peak



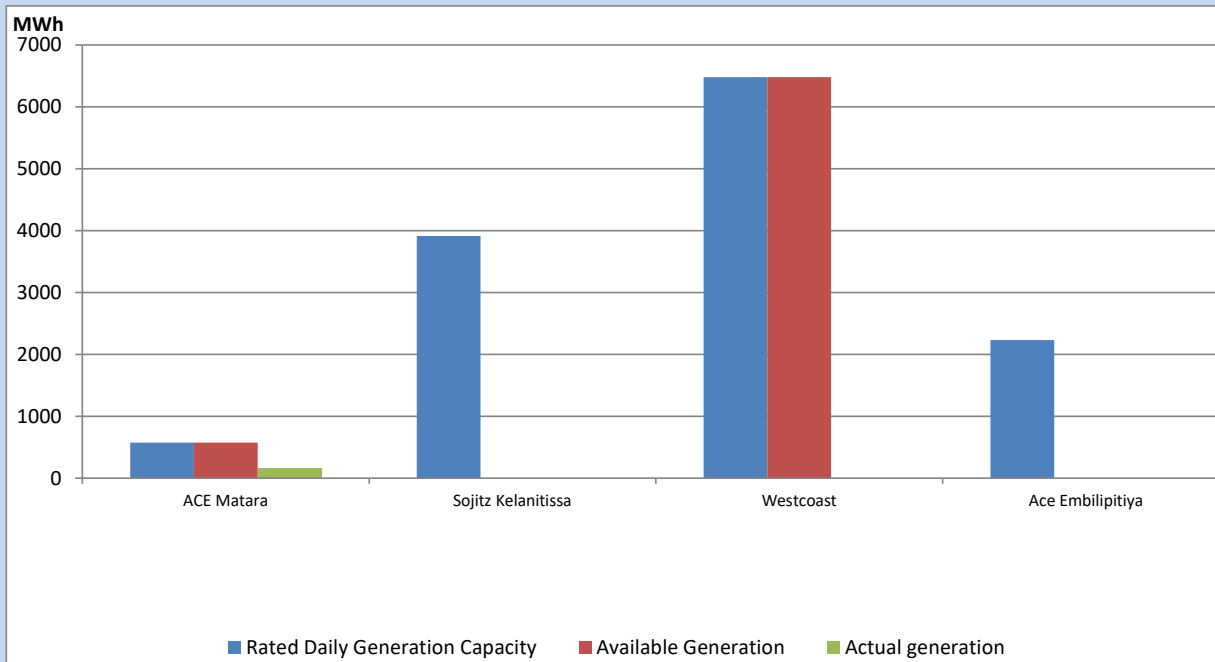
Note- Plant availability is recorded at 6.00 am on

October 11, 2022

## IPP owned Thermal Plant Dispatch

October 10, 2022

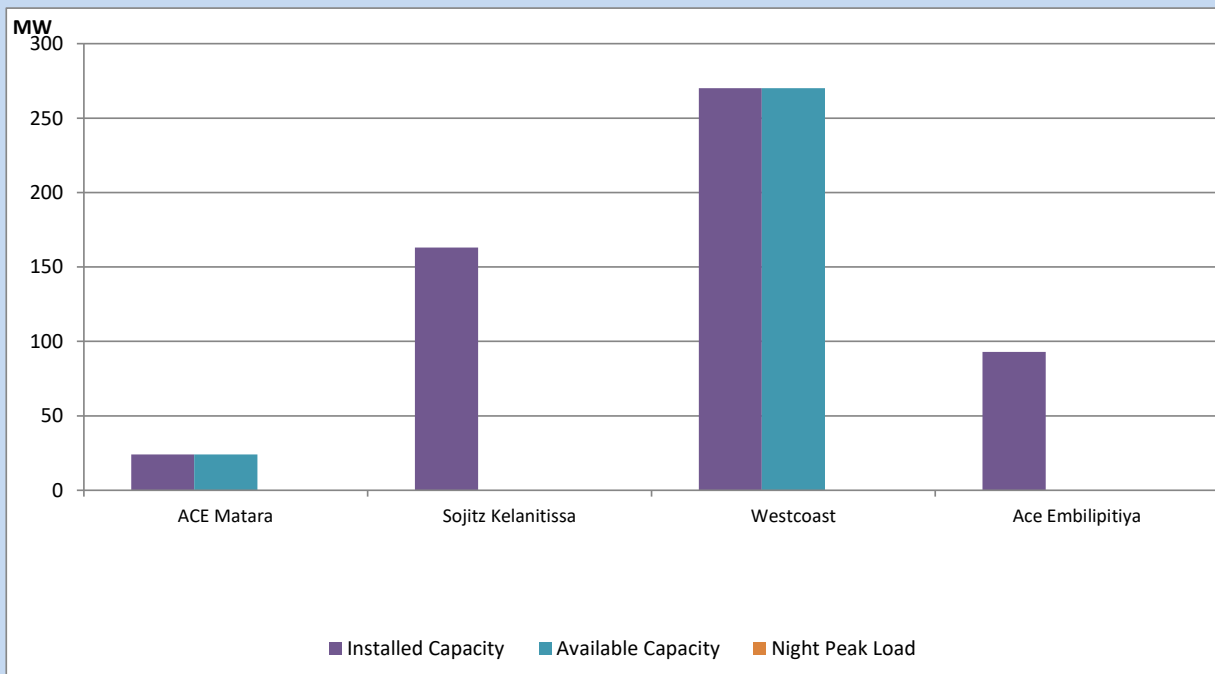
Asia Power, V Power Pallekale, Vpower Galle, V Power Horana, Vpower Hambantota, Vpower Valachchena and Altaqa Mahiyanganaya are not available due to expiration of PPAs



Available Generation is estimated based on plant availability at 6.00am on

October 11, 2022

## IPP owned Thermal Plant Loading at the Night Peak

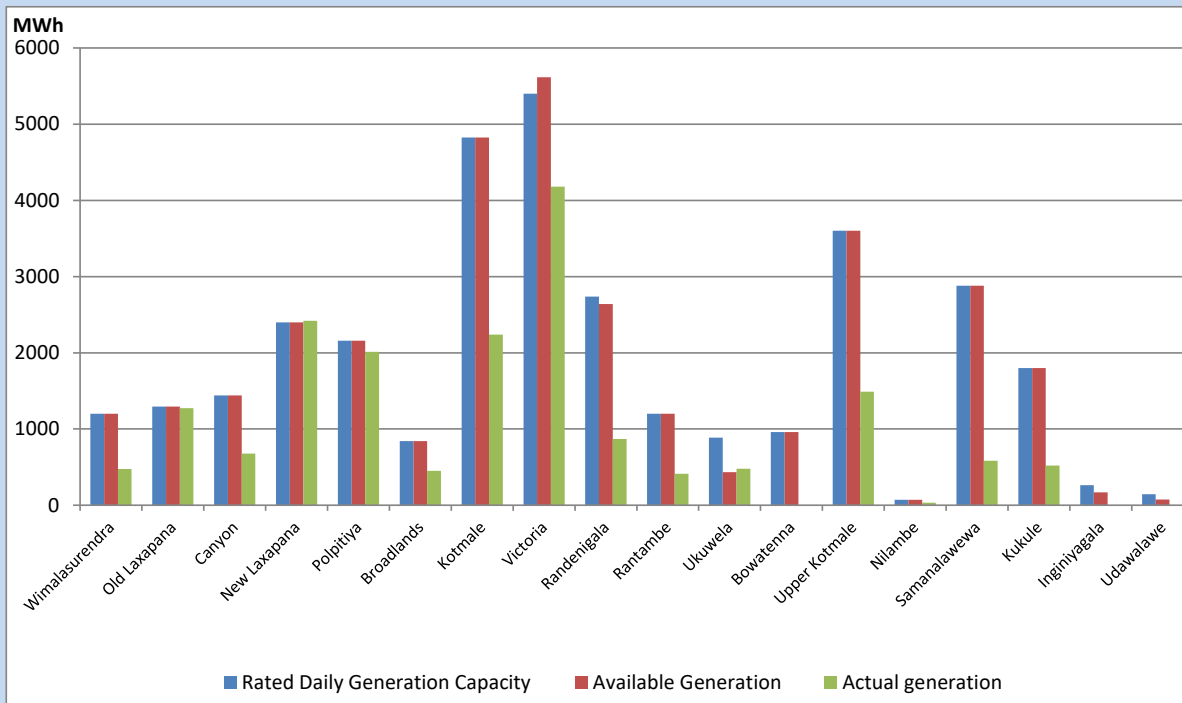


Note- Plant availability is recorded at 6.00 am on

October 11, 2022

## Major Hydro Plant Dispatch

October 10, 2022

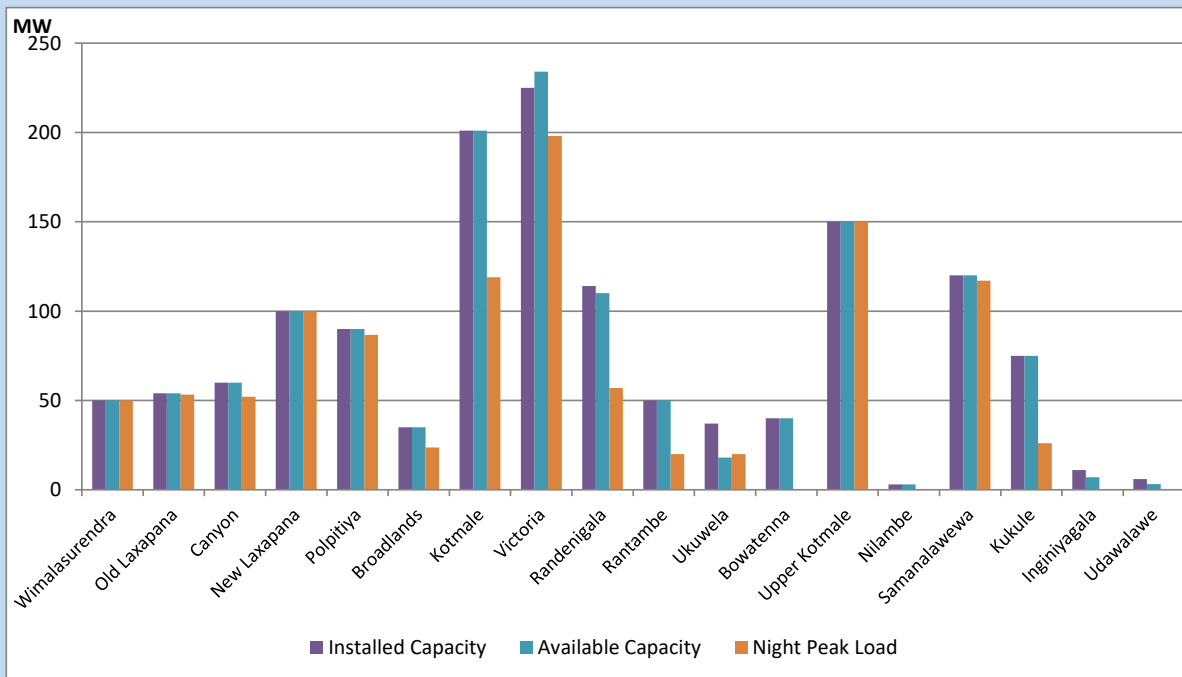


Available Generation is estimated based on plant availability at 6.00am on  
Broadlands power plant is operating in the Commissioning Stage

October 11, 2022

## Major Hydro Plant Loading at Night Peak

October 10, 2022



Note- Plant availability is recorded at 6.00 am on  
Broadlands power plant is operating in the Commissioning Stage

October 11, 2022

## Summary of Major Plant performance

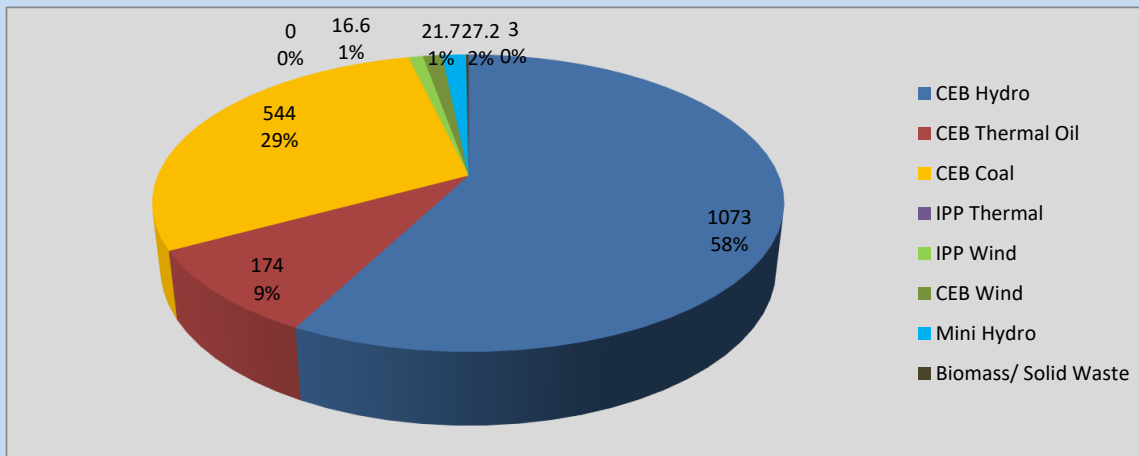
Plant	Installed Capacity	Plant Availability	Night peak Load	Plant Dispatch
	(MW)	(MW)	(MW)	(MWh)
Wimalasurendra	50	50	50	476
Old Laxapana	54	54	53	1,275
Canyon	60	60	52	677
New Laxapana	100	100	100	2,420
Polpitiya	90	90	87	2,013
Broadlands	35	35	24	451
Kotmale	201	201	119	2,240
Victoria	225	234	198	4,179
Randenigala	114	110	57	870
Rantambe	50	50	20	411
Ukuwela	37	18	20	478
Bowatenna	40	40	0	0
Upper Kotmale	150	150	150	1,490
Nilambe	3	3	0	34
Samanalawewa	120	120	117	582
Kukule	75	75	26	522
Inginiyagala	11	7	0	0
Udawalawe	6	3	0	0
Puttalam Coal I	270	270	273	6,398
Puttalam Coal II	270	0	0	0
Puttalam Coal III	270	270	271	6,421
KPS Small GTs	64	16	0	0
KPS GT 7	115	115	0	0
KCCP	161	0	0	0
Sapugaskanda A	70	29	29	623
Sapugaskanda B	70	63	63	1,451
Uthura Janani	26	24	23	466
Barge CEB	60	0	59	1,058
CEB-Thulhiriya	10	0	0	0
CEB-Kolonnawa	20	2	0	0
CEB-Mathugama	20	11	0	0
ACE Matara	24	24	0	164
Sojitz Kelanitissa	163	0	0	0
West Coast	270	270	0	0
ACE Embilipitiya	93	0	0	0
<b>Total</b>	<b>3,397</b>	<b>2,493</b>	<b>1,859</b>	<b>36,681</b>

Plant availability is the availability recorded at 6 am on

October 11, 2022

## Contribution to the Night Peak in MW

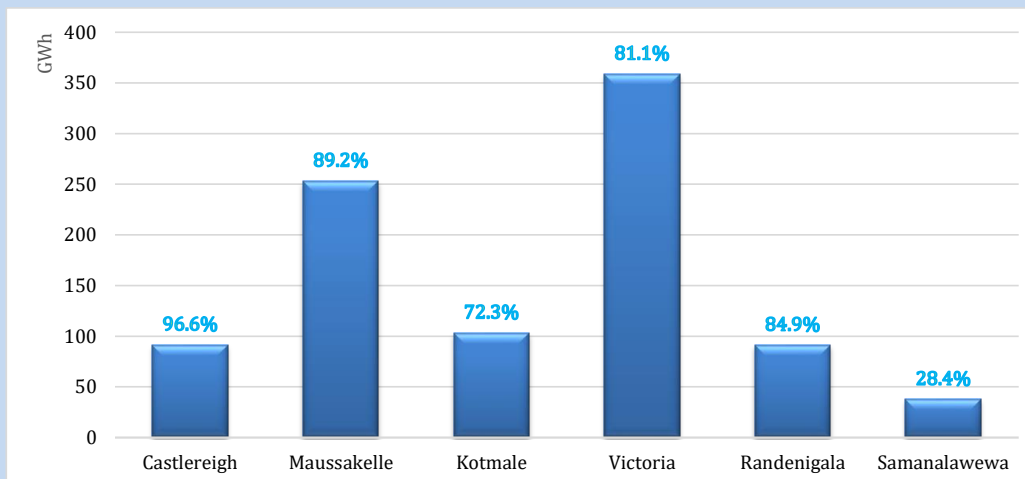
October 10, 2022



Night Peak*	1,859.2 MW
Day Peak	1,776.7 MW
Minimum Demand	1,099.2 MW

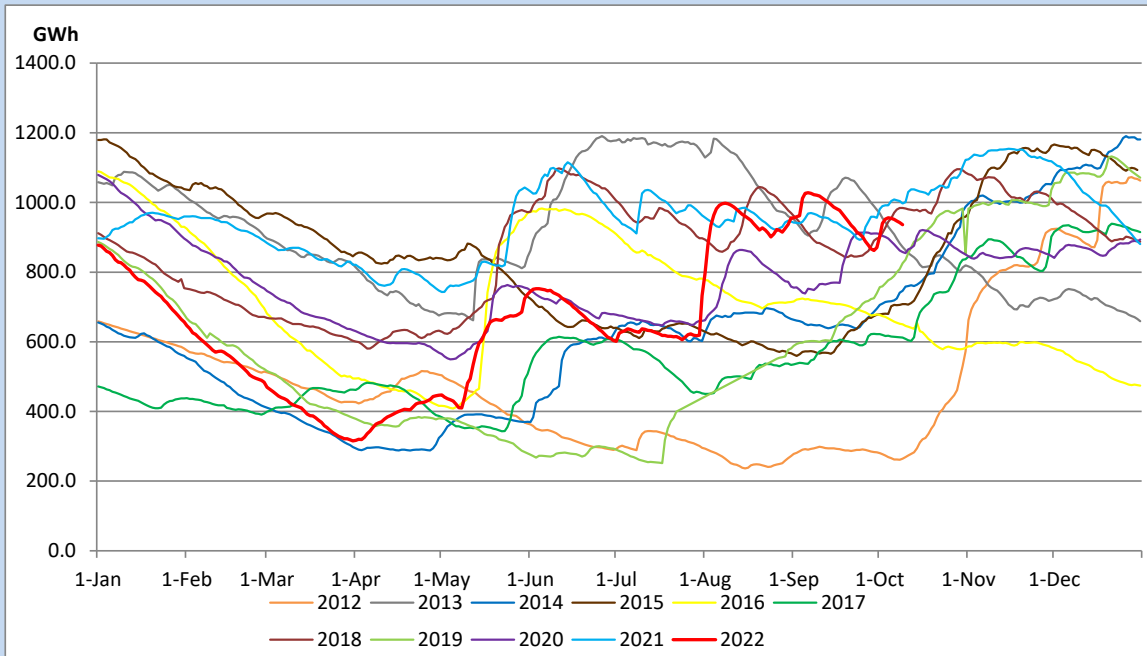
Above figures are excluding contribution from Roof Top Solar, 1MW solar, certain Wind plants and Mini Hydro plants

## Reservoir Levels - as at 06.00 Hr on October 11, 2022

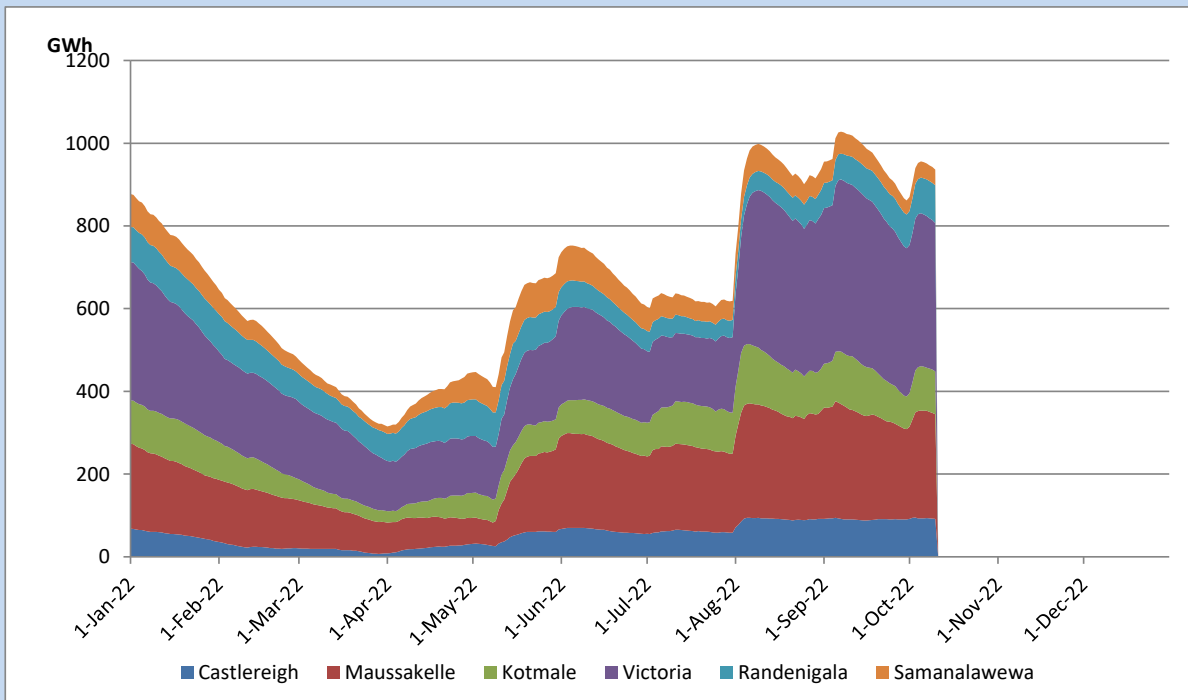


Total Reservoir Level	936.3 GWh
% of Total capacity	77.7%

## Comparison of Total Reservoir Storage Levels with Past Years

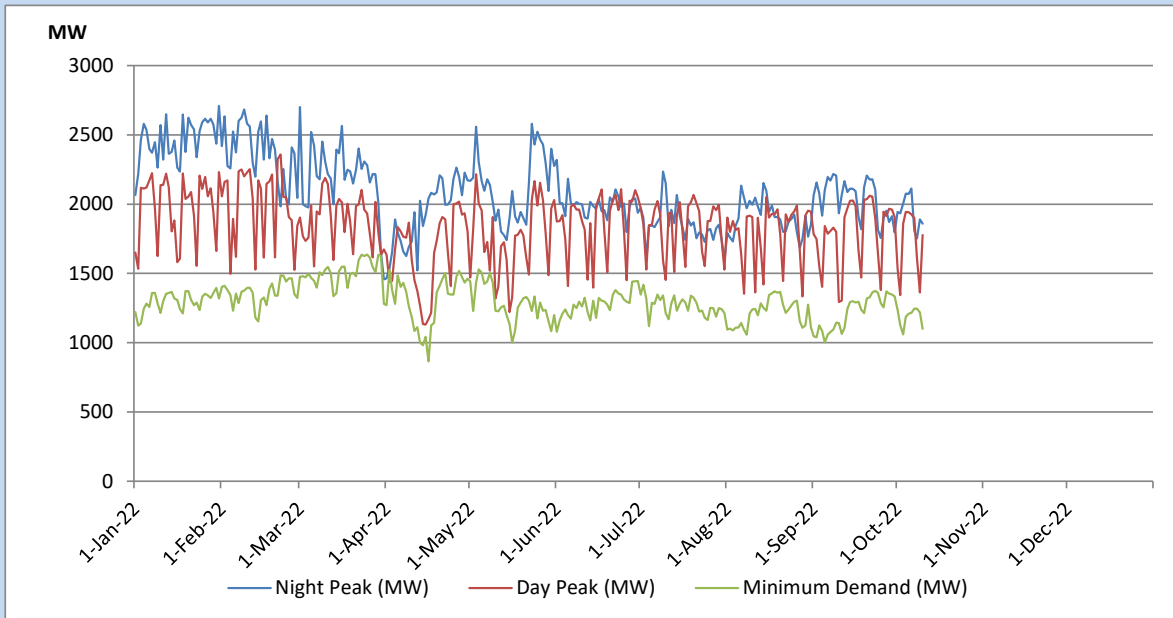


## Variation of Major Hydro Reservoir Levels in the current year (GWh)





## Variation of Demand during the current year

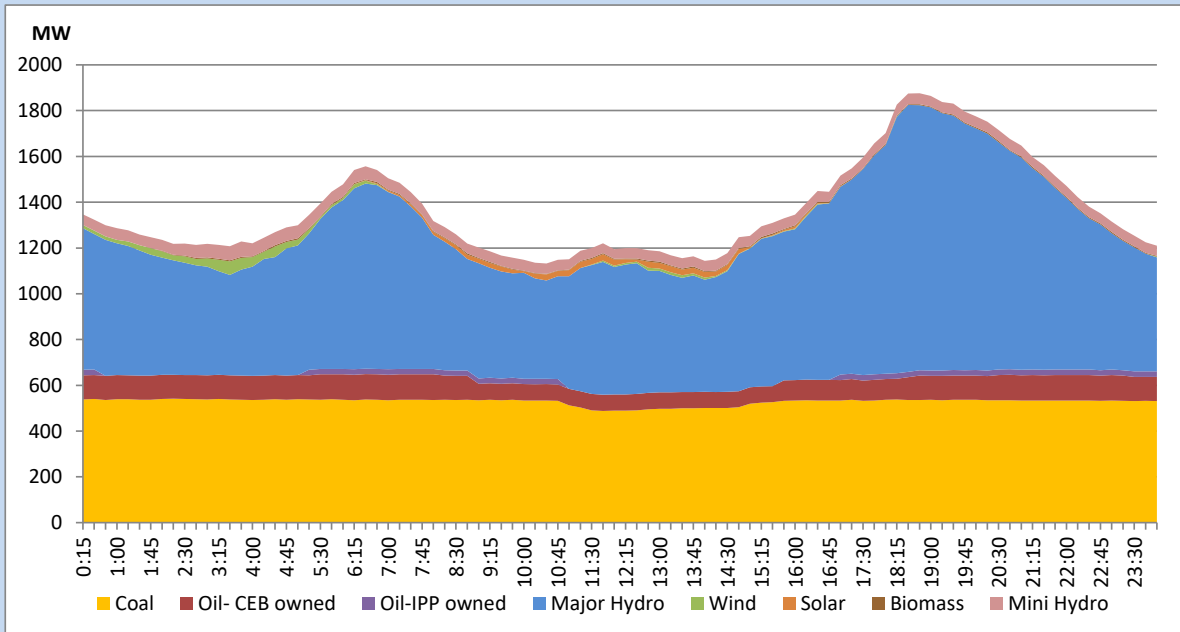


The above figures are excluding contribution from Roof Top Solar, 1MW solar, certain Wind plants and Mini Hydro plants

## Daily Load Curve of the Previous day

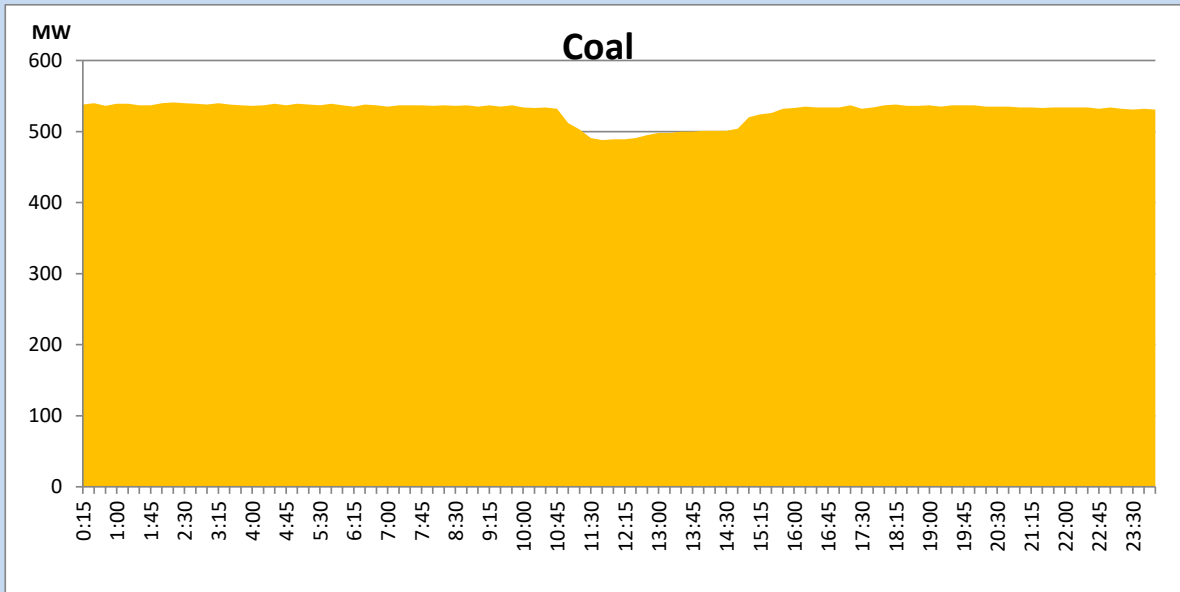
October 9, 2022

Solar and wind data is based on Telemetered Power Stations only



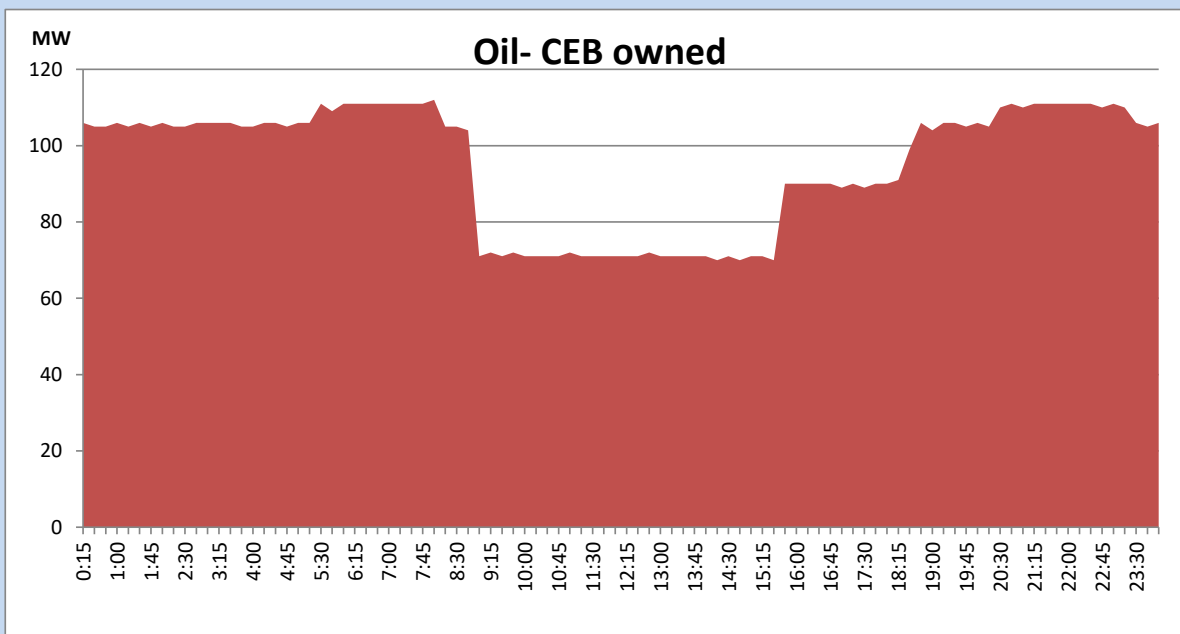
## Coal Generation during the Previous day

October 9, 2022



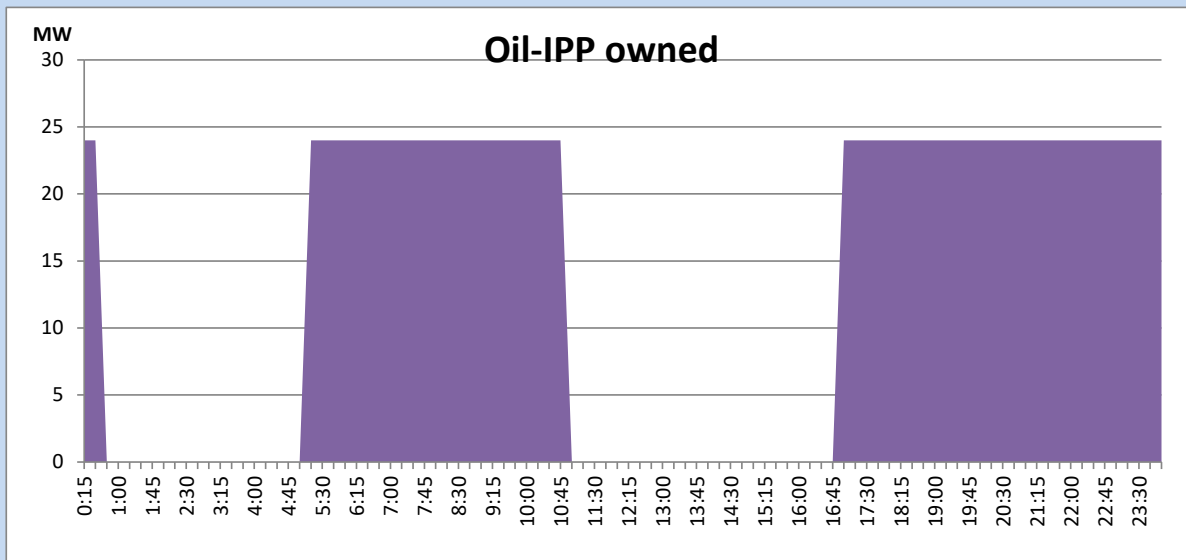
## CEB Oil Plant Generation during the Previous day

October 9, 2022



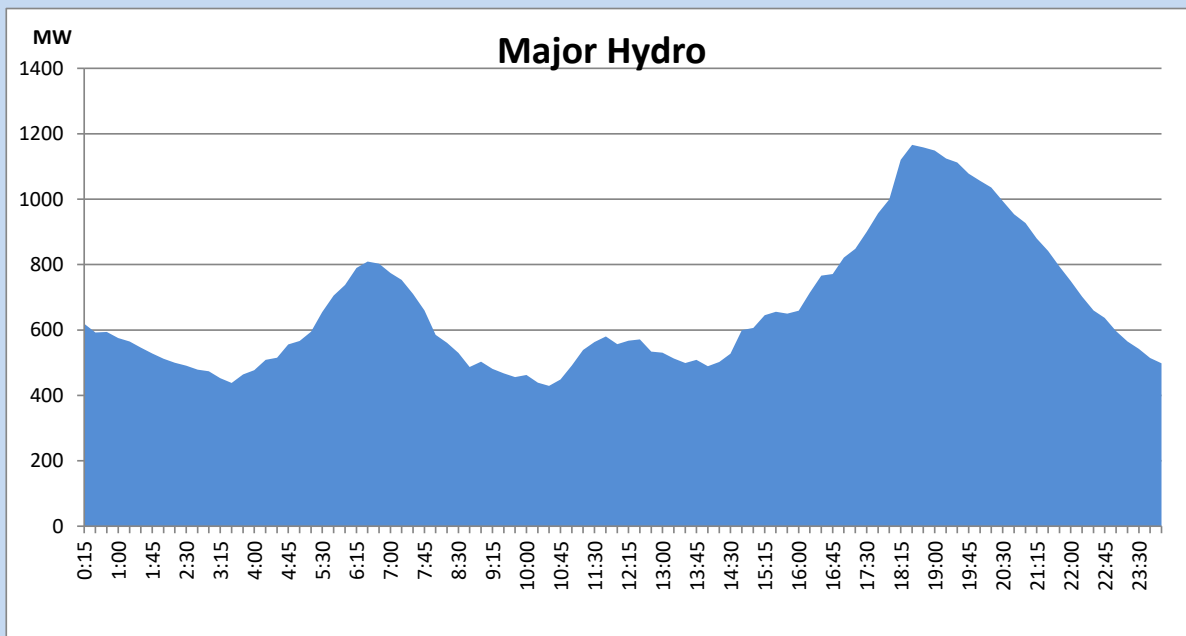
## IPP Oil Plant Generation during the Previous day

October 9, 2022



## Major Hydro Generation during the Previous day

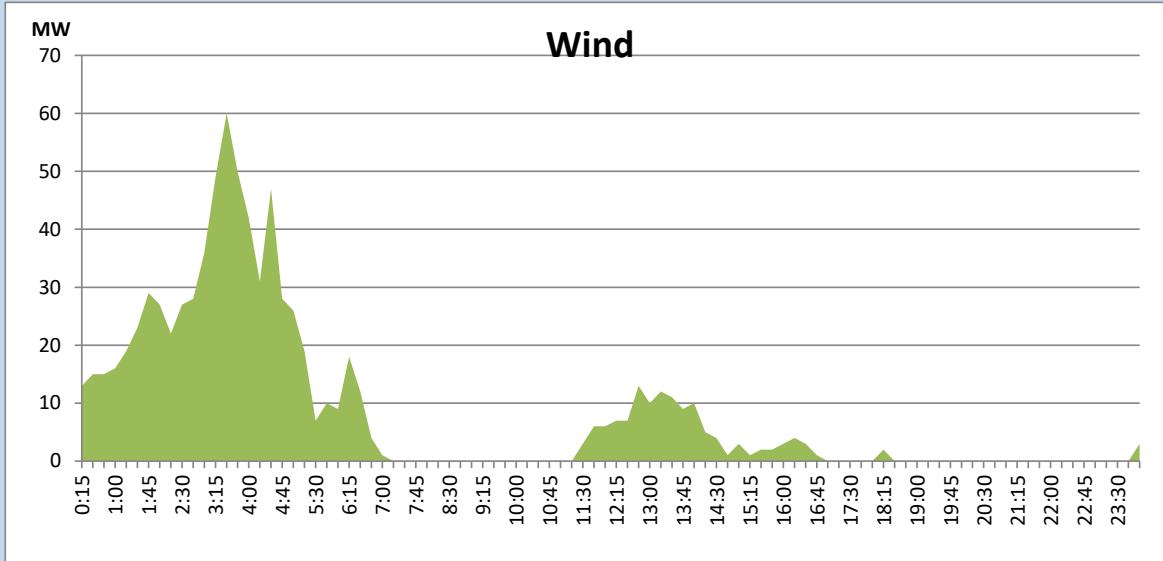
October 9, 2022



## Wind Generation during the Previous day

October 9, 2022

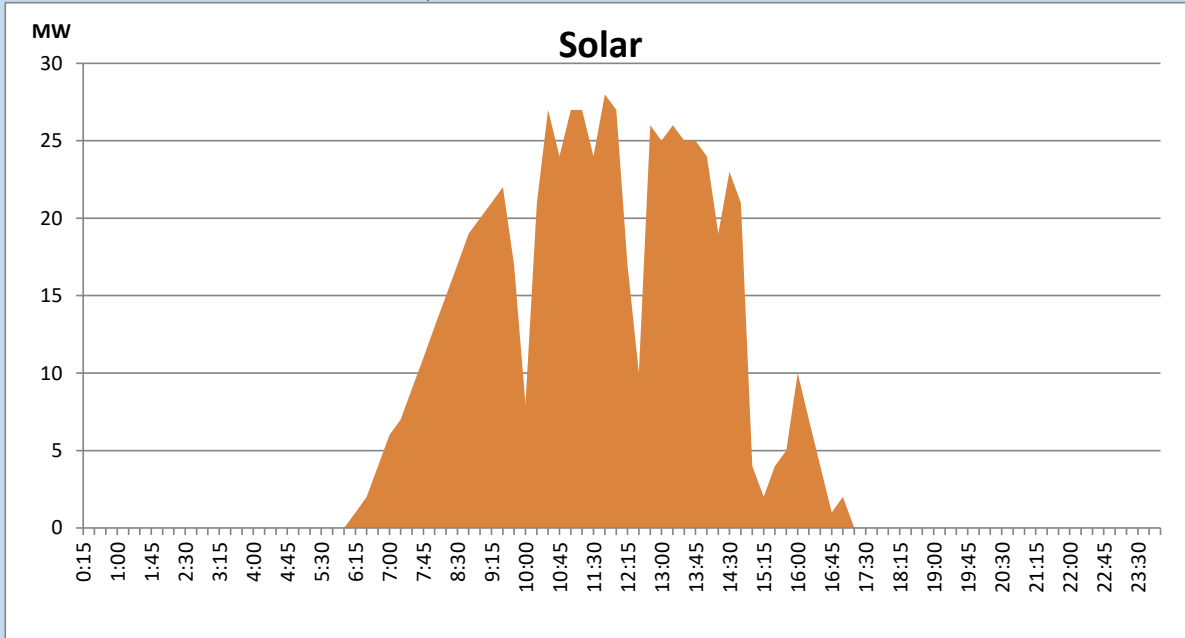
Based on Telemetered Power Stations only



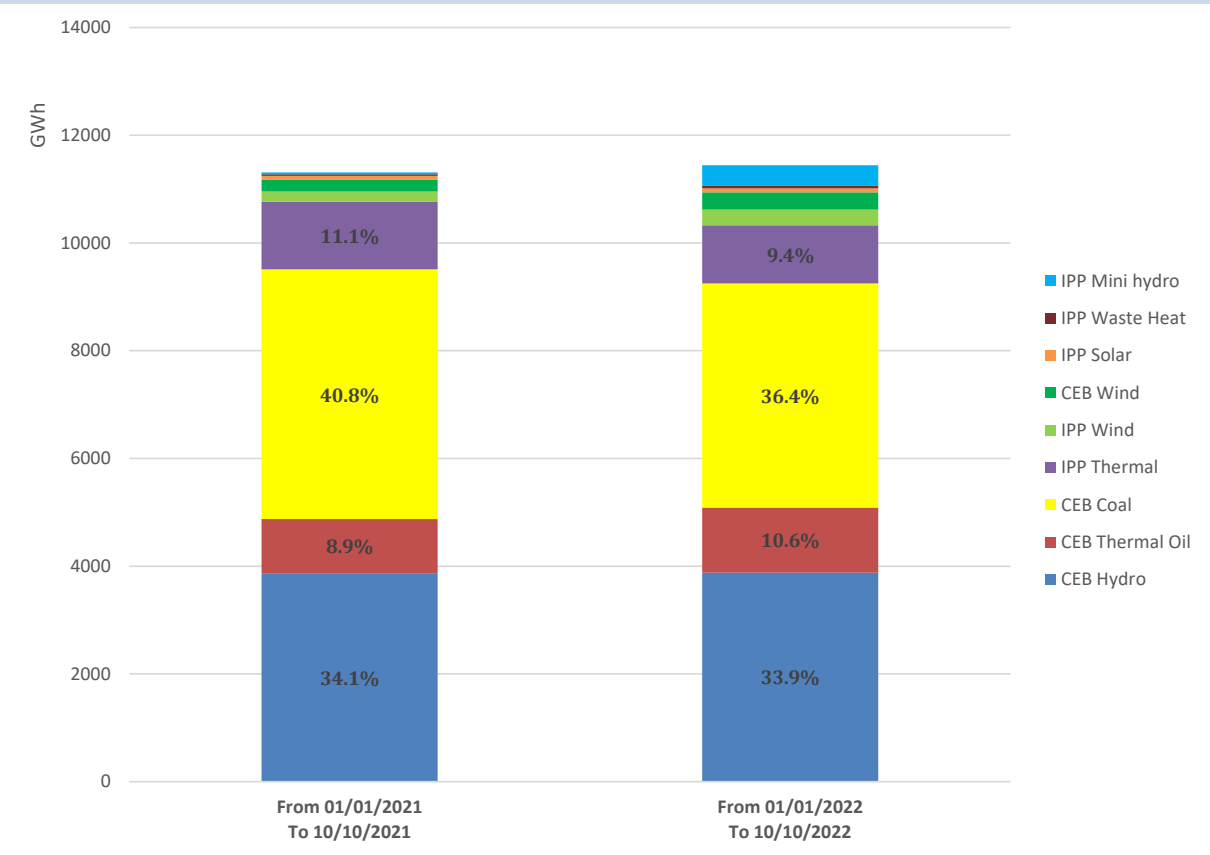
## Solar Generation during the Previous day

October 9, 2022

Based on Telemetered Power Stations only



# Cumulative Dispatch Comparison with Last Year



## Thermal Plant Fuel types

Power Station	Primary Fuel
CEB Thermal	
Sapugaskanda 1	Heavy Fuel
Sapugaskanda 2	Heavy Fuel
Kelanitissa Small Gas Turbines	Auto Diesel
GT 7 - Kelanitissa	Auto Diesel
Kelanitissa CCY	Naphtha or Diesel
Lakvijaya 1	Coal
Lakvijaya 2	Coal
Lakvijaya 3	Coal
Uthuru Janani	Heavy Fuel
Barge CEB	Heavy Fuel

Power Station	Primary Fuel
Private Thermal	
Sojitz - Kelanitissa	Auto Diesel
West Coast	Auto Diesel / Heavy Fuel
ACE Matara	Heavy Fuel
ACE Embilipitiya	Heavy Fuel

## Major Incidents during the day -as reported by CEB morning of

October 11, 2022

- 1). Rotational manual load shedding was carried out from 15:00hrs to 22:00hrs.
- 2). Sri Jayawardanapura 132/33kV T/F 02 tripped at 18:23hrs due to the operation of pressure relief valve trip. T/F 02 was normalized at 21:26hrs.