

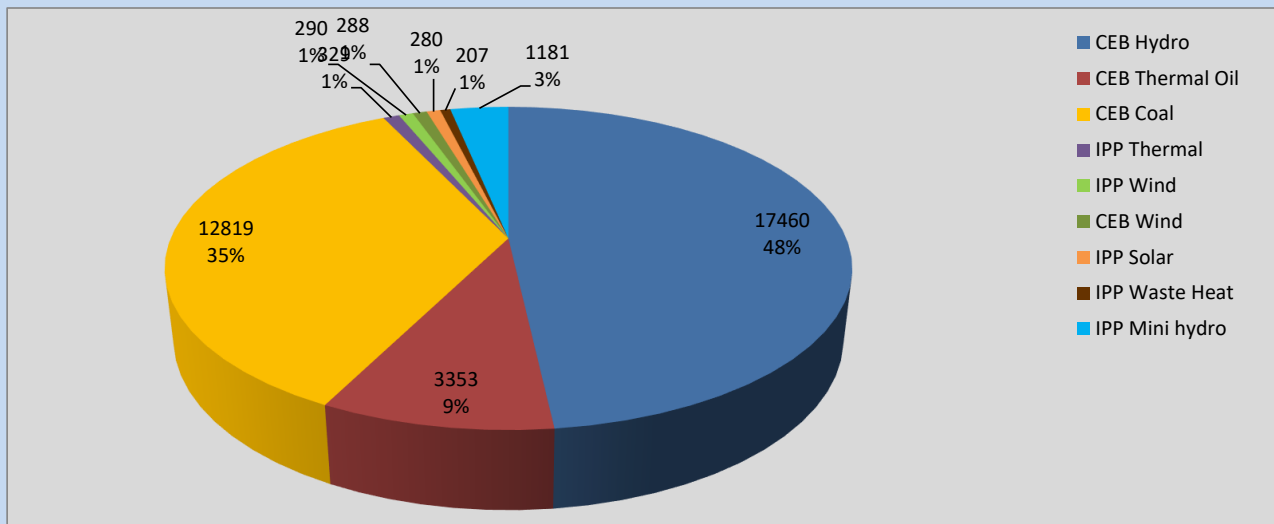
# Generation and Reservoirs Statistics

October 8, 2022



PUBLIC UTILITIES COMMISSION OF SRI LANKA

## Daily Generation Mix in MWh



**Total Generation** **36,207 MWh**

Note: Above data is excluding contribution from Roof Top Solar, 1MW Solar and certain Mini Hydro plants

## Cumulative Dispatch

Note: Following data is Excluding contribution from Roof Top Solar, 1MW solar and Mini Hydro plants

### For Current Month

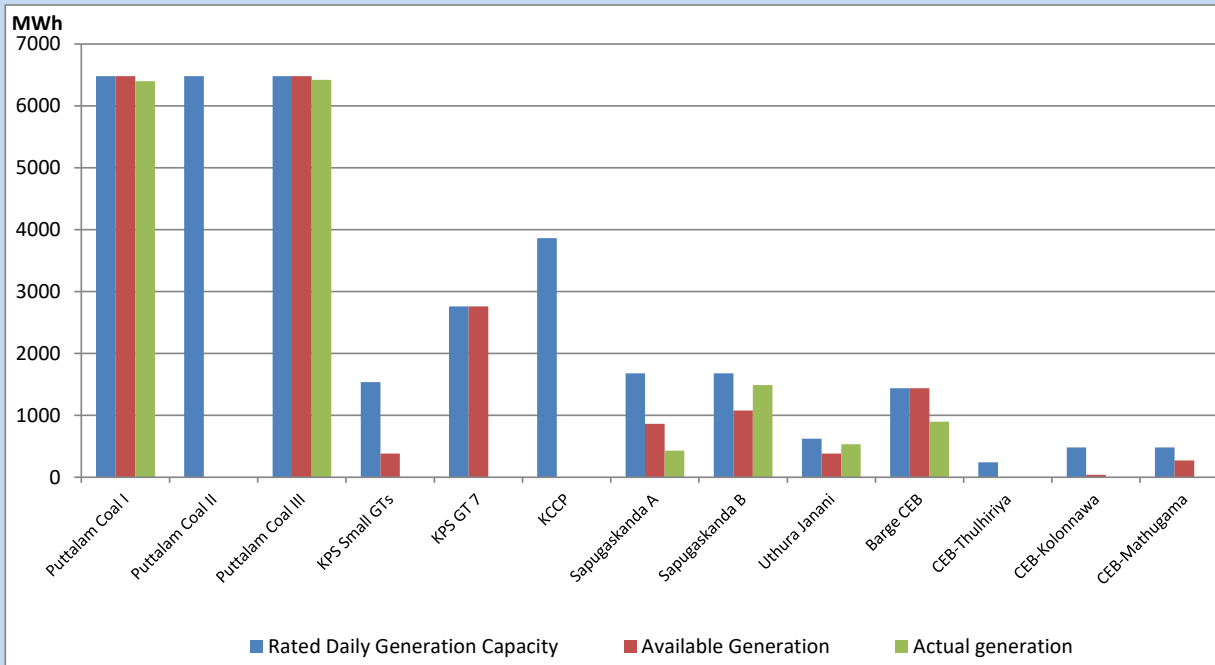
Category	Dispatch (GWh)	
CEB Hydro	145.29	47.43%
CEB Thermal Oil	24.51	8.00%
CEB Coal	95.85	31.29%
IPP Thermal	1.25	0.41%
SPP Wind	11.07	3.61%
CEB Wind	10.23	3.34%
SPP Solar	2.11	0.69%
SPP Solid Waste	1.37	0.45%
Mini Hydro	14.63	4.78%
<b>Total</b>	<b>306.31</b>	

### For Current Year

Category	Dispatch (GWh)	
CEB Hydro	3,845.5	33.80%
CEB Thermal Oil	1,203.2	10.58%
CEB Coal	4,137.0	36.37%
IPP Thermal	1,077.0	9.47%
SPP Wind	292.0	2.57%
CEB Wind	316.3	2.78%
SPP Solar	73.5	0.65%
SPP Solid Waste	56.2	0.49%
Mini Hydro	375.2	3.30%
<b>Total</b>	<b>11,375.6</b>	

## CEB owned Thermal Plant Dispatch

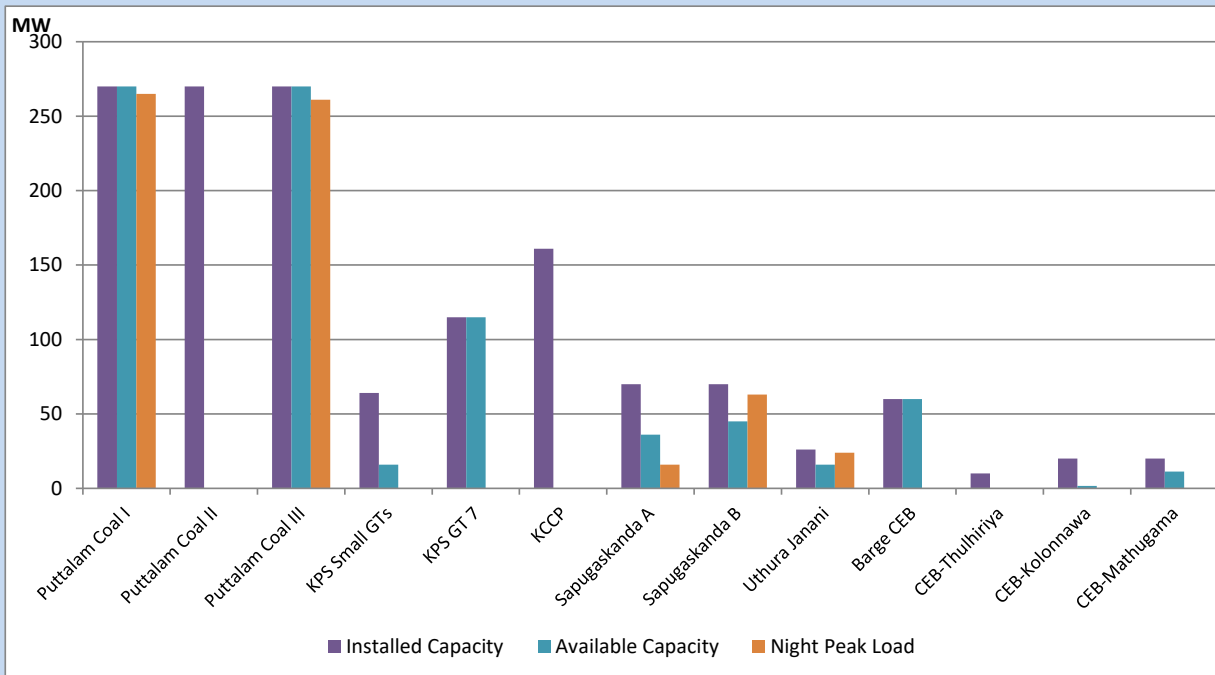
October 8, 2022



Available Generation is estimated based on plant availability at 6.00am on

October 9, 2022

## CEB owned Thermal Plant Loading at the Night Peak



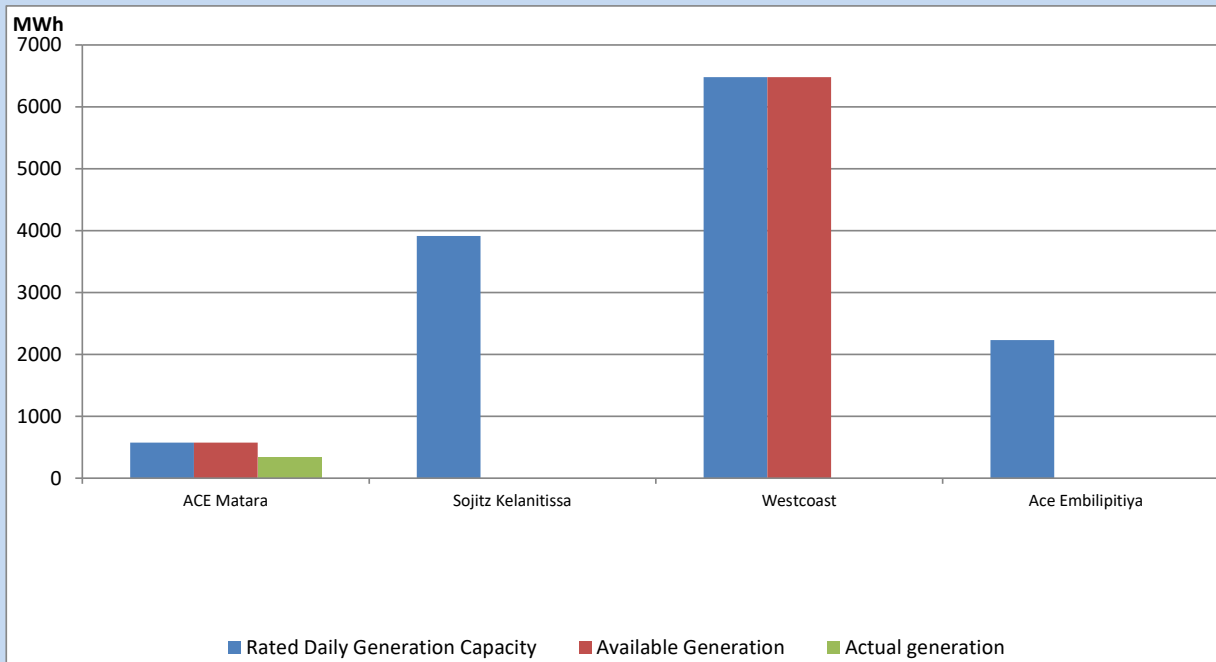
Note- Plant availability is recorded at 6.00 am on

October 9, 2022

## IPP owned Thermal Plant Dispatch

October 8, 2022

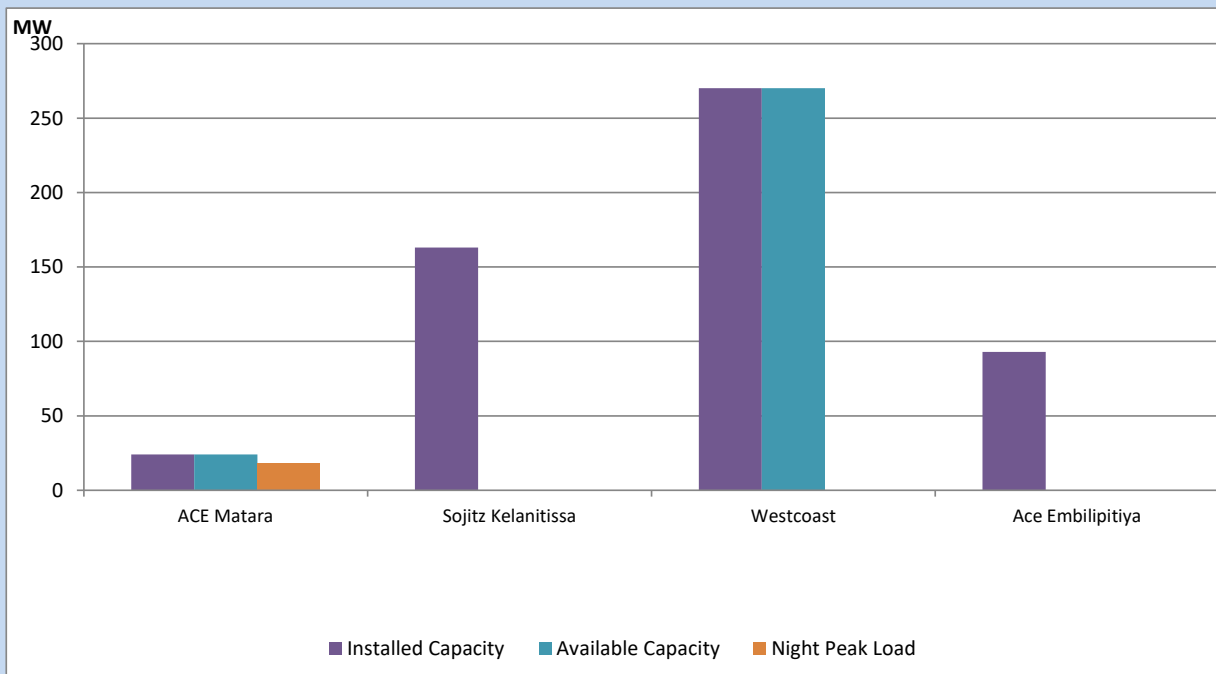
Asia Power, V Power Pallekale, Vpower Galle, V Power Horana, Vpower Hambantota, Vpower Valachchena and Altaqa Mahiyanganaya are not available due to expiration of PPAs



Available Generation is estimated based on plant availability at 6.00am on

October 9, 2022

## IPP owned Thermal Plant Loading at the Night Peak

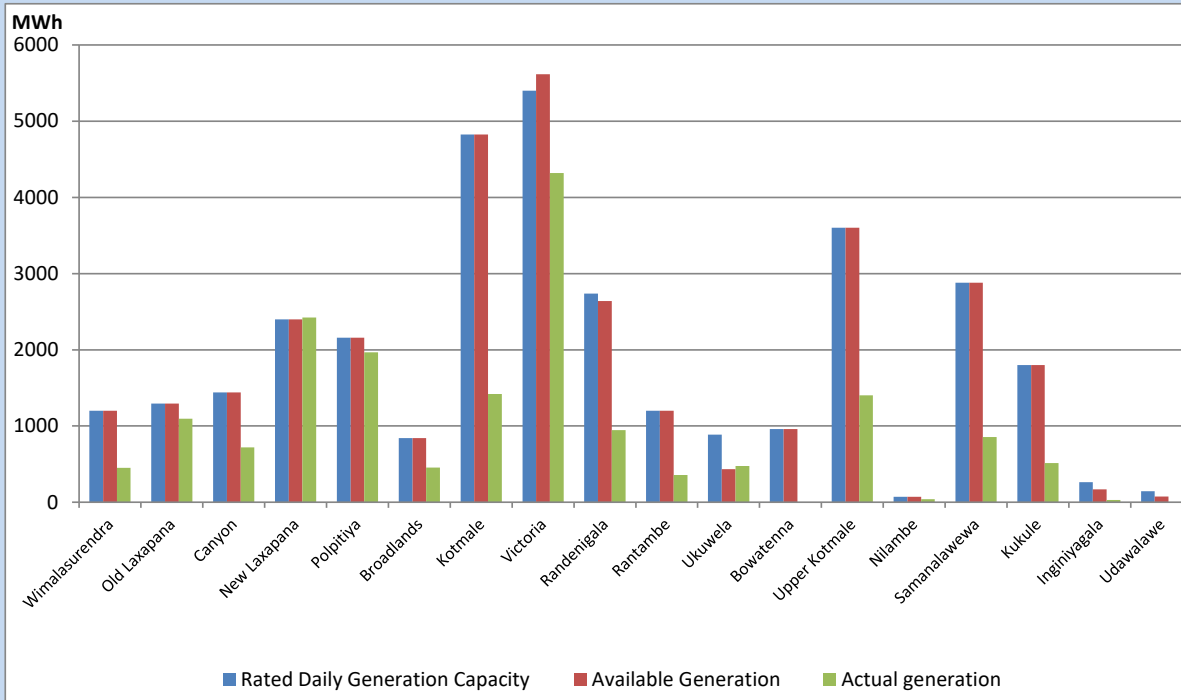


Note- Plant availability is recorded at 6.00 am on

October 9, 2022

## Major Hydro Plant Dispatch

October 8, 2022

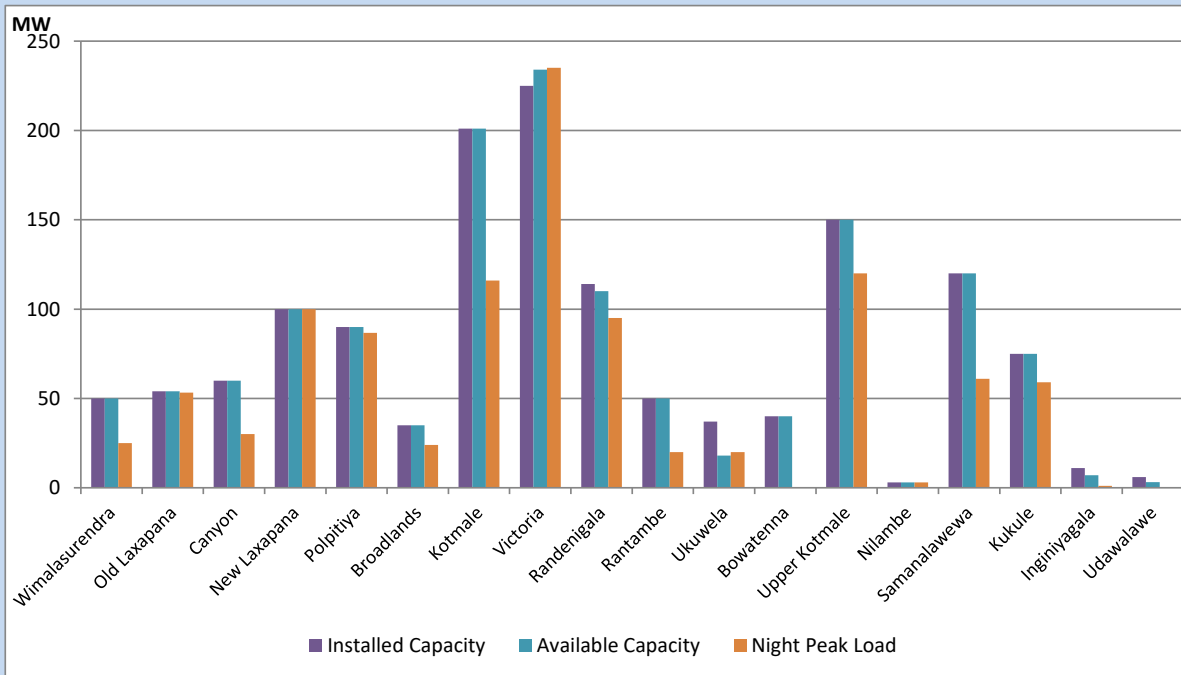


Available Generation is estimated based on plant availability at 6.00am on  
Broadlands power plant is operating in the Commissioning Stage

October 9, 2022

## Major Hydro Plant Loading at Night Peak

October 8, 2022



Note- Plant availability is recorded at 6.00 am on  
Broadlands power plant is operating in the Commissioning Stage

October 9, 2022

## Summary of Major Plant performance

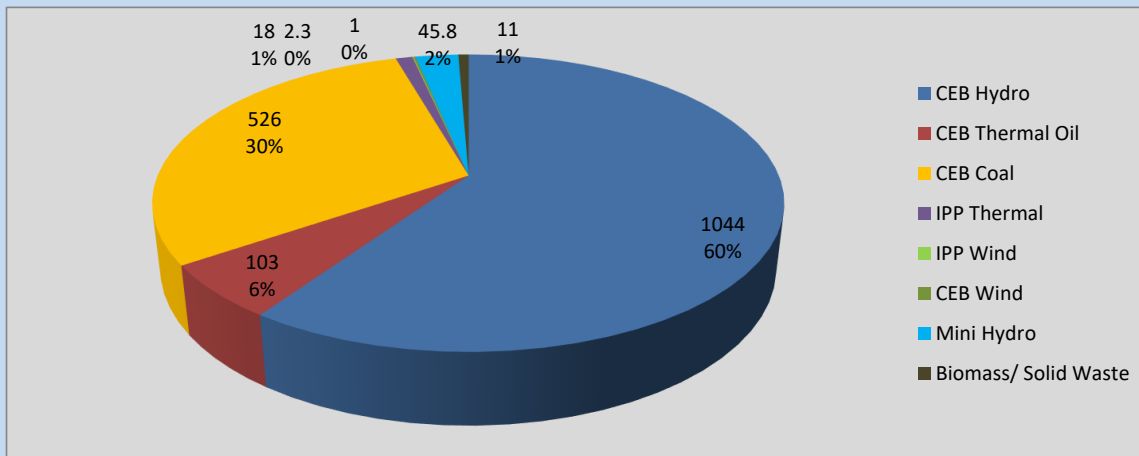
Plant	Installed Capacity	Plant Availability	Night peak Load	Plant Dispatch
	(MW)	(MW)	(MW)	(MWh)
Wimalasurendra	50	50	25	450
Old Laxapana	54	54	53	1,095
Canyon	60	60	30	720
New Laxapana	100	100	100	2,423
Polpitiya	90	90	87	1,966
Broadlands	35	35	24	454
Kotmale	201	201	116	1,420
Victoria	225	234	235	4,319
Randenigala	114	110	95	945
Rantambe	50	50	20	356
Ukuwela	37	18	20	474
Bowatenna	40	40	0	0
Upper Kotmale	150	150	120	1,403
Nilambe	3	3	3	39
Samanalawewa	120	120	61	855
Kukule	75	75	59	513
Inginiyagala	11	7	1	28
Udawalawe	6	3	0	0
Puttalam Coal I	270	270	265	6,398
Puttalam Coal II	270	0	0	0
Puttalam Coal III	270	270	261	6,421
KPS Small GTs	64	16	0	0
KPS GT 7	115	115	0	0
KCCP	161	0	0	0
Sapugaskanda A	70	36	16	430
Sapugaskanda B	70	45	63	1,492
Uthura Janani	26	16	24	534
Barge CEB	60	60	0	897
CEB-Thulhiriya	10	0	0	0
CEB-Kolonnawa	20	2	0	0
CEB-Mathugama	20	11	0	0
ACE Matara	24	24	18	329
Sojitz Kelanitissa	163	0	0	0
West Coast	270	270	0	0
ACE Embilipitiya	93	0	0	0
<b>Total</b>	<b>3,397</b>	<b>2,535</b>	<b>1,756</b>	<b>36,207</b>

Plant availability is the availability recorded at 6 am on

October 9, 2022

## Contribution to the Night Peak in MW

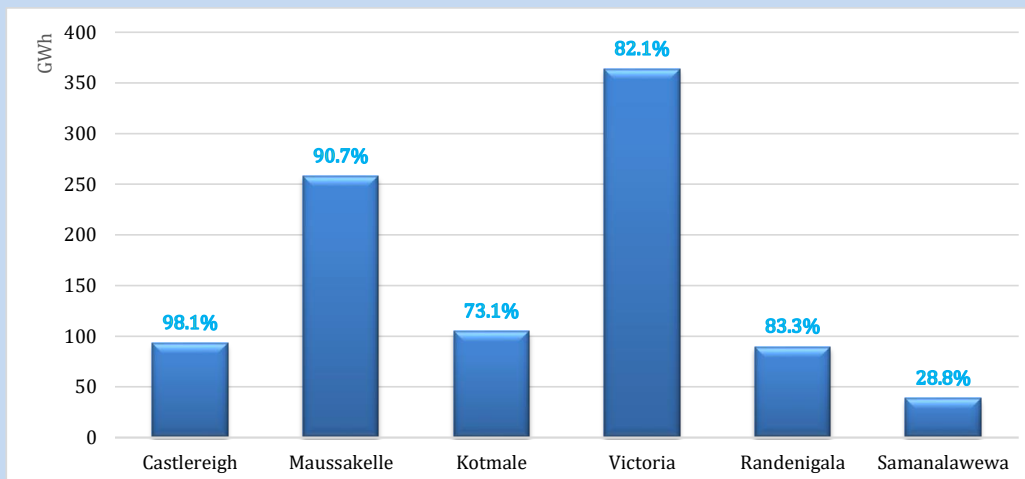
October 8, 2022



Night Peak*	1,751.0 MW
Day Peak	1,611.5 MW
Minimum Demand	1,245.7 MW

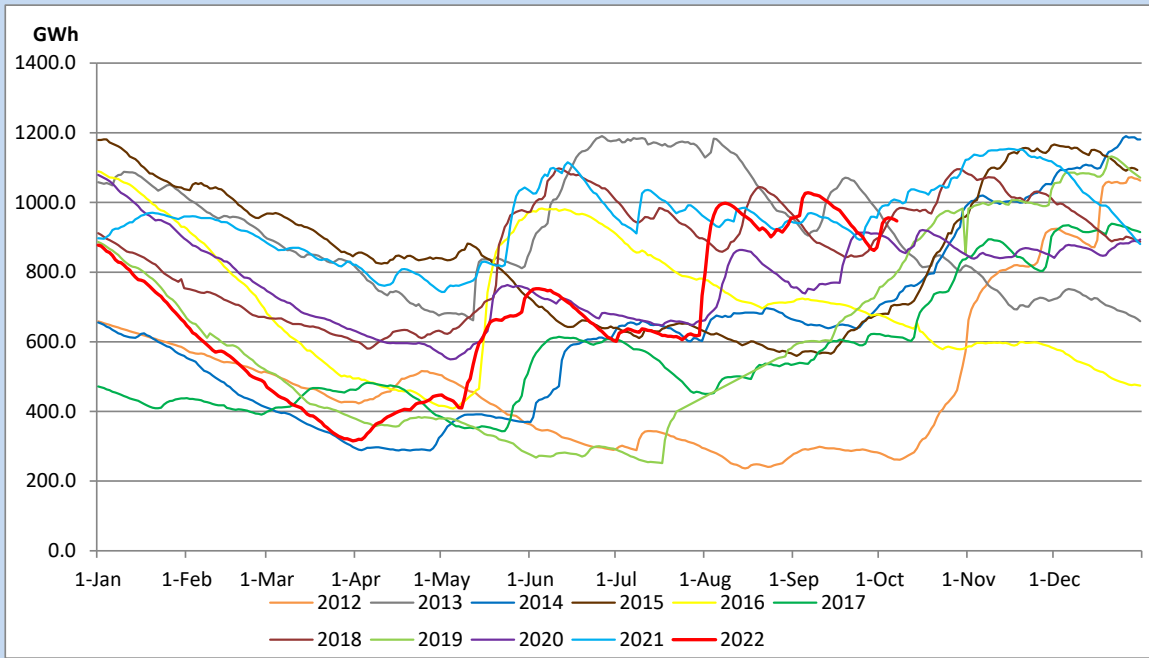
Above figures are excluding contribution from Roof Top Solar, 1MW solar, certain Wind plants and Mini Hydro plants

## Reservoir Levels - as at 06.00 Hr on October 9, 2022

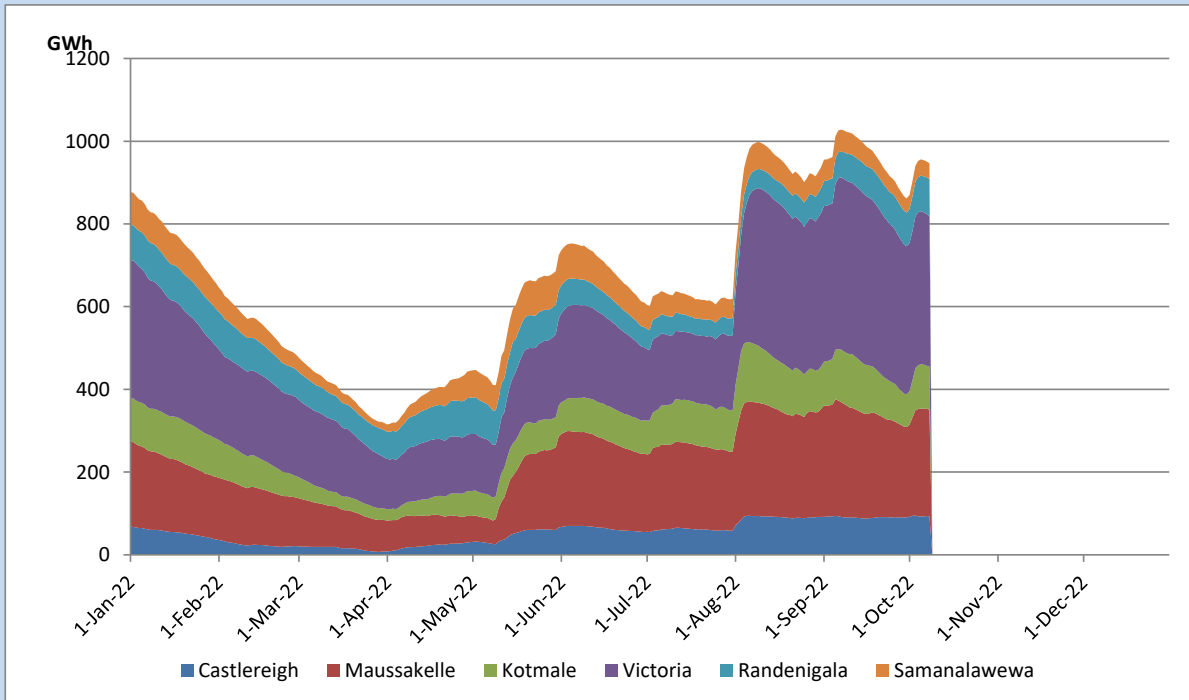


Total Reservoir Level	946.7 GWh
% of Total capacity	78.5%

## Comparison of Total Reservoir Storage Levels with Past Years

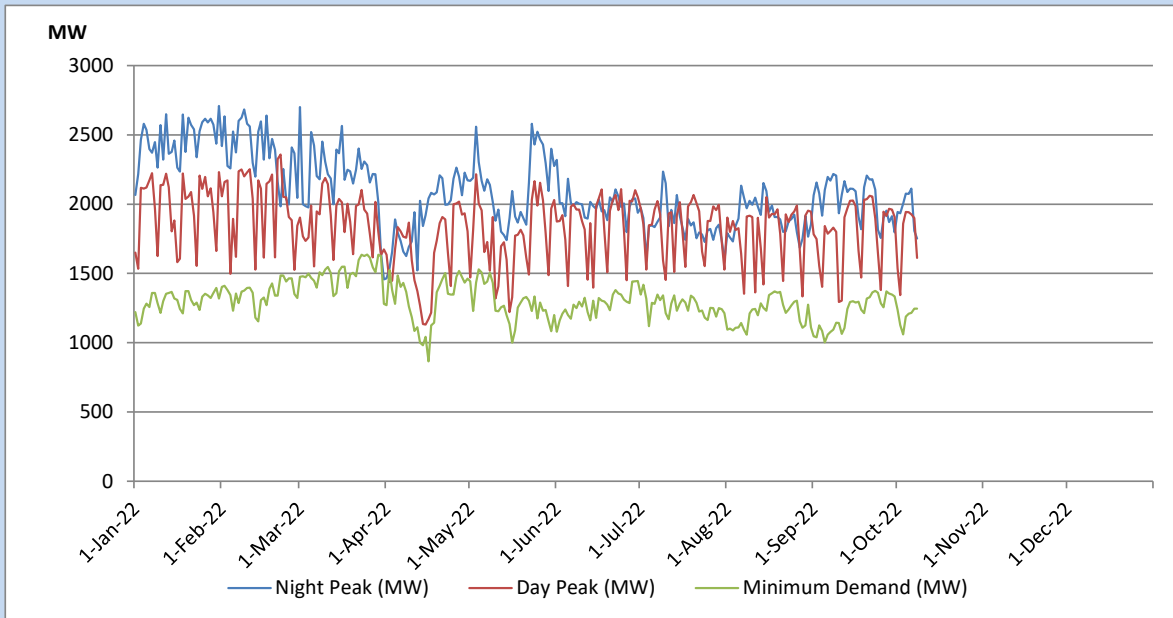


## Variation of Major Hydro Reservoir Levels in the current year (GWh)





## Variation of Demand during the current year

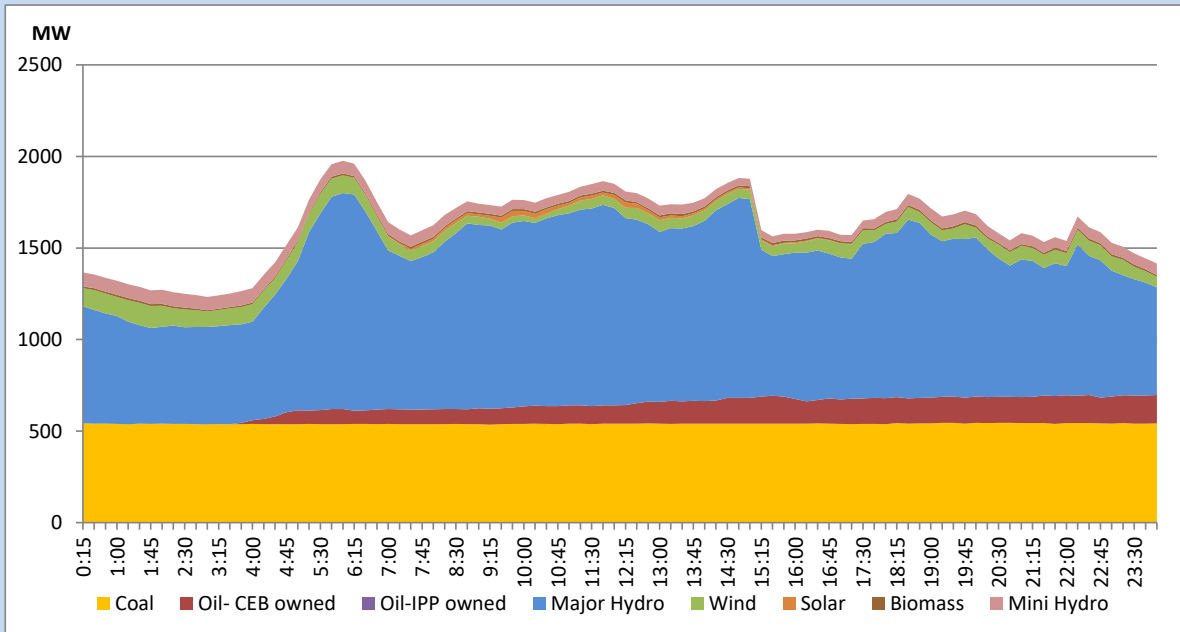


The above figures are excluding contribution from Roof Top Solar, 1MW solar, certain Wind plants and Mini Hydro plants

## Daily Load Curve of the Previous day

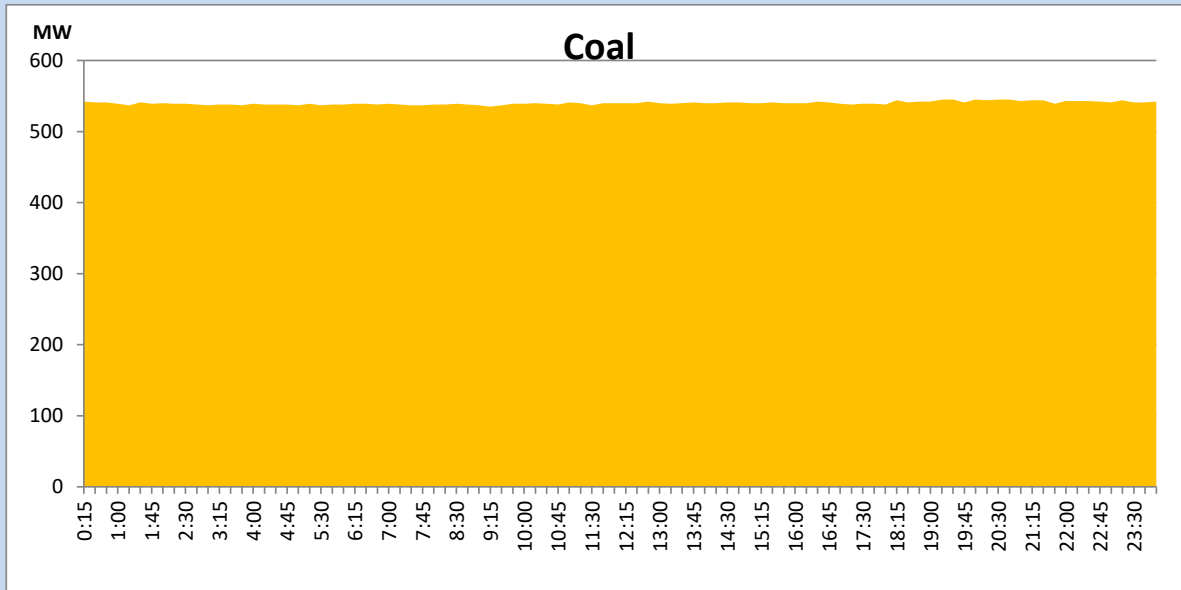
October 7, 2022

Solar and wind data is based on Telemetered Power Stations only



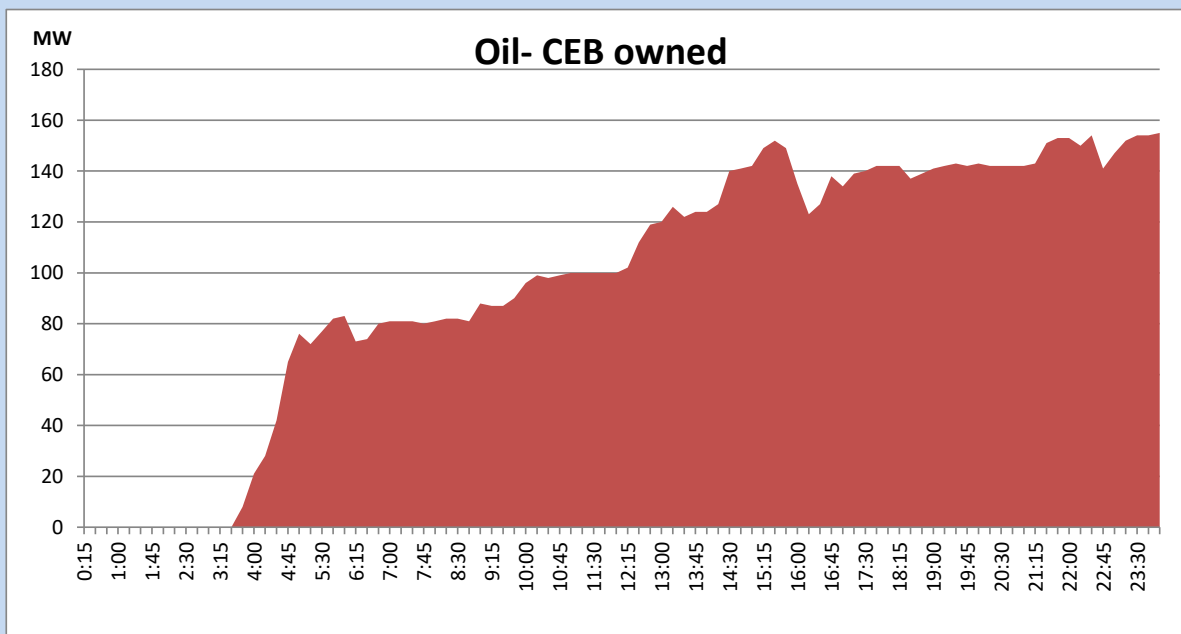
## Coal Generation during the Previous day

October 7, 2022



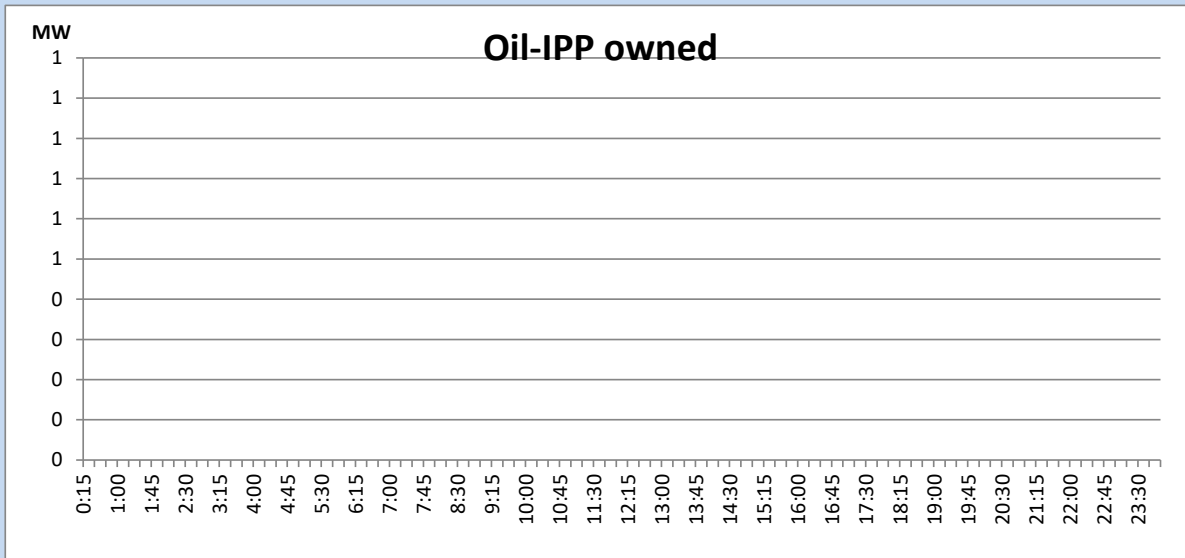
## CEB Oil Plant Generation during the Previous day

October 7, 2022



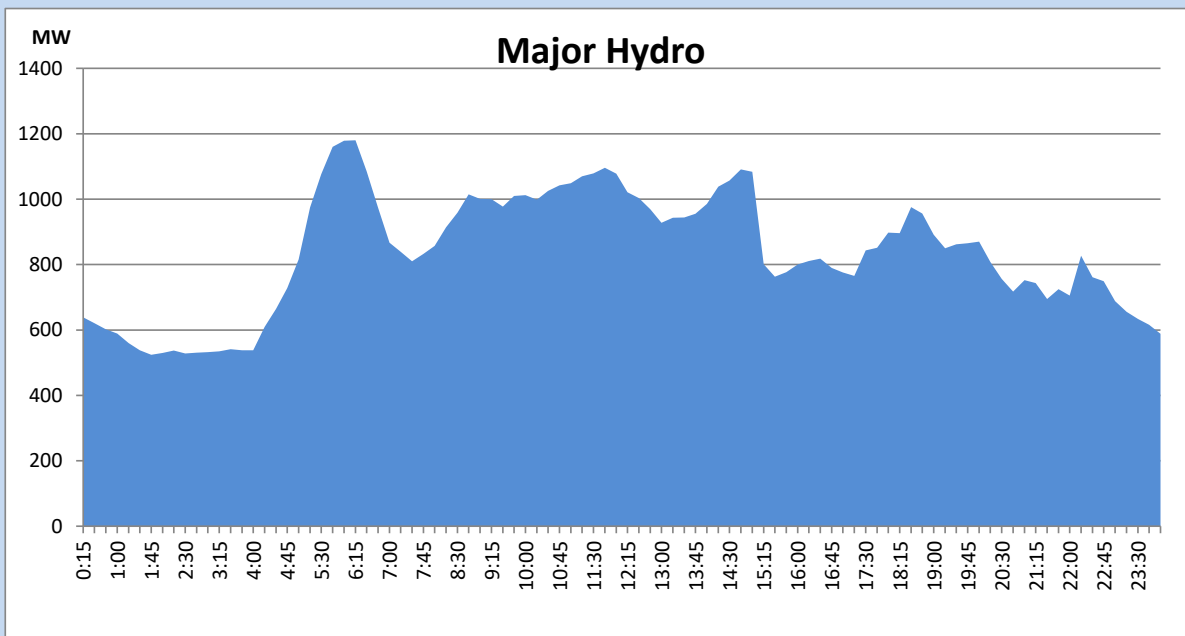
## IPP Oil Plant Generation during the Previous day

October 7, 2022



## Major Hydro Generation during the Previous day

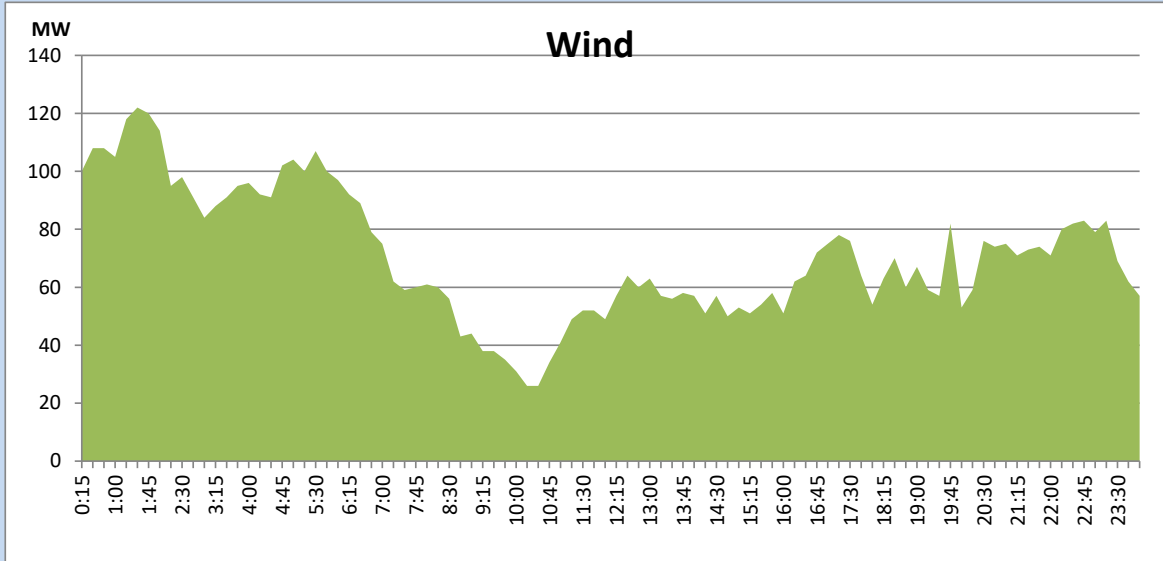
October 7, 2022



## Wind Generation during the Previous day

October 7, 2022

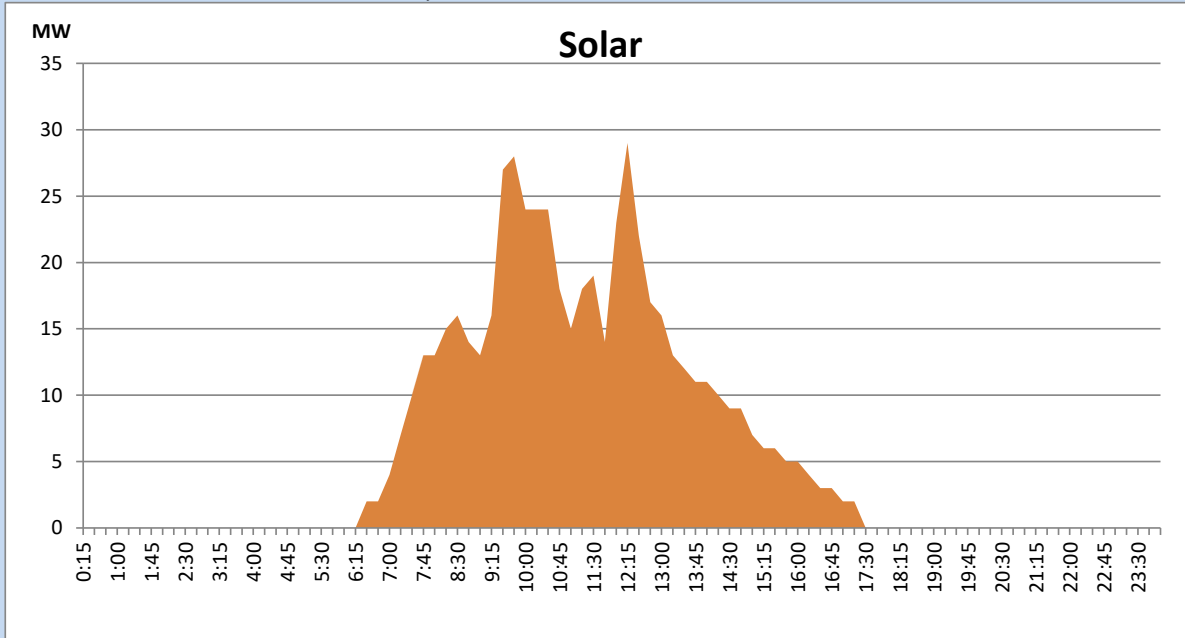
Based on Telemetered Power Stations only



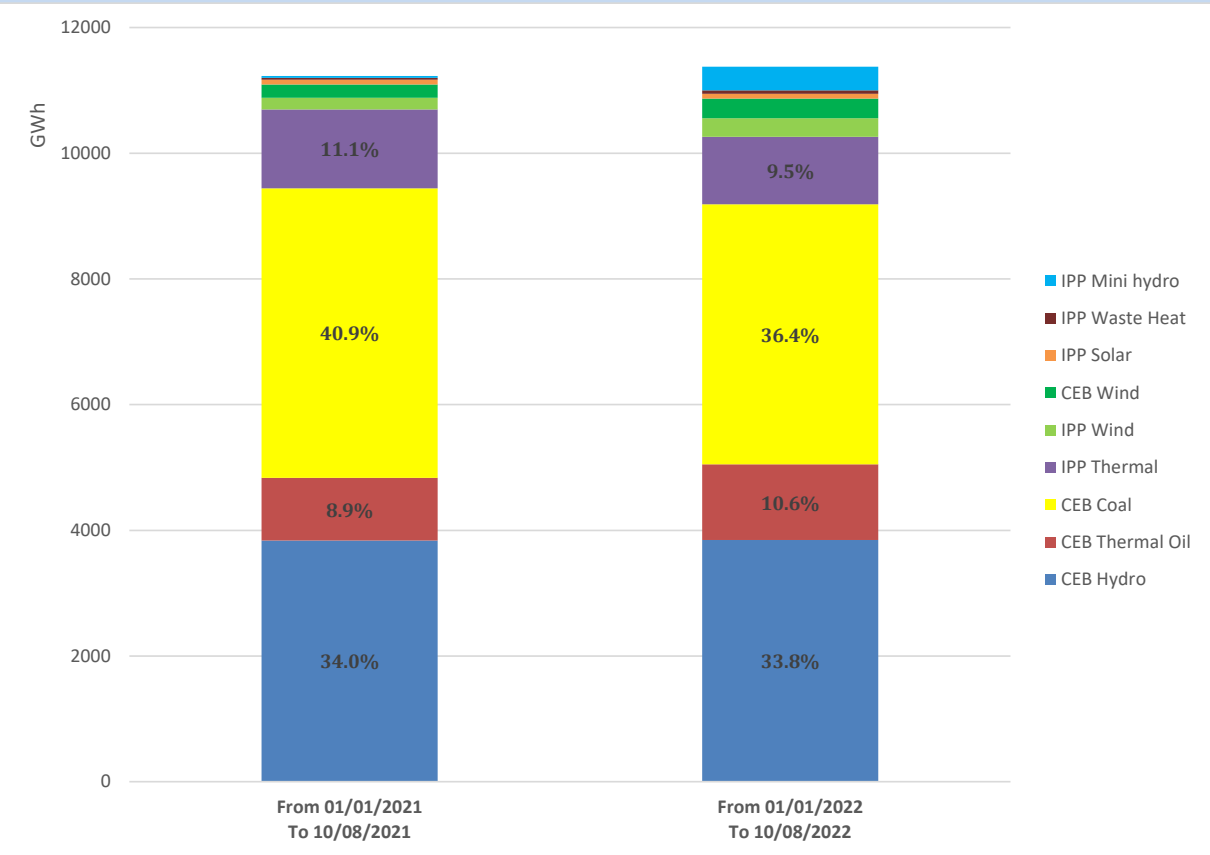
## Solar Generation during the Previous day

October 7, 2022

Based on Telemetered Power Stations only



# Cumulative Dispatch Comparison with Last Year



## Thermal Plant Fuel types

Power Station	Primary Fuel
CEB Thermal	
Sapugaskanda 1	Heavy Fuel
Sapugaskanda 2	Heavy Fuel
Kelanitissa Small Gas Turbines	Auto Diesel
GT 7 - Kelanitissa	Auto Diesel
Kelanitissa CCY	Naphtha or Diesel
Lakvijaya 1	Coal
Lakvijaya 2	Coal
Lakvijaya 3	Coal
Uthuru Janani	Heavy Fuel
Barge CEB	Heavy Fuel

Power Station	Primary Fuel
Private Thermal	
Sojitz - Kelanitissa	Auto Diesel
West Coast	Auto Diesel / Heavy Fuel
ACE Matara	Heavy Fuel
ACE Embilipitiya	Heavy Fuel

## Major Incidents during the day -as reported by CEB morning of

October 9, 2022

- 1) Rotational manual load shedding was carried out from 15:00hrs to 22:00hrs.