

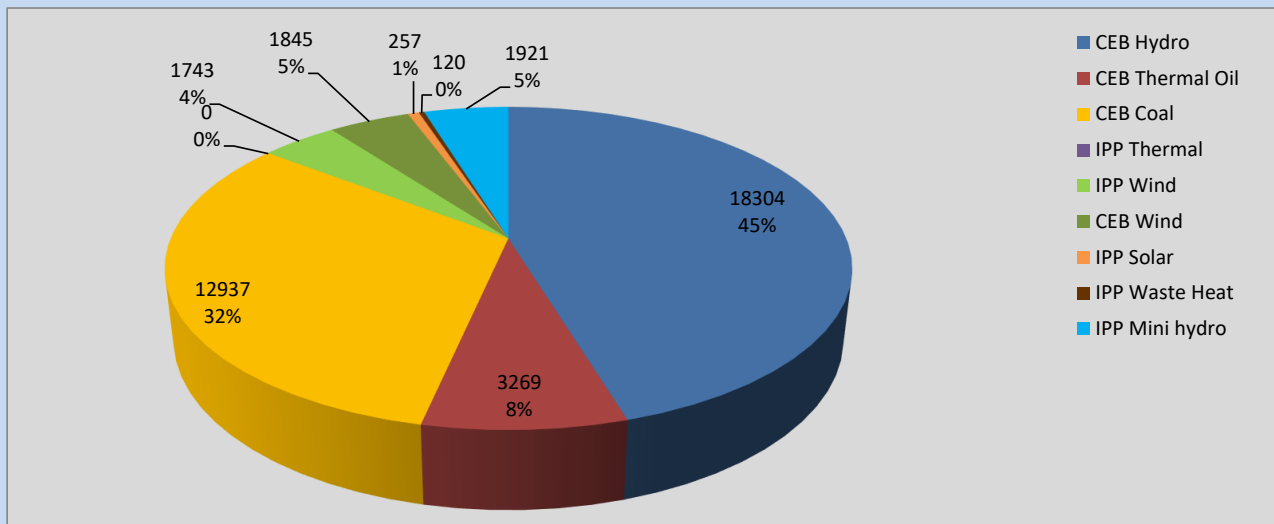
# Generation and Reservoirs Statistics

October 6, 2022



PUBLIC UTILITIES COMMISSION OF SRI LANKA

## Daily Generation Mix in MWh



**Total Generation** **40,396 MWh**

Note: Above data is excluding contribution from Roof Top Solar, 1MW Solar and certain Mini Hydro plants

## Cumulative Dispatch

Note: Following data is Excluding contribution from Roof Top Solar, 1MW solar and Mini Hydro plants

### For Current Month

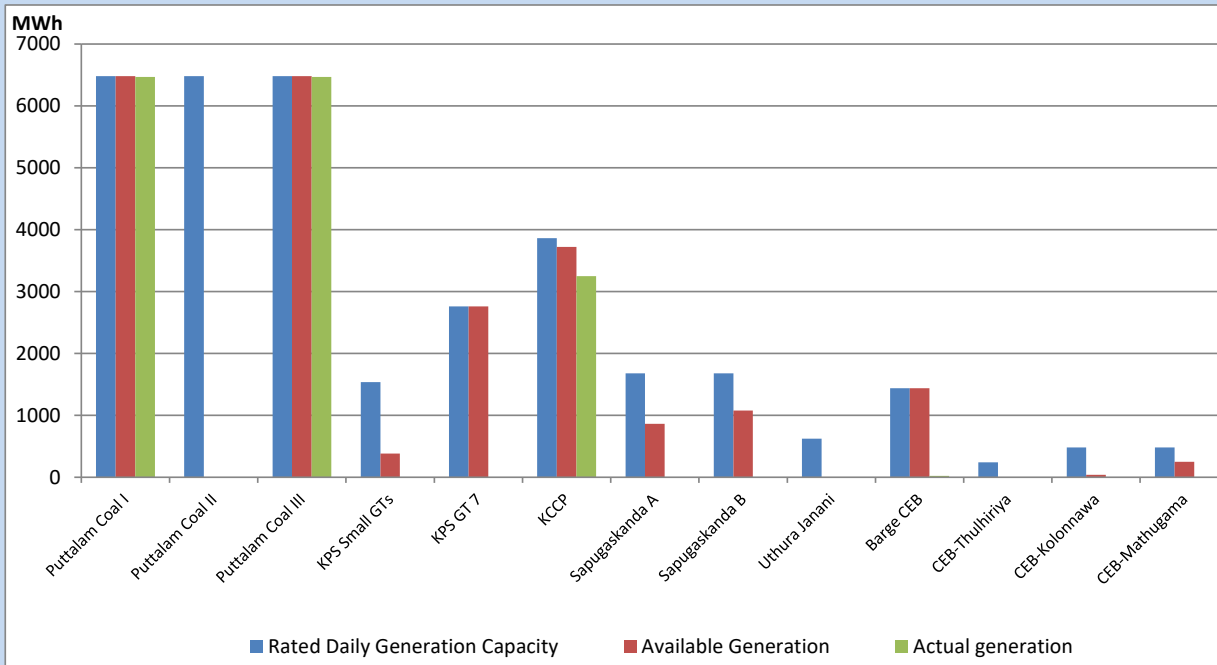
Category	Dispatch (GWh)	Percentage
CEB Hydro	107.40	46.58%
CEB Thermal Oil	18.84	8.17%
CEB Coal	70.04	30.38%
IPP Thermal	0.92	0.40%
SPP Wind	9.88	4.29%
CEB Wind	8.83	3.83%
SPP Solar	1.60	0.69%
SPP Solid Waste	0.92	0.40%
Mini Hydro	12.12	5.26%
<b>Total</b>	<b>230.55</b>	

### For Current Year

Category	Dispatch (GWh)	Percentage
CEB Hydro	3,807.6	33.70%
CEB Thermal Oil	1,197.5	10.60%
CEB Coal	4,111.2	36.38%
IPP Thermal	1,076.7	9.53%
SPP Wind	290.9	2.57%
CEB Wind	314.9	2.79%
SPP Solar	73.0	0.65%
SPP Solid Waste	55.8	0.49%
Mini Hydro	372.7	3.30%
<b>Total</b>	<b>11,299.9</b>	

## CEB owned Thermal Plant Dispatch

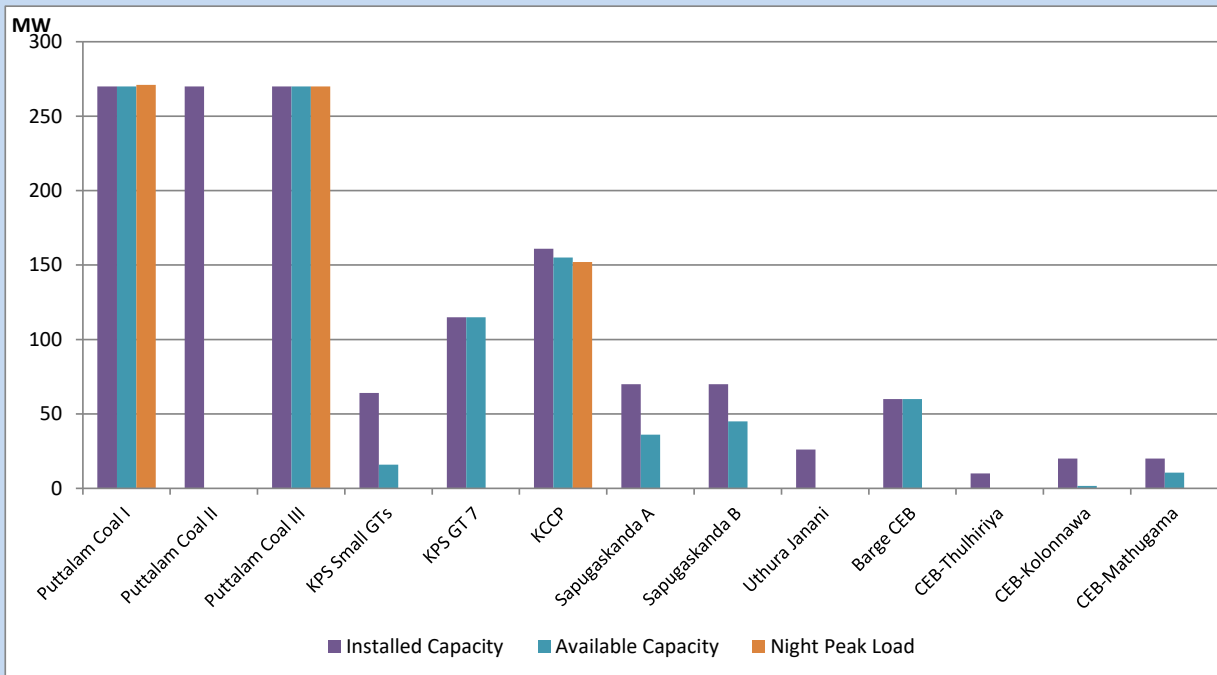
October 6, 2022



Available Generation is estimated based on plant availability at 6.00am on

October 7, 2022

## CEB owned Thermal Plant Loading at the Night Peak



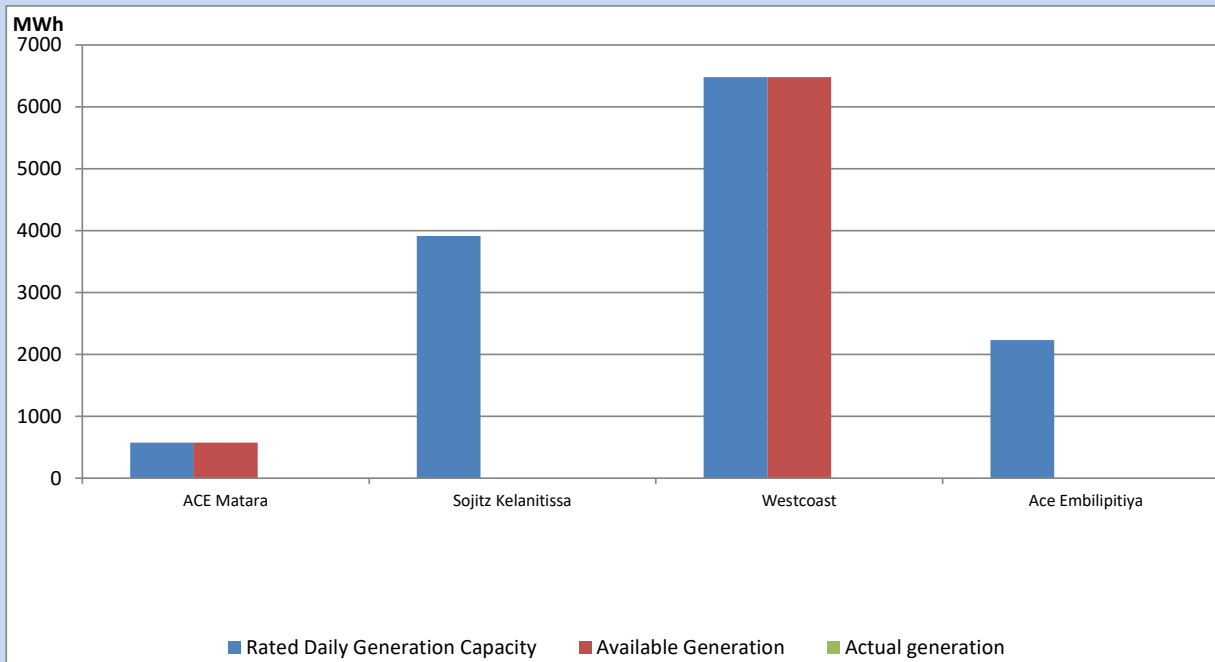
Note- Plant availability is recorded at 6.00 am on

October 7, 2022

## IPP owned Thermal Plant Dispatch

October 6, 2022

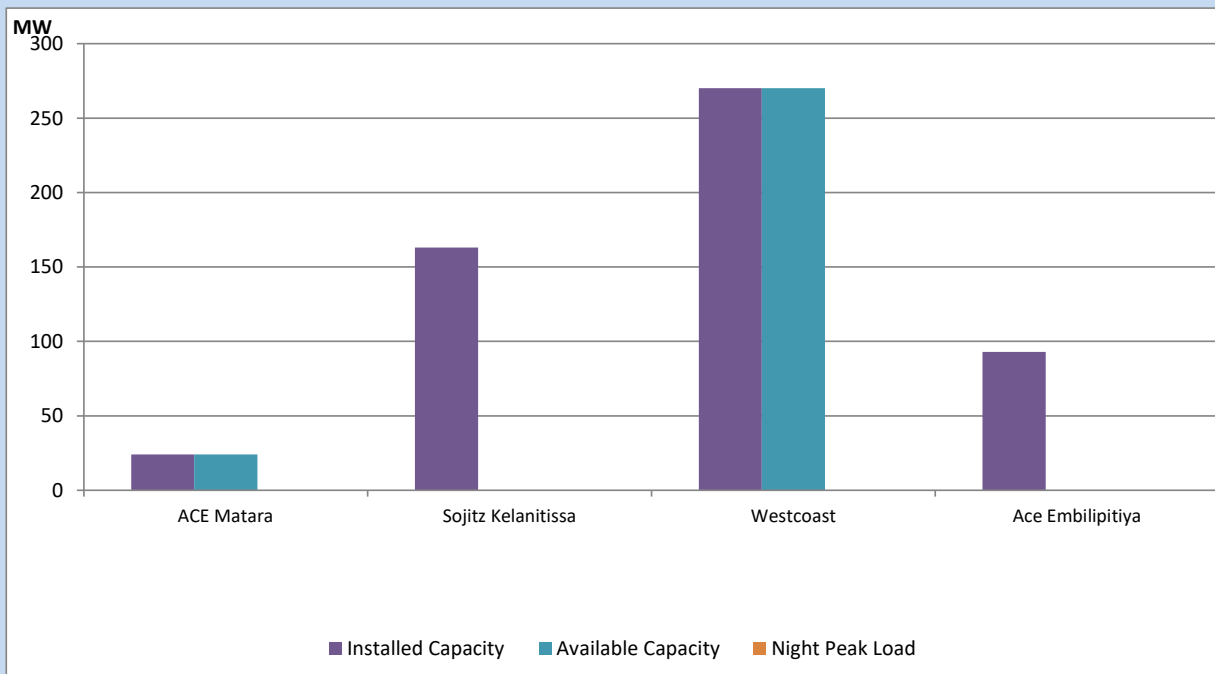
Asia Power, V Power Pallekale, Vpower Galle, V Power Horana, Vpower Hambantota, Vpower Valachchena and Altaqa Mahiyanganaya are not available due to expiration of PPAs



Available Generation is estimated based on plant availability at 6.00am on

October 7, 2022

## IPP owned Thermal Plant Loading at the Night Peak

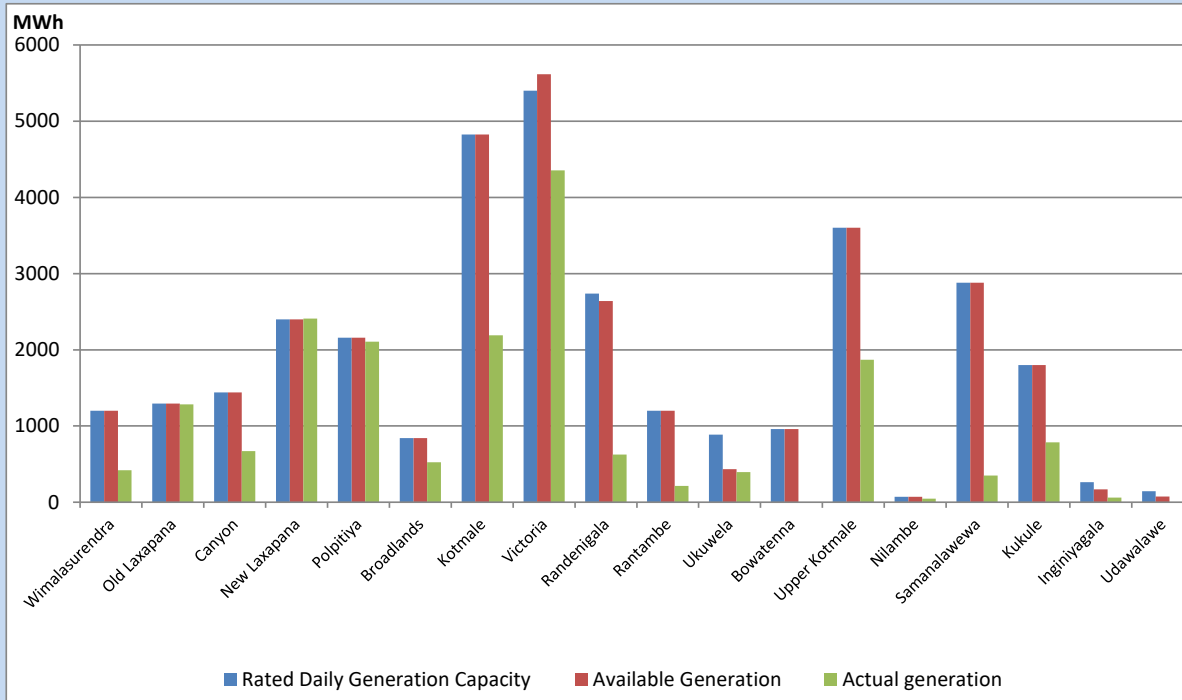


Note- Plant availability is recorded at 6.00 am on

October 7, 2022

## Major Hydro Plant Dispatch

October 6, 2022

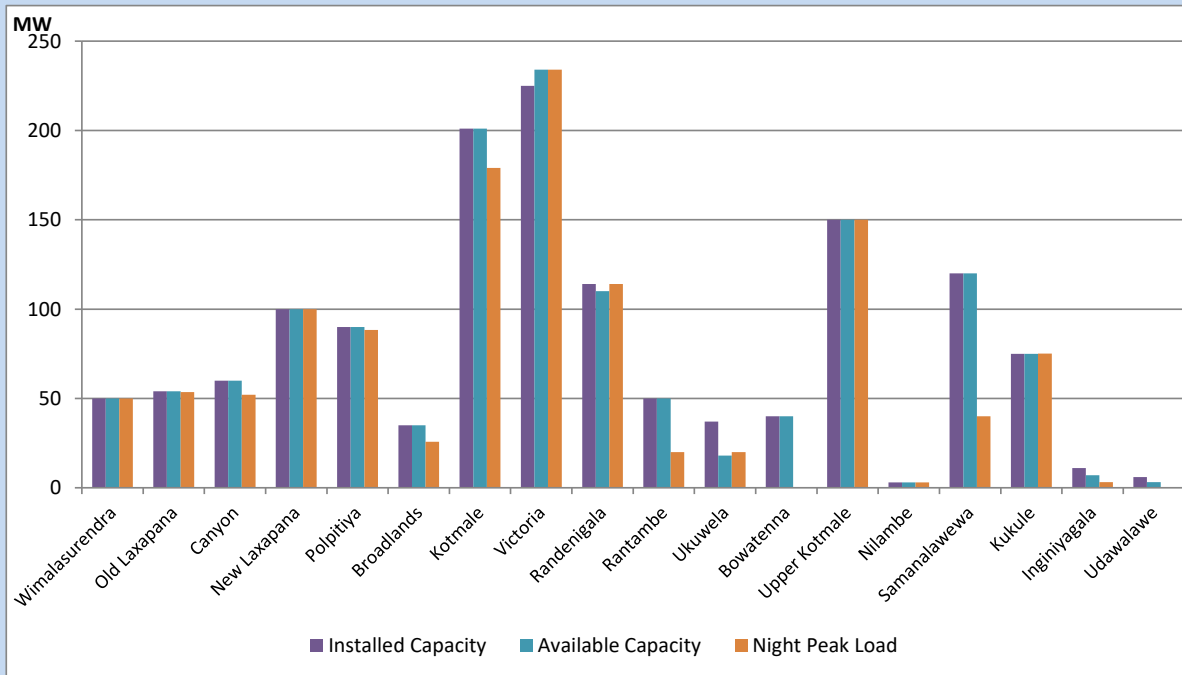


Available Generation is estimated based on plant availability at 6.00am on  
Broadlands power plant is operating in the Commissioning Stage

October 7, 2022

## Major Hydro Plant Loading at Night Peak

October 6, 2022



Note- Plant availability is recorded at 6.00 am on  
Broadlands power plant is operating in the Commissioning Stage

October 7, 2022

## Summary of Major Plant performance

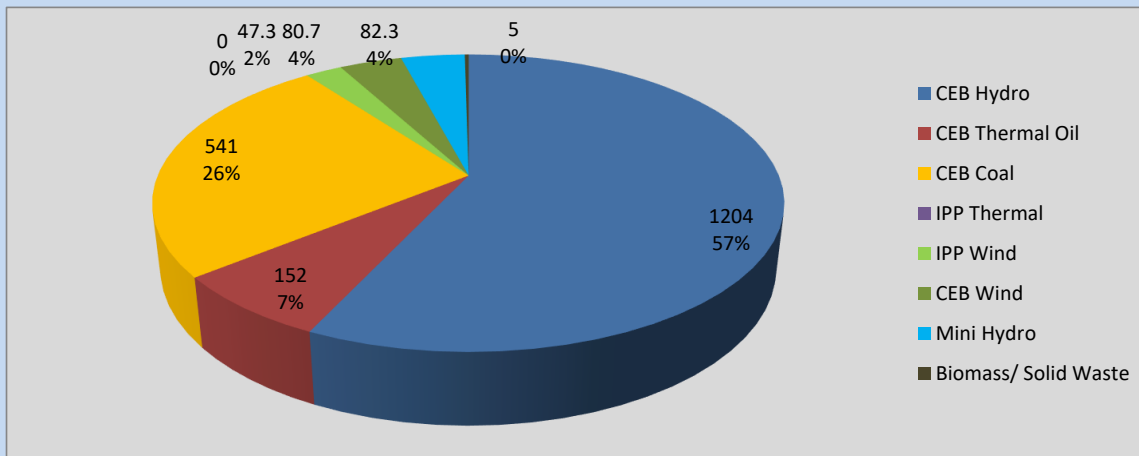
Plant	Installed Capacity	Plant Availability	Night peak Load	Plant Dispatch
	(MW)	(MW)	(MW)	(MWh)
Wimalasurendra	50	50	50	420
Old Laxapana	54	54	54	1,285
Canyon	60	60	52	670
New Laxapana	100	100	100	2,410
Polpitiya	90	90	88	2,107
Broadlands	35	35	26	525
Kotmale	201	201	179	2,190
Victoria	225	234	234	4,353
Randenigala	114	110	114	625
Rantambe	50	50	20	213
Ukuwela	37	18	20	395
Bowatenna	40	40	0	0
Upper Kotmale	150	150	150	1,868
Nilambe	3	3	3	47
Samanalawewa	120	120	40	350
Kukule	75	75	75	784
Inginiyagala	11	7	3	62
Udawalawe	6	3	0	0
Puttalam Coal I	270	270	271	6,467
Puttalam Coal II	270	0	0	0
Puttalam Coal III	270	270	270	6,470
KPS Small GTs	64	16	0	0
KPS GT 7	115	115	0	0
KCCP	161	155	152	3,248
Sapugaskanda A	70	36	0	0
Sapugaskanda B	70	45	0	0
Uthura Janani	26	0	0	0
Barge CEB	60	60	0	21
CEB-Thulhiriya	10	0	0	0
CEB-Kolonnawa	20	2	0	0
CEB-Mathugama	20	11	0	0
ACE Matara	24	24	0	0
Sojitz Kelanitissa	163	0	0	0
West Coast	270	270	0	0
ACE Embilipitiya	93	0	0	0
<b>Total</b>	<b>3,397</b>	<b>2,673</b>	<b>2,116</b>	<b>40,396</b>

Plant availability is the availability recorded at 6 am on

October 7, 2022

## Contribution to the Night Peak in MW

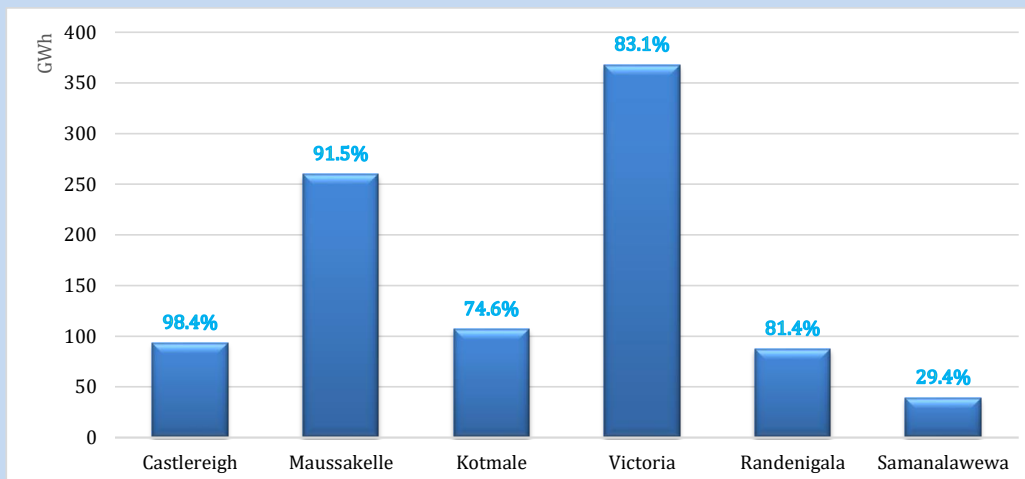
October 6, 2022



Night Peak*	2,112.1 MW
Day Peak	1,927.0 MW
Minimum Demand	1,214.9 MW

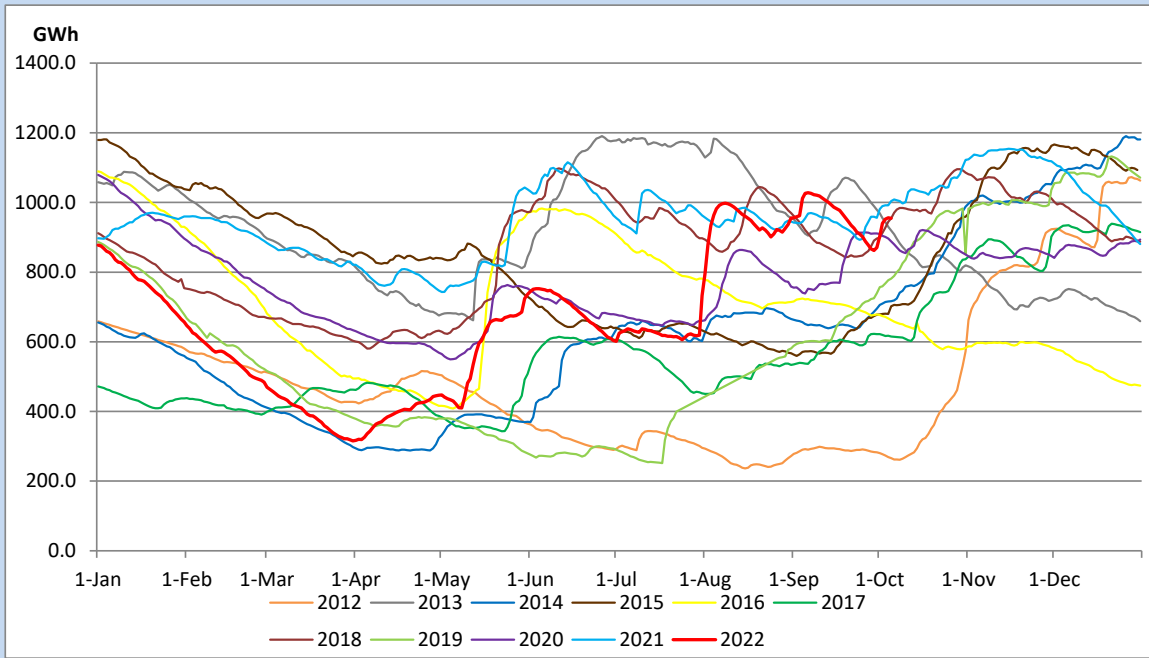
Above figures are excluding contribution from Roof Top Solar, 1MW solar, certain Wind plants and Mini Hydro plants

## Reservoir Levels - as at 06.00 Hr on October 7, 2022

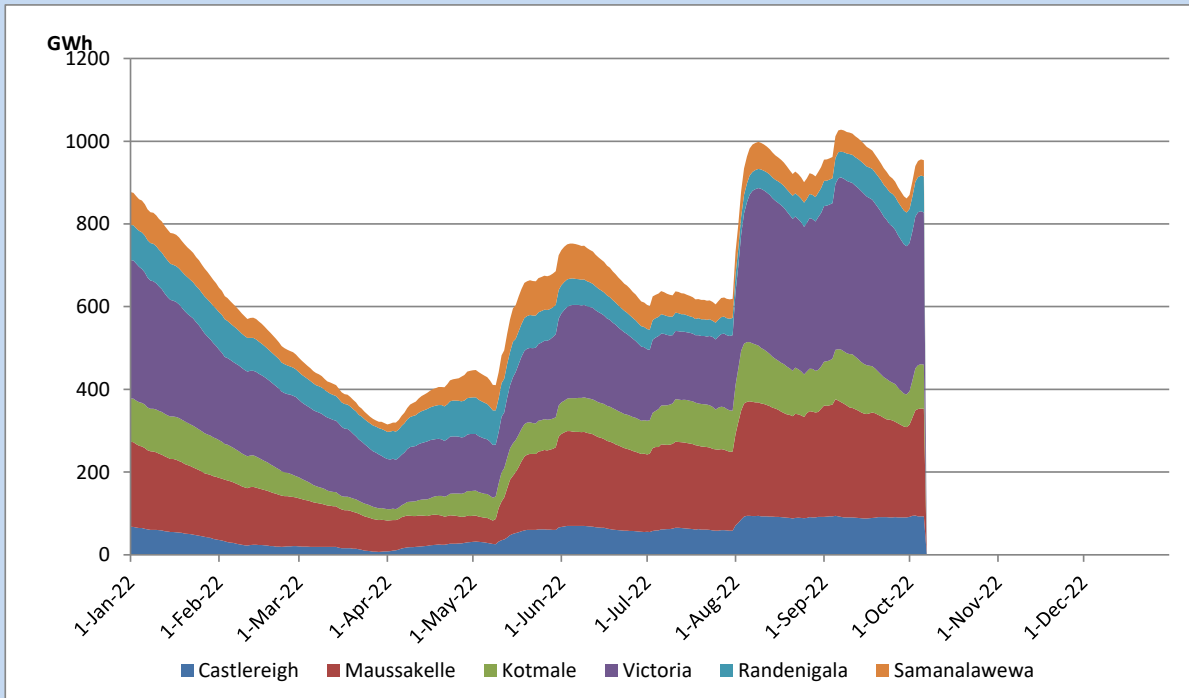


Total Reservoir Level	954.4 GWh
% of Total capacity	79.2%

## Comparison of Total Reservoir Storage Levels with Past Years

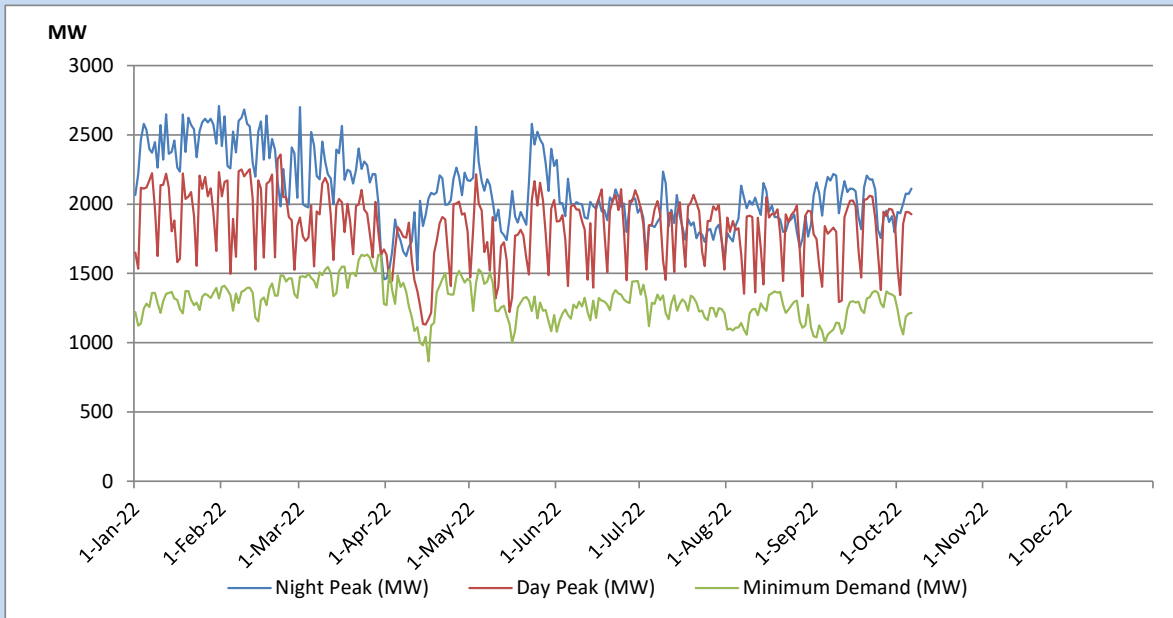


## Variation of Major Hydro Reservoir Levels in the current year (GWh)





## Variation of Demand during the current year

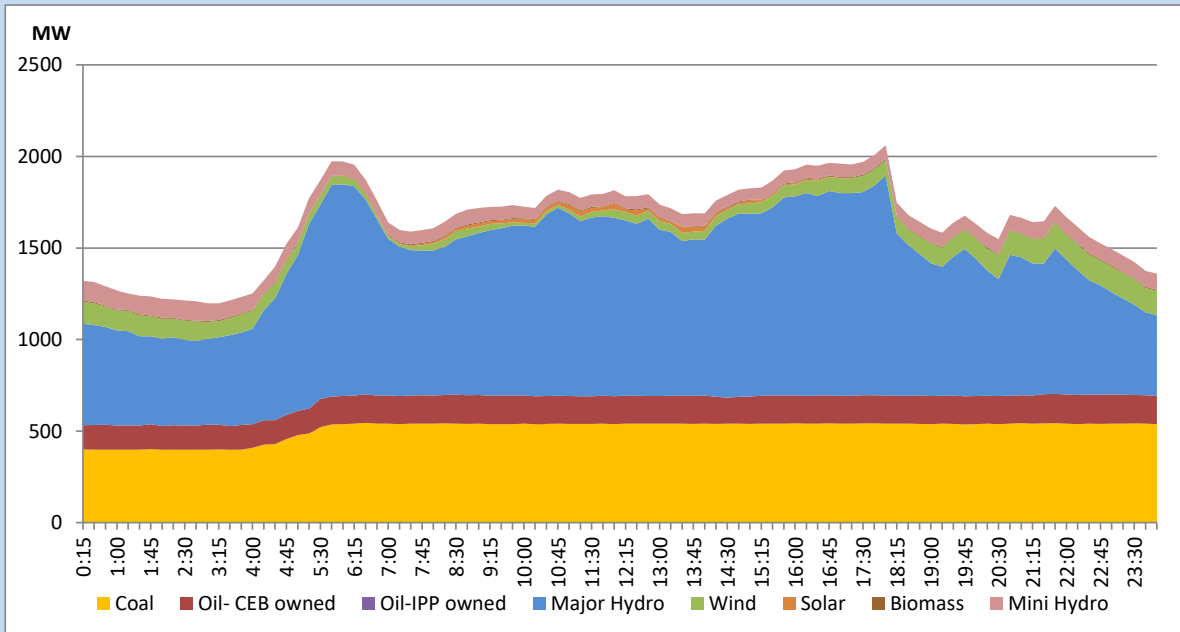


The above figures are excluding contribution from Roof Top Solar, 1MW solar, certain Wind plants and Mini Hydro plants

## Daily Load Curve of the Previous day

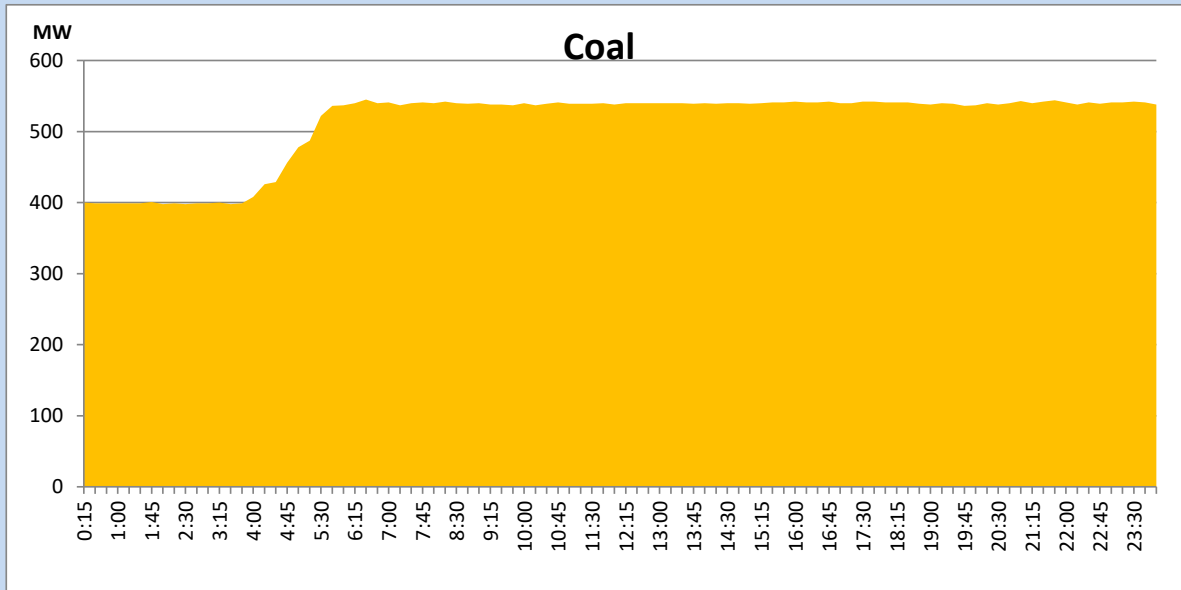
October 5, 2022

Solar and wind data is based on Telemetered Power Stations only



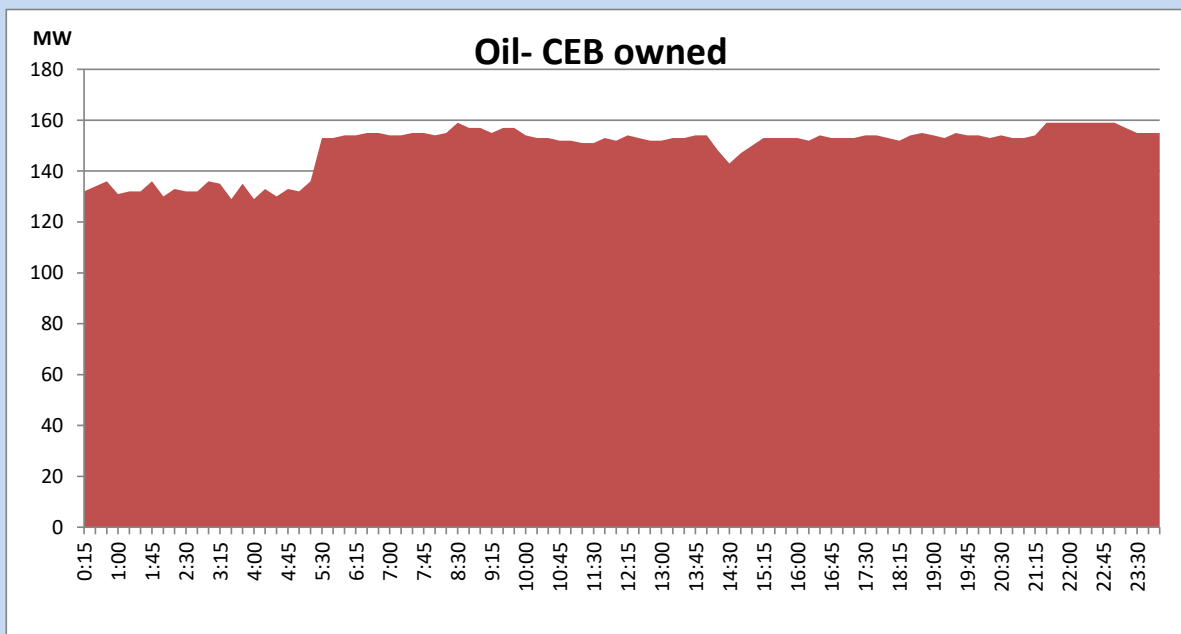
## Coal Generation during the Previous day

October 5, 2022



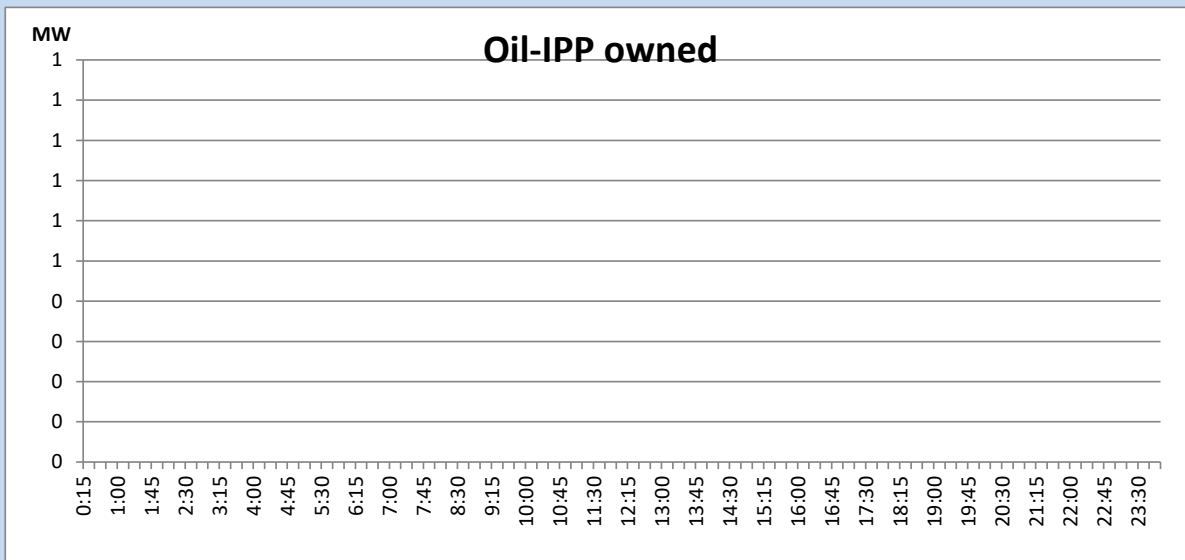
## CEB Oil Plant Generation during the Previous day

October 5, 2022



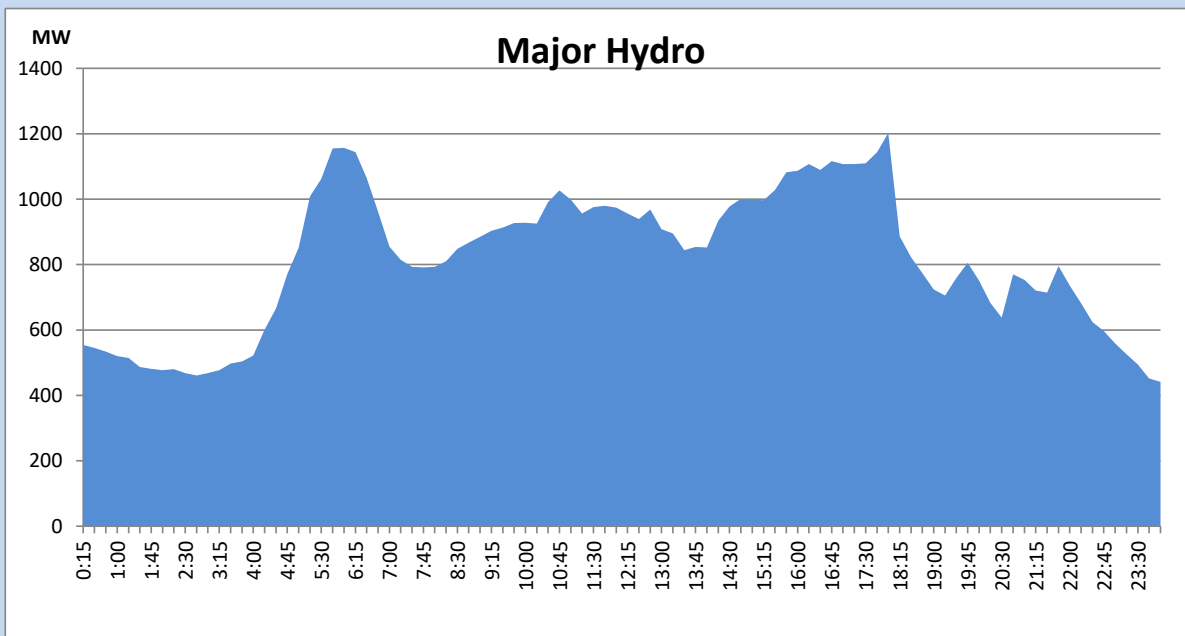
## IPP Oil Plant Generation during the Previous day

October 5, 2022



## Major Hydro Generation during the Previous day

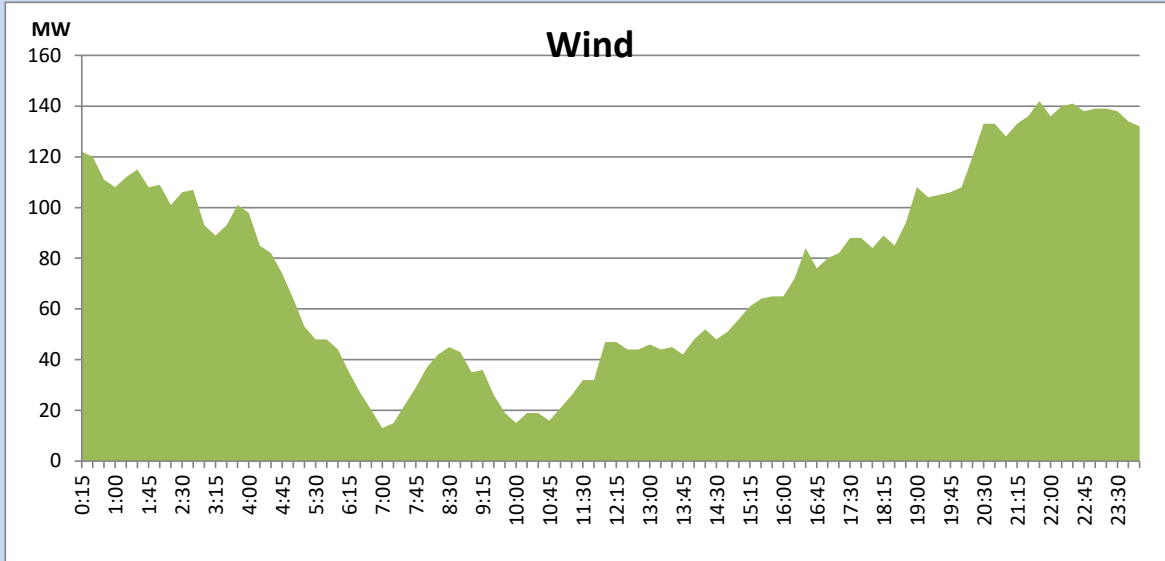
October 5, 2022



## Wind Generation during the Previous day

October 5, 2022

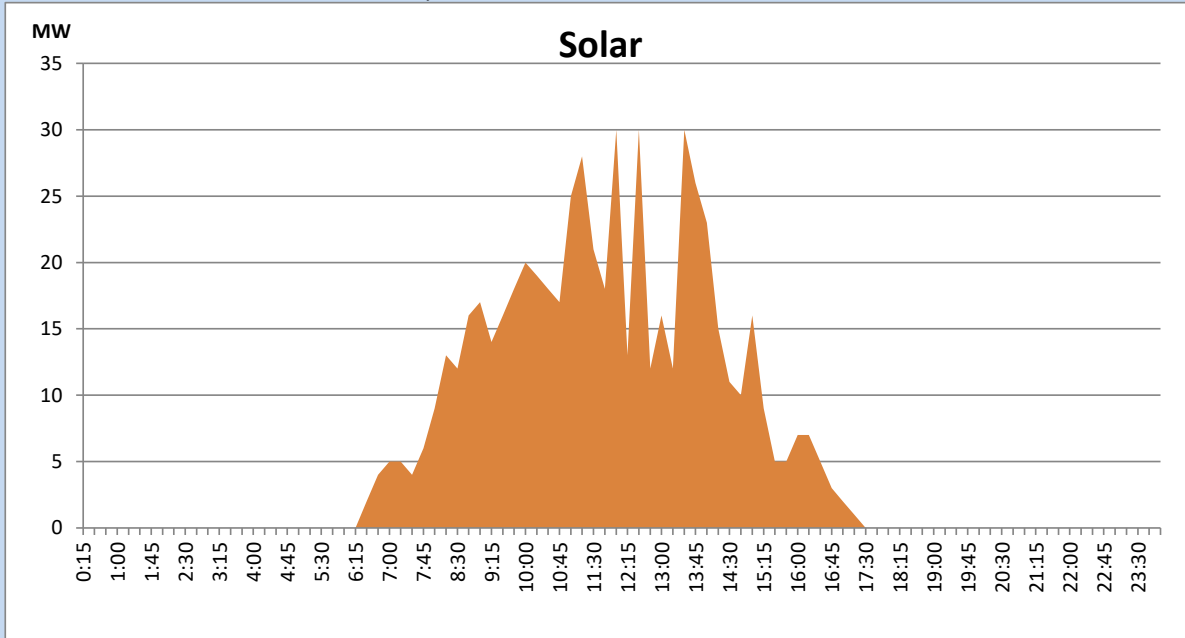
Based on Telemetered Power Stations only



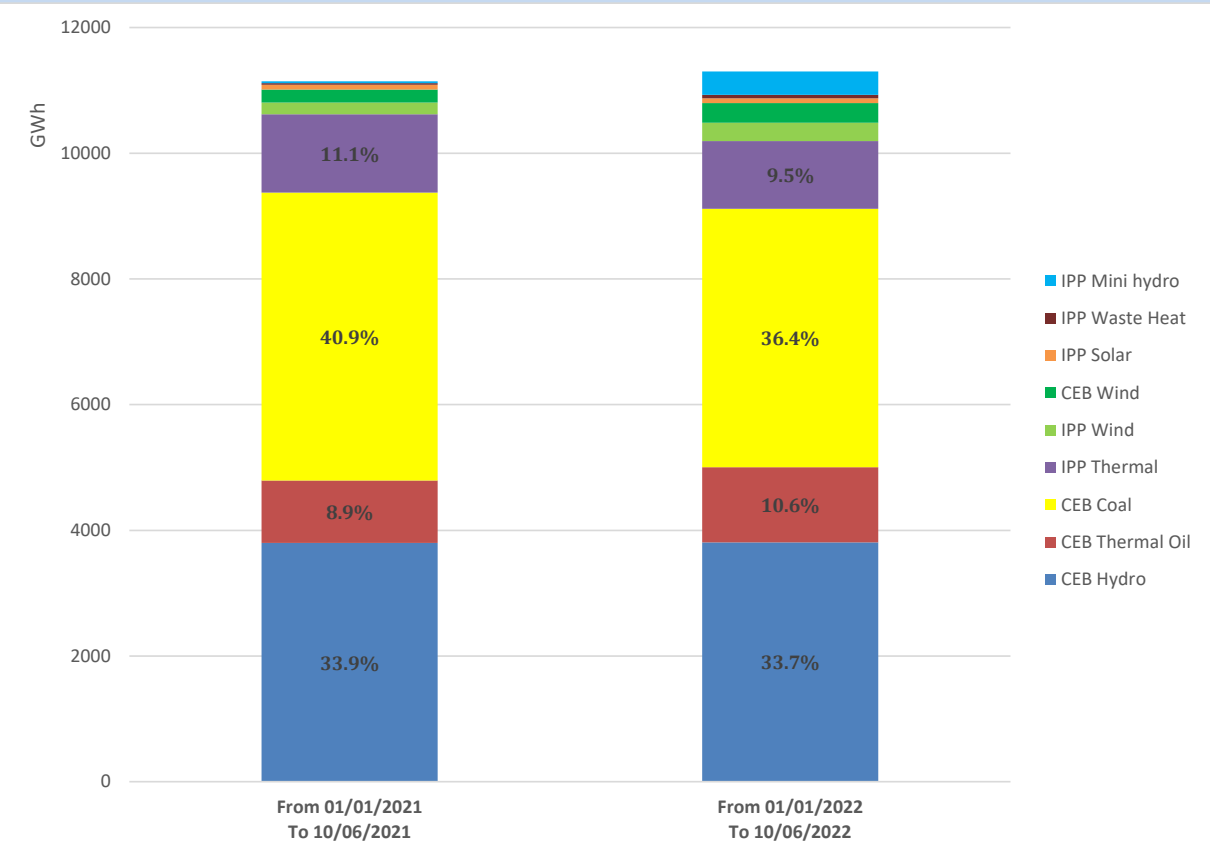
## Solar Generation during the Previous day

October 5, 2022

Based on Telemetered Power Stations only



# Cumulative Dispatch Comparison with Last Year



## Thermal Plant Fuel types

Power Station	Primary Fuel
CEB Thermal	
Sapugaskanda 1	Heavy Fuel
Sapugaskanda 2	Heavy Fuel
Kelanitissa Small Gas Turbines	Auto Diesel
GT 7 - Kelanitissa	Auto Diesel
Kelanitissa CCY	Naphtha or Diesel
Lakvijaya 1	Coal
Lakvijaya 2	Coal
Lakvijaya 3	Coal
Uthuru Janani	Heavy Fuel
Barge CEB	Heavy Fuel

Power Station	Primary Fuel
Private Thermal	
Sojitz - Kelanitissa	Auto Diesel
West Coast	Auto Diesel / Heavy Fuel
ACE Matara	Heavy Fuel
ACE Embilipitiya	Heavy Fuel

## Major Incidents during the day -as reported by CEB morning of

October 7, 2022

- 1) Rotational manual load shedding was carried out from 18:00hrs to 22:00hrs.
- 2) Laxapana pond spilling started at 03:11hrs and stopped at 05:30hrs.