

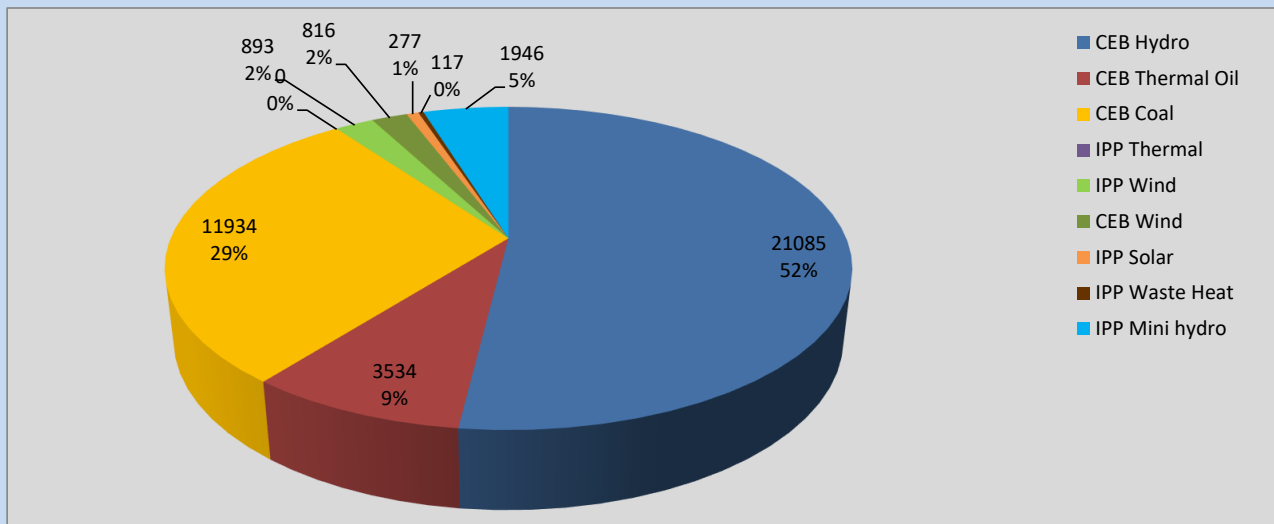
Generation and Reservoirs Statistics

October 4, 2022



PUBLIC UTILITIES COMMISSION OF SRI LANKA

Daily Generation Mix in MWh



Total Generation **40,602 MWh**

Note: Above data is excluding contribution from Roof Top Solar, 1MW Solar and certain Mini Hydro plants

Cumulative Dispatch

Note: Following data is Excluding contribution from Roof Top Solar, 1MW solar and Mini Hydro plants

For Current Month

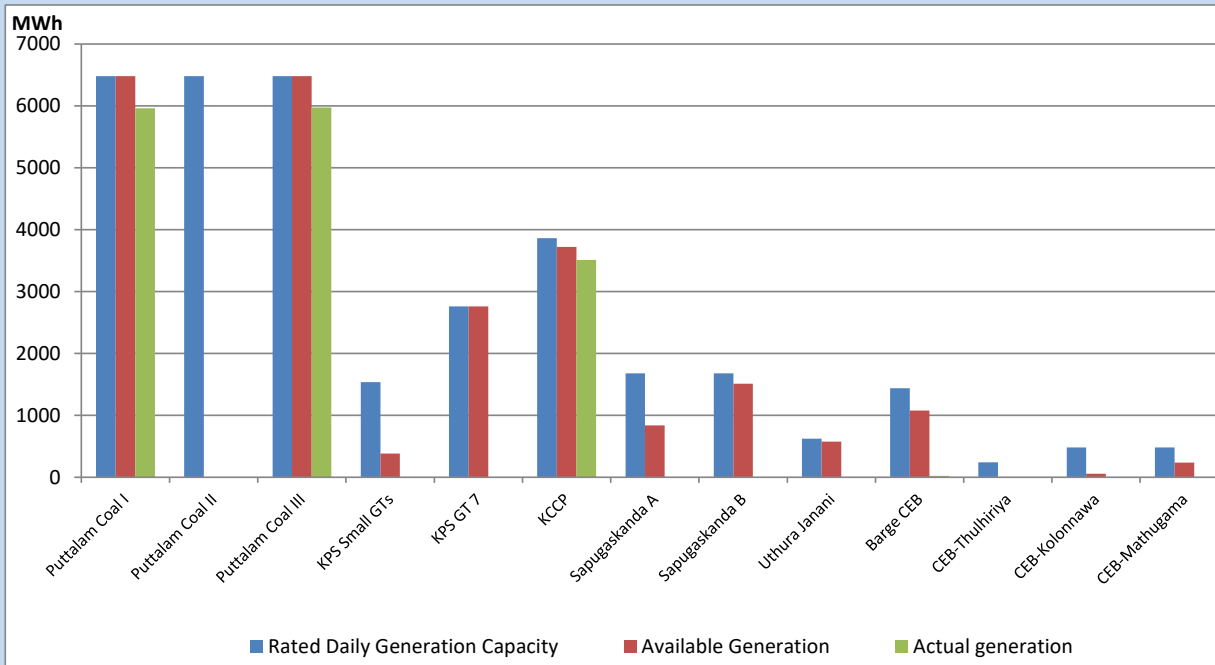
Category	Dispatch (GWh)	Percentage
CEB Hydro	69.22	46.11%
CEB Thermal Oil	11.91	7.93%
CEB Coal	44.80	29.84%
IPP Thermal	0.92	0.61%
SPP Wind	7.25	4.83%
CEB Wind	5.81	3.87%
SPP Solar	1.10	0.73%
SPP Solid Waste	0.68	0.45%
Mini Hydro	8.42	5.61%
Total	150.11	

For Current Year

Category	Dispatch (GWh)	Percentage
CEB Hydro	3,769.4	33.60%
CEB Thermal Oil	1,190.6	10.61%
CEB Coal	4,086.0	36.42%
IPP Thermal	1,076.7	9.60%
SPP Wind	288.2	2.57%
CEB Wind	311.9	2.78%
SPP Solar	72.5	0.65%
SPP Solid Waste	55.5	0.50%
Mini Hydro	369.0	3.29%
Total	11,219.4	

CEB owned Thermal Plant Dispatch

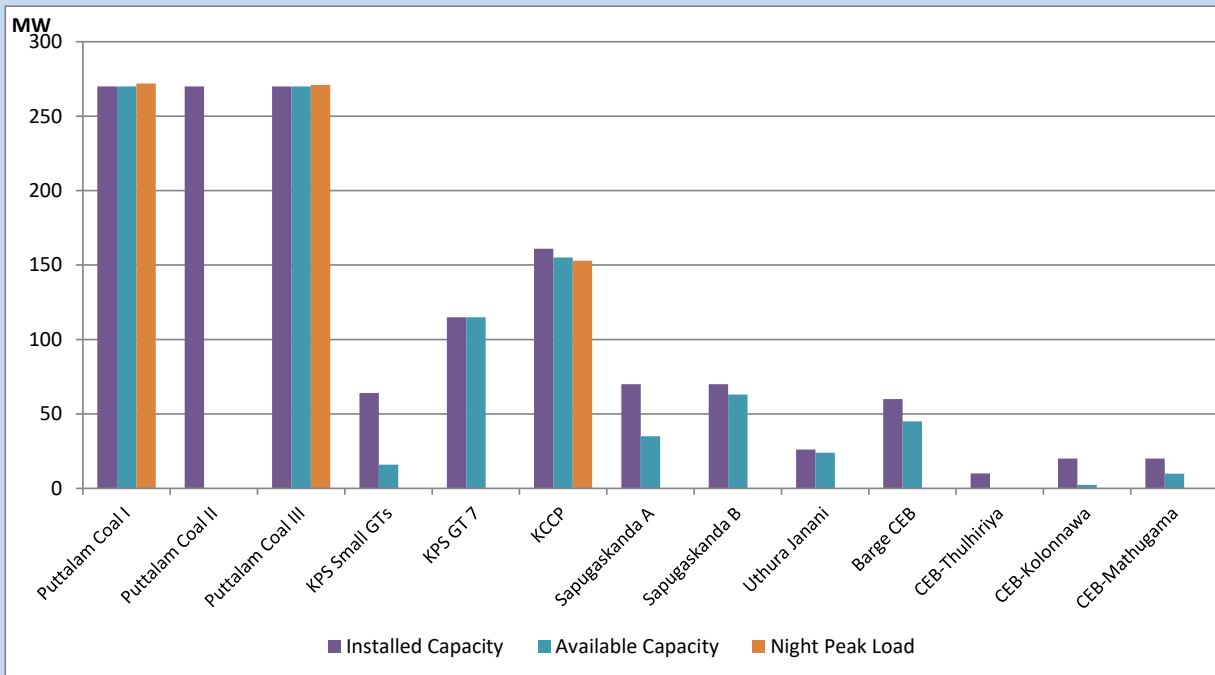
October 4, 2022



Available Generation is estimated based on plant availability at 6.00am on

October 5, 2022

CEB owned Thermal Plant Loading at the Night Peak



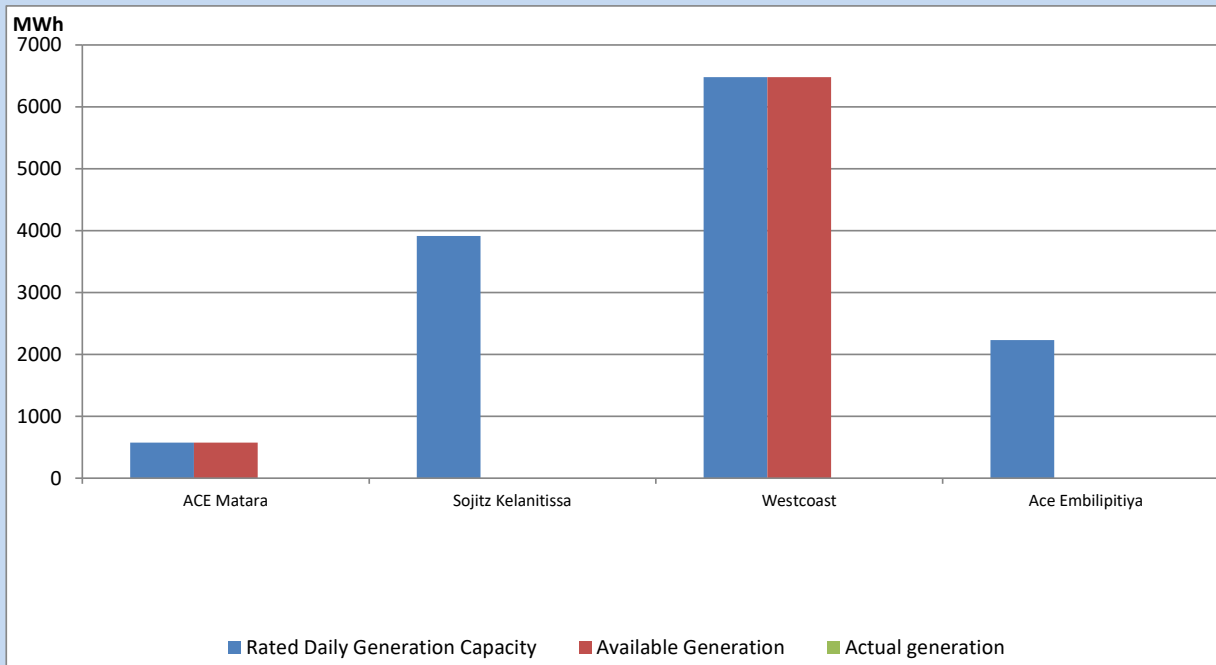
Note- Plant availability is recorded at 6.00 am on

October 5, 2022

IPP owned Thermal Plant Dispatch

October 4, 2022

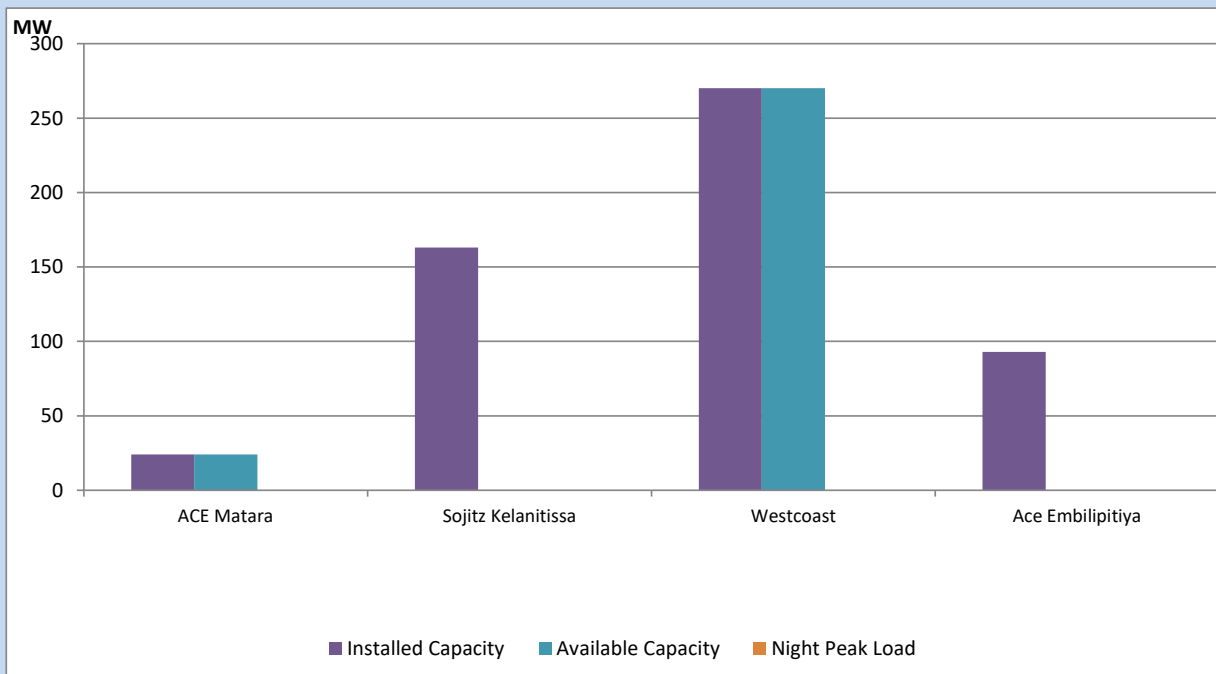
Asia Power, V Power Pallekale, Vpower Galle, V Power Horana, Vpower Hambantota, Vpower Valachchena and Altaqa Mahiyanganaya are not available due to expiration of PPAs



Available Generation is estimated based on plant availability at 6.00am on

October 5, 2022

IPP owned Thermal Plant Loading at the Night Peak

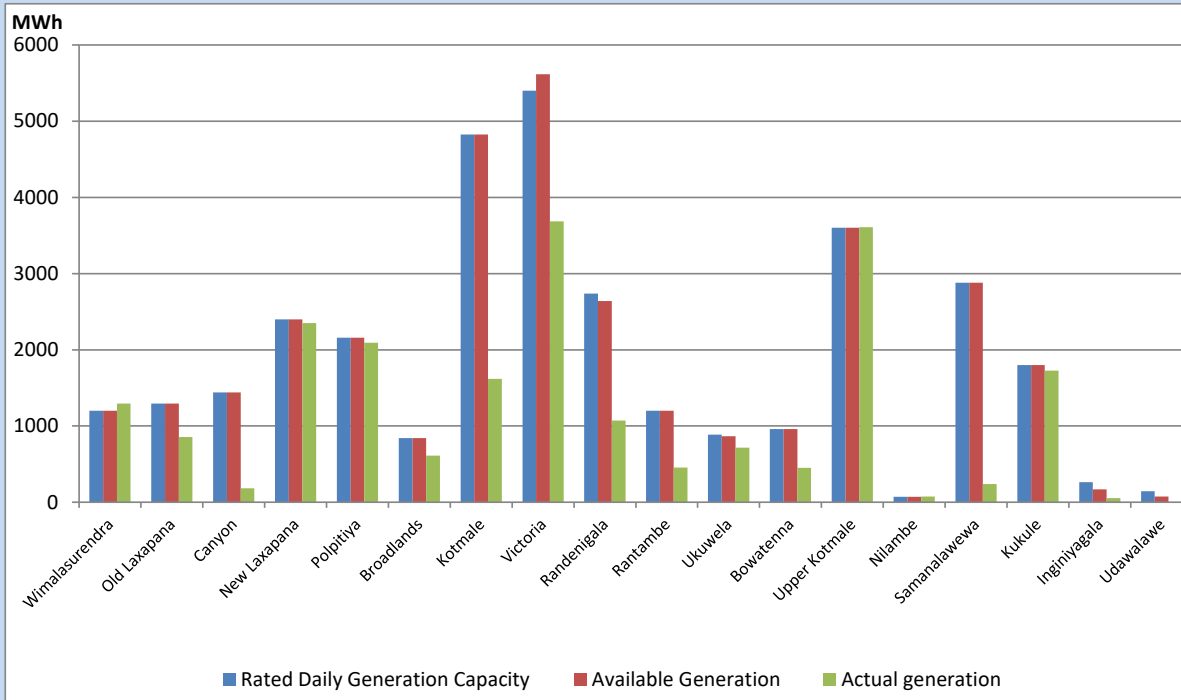


Note- Plant availability is recorded at 6.00 am on

October 5, 2022

Major Hydro Plant Dispatch

October 4, 2022

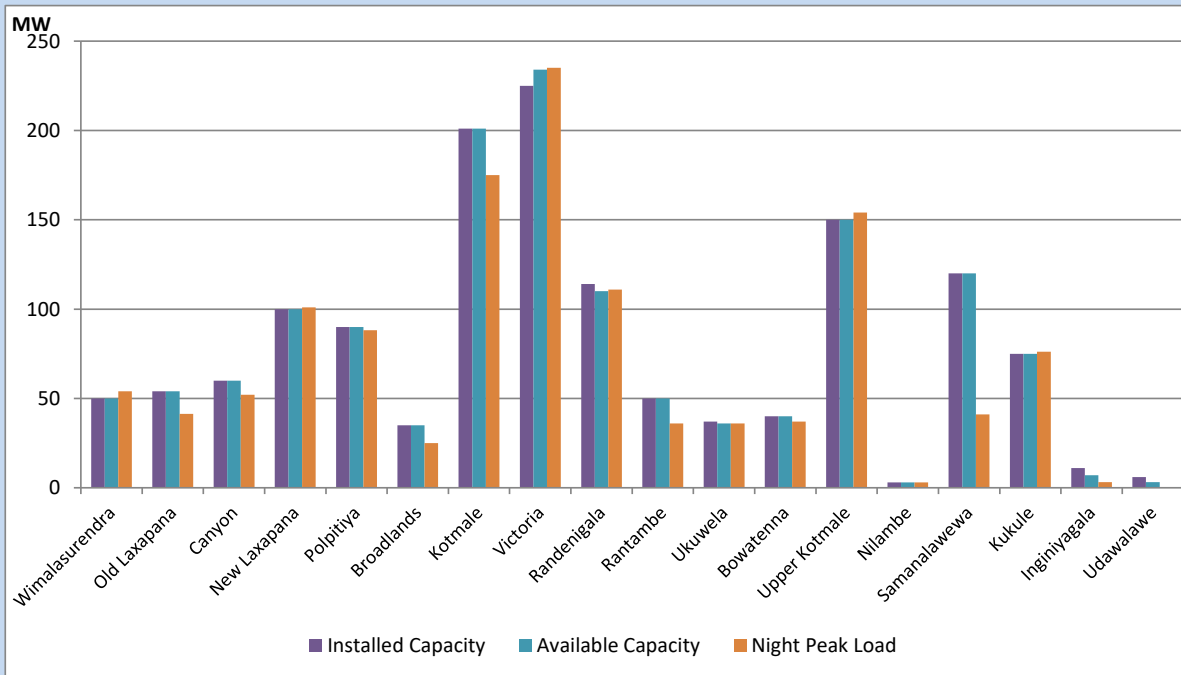


Available Generation is estimated based on plant availability at 6.00am on
Broadlands power plant is operating in the Commissioning Stage

October 5, 2022

Major Hydro Plant Loading at Night Peak

October 4, 2022



Note- Plant availability is recorded at 6.00 am on
Broadlands power plant is operating in the Commissioning Stage

October 5, 2022

Summary of Major Plant performance

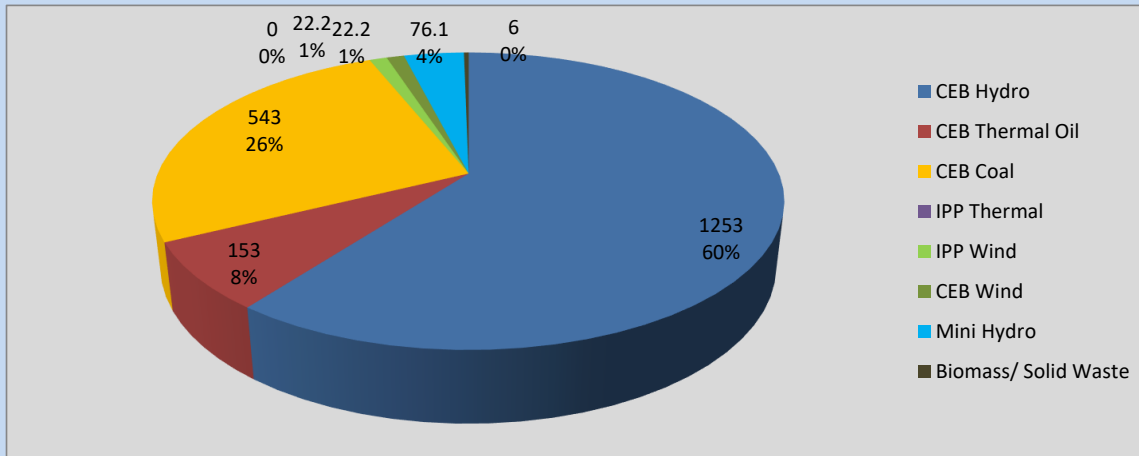
Plant	Installed Capacity	Plant Availability	Night peak Load	Plant Dispatch
	(MW)	(MW)	(MW)	(MWh)
Wimalasurendra	50	50	54	1,293
Old Laxapana	54	54	41	855
Canyon	60	60	52	183
New Laxapana	100	100	101	2,349
Polpitiya	90	90	88	2,094
Broadlands	35	35	25	610
Kotmale	201	201	175	1,620
Victoria	225	234	235	3,685
Randenigala	114	110	111	1,073
Rantambe	50	50	36	456
Ukuwela	37	36	36	716
Bowatenna	40	40	37	451
Upper Kotmale	150	150	154	3,609
Nilambe	3	3	3	75
Samanalawewa	120	120	41	237
Kukule	75	75	76	1,725
Inginiyagala	11	7	3	54
Udawalawe	6	3	0	0
Puttalam Coal I	270	270	272	5,960
Puttalam Coal II	270	0	0	0
Puttalam Coal III	270	270	271	5,974
KPS Small GTs	64	16	0	0
KPS GT 7	115	115	0	0
KCCP	161	155	153	3,511
Sapugaskanda A	70	35	0	0
Sapugaskanda B	70	63	0	0
Uthura Janani	26	24	0	0
Barge CEB	60	45	0	23
CEB-Thulhiriya	10	0	0	0
CEB-Kolonnawa	20	2	0	0
CEB-Mathugama	20	10	0	0
ACE Matara	24	24	0	0
Sojitz Kelanitissa	163	0	0	0
West Coast	270	270	0	0
ACE Embilipitiya	93	0	0	0
Total	3,397	2,717	2,092	40,602

Plant availability is the availability recorded at 6 am on

October 5, 2022

Contribution to the Night Peak in MW

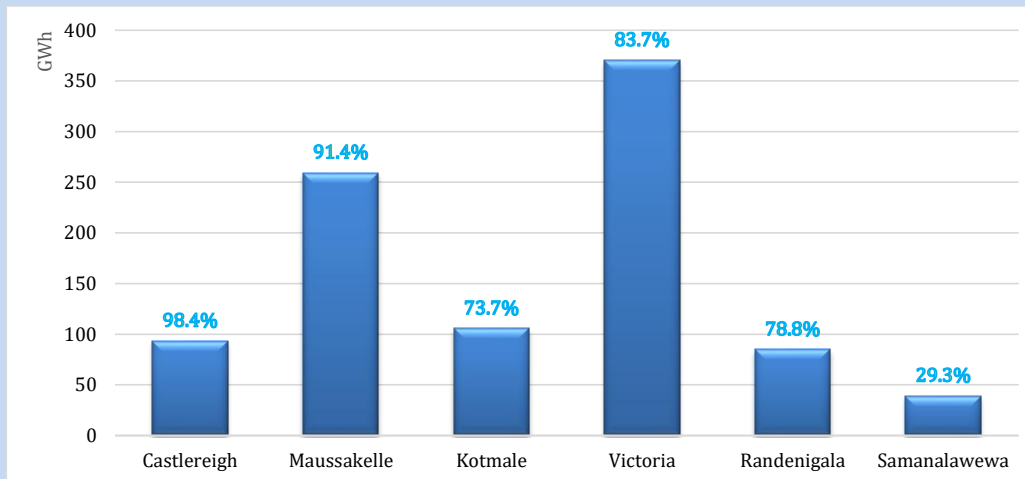
October 4, 2022



Night Peak*	2,075.5 MW
Day Peak	1,944.1 MW
Minimum Demand	1,187.4 MW

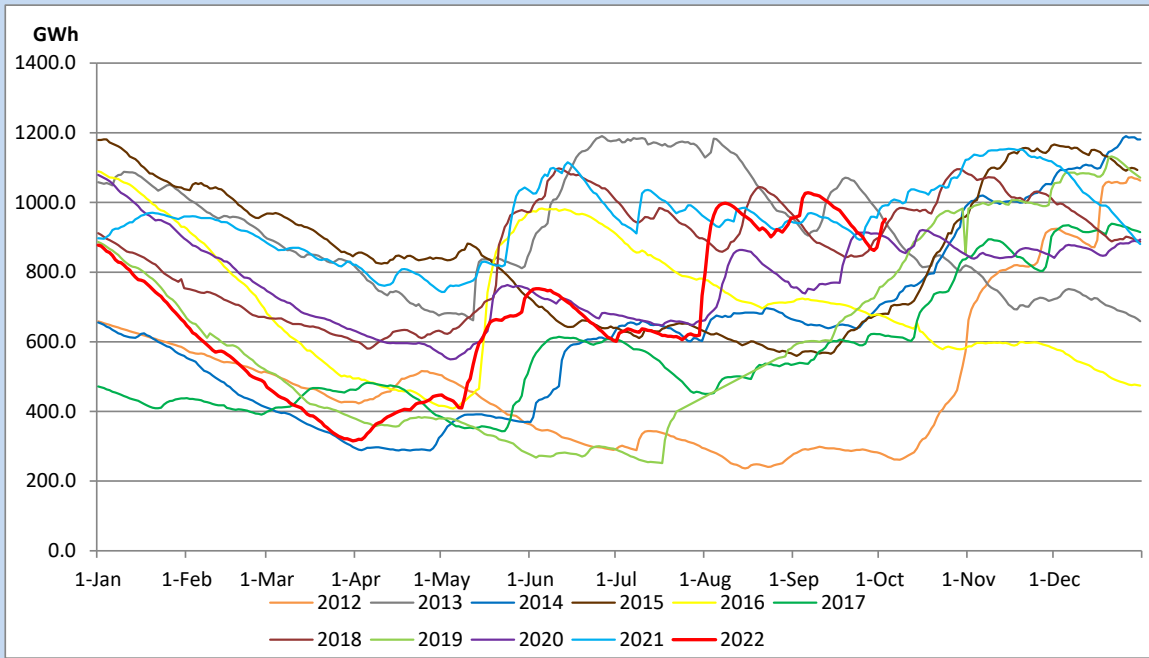
Above figures are excluding contribution from Roof Top Solar, 1MW solar, certain Wind plants and Mini Hydro plants

Reservoir Levels - as at 06.00 Hr on October 5, 2022

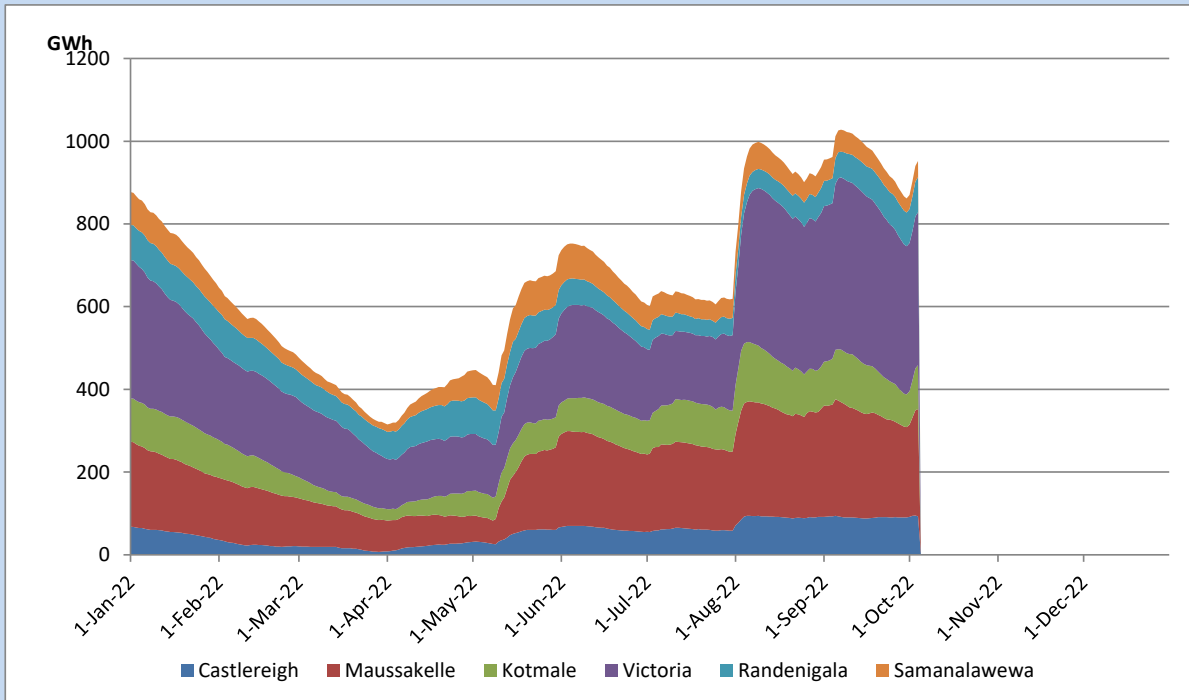


Total Reservoir Level	952.4 GWh
% of Total capacity	79.0%

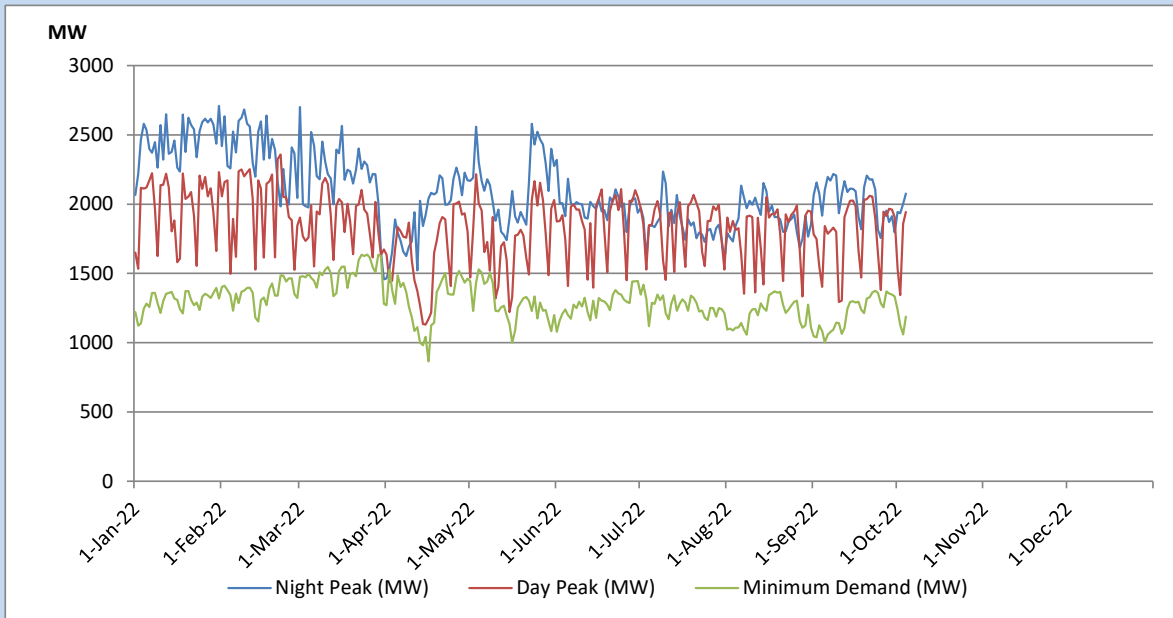
Comparison of Total Reservoir Storage Levels with Past Years



Variation of Major Hydro Reservoir Levels in the current year (GWh)



Variation of Demand during the current year

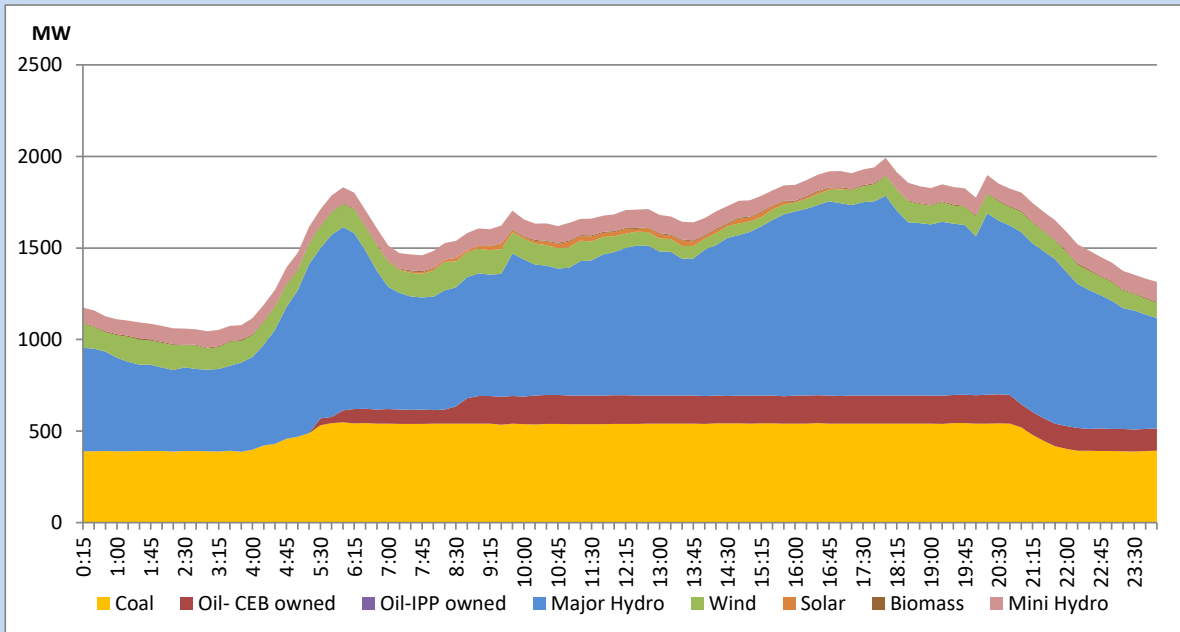


The above figures are excluding contribution from Roof Top Solar, 1MW solar, certain Wind plants and Mini Hydro plants

Daily Load Curve of the Previous day

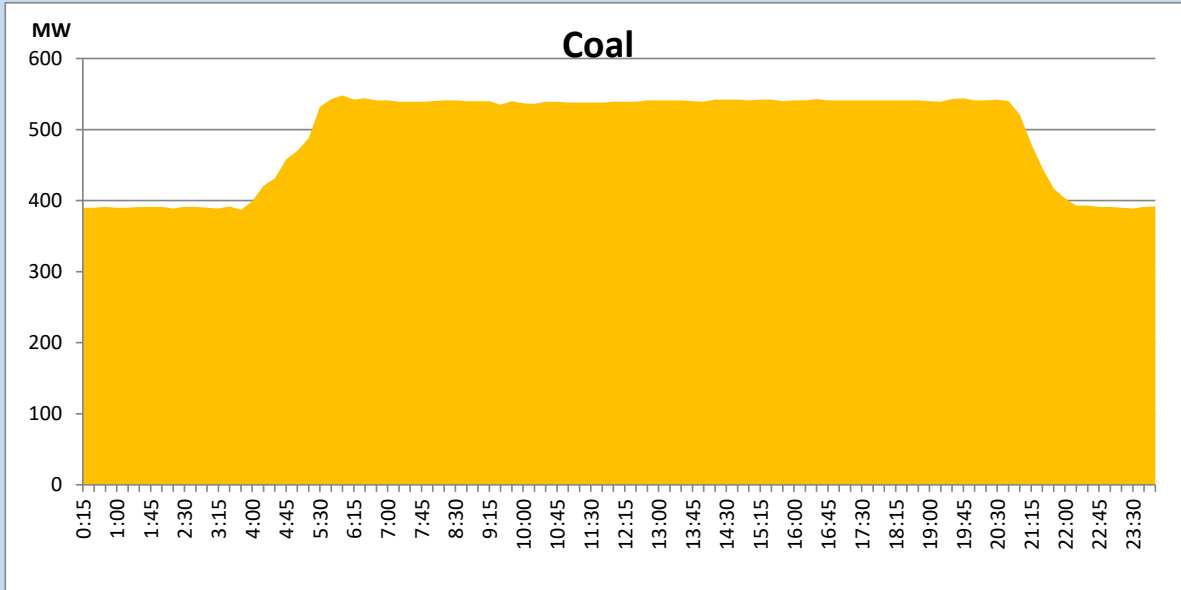
October 3, 2022

Solar and wind data is based on Telemetered Power Stations only



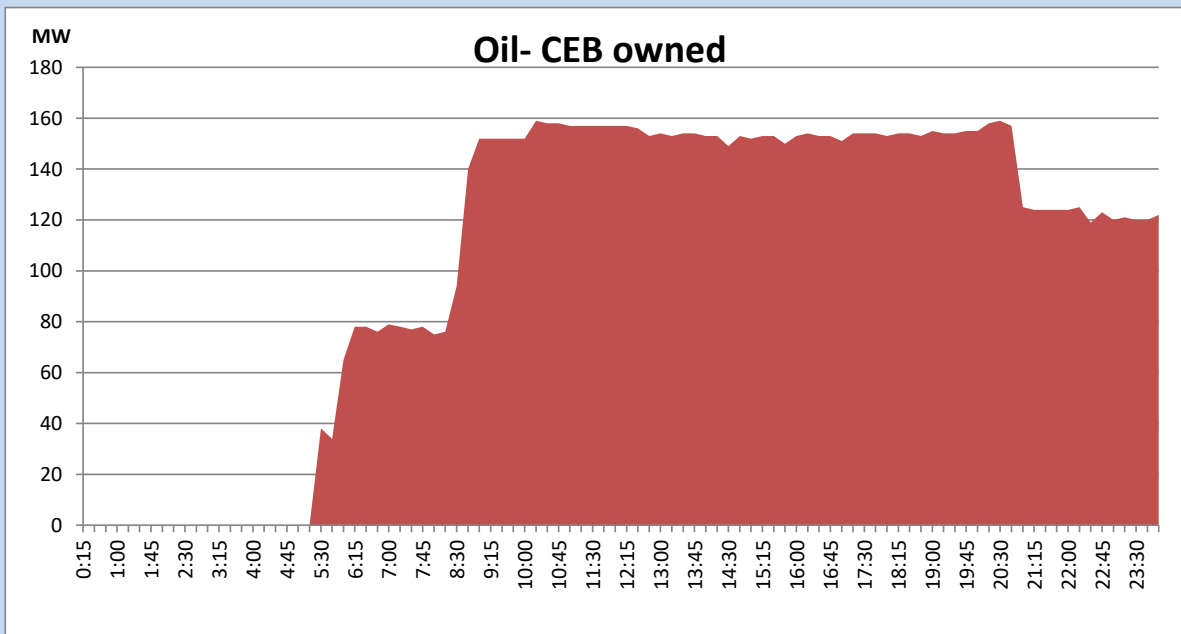
Coal Generation during the Previous day

October 3, 2022



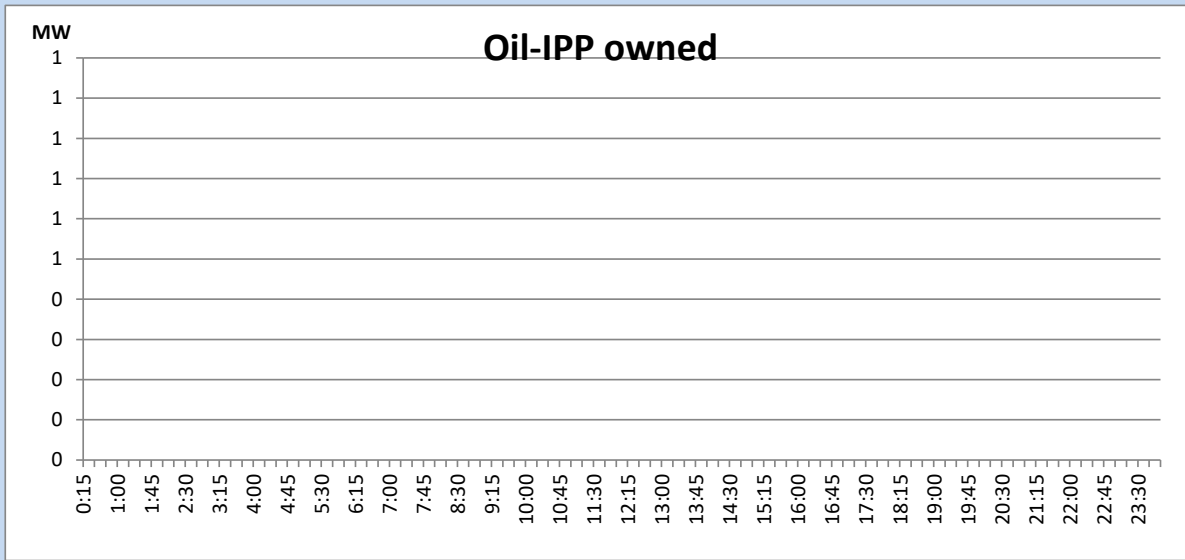
CEB Oil Plant Generation during the Previous day

October 3, 2022



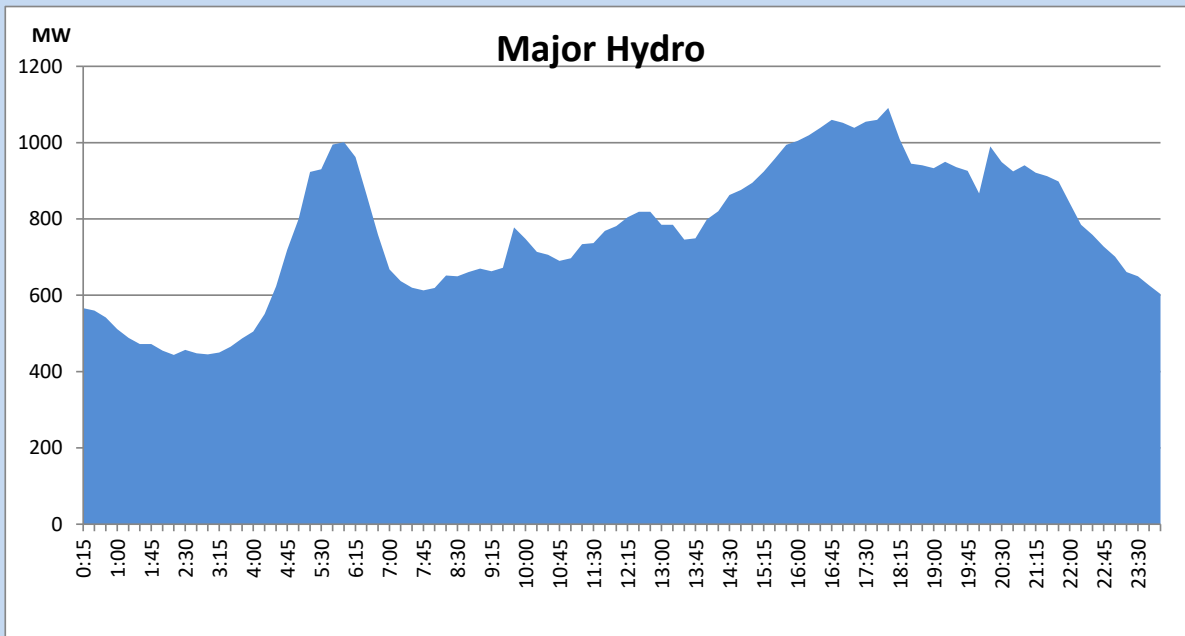
IPP Oil Plant Generation during the Previous day

October 3, 2022



Major Hydro Generation during the Previous day

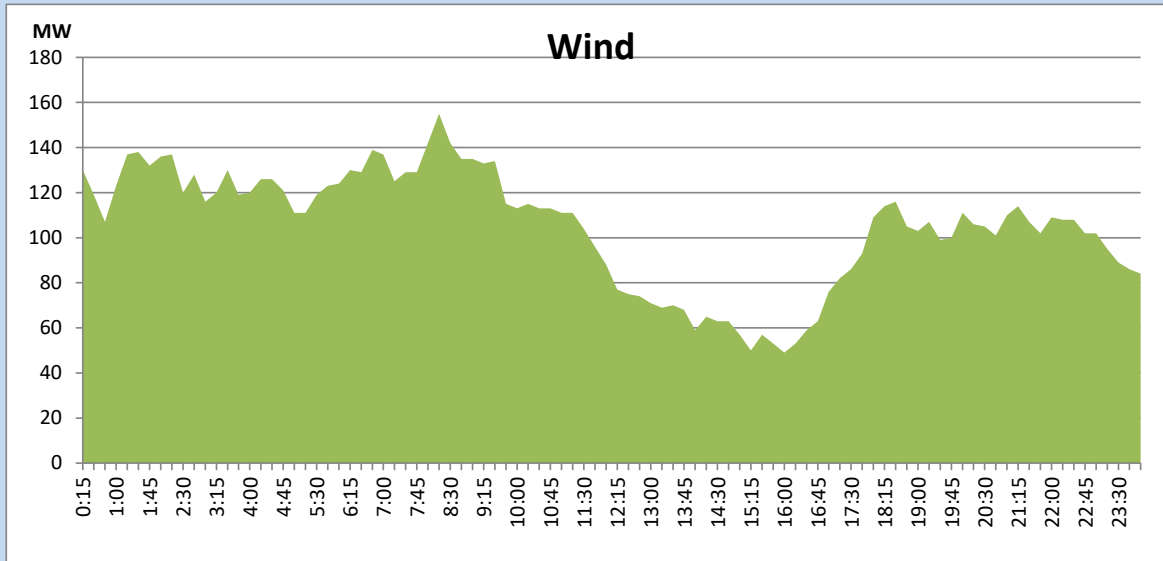
October 3, 2022



Wind Generation during the Previous day

October 3, 2022

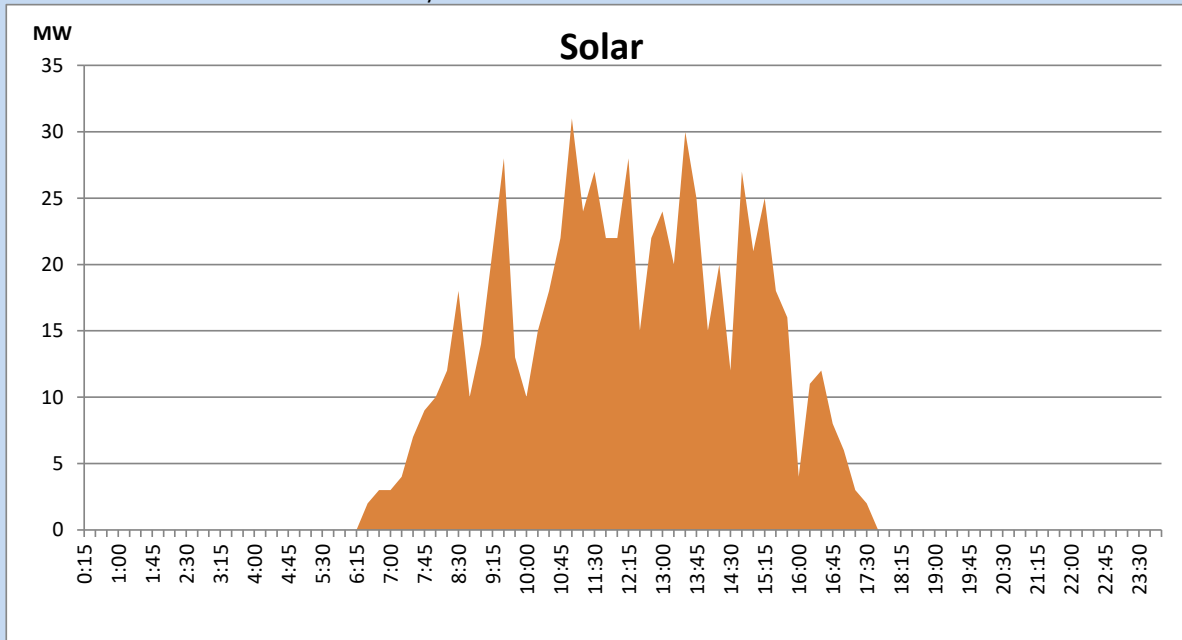
Based on Telemetered Power Stations only



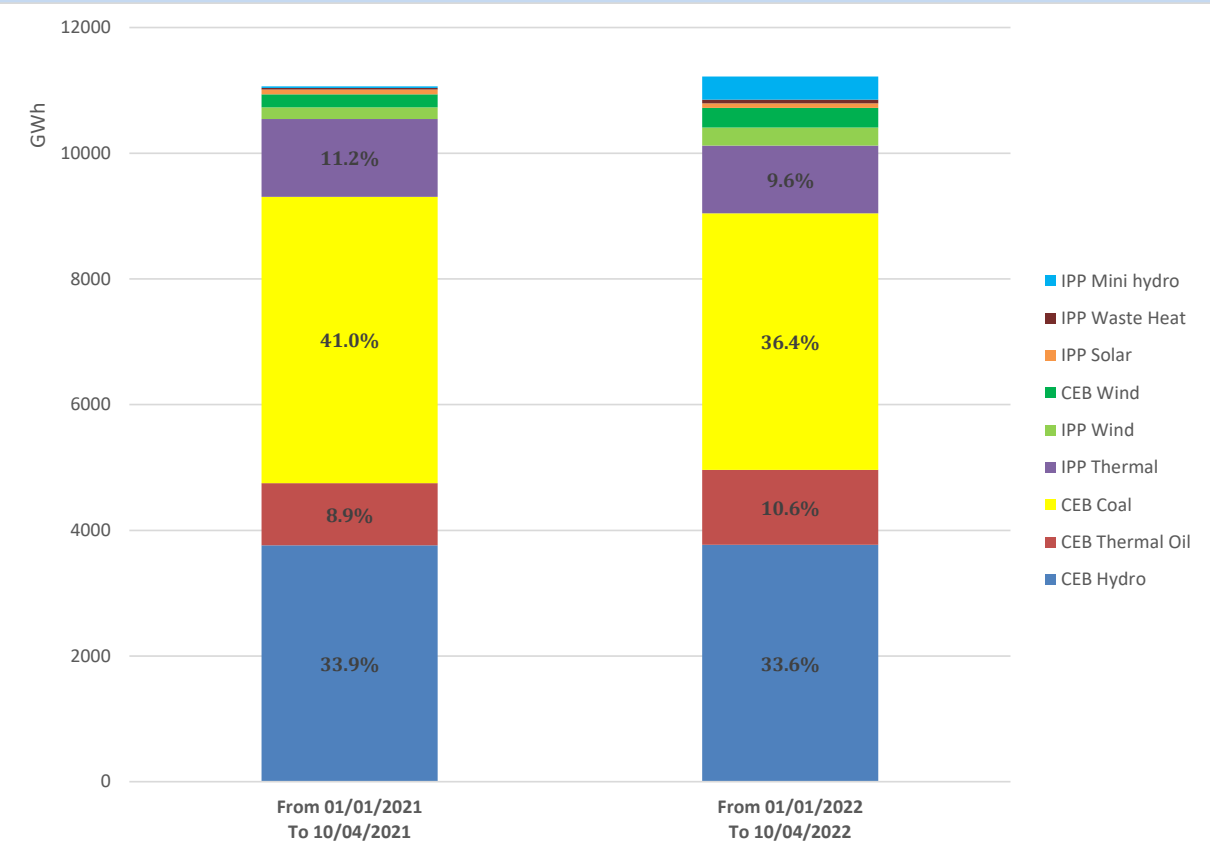
Solar Generation during the Previous day

October 3, 2022

Based on Telemetered Power Stations only



Cumulative Dispatch Comparison with Last Year



Thermal Plant Fuel types

Power Station	Primary Fuel
CEB Thermal	
Sapugaskanda 1	Heavy Fuel
Sapugaskanda 2	Heavy Fuel
Kelanitissa Small Gas Turbines	Auto Diesel
GT 7 - Kelanitissa	Auto Diesel
Kelanitissa CCY	Naphtha or Diesel
Lakvijaya 1	Coal
Lakvijaya 2	Coal
Lakvijaya 3	Coal
Uthuru Janani	Heavy Fuel
Barge CEB	Heavy Fuel

Power Station	Primary Fuel
Private Thermal	
Sojitz - Kelanitissa	Auto Diesel
West Coast	Auto Diesel / Heavy Fuel
ACE Matara	Heavy Fuel
ACE Embilipitiya	Heavy Fuel

Major Incidents during the day -as reported by CEB morning of

October 5, 2022

- 1). Rotational manual load shedding was carried out from 18:00 hrs to 20:40 hrs.
- 2). Laxapana pond spilled intermittently throughout the day.
- 3). Norton pond spilling continues to present hour.
- 4). Castlereigh reservoir spilling stopped at 09:40hrs.
- 5). Upper Kotmale spilling stopped at 15:06hrs.