

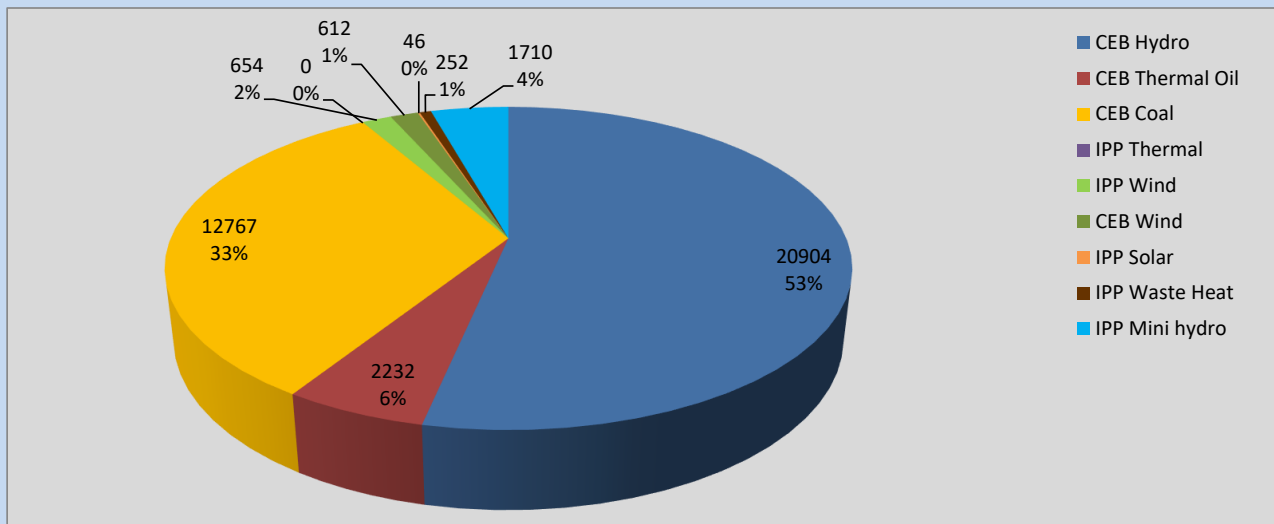
# Generation and Reservoirs Statistics

August 31, 2022



PUBLIC UTILITIES COMMISSION OF SRI LANKA

## Daily Generation Mix in MWh



**Total Generation** **39,177 MWh**

Note: Above data is excluding contribution from Roof Top Solar, 1MW Solar and certain Mini Hydro plants

## Cumulative Dispatch

Note: Following data is Excluding contribution from Roof Top Solar, 1MW solar and Mini Hydro plants

### For Current Month

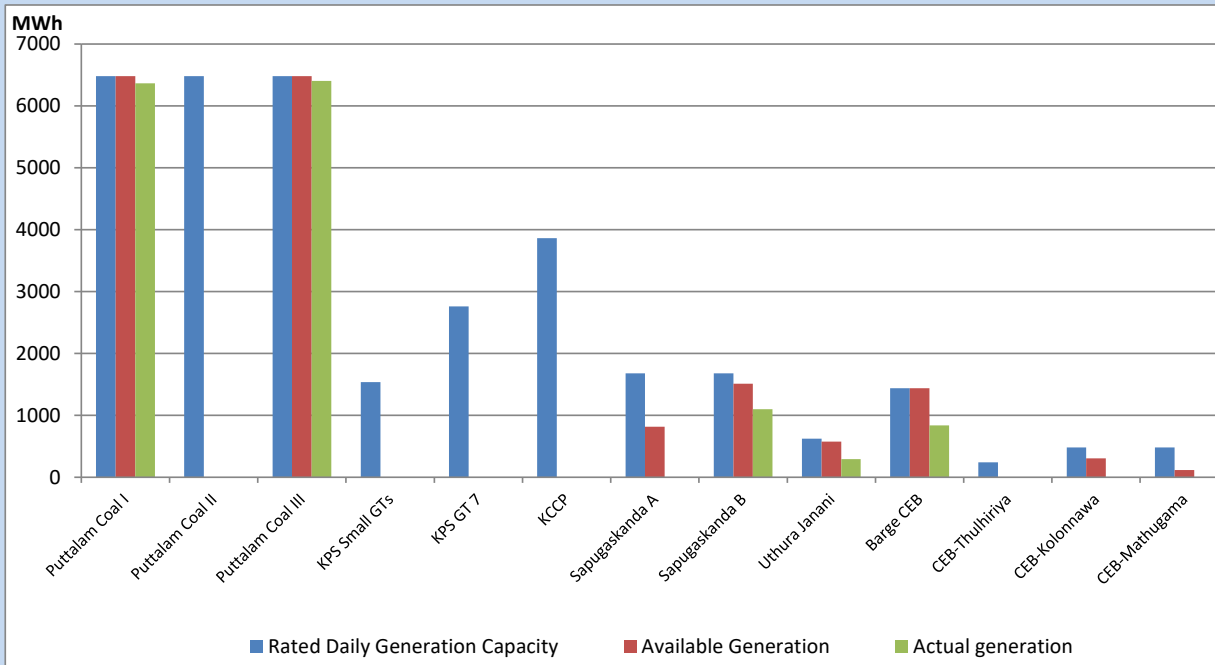
Category	Dispatch (GWh)	Percentage
CEB Hydro	635.54	53.20%
CEB Thermal Oil	56.99	4.77%
CEB Coal	293.43	24.56%
IPP Thermal	54.48	4.56%
SPP Wind	46.85	3.92%
CEB Wind	44.82	3.75%
SPP Solar	8.30	0.69%
SPP Solid Waste	5.09	0.43%
Mini Hydro	49.02	4.10%
<b>Total</b>	<b>1,194.52</b>	

### For Current Year

Category	Dispatch (GWh)	Percentage
CEB Hydro	3,133.7	31.70%
CEB Thermal Oil	1,112.4	11.25%
CEB Coal	3,713.1	37.57%
IPP Thermal	1,026.9	10.39%
SPP Wind	230.8	2.34%
CEB Wind	246.1	2.49%
SPP Solar	62.3	0.63%
SPP Solid Waste	49.2	0.50%
Mini Hydro	310.0	3.14%
<b>Total</b>	<b>9,884.1</b>	

## CEB owned Thermal Plant Dispatch

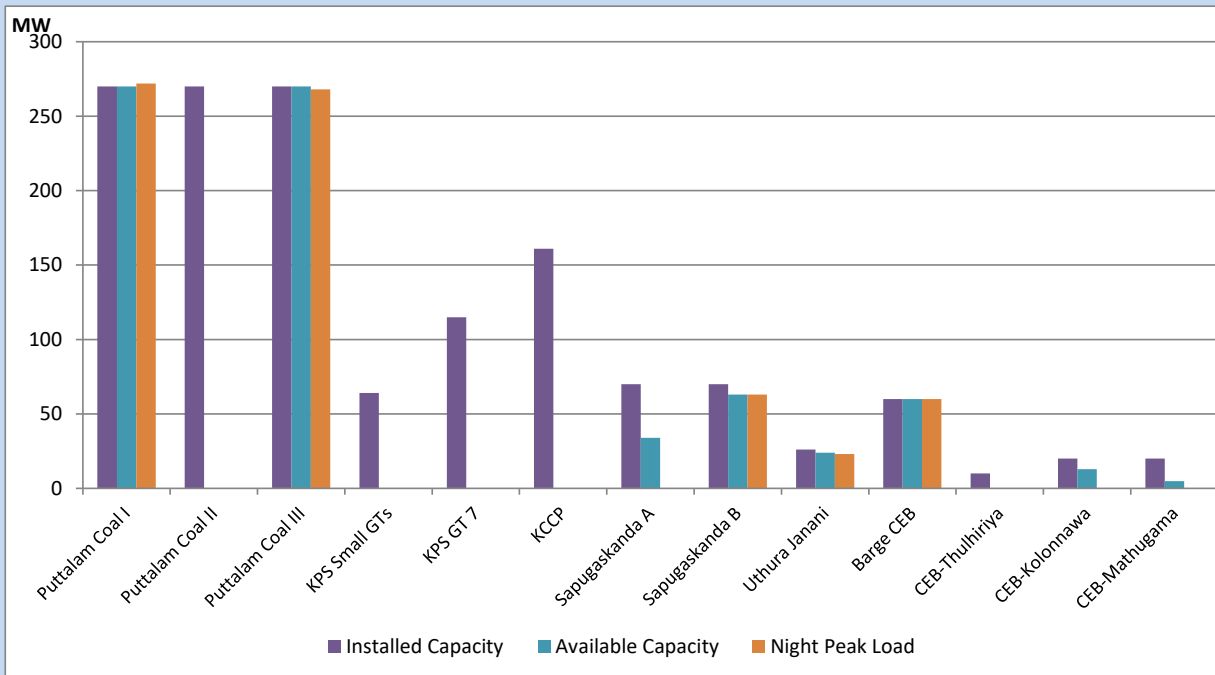
August 31, 2022



Available Generation is estimated based on plant availability at 6.00am on

September 1, 2022

## CEB owned Thermal Plant Loading at the Night Peak



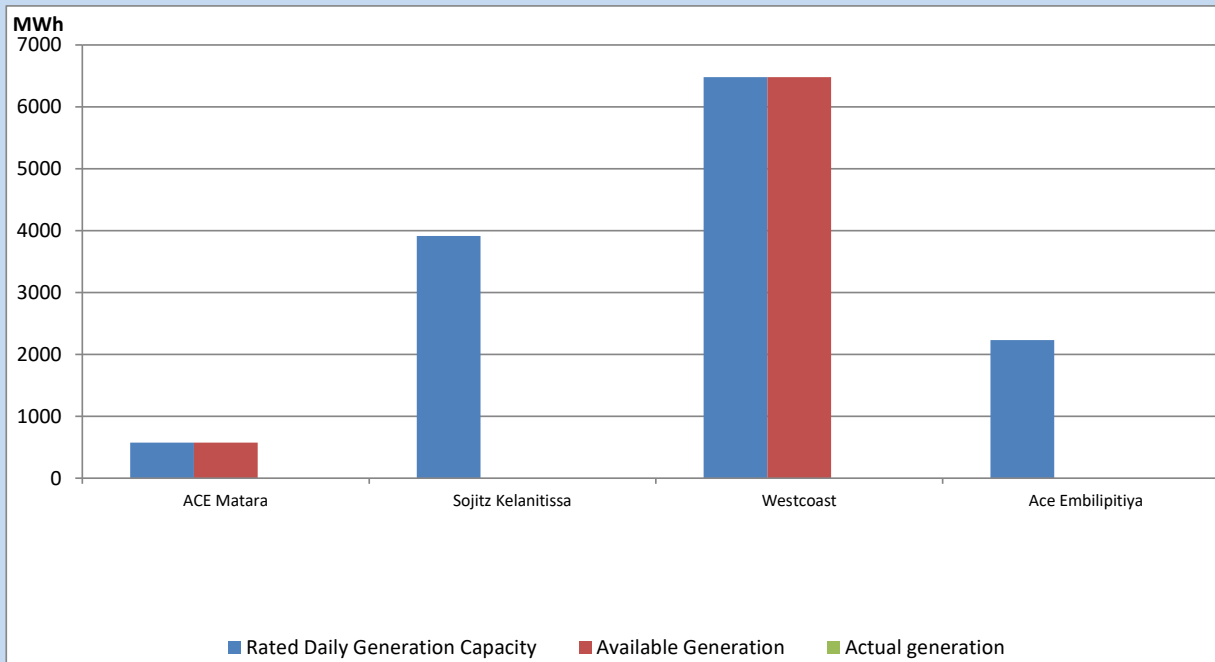
Note- Plant availability is recorded at 6.00 am on

September 1, 2022

## IPP owned Thermal Plant Dispatch

August 31, 2022

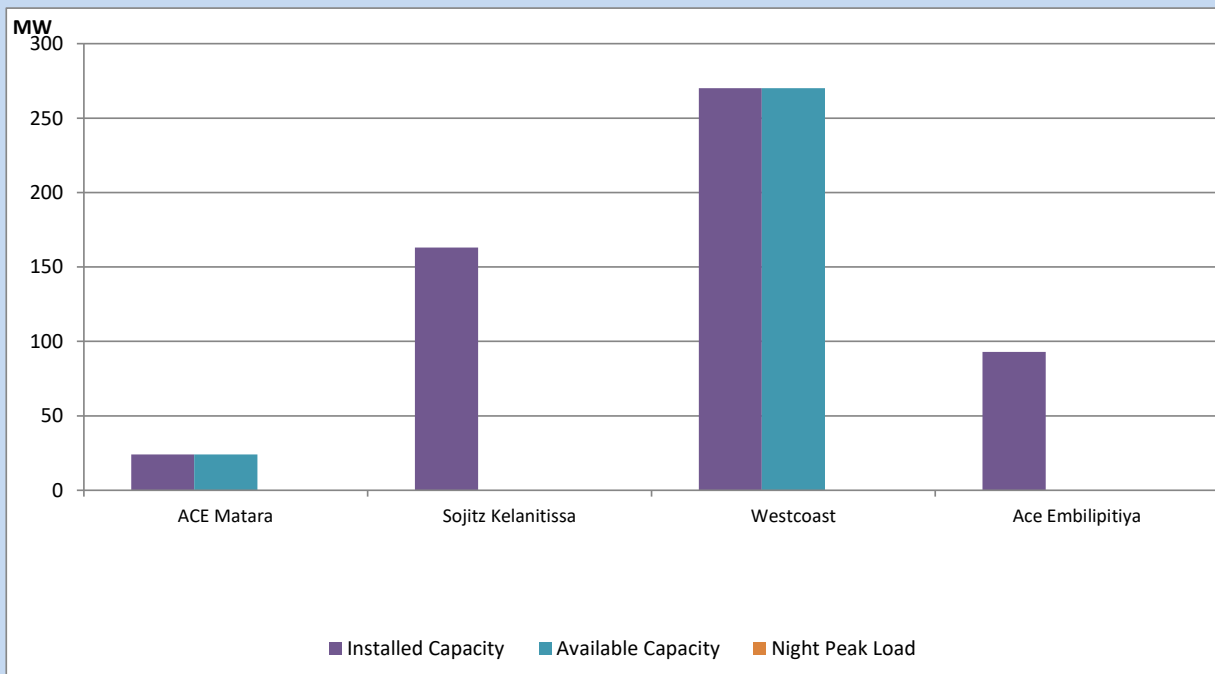
Asia Power, V Power Pallekale, Vpower Galle, V Power Horana, Vpower Hambantota, Vpower Valachchena and Altaqa Mahiyanganaya are not available due to expiration of PPAs



Available Generation is estimated based on plant availability at 6.00am on

September 1, 2022

## IPP owned Thermal Plant Loading at the Night Peak

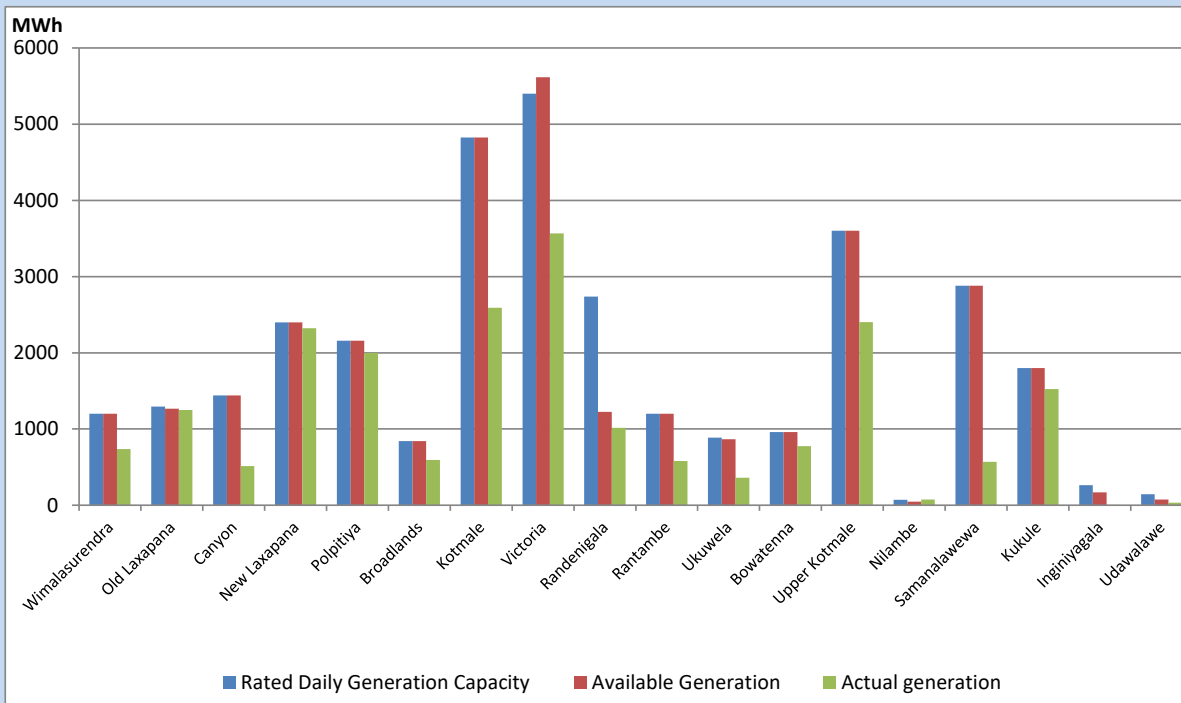


Note- Plant availability is recorded at 6.00 am on

September 1, 2022

## Major Hydro Plant Dispatch

August 31, 2022

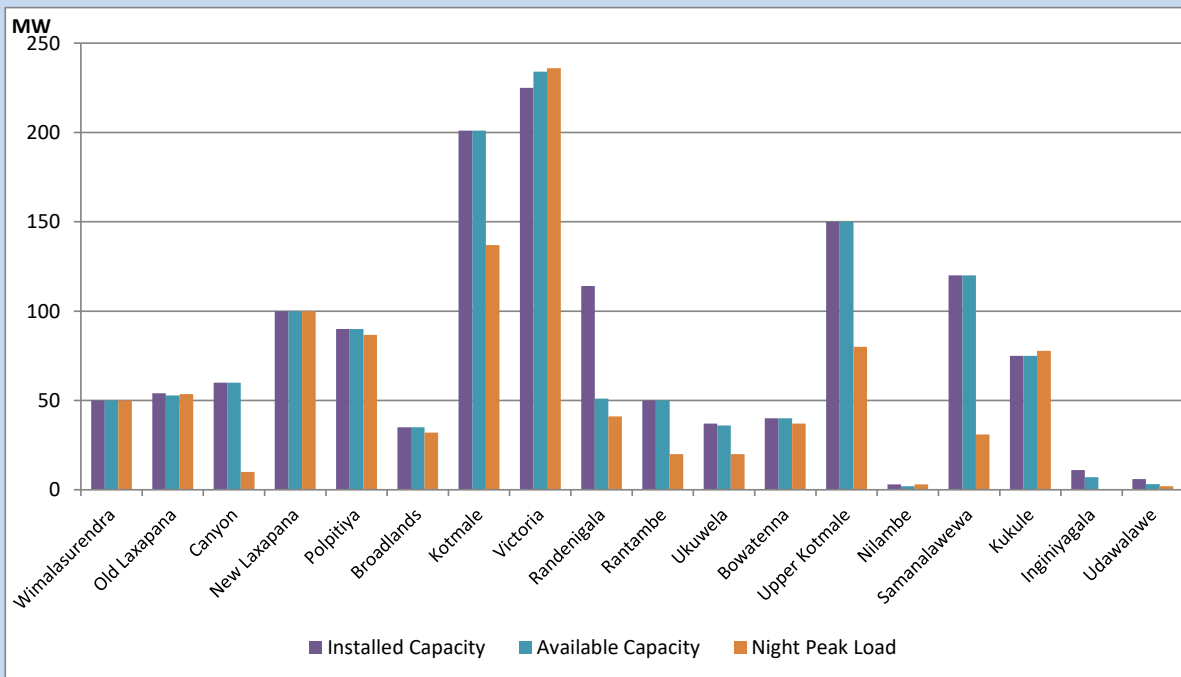


Available Generation is estimated based on plant availability at 6.00am on September 1, 2022  
 Broadlands power plant is operating in the Commissioning Stage

September 1, 2022

## Major Hydro Plant Loading at Night Peak

August 31, 2022



Note- Plant availability is recorded at 6.00 am on September 1, 2022  
 Broadlands power plant is operating in the Commissioning Stage

## Summary of Major Plant performance

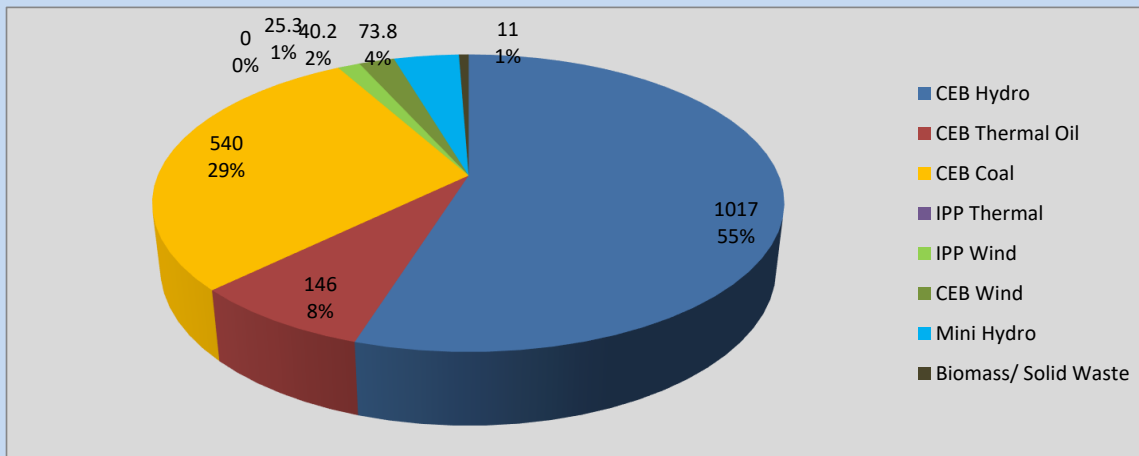
Plant	Installed Capacity	Plant Availability	Night peak Load	Plant Dispatch
	(MW)	(MW)	(MW)	(MWh)
Wimalasurendra	50	50	50	738
Old Laxapana	54	53	54	1,250
Canyon	60	60	10	515
New Laxapana	100	100	100	2,324
Polpitiya	90	90	87	1,998
Broadlands	35	35	32	594
Kotmale	201	201	137	2,590
Victoria	225	234	236	3,566
Randenigala	114	51	41	1,014
Rantambe	50	50	20	579
Ukuwela	37	36	20	361
Bowatenna	40	40	37	775
Upper Kotmale	150	150	80	2,403
Nilambe	3	2	3	73
Samanalawewa	120	120	31	569
Kukule	75	75	78	1,523
Inginiyagala	11	7	0	1
Udawalawe	6	3	2	31
Puttalam Coal I	270	270	272	6,364
Puttalam Coal II	270	0	0	0
Puttalam Coal III	270	270	268	6,403
KPS Small GTs	64	0	0	0
KPS GT 7	115	0	0	0
KCCP	161	0	0	0
Sapugaskanda A	70	34	0	0
Sapugaskanda B	70	63	63	1,101
Uthura Janani	26	24	23	294
Barge CEB	60	60	60	837
CEB-Thulhiriya	10	0	0	0
CEB-Kolonnawa	20	13	0	0
CEB-Mathugama	20	5	0	0
ACE Matara	24	24	0	0
Sojitz Kelanitissa	163	0	0	0
West Coast	270	270	0	0
ACE Embilipitiya	93	0	0	0
<b>Total</b>	<b>3,397</b>	<b>2,390</b>	<b>1,853</b>	<b>39,177</b>

Plant availability is the availability recorded at 6 am on

September 1, 2022

## Contribution to the Night Peak in MW

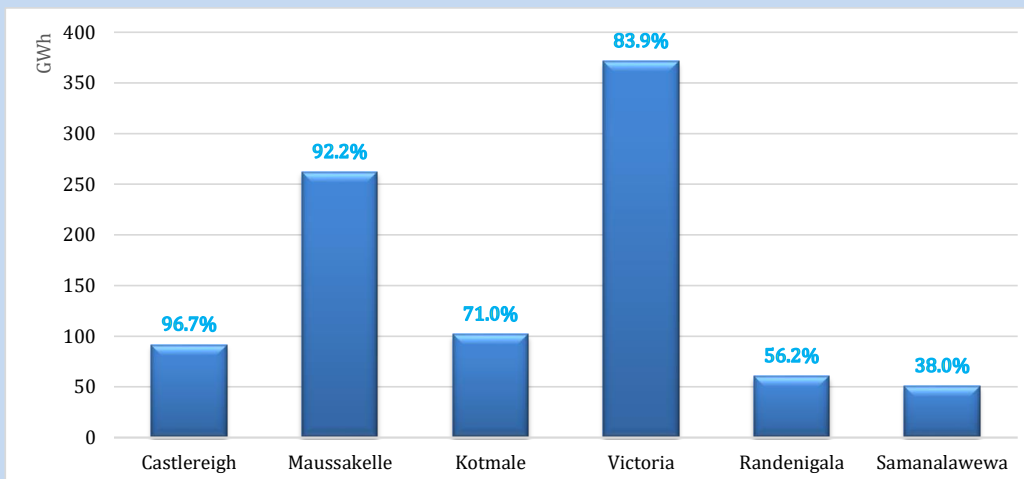
August 31, 2022



Night Peak*	1,853.3 MW
Day Peak	1,945.4 MW
Minimum Demand	1,109.1 MW

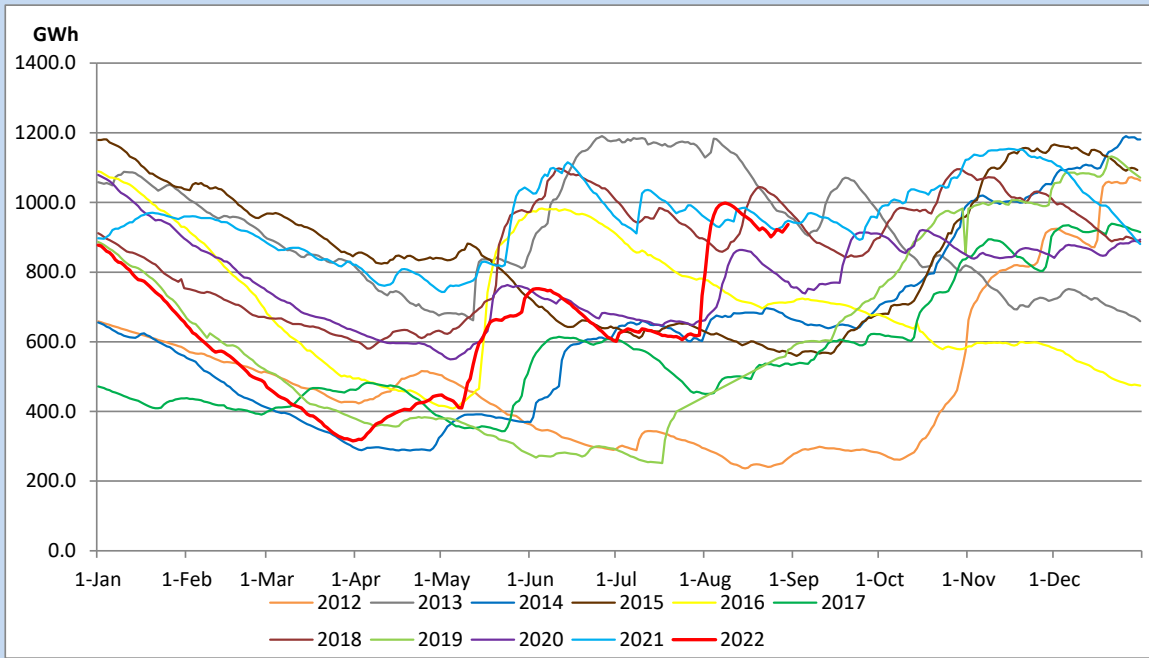
Above figures are excluding contribution from Roof Top Solar, 1MW solar, certain Wind plants and Mini Hydro plants

## Reservoir Levels - as at 06.00 Hr on September 1, 2022

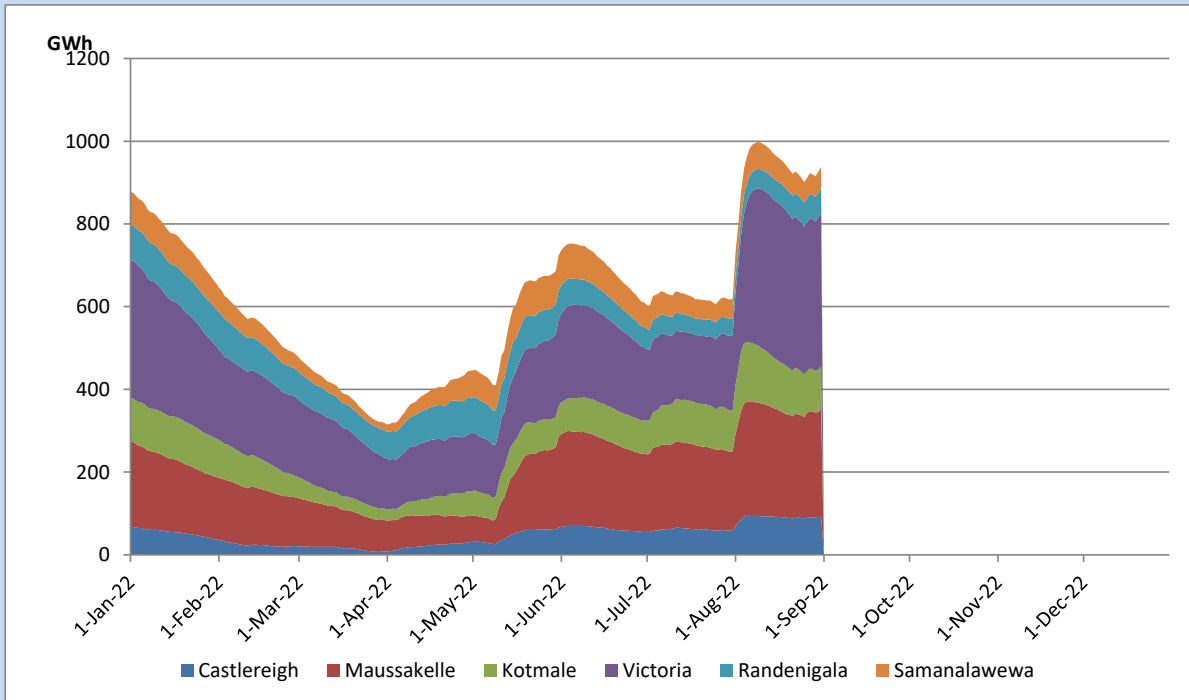


Total Reservoir Level	937.2 GWh
% of Total capacity	77.8%

## Comparison of Total Reservoir Storage Levels with Past Years

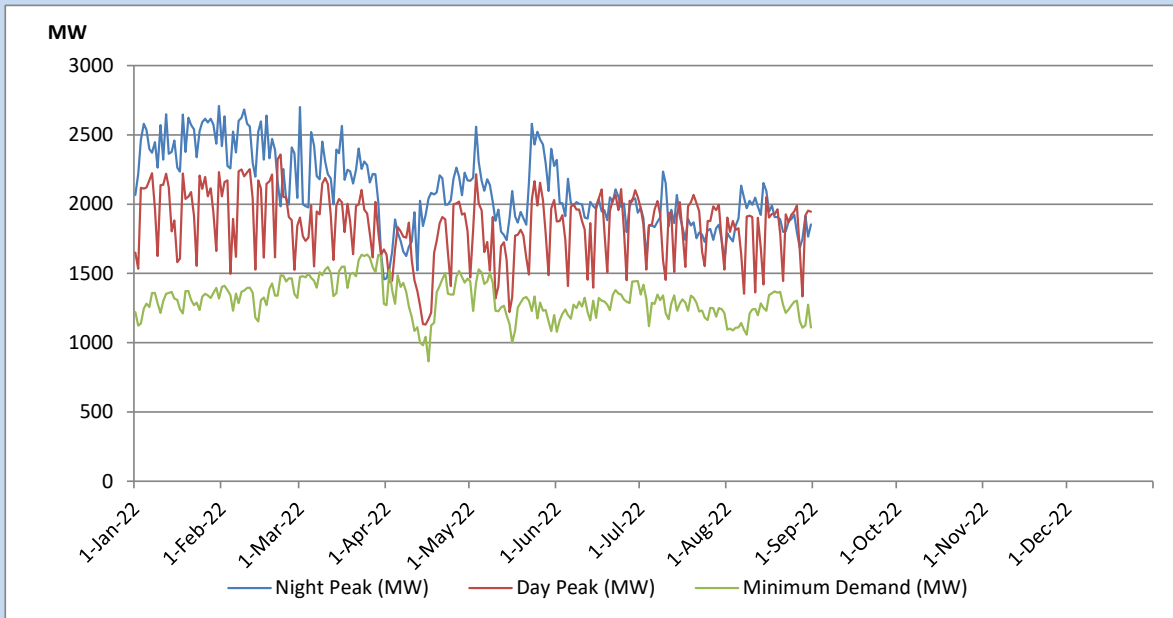


## Variation of Major Hydro Reservoir Levels in the current year (GWh)





## Variation of Demand during the current year

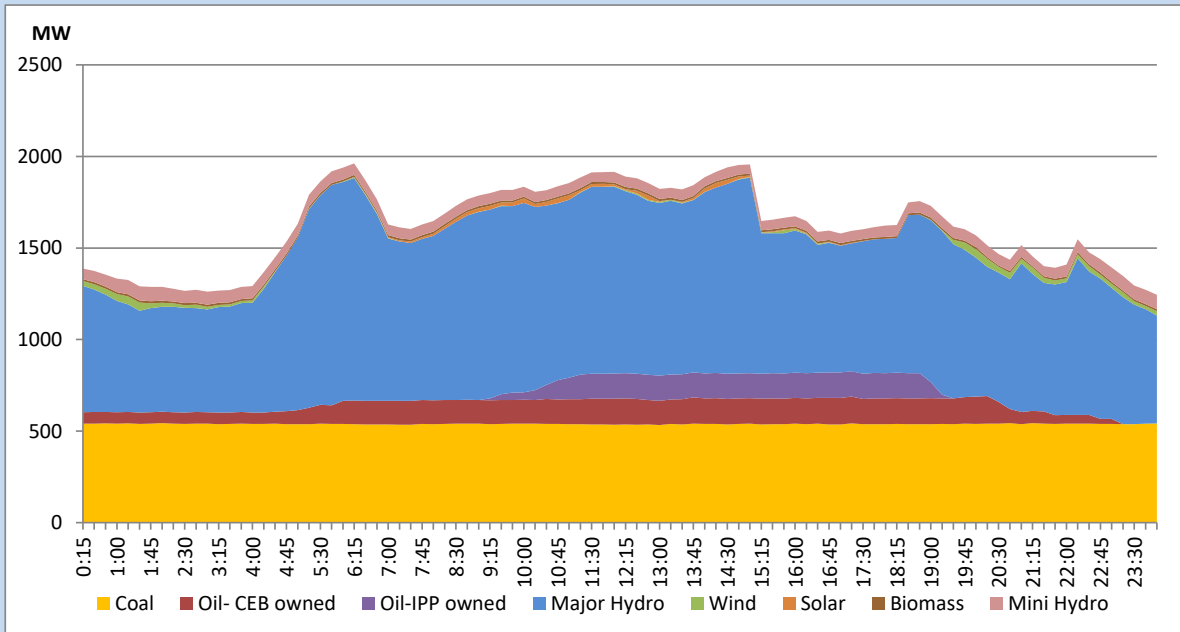


The above figures are excluding contribution from Roof Top Solar, 1MW solar, certain Wind plants and Mini Hydro plants

## Daily Load Curve of the Previous day

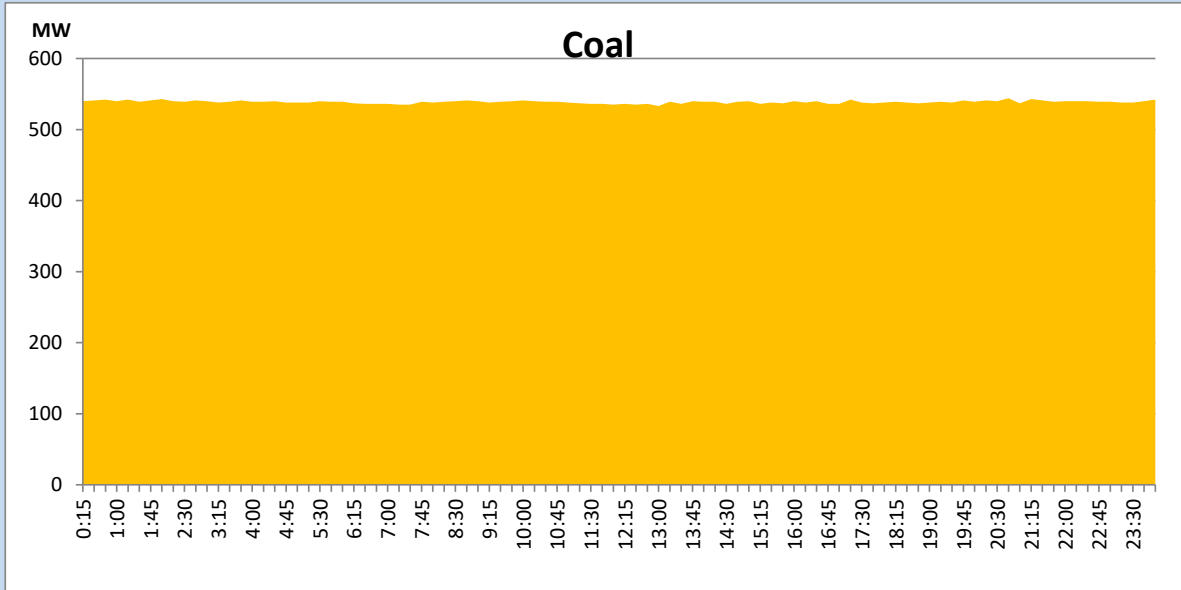
August 30, 2022

Solar and wind data is based on Telemetered Power Stations only



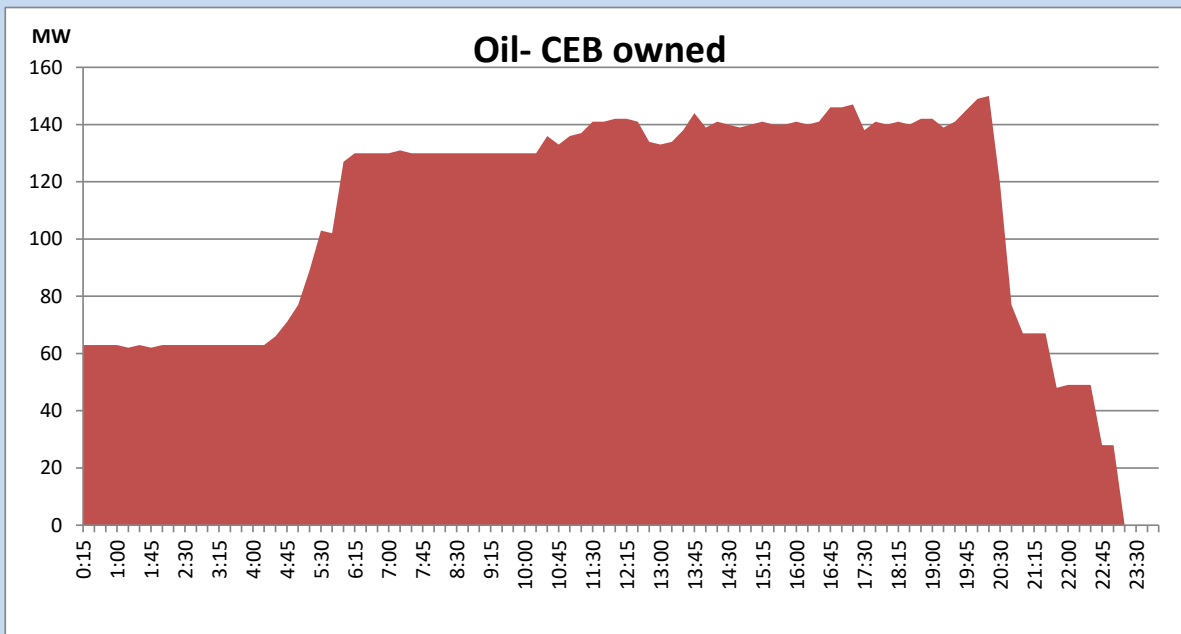
## Coal Generation during the Previous day

August 30, 2022



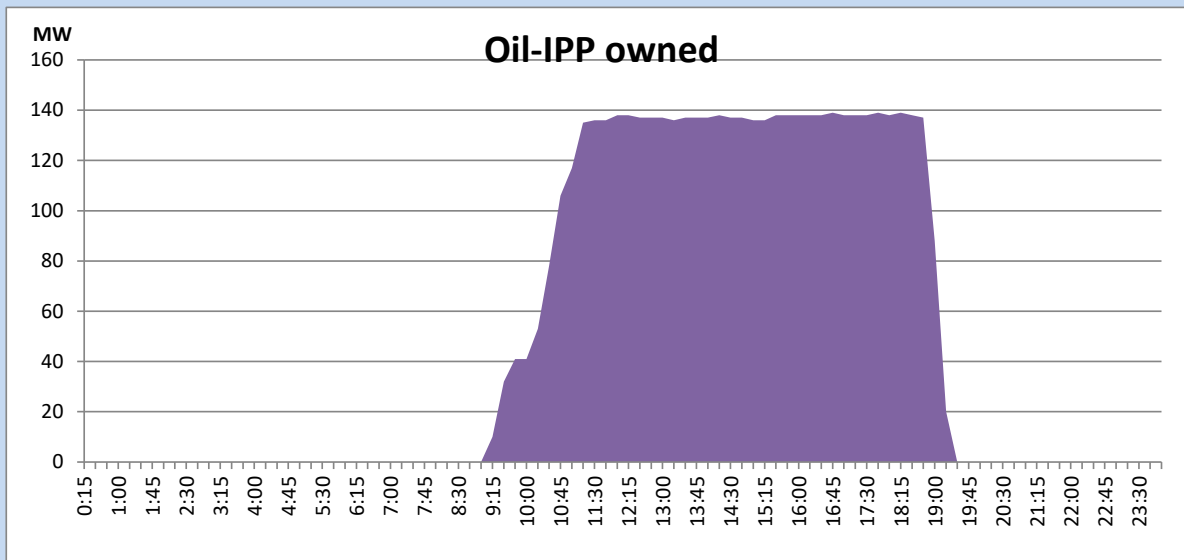
## CEB Oil Plant Generation during the Previous day

August 30, 2022



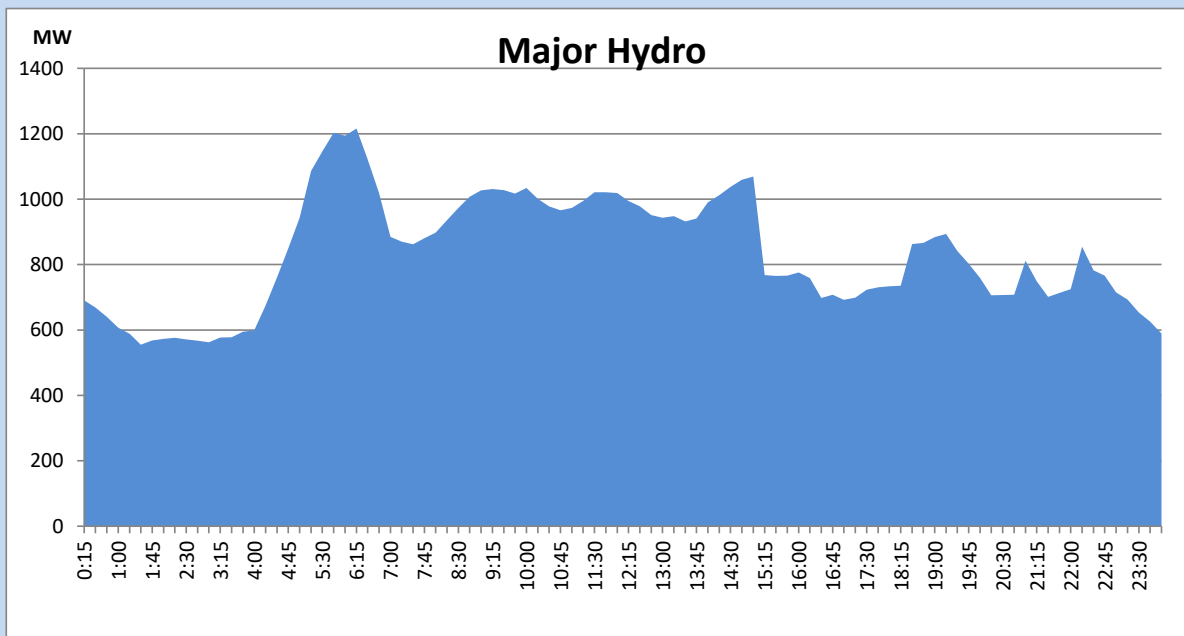
## IPP Oil Plant Generation during the Previous day

August 30, 2022



## Major Hydro Generation during the Previous day

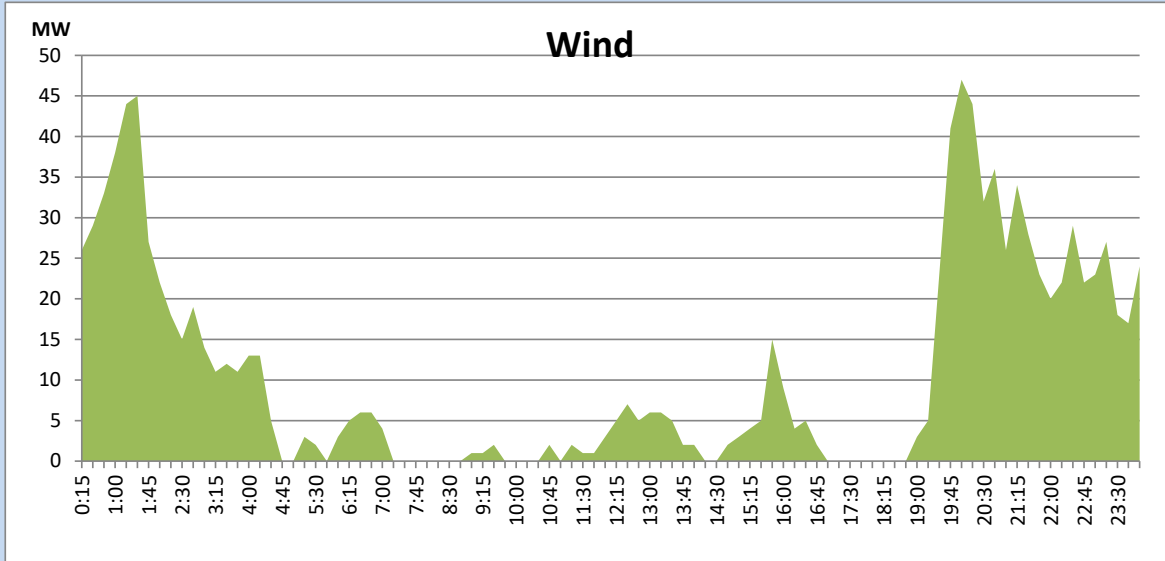
August 30, 2022



## Wind Generation during the Previous day

August 30, 2022

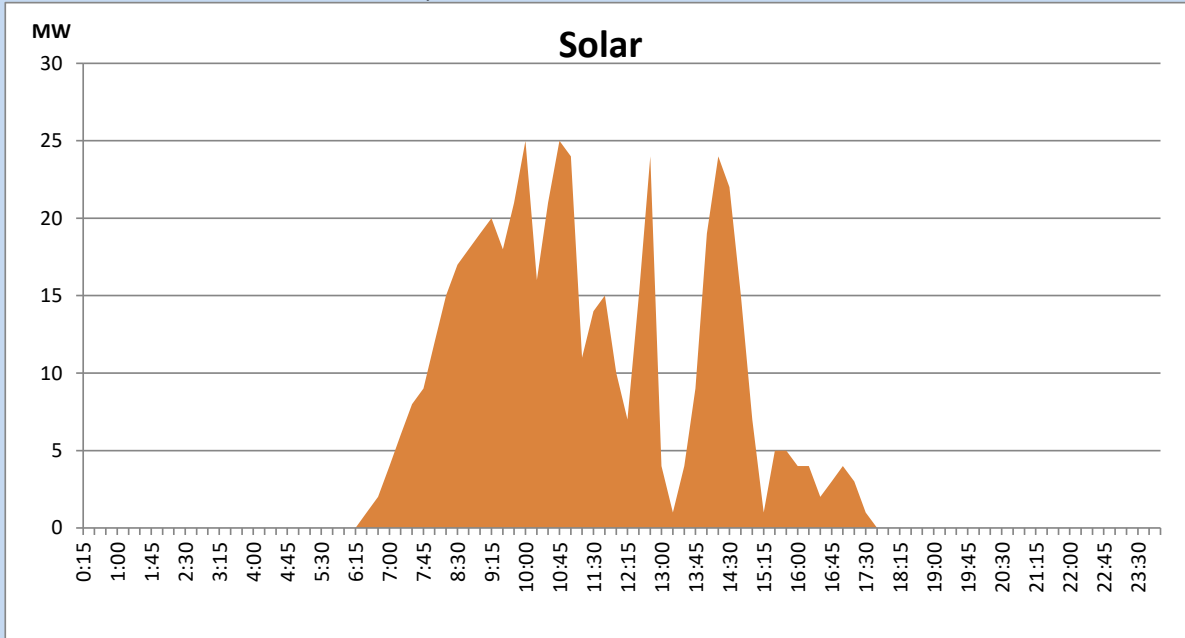
Based on Telemetered Power Stations only



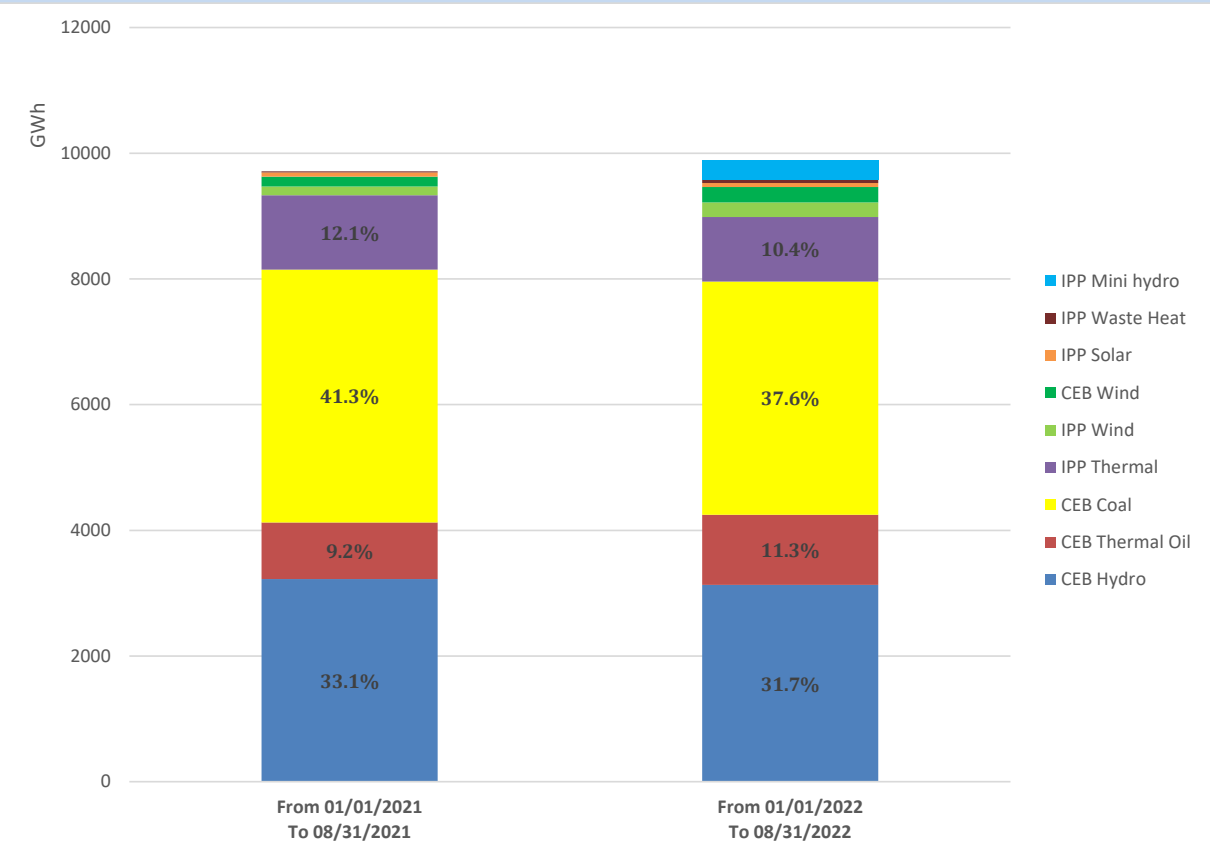
## Solar Generation during the Previous day

August 30, 2022

Based on Telemetered Power Stations only



# Cumulative Dispatch Comparison with Last Year



## Thermal Plant Fuel types

Power Station	Primary Fuel
CEB Thermal	
Sapugaskanda 1	Heavy Fuel
Sapugaskanda 2	Heavy Fuel
Kelanitissa Small Gas Turbines	Auto Diesel
GT 7 - Kelanitissa	Auto Diesel
Kelanitissa CCY	Naphtha or Diesel
Lakvijaya 1	Coal
Lakvijaya 2	Coal
Lakvijaya 3	Coal
Uthuru Janani	Heavy Fuel
Barge CEB	Heavy Fuel

Power Station	Primary Fuel
Private Thermal	
Sojitz - Kelanitissa	Auto Diesel
West Coast	Auto Diesel / Heavy Fuel
ACE Matara	Heavy Fuel
ACE Embilipitiya	Heavy Fuel

## Major Incidents during the day -as reported by CEB morning of

September 1, 2022

- 1) Rotational manual load shedding was carried out from 18:00 hrs to 22:00 hrs.
- 2) Laxapana and Norton ponds spilling started at 13:34hrs and 14:56hrs respectively. Laxapana pond spilling stopped at 22:15hrs and again started at 05:05hrs (01/09/2022). Laxapana and Norton ponds spilling continues to the present hour.
- 3) Habarana 132/33kV T/F 02 which tripped on 30/08/2022 was restored at 15:51hrs.
- 4) Kukule pond spilling started at 16:40 hrs and continues to the present hour.