

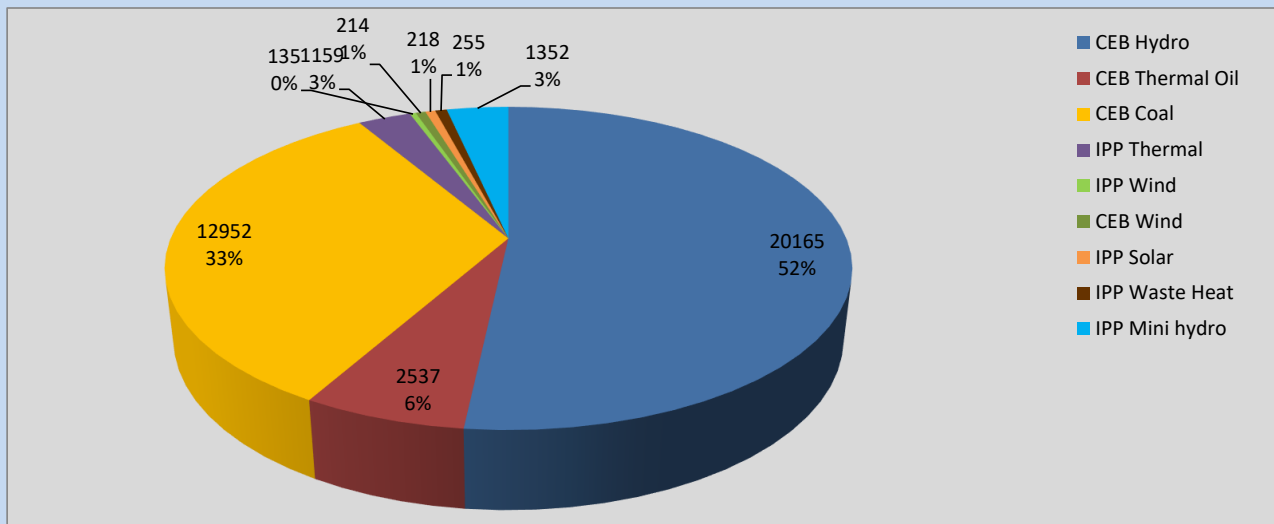
# Generation and Reservoirs Statistics

August 30, 2022



PUBLIC UTILITIES COMMISSION OF SRI LANKA

## Daily Generation Mix in MWh



**Total Generation** **38,987 MWh**

Note: Above data is excluding contribution from Roof Top Solar, 1MW Solar and certain Mini Hydro plants

## Cumulative Dispatch

Note: Following data is Excluding contribution from Roof Top Solar, 1MW solar and Mini Hydro plants

### For Current Month

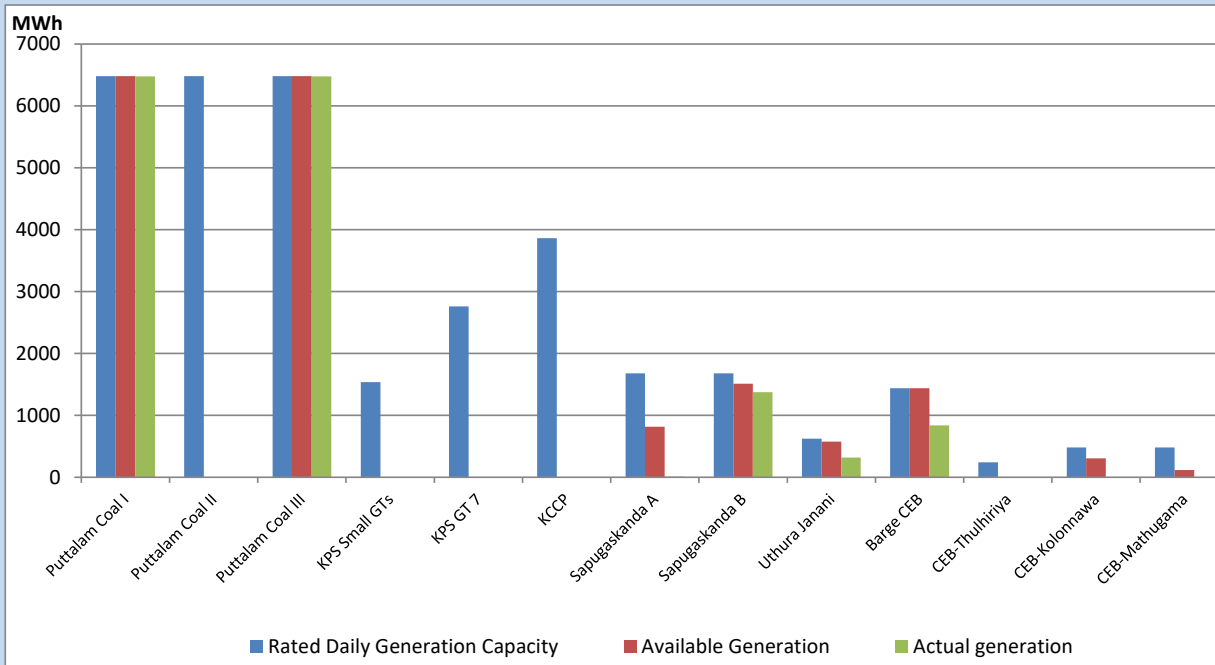
Category	Dispatch (GWh)	Percentage
CEB Hydro	614.64	53.20%
CEB Thermal Oil	54.75	4.74%
CEB Coal	280.66	24.29%
IPP Thermal	54.48	4.72%
SPP Wind	46.20	4.00%
CEB Wind	44.21	3.83%
SPP Solar	8.25	0.71%
SPP Solid Waste	4.84	0.42%
Mini Hydro	47.31	4.09%
<b>Total</b>	<b>1,155.34</b>	

### For Current Year

Category	Dispatch (GWh)	Percentage
CEB Hydro	3,112.8	31.62%
CEB Thermal Oil	1,110.1	11.28%
CEB Coal	3,700.3	37.59%
IPP Thermal	1,026.9	10.43%
SPP Wind	230.2	2.34%
CEB Wind	245.5	2.49%
SPP Solar	62.2	0.63%
SPP Solid Waste	48.9	0.50%
Mini Hydro	308.3	3.13%
<b>Total</b>	<b>9,844.9</b>	

## CEB owned Thermal Plant Dispatch

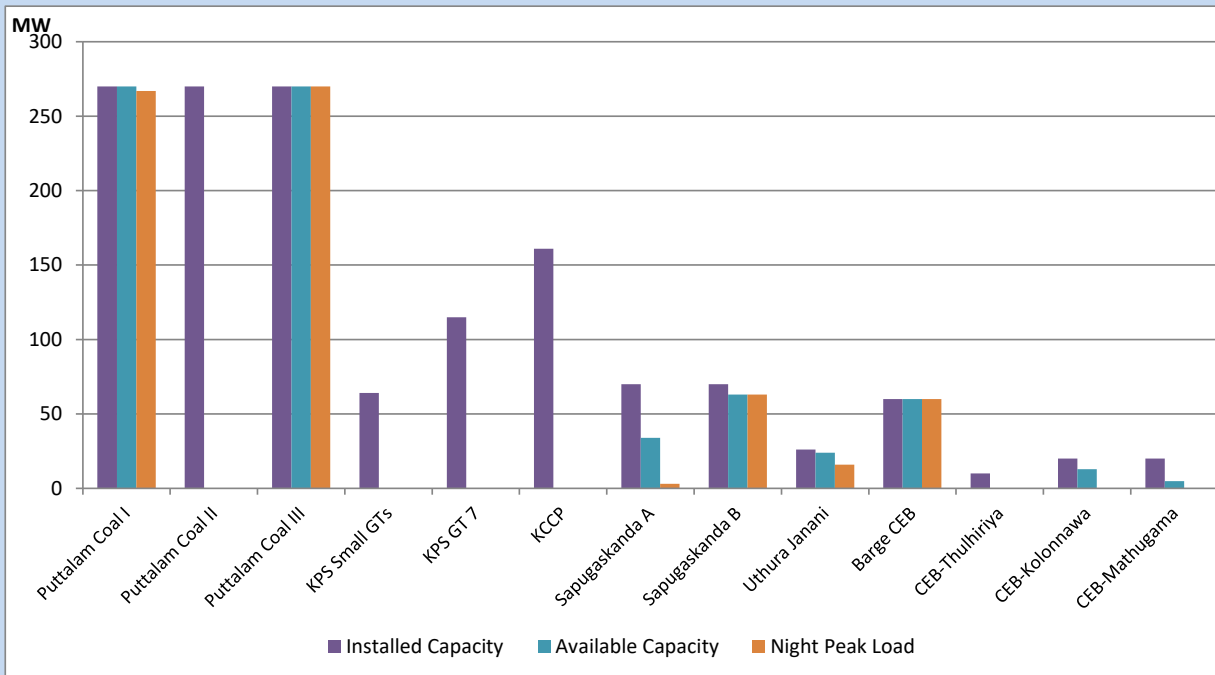
August 30, 2022



Available Generation is estimated based on plant availability at 6.00am on

August 31, 2022

## CEB owned Thermal Plant Loading at the Night Peak



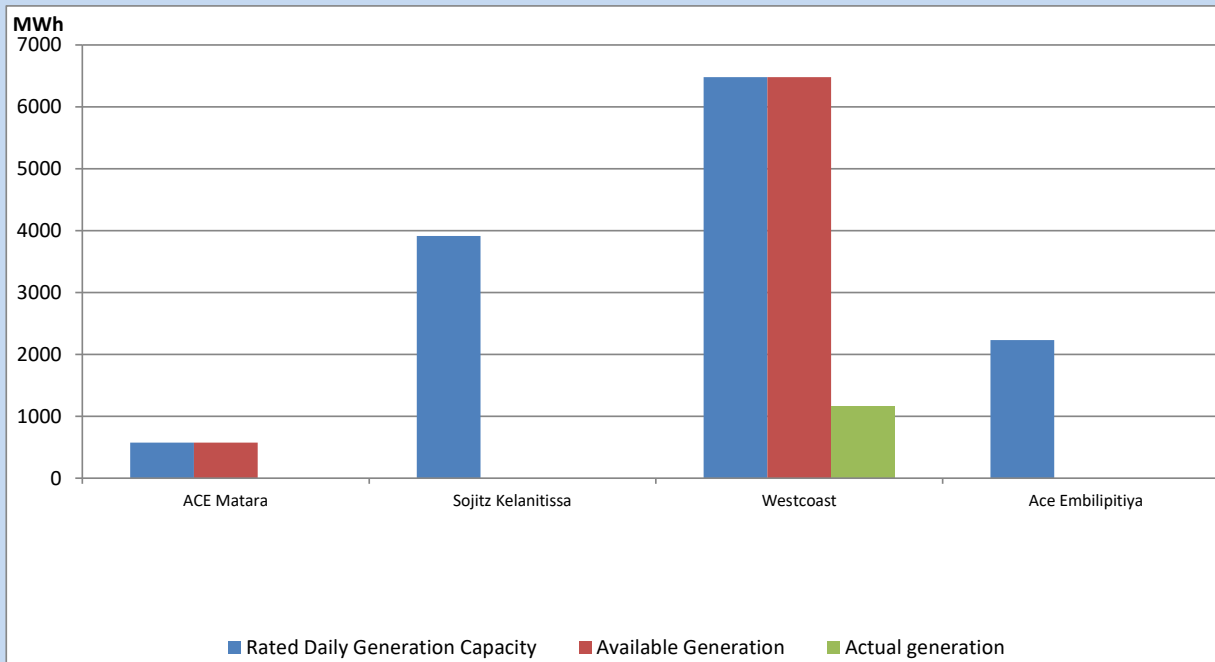
Note- Plant availability is recorded at 6.00 am on

August 31, 2022

## IPP owned Thermal Plant Dispatch

August 30, 2022

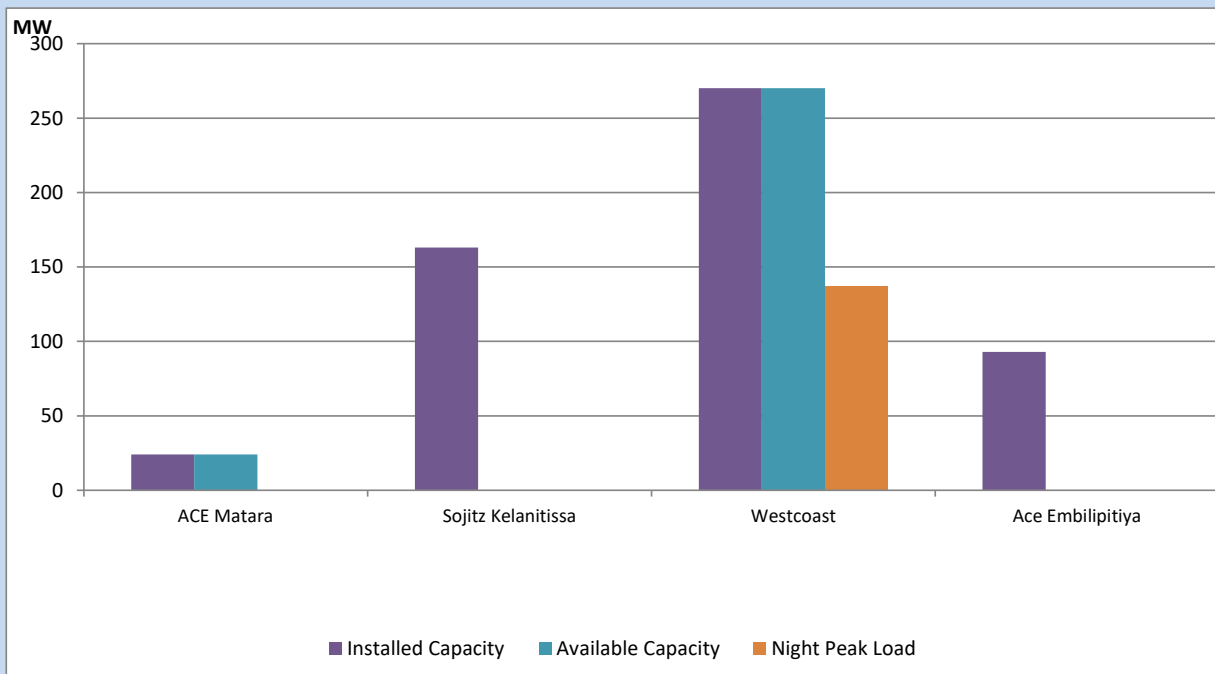
Asia Power, V Power Pallekale, Vpower Galle, V Power Horana, Vpower Hambantota, Vpower Valachchena and Altaqa Mahiyanganaya are not available due to expiration of PPAs



Available Generation is estimated based on plant availability at 6.00am on

August 31, 2022

## IPP owned Thermal Plant Loading at the Night Peak

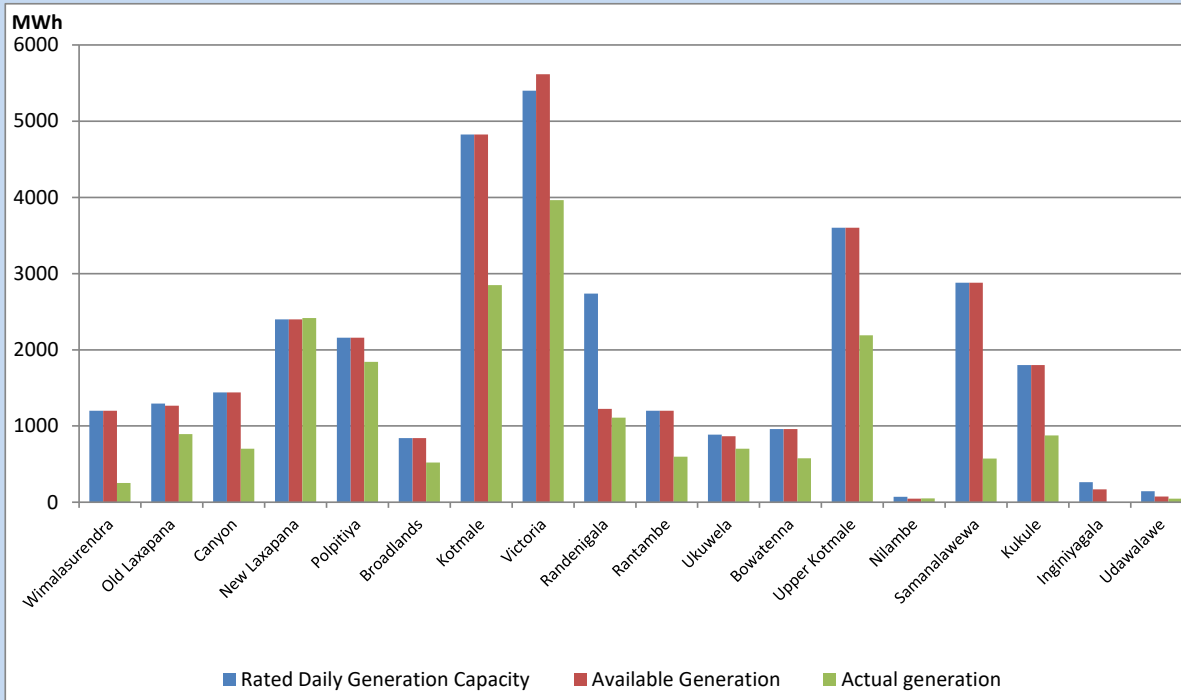


Note- Plant avilability is recorded at 6.00 am on

August 31, 2022

## Major Hydro Plant Dispatch

August 30, 2022

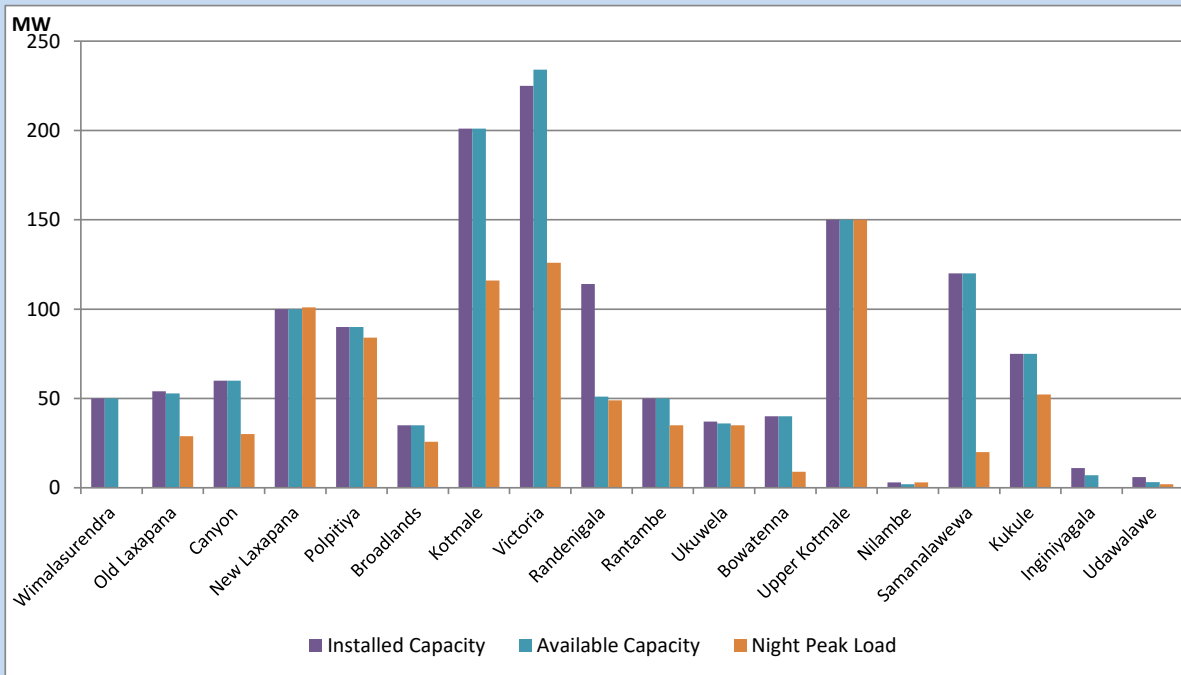


Available Generation is estimated based on plant availability at 6.00am on August 31, 2022  
 Broadlands power plant is operating in the Commissioning Stage

August 31, 2022

## Major Hydro Plant Loading at Night Peak

August 30, 2022



Note- Plant availability is recorded at 6.00 am on August 31, 2022  
 Broadlands power plant is operating in the Commissioning Stage

## Summary of Major Plant performance

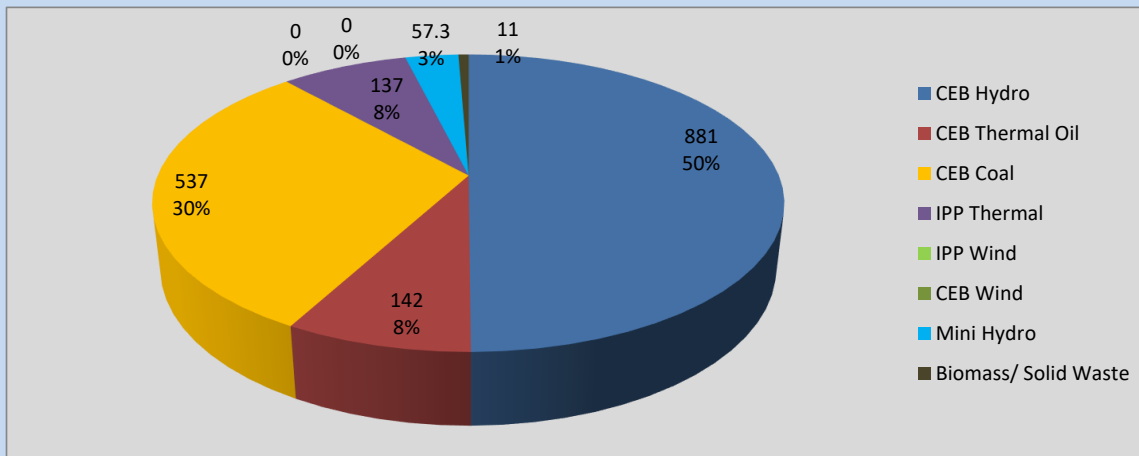
Plant	Installed Capacity	Plant Availability	Night peak Load	Plant Dispatch
	(MW)	(MW)	(MW)	(MWh)
Wimalasurendra	50	50	0	252
Old Laxapana	54	53	29	892
Canyon	60	60	30	703
New Laxapana	100	100	101	2,418
Polpitiya	90	90	84	1,843
Broadlands	35	35	26	522
Kotmale	201	201	116	2,850
Victoria	225	234	126	3,963
Randenigala	114	51	49	1,111
Rantambe	50	50	35	596
Ukuwela	37	36	35	702
Bowatenna	40	40	9	577
Upper Kotmale	150	150	150	2,191
Nilambe	3	2	3	50
Samanalawewa	120	120	20	573
Kukule	75	75	52	877
Inginiyagala	11	7	0	0
Udawalawe	6	3	2	45
Puttalam Coal I	270	270	267	6,475
Puttalam Coal II	270	0	0	0
Puttalam Coal III	270	270	270	6,477
KPS Small GTs	64	0	0	0
KPS GT 7	115	0	0	0
KCCP	161	0	0	0
Sapugaskanda A	70	34	3	8
Sapugaskanda B	70	63	63	1,373
Uthura Janani	26	24	16	319
Barge CEB	60	60	60	837
CEB-Thulhiriya	10	0	0	0
CEB-Kolonnawa	20	13	0	0
CEB-Mathugama	20	5	0	0
ACE Matara	24	24	0	0
Sojitz Kelanitissa	163	0	0	0
West Coast	270	270	137	1,159
ACE Embilipitiya	93	0	0	0
<b>Total</b>	<b>3,397</b>	<b>2,390</b>	<b>1,751</b>	<b>38,987</b>

Plant availability is the availability recorded at 6 am on

August 31, 2022

## Contribution to the Night Peak in MW

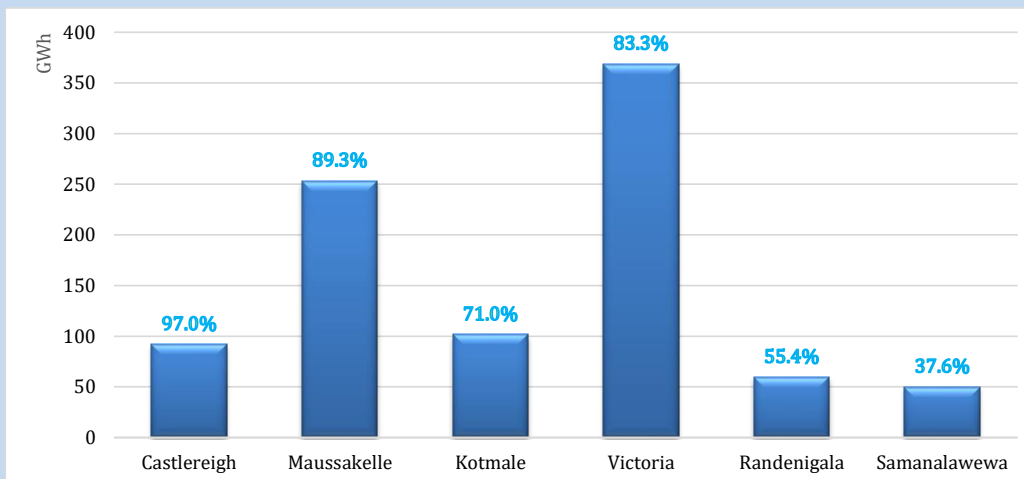
August 30, 2022



Night Peak*	1,765.3 MW
Day Peak	1,952.8 MW
Minimum Demand	1,273.8 MW

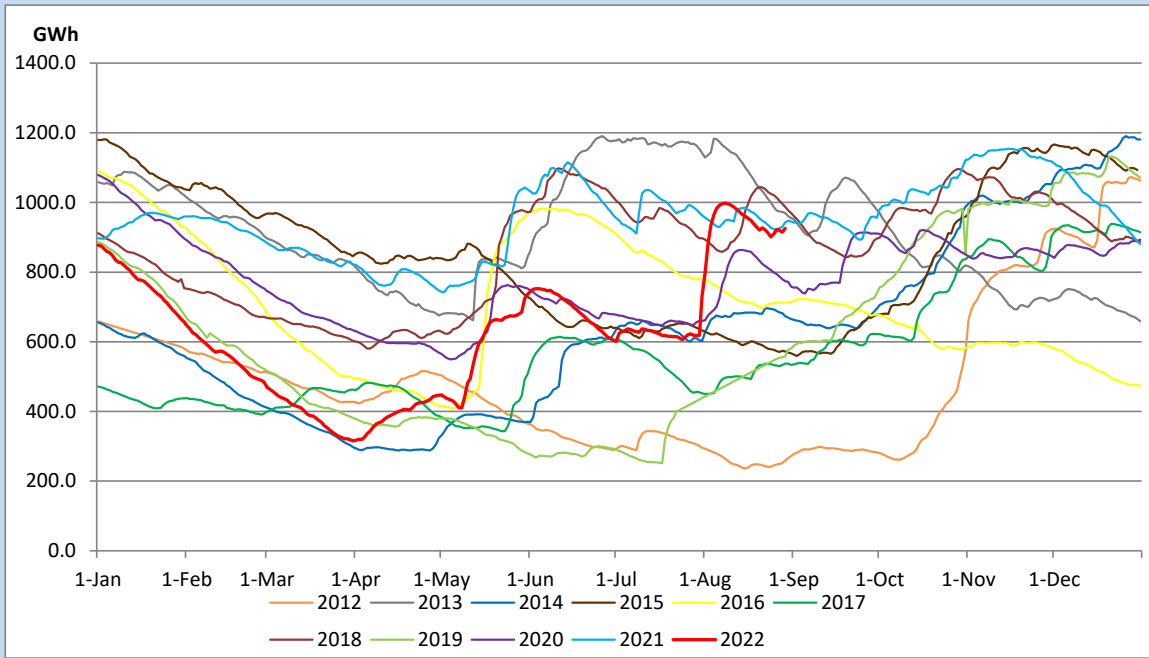
Above figures are excluding contribution from Roof Top Solar, 1MW solar, certain Wind plants and Mini Hydro plants

## Reservoir Levels - as at 06.00 Hr on August 31, 2022

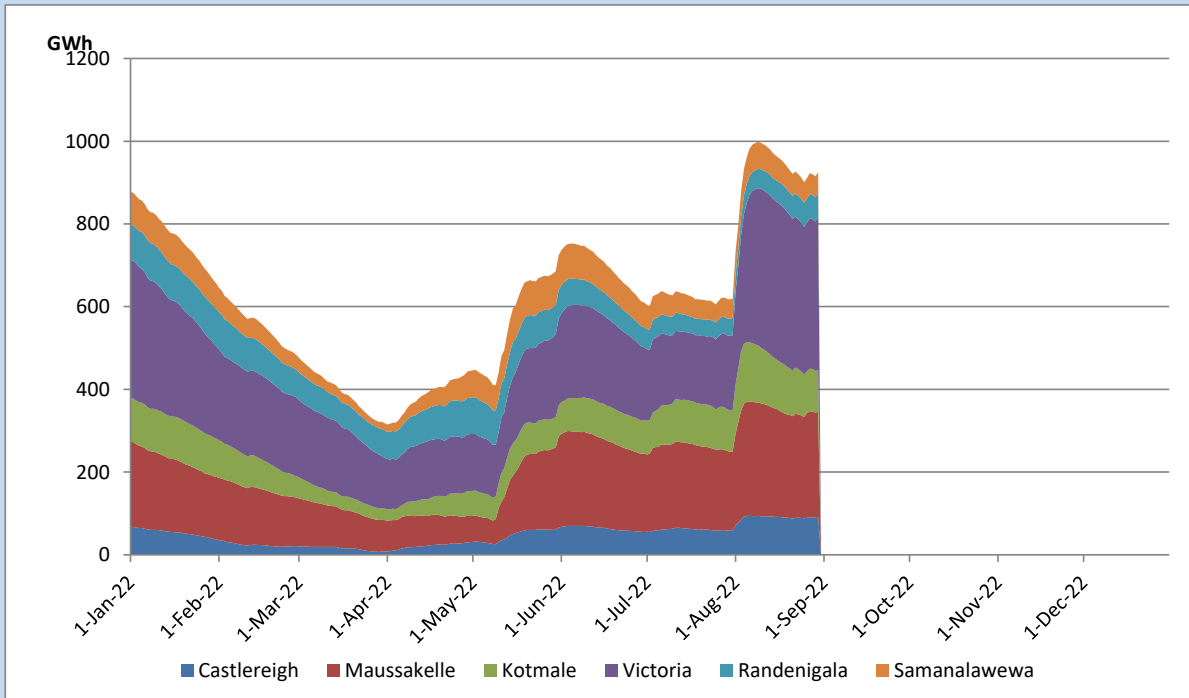


Total Reservoir Level	925.5 GWh
% of Total capacity	76.8%

## Comparison of Total Reservoir Storage Levels with Past Years

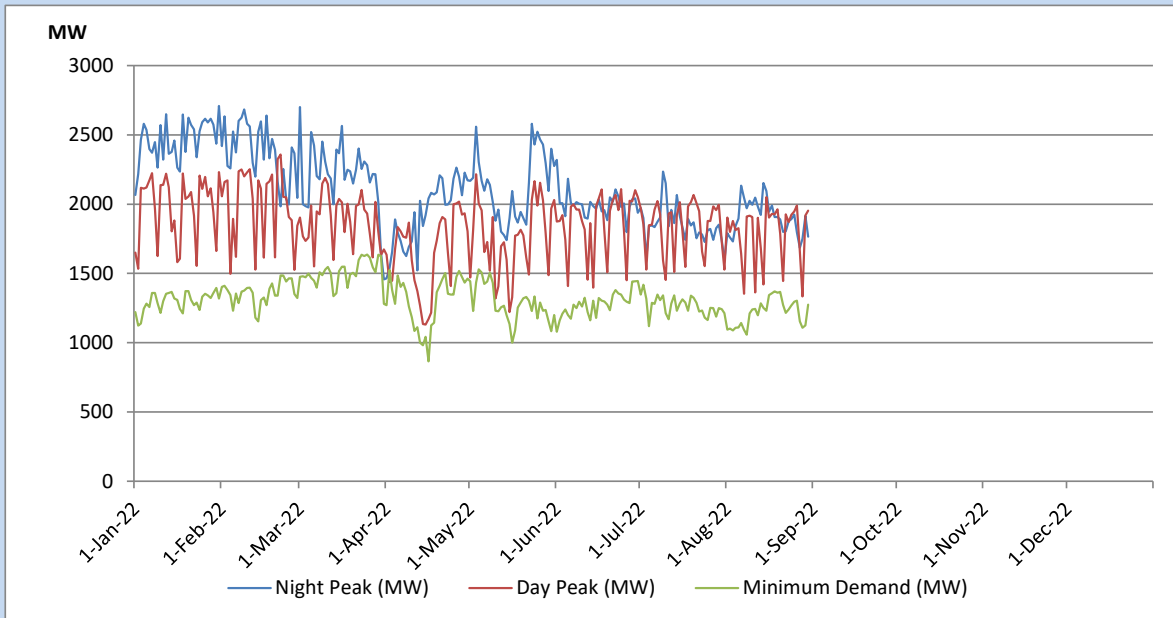


## Variation of Major Hydro Reservoir Levels in the current year (GWh)





## Variation of Demand during the current year

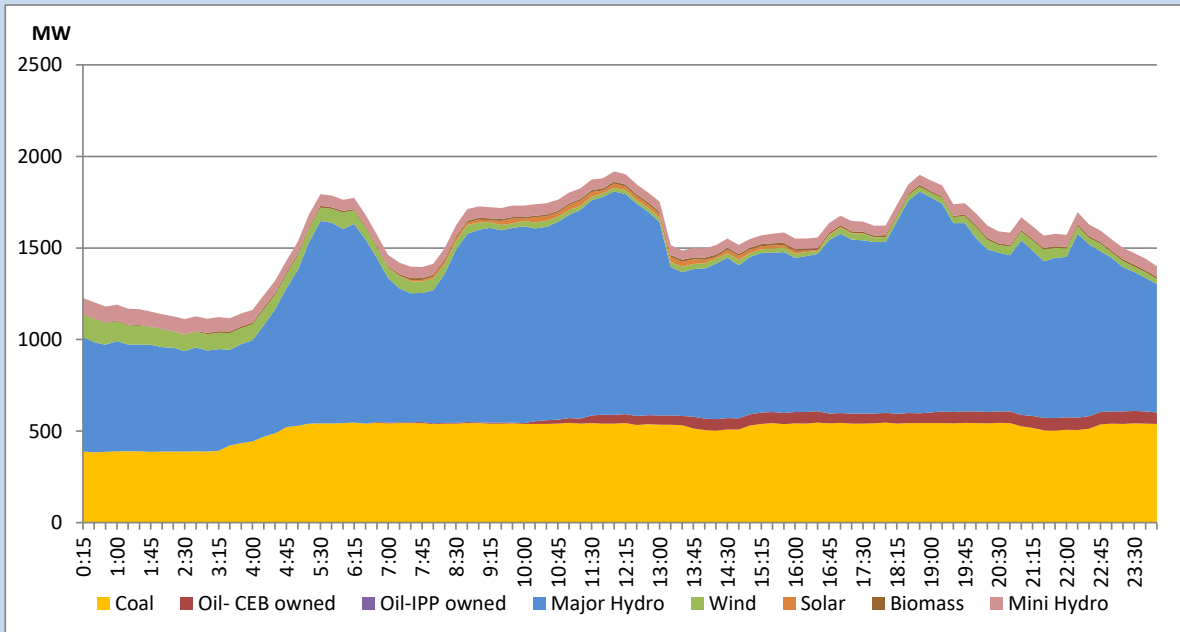


The above figures are excluding contribution from Roof Top Solar, 1MW solar, certain Wind plants and Mini Hydro plants

## Daily Load Curve of the Previous day

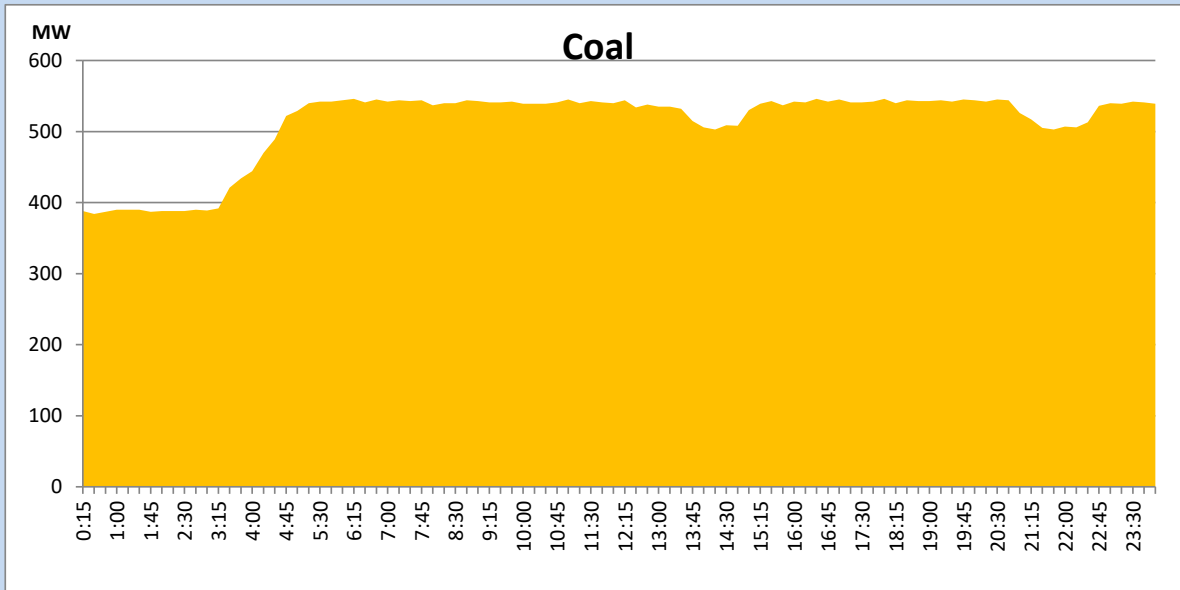
August 29, 2022

Solar and wind data is based on Telemetered Power Stations only



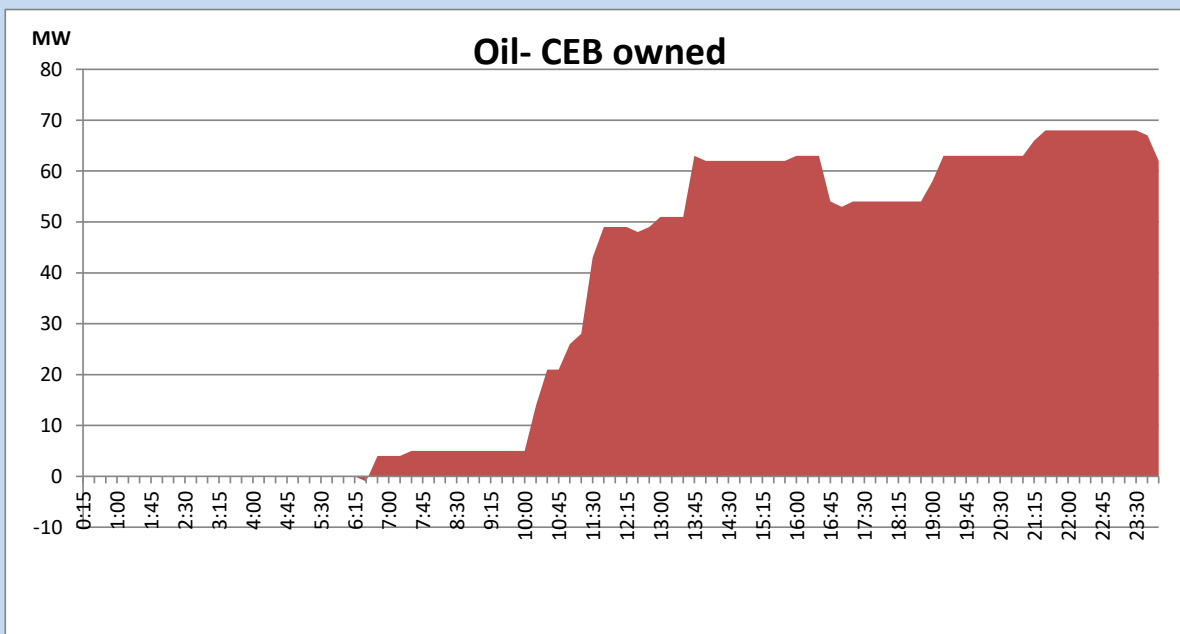
## Coal Generation during the Previous day

August 29, 2022



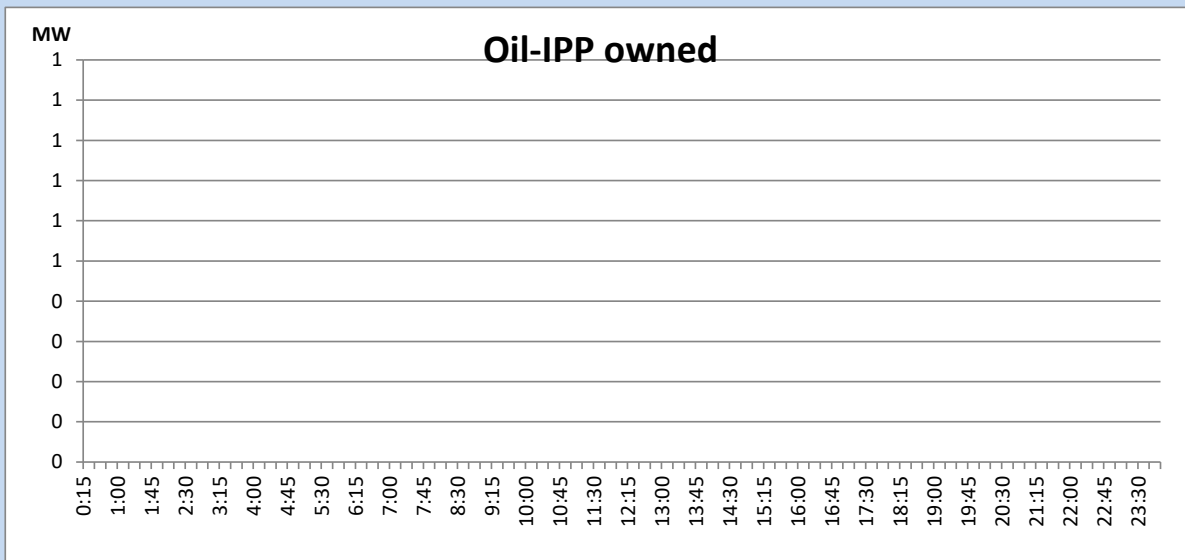
## CEB Oil Plant Generation during the Previous day

August 29, 2022



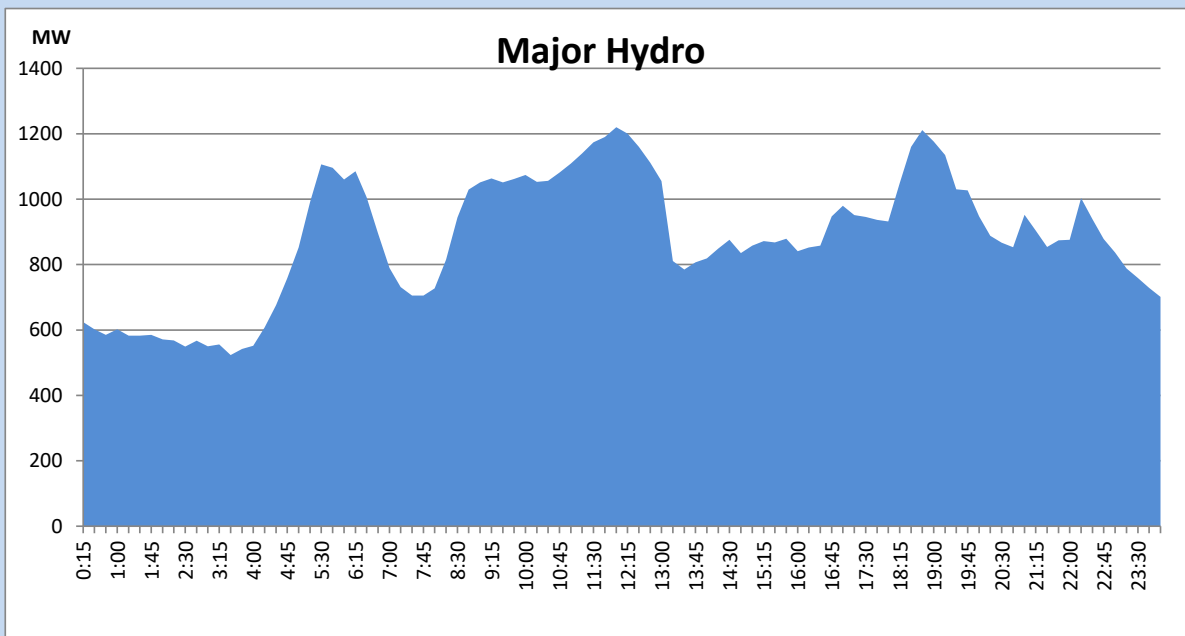
## IPP Oil Plant Generation during the Previous day

August 29, 2022



## Major Hydro Generation during the Previous day

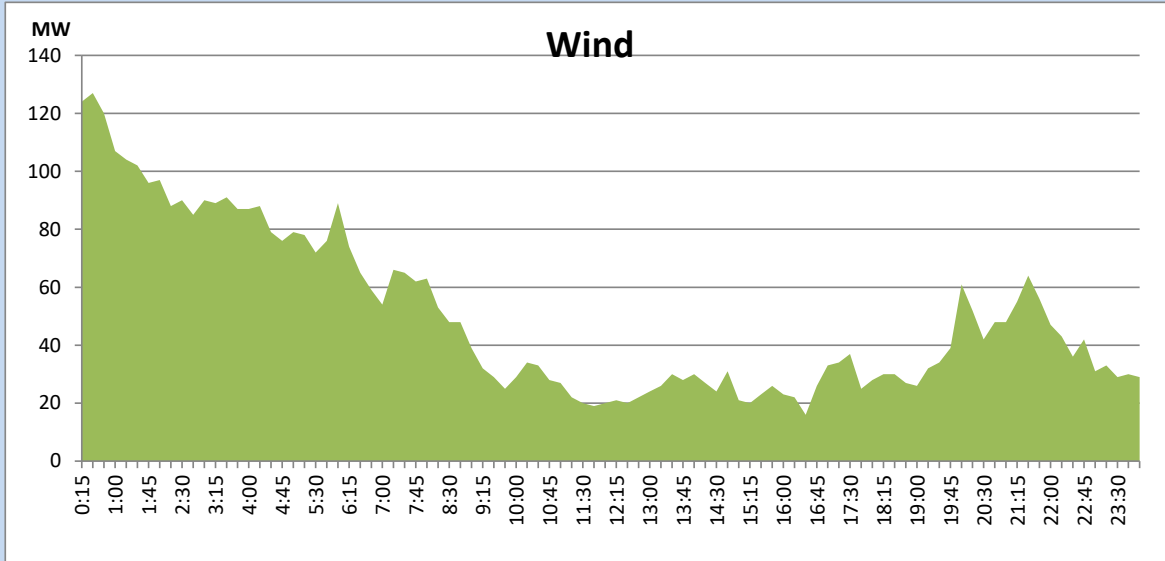
August 29, 2022



## Wind Generation during the Previous day

August 29, 2022

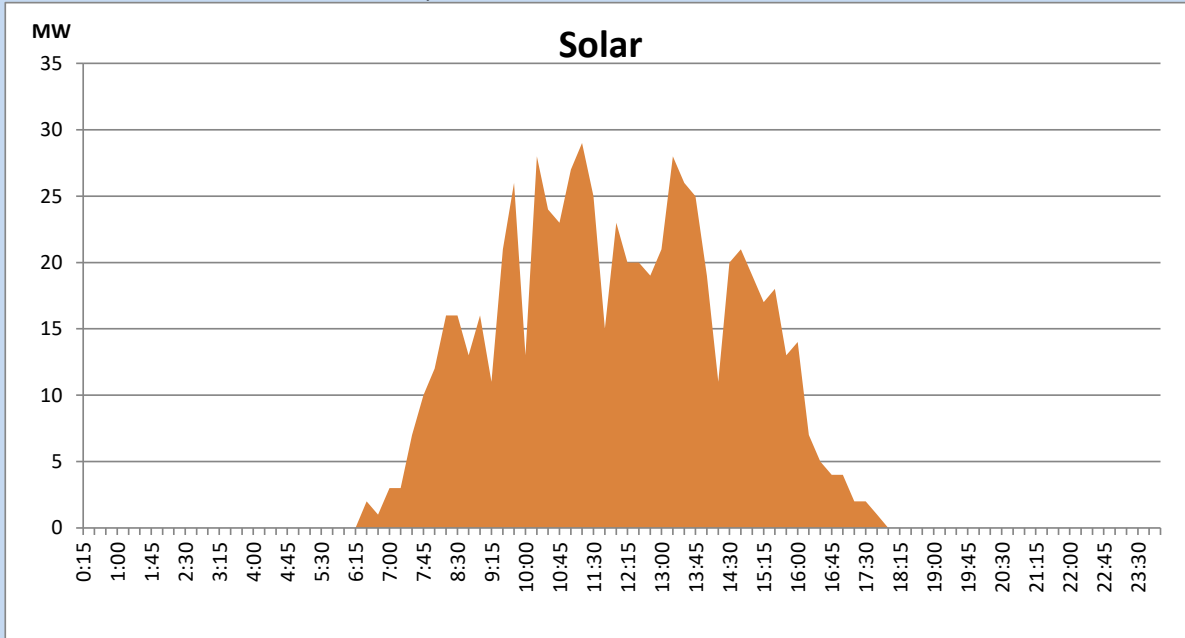
Based on Telemetered Power Stations only



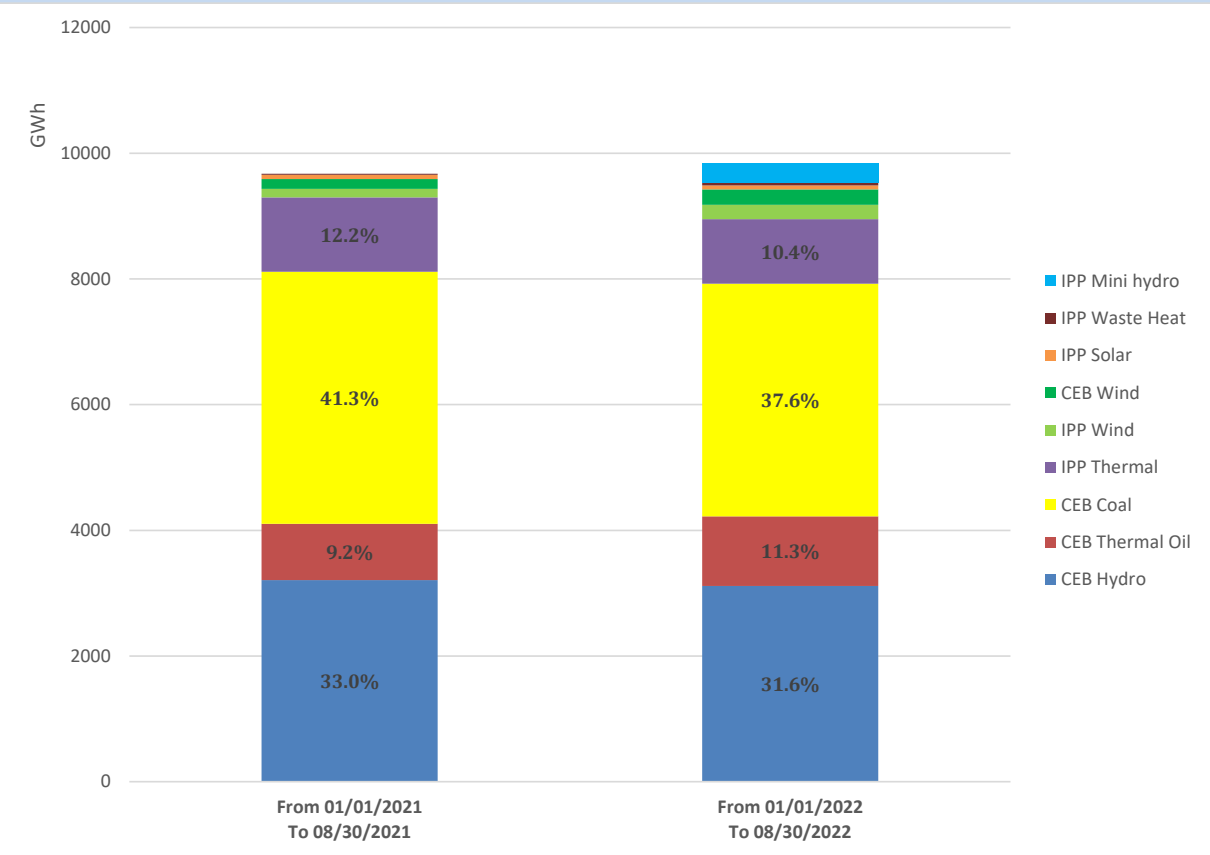
## Solar Generation during the Previous day

August 29, 2022

Based on Telemetered Power Stations only



# Cumulative Dispatch Comparison with Last Year



## Thermal Plant Fuel types

Power Station	Primary Fuel
CEB Thermal	
Sapugaskanda 1	Heavy Fuel
Sapugaskanda 2	Heavy Fuel
Kelanitissa Small Gas Turbines	Auto Diesel
GT 7 - Kelanitissa	Auto Diesel
Kelanitissa CCY	Naphtha or Diesel
Lakvijaya 1	Coal
Lakvijaya 2	Coal
Lakvijaya 3	Coal
Uthuru Janani	Heavy Fuel
Barge CEB	Heavy Fuel

Power Station	Primary Fuel
Private Thermal	
Sojitz - Kelanitissa	Auto Diesel
West Coast	Auto Diesel / Heavy Fuel
ACE Matara	Heavy Fuel
ACE Embilipitiya	Heavy Fuel

### Major Incidents during the day -as reported by CEB morning of

August 31, 2022

- 1) Rotational manual load shedding was carried out from 15:00 hrs to 22:00 hrs.
- 2) Lakvijaya-New Chilaw cct 02 tripped and A/R from both ends at 07:03 hrs due to the operation of distance protection.
- 3) Veyangoda-Kotugoda cct 01 tripped from Kotugoda end and tripped & A/R from Veyangoda end at 15:58 hrs due to the operation of differential protection. The cct was restored at 16:43 hrs.
- 4) Habarana 132/33kV T/F 02 tripped at 21:26 hrs indicating a trip signal for operation of pressure release device. The T/F is yet to be restored.