

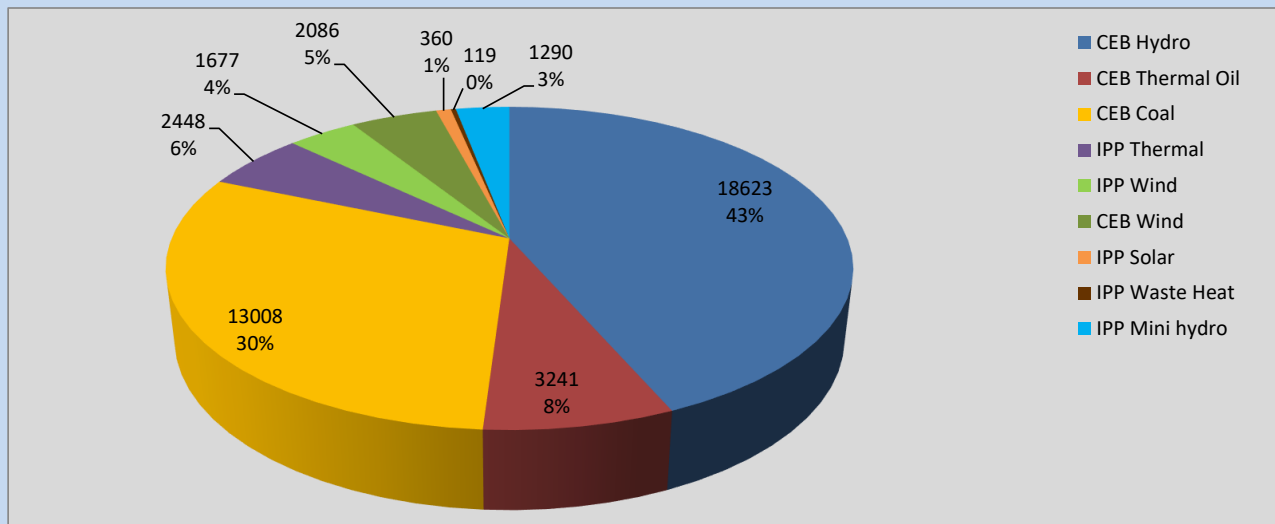
# Generation and Reservoirs Statistics

September 21, 2022



PUBLIC UTILITIES COMMISSION OF SRI LANKA

## Daily Generation Mix in MWh



**Total Generation** **42,852 MWh**

Note: Above data is excluding contribution from Roof Top Solar, 1MW Solar and certain Mini Hydro plants

## Cumulative Dispatch

Note: Following data is Excluding contribution from Roof Top Solar, 1MW solar and Mini Hydro plants

### For Current Month

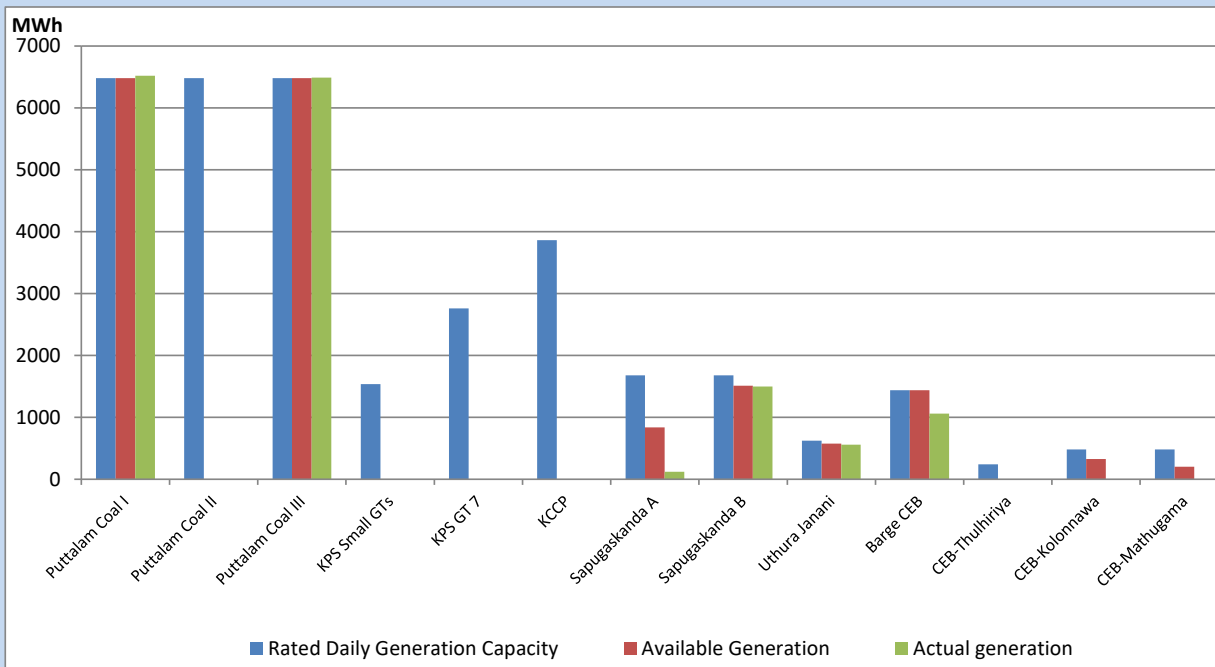
Category	Dispatch (GWh)	
CEB Hydro	406.89	49.55%
CEB Thermal Oil	26.91	3.28%
CEB Coal	238.02	28.99%
IPP Thermal	14.50	1.77%
SPP Wind	37.48	4.56%
CEB Wind	46.90	5.71%
SPP Solar	6.40	0.78%
SPP Solid Waste	4.46	0.54%
Mini Hydro	39.53	4.81%
<b>Total</b>	<b>821.09</b>	

### For Current Year

Category	Dispatch (GWh)	
CEB Hydro	3,540.6	33.07%
CEB Thermal Oil	1,139.3	10.64%
CEB Coal	3,951.1	36.91%
IPP Thermal	1,041.4	9.73%
SPP Wind	268.3	2.51%
CEB Wind	293.0	2.74%
SPP Solar	68.7	0.64%
SPP Solid Waste	53.6	0.50%
Mini Hydro	349.5	3.27%
<b>Total</b>	<b>10,705.2</b>	

## CEB owned Thermal Plant Dispatch

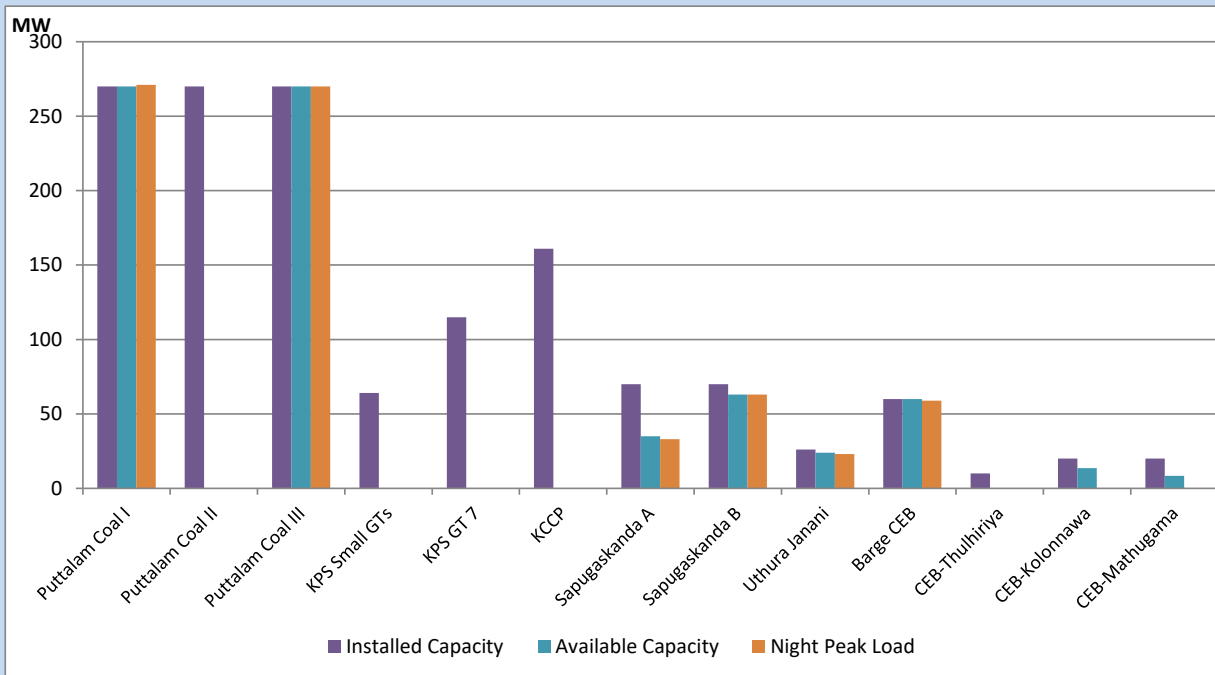
September 21, 2022



Available Generation is estimated based on plant availability at 6.00am on

September 22, 2022

## CEB owned Thermal Plant Loading at the Night Peak



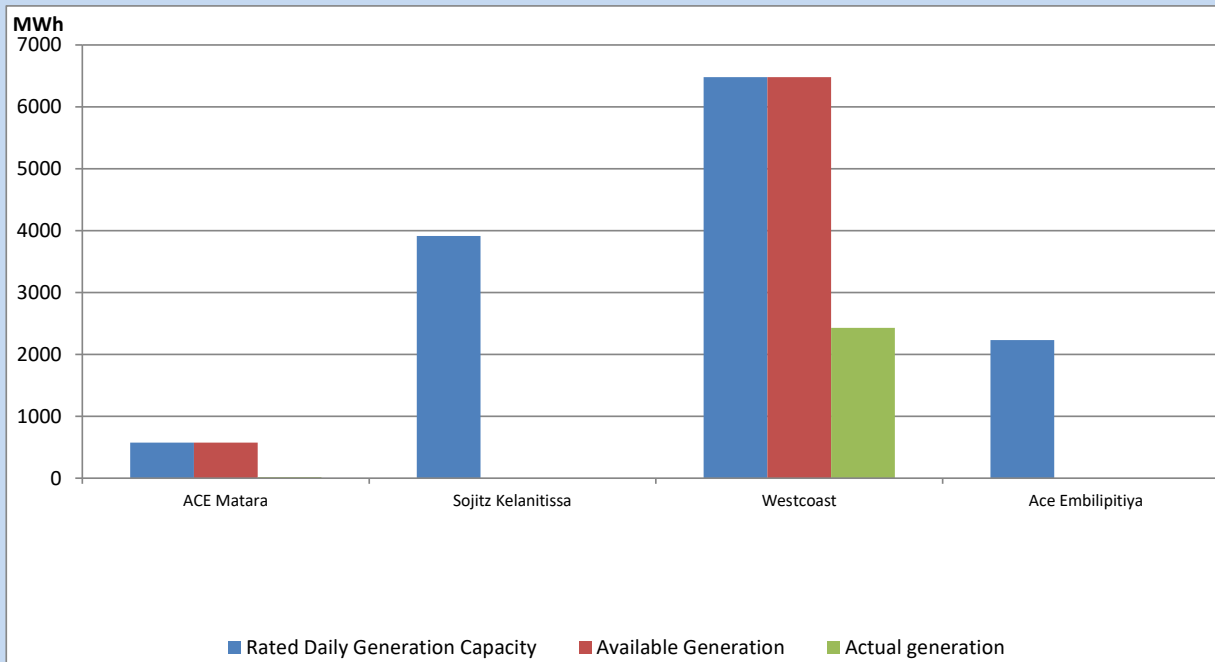
Note- Plant availability is recorded at 6.00 am on

September 22, 2022

## IPP owned Thermal Plant Dispatch

September 21, 2022

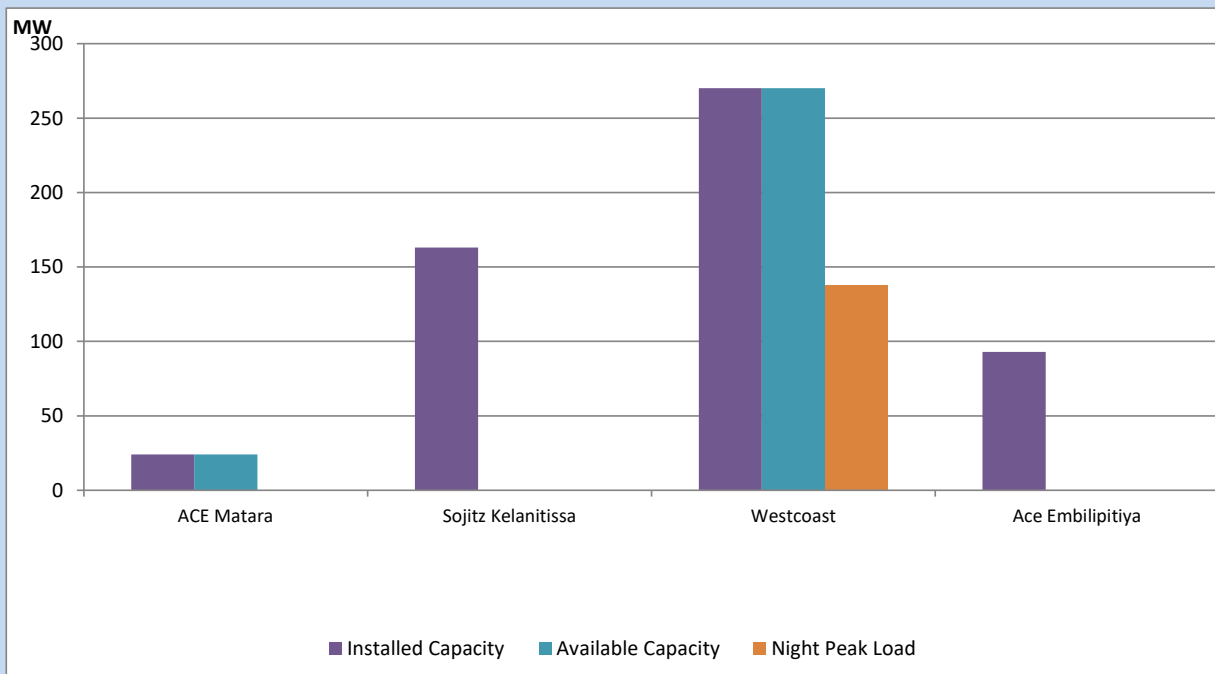
Asia Power, V Power Pallekale, Vpower Galle, V Power Horana, Vpower Hambantota, Vpower Valachchena and Altaqa Mahiyanganaya are not available due to expiration of PPAs



Available Generation is estimated based on plant availability at 6.00am on

September 22, 2022

## IPP owned Thermal Plant Loading at the Night Peak

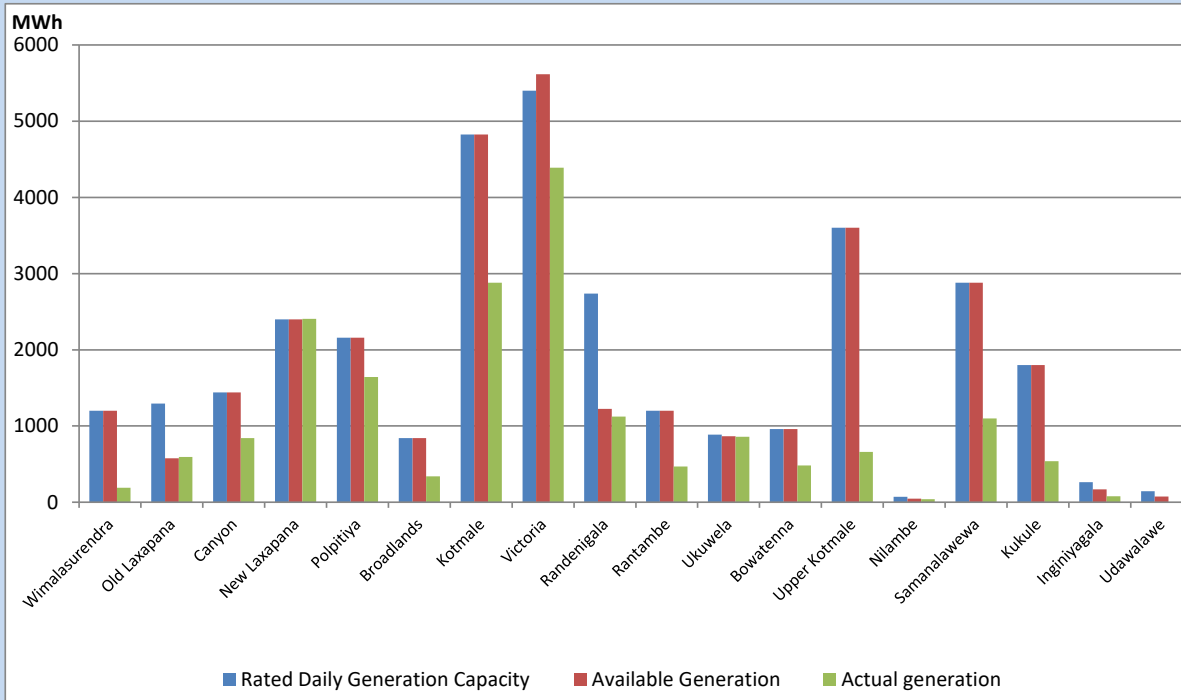


Note- Plant availability is recorded at 6.00 am on

September 22, 2022

## Major Hydro Plant Dispatch

September 21, 2022

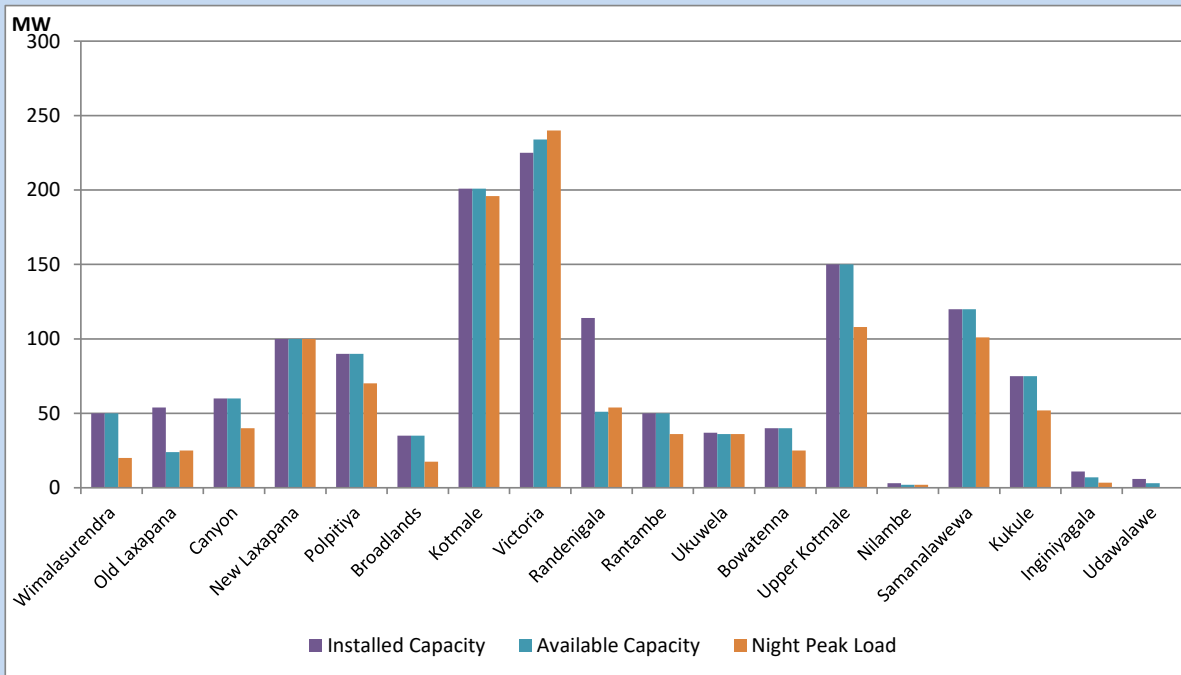


Available Generation is estimated based on plant availability at 6.00am on September 22, 2022  
 Broadlands power plant is operating in the Commissioning Stage

September 22, 2022

## Major Hydro Plant Loading at Night Peak

September 21, 2022



Note- Plant availability is recorded at 6.00 am on September 22, 2022  
 Broadlands power plant is operating in the Commissioning Stage

## Summary of Major Plant performance

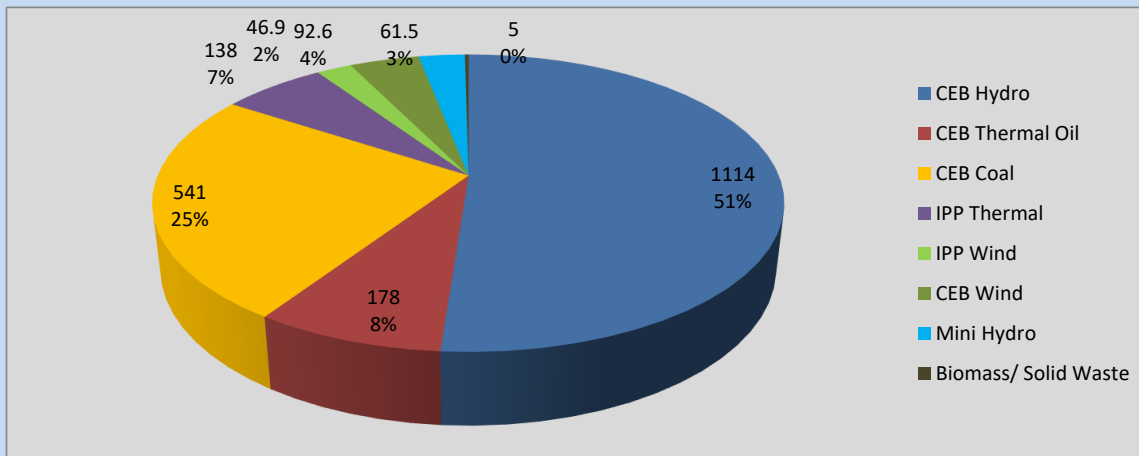
Plant	Installed Capacity	Plant Availability	Night peak Load	Plant Dispatch
	(MW)	(MW)	(MW)	(MWh)
Wimalasurendra	50	50	20	190
Old Laxapana	54	24	25	594
Canyon	60	60	40	840
New Laxapana	100	100	100	2,405
Polpitiya	90	90	70	1,644
Broadlands	35	35	18	339
Kotmale	201	201	196	2,880
Victoria	225	234	240	4,388
Randenigala	114	51	54	1,122
Rantambe	50	50	36	468
Ukuwela	37	36	36	857
Bowatenna	40	40	25	481
Upper Kotmale	150	150	108	661
Nilambe	3	2	2	38
Samanalawewa	120	120	101	1,100
Kukule	75	75	52	539
Inginiyagala	11	7	3	77
Udawalawe	6	3	0	0
Puttalam Coal I	270	270	271	6,519
Puttalam Coal II	270	0	0	0
Puttalam Coal III	270	270	270	6,489
KPS Small GTs	64	0	0	0
KPS GT 7	115	0	0	0
KCCP	161	0	0	0
Sapugaskanda A	70	35	33	123
Sapugaskanda B	70	63	63	1,497
Uthura Janani	26	24	23	561
Barge CEB	60	60	59	1,060
CEB-Thulhiriya	10	0	0	0
CEB-Kolonnawa	20	14	0	0
CEB-Mathugama	20	8	0	0
ACE Matara	24	24	0	19
Sojitz Kelanitissa	163	0	0	0
West Coast	270	270	138	2,429
ACE Embilipitiya	93	0	0	0
<b>Total</b>	<b>3,397</b>	<b>2,366</b>	<b>2,189</b>	<b>42,852</b>

Plant availability is the availability recorded at 6 am on

September 22, 2022

## Contribution to the Night Peak in MW

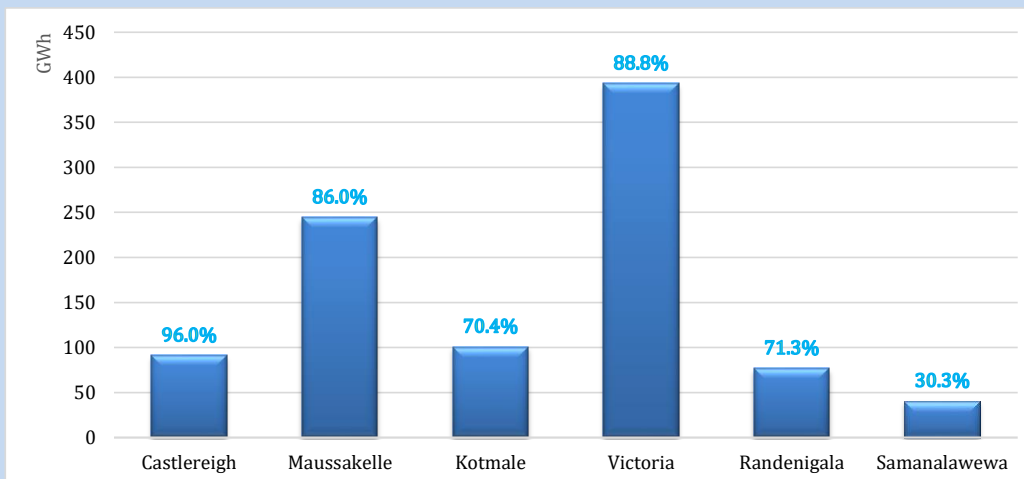
September 21, 2022



Night Peak*	2,177.3 MW
Day Peak	2,059.9 MW
Minimum Demand	1,327.5 MW

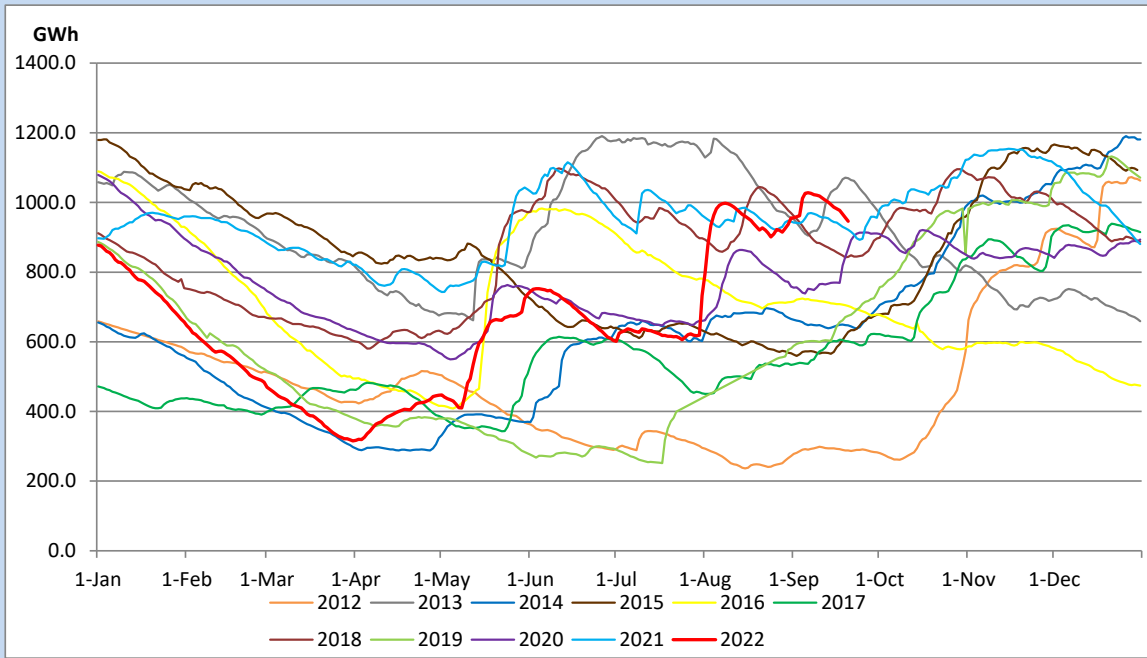
Above figures are excluding contribution from Roof Top Solar, 1MW solar, certain Wind plants and Mini Hydro plants

## Reservoir Levels - as at 06.00 Hr on September 22, 2022

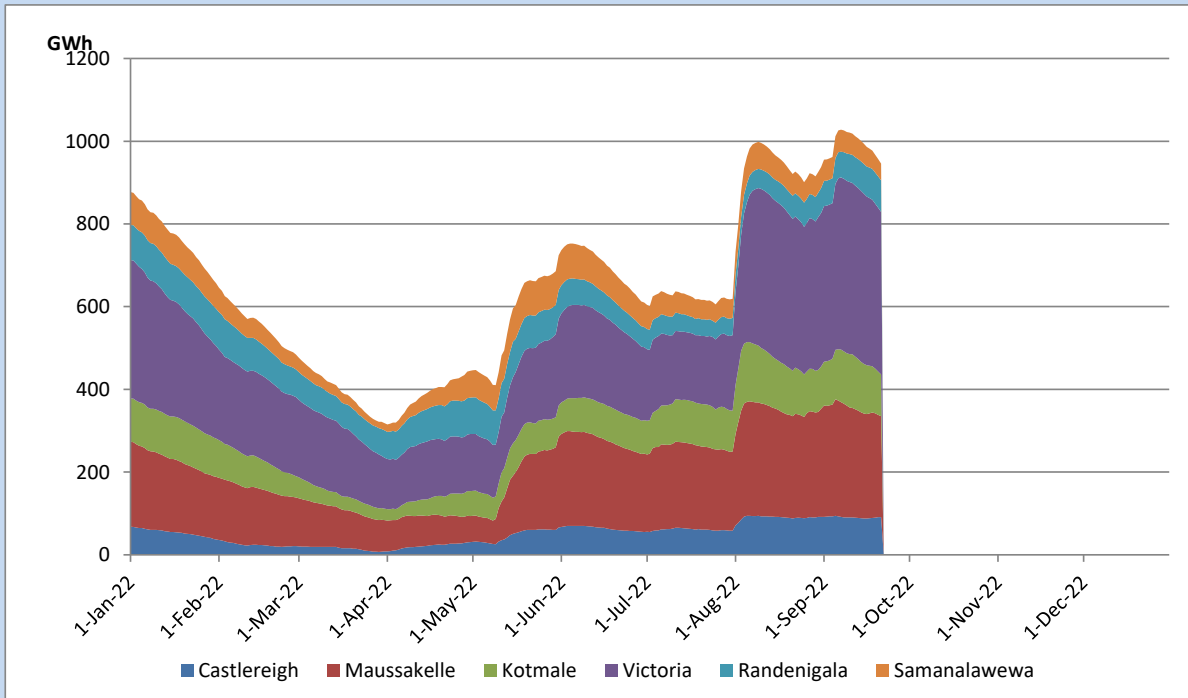


Total Reservoir Level	945.9 GWh
% of Total capacity	78.5%

## Comparison of Total Reservoir Storage Levels with Past Years

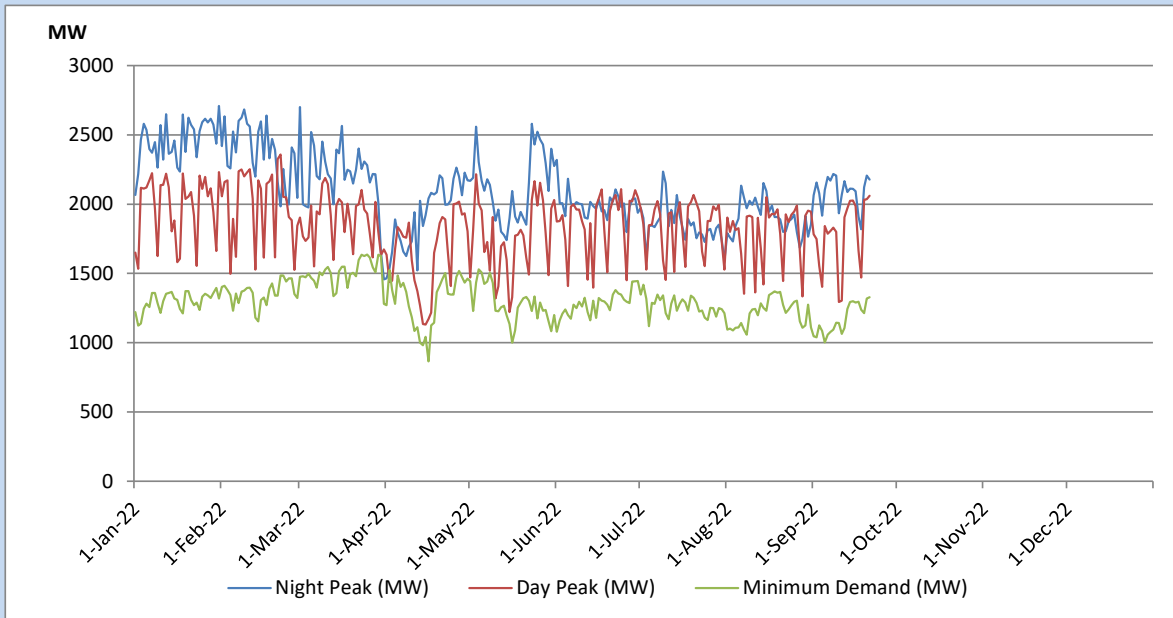


## Variation of Major Hydro Reservoir Levels in the current year (GWh)





## Variation of Demand during the current year

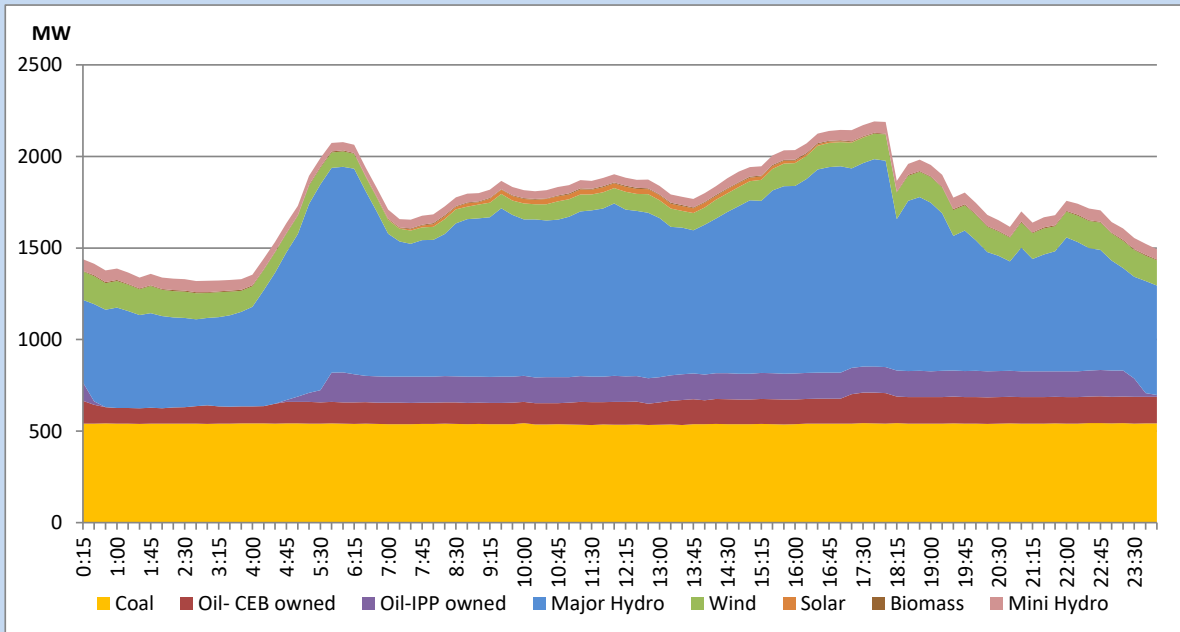


The above figures are excluding contribution from Roof Top Solar, 1MW solar, certain Wind plants and Mini Hydro plants

## Daily Load Curve of the Previous day

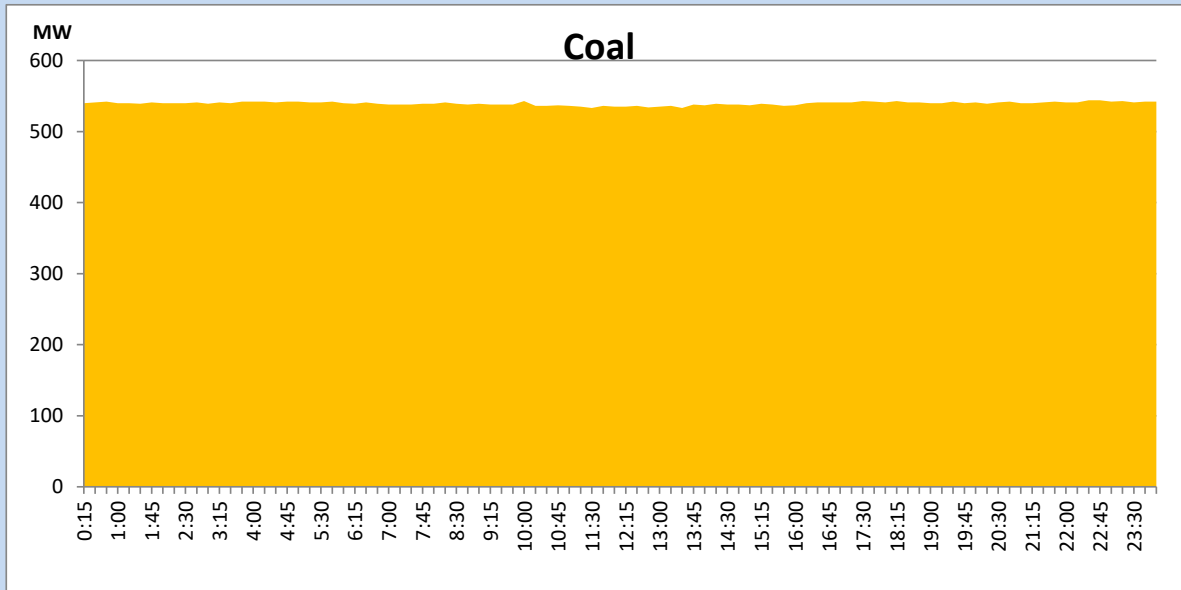
September 20, 2022

Solar and wind data is based on Telemetered Power Stations only



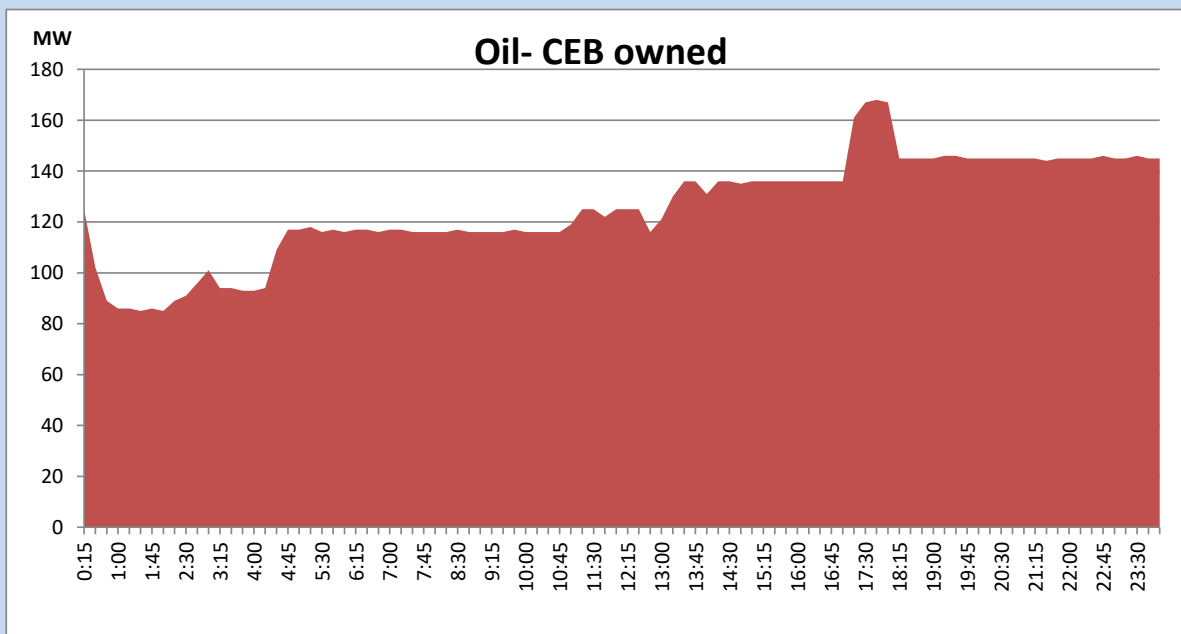
## Coal Generation during the Previous day

September 20, 2022



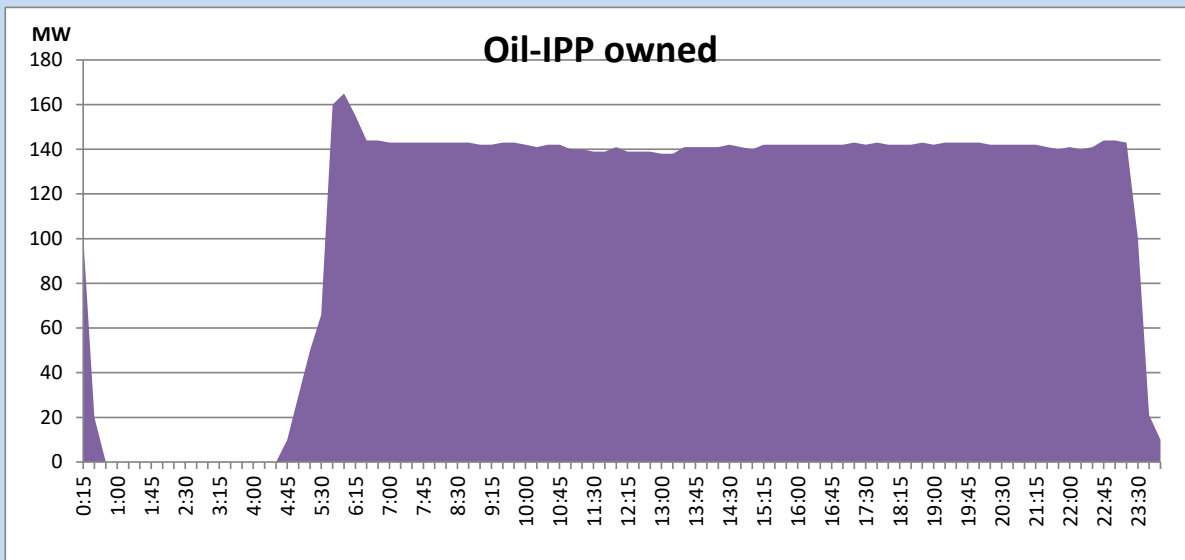
## CEB Oil Plant Generation during the Previous day

September 20, 2022



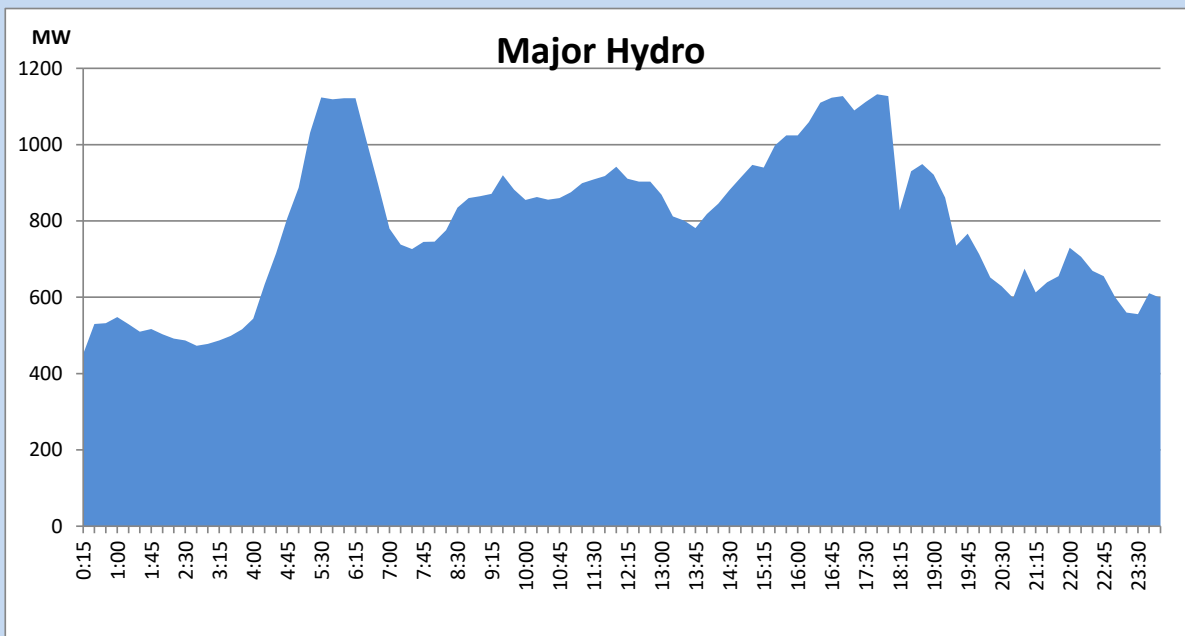
## IPP Oil Plant Generation during the Previous day

September 20, 2022



## Major Hydro Generation during the Previous day

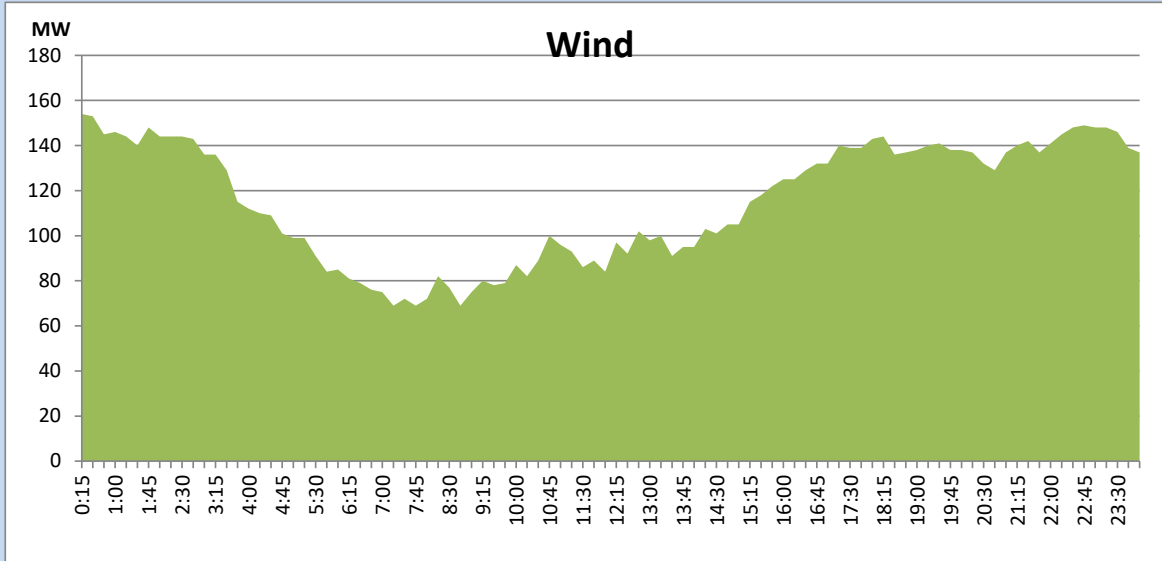
September 20, 2022



## Wind Generation during the Previous day

September 20, 2022

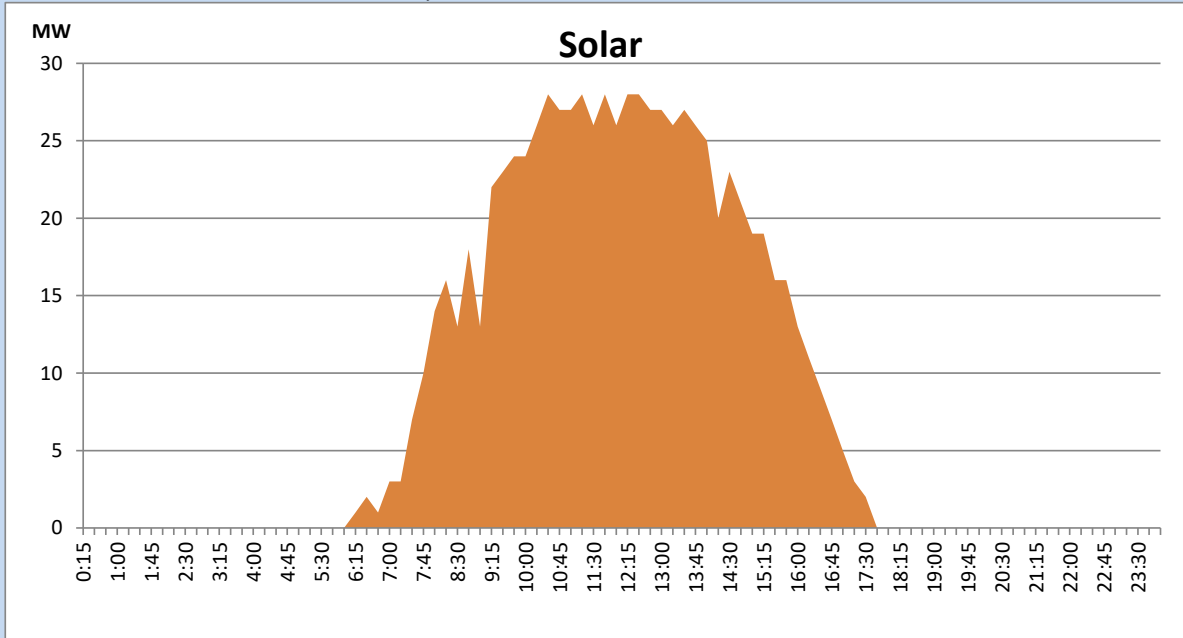
Based on Telemetered Power Stations only



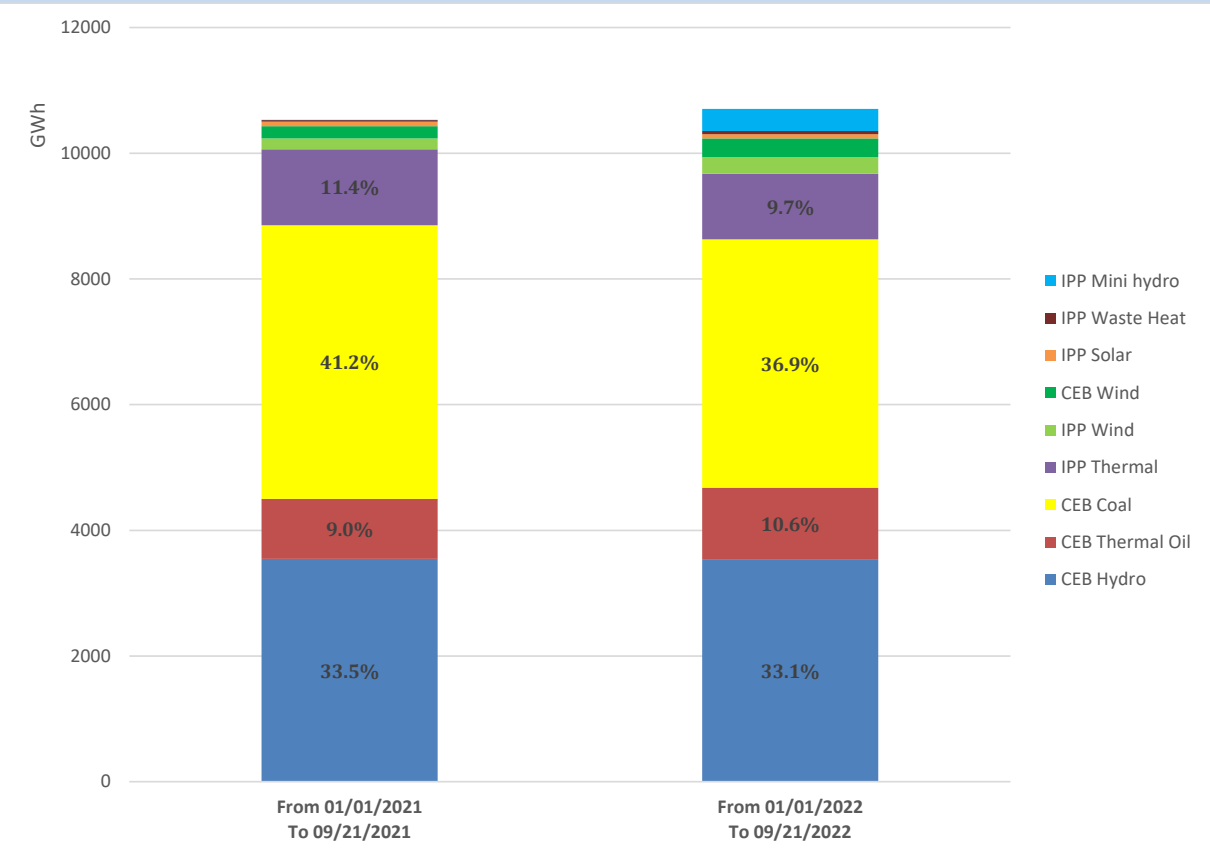
## Solar Generation during the Previous day

September 20, 2022

Based on Telemetered Power Stations only



# Cumulative Dispatch Comparison with Last Year



## Thermal Plant Fuel types

Power Station	Primary Fuel
CEB Thermal	
Sapugaskanda 1	Heavy Fuel
Sapugaskanda 2	Heavy Fuel
Kelanitissa Small Gas Turbines	Auto Diesel
GT 7 - Kelanitissa	Auto Diesel
Kelanitissa CCY	Naphtha or Diesel
Lakvijaya 1	Coal
Lakvijaya 2	Coal
Lakvijaya 3	Coal
Uthuru Janani	Heavy Fuel
Barge CEB	Heavy Fuel

Power Station	Primary Fuel
Private Thermal	
Sojitz - Kelanitissa	Auto Diesel
West Coast	Auto Diesel / Heavy Fuel
ACE Matara	Heavy Fuel
ACE Embilipitiya	Heavy Fuel

## Major Incidents during the day -as reported by CEB morning of

September 22, 2022

- 1) Rotational manual load shedding was carried out from 18:00hrs to 22:00hrs.