

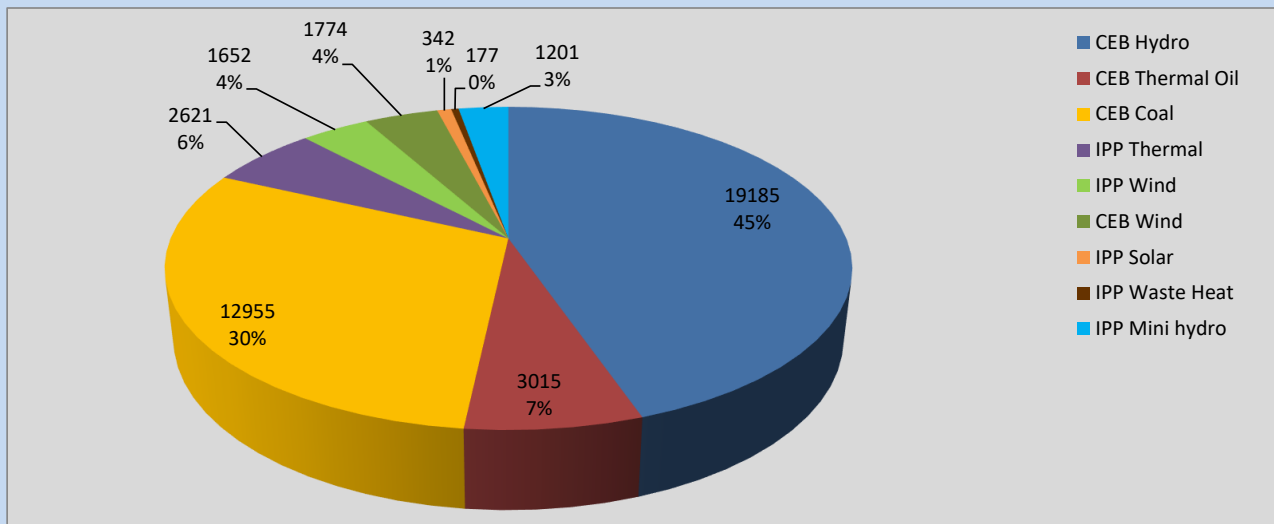
Generation and Reservoirs Statistics

September 20, 2022



PUBLIC UTILITIES COMMISSION OF SRI LANKA

Daily Generation Mix in MWh



Total Generation **42,922 MWh**

Note: Above data is excluding contribution from Roof Top Solar, 1MW Solar and certain Mini Hydro plants

Cumulative Dispatch

Note: Following data is Excluding contribution from Roof Top Solar, 1MW solar and Mini Hydro plants

For Current Month

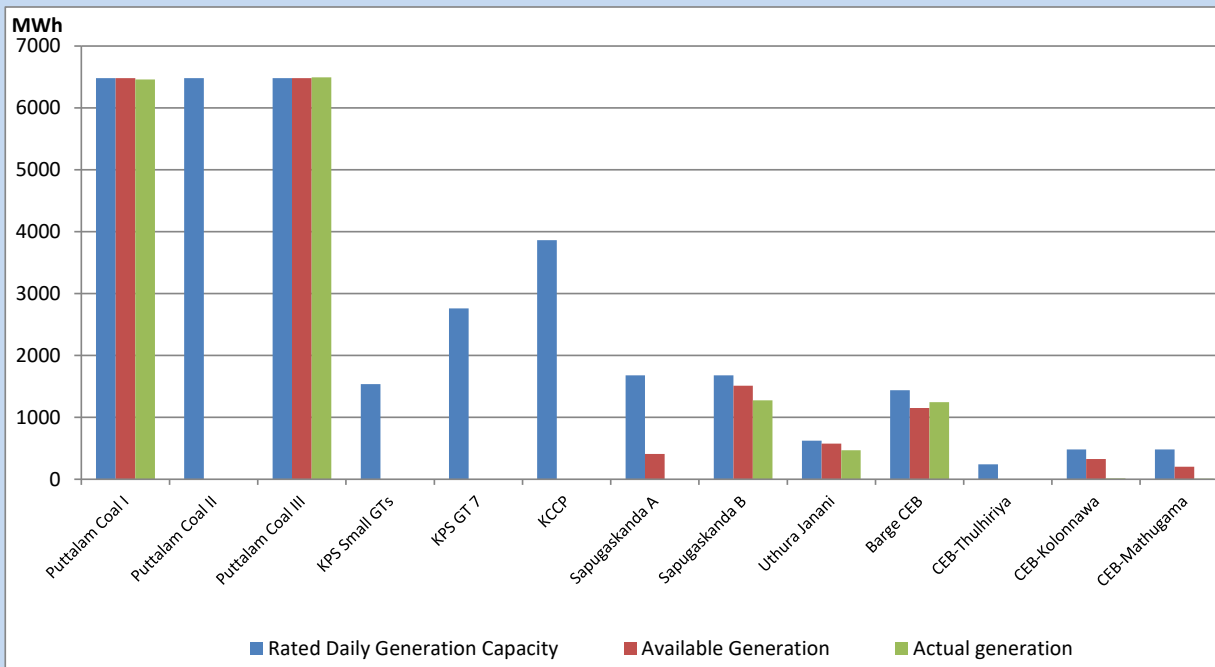
Category	Dispatch (GWh)	
CEB Hydro	388.26	49.90%
CEB Thermal Oil	23.52	3.02%
CEB Coal	225.01	28.92%
IPP Thermal	12.05	1.55%
SPP Wind	35.80	4.60%
CEB Wind	44.81	5.76%
SPP Solar	6.04	0.78%
SPP Solid Waste	4.34	0.56%
Mini Hydro	38.24	4.91%
Total	778.07	

For Current Year

Category	Dispatch (GWh)	
CEB Hydro	3,522.0	33.03%
CEB Thermal Oil	1,135.9	10.65%
CEB Coal	3,938.1	36.94%
IPP Thermal	1,039.0	9.74%
SPP Wind	266.6	2.50%
CEB Wind	290.9	2.73%
SPP Solar	68.3	0.64%
SPP Solid Waste	53.5	0.50%
Mini Hydro	348.3	3.27%
Total	10,662.2	

CEB owned Thermal Plant Dispatch

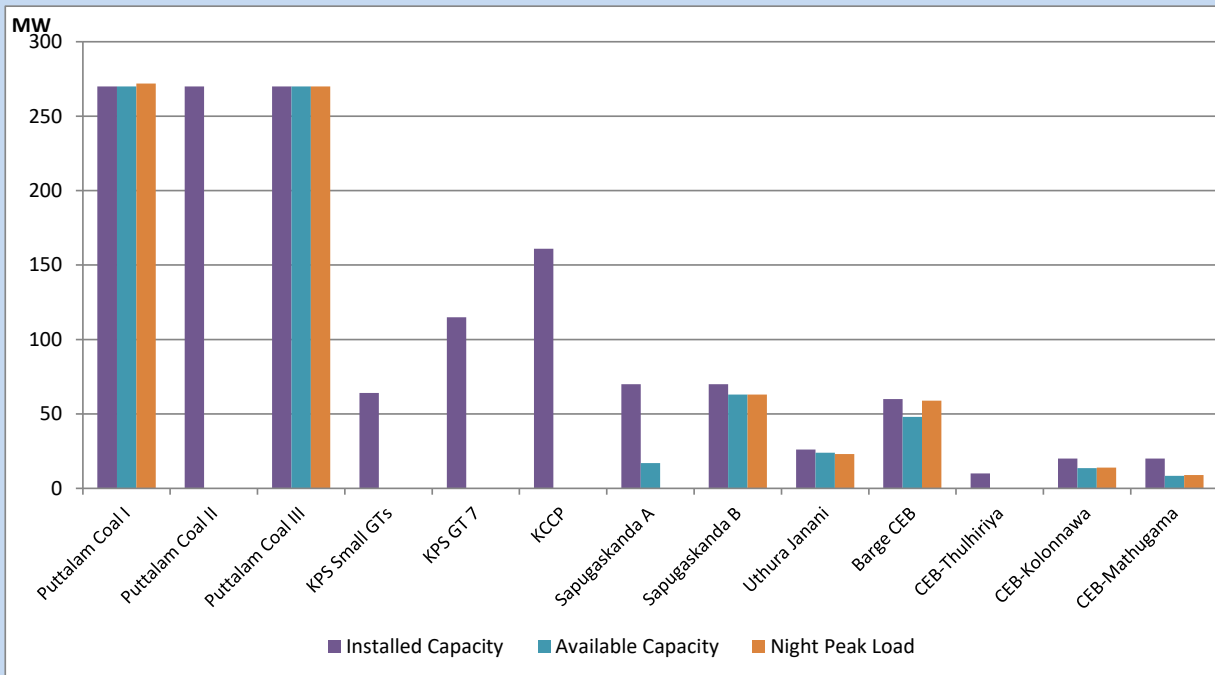
September 20, 2022



Available Generation is estimated based on plant availability at 6.00am on

September 21, 2022

CEB owned Thermal Plant Loading at the Night Peak



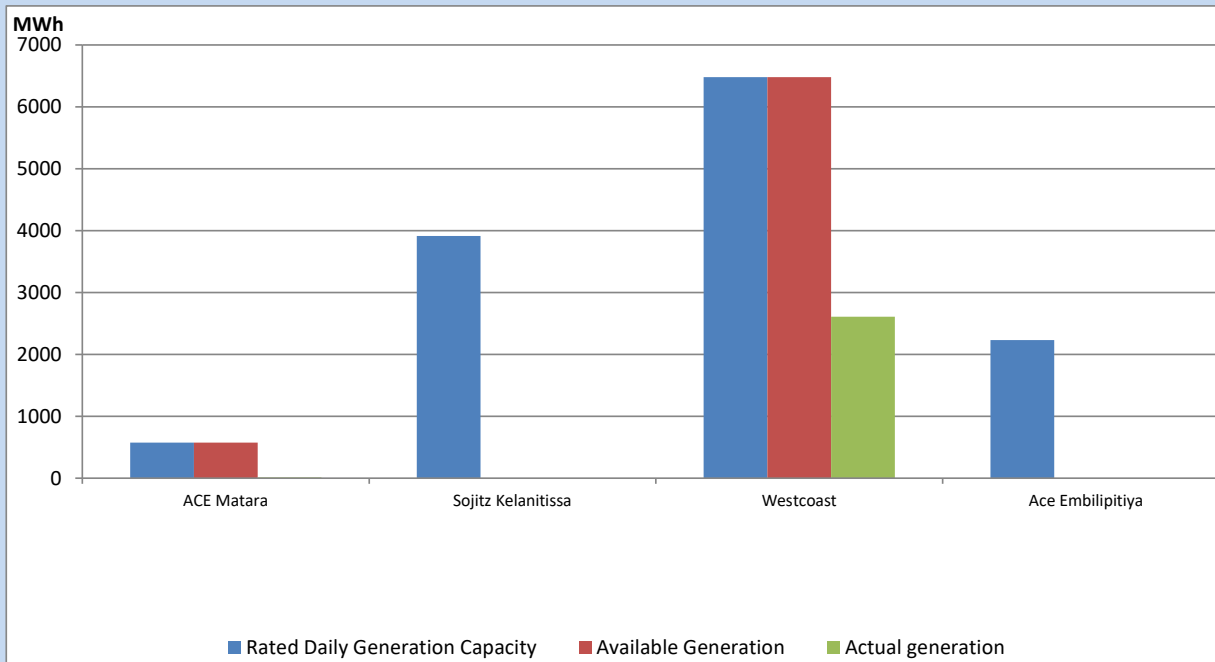
Note- Plant availability is recorded at 6.00 am on

September 21, 2022

IPP owned Thermal Plant Dispatch

September 20, 2022

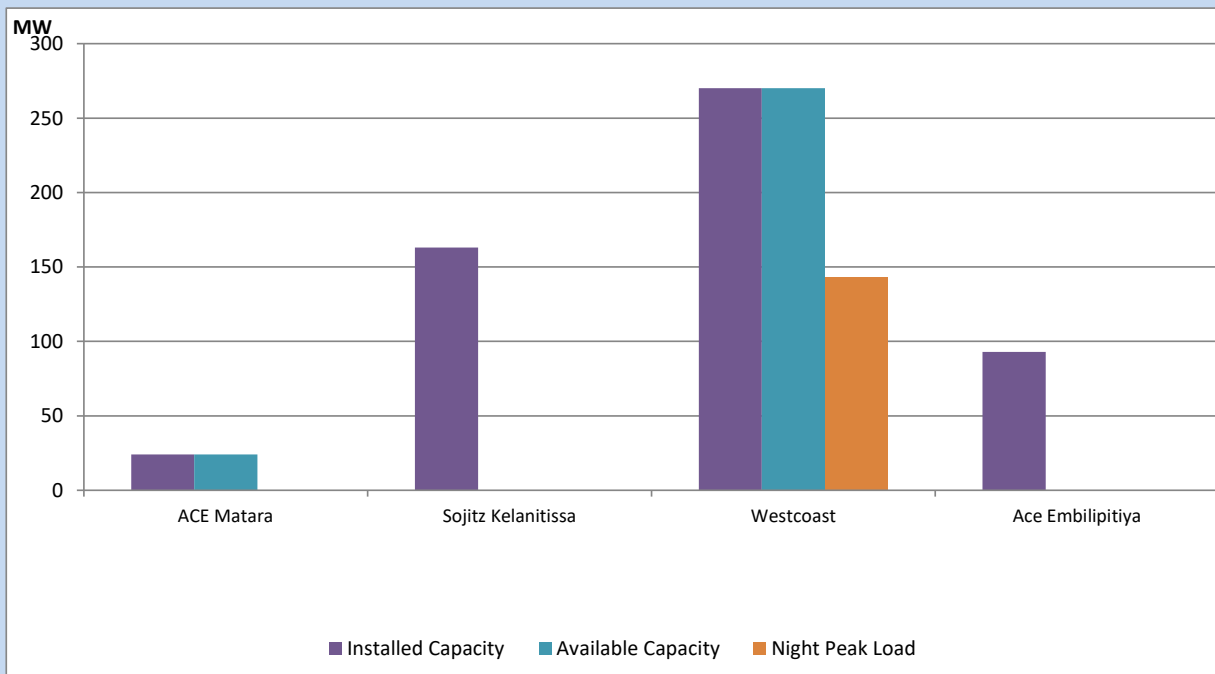
Asia Power, V Power Pallekale, Vpower Galle, V Power Horana, Vpower Hambantota, Vpower Valachchena and Altaqa Mahiyanganaya are not available due to expiration of PPAs



Available Generation is estimated based on plant availability at 6.00am on

September 21, 2022

IPP owned Thermal Plant Loading at the Night Peak

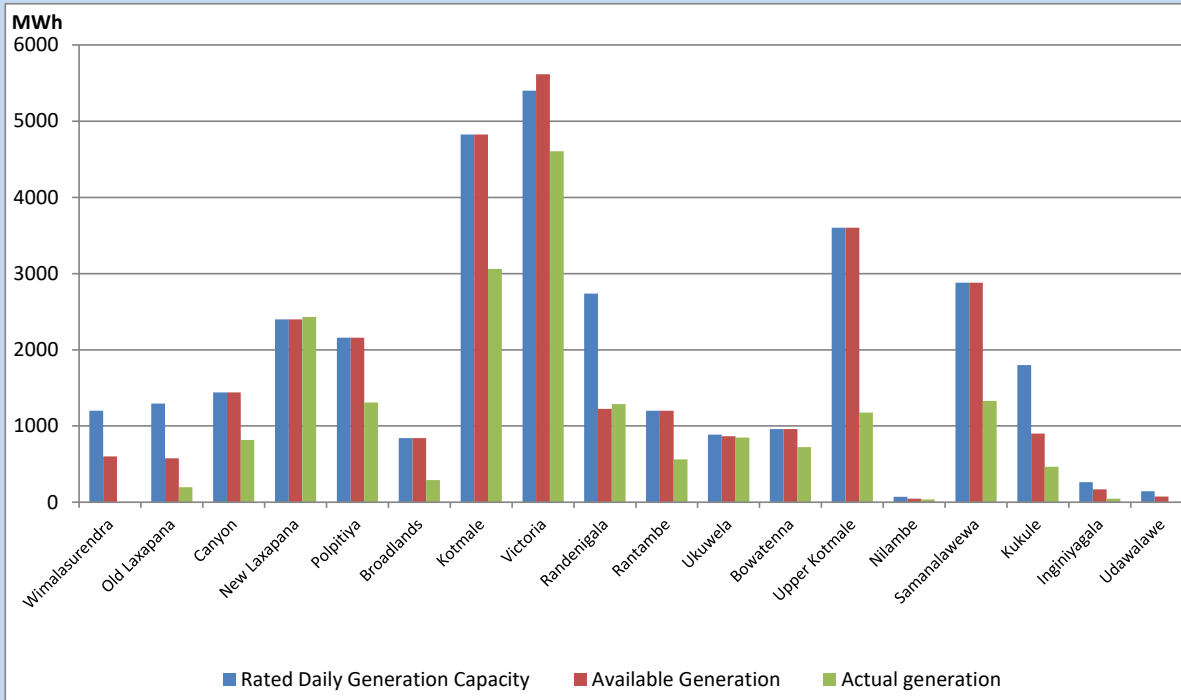


Note- Plant availability is recorded at 6.00 am on

September 21, 2022

Major Hydro Plant Dispatch

September 20, 2022

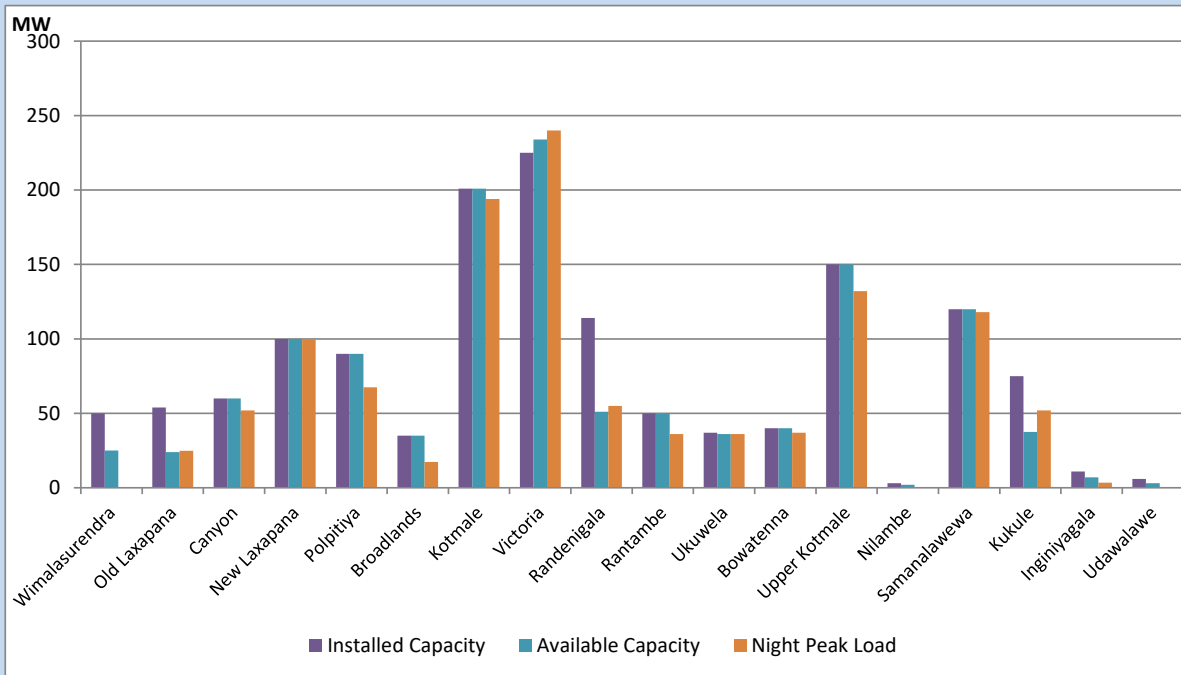


Available Generation is estimated based on plant availability at 6.00am on
Broadlands power plant is operating in the Commissioning Stage

September 21, 2022

Major Hydro Plant Loading at Night Peak

September 20, 2022



Note- Plant availability is recorded at 6.00 am on
Broadlands power plant is operating in the Commissioning Stage

September 21, 2022

Summary of Major Plant performance

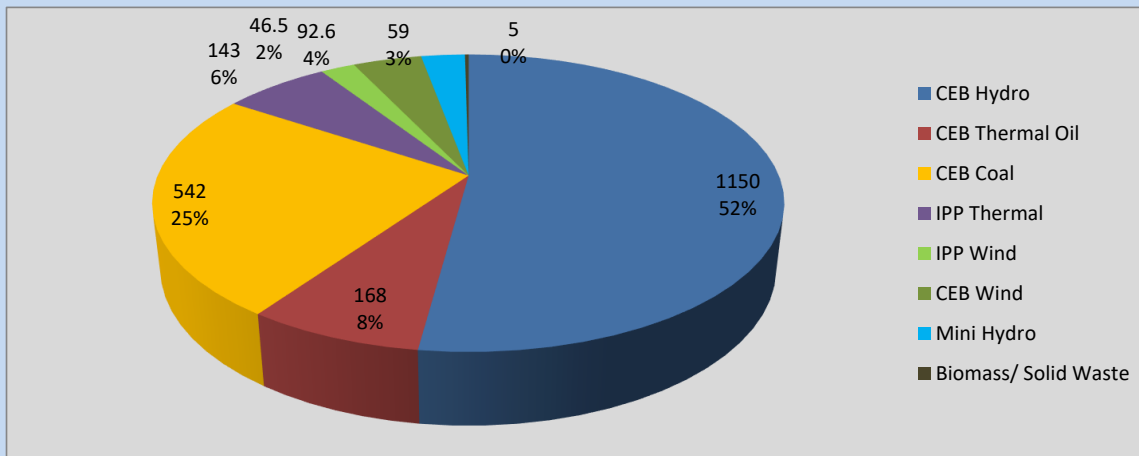
Plant	Installed Capacity	Plant Availability	Night peak Load	Plant Dispatch
	(MW)	(MW)	(MW)	(MWh)
Wimalasurendra	50	25	0	0
Old Laxapana	54	24	25	197
Canyon	60	60	52	817
New Laxapana	100	100	100	2,432
Polpitiya	90	90	68	1,308
Broadlands	35	35	17	291
Kotmale	201	201	194	3,060
Victoria	225	234	240	4,606
Randenigala	114	51	55	1,289
Rantambe	50	50	36	561
Ukuwela	37	36	36	847
Bowatenna	40	40	37	723
Upper Kotmale	150	150	132	1,177
Nilambe	3	2	0	35
Samanalawewa	120	120	118	1,329
Kukule	75	38	52	465
Inginiyagala	11	7	3	48
Udawalawe	6	3	0	0
Puttalam Coal I	270	270	272	6,459
Puttalam Coal II	270	0	0	0
Puttalam Coal III	270	270	270	6,496
KPS Small GTs	64	0	0	0
KPS GT 7	115	0	0	0
KCCP	161	0	0	0
Sapugaskanda A	70	17	0	0
Sapugaskanda B	70	63	63	1,277
Uthura Janani	26	24	23	470
Barge CEB	60	48	59	1,247
CEB-Thulhiriya	10	0	0	0
CEB-Kolonnawa	20	14	14	13
CEB-Mathugama	20	8	9	8
ACE Matara	24	24	0	13
Sojitz Kelanitissa	163	0	0	0
West Coast	270	270	143	2,608
ACE Embilipitiya	93	0	0	0
Total	3,397	2,274	2,221	42,922

Plant availability is the availability recorded at 6 am on

September 21, 2022

Contribution to the Night Peak in MW

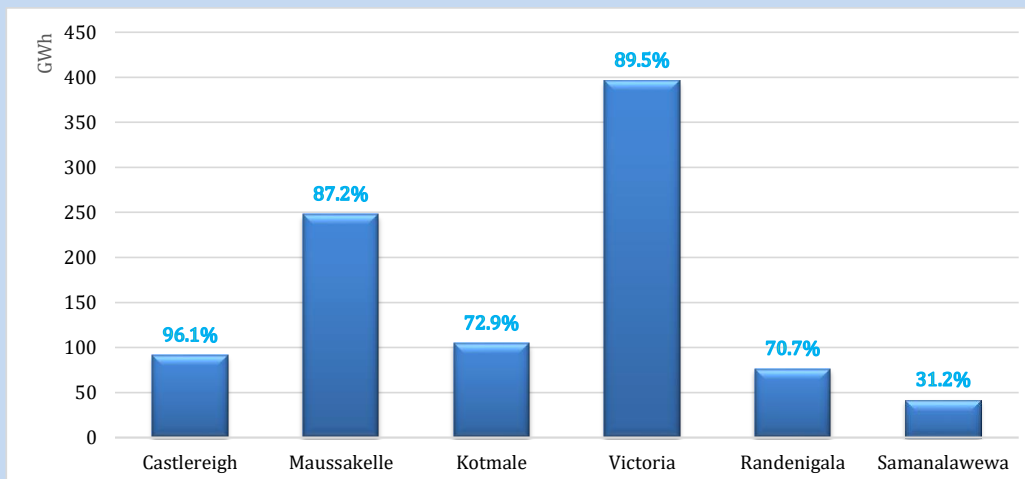
September 20, 2022



Night Peak*	2,206.1 MW
Day Peak	2,034.8 MW
Minimum Demand	1,318.9 MW

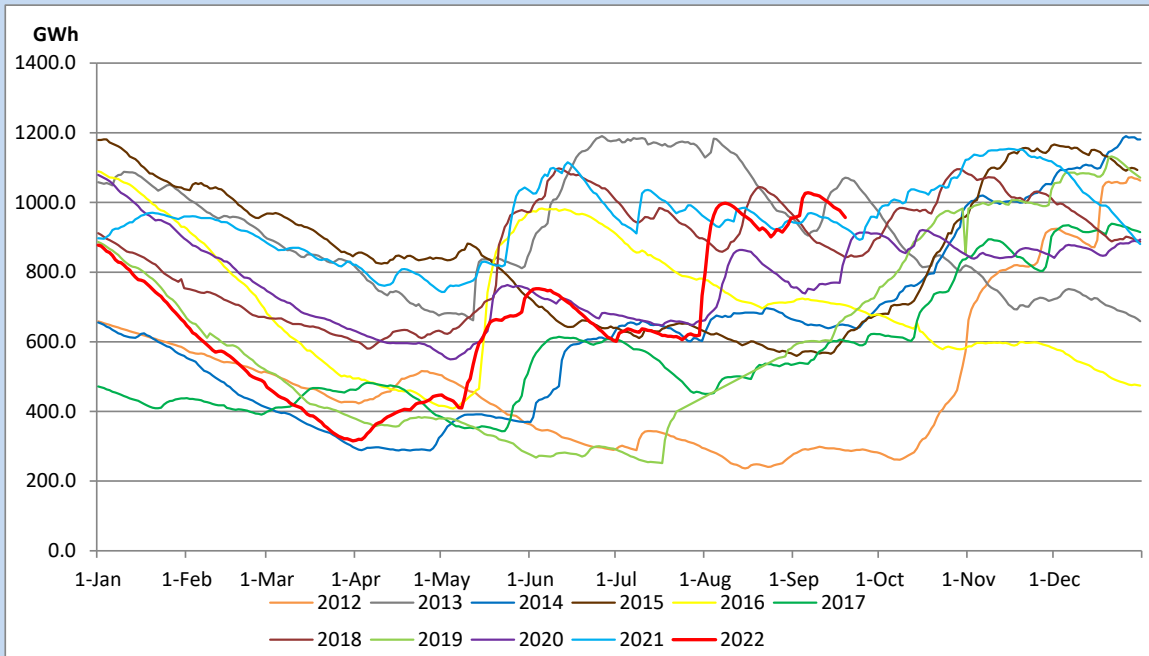
Above figures are excluding contribution from Roof Top Solar, 1MW solar, certain Wind plants and Mini Hydro plants

Reservoir Levels - as at 06.00 Hr on September 21, 2022

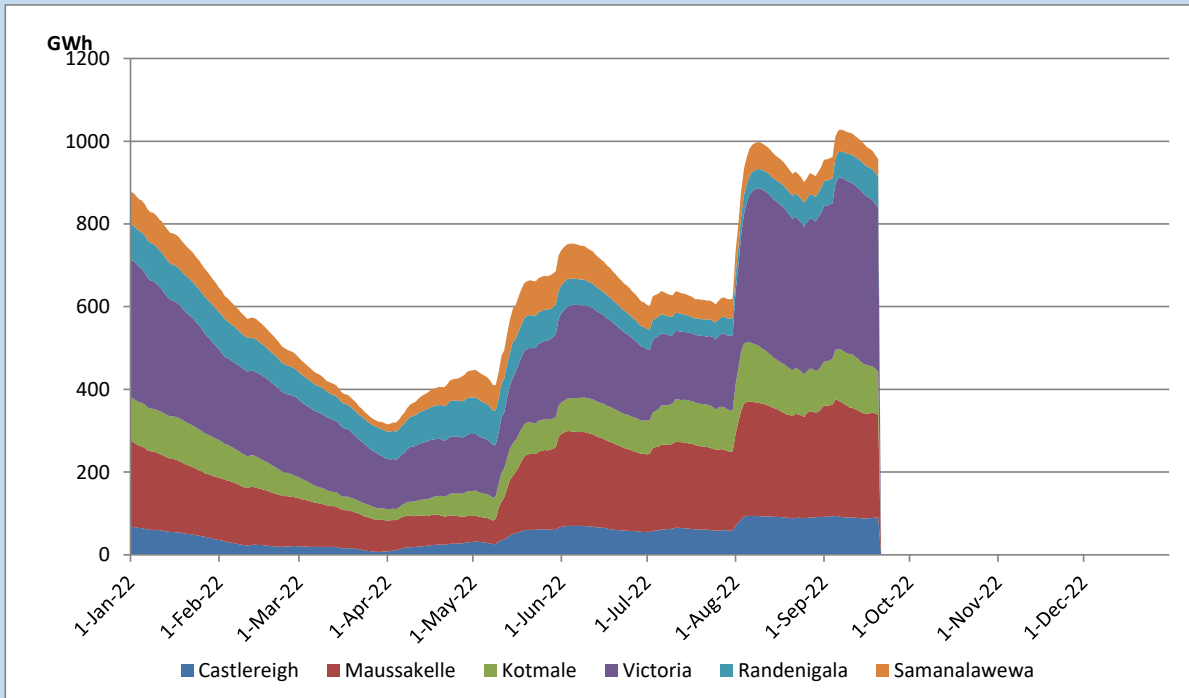


Total Reservoir Level	956.7 GWh
% of Total capacity	79.4%

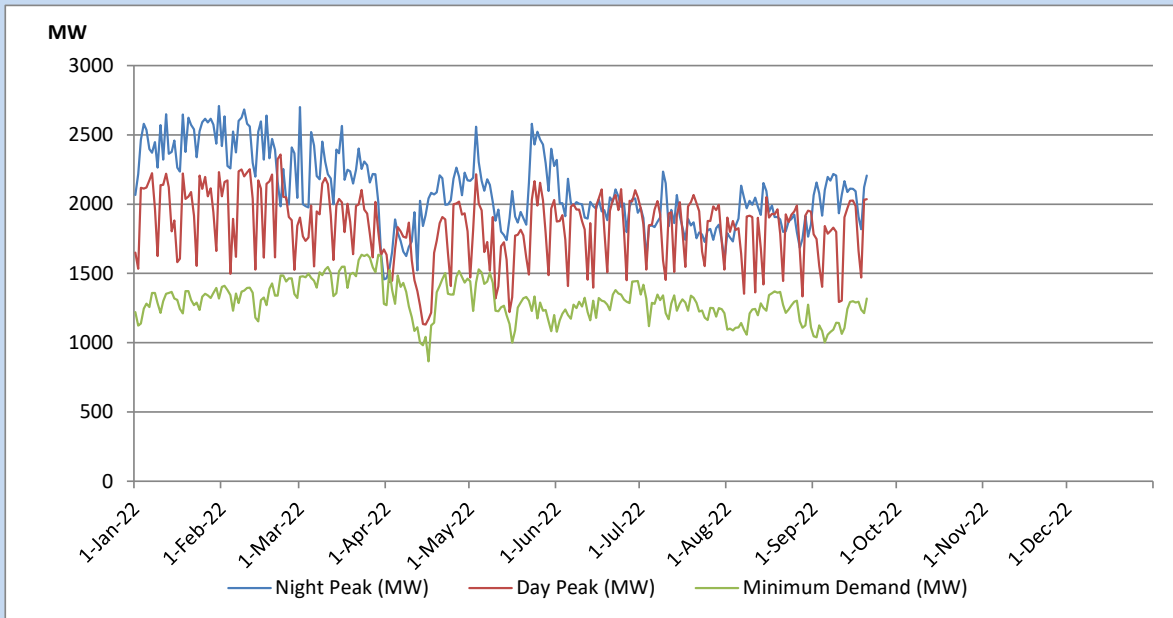
Comparison of Total Reservoir Storage Levels with Past Years



Variation of Major Hydro Reservoir Levels in the current year (GWh)



Variation of Demand during the current year

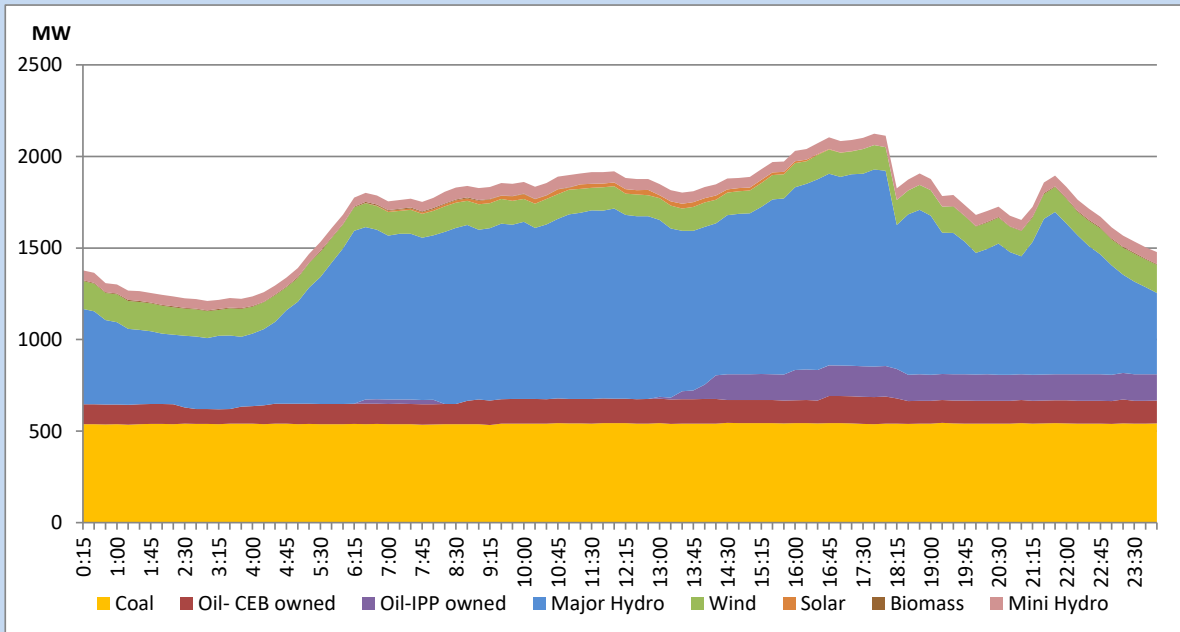


The above figures are excluding contribution from Roof Top Solar, 1MW solar, certain Wind plants and Mini Hydro plants

Daily Load Curve of the Previous day

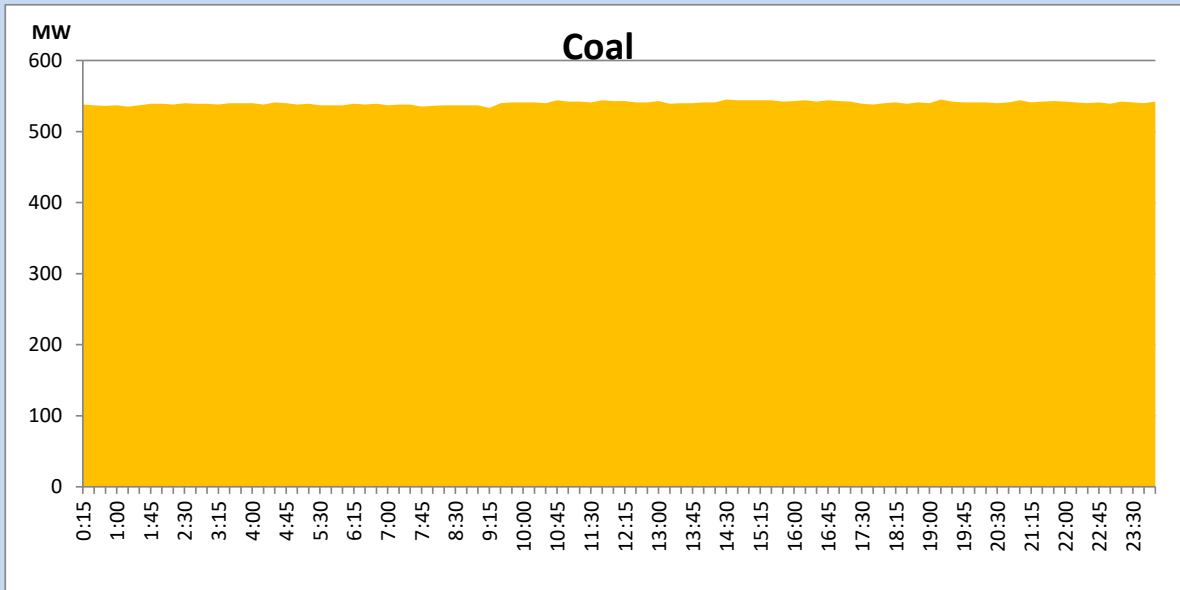
September 19, 2022

Solar and wind data is based on Telemetered Power Stations only



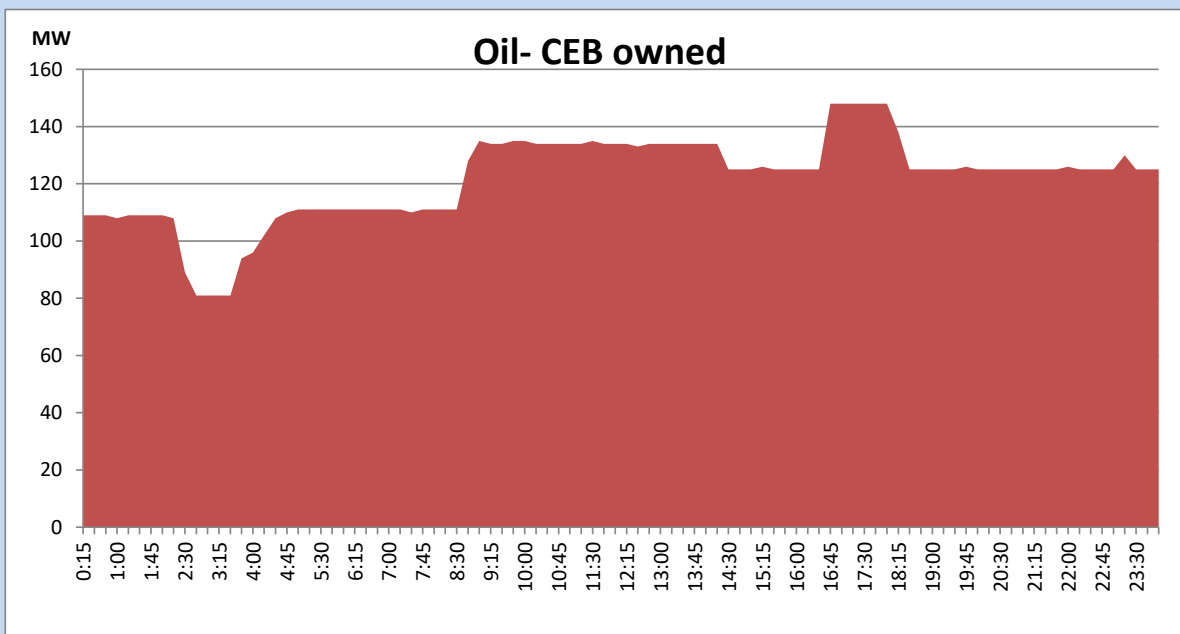
Coal Generation during the Previous day

September 19, 2022



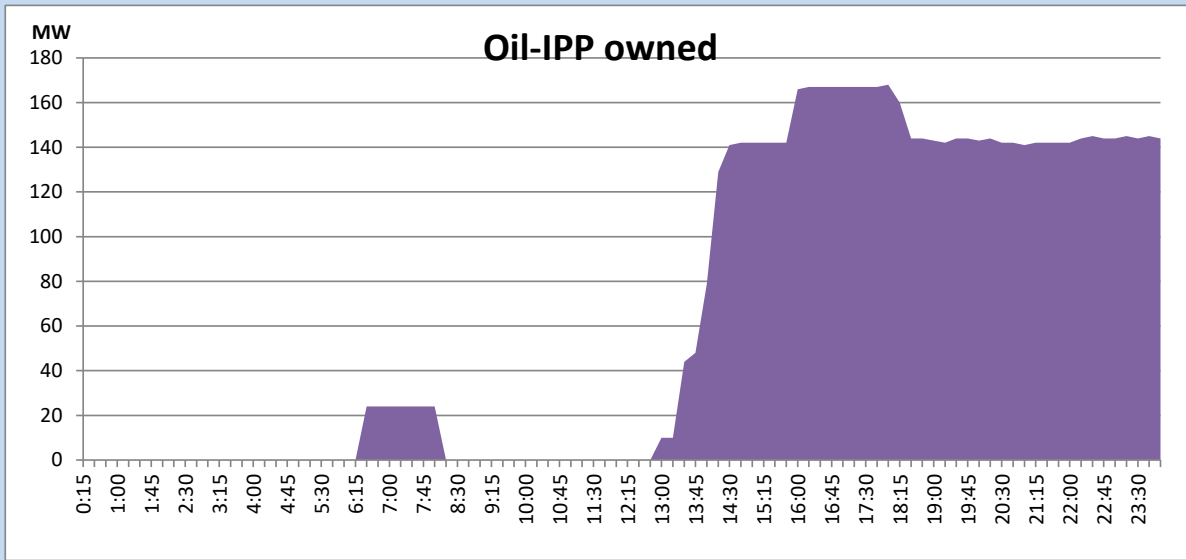
CEB Oil Plant Generation during the Previous day

September 19, 2022



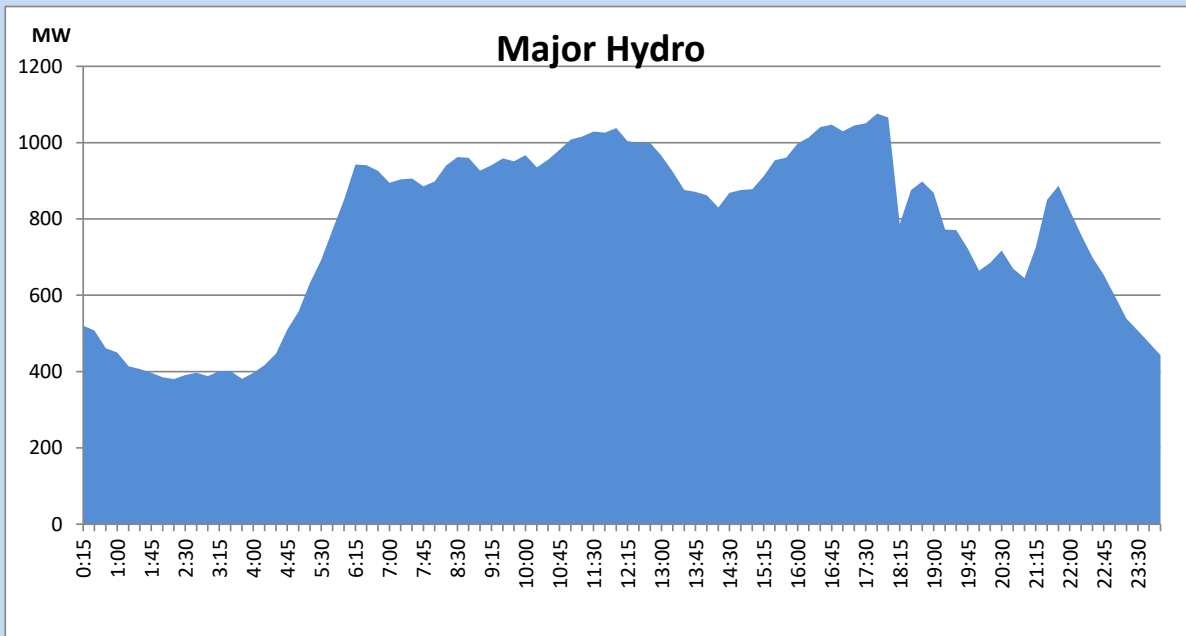
IPP Oil Plant Generation during the Previous day

September 19, 2022



Major Hydro Generation during the Previous day

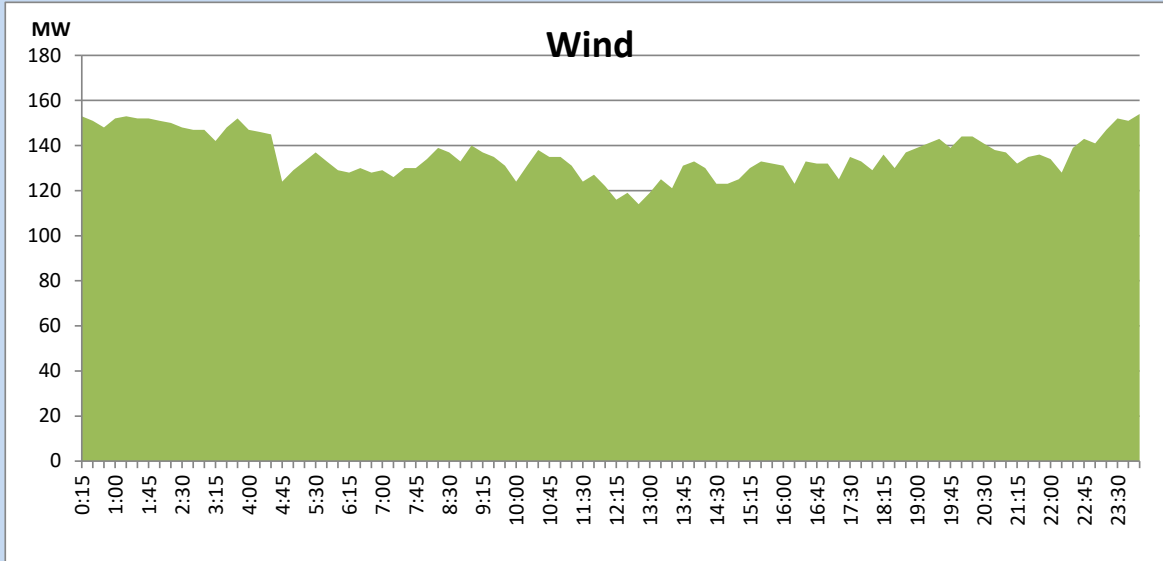
September 19, 2022



Wind Generation during the Previous day

September 19, 2022

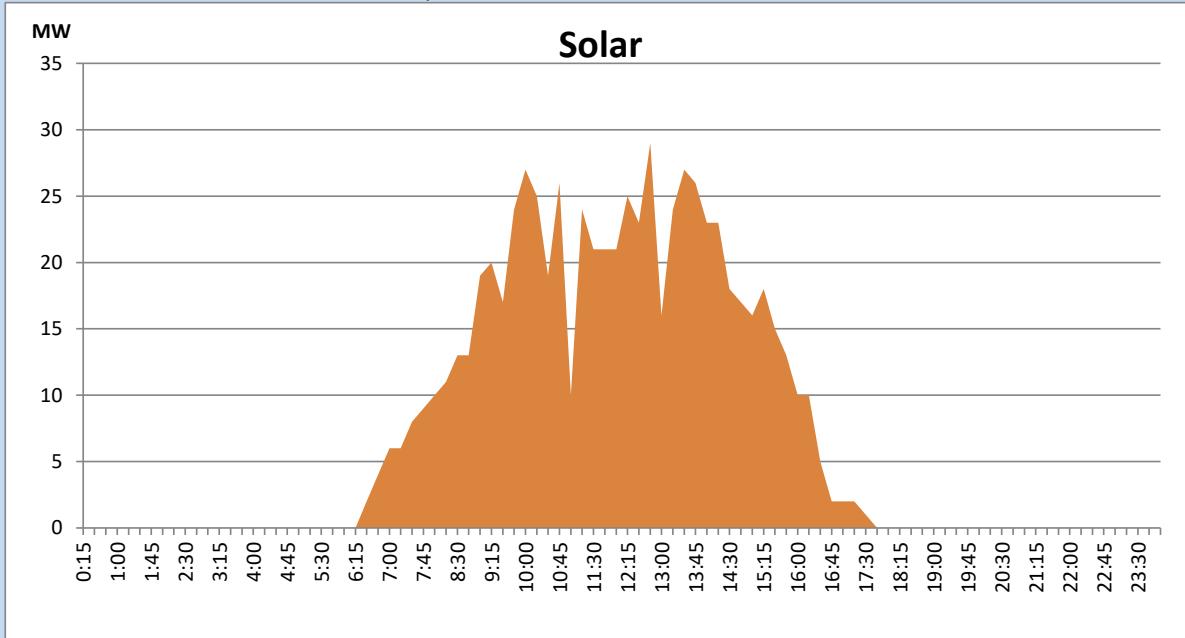
Based on Telemetered Power Stations only



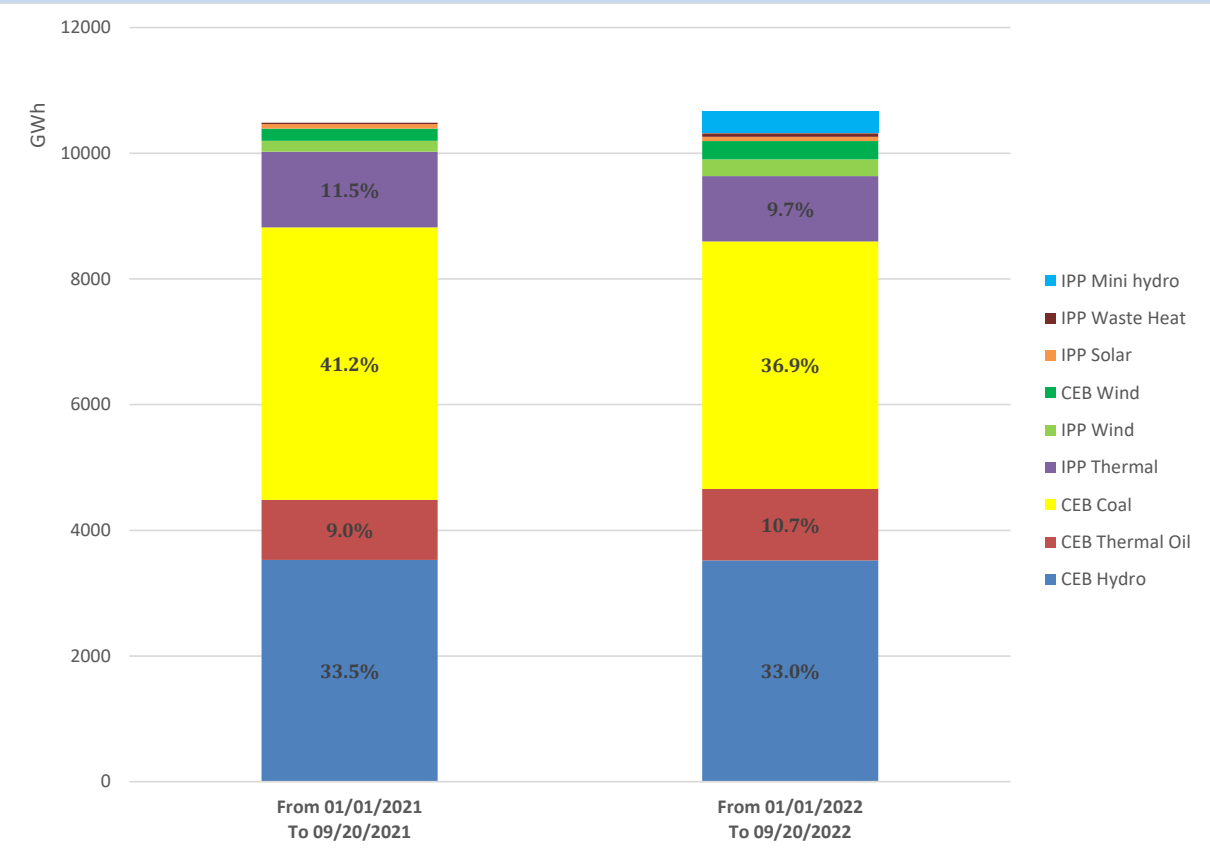
Solar Generation during the Previous day

September 19, 2022

Based on Telemetered Power Stations only



Cumulative Dispatch Comparison with Last Year



Thermal Plant Fuel types

Power Station	Primary Fuel
CEB Thermal	
Sapugaskanda 1	Heavy Fuel
Sapugaskanda 2	Heavy Fuel
Kelanitissa Small Gas Turbines	Auto Diesel
GT 7 - Kelanitissa	Auto Diesel
Kelanitissa CCY	Naphtha or Diesel
Lakvijaya 1	Coal
Lakvijaya 2	Coal
Lakvijaya 3	Coal
Uthuru Janani	Heavy Fuel
Barge CEB	Heavy Fuel

Power Station	Primary Fuel
Private Thermal	
Sojitz - Kelanitissa	Auto Diesel
West Coast	Auto Diesel / Heavy Fuel
ACE Matara	Heavy Fuel
ACE Embilipitiya	Heavy Fuel

Major Incidents during the day -as reported by CEB morning of

- 1) Rotational manual load shedding was carried out from 18:00hrs to 22:00hrs.
- 2) Norton pond spilling stopped at 16:19hrs.

September 21, 2022