

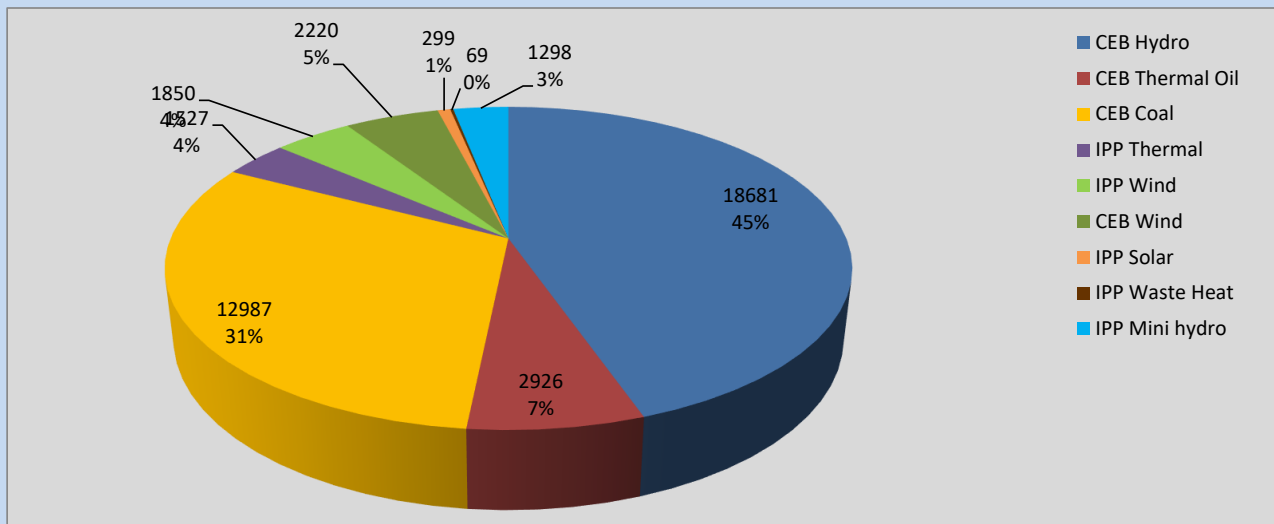
Generation and Reservoirs Statistics

September 19, 2022



PUBLIC UTILITIES COMMISSION OF SRI LANKA

Daily Generation Mix in MWh



Total Generation **41,857 MWh**

Note: Above data is excluding contribution from Roof Top Solar, 1MW Solar and certain Mini Hydro plants

Cumulative Dispatch

Note: Following data is Excluding contribution from Roof Top Solar, 1MW solar and Mini Hydro plants

For Current Month

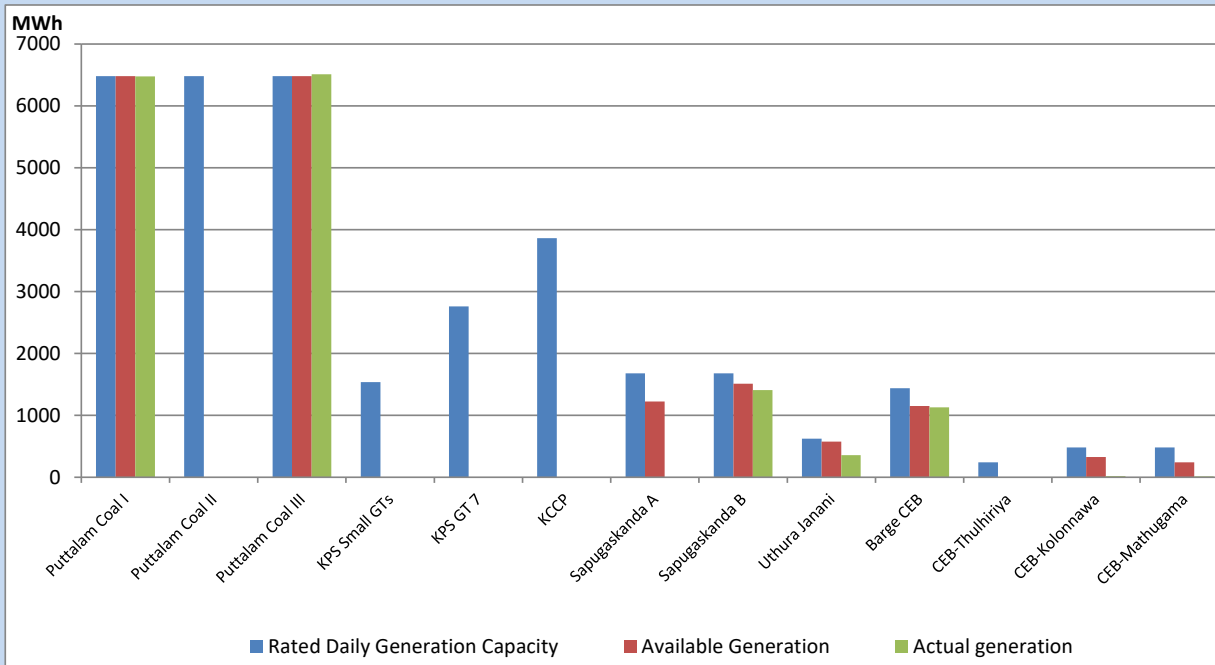
Category	Dispatch (GWh)	Percentage
CEB Hydro	369.07	50.20%
CEB Thermal Oil	20.51	2.79%
CEB Coal	212.05	28.84%
IPP Thermal	9.43	1.28%
SPP Wind	34.15	4.65%
CEB Wind	43.04	5.85%
SPP Solar	5.70	0.78%
SPP Solid Waste	4.16	0.57%
Mini Hydro	37.04	5.04%
Total	735.15	

For Current Year

Category	Dispatch (GWh)	Percentage
CEB Hydro	3,502.8	32.99%
CEB Thermal Oil	1,132.9	10.67%
CEB Coal	3,925.1	36.96%
IPP Thermal	1,036.4	9.76%
SPP Wind	265.0	2.50%
CEB Wind	289.1	2.72%
SPP Solar	68.0	0.64%
SPP Solid Waste	53.3	0.50%
Mini Hydro	347.1	3.27%
Total	10,619.3	

CEB owned Thermal Plant Dispatch

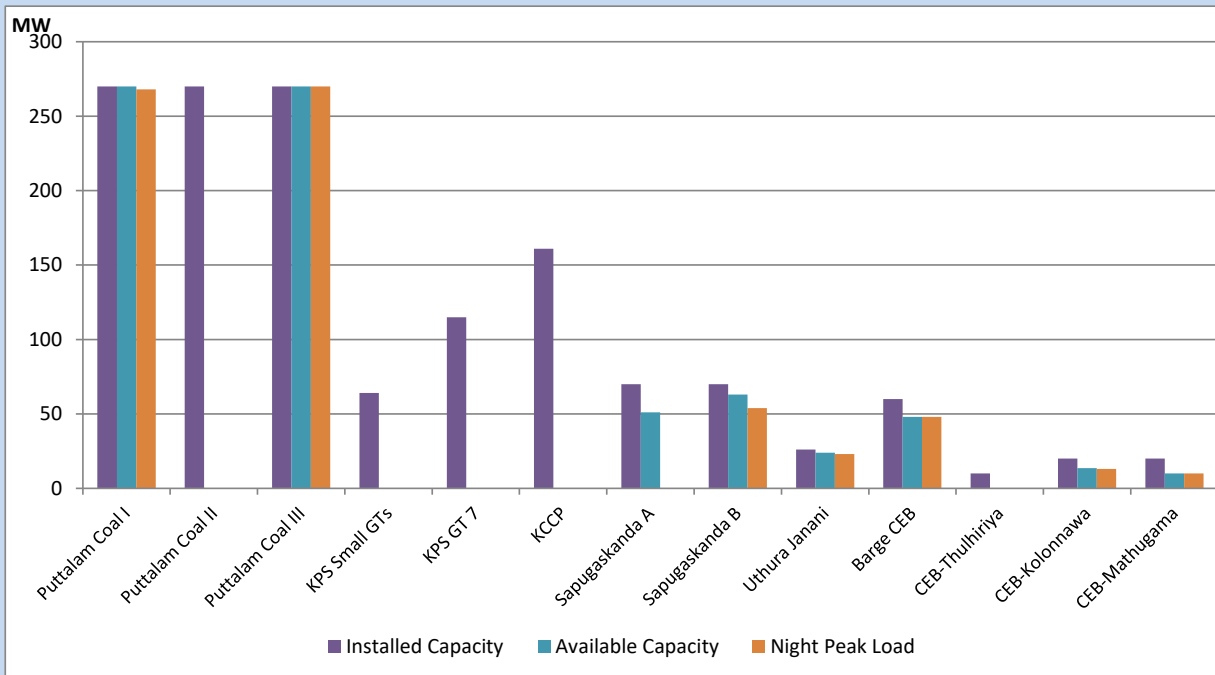
September 19, 2022



Available Generation is estimated based on plant availability at 6.00am on

September 20, 2022

CEB owned Thermal Plant Loading at the Night Peak



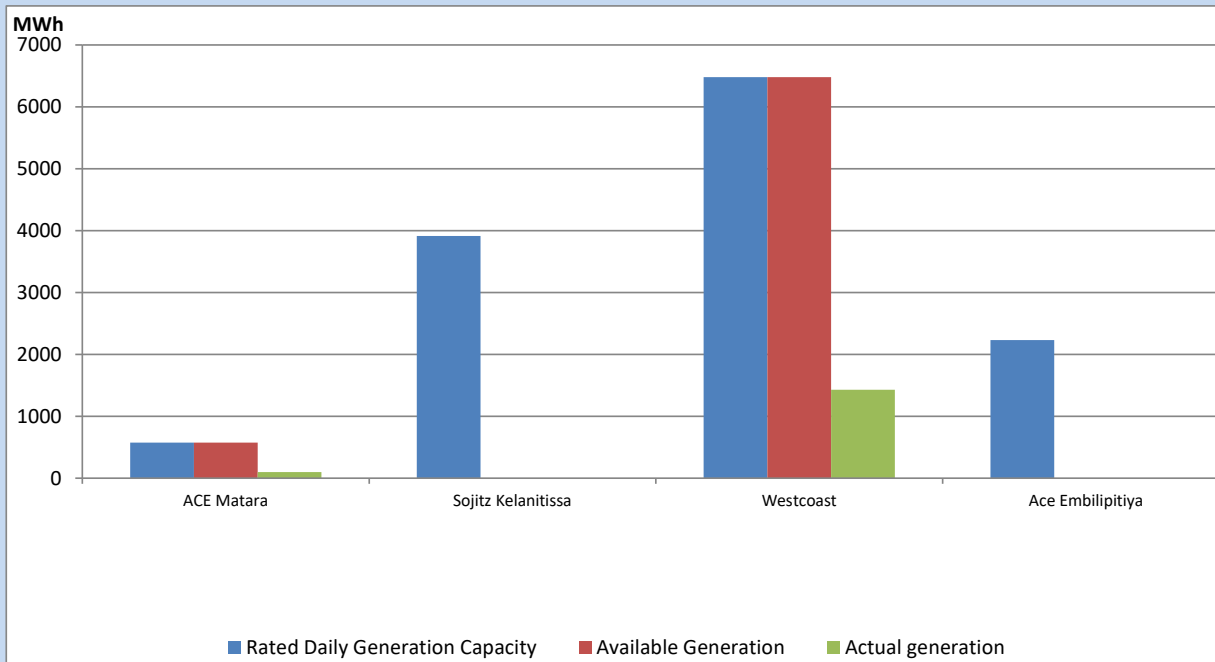
Note- Plant availability is recorded at 6.00 am on

September 20, 2022

IPP owned Thermal Plant Dispatch

September 19, 2022

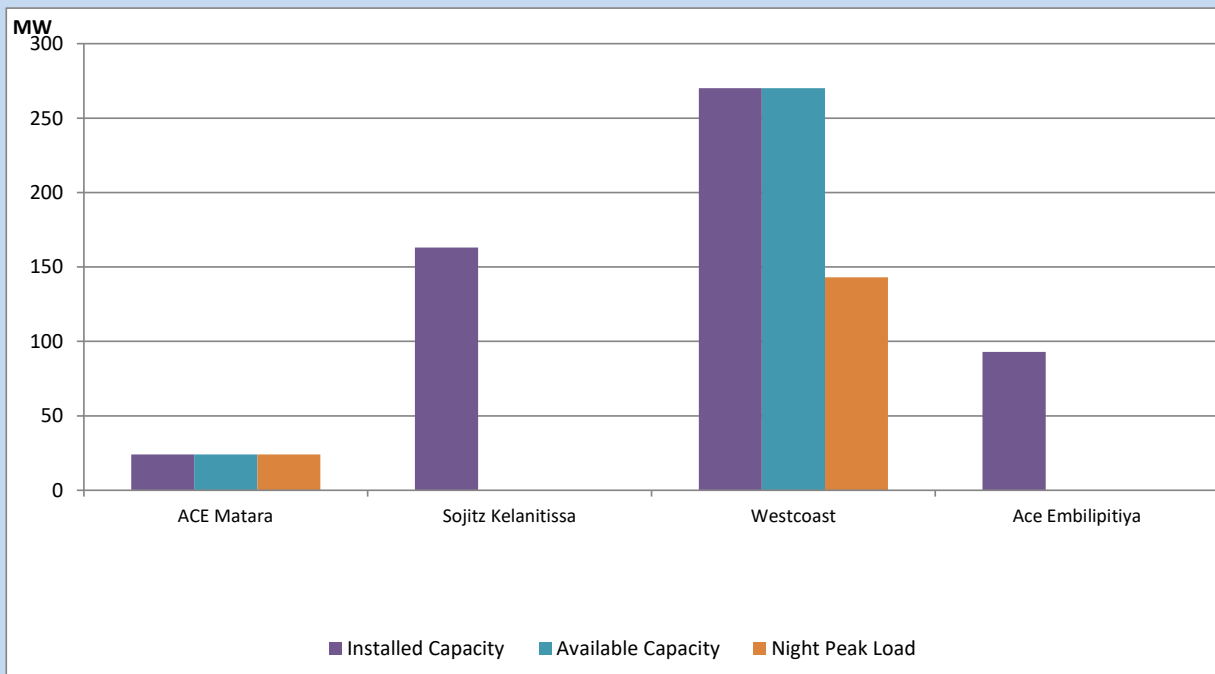
Asia Power, V Power Pallekale, Vpower Galle, V Power Horana, Vpower Hambantota, Vpower Valachchena and Altaqa Mahiyanganaya are not available due to expiration of PPAs



Available Generation is estimated based on plant availability at 6.00am on

September 20, 2022

IPP owned Thermal Plant Loading at the Night Peak

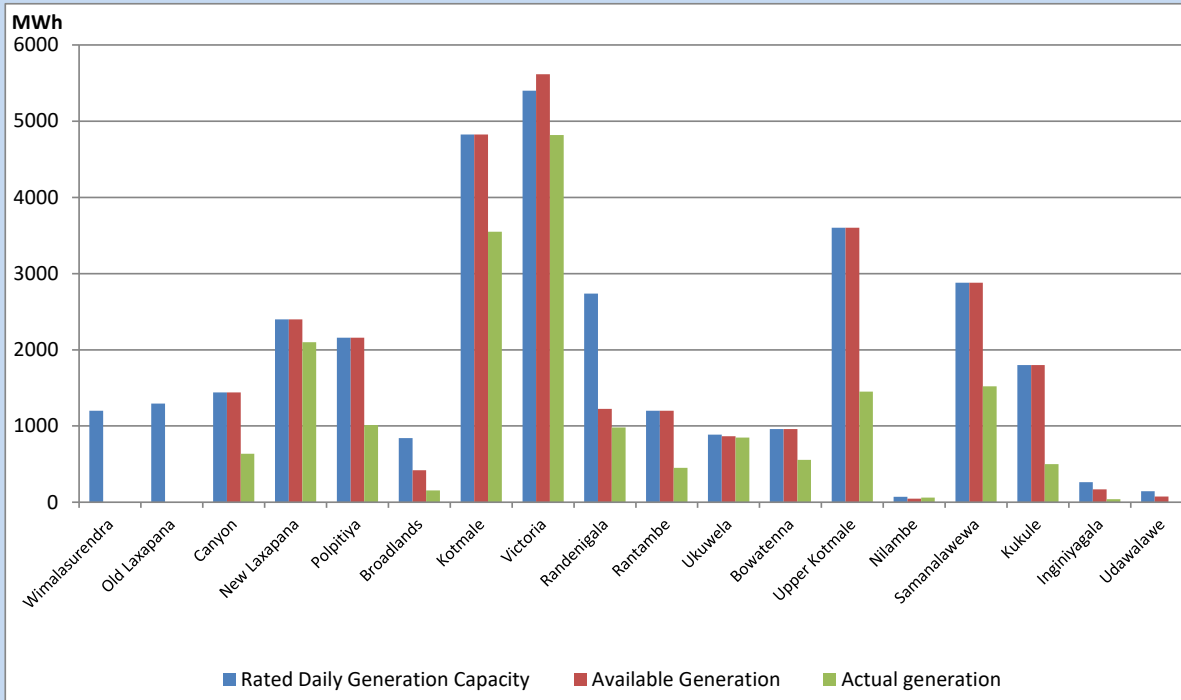


Note- Plant availability is recorded at 6.00 am on

September 20, 2022

Major Hydro Plant Dispatch

September 19, 2022

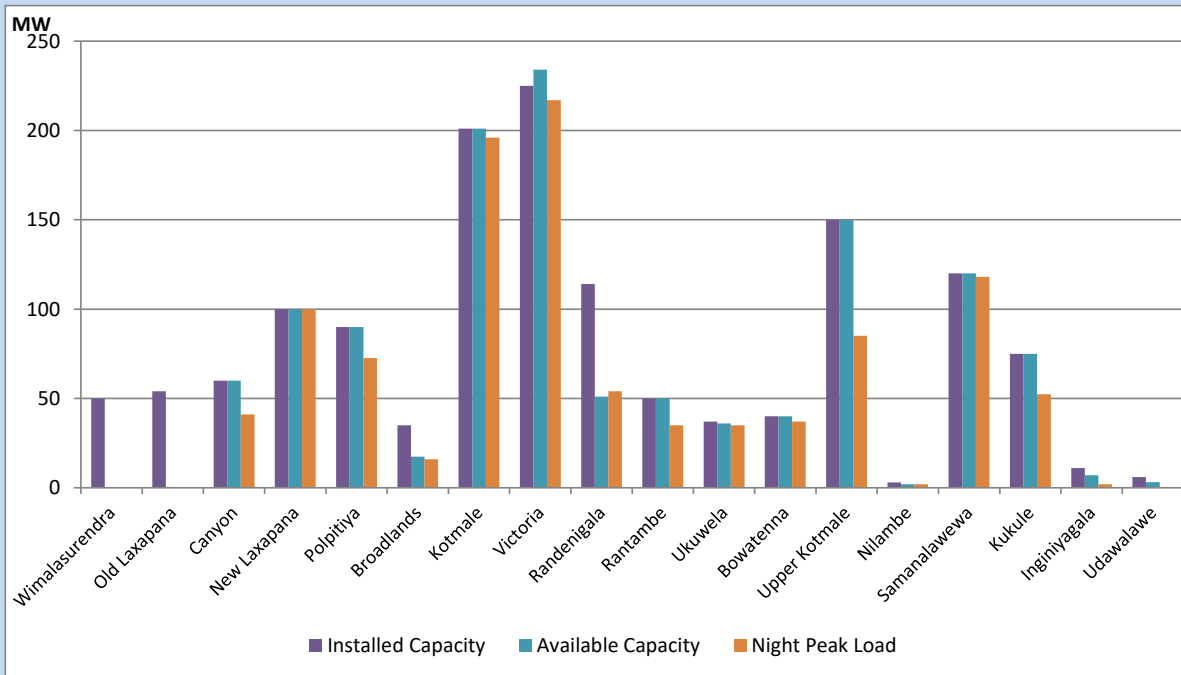


Available Generation is estimated based on plant availability at 6.00am on September 20, 2022
 Broadlands power plant is operating in the Commissioning Stage

September 20, 2022

Major Hydro Plant Loading at Night Peak

September 19, 2022



Note- Plant availability is recorded at 6.00 am on September 20, 2022
 Broadlands power plant is operating in the Commissioning Stage

Summary of Major Plant performance

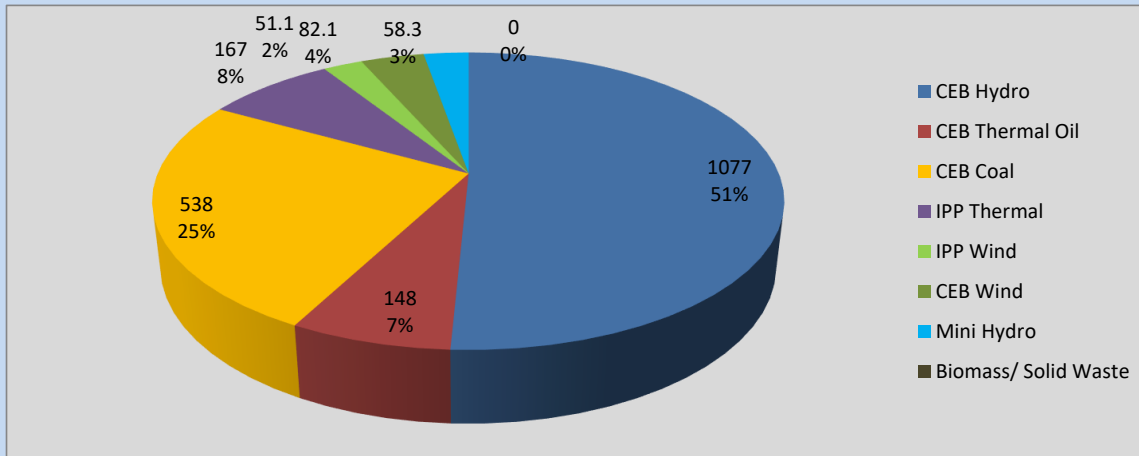
Plant	Installed Capacity	Plant Availability	Night peak Load	Plant Dispatch
	(MW)	(MW)	(MW)	(MWh)
Wimalasurendra	50	0	0	0
Old Laxapana	54	0	0	0
Canyon	60	60	41	637
New Laxapana	100	100	100	2,098
Polpitiya	90	90	73	1,013
Broadlands	35	18	16	154
Kotmale	201	201	196	3,550
Victoria	225	234	217	4,819
Randenigala	114	51	54	981
Rantambe	50	50	35	452
Ukuwela	37	36	35	850
Bowatenna	40	40	37	555
Upper Kotmale	150	150	85	1,451
Nilambe	3	2	2	61
Samanalawewa	120	120	118	1,520
Kukule	75	75	52	499
Inginiyagala	11	7	2	41
Udawalawe	6	3	0	0
Puttalam Coal I	270	270	268	6,477
Puttalam Coal II	270	0	0	0
Puttalam Coal III	270	270	270	6,510
KPS Small GTs	64	0	0	0
KPS GT 7	115	0	0	0
KCCP	161	0	0	0
Sapugaskanda A	70	51	0	0
Sapugaskanda B	70	63	54	1,407
Uthura Janani	26	24	23	356
Barge CEB	60	48	48	1,129
CEB-Thulhiriya	10	0	0	0
CEB-Kolonnawa	20	14	13	19
CEB-Mathugama	20	10	10	15
ACE Matara	24	24	24	100
Sojitz Kelanitissa	163	0	0	0
West Coast	270	270	143	1,427
ACE Embilipitiya	93	0	0	0
Total	3,397	2,280	2,107	41,857

Plant availability is the availability recorded at 6 am on

September 20, 2022

Contribution to the Night Peak in MW

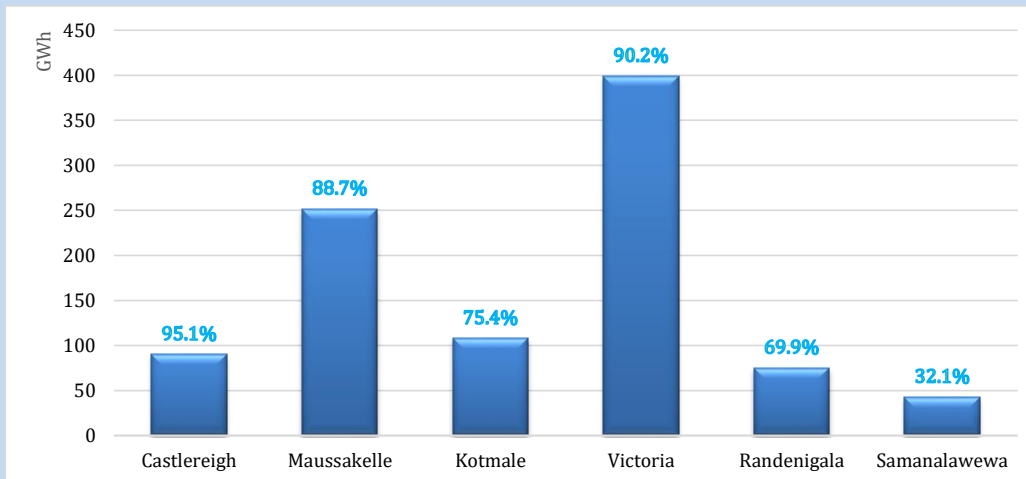
September 19, 2022



Night Peak*	2,121.4 MW
Day Peak	2,031.2 MW
Minimum Demand	1,212.5 MW

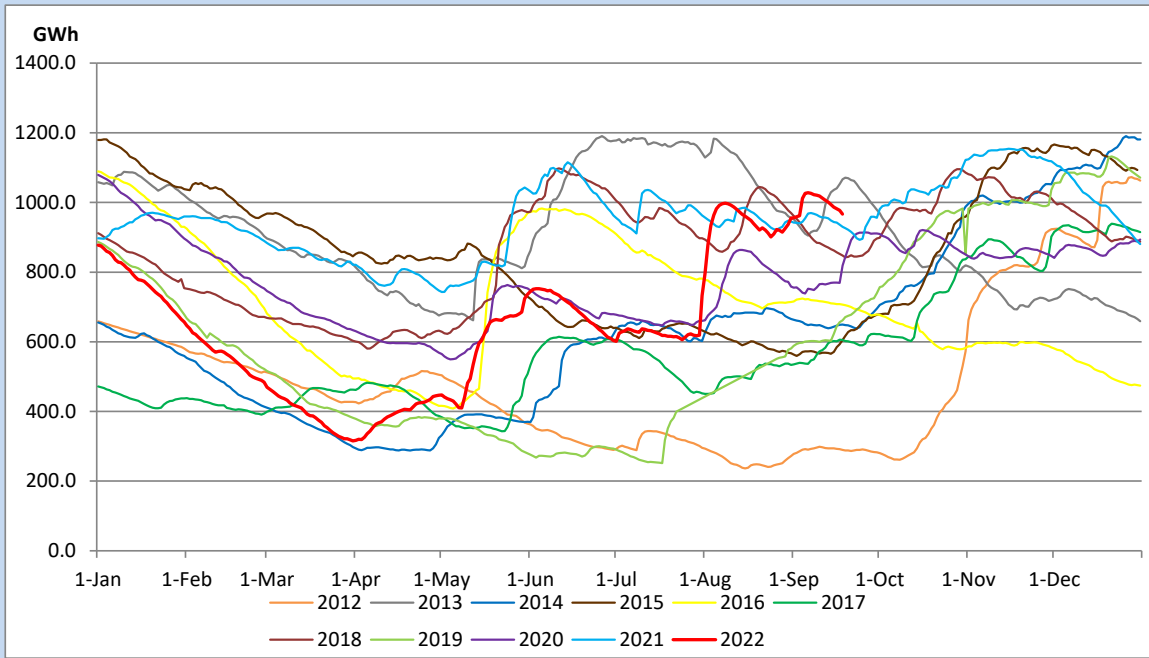
Above figures are excluding contribution from Roof Top Solar, 1MW solar, certain Wind plants and Mini Hydro plants

Reservoir Levels - as at 06.00 Hr on September 20, 2022

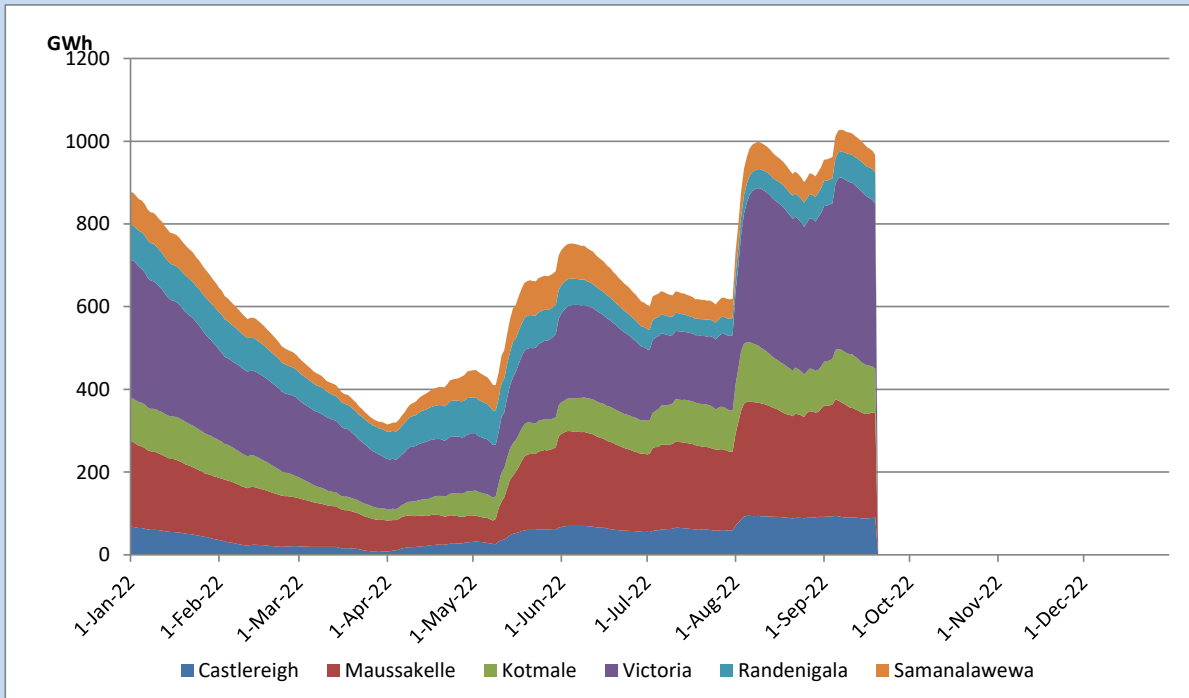


Total Reservoir Level	966.9 GWh
% of Total capacity	80.2%

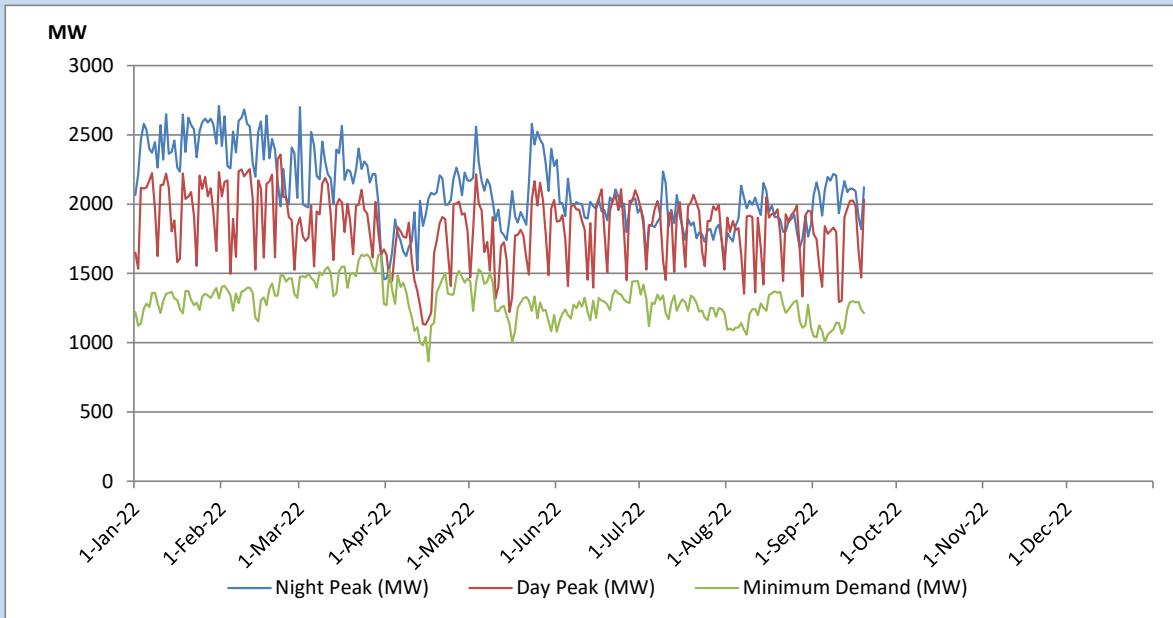
Comparison of Total Reservoir Storage Levels with Past Years



Variation of Major Hydro Reservoir Levels in the current year (GWh)



Variation of Demand during the current year

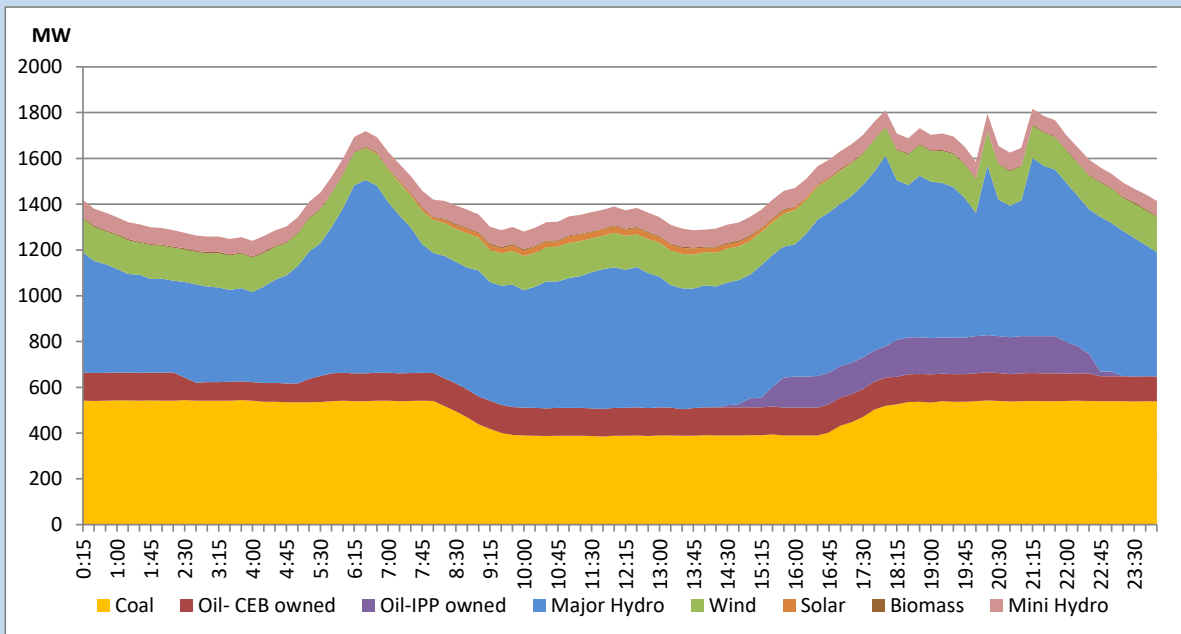


The above figures are excluding contribution from Roof Top Solar, 1MW solar, certain Wind plants and Mini Hydro plants

Daily Load Curve of the Previous day

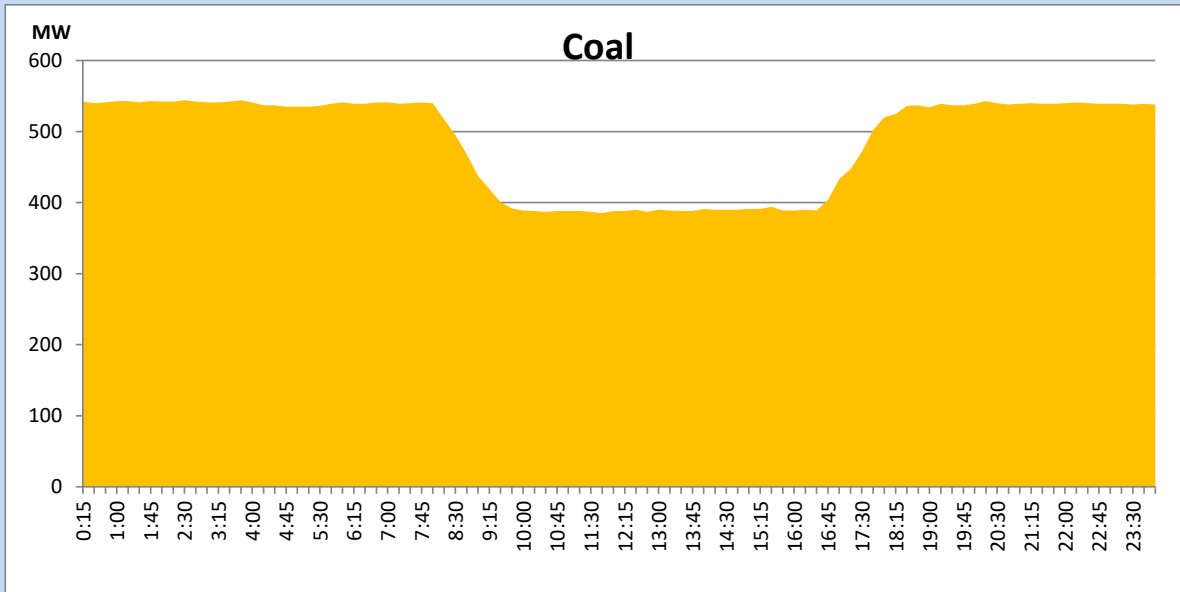
September 18, 2022

Solar and wind data is based on Telemetered Power Stations only



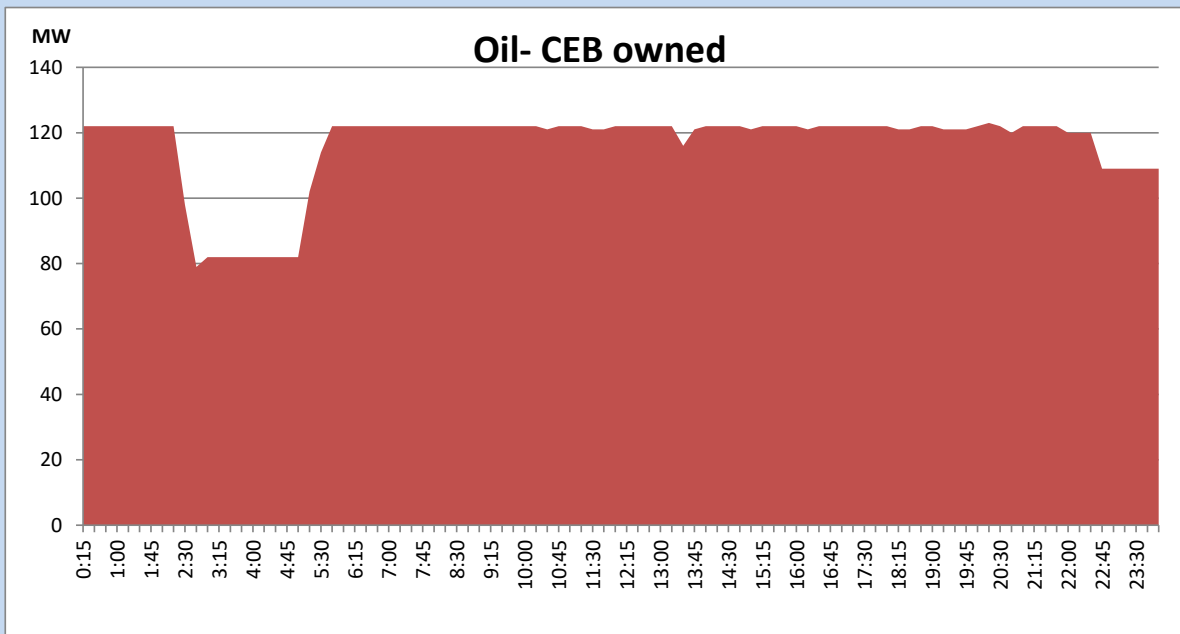
Coal Generation during the Previous day

September 18, 2022



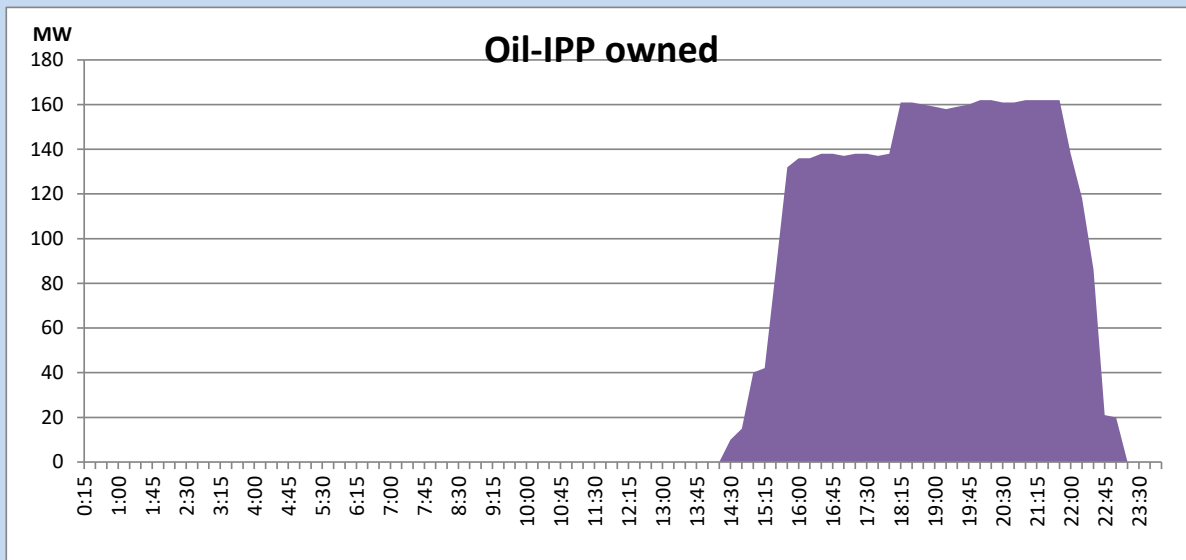
CEB Oil Plant Generation during the Previous day

September 18, 2022



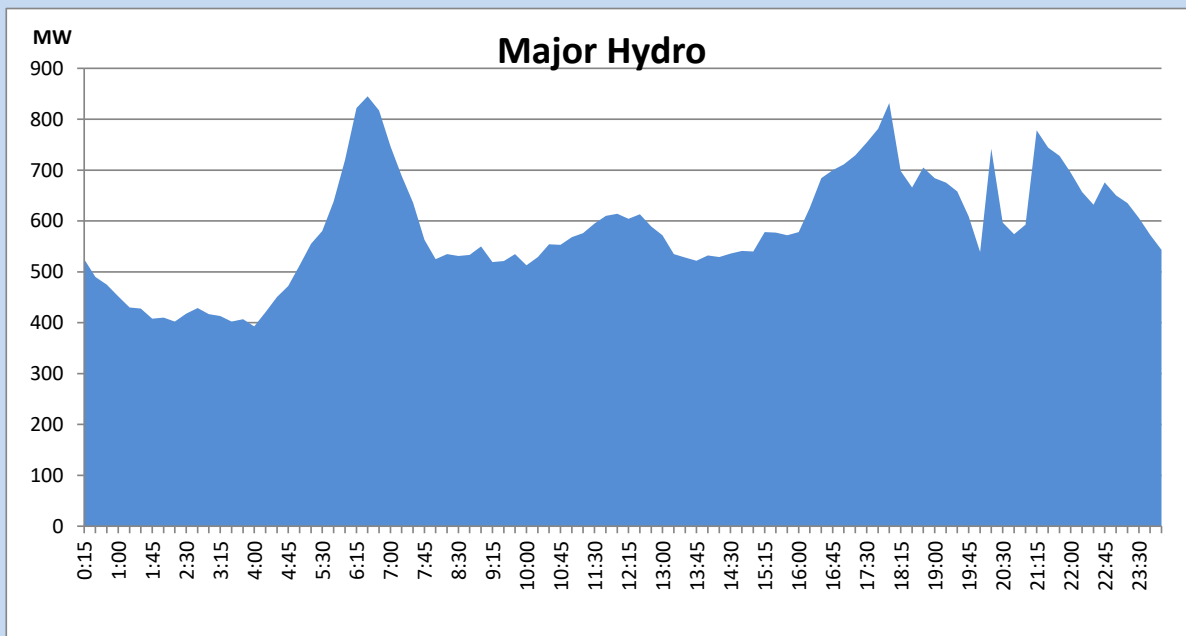
IPP Oil Plant Generation during the Previous day

September 18, 2022



Major Hydro Generation during the Previous day

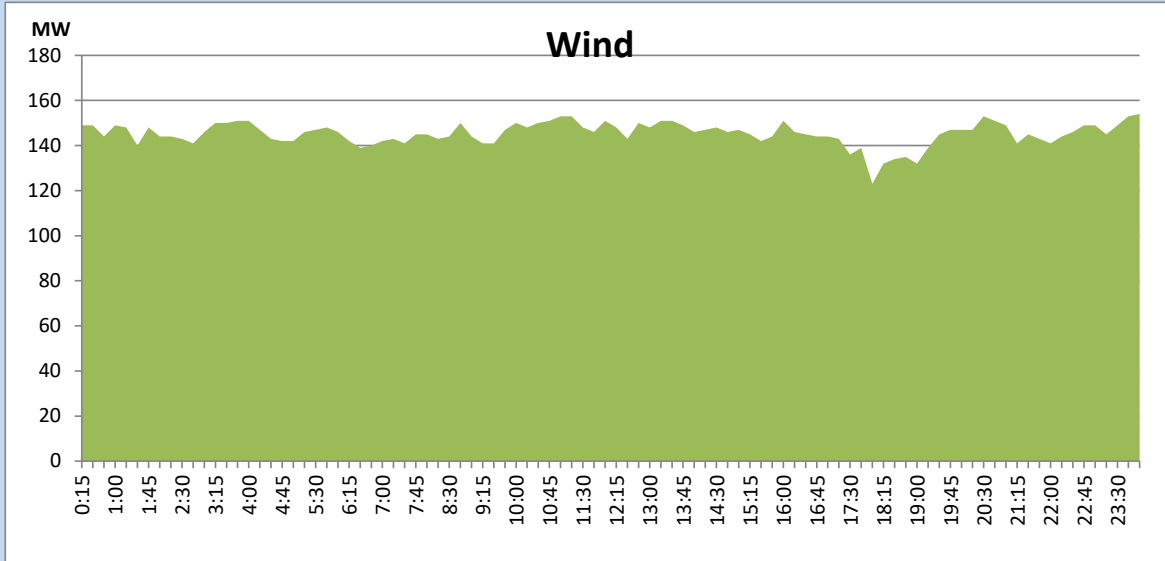
September 18, 2022



Wind Generation during the Previous day

September 18, 2022

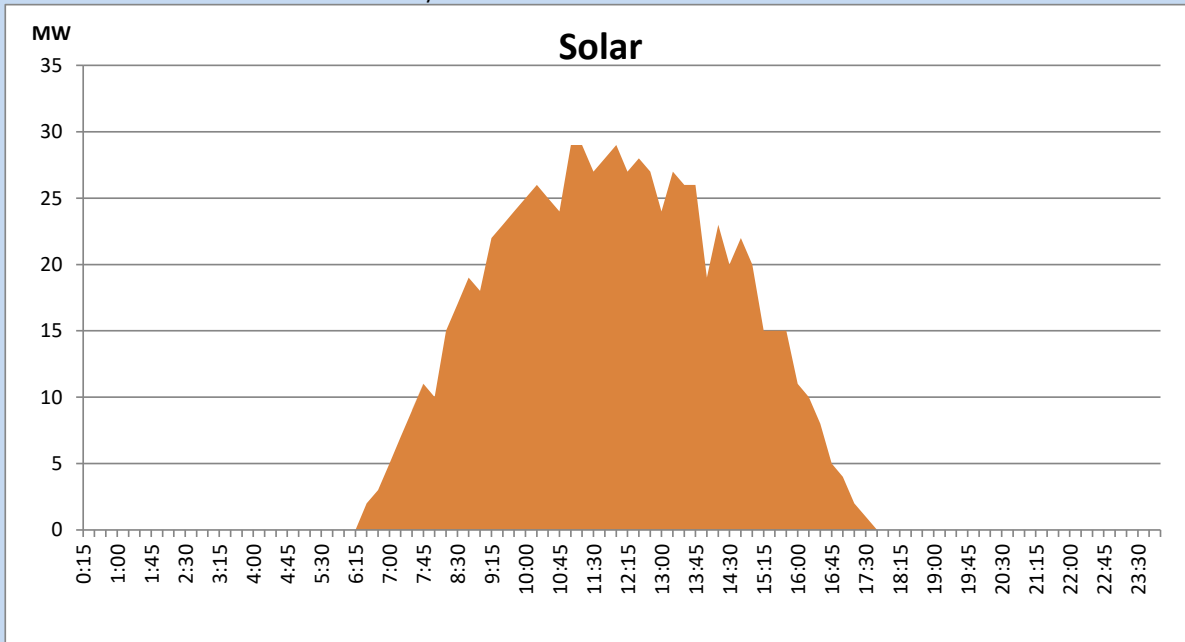
Based on Telemetered Power Stations only



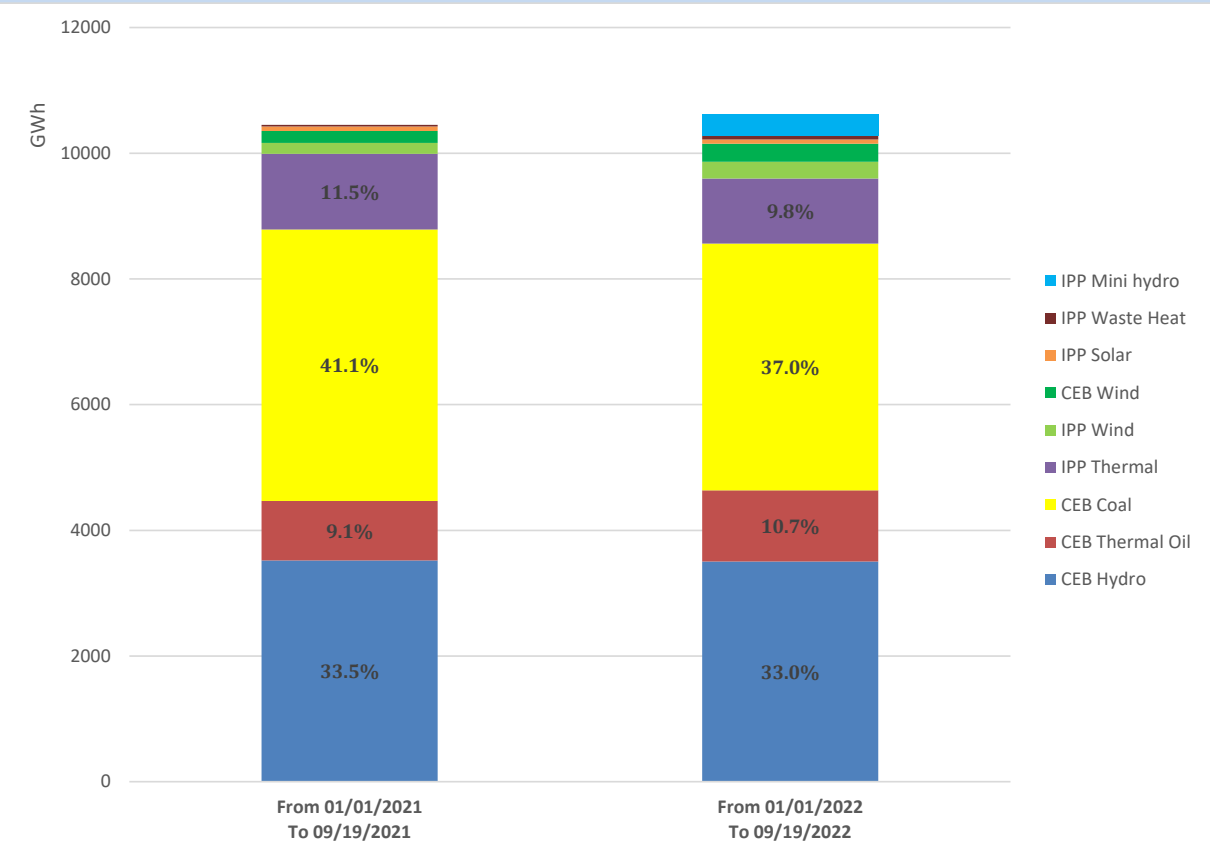
Solar Generation during the Previous day

September 18, 2022

Based on Telemetered Power Stations only



Cumulative Dispatch Comparison with Last Year



Thermal Plant Fuel types

Power Station	Primary Fuel
CEB Thermal	
Sapugaskanda 1	Heavy Fuel
Sapugaskanda 2	Heavy Fuel
Kelanitissa Small Gas Turbines	Auto Diesel
GT 7 - Kelanitissa	Auto Diesel
Kelanitissa CCY	Naphtha or Diesel
Lakvijaya 1	Coal
Lakvijaya 2	Coal
Lakvijaya 3	Coal
Uthuru Janani	Heavy Fuel
Barge CEB	Heavy Fuel

Power Station	Primary Fuel
Private Thermal	
Sojitz - Kelanitissa	Auto Diesel
West Coast	Auto Diesel / Heavy Fuel
ACE Matara	Heavy Fuel
ACE Embilipitiya	Heavy Fuel

Major Incidents during the day -as reported by CEB morning of

September 20, 2022

- 1) Rotational manual load shedding was carried out from 18:00hrs to 21:00hrs.
- 2) Norton pond spilling continues to the present hour.