

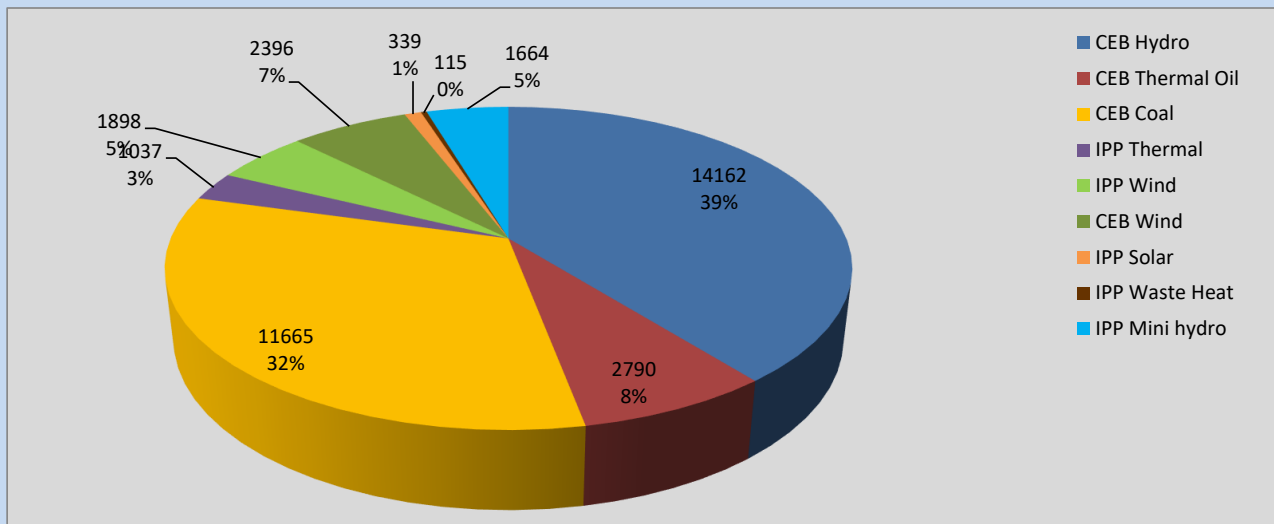
# Generation and Reservoirs Statistics

September 18, 2022



PUBLIC UTILITIES COMMISSION OF SRI LANKA

## Daily Generation Mix in MWh



**Total Generation** **36,066 MWh**

Note: Above data is excluding contribution from Roof Top Solar, 1MW Solar and certain Mini Hydro plants

## Cumulative Dispatch

Note: Following data is Excluding contribution from Roof Top Solar, 1MW solar and Mini Hydro plants

### For Current Month

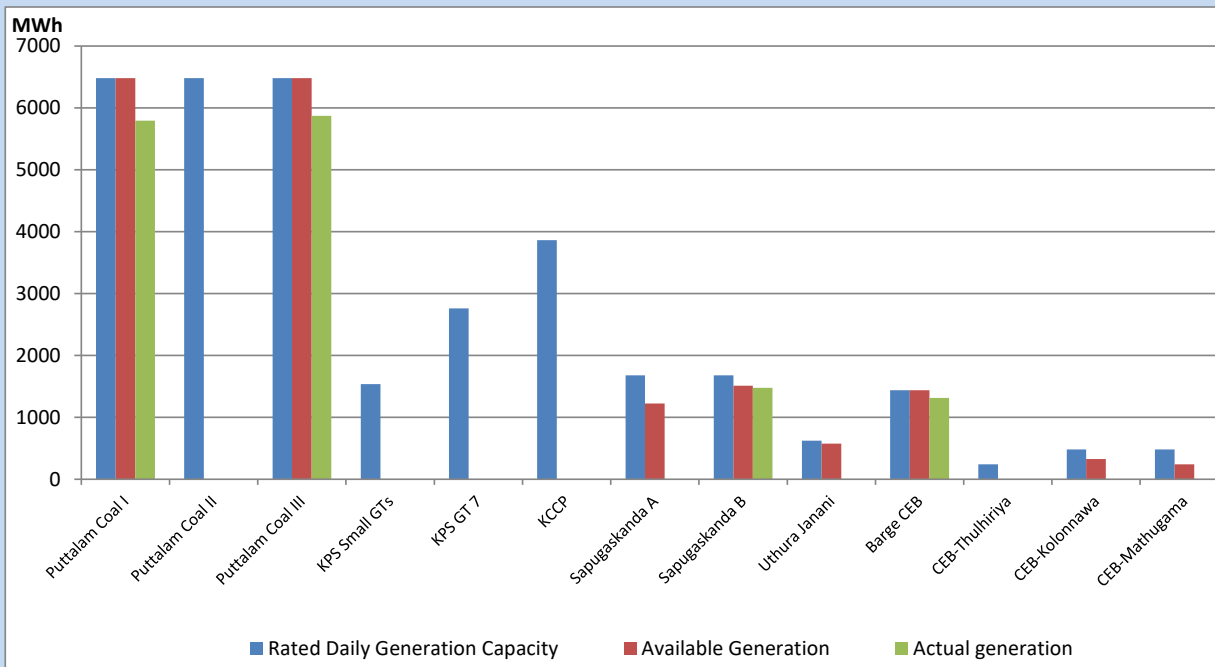
Category	Dispatch (GWh)	Percentage
CEB Hydro	350.39	50.54%
CEB Thermal Oil	17.58	2.54%
CEB Coal	199.06	28.71%
IPP Thermal	7.90	1.14%
SPP Wind	32.30	4.66%
CEB Wind	40.82	5.89%
SPP Solar	5.40	0.78%
SPP Solid Waste	4.09	0.59%
Mini Hydro	35.74	5.16%
<b>Total</b>	<b>693.28</b>	

### For Current Year

Category	Dispatch (GWh)	Percentage
CEB Hydro	3,484.1	32.94%
CEB Thermal Oil	1,129.9	10.68%
CEB Coal	3,912.1	36.99%
IPP Thermal	1,034.8	9.78%
SPP Wind	263.1	2.49%
CEB Wind	286.9	2.71%
SPP Solar	67.7	0.64%
SPP Solid Waste	53.2	0.50%
Mini Hydro	345.8	3.27%
<b>Total</b>	<b>10,577.4</b>	

## CEB owned Thermal Plant Dispatch

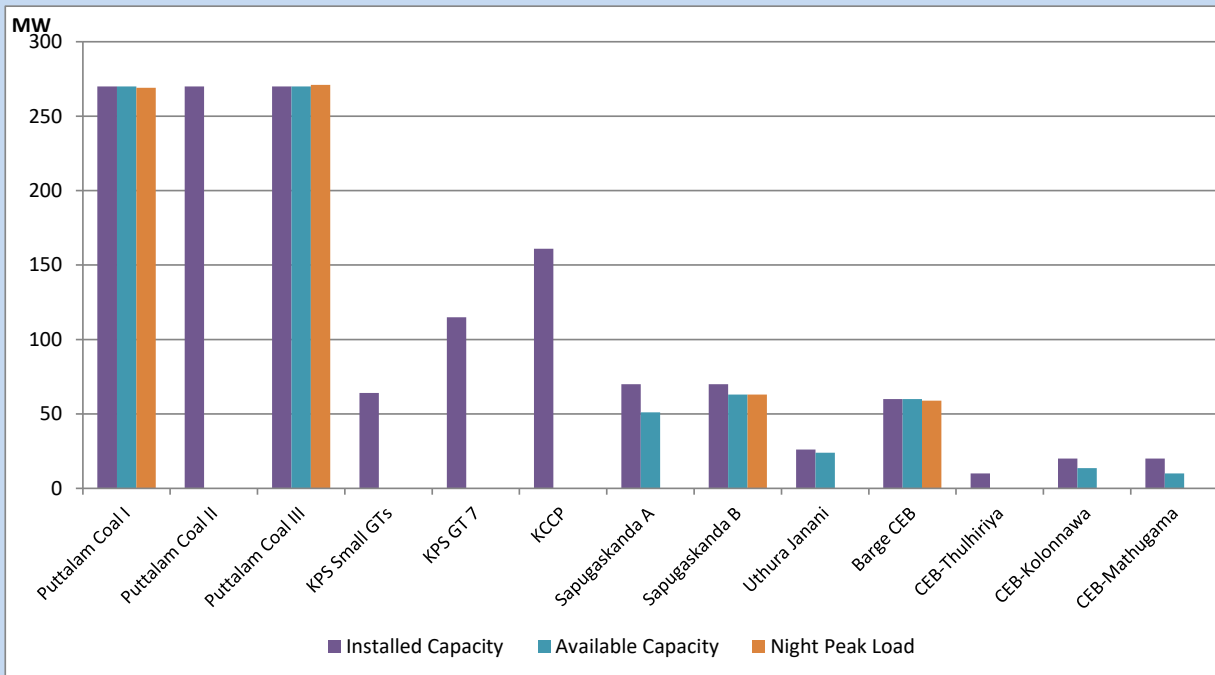
September 18, 2022



Available Generation is estimated based on plant availability at 6.00am on

September 19, 2022

## CEB owned Thermal Plant Loading at the Night Peak



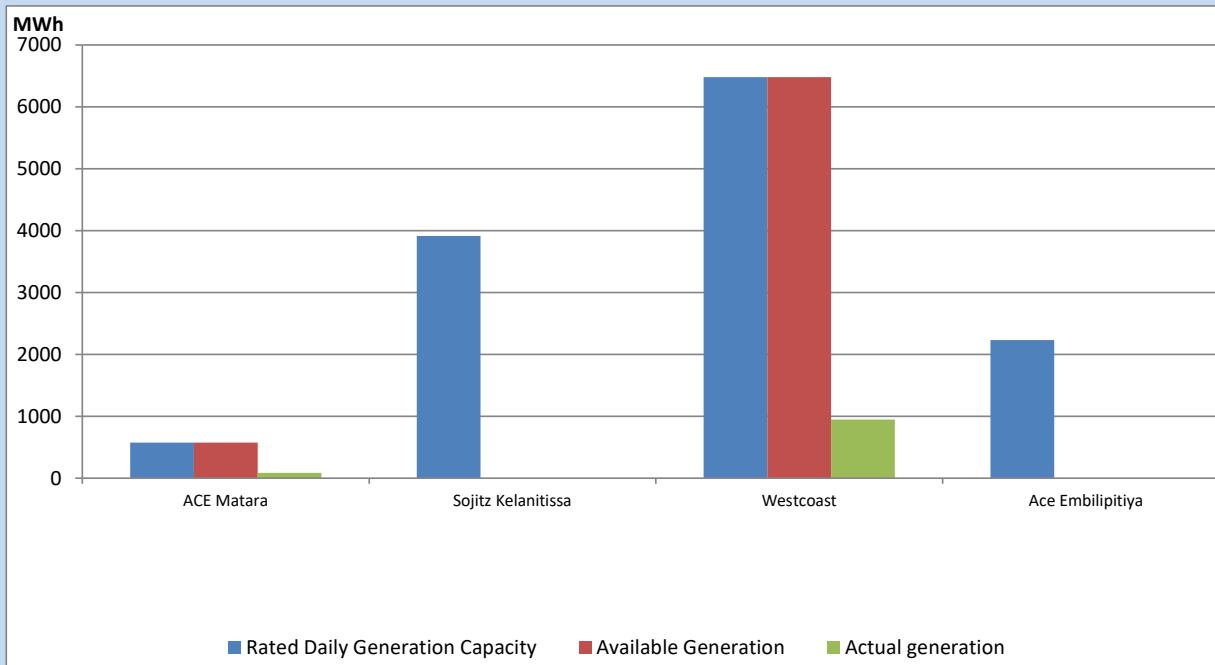
Note- Plant availability is recorded at 6.00 am on

September 19, 2022

## IPP owned Thermal Plant Dispatch

September 18, 2022

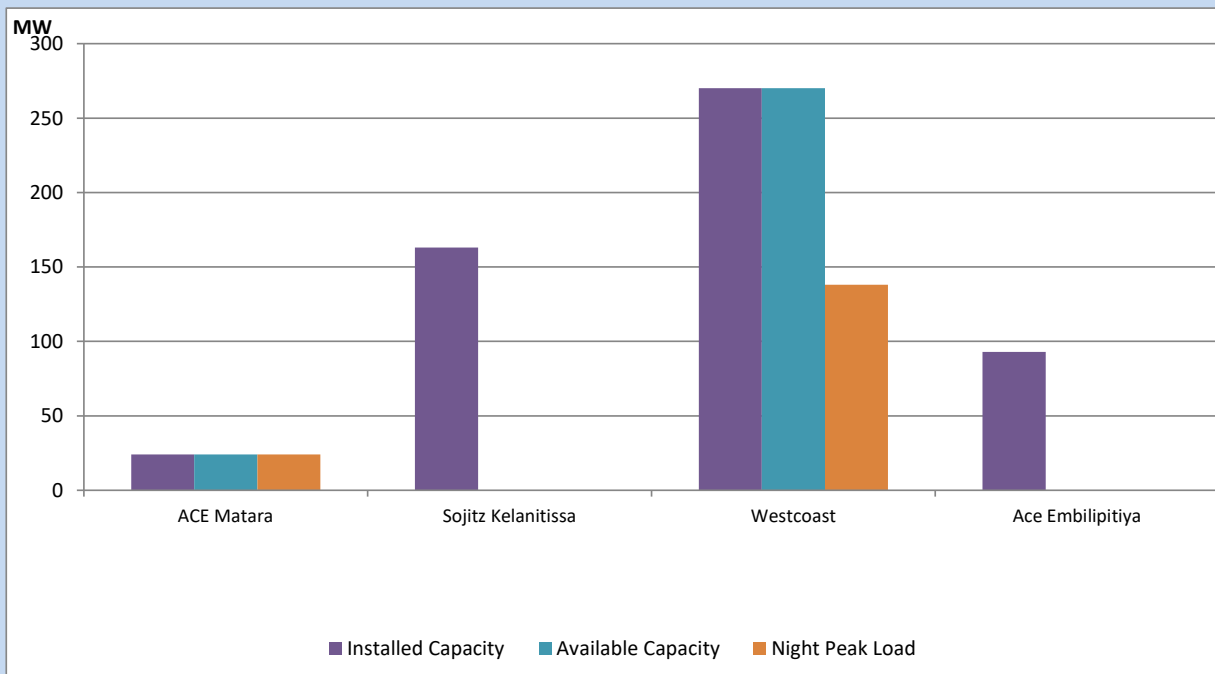
Asia Power, V Power Pallekale, Vpower Galle, V Power Horana, Vpower Hambantota, Vpower Valachchena and Altaqa Mahiyanganaya are not available due to expiration of PPAs



Available Generation is estimated based on plant availability at 6.00am on

September 19, 2022

## IPP owned Thermal Plant Loading at the Night Peak

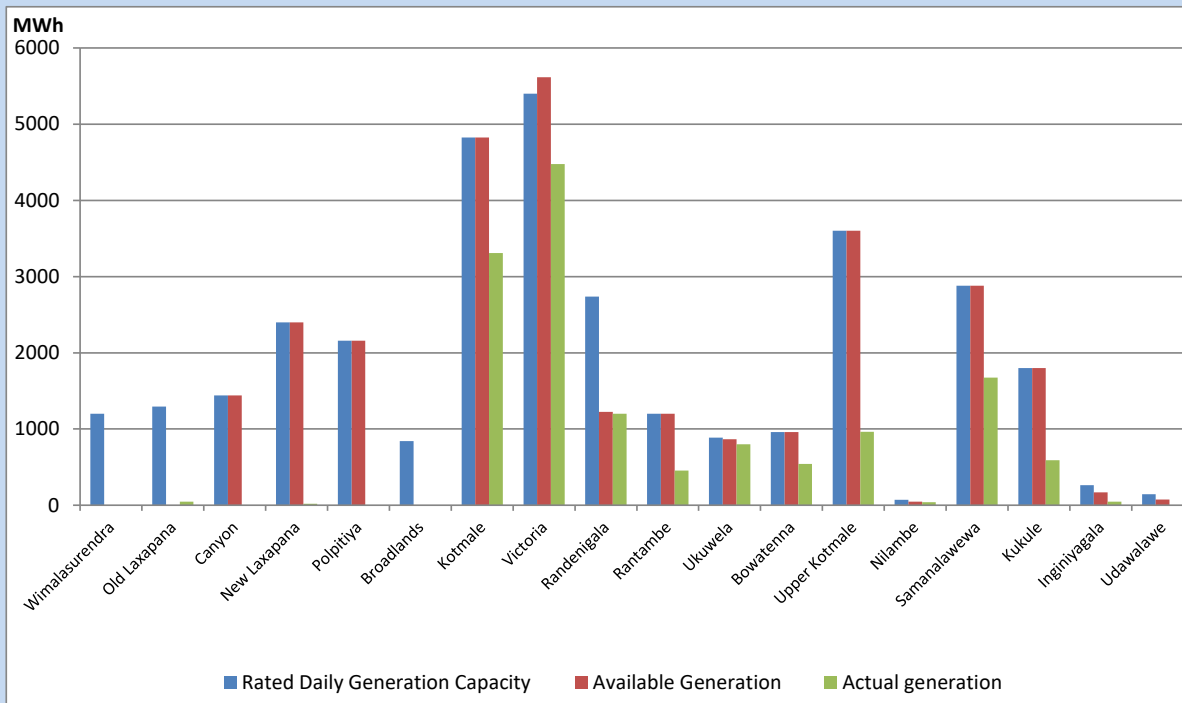


Note- Plant availability is recorded at 6.00 am on

September 19, 2022

## Major Hydro Plant Dispatch

September 18, 2022

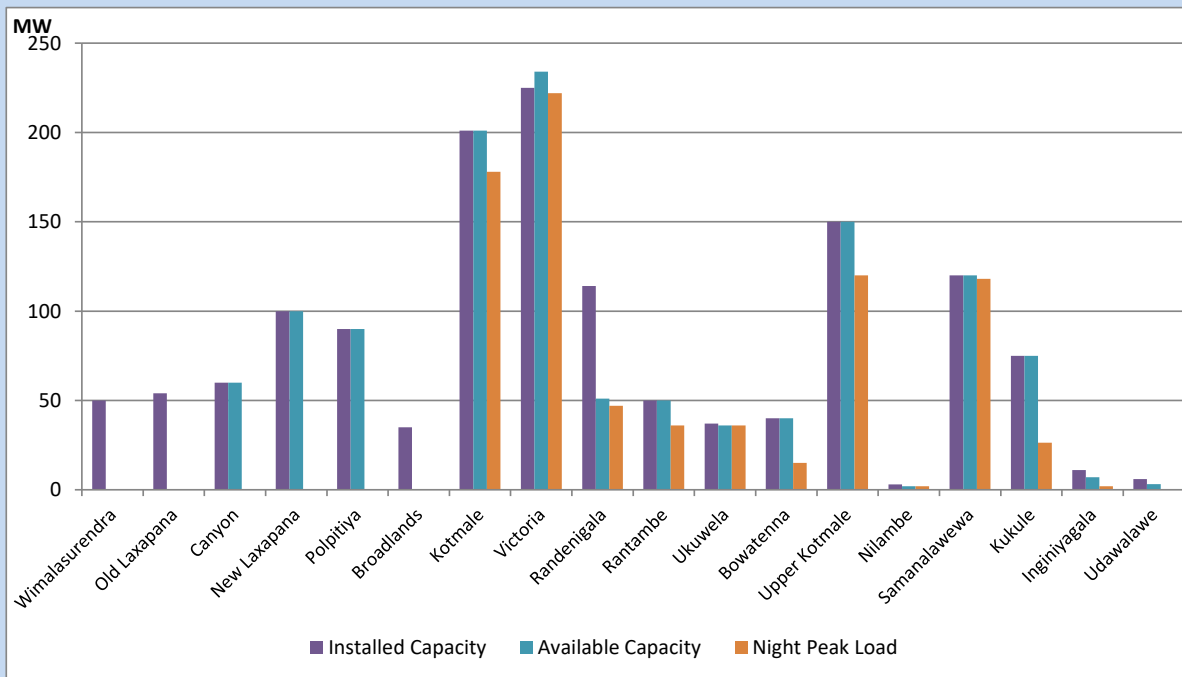


Available Generation is estimated based on plant availability at 6.00am on  
Broadlands power plant is operating in the Commissioning Stage

September 19, 2022

## Major Hydro Plant Loading at Night Peak

September 18, 2022



Note- Plant availability is recorded at 6.00 am on  
Broadlands power plant is operating in the Commissioning Stage

September 19, 2022

## Summary of Major Plant performance

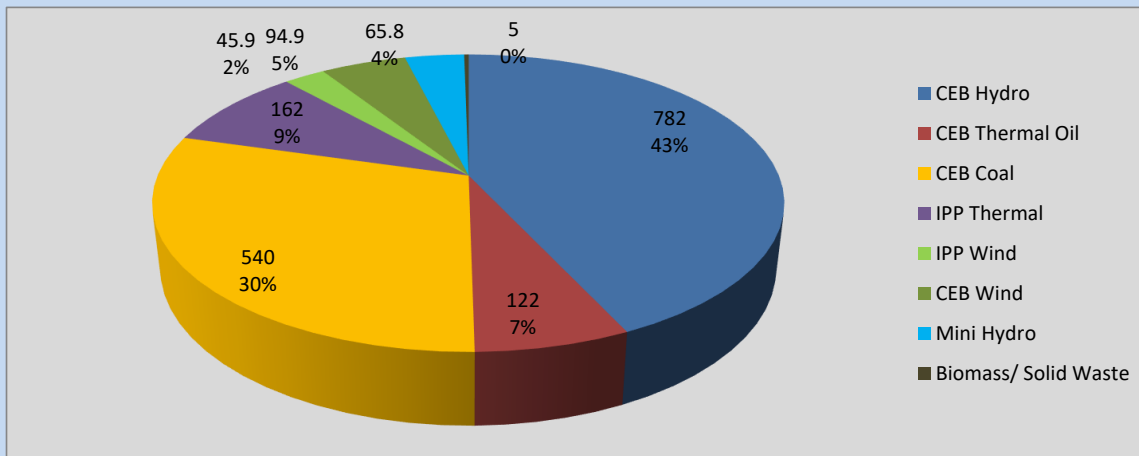
Plant	Installed Capacity	Plant Availability	Night peak Load	Plant Dispatch
	(MW)	(MW)	(MW)	(MWh)
Wimalasurendra	50	0	0	0
Old Laxapana	54	0	0	48
Canyon	60	60	0	0
New Laxapana	100	100	0	19
Polpitiya	90	90	0	0
Broadlands	35	0	0	0
Kotmale	201	201	178	3,310
Victoria	225	234	222	4,477
Randenigala	114	51	47	1,200
Rantambe	50	50	36	454
Ukuwela	37	36	36	801
Bowatenna	40	40	15	540
Upper Kotmale	150	150	120	964
Nilambe	3	2	2	39
Samanalawewa	120	120	118	1,673
Kukule	75	75	26	591
Inginiyagala	11	7	2	46
Udawalawe	6	3	0	0
Puttalam Coal I	270	270	269	5,795
Puttalam Coal II	270	0	0	0
Puttalam Coal III	270	270	271	5,870
KPS Small GTs	64	0	0	0
KPS GT 7	115	0	0	0
KCCP	161	0	0	0
Sapugaskanda A	70	51	0	0
Sapugaskanda B	70	63	63	1,477
Uthura Janani	26	24	0	0
Barge CEB	60	60	59	1,313
CEB-Thulhiriya	10	0	0	0
CEB-Kolonnawa	20	14	0	0
CEB-Mathugama	20	10	0	0
ACE Matara	24	24	24	87
Sojitz Kelanitissa	163	0	0	0
West Coast	270	270	138	950
ACE Embilipitiya	93	0	0	0
<b>Total</b>	<b>3,397</b>	<b>2,275</b>	<b>1,838</b>	<b>36,066</b>

Plant availability is the availability recorded at 6 am on

September 19, 2022

## Contribution to the Night Peak in MW

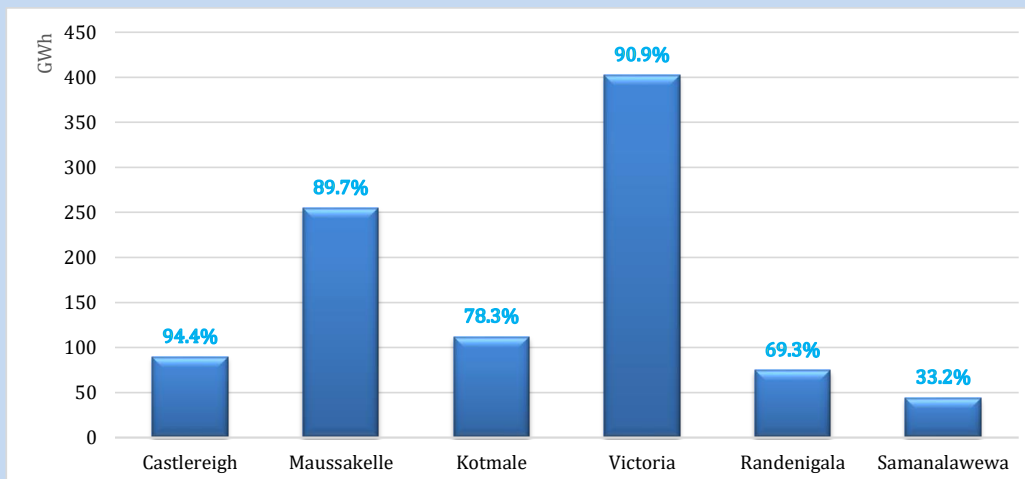
September 18, 2022



Night Peak*	1,818.0 MW
Day Peak	1,469.9 MW
Minimum Demand	1,238.4 MW

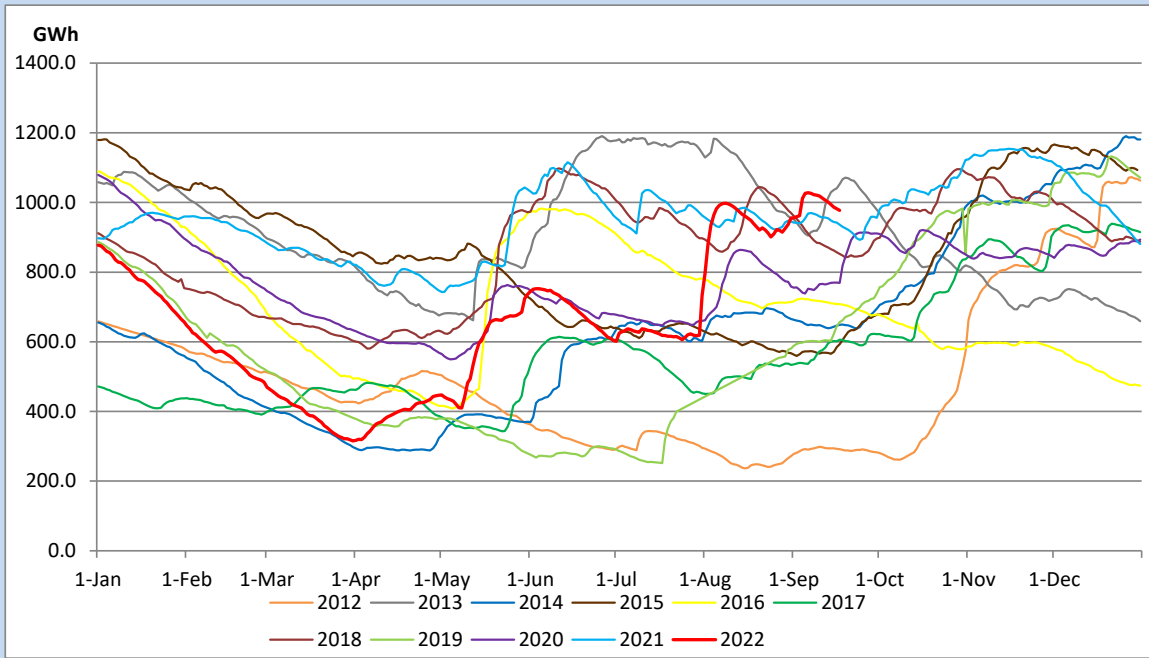
Above figures are excluding contribution from Roof Top Solar, 1MW solar, certain Wind plants and Mini Hydro plants

## Reservoir Levels - as at 06.00 Hr on September 19, 2022

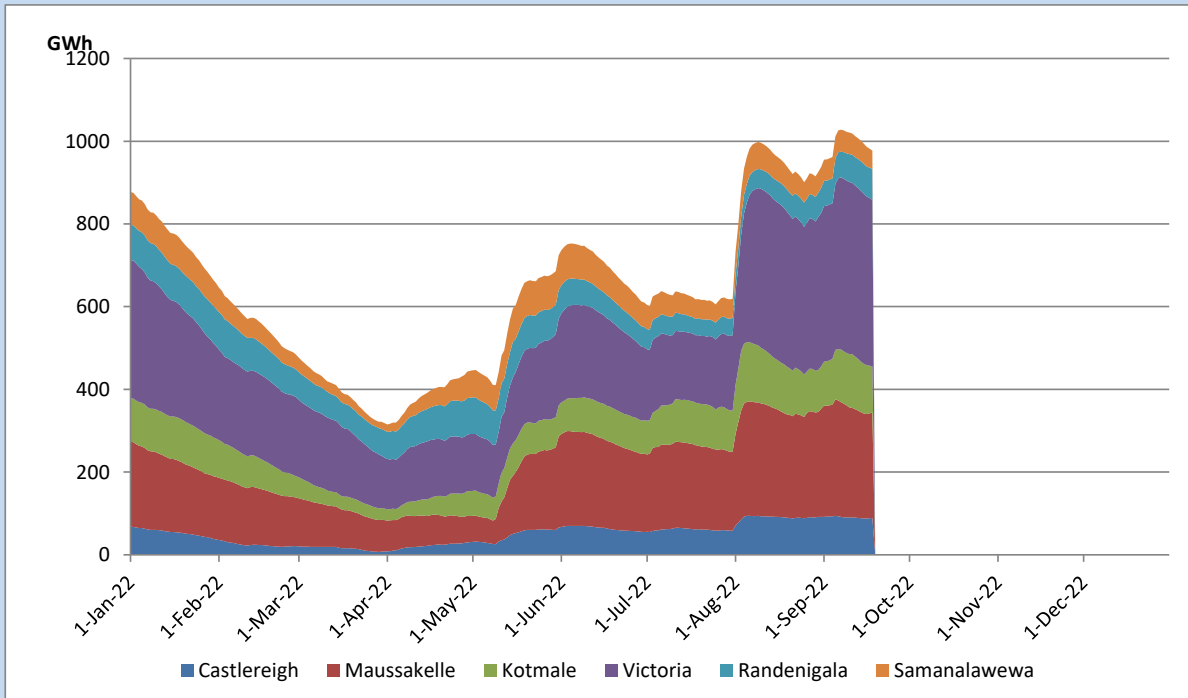


Total Reservoir Level	977 GWh
% of Total capacity	81.1%

## Comparison of Total Reservoir Storage Levels with Past Years

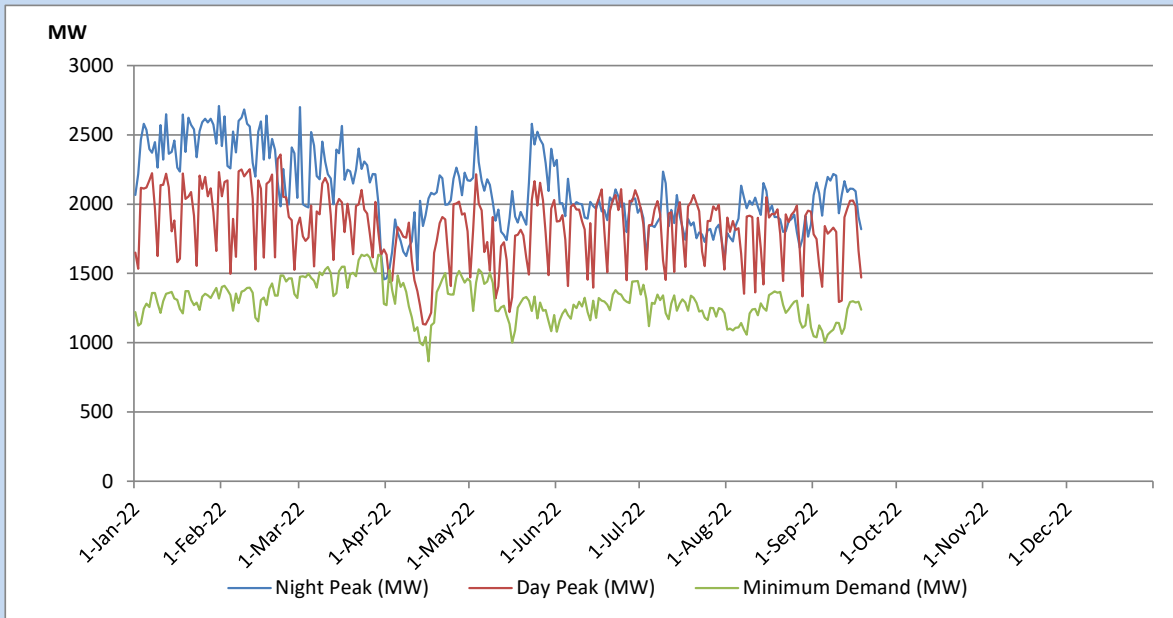


## Variation of Major Hydro Reservoir Levels in the current year (GWh)





## Variation of Demand during the current year

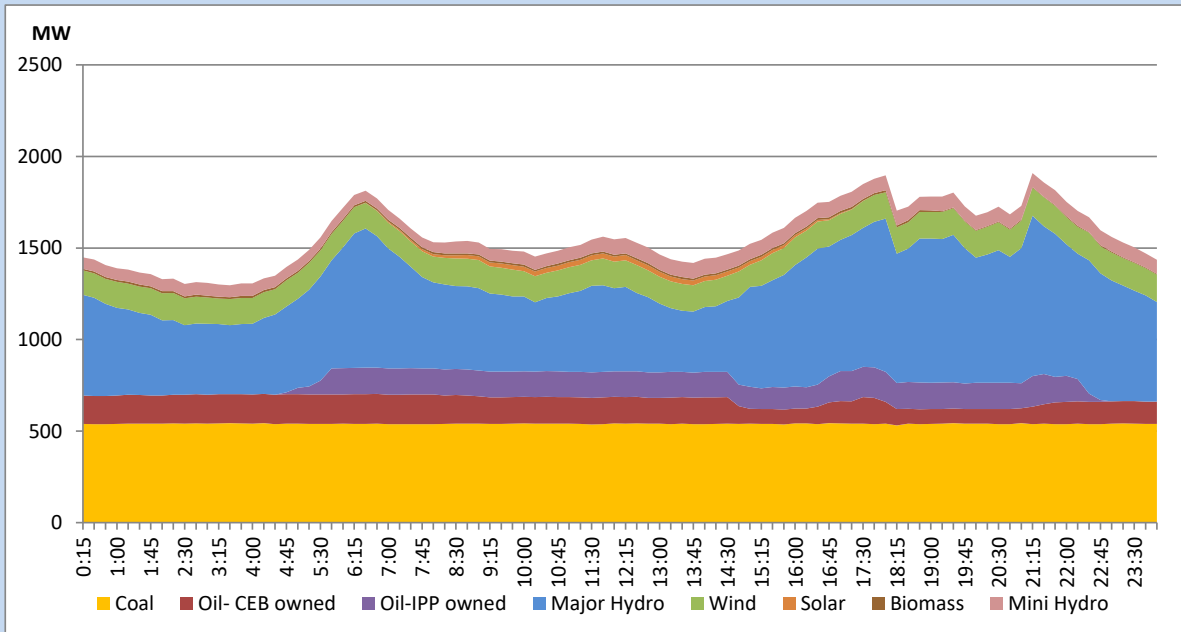


The above figures are excluding contribution from Roof Top Solar, 1MW solar, certain Wind plants and Mini Hydro plants

## Daily Load Curve of the Previous day

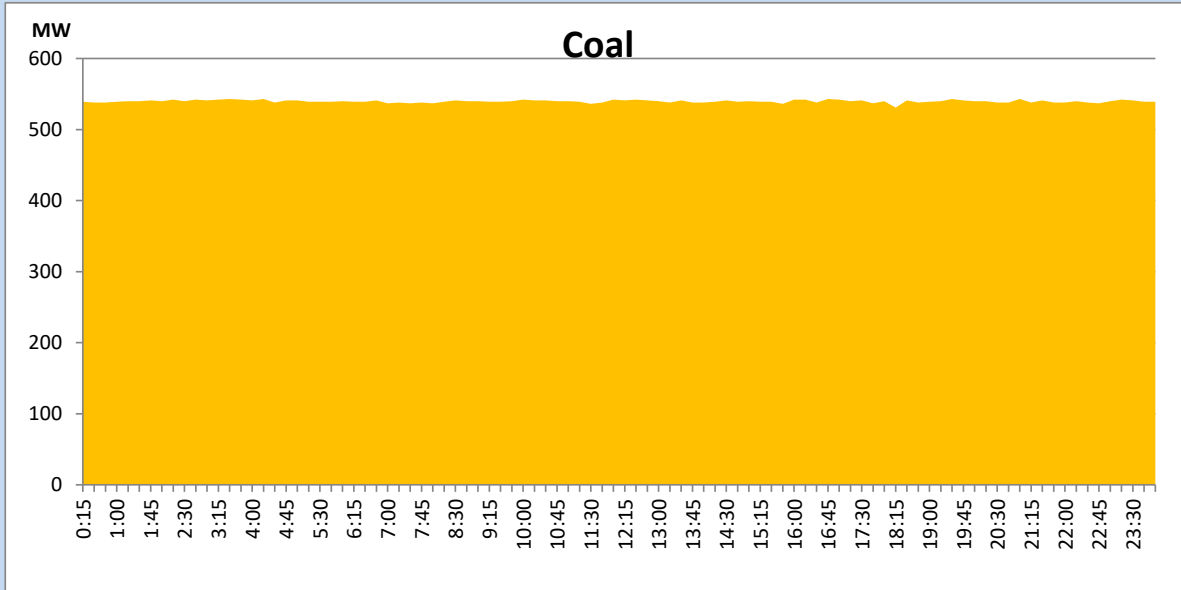
September 17, 2022

Solar and wind data is based on Telemetered Power Stations only



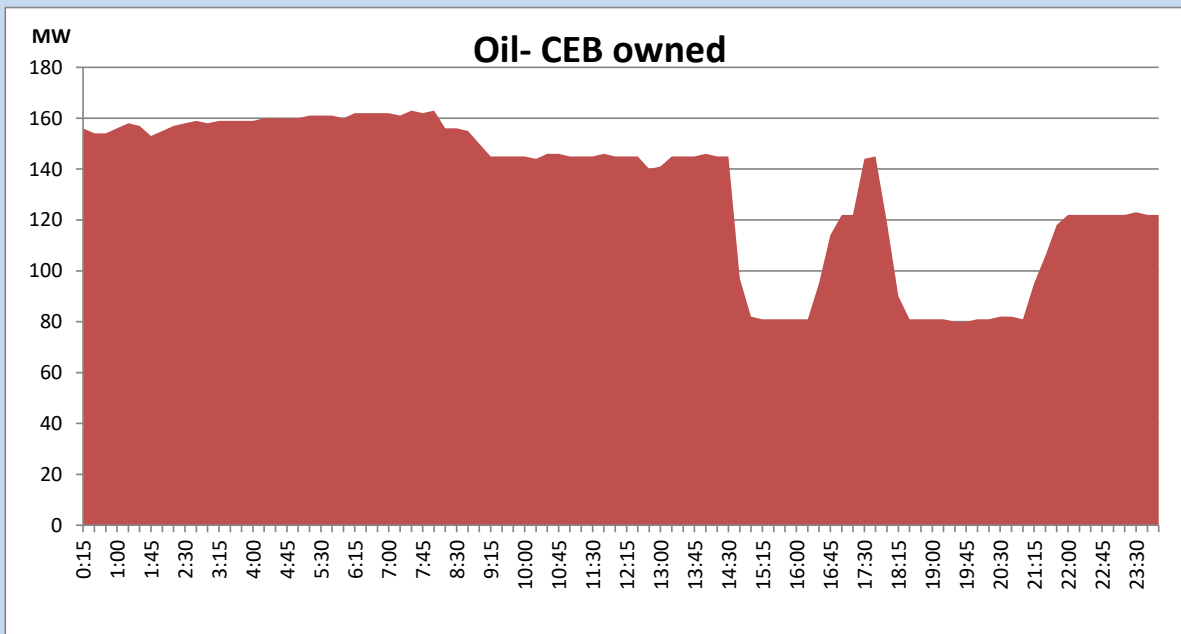
## Coal Generation during the Previous day

September 17, 2022



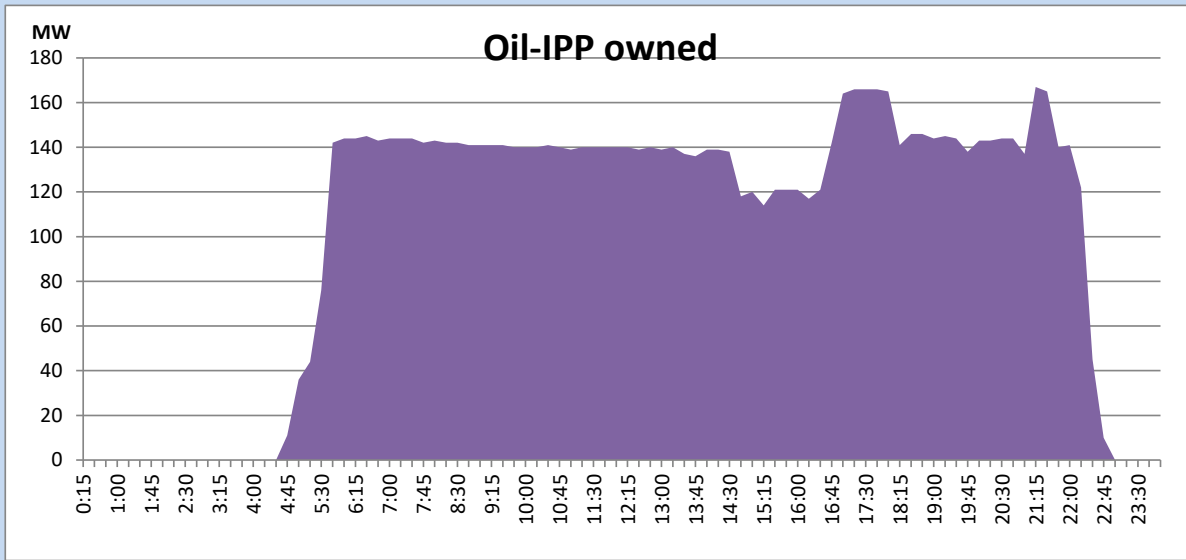
## CEB Oil Plant Generation during the Previous day

September 17, 2022



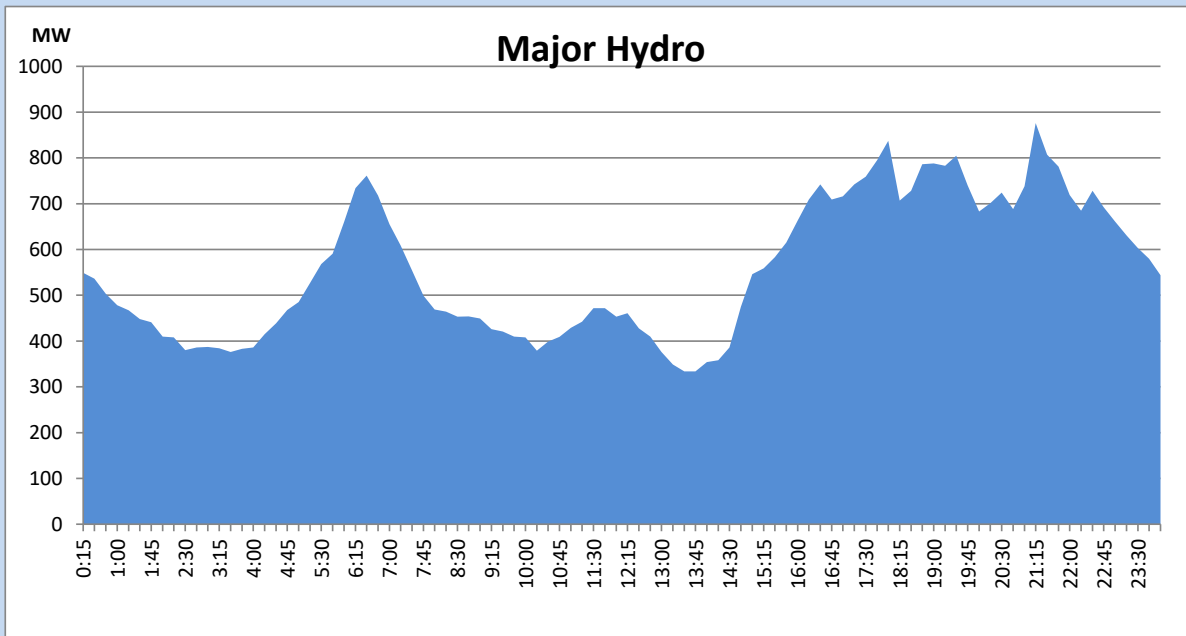
## IPP Oil Plant Generation during the Previous day

September 17, 2022



## Major Hydro Generation during the Previous day

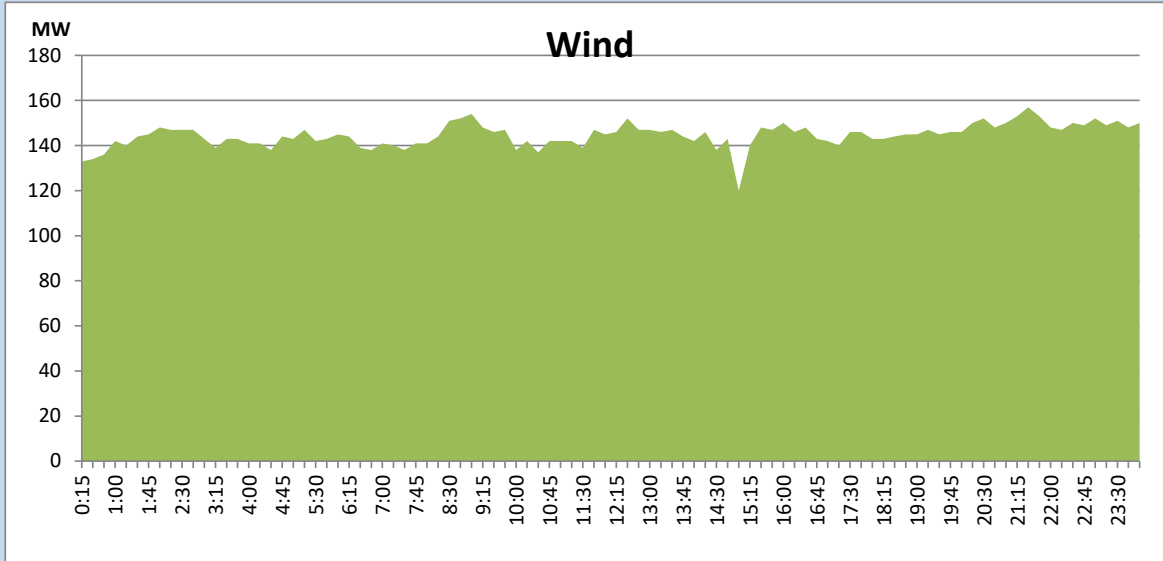
September 17, 2022



## Wind Generation during the Previous day

September 17, 2022

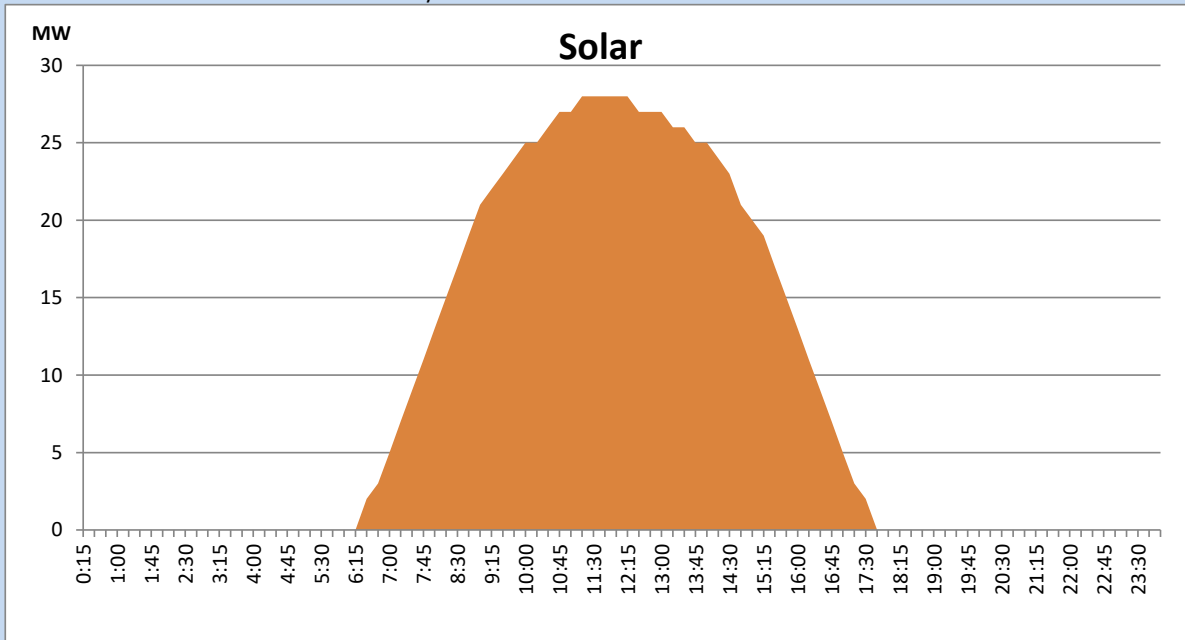
Based on Telemetered Power Stations only



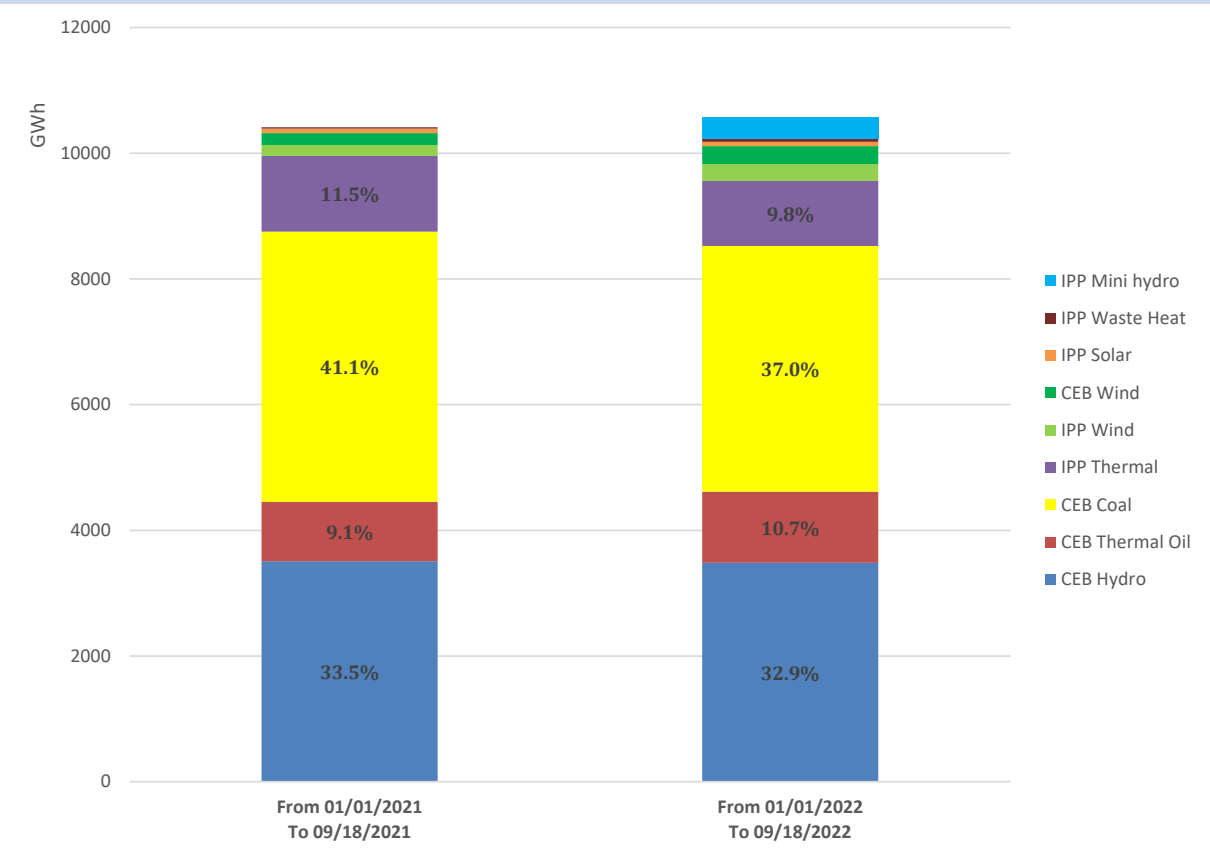
## Solar Generation during the Previous day

September 17, 2022

Based on Telemetered Power Stations only



# Cumulative Dispatch Comparison with Last Year



## Thermal Plant Fuel types

Power Station	Primary Fuel
CEB Thermal	
Sapugaskanda 1	Heavy Fuel
Sapugaskanda 2	Heavy Fuel
Kelanitissa Small Gas Turbines	Auto Diesel
GT 7 - Kelanitissa	Auto Diesel
Kelanitissa CCY	Naphtha or Diesel
Lakvijaya 1	Coal
Lakvijaya 2	Coal
Lakvijaya 3	Coal
Uthuru Janani	Heavy Fuel
Barge CEB	Heavy Fuel

Power Station	Primary Fuel
Private Thermal	
Sojitz - Kelanitissa	Auto Diesel
West Coast	Auto Diesel / Heavy Fuel
ACE Matara	Heavy Fuel
ACE Embilipitiya	Heavy Fuel

### Major Incidents during the day -as reported by CEB morning of

September 19, 2022

- 1) Rotational manual load shedding was carried out from 18:00hrs to 21:00hrs.
- 2) Norton pond started spilling at 08:30 hrs and spilling continues to present hours. Old Laxapana Stage I tripped at 4:28hrs due to failure in control supply. Old Laxapana Stage II unable to resume generation following to the planned pond maintenance work due to problem in station auxiliary system.