

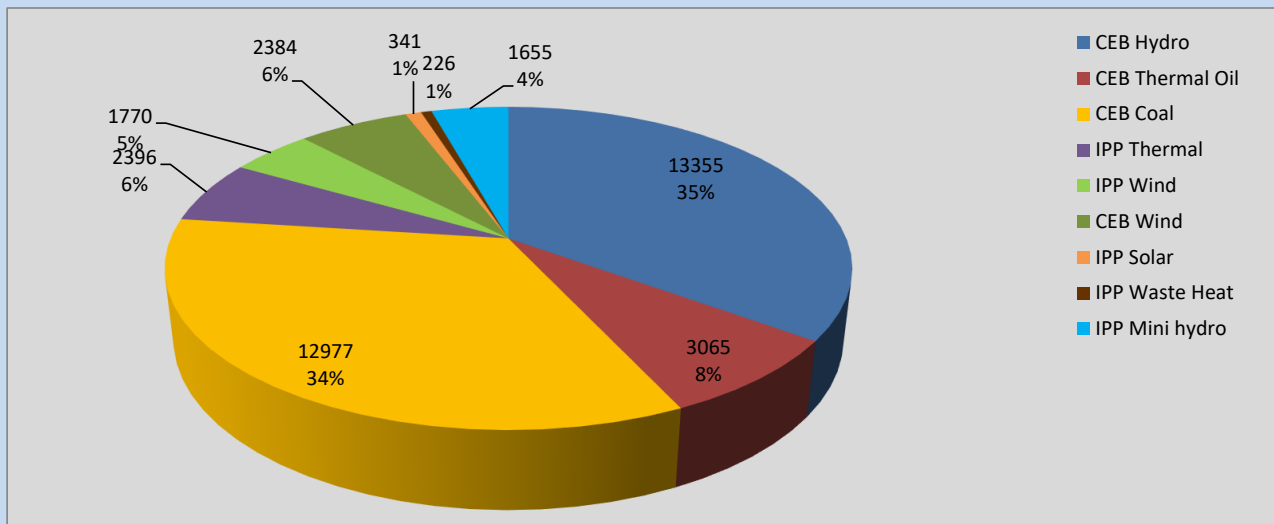
# Generation and Reservoirs Statistics

September 17, 2022



PUBLIC UTILITIES COMMISSION OF SRI LANKA

## Daily Generation Mix in MWh



**Total Generation 38,169 MWh**

Note: Above data is excluding contribution from Roof Top Solar, 1MW Solar and certain Mini Hydro plants

## Cumulative Dispatch

Note: Following data is Excluding contribution from Roof Top Solar, 1MW solar and Mini Hydro plants

### For Current Month

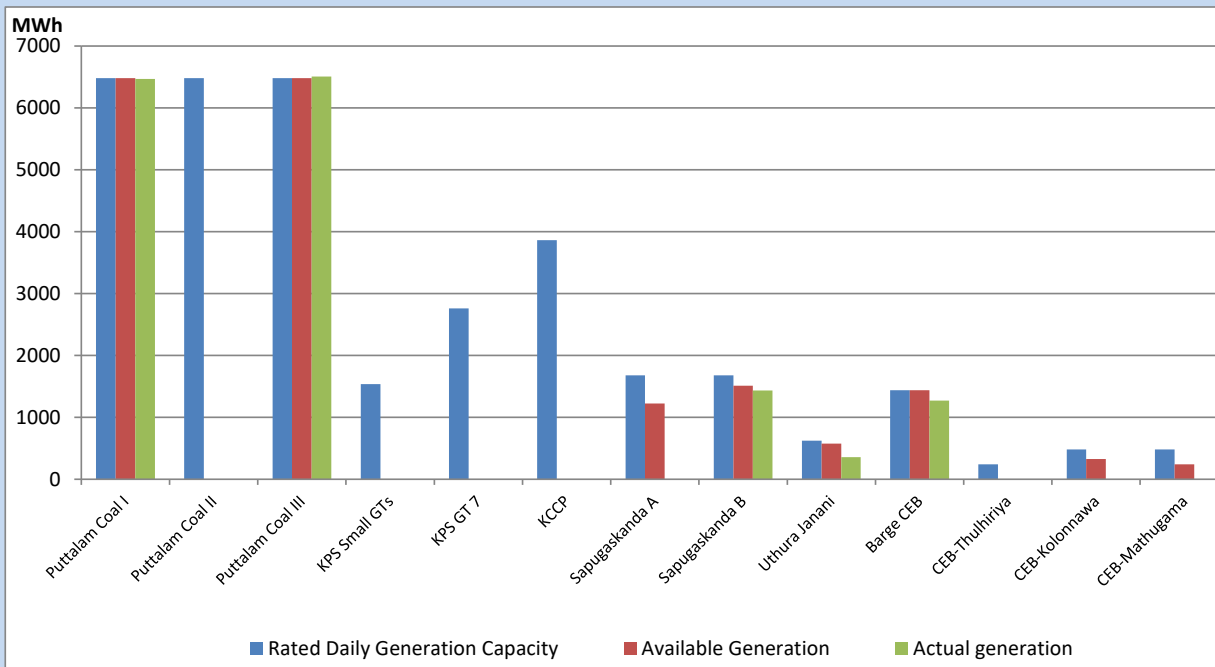
Category	Dispatch (GWh)	
CEB Hydro	336.23	51.16%
CEB Thermal Oil	14.79	2.25%
CEB Coal	187.39	28.51%
IPP Thermal	6.86	1.04%
SPP Wind	30.40	4.63%
CEB Wind	38.42	5.85%
SPP Solar	5.06	0.77%
SPP Solid Waste	3.98	0.61%
Mini Hydro	34.07	5.18%
<b>Total</b>	<b>657.20</b>	

### For Current Year

Category	Dispatch (GWh)	
CEB Hydro	3,469.9	32.92%
CEB Thermal Oil	1,127.1	10.69%
CEB Coal	3,900.5	37.00%
IPP Thermal	1,033.8	9.81%
SPP Wind	261.2	2.48%
CEB Wind	284.5	2.70%
SPP Solar	67.3	0.64%
SPP Solid Waste	53.1	0.50%
Mini Hydro	344.1	3.26%
<b>Total</b>	<b>10,541.3</b>	

## CEB owned Thermal Plant Dispatch

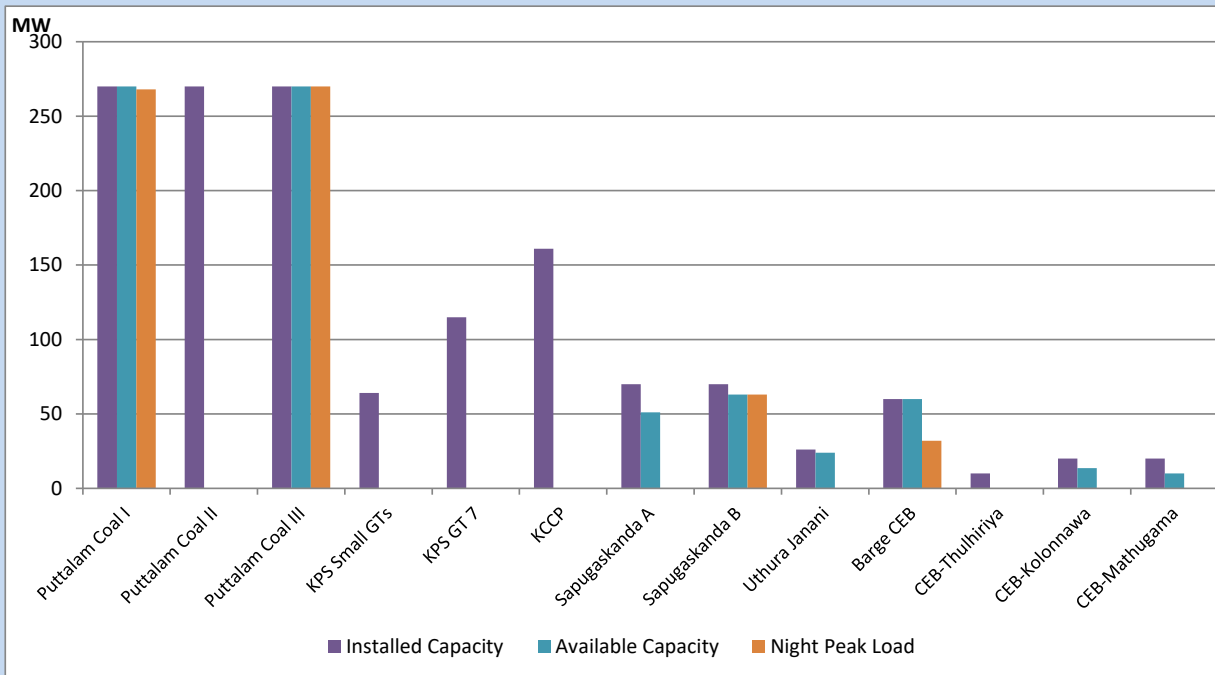
September 17, 2022



Available Generation is estimated based on plant availability at 6.00am on

September 18, 2022

## CEB owned Thermal Plant Loading at the Night Peak



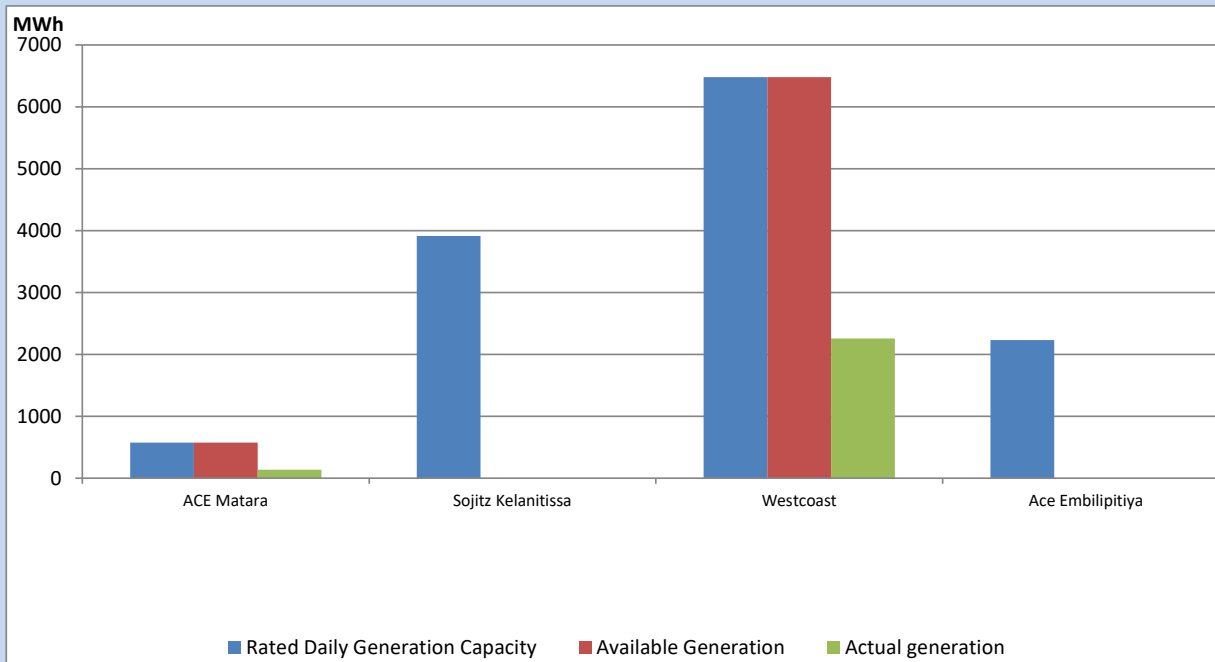
Note- Plant availability is recorded at 6.00 am on

September 18, 2022

## IPP owned Thermal Plant Dispatch

September 17, 2022

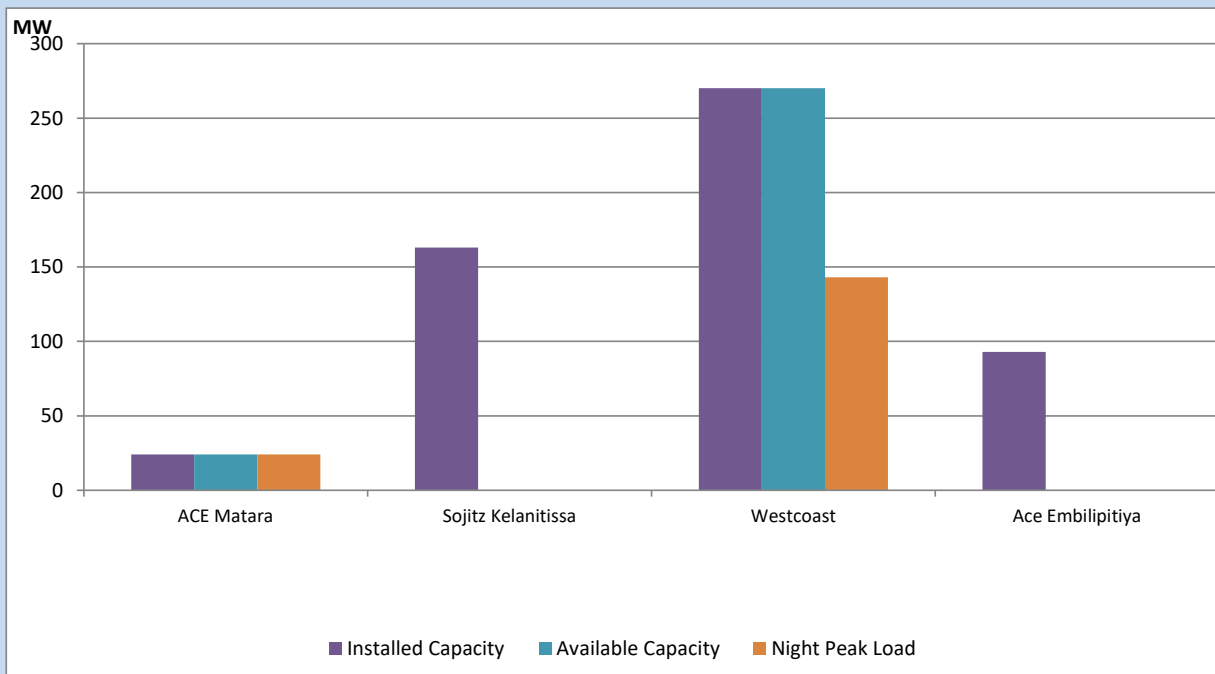
Asia Power, V Power Pallekale, Vpower Galle, V Power Horana, Vpower Hambantota, Vpower Valachchena and Altaqa Mahiyanganaya are not available due to expiration of PPAs



Available Generation is estimated based on plant availability at 6.00am on

September 18, 2022

## IPP owned Thermal Plant Loading at the Night Peak

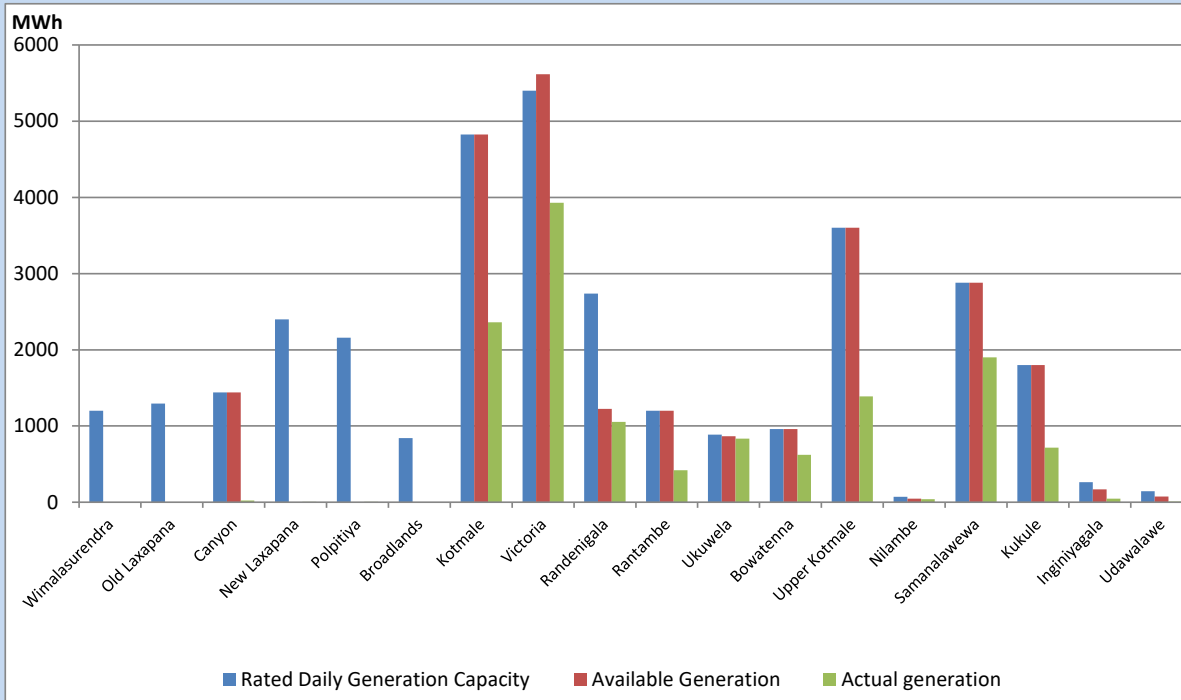


Note- Plant availability is recorded at 6.00 am on

September 18, 2022

## Major Hydro Plant Dispatch

September 17, 2022

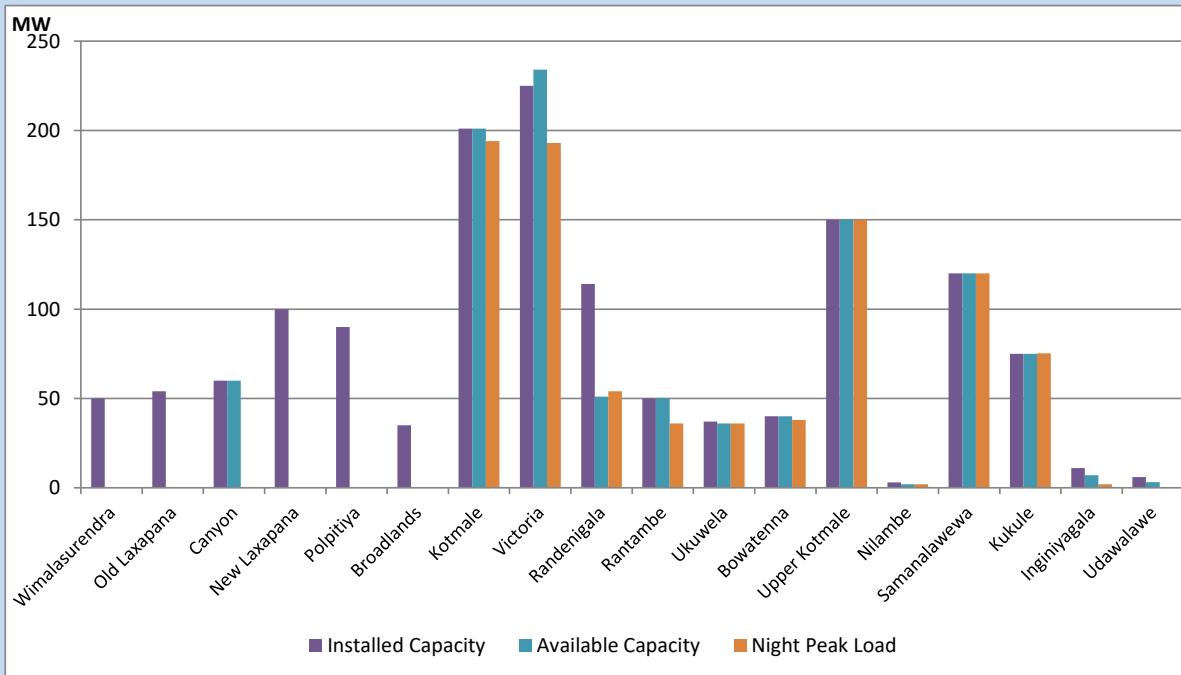


Available Generation is estimated based on plant availability at 6.00am on  
 Broadlands power plant is operating in the Commissioning Stage

September 18, 2022

## Major Hydro Plant Loading at Night Peak

September 17, 2022



Note- Plant availability is recorded at 6.00 am on  
 Broadlands power plant is operating in the Commissioning Stage

September 18, 2022

## Summary of Major Plant performance

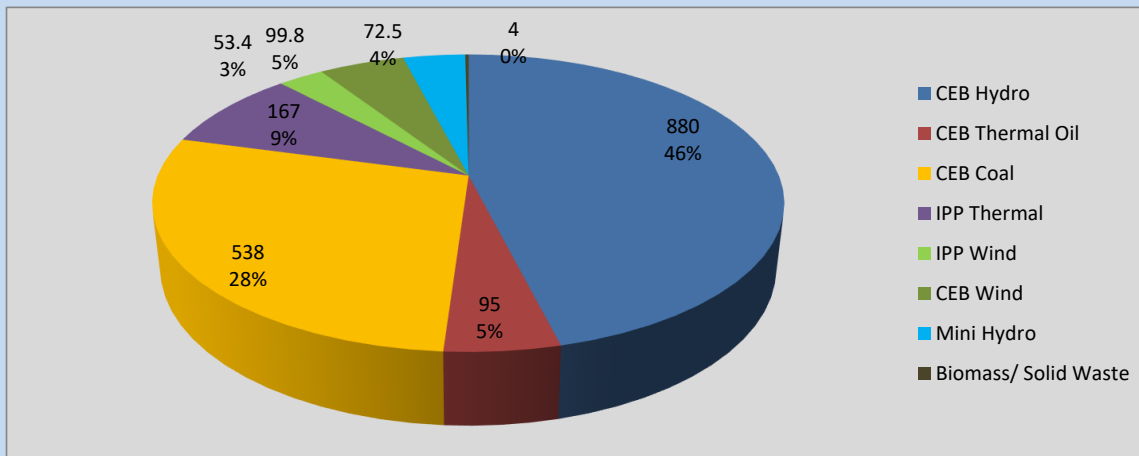
Plant	Installed Capacity	Plant Availability	Night peak Load	Plant Dispatch
	(MW)	(MW)	(MW)	(MWh)
Wimalasurendra	50	0	0	0
Old Laxapana	54	0	0	0
Canyon	60	60	0	24
New Laxapana	100	0	0	5
Polpitiya	90	0	0	5
Broadlands	35	0	0	0
Kotmale	201	201	194	2,360
Victoria	225	234	193	3,929
Randenigala	114	51	54	1,054
Rantambe	50	50	36	421
Ukuwela	37	36	36	835
Bowatenna	40	40	38	622
Upper Kotmale	150	150	150	1,390
Nilambe	3	2	2	39
Samanalawewa	120	120	120	1,900
Kukule	75	75	75	715
Inginiyagala	11	7	2	47
Udawalawe	6	3	0	9
Puttalam Coal I	270	270	268	6,470
Puttalam Coal II	270	0	0	0
Puttalam Coal III	270	270	270	6,507
KPS Small GTs	64	0	0	0
KPS GT 7	115	0	0	0
KCCP	161	0	0	0
Sapugaskanda A	70	51	0	0
Sapugaskanda B	70	63	63	1,436
Uthura Janani	26	24	0	358
Barge CEB	60	60	32	1,271
CEB-Thulhiriya	10	0	0	0
CEB-Kolonnawa	20	14	0	0
CEB-Mathugama	20	10	0	0
ACE Matara	24	24	24	138
Sojitz Kelanitissa	163	0	0	0
West Coast	270	270	143	2,258
ACE Embilipitiya	93	0	0	0
<b>Total</b>	<b>3,397</b>	<b>2,085</b>	<b>1,930</b>	<b>38,169</b>

Plant availability is the availability recorded at 6 am on

September 18, 2022

## Contribution to the Night Peak in MW

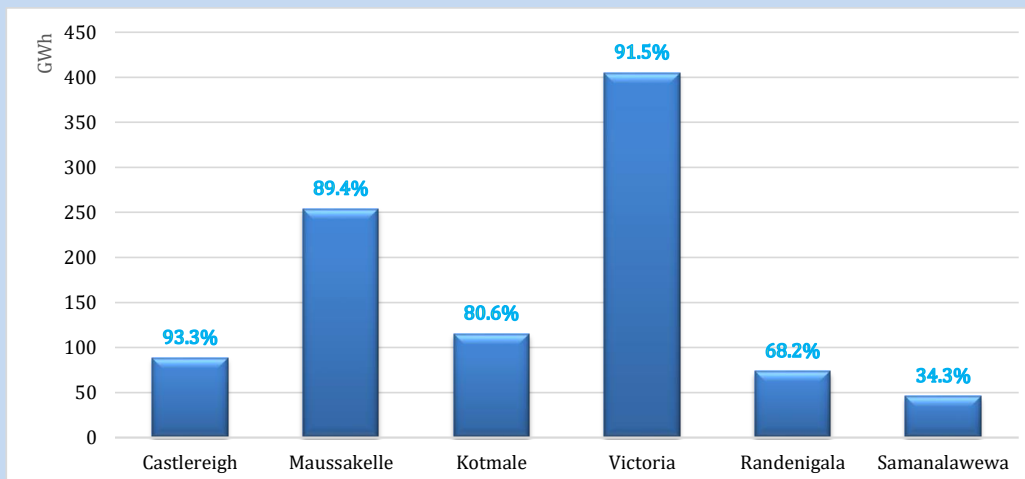
September 17, 2022



Night Peak*	1,909.9 MW
Day Peak	1,663.1 MW
Minimum Demand	1,296.2 MW

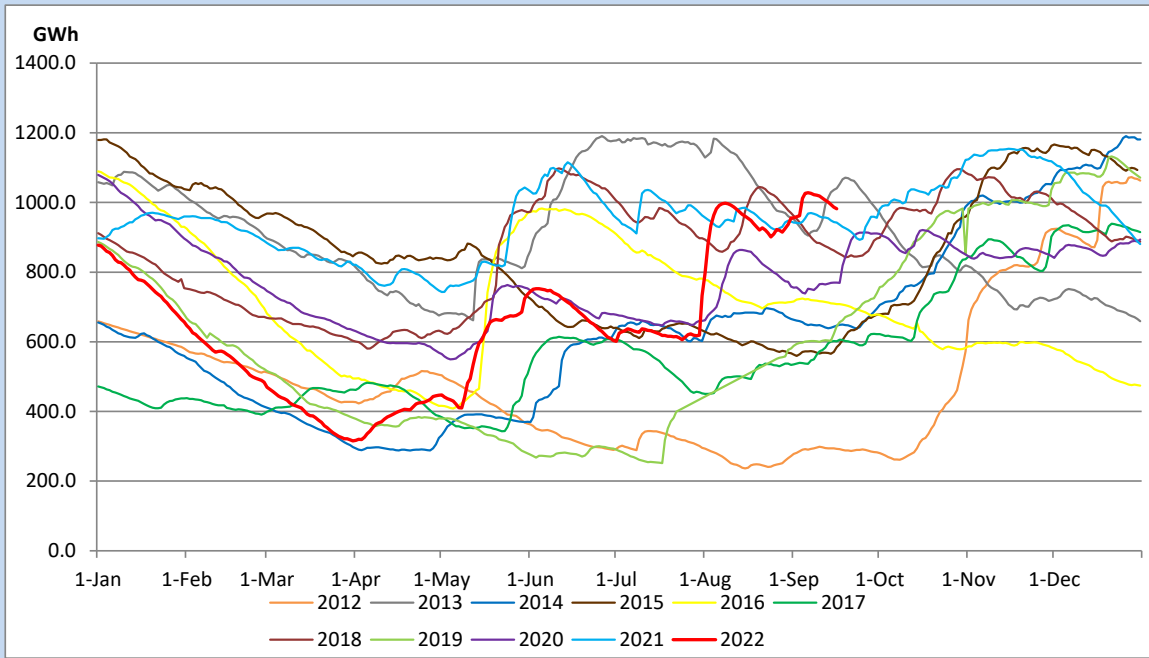
Above figures are excluding contribution from Roof Top Solar, 1MW solar, certain Wind plants and Mini Hydro plants

## Reservoir Levels - as at 06.00 Hr on September 18, 2022

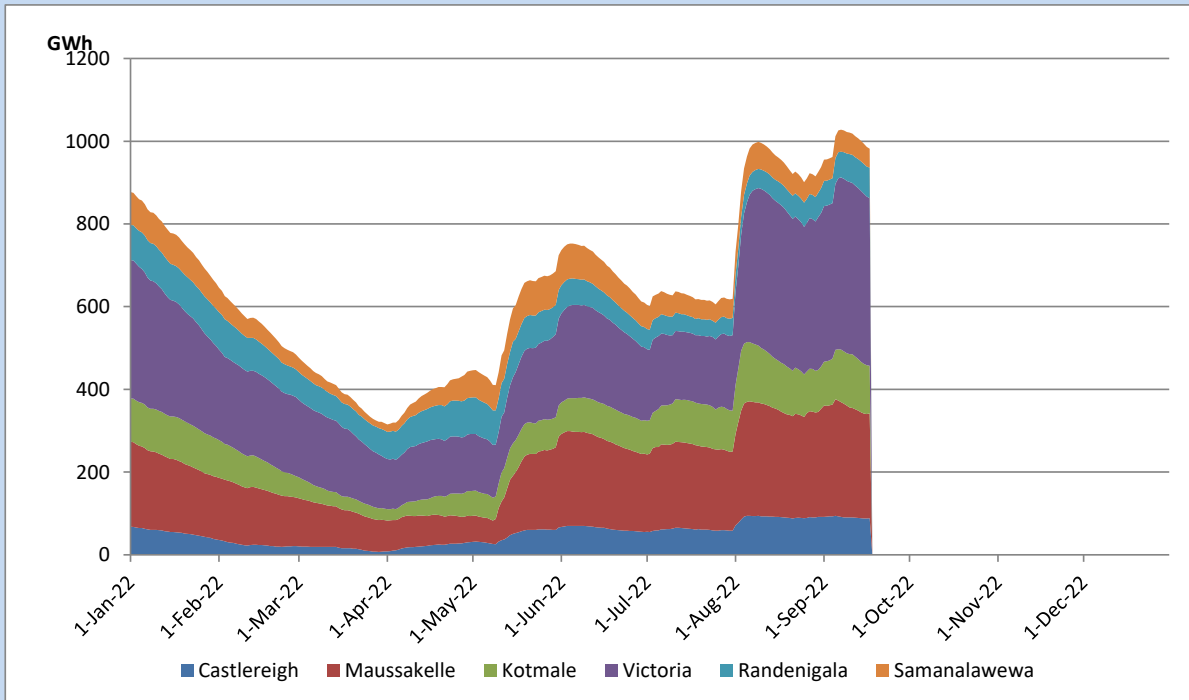


Total Reservoir Level	981.6 GWh
% of Total capacity	81.4%

## Comparison of Total Reservoir Storage Levels with Past Years

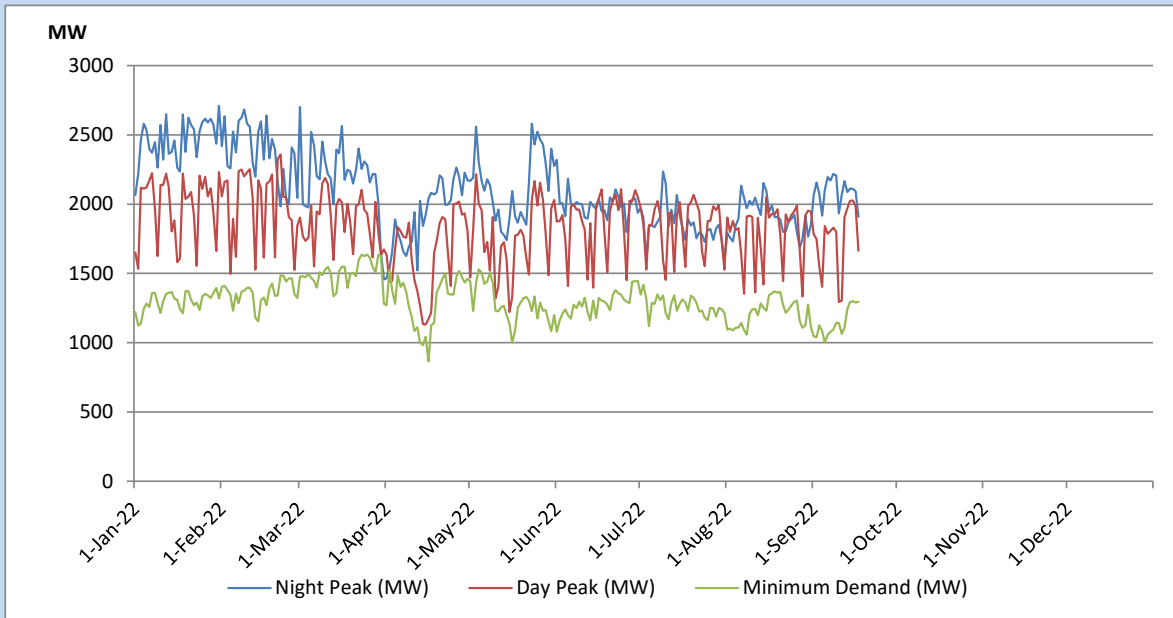


## Variation of Major Hydro Reservoir Levels in the current year (GWh)





## Variation of Demand during the current year

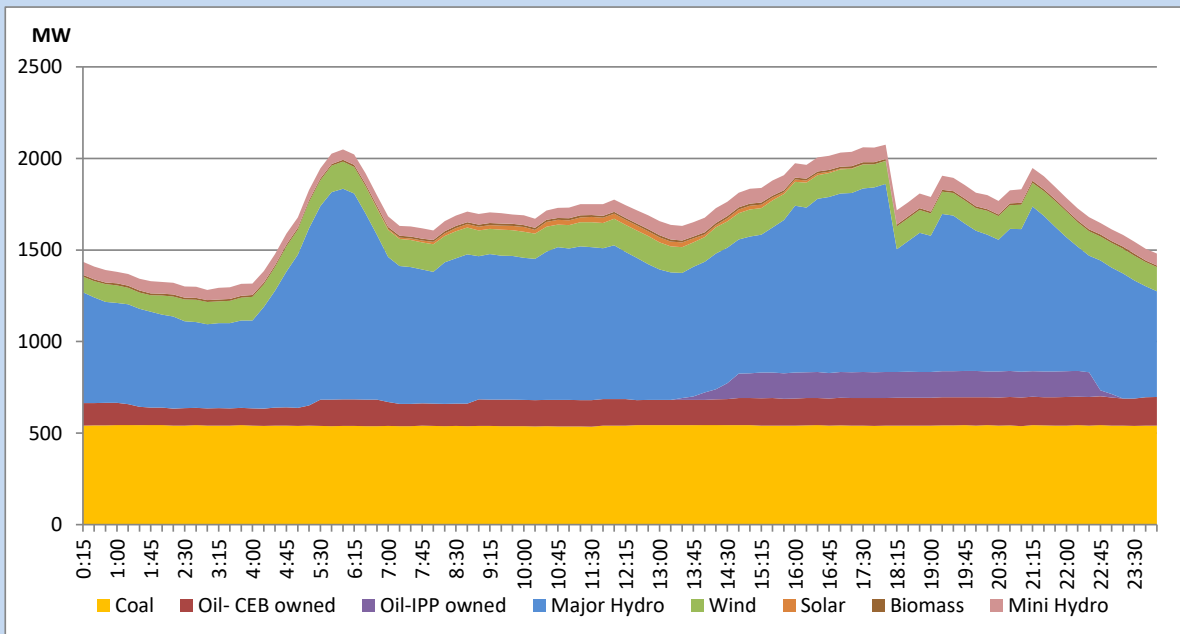


The above figures are excluding contribution from Roof Top Solar, 1MW solar, certain Wind plants and Mini Hydro plants

## Daily Load Curve of the Previous day

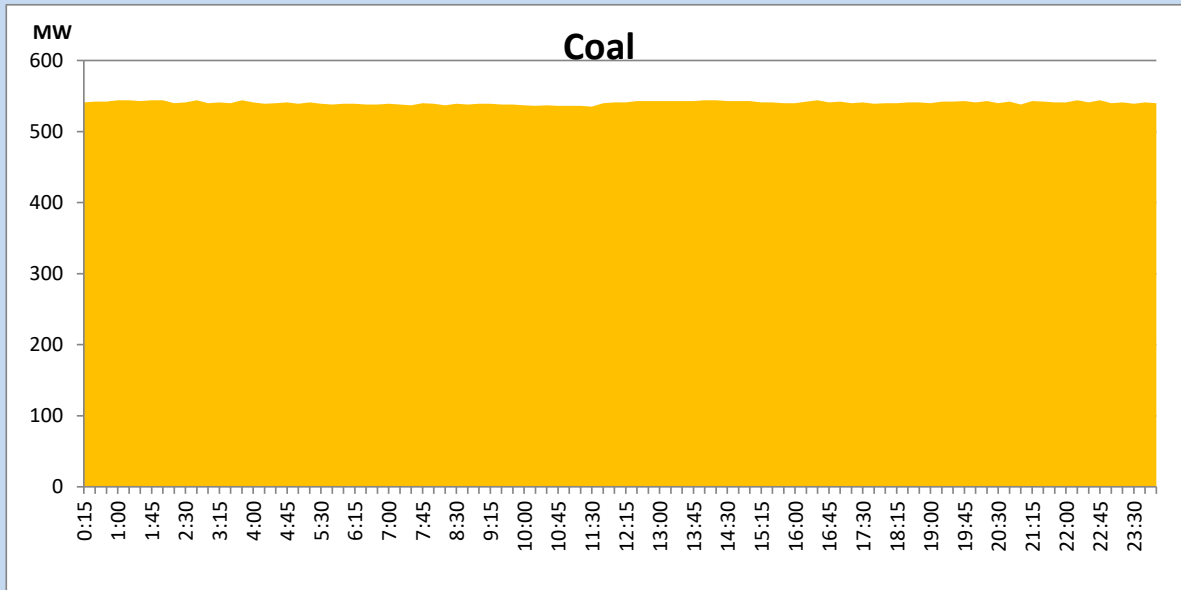
September 16, 2022

Solar and wind data is based on Telemetered Power Stations only



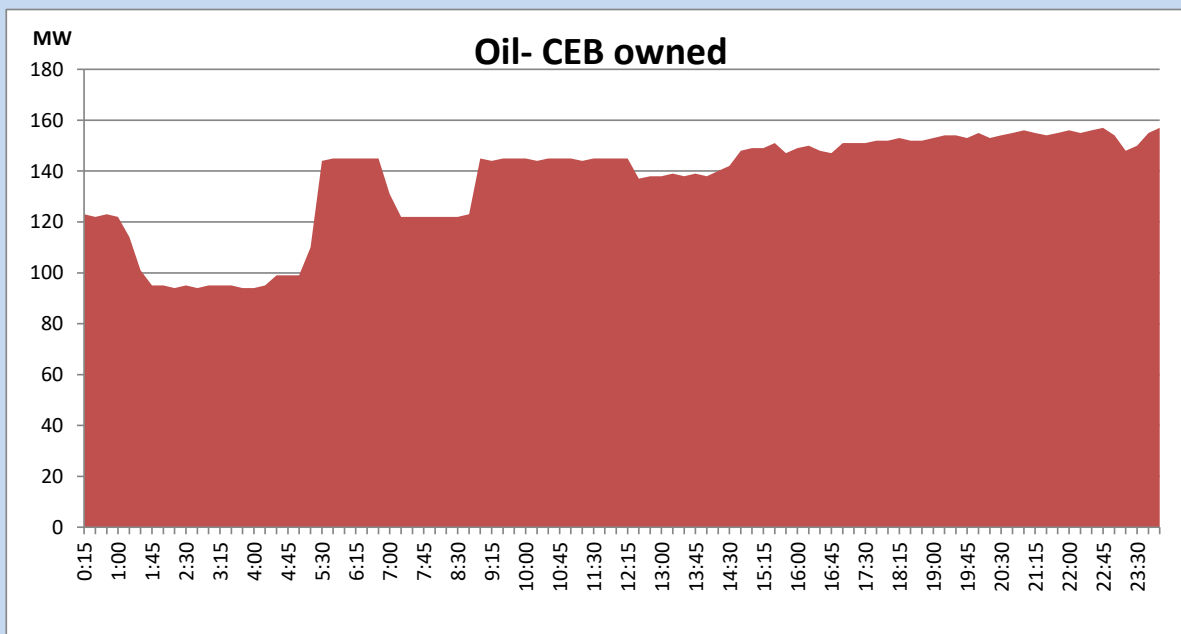
## Coal Generation during the Previous day

September 16, 2022



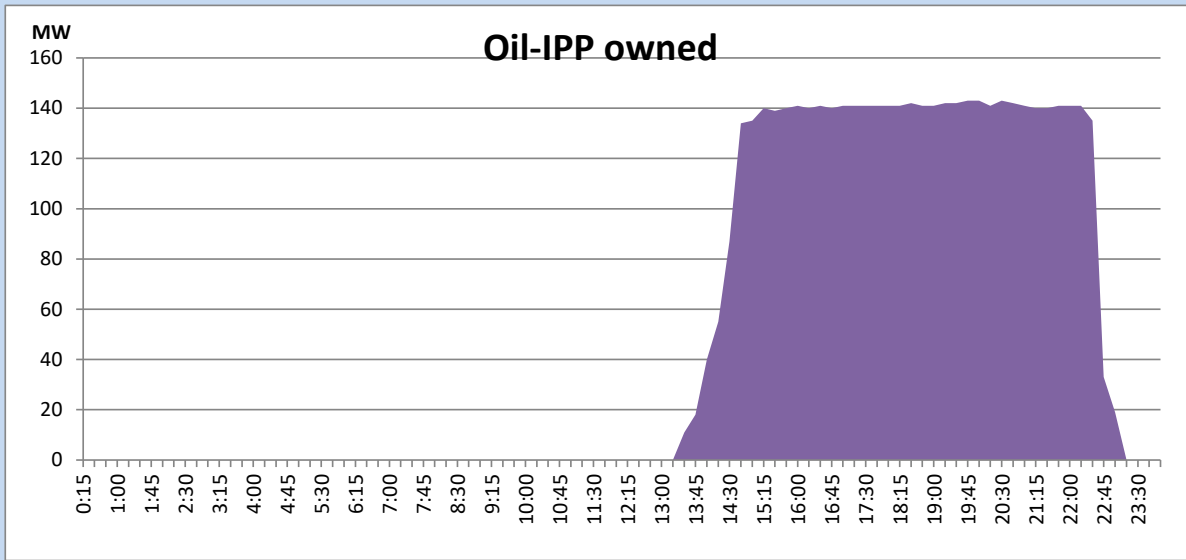
## CEB Oil Plant Generation during the Previous day

September 16, 2022



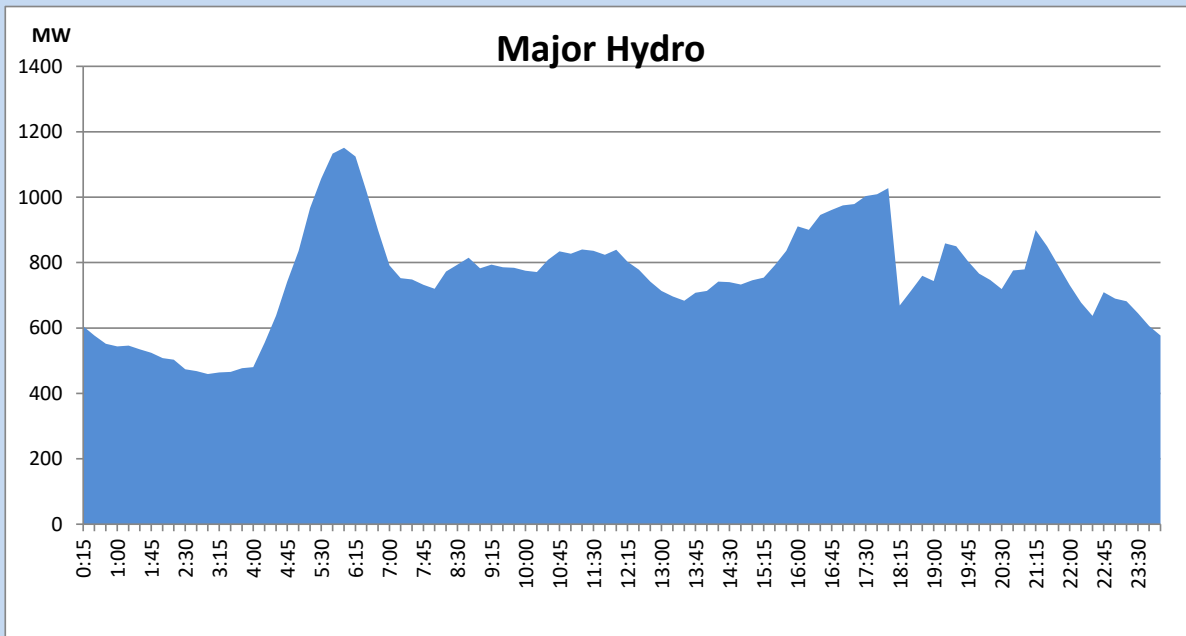
## IPP Oil Plant Generation during the Previous day

September 16, 2022



## Major Hydro Generation during the Previous day

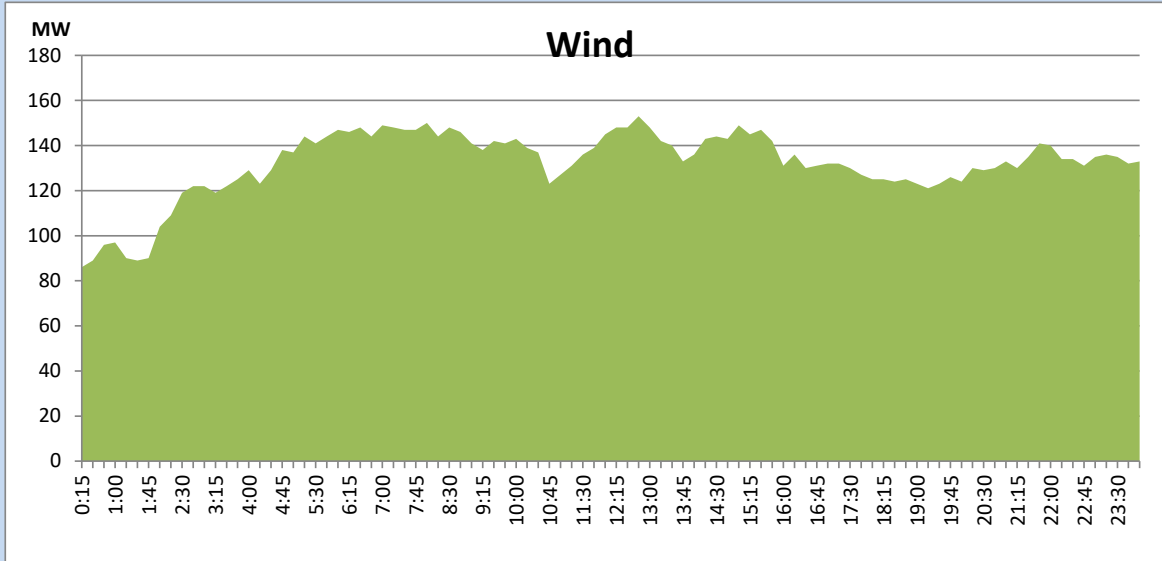
September 16, 2022



## Wind Generation during the Previous day

September 16, 2022

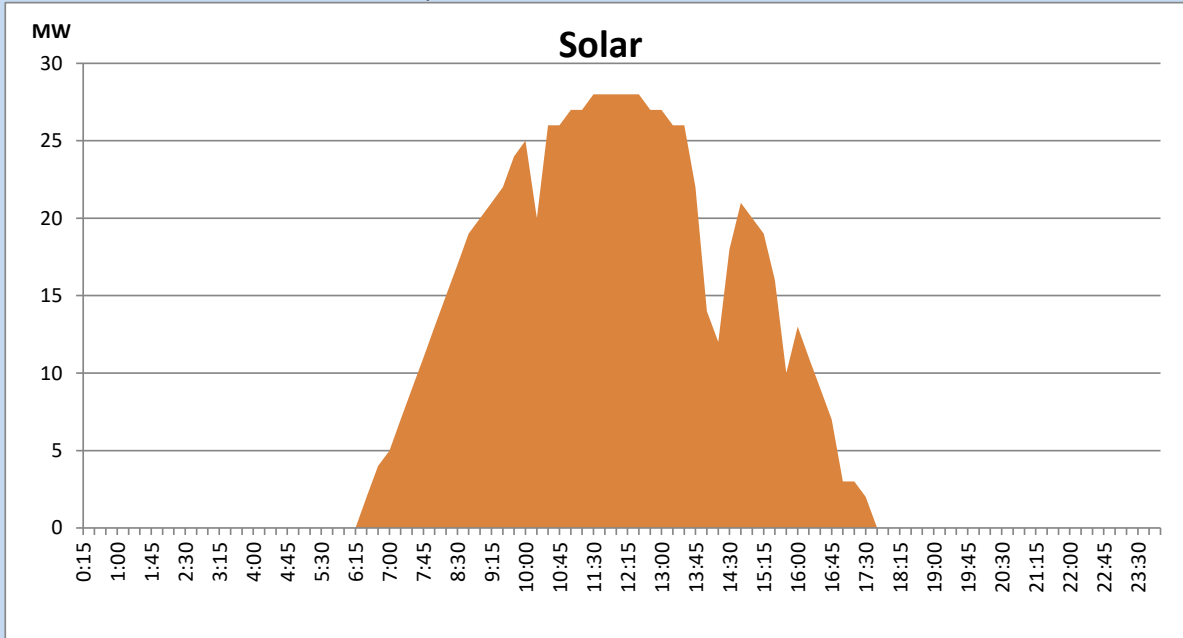
Based on Telemetered Power Stations only



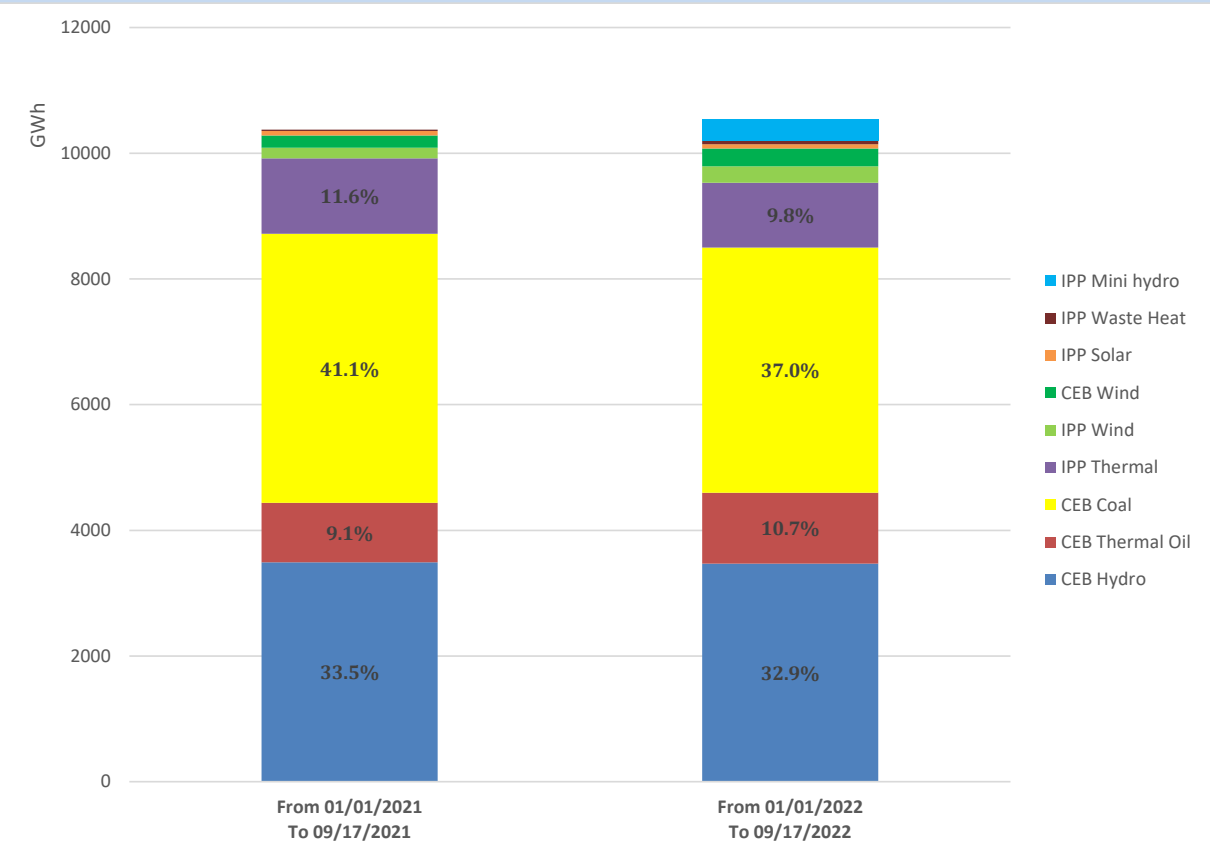
## Solar Generation during the Previous day

September 16, 2022

Based on Telemetered Power Stations only



# Cumulative Dispatch Comparison with Last Year



## Thermal Plant Fuel types

Power Station	Primary Fuel
CEB Thermal	
Sapugaskanda 1	Heavy Fuel
Sapugaskanda 2	Heavy Fuel
Kelanitissa Small Gas Turbines	Auto Diesel
GT 7 - Kelanitissa	Auto Diesel
Kelanitissa CCY	Naphtha or Diesel
Lakvijaya 1	Coal
Lakvijaya 2	Coal
Lakvijaya 3	Coal
Uthuru Janani	Heavy Fuel
Barge CEB	Heavy Fuel

Power Station	Primary Fuel
Private Thermal	
Sojitz - Kelanitissa	Auto Diesel
West Coast	Auto Diesel / Heavy Fuel
ACE Matara	Heavy Fuel
ACE Embilipitiya	Heavy Fuel

### Major Incidents during the day -as reported by CEB morning of

September 18, 2022

- 1) Rotational manual load shedding was carried out from 18:00hrs to 21:00hrs.
- 2) N' Laxapana – Canyon cct tripped from N' Laxapana end at 09:33hrs. The cct was restored at 09:59hrs.
- 3) Kotugoda GSS 132/33kV T/F 03 and 132/33kV T/F 04 tripped along with Feeder 06 at 13:20hrs due to the operation of Earth Fault and Over Current protection. Both T/Fs and all affected feeders were normalized by 14:00hrs except Feeder 06. Feeder 06 is yet to be restored.
- 4) N' Chilaw – Puttalam cct 02 tripped from both ends at 14:41hrs due to the operation of distance protection. The cct was restored at 14:53hrs.
- 5) O'Laxapana Stage I tripped at 4:28hrs(18.09.2022) due to failure in control supply. O'Laxapana Stage I is yet to resume generation.