

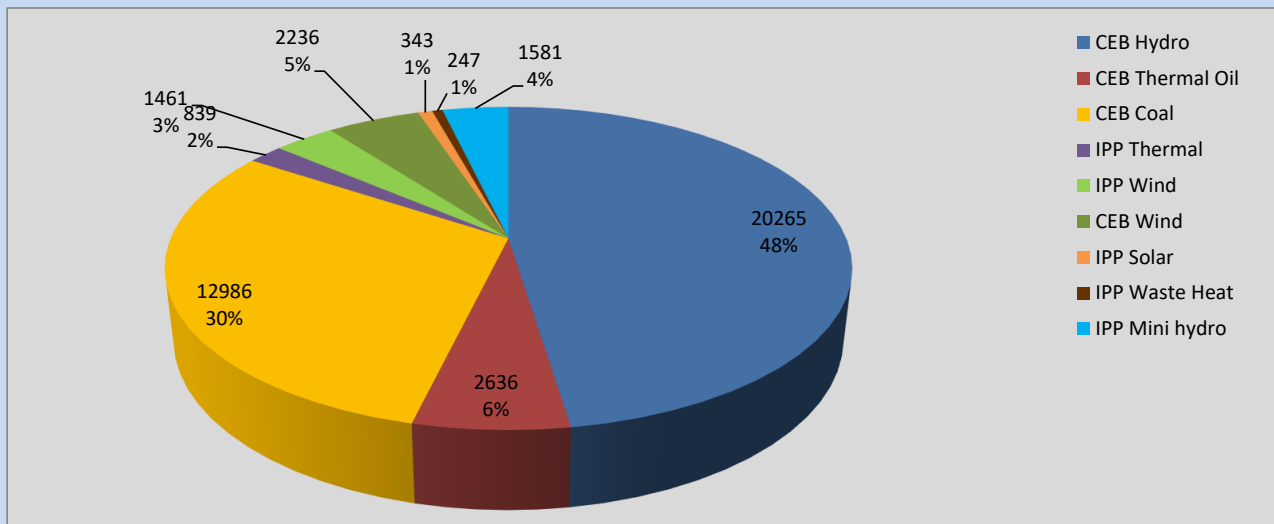
Generation and Reservoirs Statistics

September 15, 2022



PUBLIC UTILITIES COMMISSION OF SRI LANKA

Daily Generation Mix in MWh



Total Generation **42,594 MWh**

Note: Above data is excluding contribution from Roof Top Solar, 1MW Solar and certain Mini Hydro plants

Cumulative Dispatch

Note: Following data is Excluding contribution from Roof Top Solar, 1MW solar and Mini Hydro plants

For Current Month

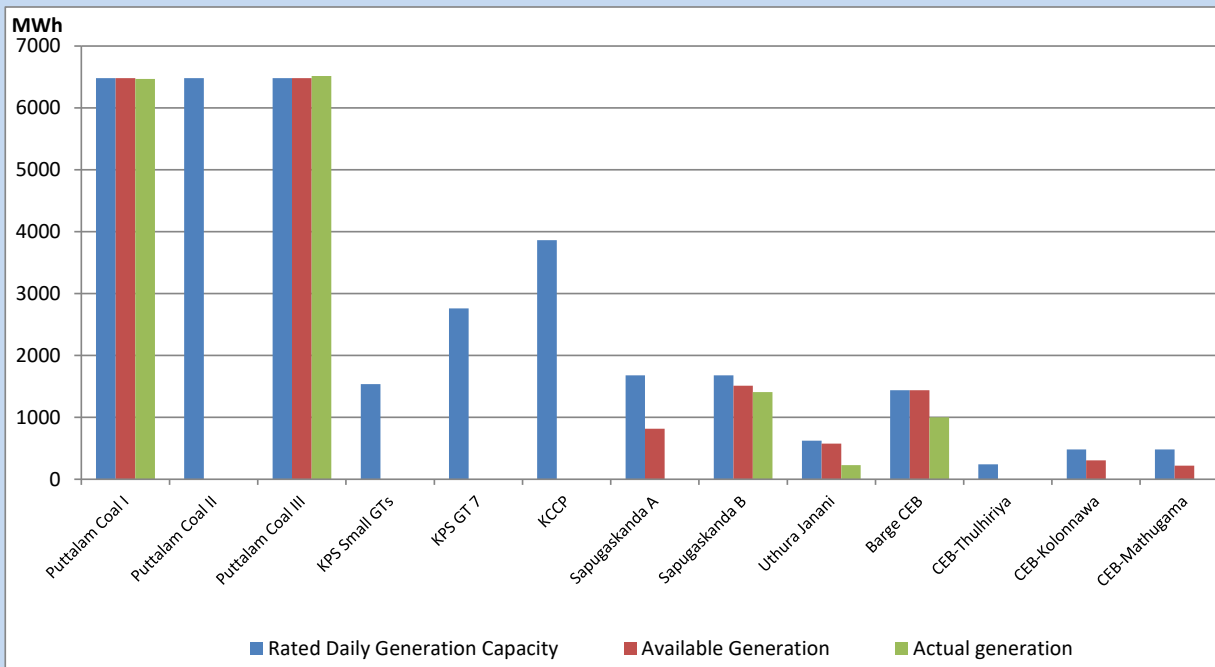
Category	Dispatch (GWh)	
CEB Hydro	304.33	52.74%
CEB Thermal Oil	8.33	1.44%
CEB Coal	161.43	27.97%
IPP Thermal	3.28	0.57%
SPP Wind	27.05	4.69%
CEB Wind	33.84	5.86%
SPP Solar	4.37	0.76%
SPP Solid Waste	3.50	0.61%
Mini Hydro	30.94	5.36%
Total	577.07	

For Current Year

Category	Dispatch (GWh)	
CEB Hydro	3,438.0	32.86%
CEB Thermal Oil	1,120.7	10.71%
CEB Coal	3,874.5	37.04%
IPP Thermal	1,030.2	9.85%
SPP Wind	257.9	2.46%
CEB Wind	279.9	2.68%
SPP Solar	66.6	0.64%
SPP Solid Waste	52.7	0.50%
Mini Hydro	341.0	3.26%
Total	10,461.2	

CEB owned Thermal Plant Dispatch

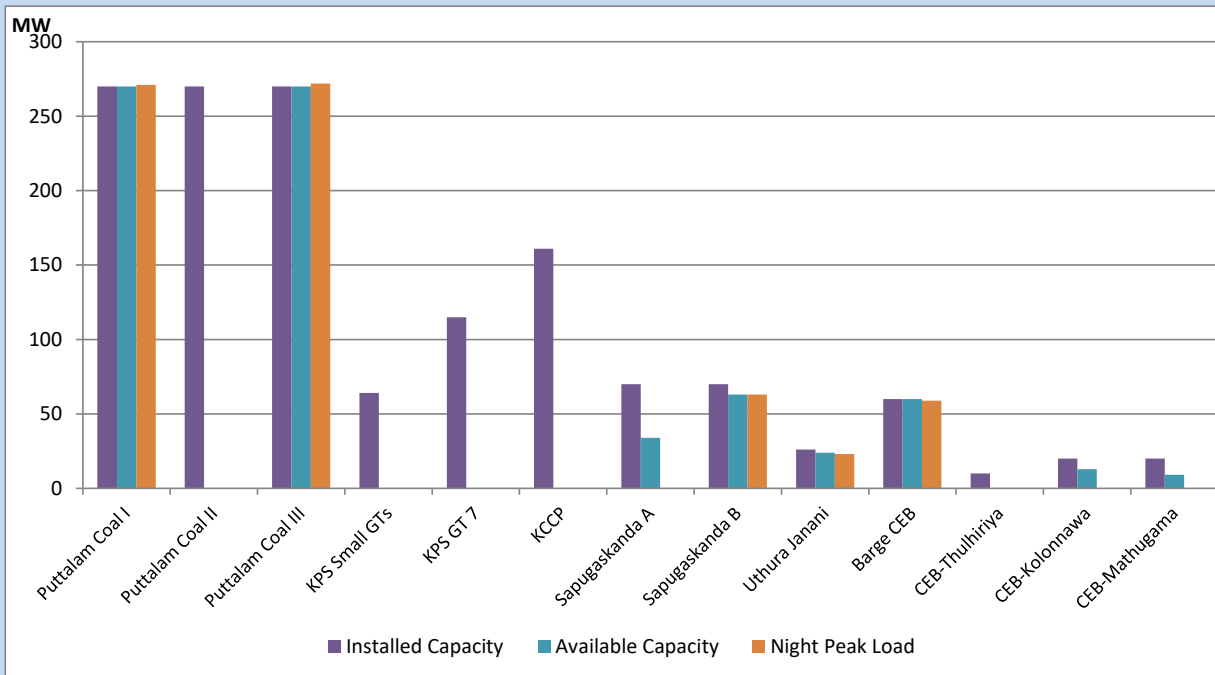
September 15, 2022



Available Generation is estimated based on plant availability at 6.00am on

September 16, 2022

CEB owned Thermal Plant Loading at the Night Peak



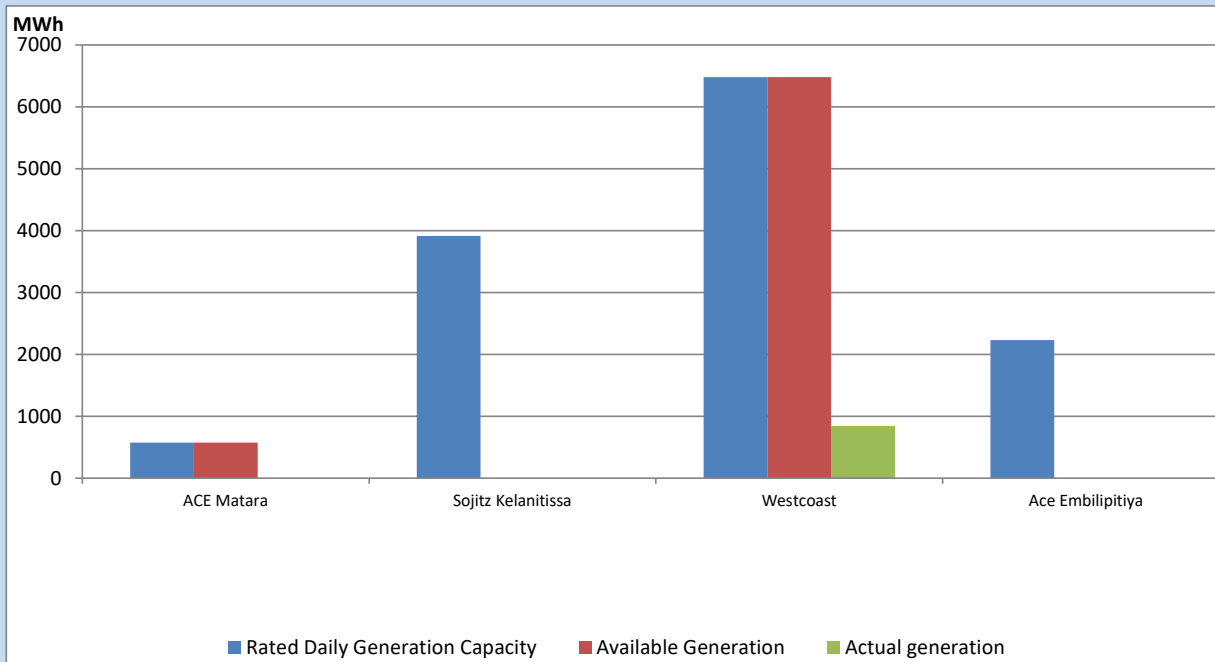
Note- Plant availability is recorded at 6.00 am on

September 16, 2022

IPP owned Thermal Plant Dispatch

September 15, 2022

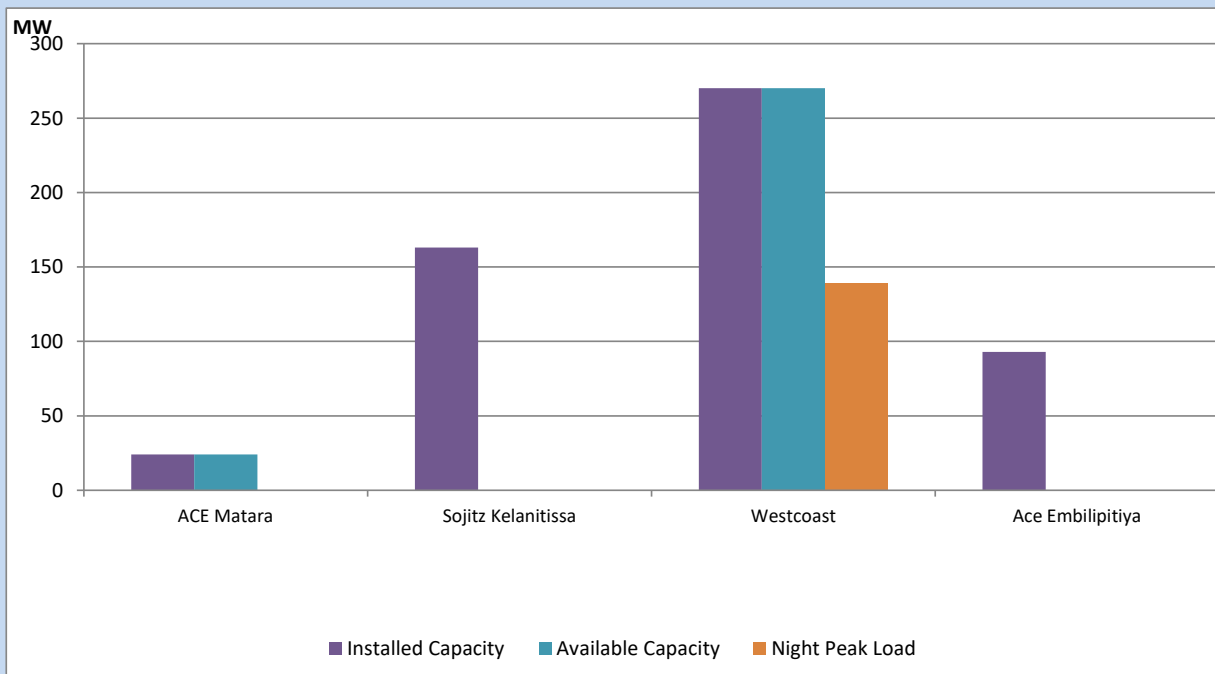
Asia Power, V Power Pallekale, Vpower Galle, V Power Horana, Vpower Hambantota, Vpower Valachchena and Altaqa Mahiyanganaya are not available due to expiration of PPAs



Available Generation is estimated based on plant availability at 6.00am on

September 16, 2022

IPP owned Thermal Plant Loading at the Night Peak

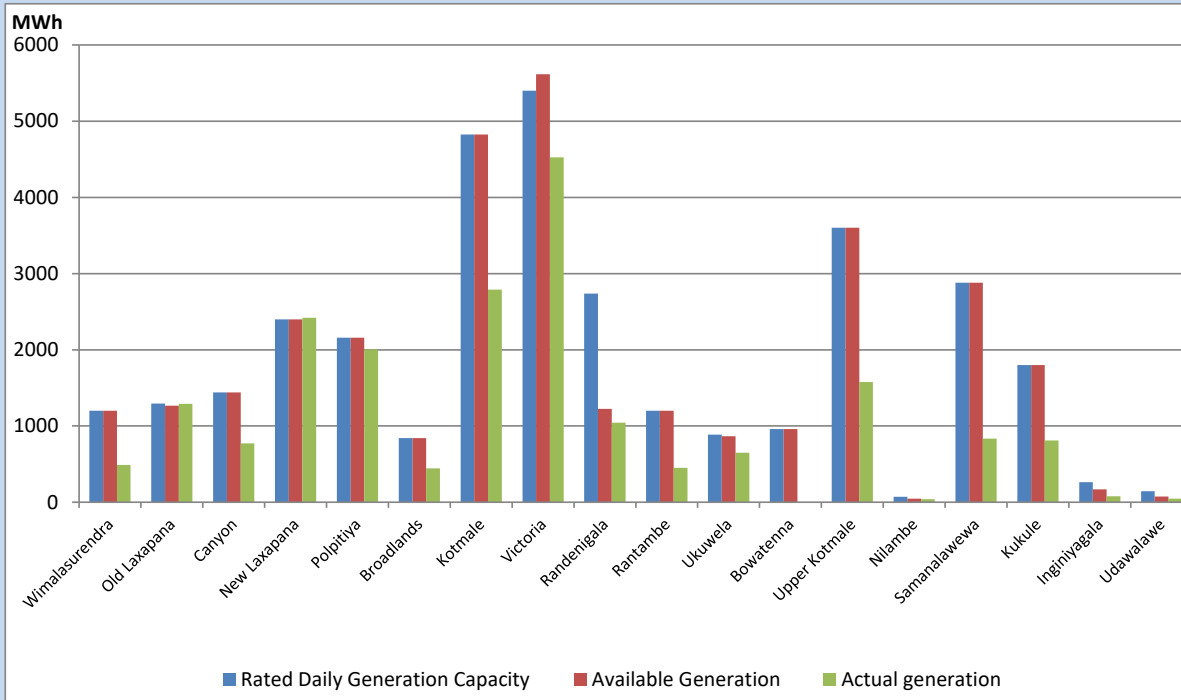


Note- Plant availability is recorded at 6.00 am on

September 16, 2022

Major Hydro Plant Dispatch

September 15, 2022

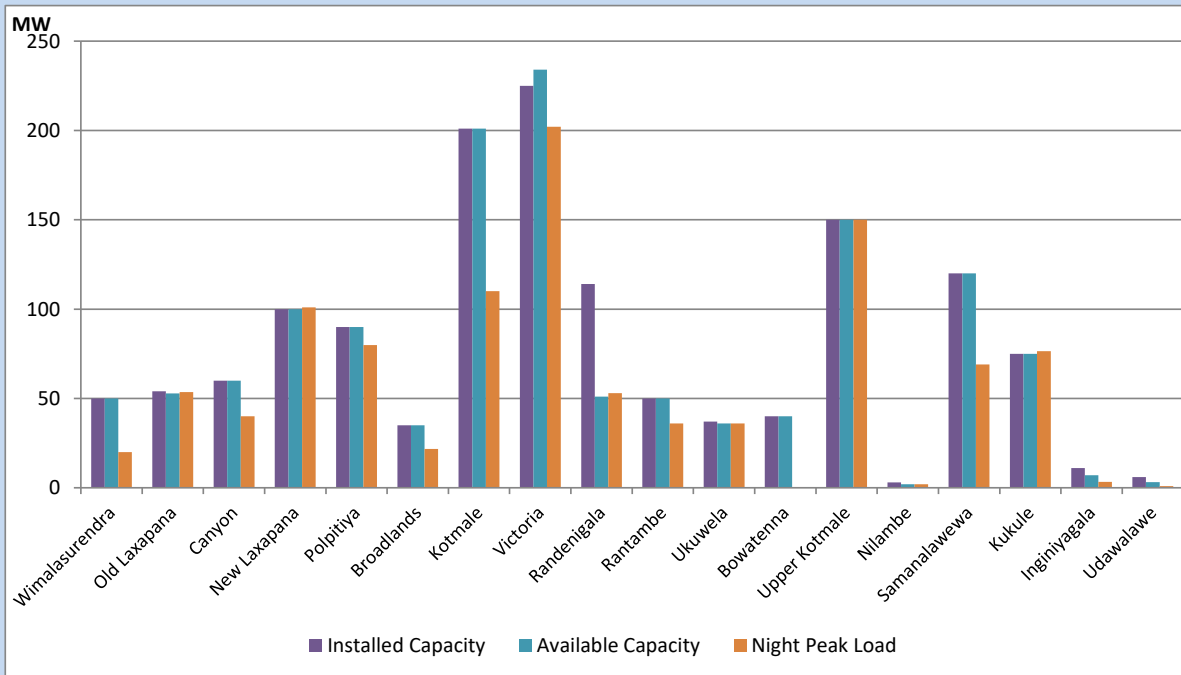


Available Generation is estimated based on plant availability at 6.00am on
Broadlands power plant is operating in the Commissioning Stage

September 16, 2022

Major Hydro Plant Loading at Night Peak

September 15, 2022



Note- Plant availability is recorded at 6.00 am on
Broadlands power plant is operating in the Commissioning Stage

September 16, 2022

Summary of Major Plant performance

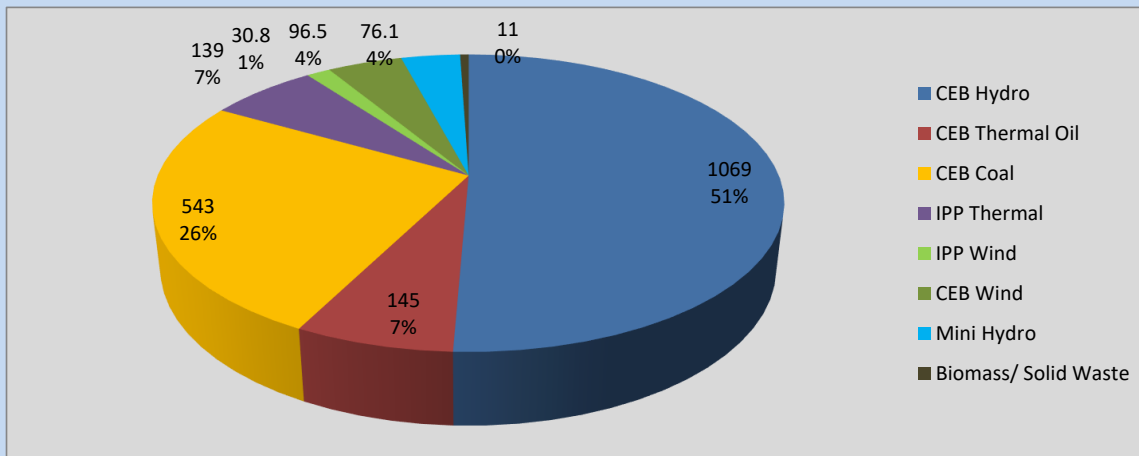
Plant	Installed Capacity	Plant Availability	Night peak Load	Plant Dispatch
	(MW)	(MW)	(MW)	(MWh)
Wimalasurendra	50	50	20	490
Old Laxapana	54	53	54	1,291
Canyon	60	60	40	770
New Laxapana	100	100	101	2,420
Polpitiya	90	90	80	2,005
Broadlands	35	35	22	444
Kotmale	201	201	110	2,790
Victoria	225	234	202	4,526
Randenigala	114	51	53	1,044
Rantambe	50	50	36	451
Ukuwela	37	36	36	648
Bowatenna	40	40	0	0
Upper Kotmale	150	150	150	1,578
Nilambe	3	2	2	40
Samanalawewa	120	120	69	834
Kukule	75	75	77	811
Inginiyagala	11	7	3	77
Udawalawe	6	3	1	46
Puttalam Coal I	270	270	271	6,469
Puttalam Coal II	270	0	0	0
Puttalam Coal III	270	270	272	6,517
KPS Small GTs	64	0	0	0
KPS GT 7	115	0	0	0
KCCP	161	0	0	0
Sapugaskanda A	70	34	0	0
Sapugaskanda B	70	63	63	1,407
Uthura Janani	26	24	23	228
Barge CEB	60	60	59	1,001
CEB-Thulhiriya	10	0	0	0
CEB-Kolonnawa	20	13	0	0
CEB-Mathugama	20	9	0	0
ACE Matara	24	24	0	0
Sojitz Kelanitissa	163	0	0	0
West Coast	270	270	139	839
ACE Embilipitiya	93	0	0	0
Total	3,397	2,394	2,096	42,594

Plant availability is the availability recorded at 6 am on

September 16, 2022

Contribution to the Night Peak in MW

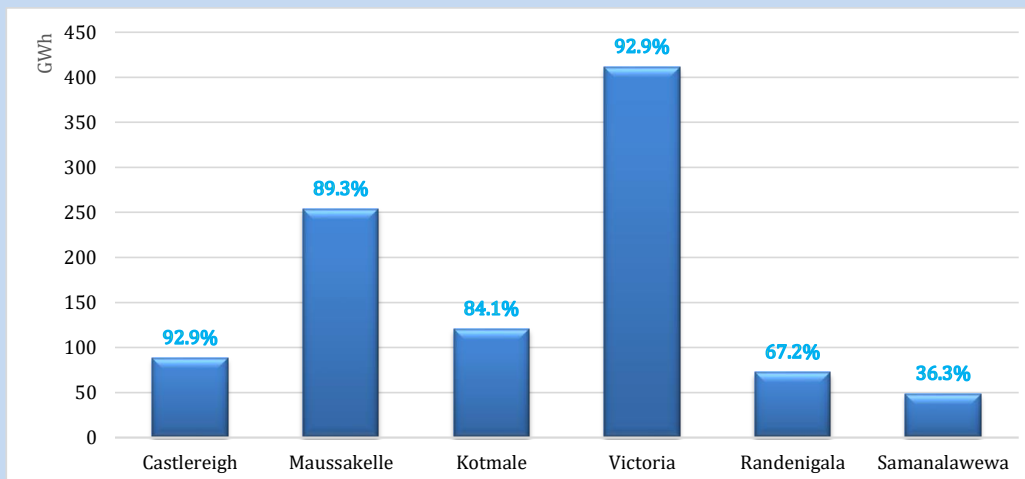
September 15, 2022



Night Peak*	2,110.4 MW
Day Peak	2,025.0 MW
Minimum Demand	1,298.7 MW

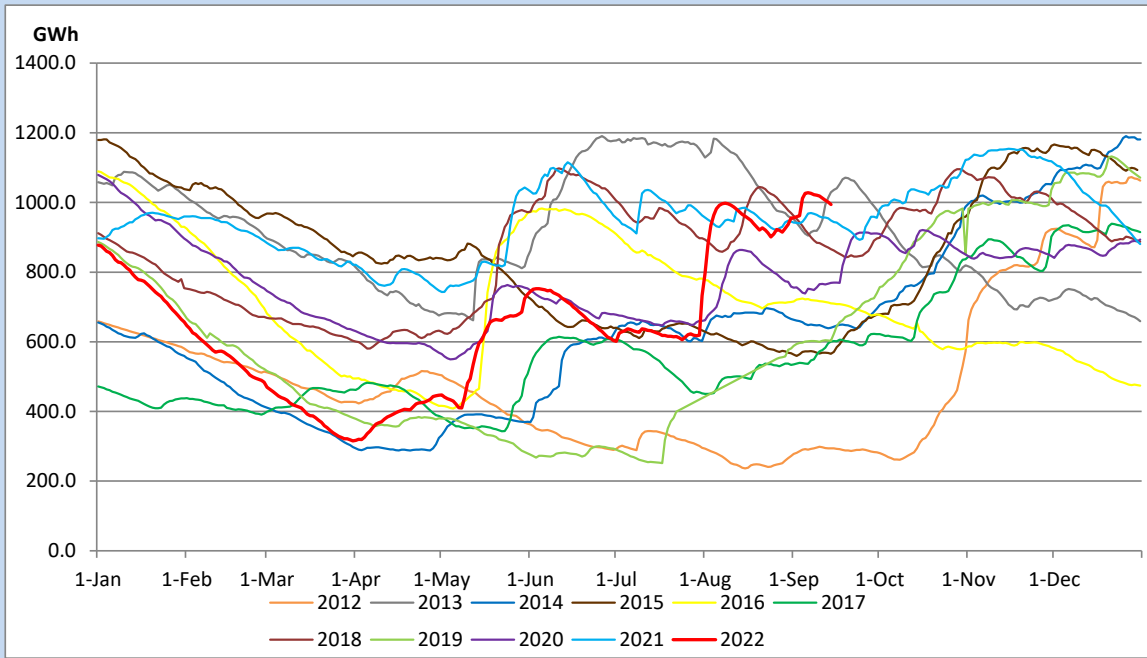
Above figures are excluding contribution from Roof Top Solar, 1MW solar, certain Wind plants and Mini Hydro plants

Reservoir Levels - as at 06.00 Hr on September 16, 2022

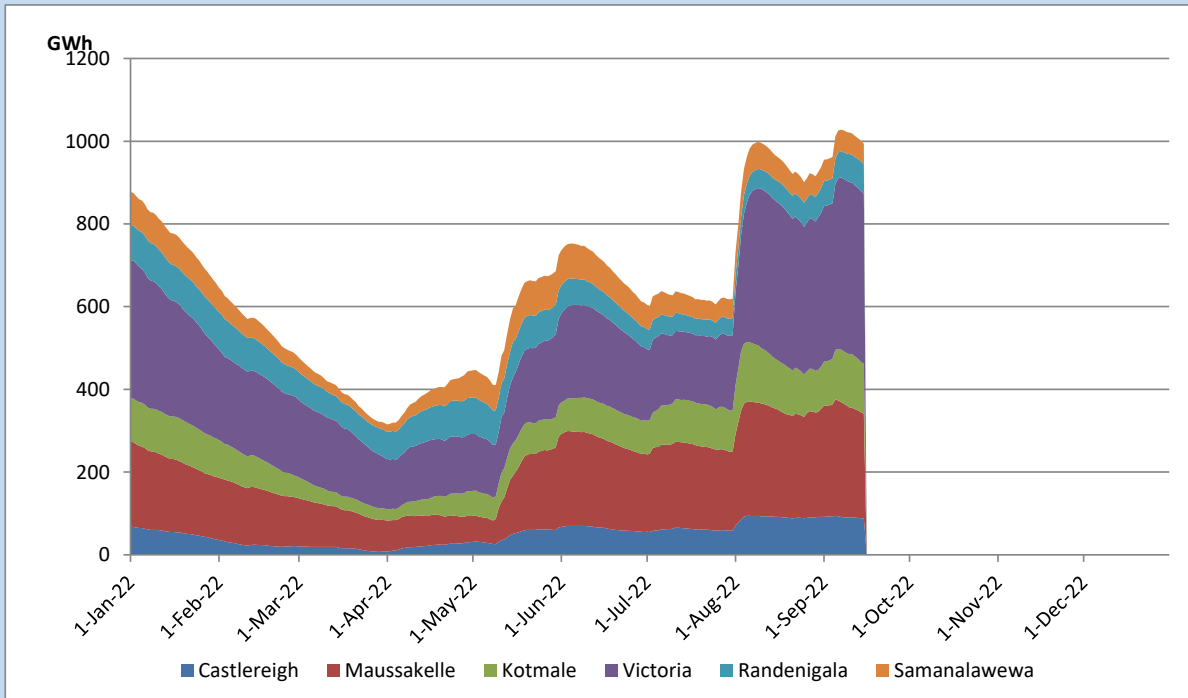


Total Reservoir Level	993.7 GWh
% of Total capacity	82.5%

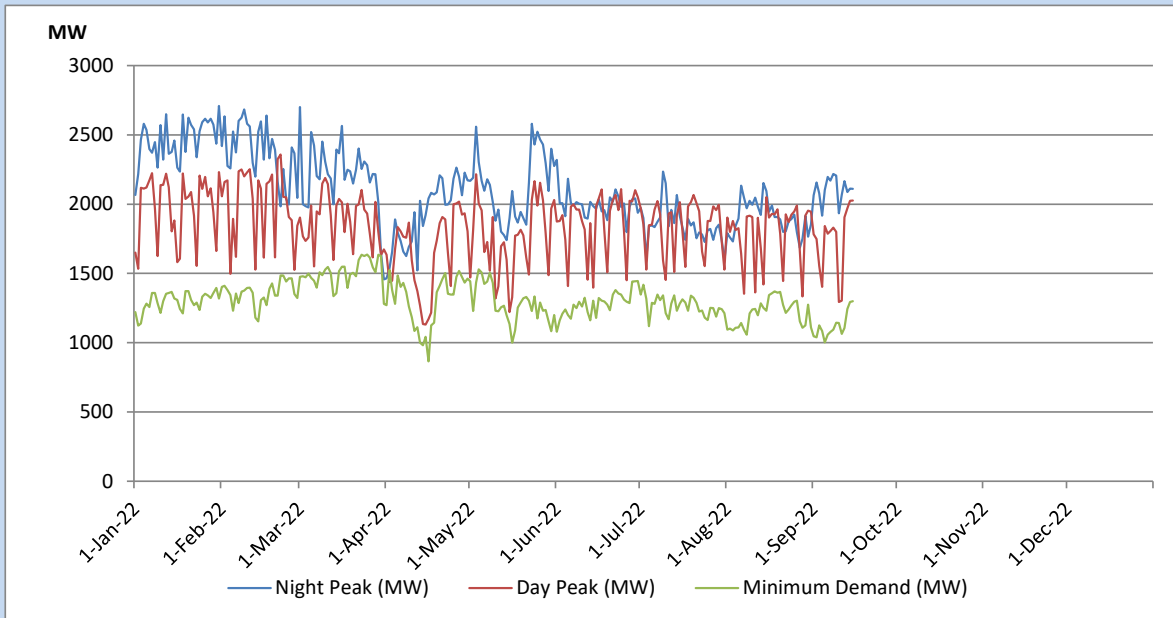
Comparison of Total Reservoir Storage Levels with Past Years



Variation of Major Hydro Reservoir Levels in the current year (GWh)



Variation of Demand during the current year

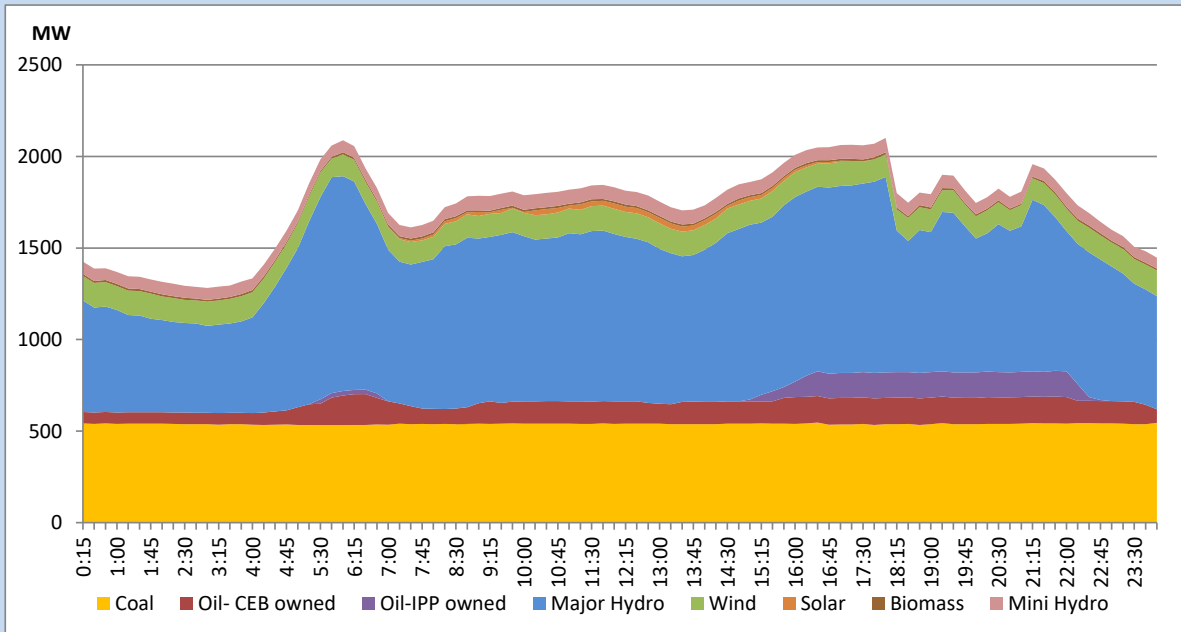


The above figures are excluding contribution from Roof Top Solar, 1MW solar, certain Wind plants and Mini Hydro plants

Daily Load Curve of the Previous day

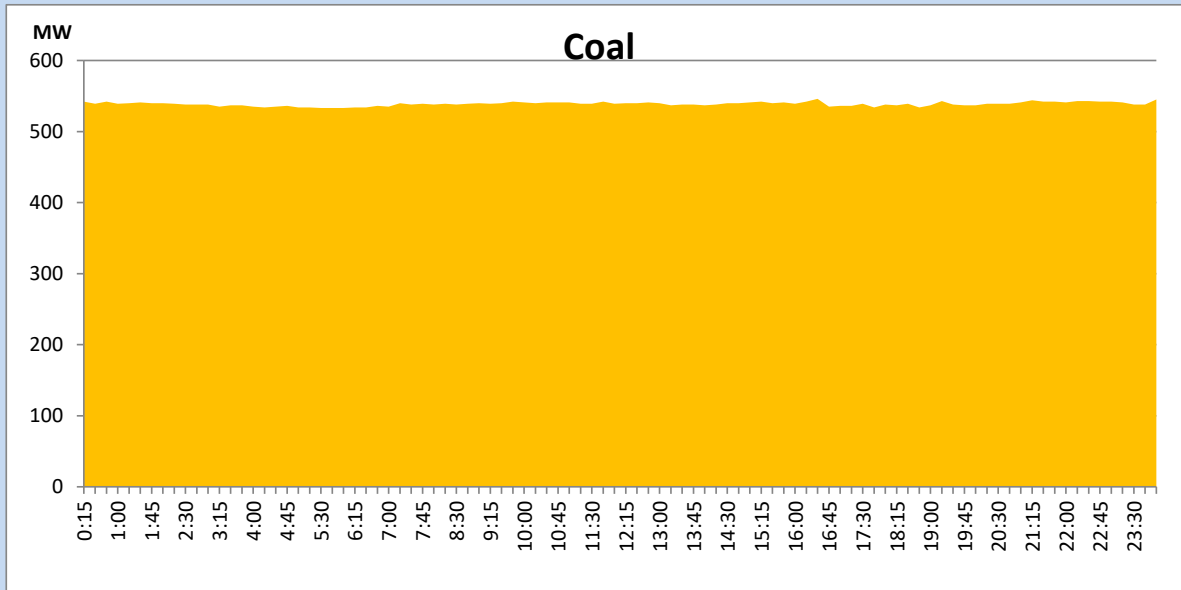
September 14, 2022

Solar and wind data is based on Telemetered Power Stations only



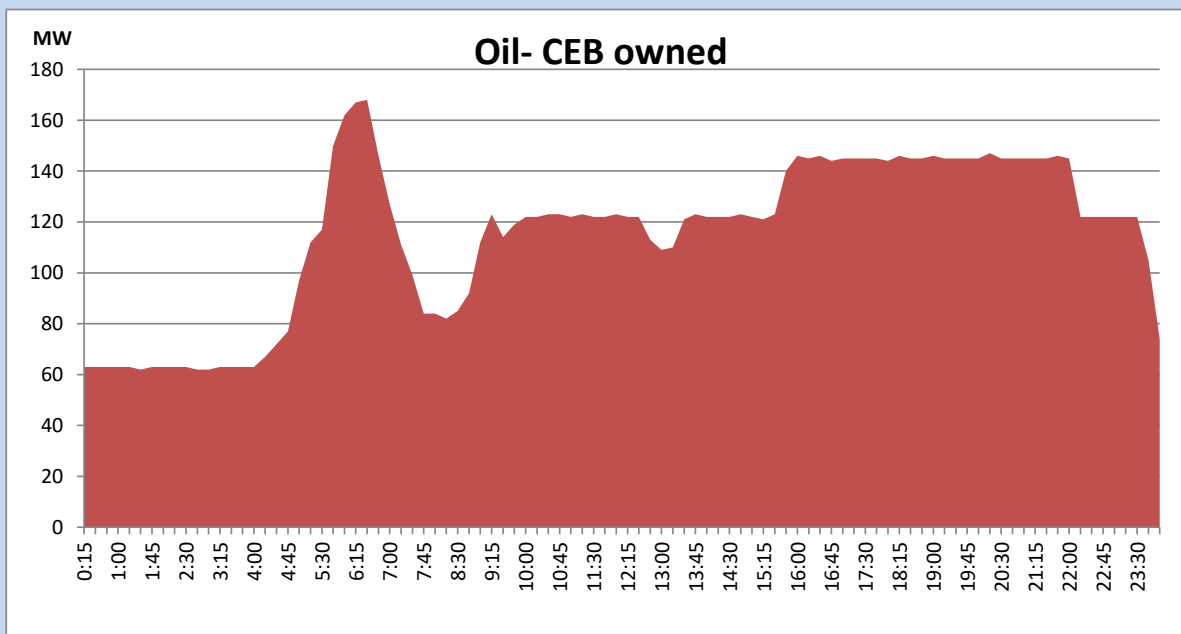
Coal Generation during the Previous day

September 14, 2022



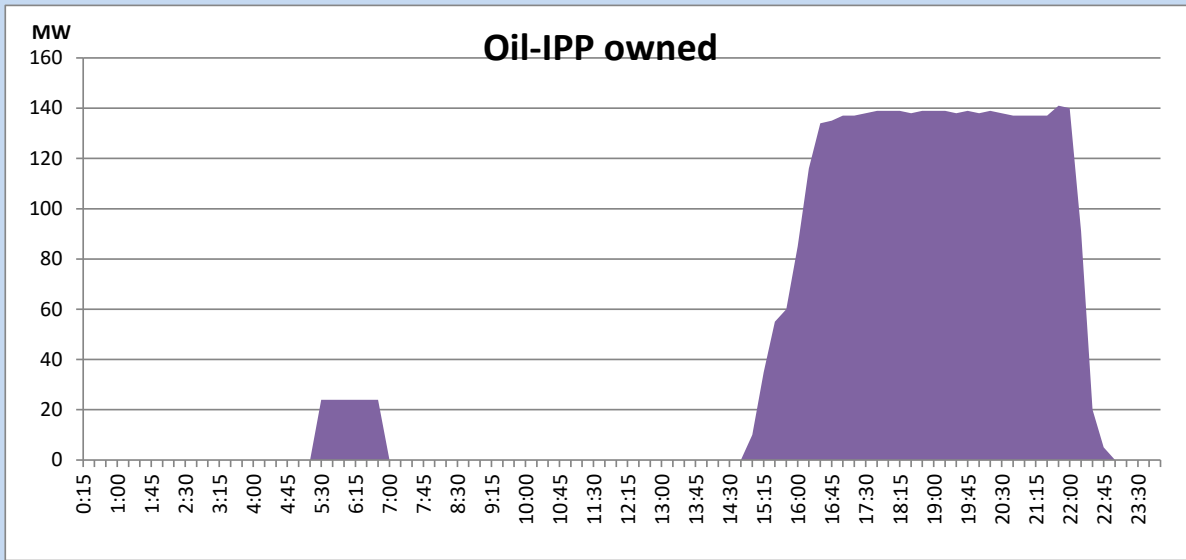
CEB Oil Plant Generation during the Previous day

September 14, 2022



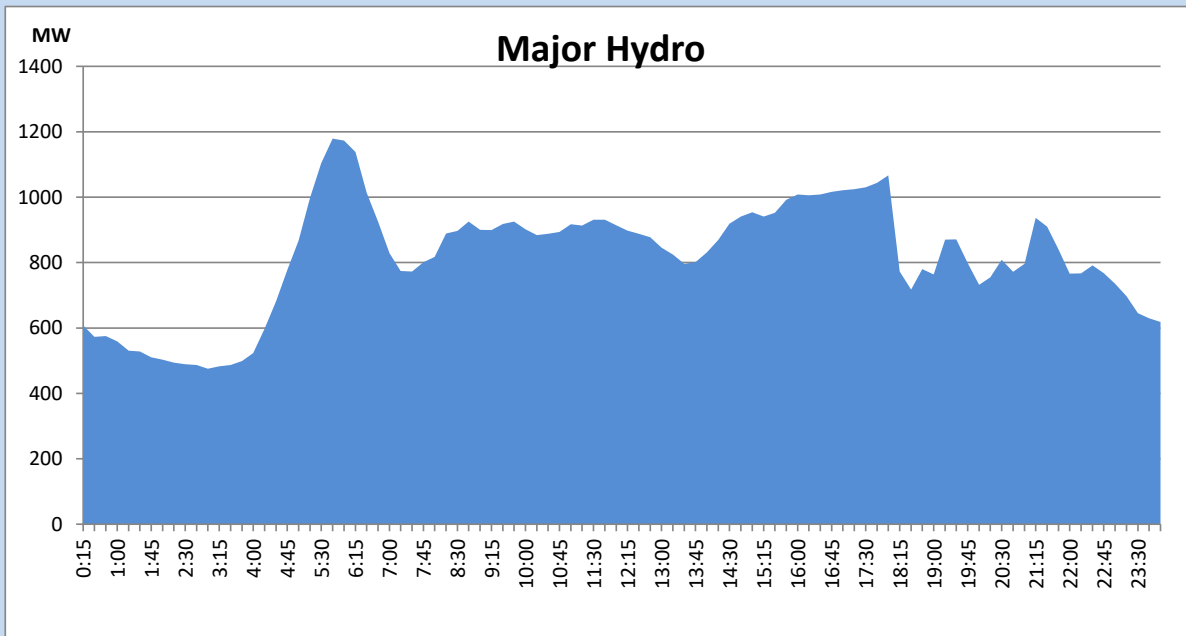
IPP Oil Plant Generation during the Previous day

September 14, 2022



Major Hydro Generation during the Previous day

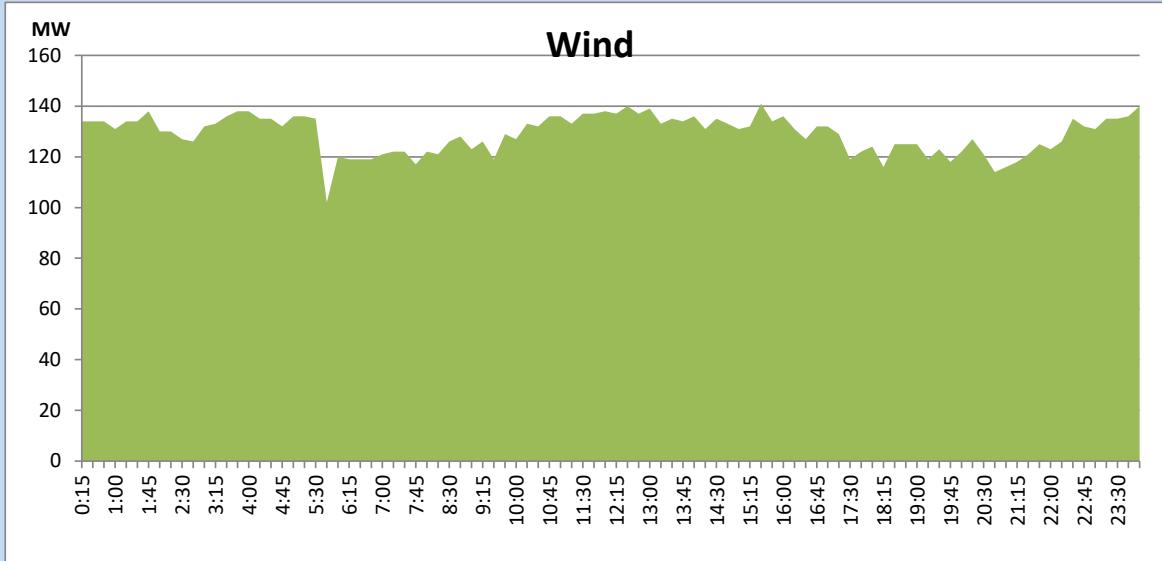
September 14, 2022



Wind Generation during the Previous day

September 14, 2022

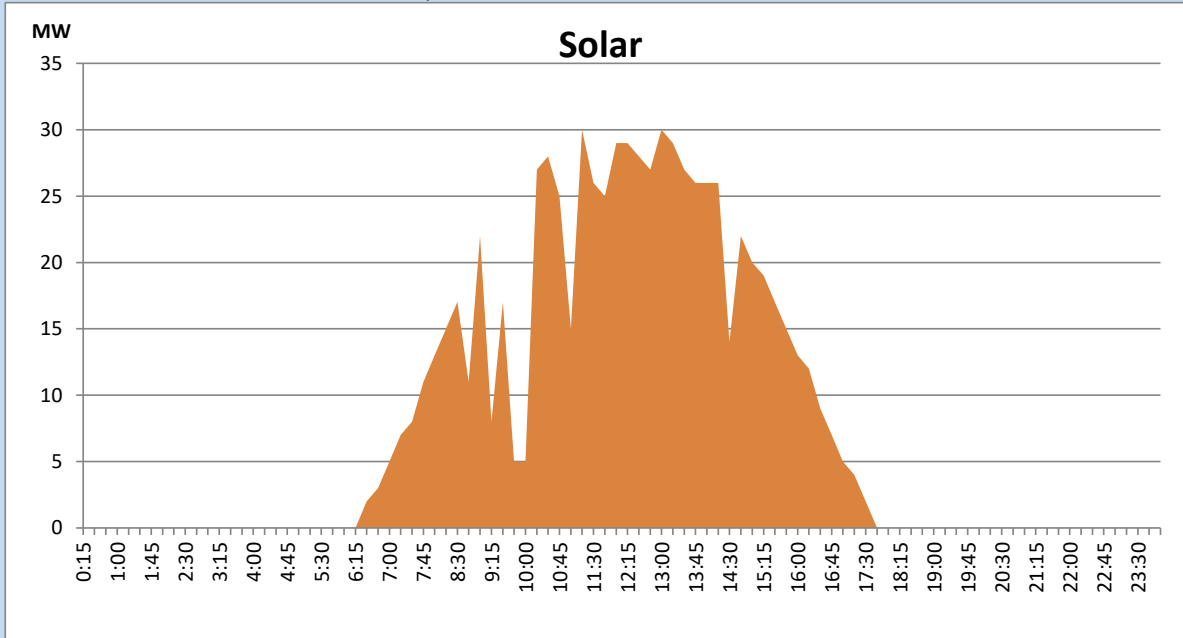
Based on Telemetered Power Stations only



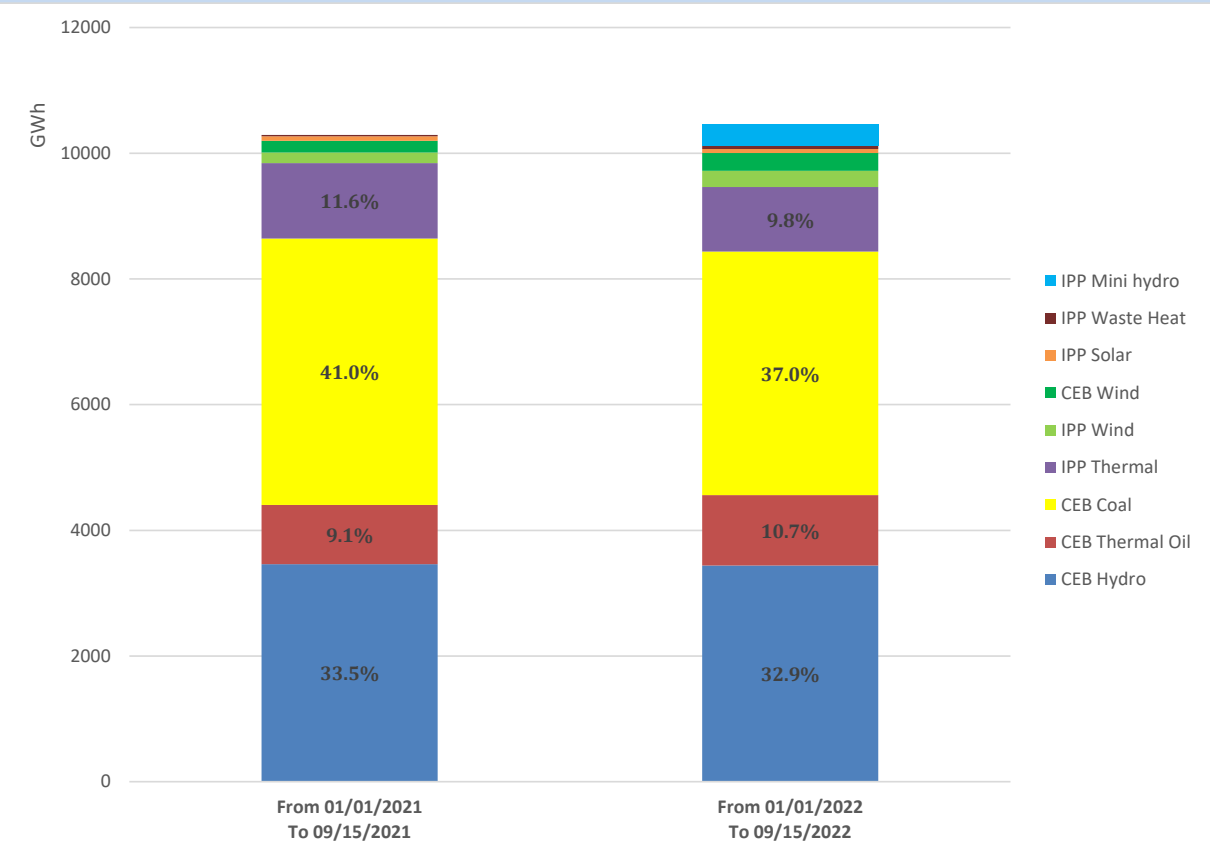
Solar Generation during the Previous day

September 14, 2022

Based on Telemetered Power Stations only



Cumulative Dispatch Comparison with Last Year



Thermal Plant Fuel types

Power Station	Primary Fuel
CEB Thermal	
Sapugaskanda 1	Heavy Fuel
Sapugaskanda 2	Heavy Fuel
Kelanitissa Small Gas Turbines	Auto Diesel
GT 7 - Kelanitissa	Auto Diesel
Kelanitissa CCY	Naphtha or Diesel
Lakvijaya 1	Coal
Lakvijaya 2	Coal
Lakvijaya 3	Coal
Uthuru Janani	Heavy Fuel
Barge CEB	Heavy Fuel

Power Station	Primary Fuel
Private Thermal	
Sojitz - Kelanitissa	Auto Diesel
West Coast	Auto Diesel / Heavy Fuel
ACE Matara	Heavy Fuel
ACE Embilipitiya	Heavy Fuel

Major Incidents during the day -as reported by CEB morning of

September 16, 2022

- 1) Rotational manual load shedding was carried out from 18:00hrs to 21:00hrs.
- 2) Trincomalee GSS 132/33kV T/F 02 tripped at 16:48hrs due to the operation of differential protection. T/F 02 is yet to be restored.