

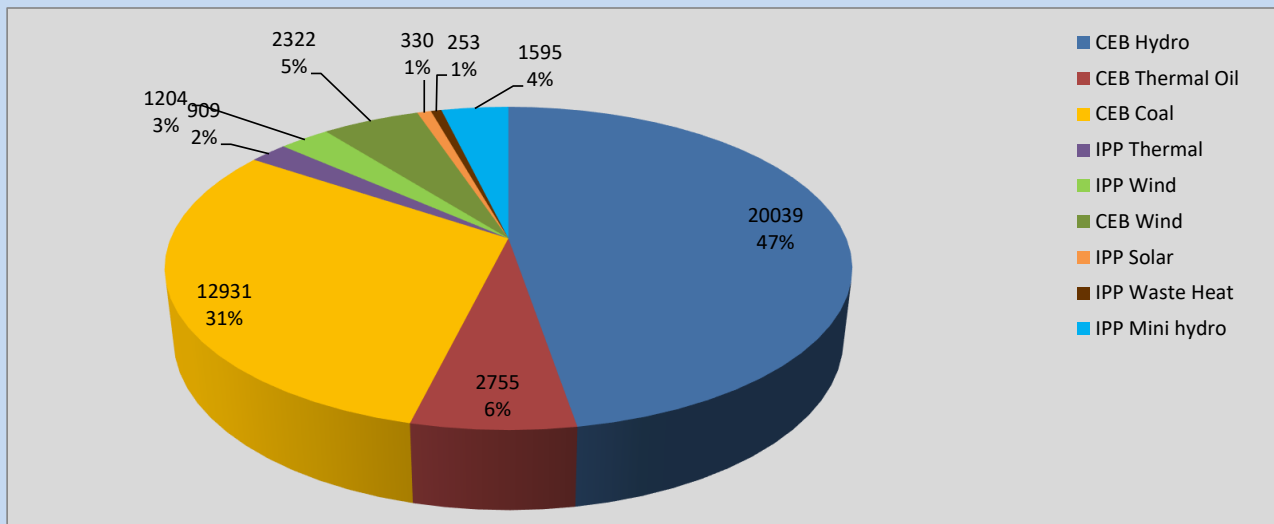
# Generation and Reservoirs Statistics

September 14, 2022



PUBLIC UTILITIES COMMISSION OF SRI LANKA

## Daily Generation Mix in MWh



**Total Generation** **42,338 MWh**

Note: Above data is excluding contribution from Roof Top Solar, 1MW Solar and certain Mini Hydro plants

## Cumulative Dispatch

Note: Following data is Excluding contribution from Roof Top Solar, 1MW solar and Mini Hydro plants

### For Current Month

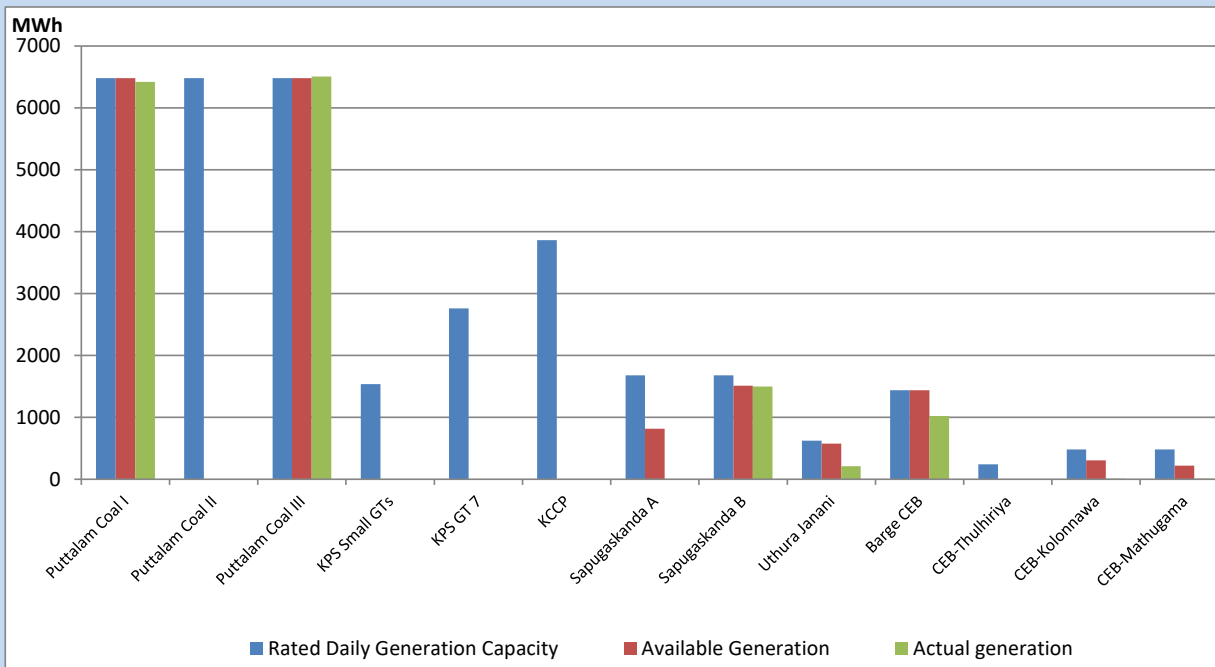
Category	Dispatch (GWh)	Percentage
CEB Hydro	284.06	53.15%
CEB Thermal Oil	5.69	1.06%
CEB Coal	148.44	27.77%
IPP Thermal	2.44	0.46%
SPP Wind	25.59	4.79%
CEB Wind	31.60	5.91%
SPP Solar	4.03	0.75%
SPP Solid Waste	3.25	0.61%
Mini Hydro	29.36	5.49%
<b>Total</b>	<b>534.46</b>	

### For Current Year

Category	Dispatch (GWh)	Percentage
CEB Hydro	3,417.8	32.80%
CEB Thermal Oil	1,118.0	10.73%
CEB Coal	3,861.5	37.06%
IPP Thermal	1,029.4	9.88%
SPP Wind	256.4	2.46%
CEB Wind	277.7	2.67%
SPP Solar	66.3	0.64%
SPP Solid Waste	52.4	0.50%
Mini Hydro	339.4	3.26%
<b>Total</b>	<b>10,418.6</b>	

## CEB owned Thermal Plant Dispatch

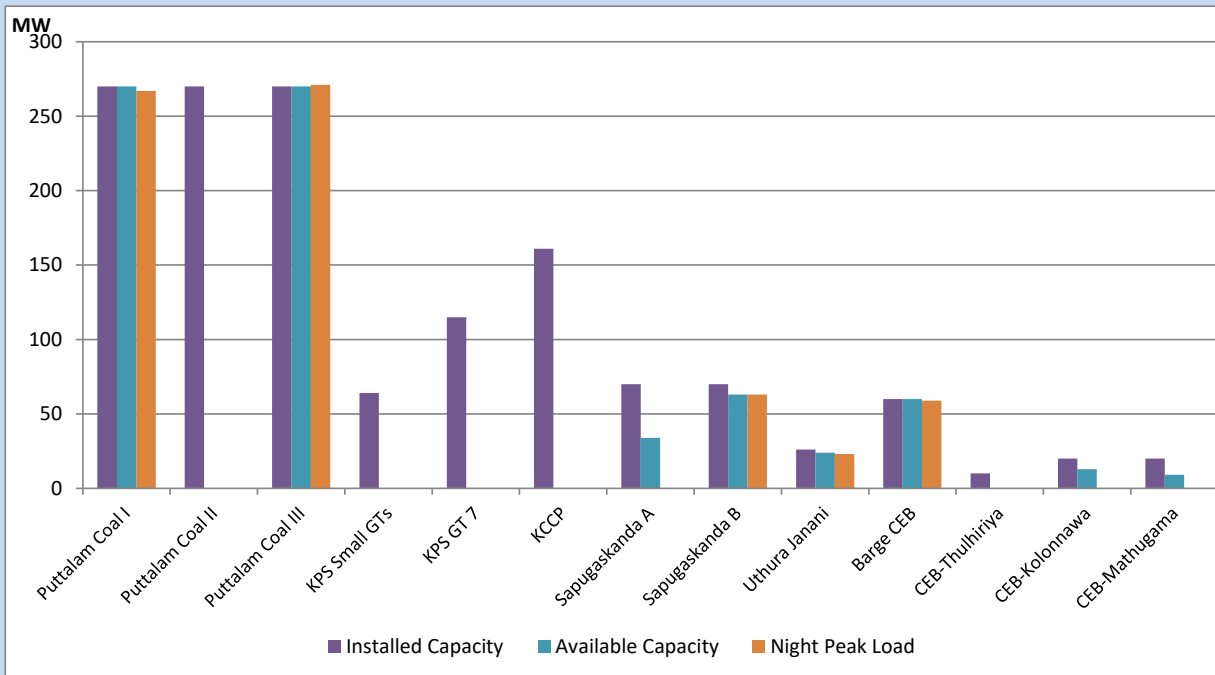
September 14, 2022



Available Generation is estimated based on plant availability at 6.00am on

September 15, 2022

## CEB owned Thermal Plant Loading at the Night Peak



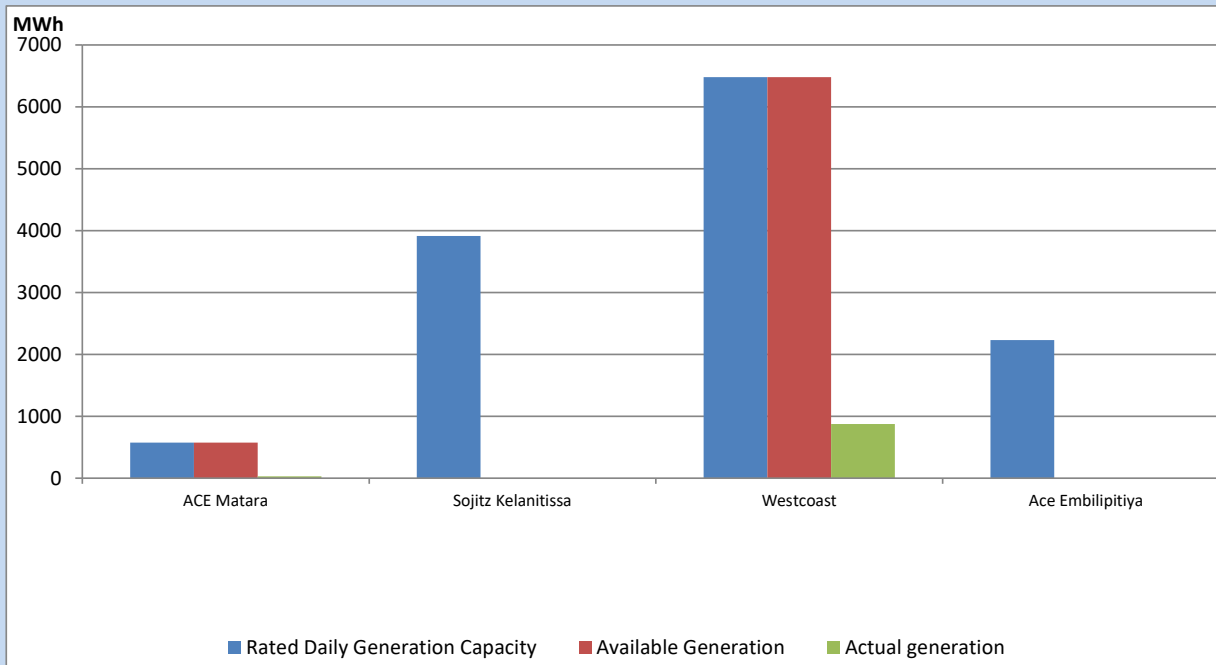
Note- Plant availability is recorded at 6.00 am on

September 15, 2022

## IPP owned Thermal Plant Dispatch

September 14, 2022

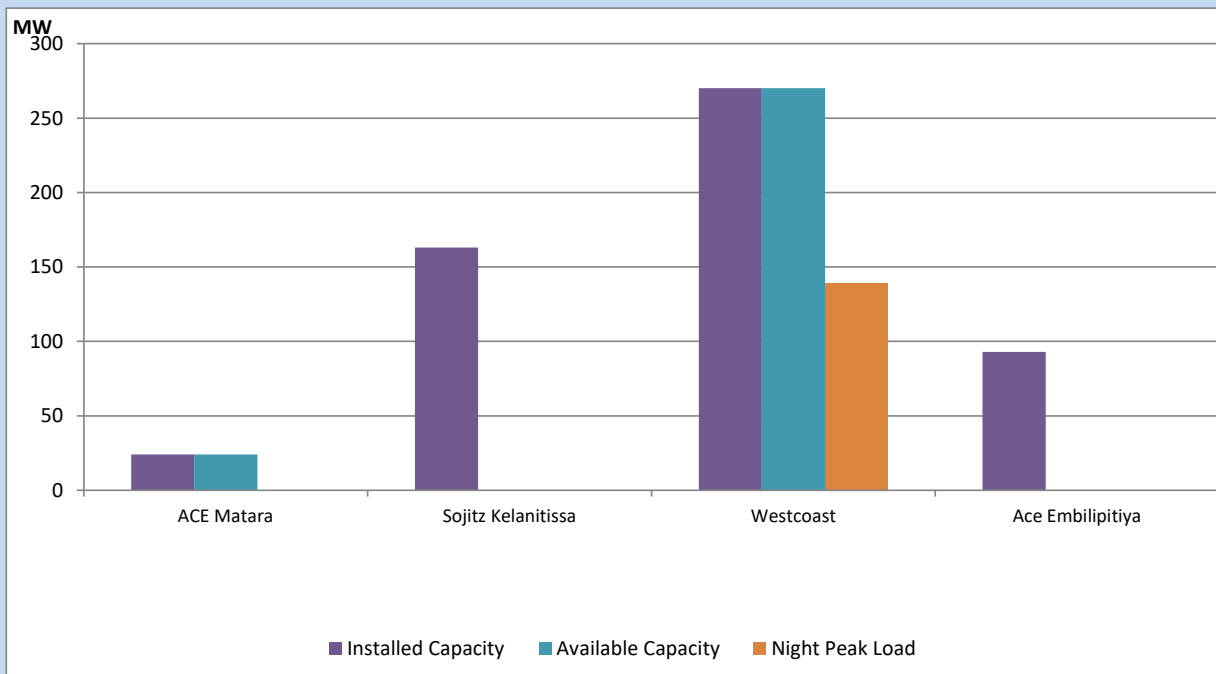
Asia Power, V Power Pallekale, Vpower Galle, V Power Horana, Vpower Hambantota, Vpower Valachchena and Altaqa Mahiyanganaya are not available due to expiration of PPAs



Available Generation is estimated based on plant availability at 6.00am on

September 15, 2022

## IPP owned Thermal Plant Loading at the Night Peak

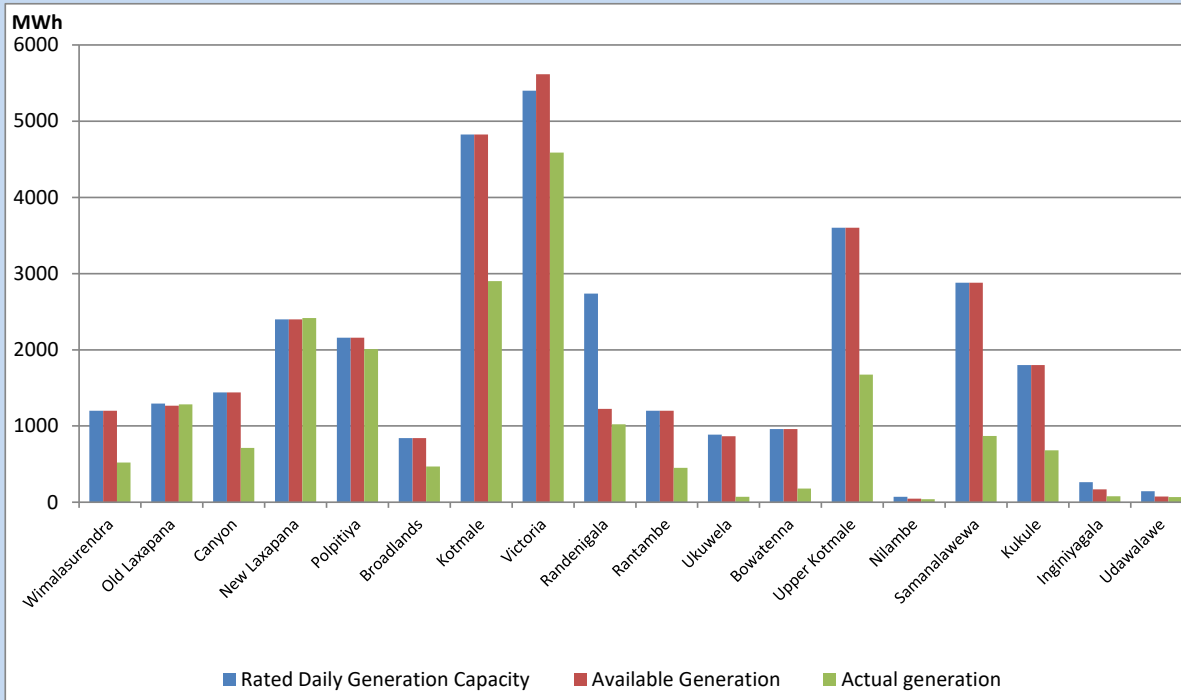


Note- Plant availability is recorded at 6.00 am on

September 15, 2022

## Major Hydro Plant Dispatch

September 14, 2022

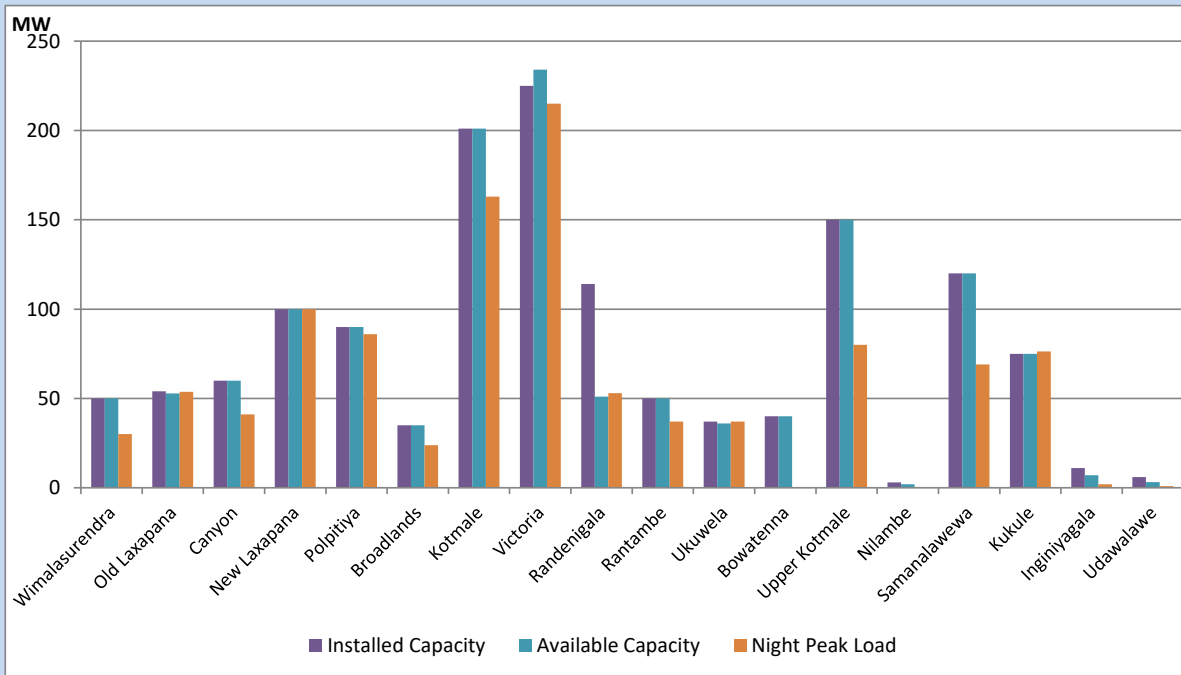


Available Generation is estimated based on plant availability at 6.00am on  
Broadlands power plant is operating in the Commissioning Stage

September 15, 2022

## Major Hydro Plant Loading at Night Peak

September 14, 2022



Note- Plant availability is recorded at 6.00 am on  
Broadlands power plant is operating in the Commissioning Stage

September 15, 2022

## Summary of Major Plant performance

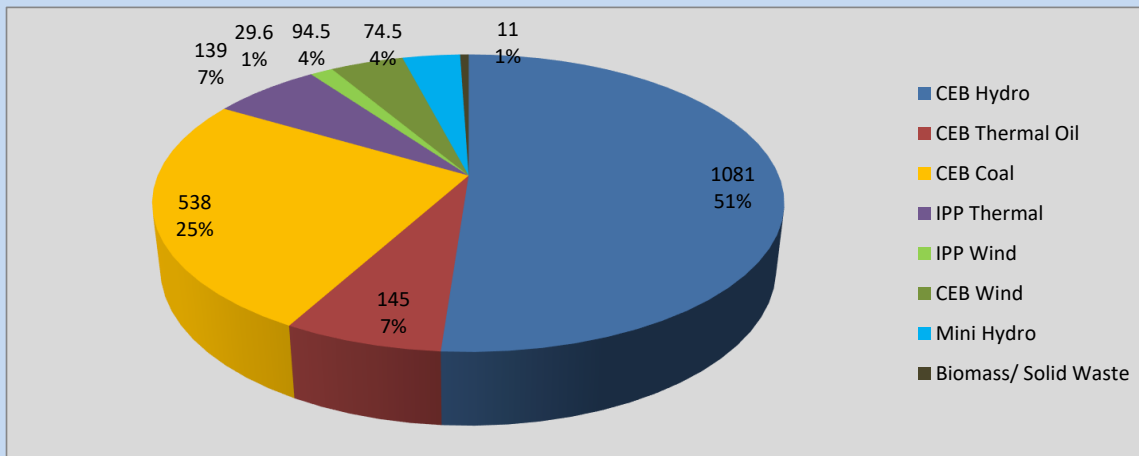
Plant	Installed Capacity	Plant Availability	Night peak Load	Plant Dispatch
	(MW)	(MW)	(MW)	(MWh)
Wimalasurendra	50	50	30	522
Old Laxapana	54	53	54	1,284
Canyon	60	60	41	711
New Laxapana	100	100	100	2,418
Polpitiya	90	90	86	2,009
Broadlands	35	35	24	470
Kotmale	201	201	163	2,900
Victoria	225	234	215	4,589
Randenigala	114	51	53	1,024
Rantambe	50	50	37	452
Ukuwela	37	36	37	72
Bowatenna	40	40	0	179
Upper Kotmale	150	150	80	1,676
Nilambe	3	2	0	40
Samanalawewa	120	120	69	868
Kukule	75	75	76	680
Inginiyagala	11	7	2	79
Udawalawe	6	3	1	66
Puttalam Coal I	270	270	267	6,423
Puttalam Coal II	270	0	0	0
Puttalam Coal III	270	270	271	6,508
KPS Small GTs	64	0	0	0
KPS GT 7	115	0	0	0
KCCP	161	0	0	0
Sapugaskanda A	70	34	0	0
Sapugaskanda B	70	63	63	1,501
Uthura Janani	26	24	23	212
Barge CEB	60	60	59	1,023
CEB-Thulhiriya	10	0	0	0
CEB-Kolonnawa	20	13	0	11
CEB-Mathugama	20	9	0	8
ACE Matara	24	24	0	32
Sojitz Kelanitissa	163	0	0	0
West Coast	270	270	139	877
ACE Embilipitiya	93	0	0	0
<b>Total</b>	<b>3,397</b>	<b>2,394</b>	<b>2,099</b>	<b>42,338</b>

Plant availability is the availability recorded at 6 am on

September 15, 2022

## Contribution to the Night Peak in MW

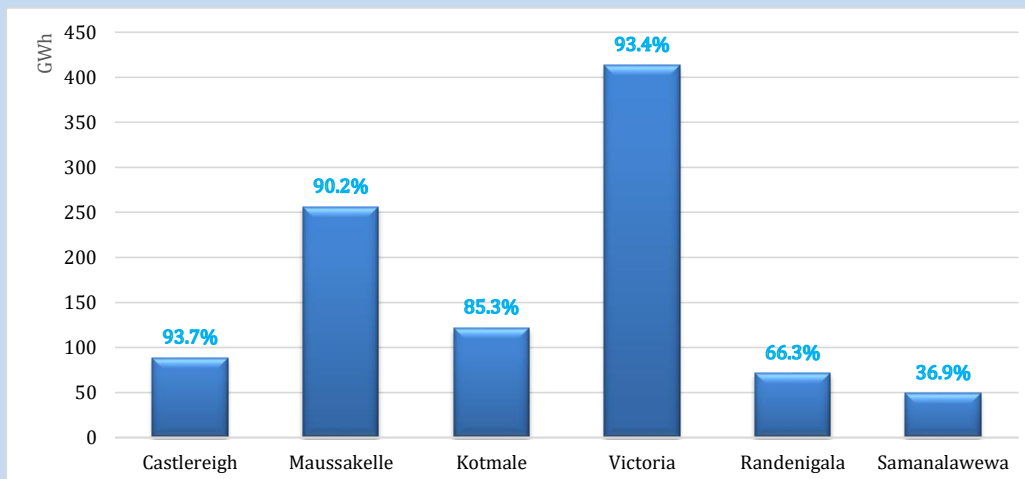
September 14, 2022



Night Peak*	2,112.4 MW
Day Peak	2,024.6 MW
Minimum Demand	1,293.9 MW

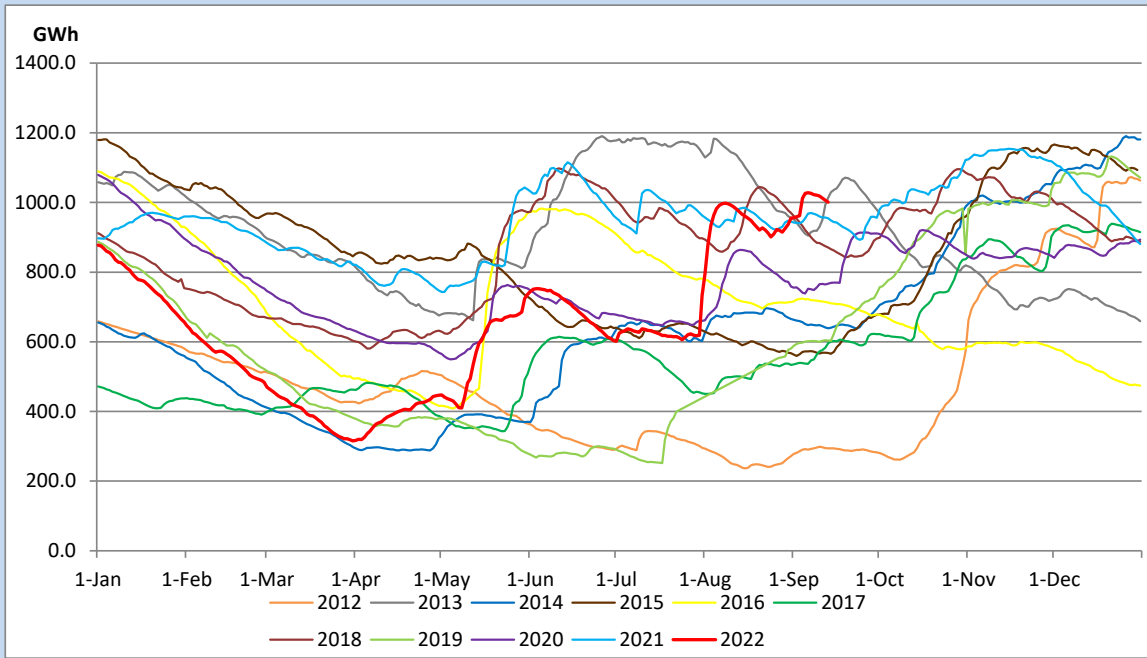
Above figures are excluding contribution from Roof Top Solar, 1MW solar, certain Wind plants and Mini Hydro plants

## Reservoir Levels - as at 06.00 Hr on September 15, 2022

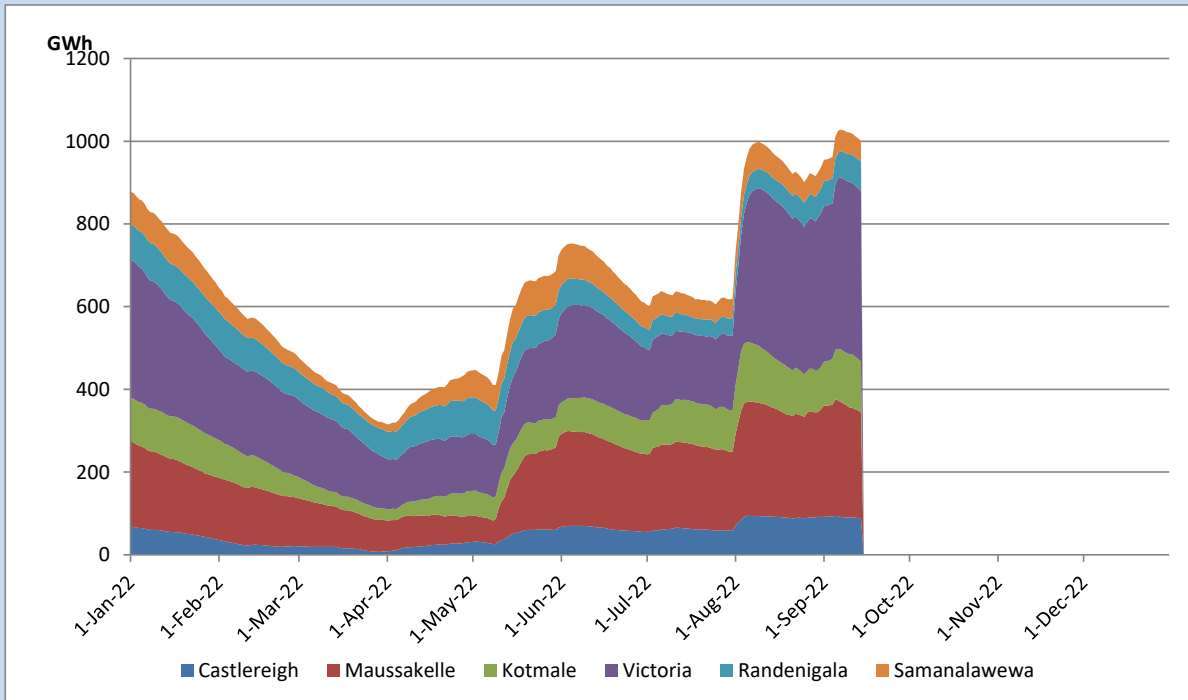


Total Reservoir Level	1000.9 GWh
% of Total capacity	83.1%

## Comparison of Total Reservoir Storage Levels with Past Years

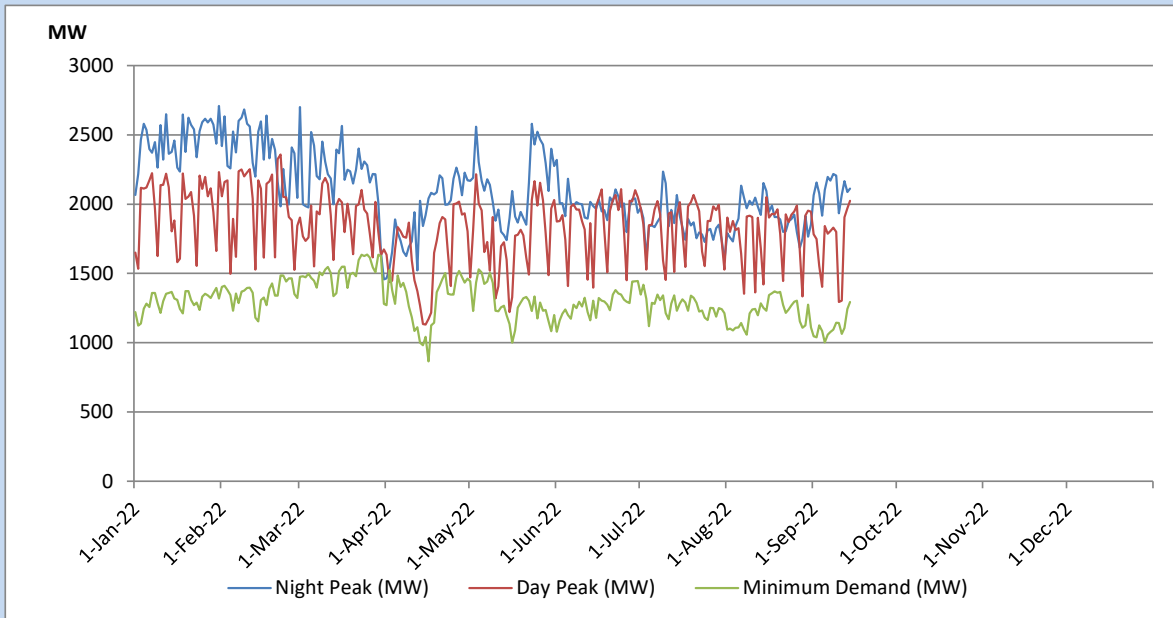


## Variation of Major Hydro Reservoir Levels in the current year (GWh)





## Variation of Demand during the current year

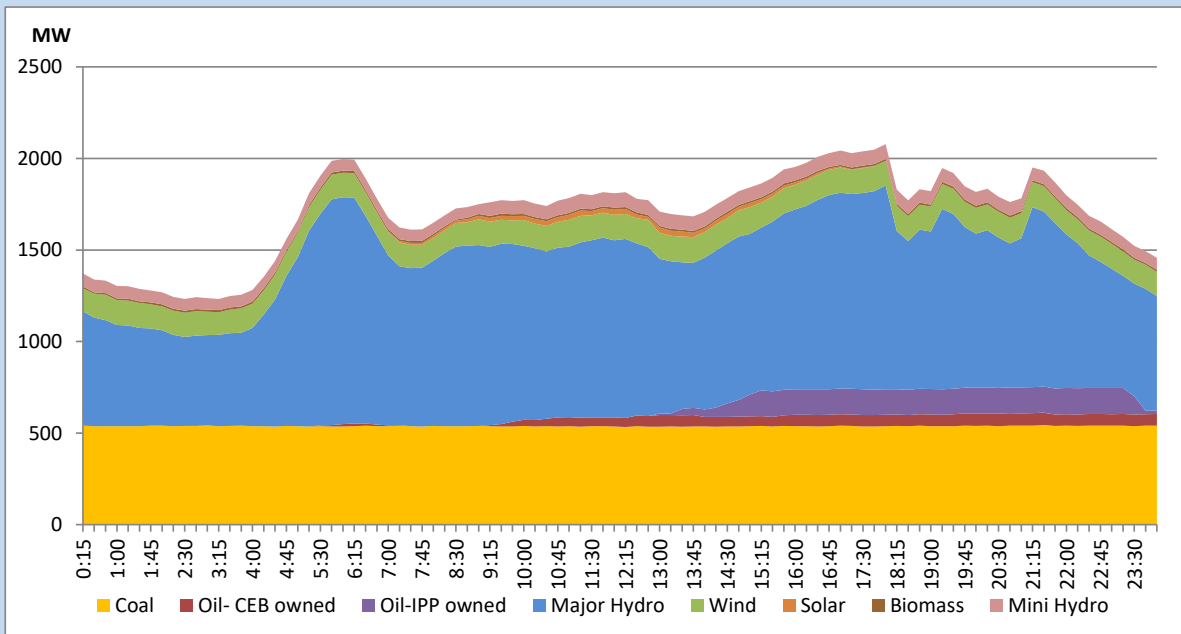


The above figures are excluding contribution from Roof Top Solar, 1MW solar, certain Wind plants and Mini Hydro plants

## Daily Load Curve of the Previous day

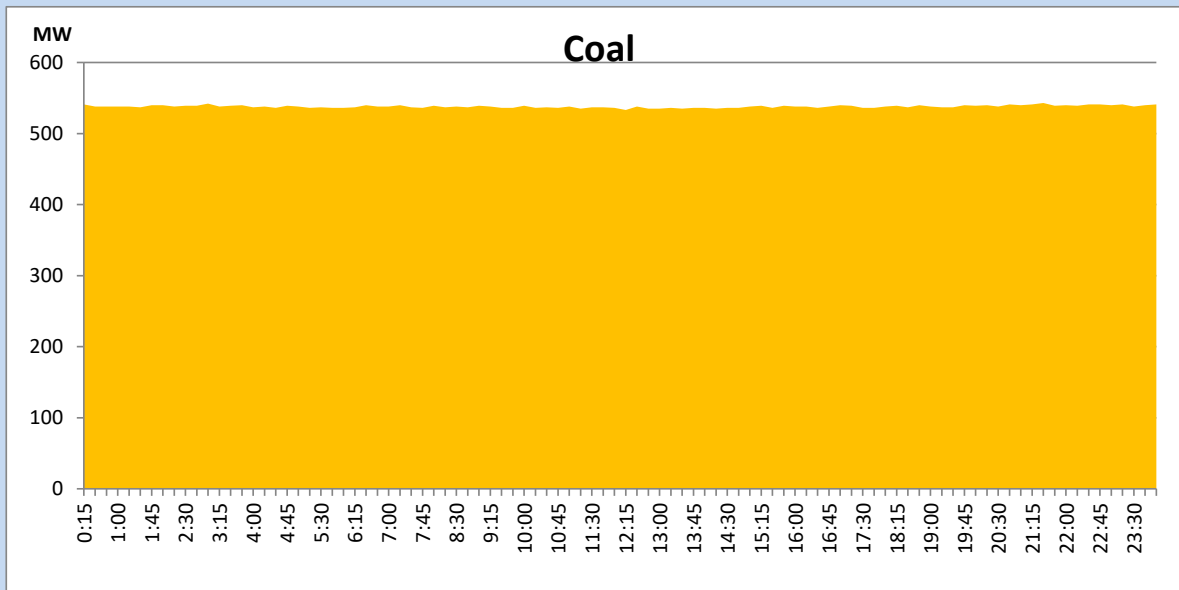
September 13, 2022

Solar and wind data is based on Telemetered Power Stations only



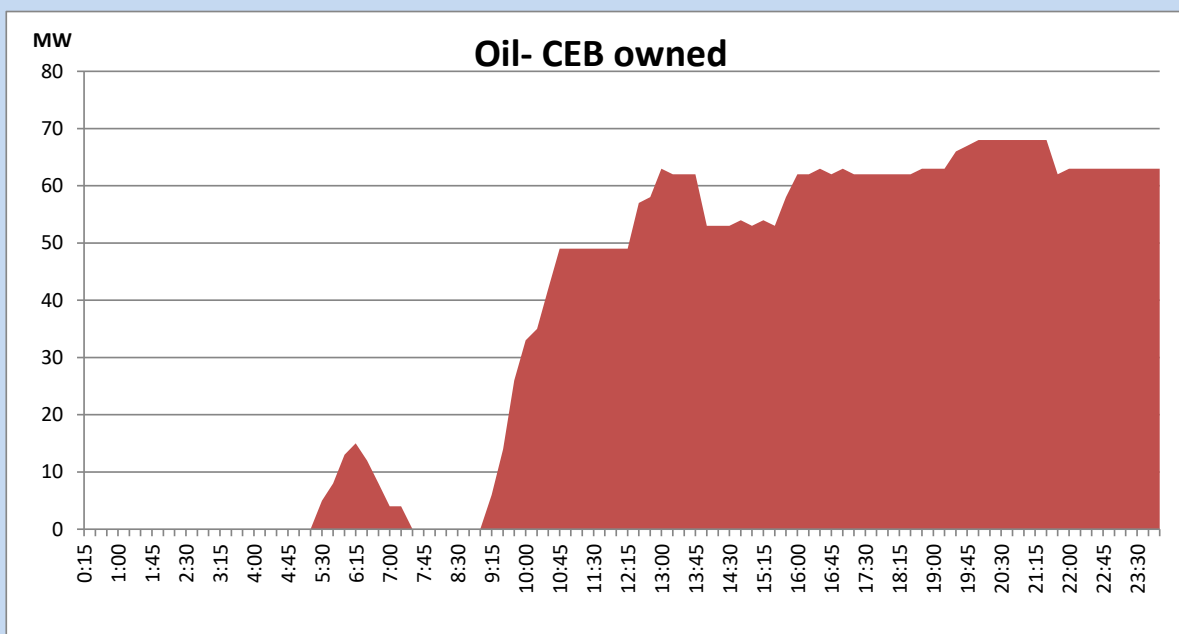
## Coal Generation during the Previous day

September 13, 2022



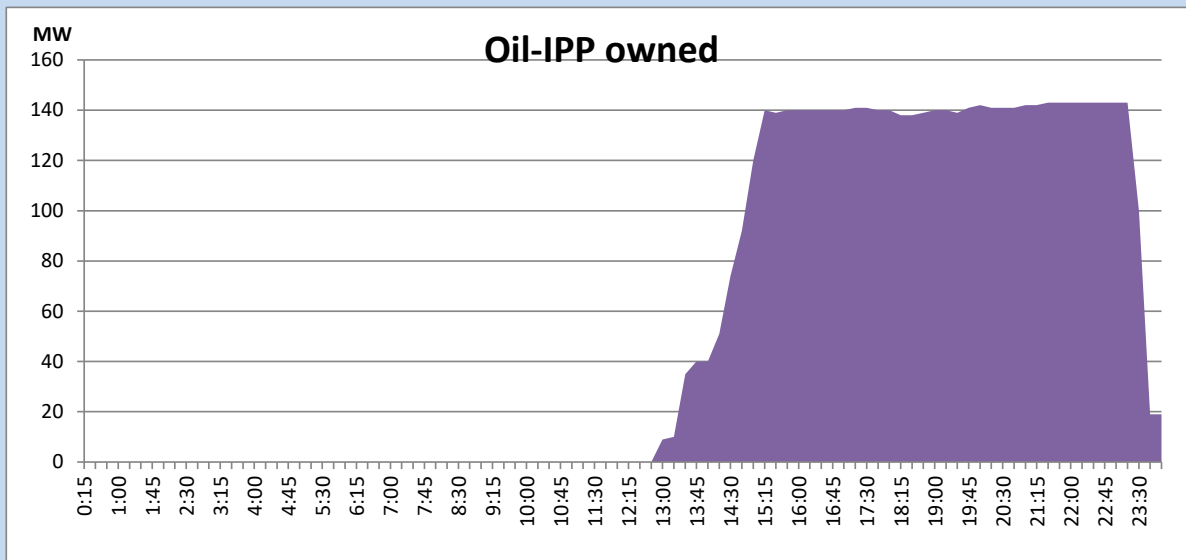
## CEB Oil Plant Generation during the Previous day

September 13, 2022



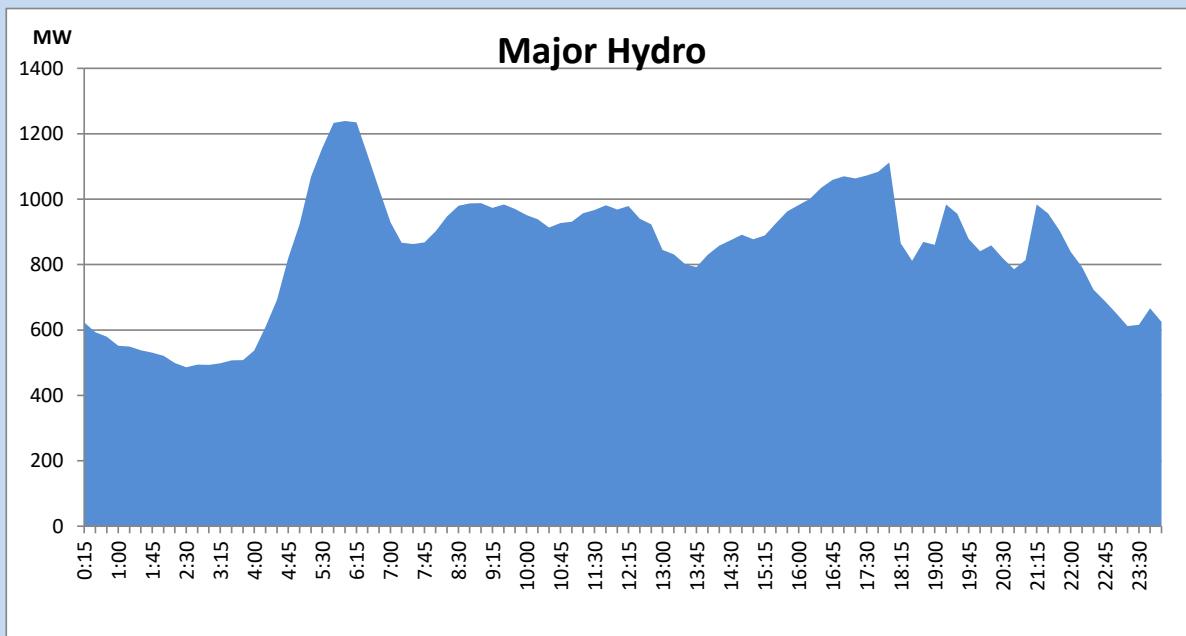
## IPP Oil Plant Generation during the Previous day

September 13, 2022



## Major Hydro Generation during the Previous day

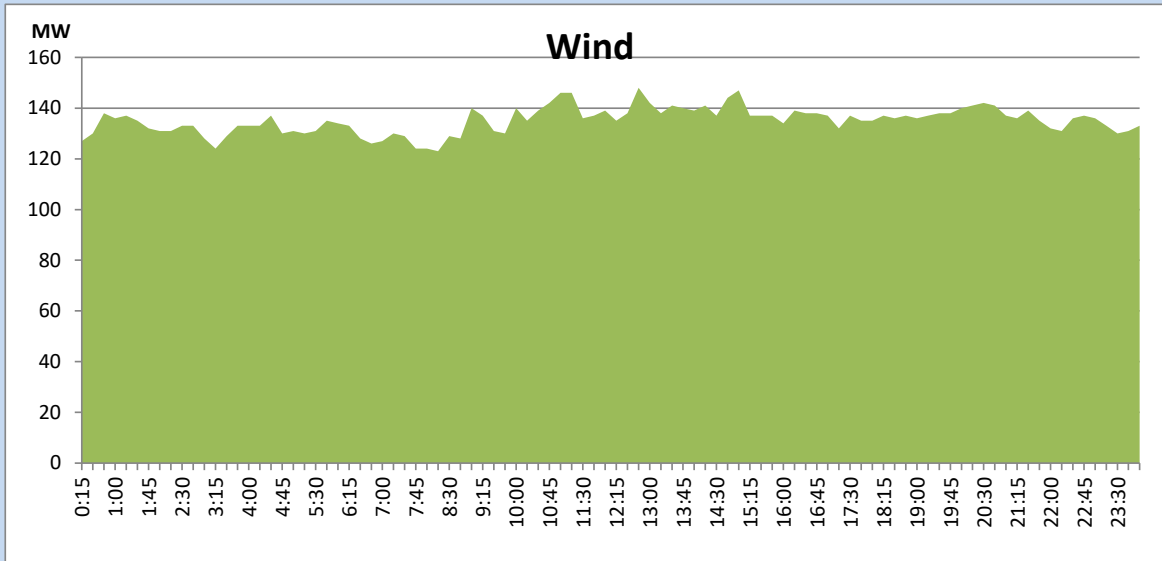
September 13, 2022



## Wind Generation during the Previous day

September 13, 2022

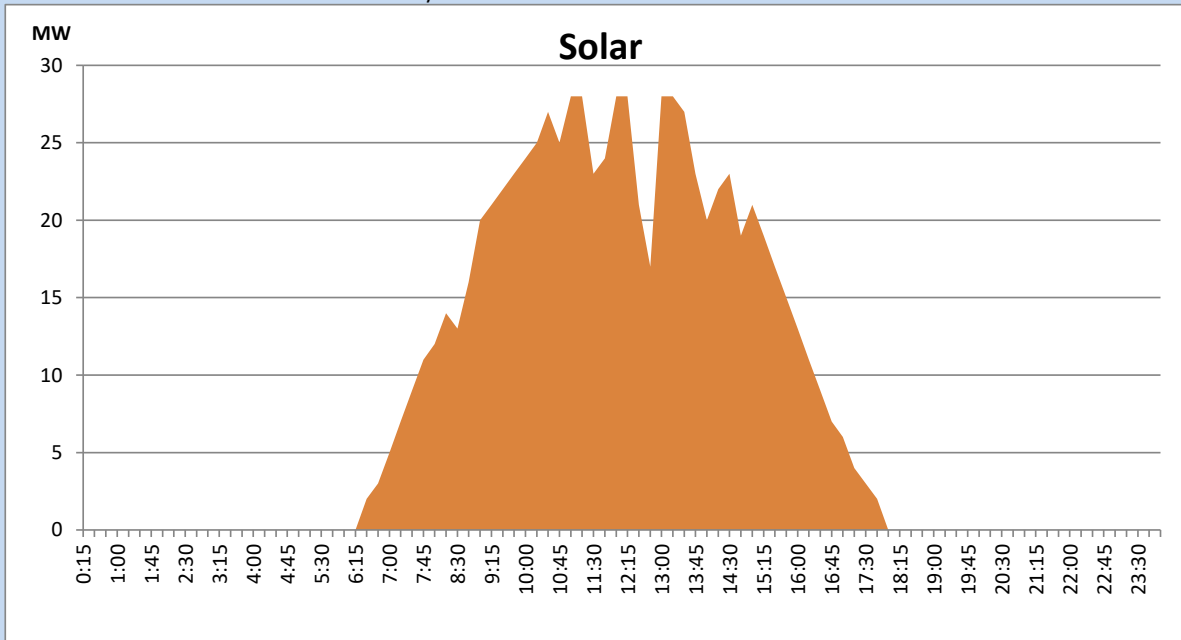
Based on Telemetered Power Stations only



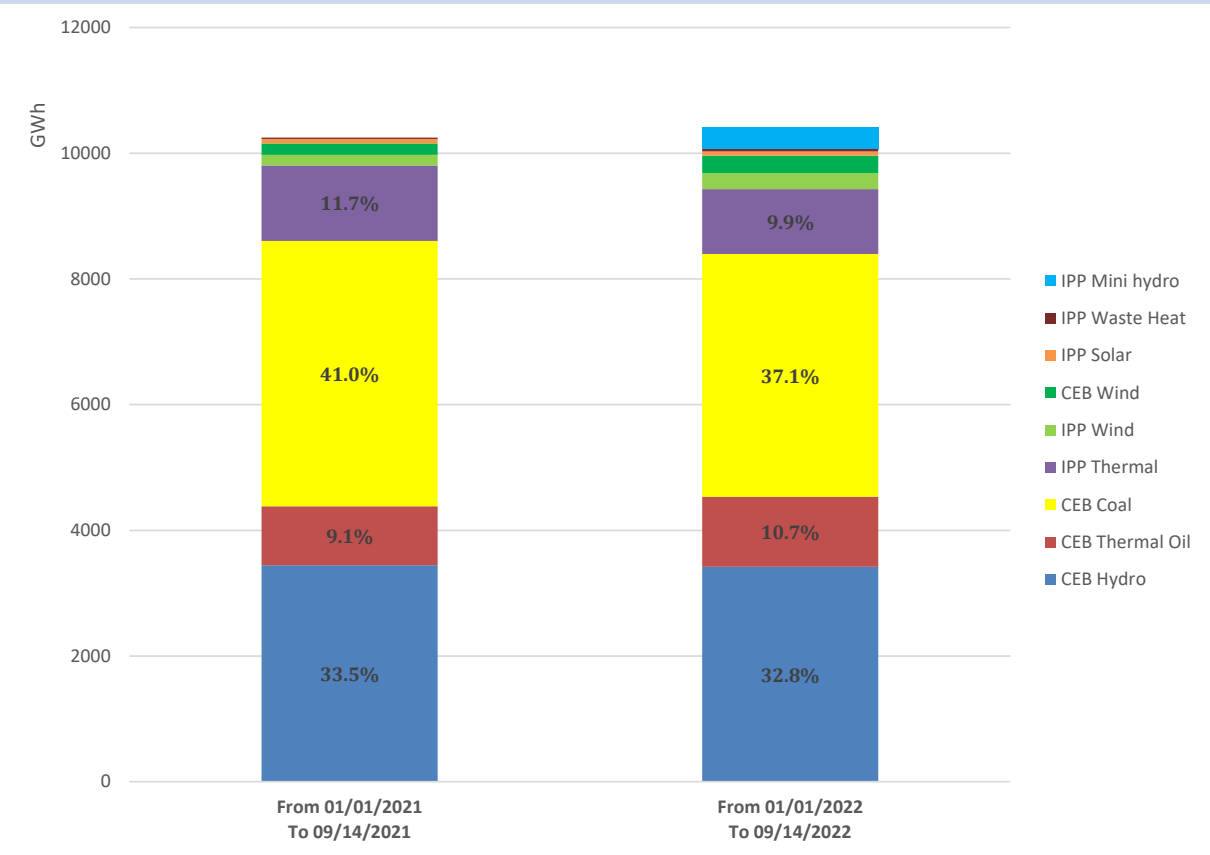
## Solar Generation during the Previous day

September 13, 2022

Based on Telemetered Power Stations only



# Cumulative Dispatch Comparison with Last Year



## Thermal Plant Fuel types

Power Station	Primary Fuel
CEB Thermal	
Sapugaskanda 1	Heavy Fuel
Sapugaskanda 2	Heavy Fuel
Kelanitissa Small Gas Turbines	Auto Diesel
GT 7 - Kelanitissa	Auto Diesel
Kelanitissa CCY	Naphtha or Diesel
Lakvijaya 1	Coal
Lakvijaya 2	Coal
Lakvijaya 3	Coal
Uthuru Janani	Heavy Fuel
Barge CEB	Heavy Fuel

Power Station	Primary Fuel
Private Thermal	
Sojitz - Kelanitissa	Auto Diesel
West Coast	Auto Diesel / Heavy Fuel
ACE Matara	Heavy Fuel
ACE Embilipitiya	Heavy Fuel

## Major Incidents during the day -as reported by CEB morning of

September 15, 2022

- 1) Rotational manual load shedding was carried out from 18:00hrs to 21:00hrs.
- 2) Kotmale unit 02 which was made unavailable due to stator cooler leakage,resumed generation at 08:04hrs.