

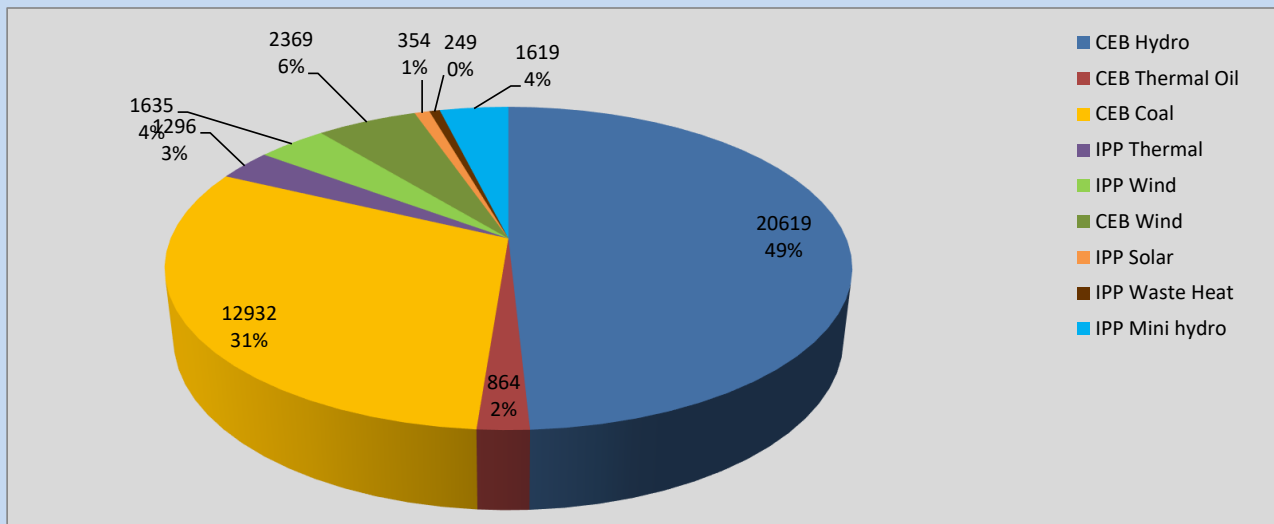
Generation and Reservoirs Statistics

September 13, 2022



PUBLIC UTILITIES COMMISSION OF SRI LANKA

Daily Generation Mix in MWh



Total Generation **41,937 MWh**

Note: Above data is excluding contribution from Roof Top Solar, 1MW Solar and certain Mini Hydro plants

Cumulative Dispatch

Note: Following data is Excluding contribution from Roof Top Solar, 1MW solar and Mini Hydro plants

For Current Month

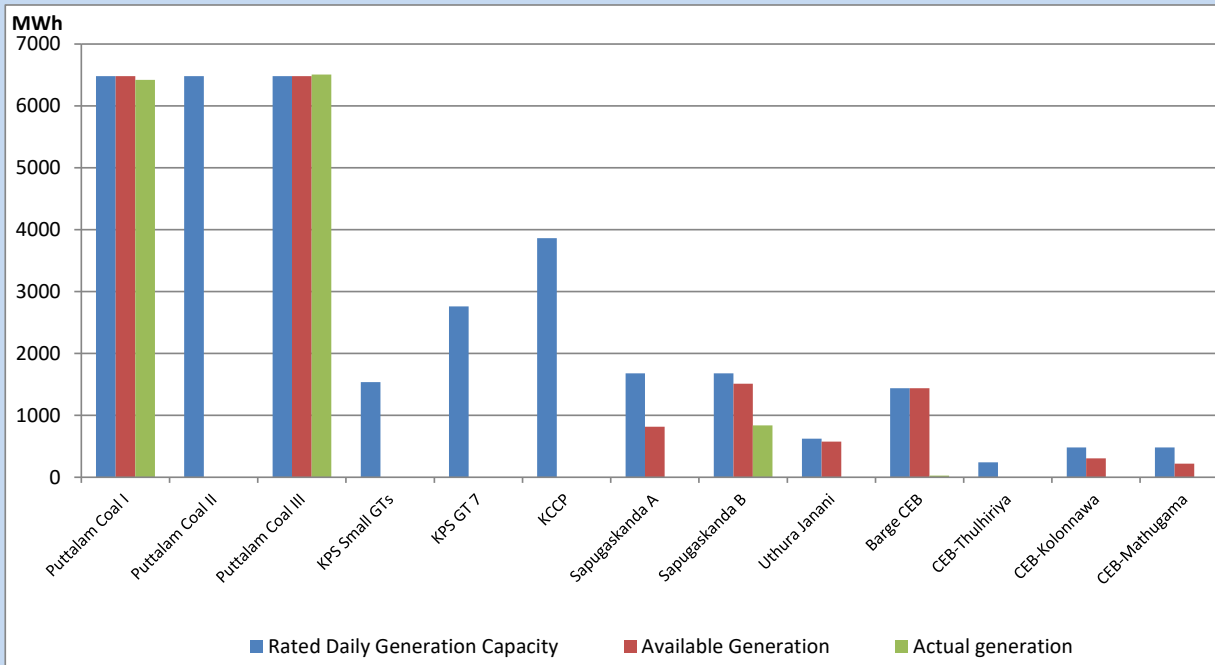
Category	Dispatch (GWh)	
CEB Hydro	264.03	53.65%
CEB Thermal Oil	2.94	0.60%
CEB Coal	135.51	27.53%
IPP Thermal	1.53	0.31%
SPP Wind	24.39	4.96%
CEB Wind	29.28	5.95%
SPP Solar	3.70	0.75%
SPP Solid Waste	3.00	0.61%
Mini Hydro	27.76	5.64%
Total	492.14	

For Current Year

Category	Dispatch (GWh)	
CEB Hydro	3,397.7	32.75%
CEB Thermal Oil	1,115.3	10.75%
CEB Coal	3,848.6	37.09%
IPP Thermal	1,028.5	9.91%
SPP Wind	255.2	2.46%
CEB Wind	275.4	2.65%
SPP Solar	66.0	0.64%
SPP Solid Waste	52.2	0.50%
Mini Hydro	337.8	3.26%
Total	10,376.3	

CEB owned Thermal Plant Dispatch

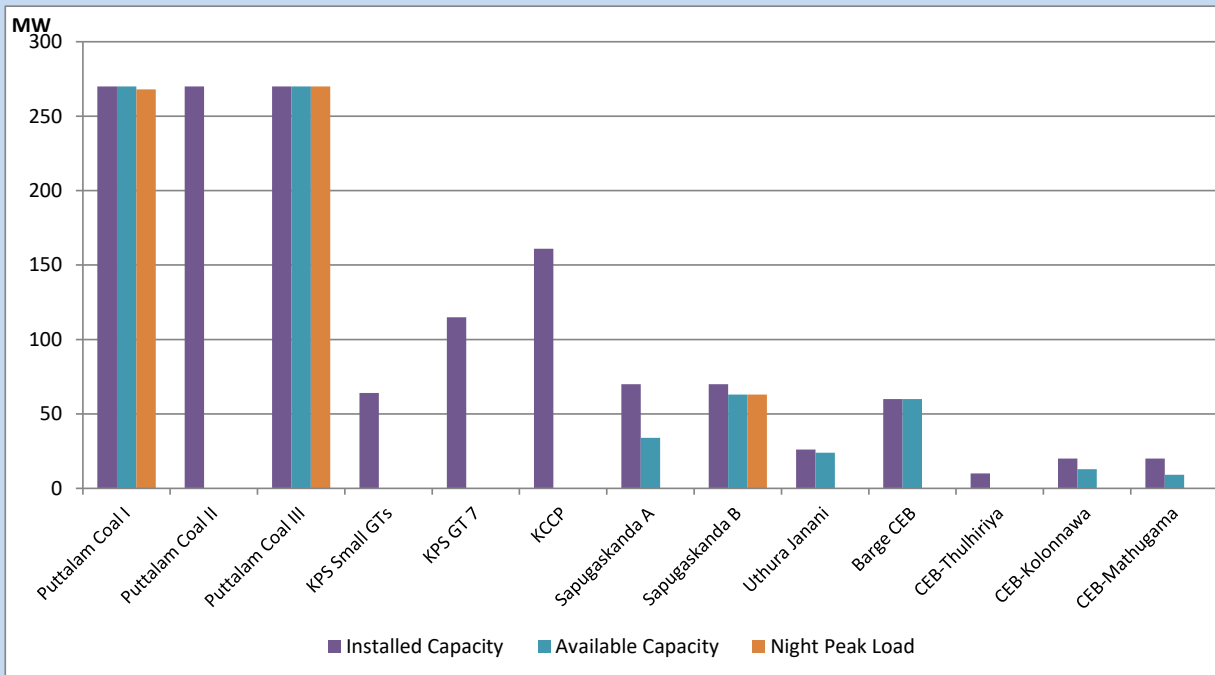
September 13, 2022



Available Generation is estimated based on plant availability at 6.00am on

September 14, 2022

CEB owned Thermal Plant Loading at the Night Peak



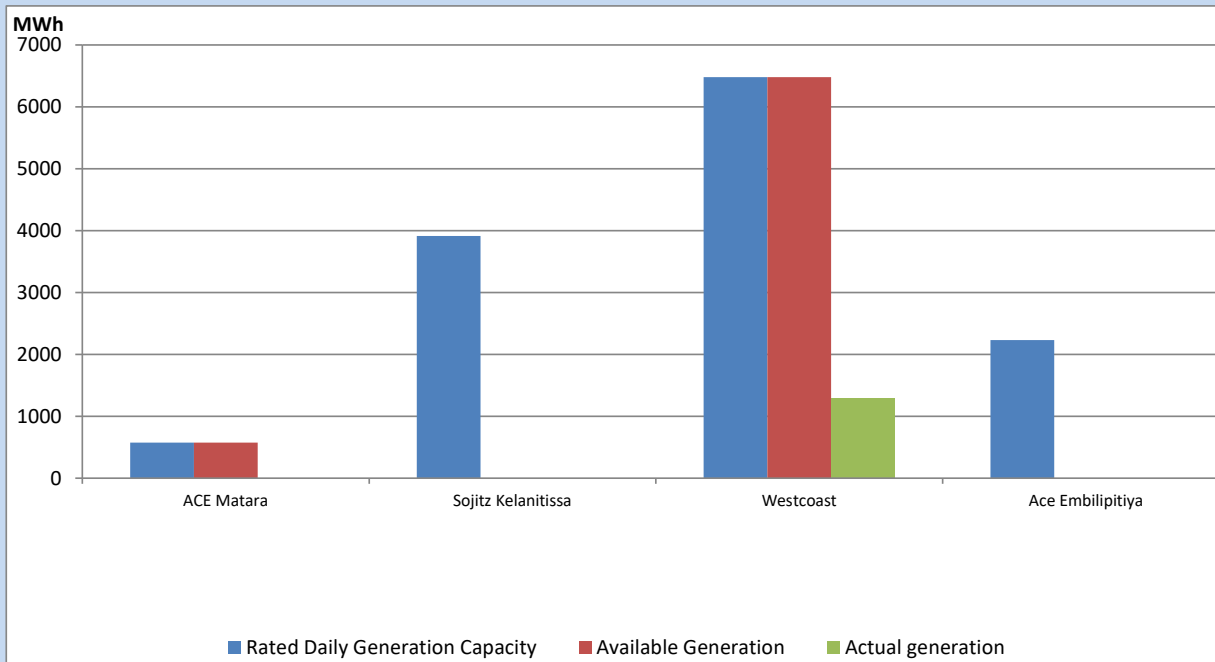
Note- Plant availability is recorded at 6.00 am on

September 14, 2022

IPP owned Thermal Plant Dispatch

September 13, 2022

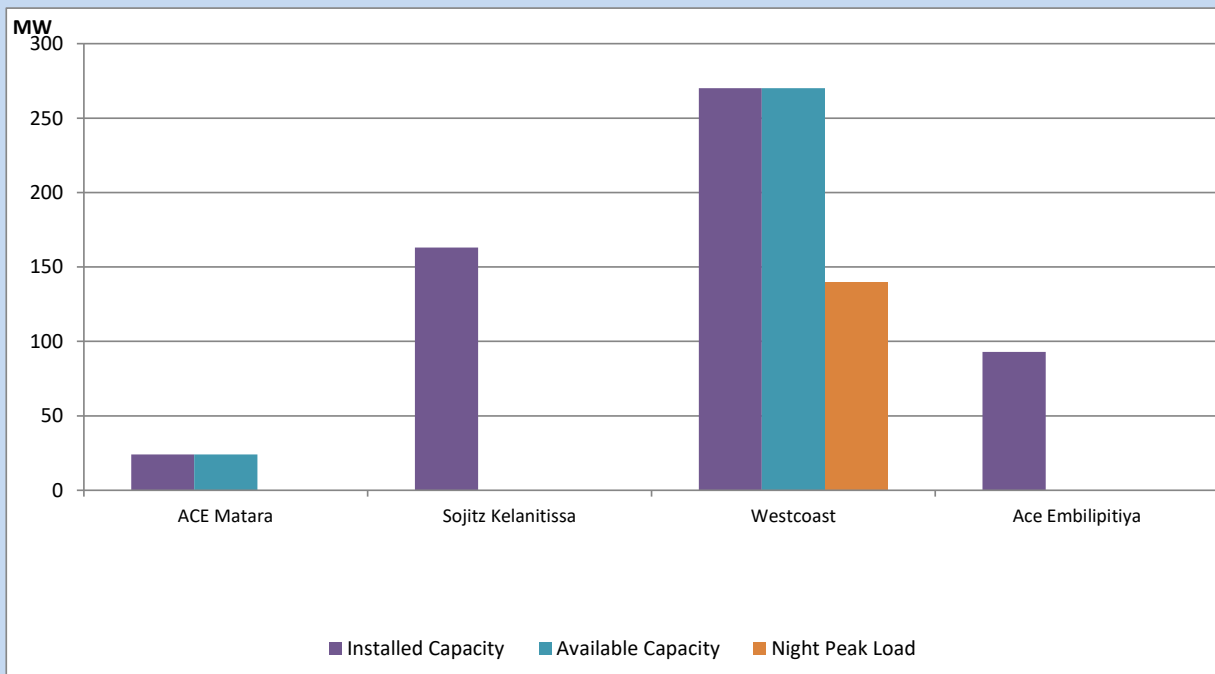
Asia Power, V Power Pallekale, Vpower Galle, V Power Horana, Vpower Hambantota, Vpower Valachchena and Altaqa Mahiyanganaya are not available due to expiration of PPAs



Available Generation is estimated based on plant availability at 6.00am on

September 14, 2022

IPP owned Thermal Plant Loading at the Night Peak

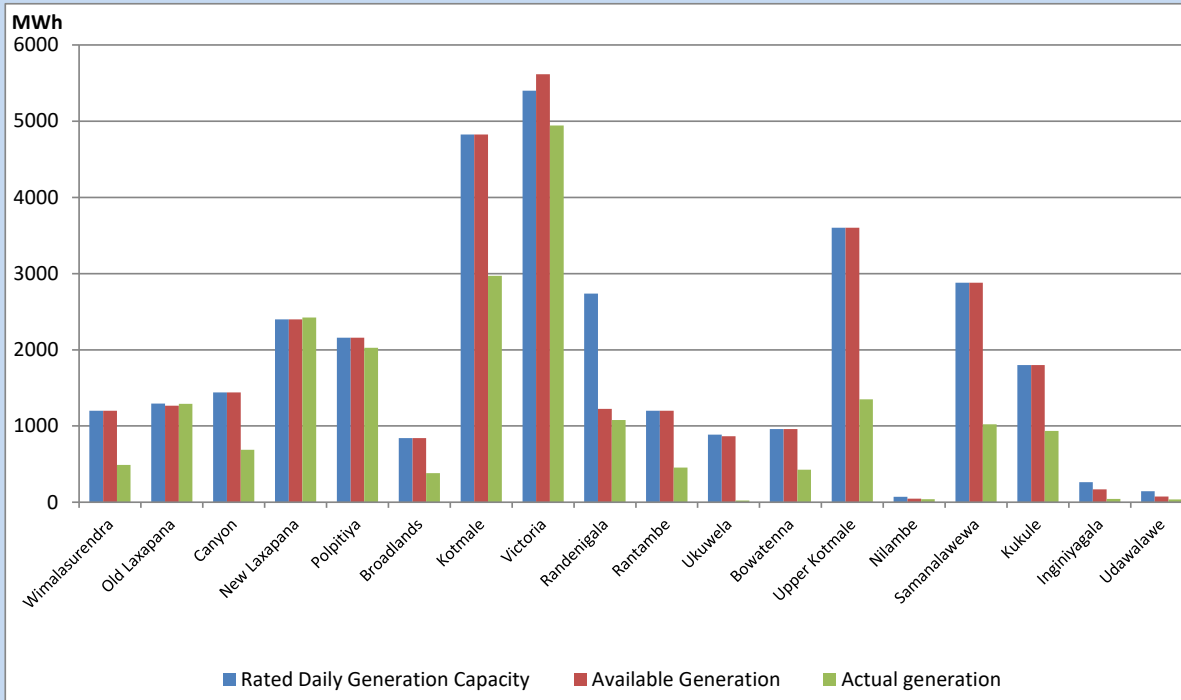


Note- Plant availability is recorded at 6.00 am on

September 14, 2022

Major Hydro Plant Dispatch

September 13, 2022

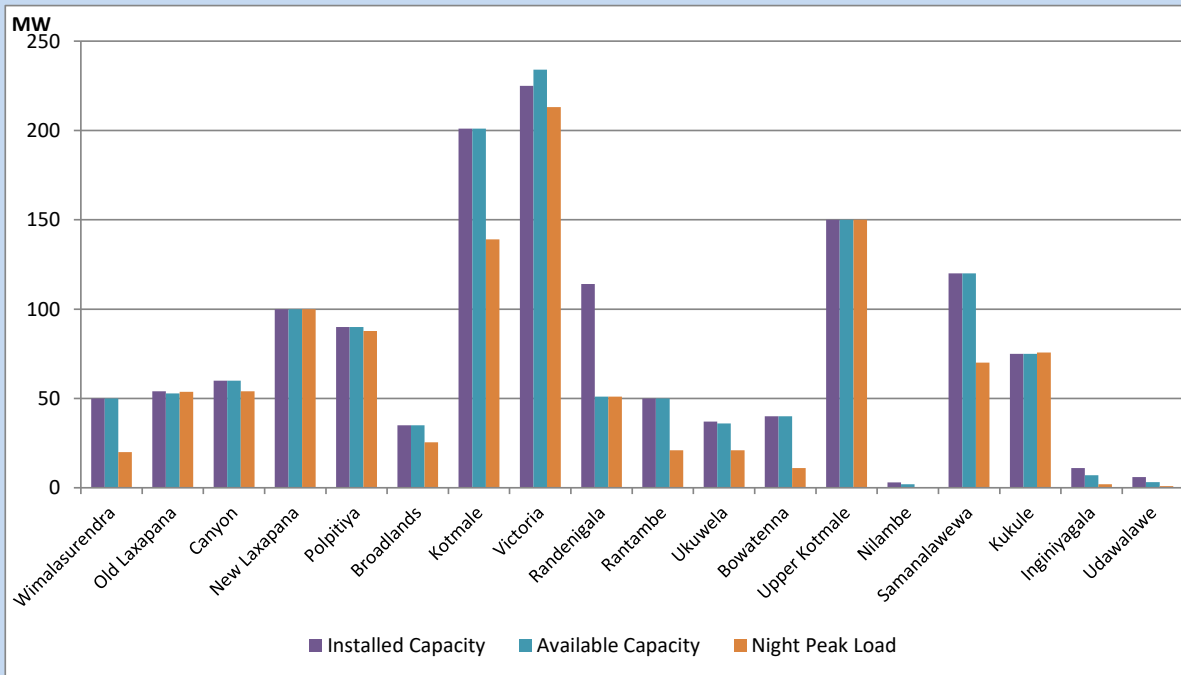


Available Generation is estimated based on plant availability at 6.00am on
Broadlands power plant is operating in the Commissioning Stage

September 14, 2022

Major Hydro Plant Loading at Night Peak

September 13, 2022



Note- Plant availability is recorded at 6.00 am on
Broadlands power plant is operating in the Commissioning Stage

September 14, 2022

Summary of Major Plant performance

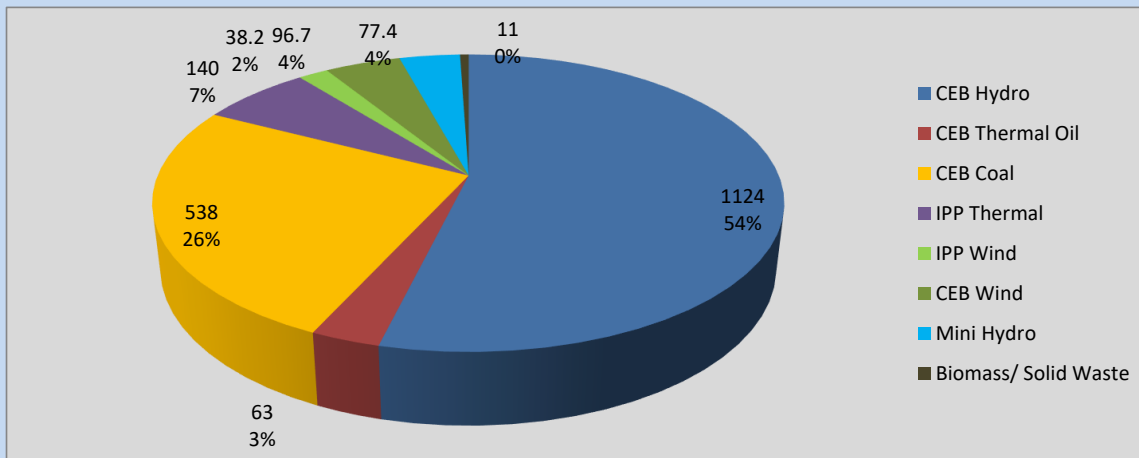
Plant	Installed Capacity	Plant Availability	Night peak Load	Plant Dispatch
	(MW)	(MW)	(MW)	(MWh)
Wimalasurendra	50	50	20	489
Old Laxapana	54	53	54	1,292
Canyon	60	60	54	687
New Laxapana	100	100	100	2,422
Polpitiya	90	90	88	2,025
Broadlands	35	35	25	380
Kotmale	201	201	139	2,970
Victoria	225	234	213	4,944
Randenigala	114	51	51	1,080
Rantambe	50	50	21	455
Ukuwela	37	36	21	24
Bowatenna	40	40	11	427
Upper Kotmale	150	150	150	1,350
Nilambe	3	2	0	38
Samanalawewa	120	120	70	1,021
Kukule	75	75	76	936
Inginiyagala	11	7	2	44
Udawalawe	6	3	1	35
Puttalam Coal I	270	270	268	6,423
Puttalam Coal II	270	0	0	0
Puttalam Coal III	270	270	270	6,509
KPS Small GTs	64	0	0	0
KPS GT 7	115	0	0	0
KCCP	161	0	0	0
Sapugaskanda A	70	34	0	0
Sapugaskanda B	70	63	63	836
Uthura Janani	26	24	0	0
Barge CEB	60	60	0	28
CEB-Thulhiriya	10	0	0	0
CEB-Kolonnawa	20	13	0	0
CEB-Mathugama	20	9	0	0
ACE Matara	24	24	0	0
Sojitz Kelanitissa	163	0	0	0
West Coast	270	270	140	1,296
ACE Embilipitiya	93	0	0	0
Total	3,397	2,394	2,060	41,937

Plant availability is the availability recorded at 6 am on

September 14, 2022

Contribution to the Night Peak in MW

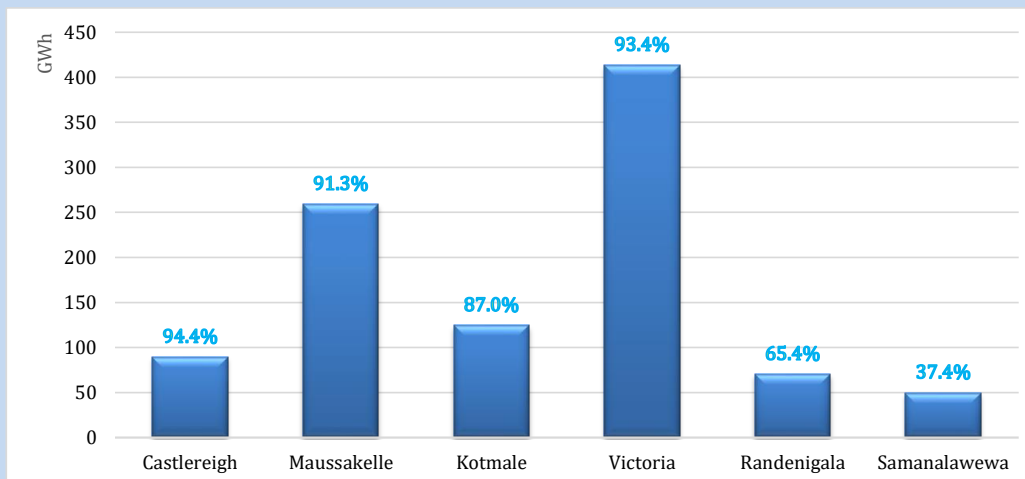
September 13, 2022



Night Peak*	2,087.9 MW
Day Peak	1,970.5 MW
Minimum Demand	1,243.1 MW

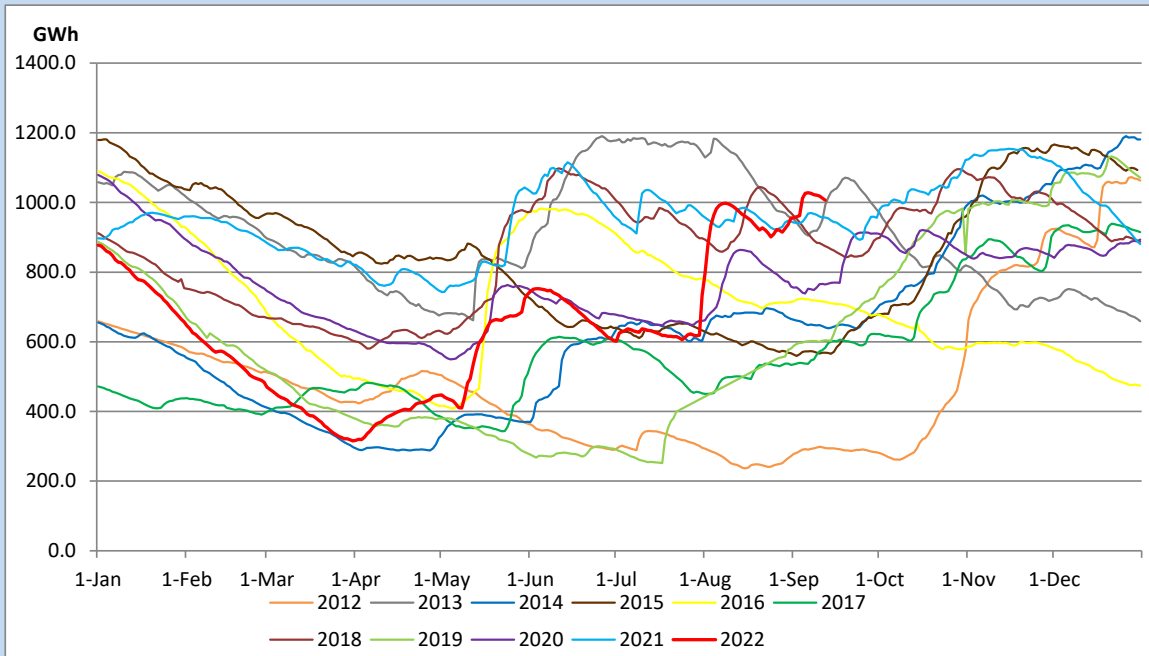
Above figures are excluding contribution from Roof Top Solar, 1MW solar, certain Wind plants and Mini Hydro plants

Reservoir Levels - as at 06.00 Hr on September 14, 2022

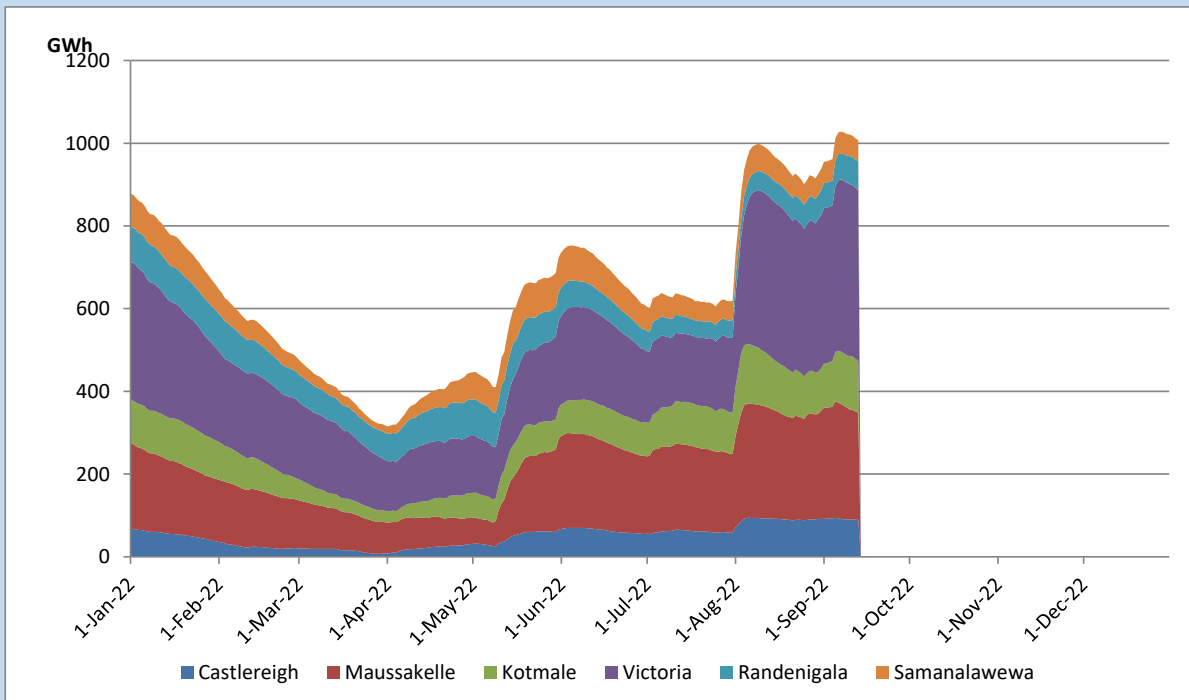


Total Reservoir Level	1006.6 GWh
% of Total capacity	83.5%

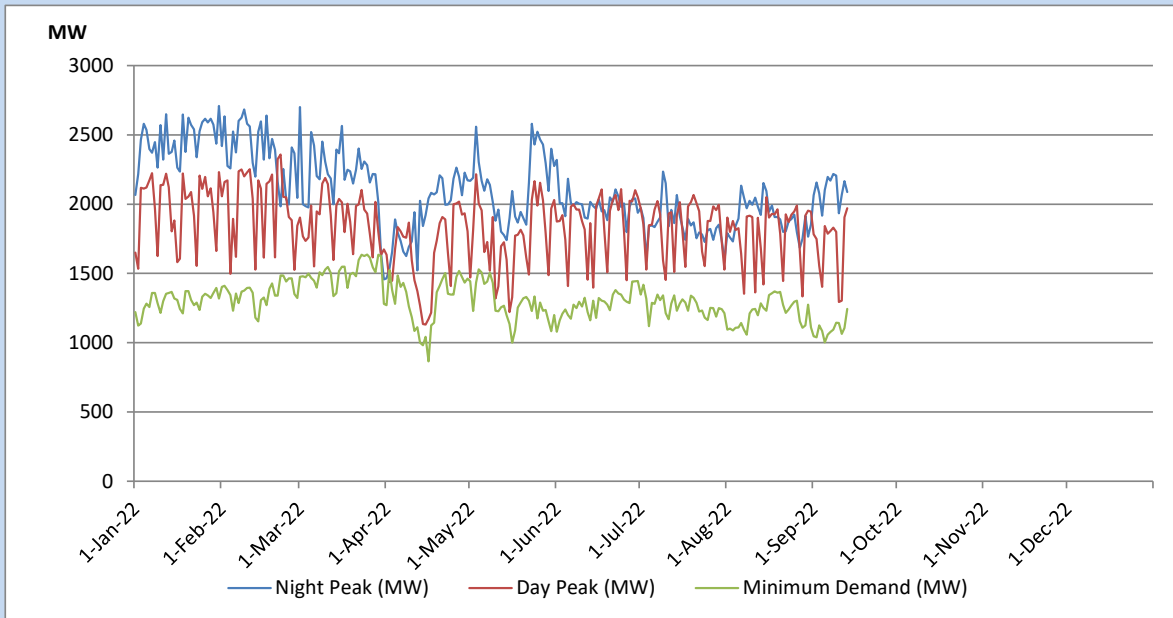
Comparison of Total Reservoir Storage Levels with Past Years



Variation of Major Hydro Reservoir Levels in the current year (GWh)



Variation of Demand during the current year

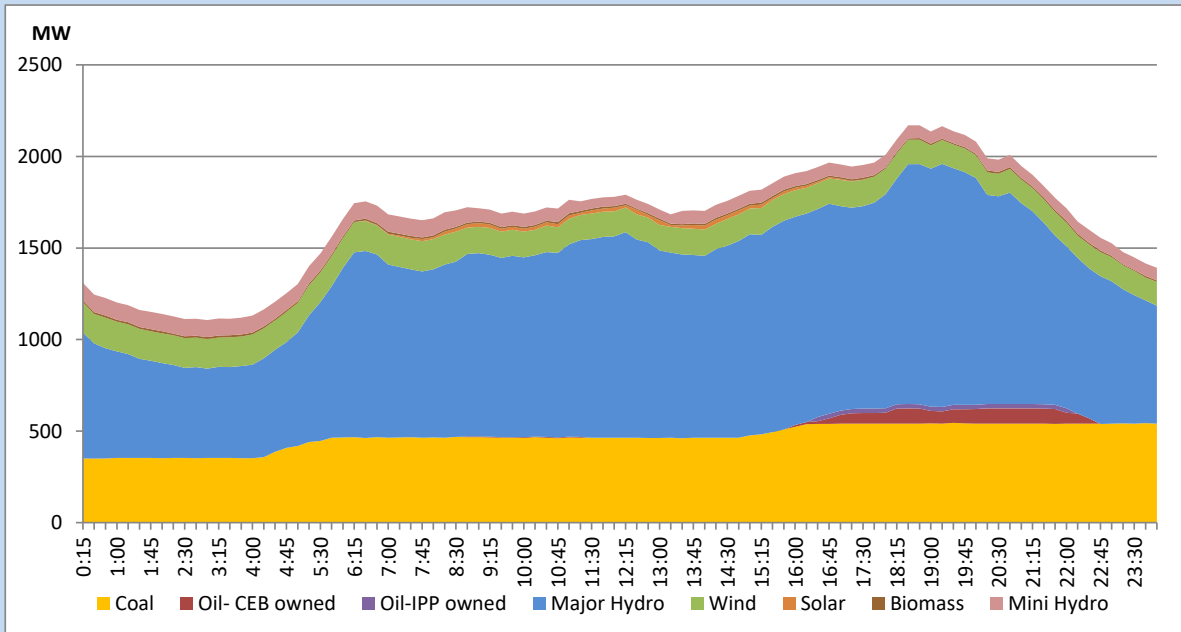


The above figures are excluding contribution from Roof Top Solar, 1MW solar, certain Wind plants and Mini Hydro plants

Daily Load Curve of the Previous day

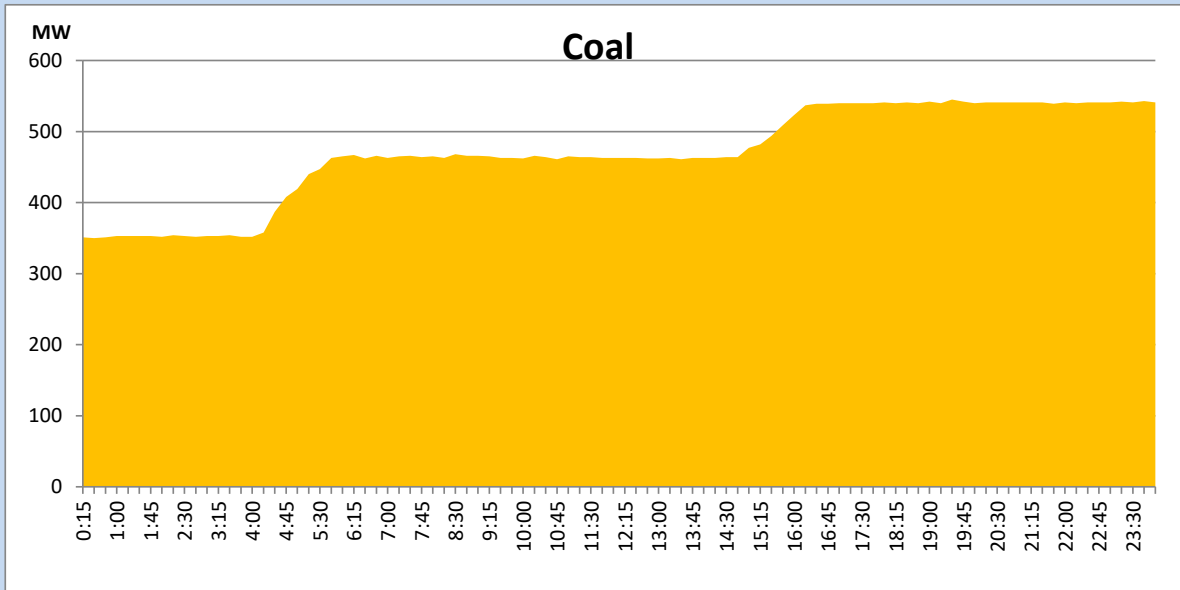
September 12, 2022

Solar and wind data is based on Telemetered Power Stations only



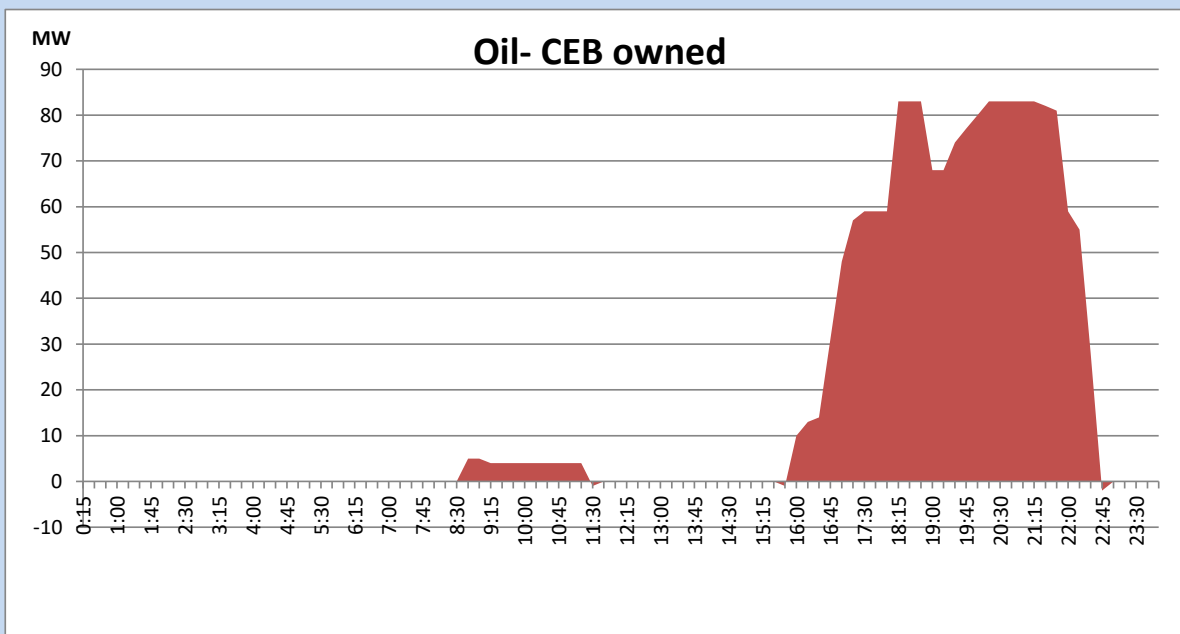
Coal Generation during the Previous day

September 12, 2022



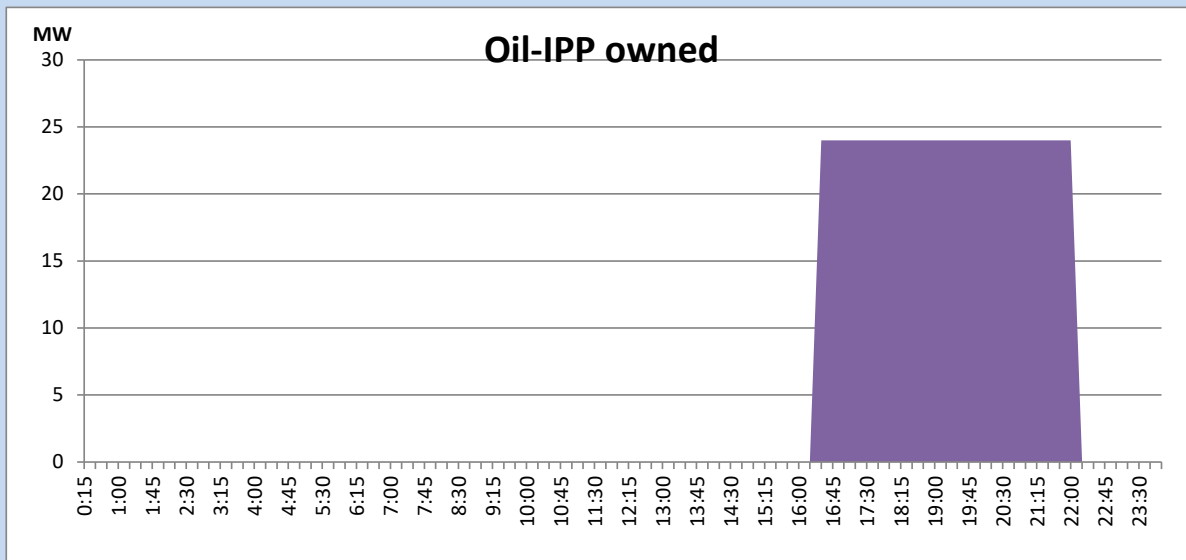
CEB Oil Plant Generation during the Previous day

September 12, 2022



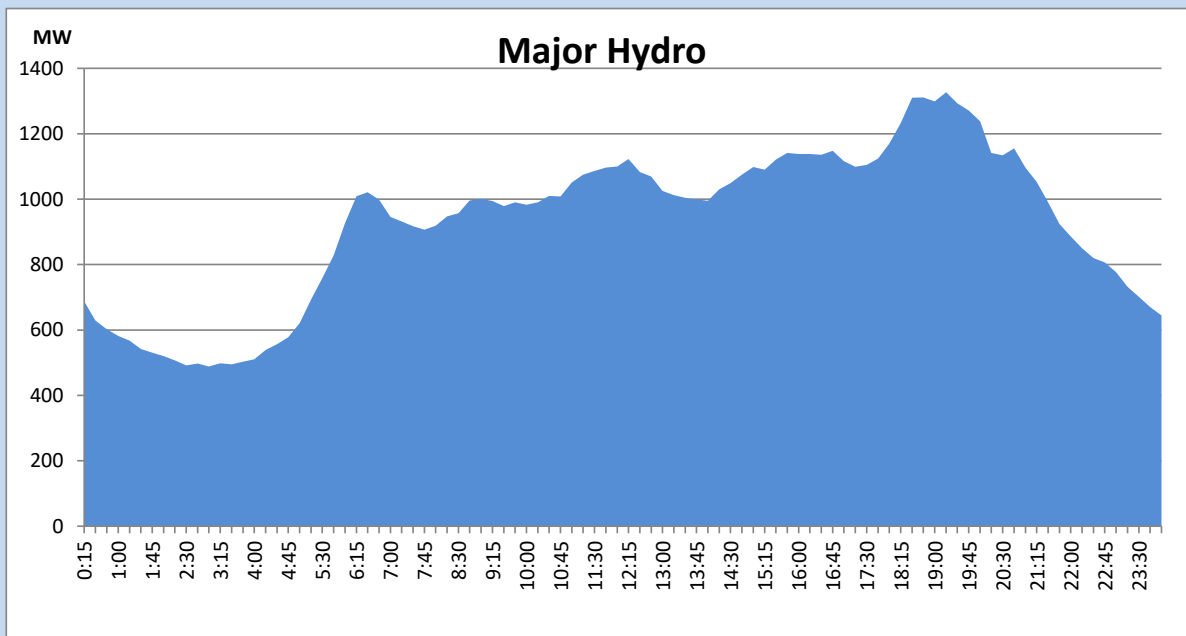
IPP Oil Plant Generation during the Previous day

September 12, 2022



Major Hydro Generation during the Previous day

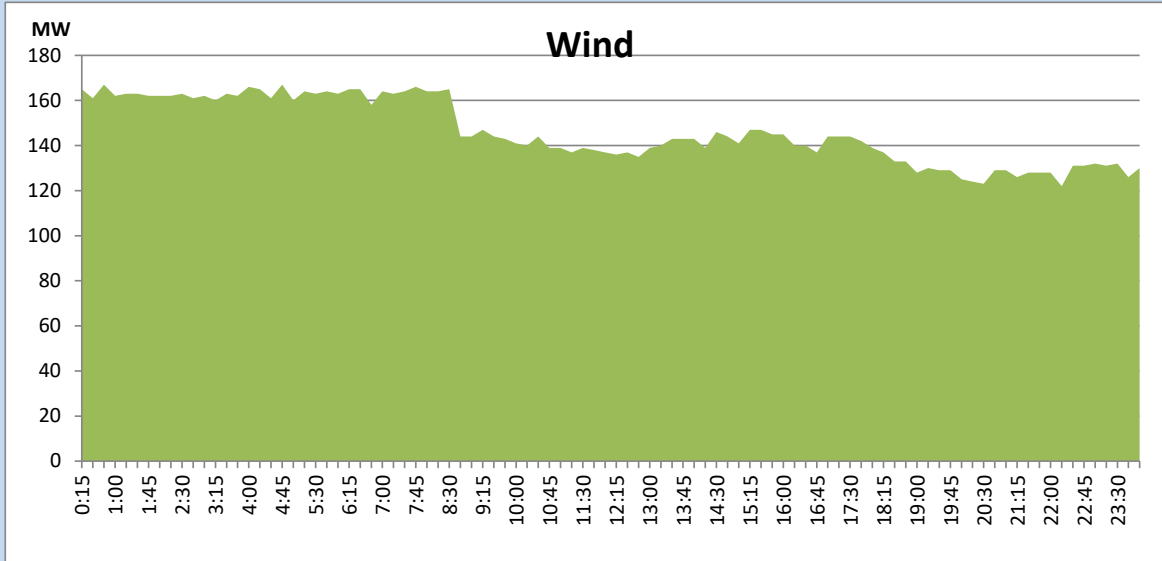
September 12, 2022



Wind Generation during the Previous day

September 12, 2022

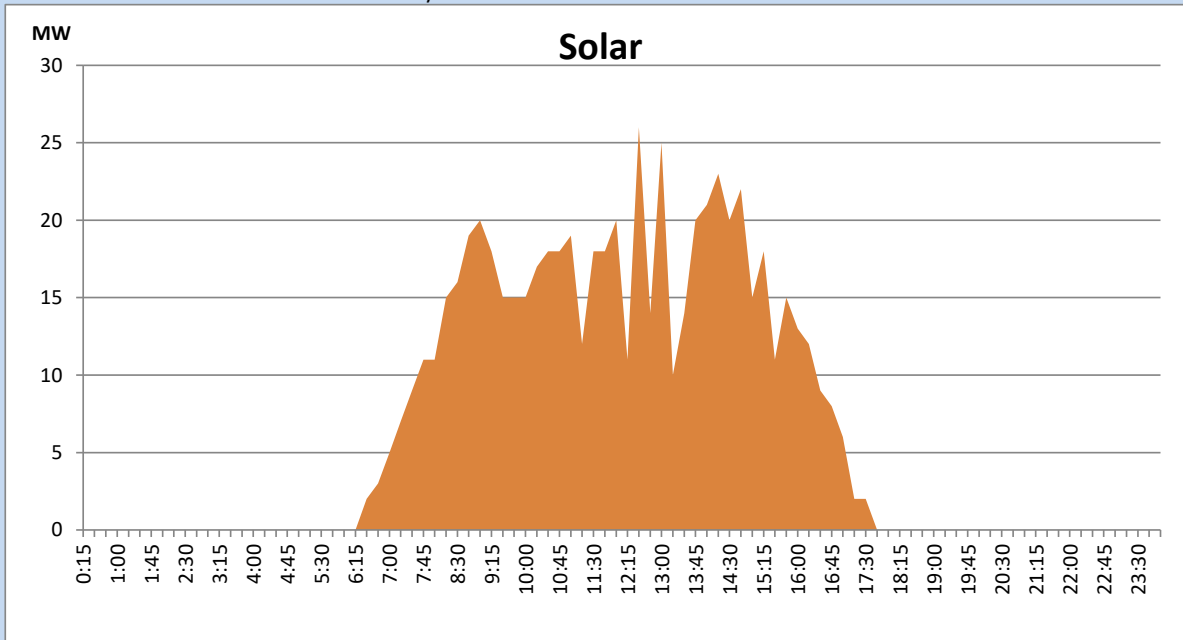
Based on Telemetered Power Stations only



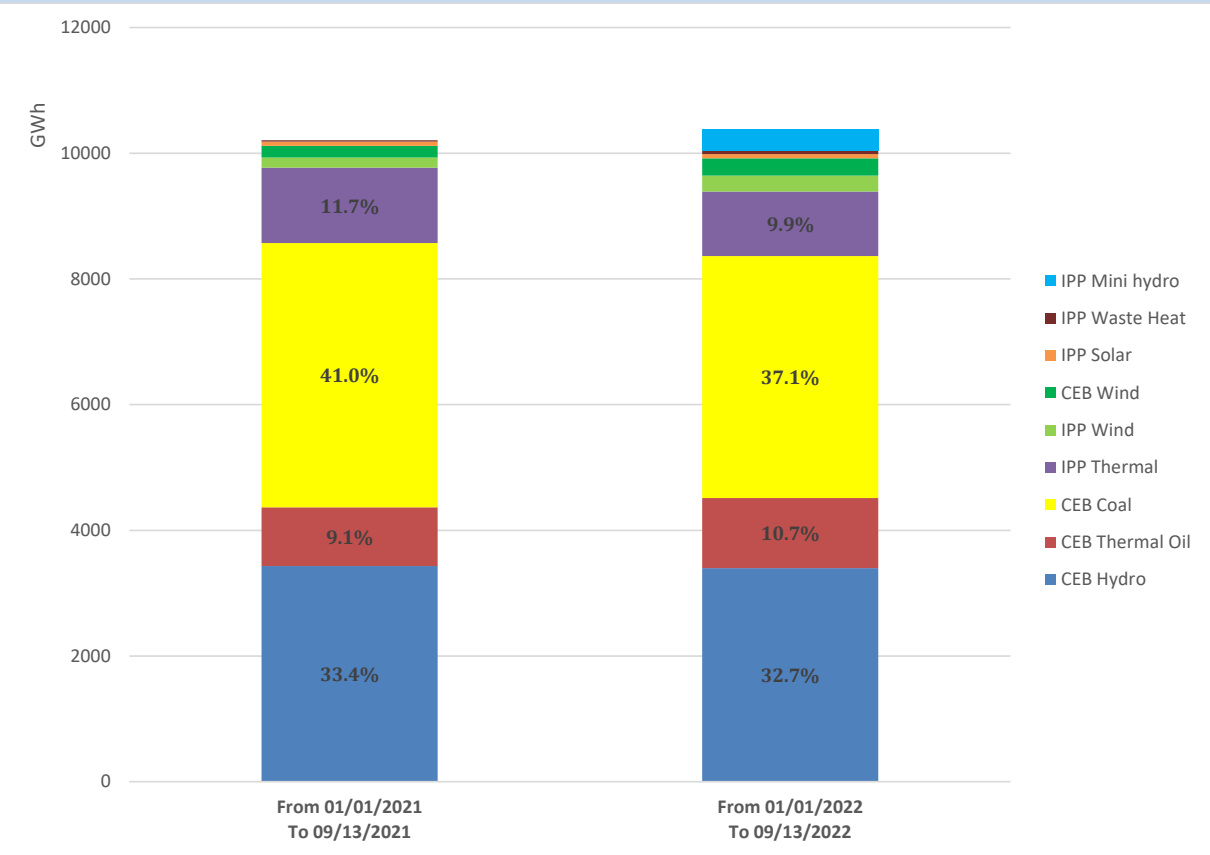
Solar Generation during the Previous day

September 12, 2022

Based on Telemetered Power Stations only



Cumulative Dispatch Comparison with Last Year



Thermal Plant Fuel types

Power Station	Primary Fuel
CEB Thermal	
Sapugaskanda 1	Heavy Fuel
Sapugaskanda 2	Heavy Fuel
Kelanitissa Small Gas Turbines	Auto Diesel
GT 7 - Kelanitissa	Auto Diesel
Kelanitissa CCY	Naphtha or Diesel
Lakvijaya 1	Coal
Lakvijaya 2	Coal
Lakvijaya 3	Coal
Uthuru Janani	Heavy Fuel
Barge CEB	Heavy Fuel

Power Station	Primary Fuel
Private Thermal	
Sojitz - Kelanitissa	Auto Diesel
West Coast	Auto Diesel / Heavy Fuel
ACE Matara	Heavy Fuel
ACE Embilipitiya	Heavy Fuel

Major Incidents during the day -as reported by CEB morning of

September 14, 2022

- 1) Rotational manual load shedding was carried out from 18:00hrs to 21:00hrs.
- 2) Kotmale unit 02 made unavailable at 4:25hrs due to stator cooler leakage. Kotmale unit 02 is yet to resume generation.