

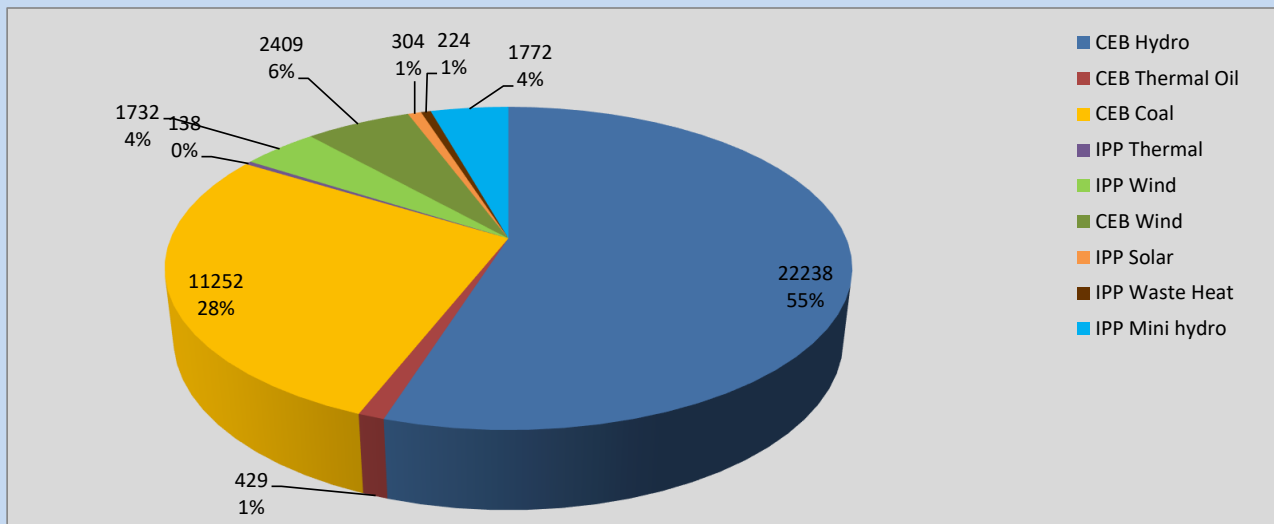
# Generation and Reservoirs Statistics

September 12, 2022



PUBLIC UTILITIES COMMISSION OF SRI LANKA

## Daily Generation Mix in MWh



**Total Generation** **40,498 MWh**

Note: Above data is excluding contribution from Roof Top Solar, 1MW Solar and certain Mini Hydro plants

## Cumulative Dispatch

Note: Following data is Excluding contribution from Roof Top Solar, 1MW solar and Mini Hydro plants

### For Current Month

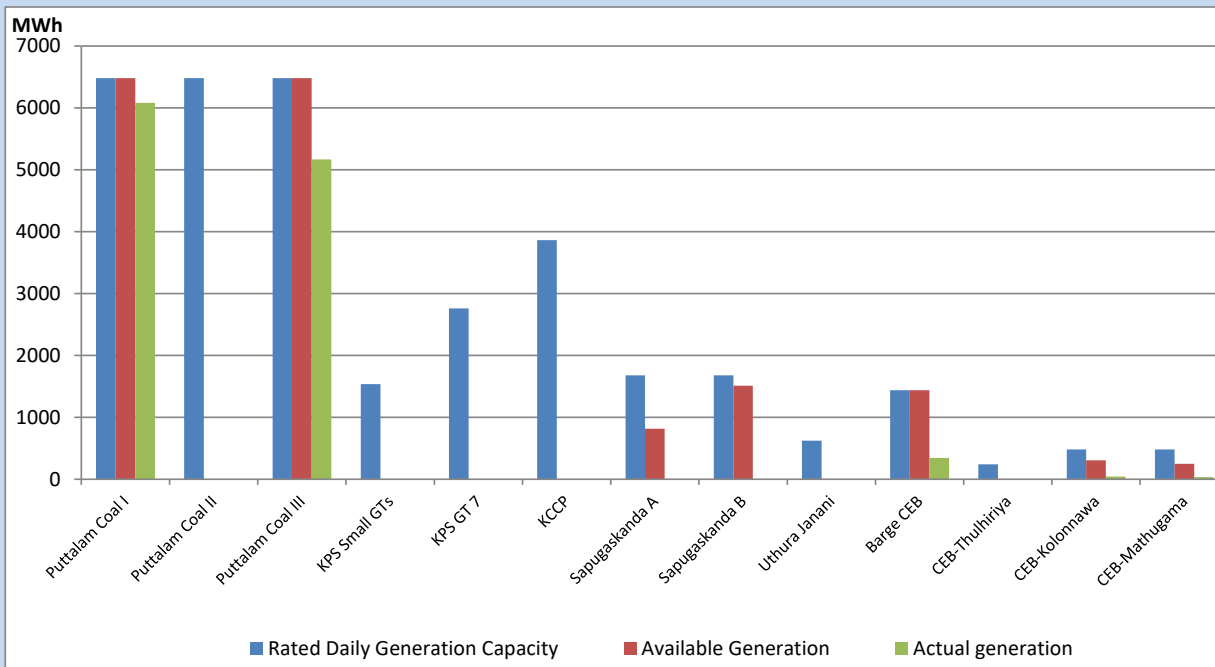
Category	Dispatch (GWh)	Percentage
CEB Hydro	243.41	54.07%
CEB Thermal Oil	2.08	0.46%
CEB Coal	122.58	27.23%
IPP Thermal	0.23	0.05%
SPP Wind	22.76	5.06%
CEB Wind	26.91	5.98%
SPP Solar	3.35	0.74%
SPP Solid Waste	2.75	0.61%
Mini Hydro	26.14	5.81%
<b>Total</b>	<b>450.21</b>	

### For Current Year

Category	Dispatch (GWh)	Percentage
CEB Hydro	3,377.1	32.68%
CEB Thermal Oil	1,114.4	10.78%
CEB Coal	3,835.7	37.12%
IPP Thermal	1,027.2	9.94%
SPP Wind	253.6	2.45%
CEB Wind	273.0	2.64%
SPP Solar	65.6	0.63%
SPP Solid Waste	51.9	0.50%
Mini Hydro	336.2	3.25%
<b>Total</b>	<b>10,334.3</b>	

## CEB owned Thermal Plant Dispatch

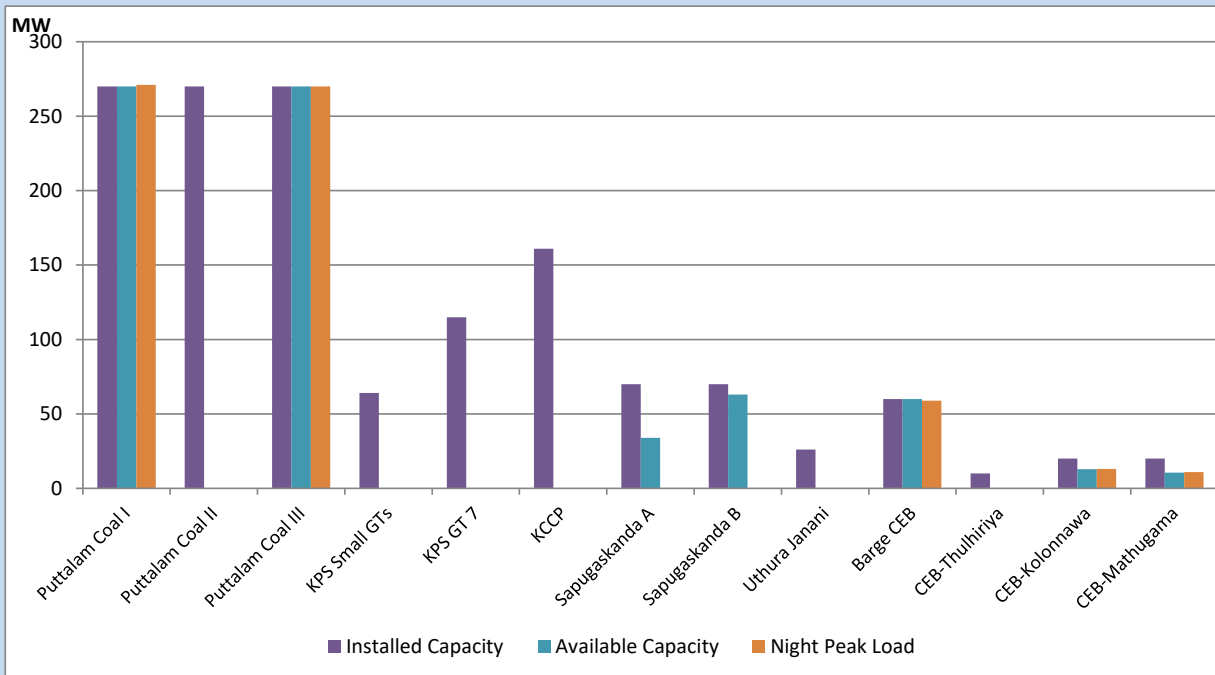
September 12, 2022



Available Generation is estimated based on plant availability at 6.00am on

September 13, 2022

## CEB owned Thermal Plant Loading at the Night Peak



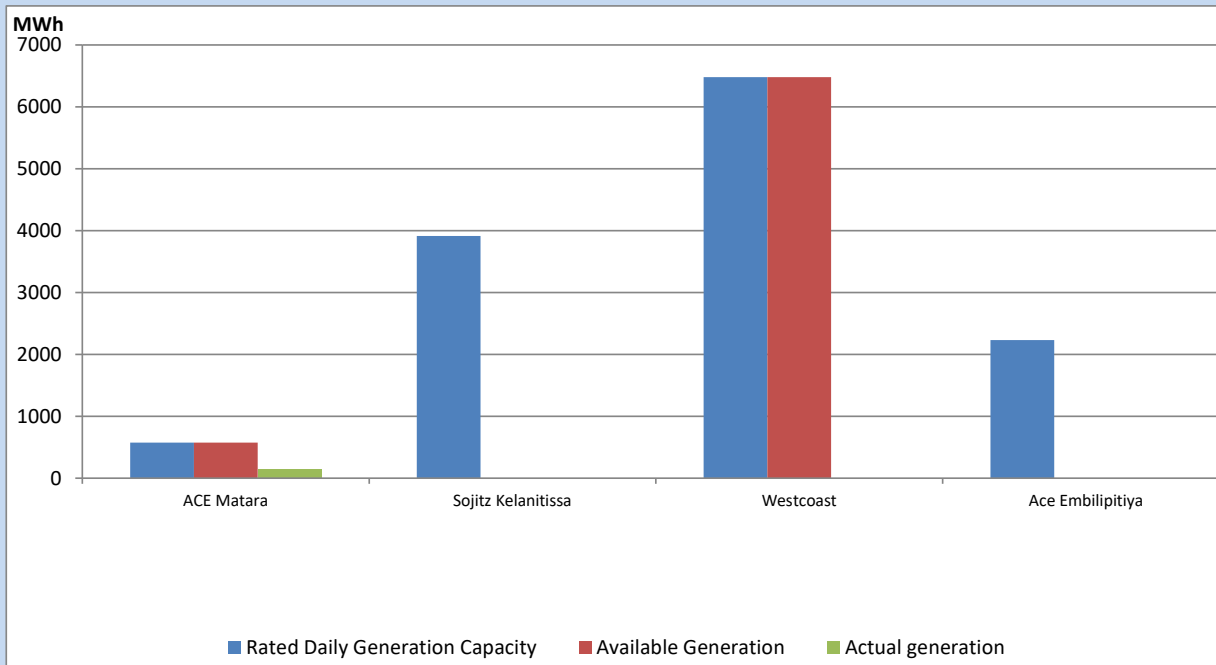
Note- Plant availability is recorded at 6.00 am on

September 13, 2022

## IPP owned Thermal Plant Dispatch

September 12, 2022

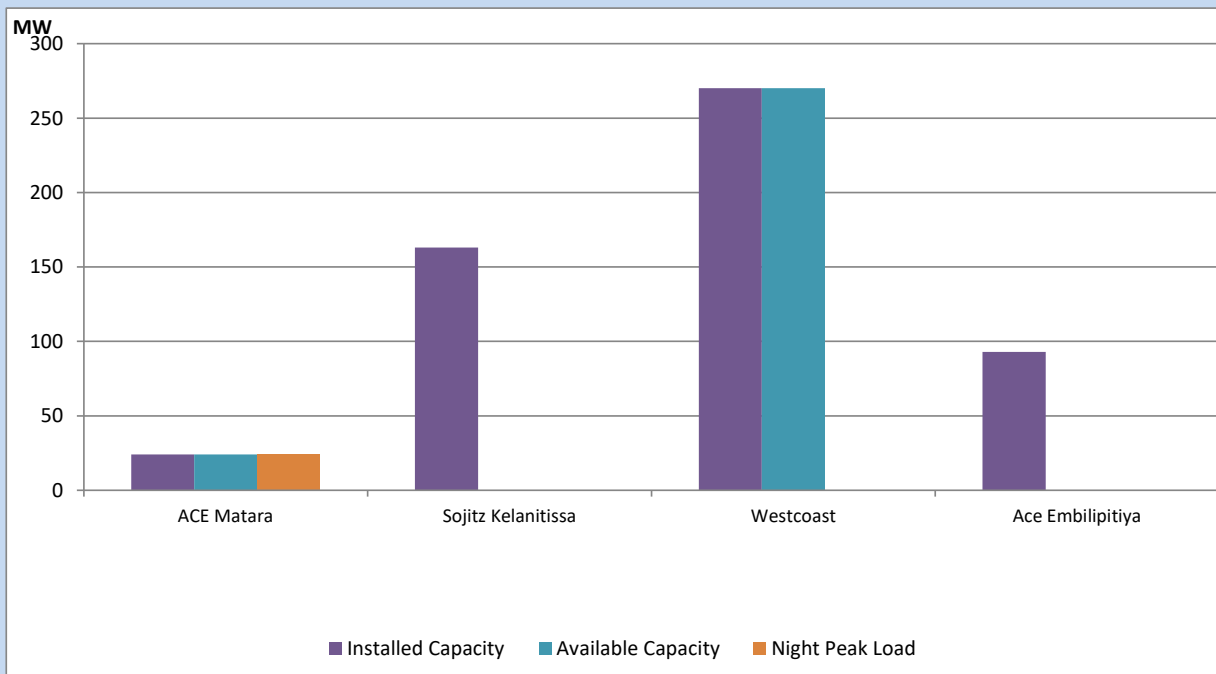
Asia Power, V Power Pallekale, Vpower Galle, V Power Horana, Vpower Hambantota, Vpower Valachchena and Altaqa Mahiyanganaya are not available due to expiration of PPAs



Available Generation is estimated based on plant availability at 6.00am on

September 13, 2022

## IPP owned Thermal Plant Loading at the Night Peak

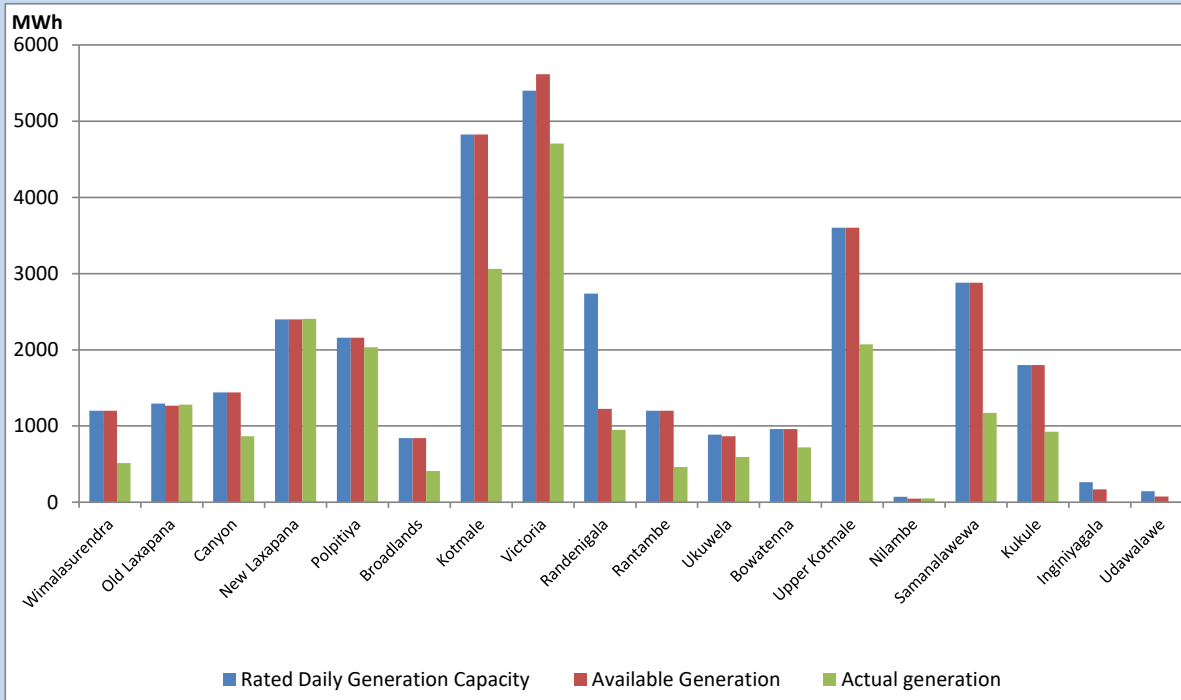


Note- Plant availability is recorded at 6.00 am on

September 13, 2022

## Major Hydro Plant Dispatch

September 12, 2022

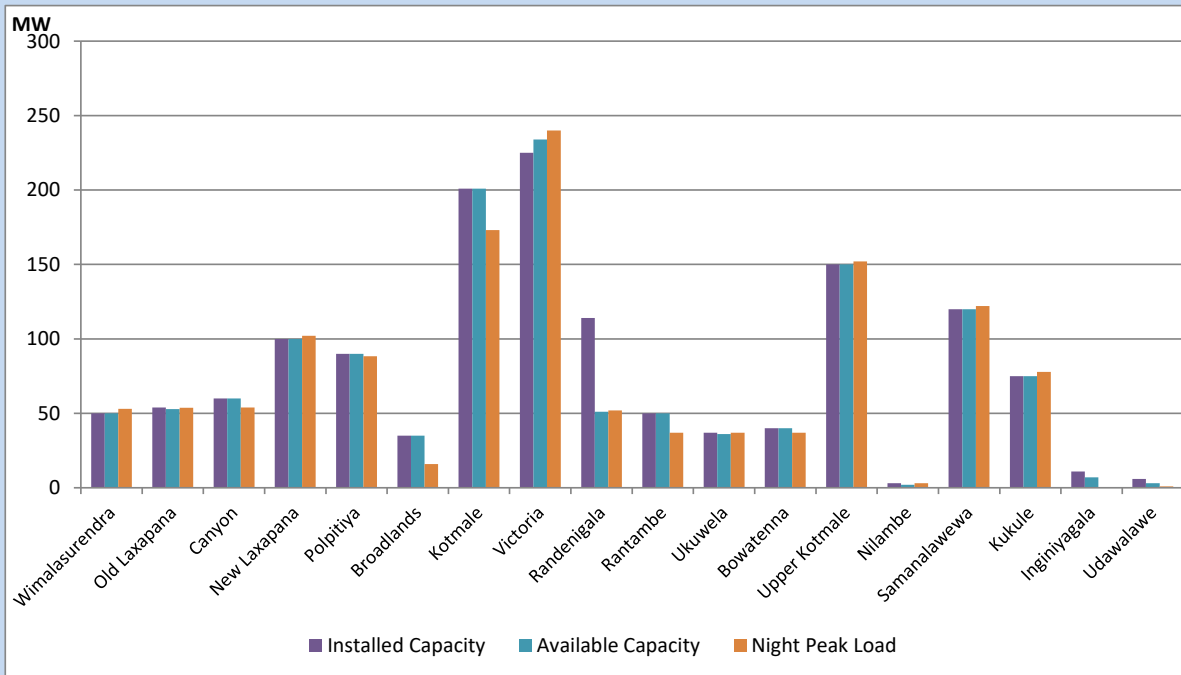


Available Generation is estimated based on plant availability at 6.00am on September 13, 2022  
 Broadlands power plant is operating in the Commissioning Stage

September 13, 2022

## Major Hydro Plant Loading at Night Peak

September 12, 2022



Note- Plant availability is recorded at 6.00 am on September 13, 2022  
 Broadlands power plant is operating in the Commissioning Stage

## Summary of Major Plant performance

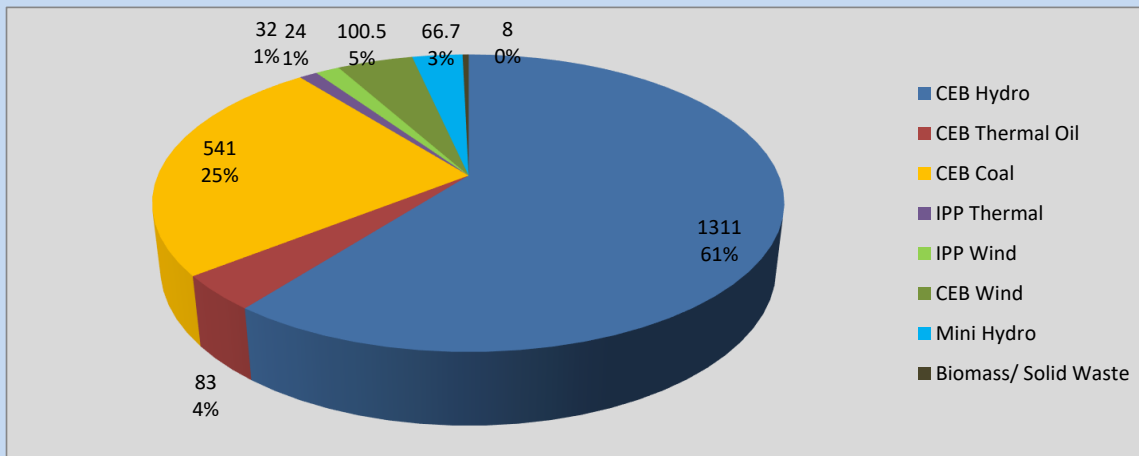
Plant	Installed Capacity	Plant Availability	Night peak Load	Plant Dispatch
	(MW)	(MW)	(MW)	(MWh)
Wimalasurendra	50	50	53	514
Old Laxapana	54	53	54	1,282
Canyon	60	60	54	866
New Laxapana	100	100	102	2,407
Polpitiya	90	90	88	2,034
Broadlands	35	35	16	410
Kotmale	201	201	173	3,060
Victoria	225	234	240	4,708
Randenigala	114	51	52	950
Rantambe	50	50	37	460
Ukuwela	37	36	37	595
Bowatenna	40	40	37	721
Upper Kotmale	150	150	152	2,073
Nilambe	3	2	3	51
Samanalawewa	120	120	122	1,173
Kukule	75	75	78	925
Inginiyagala	11	7	0	0
Udawalawe	6	3	1	9
Puttalam Coal I	270	270	271	6,082
Puttalam Coal II	270	0	0	0
Puttalam Coal III	270	270	270	5,170
KPS Small GTs	64	0	0	0
KPS GT 7	115	0	0	0
KCCP	161	0	0	0
Sapugaskanda A	70	34	0	0
Sapugaskanda B	70	63	0	0
Uthura Janani	26	0	0	0
Barge CEB	60	60	59	346
CEB-Thulhiriya	10	0	0	0
CEB-Kolonnawa	20	13	13	46
CEB-Mathugama	20	11	11	37
ACE Matara	24	24	24	138
Sojitz Kelanitissa	163	0	0	0
West Coast	270	270	0	0
ACE Embilipitiya	93	0	0	0
<b>Total</b>	<b>3,397</b>	<b>2,371</b>	<b>2,154</b>	<b>40,498</b>

Plant availability is the availability recorded at 6 am on

September 13, 2022

## Contribution to the Night Peak in MW

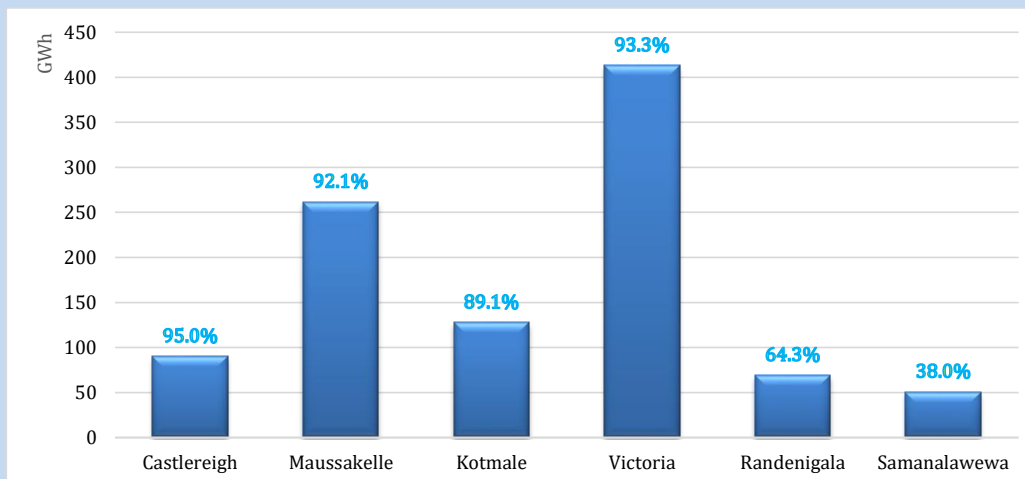
September 12, 2022



Night Peak*	2,166.3 MW
Day Peak	1,905.9 MW
Minimum Demand	1,105.4 MW

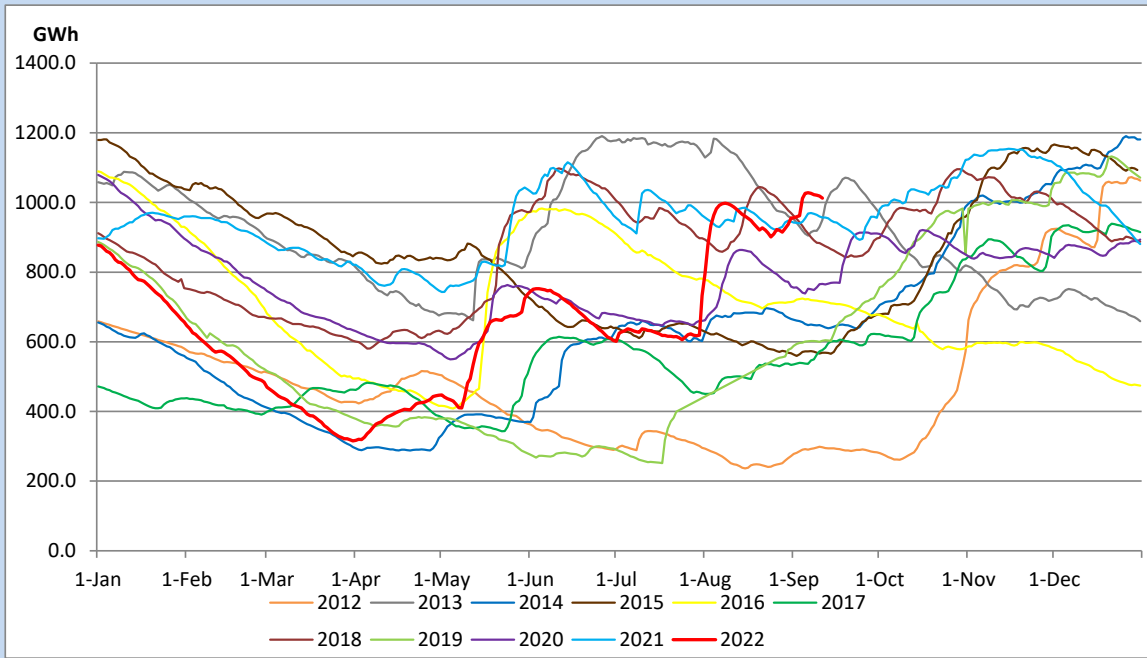
Above figures are excluding contribution from Roof Top Solar, 1MW solar, certain Wind plants and Mini Hydro plants

## Reservoir Levels - as at 06.00 Hr on September 13, 2022

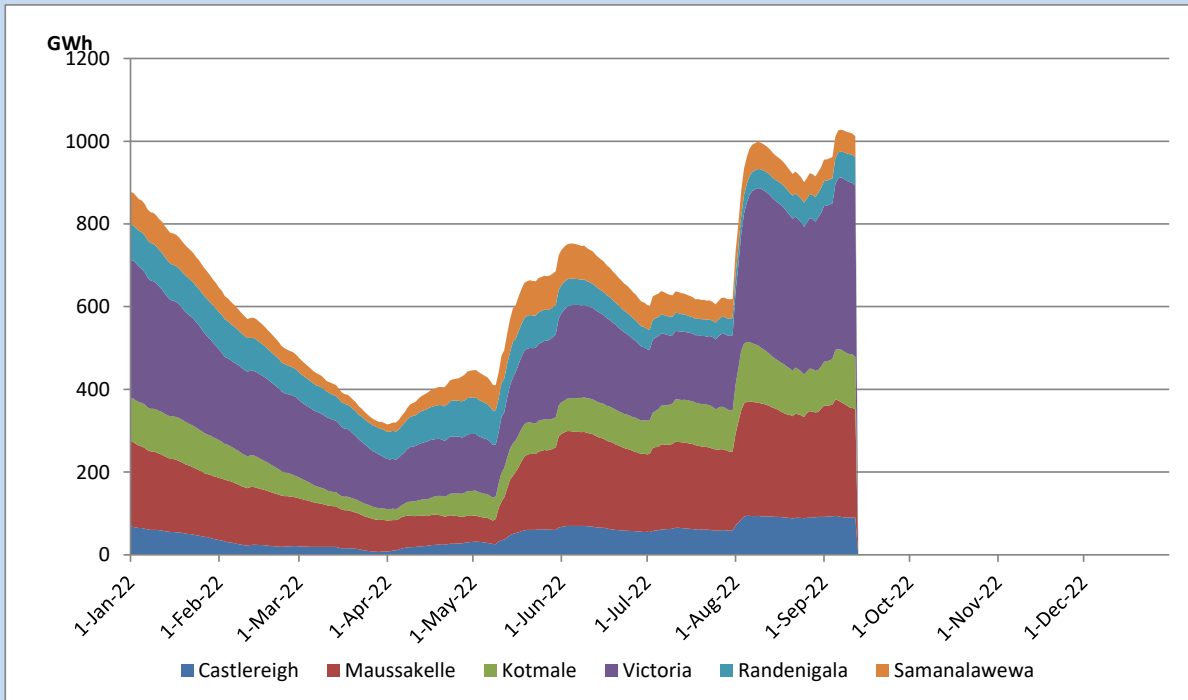


Total Reservoir Level	1012 GWh
% of Total capacity	83.9%

## Comparison of Total Reservoir Storage Levels with Past Years

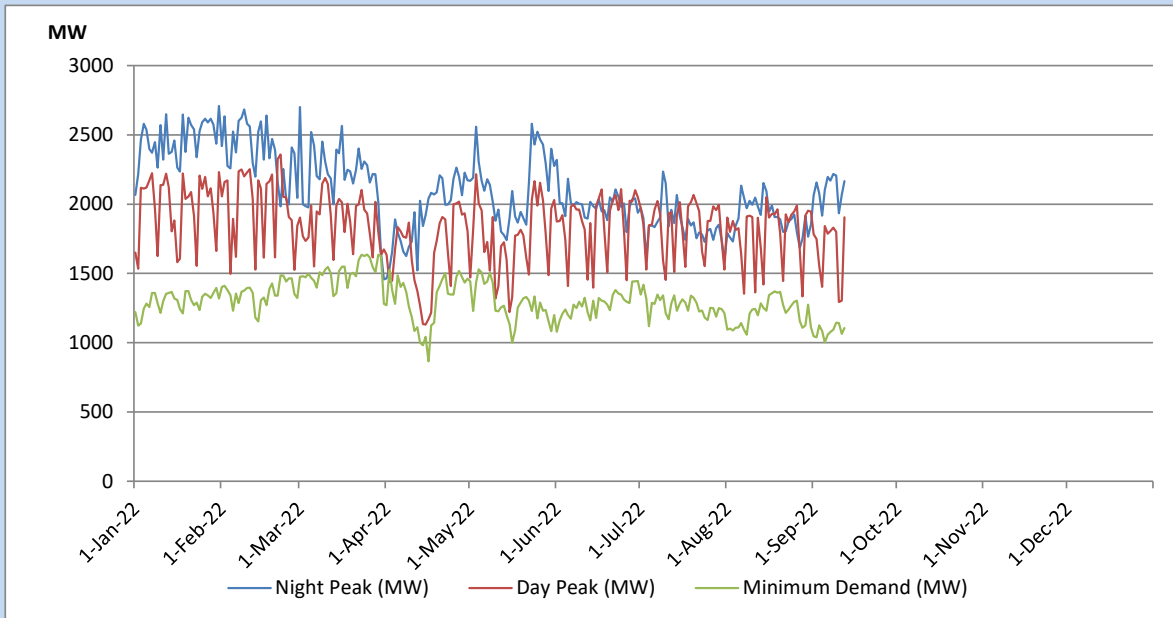


## Variation of Major Hydro Reservoir Levels in the current year (GWh)





## Variation of Demand during the current year

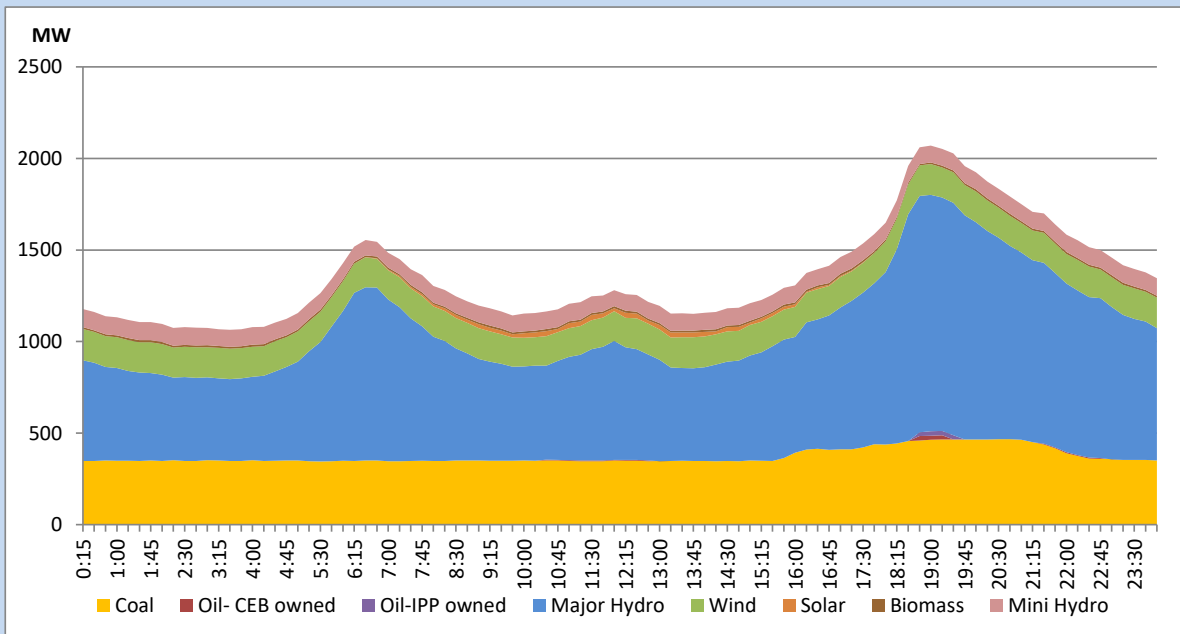


The above figures are excluding contribution from Roof Top Solar, 1MW solar, certain Wind plants and Mini Hydro plants

## Daily Load Curve of the Previous day

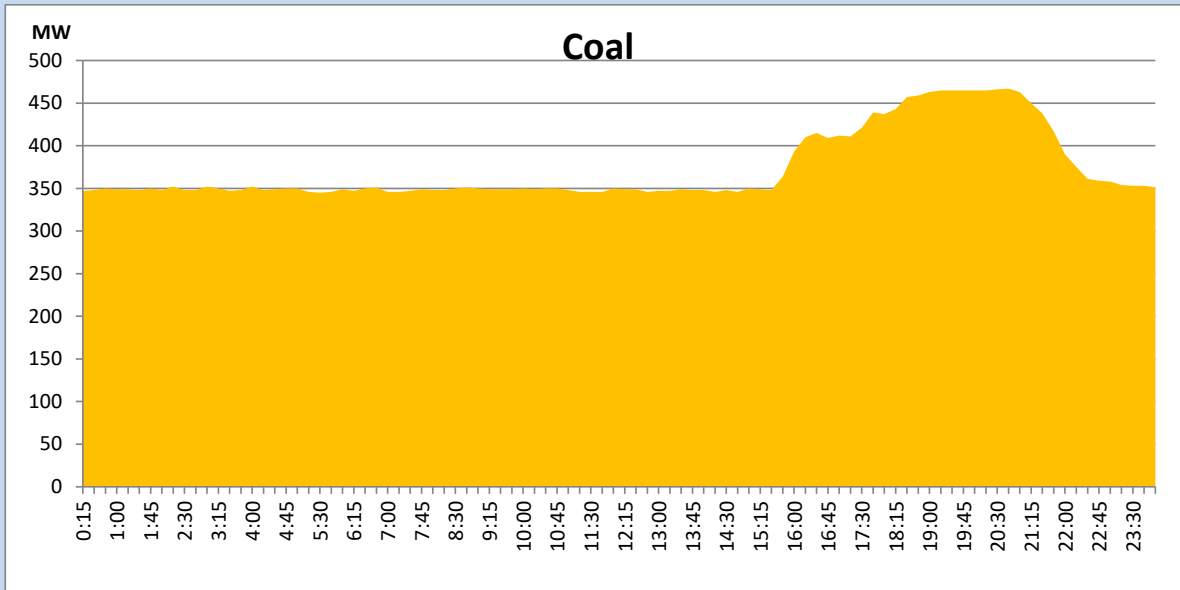
September 11, 2022

Solar and wind data is based on Telemetered Power Stations only



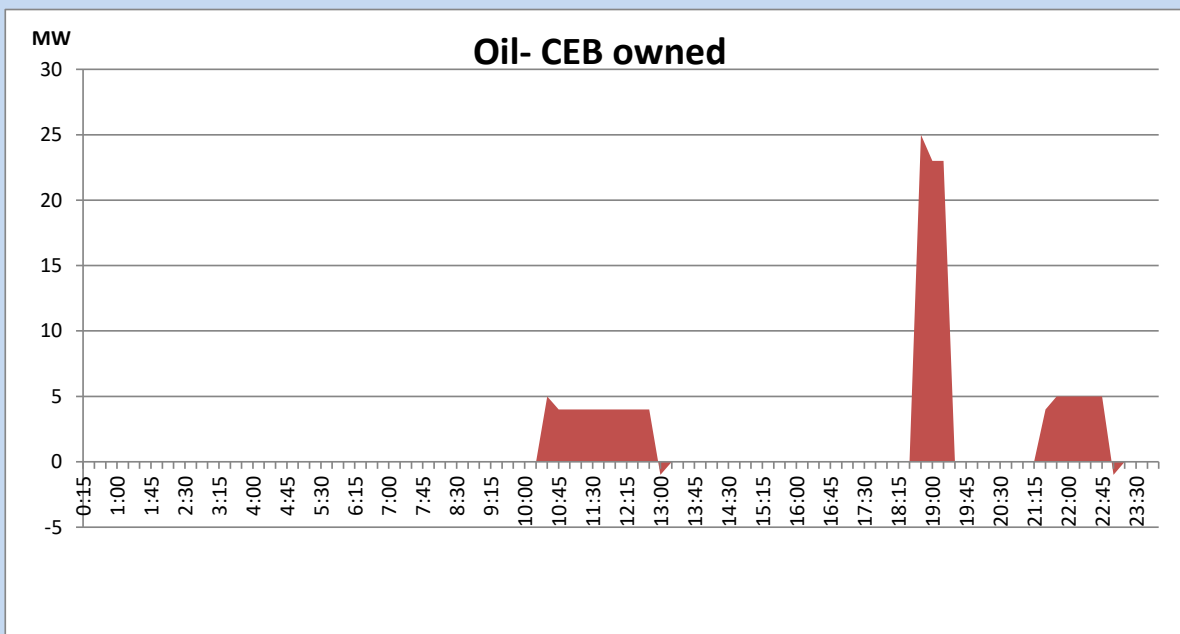
## Coal Generation during the Previous day

September 11, 2022



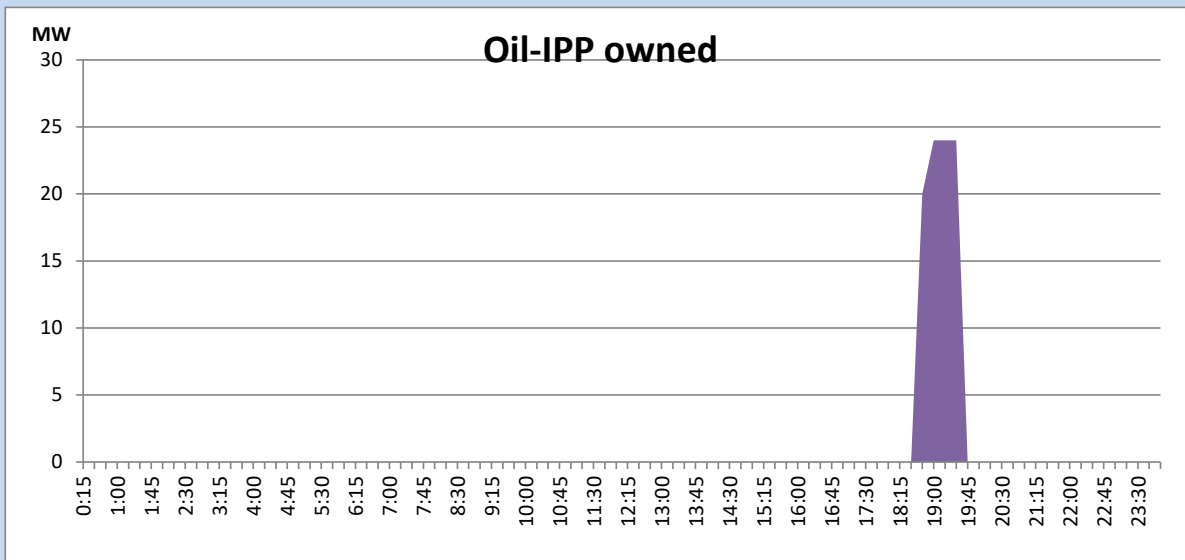
## CEB Oil Plant Generation during the Previous day

September 11, 2022



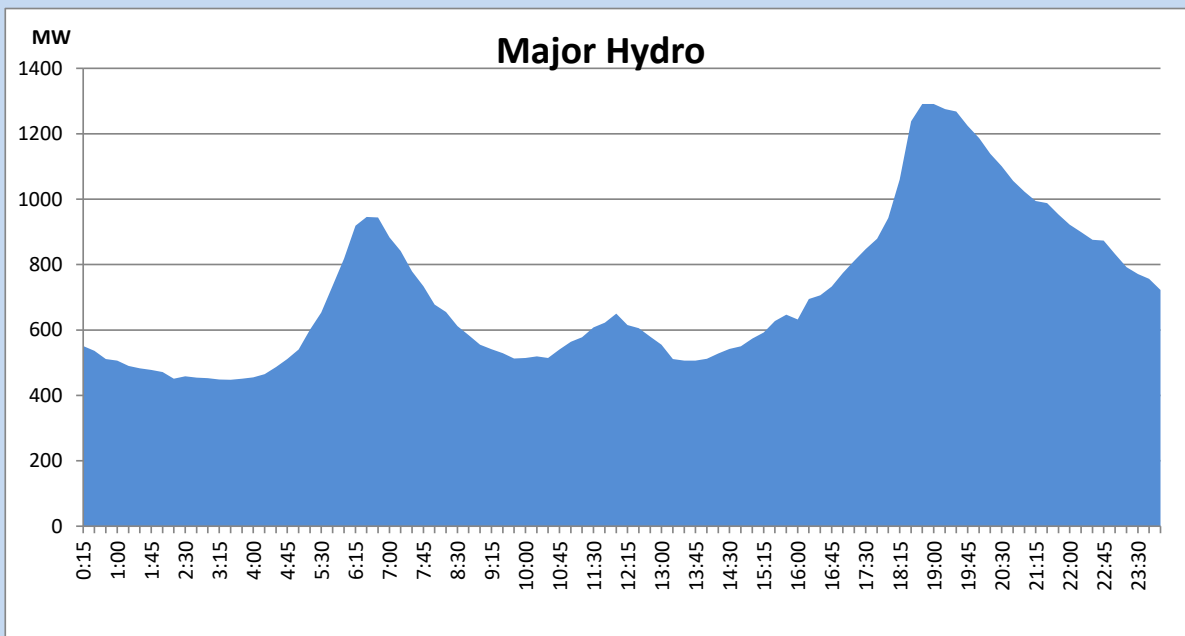
## IPP Oil Plant Generation during the Previous day

September 11, 2022



## Major Hydro Generation during the Previous day

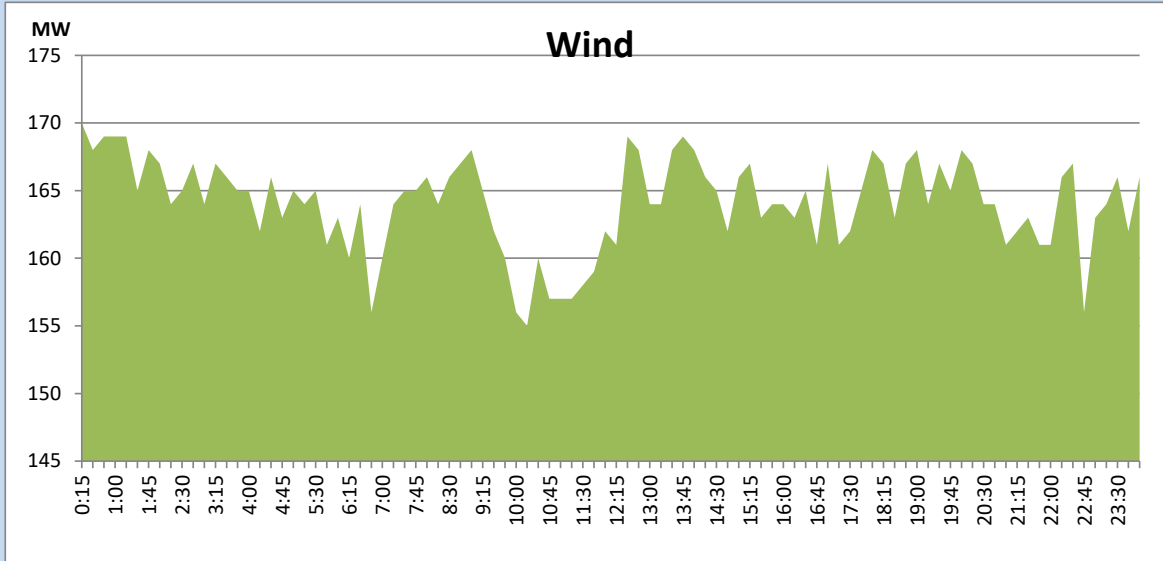
September 11, 2022



## Wind Generation during the Previous day

September 11, 2022

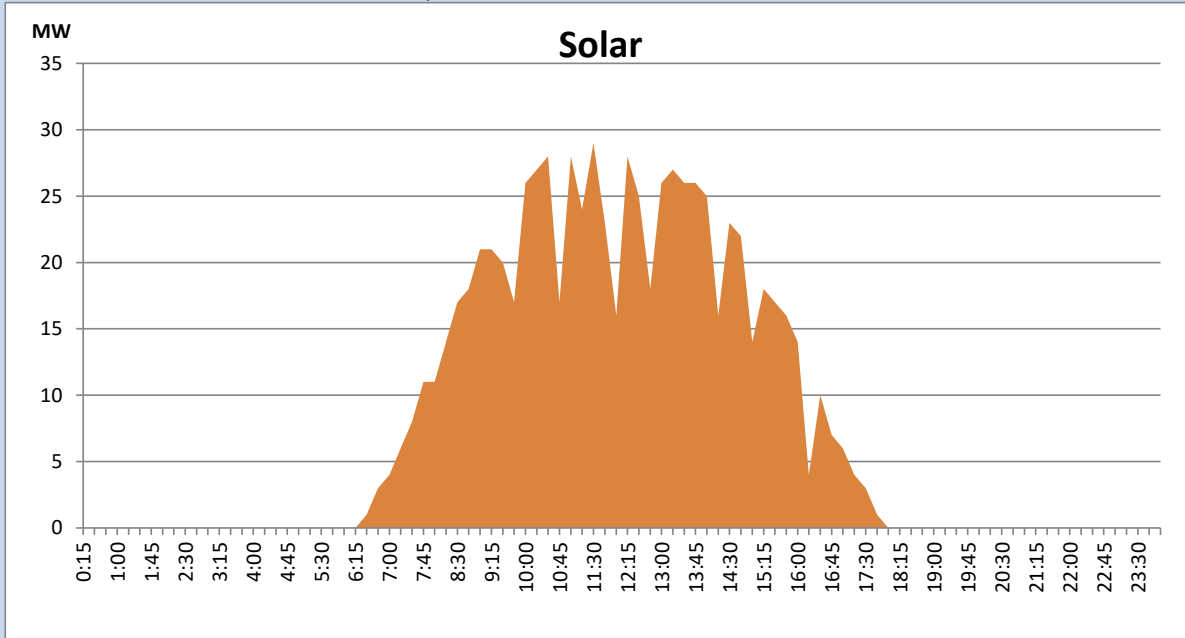
Based on Telemetered Power Stations only



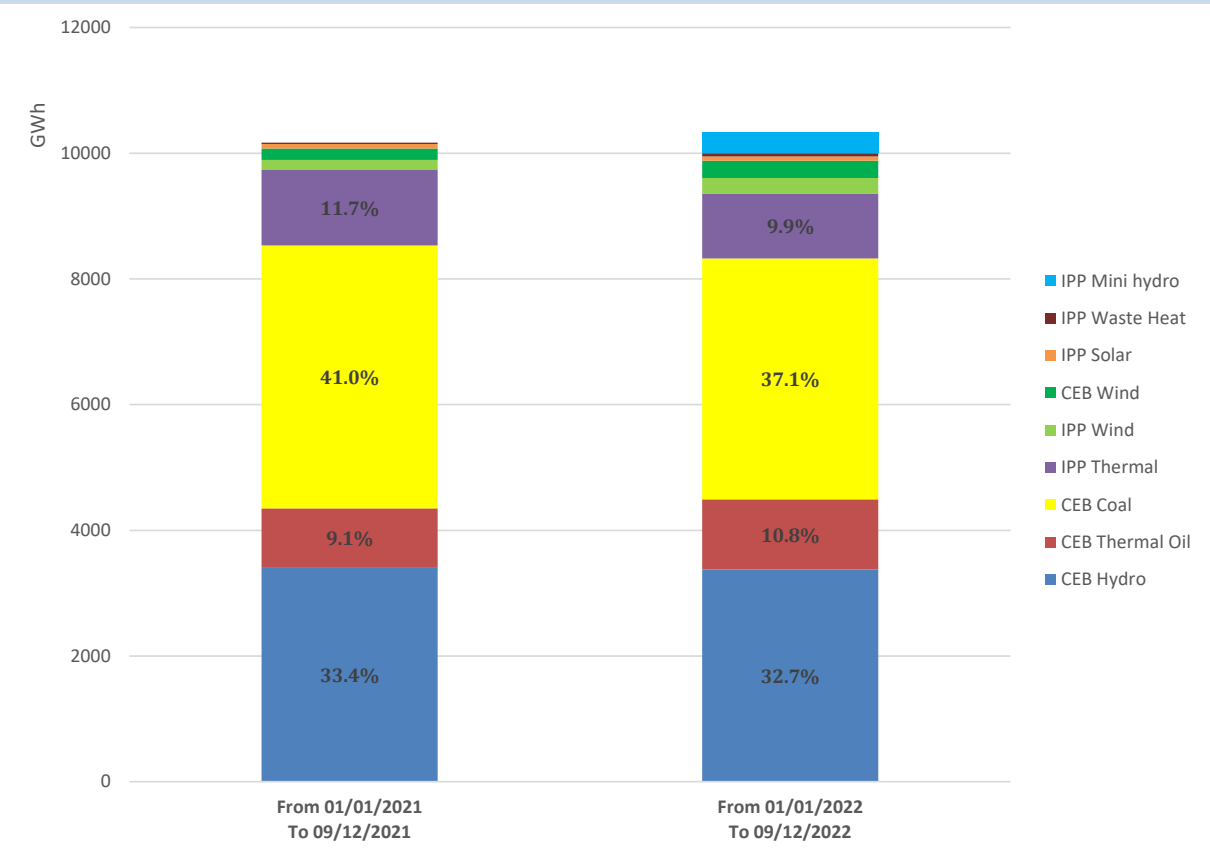
## Solar Generation during the Previous day

September 11, 2022

Based on Telemetered Power Stations only



# Cumulative Dispatch Comparison with Last Year



## Thermal Plant Fuel types

Power Station	Primary Fuel
CEB Thermal	
Sapugaskanda 1	Heavy Fuel
Sapugaskanda 2	Heavy Fuel
Kelanitissa Small Gas Turbines	Auto Diesel
GT 7 - Kelanitissa	Auto Diesel
Kelanitissa CCY	Naphtha or Diesel
Lakvijaya 1	Coal
Lakvijaya 2	Coal
Lakvijaya 3	Coal
Uthuru Janani	Heavy Fuel
Barge CEB	Heavy Fuel

Power Station	Primary Fuel
Private Thermal	
Sojitz - Kelanitissa	Auto Diesel
West Coast	Auto Diesel / Heavy Fuel
ACE Matara	Heavy Fuel
ACE Embilipitiya	Heavy Fuel

Major Incidents during the day -as reported by CEB morning of

September 13, 2022

1) New Polpitiya 220/132kV T/F 01 tripped at 10:35 hrs with T/F buchholz trip operated indication. The T/F was normalized by 17:02 hrs.