

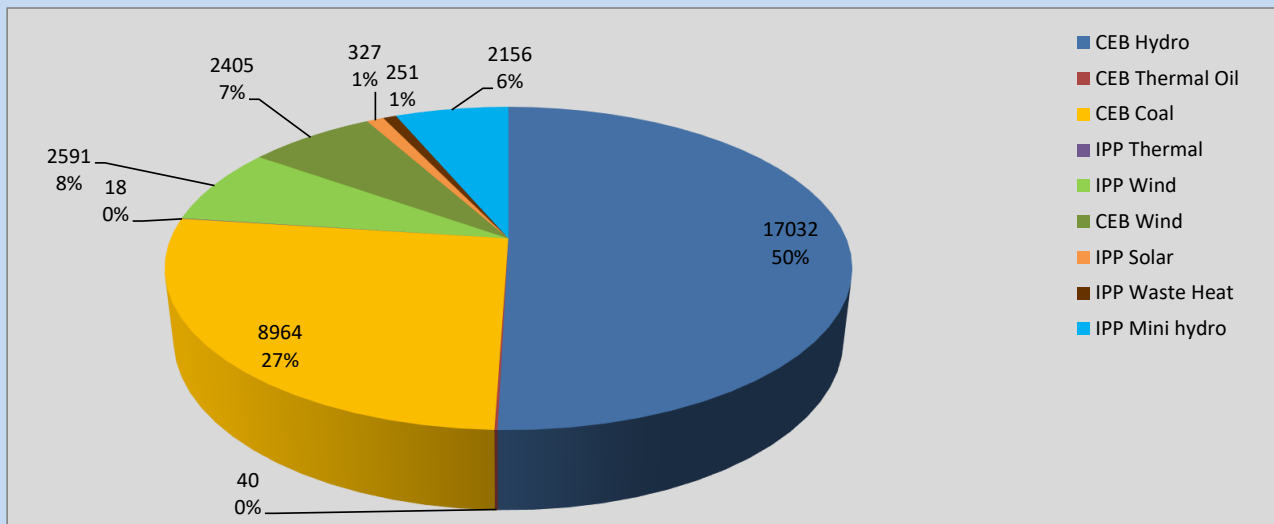
# Generation and Reservoirs Statistics

September 11, 2022



PUBLIC UTILITIES COMMISSION OF SRI LANKA

## Daily Generation Mix in MWh



**Total Generation** **33,784 MWh**

Note: Above data is excluding contribution from Roof Top Solar, 1MW Solar and certain Mini Hydro plants

## Cumulative Dispatch

Note: Following data is Excluding contribution from Roof Top Solar, 1MW solar and Mini Hydro plants

### For Current Month

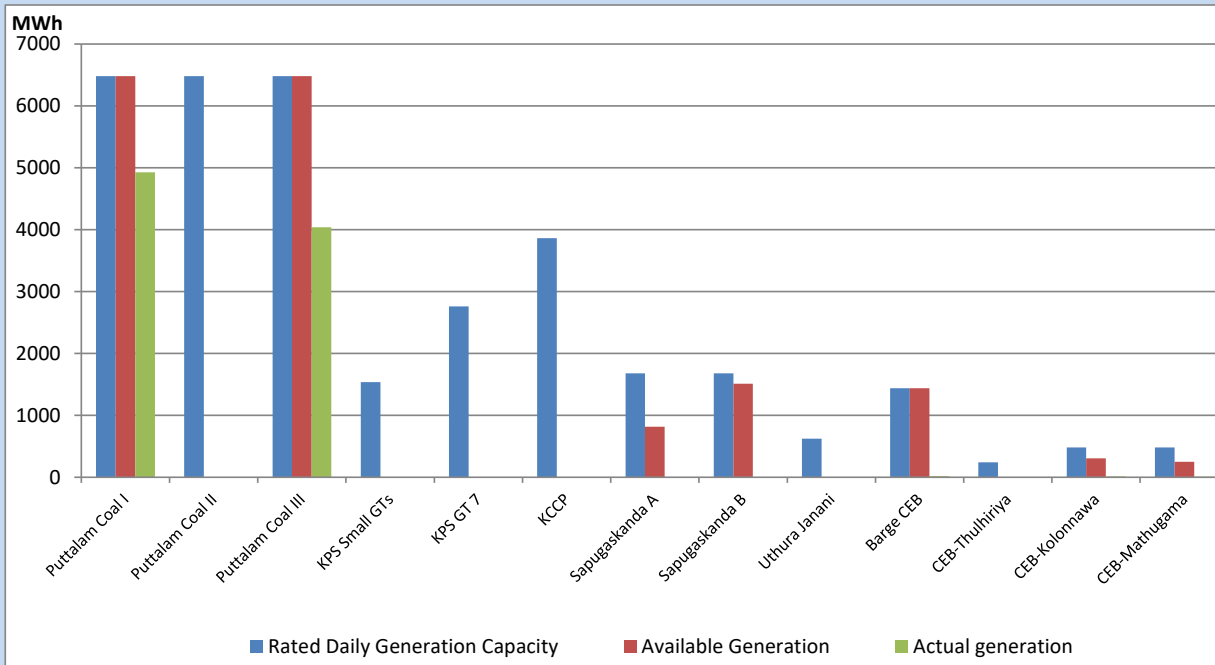
Category	Dispatch (GWh)	Percentage
CEB Hydro	221.17	53.98%
CEB Thermal Oil	1.65	0.40%
CEB Coal	111.33	27.17%
IPP Thermal	0.09	0.02%
SPP Wind	21.03	5.13%
CEB Wind	24.50	5.98%
SPP Solar	3.05	0.74%
SPP Solid Waste	2.53	0.62%
Mini Hydro	24.36	5.95%
<b>Total</b>	<b>409.71</b>	

### For Current Year

Category	Dispatch (GWh)	Percentage
CEB Hydro	3,354.9	32.59%
CEB Thermal Oil	1,114.0	10.82%
CEB Coal	3,824.4	37.15%
IPP Thermal	1,027.0	9.98%
SPP Wind	251.8	2.45%
CEB Wind	270.6	2.63%
SPP Solar	65.3	0.63%
SPP Solid Waste	51.7	0.50%
Mini Hydro	334.4	3.25%
<b>Total</b>	<b>10,293.8</b>	

## CEB owned Thermal Plant Dispatch

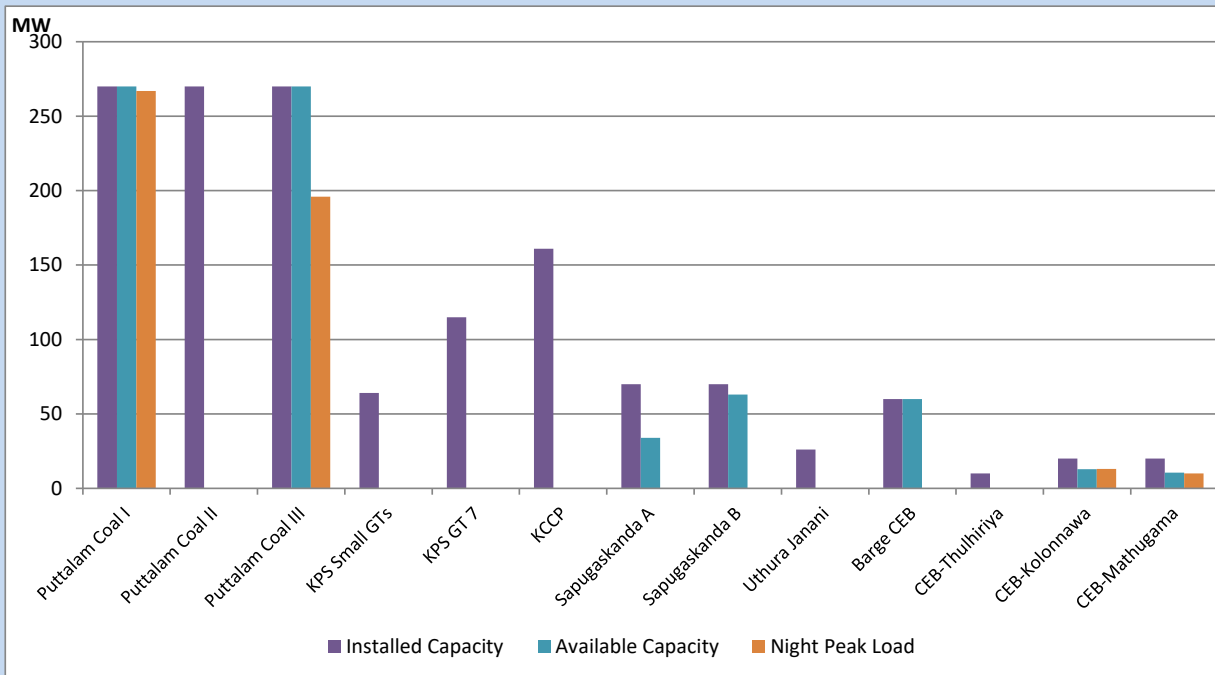
September 11, 2022



Available Generation is estimated based on plant availability at 6.00am on

September 12, 2022

## CEB owned Thermal Plant Loading at the Night Peak



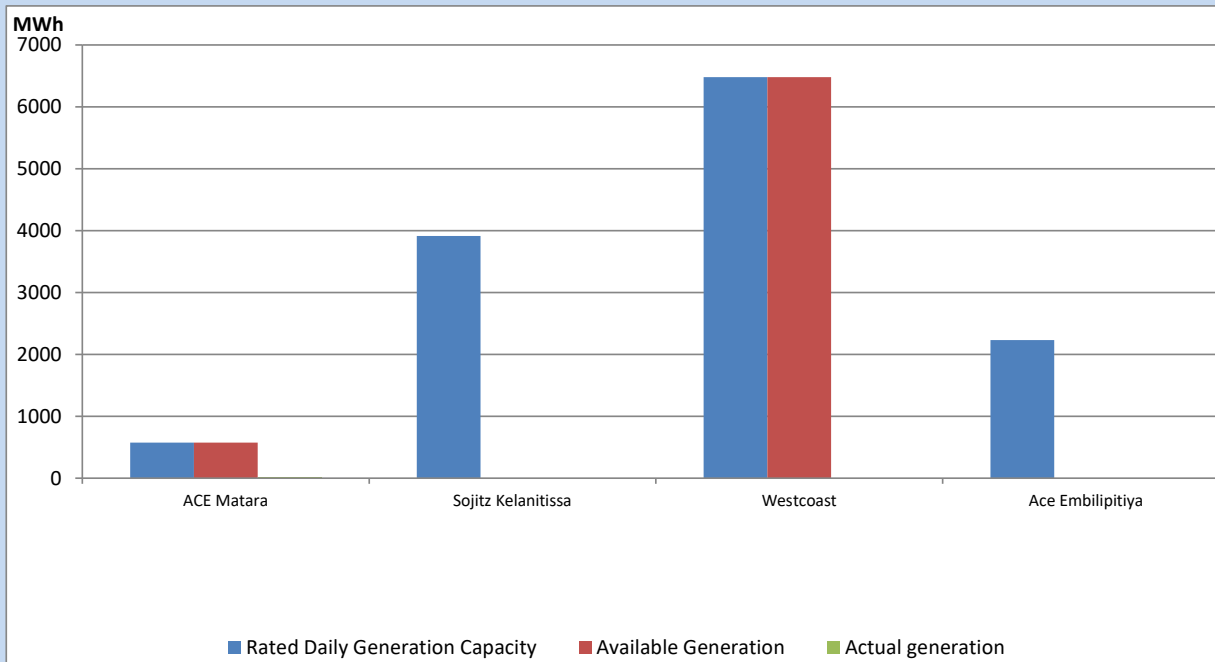
Note- Plant availability is recorded at 6.00 am on

September 12, 2022

## IPP owned Thermal Plant Dispatch

September 11, 2022

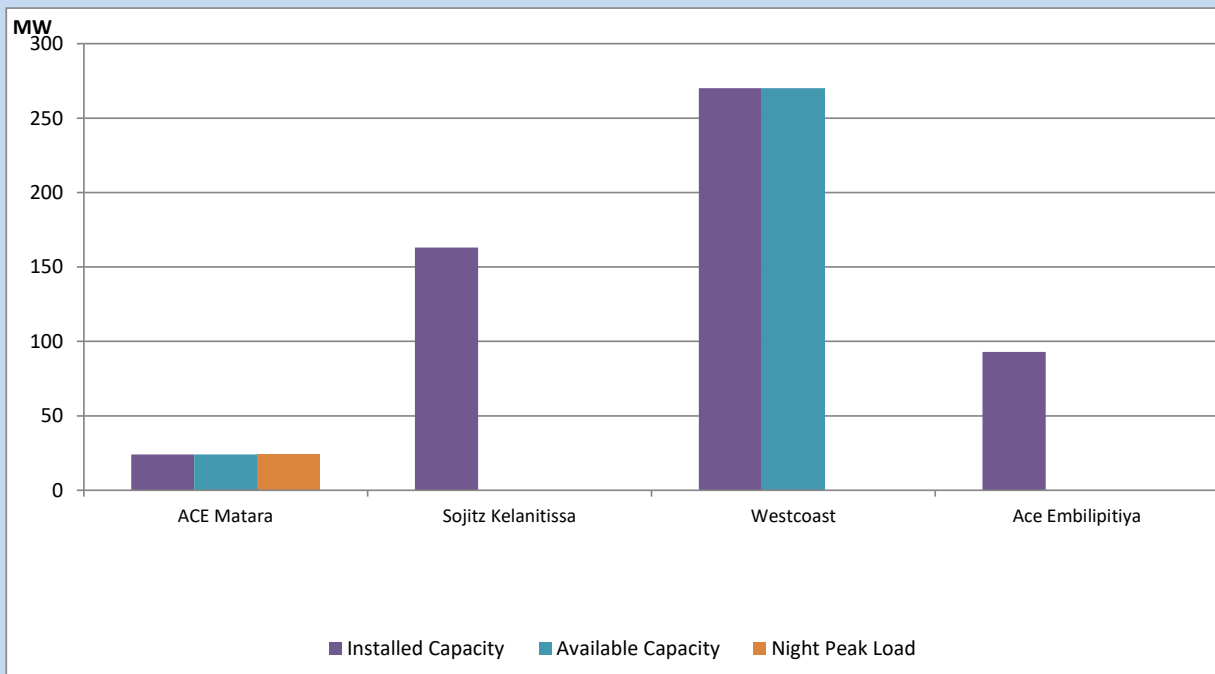
Asia Power, V Power Pallekale, Vpower Galle, V Power Horana, Vpower Hambantota, Vpower Valachchena and Altaqa Mahiyanganaya are not available due to expiration of PPAs



Available Generation is estimated based on plant availability at 6.00am on

September 12, 2022

## IPP owned Thermal Plant Loading at the Night Peak

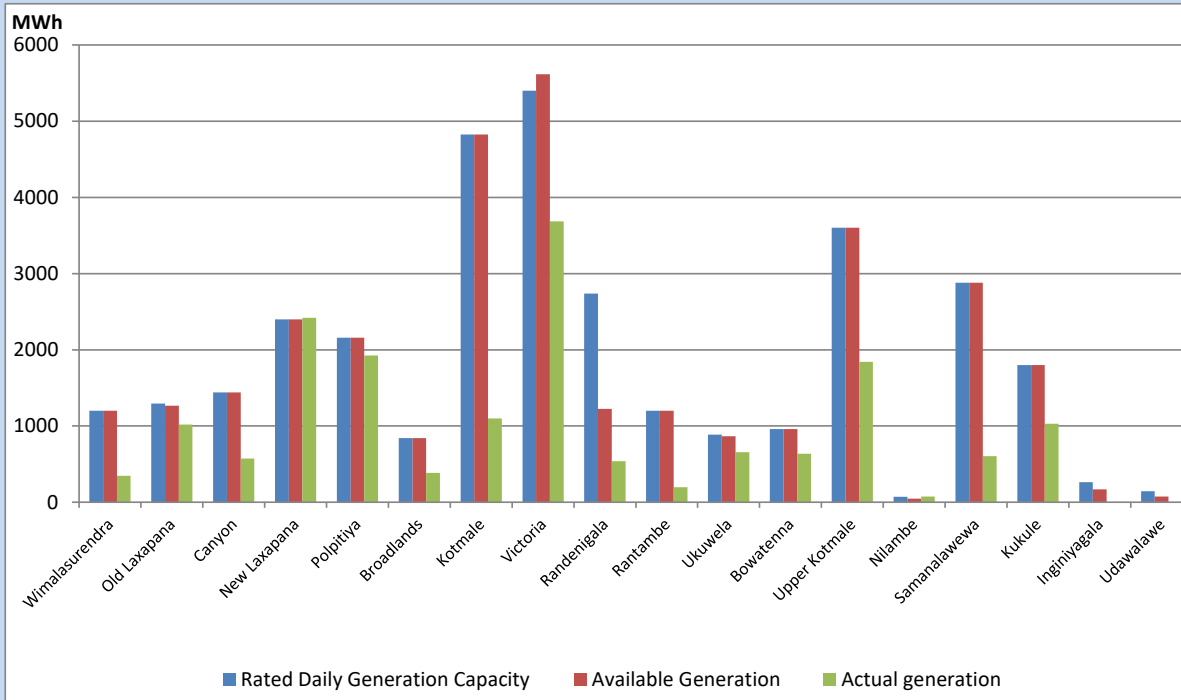


Note- Plant availability is recorded at 6.00 am on

September 12, 2022

## Major Hydro Plant Dispatch

September 11, 2022

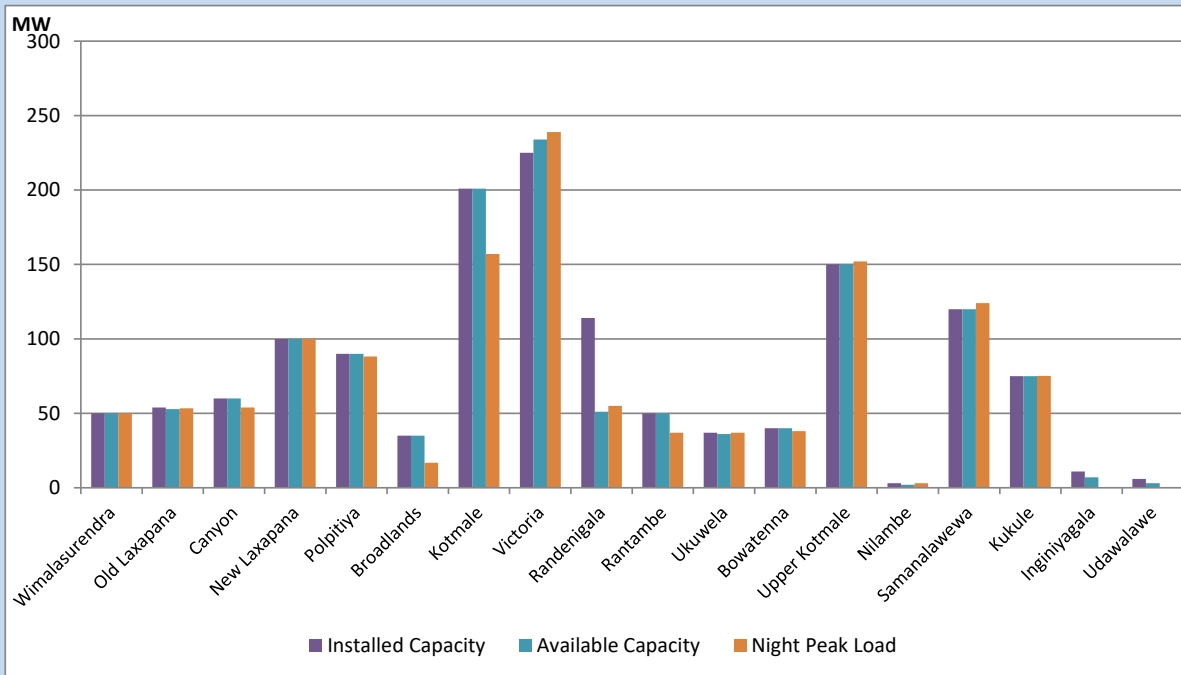


Available Generation is estimated based on plant availability at 6.00am on  
Broadlands power plant is operating in the Commissioning Stage

September 12, 2022

## Major Hydro Plant Loading at Night Peak

September 11, 2022



Note- Plant availability is recorded at 6.00 am on  
Broadlands power plant is operating in the Commissioning Stage

September 12, 2022

## Summary of Major Plant performance

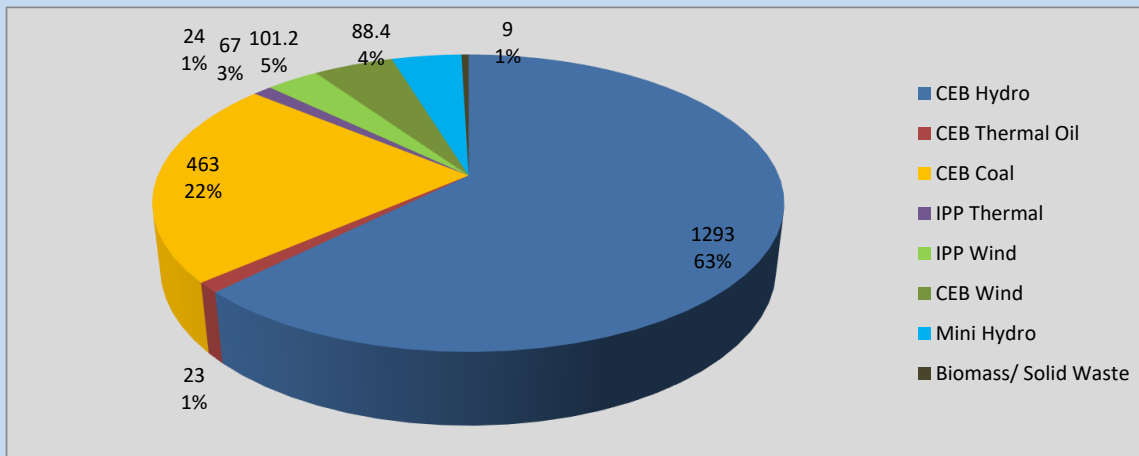
Plant	Installed Capacity	Plant Availability	Night peak Load	Plant Dispatch
	(MW)	(MW)	(MW)	(MWh)
Wimalasurendra	50	50	50	348
Old Laxapana	54	53	53	1,018
Canyon	60	60	54	574
New Laxapana	100	100	100	2,421
Polpitiya	90	90	88	1,926
Broadlands	35	35	17	384
Kotmale	201	201	157	1,100
Victoria	225	234	239	3,686
Randenigala	114	51	55	537
Rantambe	50	50	37	195
Ukuwela	37	36	37	655
Bowatenna	40	40	38	637
Upper Kotmale	150	150	152	1,842
Nilambe	3	2	3	74
Samanalawewa	120	120	124	605
Kukule	75	75	75	1,030
Inginiyagala	11	7	0	0
Udawalawe	6	3	0	0
Puttalam Coal I	270	270	267	4,926
Puttalam Coal II	270	0	0	0
Puttalam Coal III	270	270	196	4,038
KPS Small GTs	64	0	0	0
KPS GT 7	115	0	0	0
KCCP	161	0	0	0
Sapugaskanda A	70	34	0	0
Sapugaskanda B	70	63	0	0
Uthura Janani	26	0	0	0
Barge CEB	60	60	0	19
CEB-Thulhiriya	10	0	0	0
CEB-Kolonnawa	20	13	13	13
CEB-Mathugama	20	11	10	8
ACE Matara	24	24	24	18
Sojitz Kelanitissa	163	0	0	0
West Coast	270	270	0	0
ACE Embilipitiya	93	0	0	0
<b>Total</b>	<b>3,397</b>	<b>2,371</b>	<b>2,055</b>	<b>33,784</b>

Plant availability is the availability recorded at 6 am on

September 12, 2022

## Contribution to the Night Peak in MW

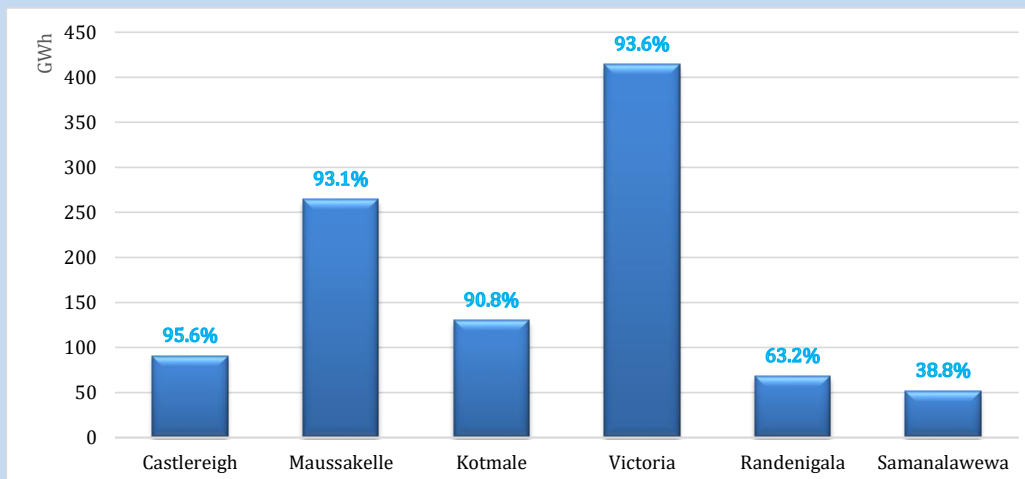
September 11, 2022



Night Peak*	2,069.0 MW
Day Peak	1,303.7 MW
Minimum Demand	1,064.1 MW

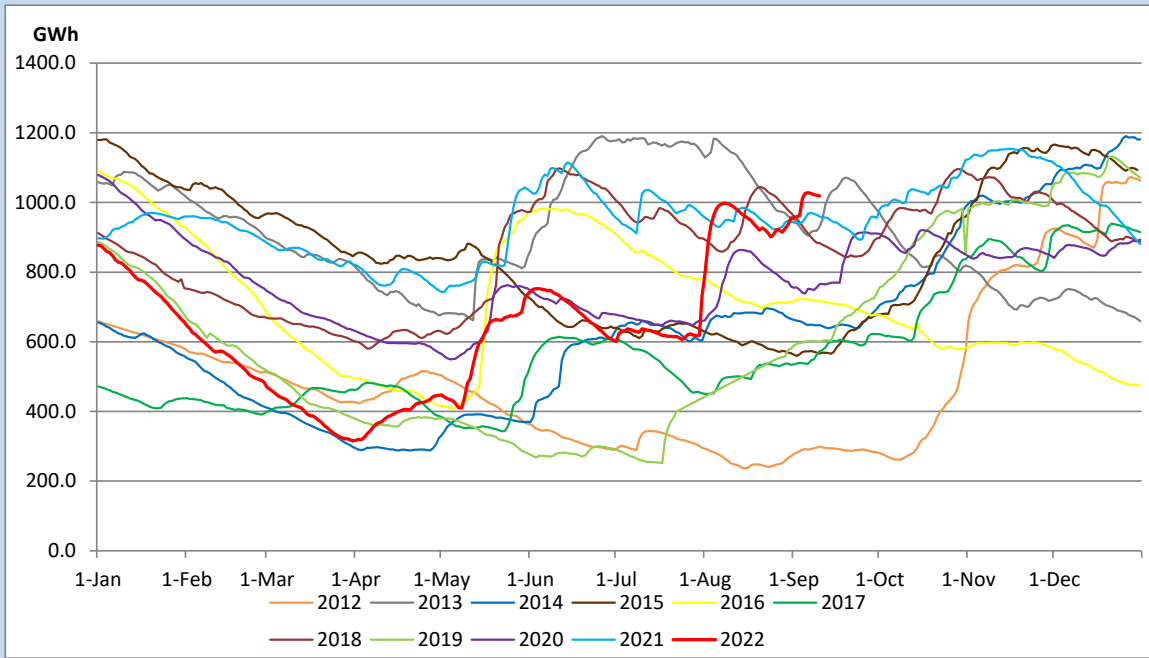
Above figures are excluding contribution from Roof Top Solar, 1MW solar, certain Wind plants and Mini Hydro plants

## Reservoir Levels - as at 06.00 Hr on September 12, 2022

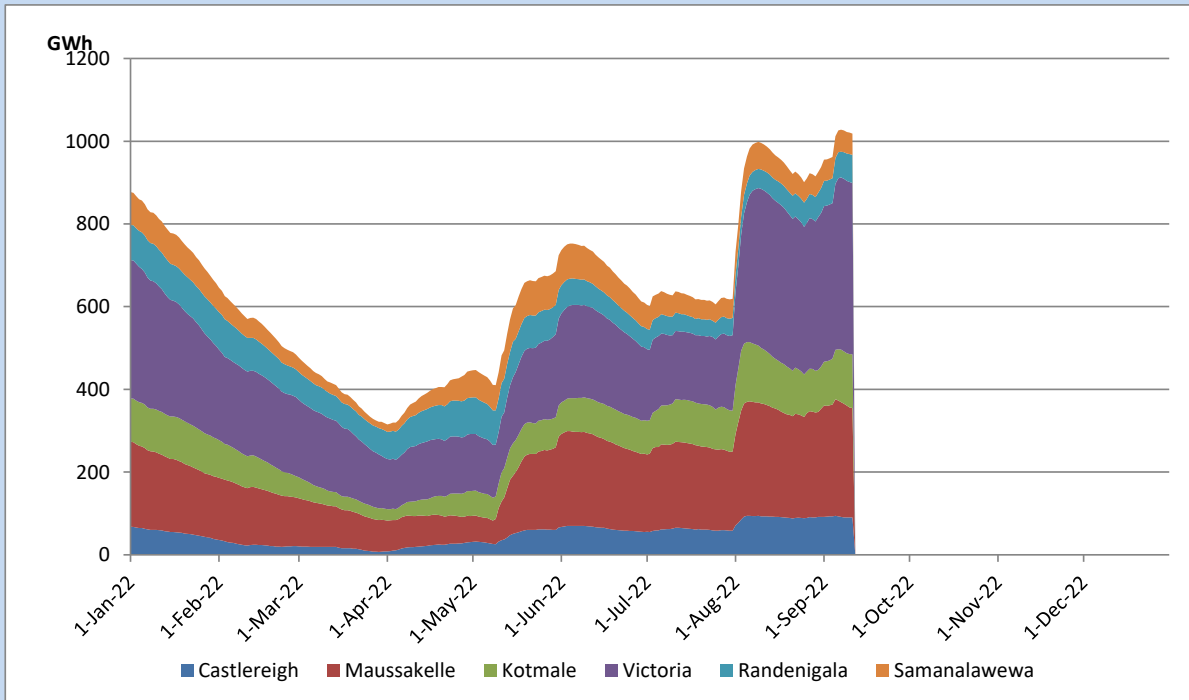


Total Reservoir Level	1018.6 GWh
% of Total capacity	84.5%

## Comparison of Total Reservoir Storage Levels with Past Years

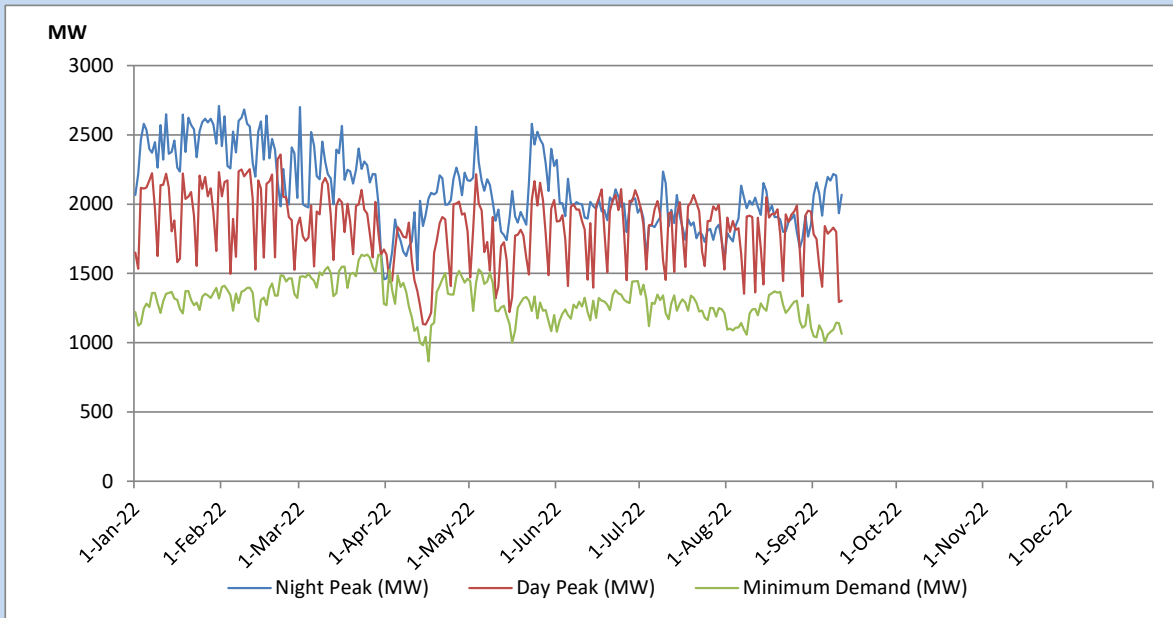


## Variation of Major Hydro Reservoir Levels in the current year (GWh)





## Variation of Demand during the current year

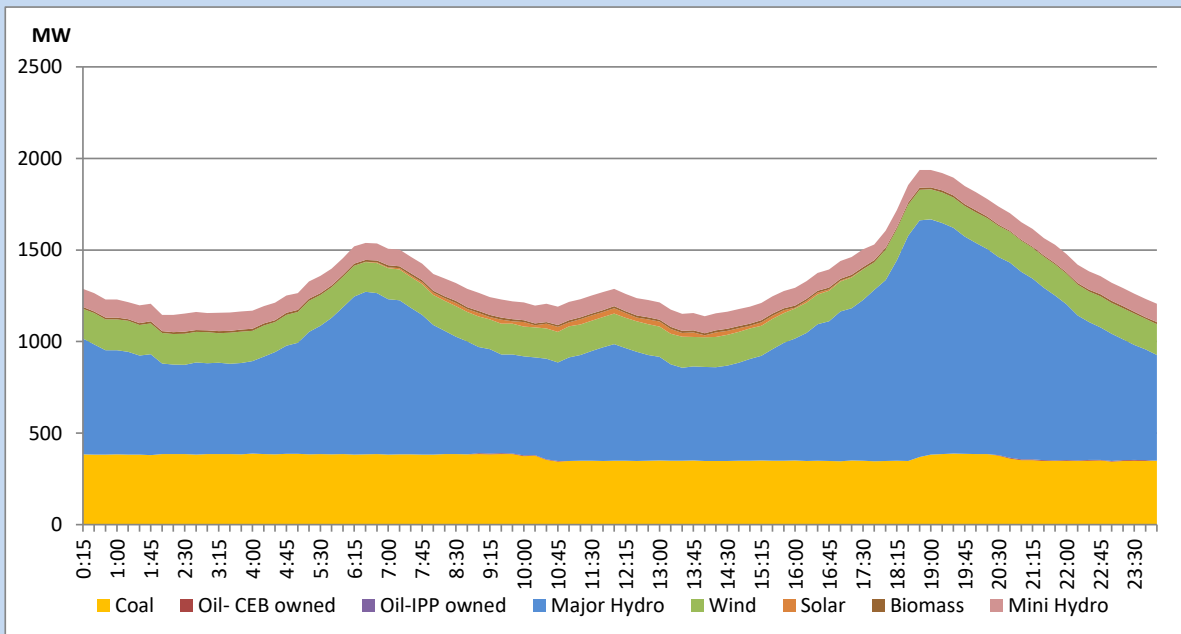


The above figures are excluding contribution from Roof Top Solar, 1MW solar, certain Wind plants and Mini Hydro plants

## Daily Load Curve of the Previous day

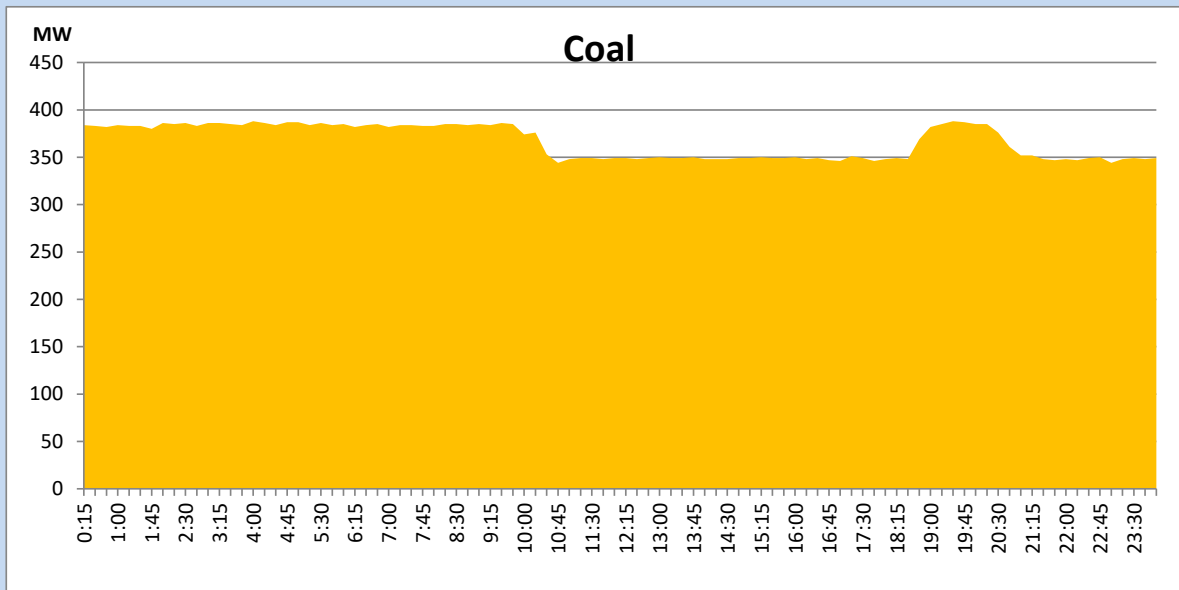
September 10, 2022

Solar and wind data is based on Telemetered Power Stations only



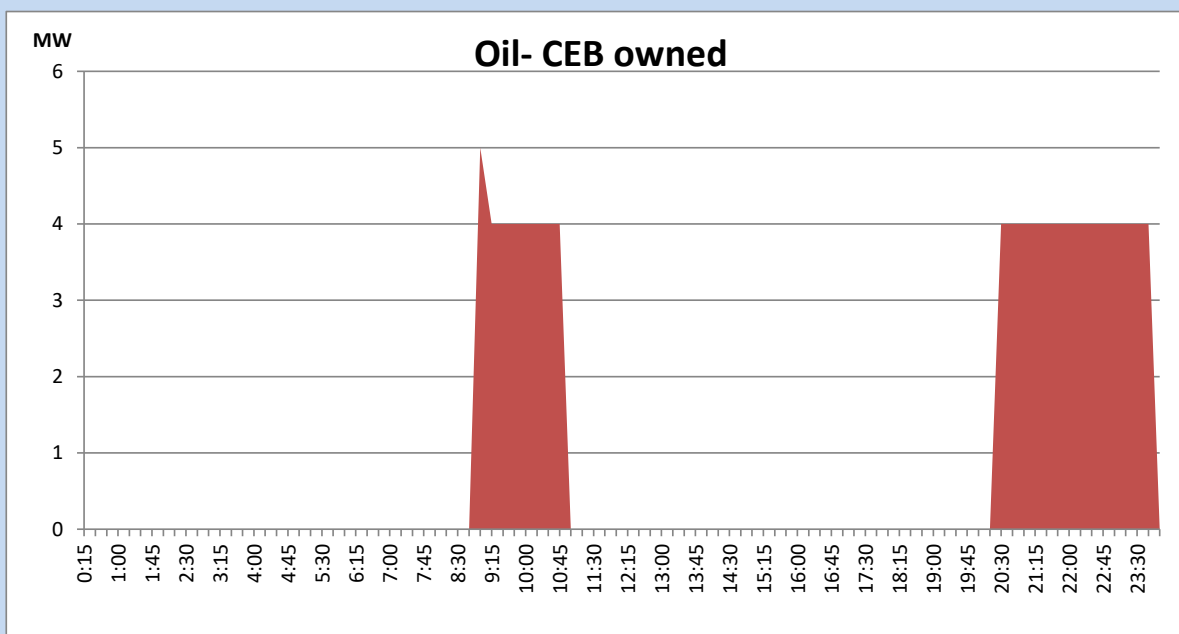
## Coal Generation during the Previous day

September 10, 2022



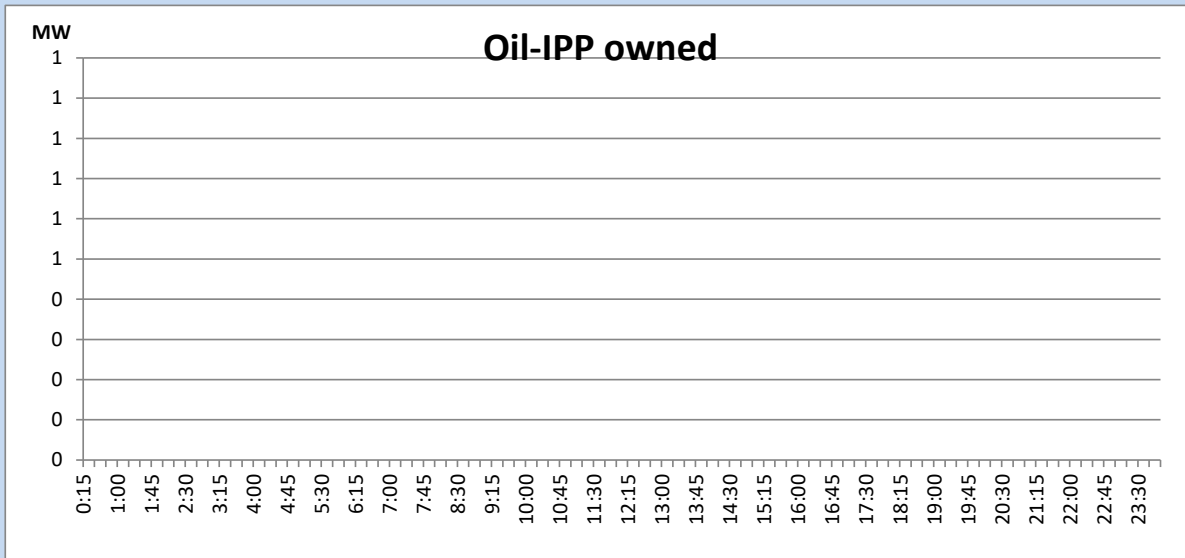
## CEB Oil Plant Generation during the Previous day

September 10, 2022



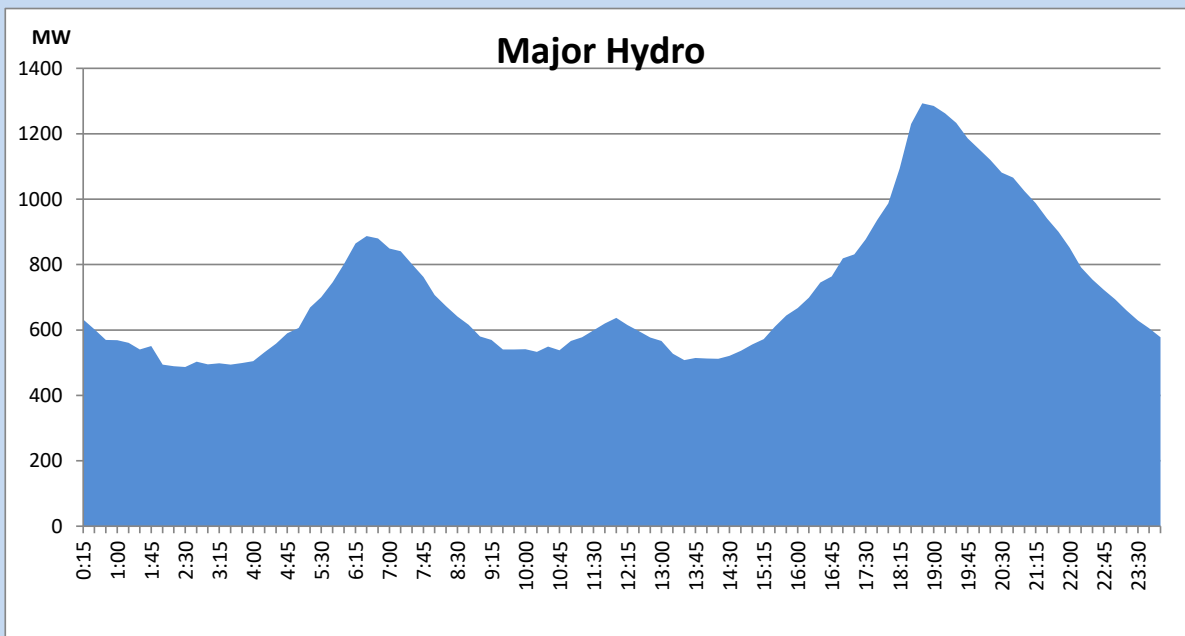
## IPP Oil Plant Generation during the Previous day

September 10, 2022



## Major Hydro Generation during the Previous day

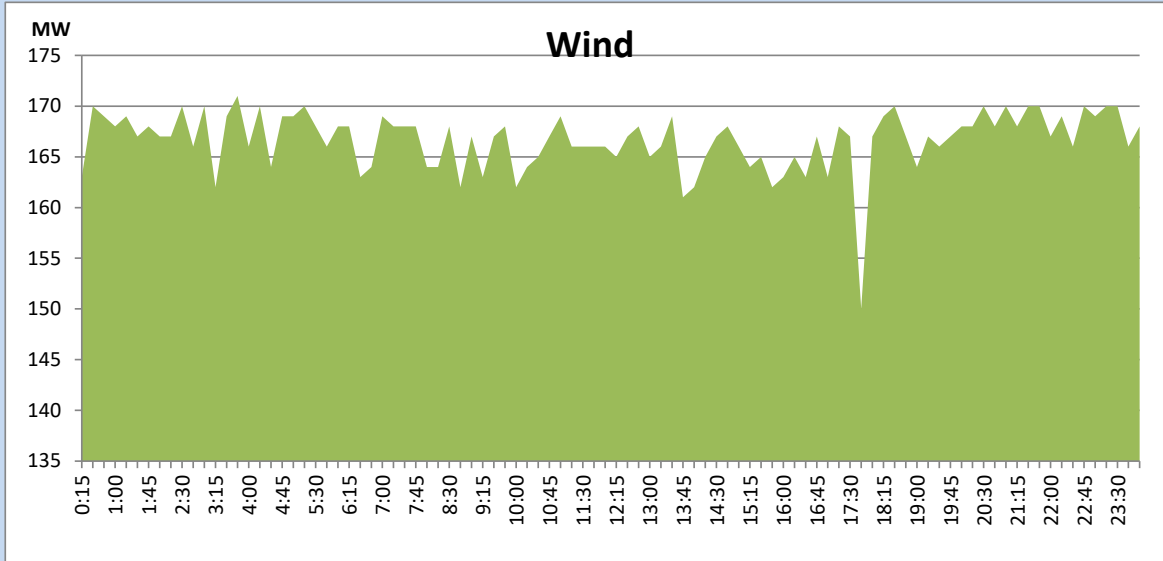
September 10, 2022



## Wind Generation during the Previous day

September 10, 2022

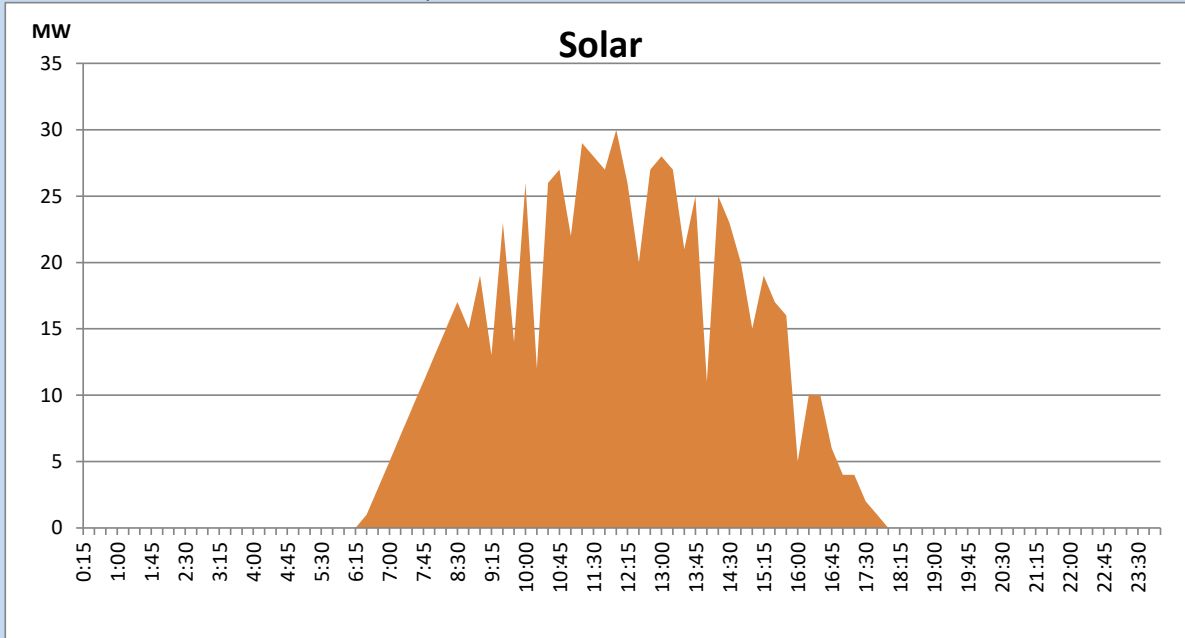
Based on Telemetered Power Stations only



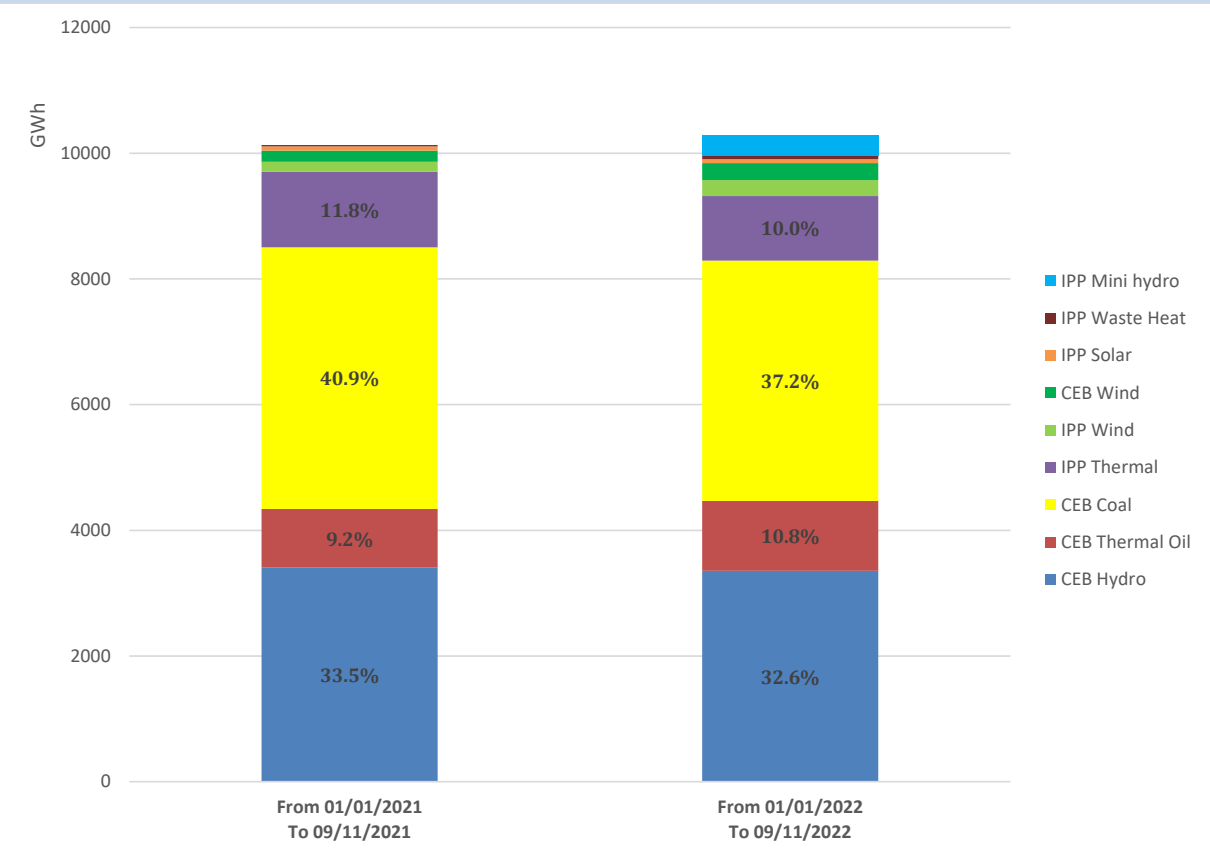
## Solar Generation during the Previous day

September 10, 2022

Based on Telemetered Power Stations only



# Cumulative Dispatch Comparison with Last Year



## Thermal Plant Fuel types

Power Station	Primary Fuel
CEB Thermal	
Sapugaskanda 1	Heavy Fuel
Sapugaskanda 2	Heavy Fuel
Kelanitissa Small Gas Turbines	Auto Diesel
GT 7 - Kelanitissa	Auto Diesel
Kelanitissa CCY	Naphtha or Diesel
Lakvijaya 1	Coal
Lakvijaya 2	Coal
Lakvijaya 3	Coal
Uthuru Janani	Heavy Fuel
Barge CEB	Heavy Fuel

Power Station	Primary Fuel
Private Thermal	
Sojitz - Kelanitissa	Auto Diesel
West Coast	Auto Diesel / Heavy Fuel
ACE Matara	Heavy Fuel
ACE Embilipitiya	Heavy Fuel

## Major Incidents during the day -as reported by CEB morning of

September 12, 2022

1) Puttalam GSS 132/33kV T/F 01 ,132/33kV T/F 03 and 33kV B/S tripped along with Feeder 01 at 10:19 hrs due to the operation of O/C and E/F protection. The both T/Fs, 33kV B/S and all affected feeders were normalized by 11:14 hrs.