

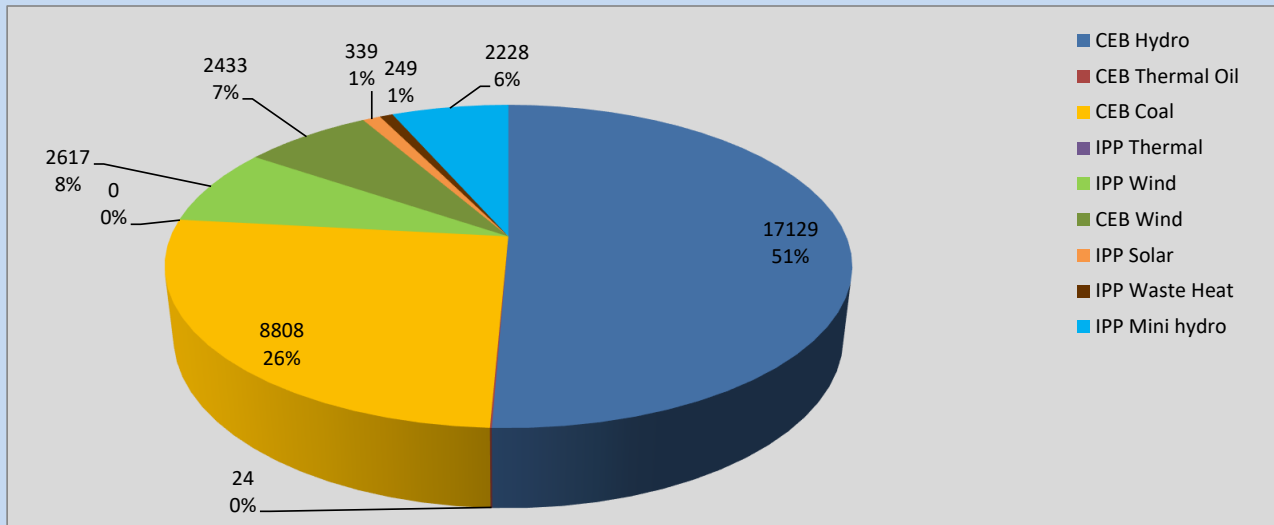
# Generation and Reservoirs Statistics

September 10, 2022



PUBLIC UTILITIES COMMISSION OF SRI LANKA

## Daily Generation Mix in MWh



**Total Generation** **33,827 MWh**

Note: Above data is excluding contribution from Roof Top Solar, 1MW Solar and certain Mini Hydro plants

## Cumulative Dispatch

Note: Following data is Excluding contribution from Roof Top Solar, 1MW solar and Mini Hydro plants

### For Current Month

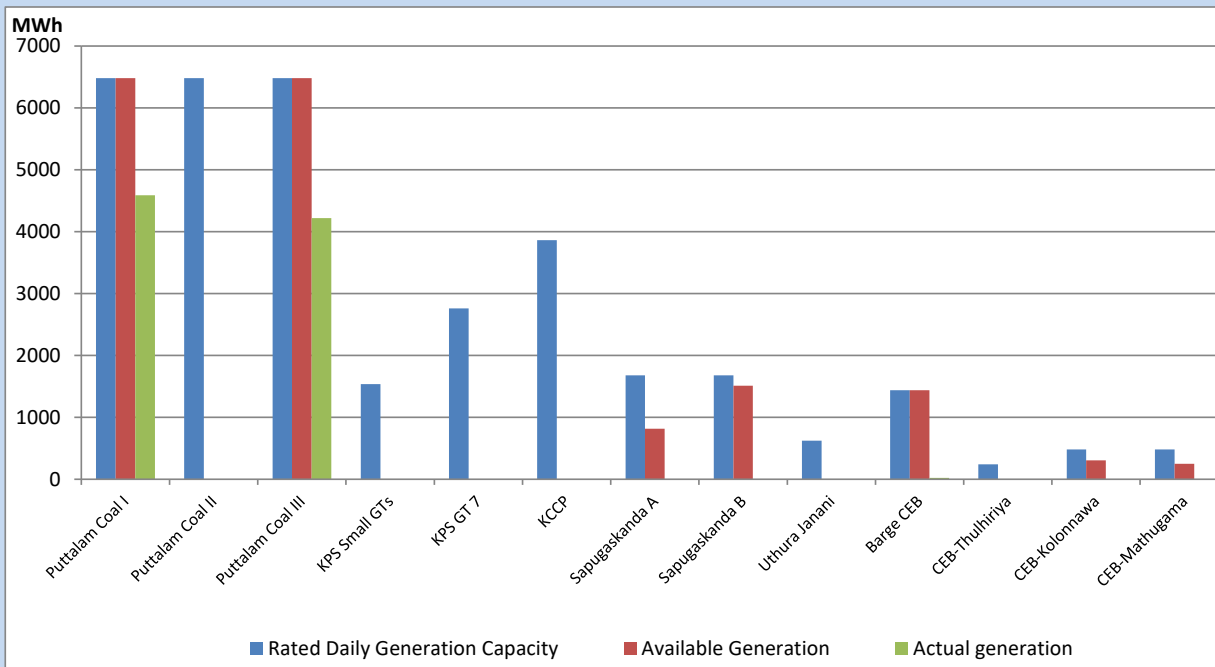
Category	Dispatch (GWh)	Percentage
CEB Hydro	204.14	54.30%
CEB Thermal Oil	1.61	0.43%
CEB Coal	102.37	27.23%
IPP Thermal	0.07	0.02%
SPP Wind	18.44	4.91%
CEB Wind	22.09	5.88%
SPP Solar	2.72	0.72%
SPP Solid Waste	2.28	0.61%
Mini Hydro	22.20	5.91%
<b>Total</b>	<b>375.92</b>	

### For Current Year

Category	Dispatch (GWh)	Percentage
CEB Hydro	3,337.8	32.53%
CEB Thermal Oil	1,114.0	10.86%
CEB Coal	3,815.5	37.19%
IPP Thermal	1,027.0	10.01%
SPP Wind	249.3	2.43%
CEB Wind	268.2	2.61%
SPP Solar	65.0	0.63%
SPP Solid Waste	51.4	0.50%
Mini Hydro	332.2	3.24%
<b>Total</b>	<b>10,260.0</b>	

## CEB owned Thermal Plant Dispatch

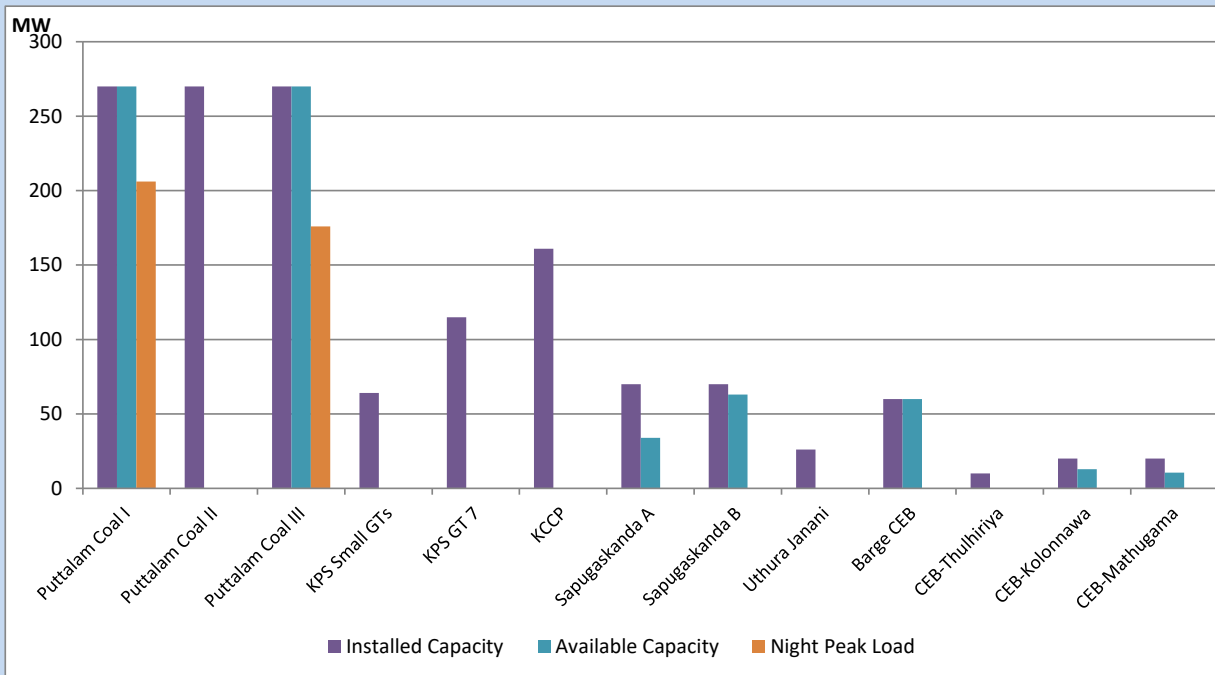
September 10, 2022



Available Generation is estimated based on plant availability at 6.00am on

September 11, 2022

## CEB owned Thermal Plant Loading at the Night Peak



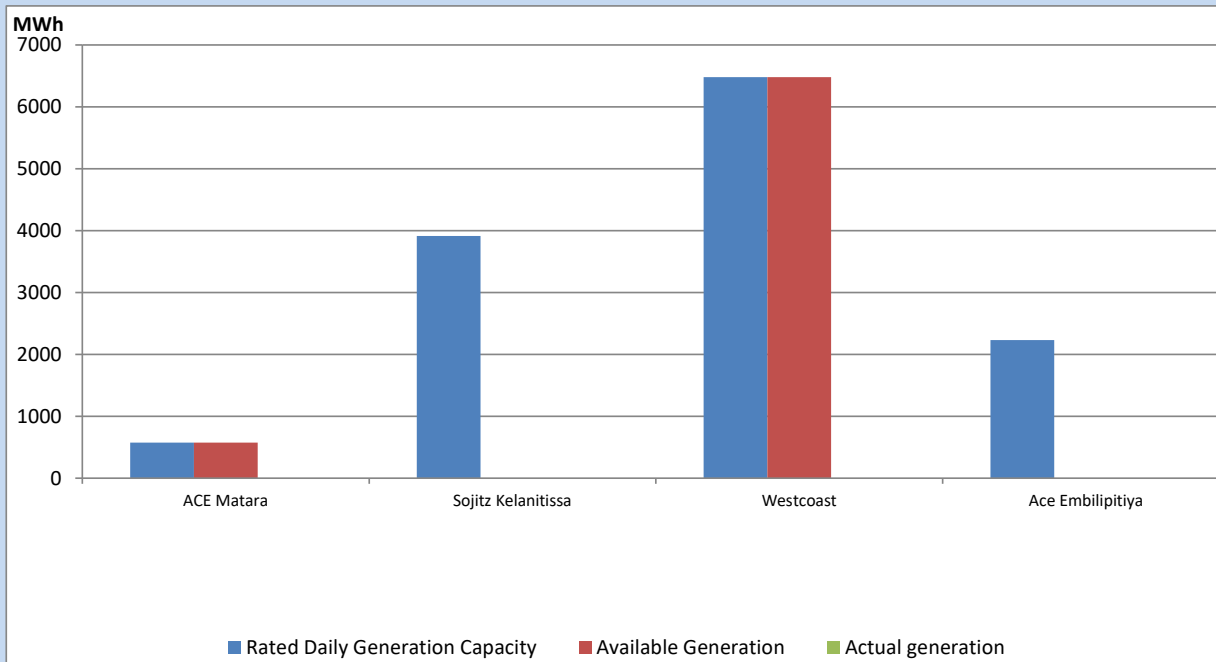
Note- Plant availability is recorded at 6.00 am on

September 11, 2022

## IPP owned Thermal Plant Dispatch

September 10, 2022

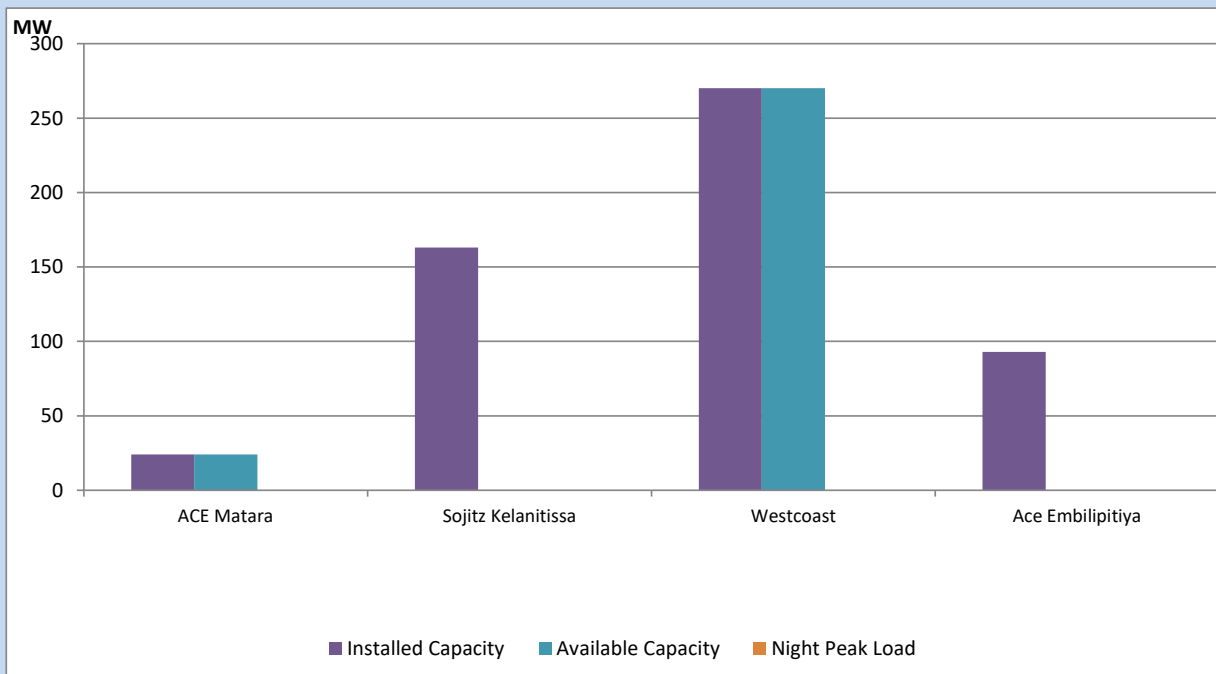
Asia Power, V Power Pallekale, Vpower Galle, V Power Horana, Vpower Hambantota, Vpower Valachchena and Altaqa Mahiyanganaya are not available due to expiration of PPAs



Available Generation is estimated based on plant availability at 6.00am on

September 11, 2022

## IPP owned Thermal Plant Loading at the Night Peak

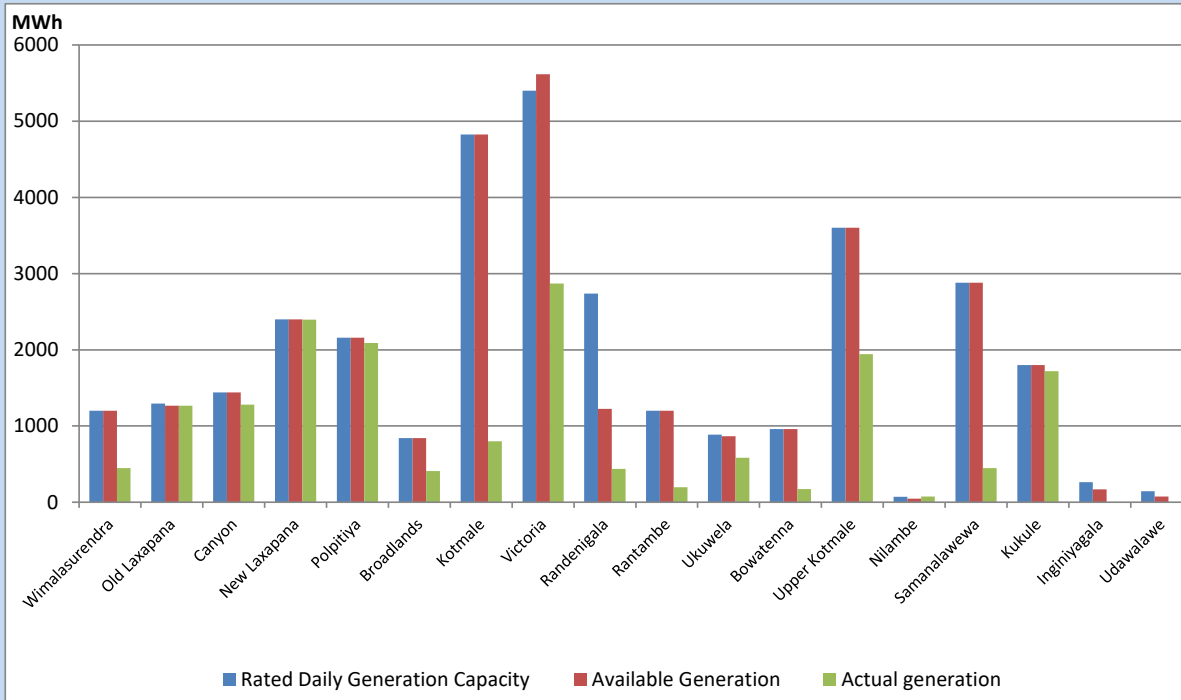


Note- Plant availability is recorded at 6.00 am on

September 11, 2022

## Major Hydro Plant Dispatch

September 10, 2022

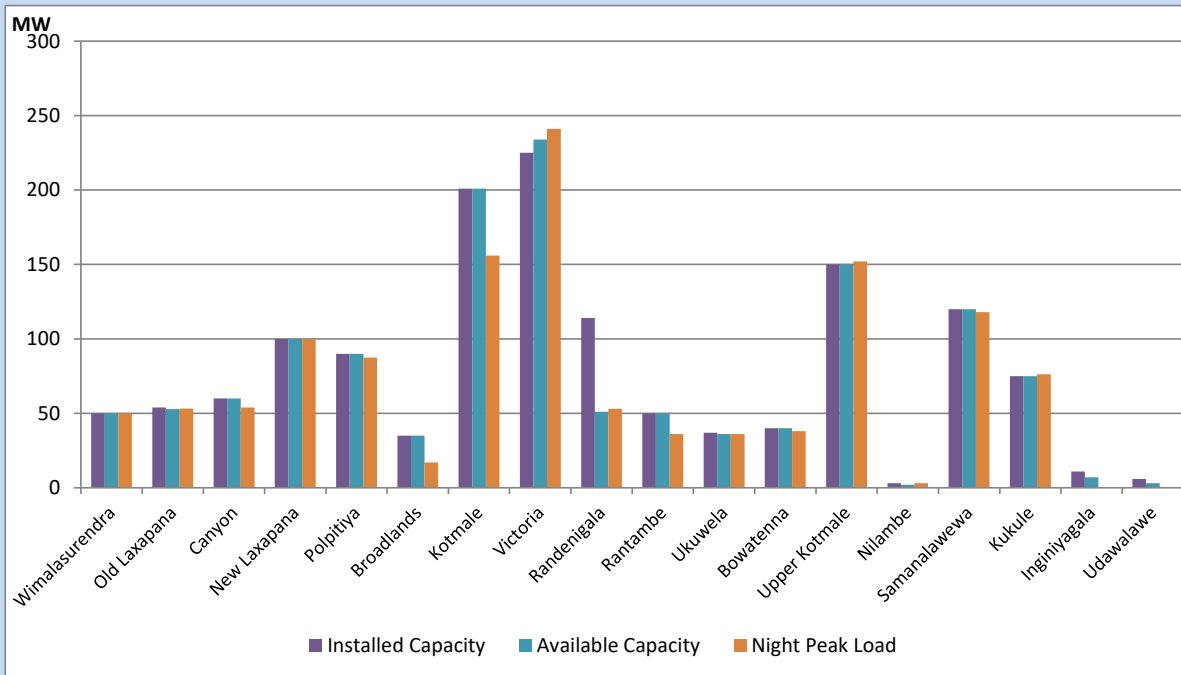


Available Generation is estimated based on plant availability at 6.00am on  
Broadlands power plant is operating in the Commissioning Stage

September 11, 2022

## Major Hydro Plant Loading at Night Peak

September 10, 2022



Note- Plant availability is recorded at 6.00 am on  
Broadlands power plant is operating in the Commissioning Stage

September 11, 2022

## Summary of Major Plant performance

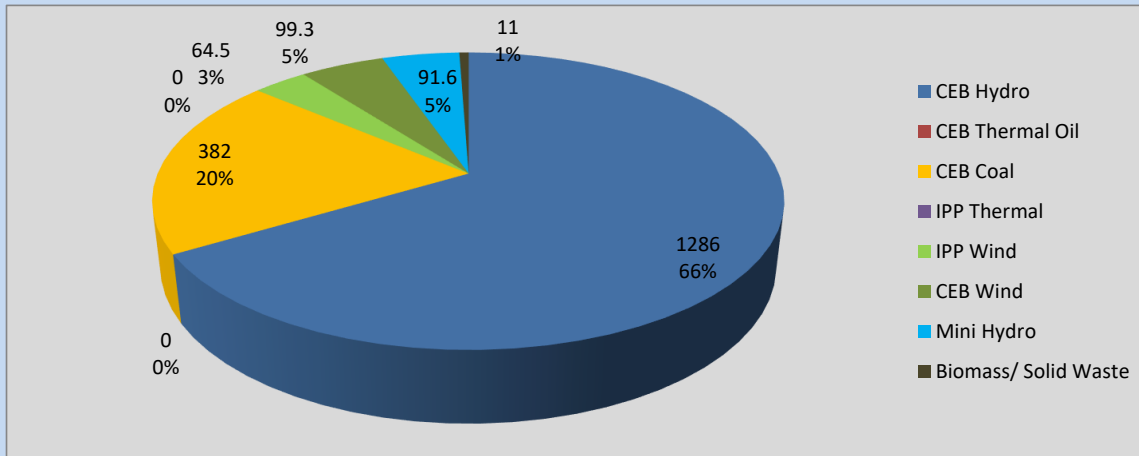
Plant	Installed Capacity	Plant Availability	Night peak Load	Plant Dispatch
	(MW)	(MW)	(MW)	(MWh)
Wimalasurendra	50	50	50	447
Old Laxapana	54	53	53	1,265
Canyon	60	60	54	1,280
New Laxapana	100	100	100	2,396
Polpitiya	90	90	87	2,089
Broadlands	35	35	17	408
Kotmale	201	201	156	800
Victoria	225	234	241	2,870
Randenigala	114	51	53	438
Rantambe	50	50	36	196
Ukuwela	37	36	36	584
Bowatenna	40	40	38	171
Upper Kotmale	150	150	152	1,943
Nilambe	3	2	3	75
Samanalawewa	120	120	118	447
Kukule	75	75	76	1,720
Inginiyagala	11	7	0	0
Udawalawe	6	3	0	0
Puttalam Coal I	270	270	206	4,589
Puttalam Coal II	270	0	0	0
Puttalam Coal III	270	270	176	4,219
KPS Small GTs	64	0	0	0
KPS GT 7	115	0	0	0
KCCP	161	0	0	0
Sapugaskanda A	70	34	0	0
Sapugaskanda B	70	63	0	0
Uthura Janani	26	0	0	0
Barge CEB	60	60	0	24
CEB-Thulhiriya	10	0	0	0
CEB-Kolonnawa	20	13	0	0
CEB-Mathugama	20	11	0	0
ACE Matara	24	24	0	0
Sojitz Kelanitissa	163	0	0	0
West Coast	270	270	0	0
ACE Embilipitiya	93	0	0	0
<b>Total</b>	<b>3,397</b>	<b>2,371</b>	<b>1,919</b>	<b>33,827</b>

Plant availability is the availability recorded at 6 am on

September 11, 2022

## Contribution to the Night Peak in MW

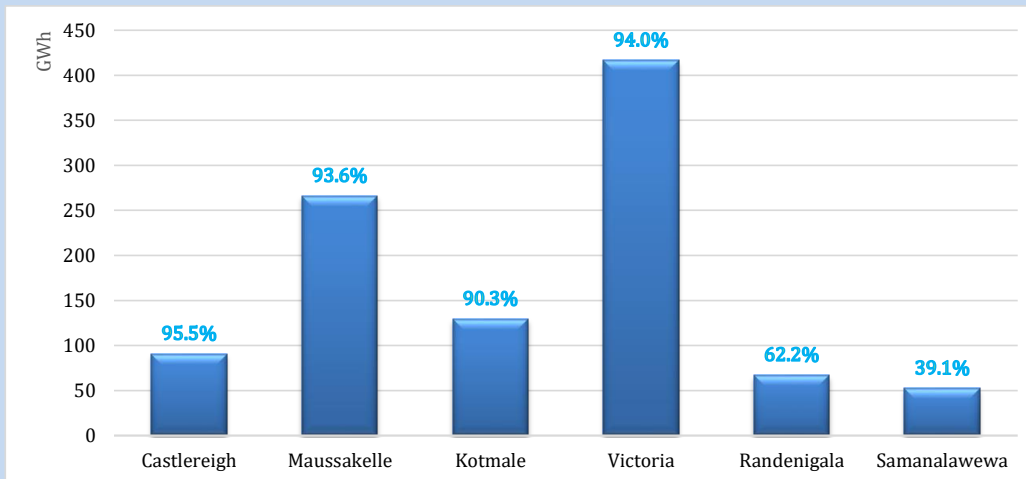
September 10, 2022



Night Peak*	1,934.2 MW
Day Peak	1,293.8 MW
Minimum Demand	1,141.9 MW

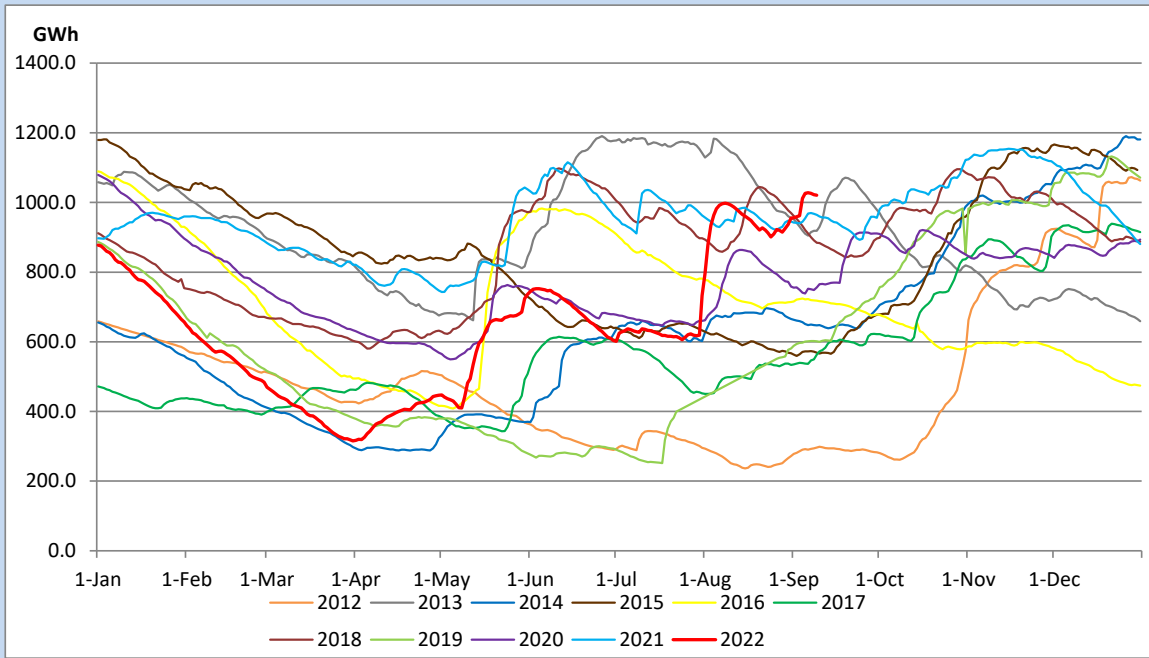
Above figures are excluding contribution from Roof Top Solar, 1MW solar, certain Wind plants and Mini Hydro plants

## Reservoir Levels - as at 06.00 Hr on September 11, 2022

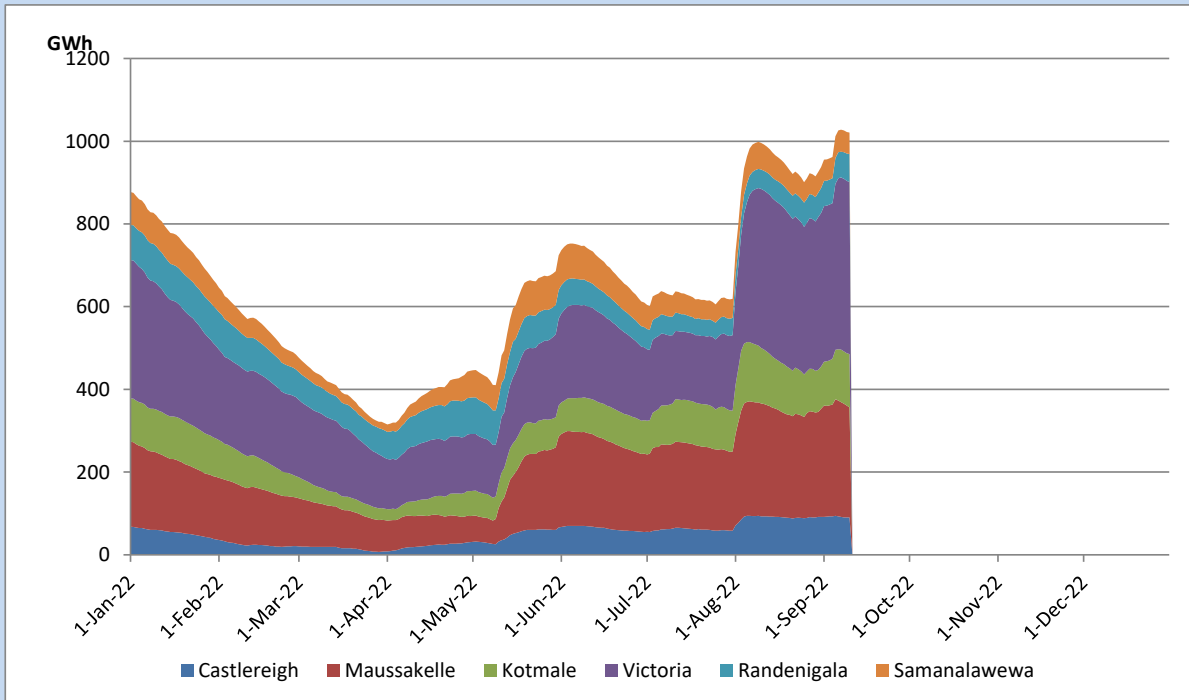


Total Reservoir Level	1020.8 GWh
% of Total capacity	84.7%

## Comparison of Total Reservoir Storage Levels with Past Years

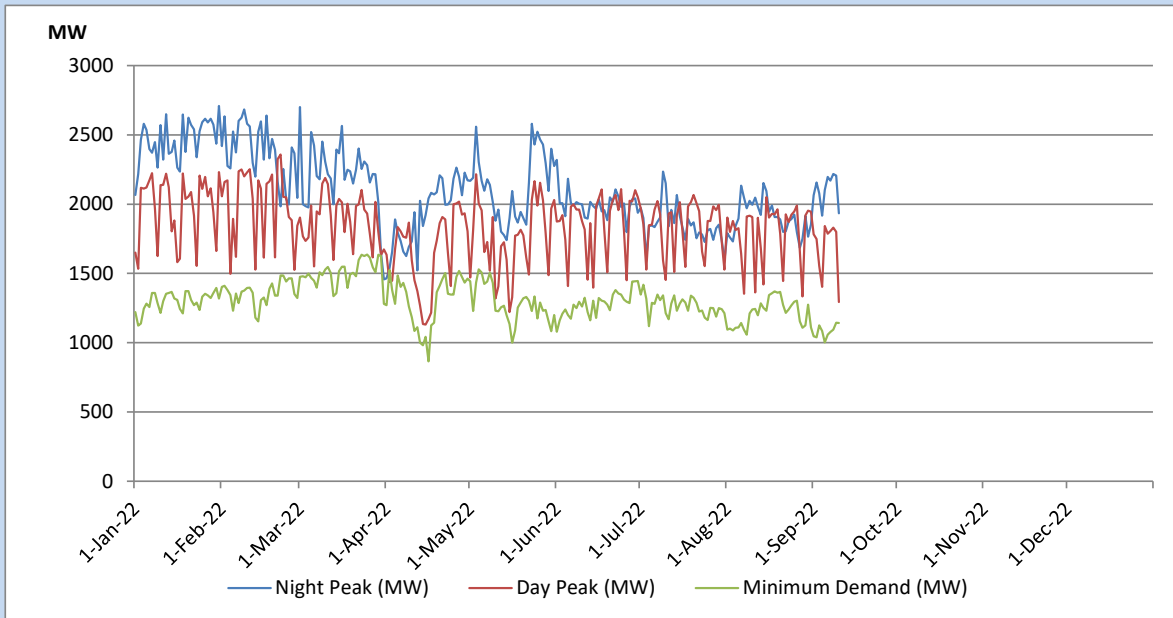


## Variation of Major Hydro Reservoir Levels in the current year (GWh)





## Variation of Demand during the current year

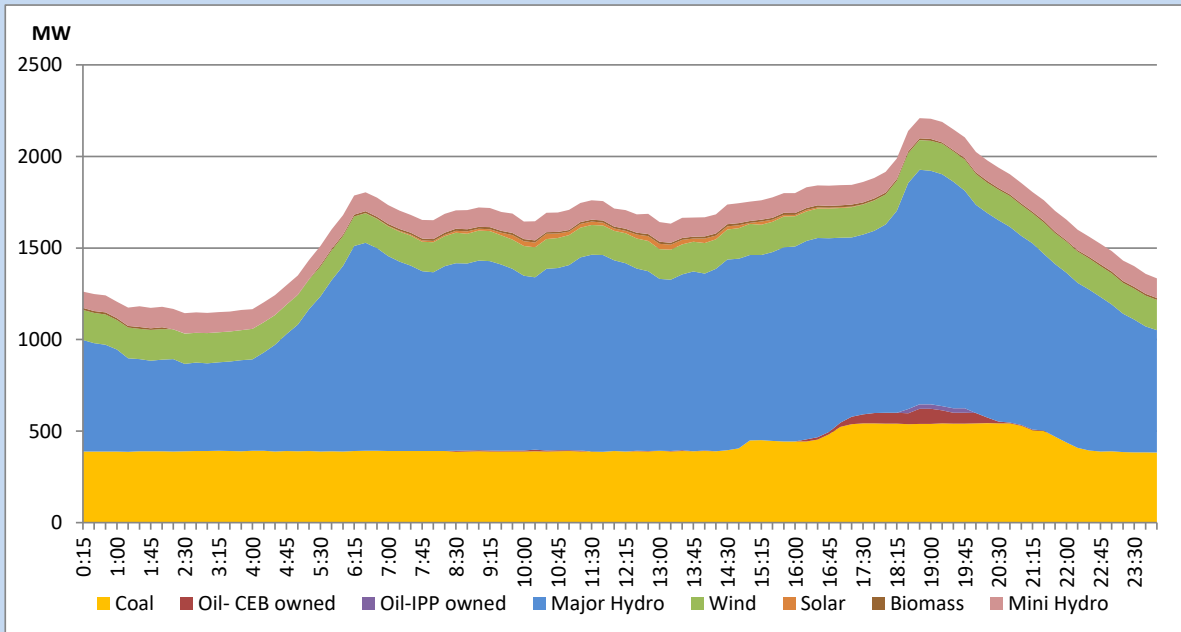


The above figures are excluding contribution from Roof Top Solar, 1MW solar, certain Wind plants and Mini Hydro plants

## Daily Load Curve of the Previous day

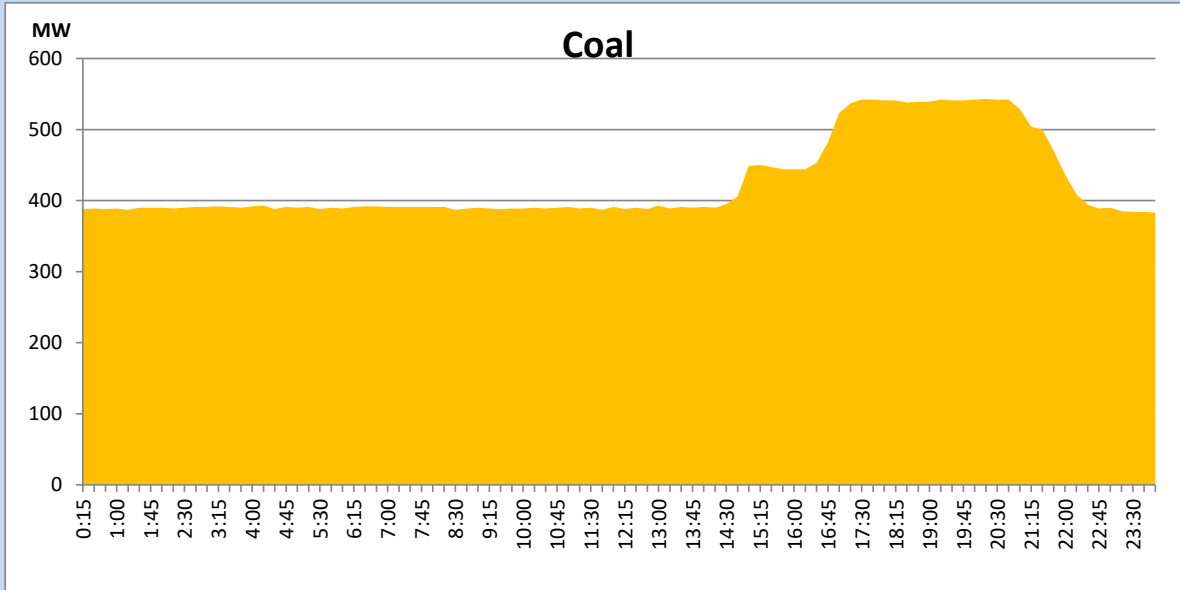
September 9, 2022

Solar and wind data is based on Telemetered Power Stations only



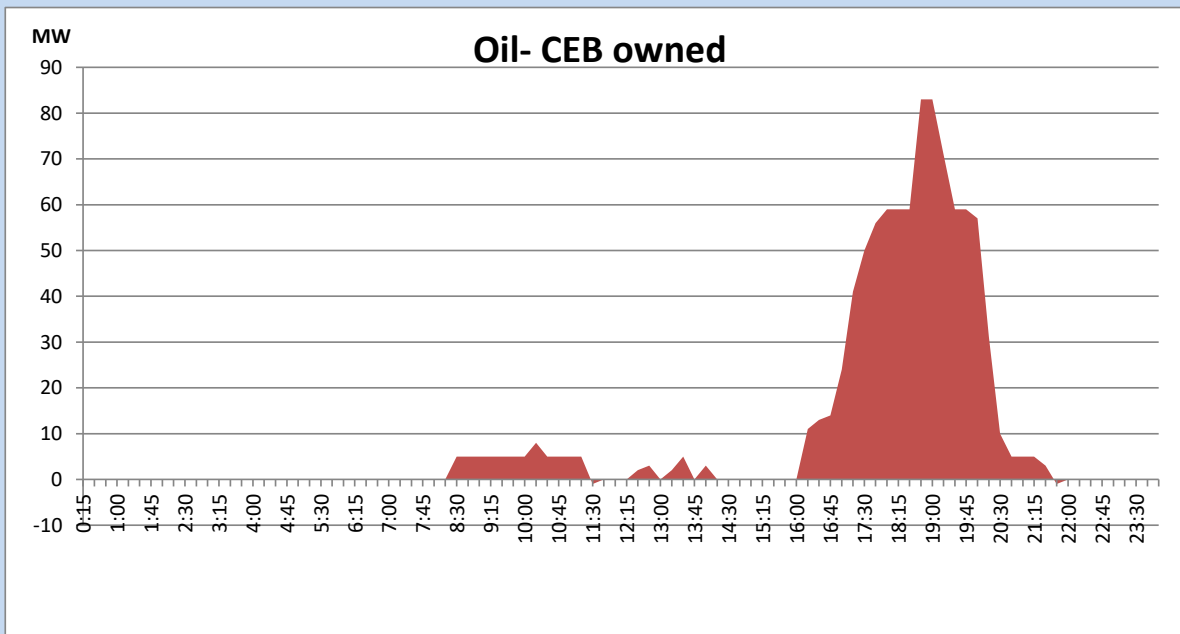
## Coal Generation during the Previous day

September 9, 2022



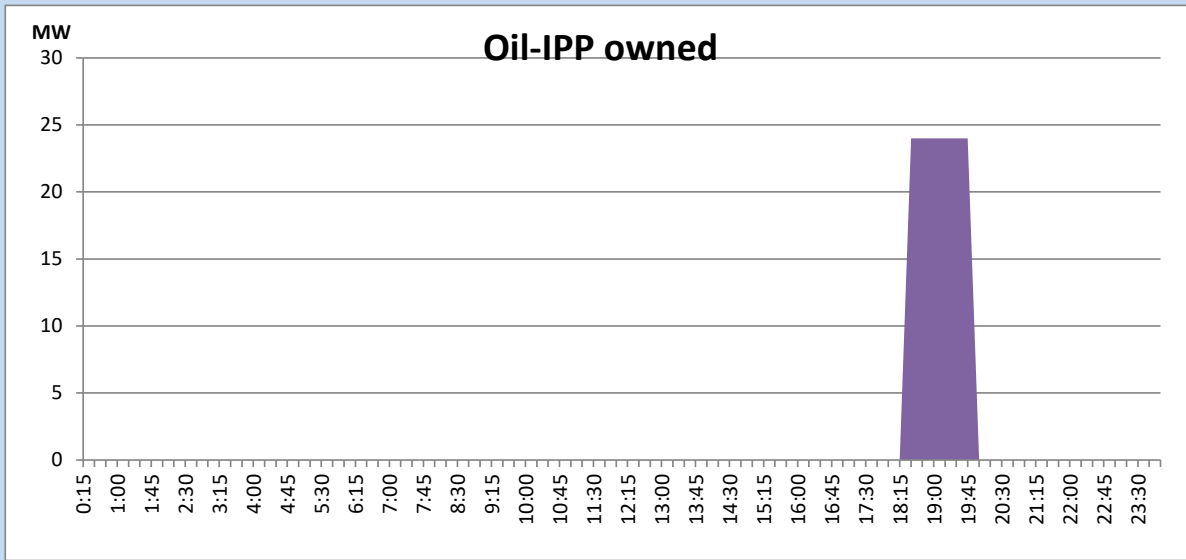
## CEB Oil Plant Generation during the Previous day

September 9, 2022



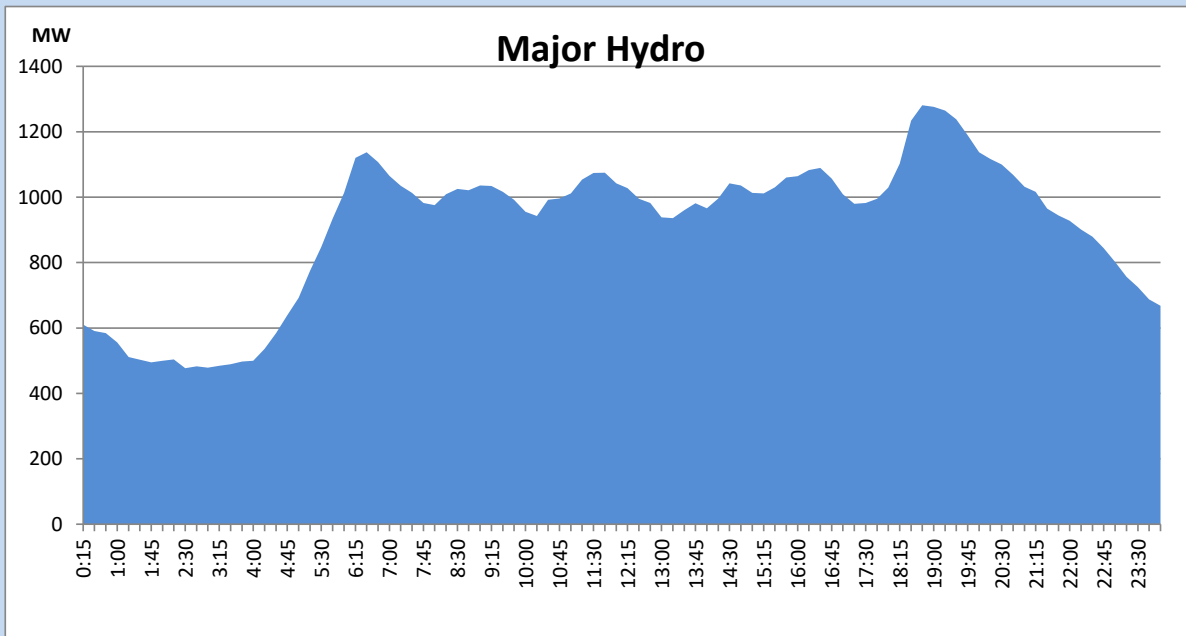
## IPP Oil Plant Generation during the Previous day

September 9, 2022



## Major Hydro Generation during the Previous day

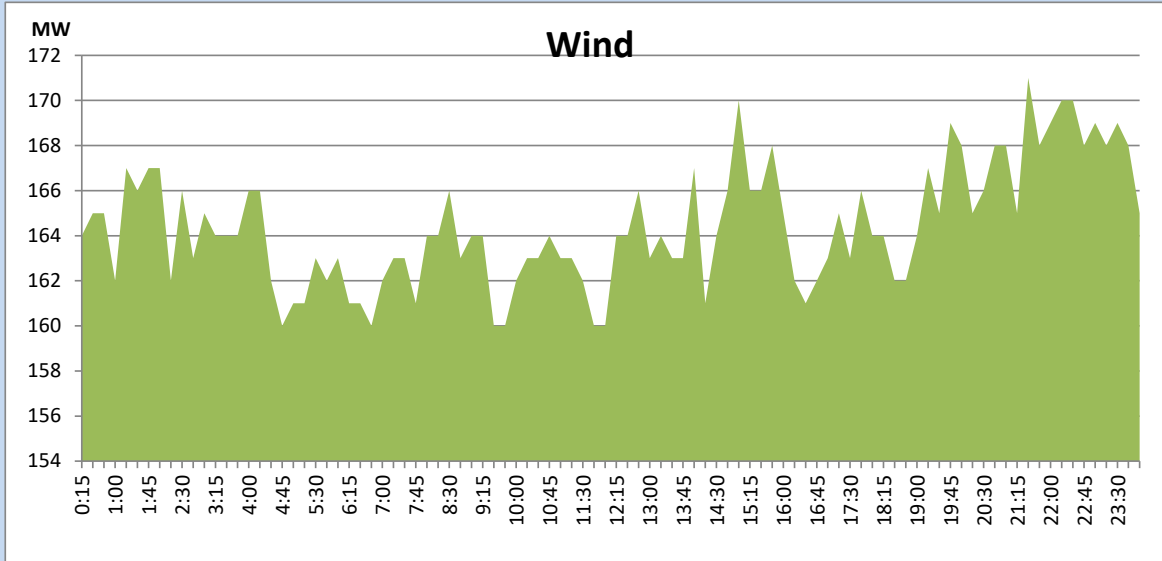
September 9, 2022



## Wind Generation during the Previous day

September 9, 2022

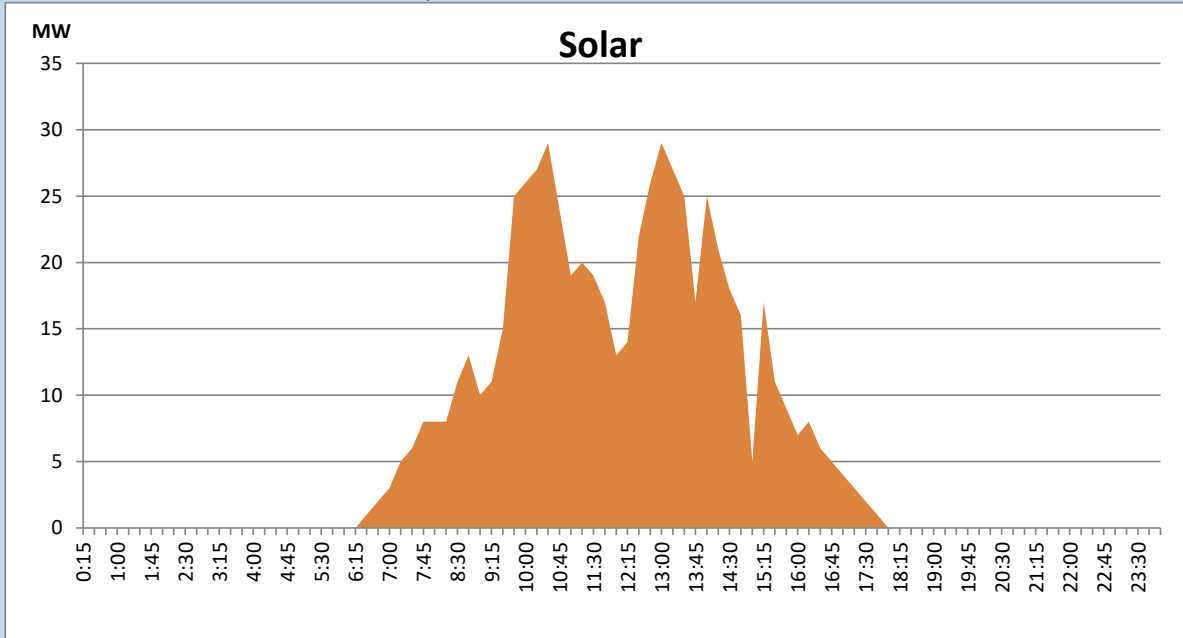
Based on Telemetered Power Stations only



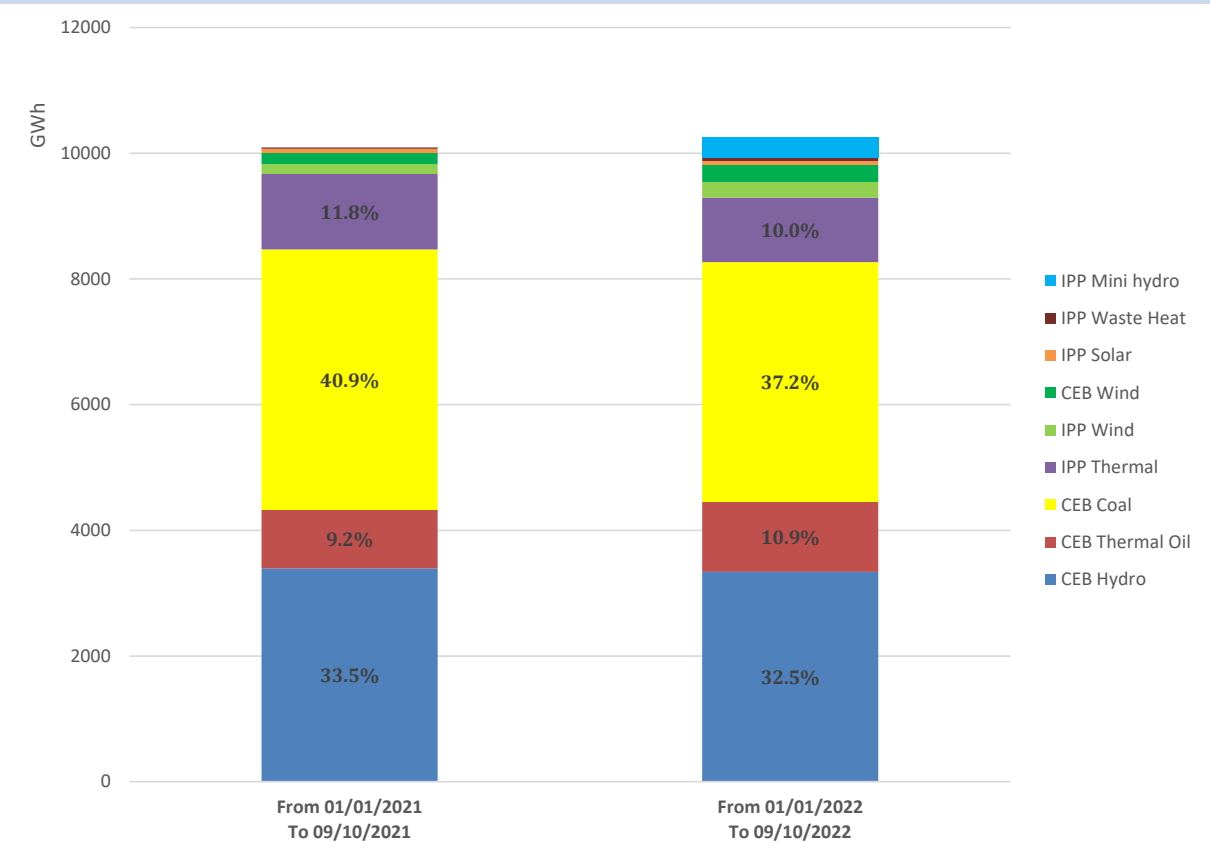
## Solar Generation during the Previous day

September 9, 2022

Based on Telemetered Power Stations only



# Cumulative Dispatch Comparison with Last Year



## Thermal Plant Fuel types

Power Station	Primary Fuel
CEB Thermal	
Sapugaskanda 1	Heavy Fuel
Sapugaskanda 2	Heavy Fuel
Kelanitissa Small Gas Turbines	Auto Diesel
GT 7 - Kelanitissa	Auto Diesel
Kelanitissa CCY	Naphtha or Diesel
Lakvijaya 1	Coal
Lakvijaya 2	Coal
Lakvijaya 3	Coal
Uthuru Janani	Heavy Fuel
Barge CEB	Heavy Fuel

Power Station	Primary Fuel
Private Thermal	
Sojitz - Kelanitissa	Auto Diesel
West Coast	Auto Diesel / Heavy Fuel
ACE Matara	Heavy Fuel
ACE Embilipitiya	Heavy Fuel

Major Incidents during the day -as reported by CEB morning of

September 11, 2022

1) Canyon pond spill stopped at 23:58hrs and laxapana pond spill stopped at 4:15hrs(11/09/2022).