

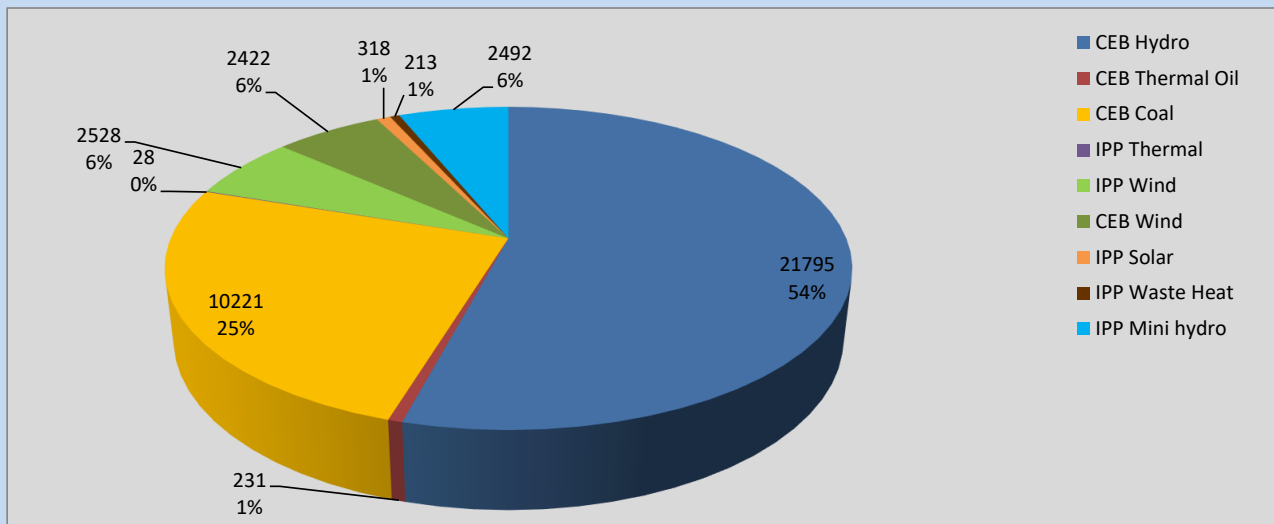
Generation and Reservoirs Statistics

September 9, 2022



PUBLIC UTILITIES COMMISSION OF SRI LANKA

Daily Generation Mix in MWh



Total Generation **40,248 MWh**

Note: Above data is excluding contribution from Roof Top Solar, 1MW Solar and certain Mini Hydro plants

Cumulative Dispatch

Note: Following data is Excluding contribution from Roof Top Solar, 1MW solar and Mini Hydro plants

For Current Month

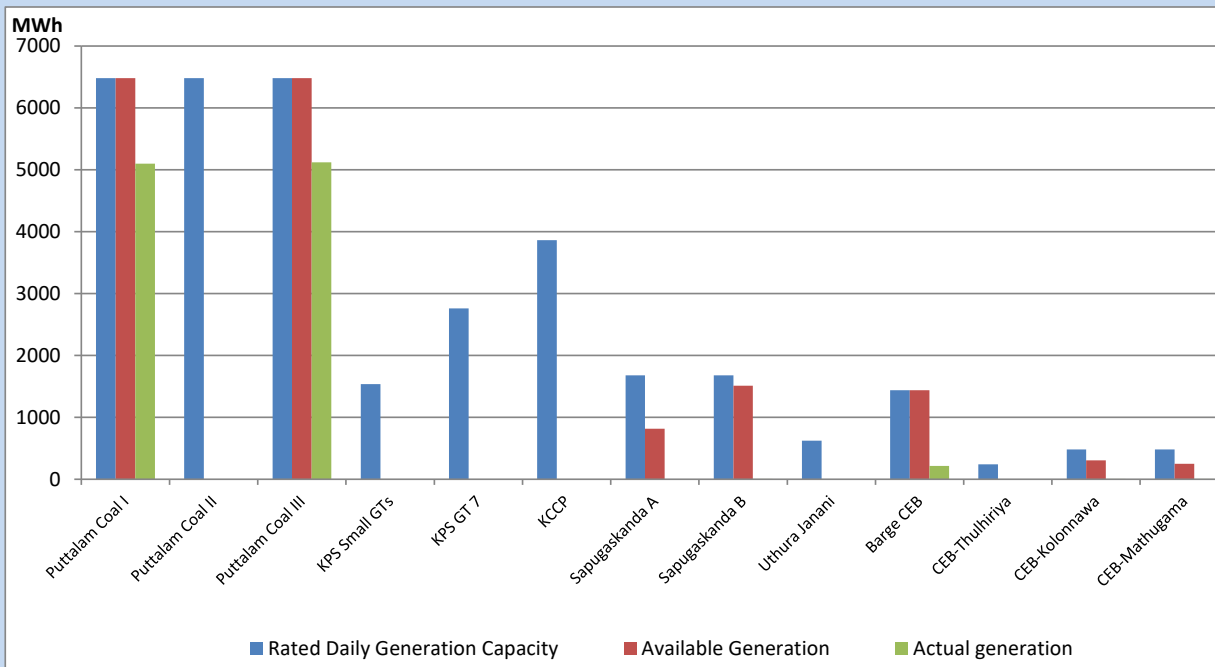
Category	Dispatch (GWh)	Percentage
CEB Hydro	187.00	54.67%
CEB Thermal Oil	1.59	0.46%
CEB Coal	93.56	27.35%
IPP Thermal	0.07	0.02%
SPP Wind	15.82	4.62%
CEB Wind	19.66	5.75%
SPP Solar	2.38	0.70%
SPP Solid Waste	2.03	0.59%
Mini Hydro	19.97	5.84%
Total	342.08	

For Current Year

Category	Dispatch (GWh)	Percentage
CEB Hydro	3,320.7	32.47%
CEB Thermal Oil	1,113.9	10.89%
CEB Coal	3,806.6	37.22%
IPP Thermal	1,027.0	10.04%
SPP Wind	246.6	2.41%
CEB Wind	265.7	2.60%
SPP Solar	64.6	0.63%
SPP Solid Waste	51.2	0.50%
Mini Hydro	330.0	3.23%
Total	10,226.2	

CEB owned Thermal Plant Dispatch

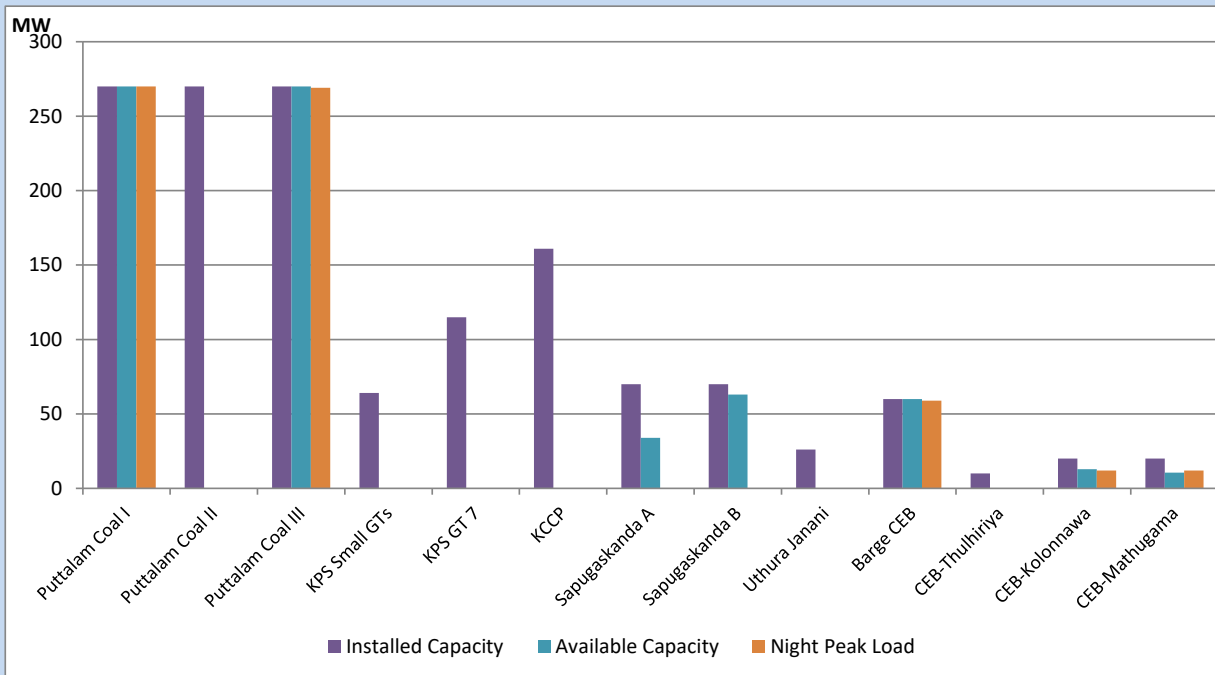
September 9, 2022



Available Generation is estimated based on plant availability at 6.00am on

September 10, 2022

CEB owned Thermal Plant Loading at the Night Peak



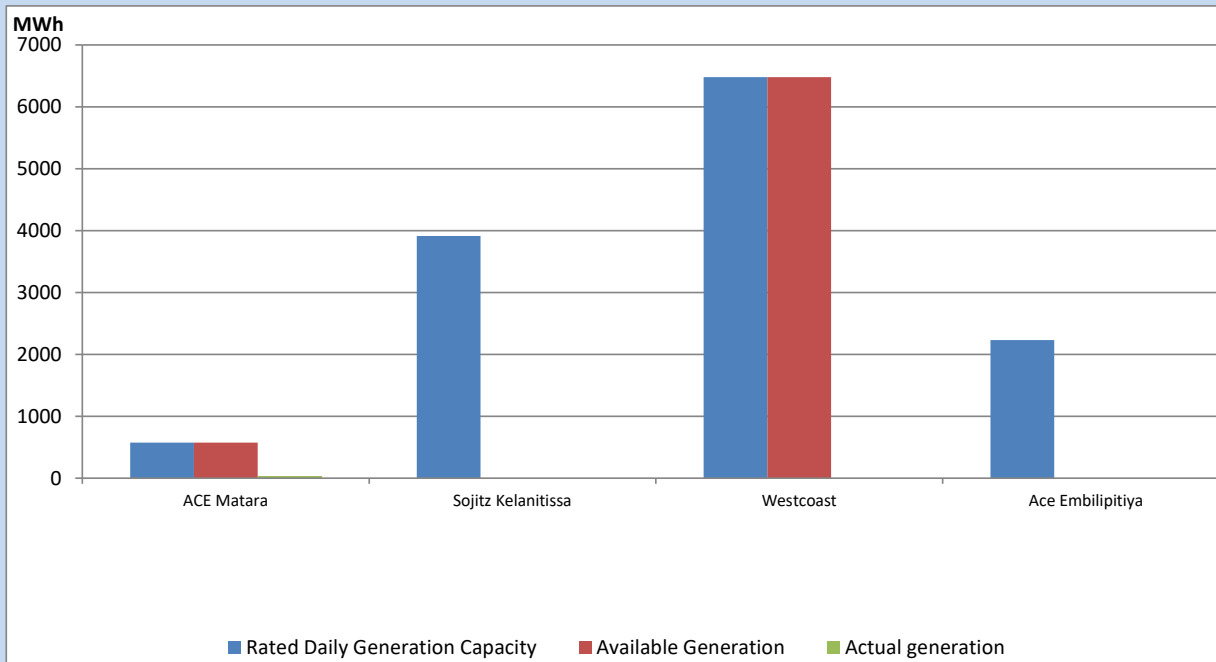
Note- Plant availability is recorded at 6.00 am on

September 10, 2022

IPP owned Thermal Plant Dispatch

September 9, 2022

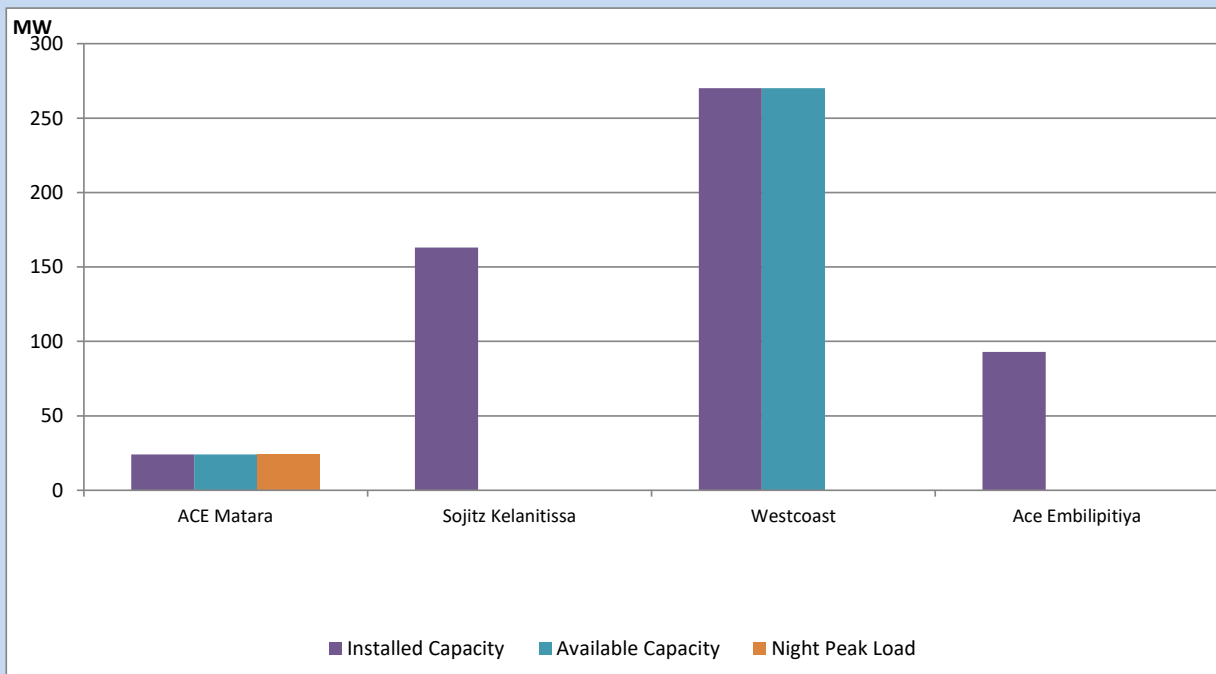
Asia Power, V Power Pallekale, Vpower Galle, V Power Horana, Vpower Hambantota, Vpower Valachchena and Altaqa Mahiyanganaya are not available due to expiration of PPAs



Available Generation is estimated based on plant availability at 6.00am on

September 10, 2022

IPP owned Thermal Plant Loading at the Night Peak

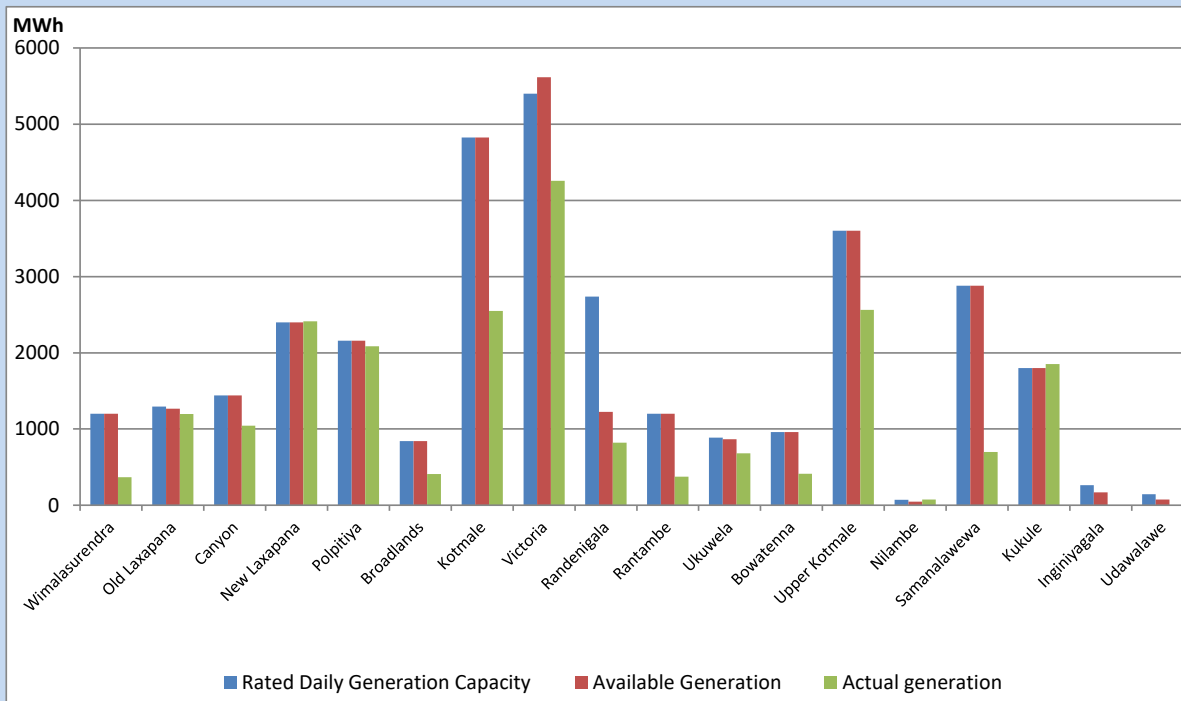


Note- Plant availability is recorded at 6.00 am on

September 10, 2022

Major Hydro Plant Dispatch

September 9, 2022

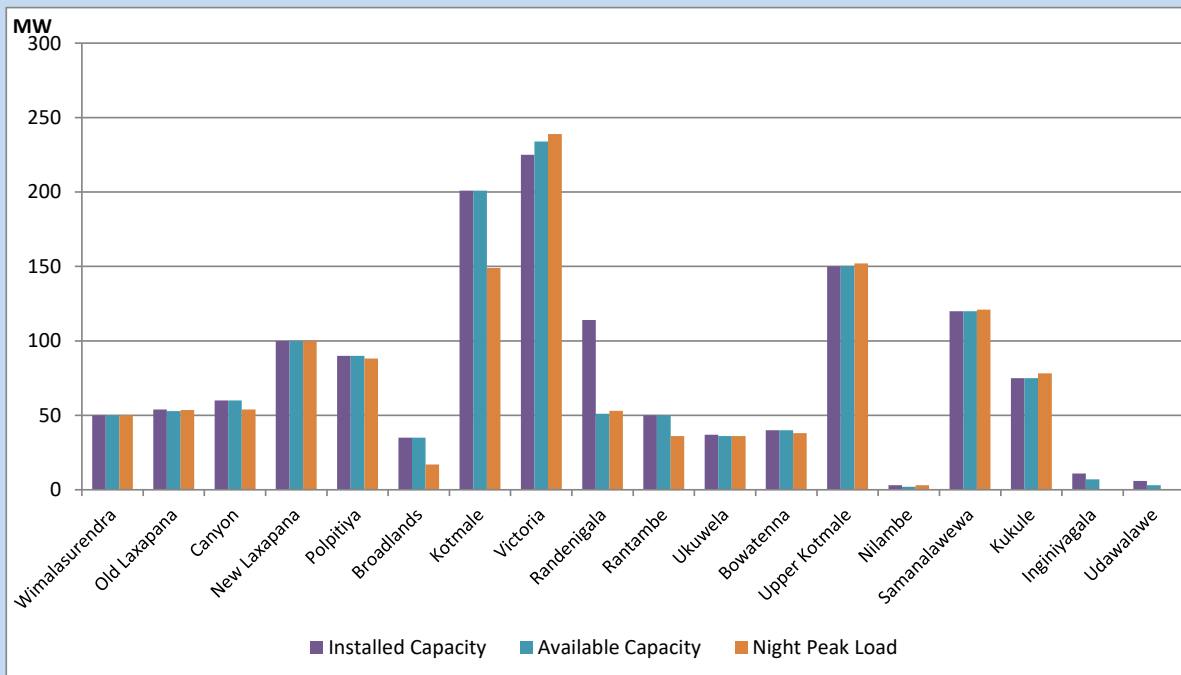


Available Generation is estimated based on plant availability at 6.00am on
Broadlands power plant is operating in the Commissioning Stage

September 10, 2022

Major Hydro Plant Loading at Night Peak

September 9, 2022



Note- Plant availability is recorded at 6.00 am on
Broadlands power plant is operating in the Commissioning Stage

September 10, 2022

Summary of Major Plant performance

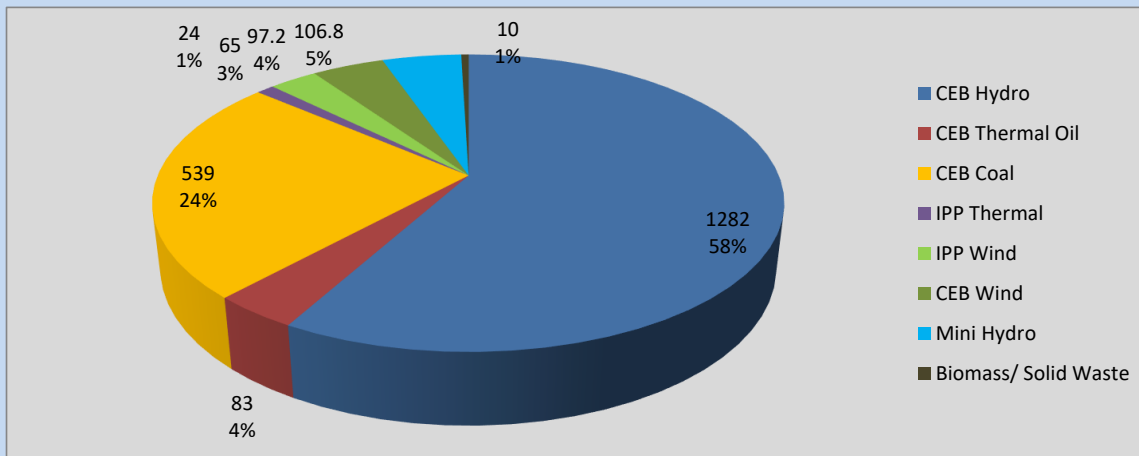
Plant	Installed Capacity	Plant Availability	Night peak Load	Plant Dispatch
	(MW)	(MW)	(MW)	(MWh)
Wimalasurendra	50	50	50	366
Old Laxapana	54	53	54	1,197
Canyon	60	60	54	1,043
New Laxapana	100	100	100	2,414
Polpitiya	90	90	88	2,086
Broadlands	35	35	17	409
Kotmale	201	201	149	2,550
Victoria	225	234	239	4,258
Randenigala	114	51	53	819
Rantambe	50	50	36	373
Ukuwela	37	36	36	680
Bowatenna	40	40	38	411
Upper Kotmale	150	150	152	2,562
Nilambe	3	2	3	75
Samanalawewa	120	120	121	700
Kukule	75	75	78	1,852
Inginiyagala	11	7	0	0
Udawalawe	6	3	0	0
Puttalam Coal I	270	270	270	5,099
Puttalam Coal II	270	0	0	0
Puttalam Coal III	270	270	269	5,122
KPS Small GTs	64	0	0	0
KPS GT 7	115	0	0	0
KCCP	161	0	0	0
Sapugaskanda A	70	34	0	0
Sapugaskanda B	70	63	0	5
Uthura Janani	26	0	0	0
Barge CEB	60	60	59	215
CEB-Thulhiriya	10	0	0	0
CEB-Kolonnawa	20	13	12	6
CEB-Mathugama	20	11	12	5
ACE Matara	24	24	24	28
Sojitz Kelanitissa	163	0	0	0
West Coast	270	270	0	0
ACE Embilipitiya	93	0	0	0
Total	3,397	2,371	2,193	40,248

Plant availability is the availability recorded at 6 am on

September 10, 2022

Contribution to the Night Peak in MW

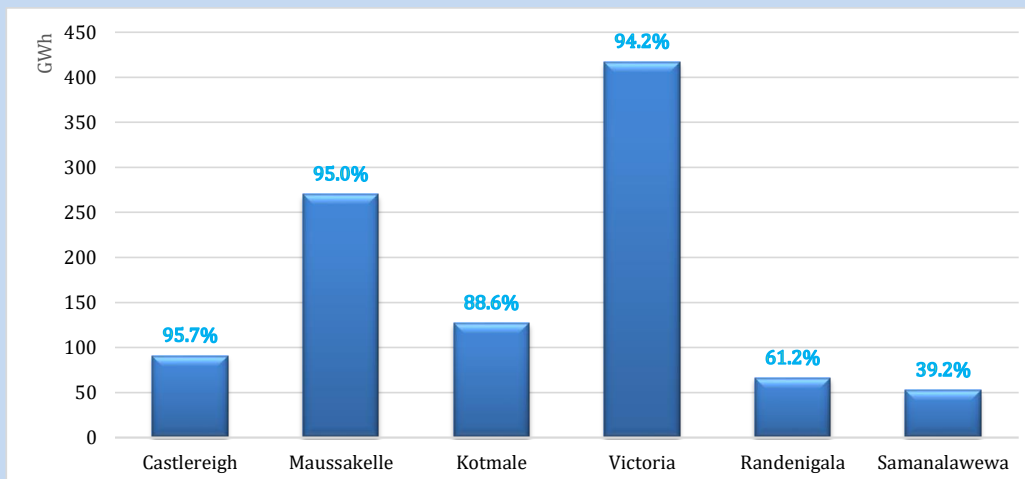
September 9, 2022



Night Peak*	2,206.8 MW
Day Peak	1,800.0 MW
Minimum Demand	1,144.1 MW

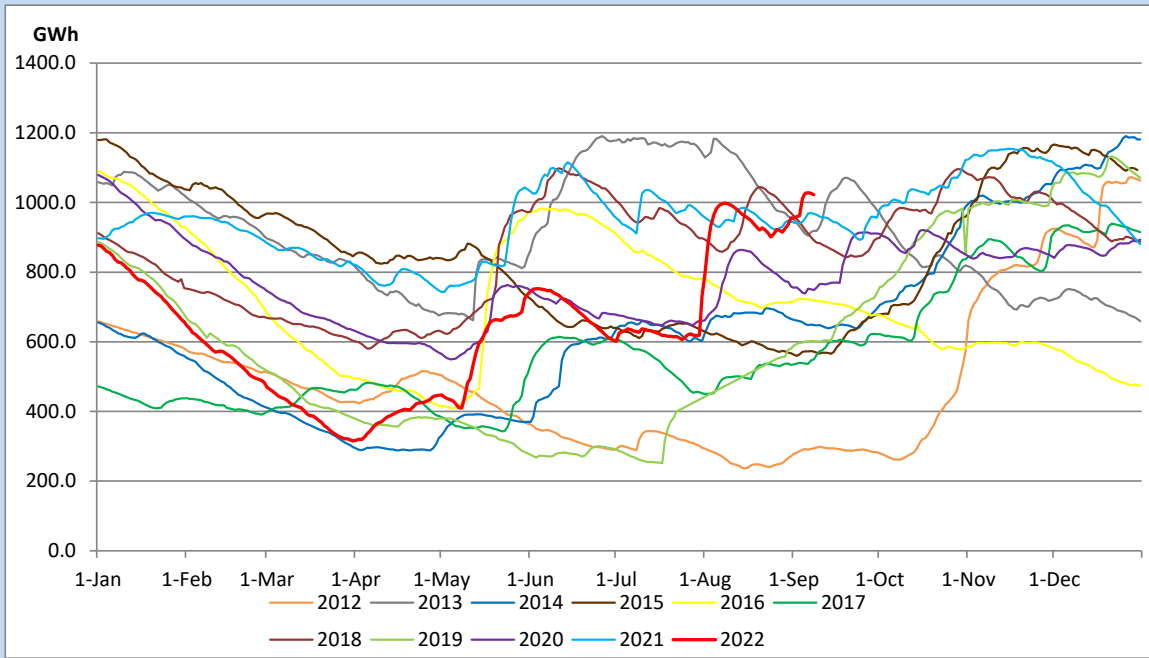
Above figures are excluding contribution from Roof Top Solar, 1MW solar, certain Wind plants and Mini Hydro plants

Reservoir Levels - as at 06.00 Hr on September 10, 2022

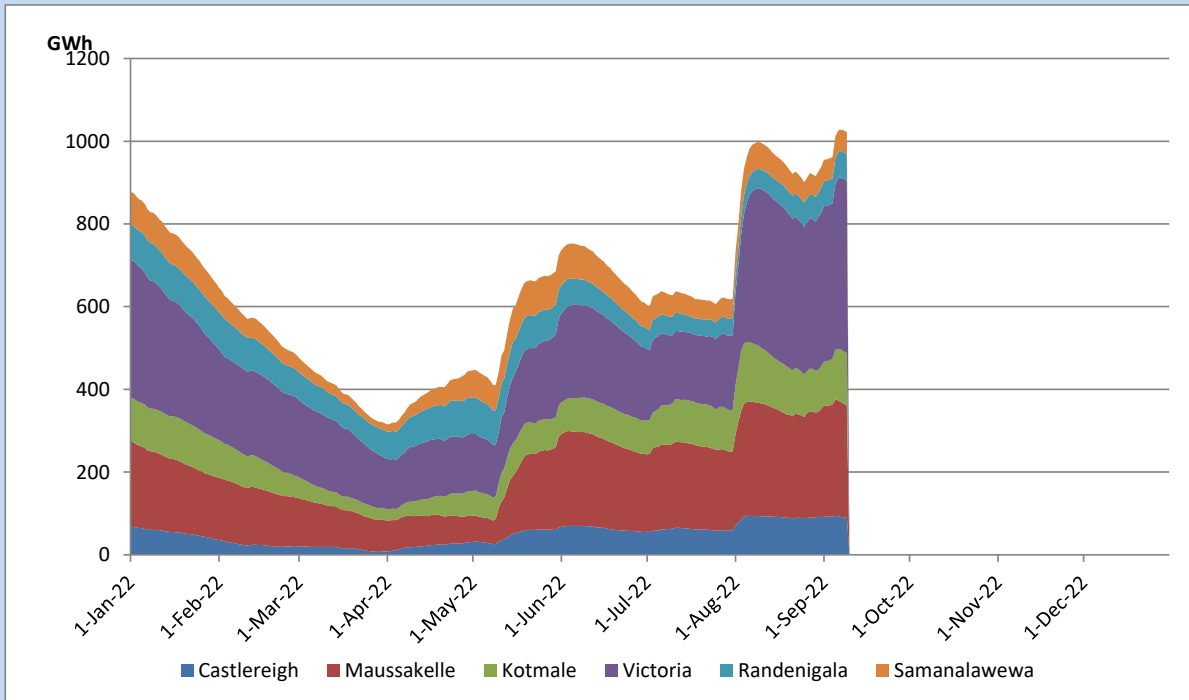


Total Reservoir Level	1022.4 GWh
% of Total capacity	84.8%

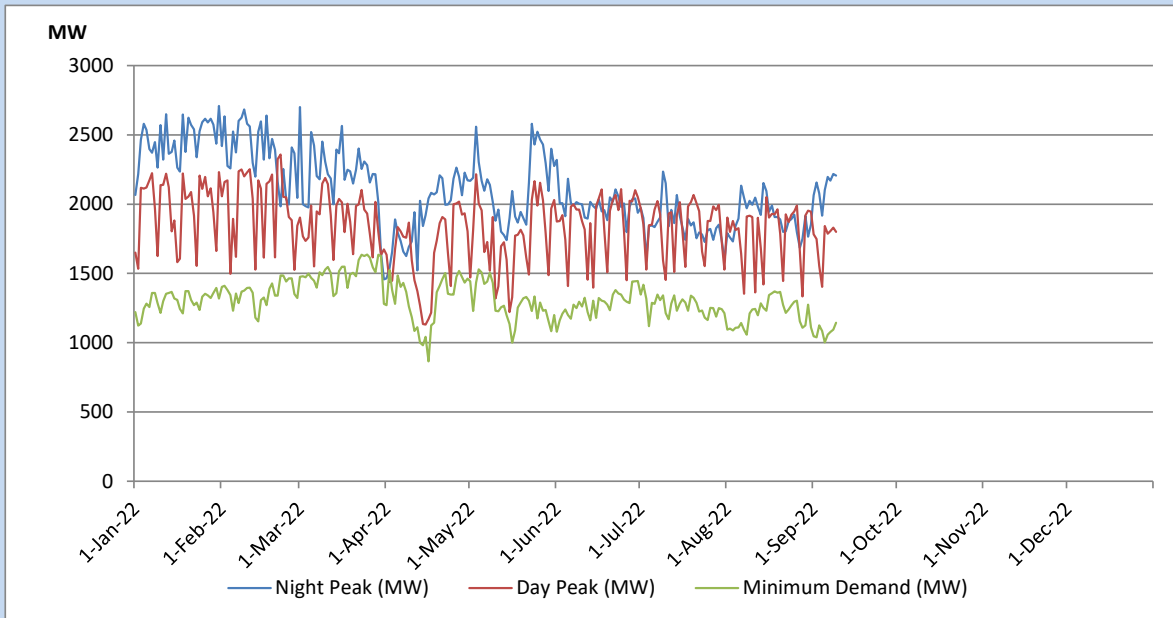
Comparison of Total Reservoir Storage Levels with Past Years



Variation of Major Hydro Reservoir Levels in the current year (GWh)



Variation of Demand during the current year

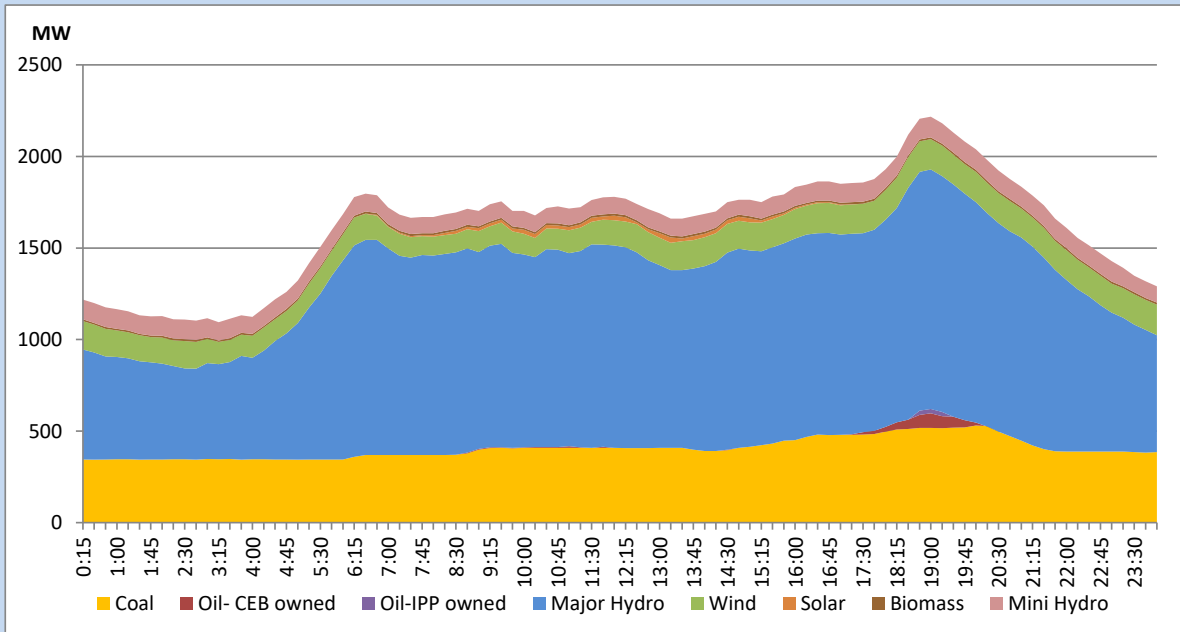


The above figures are excluding contribution from Roof Top Solar, 1MW solar, certain Wind plants and Mini Hydro plants

Daily Load Curve of the Previous day

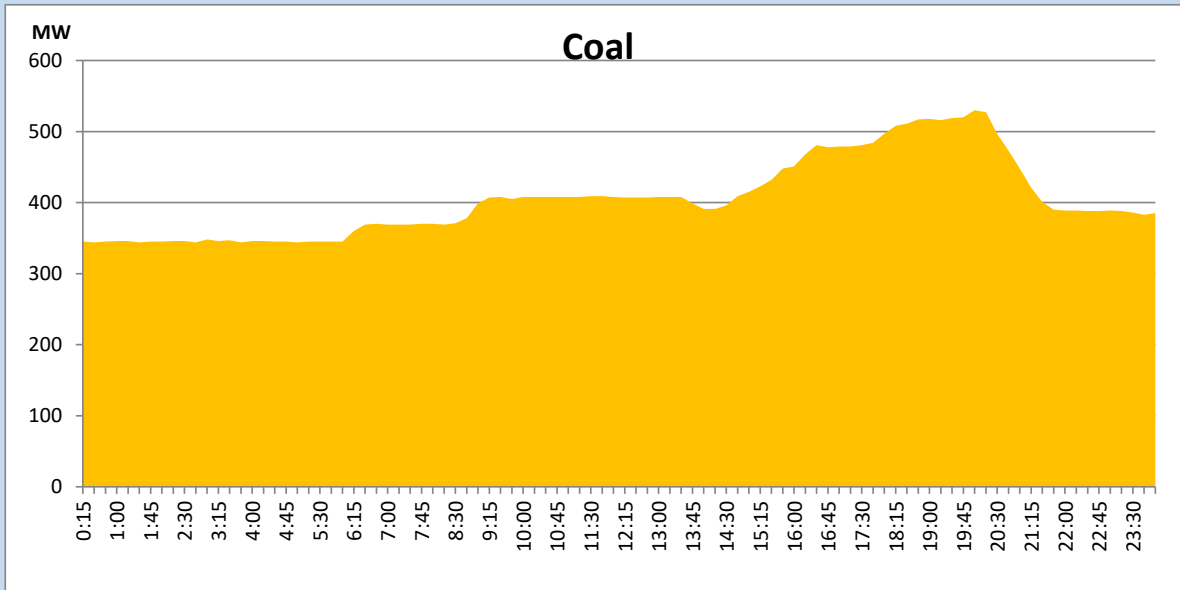
September 8, 2022

Solar and wind data is based on Telemetered Power Stations only



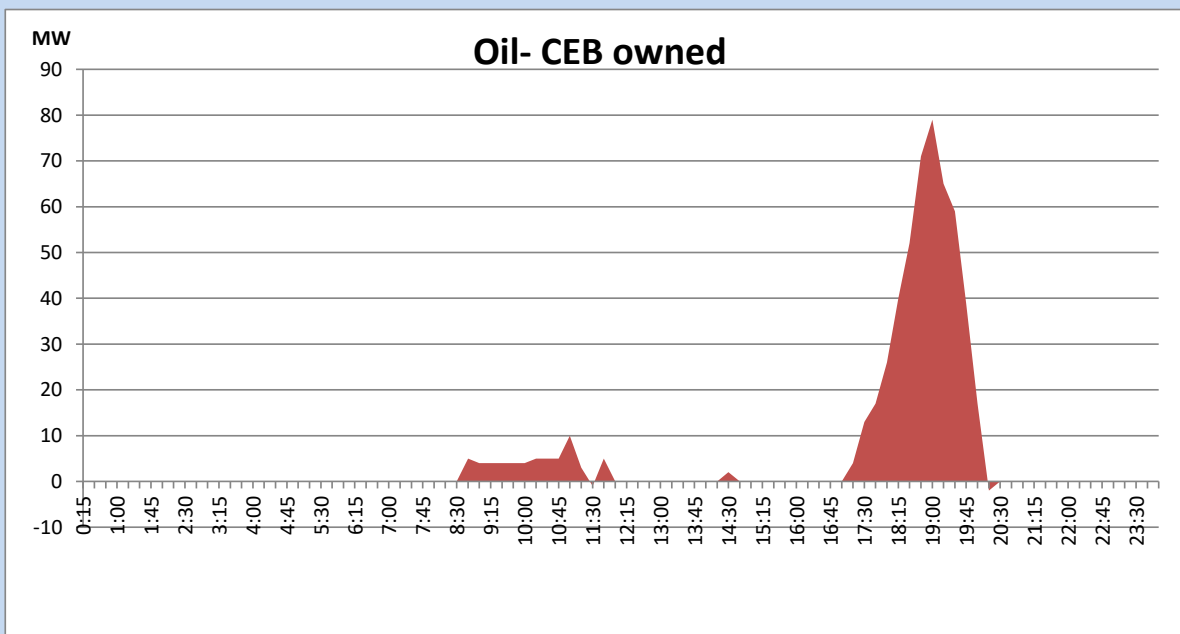
Coal Generation during the Previous day

September 8, 2022



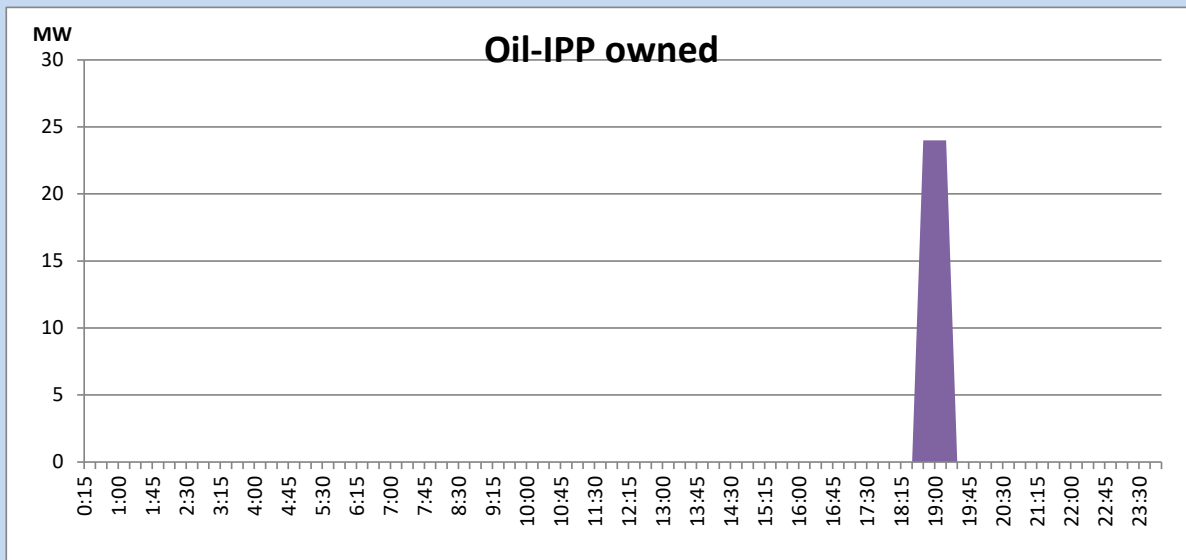
CEB Oil Plant Generation during the Previous day

September 8, 2022



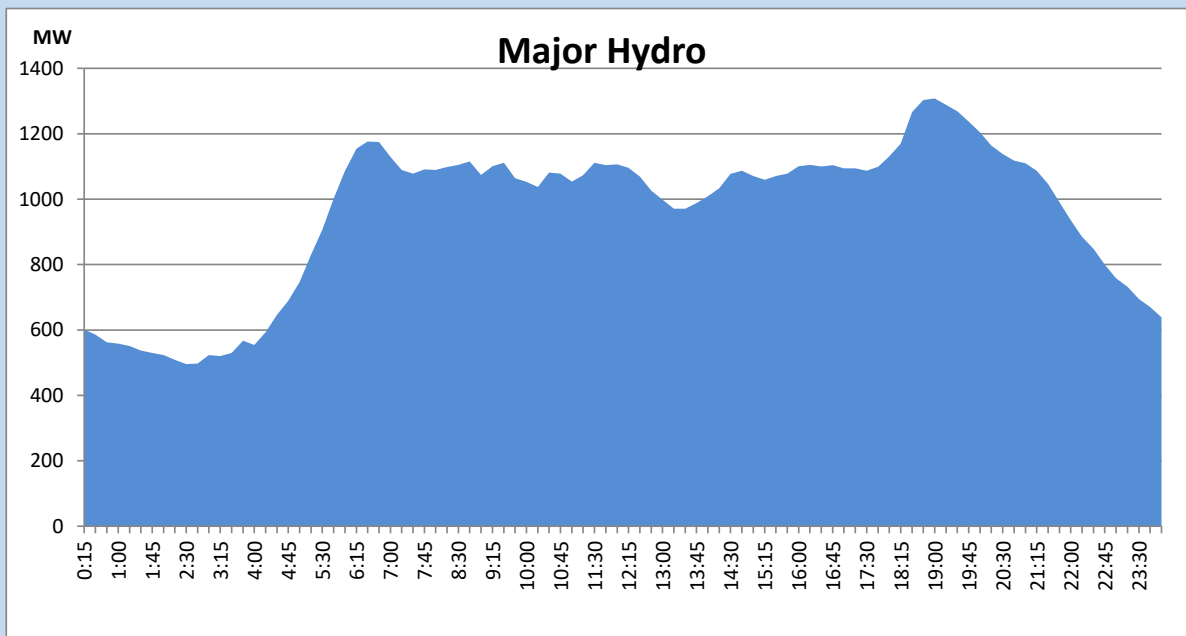
IPP Oil Plant Generation during the Previous day

September 8, 2022



Major Hydro Generation during the Previous day

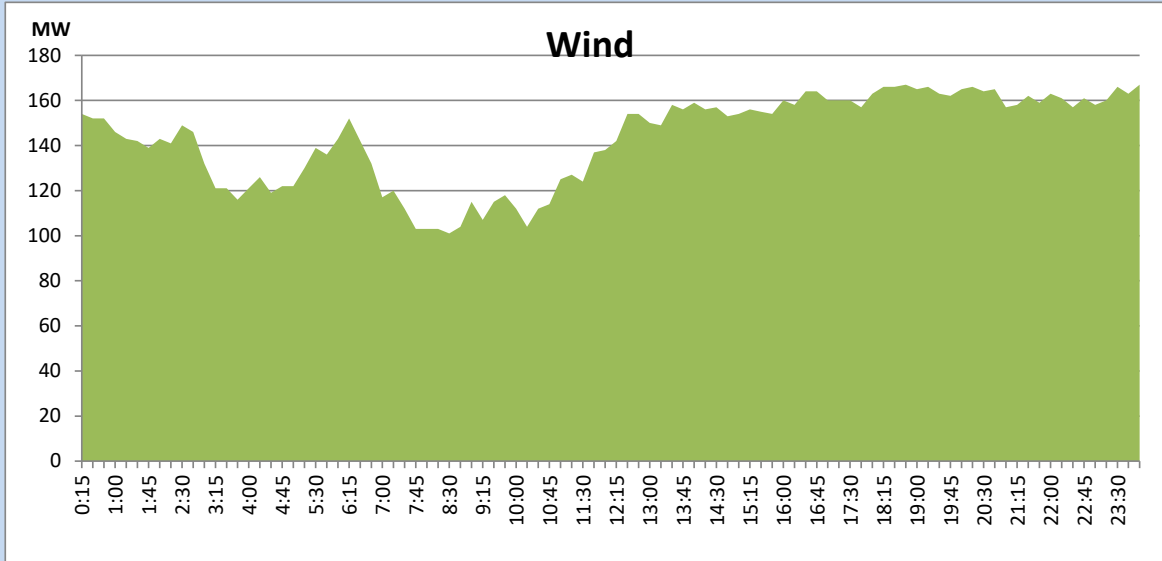
September 8, 2022



Wind Generation during the Previous day

September 8, 2022

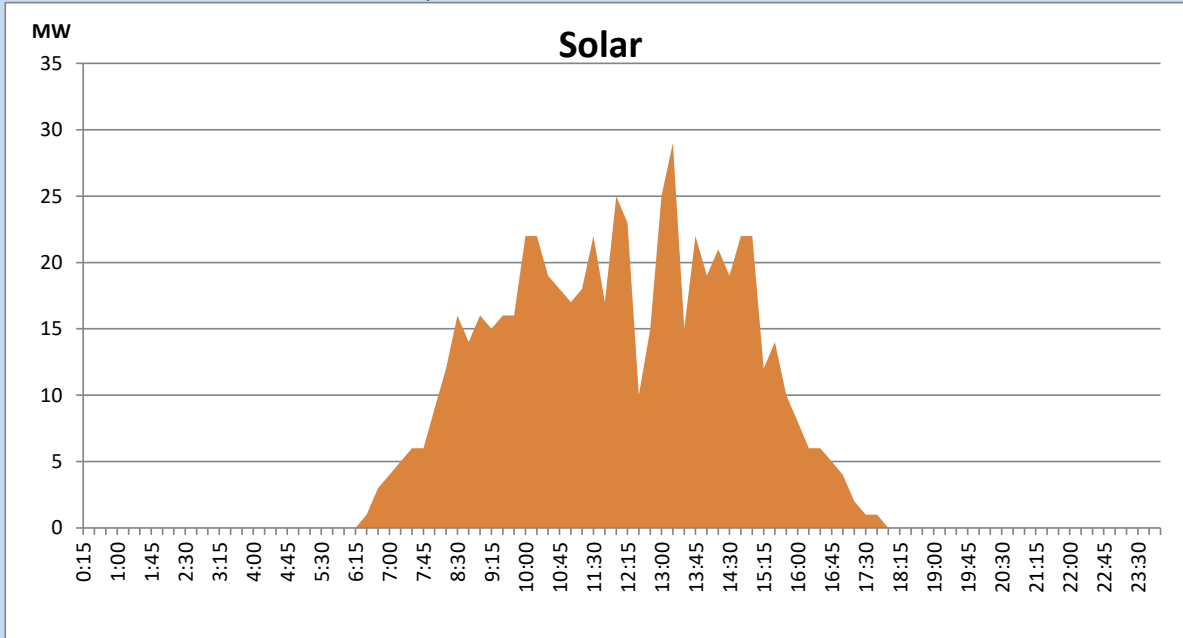
Based on Telemetered Power Stations only



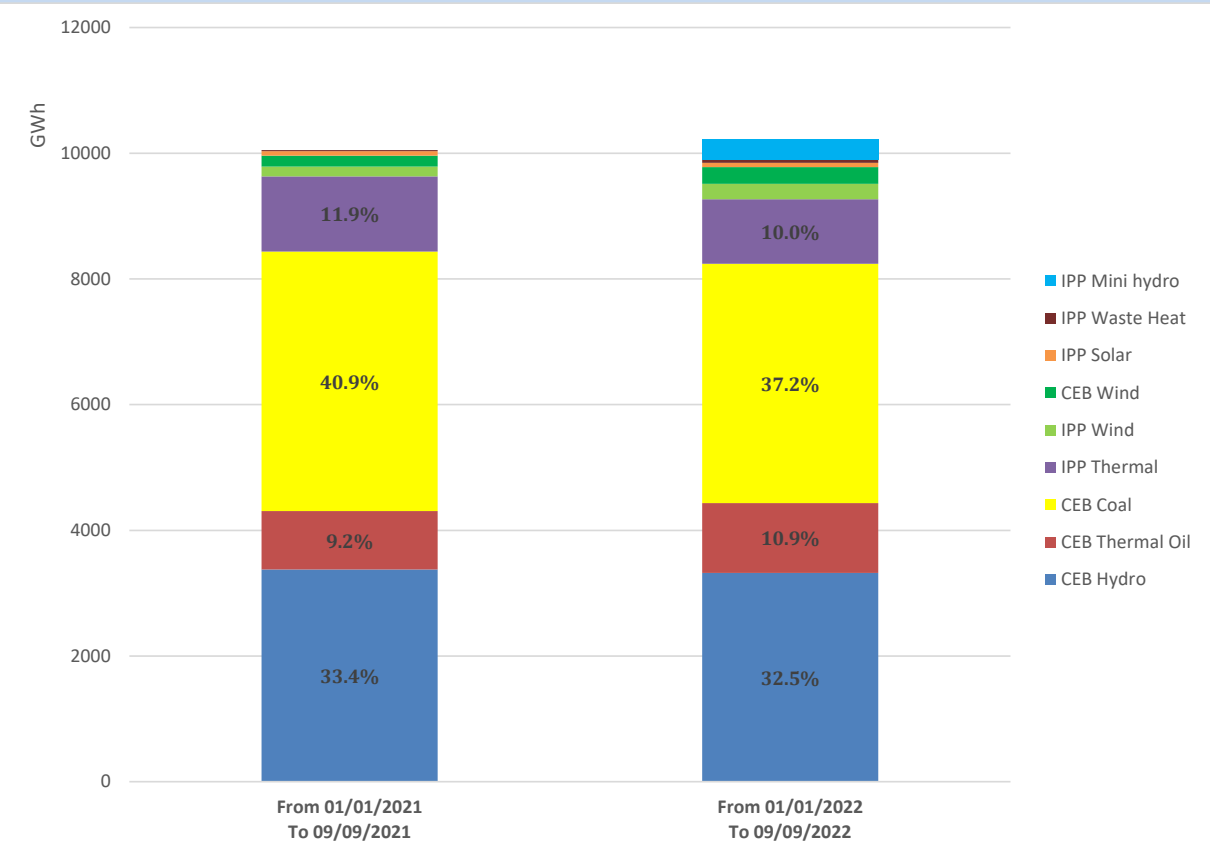
Solar Generation during the Previous day

September 8, 2022

Based on Telemetered Power Stations only



Cumulative Dispatch Comparison with Last Year



Thermal Plant Fuel types

Power Station	Primary Fuel
CEB Thermal	
Sapugaskanda 1	Heavy Fuel
Sapugaskanda 2	Heavy Fuel
Kelanitissa Small Gas Turbines	Auto Diesel
GT 7 - Kelanitissa	Auto Diesel
Kelanitissa CCY	Naphtha or Diesel
Lakvijaya 1	Coal
Lakvijaya 2	Coal
Lakvijaya 3	Coal
Uthuru Janani	Heavy Fuel
Barge CEB	Heavy Fuel

Power Station	Primary Fuel
Private Thermal	
Sojitz - Kelanitissa	Auto Diesel
West Coast	Auto Diesel / Heavy Fuel
ACE Matara	Heavy Fuel
ACE Embilipitiya	Heavy Fuel

Major Incidents during the day -as reported by CEB morning of

September 10, 2022

- 1) Kukule both m/cs de-loaded and stopped automatically at 10:57hrs with an indication of head race intake gate locked. Kukule unit 02 and unit 01 resumed generation at 11:13hrs and 11:16hrs respectively.
- 2) N' Polpitiya – Athurugiriya/Thulhiriya cct tripped from all three ends at 11:36hrs due to the operation of distance protection. N' Polpitiya – Athurugiriya/Thulhiriya cct was restored at 11:47hrs.
- 3) Canyon and Laxapana ponds spilling started at 12:01hrs and 14:45hrs respectively and continues to the present hour.
- 4) Seethawaka GSS 132/33kV T/F 02 tripped at 13:17hrs with an indication of OLTC Buchholz operated. Seethawaka T/F 02 restored at 19:09hrs.
- 5) N' Polpitiya – Athurugiriya/Thulhiriya cct tripped from all three ends at 01:44hrs (10.09.2022) due to the operation of distance protection. The system recovered with the operation of UFLS stage-I. N' Polpitiya – Athurugiriya/Thulhiriya cct was restored at 01:53hrs (10.09.2022) and all affected feeders were normalized by 01:55hrs (10.09.2022).