

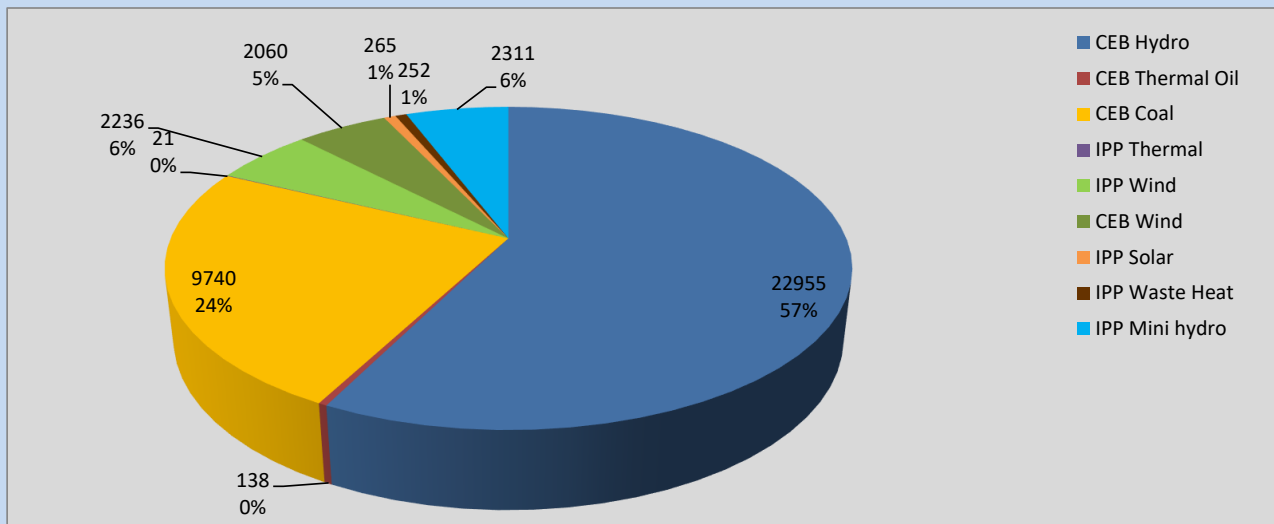
# Generation and Reservoirs Statistics

September 8, 2022



PUBLIC UTILITIES COMMISSION OF SRI LANKA

## Daily Generation Mix in MWh



**Total Generation** **39,978 MWh**

Note: Above data is excluding contribution from Roof Top Solar, 1MW Solar and certain Mini Hydro plants

## Cumulative Dispatch

Note: Following data is Excluding contribution from Roof Top Solar, 1MW solar and Mini Hydro plants

### For Current Month

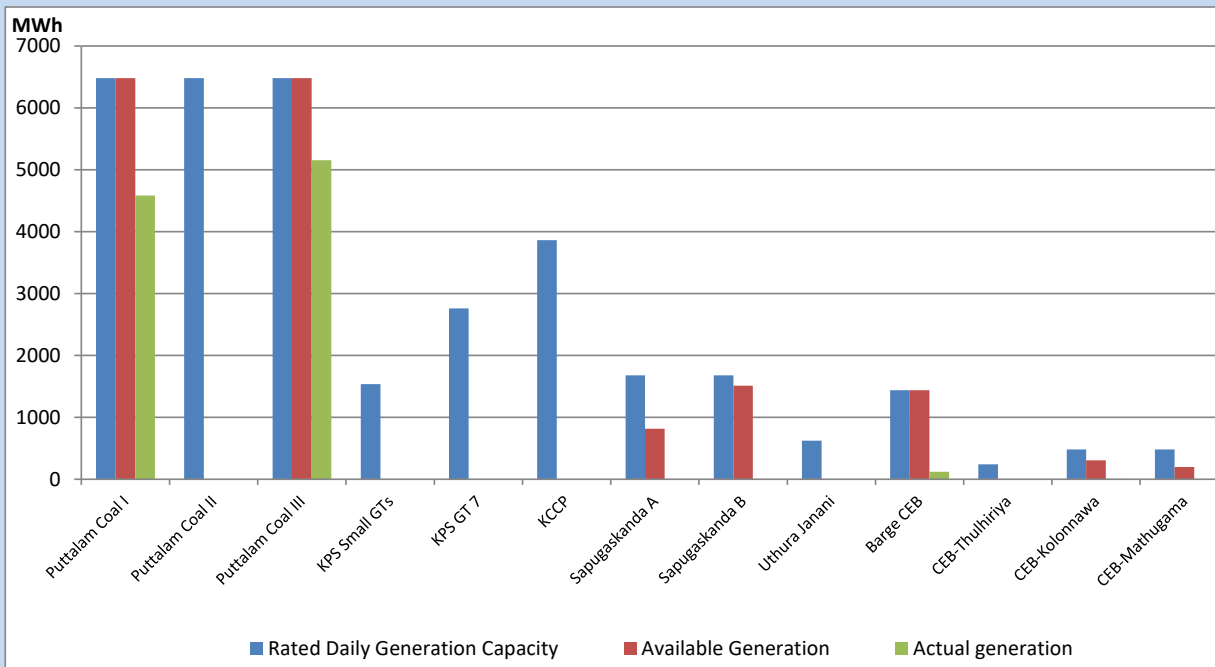
Category	Dispatch (GWh)	Percentage
CEB Hydro	165.20	54.73%
CEB Thermal Oil	1.36	0.45%
CEB Coal	83.34	27.61%
IPP Thermal	0.04	0.01%
SPP Wind	13.29	4.40%
CEB Wind	17.24	5.71%
SPP Solar	2.06	0.68%
SPP Solid Waste	1.82	0.60%
Mini Hydro	17.48	5.79%
<b>Total</b>	<b>301.83</b>	

### For Current Year

Category	Dispatch (GWh)	Percentage
CEB Hydro	3,298.9	32.39%
CEB Thermal Oil	1,113.7	10.93%
CEB Coal	3,796.4	37.27%
IPP Thermal	1,027.0	10.08%
SPP Wind	244.1	2.40%
CEB Wind	263.3	2.59%
SPP Solar	64.3	0.63%
SPP Solid Waste	51.0	0.50%
Mini Hydro	327.5	3.22%
<b>Total</b>	<b>10,185.9</b>	

## CEB owned Thermal Plant Dispatch

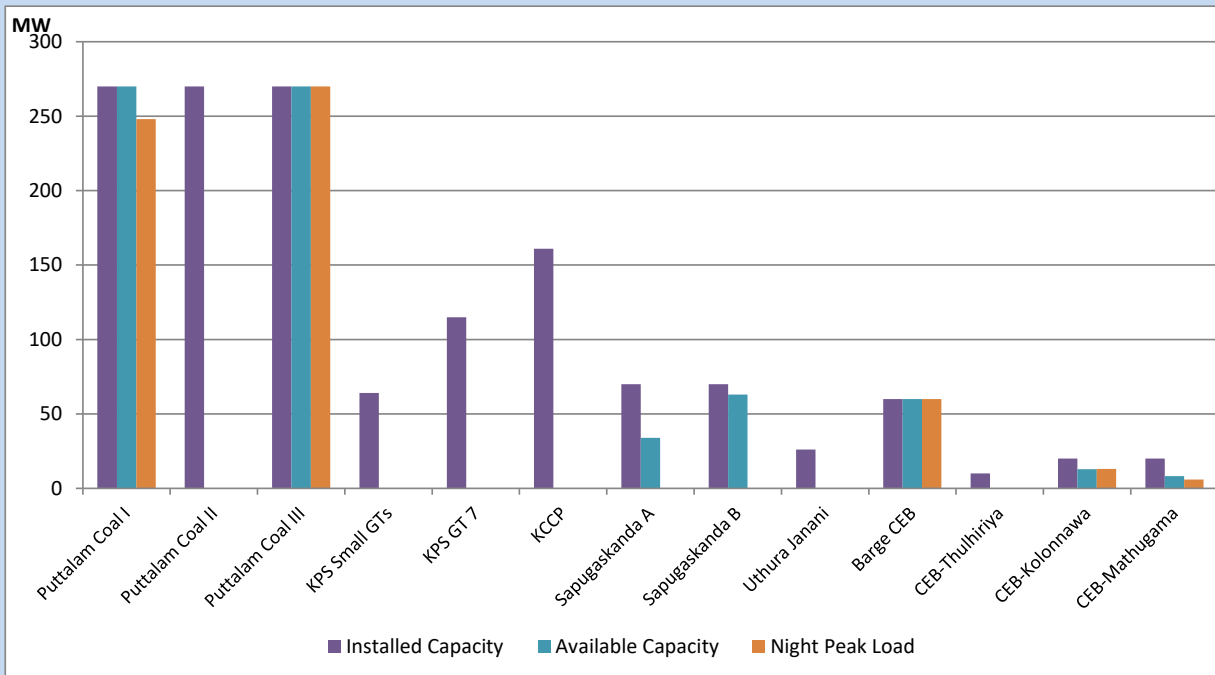
September 8, 2022



Available Generation is estimated based on plant availability at 6.00am on

September 9, 2022

## CEB owned Thermal Plant Loading at the Night Peak



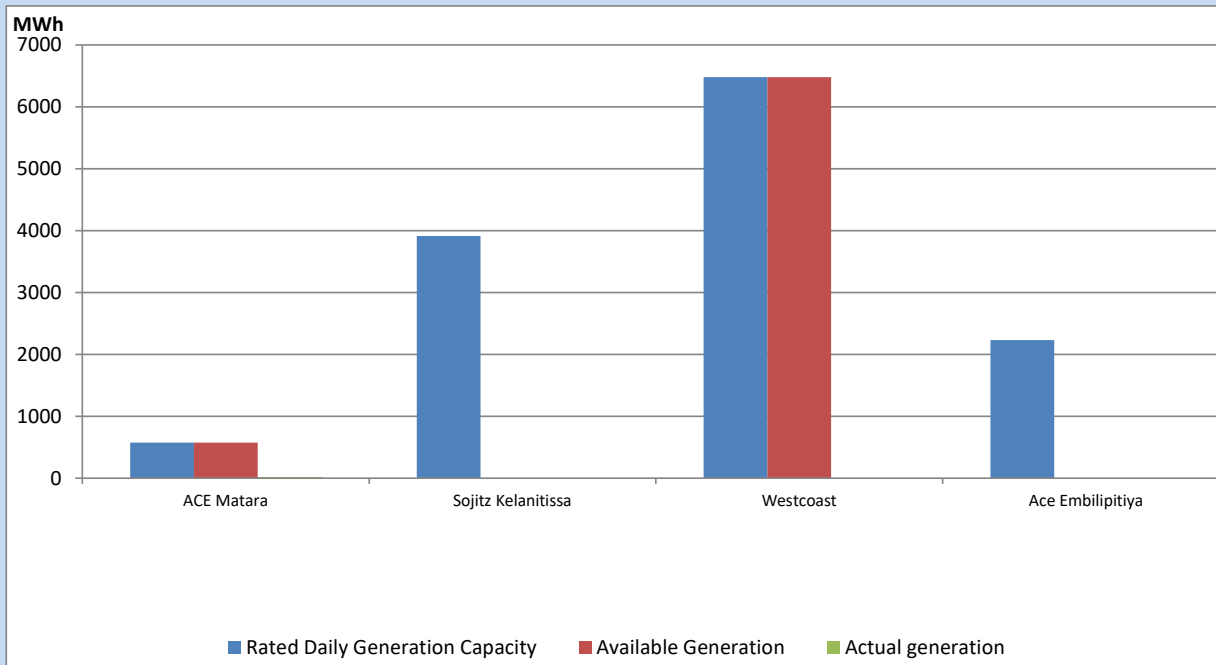
Note- Plant availability is recorded at 6.00 am on

September 9, 2022

## IPP owned Thermal Plant Dispatch

September 8, 2022

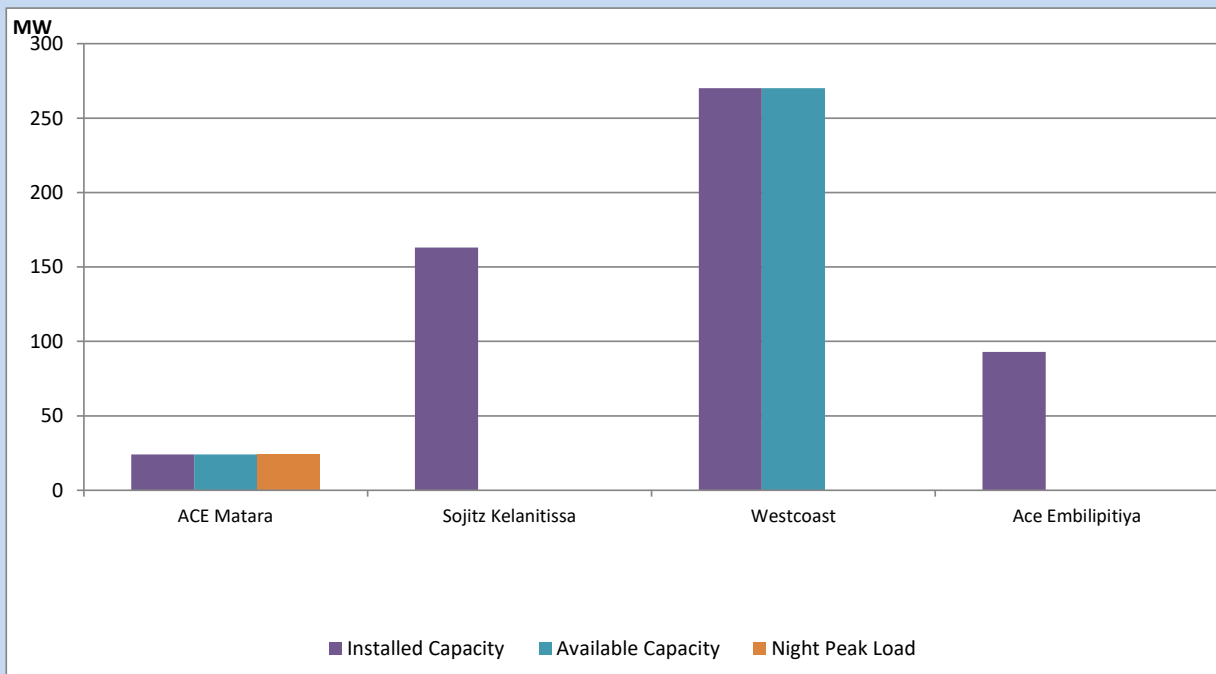
Asia Power, V Power Pallekale, Vpower Galle, V Power Horana, Vpower Hambantota, Vpower Valachchena and Altaqa Mahiyanganaya are not available due to expiration of PPAs



Available Generation is estimated based on plant availability at 6.00am on

September 9, 2022

## IPP owned Thermal Plant Loading at the Night Peak

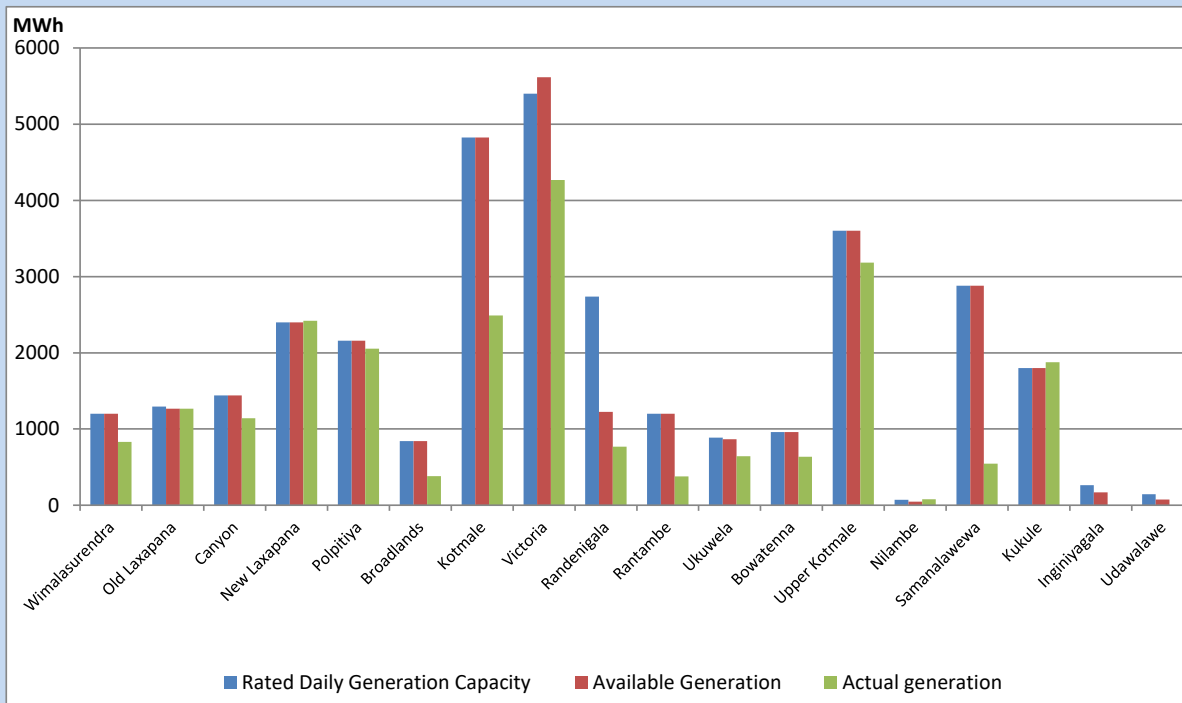


Note- Plant availability is recorded at 6.00 am on

September 9, 2022

## Major Hydro Plant Dispatch

September 8, 2022

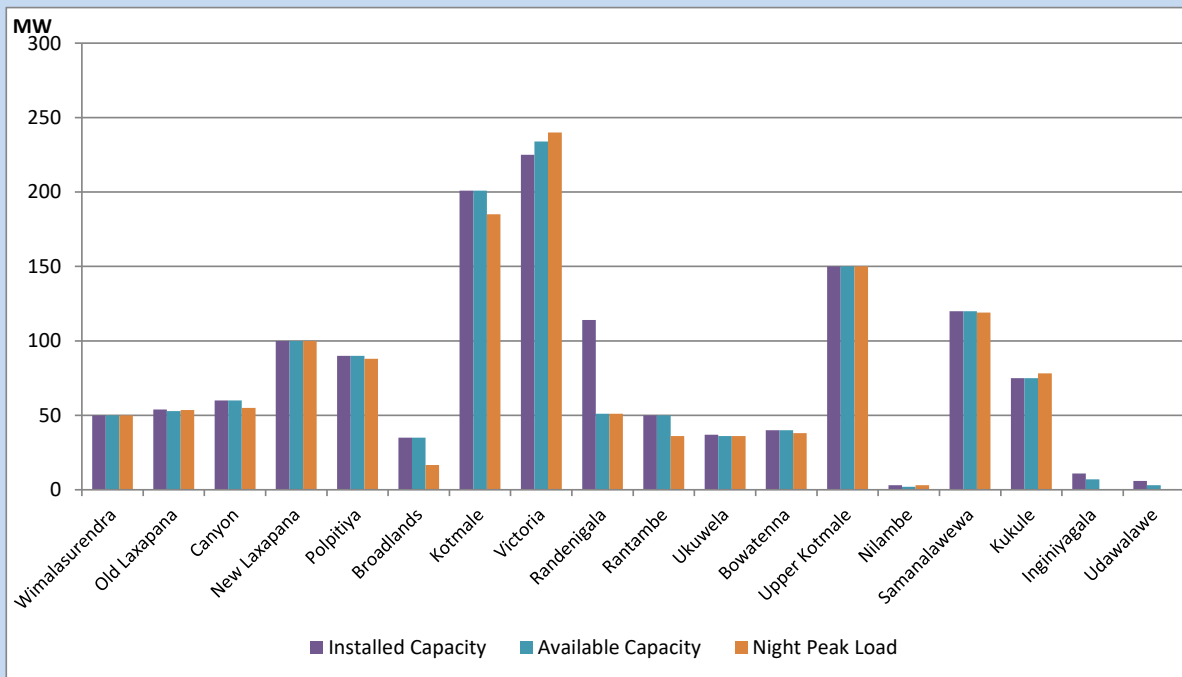


Available Generation is estimated based on plant availability at 6.00am on September 9, 2022  
 Broadlands power plant is operating in the Commissioning Stage

September 9, 2022

## Major Hydro Plant Loading at Night Peak

September 8, 2022



Note- Plant availability is recorded at 6.00 am on September 9, 2022  
 Broadlands power plant is operating in the Commissioning Stage

## Summary of Major Plant performance

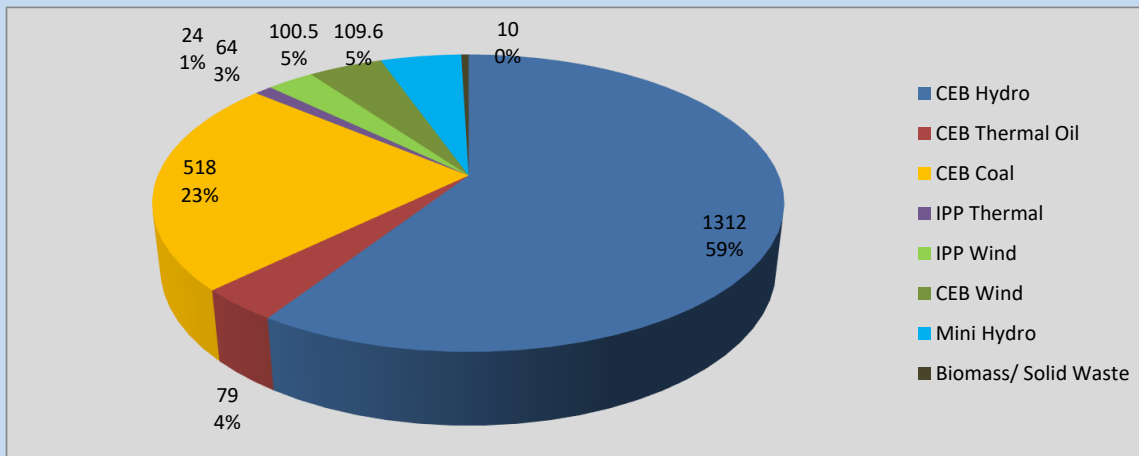
Plant	Installed Capacity	Plant Availability	Night peak Load	Plant Dispatch
	(MW)	(MW)	(MW)	(MWh)
Wimalasurendra	50	50	50	832
Old Laxapana	54	53	54	1,266
Canyon	60	60	55	1,142
New Laxapana	100	100	100	2,420
Polpitiya	90	90	88	2,053
Broadlands	35	35	17	380
Kotmale	201	201	185	2,490
Victoria	225	234	240	4,269
Randenigala	114	51	51	768
Rantambe	50	50	36	377
Ukuwela	37	36	36	643
Bowatenna	40	40	38	636
Upper Kotmale	150	150	150	3,182
Nilambe	3	2	3	77
Samanalawewa	120	120	119	545
Kukule	75	75	78	1,875
Inginiyagala	11	7	0	0
Udawalawe	6	3	0	0
Puttalam Coal I	270	270	248	4,584
Puttalam Coal II	270	0	0	0
Puttalam Coal III	270	270	270	5,156
KPS Small GTs	64	0	0	0
KPS GT 7	115	0	0	0
KCCP	161	0	0	0
Sapugaskanda A	70	34	0	0
Sapugaskanda B	70	63	0	4
Uthura Janani	26	0	0	0
Barge CEB	60	60	60	123
CEB-Thulhiriya	10	0	0	0
CEB-Kolonnawa	20	13	13	7
CEB-Mathugama	20	8	6	4
ACE Matara	24	24	24	21
Sojitz Kelanitissa	163	0	0	0
West Coast	270	270	0	0
ACE Embilipitiya	93	0	0	0
<b>Total</b>	<b>3,397</b>	<b>2,369</b>	<b>2,204</b>	<b>39,978</b>

Plant availability is the availability recorded at 6 am on

September 9, 2022

## Contribution to the Night Peak in MW

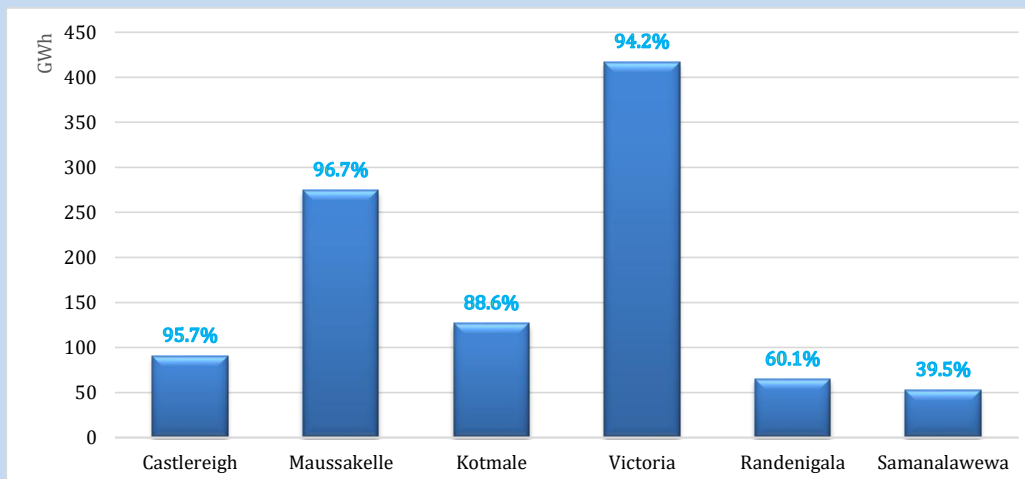
September 8, 2022



Night Peak*	2,217.4 MW
Day Peak	1,830.4 MW
Minimum Demand	1,094.8 MW

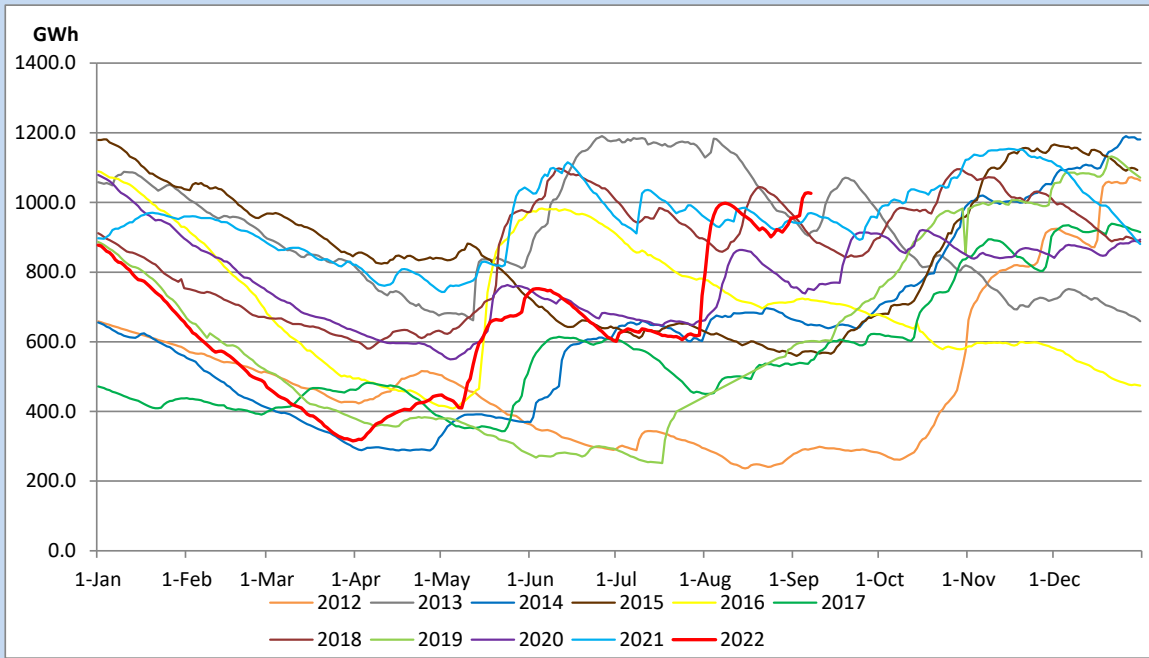
Above figures are excluding contribution from Roof Top Solar, 1MW solar, certain Wind plants and Mini Hydro plants

## Reservoir Levels - as at 06.00 Hr on September 9, 2022

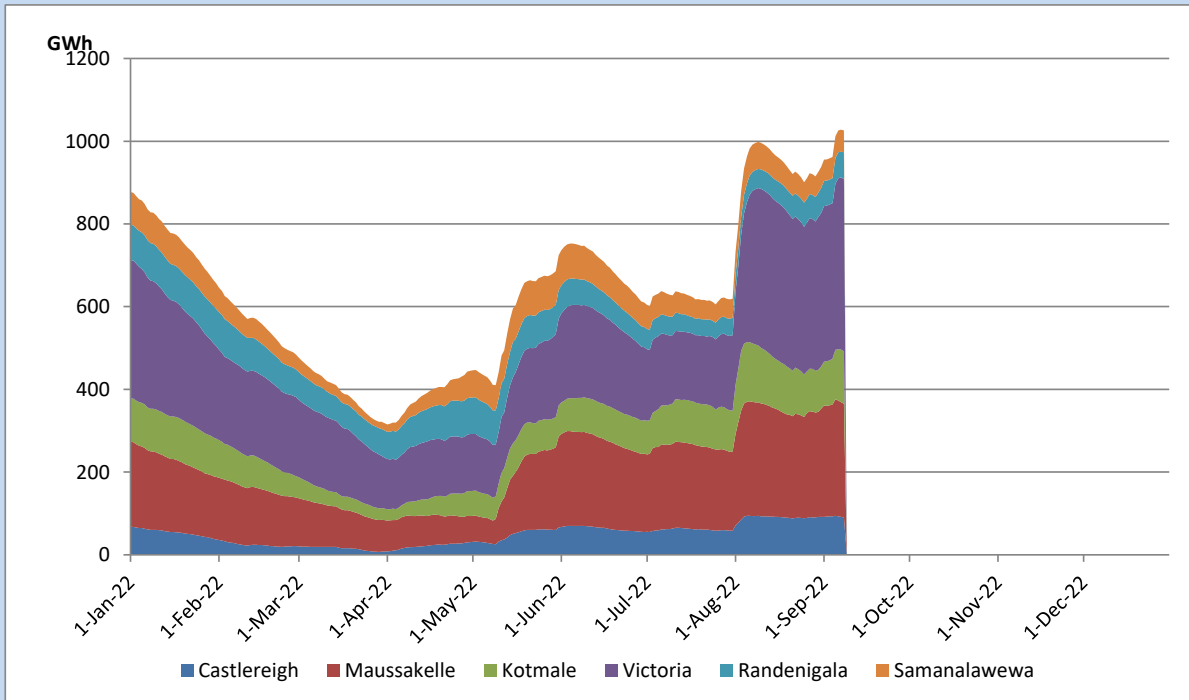


Total Reservoir Level	1026.2 GWh
% of Total capacity	85.1%

## Comparison of Total Reservoir Storage Levels with Past Years

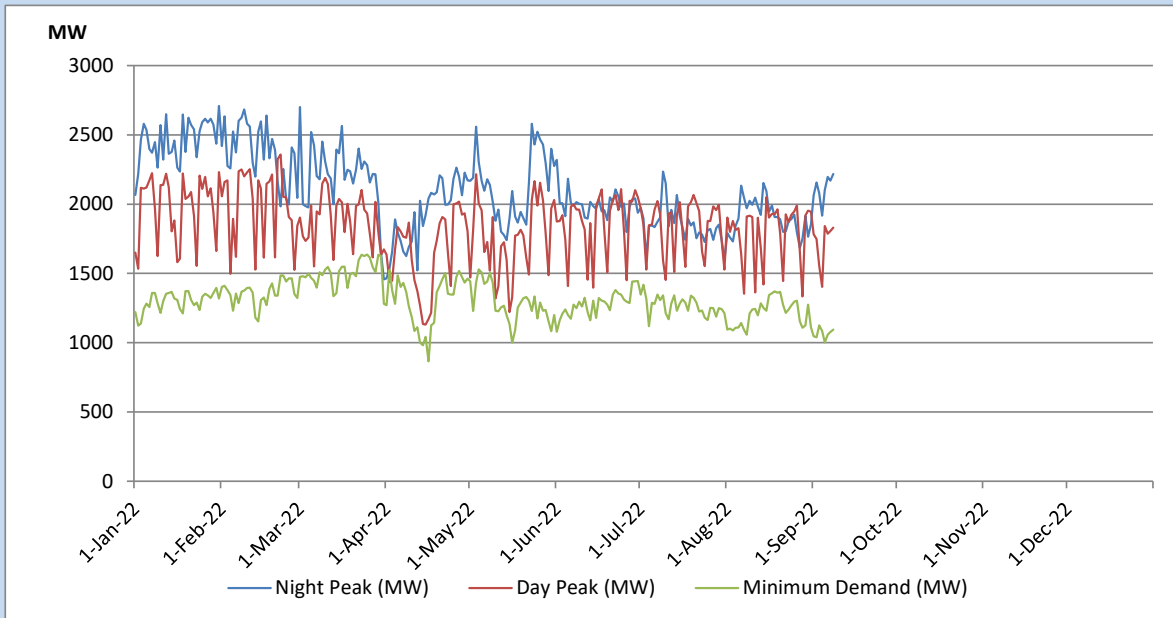


## Variation of Major Hydro Reservoir Levels in the current year (GWh)





## Variation of Demand during the current year

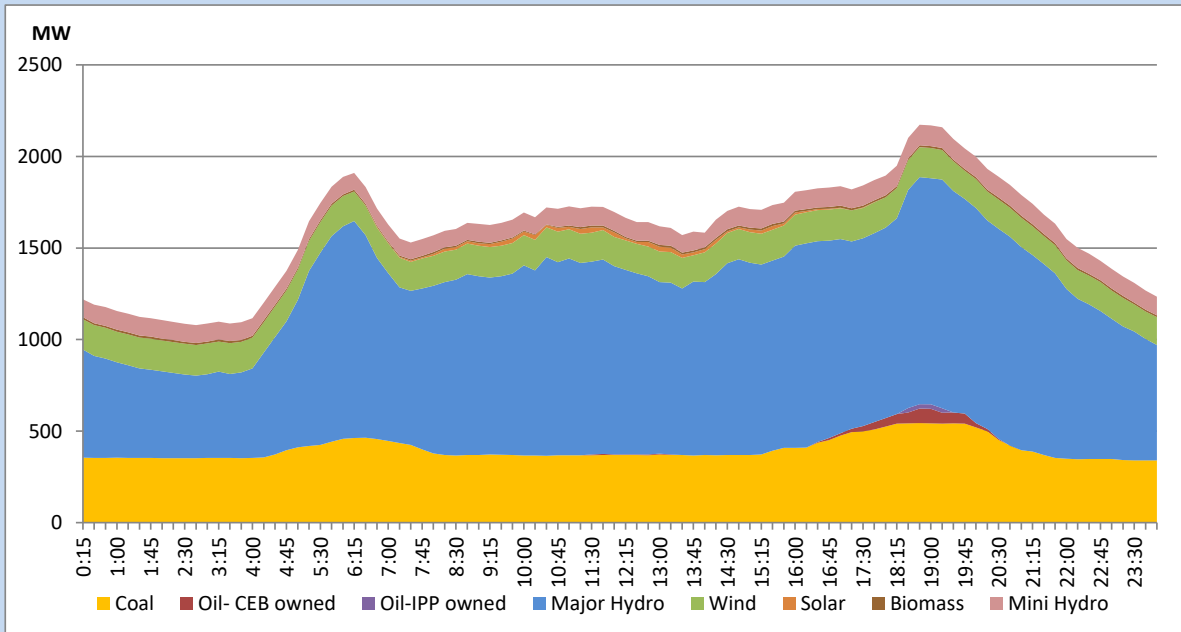


The above figures are excluding contribution from Roof Top Solar, 1MW solar, certain Wind plants and Mini Hydro plants

## Daily Load Curve of the Previous day

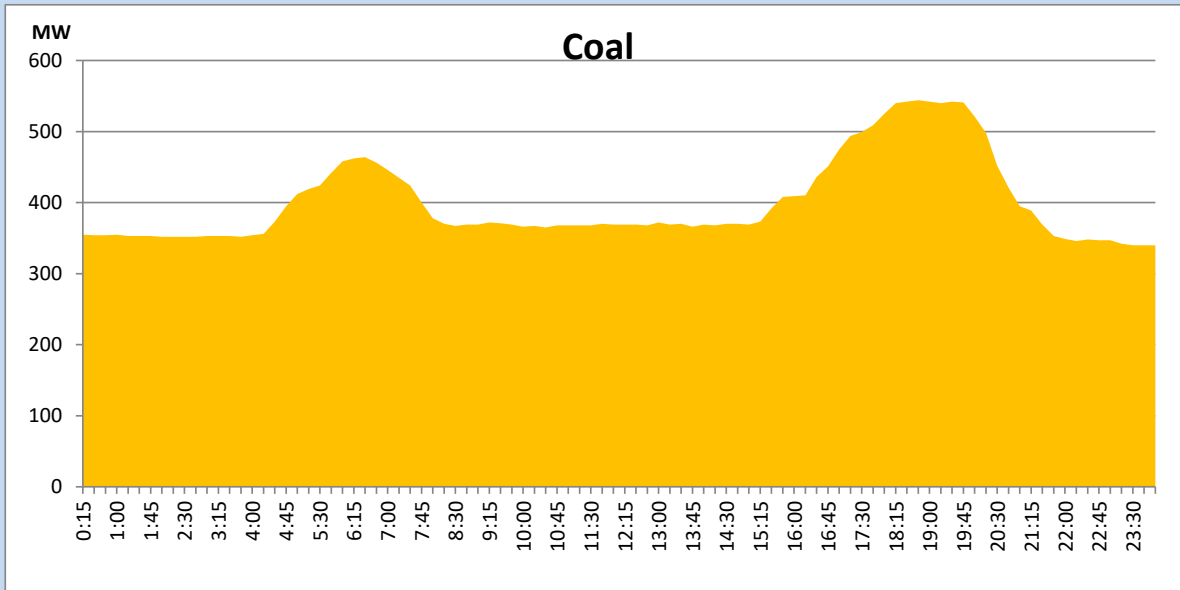
September 7, 2022

Solar and wind data is based on Telemetered Power Stations only



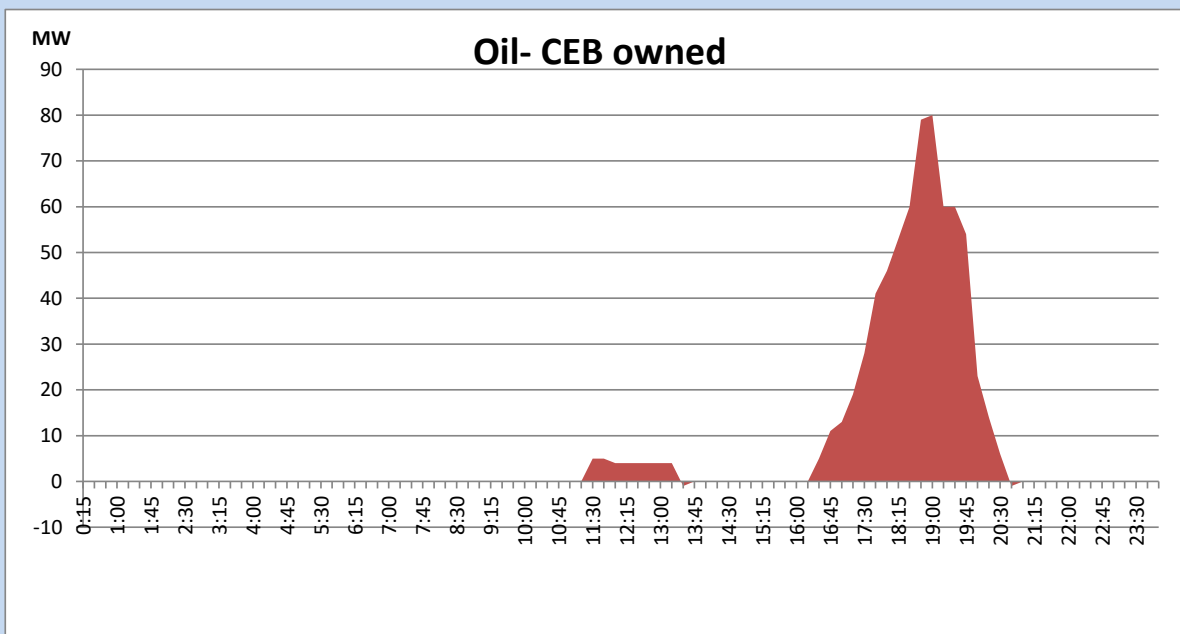
## Coal Generation during the Previous day

September 7, 2022



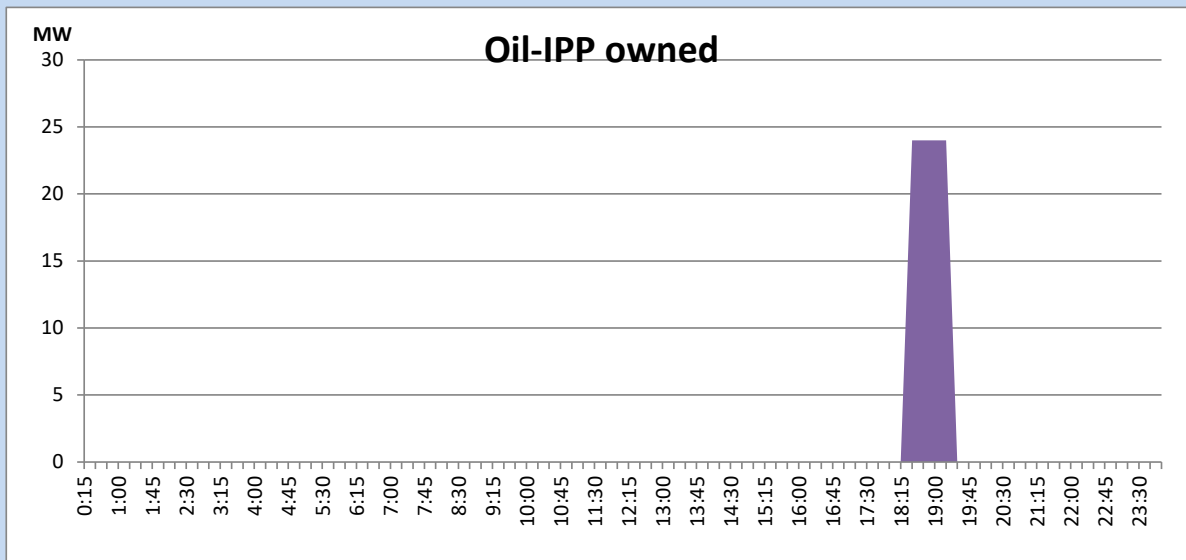
## CEB Oil Plant Generation during the Previous day

September 7, 2022



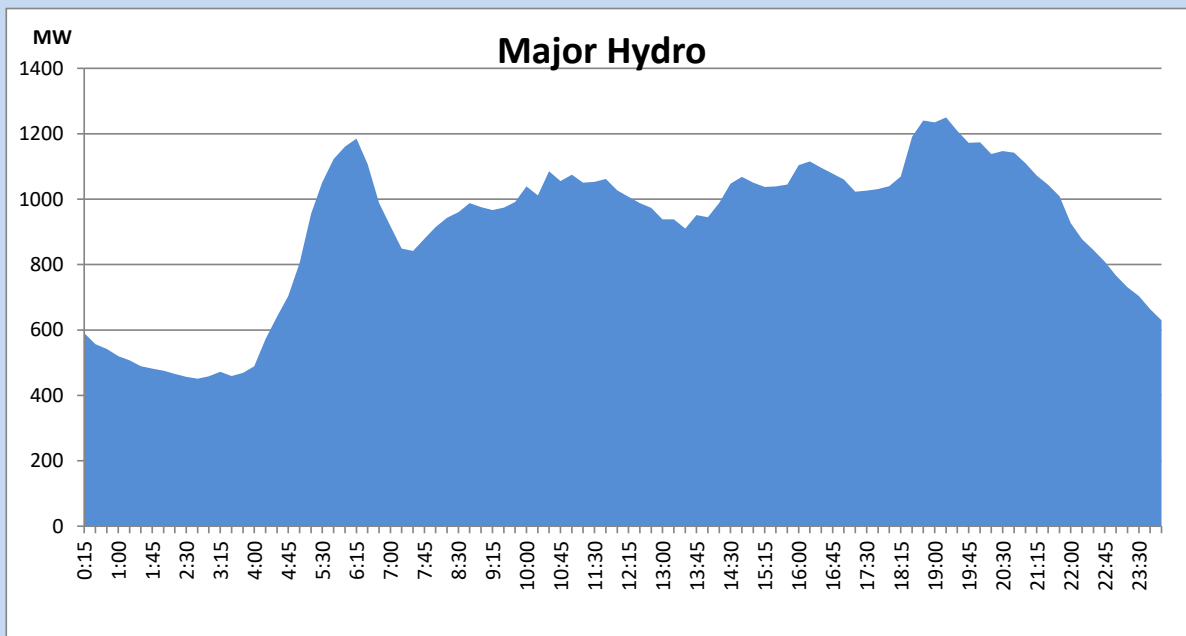
## IPP Oil Plant Generation during the Previous day

September 7, 2022



## Major Hydro Generation during the Previous day

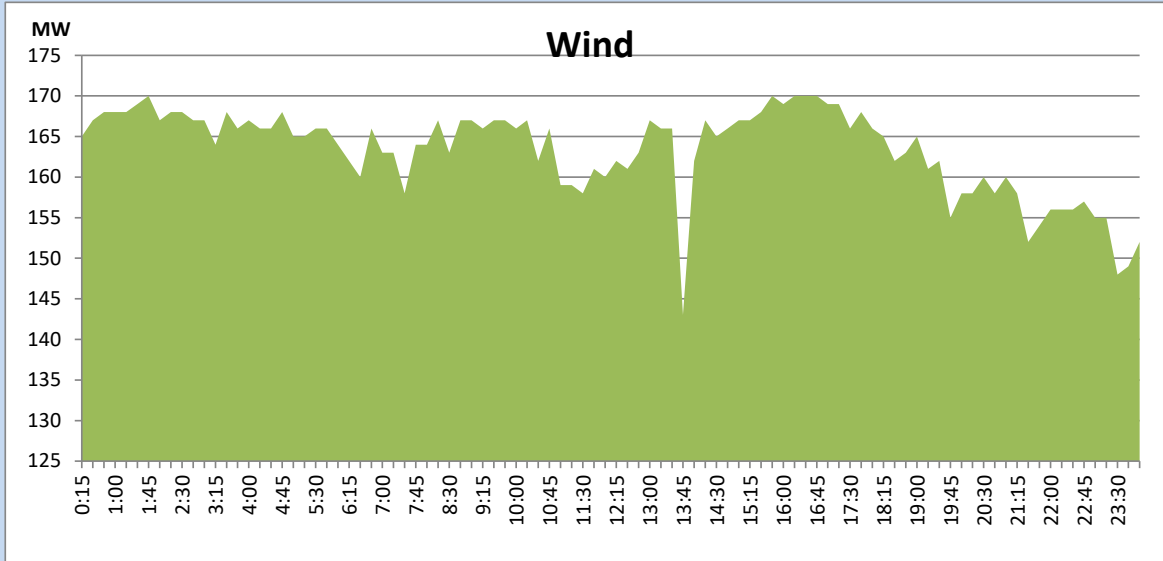
September 7, 2022



## Wind Generation during the Previous day

September 7, 2022

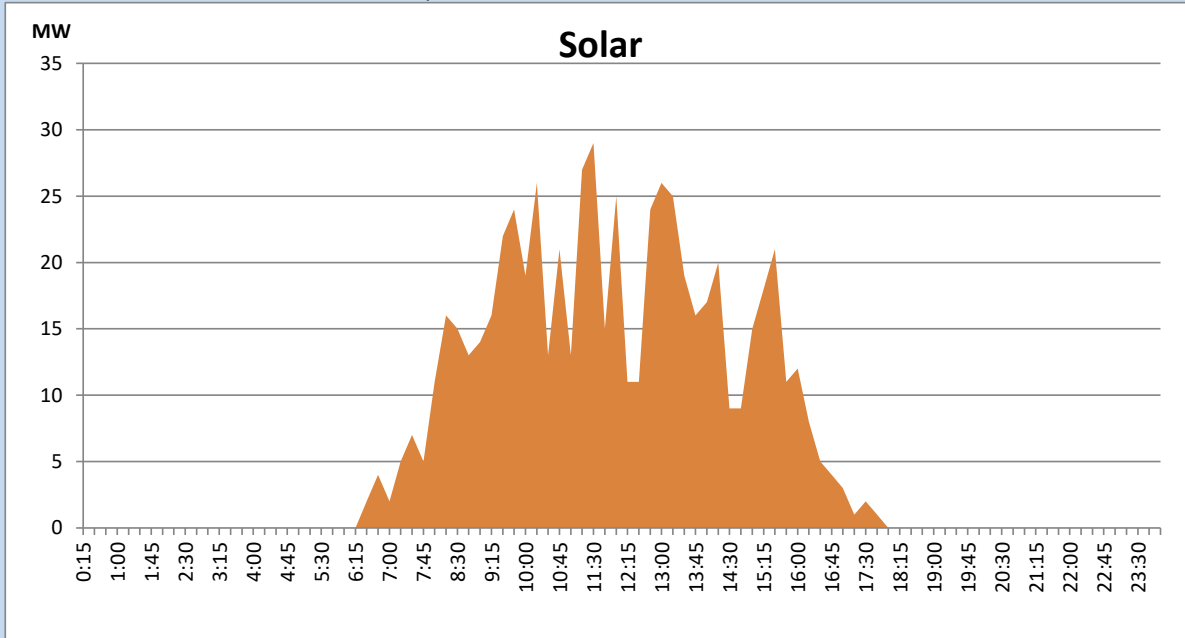
Based on Telemetered Power Stations only



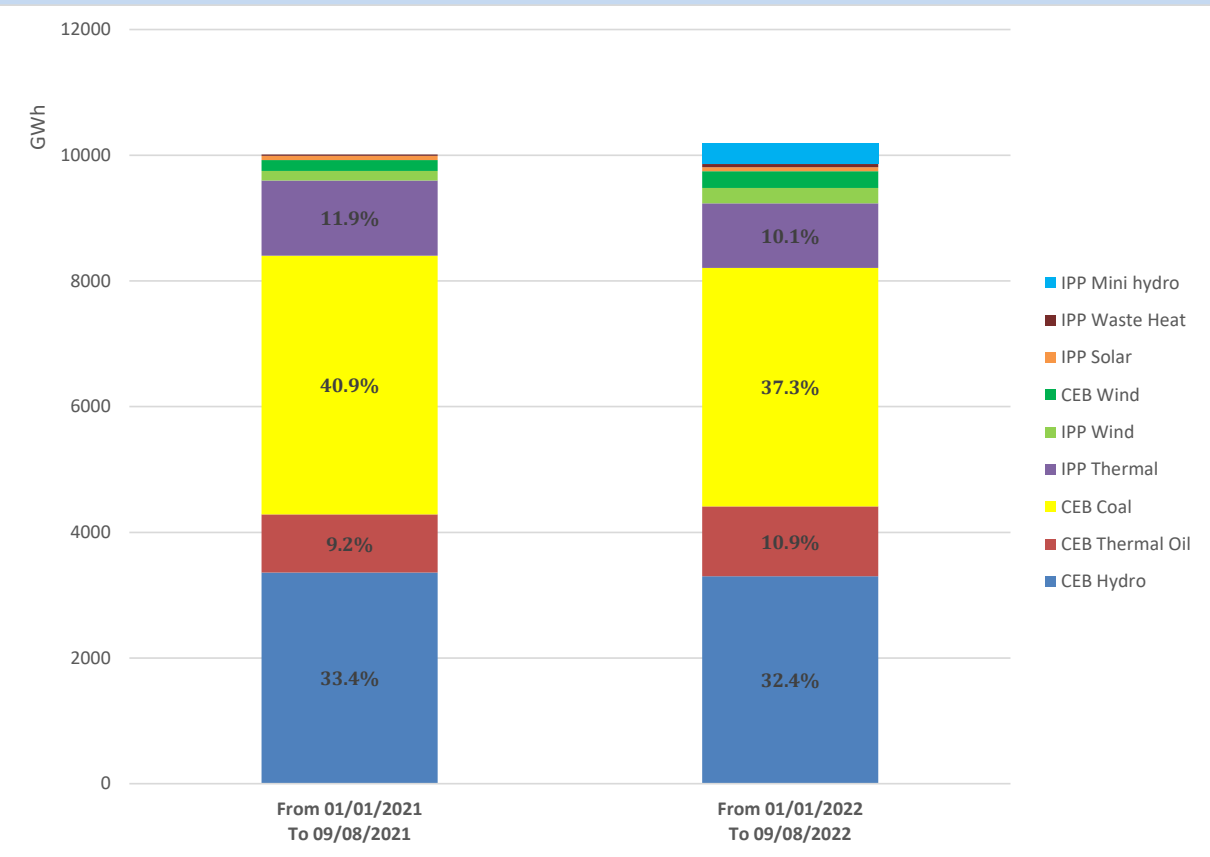
## Solar Generation during the Previous day

September 7, 2022

Based on Telemetered Power Stations only



# Cumulative Dispatch Comparison with Last Year



## Thermal Plant Fuel types

Power Station	Primary Fuel
CEB Thermal	
Sapugaskanda 1	Heavy Fuel
Sapugaskanda 2	Heavy Fuel
Kelanitissa Small Gas Turbines	Auto Diesel
GT 7 - Kelanitissa	Auto Diesel
Kelanitissa CCY	Naphtha or Diesel
Lakvijaya 1	Coal
Lakvijaya 2	Coal
Lakvijaya 3	Coal
Uthuru Janani	Heavy Fuel
Barge CEB	Heavy Fuel

Power Station	Primary Fuel
Private Thermal	
Sojitz - Kelanitissa	Auto Diesel
West Coast	Auto Diesel / Heavy Fuel
ACE Matara	Heavy Fuel
ACE Embilipitiya	Heavy Fuel

## Major Incidents during the day -as reported by CEB morning of

September 9, 2022

- 1) Kukule spilling stopped at 22:52hrs.
- 2) Laxapana, Canyon, and Norton ponds spilling stopped at 5:30hrs, 2:24hrs & 1:00hrs and started again at 8:05hrs, 7:43hrs, & 5:38hrs and stopped at 2:25hrs(09/09/2022), 23:17hrs & 21:35hrs, respectively.
- 3) Horana 132/33kV T/F 01 which was tripped on 07/09/2022, restored at 21:40hrs.