

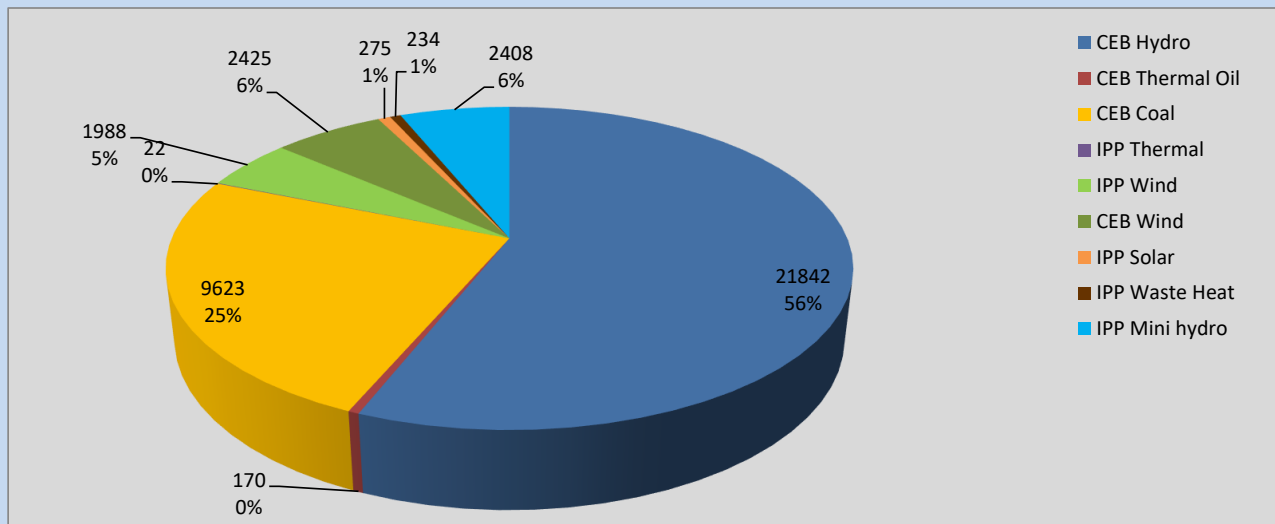
Generation and Reservoirs Statistics

September 7, 2022



PUBLIC UTILITIES COMMISSION OF SRI LANKA

Daily Generation Mix in MWh



Total Generation **38,987 MWh**

Note: Above data is excluding contribution from Roof Top Solar, 1MW Solar and certain Mini Hydro plants

Cumulative Dispatch

Note: Following data is Excluding contribution from Roof Top Solar, 1MW solar and Mini Hydro plants

For Current Month

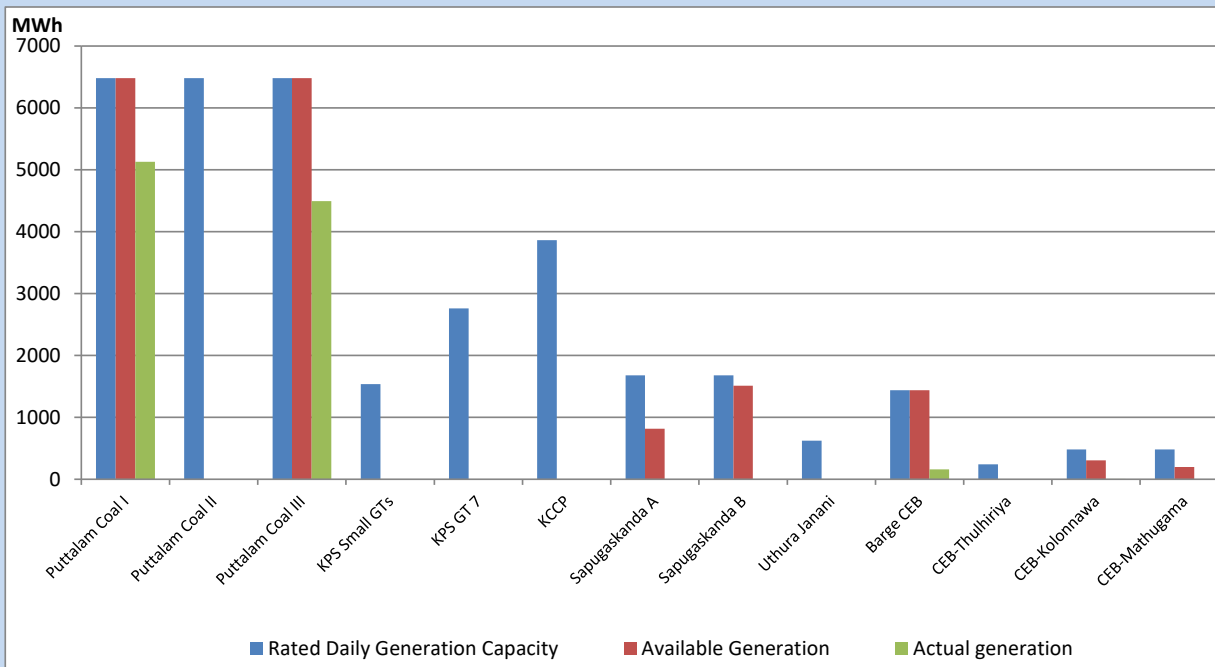
Category	Dispatch (GWh)	Percentage
CEB Hydro	142.25	54.32%
CEB Thermal Oil	1.22	0.47%
CEB Coal	73.60	28.11%
IPP Thermal	0.02	0.01%
SPP Wind	11.05	4.22%
CEB Wind	15.18	5.80%
SPP Solar	1.79	0.68%
SPP Solid Waste	1.57	0.60%
Mini Hydro	15.17	5.79%
Total	261.85	

For Current Year

Category	Dispatch (GWh)	Percentage
CEB Hydro	3,276.0	32.29%
CEB Thermal Oil	1,113.6	10.98%
CEB Coal	3,786.7	37.32%
IPP Thermal	1,026.9	10.12%
SPP Wind	241.9	2.38%
CEB Wind	261.3	2.58%
SPP Solar	64.1	0.63%
SPP Solid Waste	50.7	0.50%
Mini Hydro	325.2	3.21%
Total	10,146.0	

CEB owned Thermal Plant Dispatch

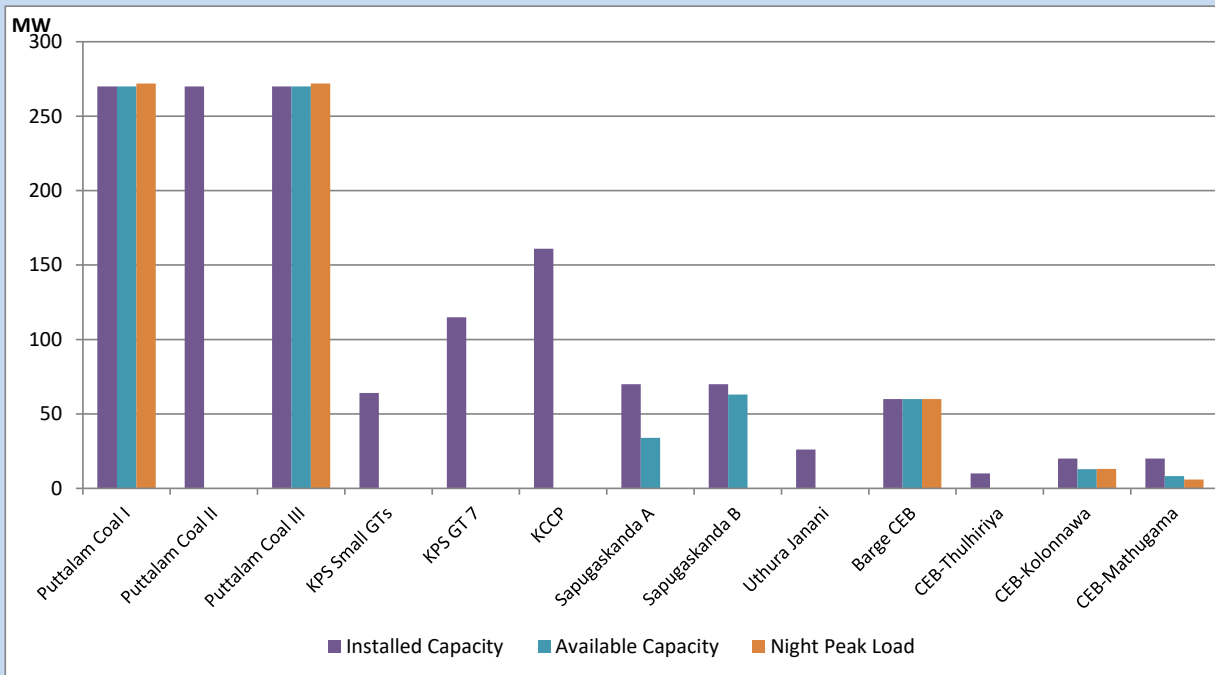
September 7, 2022



Available Generation is estimated based on plant availability at 6.00am on

September 8, 2022

CEB owned Thermal Plant Loading at the Night Peak



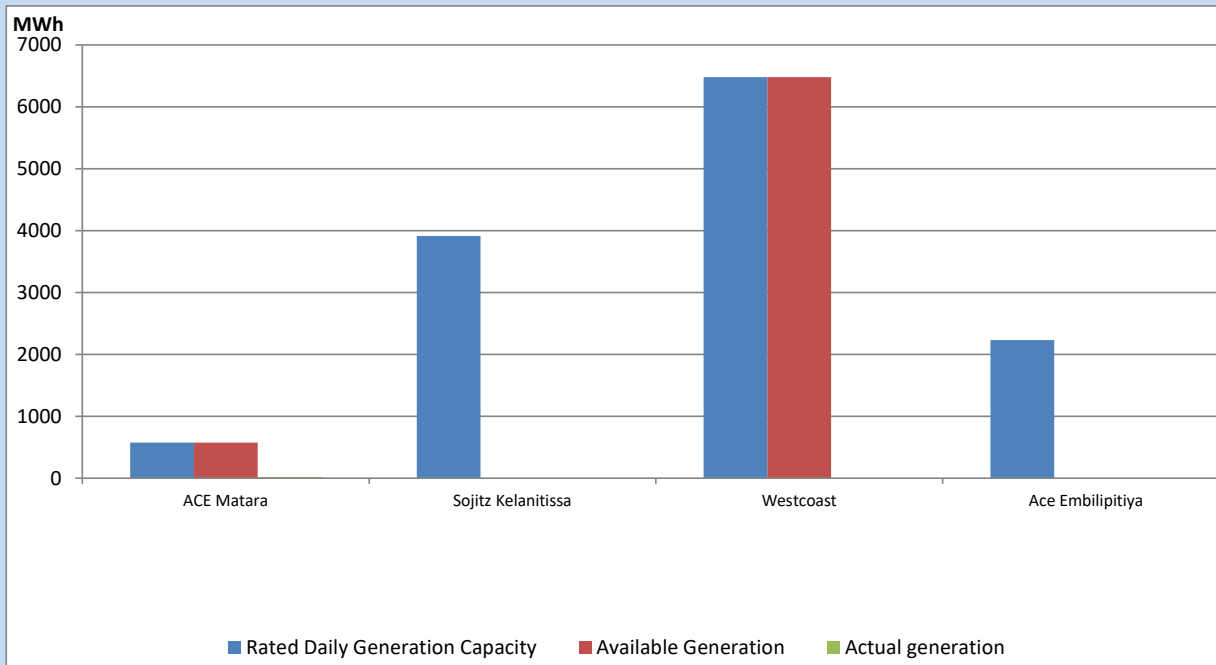
Note- Plant availability is recorded at 6.00 am on

September 8, 2022

IPP owned Thermal Plant Dispatch

September 7, 2022

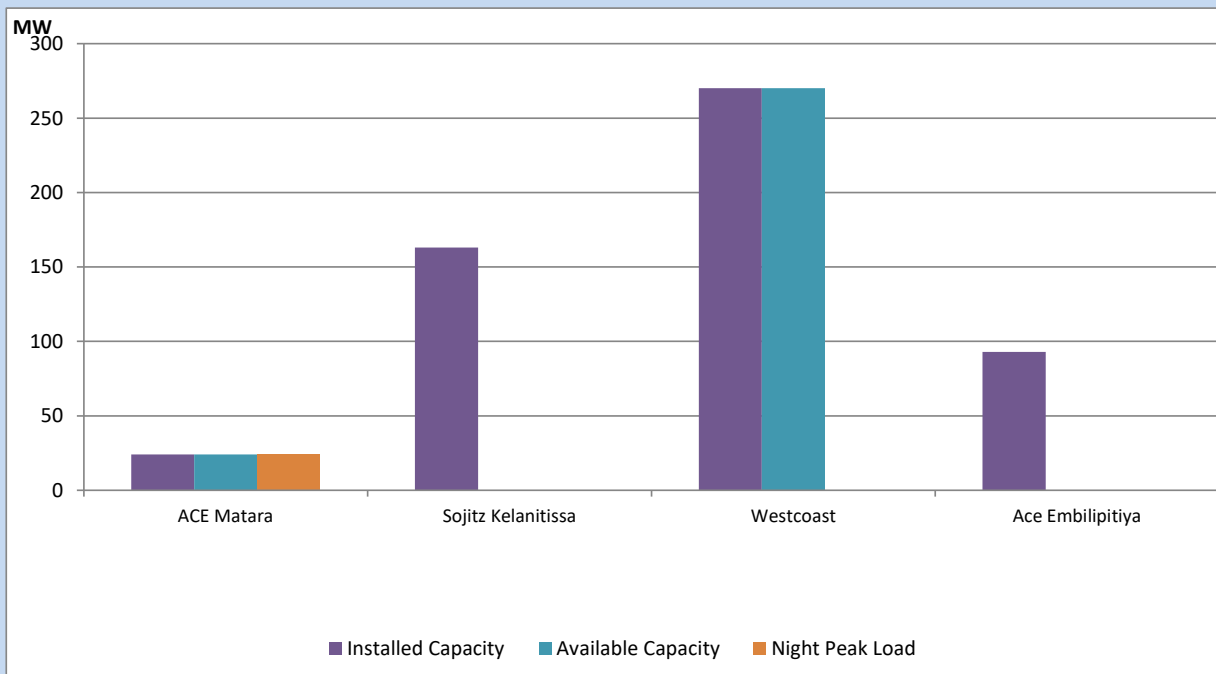
Asia Power, V Power Pallekale, Vpower Galle, V Power Horana, Vpower Hambantota, Vpower Valachchena and Altaqa Mahiyanganaya are not available due to expiration of PPAs



Available Generation is estimated based on plant availability at 6.00am on

September 8, 2022

IPP owned Thermal Plant Loading at the Night Peak

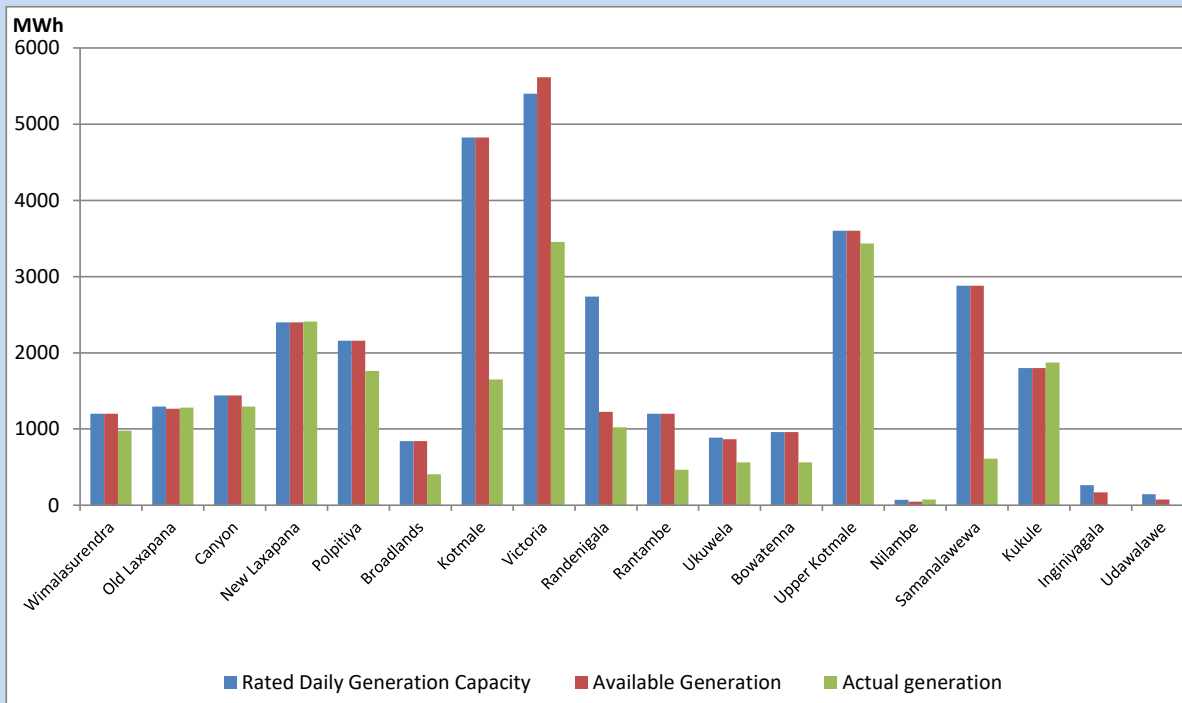


Note- Plant availability is recorded at 6.00 am on

September 8, 2022

Major Hydro Plant Dispatch

September 7, 2022

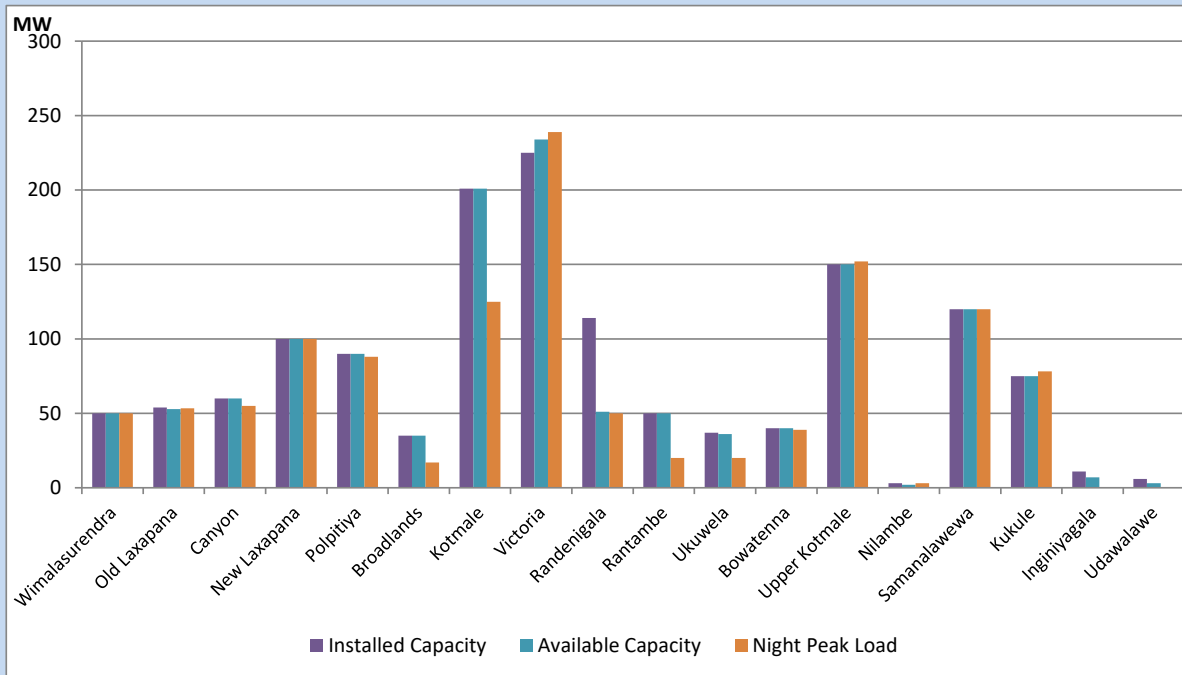


Available Generation is estimated based on plant availability at 6.00am on September 8, 2022
 Broadlands power plant is operating in the Commissioning Stage

September 8, 2022

Major Hydro Plant Loading at Night Peak

September 7, 2022



Note- Plant availability is recorded at 6.00 am on September 8, 2022
 Broadlands power plant is operating in the Commissioning Stage

Summary of Major Plant performance

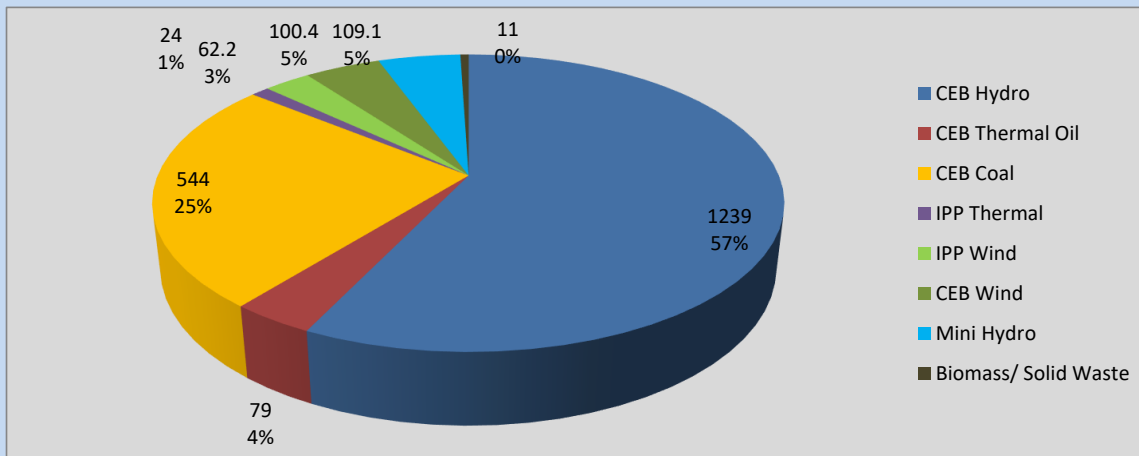
Plant	Installed Capacity	Plant Availability	Night peak Load	Plant Dispatch
	(MW)	(MW)	(MW)	(MWh)
Wimalasurendra	50	50	50	977
Old Laxapana	54	53	53	1,280
Canyon	60	60	55	1,294
New Laxapana	100	100	100	2,410
Polpitiya	90	90	88	1,763
Broadlands	35	35	17	404
Kotmale	201	201	125	1,650
Victoria	225	234	239	3,456
Randenigala	114	51	50	1,022
Rantambe	50	50	20	466
Ukuwela	37	36	20	561
Bowatenna	40	40	39	564
Upper Kotmale	150	150	152	3,433
Nilambe	3	2	3	76
Samanalawewa	120	120	120	613
Kukule	75	75	78	1,873
Inginiyagala	11	7	0	0
Udawalawe	6	3	0	0
Puttalam Coal I	270	270	272	5,130
Puttalam Coal II	270	0	0	0
Puttalam Coal III	270	270	272	4,493
KPS Small GTs	64	0	0	0
KPS GT 7	115	0	0	0
KCCP	161	0	0	0
Sapugaskanda A	70	34	0	0
Sapugaskanda B	70	63	0	0
Uthura Janani	26	0	0	0
Barge CEB	60	60	60	161
CEB-Thulhiriya	10	0	0	0
CEB-Kolonnawa	20	13	13	6
CEB-Mathugama	20	8	6	3
ACE Matara	24	24	24	22
Sojitz Kelanitissa	163	0	0	0
West Coast	270	270	0	0
ACE Embilipitiya	93	0	0	0
Total	3,397	2,369	2,139	38,987

Plant availability is the availability recorded at 6 am on

September 8, 2022

Contribution to the Night Peak in MW

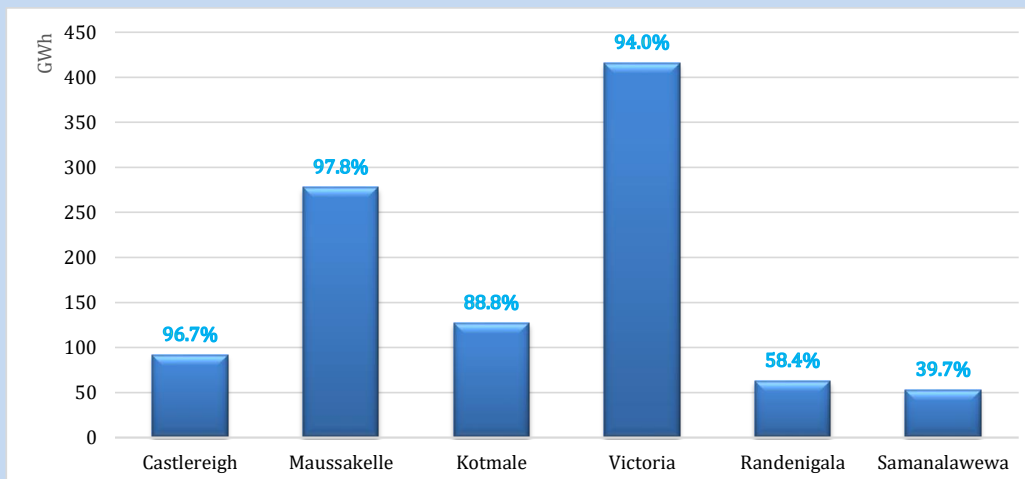
September 7, 2022



Night Peak*	2,169.1 MW
Day Peak	1,805.1 MW
Minimum Demand	1,076.6 MW

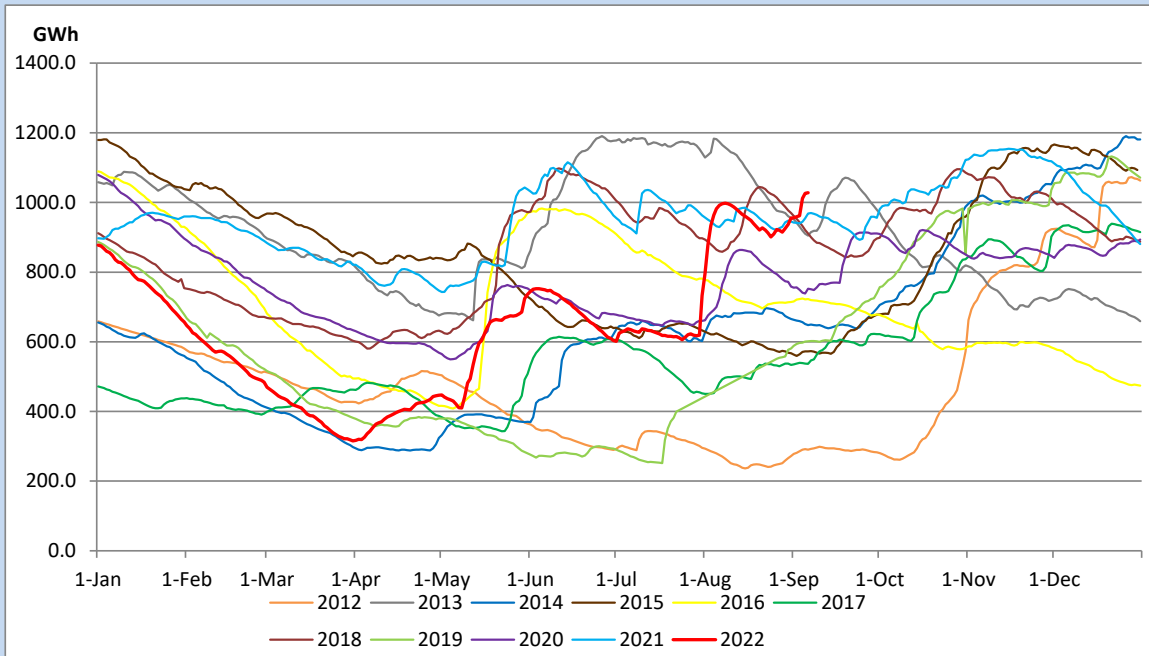
Above figures are excluding contribution from Roof Top Solar, 1MW solar, certain Wind plants and Mini Hydro plants

Reservoir Levels - as at 06.00 Hr on September 8, 2022

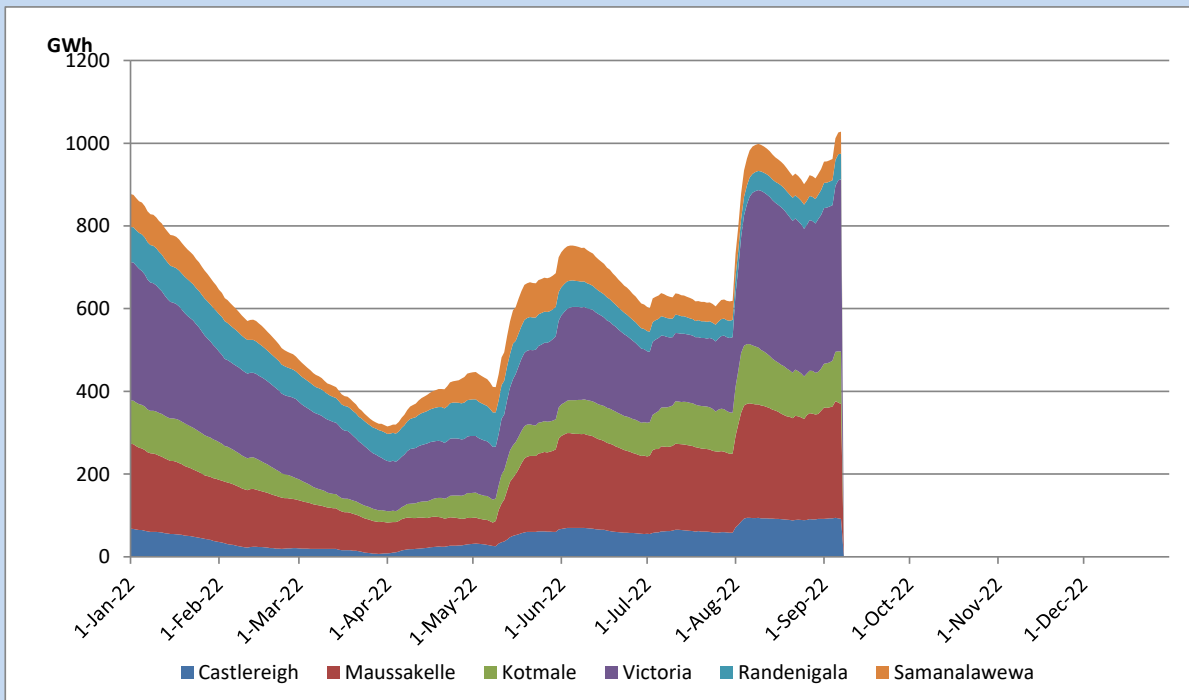


Total Reservoir Level	1027.9 GWh
% of Total capacity	85.3%

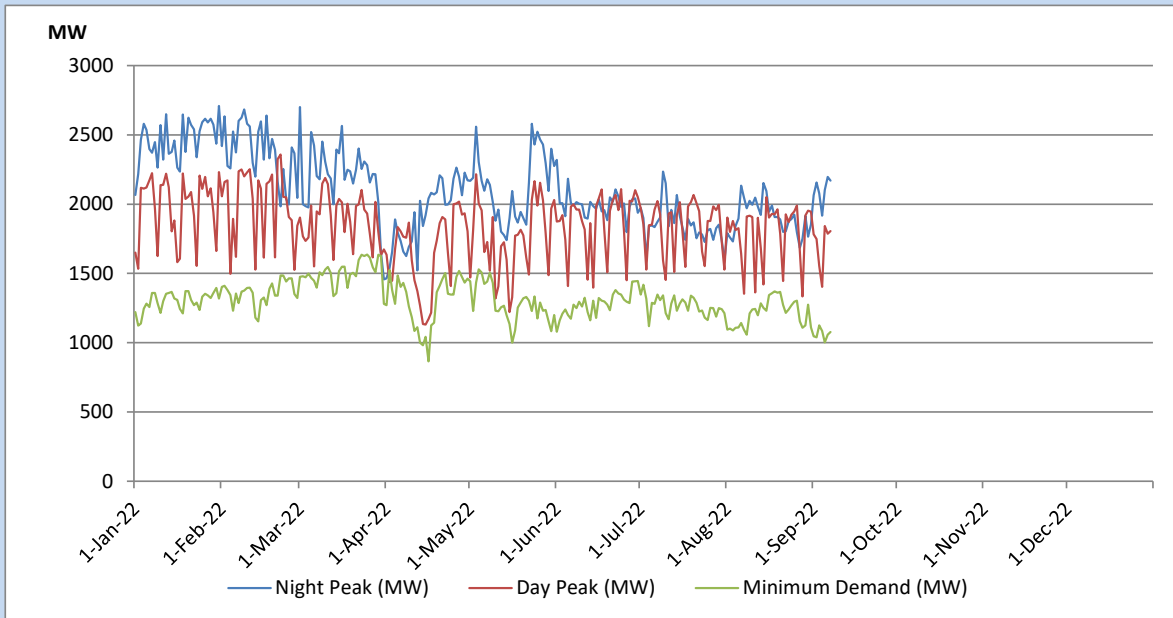
Comparison of Total Reservoir Storage Levels with Past Years



Variation of Major Hydro Reservoir Levels in the current year (GWh)



Variation of Demand during the current year

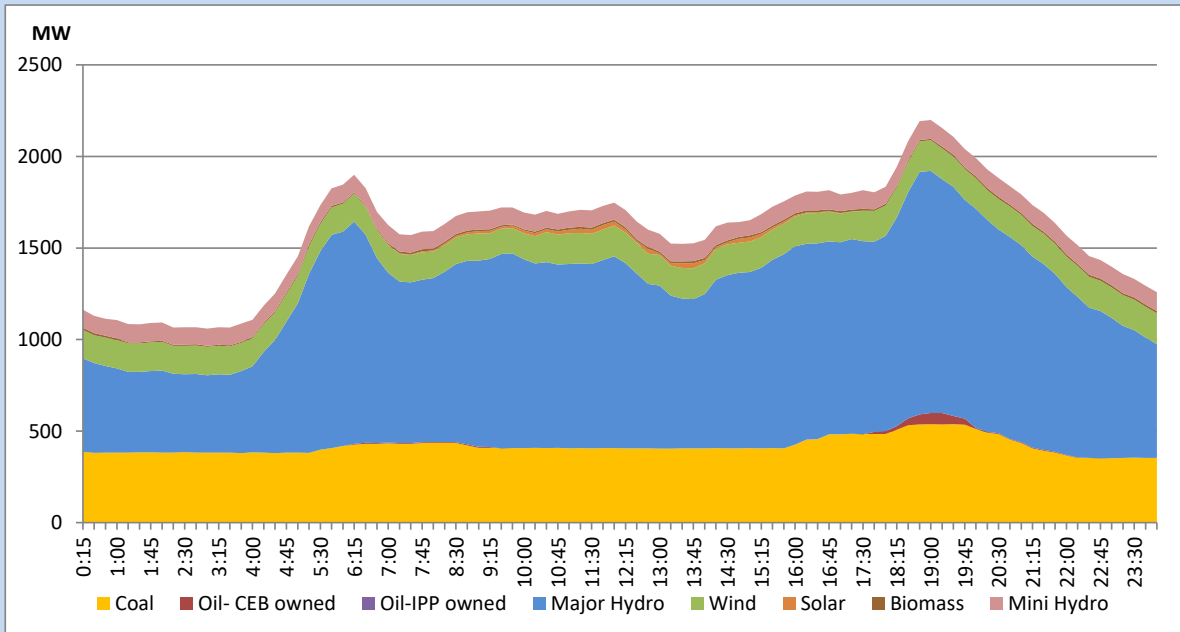


The above figures are excluding contribution from Roof Top Solar, 1MW solar, certain Wind plants and Mini Hydro plants

Daily Load Curve of the Previous day

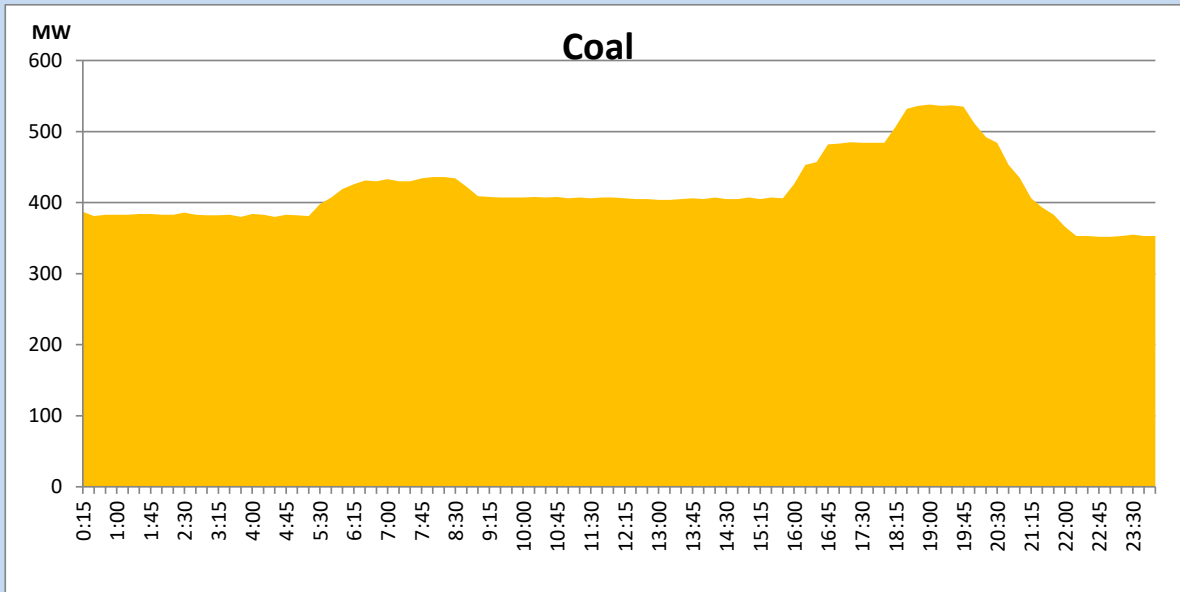
September 6, 2022

Solar and wind data is based on Telemetered Power Stations only



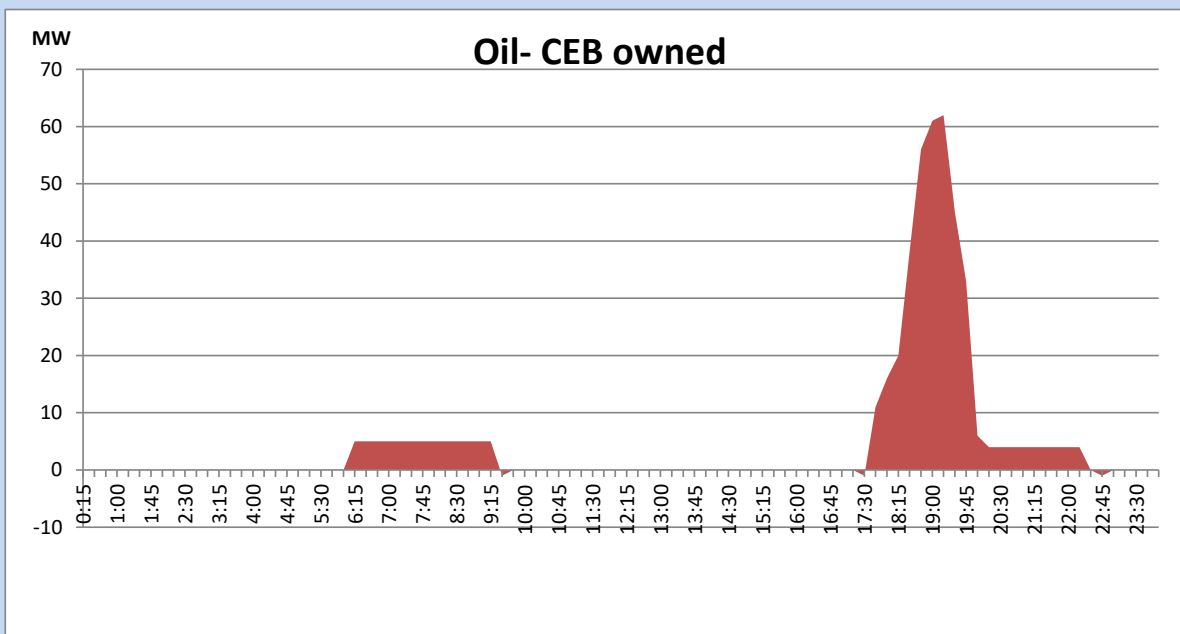
Coal Generation during the Previous day

September 6, 2022



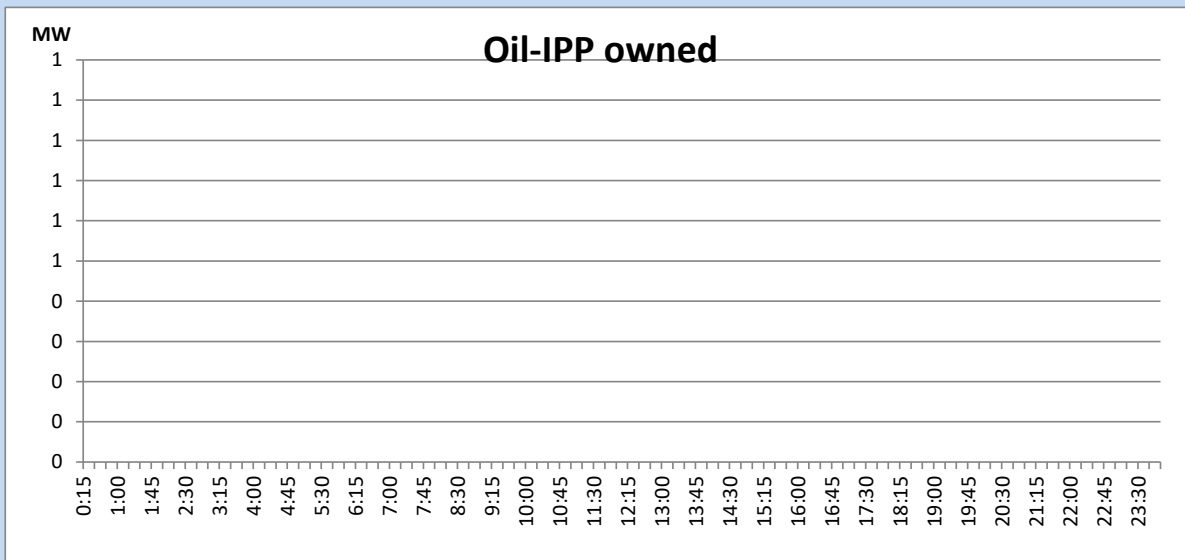
CEB Oil Plant Generation during the Previous day

September 6, 2022



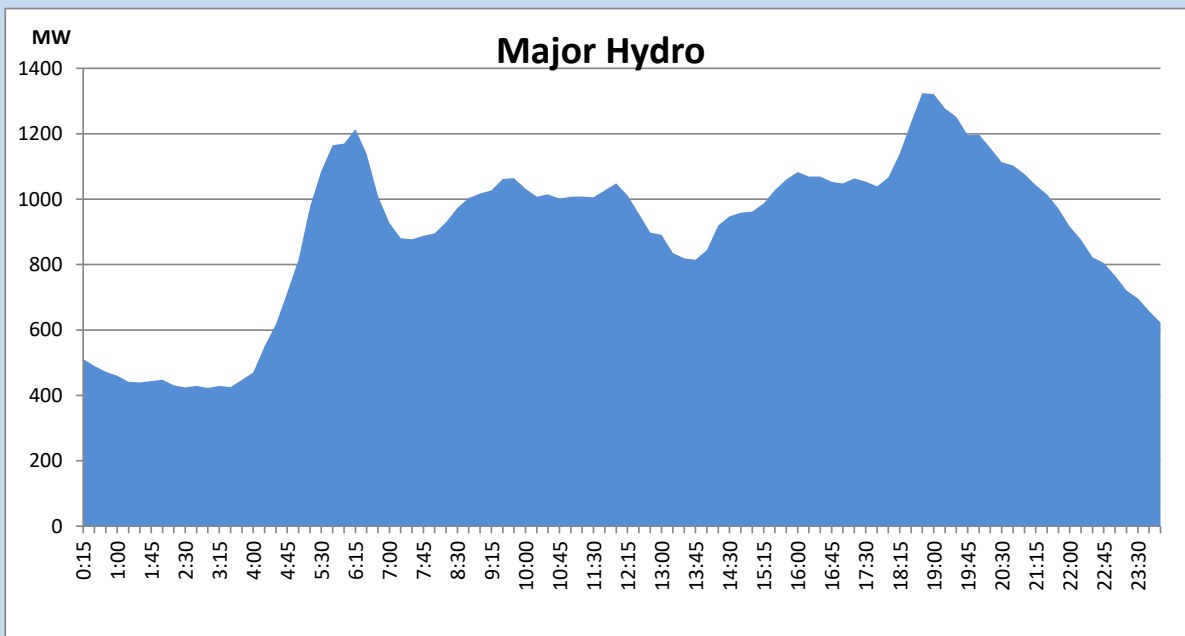
IPP Oil Plant Generation during the Previous day

September 6, 2022



Major Hydro Generation during the Previous day

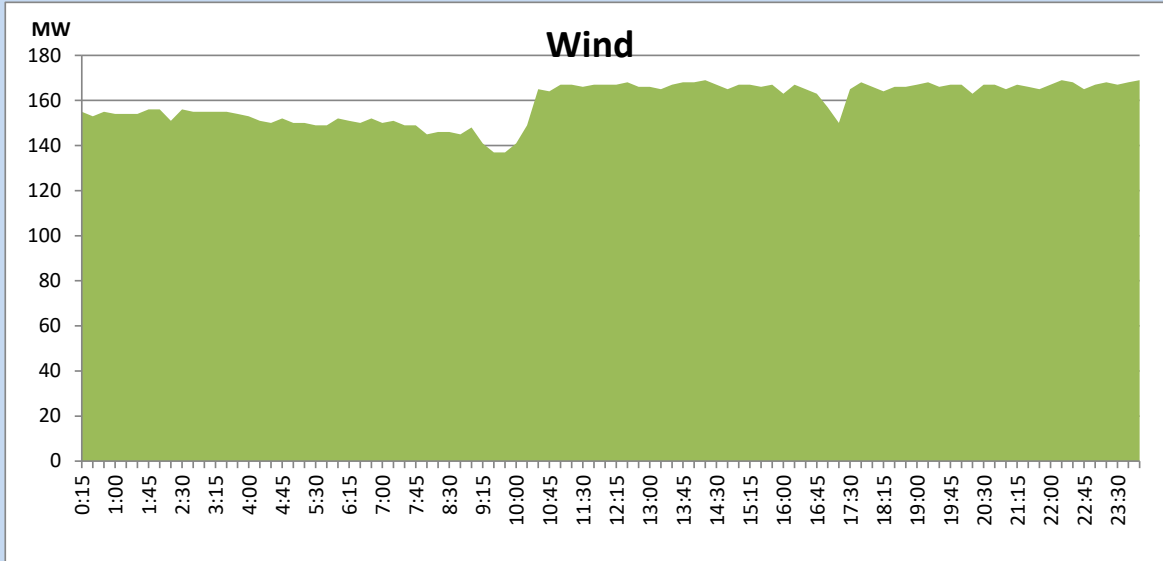
September 6, 2022



Wind Generation during the Previous day

September 6, 2022

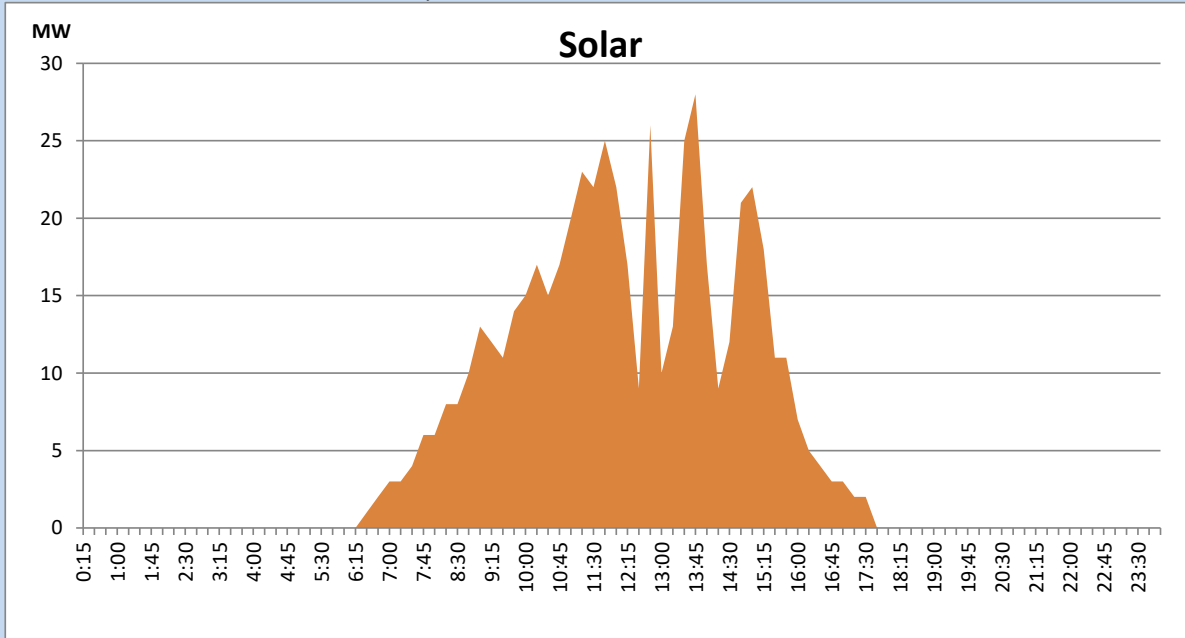
Based on Telemetered Power Stations only



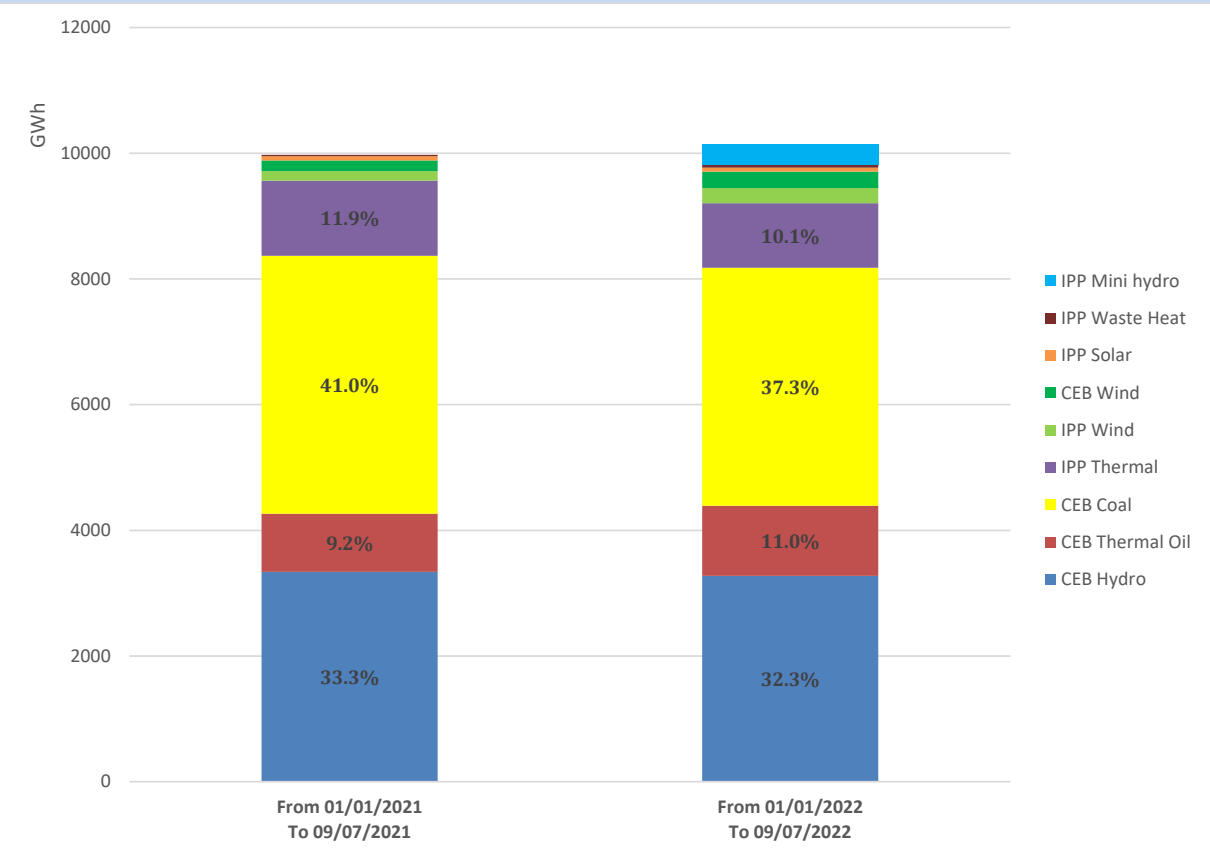
Solar Generation during the Previous day

September 6, 2022

Based on Telemetered Power Stations only



Cumulative Dispatch Comparison with Last Year



Thermal Plant Fuel types

Power Station	Primary Fuel
CEB Thermal	
Sapugaskanda 1	Heavy Fuel
Sapugaskanda 2	Heavy Fuel
Kelanitissa Small Gas Turbines	Auto Diesel
GT 7 - Kelanitissa	Auto Diesel
Kelanitissa CCY	Naphtha or Diesel
Lakvijaya 1	Coal
Lakvijaya 2	Coal
Lakvijaya 3	Coal
Uthuru Janani	Heavy Fuel
Barge CEB	Heavy Fuel

Power Station	Primary Fuel
Private Thermal	
Sojitz - Kelanitissa	Auto Diesel
West Coast	Auto Diesel / Heavy Fuel
ACE Matara	Heavy Fuel
ACE Embilipitiya	Heavy Fuel

Major Incidents during the day -as reported by CEB morning of

September 8, 2022

- 1) Kukule spilling continues to the present hour.
- 2) Norton pond spilling stopped at 1:00 hrs(08/09/2022) and started again at 5:38hrs(08/09/2022).
- 3) Canyon pond spilling stopped at 2:24 hrs(08/09/2022) and Laxapana pond spilling stopped at 5:30 hrs(08/09/2022).
- 4) Katunayaka-Bolawatta-New Chilaw cct tripped at 10:06 hrs due to the operation of distance protection. The cct was normalized by 15:10 hrs.
- 5) Horana 132/33kV T/F 01 & 03 tripped at 10:10 hrs while releasing the T/F 02 for maintenance work causing all 33kV feeders of the GSS to be dead. The T/Fs 03 & 02 were normalized at 11:31 hrs and 17:29 hrs respectively and the T/F 01 is yet to normalize.