

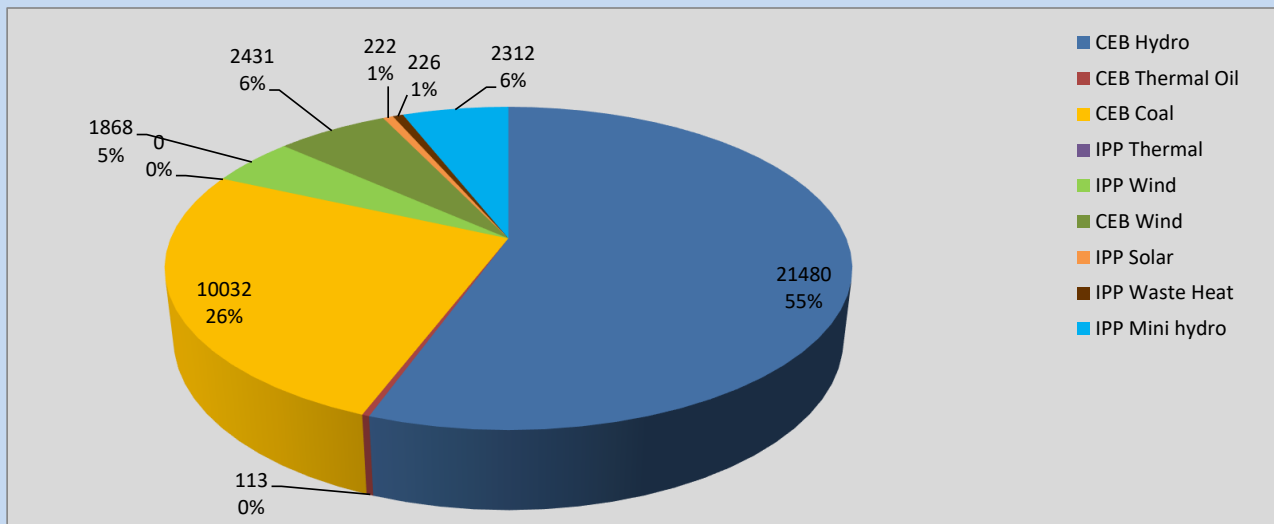
Generation and Reservoirs Statistics

September 6, 2022



PUBLIC UTILITIES COMMISSION OF SRI LANKA

Daily Generation Mix in MWh



Total Generation **38,684 MWh**

Note: Above data is excluding contribution from Roof Top Solar, 1MW Solar and certain Mini Hydro plants

Cumulative Dispatch

Note: Following data is Excluding contribution from Roof Top Solar, 1MW solar and Mini Hydro plants

For Current Month

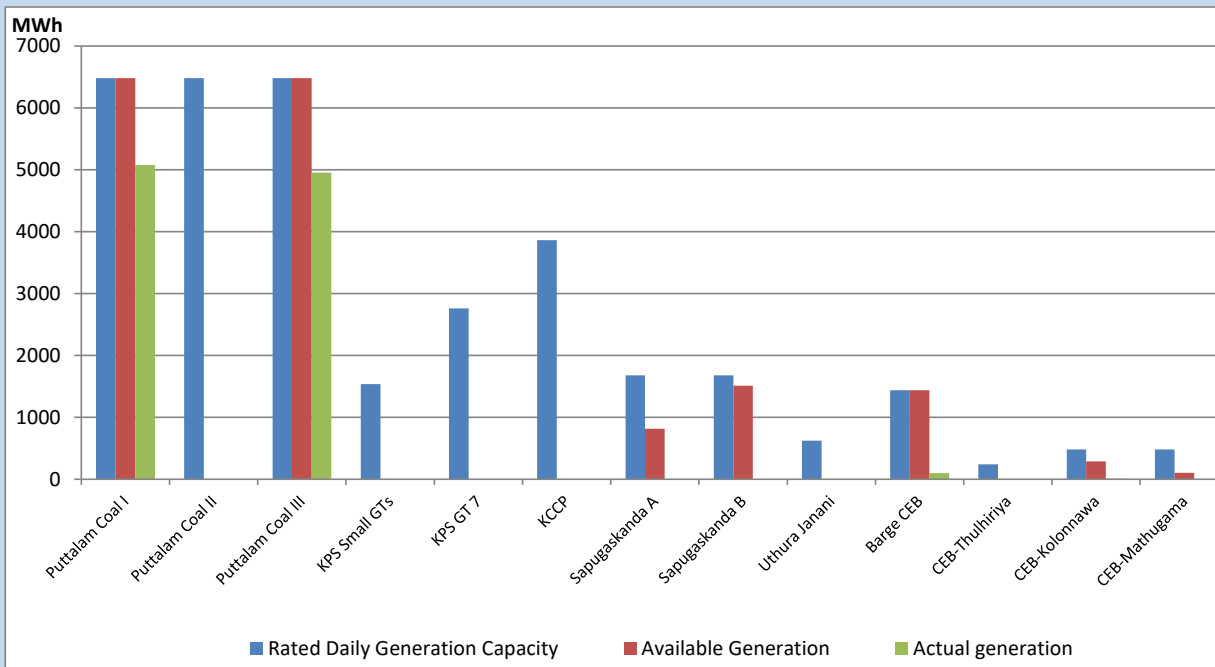
Category	Dispatch (GWh)	Percentage
CEB Hydro	120.40	54.02%
CEB Thermal Oil	1.05	0.47%
CEB Coal	63.98	28.71%
IPP Thermal	0.00	0.00%
SPP Wind	9.06	4.07%
CEB Wind	12.75	5.72%
SPP Solar	1.52	0.68%
SPP Solid Waste	1.34	0.60%
Mini Hydro	12.76	5.73%
Total	222.86	

For Current Year

Category	Dispatch (GWh)	Percentage
CEB Hydro	3,254.1	32.20%
CEB Thermal Oil	1,113.4	11.02%
CEB Coal	3,777.1	37.37%
IPP Thermal	1,026.9	10.16%
SPP Wind	239.9	2.37%
CEB Wind	258.8	2.56%
SPP Solar	63.8	0.63%
SPP Solid Waste	50.5	0.50%
Mini Hydro	322.8	3.19%
Total	10,107.0	

CEB owned Thermal Plant Dispatch

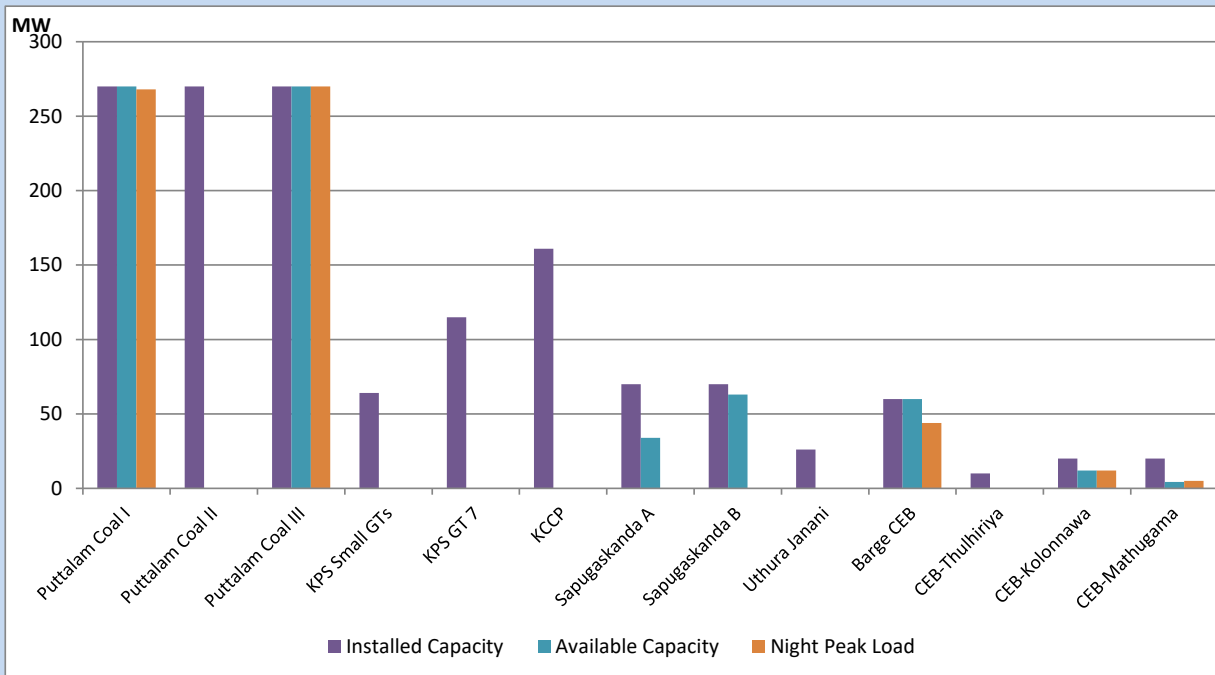
September 6, 2022



Available Generation is estimated based on plant availability at 6.00am on

September 7, 2022

CEB owned Thermal Plant Loading at the Night Peak



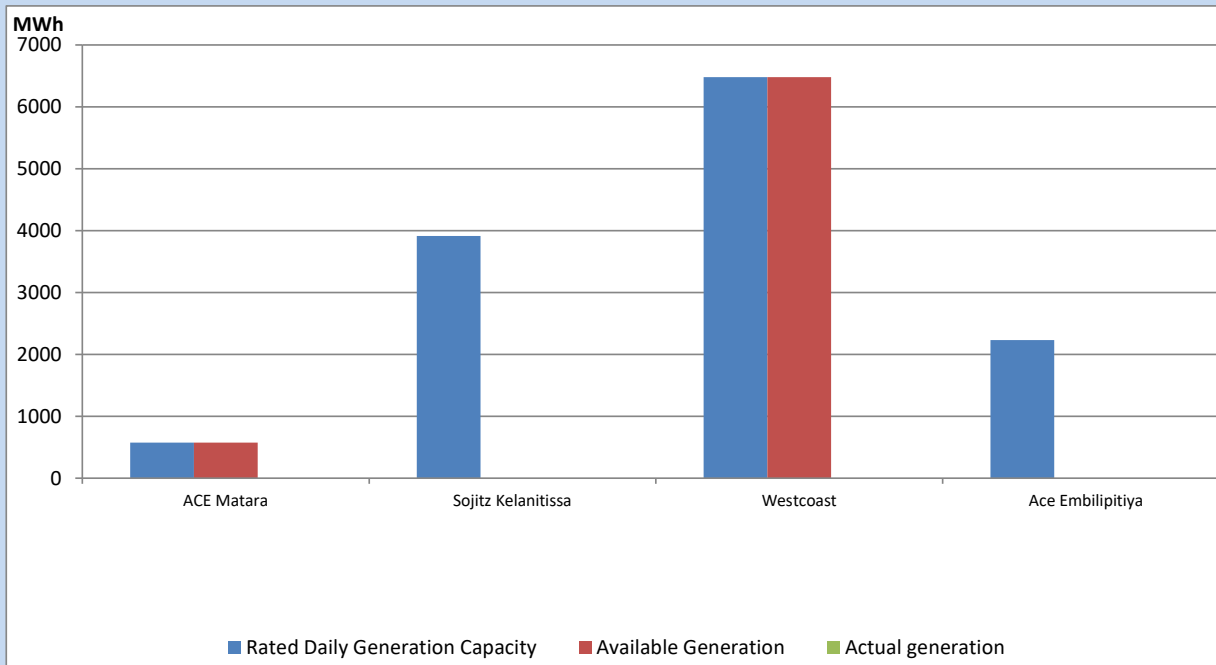
Note- Plant availability is recorded at 6.00 am on

September 7, 2022

IPP owned Thermal Plant Dispatch

September 6, 2022

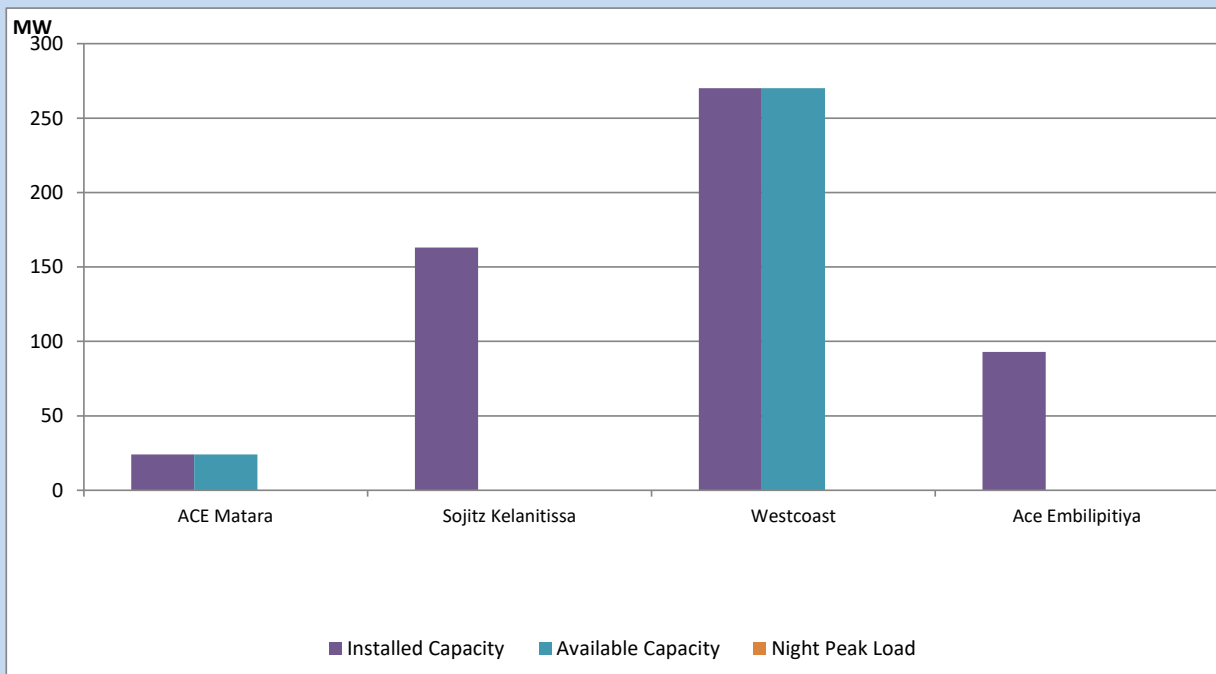
Asia Power, V Power Pallekale, Vpower Galle, V Power Horana, Vpower Hambantota, Vpower Valachchena and Altaqa Mahiyanganaya are not available due to expiration of PPAs



Available Generation is estimated based on plant availability at 6.00am on

September 7, 2022

IPP owned Thermal Plant Loading at the Night Peak

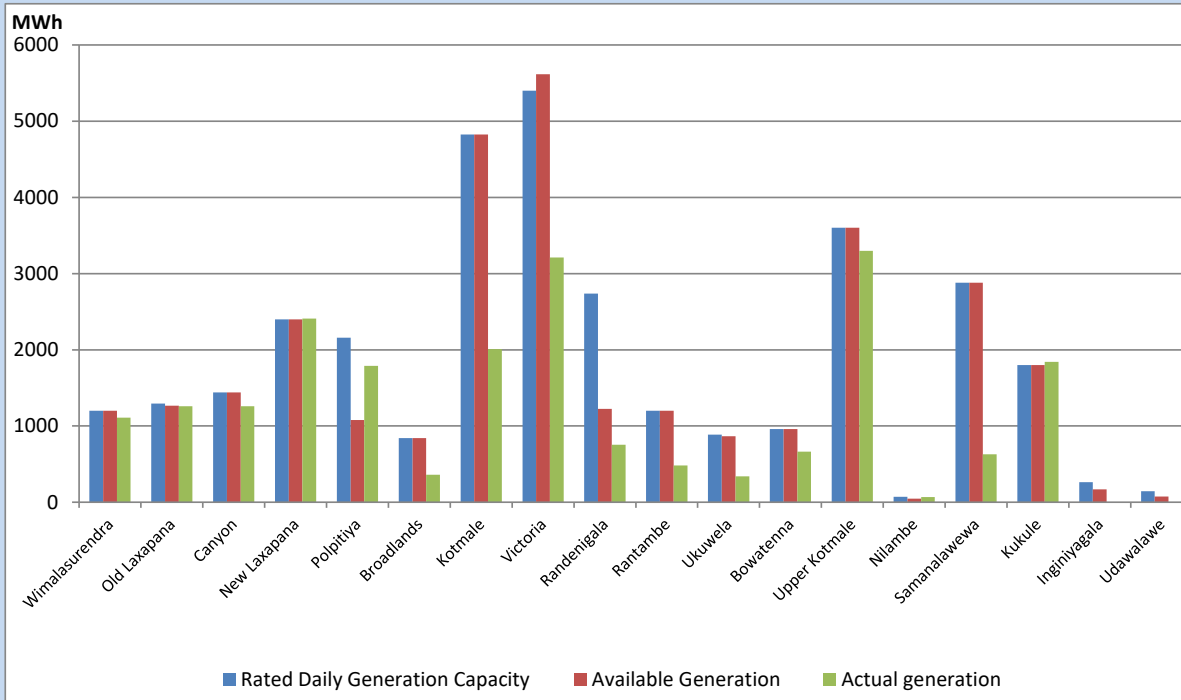


Note- Plant availability is recorded at 6.00 am on

September 7, 2022

Major Hydro Plant Dispatch

September 6, 2022

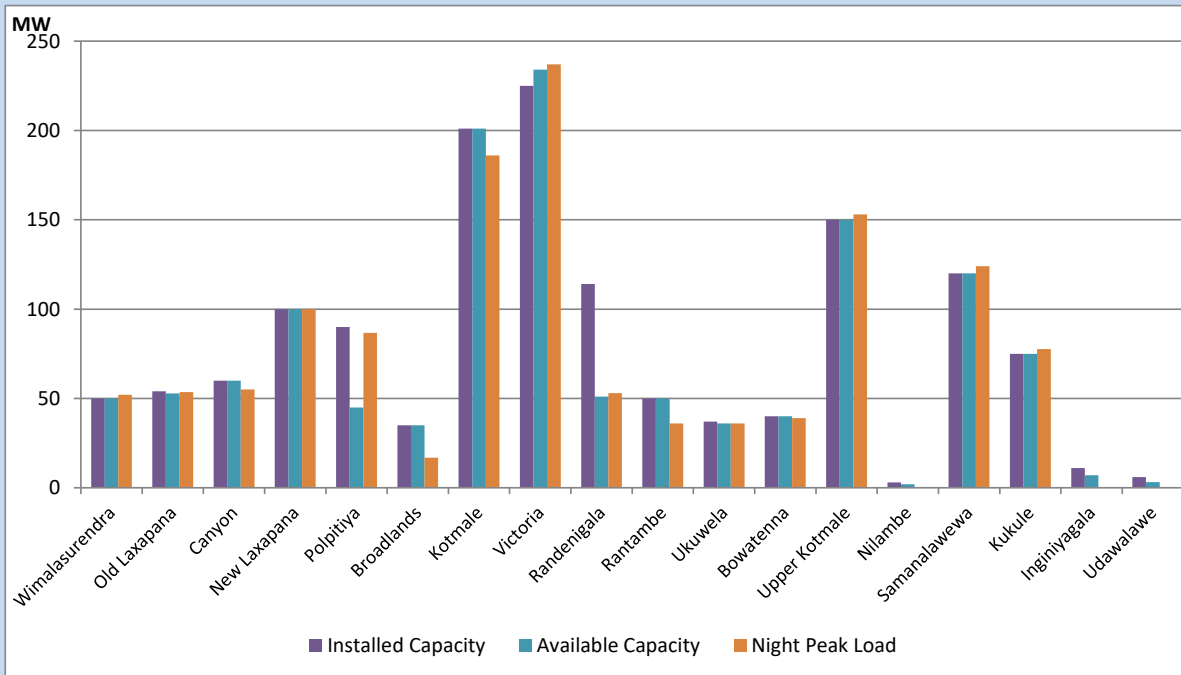


Available Generation is estimated based on plant availability at 6.00am on September 7, 2022
 Broadlands power plant is operating in the Commissioning Stage

September 7, 2022

Major Hydro Plant Loading at Night Peak

September 6, 2022



Note- Plant availability is recorded at 6.00 am on September 7, 2022
 Broadlands power plant is operating in the Commissioning Stage

Summary of Major Plant performance

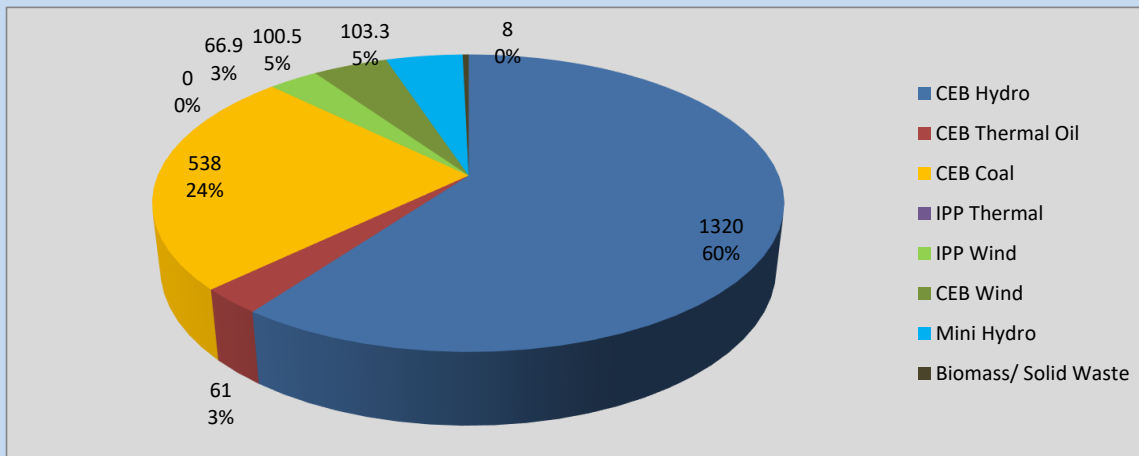
Plant	Installed Capacity	Plant Availability	Night peak Load	Plant Dispatch
	(MW)	(MW)	(MW)	(MWh)
Wimalasurendra	50	50	52	1,110
Old Laxapana	54	53	54	1,261
Canyon	60	60	55	1,258
New Laxapana	100	100	100	2,408
Polpitiya	90	45	87	1,788
Broadlands	35	35	17	361
Kotmale	201	201	186	2,010
Victoria	225	234	237	3,211
Randenigala	114	51	53	753
Rantambe	50	50	36	482
Ukuwela	37	36	36	338
Bowatenna	40	40	39	664
Upper Kotmale	150	150	153	3,299
Nilambe	3	2	0	67
Samanalawewa	120	120	124	630
Kukule	75	75	78	1,840
Inginiyagala	11	7	0	0
Udawalawe	6	3	0	0
Puttalam Coal I	270	270	268	5,078
Puttalam Coal II	270	0	0	0
Puttalam Coal III	270	270	270	4,954
KPS Small GTs	64	0	0	0
KPS GT 7	115	0	0	0
KCCP	161	0	0	0
Sapugaskanda A	70	34	0	0
Sapugaskanda B	70	63	0	0
Uthura Janani	26	0	0	0
Barge CEB	60	60	44	101
CEB-Thulhiriya	10	0	0	0
CEB-Kolonnawa	20	12	12	8
CEB-Mathugama	20	4	5	4
ACE Matara	24	24	0	0
Sojitz Kelanitissa	163	0	0	0
West Coast	270	270	0	0
ACE Embilipitiya	93	0	0	0
Total	3,397	2,319	2,183	38,684

Plant availability is the availability recorded at 6 am on

September 7, 2022

Contribution to the Night Peak in MW

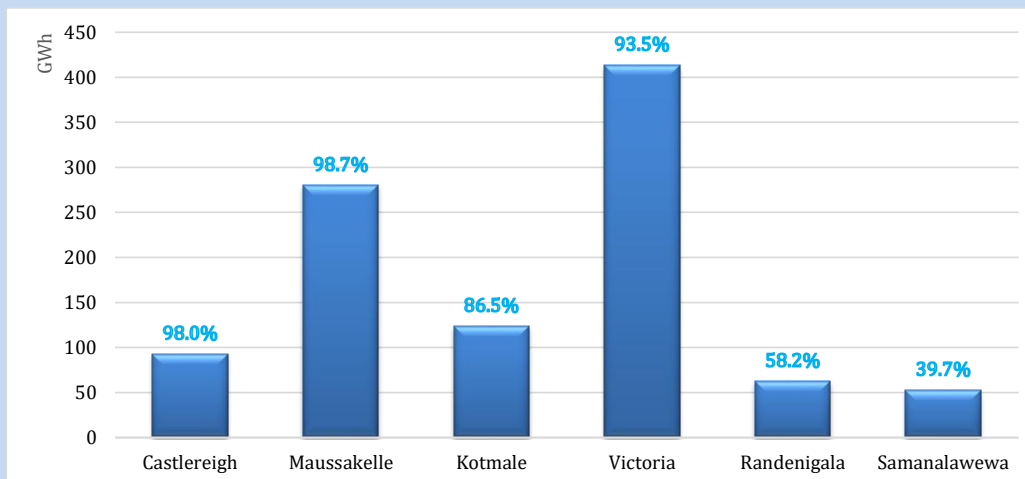
September 6, 2022



Night Peak*	2,197.4 MW
Day Peak	1,786.2 MW
Minimum Demand	1,057.4 MW

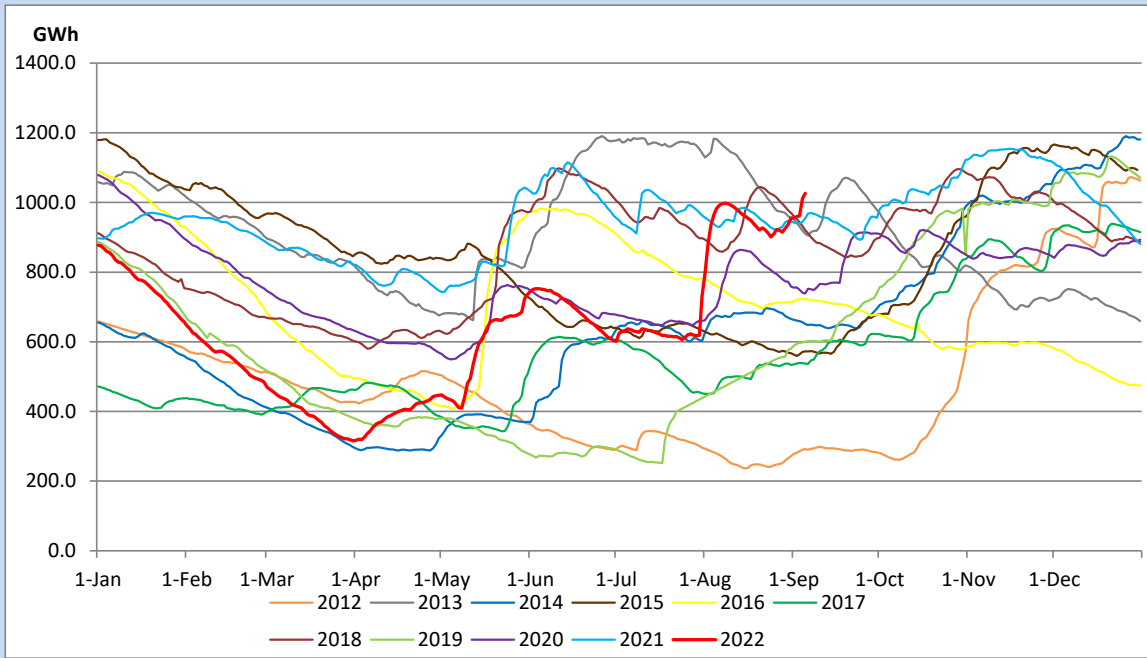
Above figures are excluding contribution from Roof Top Solar, 1MW solar, certain Wind plants and Mini Hydro plants

Reservoir Levels - as at 06.00 Hr on September 7, 2022

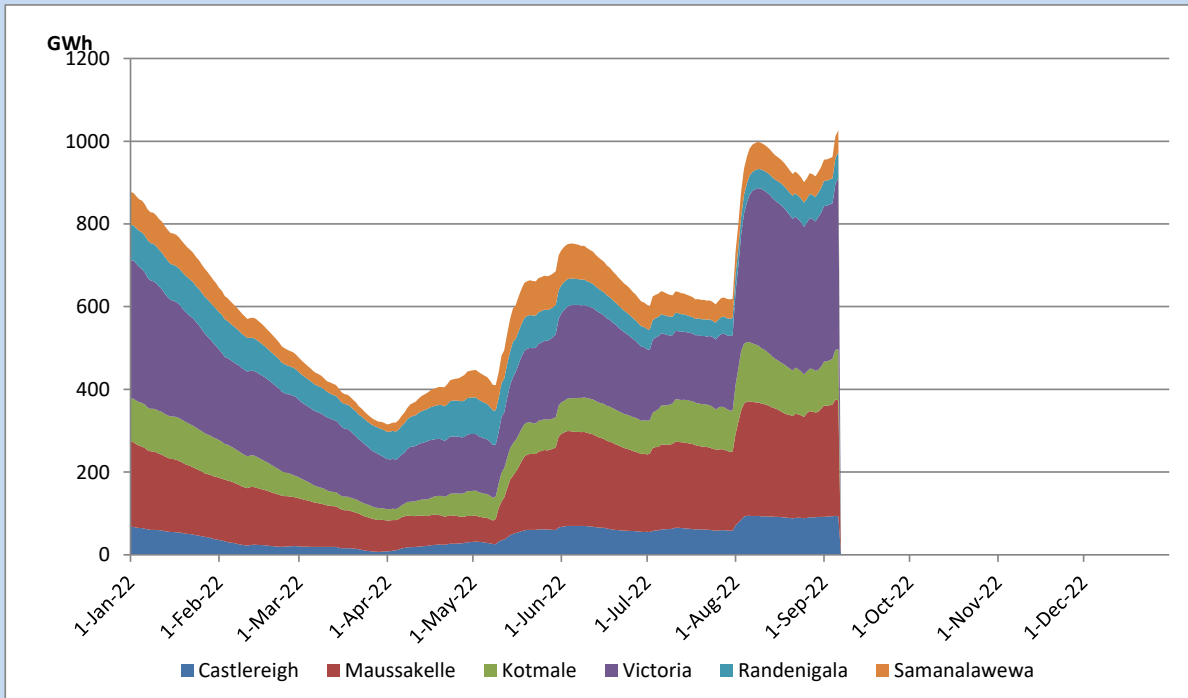


Total Reservoir Level	1026.2 GWh
% of Total capacity	85.1%

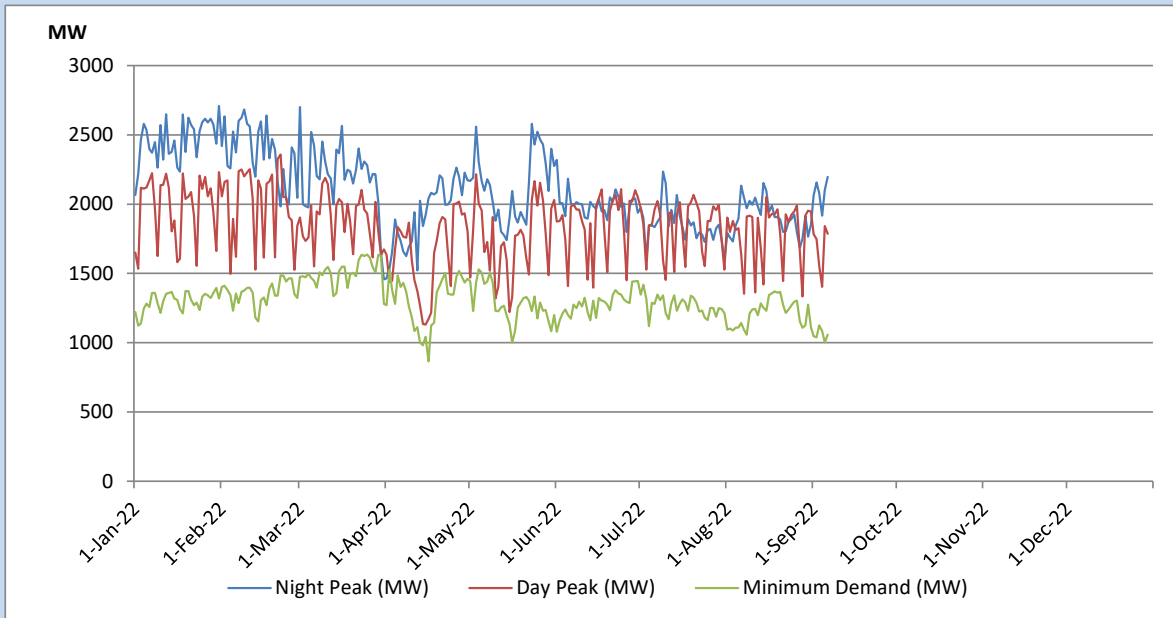
Comparison of Total Reservoir Storage Levels with Past Years



Variation of Major Hydro Reservoir Levels in the current year (GWh)



Variation of Demand during the current year

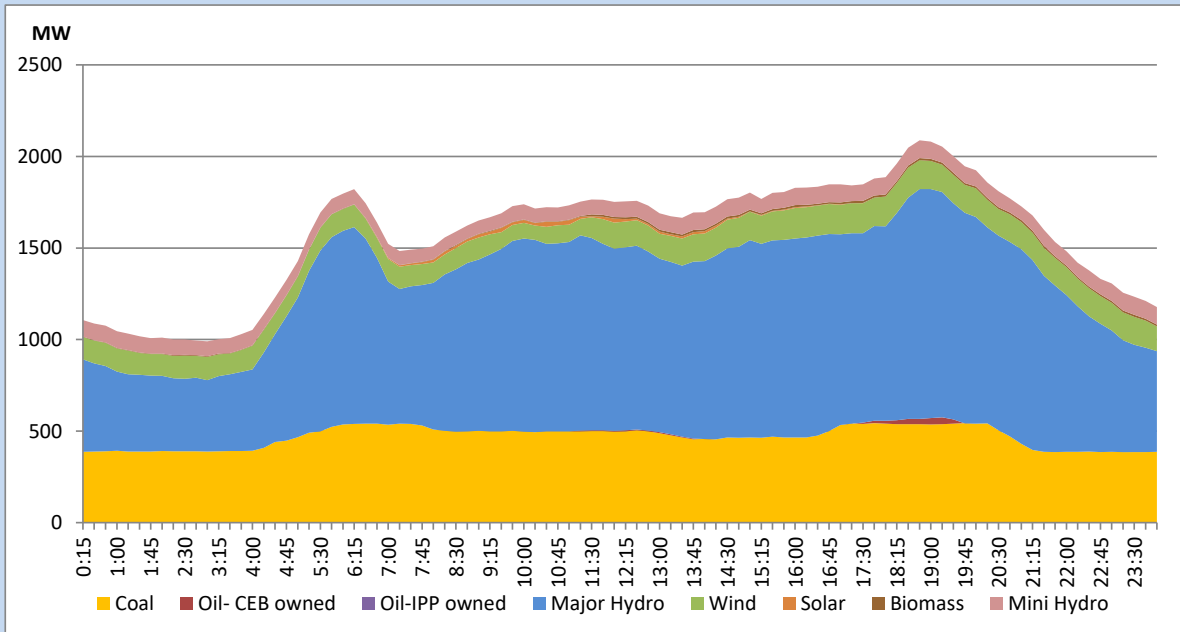


The above figures are excluding contribution from Roof Top Solar, 1MW solar, certain Wind plants and Mini Hydro plants

Daily Load Curve of the Previous day

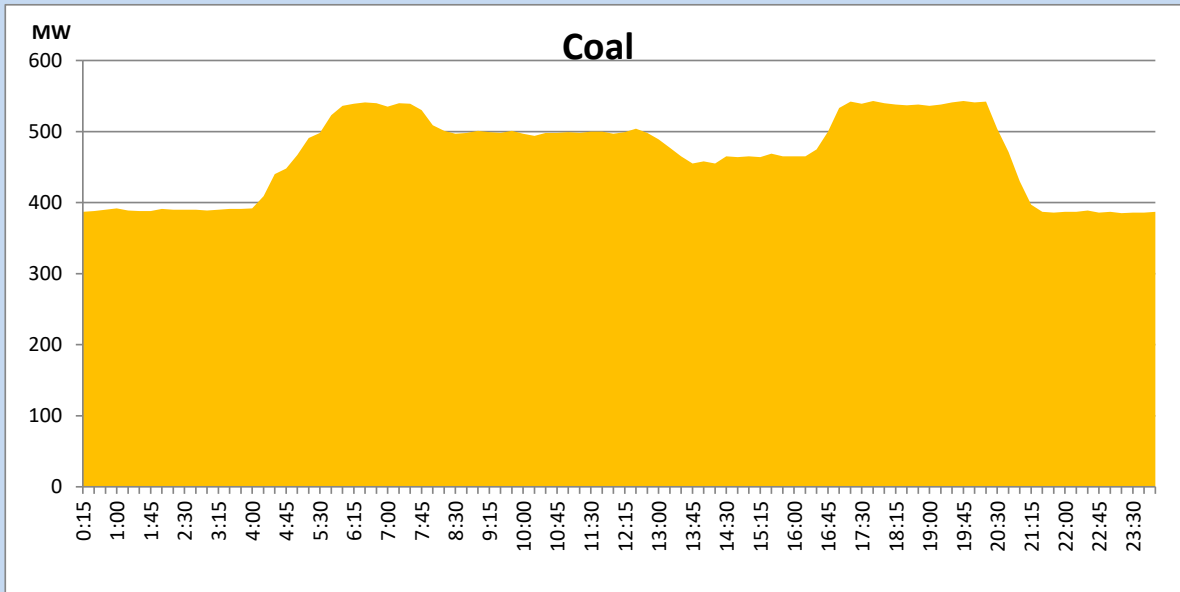
September 5, 2022

Solar and wind data is based on Telemetered Power Stations only



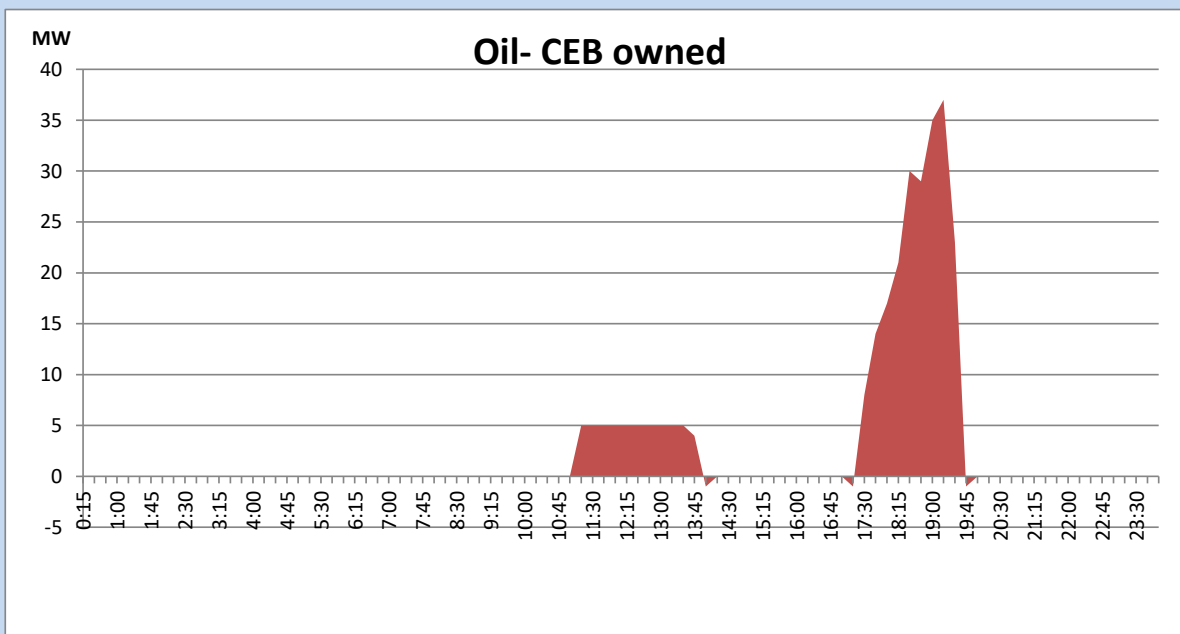
Coal Generation during the Previous day

September 5, 2022



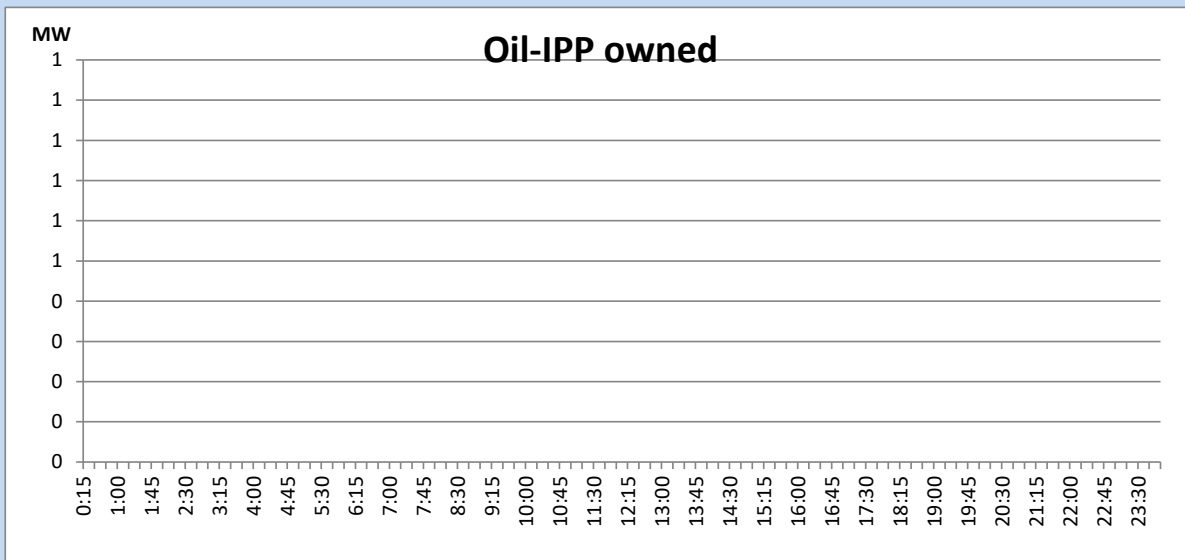
CEB Oil Plant Generation during the Previous day

September 5, 2022



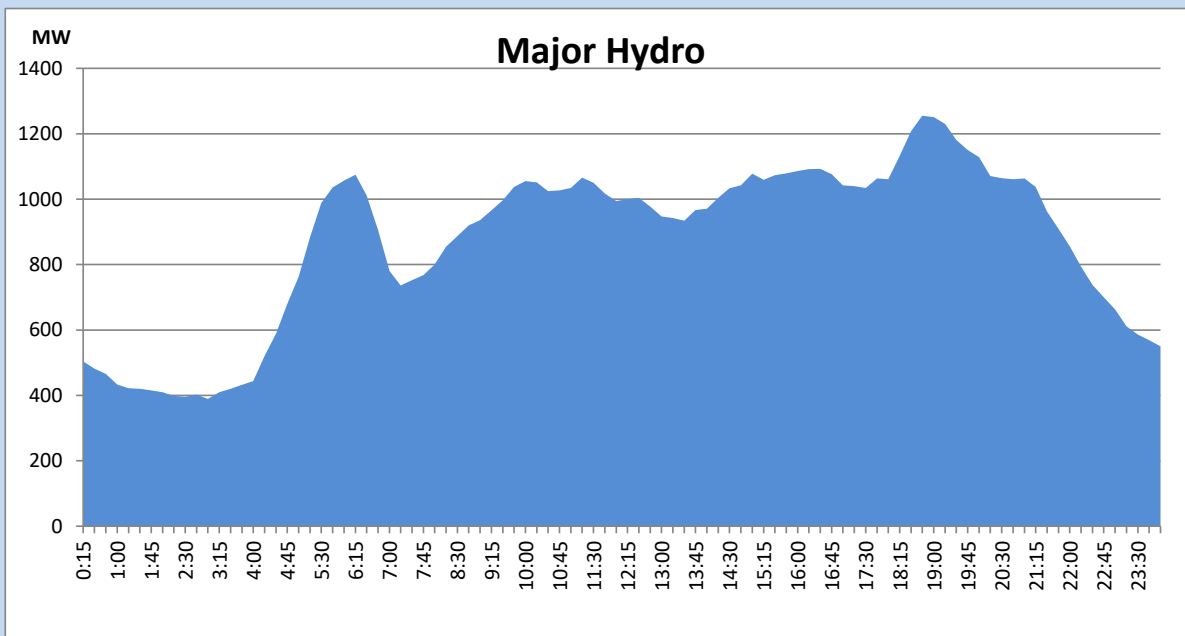
IPP Oil Plant Generation during the Previous day

September 5, 2022



Major Hydro Generation during the Previous day

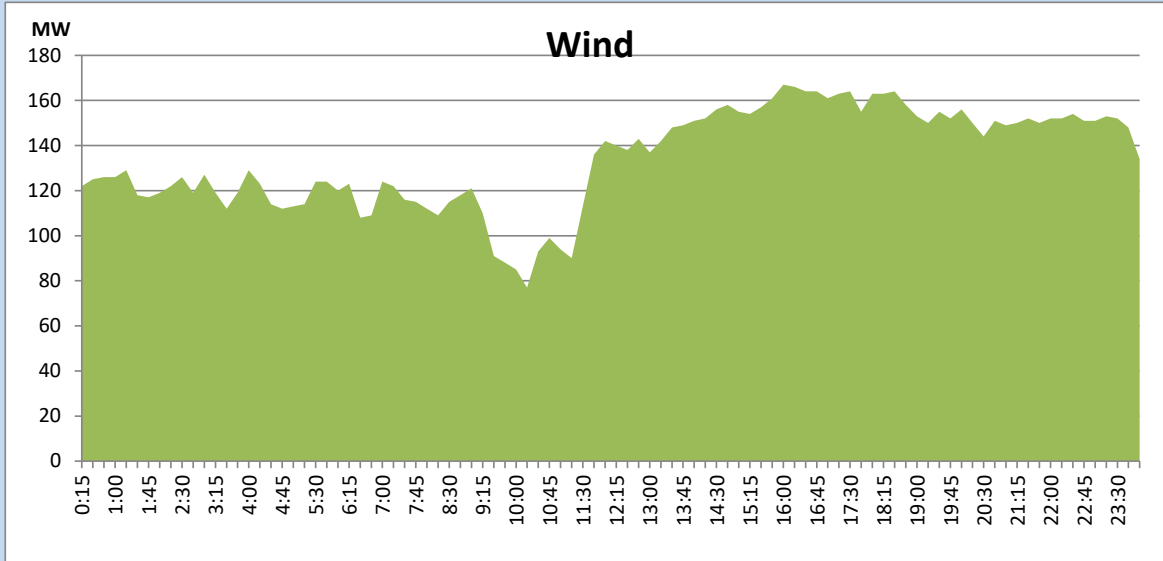
September 5, 2022



Wind Generation during the Previous day

September 5, 2022

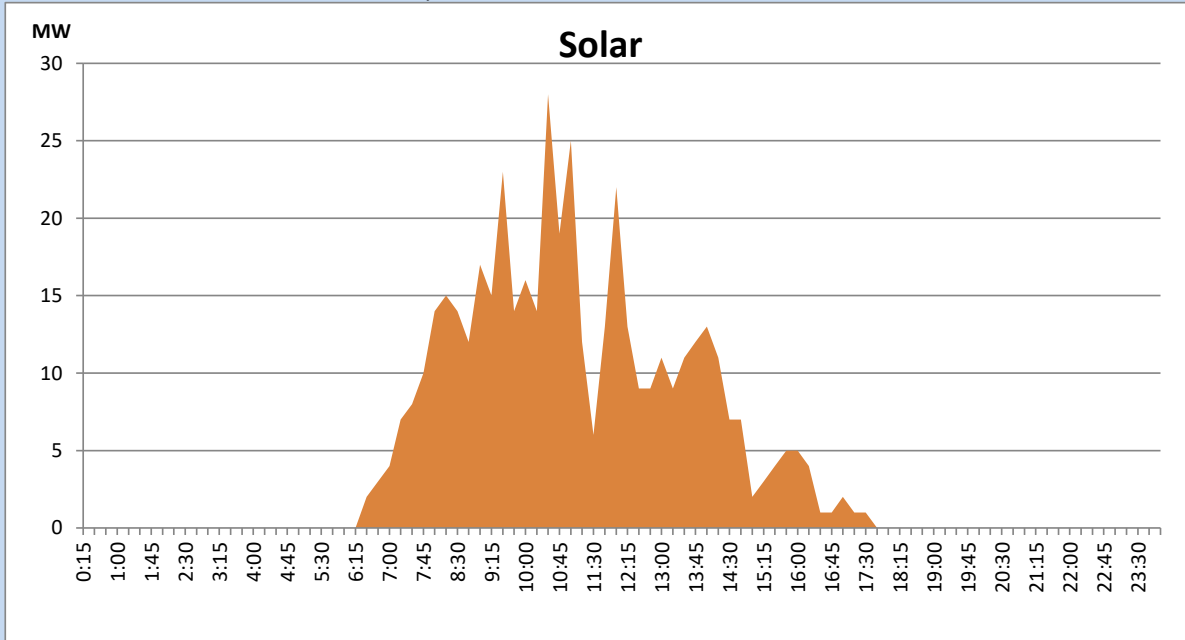
Based on Telemetered Power Stations only



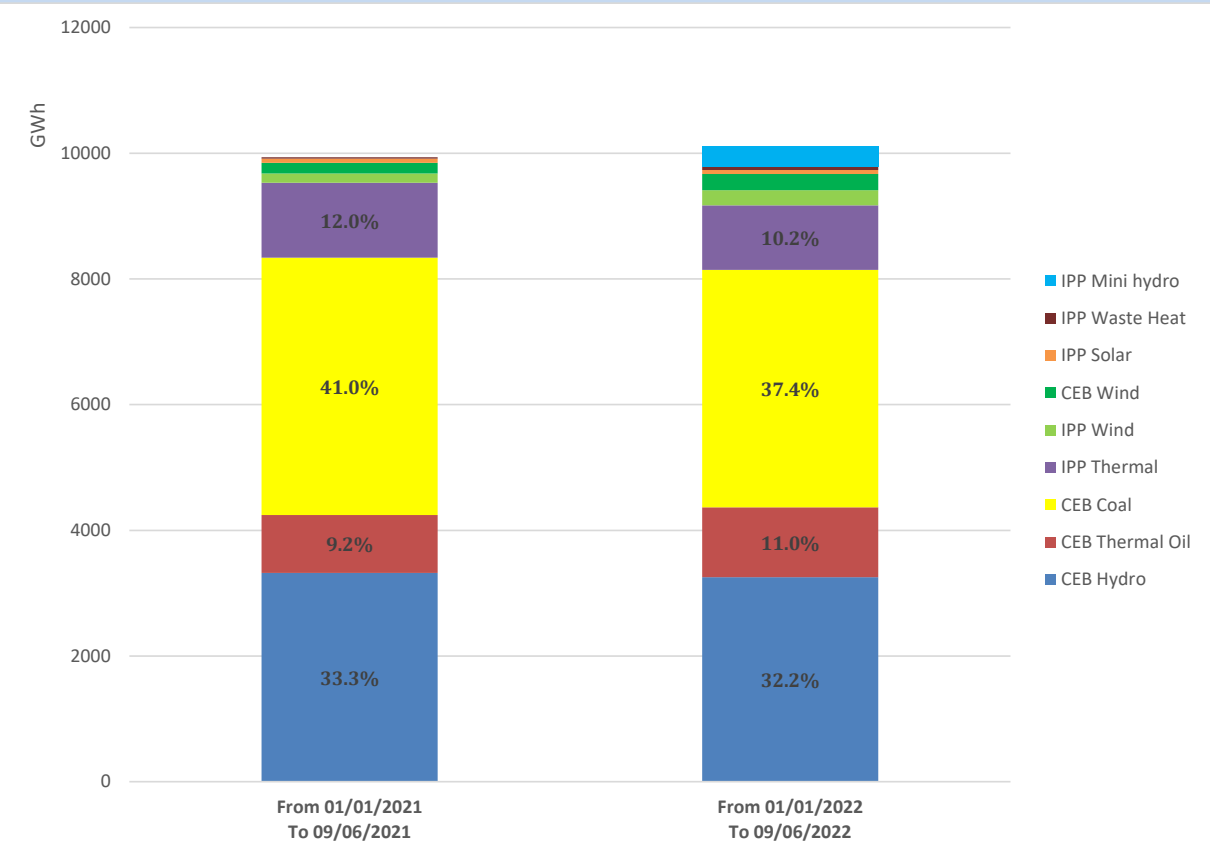
Solar Generation during the Previous day

September 5, 2022

Based on Telemetered Power Stations only



Cumulative Dispatch Comparison with Last Year



Thermal Plant Fuel types

Power Station	Primary Fuel
CEB Thermal	
Sapugaskanda 1	Heavy Fuel
Sapugaskanda 2	Heavy Fuel
Kelanitissa Small Gas Turbines	Auto Diesel
GT 7 - Kelanitissa	Auto Diesel
Kelanitissa CCY	Naphtha or Diesel
Lakvijaya 1	Coal
Lakvijaya 2	Coal
Lakvijaya 3	Coal
Uthuru Janani	Heavy Fuel
Barge CEB	Heavy Fuel

Power Station	Primary Fuel
Private Thermal	
Sojitz - Kelanitissa	Auto Diesel
West Coast	Auto Diesel / Heavy Fuel
ACE Matara	Heavy Fuel
ACE Embilipitiya	Heavy Fuel

Major Incidents during the day -as reported by CEB morning of

September 7, 2022

- 1) Canyon, Laxapana and Kukule pond spilling continues to the present hour.
- 2) Norton pond spilling stopped at 2:00hrs(07/09/2022) and started again at 4:48hrs(07/09/2022).
- 3) Upper kotmale spilling stopped at 9:38hrs and started again at 11:32hrs and stopped at 4:29hrs(07/09/2022).
- 4) Polpitiya unit-02 made forced shutdown at 9:22hrs due to TGB cooling water blockage and resume generation at 11:55hrs.