

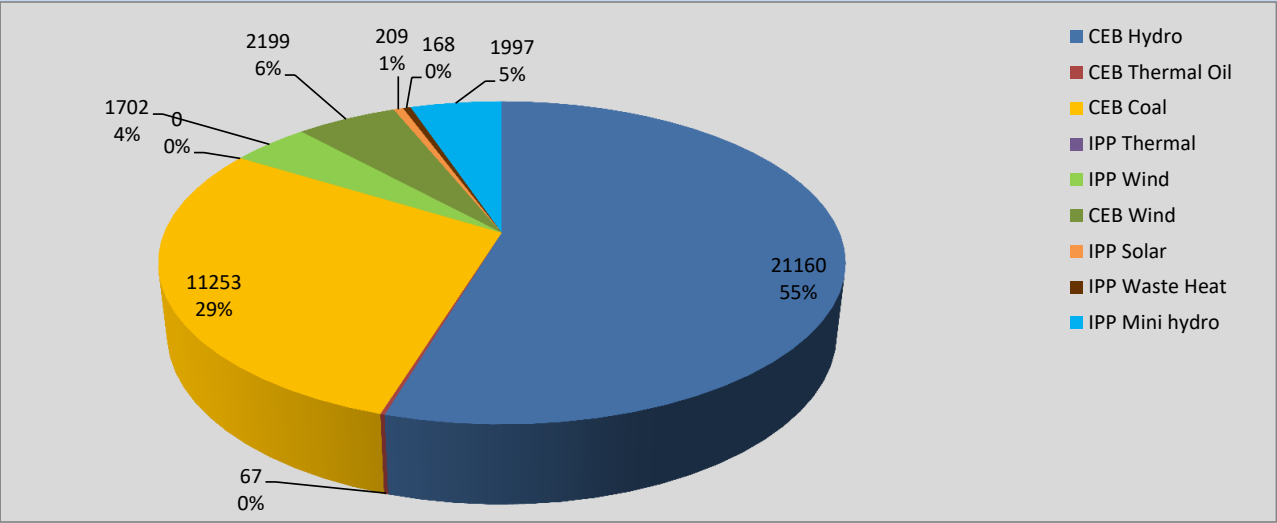
Generation and Reservoirs Statistics

September 5, 2022



PUBLIC UTILITIES COMMISSION OF SRI LANKA

Daily Generation Mix in MWh



Total Generation 38,755 MWh

Note: Above data is excluding contribution from Roof Top Solar, 1MW Solar and certain Mini Hydro plants

Cumulative Dispatch

Note: Following data is Excluding contribution from Roof Top Solar, 1MW solar and Mini Hydro plants

For Current Month

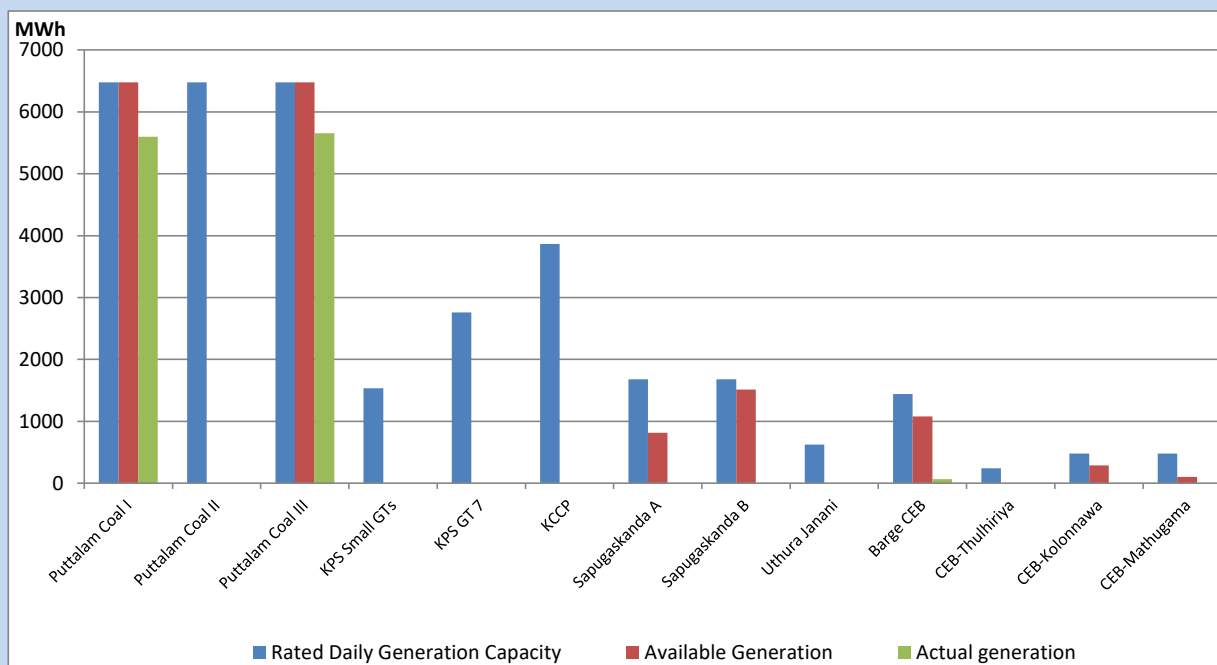
Category	Dispatch (GWh)	
CEB Hydro	98.92	53.71%
CEB Thermal Oil	0.94	0.51%
CEB Coal	53.95	29.29%
IPP Thermal	0.00	0.00%
SPP Wind	7.19	3.90%
CEB Wind	10.32	5.60%
SPP Solar	1.30	0.71%
SPP Solid Waste	1.11	0.60%
Mini Hydro	10.45	5.67%
Total	184.18	

For Current Year

Category	Dispatch (GWh)	
CEB Hydro	3,232.6	32.11%
CEB Thermal Oil	1,113.3	11.06%
CEB Coal	3,767.0	37.41%
IPP Thermal	1,026.9	10.20%
SPP Wind	238.0	2.36%
CEB Wind	256.4	2.55%
SPP Solar	63.6	0.63%
SPP Solid Waste	50.3	0.50%
Mini Hydro	320.5	3.18%
Total	10,068.3	

CEB owned Thermal Plant Dispatch

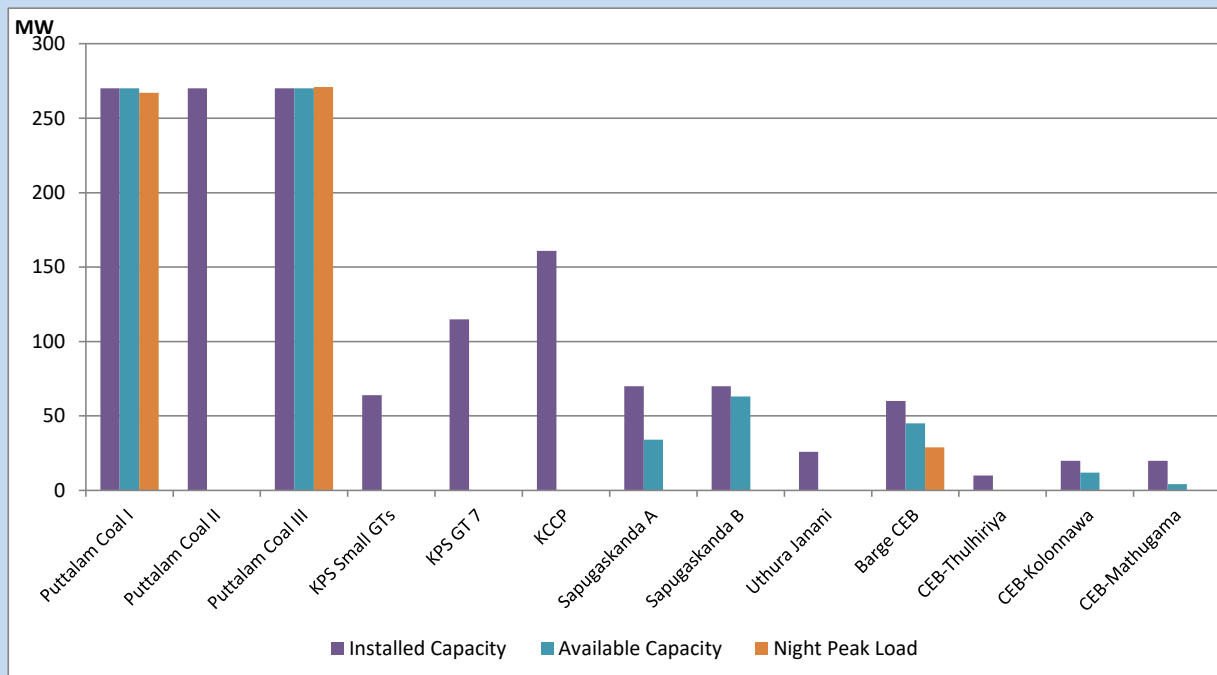
September 5, 2022



Available Generation is estimated based on plant availability at 6.00am on

September 6, 2022

CEB owned Thermal Plant Loading at the Night Peak



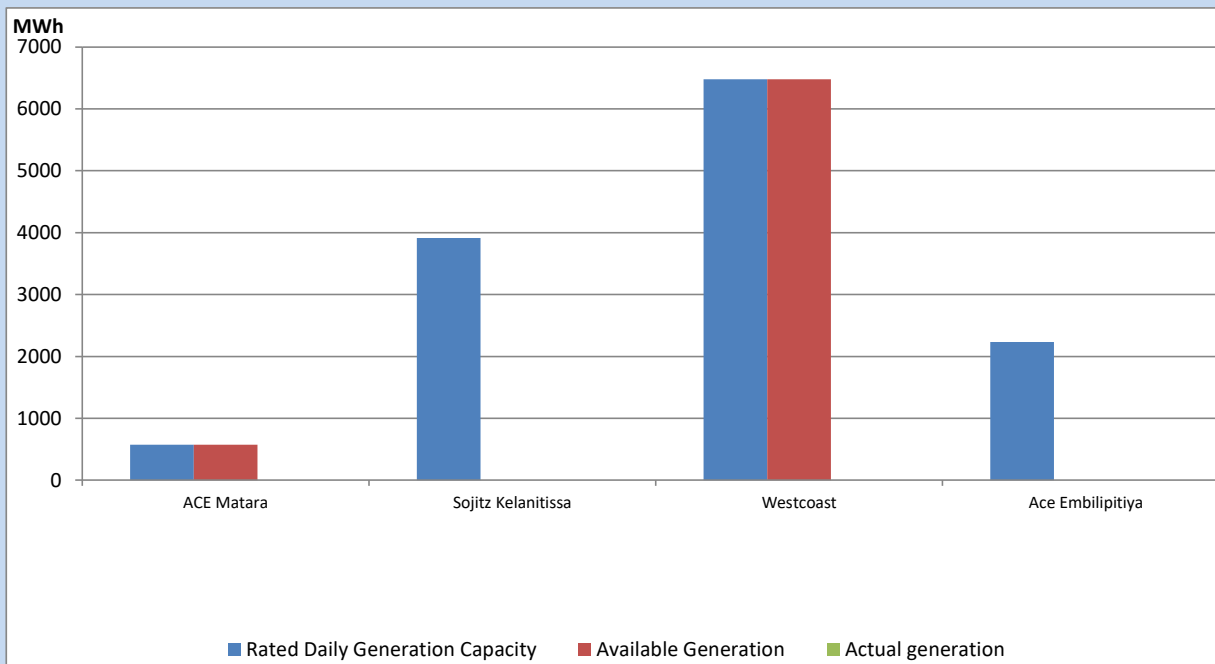
Note- Plant availability is recorded at 6.00 am on

September 6, 2022

IPP owned Thermal Plant Dispatch

September 5, 2022

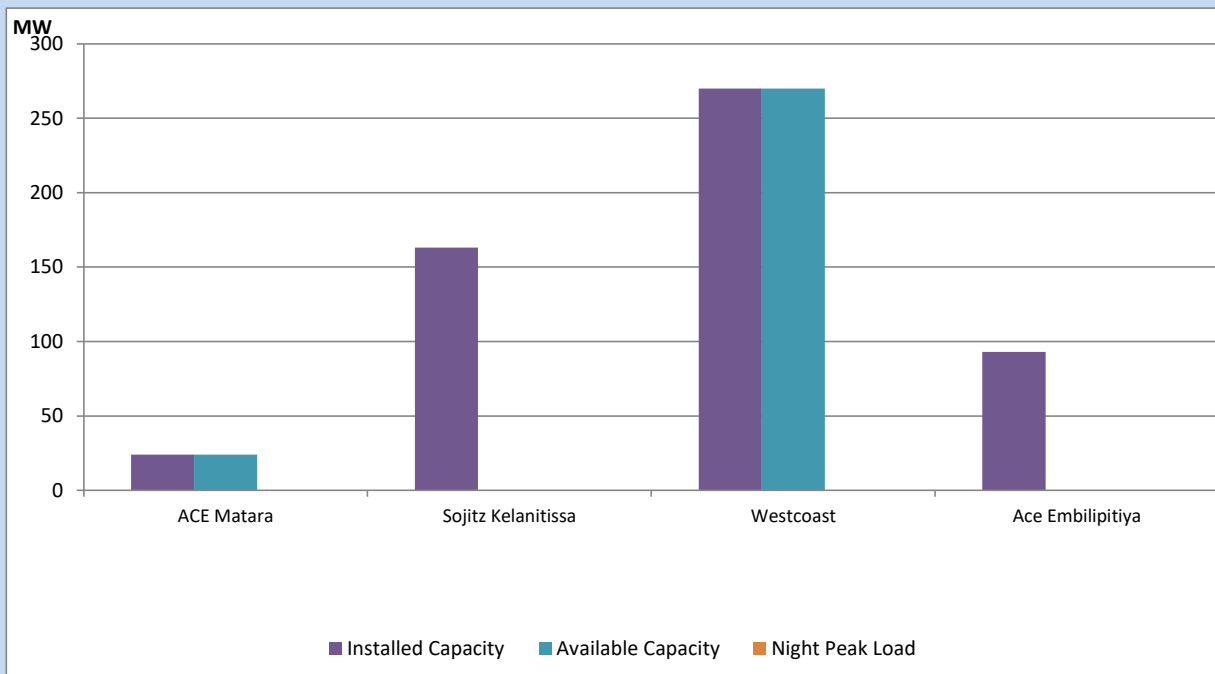
Asia Power, V Power Pallekale, Vpower Galle, V Power Horana, Vpower Hambantota, Vpower Valachchena and Altaqa Mahiyanganaya are not available due to expiration of PPAs



Available Generation is estimated based on plant availability at 6.00am on

September 6, 2022

IPP owned Thermal Plant Loading at the Night Peak

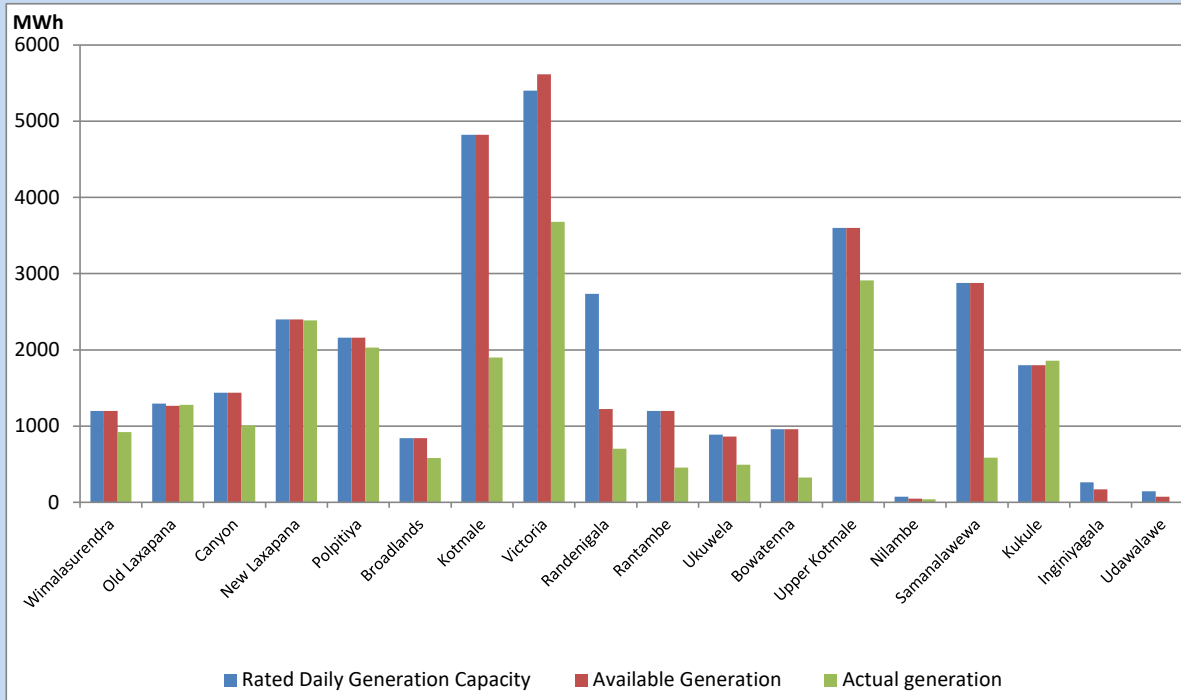


Note- Plant availability is recorded at 6.00 am on

September 6, 2022

Major Hydro Plant Dispatch

September 5, 2022

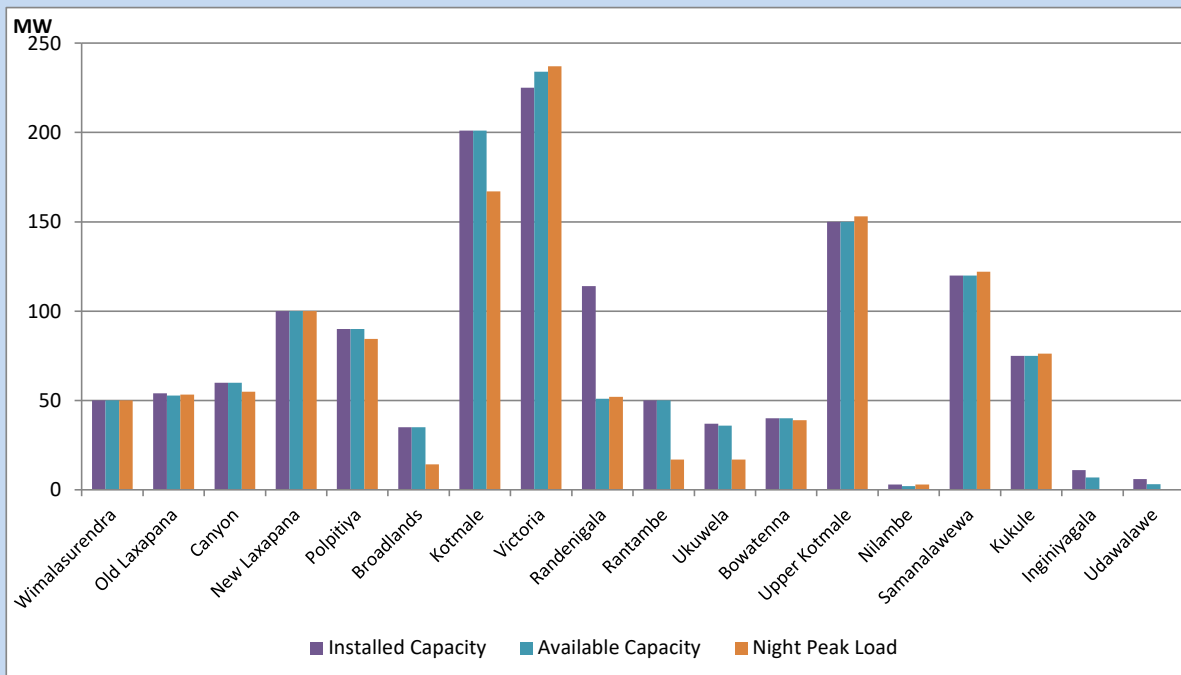


Available Generation is estimated based on plant availability at 6.00am on September 6, 2022
Broadlands power plant is operating in the Commissioning Stage

September 6, 2022

Major Hydro Plant Loading at Night Peak

September 5, 2022



Note- Plant availability is recorded at 6.00 am on September 6, 2022
Broadlands power plant is operating in the Commissioning Stage

Summary of Major Plant performance

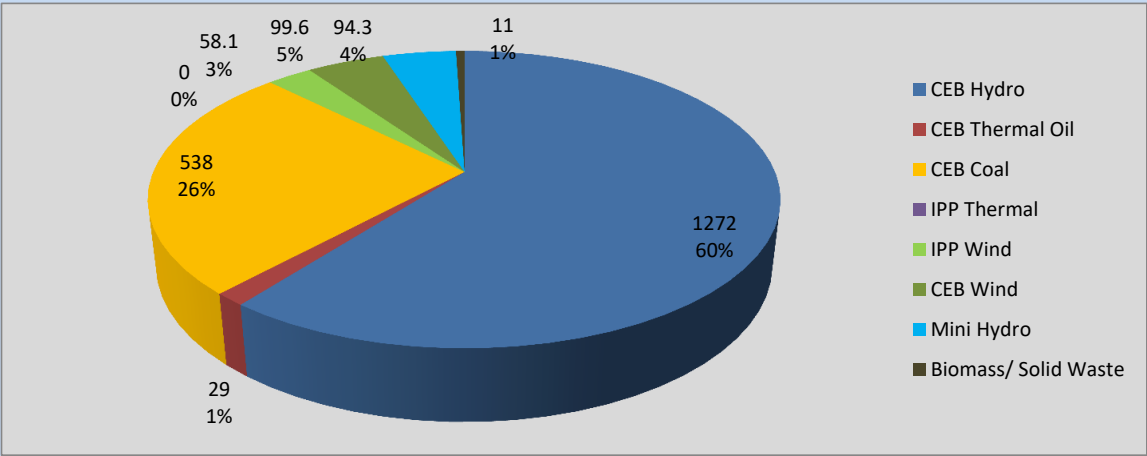
Plant	Installed Capacity	Plant Availability	Night peak Load	Plant Dispatch
	(MW)	(MW)	(MW)	(MWh)
Wimalasurendra	50	50	50	922
Old Laxapana	54	53	53	1,278
Canyon	60	60	55	1,008
New Laxapana	100	100	100	2,385
Polpitiya	90	90	85	2,028
Broadlands	35	35	14	581
Kotmale	201	201	167	1,900
Victoria	225	234	237	3,682
Randenigala	114	51	52	704
Rantambe	50	50	17	456
Ukuwela	37	36	17	494
Bowatenna	40	40	39	327
Upper Kotmale	150	150	153	2,913
Nilambe	3	2	3	40
Samanalawewa	120	120	122	585
Kukule	75	75	76	1,857
Inginiyagala	11	7	0	0
Udawalawe	6	3	0	0
Puttalam Coal I	270	270	267	5,600
Puttalam Coal II	270	0	0	0
Puttalam Coal III	270	270	271	5,653
KPS Small GTs	64	0	0	0
KPS GT 7	115	0	0	0
KCCP	161	0	0	0
Sapugaskanda A	70	34	0	0
Sapugaskanda B	70	63	0	0
Uthura Janani	26	0	0	0
Barge CEB	60	45	29	67
CEB-Thulhiriya	10	0	0	0
CEB-Kolonnawa	20	12	0	0
CEB-Mathugama	20	4	0	0
ACE Matara	24	24	0	0
Sojitz Kelanitissa	163	0	0	0
West Coast	270	270	0	0
ACE Embilipitiya	93	0	0	0
Total	3,397	2,349	2,070	38,755

Plant availability is the availability recorded at 6 am on

September 6, 2022

Contribution to the Night Peak in MW

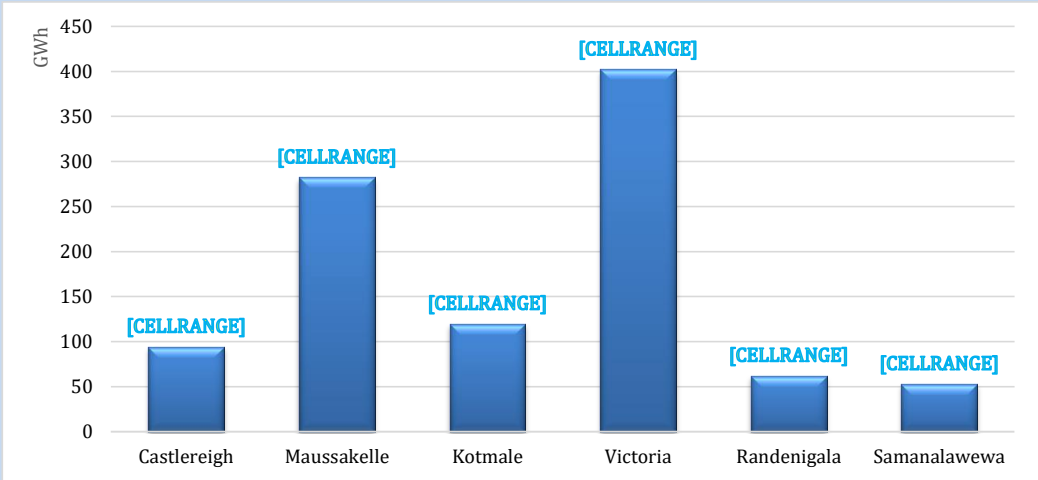
September 5, 2022



Night Peak*	2,102.3	MW
Day Peak	1,841.5	MW
Minimum Demand	1,001.5	MW

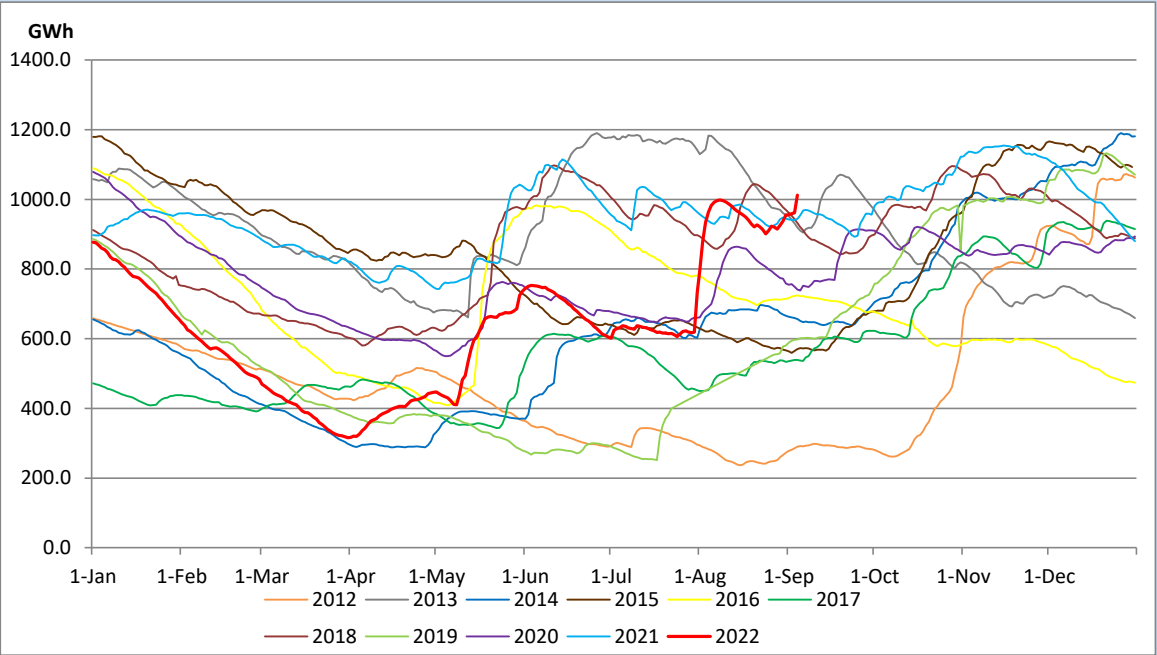
Above figures are excluding contribution from Roof Top Solar, 1MW solar, certain Wind plants and Mini Hydro plants

Reservoir Levels - as at 06.00 Hr on September 6, 2022

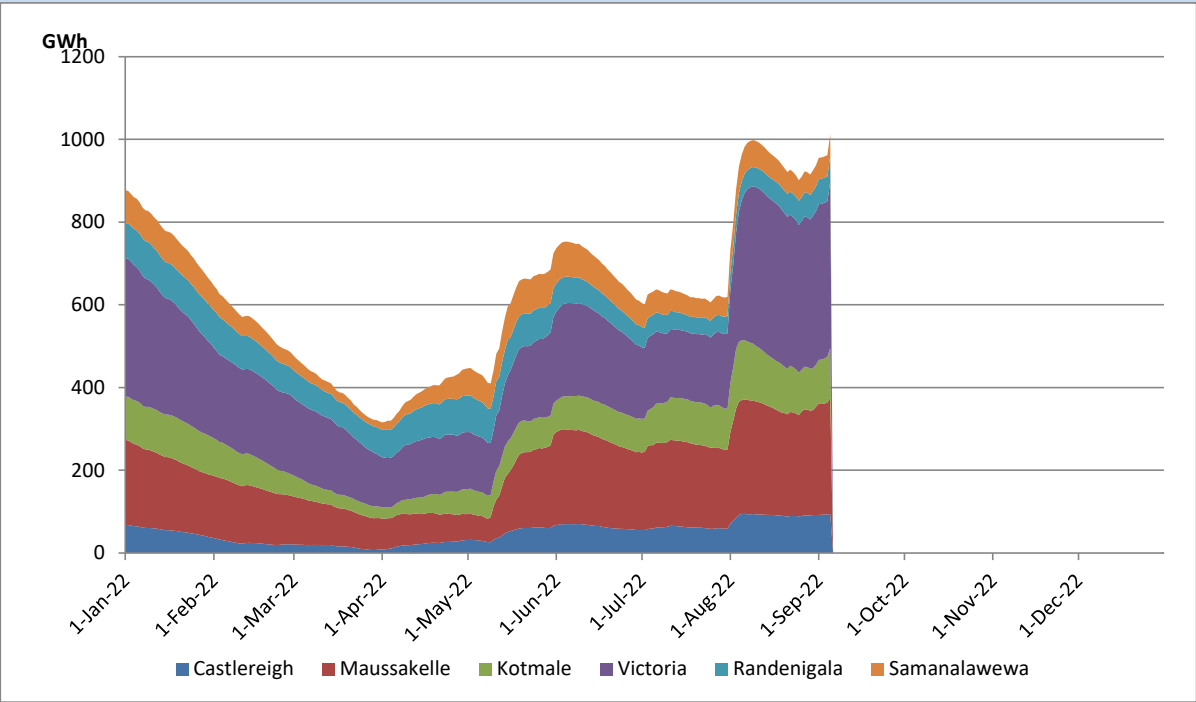


Total Reservoir Level	1011.7	GWh
% of Total capacity	83.9	%

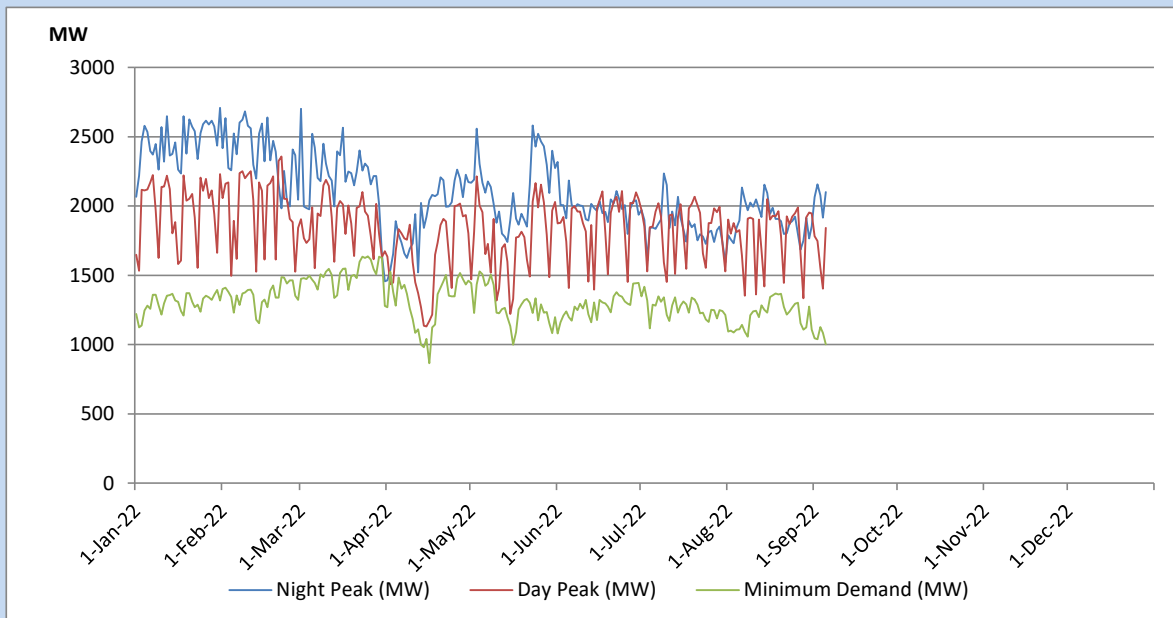
Comparison of Total Reservoir Storage Levels with Past Years



Variation of Major Hydro Reservoir Levels in the current year (GWh)



Variation of Demand during the current year

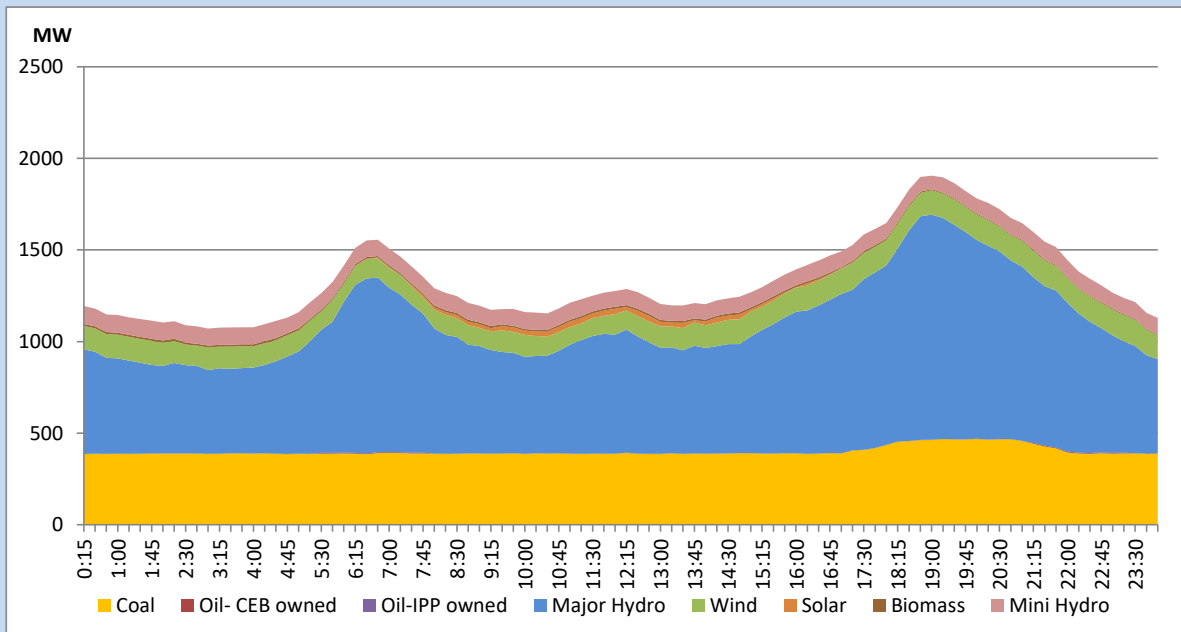


The above figures are excluding contribution from Roof Top Solar, 1MW solar, certain Wind plants and Mini Hydro plants

Daily Load Curve of the Previous day

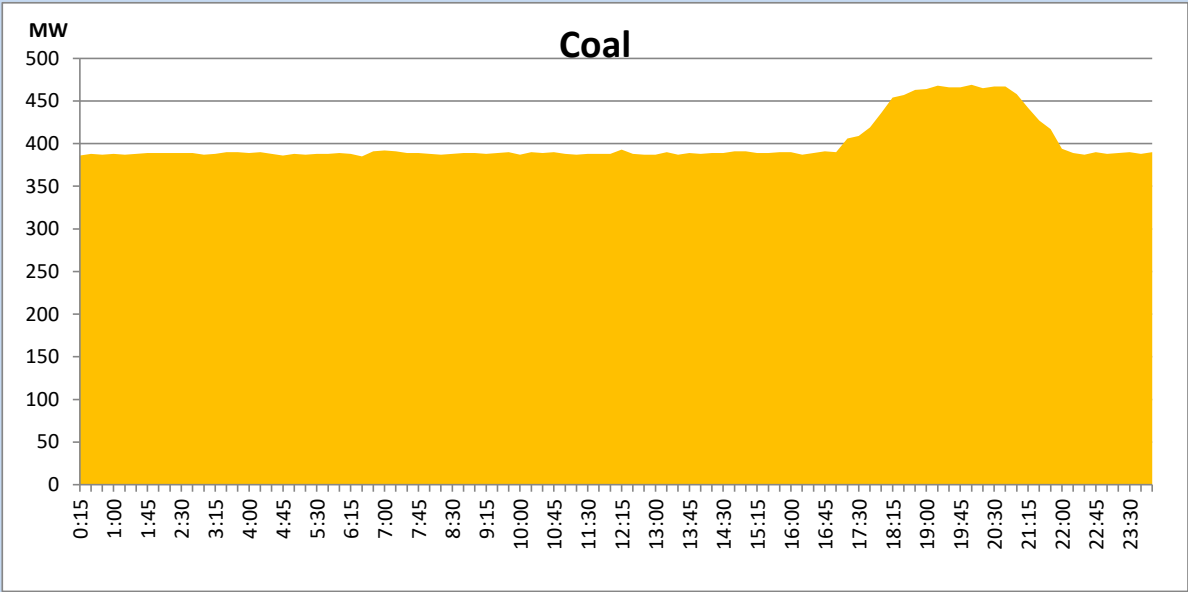
September 4, 2022

Solar and wind data is based on Telemetered Power Stations only



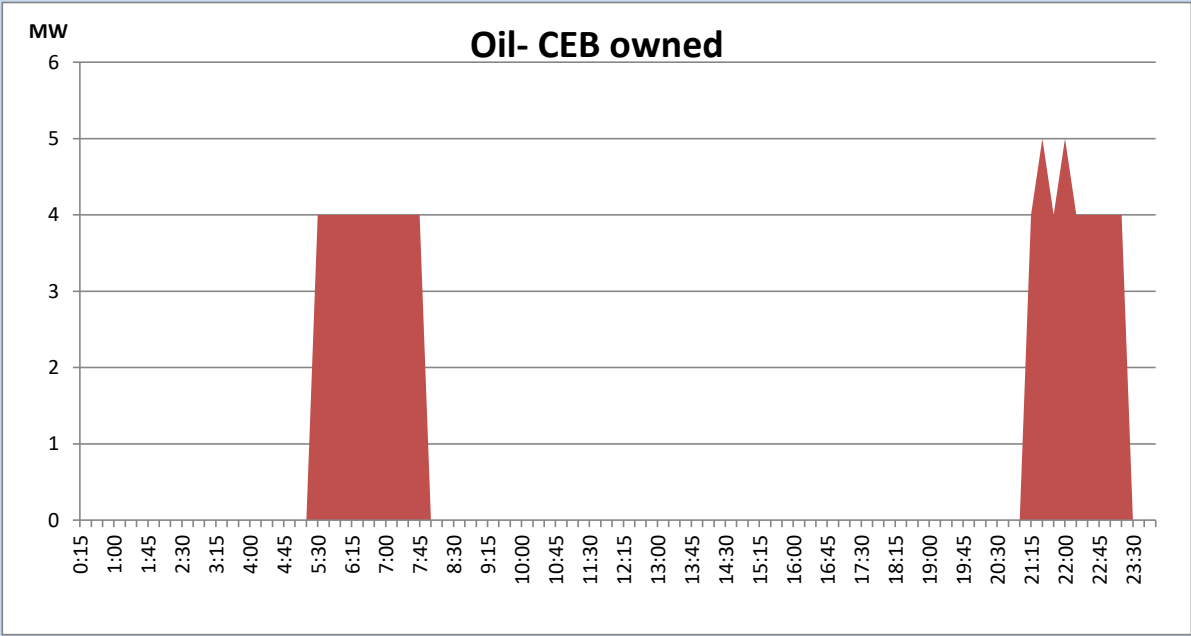
Coal Generation during the Previous day

September 4, 2022



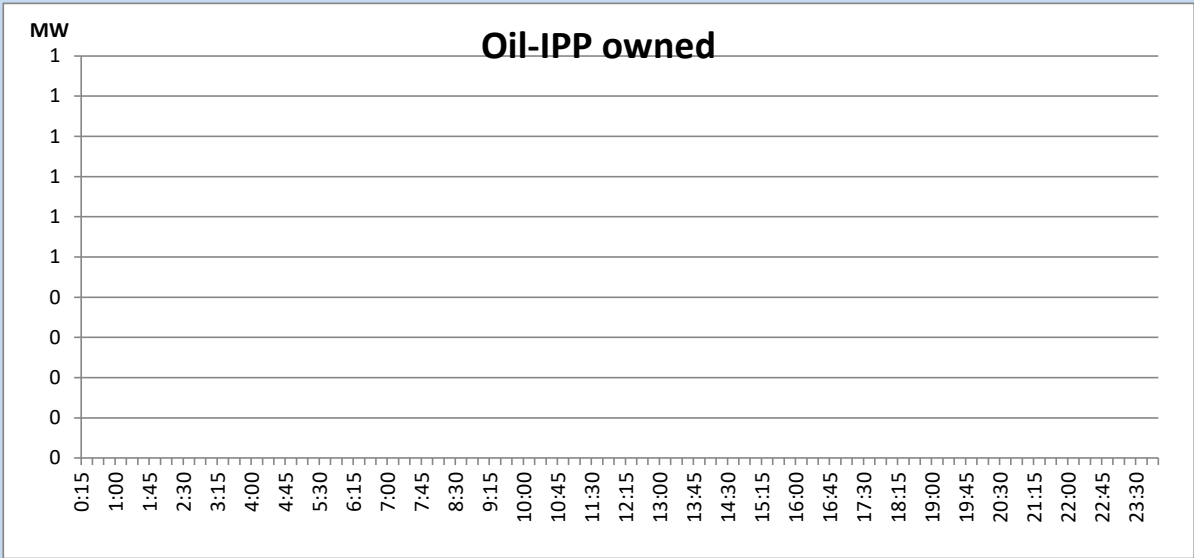
CEB Oil Plant Generation during the Previous day

September 4, 2022



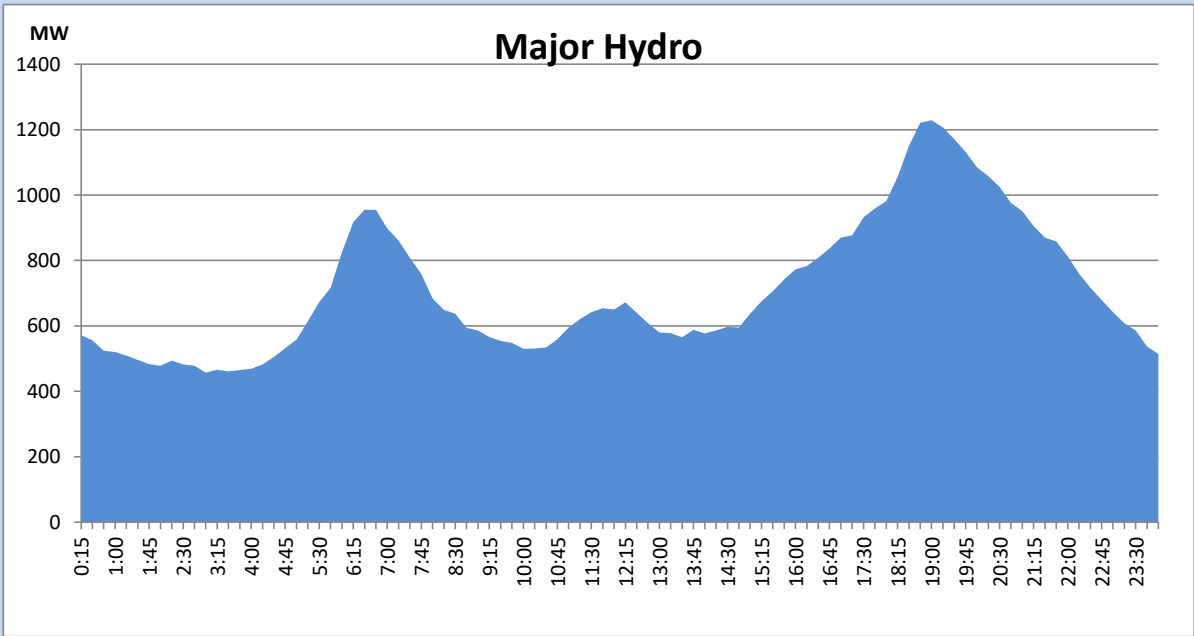
IPP Oil Plant Generation during the Previous day

September 4, 2022



Major Hydro Generation during the Previous day

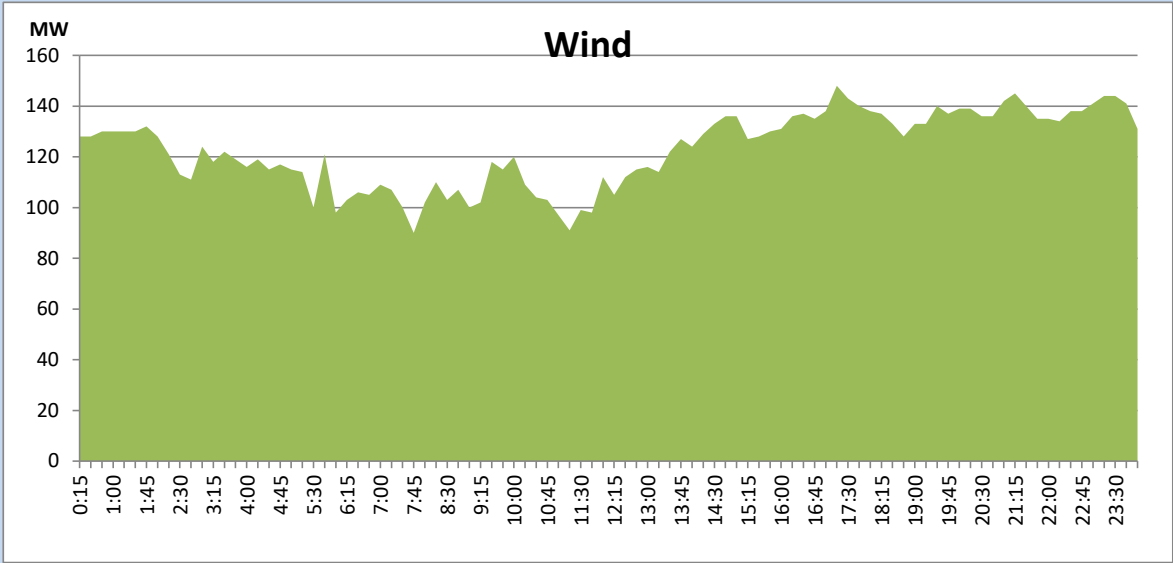
September 4, 2022



Wind Generation during the Previous day

September 4, 2022

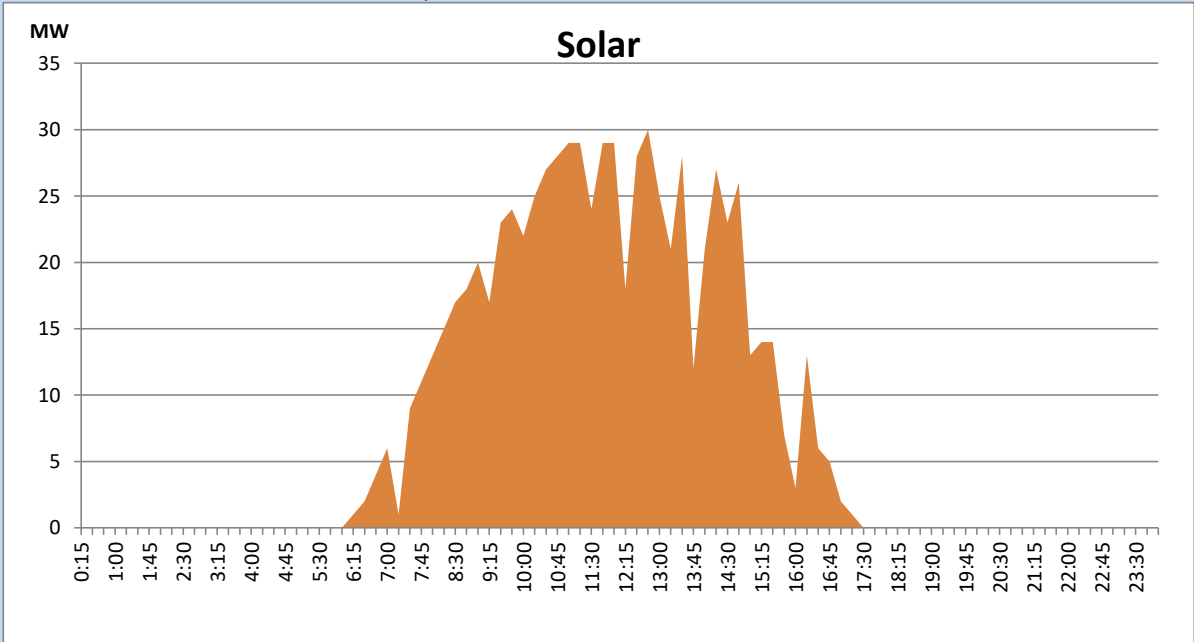
Based on Telemetered Power Stations only



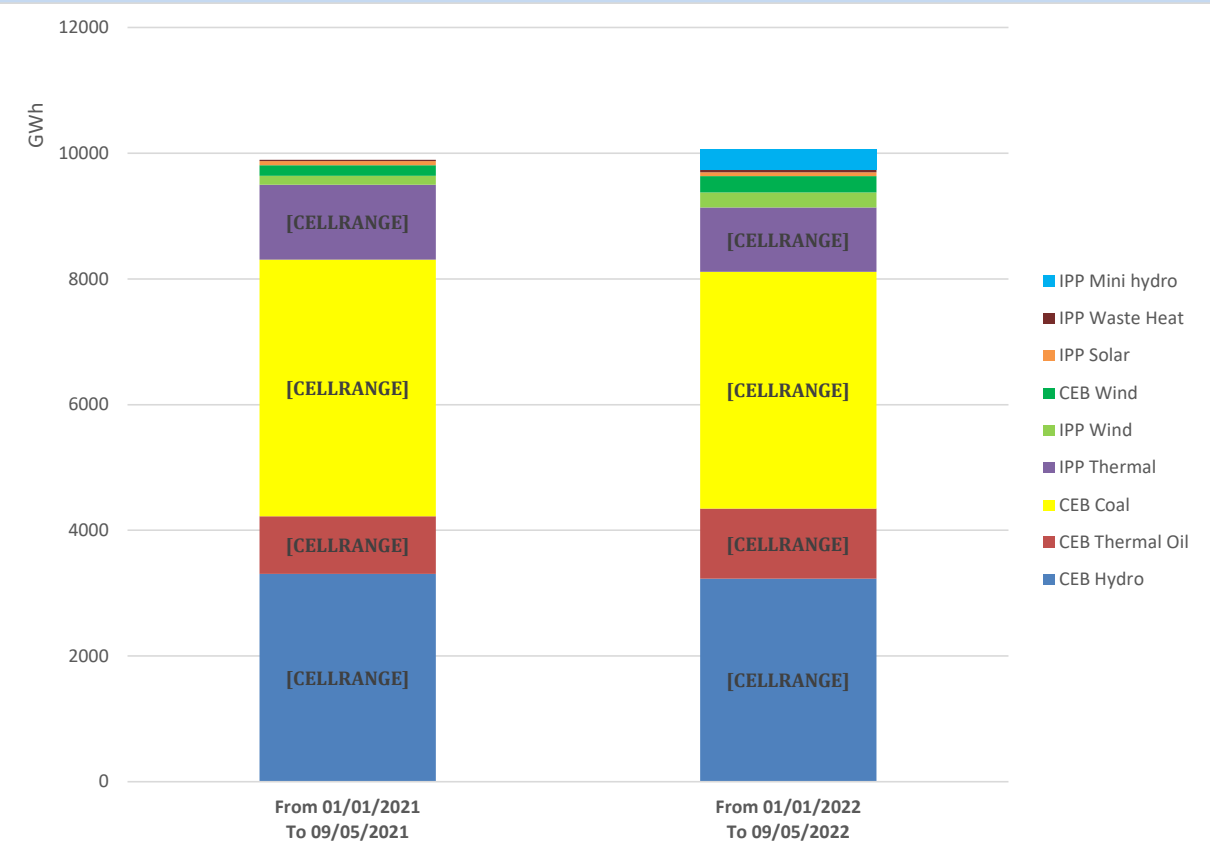
Solar Generation during the Previous day

September 4, 2022

Based on Telemetered Power Stations only



Cumulative Dispatch Comparison with Last Year



Thermal Plant Fuel types

Power Station	Primary Fuel
CEB Thermal	
Sapugaskanda 1	Heavy Fuel
Sapugaskanda 2	Heavy Fuel
Kelanitissa Small Gas Turbines	Auto Diesel
GT 7 - Kelanitissa	Auto Diesel
Kelanitissa CCY	Naphtha or Diesel
Lakvijaya 1	Coal
Lakvijaya 2	Coal
Lakvijaya 3	Coal
Uthuru Janani	Heavy Fuel
Barge CEB	Heavy Fuel

Power Station	Primary Fuel
Private Thermal	
Sojitz - Kelanitissa	Auto Diesel
West Coast	Auto Diesel / Heavy Fuel
ACE Matara	Heavy Fuel
ACE Embilipitiya	Heavy Fuel

Major Incidents during the day -as reported by CEB morning of

September 6, 2022

- 1) Kukule spilling continues to the present hour.
- 2) Laxapana, Norton and canyon ponds started spilling at 05:05 hrs, 07:54 hrs and 09:10 hrs respectively and spilling continues to the present hour.
- 3) Upper kotmale spilling started at 20:53hrs and continues to the present hour.
- 4) Ukuwela Unit-01 and 02 made unavailable at 18:16 hrs and 19:46 hrs respectively due to intake blockage and yet to resume generators.
- 5) Polpitiya unit-02 made forced shutdown at 19:46 hrs due to TGB cooling water blockage and resume generation at 20:32 hrs.