

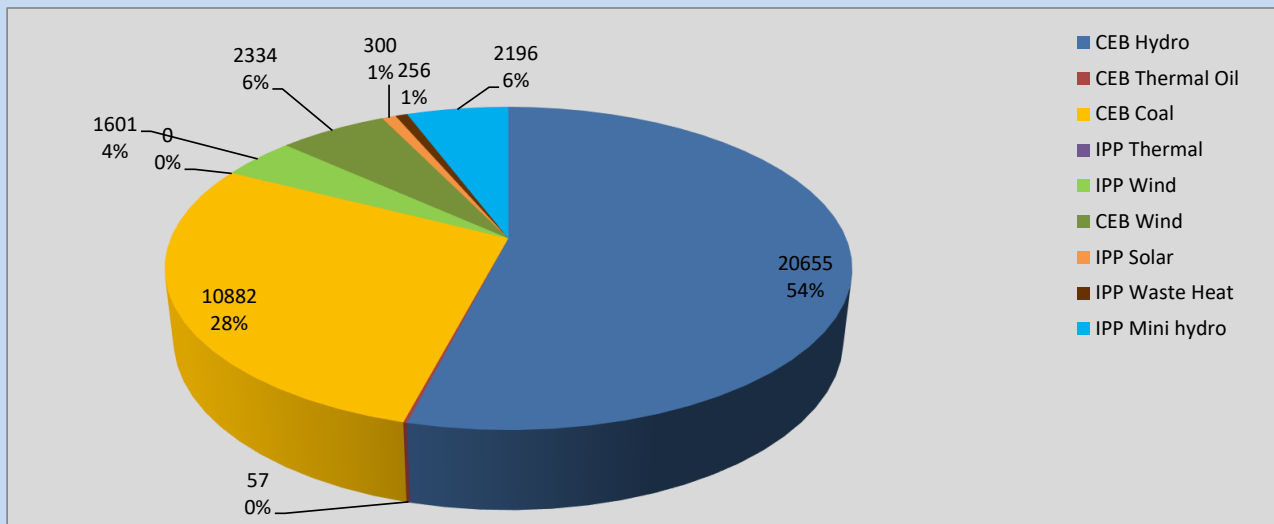
Generation and Reservoirs Statistics

September 2, 2022



PUBLIC UTILITIES COMMISSION OF SRI LANKA

Daily Generation Mix in MWh



Total Generation **38,281 MWh**

Note: Above data is excluding contribution from Roof Top Solar, 1MW Solar and certain Mini Hydro plants

Cumulative Dispatch

Note: Following data is Excluding contribution from Roof Top Solar, 1MW solar and Mini Hydro plants

For Current Month

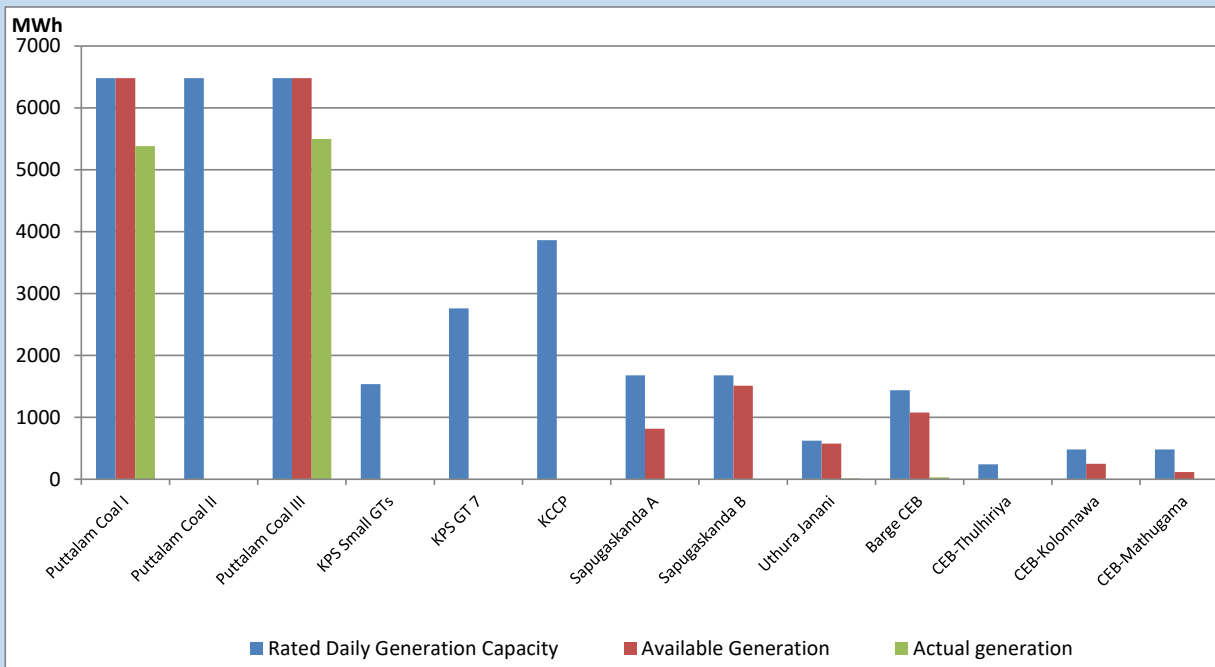
Category	Dispatch (GWh)	Percentage
CEB Hydro	40.75	53.60%
CEB Thermal Oil	0.84	1.10%
CEB Coal	22.94	30.18%
IPP Thermal	0.00	0.00%
SPP Wind	2.73	3.59%
CEB Wind	3.66	4.81%
SPP Solar	0.49	0.64%
SPP Solid Waste	0.48	0.63%
Mini Hydro	4.13	5.43%
Total	76.02	

For Current Year

Category	Dispatch (GWh)	Percentage
CEB Hydro	3,174.5	31.87%
CEB Thermal Oil	1,113.2	11.18%
CEB Coal	3,736.0	37.51%
IPP Thermal	1,026.9	10.31%
SPP Wind	233.5	2.34%
CEB Wind	249.7	2.51%
SPP Solar	62.8	0.63%
SPP Solid Waste	49.6	0.50%
Mini Hydro	314.1	3.15%
Total	9,960.1	

CEB owned Thermal Plant Dispatch

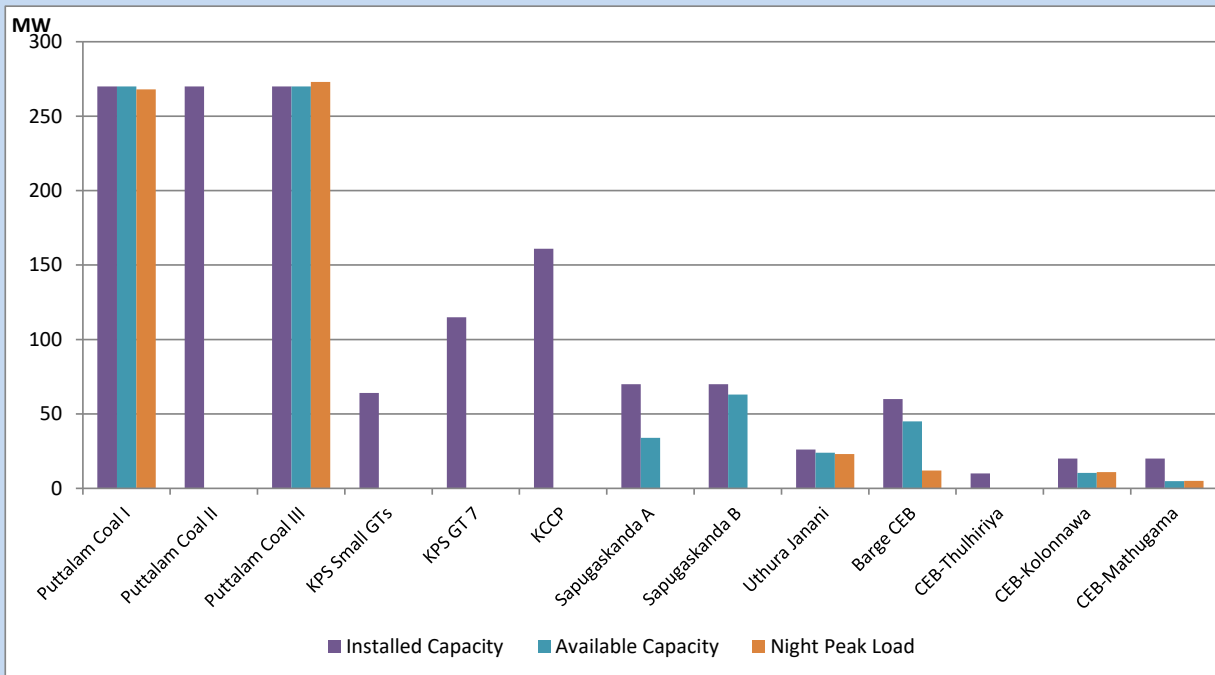
September 2, 2022



Available Generation is estimated based on plant availability at 6.00am on

September 3, 2022

CEB owned Thermal Plant Loading at the Night Peak



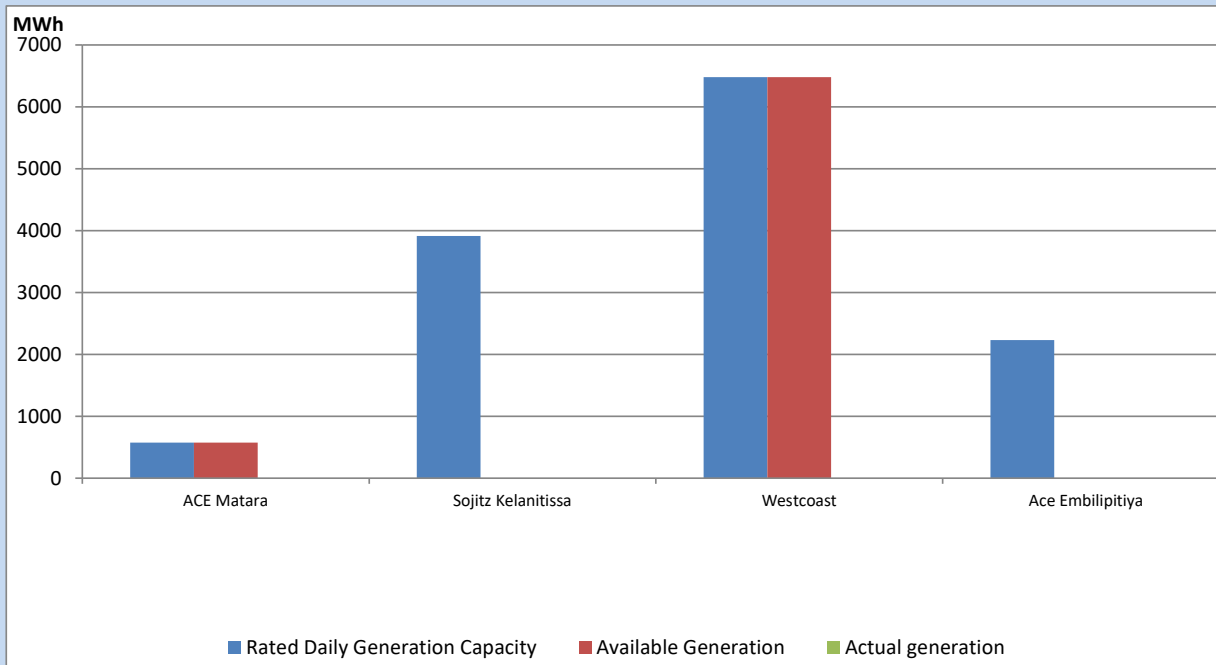
Note- Plant availability is recorded at 6.00 am on

September 3, 2022

IPP owned Thermal Plant Dispatch

September 2, 2022

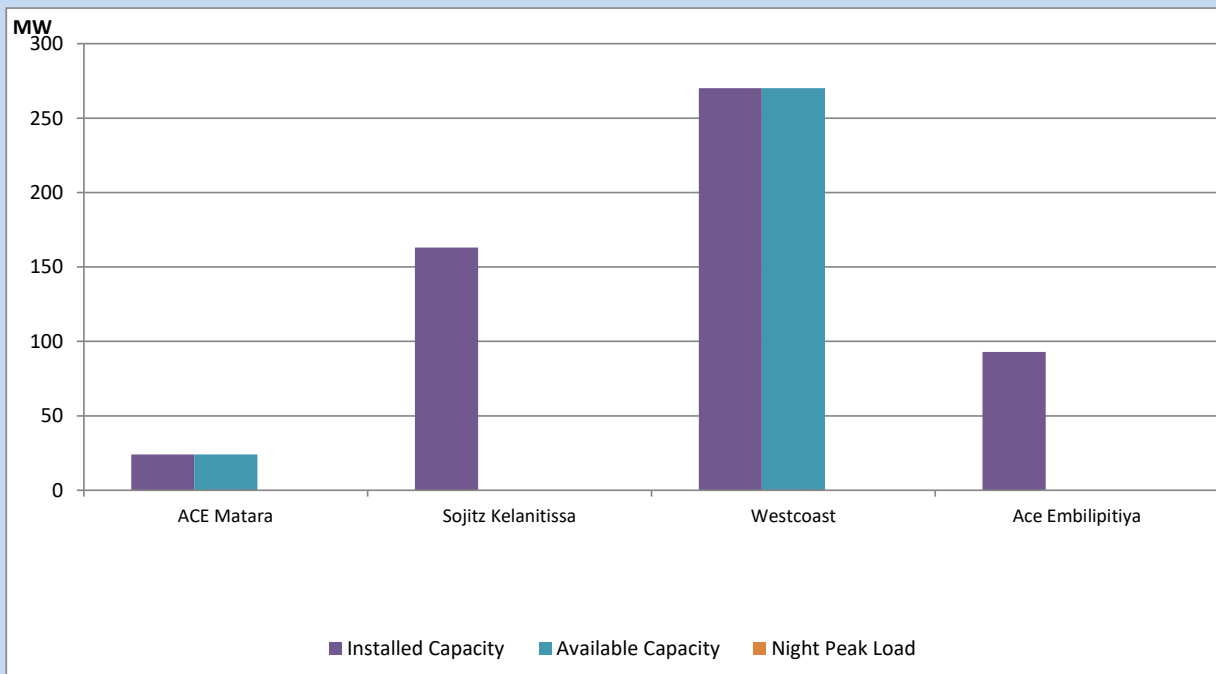
Asia Power, V Power Pallekale, Vpower Galle, V Power Horana, Vpower Hambantota, Vpower Valachchena and Altaqa Mahiyanganaya are not available due to expiration of PPAs



Available Generation is estimated based on plant availability at 6.00am on

September 3, 2022

IPP owned Thermal Plant Loading at the Night Peak

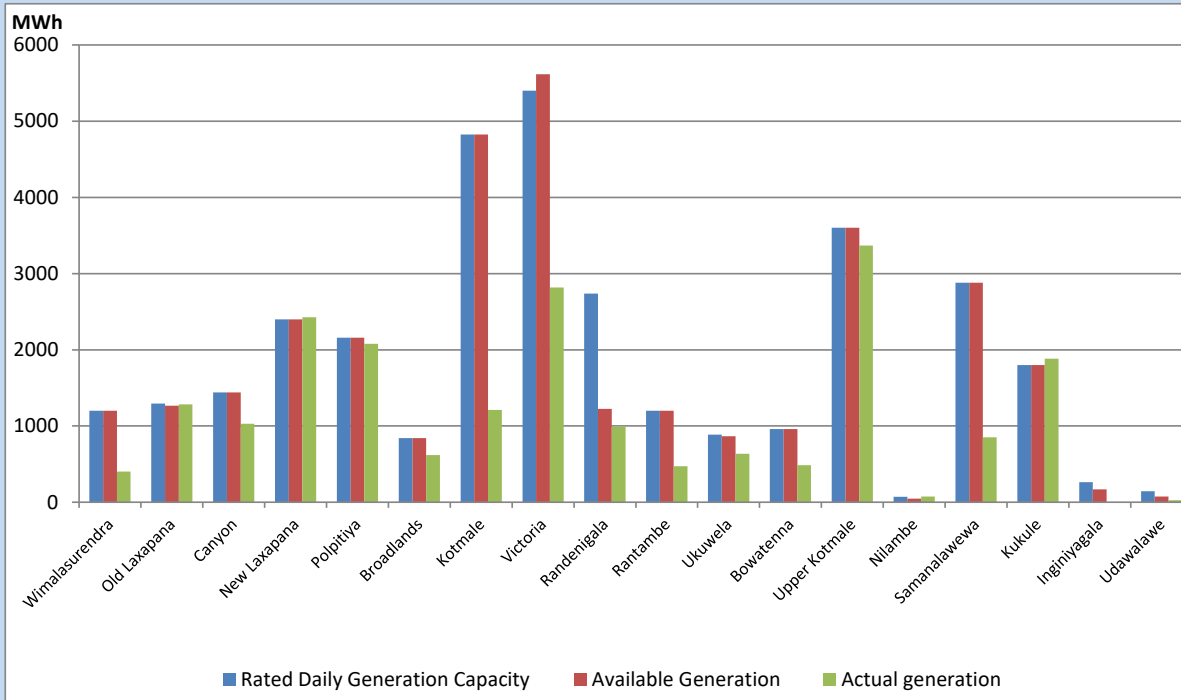


Note- Plant availability is recorded at 6.00 am on

September 3, 2022

Major Hydro Plant Dispatch

September 2, 2022

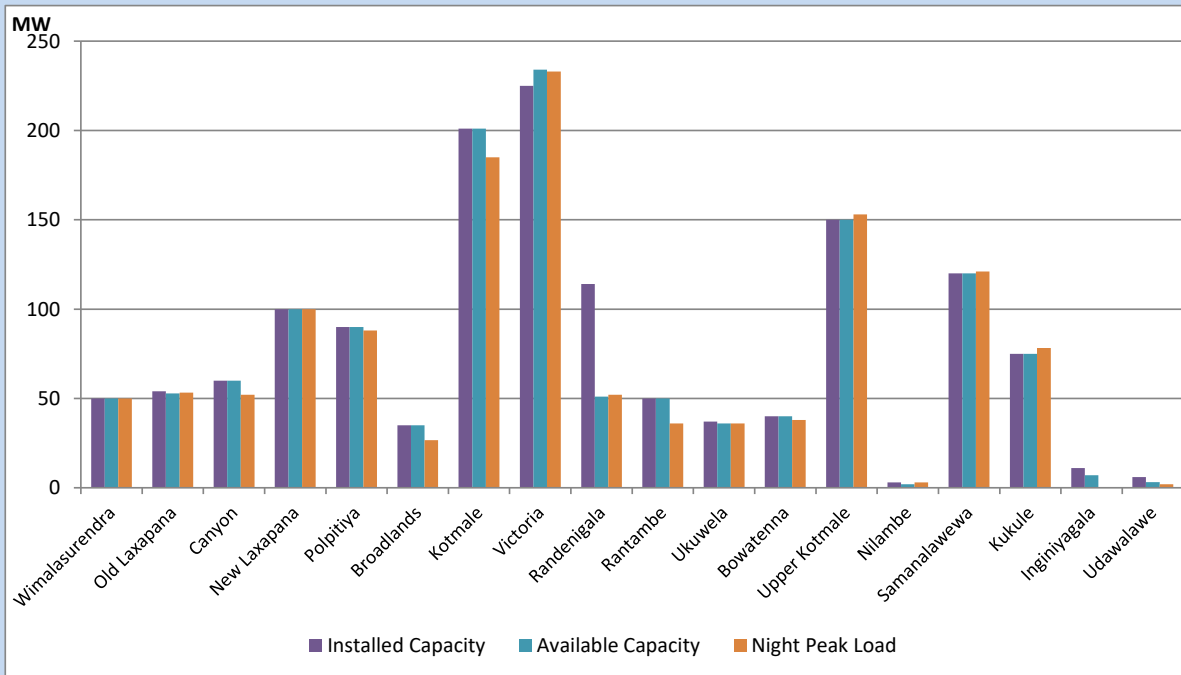


Available Generation is estimated based on plant availability at 6.00am on September 3, 2022
 Broadlands power plant is operating in the Commissioning Stage

September 3, 2022

Major Hydro Plant Loading at Night Peak

September 2, 2022



Note- Plant availability is recorded at 6.00 am on September 3, 2022
 Broadlands power plant is operating in the Commissioning Stage

Summary of Major Plant performance

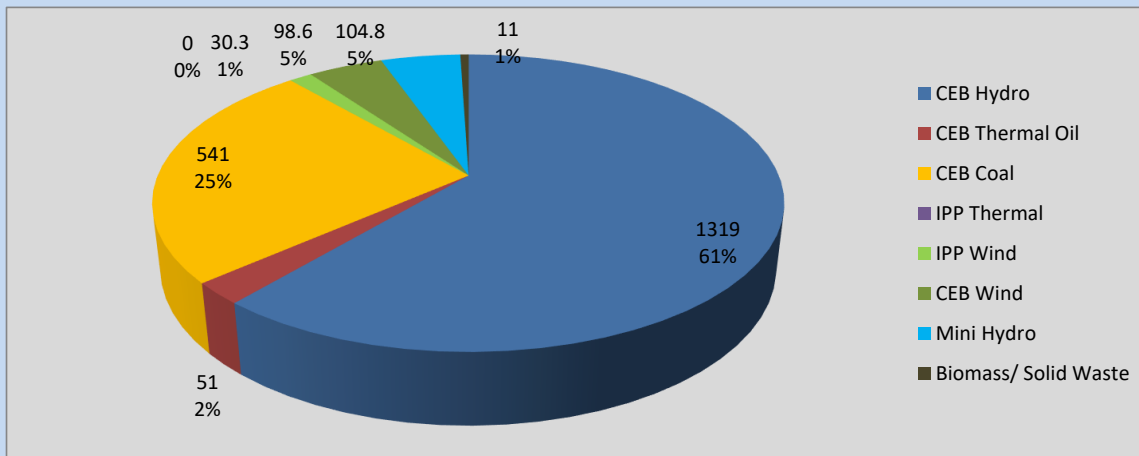
Plant	Installed Capacity	Plant Availability	Night peak Load	Plant Dispatch
	(MW)	(MW)	(MW)	(MWh)
Wimalasurendra	50	50	50	401
Old Laxapana	54	53	53	1,284
Canyon	60	60	52	1,029
New Laxapana	100	100	100	2,427
Polpitiya	90	90	88	2,078
Broadlands	35	35	27	619
Kotmale	201	201	185	1,210
Victoria	225	234	233	2,819
Randenigala	114	51	52	990
Rantambe	50	50	36	471
Ukuwela	37	36	36	636
Bowatenna	40	40	38	486
Upper Kotmale	150	150	153	3,368
Nilambe	3	2	3	75
Samanalawewa	120	120	121	852
Kukule	75	75	78	1,883
Inginiyagala	11	7	0	0
Udawalawe	6	3	2	27
Puttalam Coal I	270	270	268	5,384
Puttalam Coal II	270	0	0	0
Puttalam Coal III	270	270	273	5,498
KPS Small GTs	64	0	0	0
KPS GT 7	115	0	0	0
KCCP	161	0	0	0
Sapugaskanda A	70	34	0	0
Sapugaskanda B	70	63	0	0
Uthura Janani	26	24	23	14
Barge CEB	60	45	12	33
CEB-Thulhiriya	10	0	0	0
CEB-Kolonnawa	20	10	11	7
CEB-Mathugama	20	5	5	3
ACE Matara	24	24	0	0
Sojitz Kelanitissa	163	0	0	0
West Coast	270	270	0	0
ACE Embilipitiya	93	0	0	0
Total	3,397	2,372	2,144	38,281

Plant availability is the availability recorded at 6 am on

September 3, 2022

Contribution to the Night Peak in MW

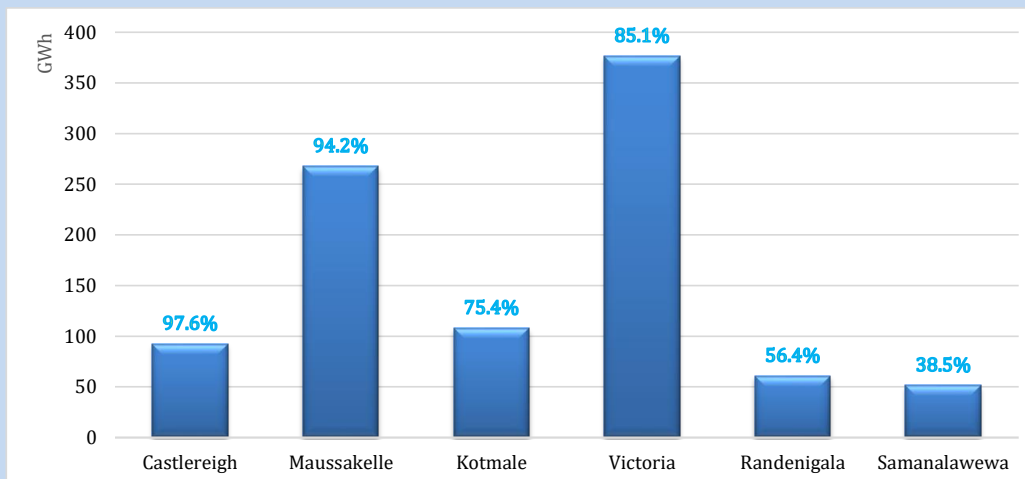
September 2, 2022



Night Peak*	2,155.9 MW
Day Peak	1,748.4 MW
Minimum Demand	1,038.9 MW

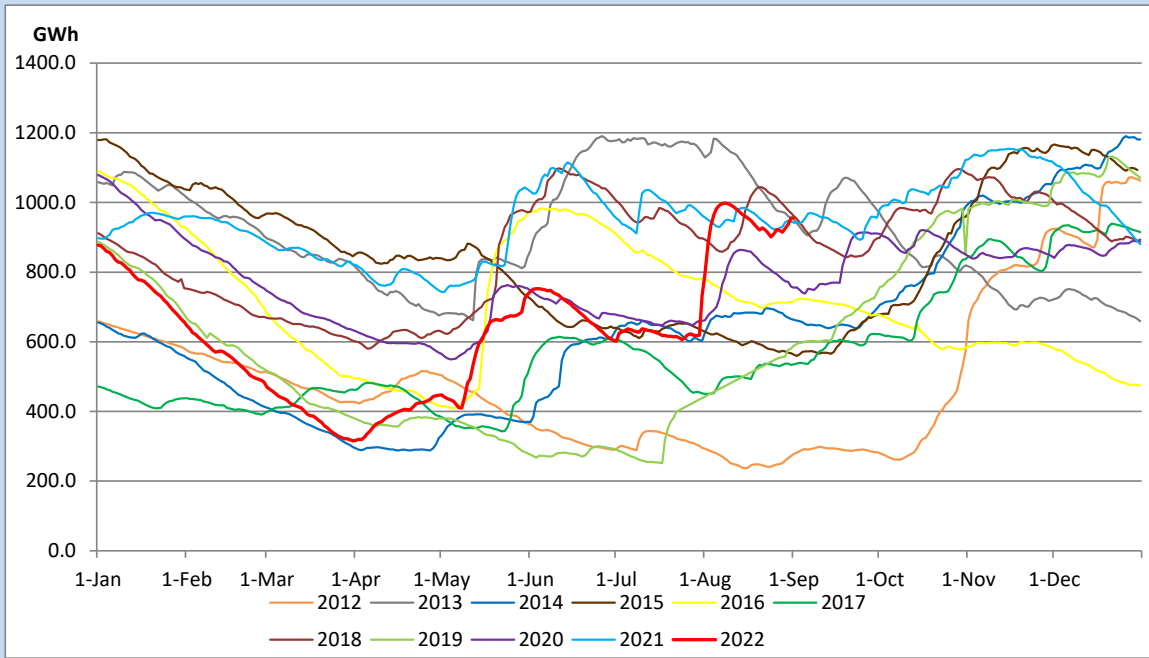
Above figures are excluding contribution from Roof Top Solar, 1MW solar, certain Wind plants and Mini Hydro plants

Reservoir Levels - as at 06.00 Hr on September 3, 2022

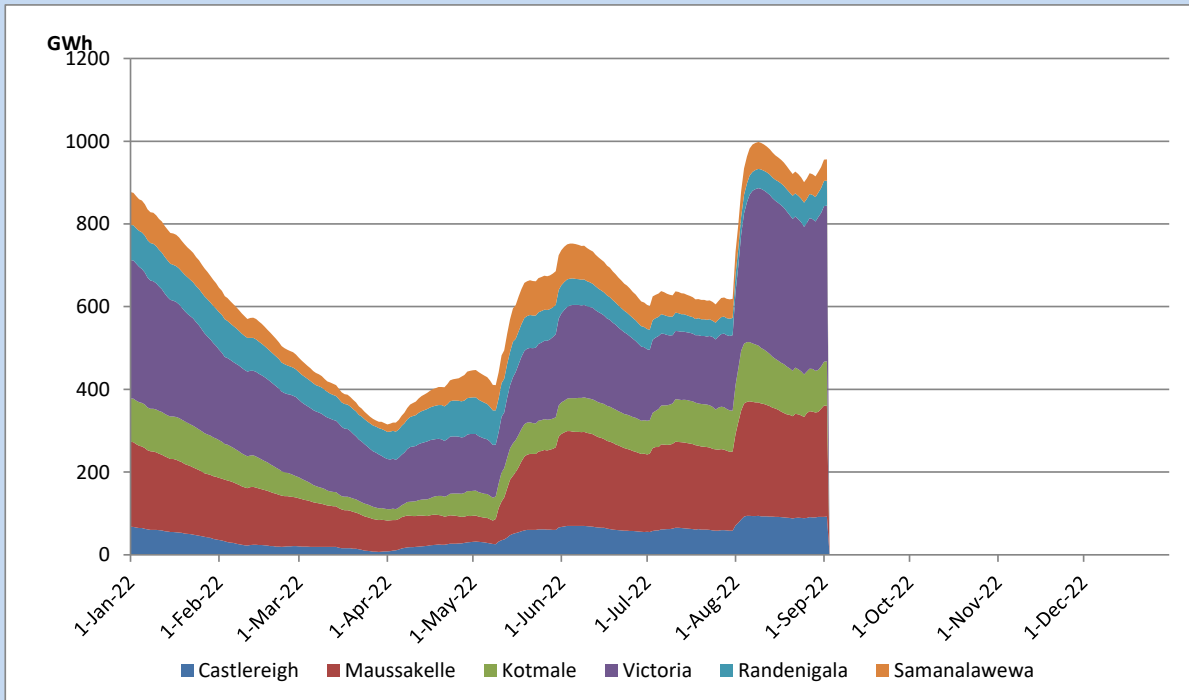


Total Reservoir Level	956.3 GWh
% of Total capacity	79.4%

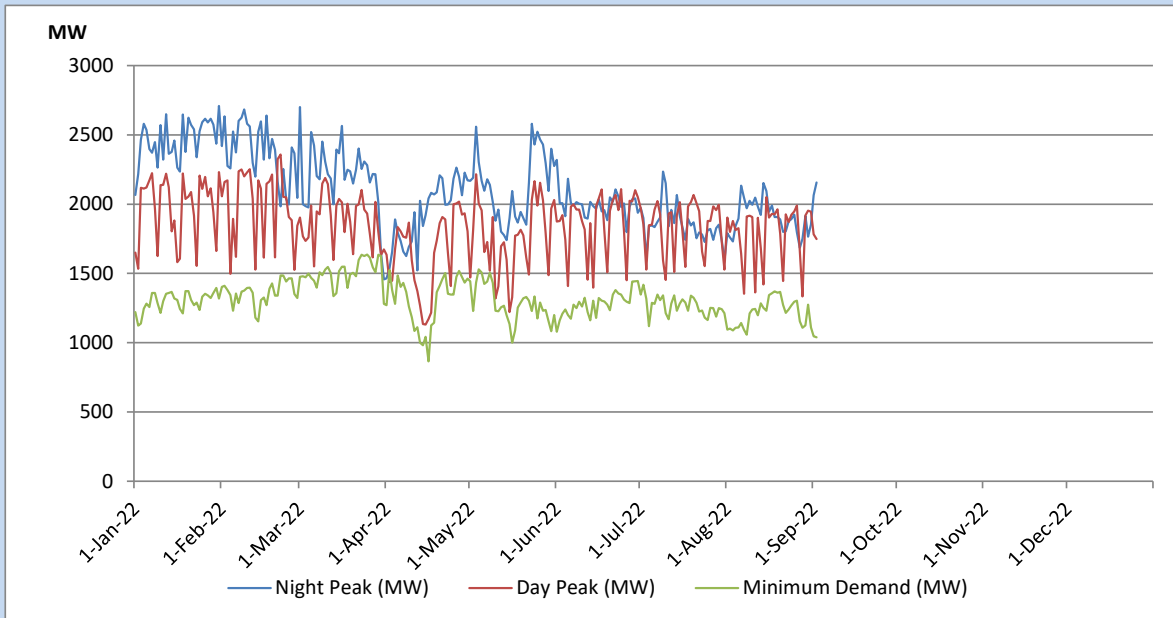
Comparison of Total Reservoir Storage Levels with Past Years



Variation of Major Hydro Reservoir Levels in the current year (GWh)



Variation of Demand during the current year

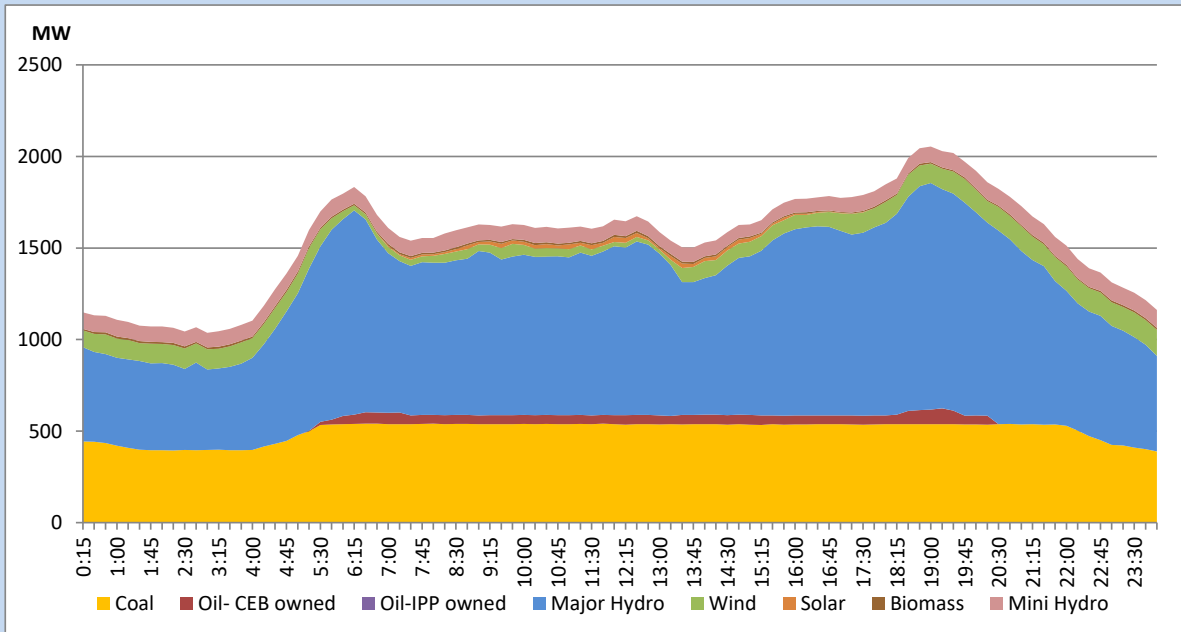


The above figures are excluding contribution from Roof Top Solar, 1MW solar, certain Wind plants and Mini Hydro plants

Daily Load Curve of the Previous day

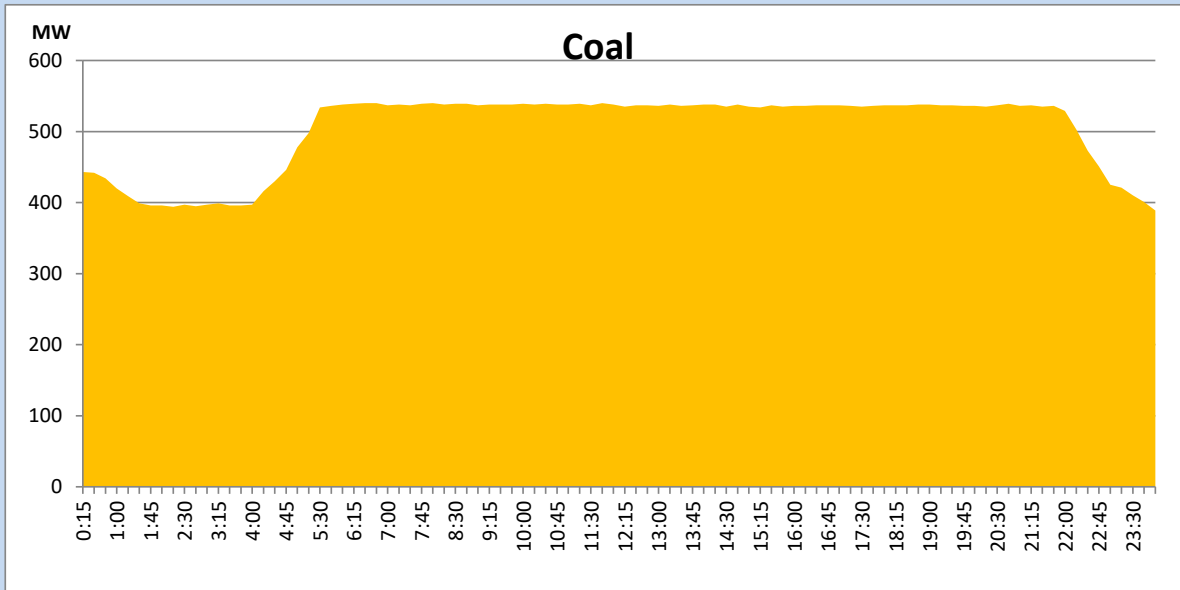
September 1, 2022

Solar and wind data is based on Telemetered Power Stations only



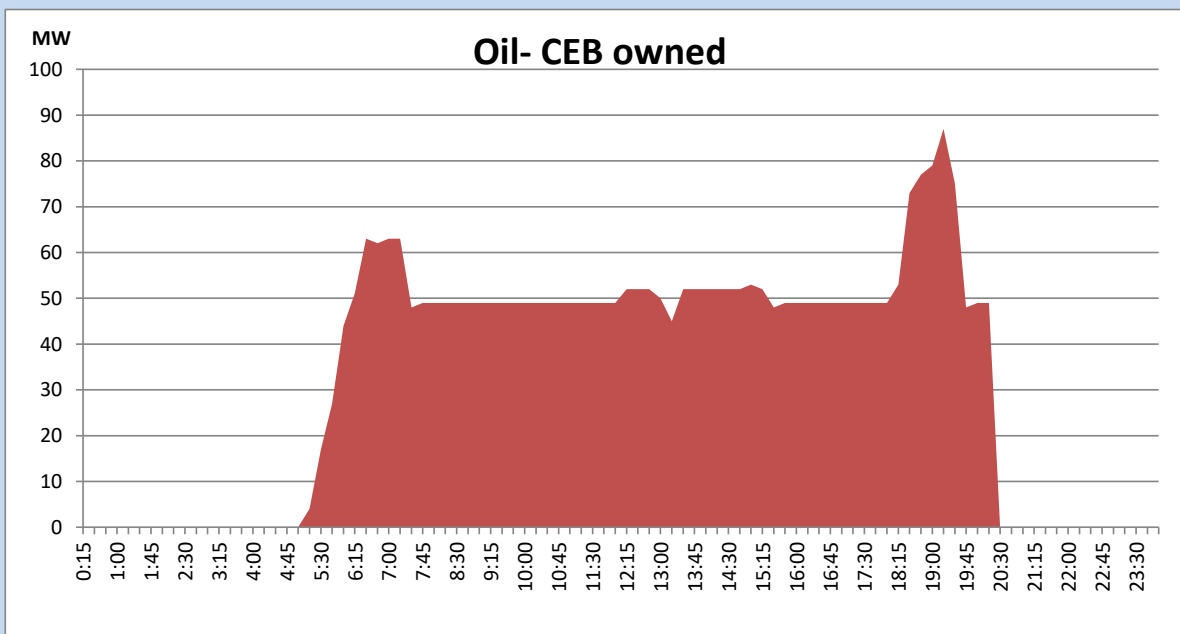
Coal Generation during the Previous day

September 1, 2022



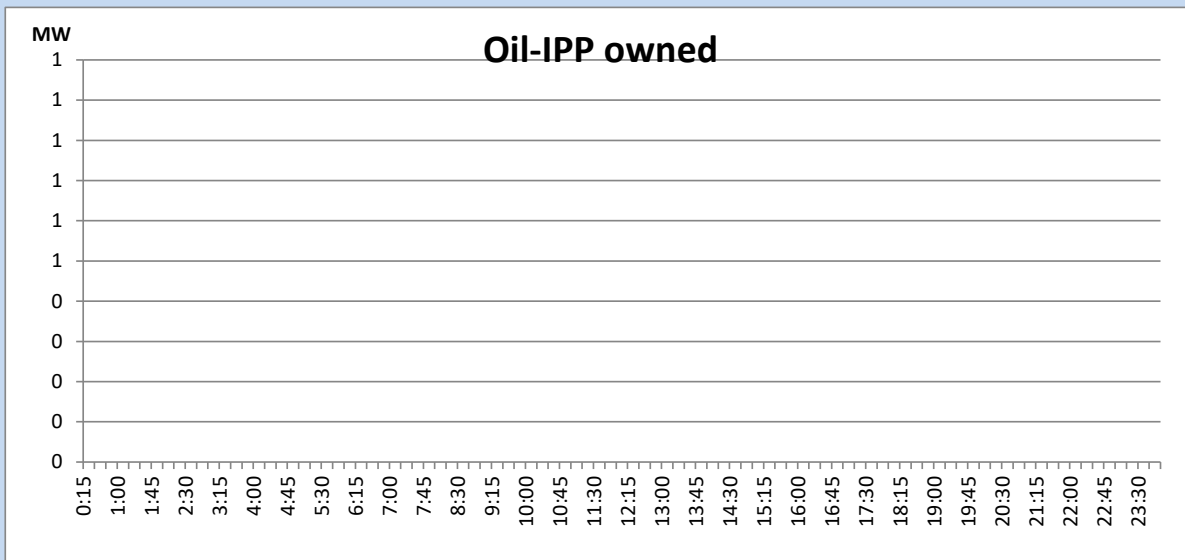
CEB Oil Plant Generation during the Previous day

September 1, 2022



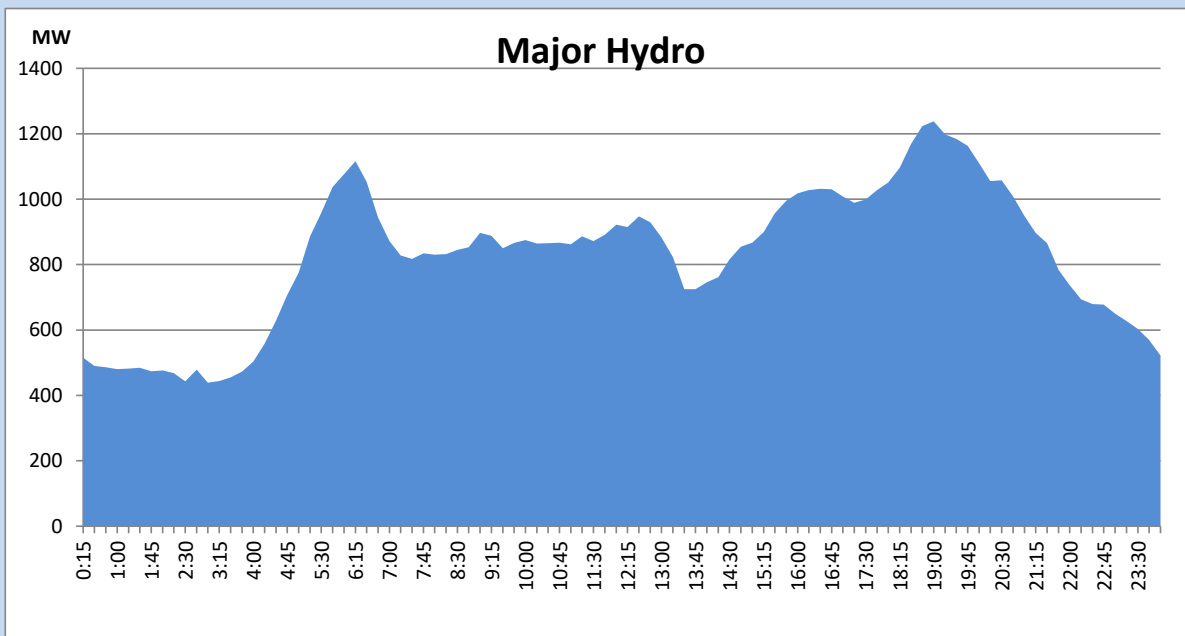
IPP Oil Plant Generation during the Previous day

September 1, 2022



Major Hydro Generation during the Previous day

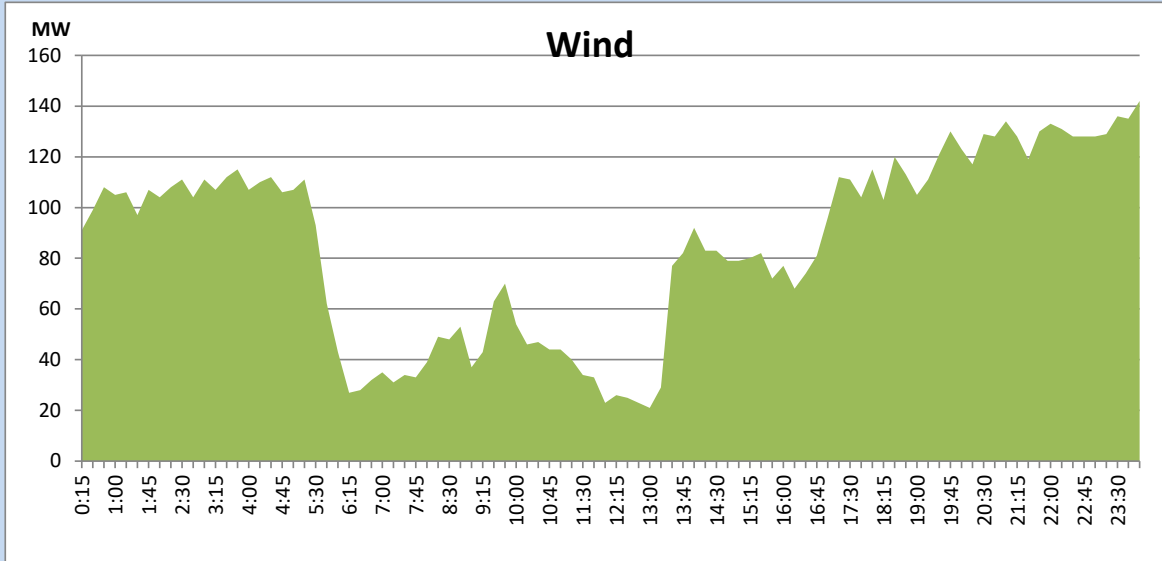
September 1, 2022



Wind Generation during the Previous day

September 1, 2022

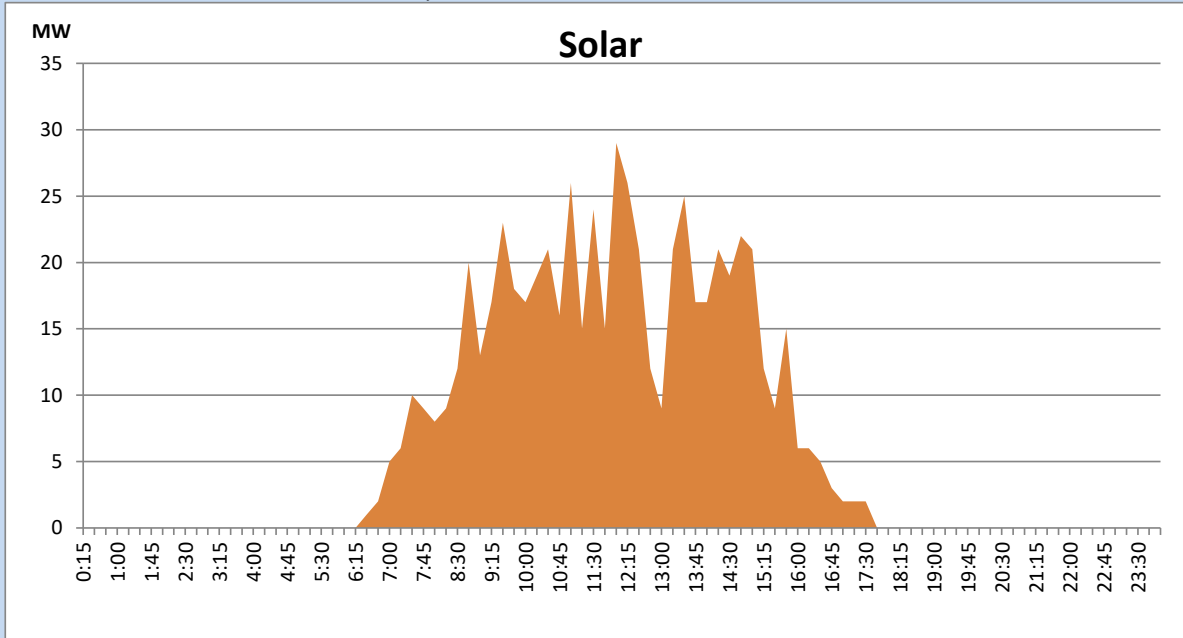
Based on Telemetered Power Stations only



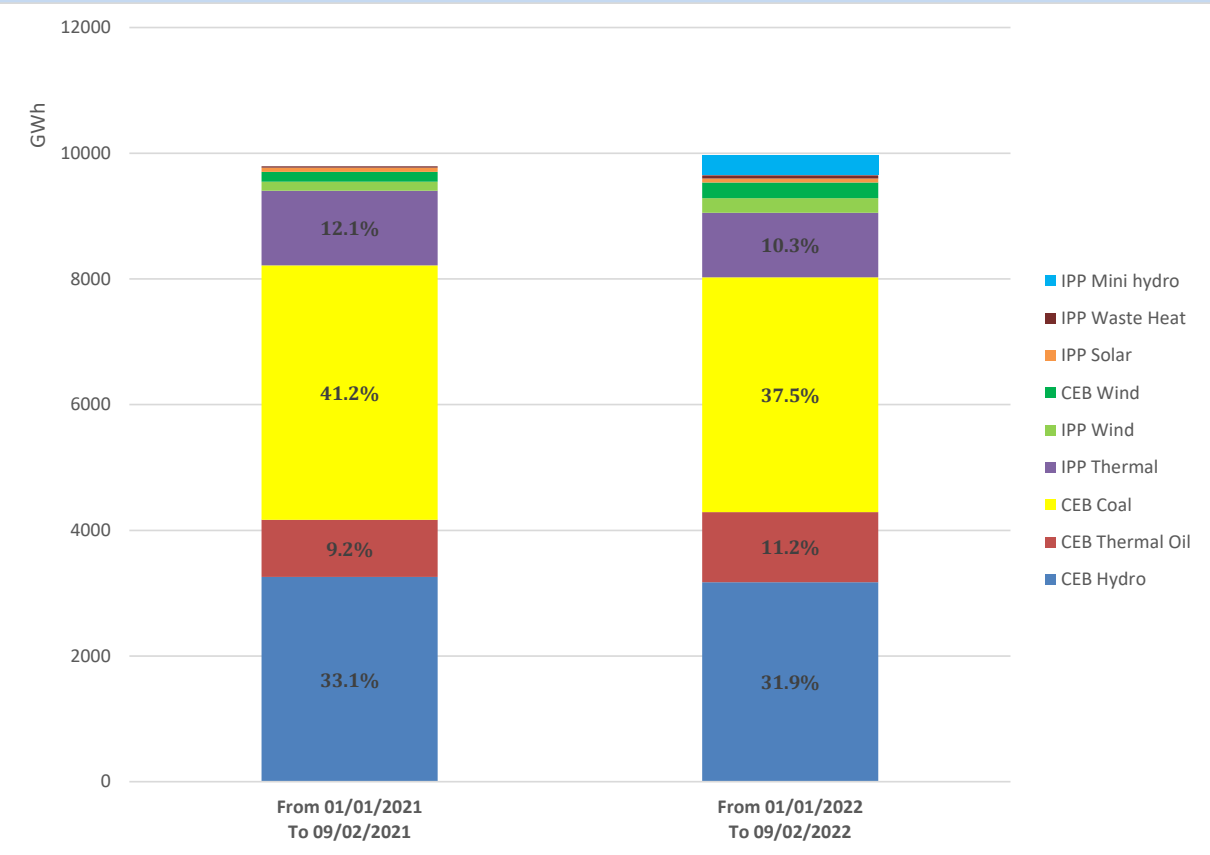
Solar Generation during the Previous day

September 1, 2022

Based on Telemetered Power Stations only



Cumulative Dispatch Comparison with Last Year



Thermal Plant Fuel types

Power Station	Primary Fuel
CEB Thermal	
Sapugaskanda 1	Heavy Fuel
Sapugaskanda 2	Heavy Fuel
Kelanitissa Small Gas Turbines	Auto Diesel
GT 7 - Kelanitissa	Auto Diesel
Kelanitissa CCY	Naphtha or Diesel
Lakvijaya 1	Coal
Lakvijaya 2	Coal
Lakvijaya 3	Coal
Uthuru Janani	Heavy Fuel
Barge CEB	Heavy Fuel

Power Station	Primary Fuel
Private Thermal	
Sojitz - Kelanitissa	Auto Diesel
West Coast	Auto Diesel / Heavy Fuel
ACE Matara	Heavy Fuel
ACE Embilipitiya	Heavy Fuel

Major Incidents during the day -as reported by CEB morning of

September 3, 2022

- 1) Rotational manual load shedding was carried out from 18:00 hrs to 19:20 hrs.
- 2) Norton pond & Canyon pond spilled intermittently and spilling stopped at 10:15 hrs & 23:33 hrs respectively.
- 3) Kukule spilling stopped at 20:21 hrs.
- 4) Laxapana pond spilled intermittently and spilling stopped at 04:00 hrs on 03.09.2022.
- 5) Trinco 132/33kV T/F 01 tripped from 33kV side at 07:55 hrs due to operation of O/C & E/F protection. Same time Trinco 33kV B/S C/B tripped along with Feeder 05, causing Trinco 33kV B/S-1 dead. All affected feeders and 33kV B/S CB were normalized by 8:42 hrs. Trinco T/F 01 was restored at 10:16 hrs.