

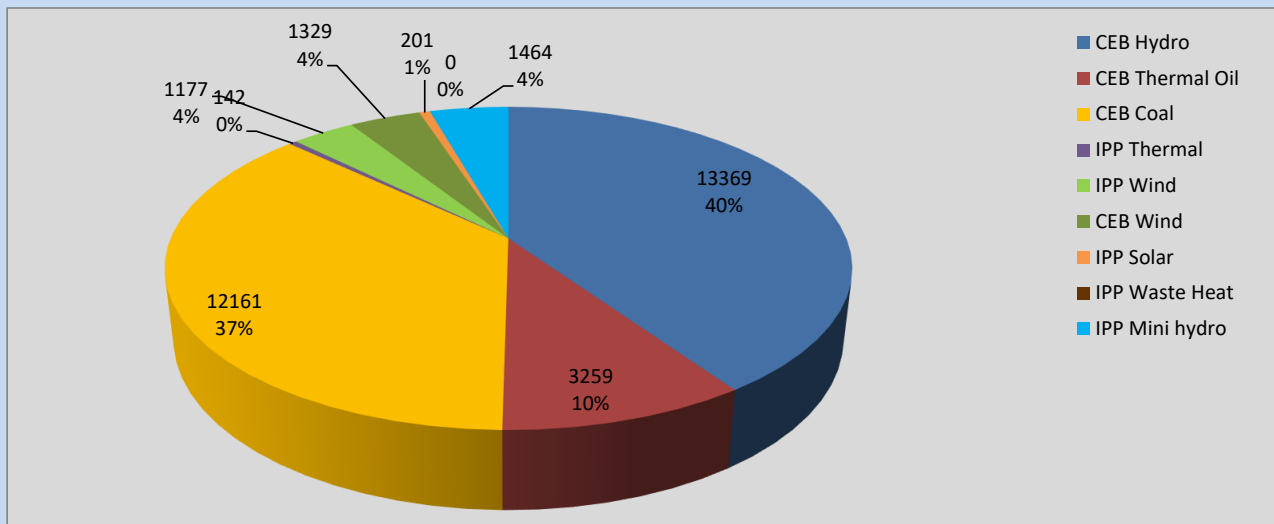
Generation and Reservoirs Statistics

July 31, 2022



PUBLIC UTILITIES COMMISSION OF SRI LANKA

Daily Generation Mix in MWh



Total Generation **33,102 MWh**

Note: Above data is excluding contribution from Roof Top Solar, 1MW Solar and certain Mini Hydro plants

Cumulative Dispatch

Note: Following data is Excluding contribution from Roof Top Solar, 1MW solar and Mini Hydro plants

For Current Month

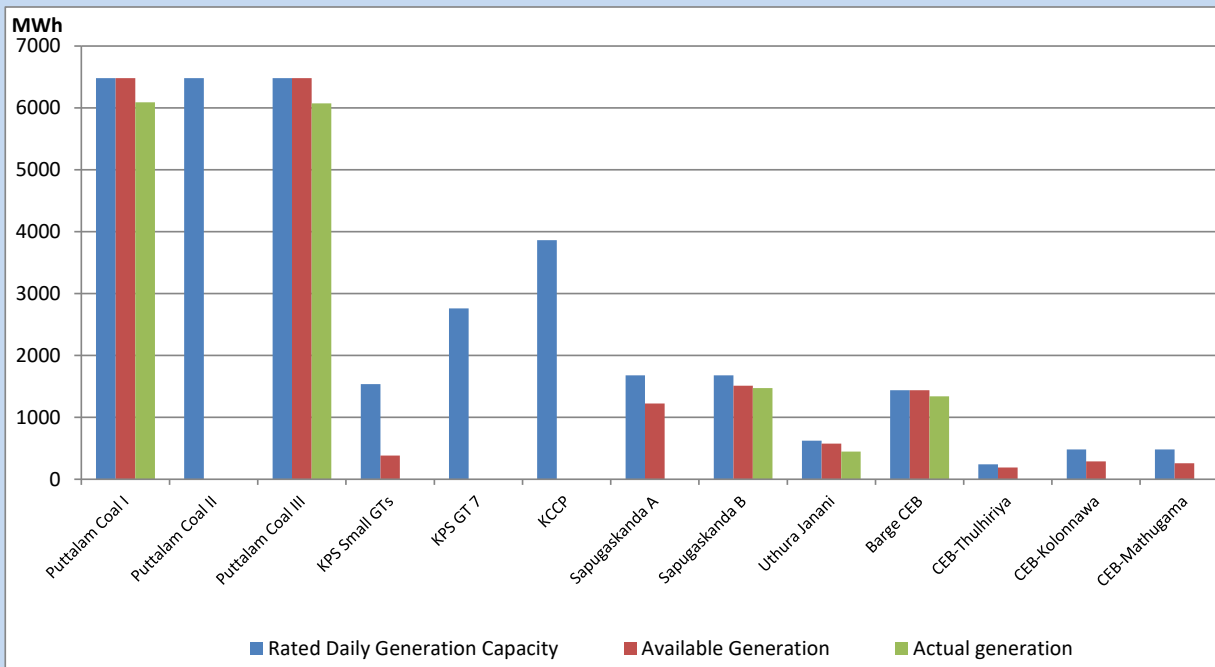
Category	Dispatch (GWh)	Percentage
CEB Hydro	446.82	37.79%
CEB Thermal Oil	115.25	9.75%
CEB Coal	391.40	33.11%
IPP Thermal	100.87	8.53%
SPP Wind	34.05	2.88%
CEB Wind	35.36	2.99%
SPP Solar	7.52	0.64%
SPP Solid Waste	5.57	0.47%
Mini Hydro	45.39	3.84%
Total	1,182.23	

For Current Year

Category	Dispatch (GWh)	Percentage
CEB Hydro	2,498.2	28.75%
CEB Thermal Oil	1,055.4	12.15%
CEB Coal	3,419.7	39.35%
IPP Thermal	972.4	11.19%
SPP Wind	184.0	2.12%
CEB Wind	201.3	2.32%
SPP Solar	54.0	0.62%
SPP Solid Waste	44.1	0.51%
Mini Hydro	261.0	3.00%
Total	8,689.6	

CEB owned Thermal Plant Dispatch

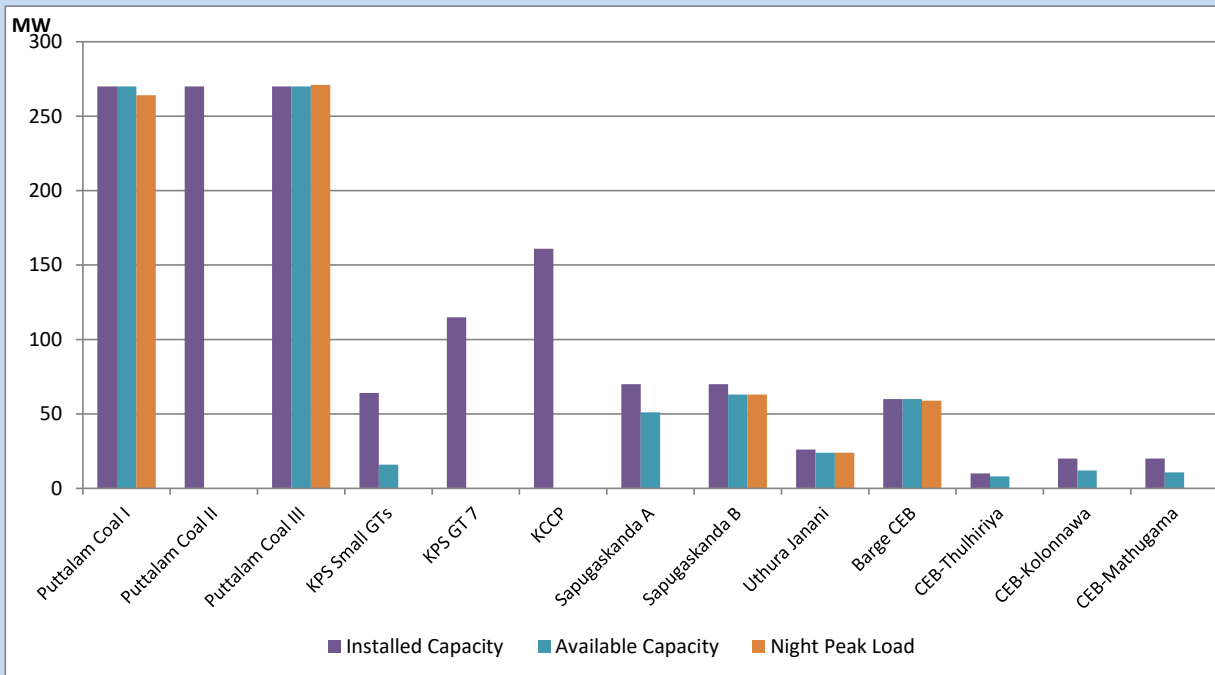
July 31, 2022



Available Generation is estimated based on plant availability at 6.00am on

August 1, 2022

CEB owned Thermal Plant Loading at the Night Peak



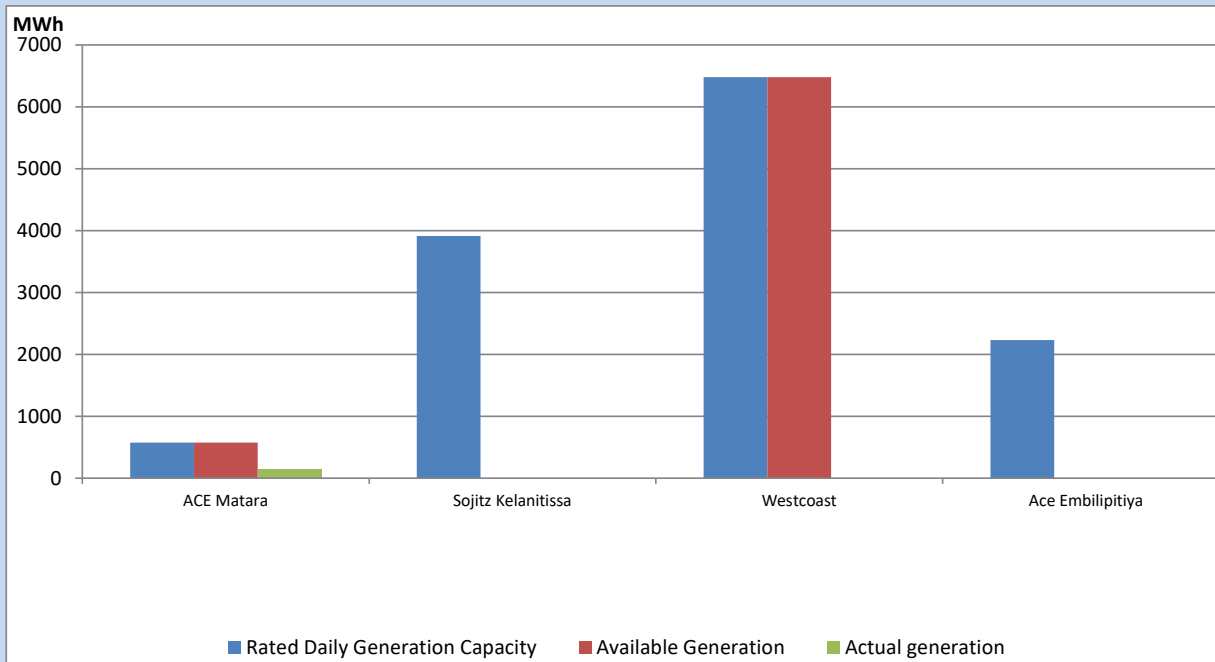
Note- Plant availability is recorded at 6.00 am on

August 1, 2022

IPP owned Thermal Plant Dispatch

July 31, 2022

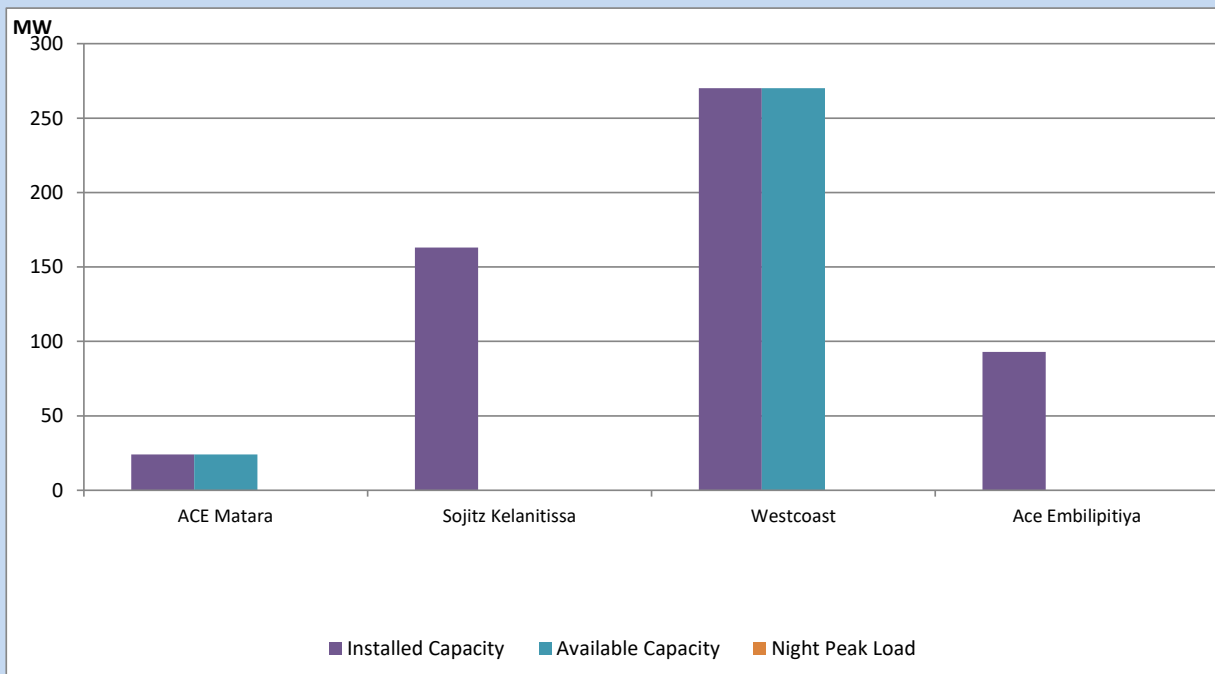
Asia Power, V Power Pallekale, Vpower Galle, V Power Horana, Vpower Hambantota, Vpower Valachchena and Altaqa Mahiyanganaya are not available due to expiration of PPAs



Available Generation is estimated based on plant availability at 6.00am on

August 1, 2022

IPP owned Thermal Plant Loading at the Night Peak

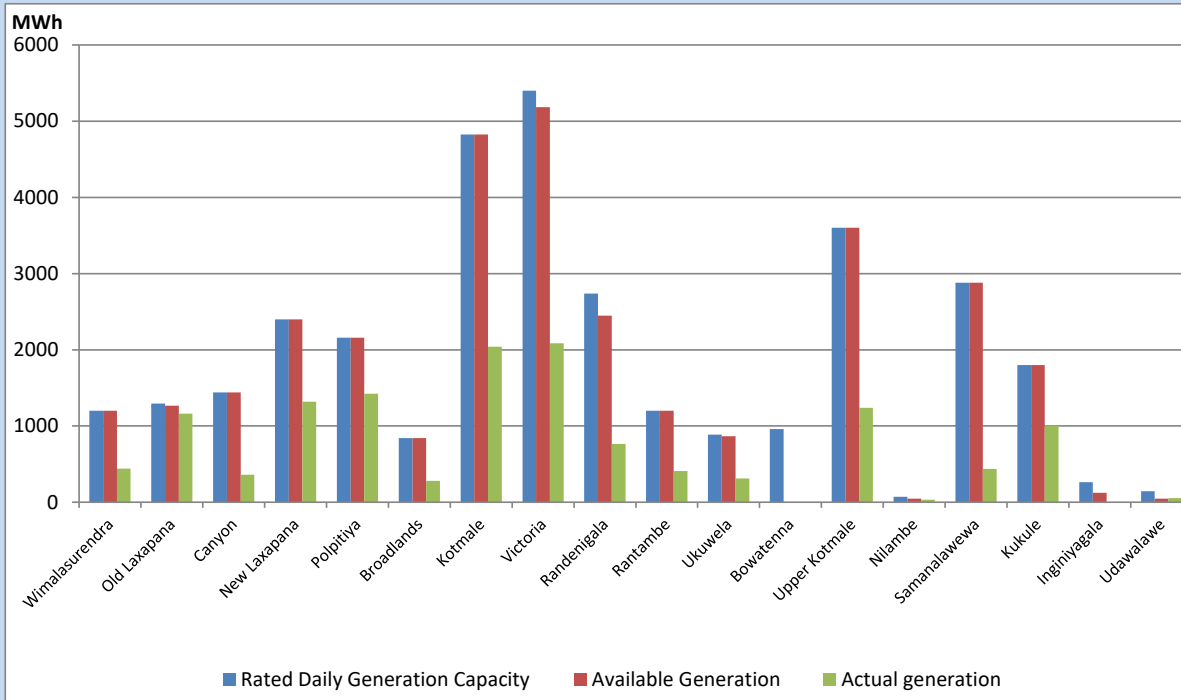


Note- Plant availability is recorded at 6.00 am on

August 1, 2022

Major Hydro Plant Dispatch

July 31, 2022

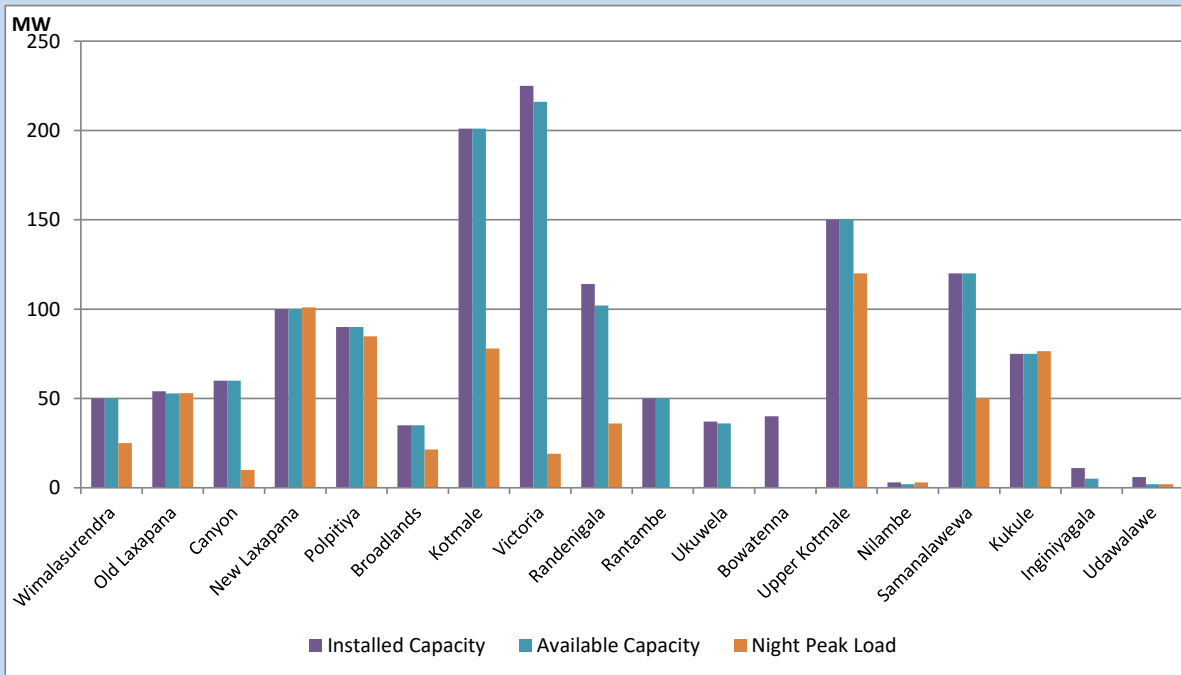


Available Generation is estimated based on plant availability at 6.00am on August 1, 2022
 Broadlands power plant is operating in the Commissioning Stage

August 1, 2022

Major Hydro Plant Loading at Night Peak

July 31, 2022



Note- Plant availability is recorded at 6.00 am on August 1, 2022
 Broadlands power plant is operating in the Commissioning Stage

Summary of Major Plant performance

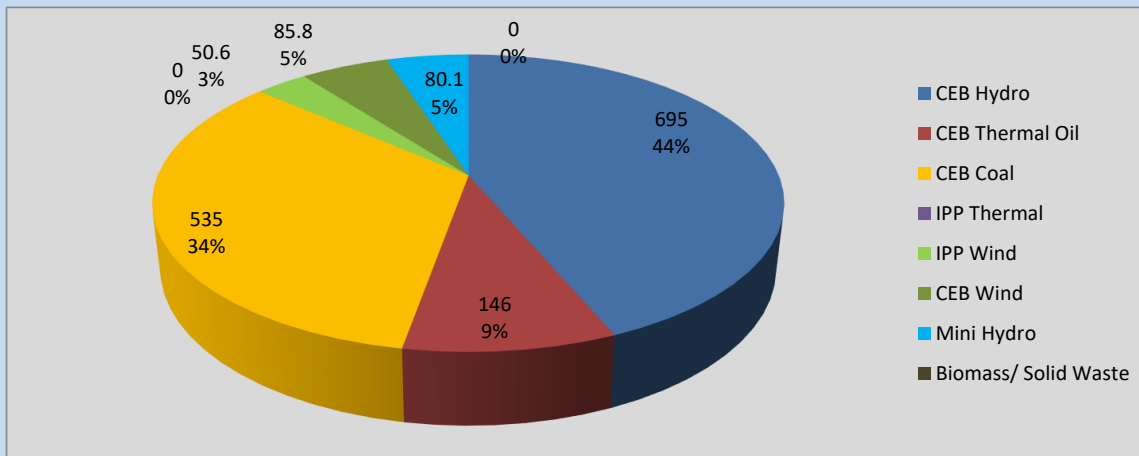
Plant	Installed Capacity	Plant Availability	Night peak Load	Plant Dispatch
	(MW)	(MW)	(MW)	(MWh)
Wimalasurendra	50	50	25	442
Old Laxapana	54	53	53	1,161
Canyon	60	60	10	362
New Laxapana	100	100	101	1,320
Polpitiya	90	90	85	1,425
Broadlands	35	35	21	281
Kotmale	201	201	78	2,040
Victoria	225	216	19	2,087
Randenigala	114	102	36	763
Rantambe	50	50	0	408
Ukuwela	37	36	0	312
Bowatenna	40	0	0	0
Upper Kotmale	150	150	120	1,240
Nilambe	3	2	3	33
Samanalawewa	120	120	50	436
Kukule	75	75	77	1,006
Inginiyagala	11	5	0	0
Udawalawe	6	2	2	53
Puttalam Coal I	270	270	264	6,089
Puttalam Coal II	270	0	0	0
Puttalam Coal III	270	270	271	6,072
KPS Small GTs	64	16	0	0
KPS GT 7	115	0	0	0
KCCP	161	0	0	0
Sapugaskanda A	70	51	0	0
Sapugaskanda B	70	63	63	1,472
Uthura Janani	26	24	24	447
Barge CEB	60	60	59	1,340
CEB-Thulhiriya	10	8	0	0
CEB-Kolonnawa	20	12	0	0
CEB-Mathugama	20	11	0	0
ACE Matara	24	24	0	142
Sojitz Kelanitissa	163	0	0	0
West Coast	270	270	0	0
ACE Embilipitiya	93	0	0	0
Total	3,397	2,426	1,577	33,102

Plant availability is the availability recorded at 6 am on

August 1, 2022

Contribution to the Night Peak in MW

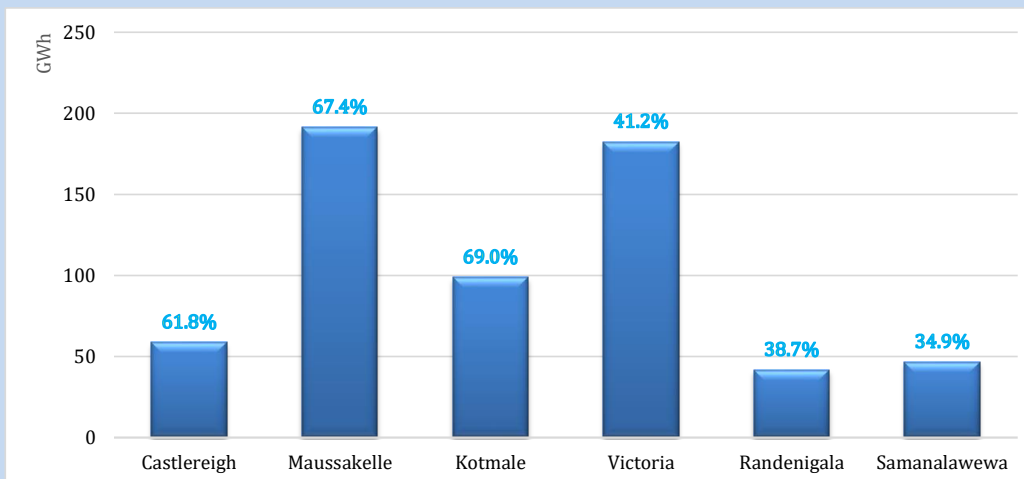
July 31, 2022



Night Peak*	1,592.2 MW
Day Peak	1,527.4 MW
Minimum Demand	1,213.5 MW

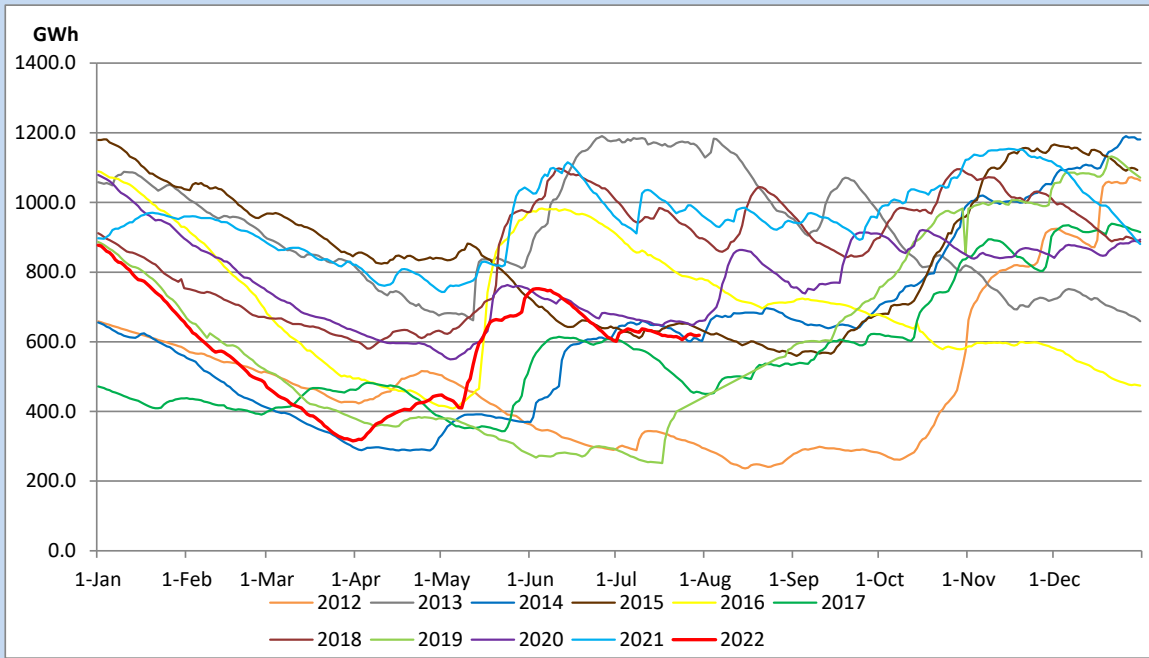
Above figures are excluding contribution from Roof Top Solar, 1MW solar, certain Wind plants and Mini Hydro plants

Reservoir Levels - as at 06.00 Hr on August 1, 2022

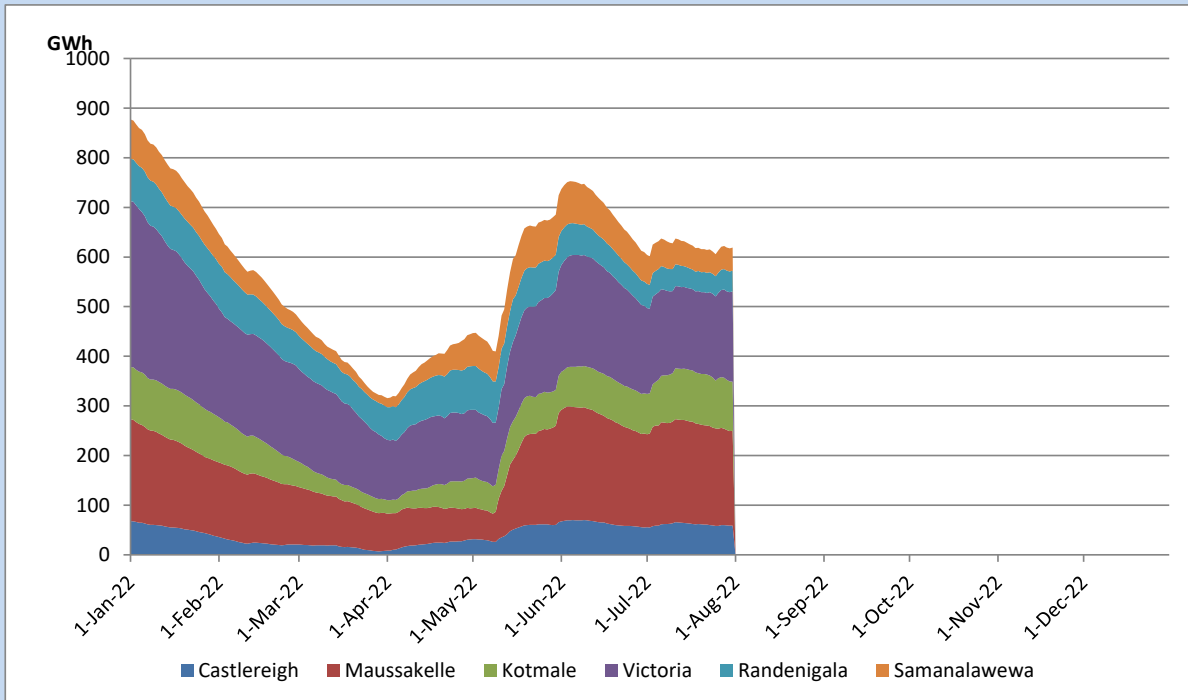


Total Reservoir Level	619.1 GWh
% of Total capacity	51.4%

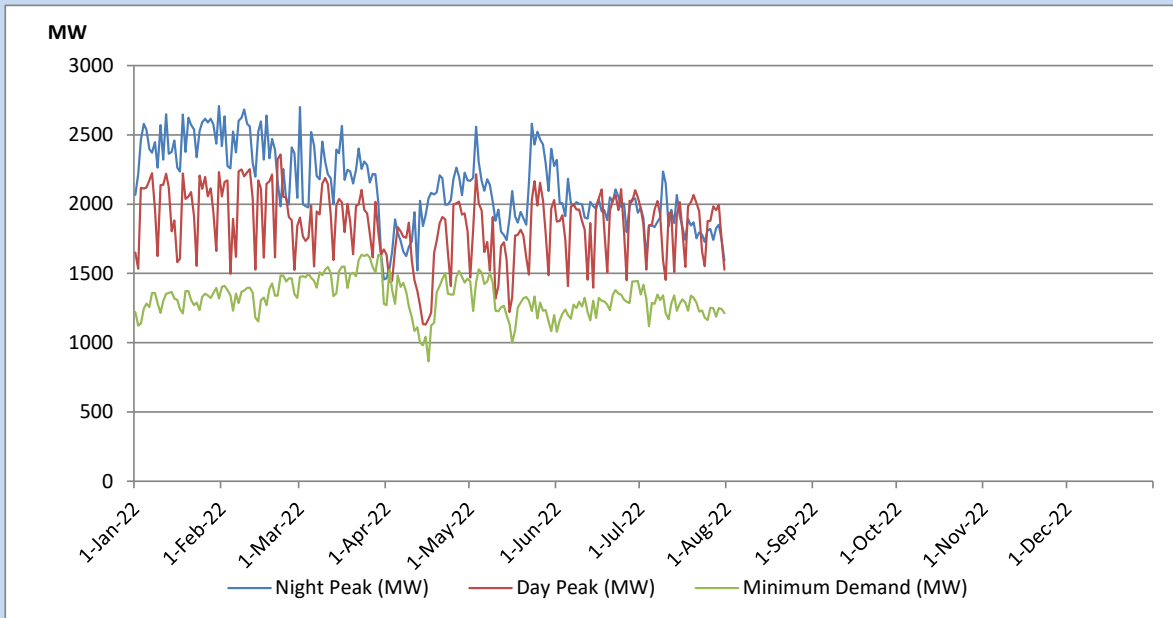
Comparison of Total Reservoir Storage Levels with Past Years



Variation of Major Hydro Reservoir Levels in the current year (GWh)



Variation of Demand during the current year

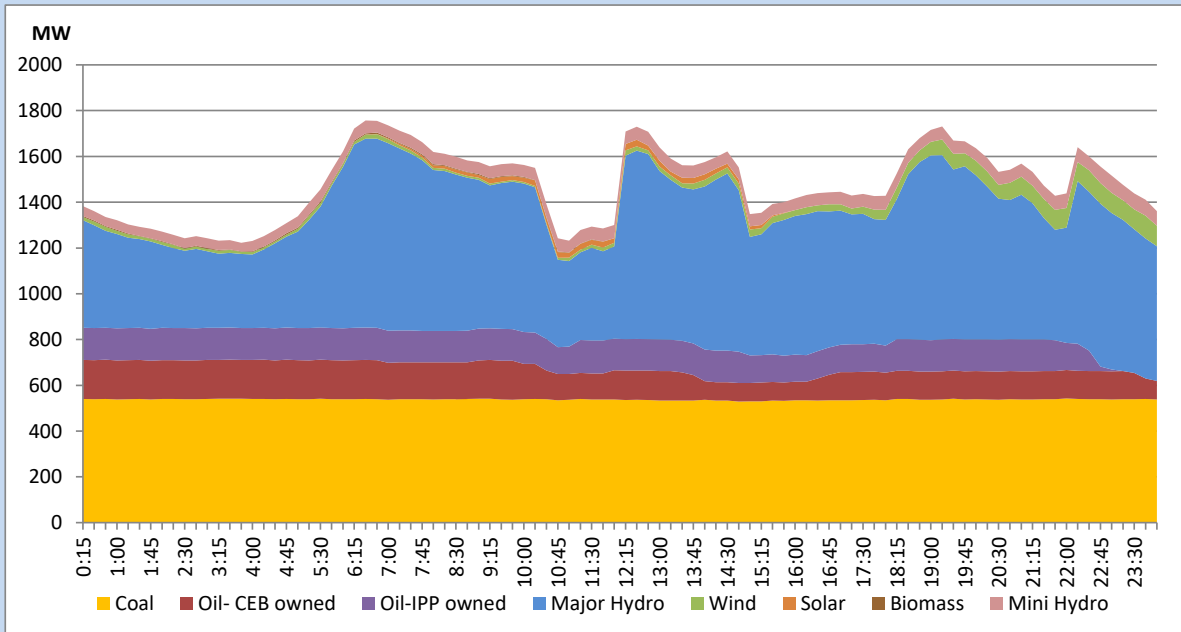


The above figures are excluding contribution from Roof Top Solar, 1MW solar, certain Wind plants and Mini Hydro plants

Daily Load Curve of the Previous day

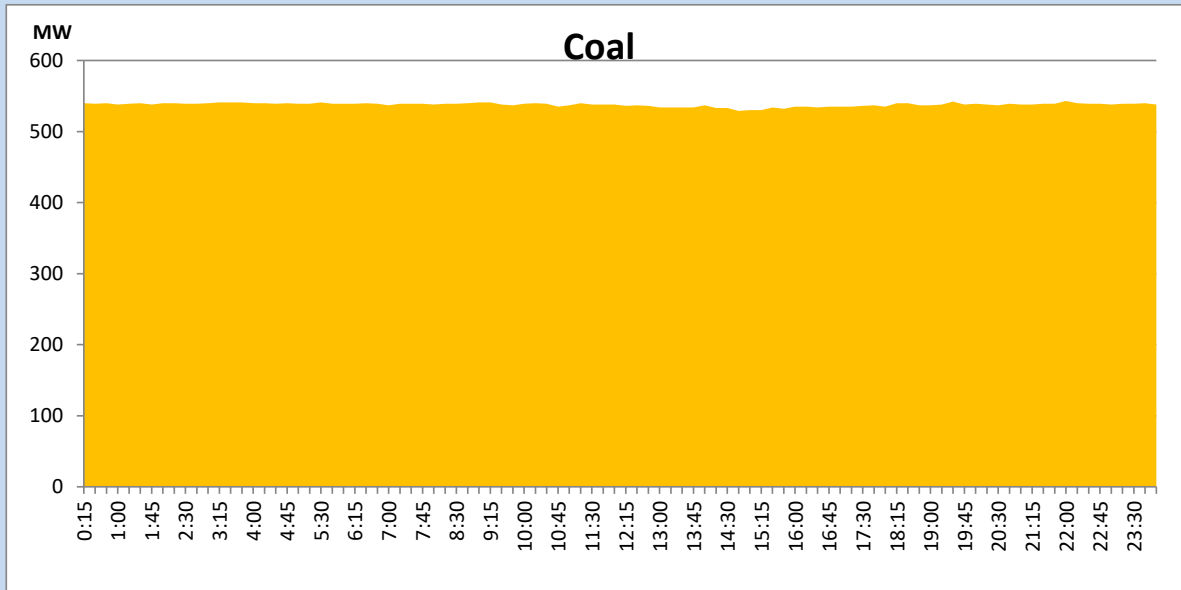
July 30, 2022

Solar and wind data is based on Telemetered Power Stations only



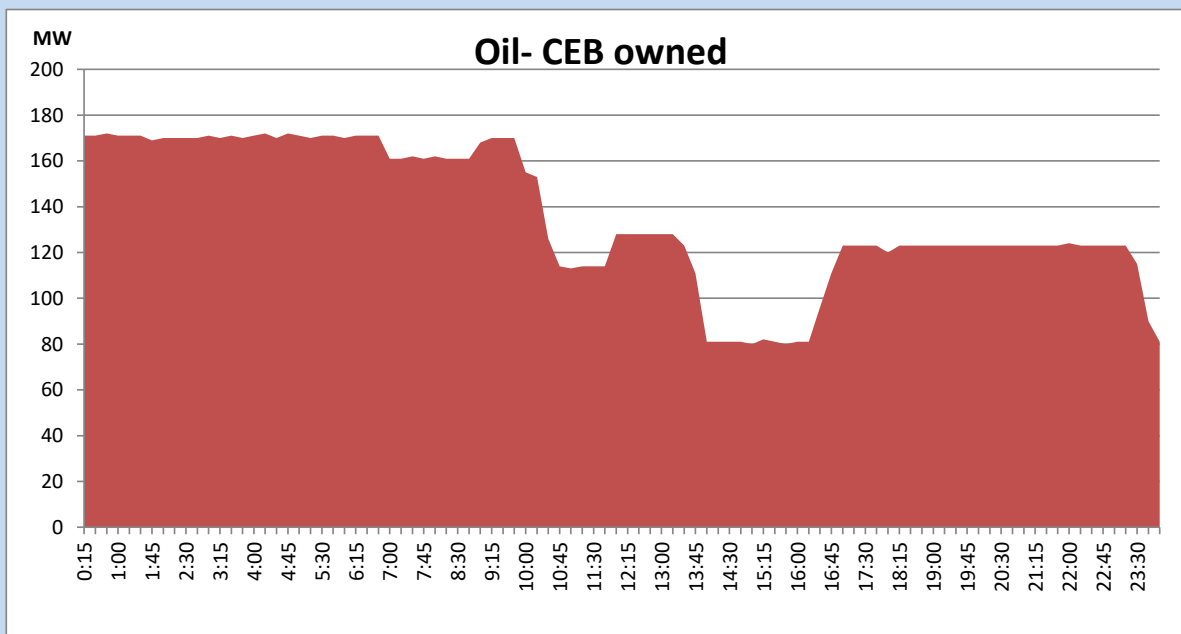
Coal Generation during the Previous day

July 30, 2022



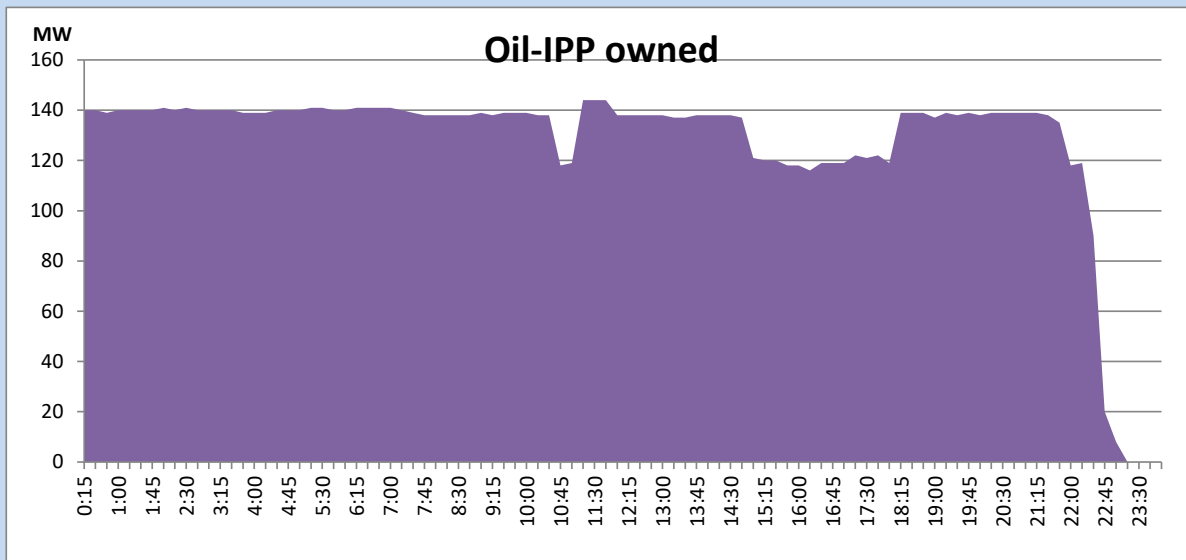
CEB Oil Plant Generation during the Previous day

July 30, 2022



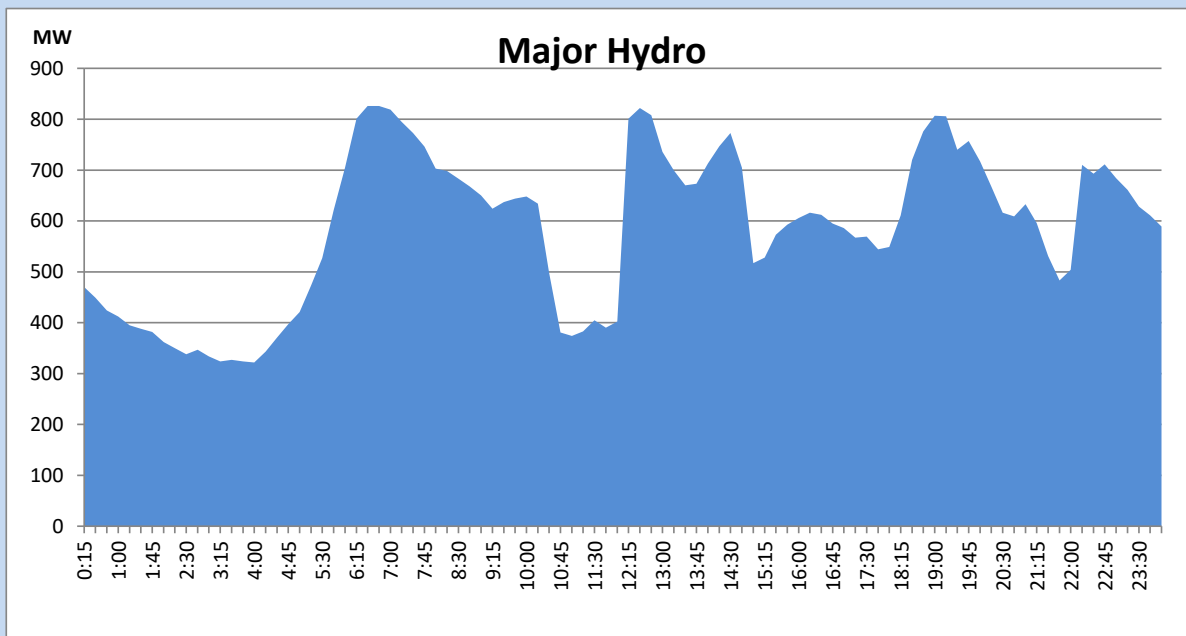
IPP Oil Plant Generation during the Previous day

July 30, 2022



Major Hydro Generation during the Previous day

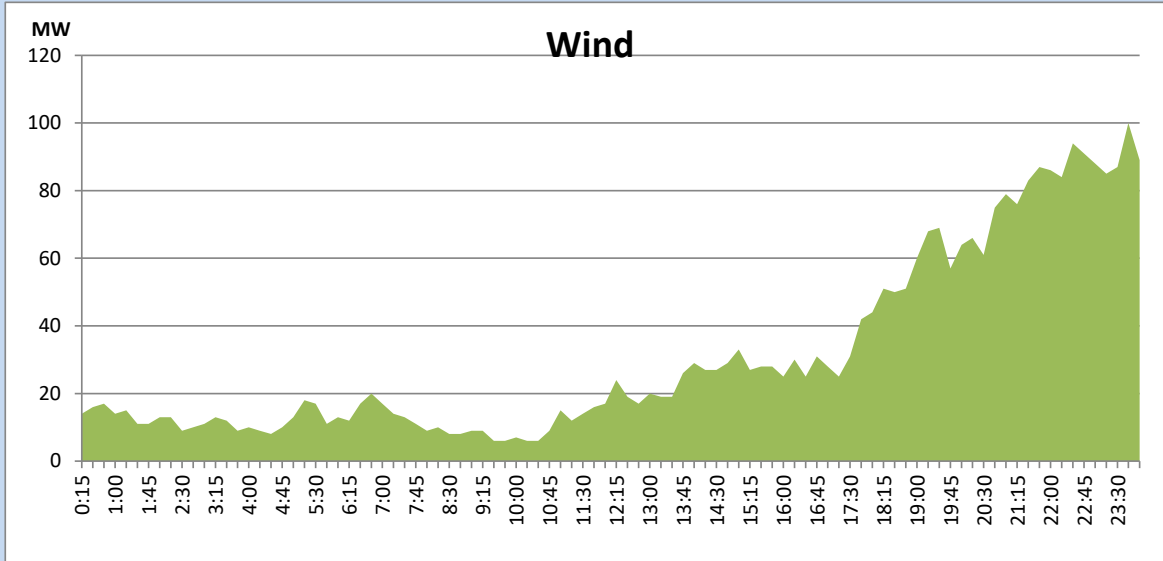
July 30, 2022



Wind Generation during the Previous day

July 30, 2022

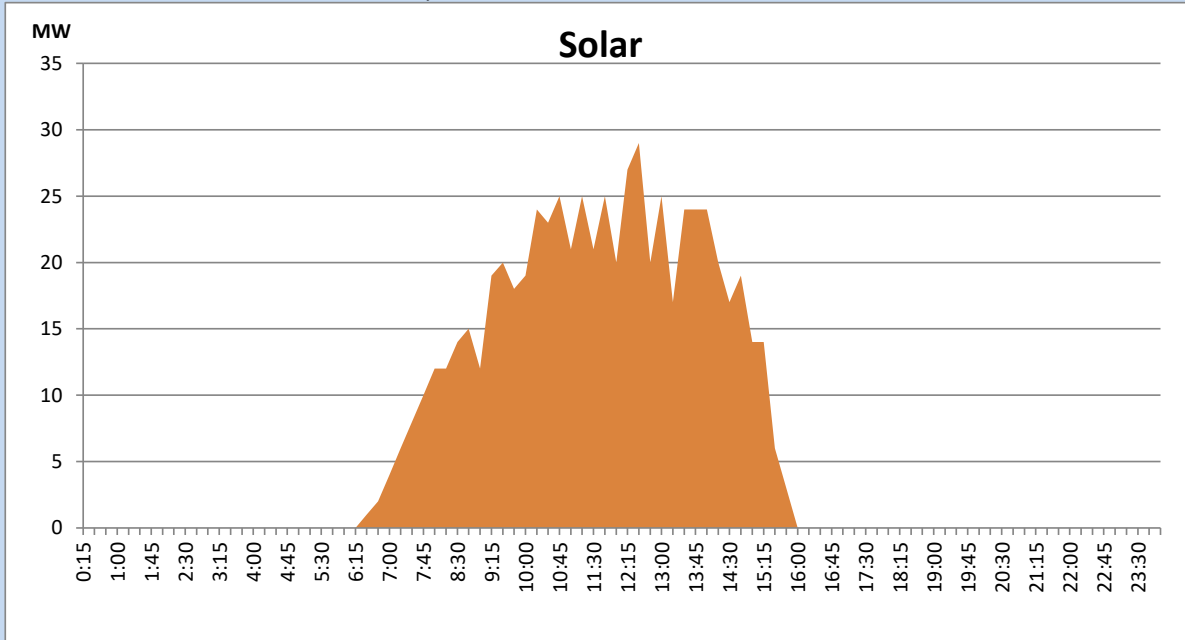
Based on Telemetered Power Stations only



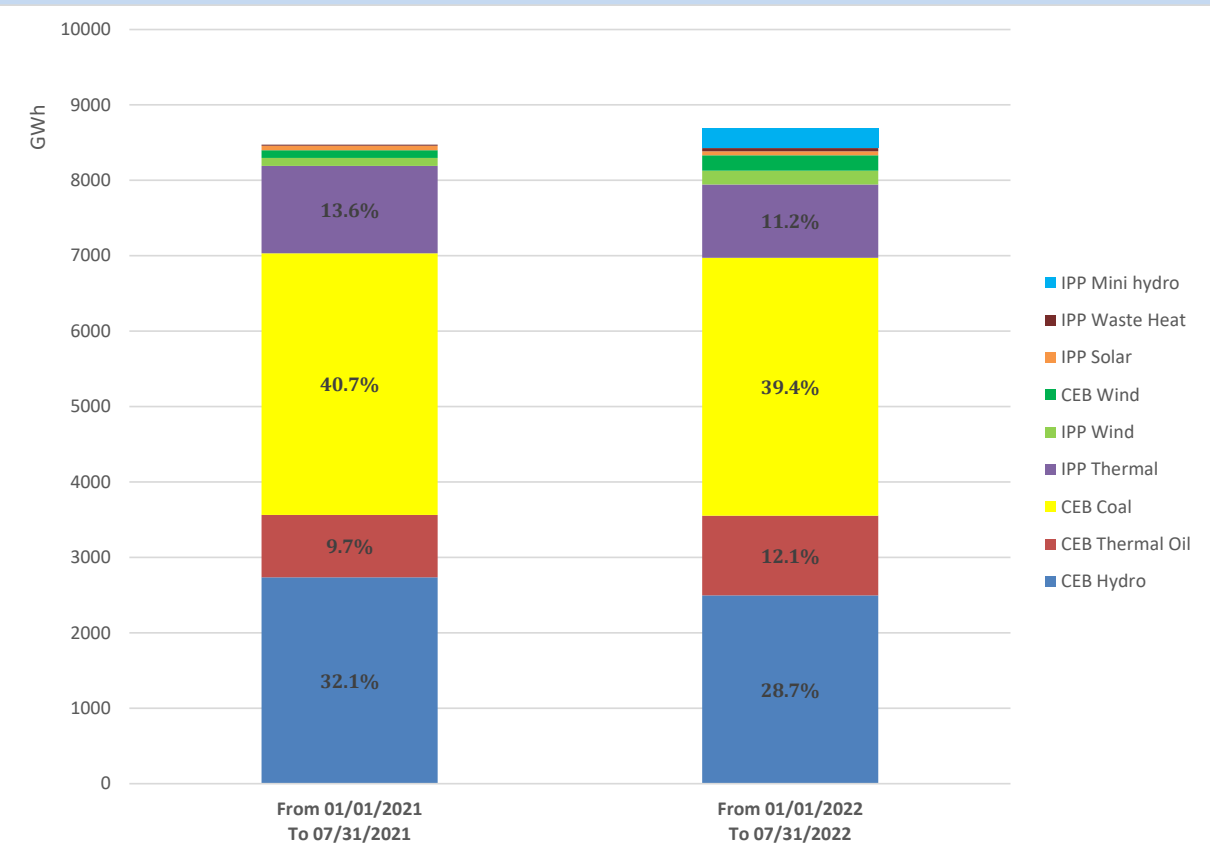
Solar Generation during the Previous day

July 30, 2022

Based on Telemetered Power Stations only



Cumulative Dispatch Comparison with Last Year



Thermal Plant Fuel types

Power Station	Primary Fuel
CEB Thermal	
Sapugaskanda 1	Heavy Fuel
Sapugaskanda 2	Heavy Fuel
Kelanitissa Small Gas Turbines	Auto Diesel
GT 7 - Kelanitissa	Auto Diesel
Kelanitissa CCY	Naphtha or Diesel
Lakvijaya 1	Coal
Lakvijaya 2	Coal
Lakvijaya 3	Coal
Uthuru Janani	Heavy Fuel
Barge CEB	Heavy Fuel

Power Station	Primary Fuel
Private Thermal	
Sojitz - Kelanitissa	Auto Diesel
West Coast	Auto Diesel / Heavy Fuel
ACE Matara	Heavy Fuel
ACE Embilipitiya	Heavy Fuel

Major Incidents during the day -as reported by CEB morning of

August 1, 2022

- 1) Rotational manual load shedding was carried out from 10:20 hrs to 12:00 hrs and 14:40 hrs to 22:00 hrs.
- 2) Ampara - Monaragala cct tripped from both ends at 12:04hrs due to operation of directional E/F protection causing Monaragala GSS to be dead. The cct was normalized at 12:23hrs and all the affected feeders were normalized by 12:25hrs.
- 3) Kelanitissa - Biyagama 220kV cct 02 which was manually switched off on 27/07/2022 , normalized at 15:51hrs.