

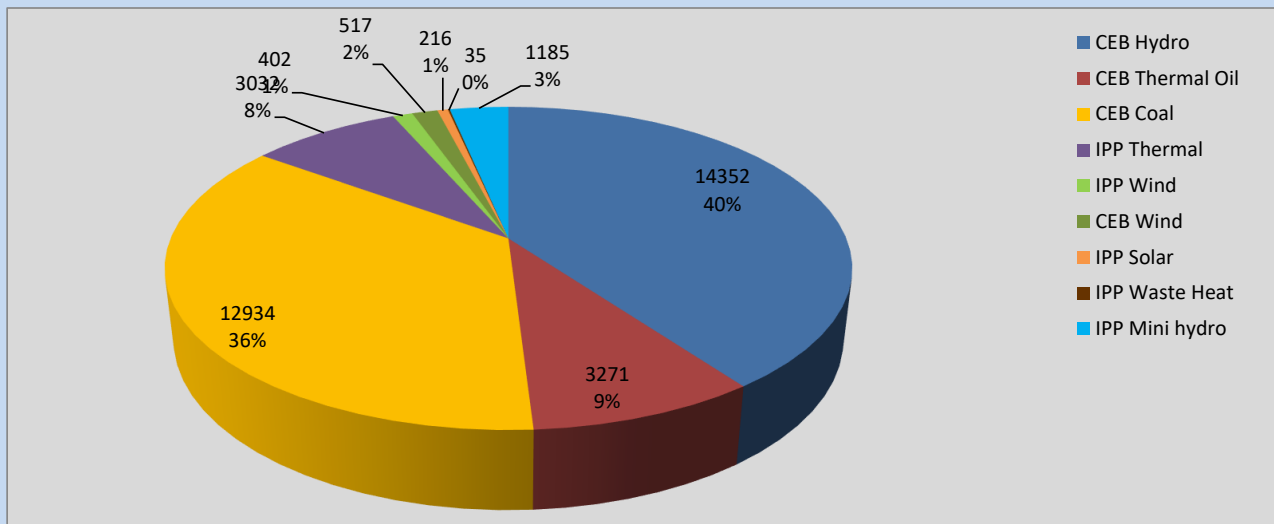
Generation and Reservoirs Statistics

July 30, 2022



PUBLIC UTILITIES COMMISSION OF SRI LANKA

Daily Generation Mix in MWh



Total Generation **35,944 MWh**

Note: Above data is excluding contribution from Roof Top Solar, 1MW Solar and certain Mini Hydro plants

Cumulative Dispatch

Note: Following data is Excluding contribution from Roof Top Solar, 1MW solar and Mini Hydro plants

For Current Month

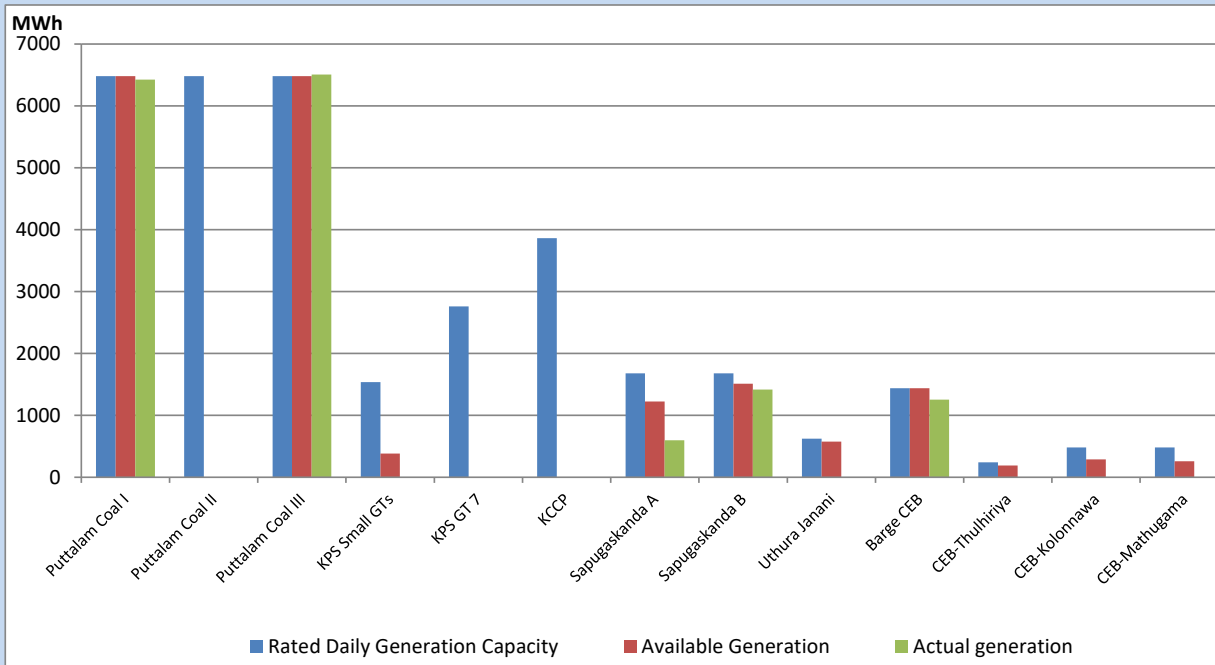
Category	Dispatch (GWh)	Percentage
CEB Hydro	433.45	37.72%
CEB Thermal Oil	111.99	9.75%
CEB Coal	379.24	33.00%
IPP Thermal	100.73	8.77%
SPP Wind	32.87	2.86%
CEB Wind	34.03	2.96%
SPP Solar	7.32	0.64%
SPP Solid Waste	5.57	0.48%
Mini Hydro	43.93	3.82%
Total	1,149.13	

For Current Year

Category	Dispatch (GWh)	Percentage
CEB Hydro	2,484.8	28.70%
CEB Thermal Oil	1,052.1	12.15%
CEB Coal	3,407.5	39.36%
IPP Thermal	972.3	11.23%
SPP Wind	182.8	2.11%
CEB Wind	199.9	2.31%
SPP Solar	53.8	0.62%
SPP Solid Waste	44.1	0.51%
Mini Hydro	259.5	3.00%
Total	8,656.5	

CEB owned Thermal Plant Dispatch

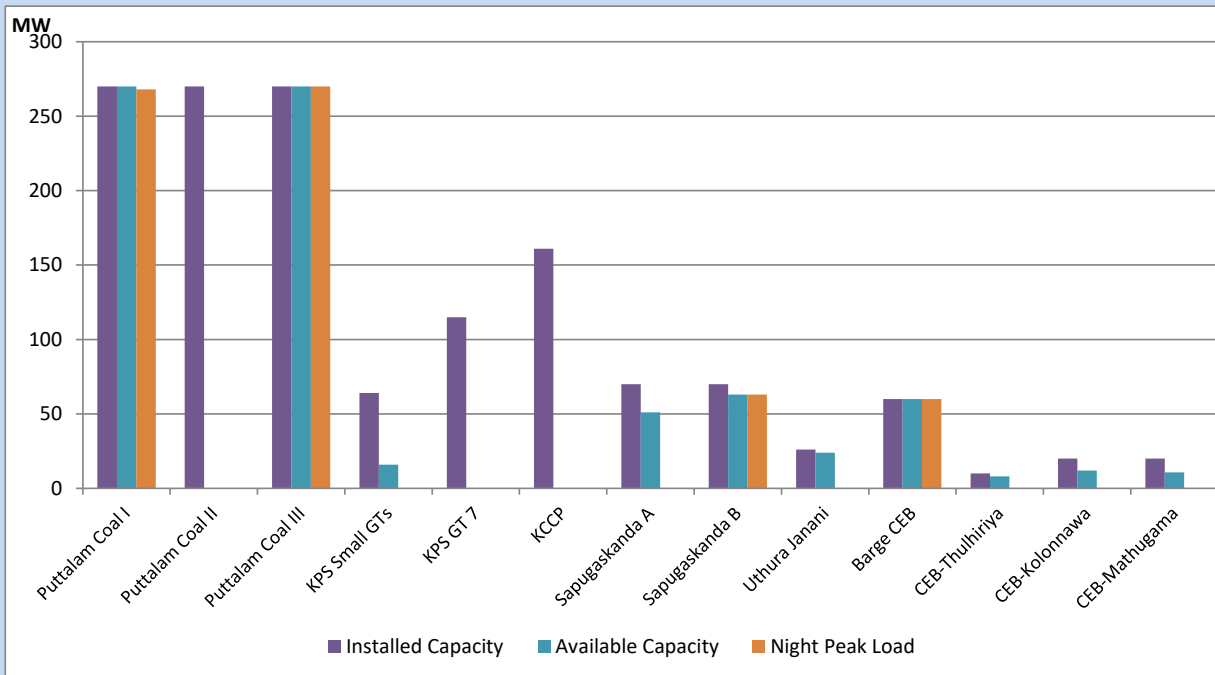
July 30, 2022



Available Generation is estimated based on plant availability at 6.00am on

July 31, 2022

CEB owned Thermal Plant Loading at the Night Peak



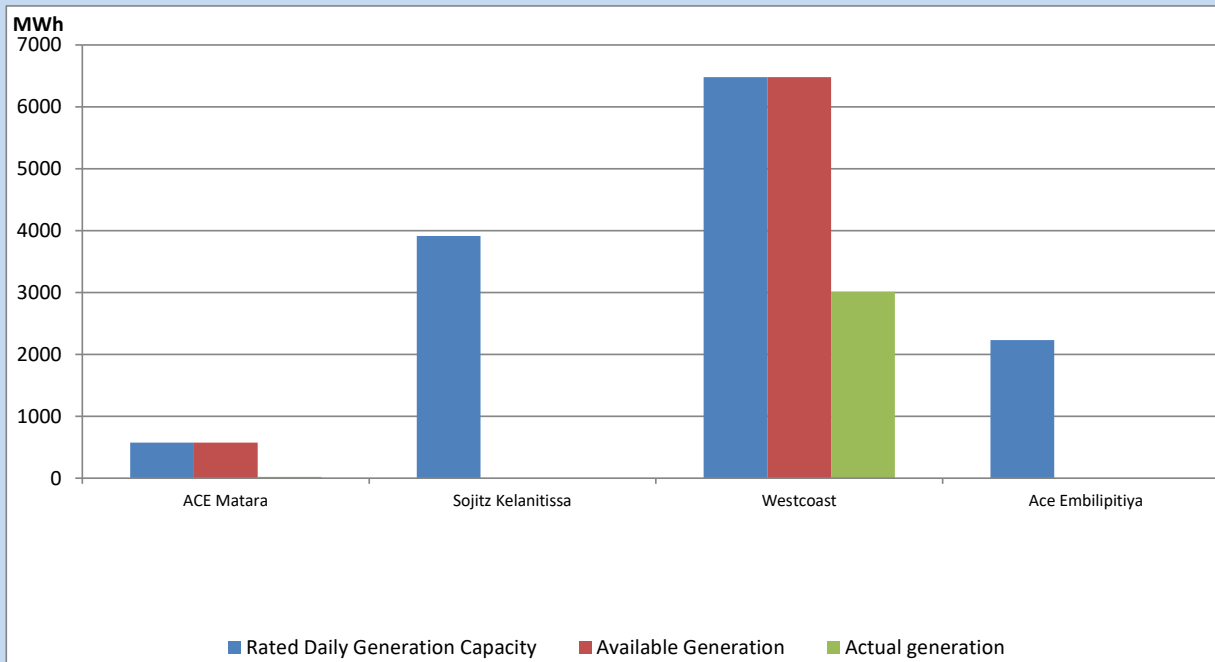
Note- Plant availability is recorded at 6.00 am on

July 31, 2022

IPP owned Thermal Plant Dispatch

July 30, 2022

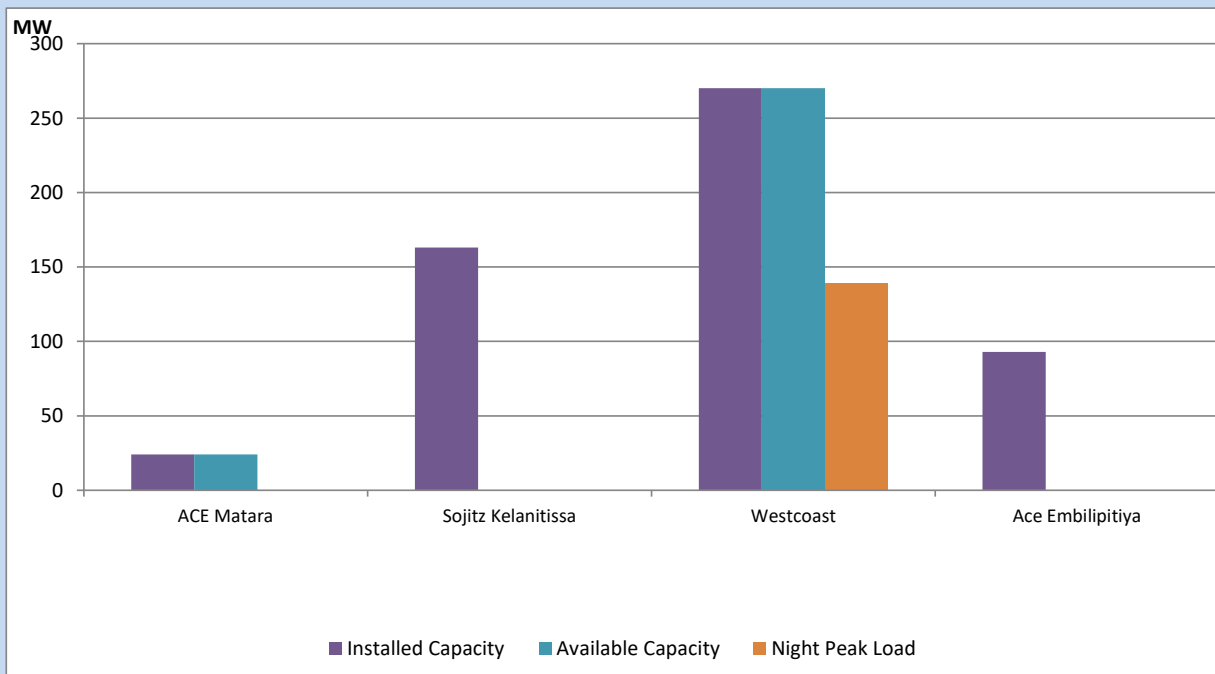
Asia Power, V Power Pallekale, Vpower Galle, V Power Horana, Vpower Hambantota, Vpower Valachchena and Altaqa Mahiyanganaya are not available due to expiration of PPAs



Available Generation is estimated based on plant availability at 6.00am on

July 31, 2022

IPP owned Thermal Plant Loading at the Night Peak

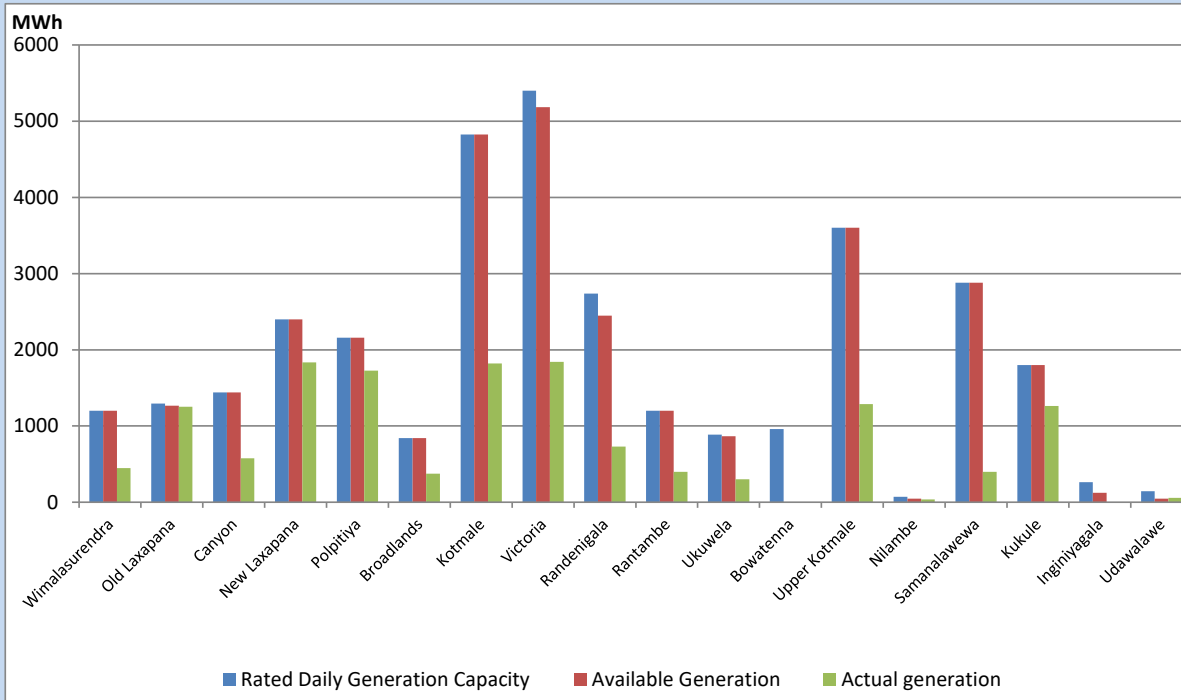


Note- Plant availability is recorded at 6.00 am on

July 31, 2022

Major Hydro Plant Dispatch

July 30, 2022

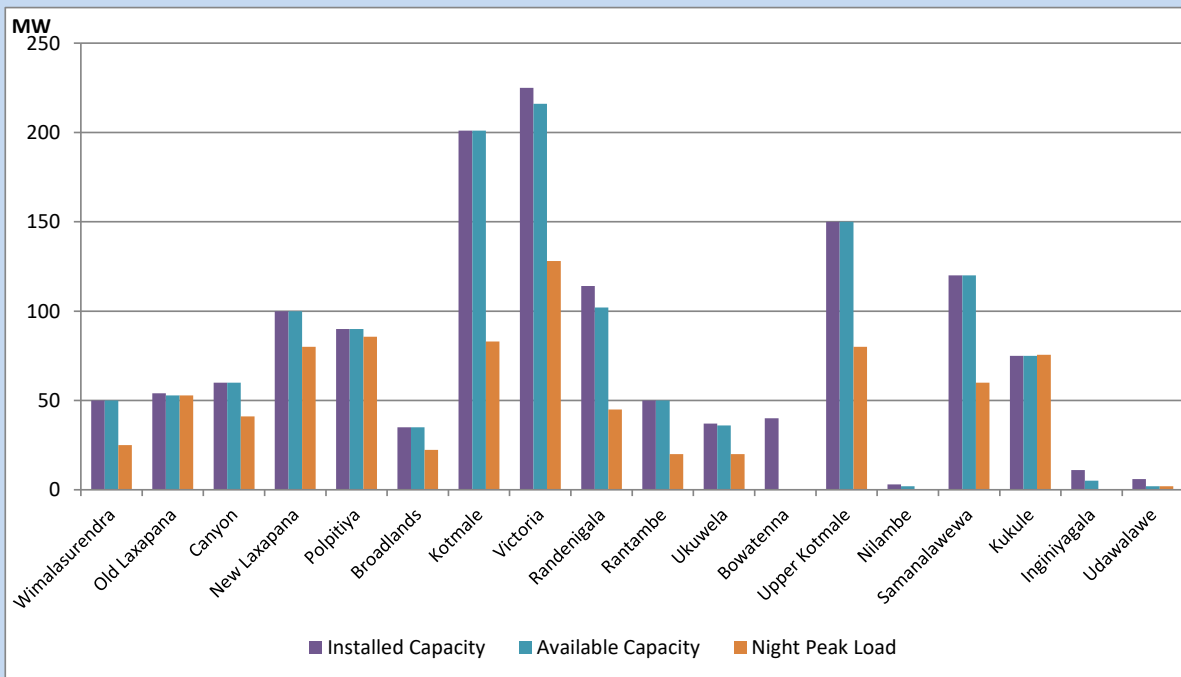


Available Generation is estimated based on plant availability at 6.00am on
Broadlands power plant is operating in the Commissioning Stage

July 31, 2022

Major Hydro Plant Loading at Night Peak

July 30, 2022



Note- Plant availability is recorded at 6.00 am on
Broadlands power plant is operating in the Commissioning Stage

July 31, 2022

Summary of Major Plant performance

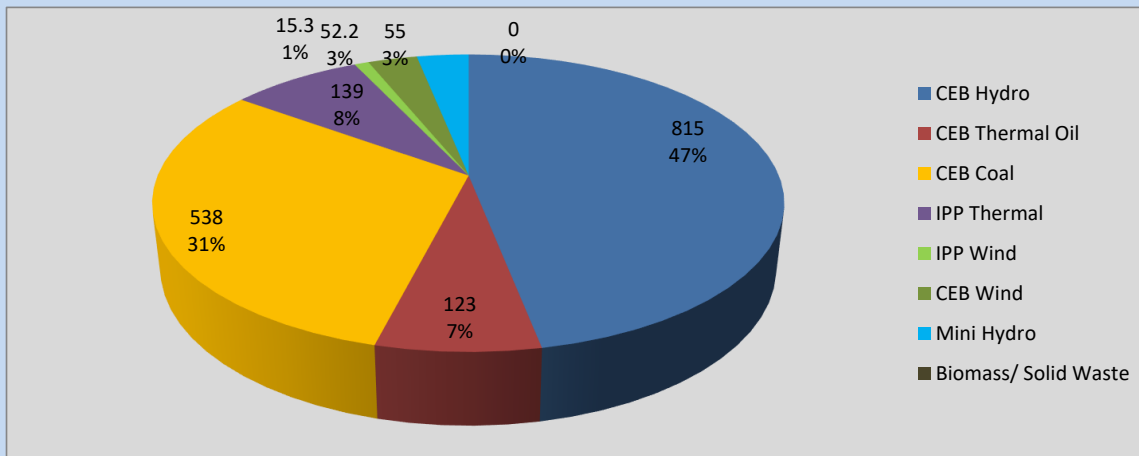
Plant	Installed Capacity	Plant Availability	Night peak Load	Plant Dispatch
	(MW)	(MW)	(MW)	(MWh)
Wimalasurendra	50	50	25	448
Old Laxapana	54	53	53	1,251
Canyon	60	60	41	578
New Laxapana	100	100	80	1,833
Polpitiya	90	90	86	1,728
Broadlands	35	35	22	376
Kotmale	201	201	83	1,820
Victoria	225	216	128	1,843
Randenigala	114	102	45	731
Rantambe	50	50	20	400
Ukuwela	37	36	20	301
Bowatenna	40	0	0	0
Upper Kotmale	150	150	80	1,289
Nilambe	3	2	0	36
Samanalawewa	120	120	60	398
Kukule	75	75	76	1,263
Inginiyagala	11	5	0	0
Udawalawe	6	2	2	57
Puttalam Coal I	270	270	268	6,427
Puttalam Coal II	270	0	0	0
Puttalam Coal III	270	270	270	6,507
KPS Small GTs	64	16	0	0
KPS GT 7	115	0	0	0
KCCP	161	0	0	0
Sapugaskanda A	70	51	0	599
Sapugaskanda B	70	63	63	1,419
Uthura Janani	26	24	0	0
Barge CEB	60	60	60	1,253
CEB-Thulhiriya	10	8	0	0
CEB-Kolonnawa	20	12	0	0
CEB-Mathugama	20	11	0	0
ACE Matara	24	24	0	21
Sojitz Kelanitissa	163	0	0	0
West Coast	270	270	139	3,011
ACE Embilipitiya	93	0	0	0
Total	3,397	2,426	1,743	35,944

Plant availability is the availability recorded at 6 am on

July 31, 2022

Contribution to the Night Peak in MW

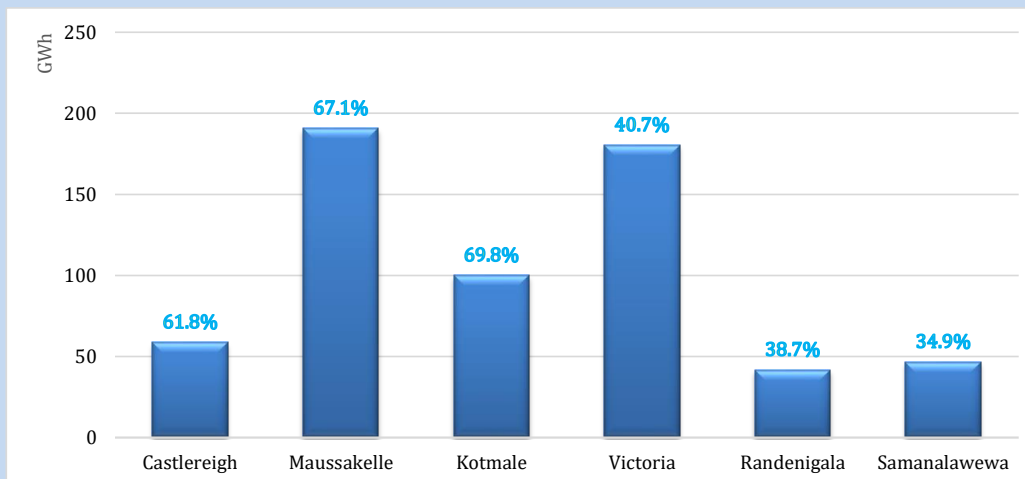
July 30, 2022



Night Peak*	1,737.7 MW
Day Peak	1,729.3 MW
Minimum Demand	1,241.7 MW

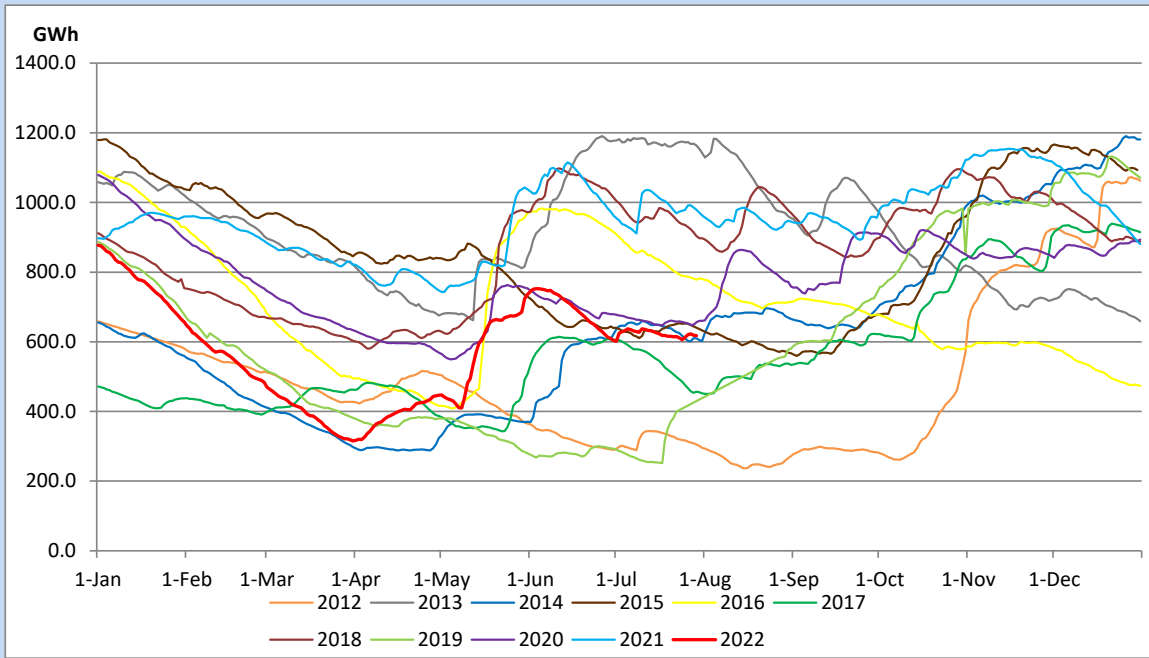
Above figures are excluding contribution from Roof Top Solar, 1MW solar, certain Wind plants and Mini Hydro plants

Reservoir Levels - as at 06.00 Hr on July 31, 2022

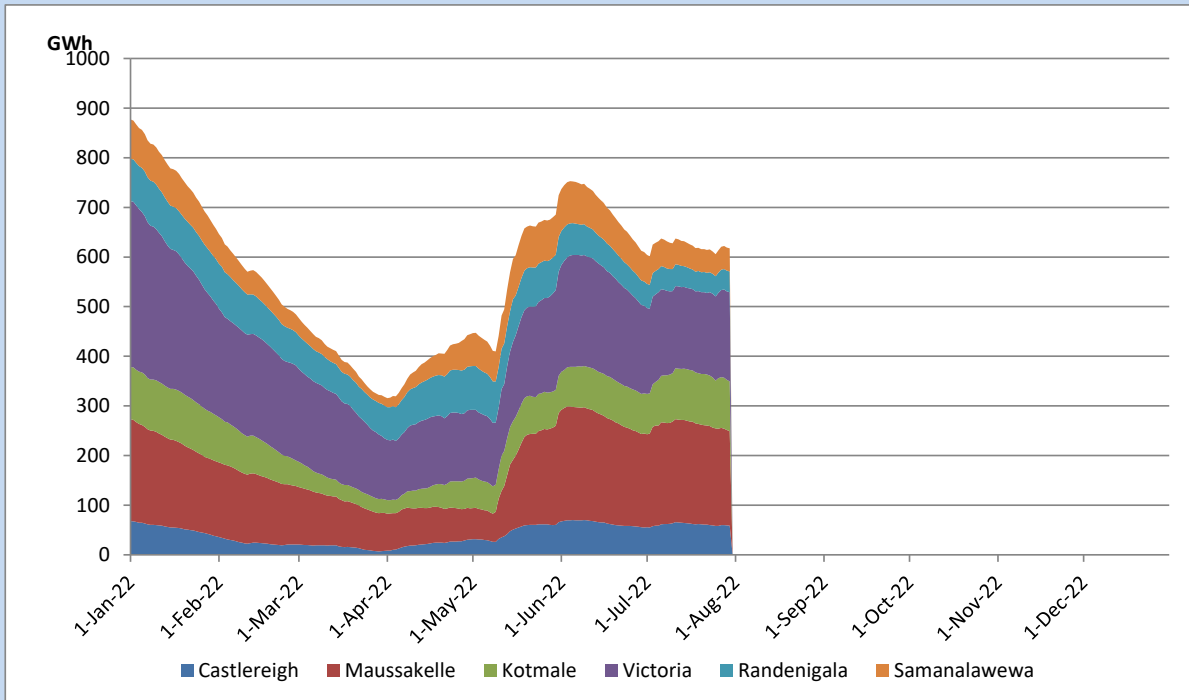


Total Reservoir Level	617.4 GWh
% of Total capacity	51.2%

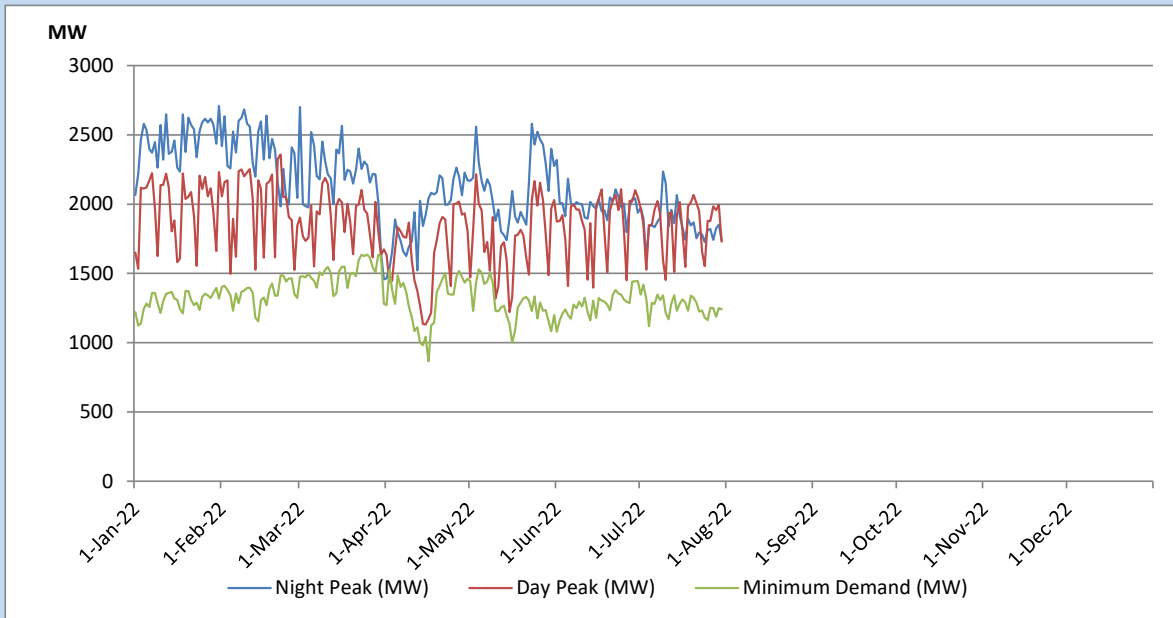
Comparison of Total Reservoir Storage Levels with Past Years



Variation of Major Hydro Reservoir Levels in the current year (GWh)



Variation of Demand during the current year

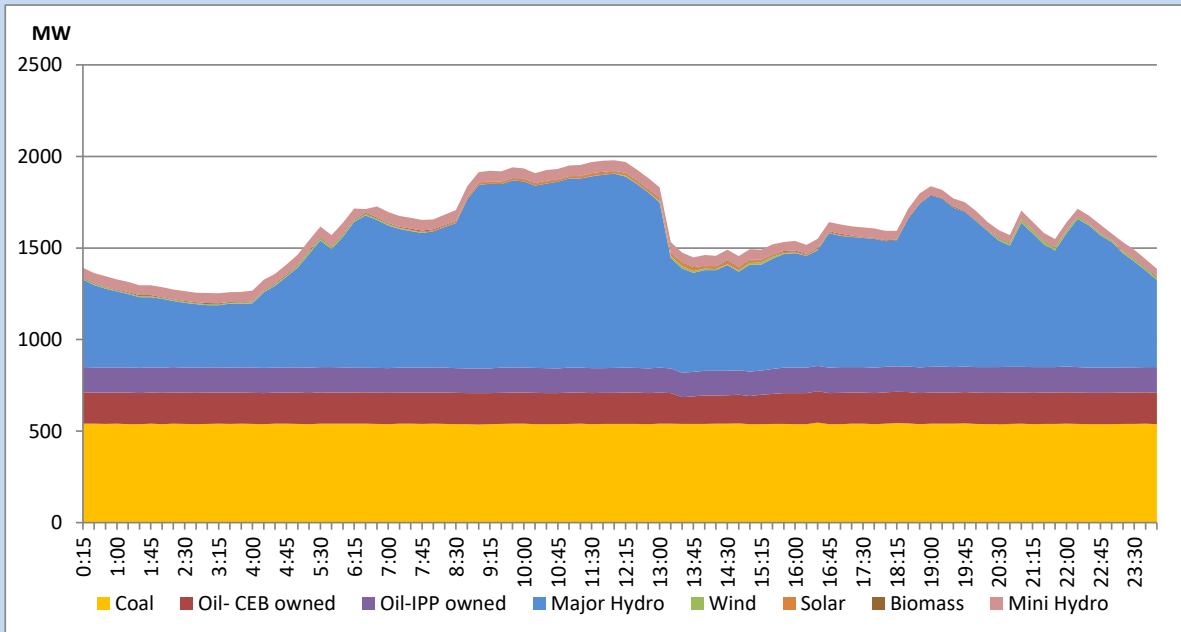


The above figures are excluding contribution from Roof Top Solar, 1MW solar, certain Wind plants and Mini Hydro plants

Daily Load Curve of the Previous day

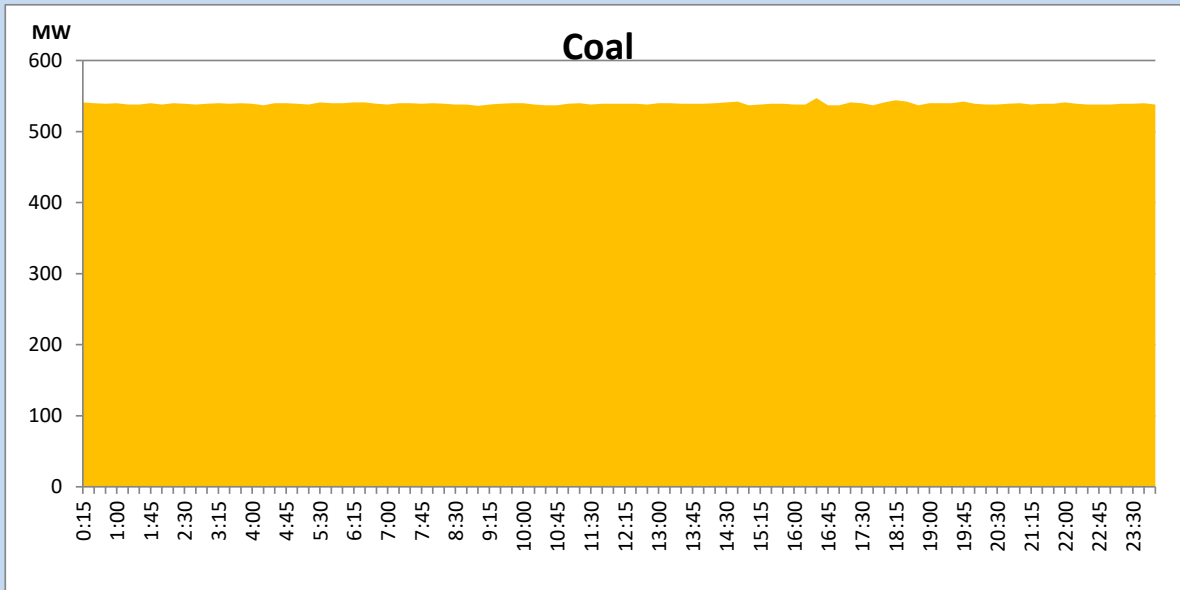
July 29, 2022

Solar and wind data is based on Telemetered Power Stations only



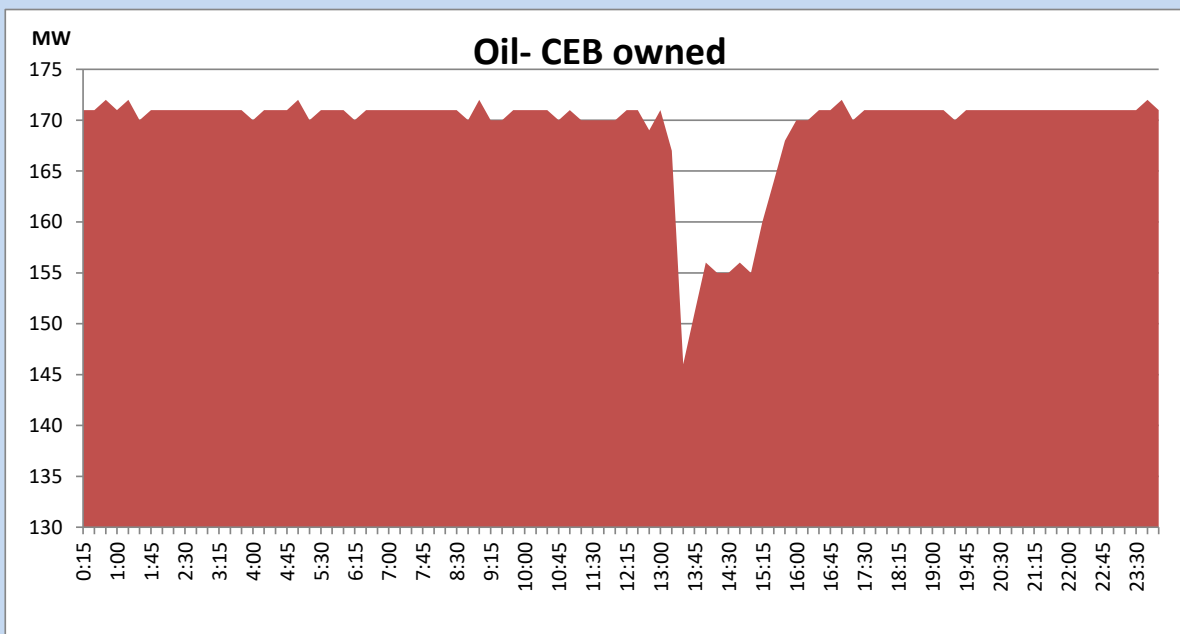
Coal Generation during the Previous day

July 29, 2022



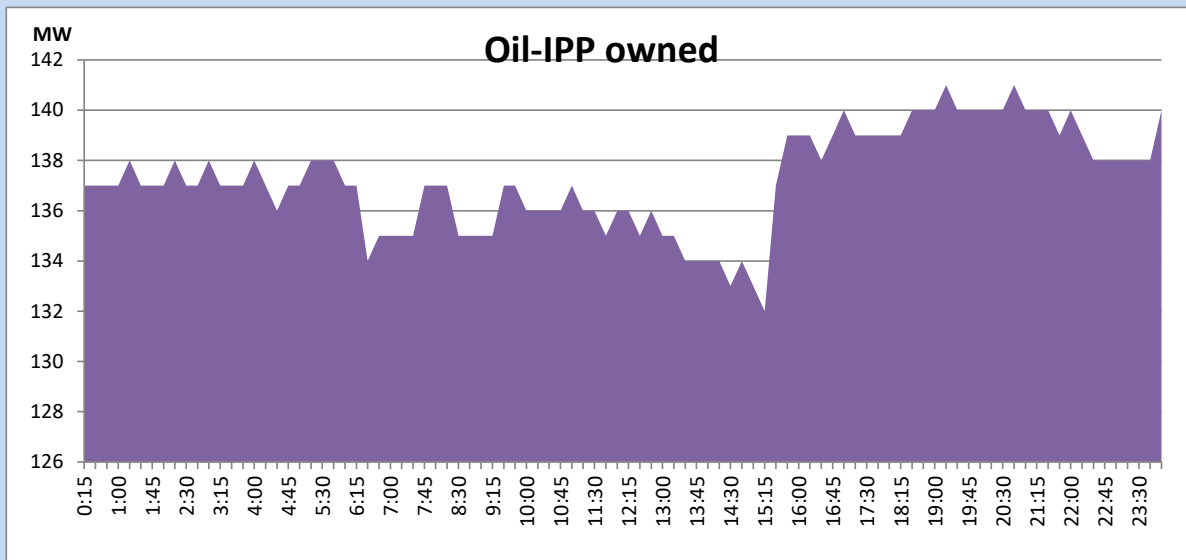
CEB Oil Plant Generation during the Previous day

July 29, 2022



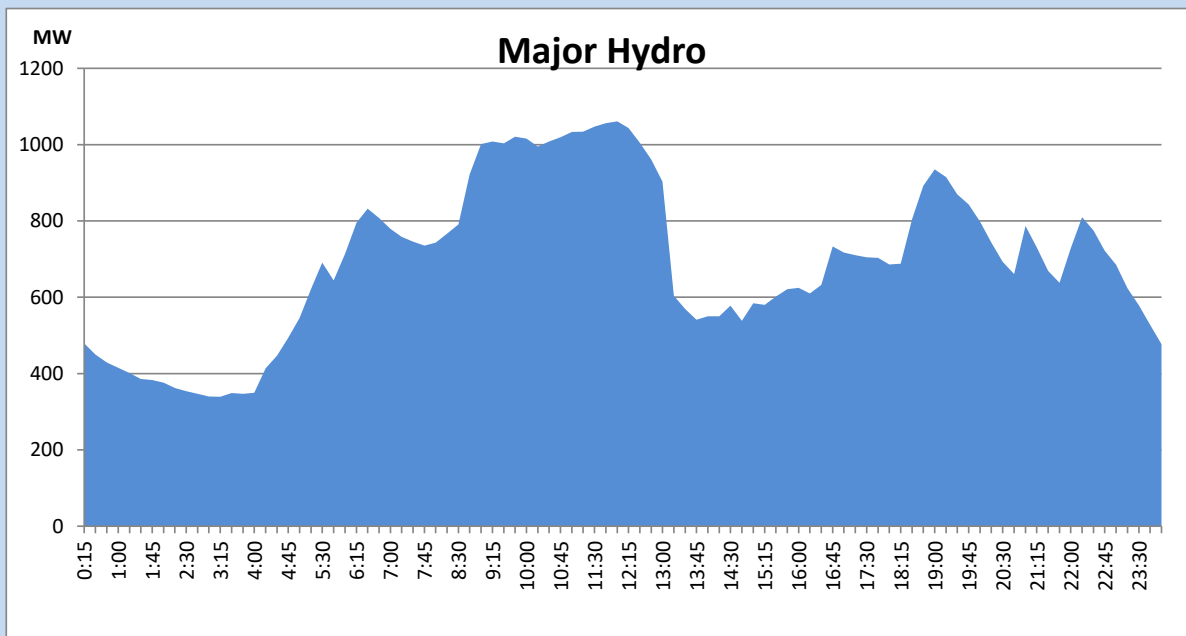
IPP Oil Plant Generation during the Previous day

July 29, 2022



Major Hydro Generation during the Previous day

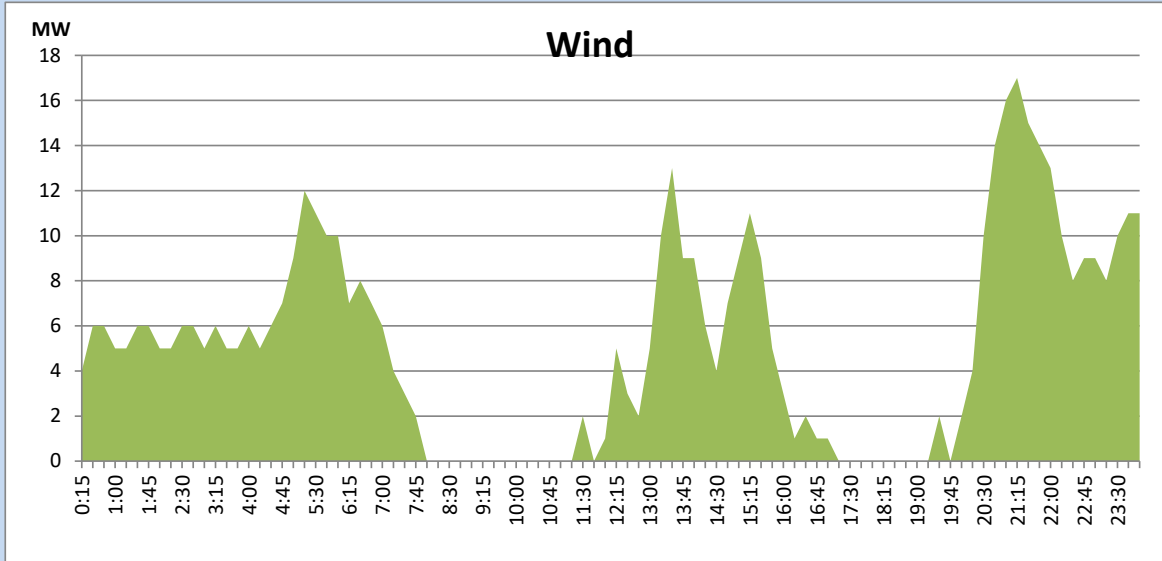
July 29, 2022



Wind Generation during the Previous day

July 29, 2022

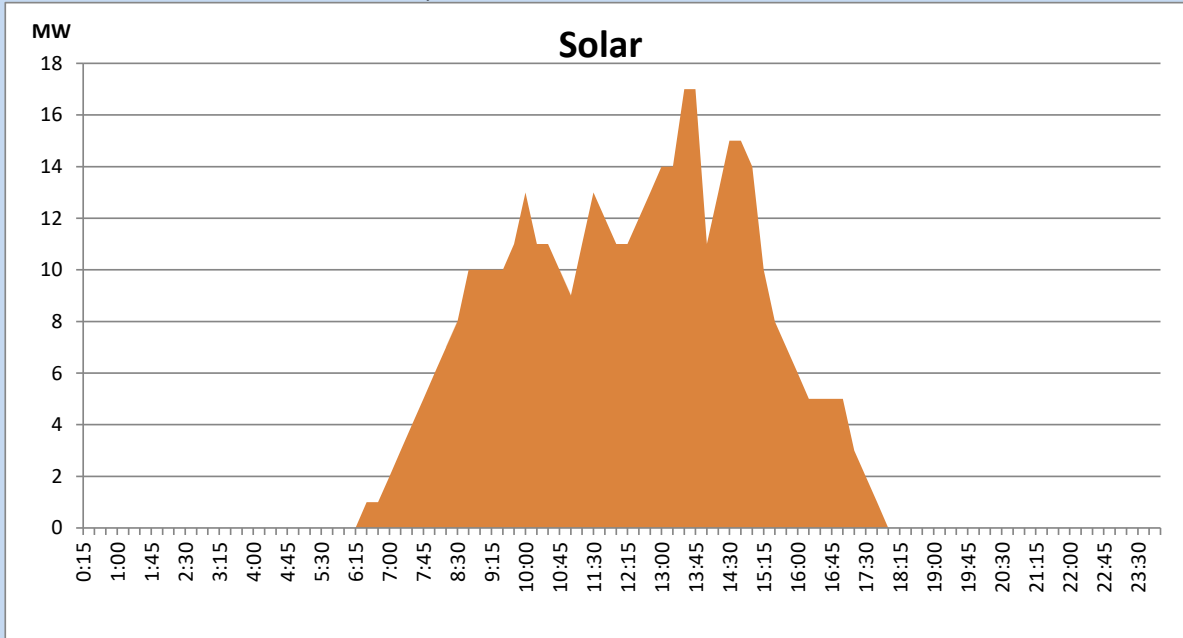
Based on Telemetered Power Stations only



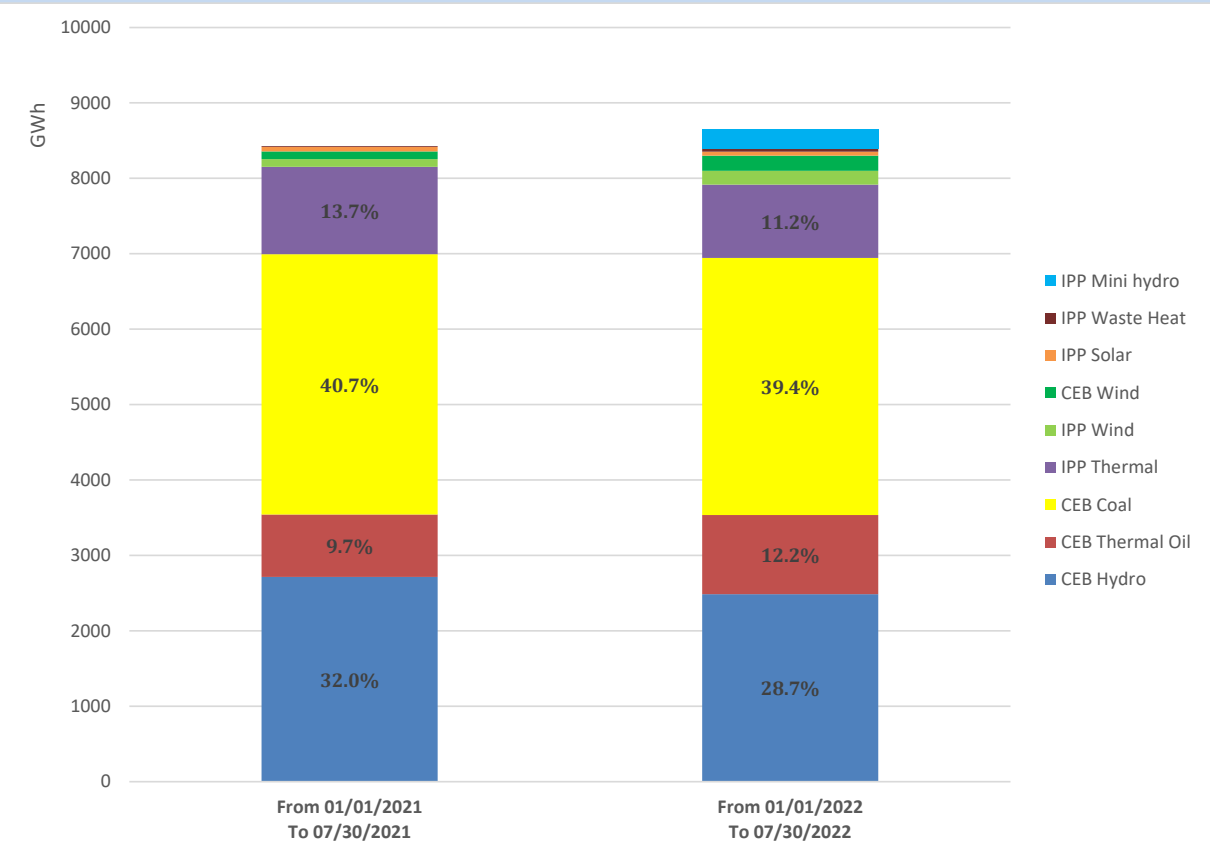
Solar Generation during the Previous day

July 29, 2022

Based on Telemetered Power Stations only



Cumulative Dispatch Comparison with Last Year



Thermal Plant Fuel types

Power Station	Primary Fuel
CEB Thermal	
Sapugaskanda 1	Heavy Fuel
Sapugaskanda 2	Heavy Fuel
Kelanitissa Small Gas Turbines	Auto Diesel
GT 7 - Kelanitissa	Auto Diesel
Kelanitissa CCY	Naphtha or Diesel
Lakvijaya 1	Coal
Lakvijaya 2	Coal
Lakvijaya 3	Coal
Uthuru Janani	Heavy Fuel
Barge CEB	Heavy Fuel

Power Station	Primary Fuel
Private Thermal	
Sojitz - Kelanitissa	Auto Diesel
West Coast	Auto Diesel / Heavy Fuel
ACE Matara	Heavy Fuel
ACE Embilipitiya	Heavy Fuel

Major Incidents during the day -as reported by CEB morning of

July 31, 2022

1) Rotational manual load shedding was carried out from 10:20 hrs to 12:00 hrs and 14:40 hrs to 22:00 hrs.