

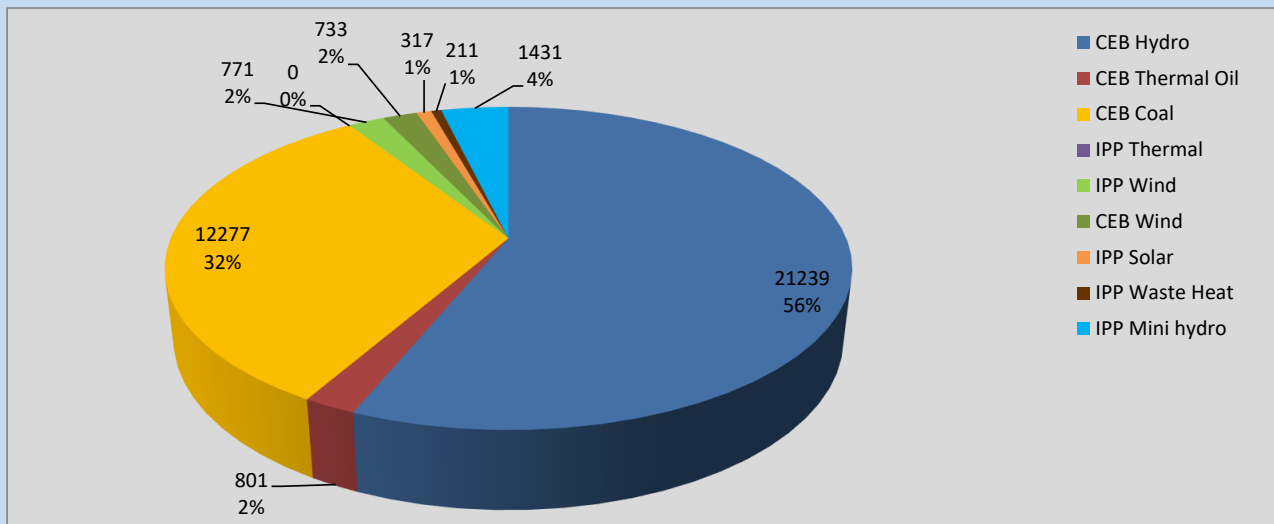
# Generation and Reservoirs Statistics

August 29, 2022



PUBLIC UTILITIES COMMISSION OF SRI LANKA

## Daily Generation Mix in MWh



**Total Generation** **37,780 MWh**

Note: Above data is excluding contribution from Roof Top Solar, 1MW Solar and certain Mini Hydro plants

## Cumulative Dispatch

Note: Following data is Excluding contribution from Roof Top Solar, 1MW solar and Mini Hydro plants

### For Current Month

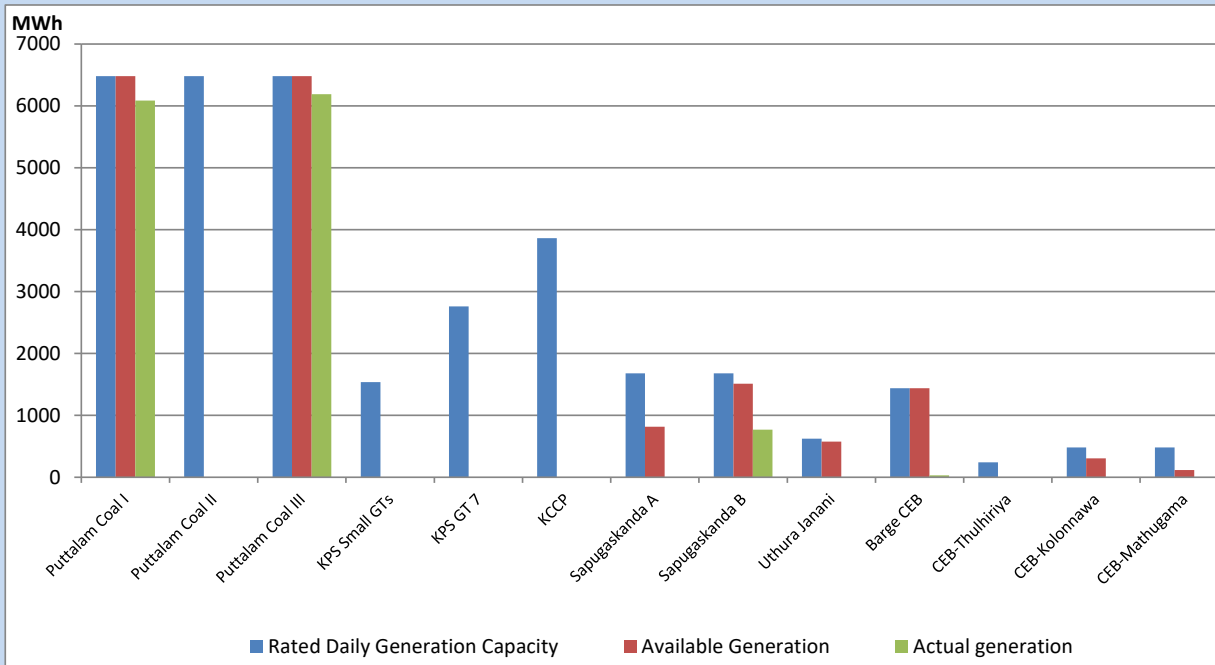
Category	Dispatch (GWh)	Percentage
CEB Hydro	573.24	53.15%
CEB Thermal Oil	51.41	4.77%
CEB Coal	255.43	23.68%
IPP Thermal	53.32	4.94%
SPP Wind	45.30	4.20%
CEB Wind	43.27	4.01%
SPP Solar	7.71	0.71%
SPP Solid Waste	4.38	0.41%
Mini Hydro	44.52	4.13%
<b>Total</b>	<b>1,078.58</b>	

### For Current Year

Category	Dispatch (GWh)	Percentage
CEB Hydro	3,071.4	31.44%
CEB Thermal Oil	1,106.8	11.33%
CEB Coal	3,675.1	37.62%
IPP Thermal	1,025.8	10.50%
SPP Wind	229.3	2.35%
CEB Wind	244.5	2.50%
SPP Solar	61.7	0.63%
SPP Solid Waste	48.4	0.50%
Mini Hydro	305.5	3.13%
<b>Total</b>	<b>9,768.2</b>	

## CEB owned Thermal Plant Dispatch

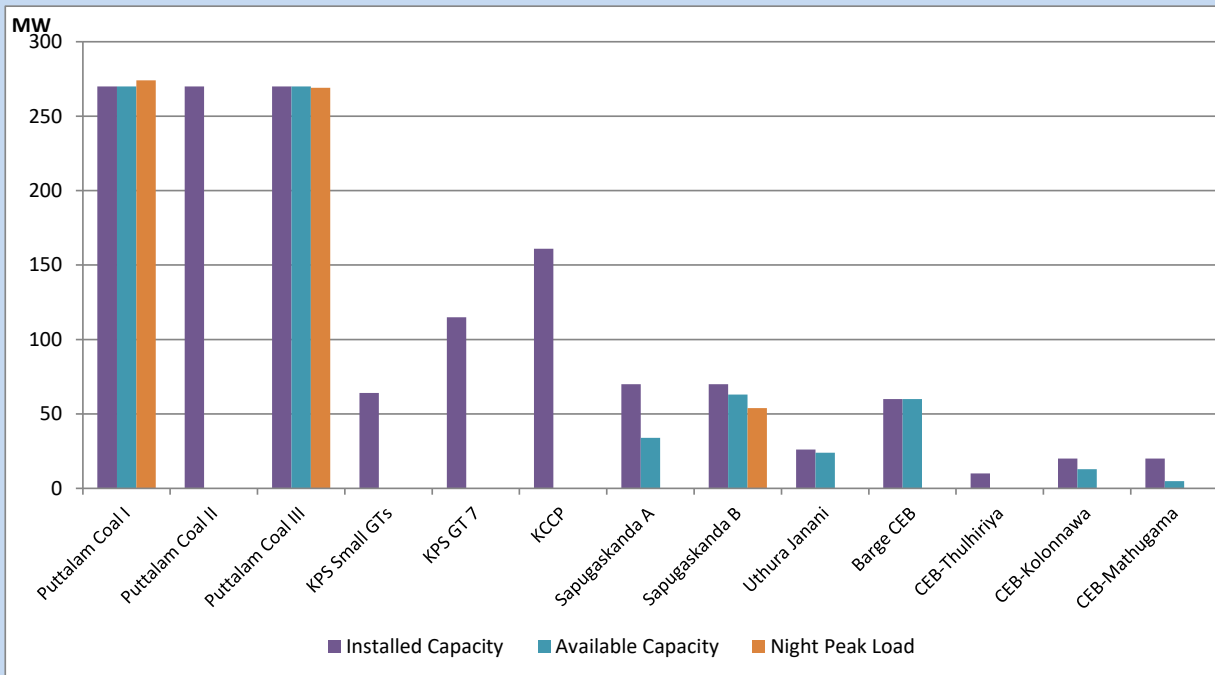
August 29, 2022



Available Generation is estimated based on plant availability at 6.00am on

August 30, 2022

## CEB owned Thermal Plant Loading at the Night Peak



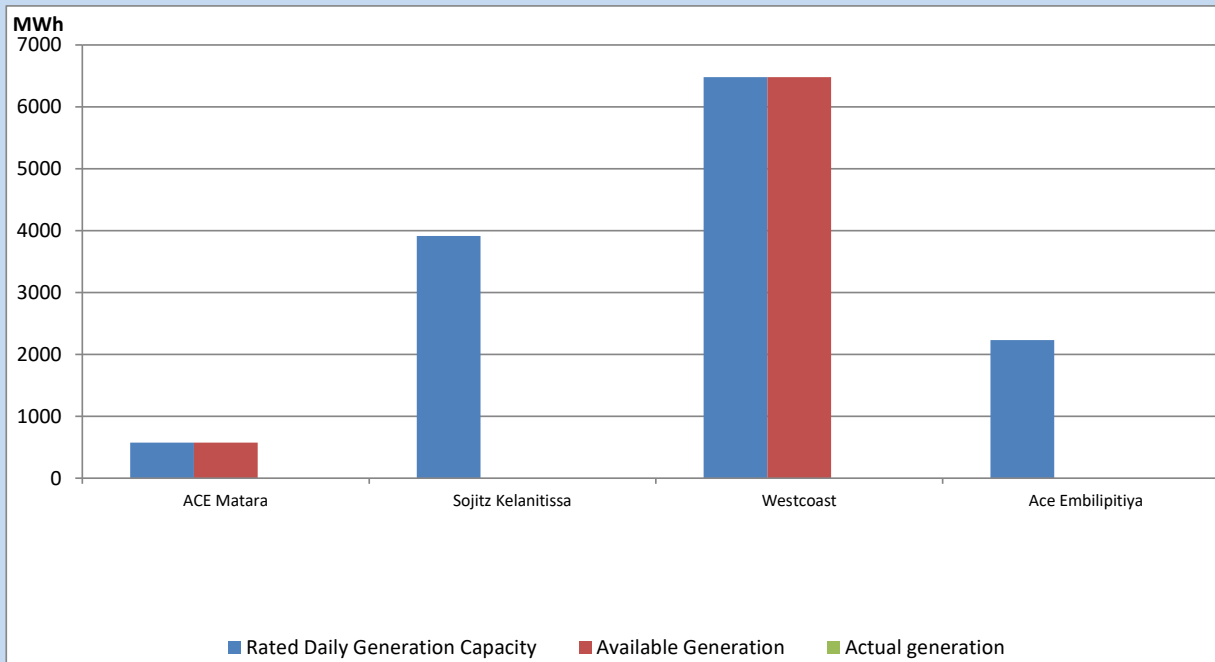
Note- Plant availability is recorded at 6.00 am on

August 30, 2022

## IPP owned Thermal Plant Dispatch

August 29, 2022

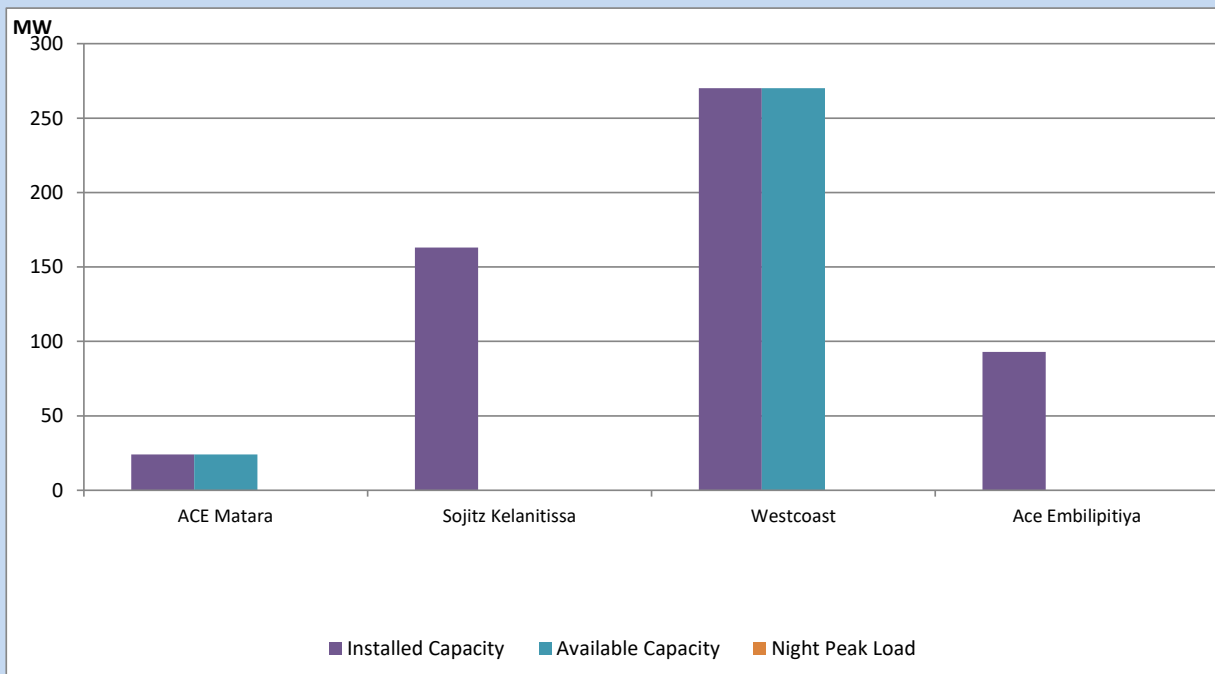
Asia Power, V Power Pallekale, Vpower Galle, V Power Horana, Vpower Hambantota, Vpower Valachchena and Altaqa Mahiyanganaya are not available due to expiration of PPAs



Available Generation is estimated based on plant availability at 6.00am on

August 30, 2022

## IPP owned Thermal Plant Loading at the Night Peak

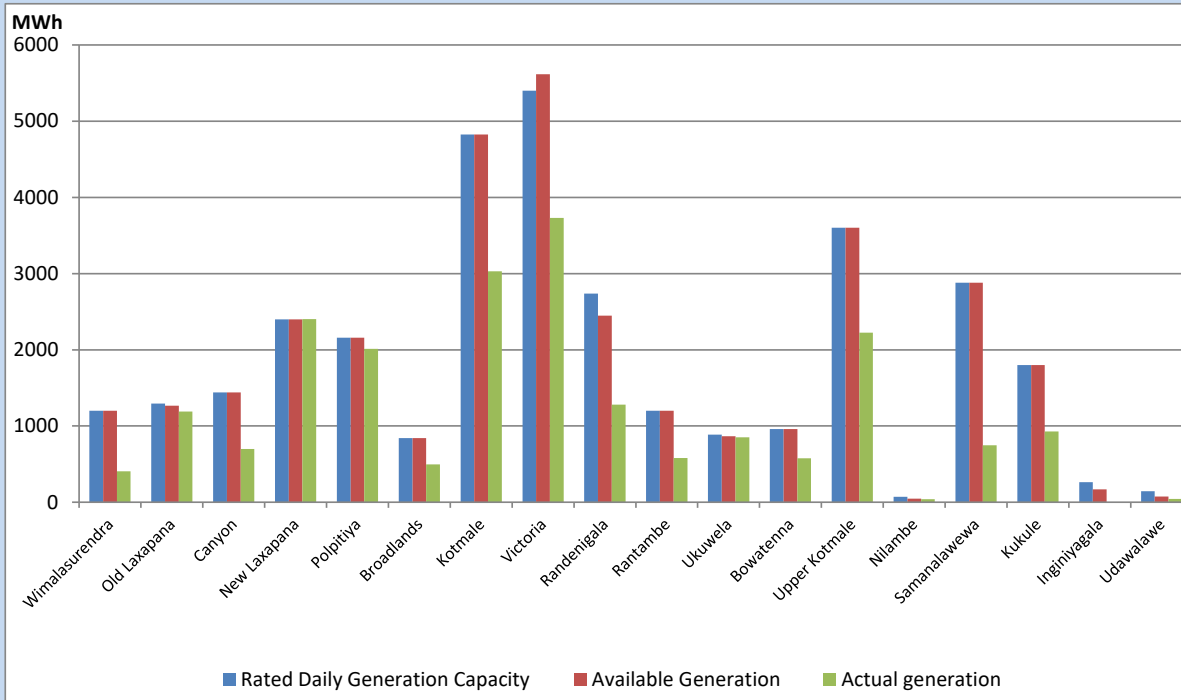


Note- Plant availability is recorded at 6.00 am on

August 30, 2022

## Major Hydro Plant Dispatch

August 29, 2022

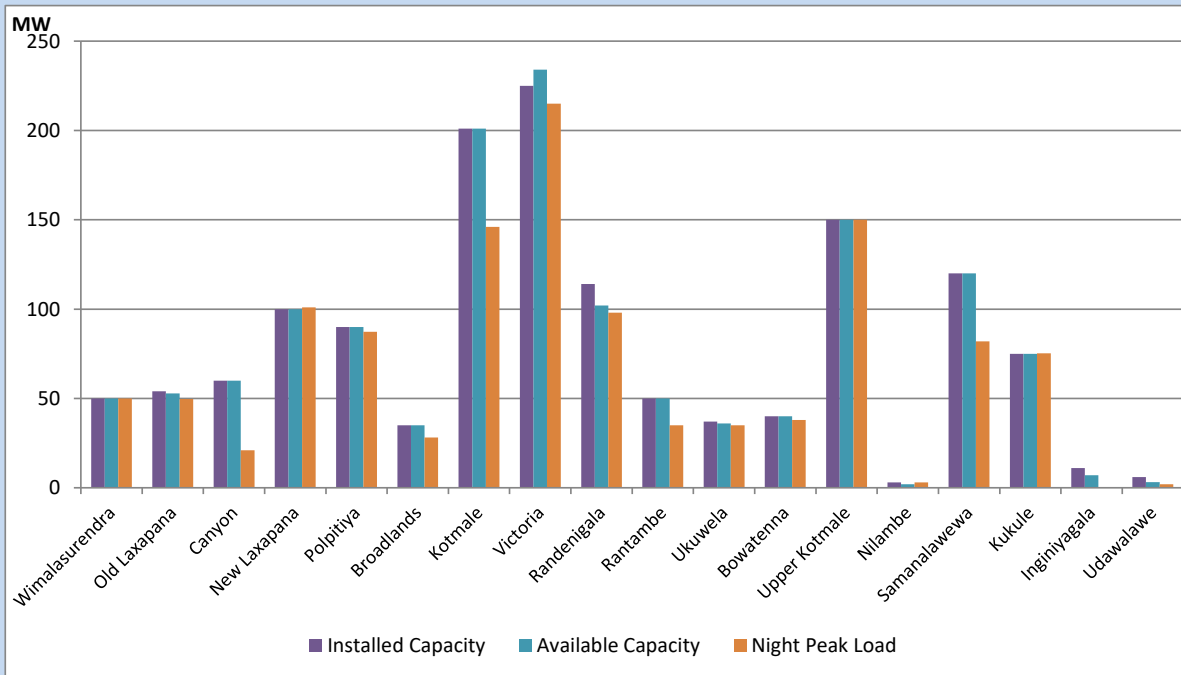


Available Generation is estimated based on plant availability at 6.00am on August 30, 2022  
 Broadlands power plant is operating in the Commissioning Stage

August 30, 2022

## Major Hydro Plant Loading at Night Peak

August 29, 2022



Note- Plant availability is recorded at 6.00 am on August 30, 2022  
 Broadlands power plant is operating in the Commissioning Stage

## Summary of Major Plant performance

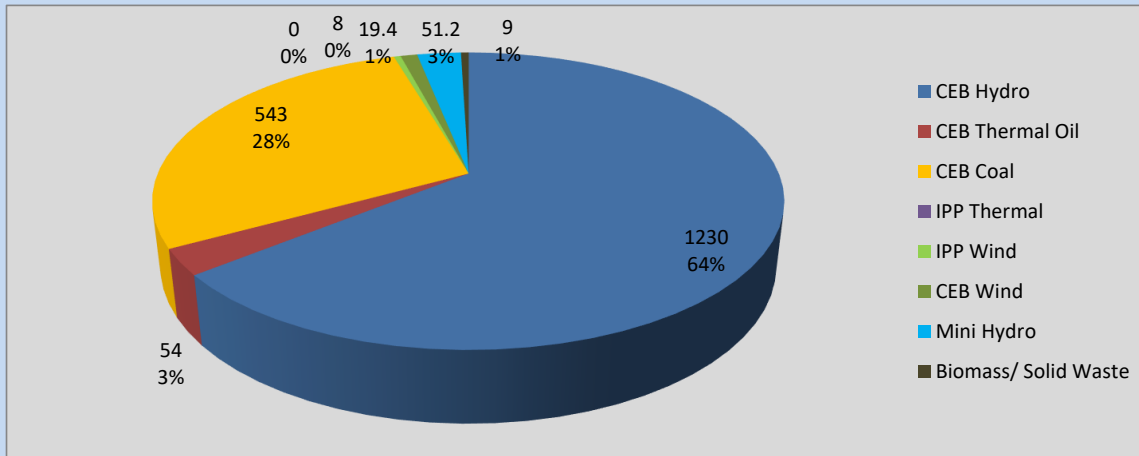
Plant	Installed Capacity	Plant Availability	Night peak Load	Plant Dispatch
	(MW)	(MW)	(MW)	(MWh)
Wimalasurendra	50	50	50	406
Old Laxapana	54	53	50	1,191
Canyon	60	60	21	699
New Laxapana	100	100	101	2,404
Polpitiya	90	90	87	2,014
Broadlands	35	35	28	496
Kotmale	201	201	146	3,030
Victoria	225	234	215	3,729
Randenigala	114	102	98	1,280
Rantambe	50	50	35	580
Ukuwela	37	36	35	853
Bowatenna	40	40	38	575
Upper Kotmale	150	150	150	2,224
Nilambe	3	2	3	38
Samanalawewa	120	120	82	748
Kukule	75	75	75	928
Inginiyagala	11	7	0	0
Udawalawe	6	3	2	44
Puttalam Coal I	270	270	274	6,086
Puttalam Coal II	270	0	0	0
Puttalam Coal III	270	270	269	6,191
KPS Small GTs	64	0	0	0
KPS GT 7	115	0	0	0
KCCP	161	0	0	0
Sapugaskanda A	70	34	0	0
Sapugaskanda B	70	63	54	771
Uthura Janani	26	24	0	0
Barge CEB	60	60	0	30
CEB-Thulhiriya	10	0	0	0
CEB-Kolonnawa	20	13	0	0
CEB-Mathugama	20	5	0	0
ACE Matara	24	24	0	0
Sojitz Kelanitissa	163	0	0	0
West Coast	270	270	0	0
ACE Embilipitiya	93	0	0	0
<b>Total</b>	<b>3,397</b>	<b>2,441</b>	<b>1,901</b>	<b>37,780</b>

Plant availability is the availability recorded at 6 am on

August 30, 2022

## Contribution to the Night Peak in MW

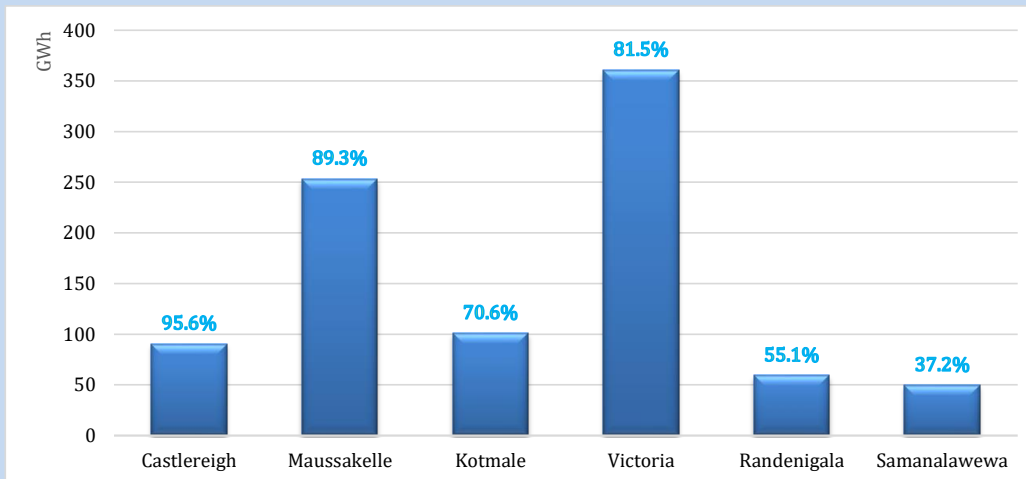
August 29, 2022



Night Peak*	1,914.1 MW
Day Peak	1,917.9 MW
Minimum Demand	1,125.1 MW

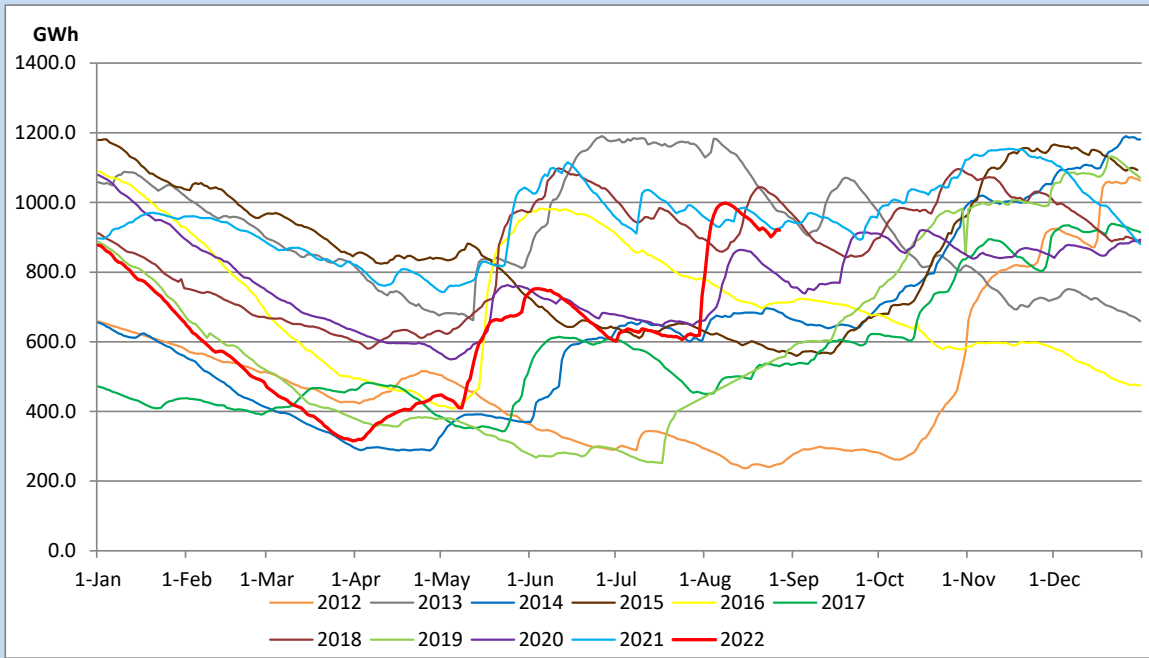
Above figures are excluding contribution from Roof Top Solar, 1MW solar, certain Wind plants and Mini Hydro plants

## Reservoir Levels - as at 06.00 Hr on August 30, 2022

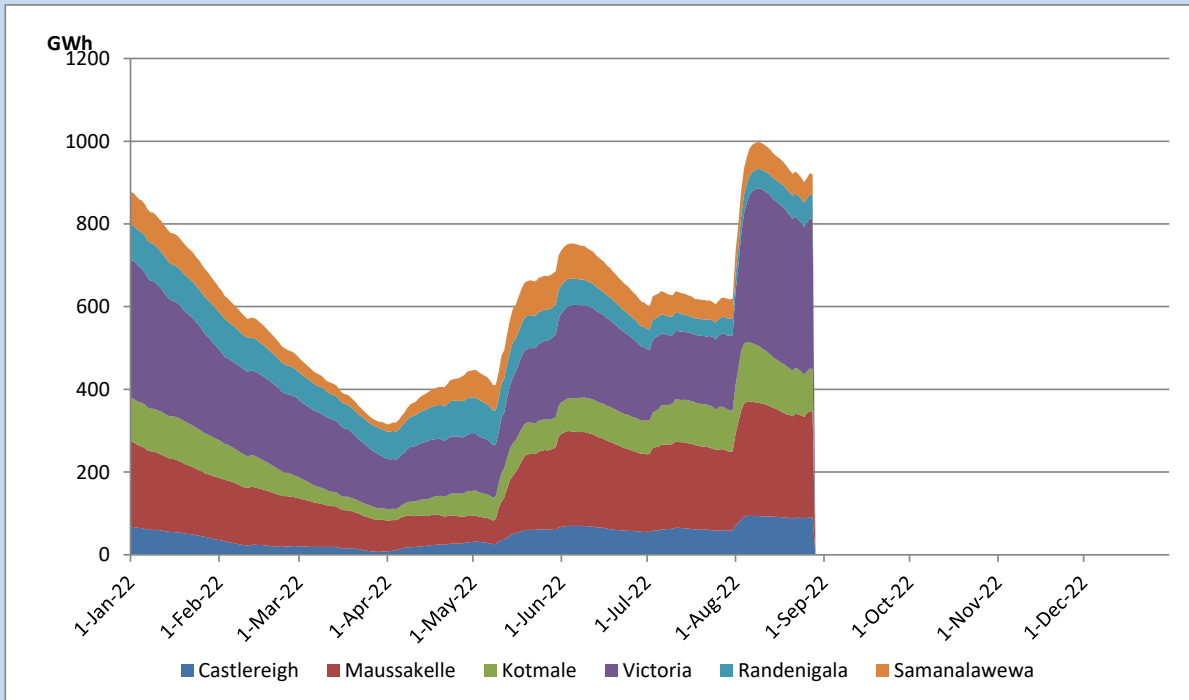


Total Reservoir Level	914.8 GWh
% of Total capacity	75.9%

## Comparison of Total Reservoir Storage Levels with Past Years

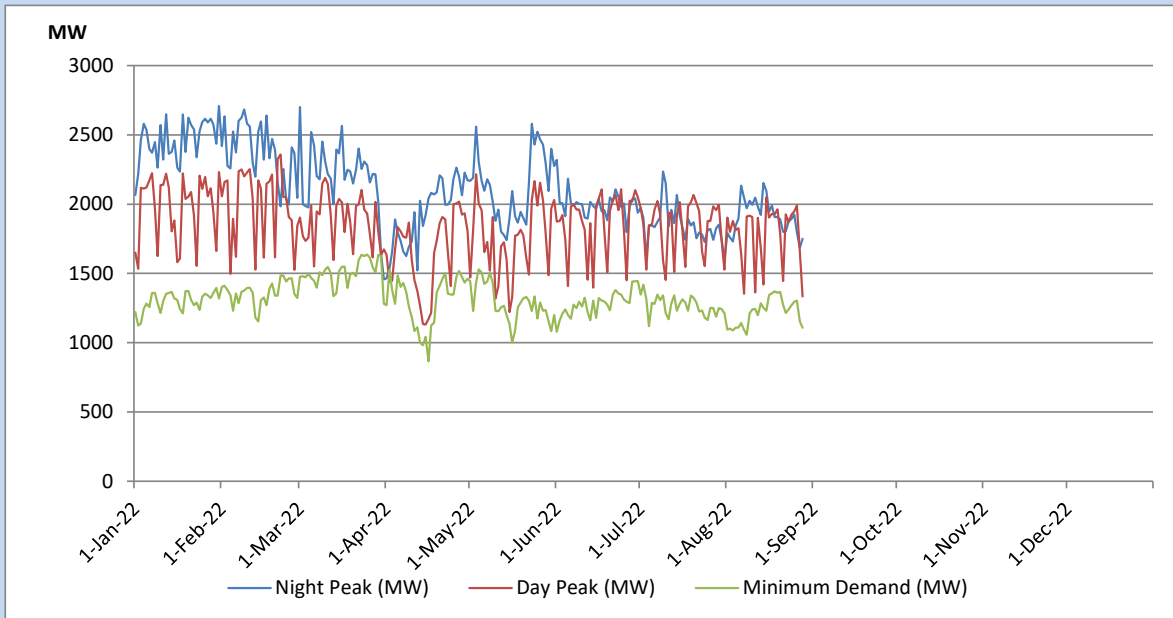


## Variation of Major Hydro Reservoir Levels in the current year (GWh)





## Variation of Demand during the current year

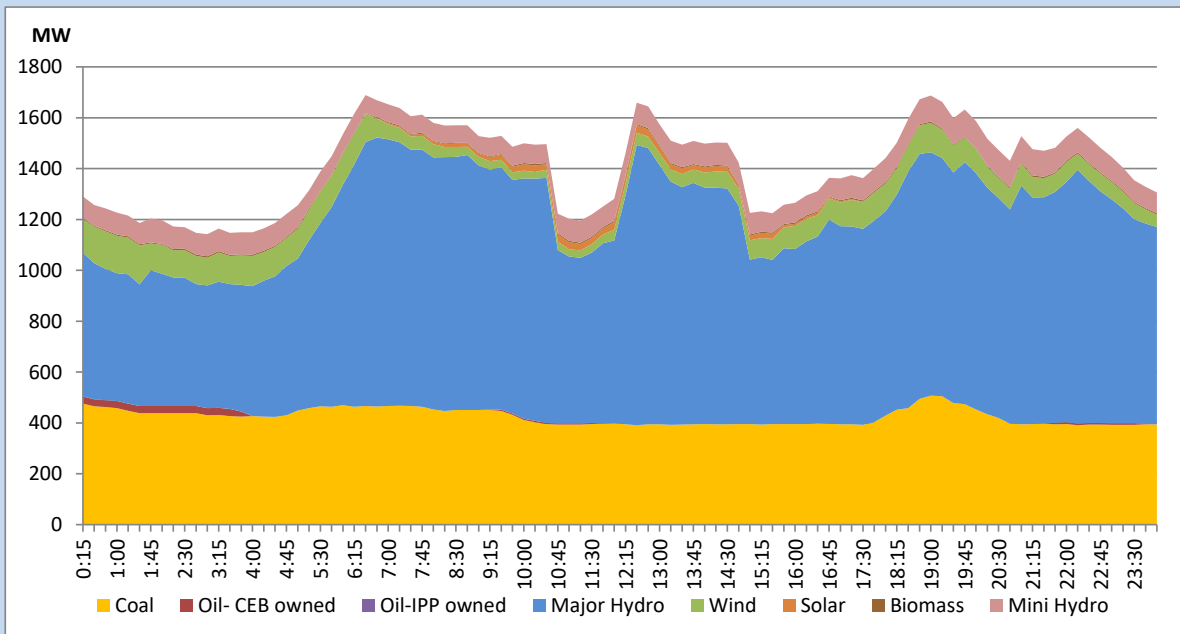


The above figures are excluding contribution from Roof Top Solar, 1MW solar, certain Wind plants and Mini Hydro plants

## Daily Load Curve of the Previous day

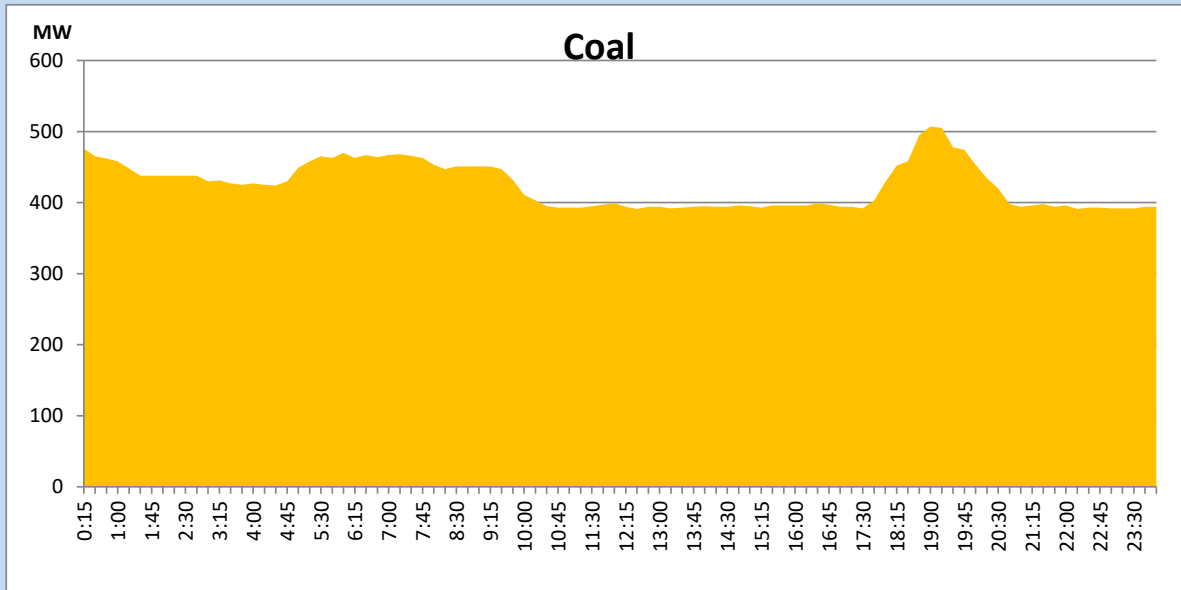
August 28, 2022

Solar and wind data is based on Telemetered Power Stations only



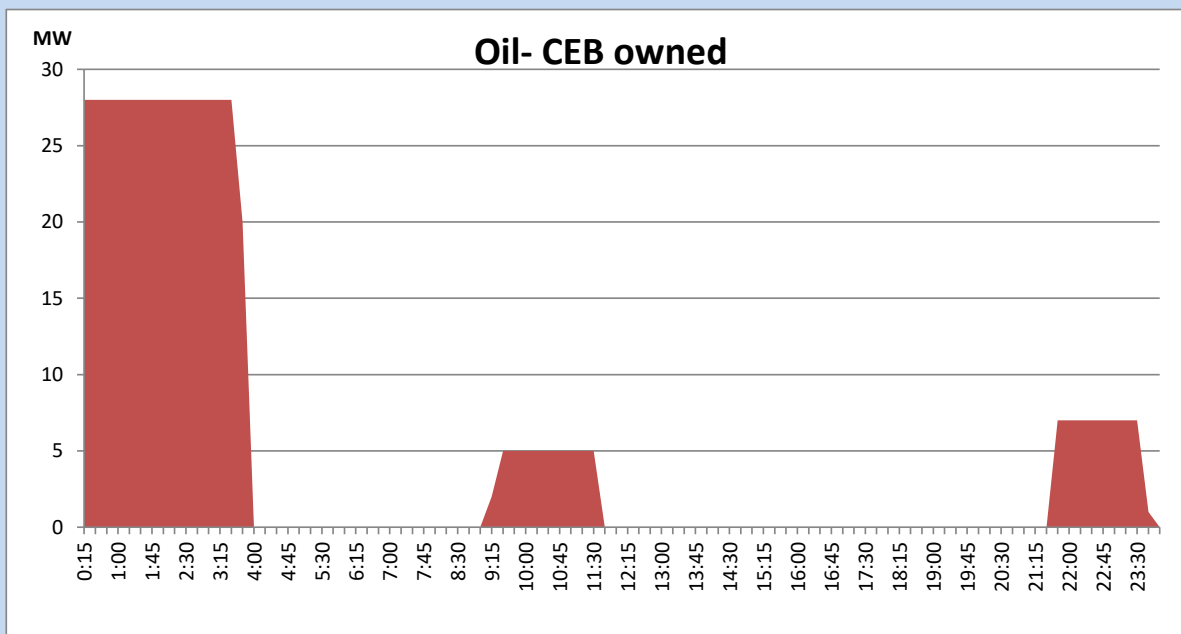
## Coal Generation during the Previous day

August 28, 2022



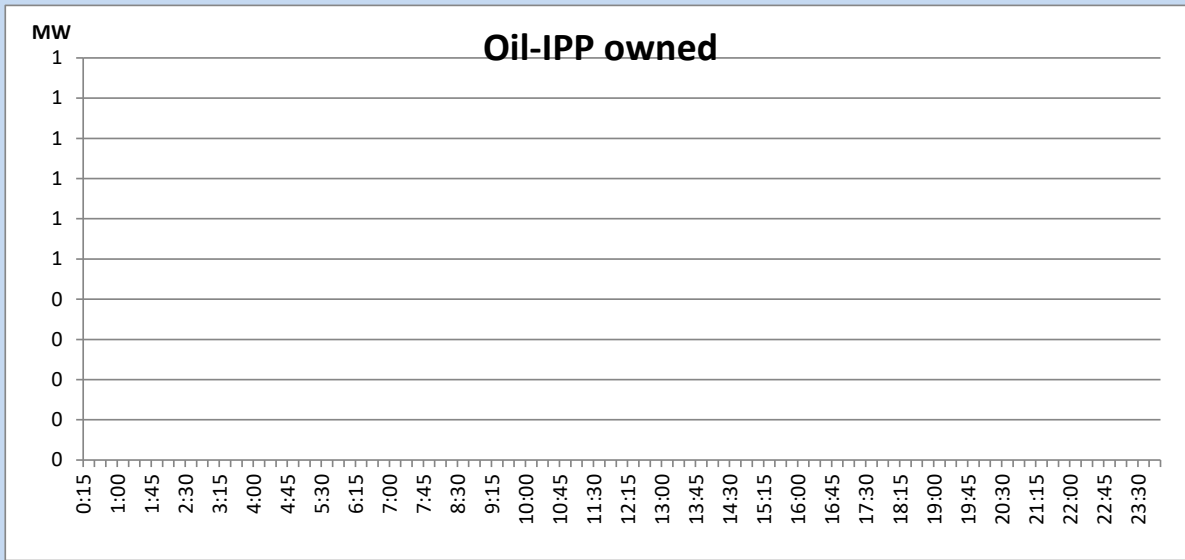
## CEB Oil Plant Generation during the Previous day

August 28, 2022



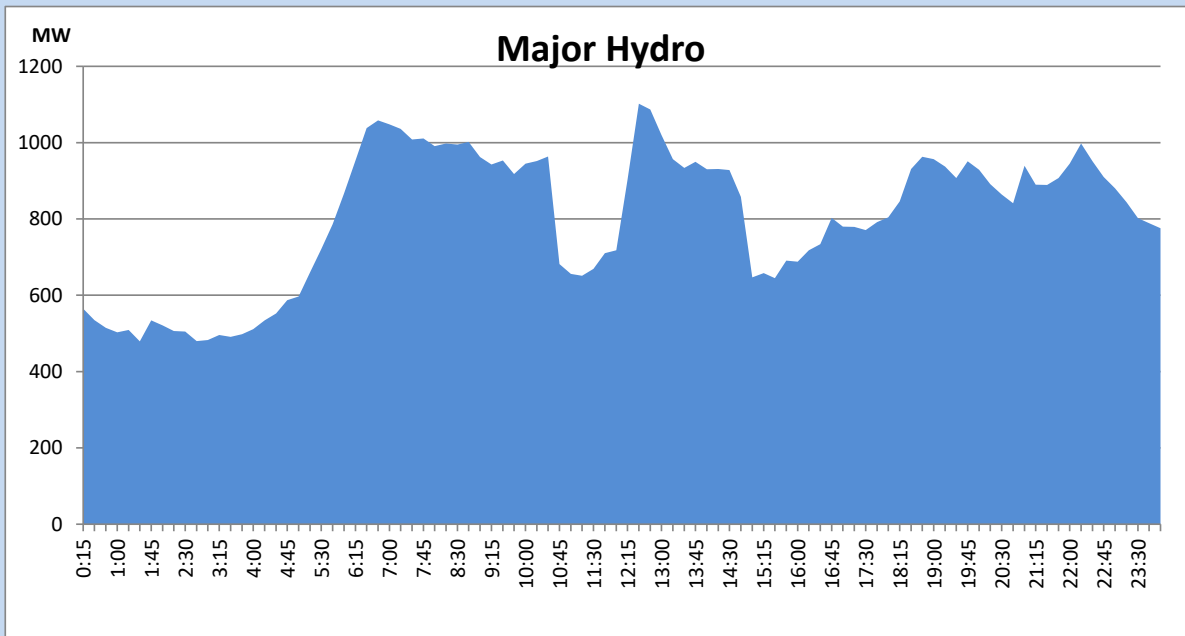
IPP Oil Plant Generation during the Previous day

August 28, 2022



Major Hydro Generation during the Previous day

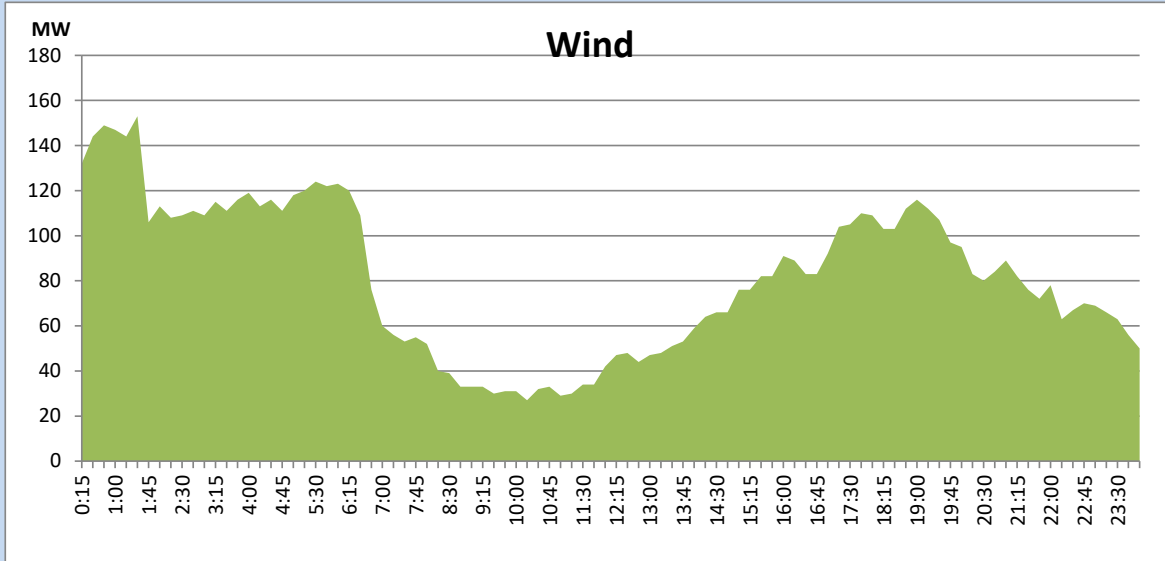
August 28, 2022



## Wind Generation during the Previous day

August 28, 2022

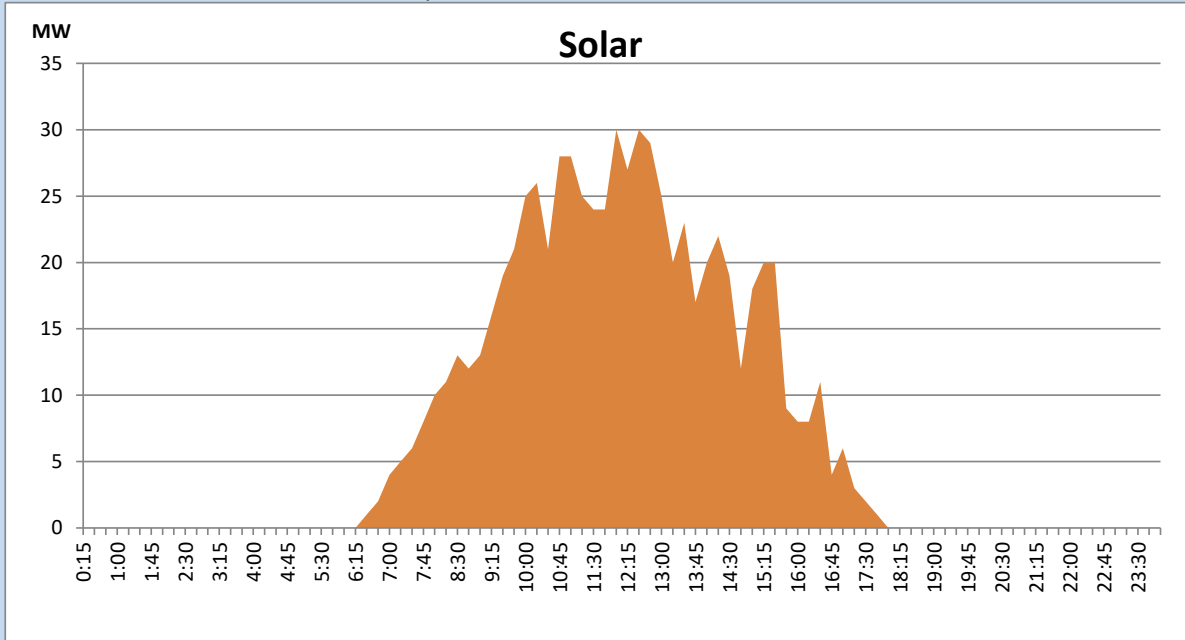
Based on Telemetered Power Stations only



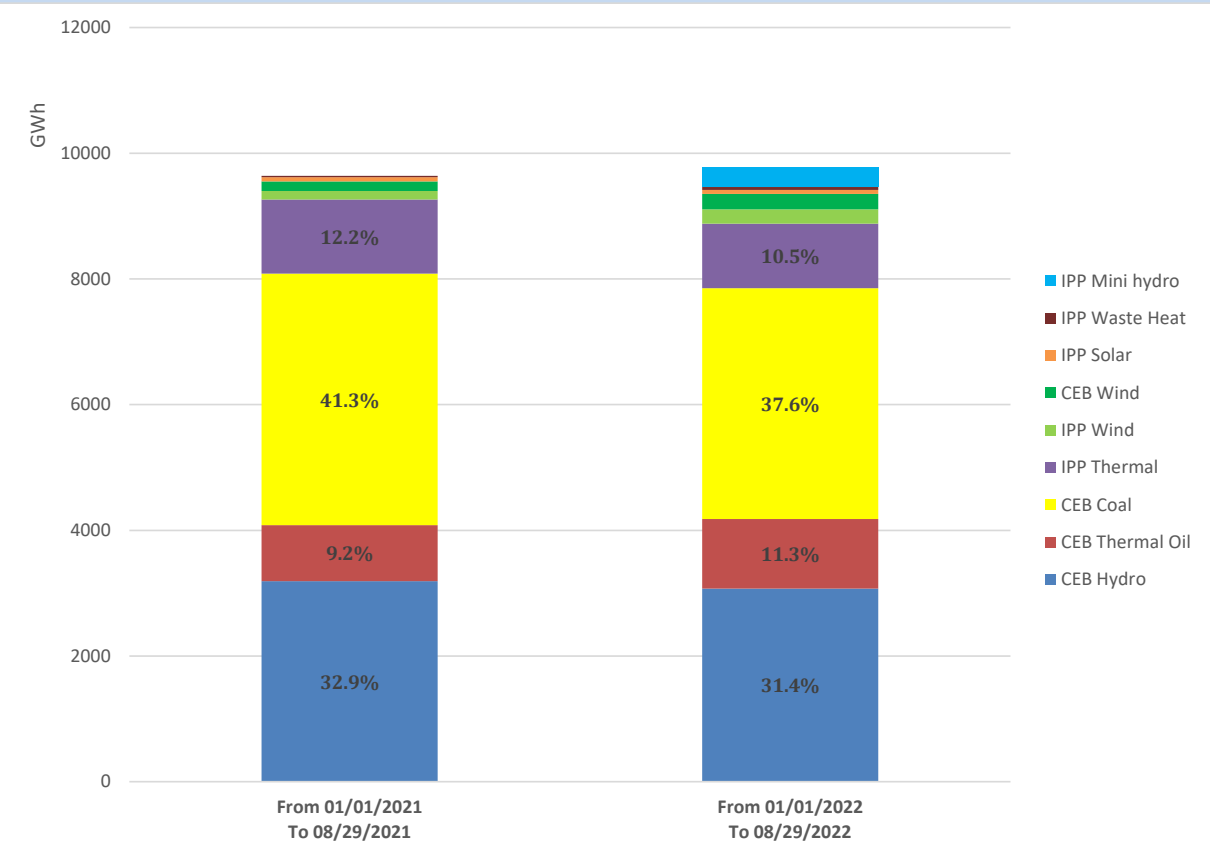
## Solar Generation during the Previous day

August 28, 2022

Based on Telemetered Power Stations only



# Cumulative Dispatch Comparison with Last Year



## Thermal Plant Fuel types

Power Station	Primary Fuel
CEB Thermal	
Sapugaskanda 1	Heavy Fuel
Sapugaskanda 2	Heavy Fuel
Kelanitissa Small Gas Turbines	Auto Diesel
GT 7 - Kelanitissa	Auto Diesel
Kelanitissa CCY	Naphtha or Diesel
Lakvijaya 1	Coal
Lakvijaya 2	Coal
Lakvijaya 3	Coal
Uthuru Janani	Heavy Fuel
Barge CEB	Heavy Fuel

Power Station	Primary Fuel
Private Thermal	
Sojitz - Kelanitissa	Auto Diesel
West Coast	Auto Diesel / Heavy Fuel
ACE Matara	Heavy Fuel
ACE Embilipitiya	Heavy Fuel

## Major Incidents during the day -as reported by CEB morning of

August 30, 2022

- 1) Rotational manual load shedding was carried out from 05:30 hrs to 08:30 hrs & 13:00 hrs to 22:00 hrs.
- 2) Wimalasurendra GSS 132/33kV T/F 02 tripped at 08:54 hrs due to the operation of differential protection and restored at 14:10 hrs.