

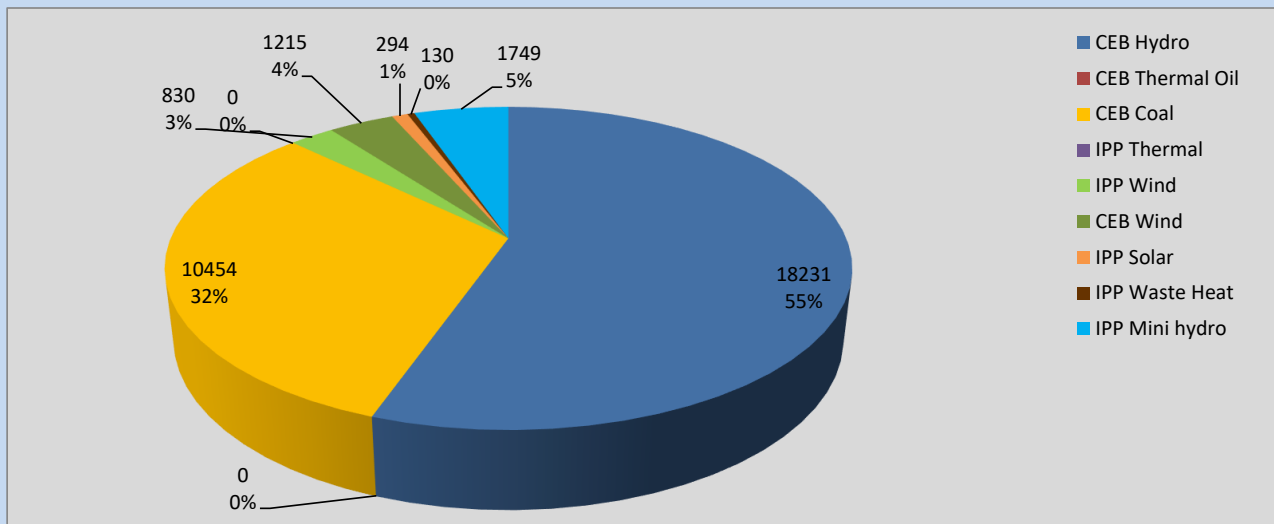
# Generation and Reservoirs Statistics

August 28, 2022



PUBLIC UTILITIES COMMISSION OF SRI LANKA

## Daily Generation Mix in MWh



**Total Generation** **32,903 MWh**

Note: Above data is excluding contribution from Roof Top Solar, 1MW Solar and certain Mini Hydro plants

## Cumulative Dispatch

Note: Following data is Excluding contribution from Roof Top Solar, 1MW solar and Mini Hydro plants

### For Current Month

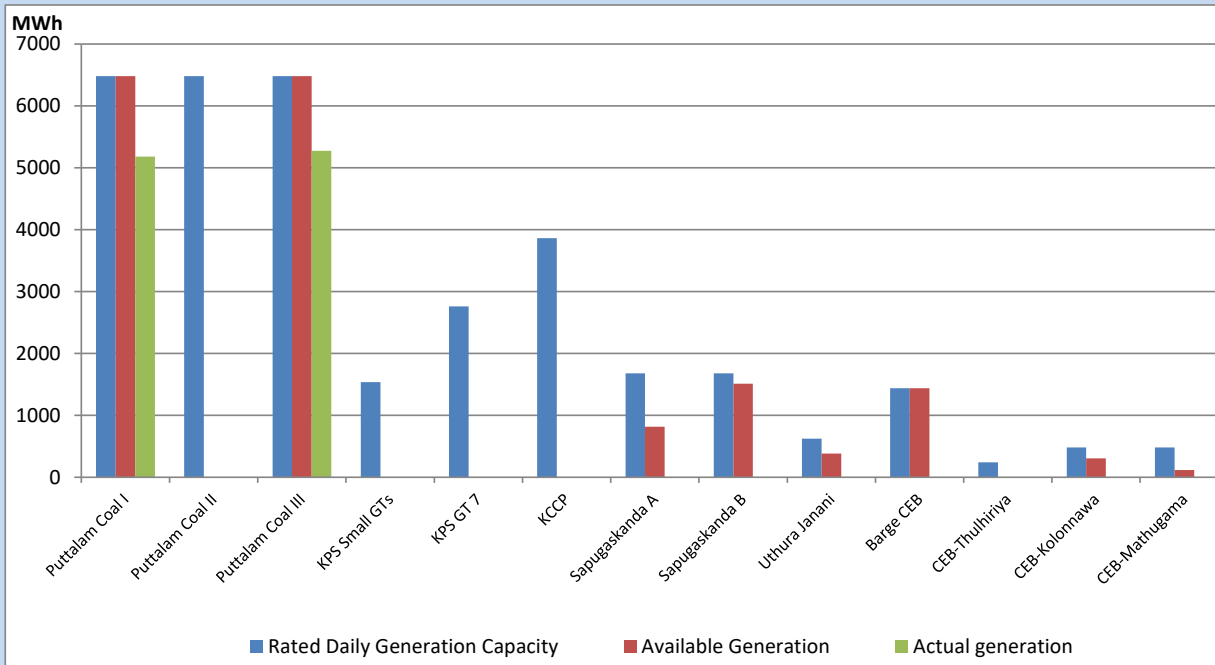
Category	Dispatch (GWh)	Percentage
CEB Hydro	573.24	53.15%
CEB Thermal Oil	51.41	4.77%
CEB Coal	255.43	23.68%
IPP Thermal	53.32	4.94%
SPP Wind	45.30	4.20%
CEB Wind	43.27	4.01%
SPP Solar	7.71	0.71%
SPP Solid Waste	4.38	0.41%
Mini Hydro	44.52	4.13%
<b>Total</b>	<b>1,078.58</b>	

### For Current Year

Category	Dispatch (GWh)	Percentage
CEB Hydro	3,071.4	31.44%
CEB Thermal Oil	1,106.8	11.33%
CEB Coal	3,675.1	37.62%
IPP Thermal	1,025.8	10.50%
SPP Wind	229.3	2.35%
CEB Wind	244.5	2.50%
SPP Solar	61.7	0.63%
SPP Solid Waste	48.4	0.50%
Mini Hydro	305.5	3.13%
<b>Total</b>	<b>9,768.2</b>	

## CEB owned Thermal Plant Dispatch

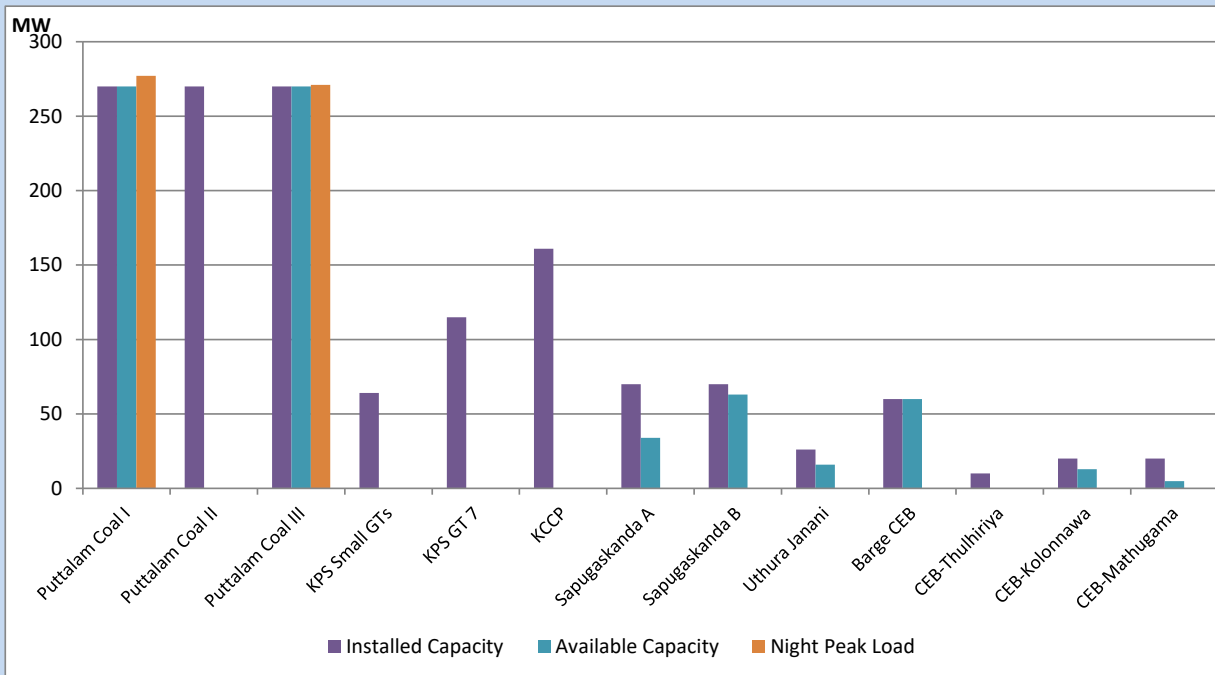
August 28, 2022



Available Generation is estimated based on plant availability at 6.00am on

August 29, 2022

## CEB owned Thermal Plant Loading at the Night Peak



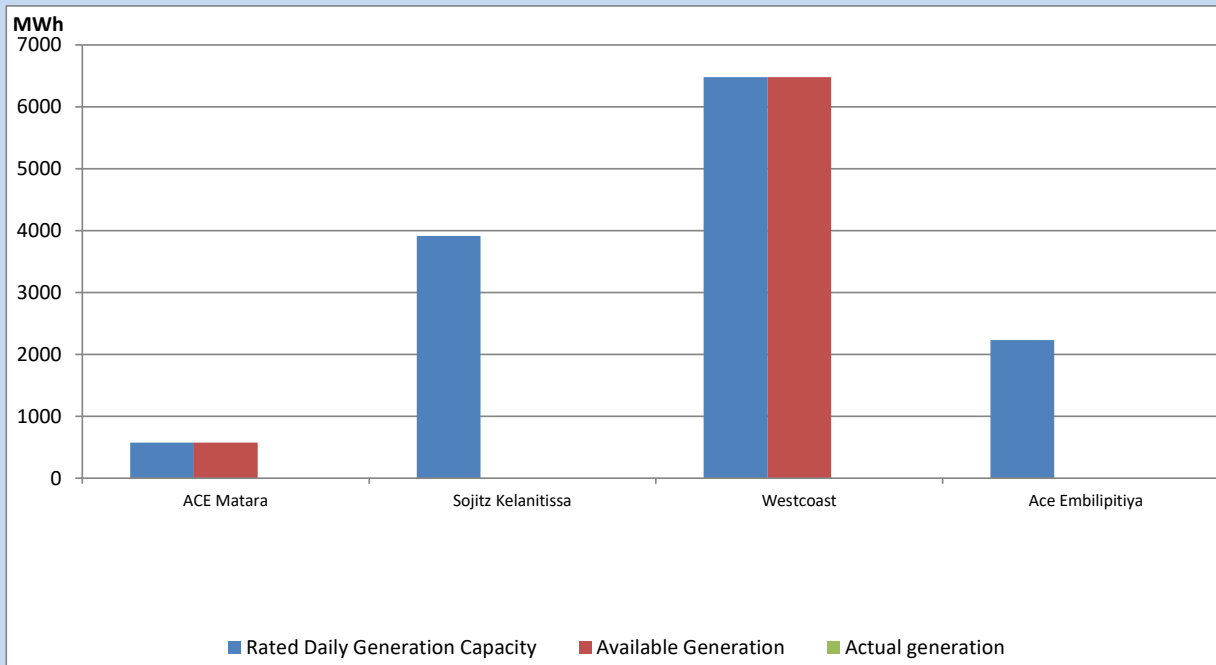
Note- Plant availability is recorded at 6.00 am on

August 29, 2022

## IPP owned Thermal Plant Dispatch

August 28, 2022

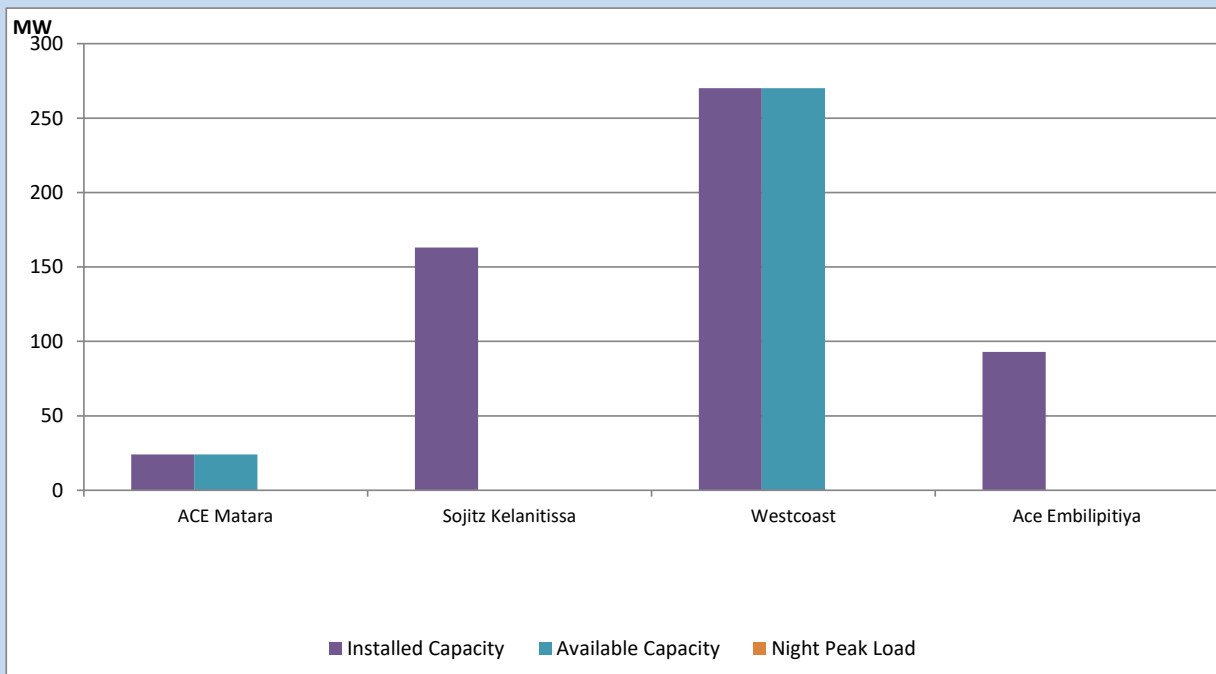
Asia Power, V Power Pallekale, Vpower Galle, V Power Horana, Vpower Hambantota, Vpower Valachchena and Altaqa Mahiyanganaya are not available due to expiration of PPAs



Available Generation is estimated based on plant availability at 6.00am on

August 29, 2022

## IPP owned Thermal Plant Loading at the Night Peak

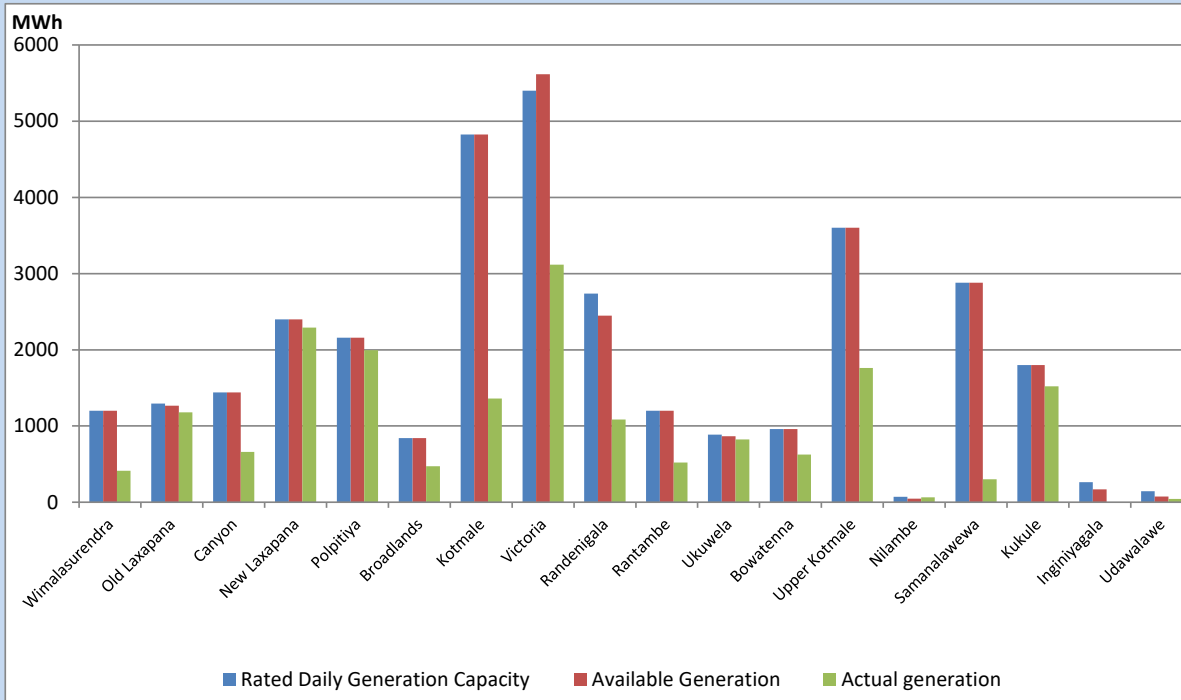


Note- Plant availability is recorded at 6.00 am on

August 29, 2022

## Major Hydro Plant Dispatch

August 28, 2022

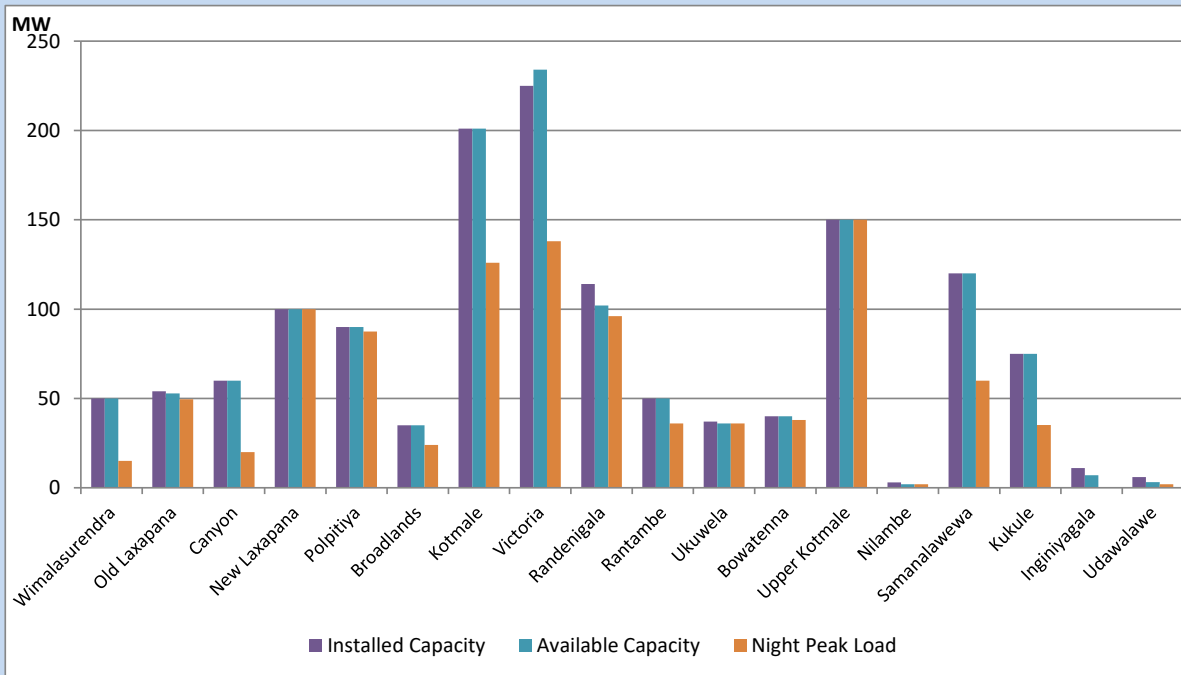


Available Generation is estimated based on plant availability at 6.00am on August 29, 2022  
 Broadlands power plant is operating in the Commissioning Stage

August 29, 2022

## Major Hydro Plant Loading at Night Peak

August 28, 2022



Note- Plant availability is recorded at 6.00 am on August 29, 2022  
 Broadlands power plant is operating in the Commissioning Stage

## Summary of Major Plant performance

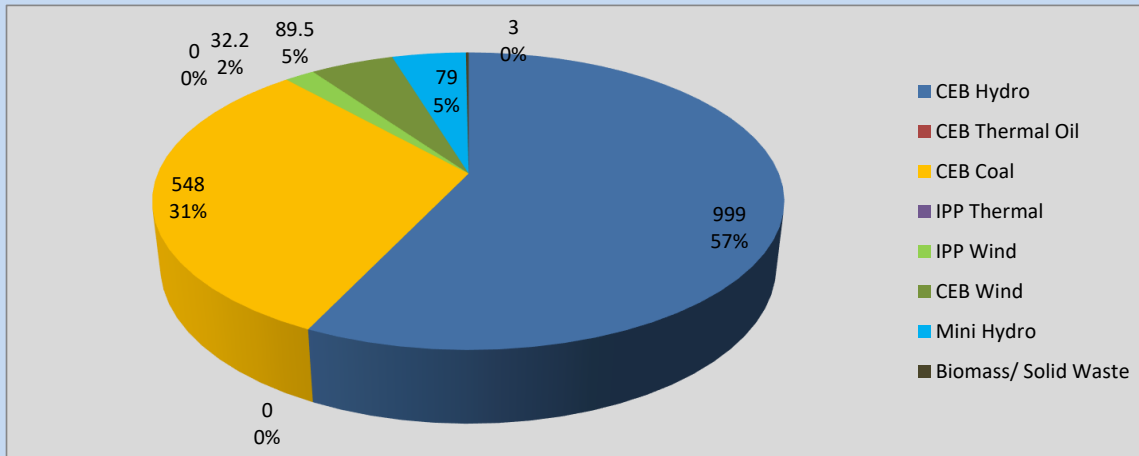
Plant	Installed Capacity	Plant Availability	Night peak Load	Plant Dispatch
	(MW)	(MW)	(MW)	(MWh)
Wimalasurendra	50	50	15	414
Old Laxapana	54	53	50	1,180
Canyon	60	60	20	659
New Laxapana	100	100	100	2,292
Polpitiya	90	90	87	1,994
Broadlands	35	35	24	472
Kotmale	201	201	126	1,360
Victoria	225	234	138	3,116
Randenigala	114	102	96	1,085
Rantambe	50	50	36	521
Ukuwela	37	36	36	824
Bowatenna	40	40	38	626
Upper Kotmale	150	150	150	1,760
Nilambe	3	2	2	64
Samanalawewa	120	120	60	300
Kukule	75	75	35	1,520
Inginiyagala	11	7	0	0
Udawalawe	6	3	2	44
Puttalam Coal I	270	270	277	5,180
Puttalam Coal II	270	0	0	0
Puttalam Coal III	270	270	271	5,274
KPS Small GTs	64	0	0	0
KPS GT 7	115	0	0	0
KCCP	161	0	0	0
Sapugaskanda A	70	34	0	0
Sapugaskanda B	70	63	0	0
Uthura Janani	26	16	0	0
Barge CEB	60	60	0	0
CEB-Thulhiriya	10	0	0	0
CEB-Kolonnawa	20	13	0	0
CEB-Mathugama	20	5	0	0
ACE Matara	24	24	0	0
Sojitz Kelanitissa	163	0	0	0
West Coast	270	270	0	0
ACE Embilipitiya	93	0	0	0
<b>Total</b>	<b>3,397</b>	<b>2,433</b>	<b>1,767</b>	<b>32,903</b>

Plant availability is the availability recorded at 6 am on

August 29, 2022

## Contribution to the Night Peak in MW

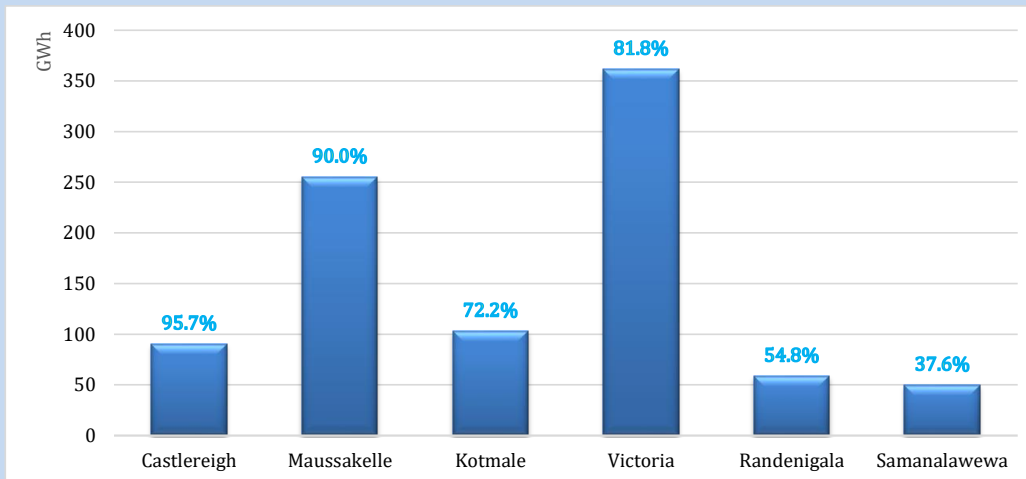
August 28, 2022



Night Peak*	1,750.8 MW
Day Peak	1,334.6 MW
Minimum Demand	1,108.6 MW

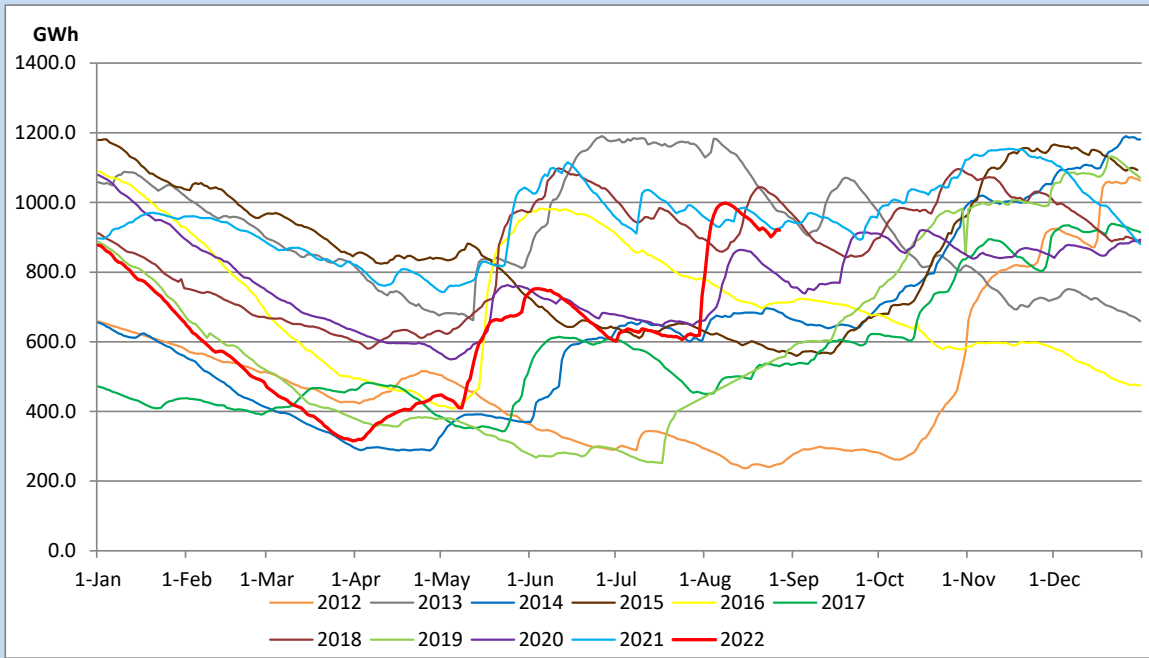
Above figures are excluding contribution from Roof Top Solar, 1MW solar, certain Wind plants and Mini Hydro plants

## Reservoir Levels - as at 06.00 Hr on August 29, 2022

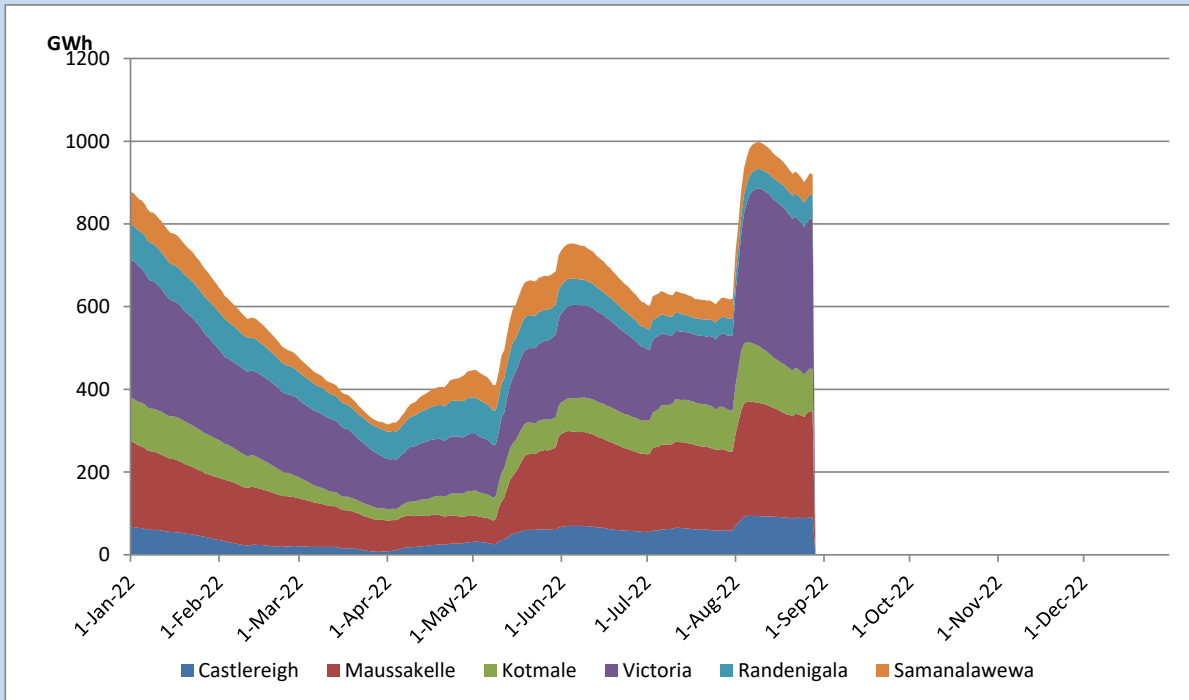


Total Reservoir Level	920.4 GWh
% of Total capacity	76.4%

## Comparison of Total Reservoir Storage Levels with Past Years

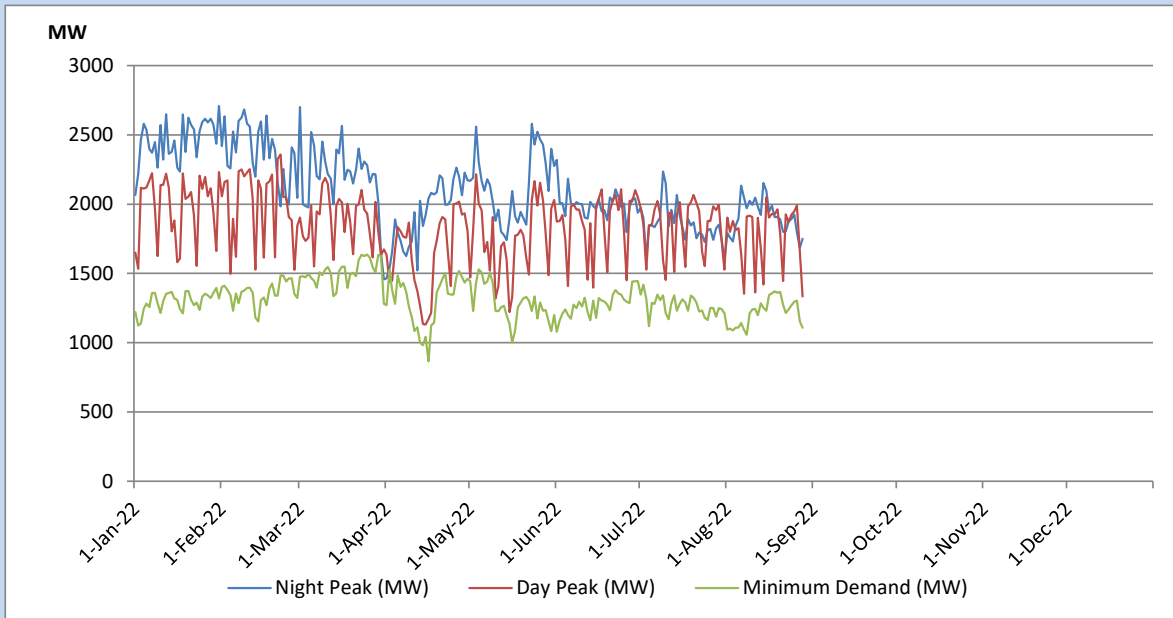


## Variation of Major Hydro Reservoir Levels in the current year (GWh)





## Variation of Demand during the current year

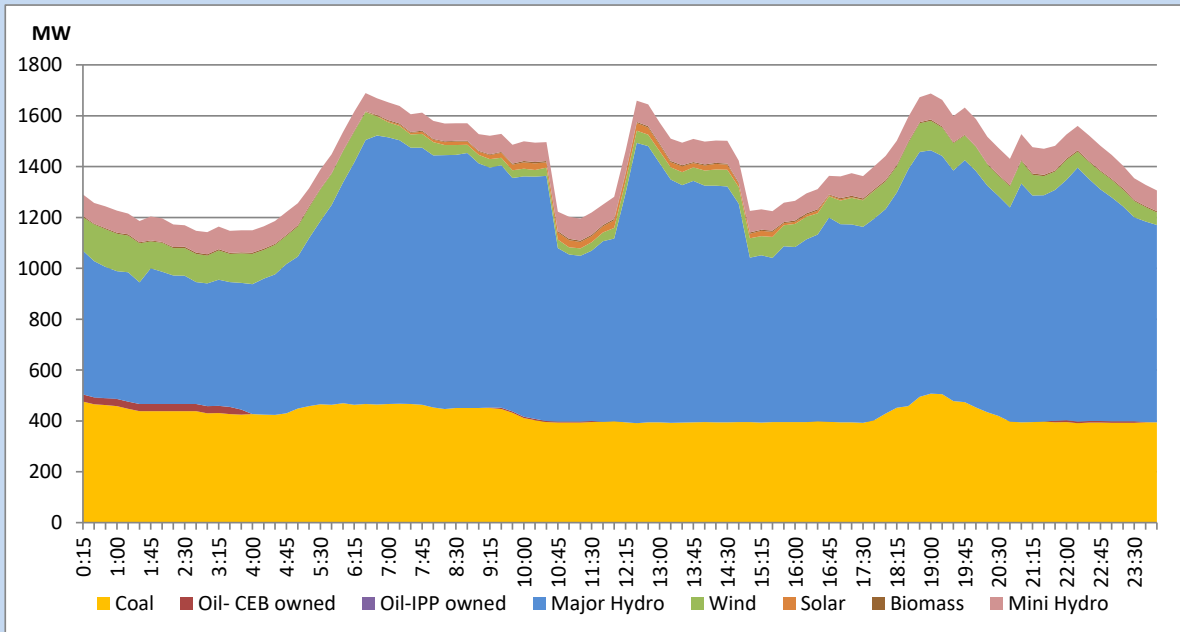


The above figures are excluding contribution from Roof Top Solar, 1MW solar, certain Wind plants and Mini Hydro plants

## Daily Load Curve of the Previous day

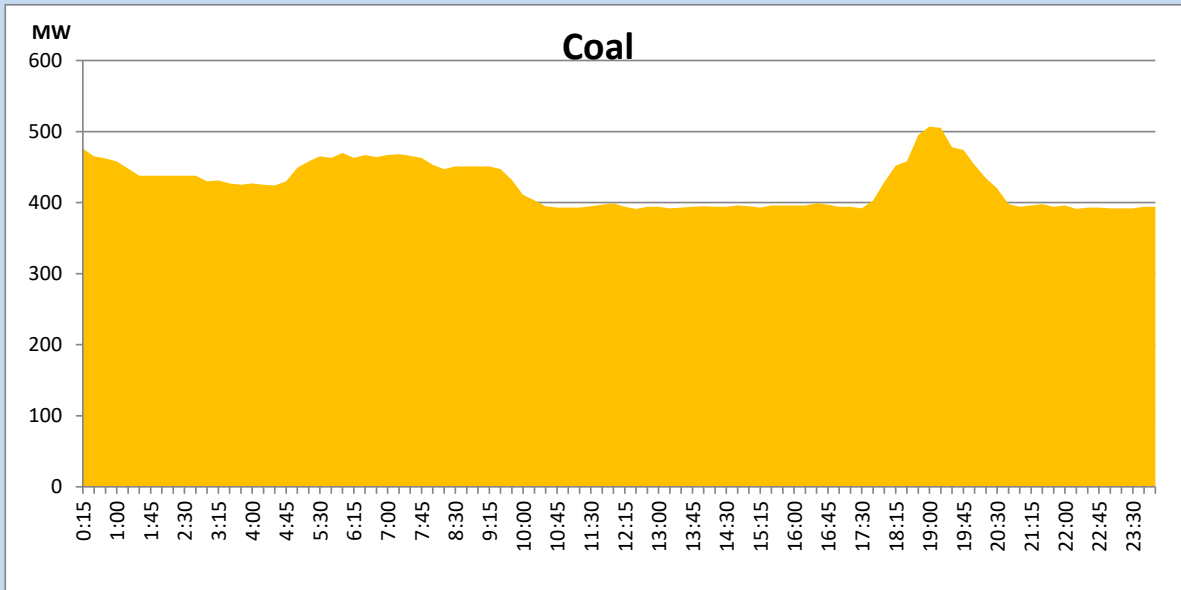
August 27, 2022

Solar and wind data is based on Telemetered Power Stations only



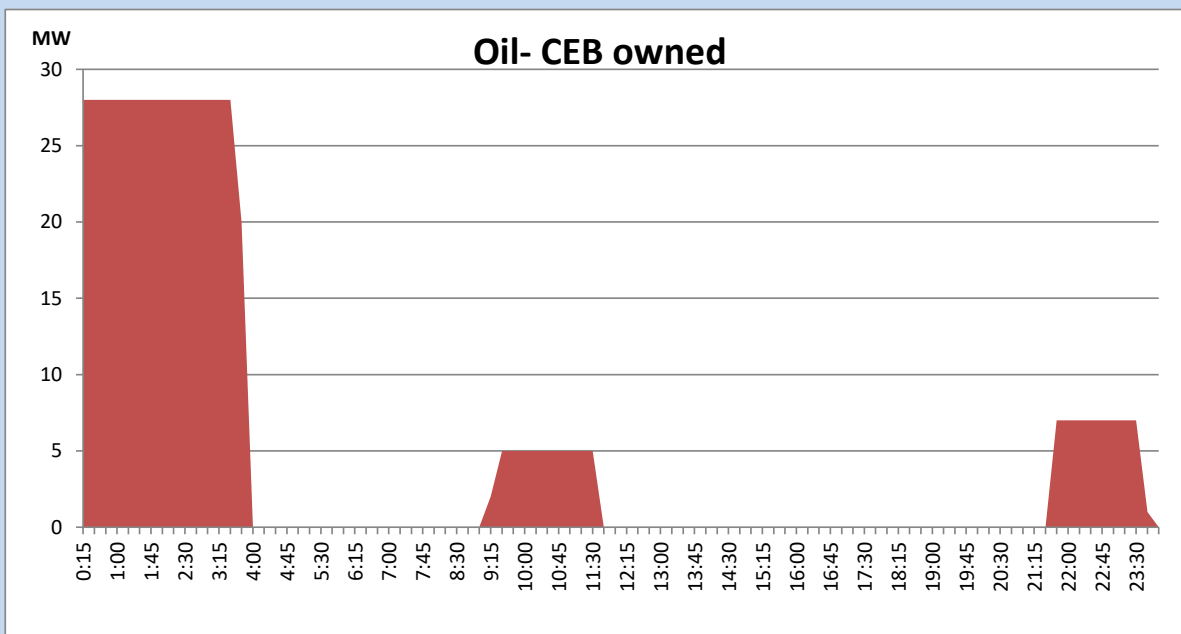
## Coal Generation during the Previous day

August 27, 2022



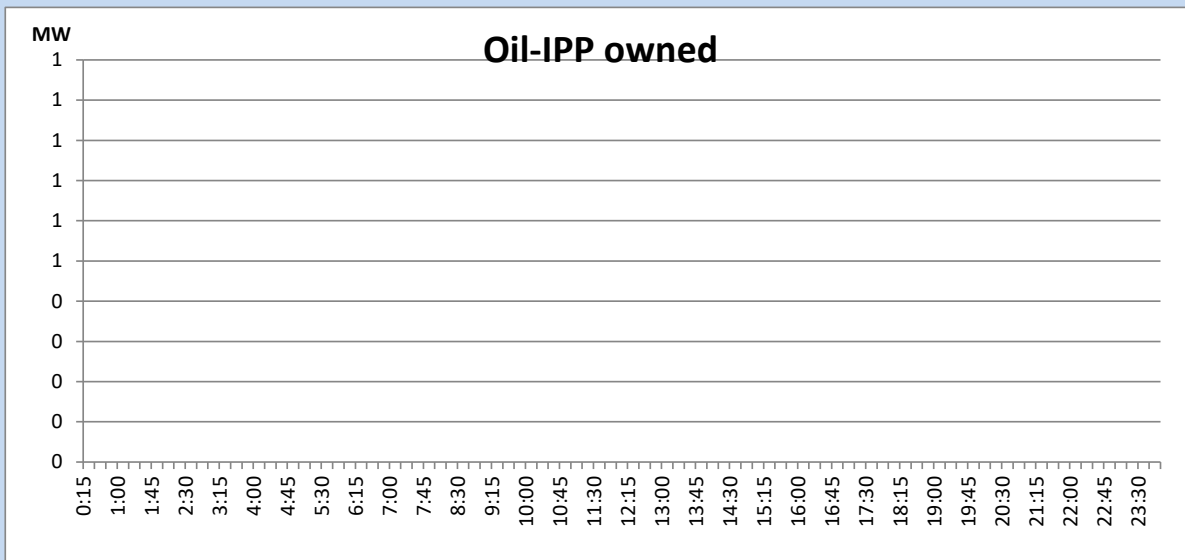
## CEB Oil Plant Generation during the Previous day

August 27, 2022



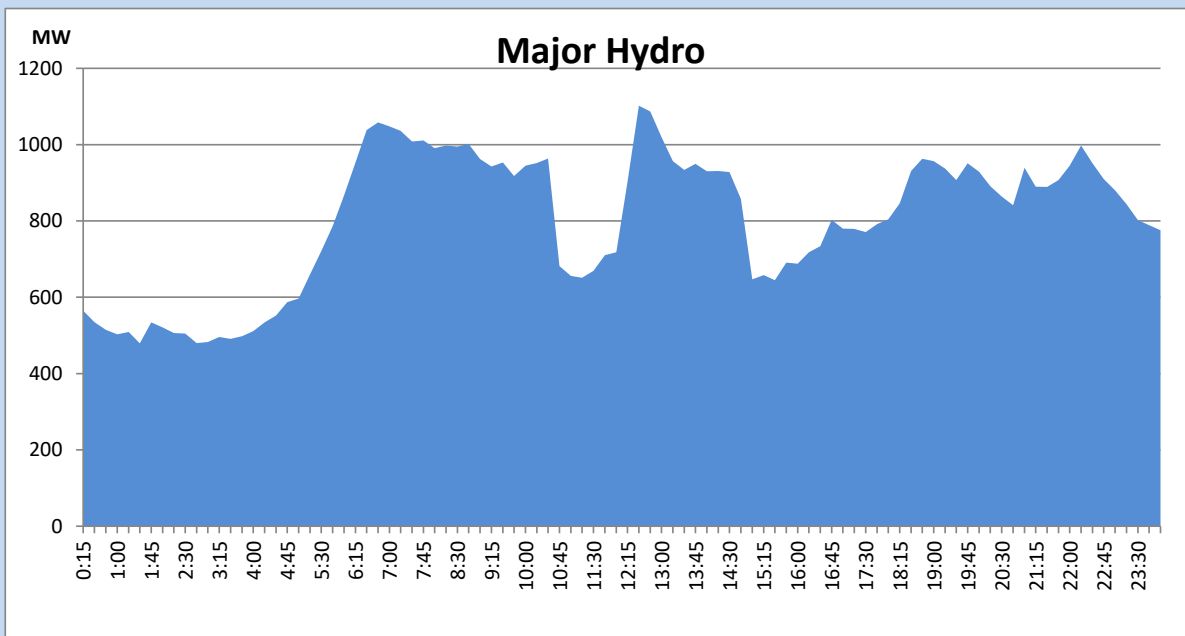
## IPP Oil Plant Generation during the Previous day

August 27, 2022



## Major Hydro Generation during the Previous day

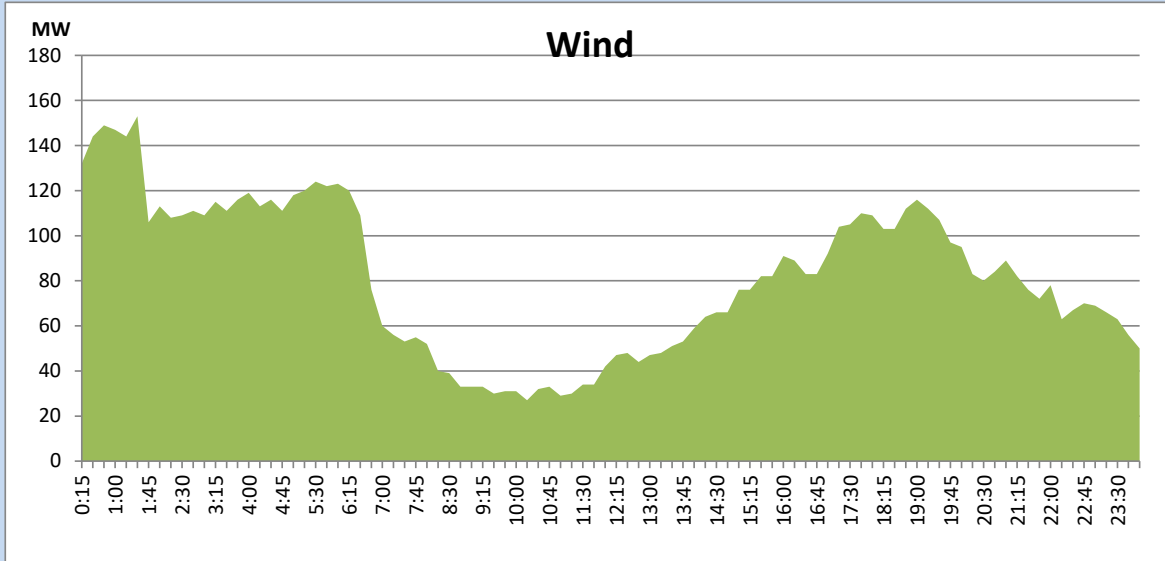
August 27, 2022



## Wind Generation during the Previous day

August 27, 2022

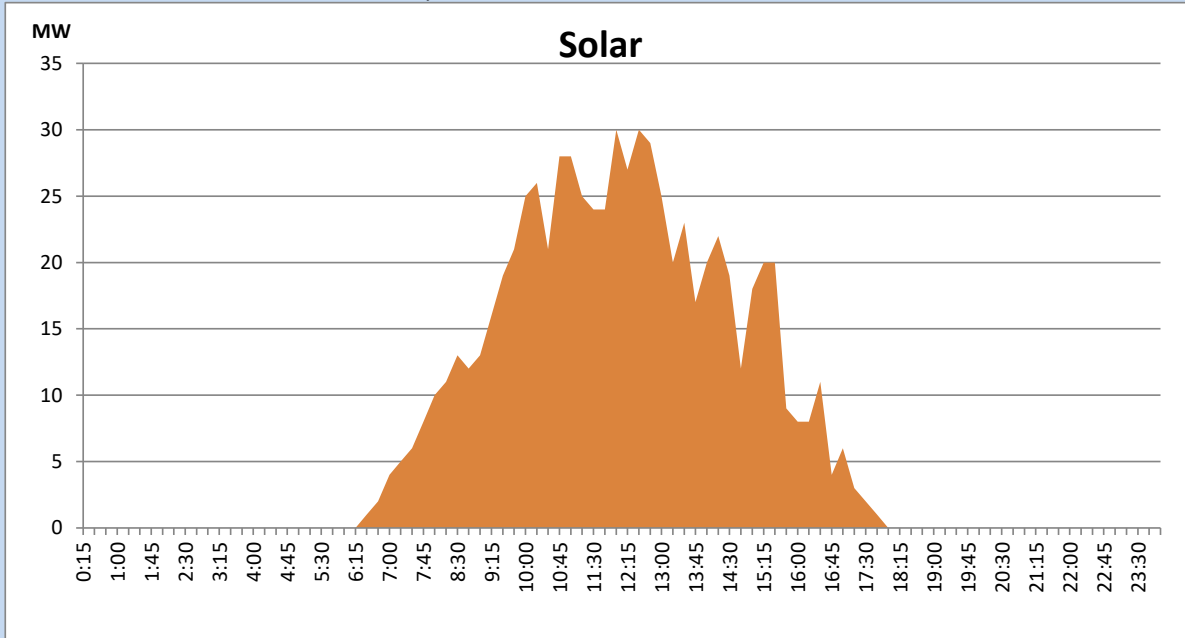
Based on Telemetered Power Stations only



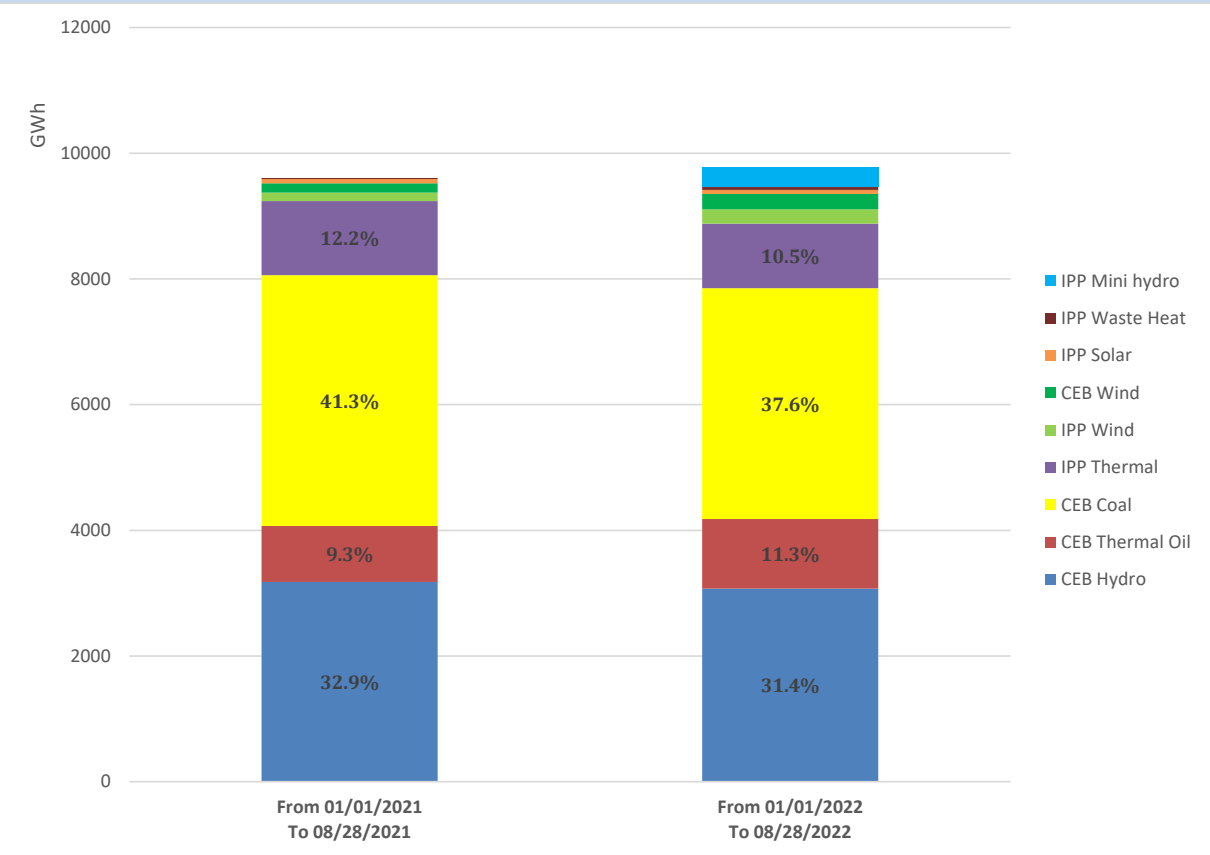
## Solar Generation during the Previous day

August 27, 2022

Based on Telemetered Power Stations only



# Cumulative Dispatch Comparison with Last Year



## Thermal Plant Fuel types

Power Station	Primary Fuel
CEB Thermal	
Sapugaskanda 1	Heavy Fuel
Sapugaskanda 2	Heavy Fuel
Kelanitissa Small Gas Turbines	Auto Diesel
GT 7 - Kelanitissa	Auto Diesel
Kelanitissa CCY	Naphtha or Diesel
Lakvijaya 1	Coal
Lakvijaya 2	Coal
Lakvijaya 3	Coal
Uthuru Janani	Heavy Fuel
Barge CEB	Heavy Fuel

Power Station	Primary Fuel
Private Thermal	
Sojitz - Kelanitissa	Auto Diesel
West Coast	Auto Diesel / Heavy Fuel
ACE Matara	Heavy Fuel
ACE Embilipitiya	Heavy Fuel

## Major Incidents during the day -as reported by CEB morning of

August 29, 2022

- 1) Rotational manual load shedding was carried out from 18:00 hrs to 21:00 hrs.
- 2) Veyangoda-New Chilaw cct 01 tripped and auto-reclosed at 00:51 hrs due to the operation of distance protection.