

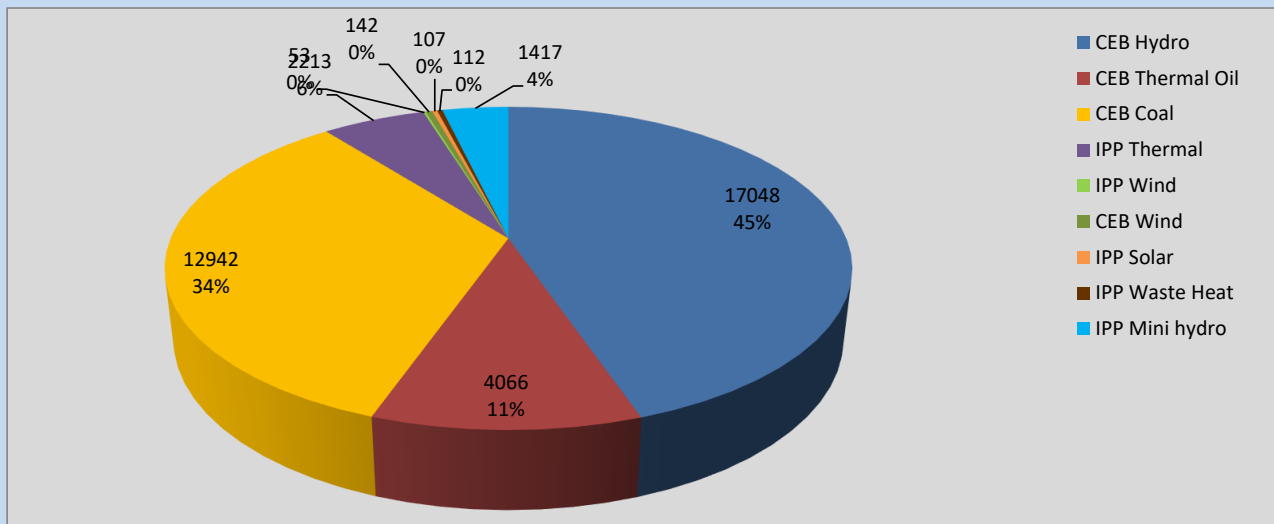
# Generation and Reservoirs Statistics

July 28, 2022



PUBLIC UTILITIES COMMISSION OF SRI LANKA

## Daily Generation Mix in MWh



Total Generation

**38,100 MWh**

Note: Above data is excluding contribution from Roof Top Solar, 1MW Solar and certain Mini Hydro plants

## Cumulative Dispatch

Note: Following data is Excluding contribution from Roof Top Solar, 1MW solar and Mini Hydro plants

### For Current Month

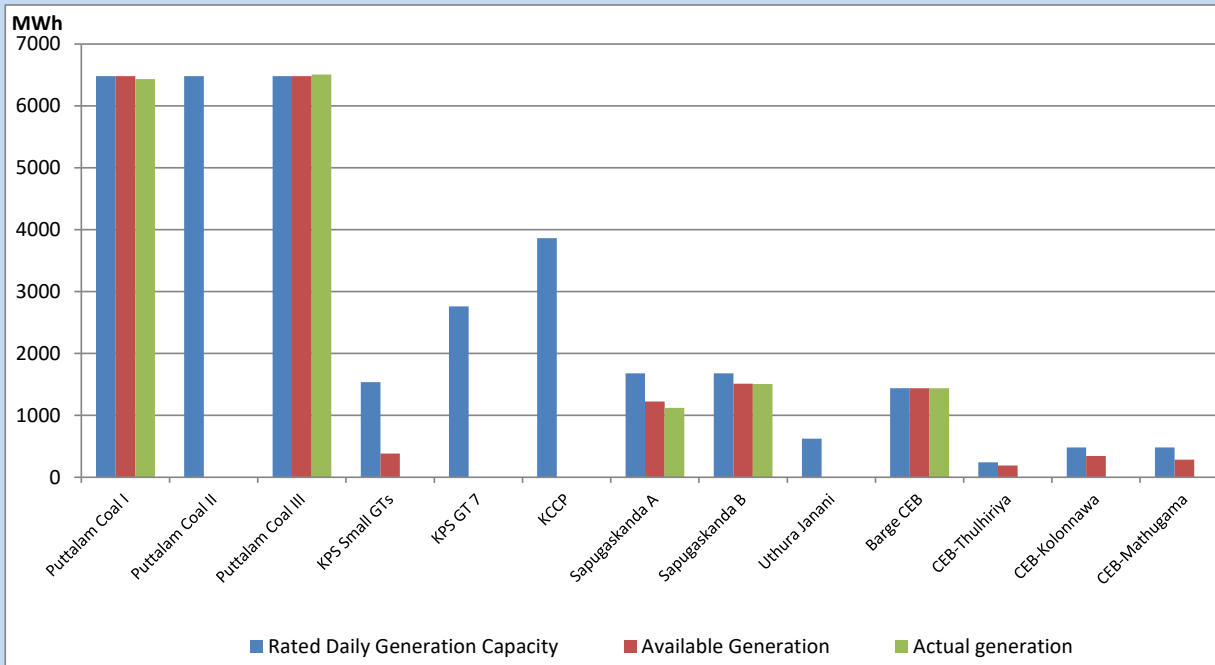
Category	Dispatch (GWh)	Percentage
CEB Hydro	402.19	37.43%
CEB Thermal Oil	104.67	9.74%
CEB Coal	353.37	32.89%
IPP Thermal	94.44	8.79%
SPP Wind	32.36	3.01%
CEB Wind	33.45	3.11%
SPP Solar	6.96	0.65%
SPP Solid Waste	5.44	0.51%
Mini Hydro	41.57	3.87%
<b>Total</b>	<b>1,074.45</b>	

### For Current Year

Category	Dispatch (GWh)	Percentage
CEB Hydro	2,453.5	28.59%
CEB Thermal Oil	1,044.8	12.17%
CEB Coal	3,381.6	39.40%
IPP Thermal	966.0	11.26%
SPP Wind	182.3	2.12%
CEB Wind	199.4	2.32%
SPP Solar	53.4	0.62%
SPP Solid Waste	43.9	0.51%
Mini Hydro	257.2	3.00%
<b>Total</b>	<b>8,581.8</b>	

## CEB owned Thermal Plant Dispatch

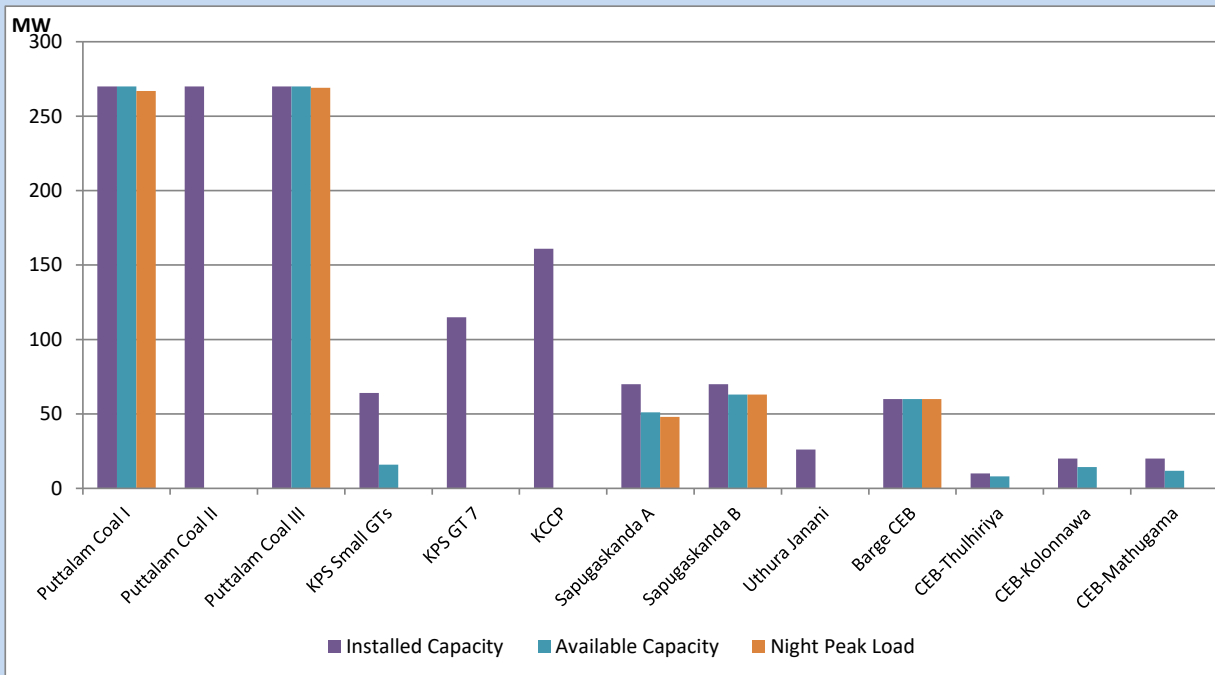
July 28, 2022



Available Generation is estimated based on plant availability at 6.00am on

July 29, 2022

## CEB owned Thermal Plant Loading at the Night Peak



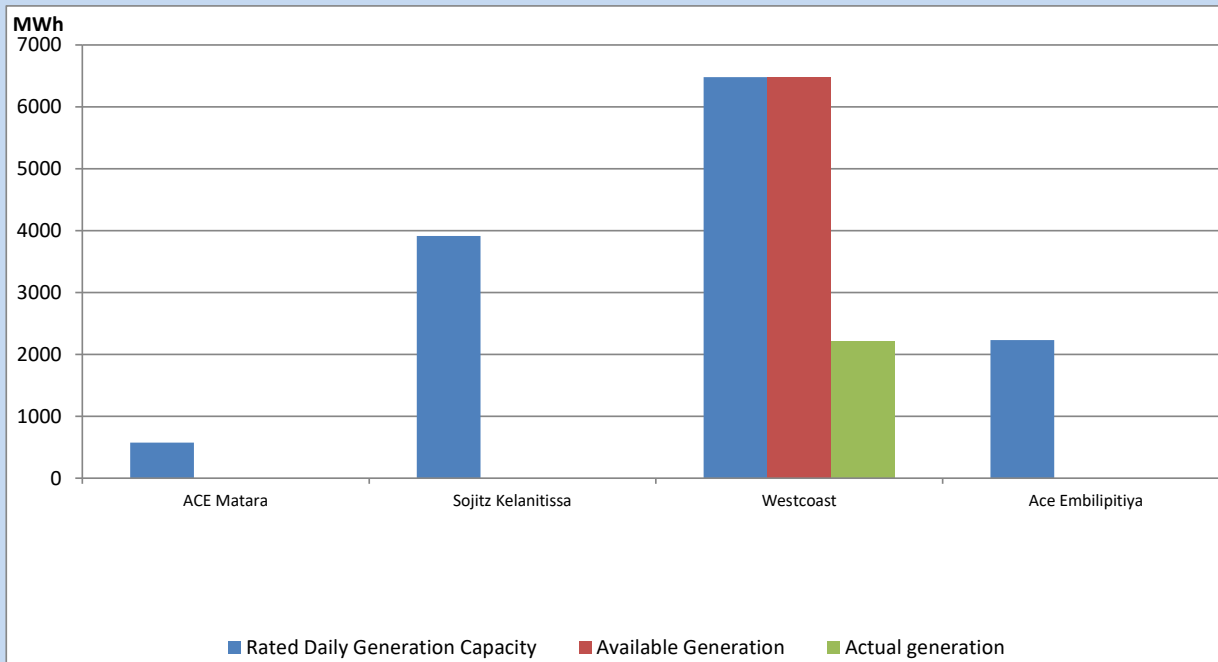
Note- Plant availability is recorded at 6.00 am on

July 29, 2022

## IPP owned Thermal Plant Dispatch

July 28, 2022

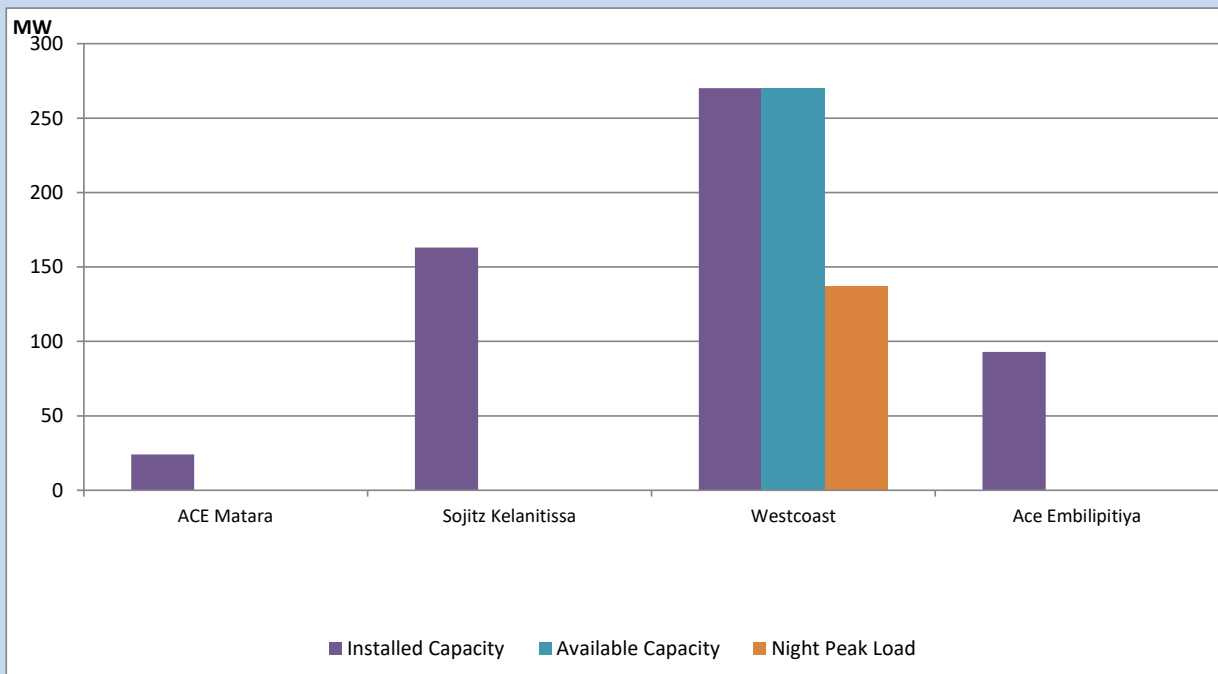
Asia Power, V Power Pallekale, Vpower Galle, V Power Horana, Vpower Hambantota, Vpower Valachchena and Altaqa Mahiyanganaya are not available due to expiration of PPAs



Available Generation is estimated based on plant availability at 6.00am on

July 29, 2022

## IPP owned Thermal Plant Loading at the Night Peak

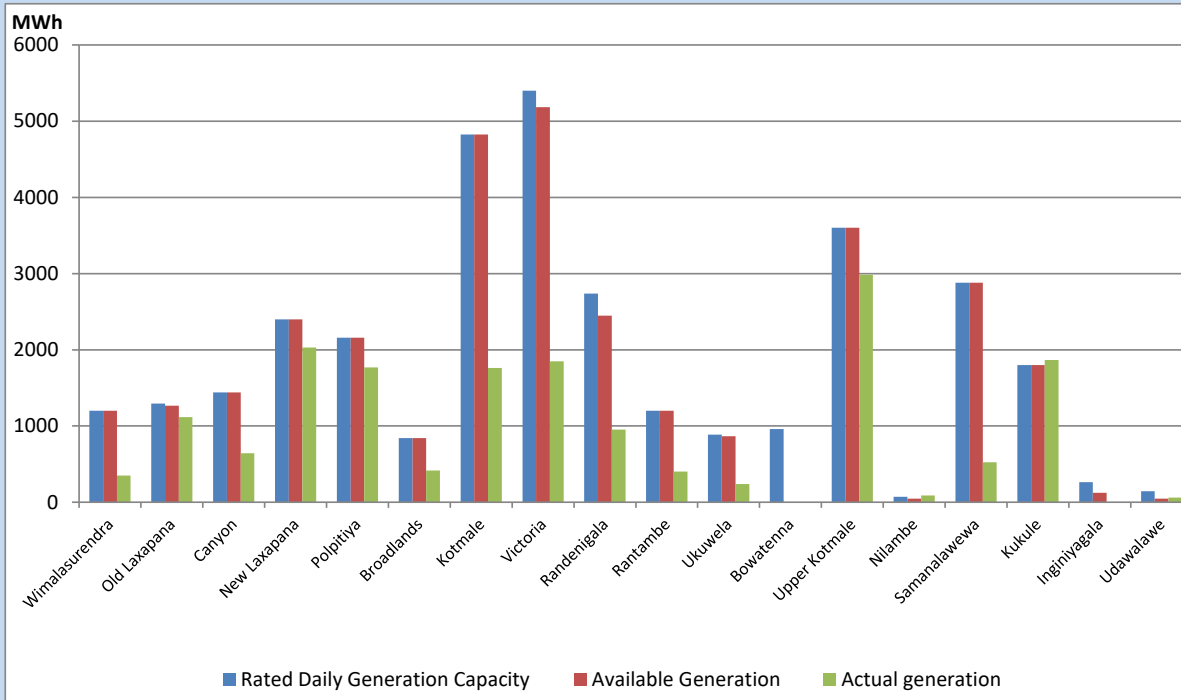


Note- Plant availability is recorded at 6.00 am on

July 29, 2022

## Major Hydro Plant Dispatch

July 28, 2022

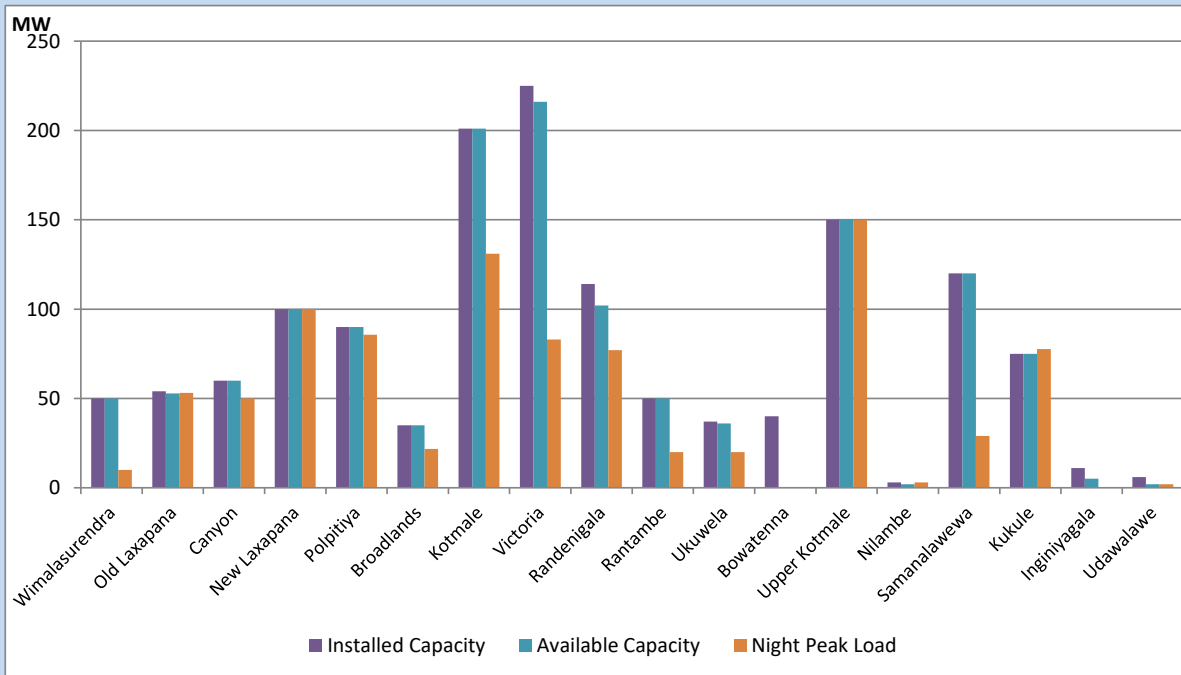


Available Generation is estimated based on plant availability at 6.00am on  
Broadlands power plant is operating in the Commissioning Stage

July 29, 2022

## Major Hydro Plant Loading at Night Peak

July 28, 2022



Note- Plant availability is recorded at 6.00 am on  
Broadlands power plant is operating in the Commissioning Stage

July 29, 2022

## Summary of Major Plant performance

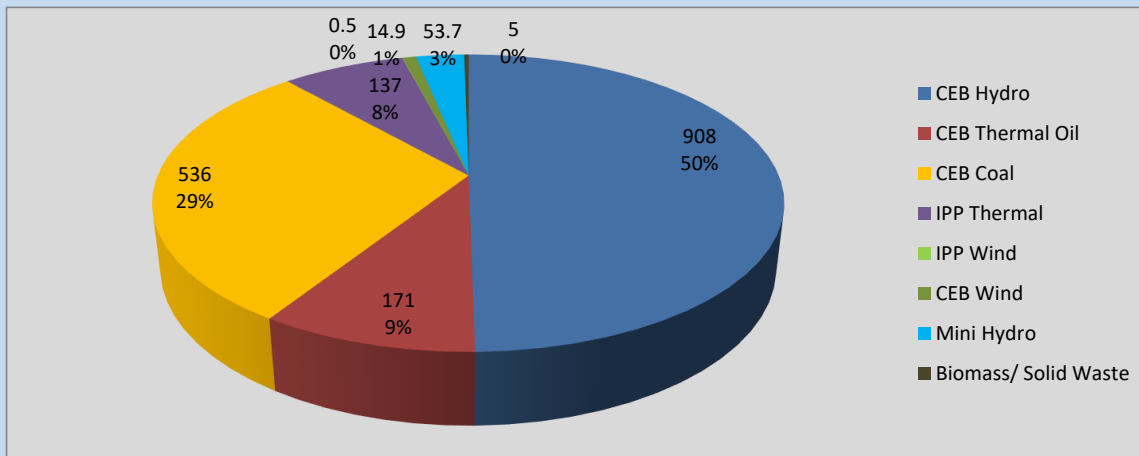
Plant	Installed Capacity	Plant Availability	Night peak Load	Plant Dispatch
	(MW)	(MW)	(MW)	(MWh)
Wimalasurendra	50	50	10	349
Old Laxapana	54	53	53	1,118
Canyon	60	60	50	643
New Laxapana	100	100	100	2,029
Polpitiya	90	90	86	1,769
Broadlands	35	35	22	417
Kotmale	201	201	131	1,760
Victoria	225	216	83	1,848
Randenigala	114	102	77	954
Rantambe	50	50	20	401
Ukuwela	37	36	20	238
Bowatenna	40	0	0	0
Upper Kotmale	150	150	150	2,986
Nilambe	3	2	3	87
Samanalawewa	120	120	29	523
Kukule	75	75	78	1,866
Inginiyagala	11	5	0	0
Udawalawe	6	2	2	60
Puttalam Coal I	270	270	267	6,435
Puttalam Coal II	270	0	0	0
Puttalam Coal III	270	270	269	6,507
KPS Small GTs	64	16	0	0
KPS GT 7	115	0	0	0
KCCP	161	0	0	0
Sapugaskanda A	70	51	48	1,122
Sapugaskanda B	70	63	63	1,507
Uthura Janani	26	0	0	0
Barge CEB	60	60	60	1,437
CEB-Thulhiriya	10	8	0	0
CEB-Kolonnawa	20	14	0	0
CEB-Mathugama	20	12	0	0
ACE Matara	24	0	0	0
Sojitz Kelanitissa	163	0	0	0
West Coast	270	270	137	2,213
ACE Embilipitiya	93	0	0	0
<b>Total</b>	<b>3,397</b>	<b>2,381</b>	<b>1,831</b>	<b>38,100</b>

Plant availability is the availability recorded at 6 am on

July 29, 2022

## Contribution to the Night Peak in MW

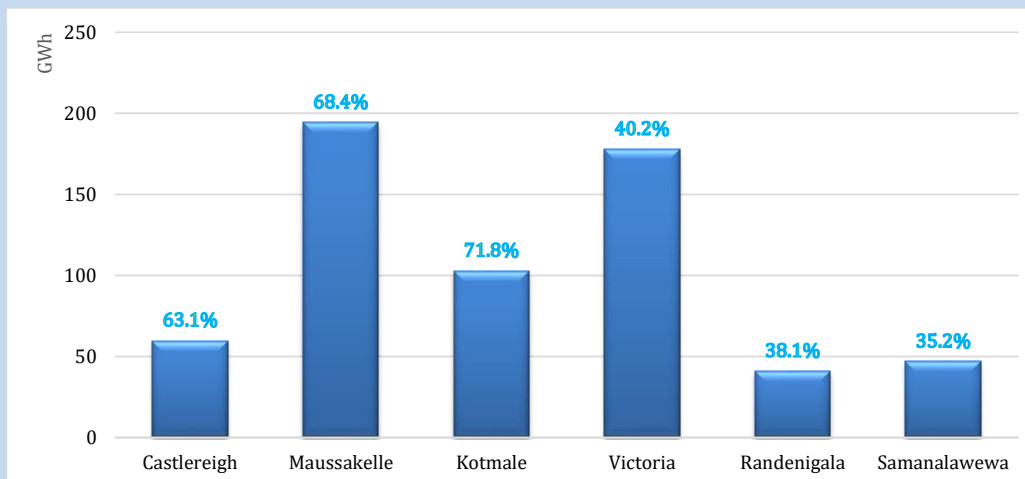
July 28, 2022



Night Peak*	1,826.2 MW
Day Peak	1,956.3 MW
Minimum Demand	1,187.9 MW

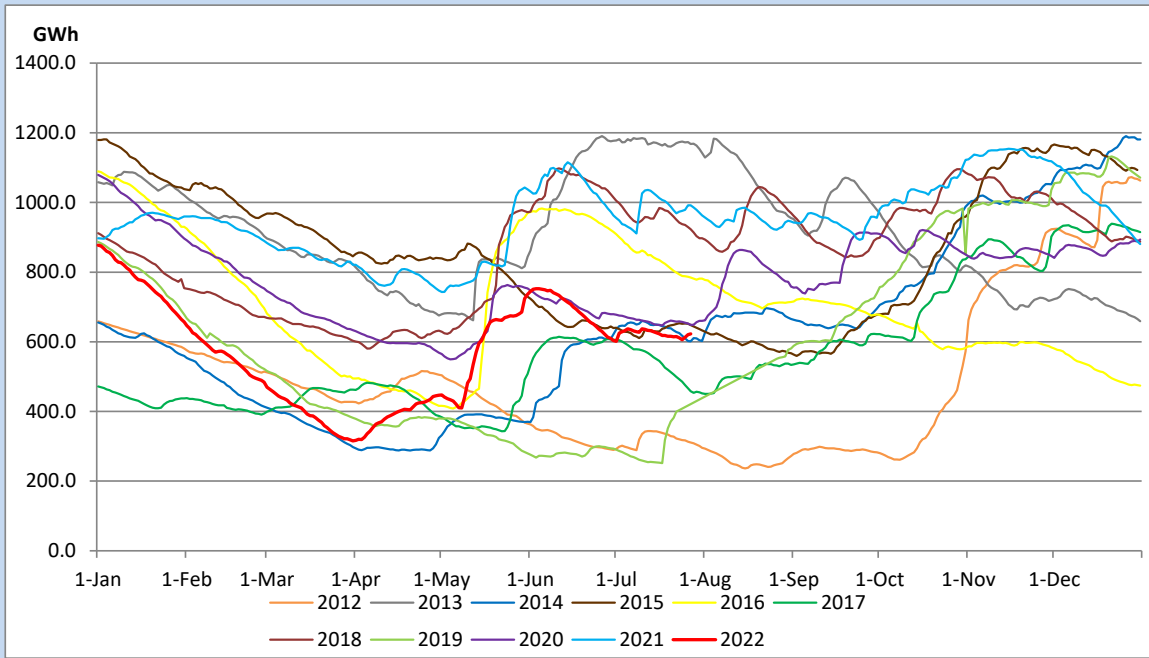
Above figures are excluding contribution from Roof Top Solar, 1MW solar, certain Wind plants and Mini Hydro plants

## Reservoir Levels - as at 06.00 Hr on July 29, 2022

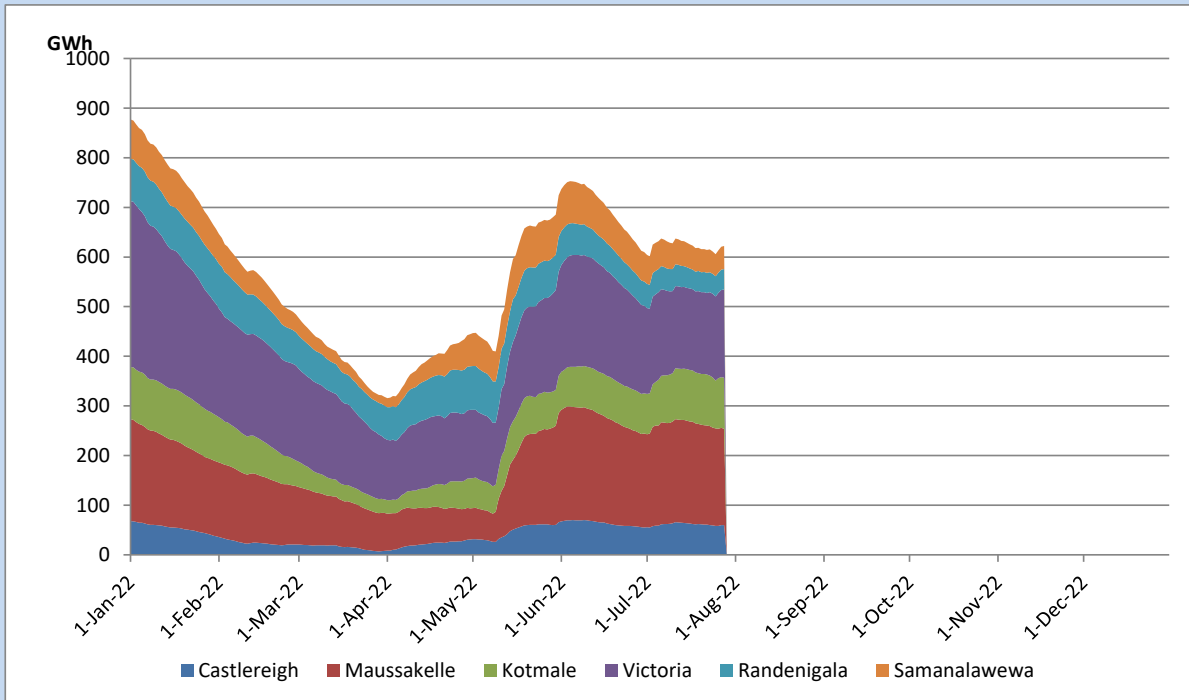


Total Reservoir Level	622.4 GWh
% of Total capacity	51.7%

## Comparison of Total Reservoir Storage Levels with Past Years

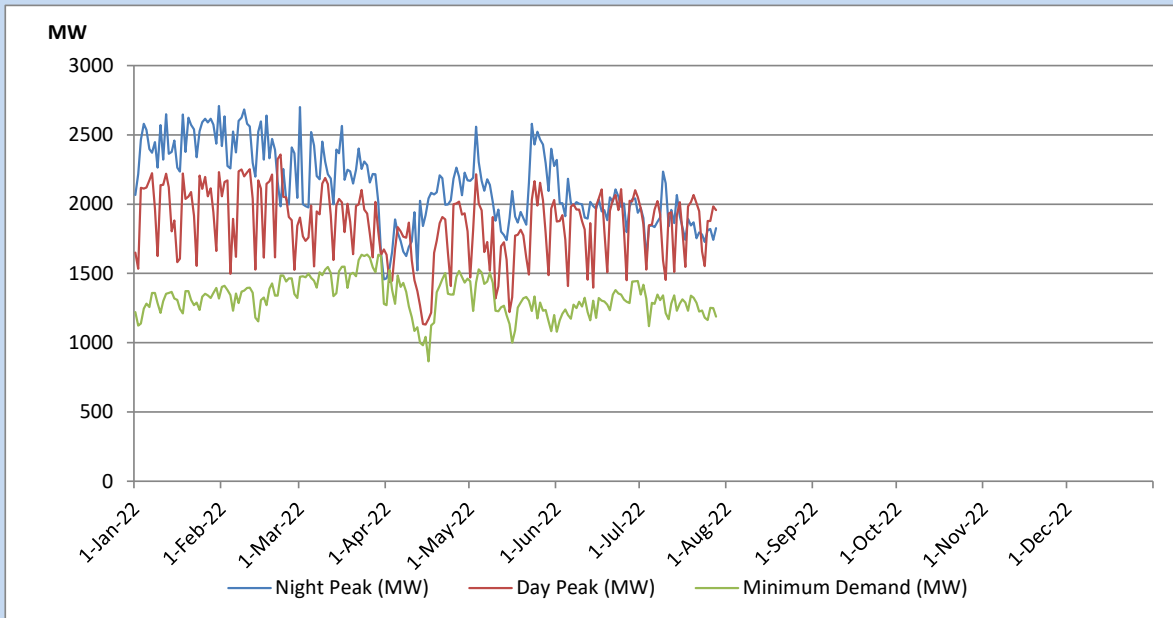


## Variation of Major Hydro Reservoir Levels in the current year (GWh)





## Variation of Demand during the current year

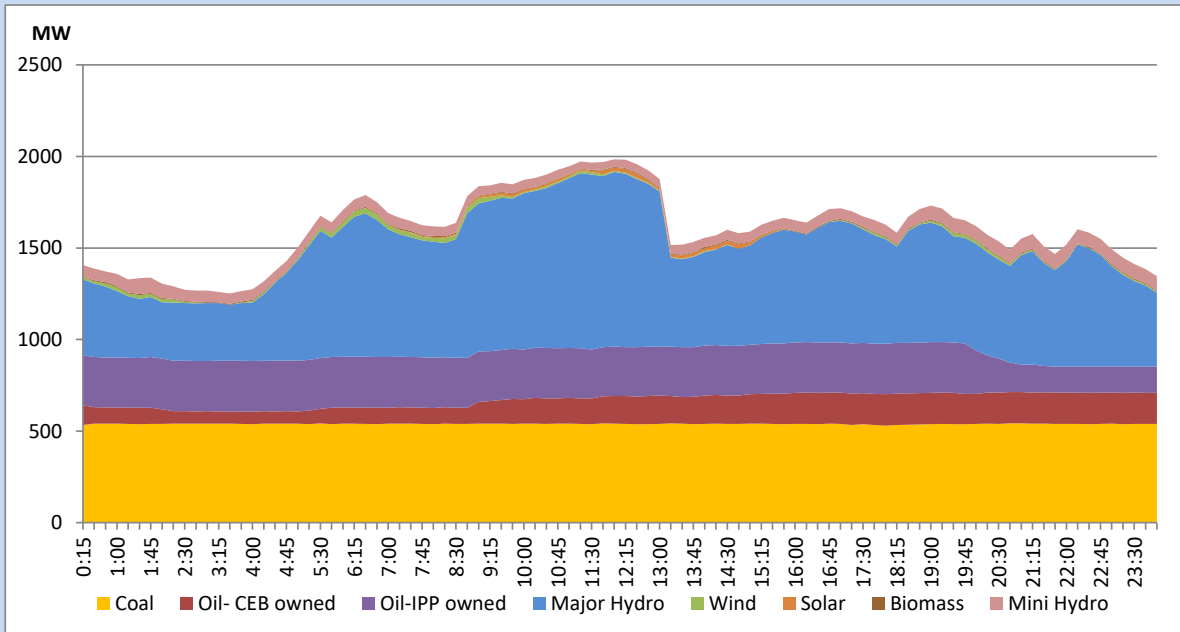


The above figures are excluding contribution from Roof Top Solar, 1MW solar, certain Wind plants and Mini Hydro plants

## Daily Load Curve of the Previous day

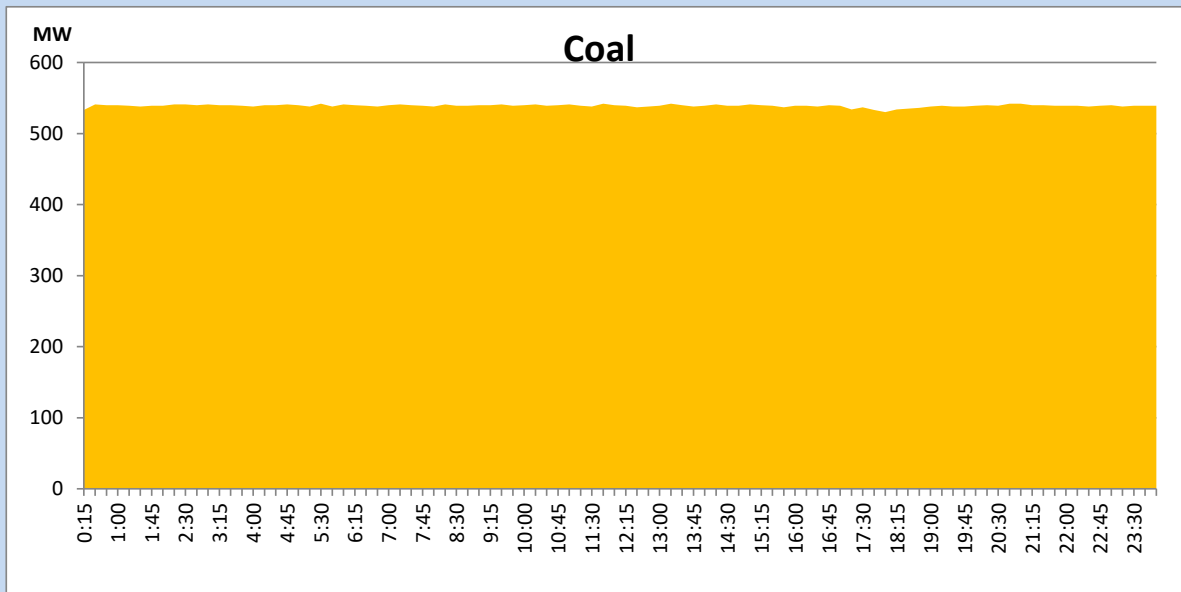
July 27, 2022

Solar and wind data is based on Telemetered Power Stations only



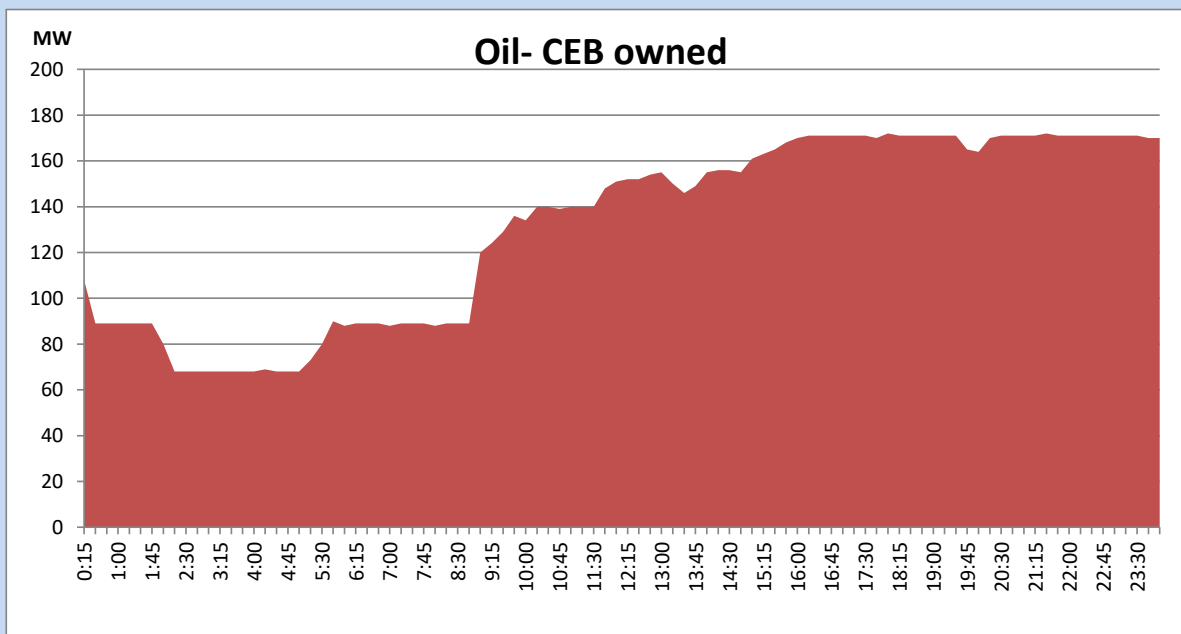
## Coal Generation during the Previous day

July 27, 2022



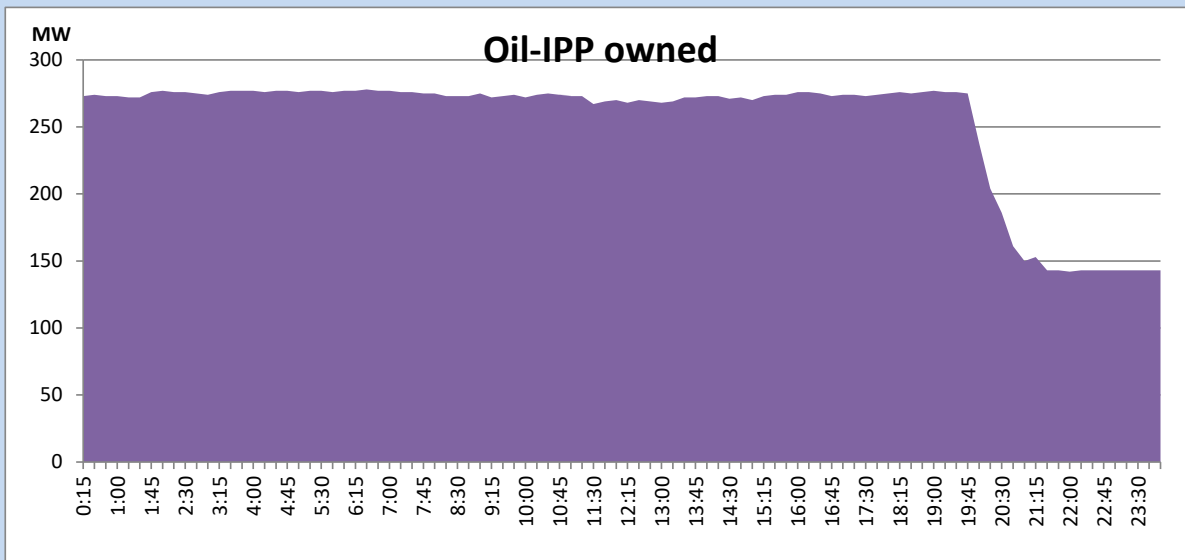
## CEB Oil Plant Generation during the Previous day

July 27, 2022



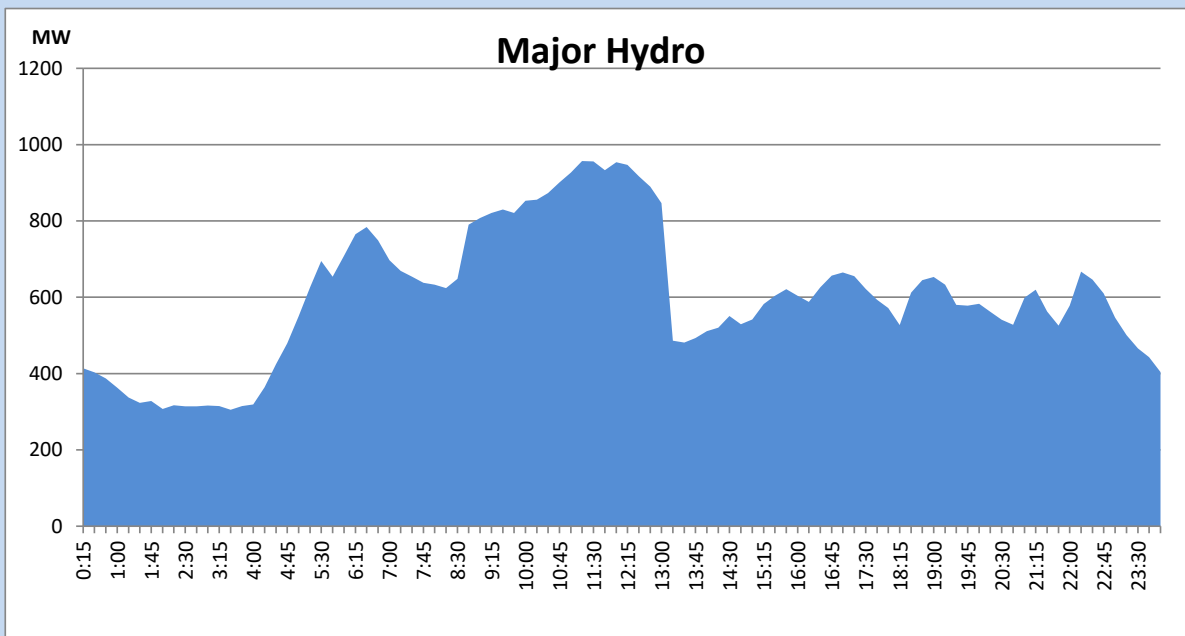
## IPP Oil Plant Generation during the Previous day

July 27, 2022



## Major Hydro Generation during the Previous day

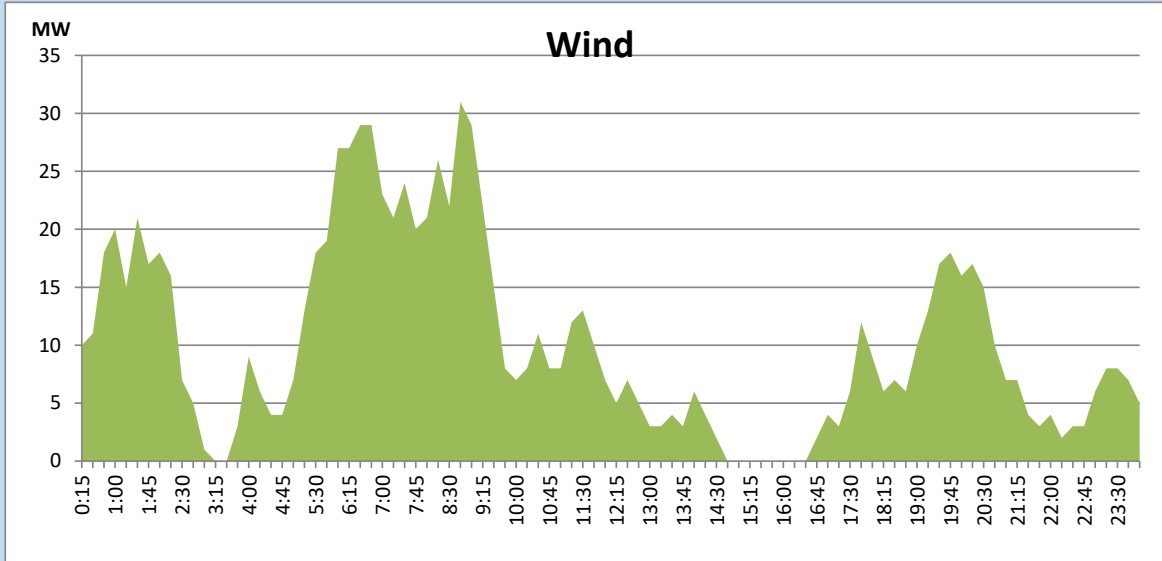
July 27, 2022



## Wind Generation during the Previous day

July 27, 2022

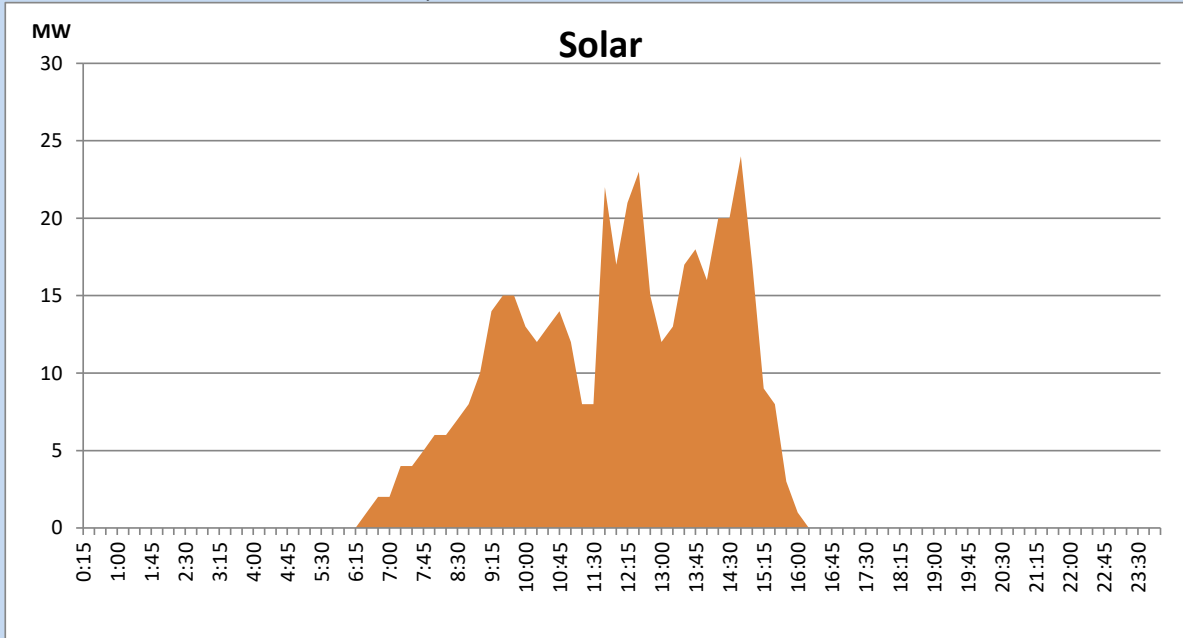
Based on Telemetered Power Stations only



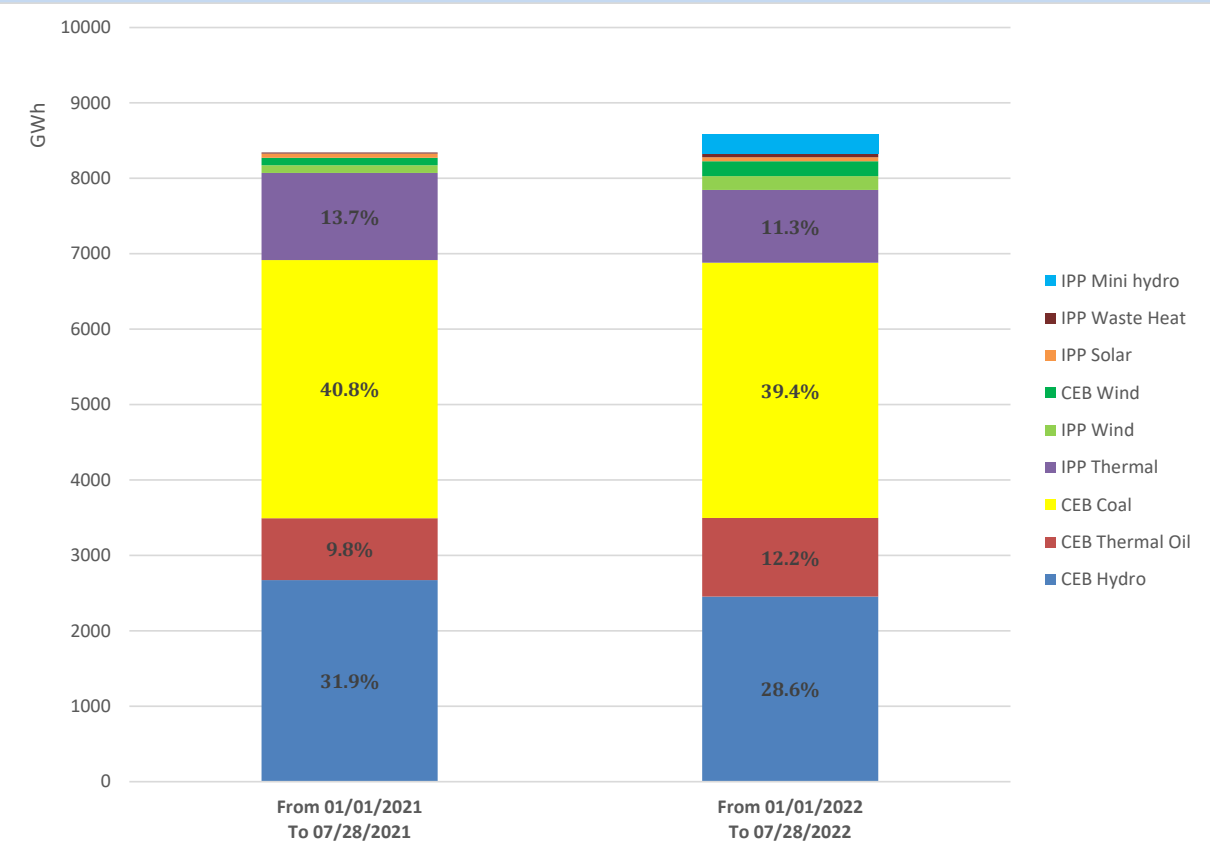
## Solar Generation during the Previous day

July 27, 2022

Based on Telemetered Power Stations only



# Cumulative Dispatch Comparison with Last Year



## Thermal Plant Fuel types

Power Station	Primary Fuel
CEB Thermal	
Sapugaskanda 1	Heavy Fuel
Sapugaskanda 2	Heavy Fuel
Kelanitissa Small Gas Turbines	Auto Diesel
GT 7 - Kelanitissa	Auto Diesel
Kelanitissa CCY	Naphtha or Diesel
Lakvijaya 1	Coal
Lakvijaya 2	Coal
Lakvijaya 3	Coal
Uthuru Janani	Heavy Fuel
Barge CEB	Heavy Fuel

Power Station	Primary Fuel
Private Thermal	
Sojitz - Kelanitissa	Auto Diesel
West Coast	Auto Diesel / Heavy Fuel
ACE Matara	Heavy Fuel
ACE Embilipitiya	Heavy Fuel

## Major Incidents during the day -as reported by CEB morning of

July 29, 2022

- 1) Rotational manual load shedding was carried out from 05:30 hrs to 08:30 hrs and 13:00 hrs to 22:00 hrs.
- 2) Kukule spilling stopped at 13:37 hrs.