

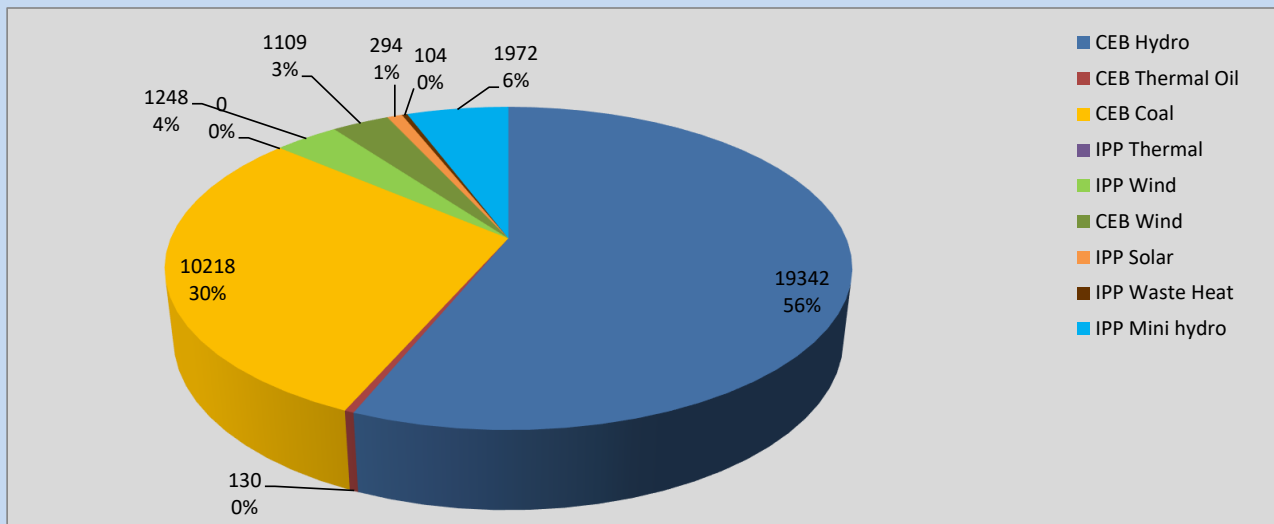
Generation and Reservoirs Statistics

August 27, 2022



PUBLIC UTILITIES COMMISSION OF SRI LANKA

Daily Generation Mix in MWh



Total Generation **34,417 MWh**

Note: Above data is excluding contribution from Roof Top Solar, 1MW Solar and certain Mini Hydro plants

Cumulative Dispatch

Note: Following data is Excluding contribution from Roof Top Solar, 1MW solar and Mini Hydro plants

For Current Month

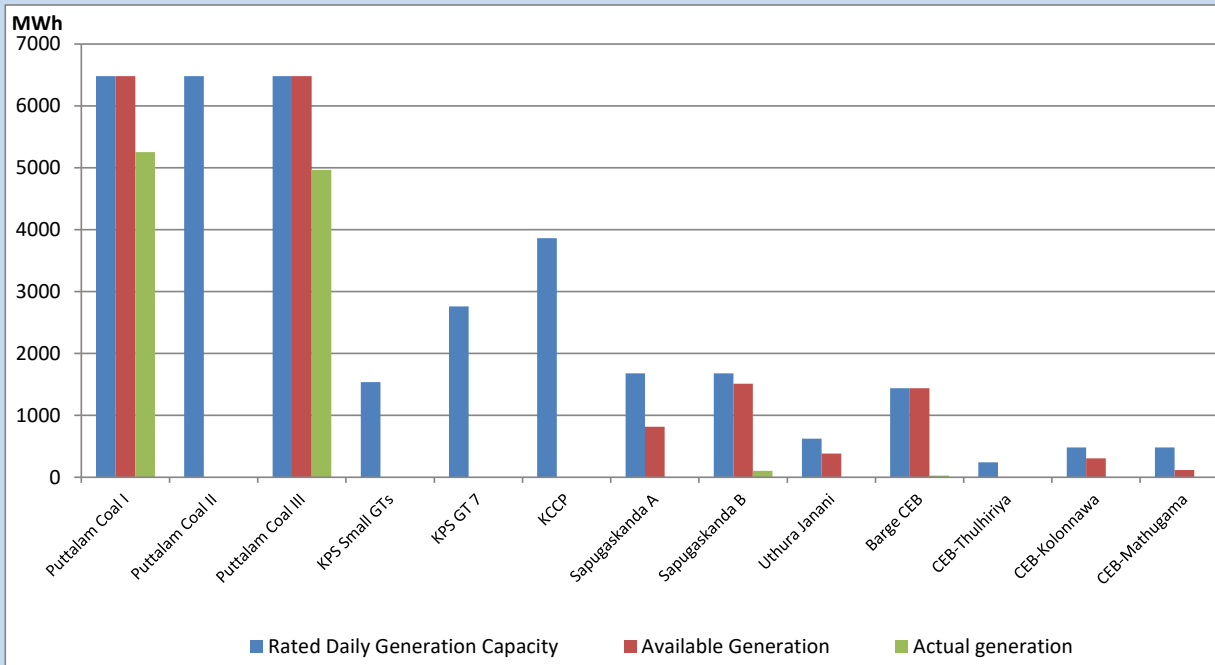
Category	Dispatch (GWh)	Percentage
CEB Hydro	555.01	53.08%
CEB Thermal Oil	51.41	4.92%
CEB Coal	244.98	23.43%
IPP Thermal	53.32	5.10%
SPP Wind	44.47	4.25%
CEB Wind	42.05	4.02%
SPP Solar	7.42	0.71%
SPP Solid Waste	4.25	0.41%
Mini Hydro	42.77	4.09%
Total	1,045.68	

For Current Year

Category	Dispatch (GWh)	Percentage
CEB Hydro	3,053.2	31.36%
CEB Thermal Oil	1,106.8	11.37%
CEB Coal	3,664.6	37.64%
IPP Thermal	1,025.8	10.54%
SPP Wind	228.4	2.35%
CEB Wind	243.3	2.50%
SPP Solar	61.4	0.63%
SPP Solid Waste	48.3	0.50%
Mini Hydro	303.8	3.12%
Total	9,735.3	

CEB owned Thermal Plant Dispatch

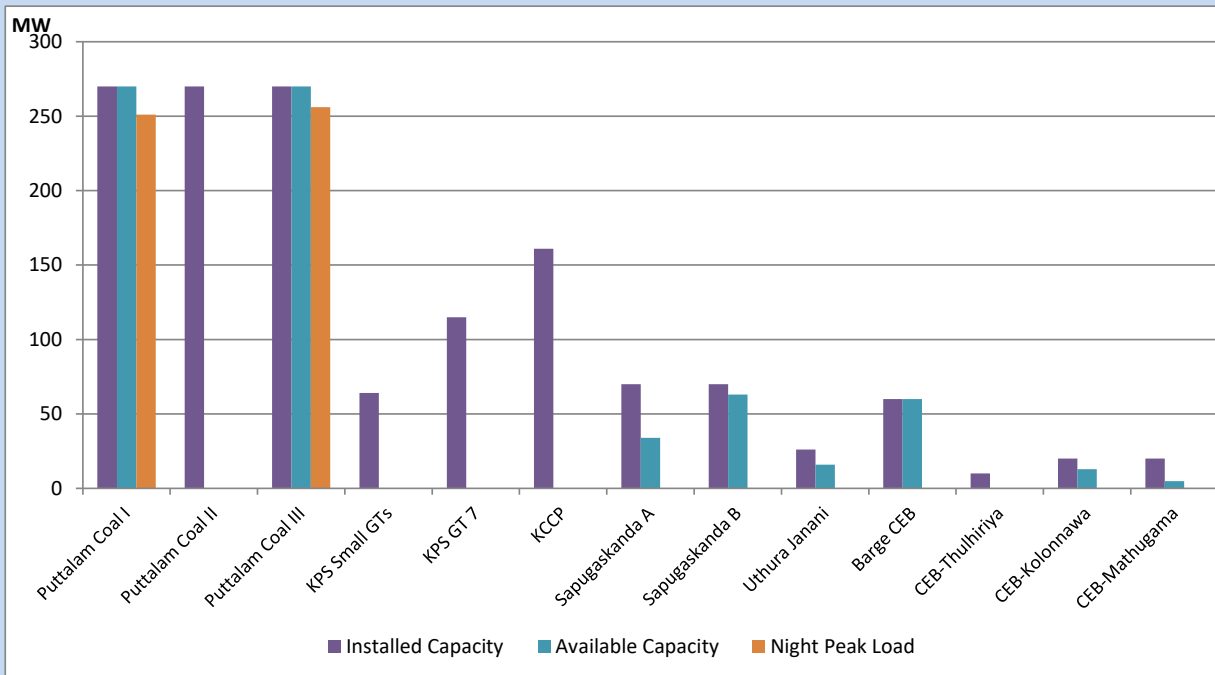
August 27, 2022



Available Generation is estimated based on plant availability at 6.00am on

August 28, 2022

CEB owned Thermal Plant Loading at the Night Peak



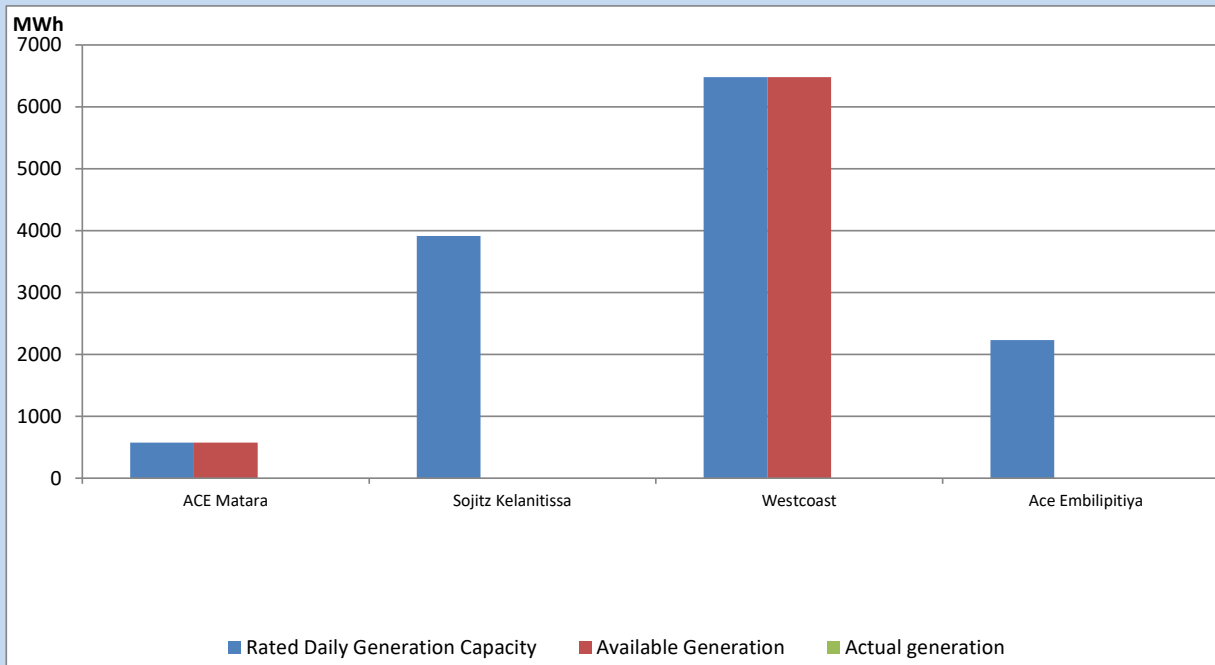
Note- Plant availability is recorded at 6.00 am on

August 28, 2022

IPP owned Thermal Plant Dispatch

August 27, 2022

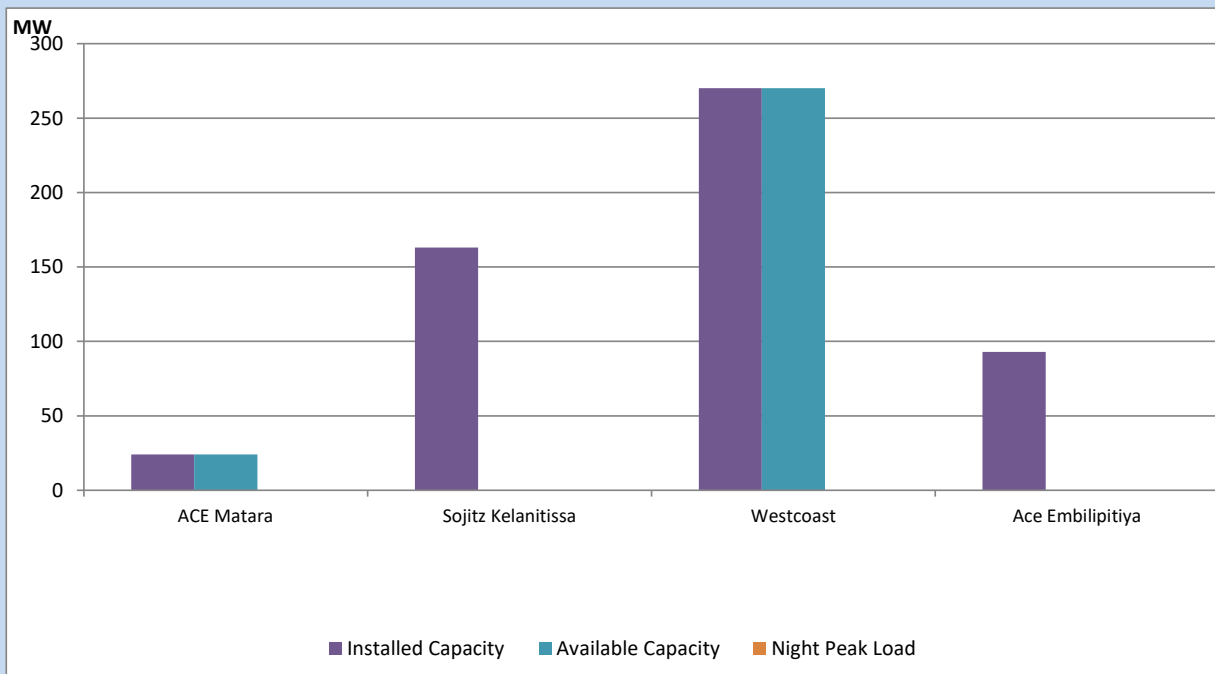
Asia Power, V Power Pallekale, Vpower Galle, V Power Horana, Vpower Hambantota, Vpower Valachchena and Altaqa Mahiyanganaya are not available due to expiration of PPAs



Available Generation is estimated based on plant availability at 6.00am on

August 28, 2022

IPP owned Thermal Plant Loading at the Night Peak

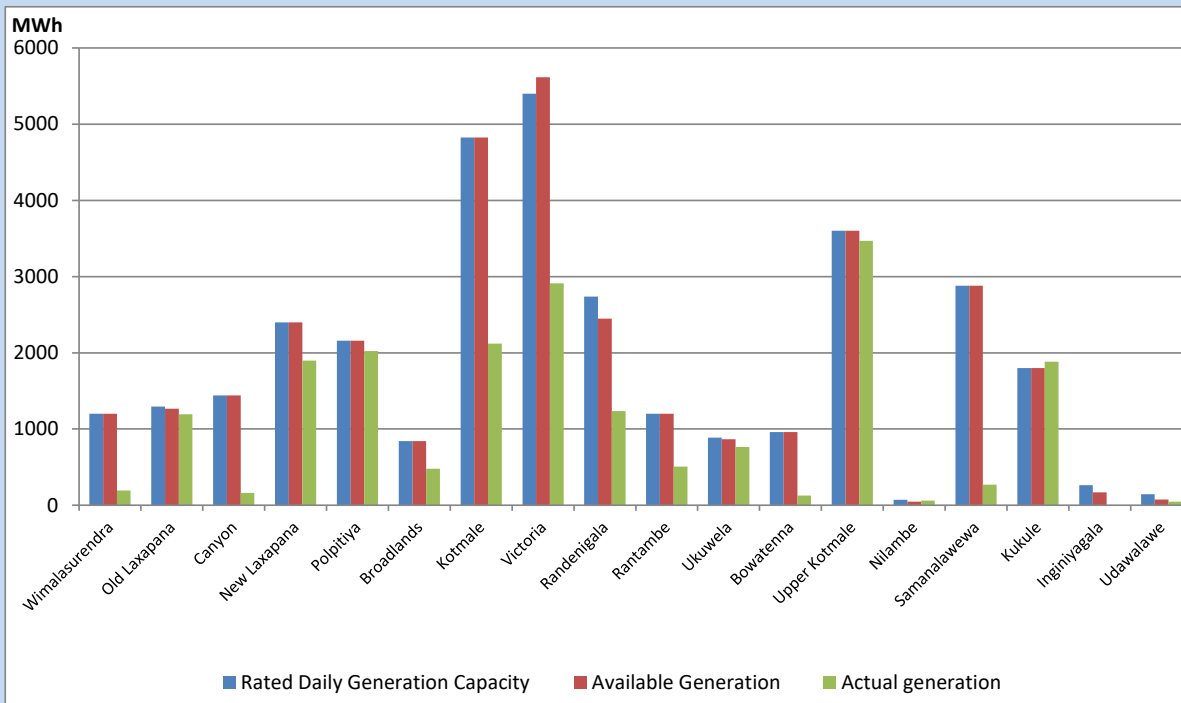


Note- Plant availability is recorded at 6.00 am on

August 28, 2022

Major Hydro Plant Dispatch

August 27, 2022

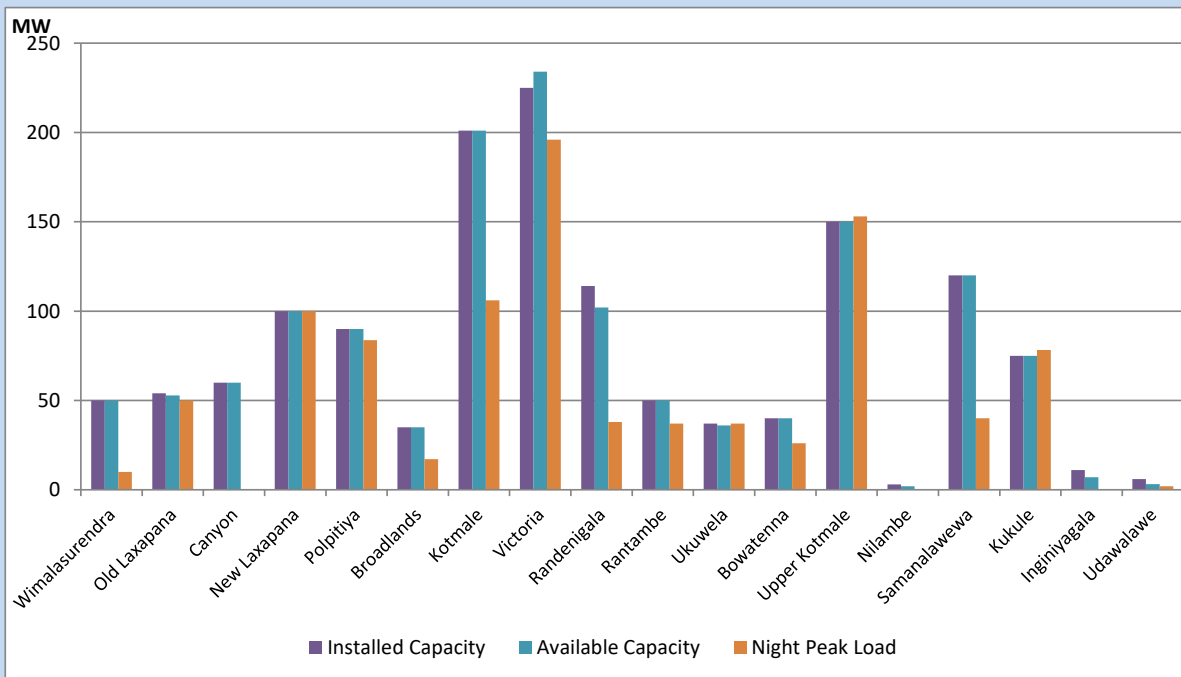


Available Generation is estimated based on plant availability at 6.00am on August 28, 2022
 Broadlands power plant is operating in the Commissioning Stage

August 28, 2022

Major Hydro Plant Loading at Night Peak

August 27, 2022



Note- Plant availability is recorded at 6.00 am on August 28, 2022
 Broadlands power plant is operating in the Commissioning Stage

Summary of Major Plant performance

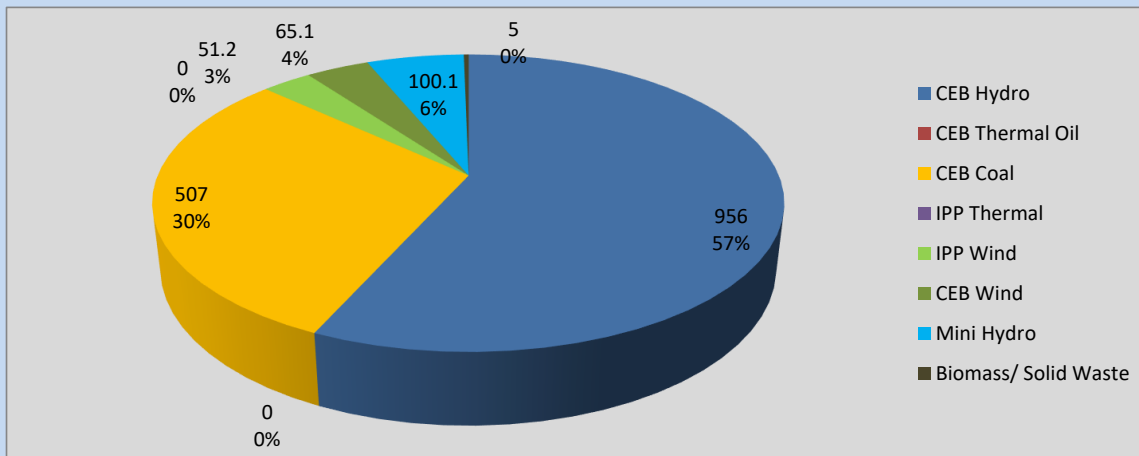
Plant	Installed Capacity	Plant Availability	Night peak Load	Plant Dispatch
	(MW)	(MW)	(MW)	(MWh)
Wimalasurendra	50	50	10	193
Old Laxapana	54	53	50	1,192
Canyon	60	60	0	163
New Laxapana	100	100	100	1,898
Polpitiya	90	90	84	2,024
Broadlands	35	35	17	479
Kotmale	201	201	106	2,120
Victoria	225	234	196	2,913
Randenigala	114	102	38	1,235
Rantambe	50	50	37	508
Ukuwela	37	36	37	763
Bowatenna	40	40	26	128
Upper Kotmale	150	150	153	3,468
Nilambe	3	2	0	60
Samanalawewa	120	120	40	269
Kukule	75	75	78	1,884
Inginiyagala	11	7	0	0
Udawalawe	6	3	2	45
Puttalam Coal I	270	270	251	5,252
Puttalam Coal II	270	0	0	0
Puttalam Coal III	270	270	256	4,966
KPS Small GTs	64	0	0	0
KPS GT 7	115	0	0	0
KCCP	161	0	0	0
Sapugaskanda A	70	34	0	0
Sapugaskanda B	70	63	0	103
Uthura Janani	26	16	0	0
Barge CEB	60	60	0	27
CEB-Thulhiriya	10	0	0	0
CEB-Kolonnawa	20	13	0	0
CEB-Mathugama	20	5	0	0
ACE Matara	24	24	0	0
Sojitz Kelanitissa	163	0	0	0
West Coast	270	270	0	0
ACE Embilipitiya	93	0	0	0
Total	3,397	2,433	1,703	34,417

Plant availability is the availability recorded at 6 am on

August 28, 2022

Contribution to the Night Peak in MW

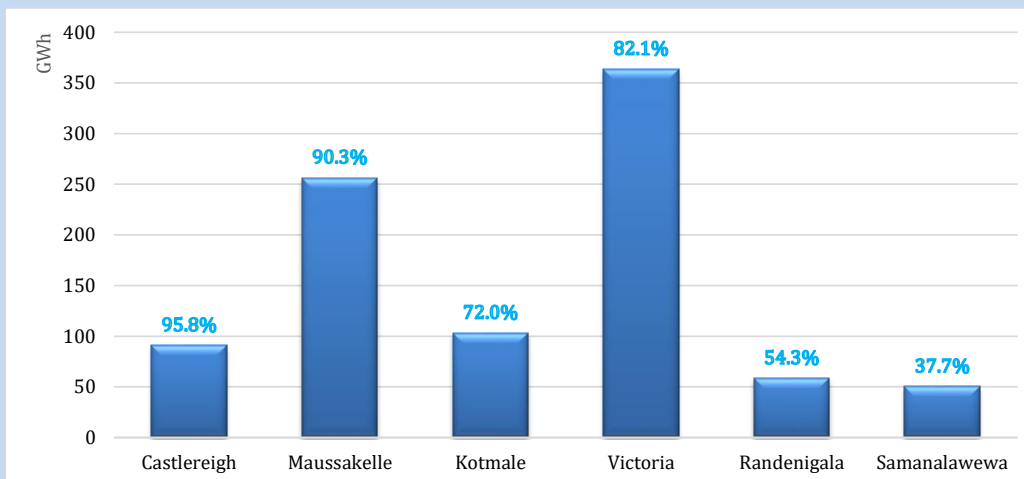
August 27, 2022



Night Peak*	1,684.5 MW
Day Peak	1,657.7 MW
Minimum Demand	1,154.4 MW

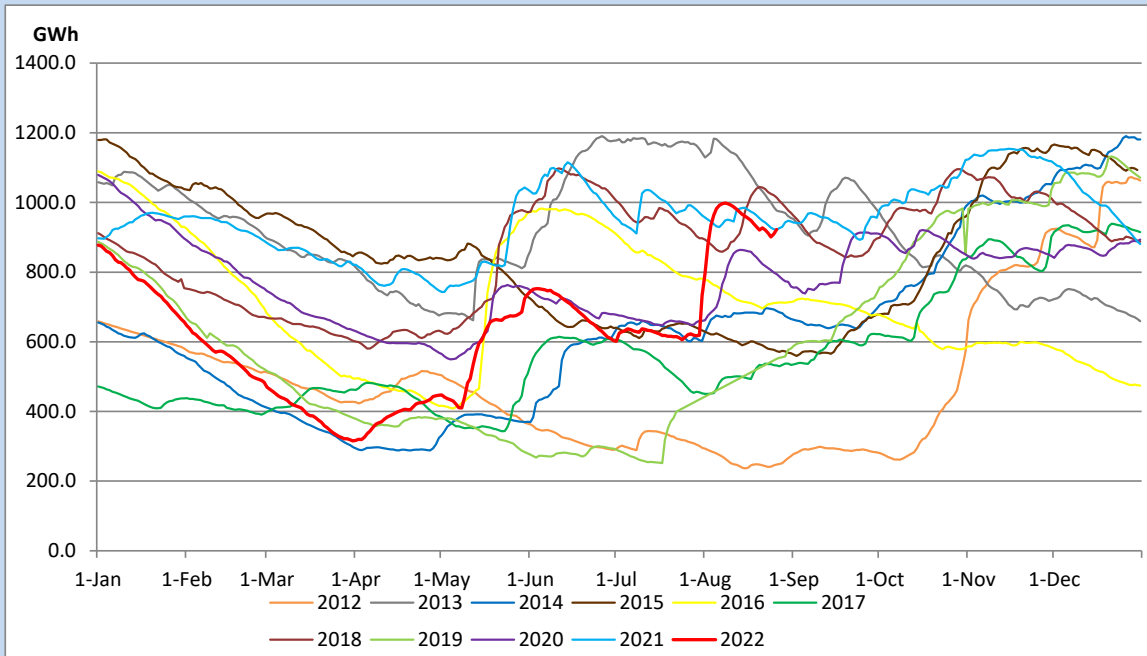
Above figures are excluding contribution from Roof Top Solar, 1MW solar, certain Wind plants and Mini Hydro plants

Reservoir Levels - as at 06.00 Hr on August 28, 2022

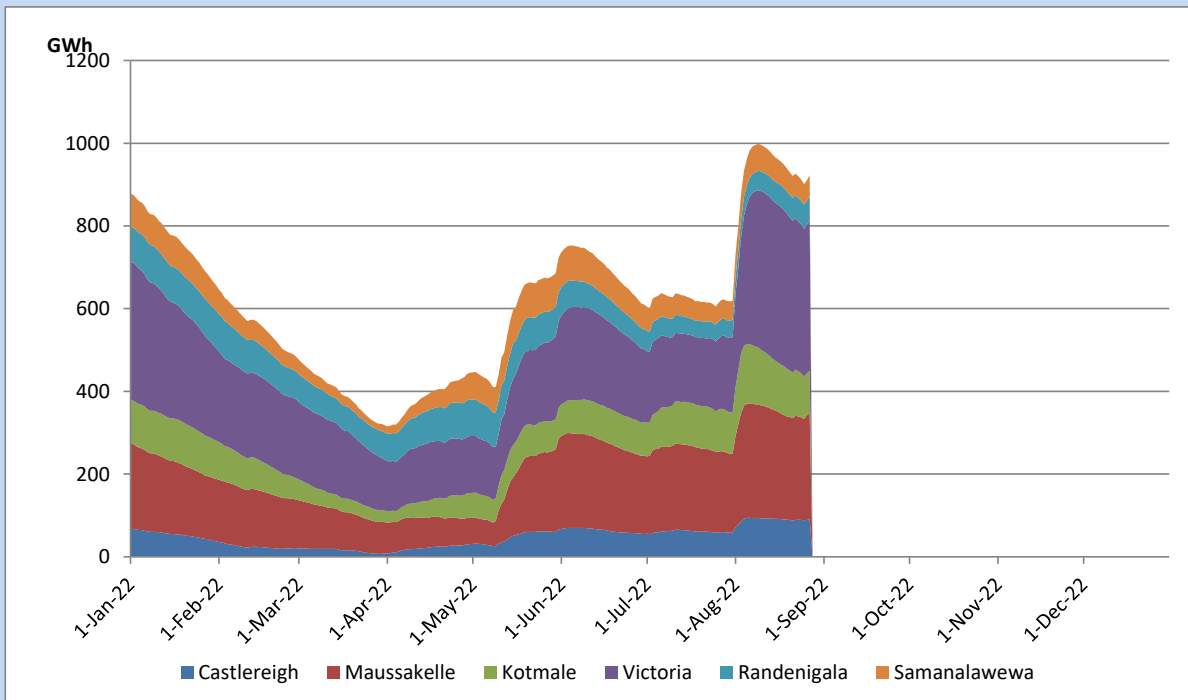


Total Reservoir Level	922.5 GWh
% of Total capacity	76.5%

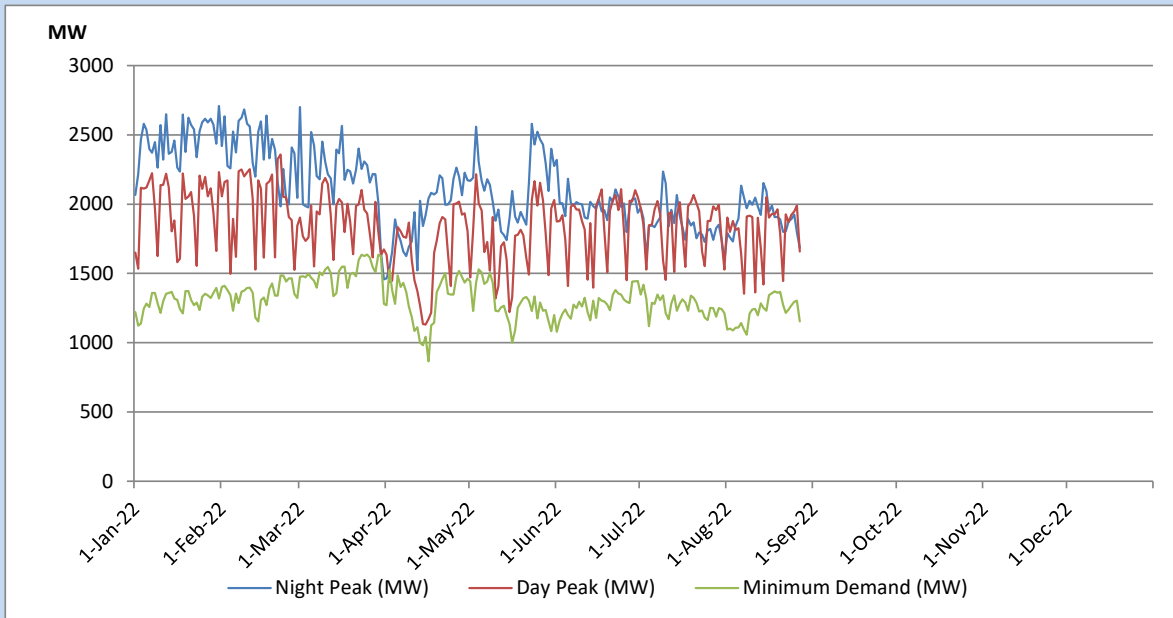
Comparison of Total Reservoir Storage Levels with Past Years



Variation of Major Hydro Reservoir Levels in the current year (GWh)



Variation of Demand during the current year

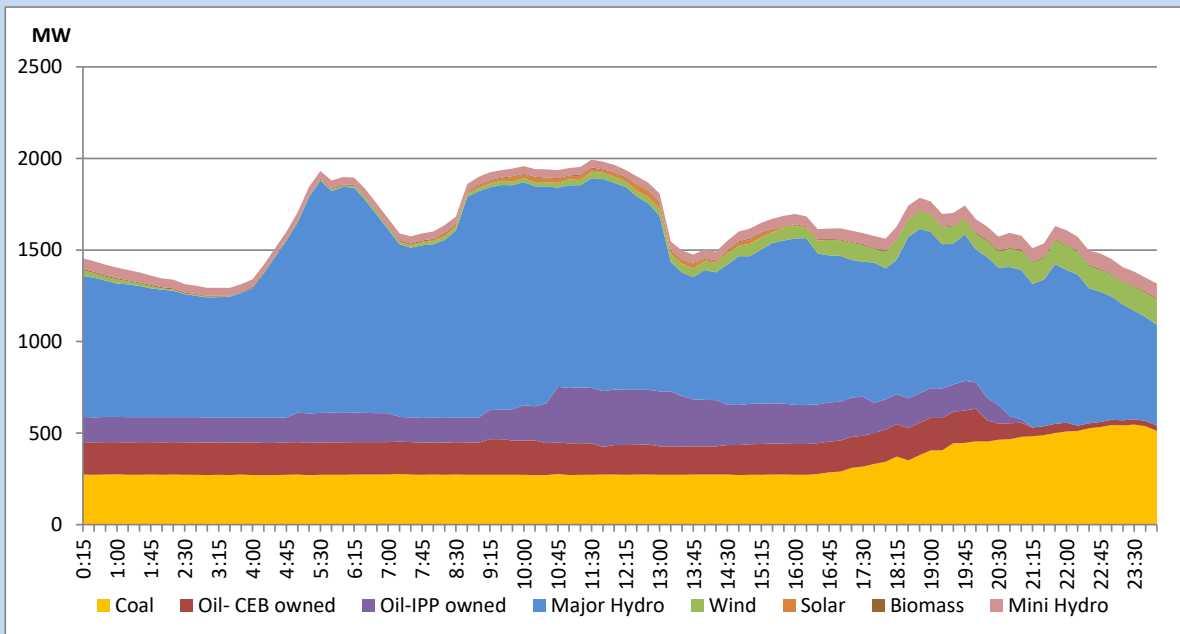


The above figures are excluding contribution from Roof Top Solar, 1MW solar, certain Wind plants and Mini Hydro plants

Daily Load Curve of the Previous day

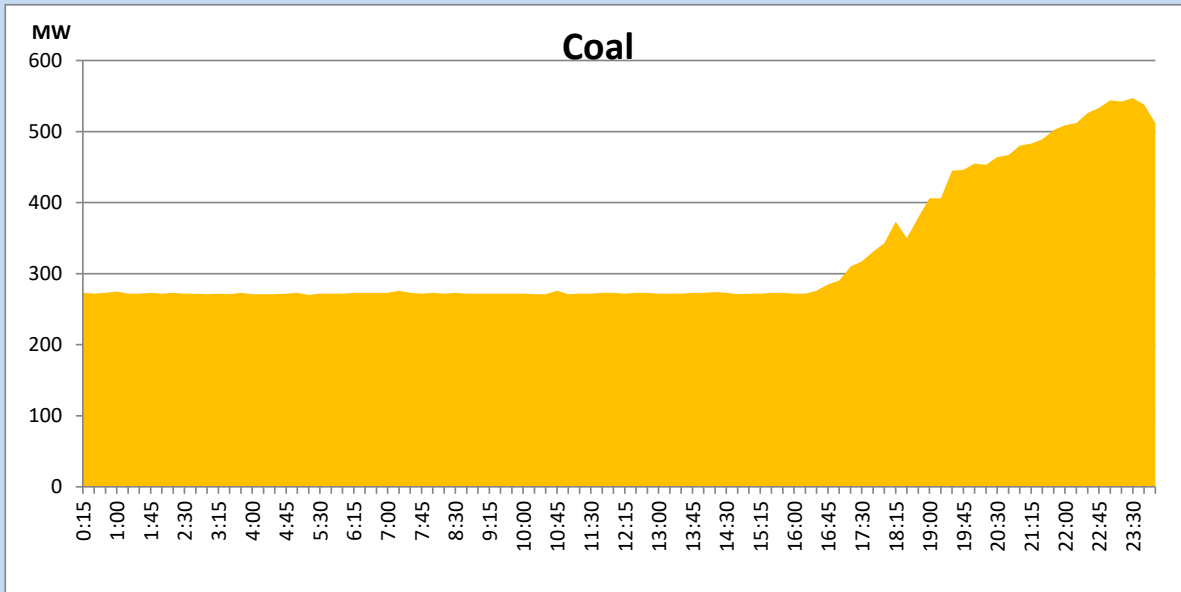
August 26, 2022

Solar and wind data is based on Telemetered Power Stations only



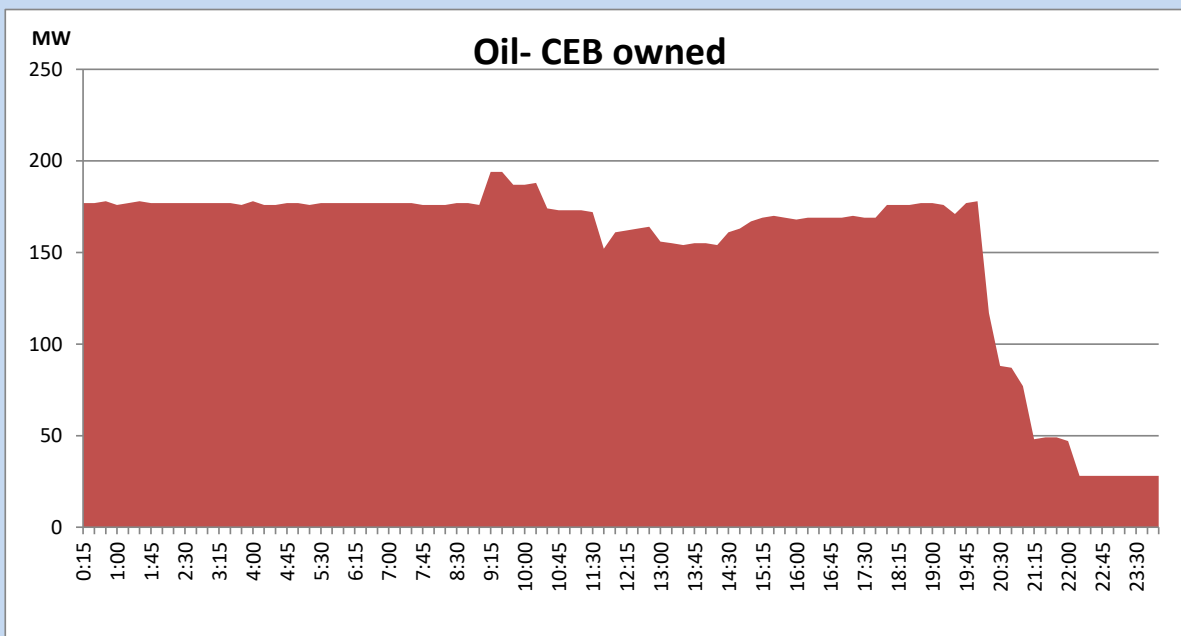
Coal Generation during the Previous day

August 26, 2022



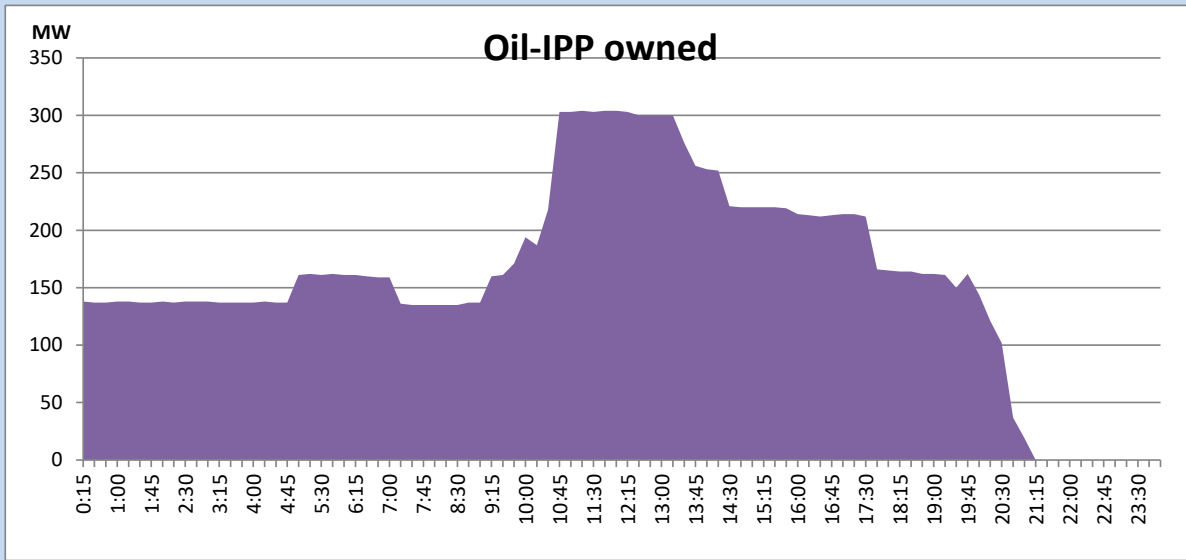
CEB Oil Plant Generation during the Previous day

August 26, 2022



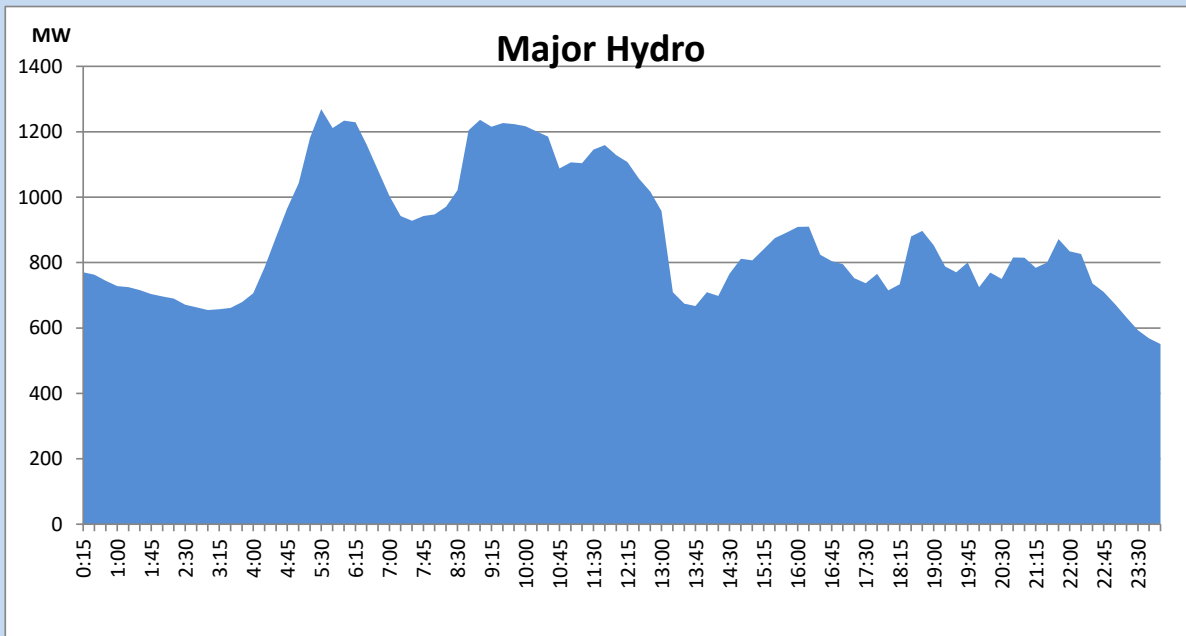
IPP Oil Plant Generation during the Previous day

August 26, 2022



Major Hydro Generation during the Previous day

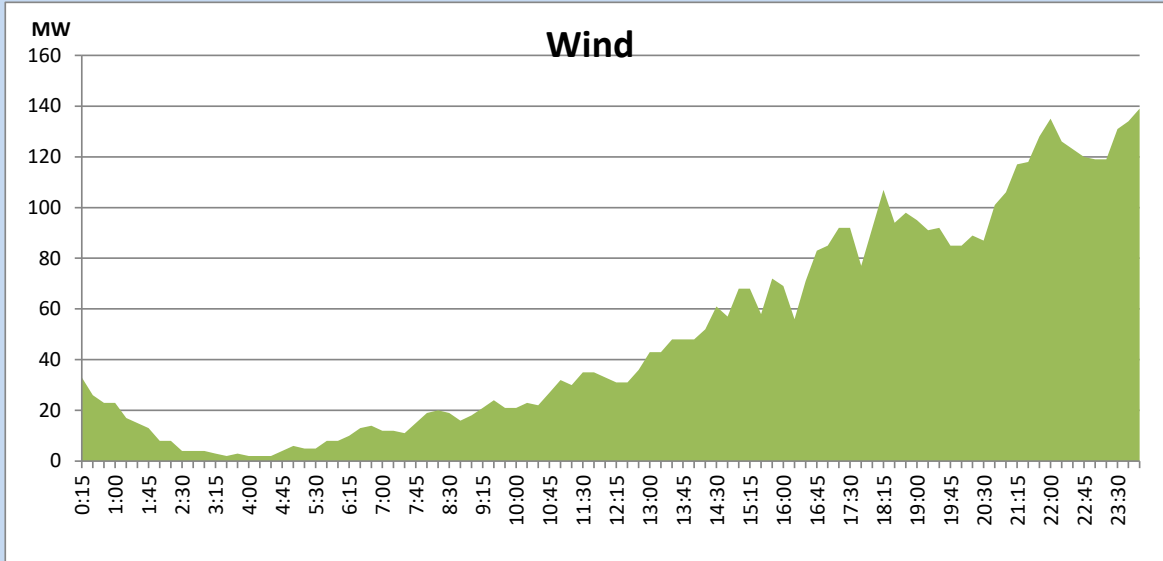
August 26, 2022



Wind Generation during the Previous day

August 26, 2022

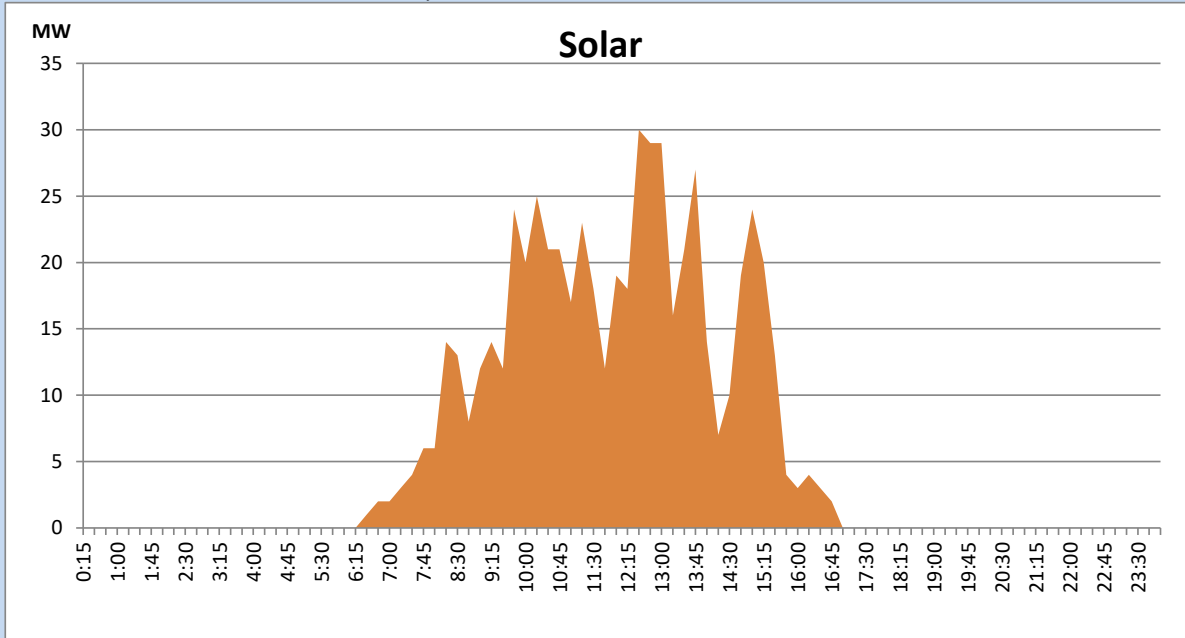
Based on Telemetered Power Stations only



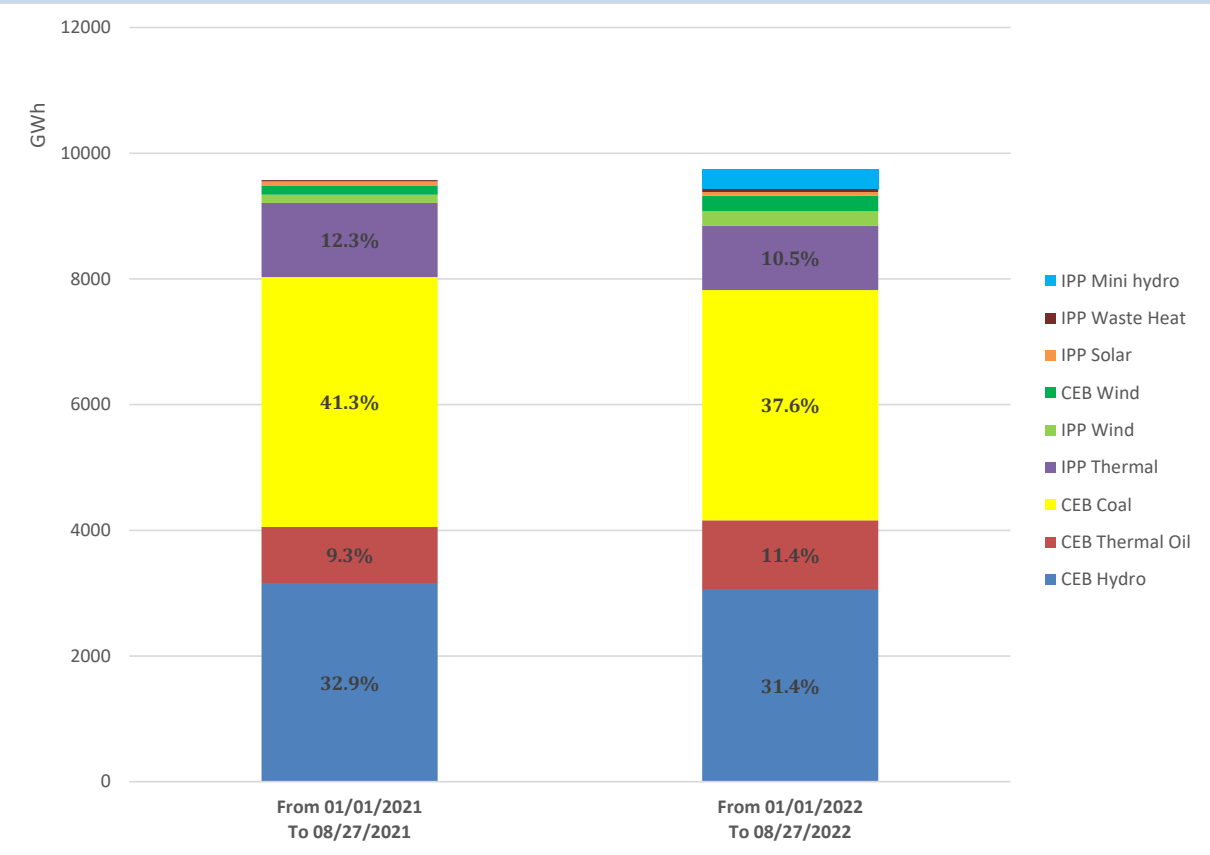
Solar Generation during the Previous day

August 26, 2022

Based on Telemetered Power Stations only



Cumulative Dispatch Comparison with Last Year



Thermal Plant Fuel types

Power Station	Primary Fuel
CEB Thermal	
Sapugaskanda 1	Heavy Fuel
Sapugaskanda 2	Heavy Fuel
Kelanitissa Small Gas Turbines	Auto Diesel
GT 7 - Kelanitissa	Auto Diesel
Kelanitissa CCY	Naphtha or Diesel
Lakvijaya 1	Coal
Lakvijaya 2	Coal
Lakvijaya 3	Coal
Uthuru Janani	Heavy Fuel
Barge CEB	Heavy Fuel

Power Station	Primary Fuel
Private Thermal	
Sojitz - Kelanitissa	Auto Diesel
West Coast	Auto Diesel / Heavy Fuel
ACE Matara	Heavy Fuel
ACE Embilipitiya	Heavy Fuel

Major Incidents during the day -as reported by CEB morning of

August 28, 2022

- 1) Rotational manual load shedding was carried out from 10:30 hrs to 12:10 hrs and 14:40 hrs to 22:00 hrs.
- 2) Norton pond and Laxapana pond spilling stopped at 06:43hrs and 11:35hrs respectively.
- 3) Kerawalapitiya - Kotugoda cct 01 tripped from Kotugoda end and tripped and A/R from Kerawalapitiya end at 16:48hrs due to the operation of distance protection. The cct was restored at 16:58 hrs.
- 4) Kukule spilling stopped at 18:08hrs.