

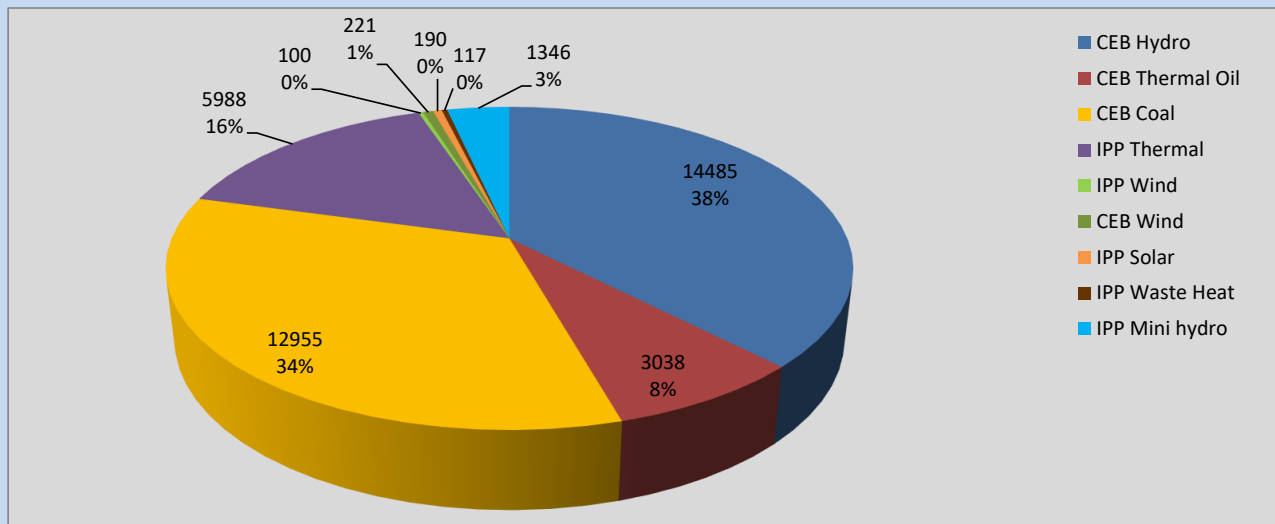
Generation and Reservoirs Statistics

July 27, 2022



PUBLIC UTILITIES COMMISSION OF SRI LANKA

Daily Generation Mix in MWh



Total Generation

38,440 MWh

Note: Above data is excluding contribution from Roof Top Solar, 1MW Solar and certain Mini Hydro plants

Cumulative Dispatch

Note: Following data is Excluding contribution from Roof Top Solar, 1MW solar and Mini Hydro plants

For Current Month

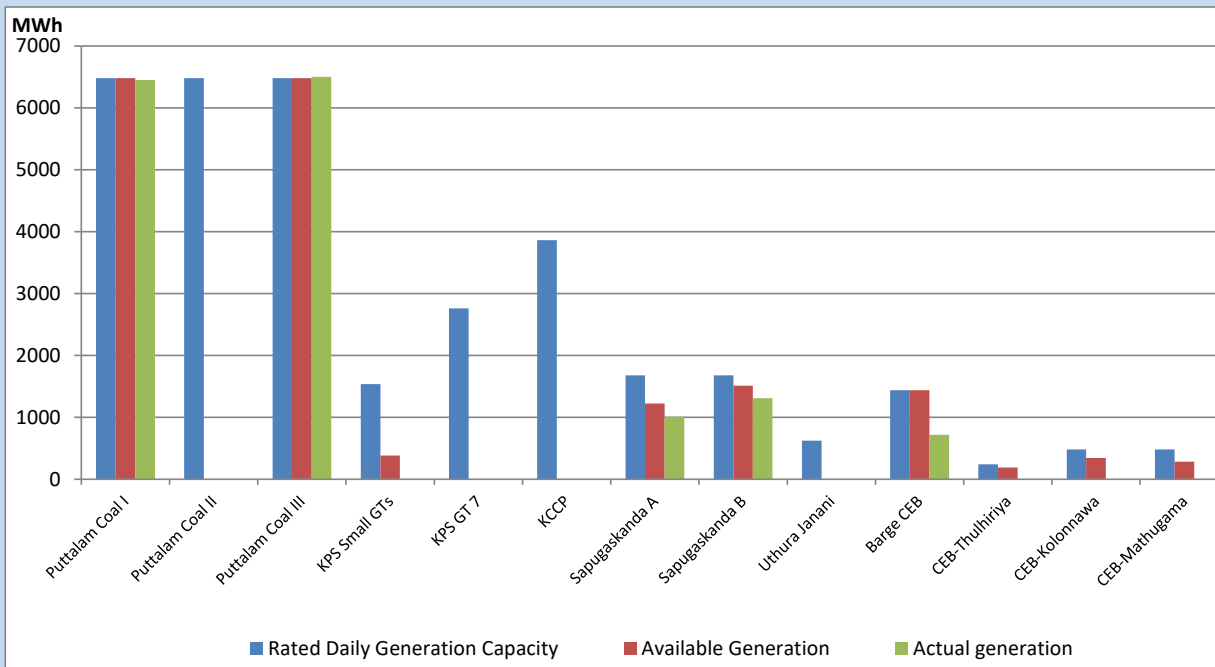
Category	Dispatch (GWh)	Percentage
CEB Hydro	385.14	37.16%
CEB Thermal Oil	100.60	9.71%
CEB Coal	340.43	32.85%
IPP Thermal	92.23	8.90%
SPP Wind	32.31	3.12%
CEB Wind	33.31	3.21%
SPP Solar	6.85	0.66%
SPP Solid Waste	5.33	0.51%
Mini Hydro	40.15	3.87%
Total	1,036.35	

For Current Year

Category	Dispatch (GWh)	Percentage
CEB Hydro	2,436.5	28.52%
CEB Thermal Oil	1,040.7	12.18%
CEB Coal	3,368.7	39.43%
IPP Thermal	963.8	11.28%
SPP Wind	182.2	2.13%
CEB Wind	199.2	2.33%
SPP Solar	53.3	0.62%
SPP Solid Waste	43.8	0.51%
Mini Hydro	255.8	2.99%
Total	8,543.7	

CEB owned Thermal Plant Dispatch

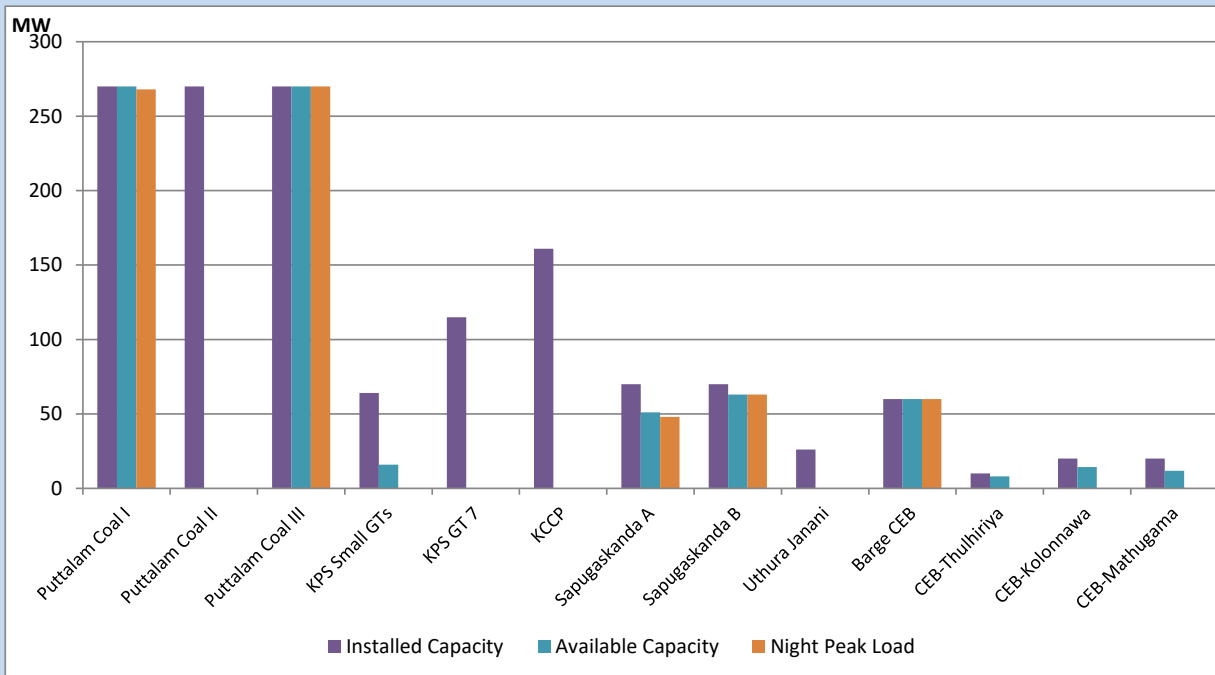
July 27, 2022



Available Generation is estimated based on plant availability at 6.00am on

July 28, 2022

CEB owned Thermal Plant Loading at the Night Peak



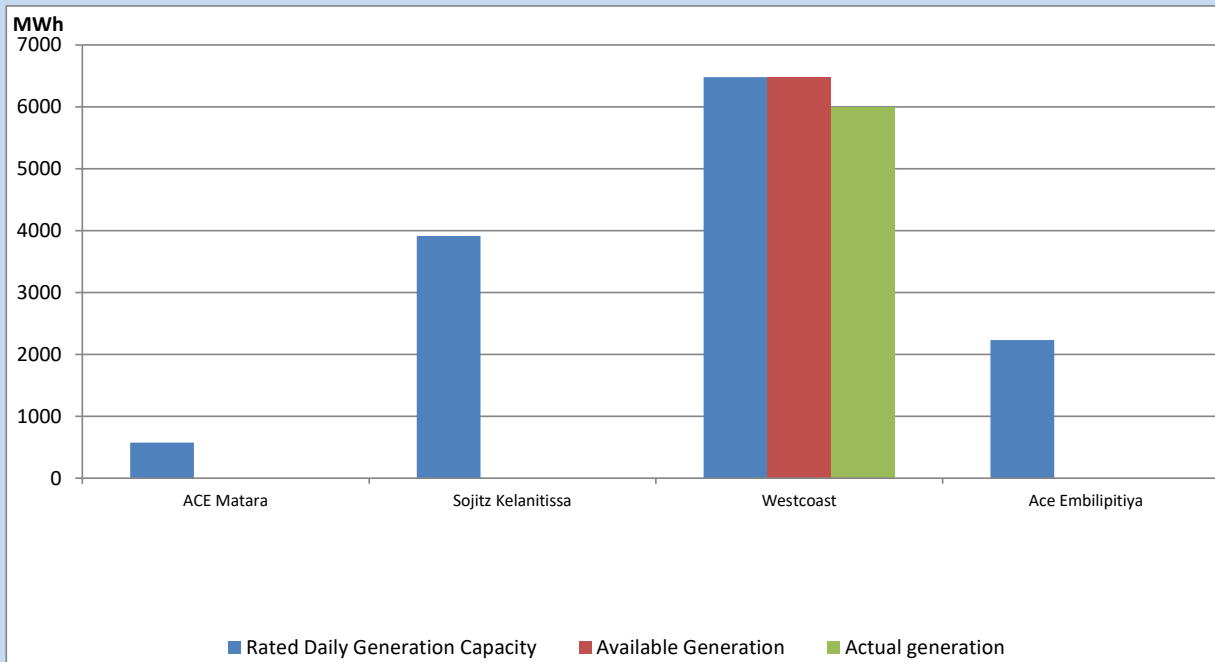
Note- Plant availability is recorded at 6.00 am on

July 28, 2022

IPP owned Thermal Plant Dispatch

July 27, 2022

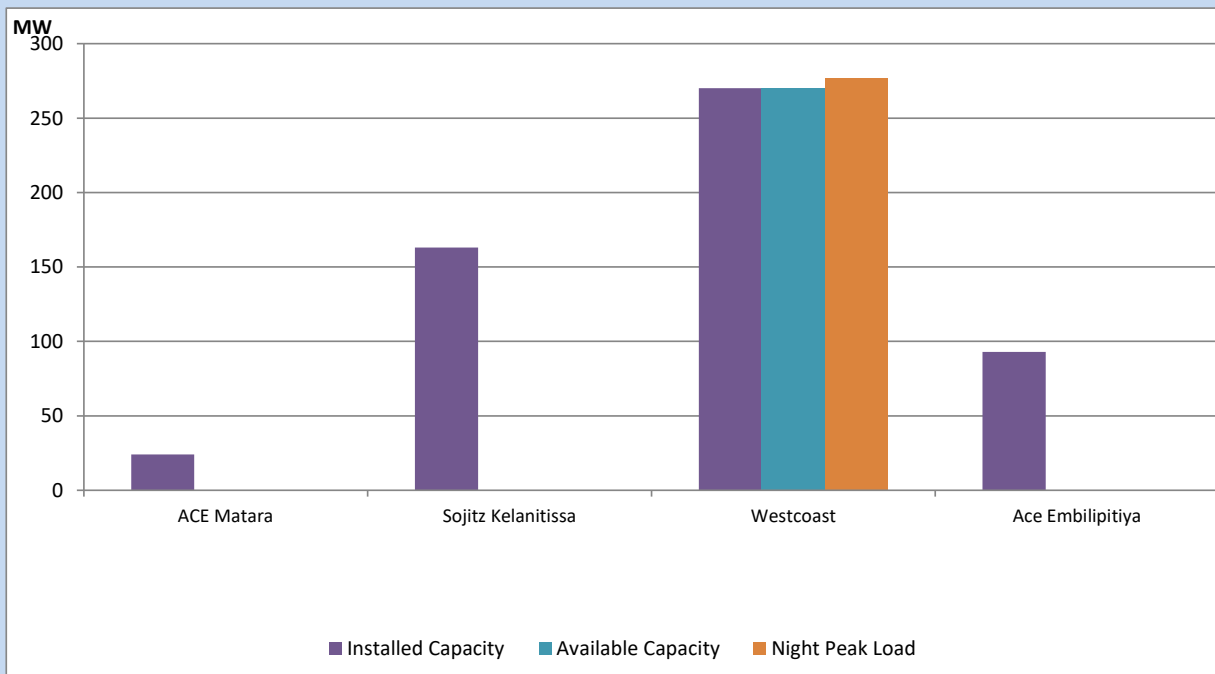
Asia Power, V Power Pallekale, Vpower Galle, V Power Horana, Vpower Hambantota, Vpower Valachchena and Altaqa Mahiyanganaya are not available due to expiration of PPAs



Available Generation is estimated based on plant availability at 6.00am on

July 28, 2022

IPP owned Thermal Plant Loading at the Night Peak

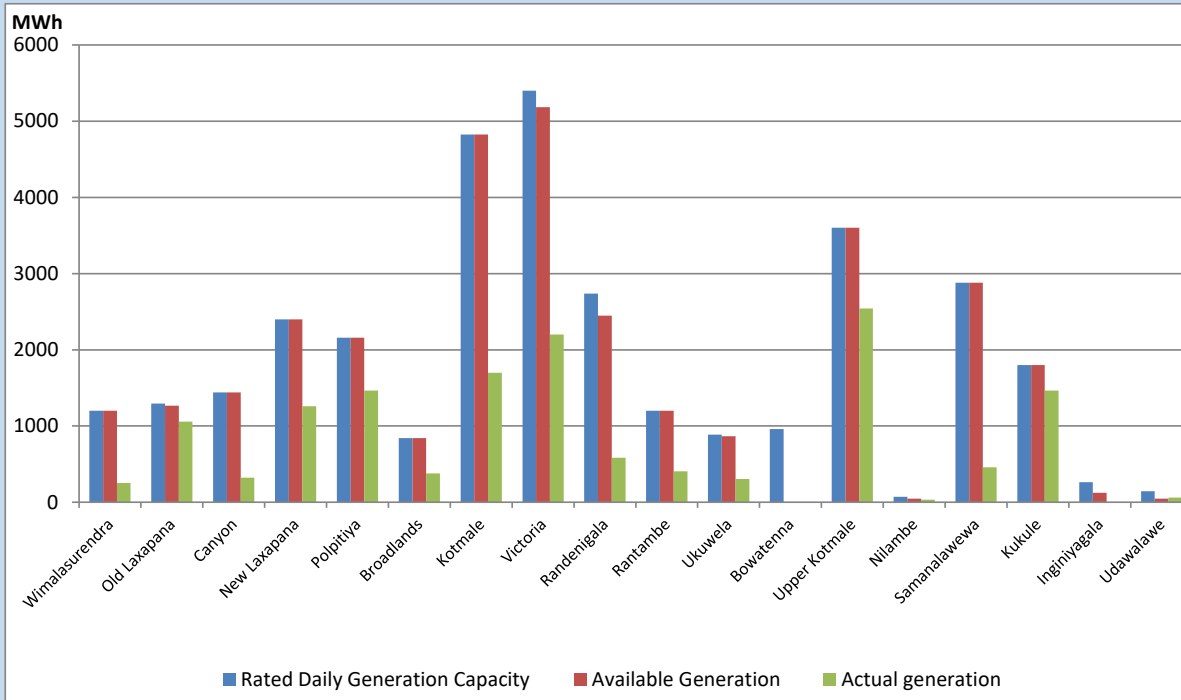


Note- Plant availability is recorded at 6.00 am on

July 28, 2022

Major Hydro Plant Dispatch

July 27, 2022

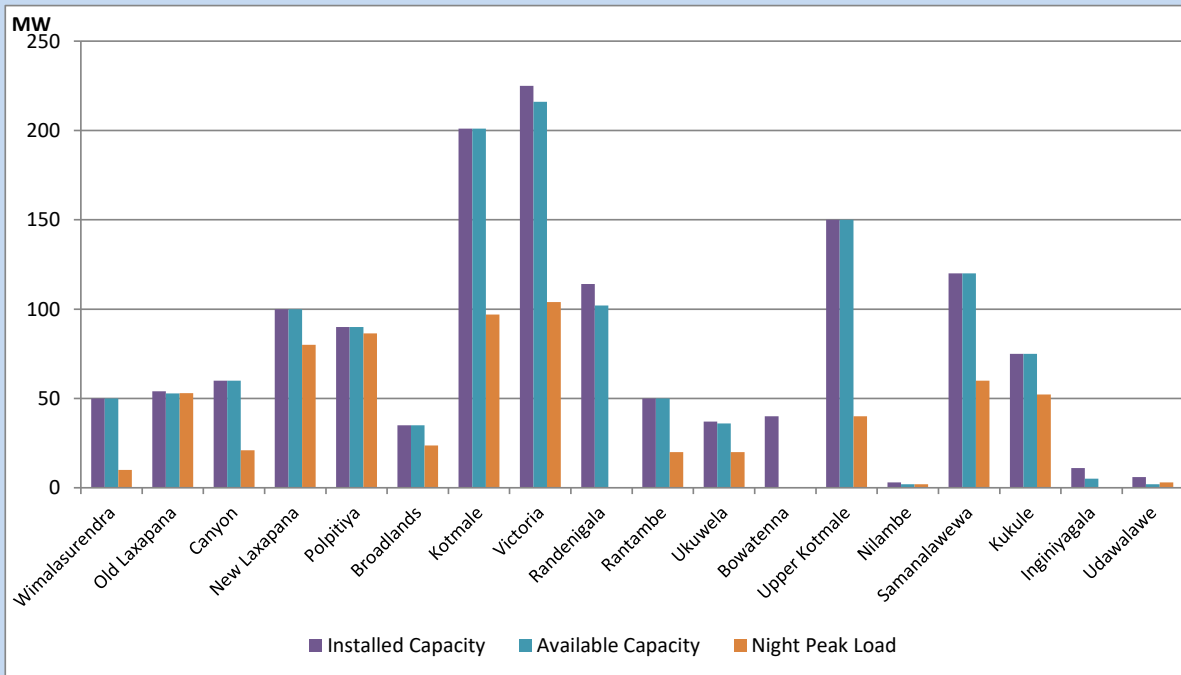


Available Generation is estimated based on plant availability at 6.00am on
Broadlands power plant is operating in the Commissioning Stage

July 28, 2022

Major Hydro Plant Loading at Night Peak

July 27, 2022



Note- Plant availability is recorded at 6.00 am on
Broadlands power plant is operating in the Commissioning Stage

July 28, 2022

Summary of Major Plant performance

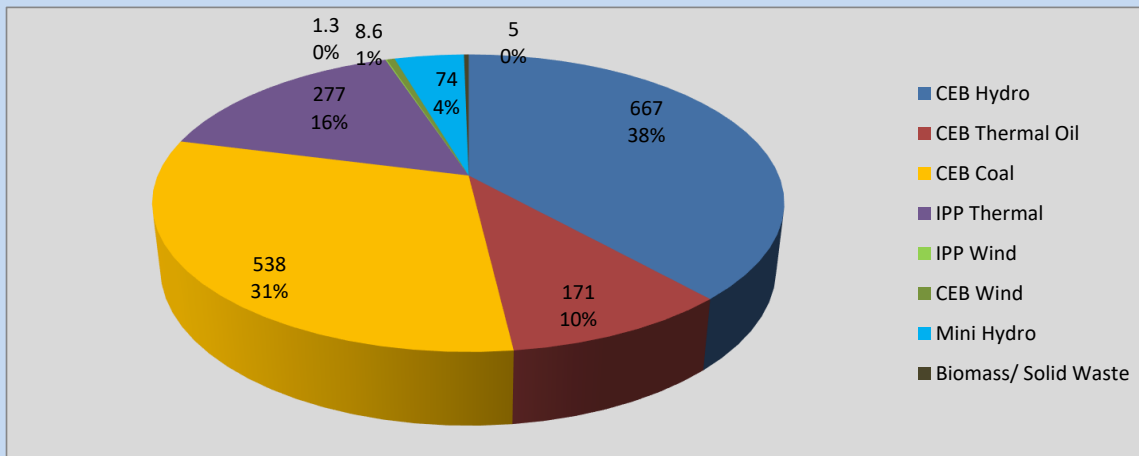
Plant	Installed Capacity	Plant Availability	Night peak Load	Plant Dispatch
	(MW)	(MW)	(MW)	(MWh)
Wimalasurendra	50	50	10	254
Old Laxapana	54	53	53	1,059
Canyon	60	60	21	321
New Laxapana	100	100	80	1,261
Polpitiya	90	90	86	1,464
Broadlands	35	35	24	377
Kotmale	201	201	97	1,700
Victoria	225	216	104	2,199
Randenigala	114	102	0	583
Rantambe	50	50	20	405
Ukuwela	37	36	20	304
Bowatenna	40	0	0	0
Upper Kotmale	150	150	40	2,542
Nilambe	3	2	2	33
Samanalawewa	120	120	60	458
Kukule	75	75	52	1,464
Inginiyagala	11	5	0	0
Udawalawe	6	2	3	61
Puttalam Coal I	270	270	268	6,451
Puttalam Coal II	270	0	0	0
Puttalam Coal III	270	270	270	6,504
KPS Small GTs	64	16	0	0
KPS GT 7	115	0	0	0
KCCP	161	0	0	0
Sapugaskanda A	70	51	48	1,010
Sapugaskanda B	70	63	63	1,310
Uthura Janani	26	0	0	0
Barge CEB	60	60	60	718
CEB-Thulhiriya	10	8	0	0
CEB-Kolonnawa	20	14	0	0
CEB-Mathugama	20	12	0	0
ACE Matara	24	0	0	0
Sojitz Kelanitissa	163	0	0	0
West Coast	270	270	277	5,988
ACE Embilipitiya	93	0	0	0
Total	3,397	2,381	1,747	38,440

Plant availability is the availability recorded at 6 am on

July 28, 2022

Contribution to the Night Peak in MW

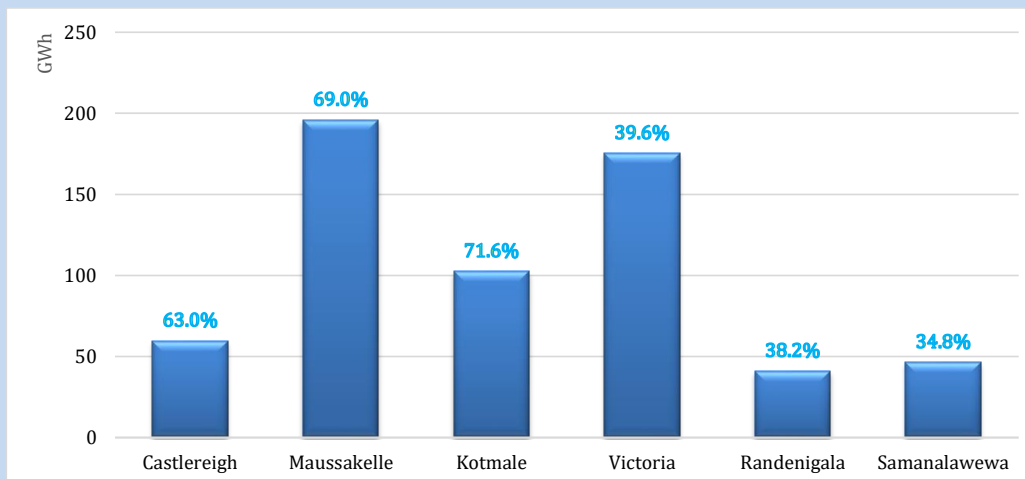
July 27, 2022



Night Peak*	1,742.1 MW
Day Peak	1,983.5 MW
Minimum Demand	1,250.1 MW

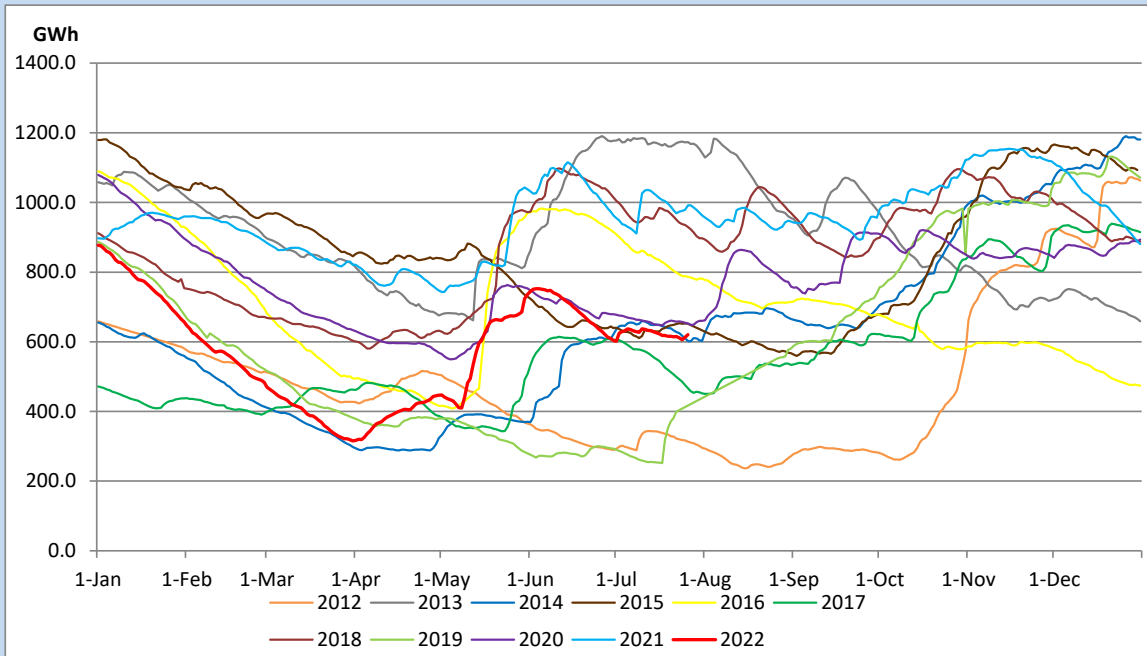
Above figures are excluding contribution from Roof Top Solar, 1MW solar, certain Wind plants and Mini Hydro plants

Reservoir Levels - as at 06.00 Hr on July 28, 2022

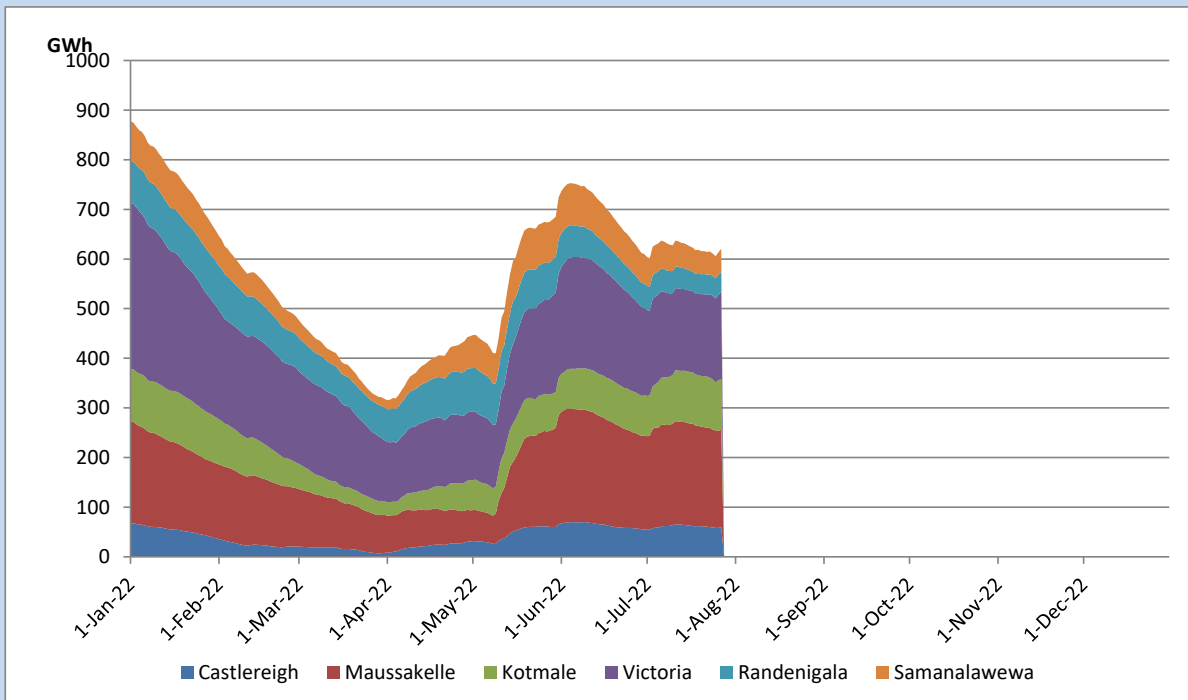


Total Reservoir Level	620.8 GWh
% of Total capacity	51.5%

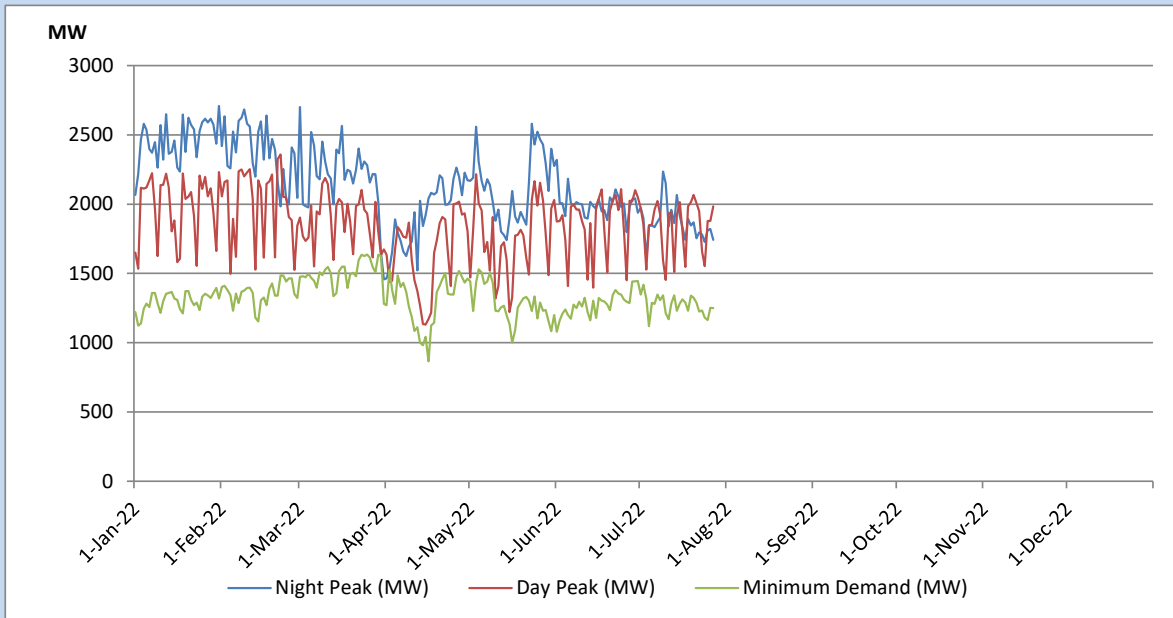
Comparison of Total Reservoir Storage Levels with Past Years



Variation of Major Hydro Reservoir Levels in the current year (GWh)



Variation of Demand during the current year

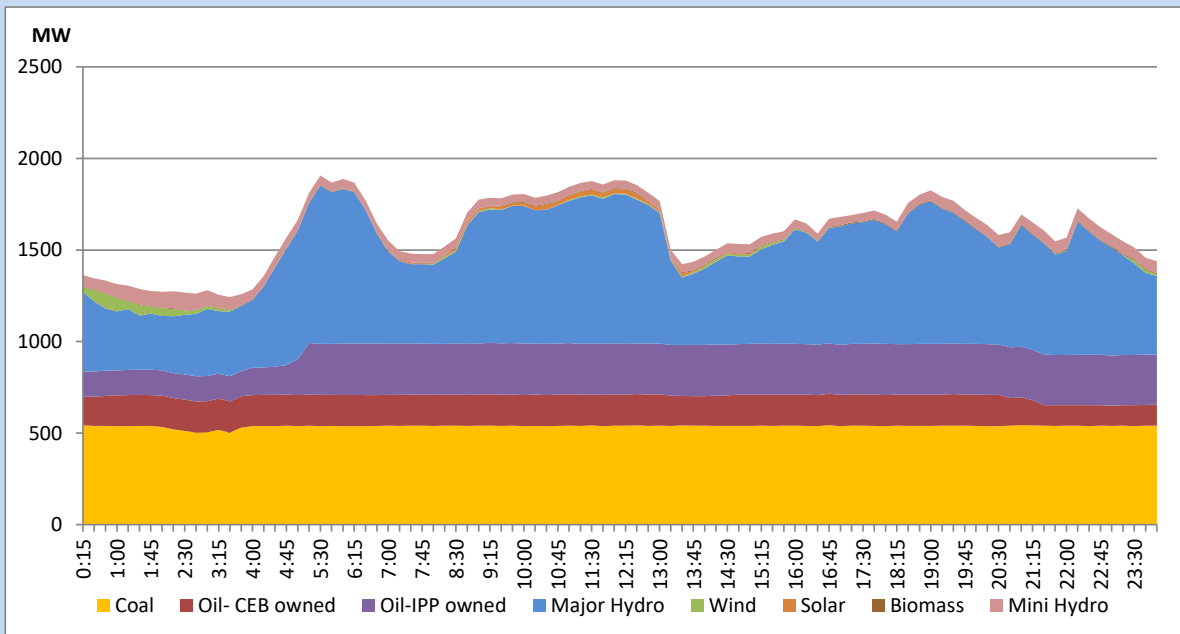


The above figures are excluding contribution from Roof Top Solar, 1MW solar, certain Wind plants and Mini Hydro plants

Daily Load Curve of the Previous day

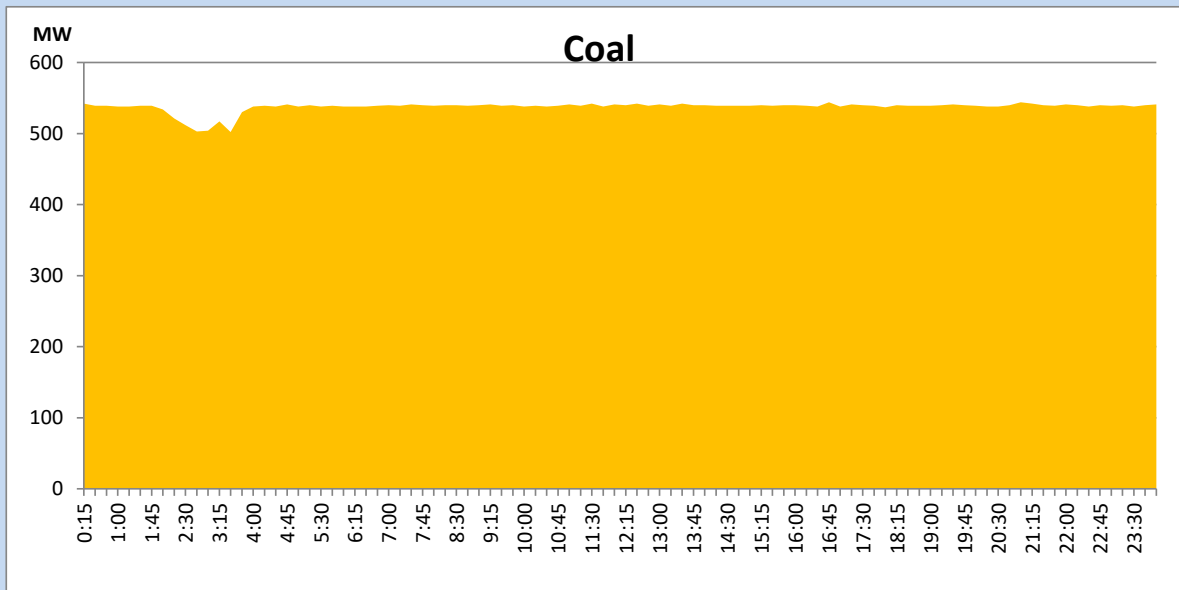
July 26, 2022

Solar and wind data is based on Telemetered Power Stations only



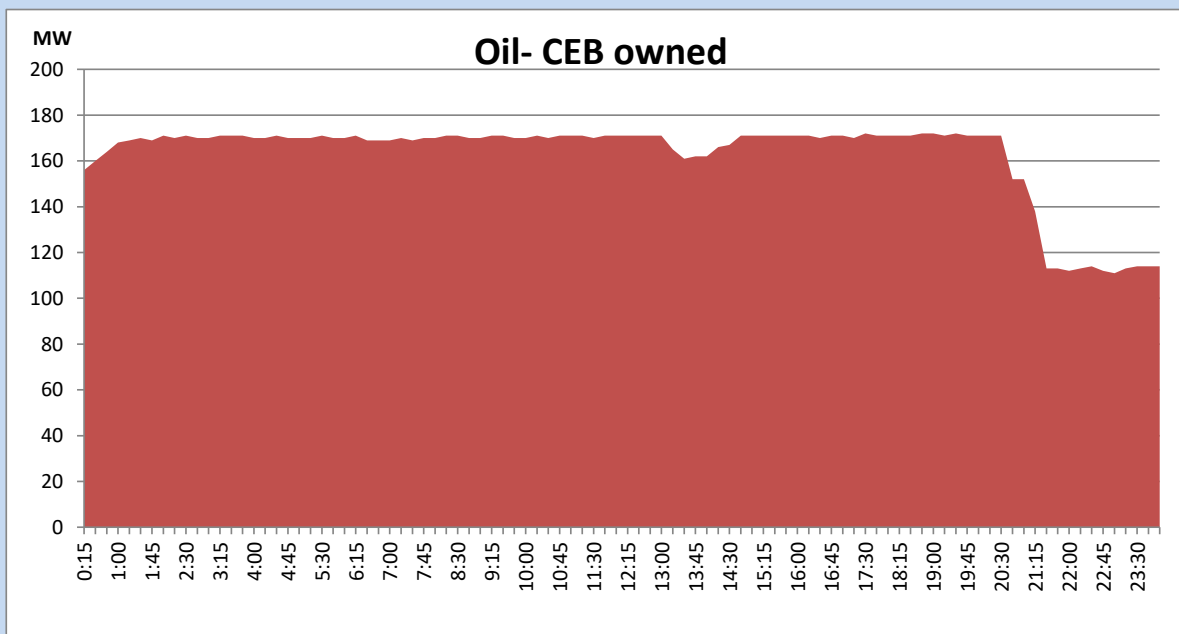
Coal Generation during the Previous day

July 26, 2022



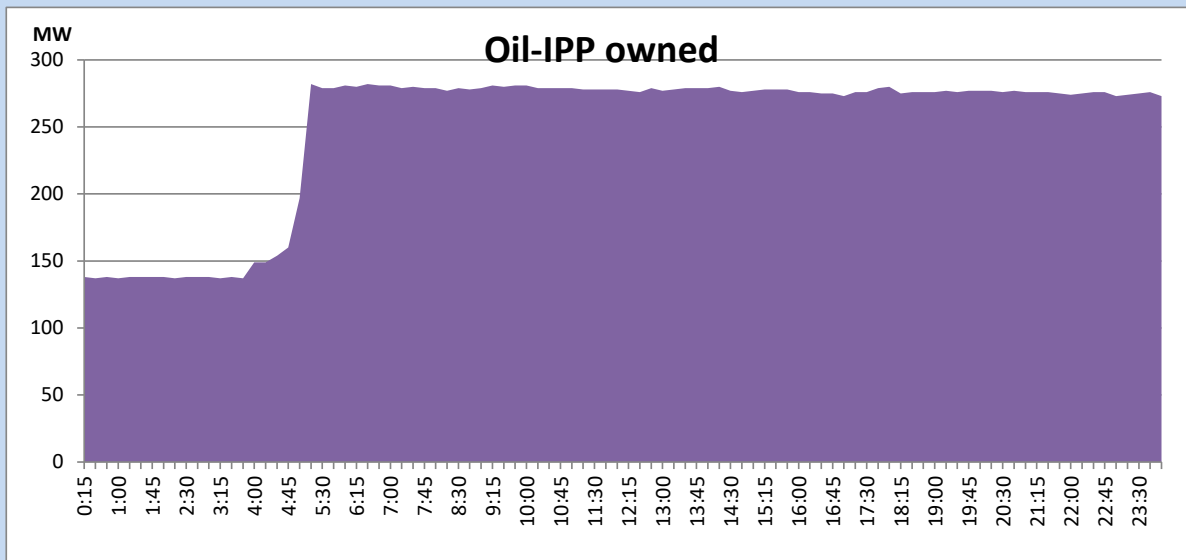
CEB Oil Plant Generation during the Previous day

July 26, 2022



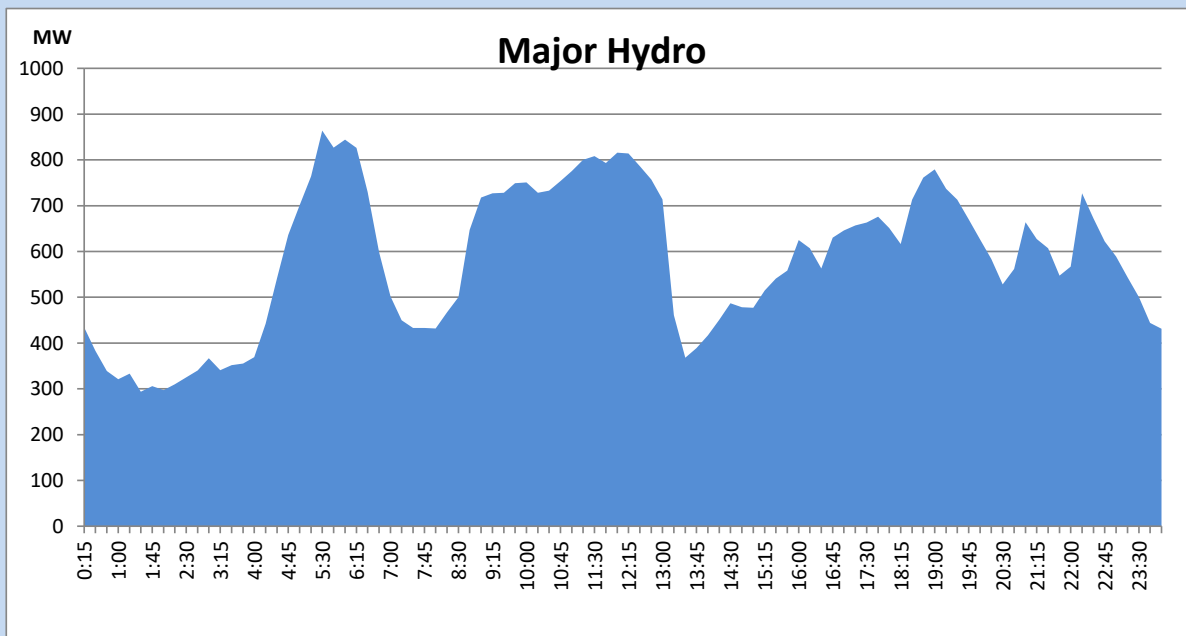
IPP Oil Plant Generation during the Previous day

July 26, 2022



Major Hydro Generation during the Previous day

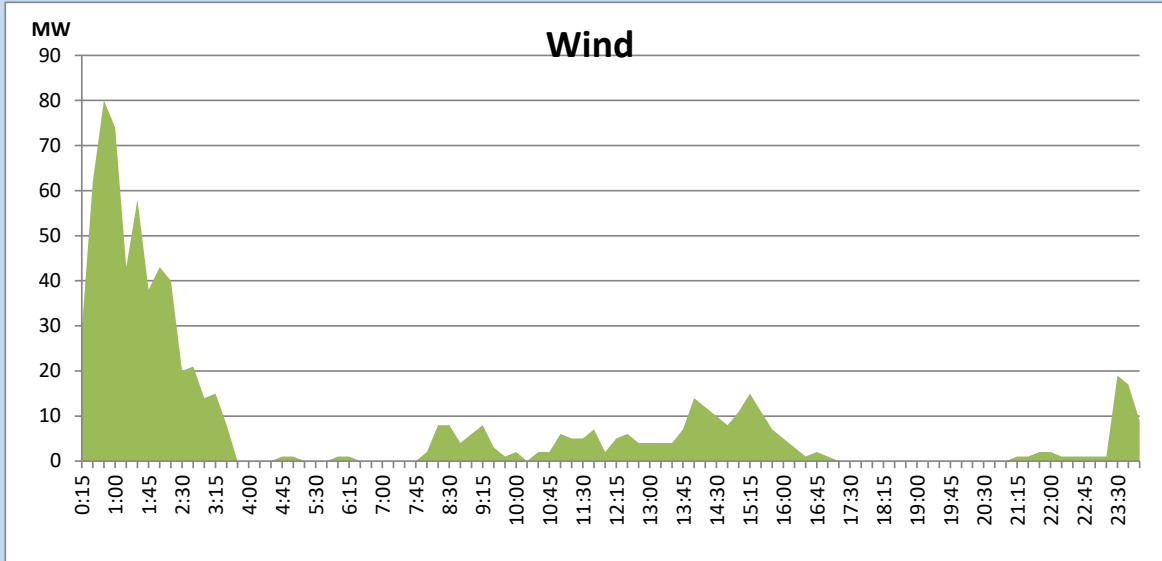
July 26, 2022



Wind Generation during the Previous day

July 26, 2022

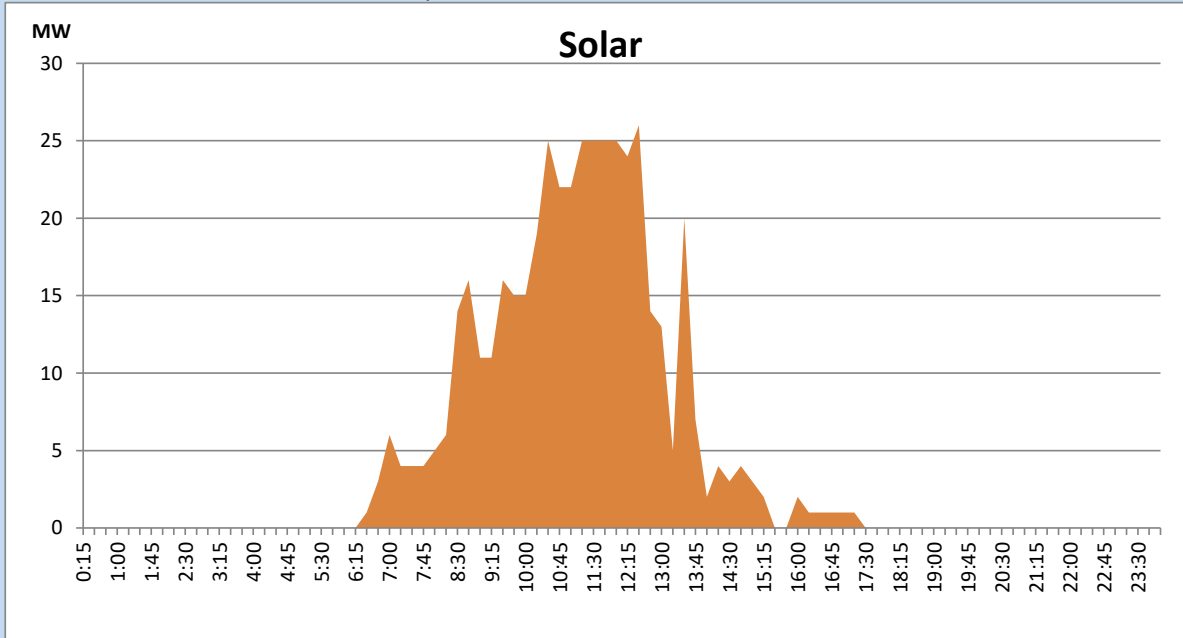
Based on Telemetered Power Stations only



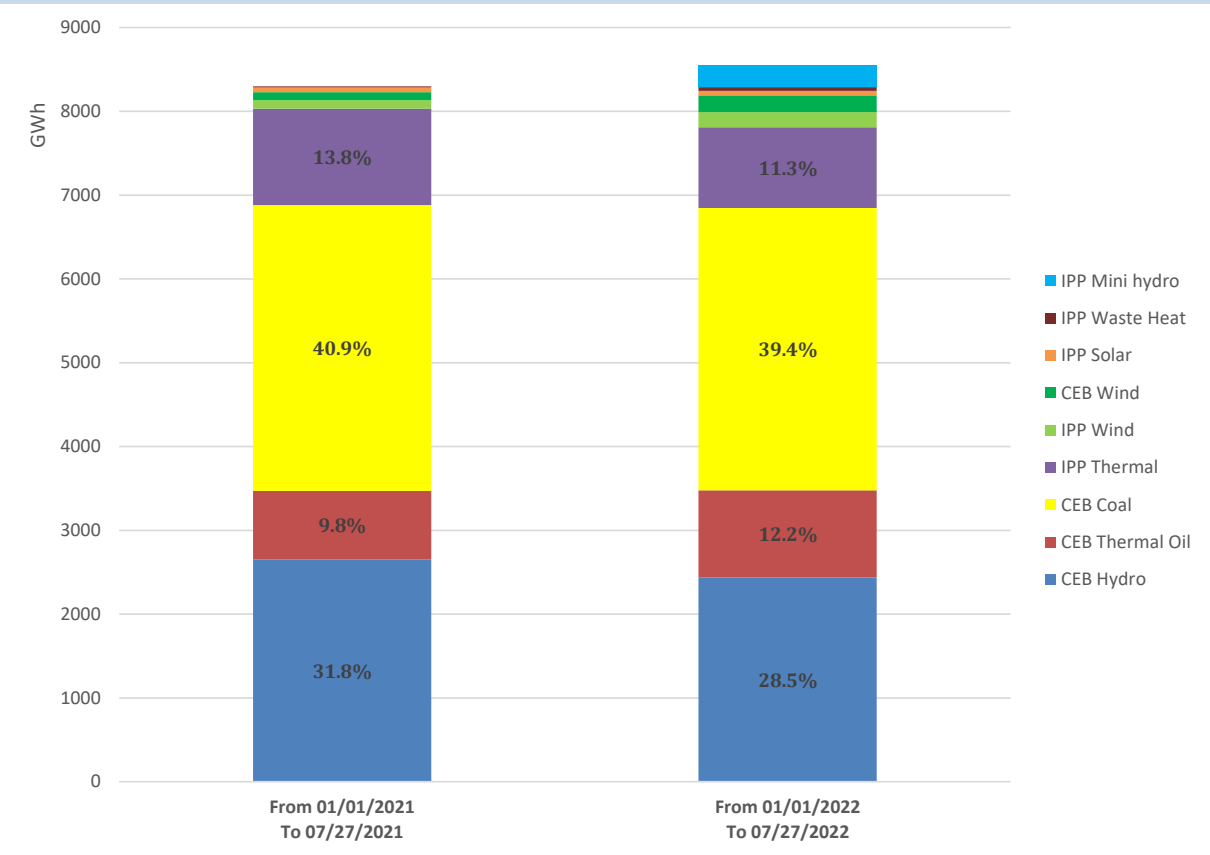
Solar Generation during the Previous day

July 26, 2022

Based on Telemetered Power Stations only



Cumulative Dispatch Comparison with Last Year



Thermal Plant Fuel types

Power Station	Primary Fuel
CEB Thermal	
Sapugaskanda 1	Heavy Fuel
Sapugaskanda 2	Heavy Fuel
Kelanitissa Small Gas Turbines	Auto Diesel
GT 7 - Kelanitissa	Auto Diesel
Kelanitissa CCY	Naphtha or Diesel
Lakvijaya 1	Coal
Lakvijaya 2	Coal
Lakvijaya 3	Coal
Uthuru Janani	Heavy Fuel
Barge CEB	Heavy Fuel

Power Station	Primary Fuel
Private Thermal	
Sojitz - Kelanitissa	Auto Diesel
West Coast	Auto Diesel / Heavy Fuel
ACE Matara	Heavy Fuel
ACE Embilipitiya	Heavy Fuel

Major Incidents during the day -as reported by CEB morning of

July 28, 2022

- 1) Rotational manual load shedding was carried out from 05:30 hrs to 08:30 hrs and 13:00 hrs to 22:00 hrs.
- 2) Puttlam 132/33kV T/F 01 & T/F 03 tripped along with 33kV B/S 01 at 11:11hrs causing all the feeders of 33kV B/S 01 are to be dead. All affected equipment and feeders were restored at 14:22hrs.
- 3) Sapugaskanda GSS-Kelaniya cct 01 tripped & A/R from both ends at 13:41hrs. At the same time, Sapugaskanda GSS-Kelaniya ct 02 tripped only from Sapugaskanda GSS side and tripped & A/R from Kelaniya side. The cct was restored at 14:03hrs.
- 4) Biyagama-Kelanithissa 220kV both ccts were manually switched off at 20:00hrs due to detection of a smoke. Biyagama-Kelanithissa cct 01 was restored at 01:25hrs (28.07.2022) and the cct 02 is yet to be restored.
- 5) Kukule spilling started at 00:15hrs (28.07.2022) and continues to the present hour.