

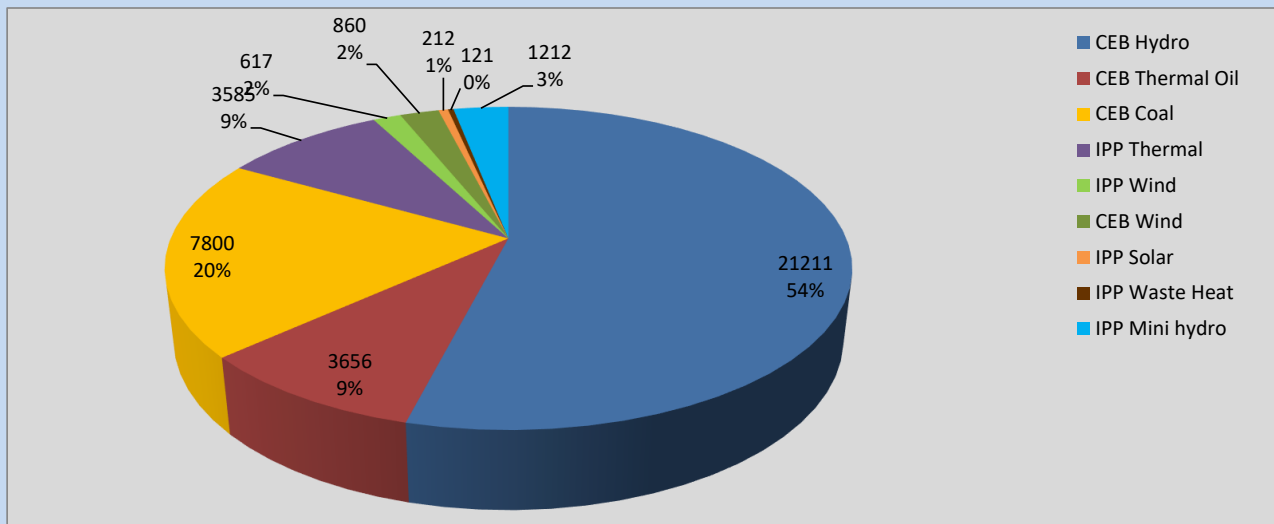
Generation and Reservoirs Statistics

August 26, 2022



PUBLIC UTILITIES COMMISSION OF SRI LANKA

Daily Generation Mix in MWh



Total Generation **39,274 MWh**

Note: Above data is excluding contribution from Roof Top Solar, 1MW Solar and certain Mini Hydro plants

Cumulative Dispatch

Note: Following data is Excluding contribution from Roof Top Solar, 1MW solar and Mini Hydro plants

For Current Month

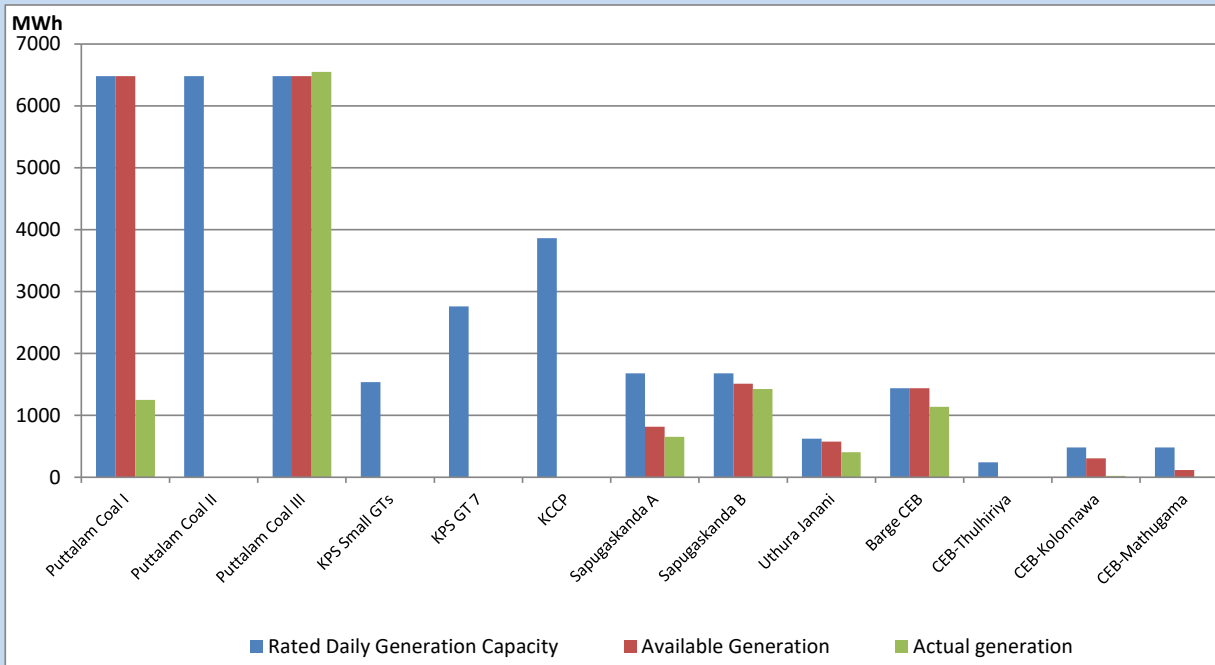
Category	Dispatch (GWh)	Percentage
CEB Hydro	535.67	52.97%
CEB Thermal Oil	51.28	5.07%
CEB Coal	234.76	23.21%
IPP Thermal	53.32	5.27%
SPP Wind	43.22	4.27%
CEB Wind	40.94	4.05%
SPP Solar	7.13	0.71%
SPP Solid Waste	4.15	0.41%
Mini Hydro	40.79	4.03%
Total	1,011.26	

For Current Year

Category	Dispatch (GWh)	Percentage
CEB Hydro	3,033.8	31.27%
CEB Thermal Oil	1,106.6	11.41%
CEB Coal	3,654.4	37.67%
IPP Thermal	1,025.8	10.57%
SPP Wind	227.2	2.34%
CEB Wind	242.2	2.50%
SPP Solar	61.1	0.63%
SPP Solid Waste	48.2	0.50%
Mini Hydro	301.8	3.11%
Total	9,700.9	

CEB owned Thermal Plant Dispatch

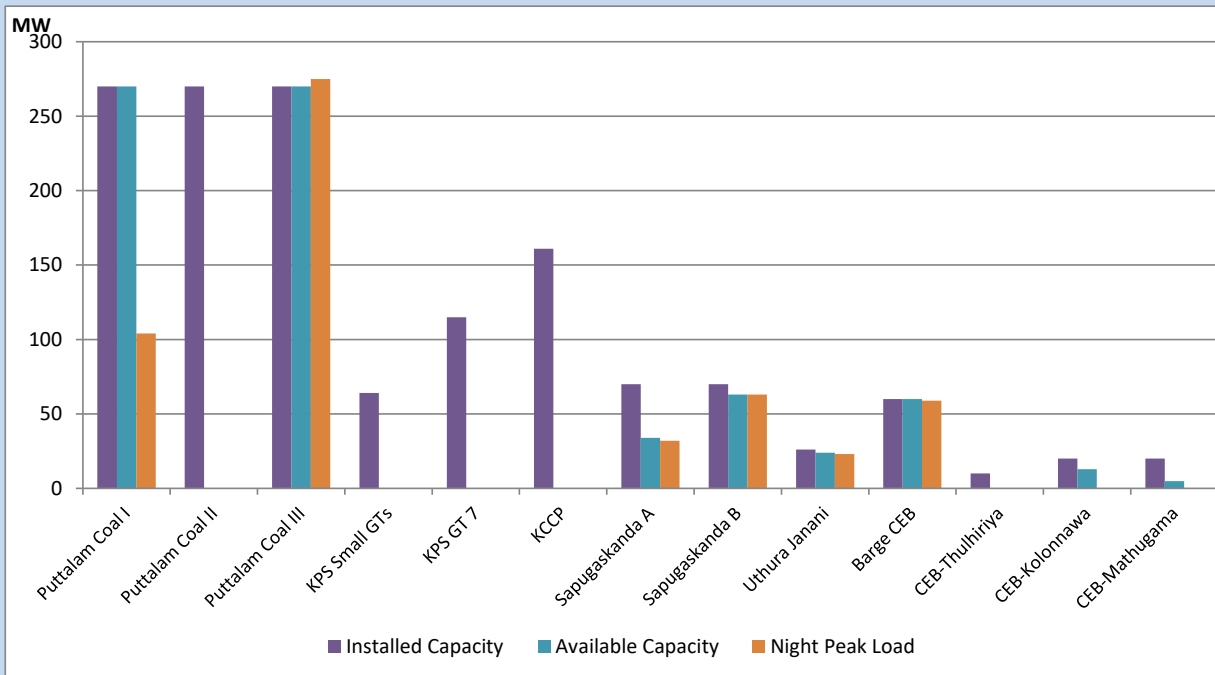
August 26, 2022



Available Generation is estimated based on plant availability at 6.00am on

August 27, 2022

CEB owned Thermal Plant Loading at the Night Peak



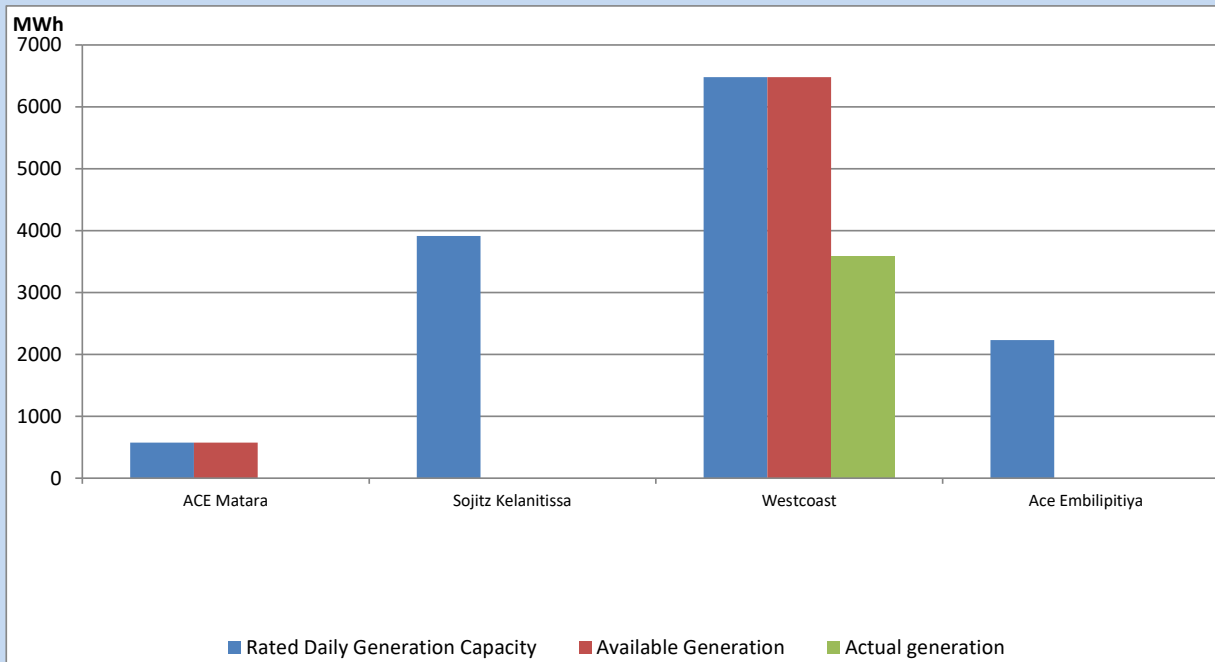
Note- Plant availability is recorded at 6.00 am on

August 27, 2022

IPP owned Thermal Plant Dispatch

August 26, 2022

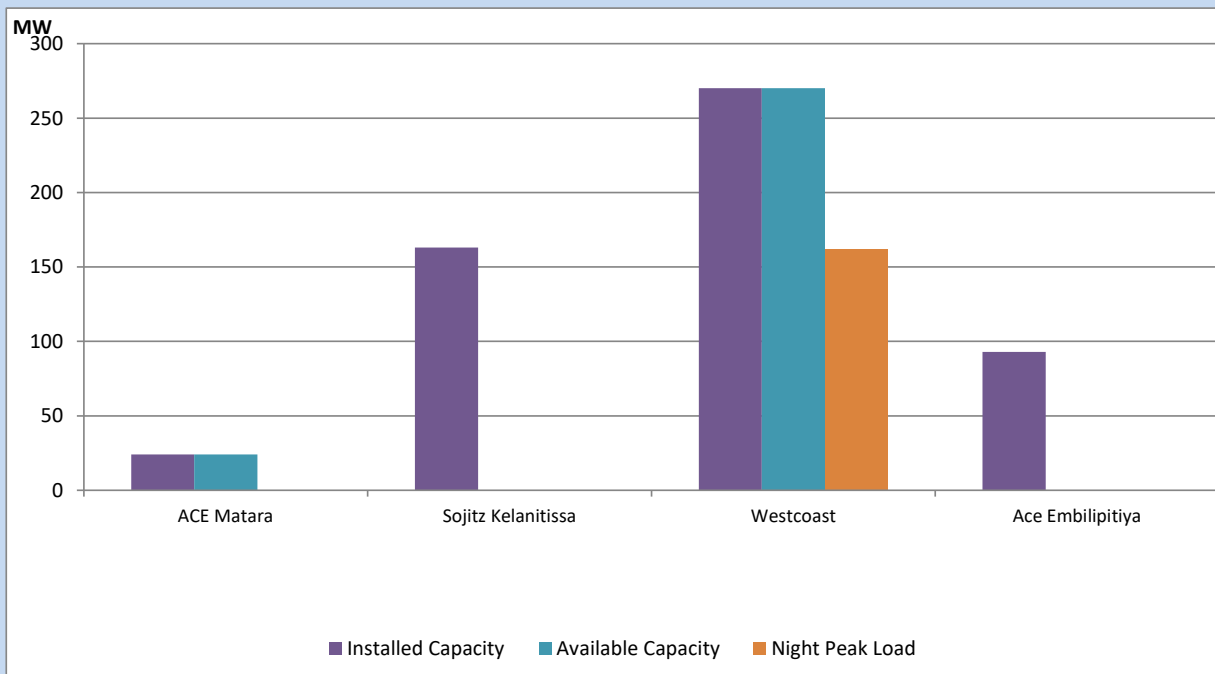
Asia Power, V Power Pallekale, Vpower Galle, V Power Horana, Vpower Hambantota, Vpower Valachchena and Altaqa Mahiyanganaya are not available due to expiration of PPAs



Available Generation is estimated based on plant availability at 6.00am on

August 27, 2022

IPP owned Thermal Plant Loading at the Night Peak

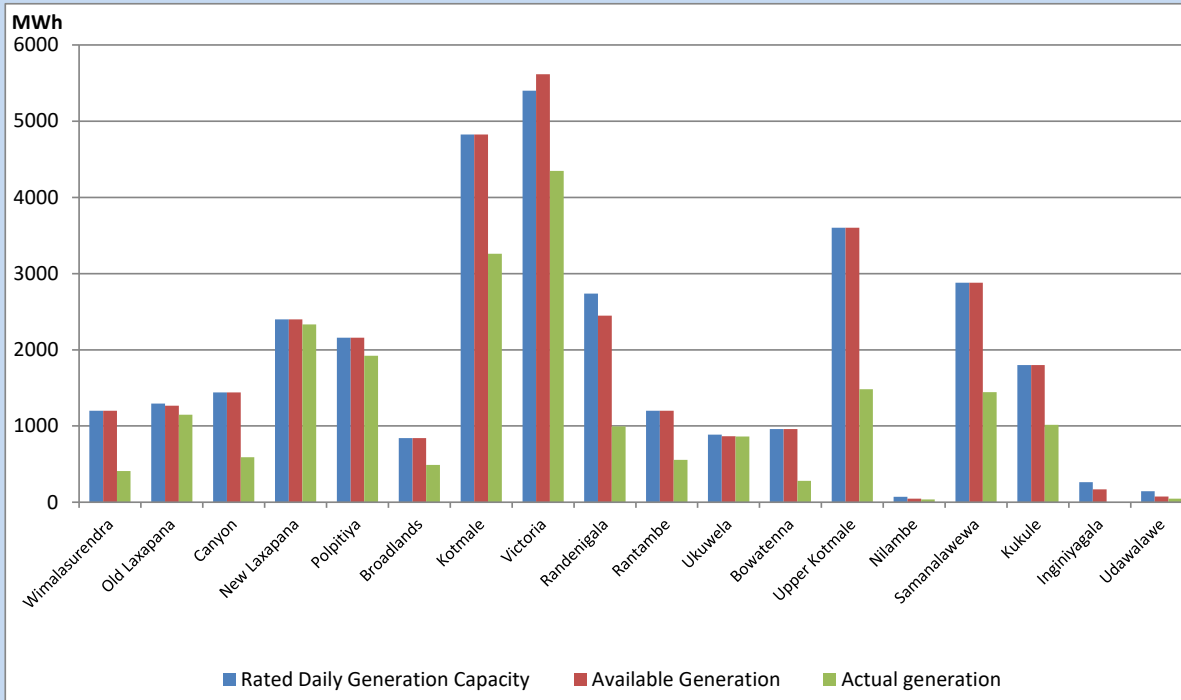


Note- Plant availability is recorded at 6.00 am on

August 27, 2022

Major Hydro Plant Dispatch

August 26, 2022

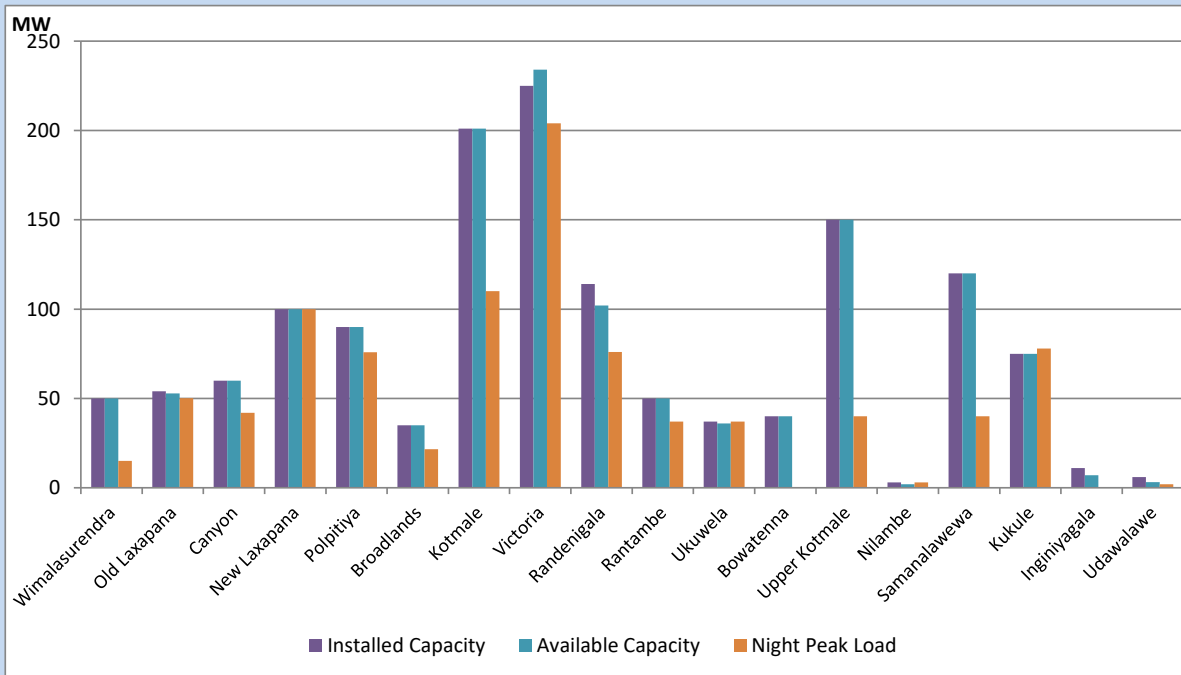


Available Generation is estimated based on plant availability at 6.00am on August 27, 2022
 Broadlands power plant is operating in the Commissioning Stage

August 27, 2022

Major Hydro Plant Loading at Night Peak

August 26, 2022



Note- Plant availability is recorded at 6.00 am on August 27, 2022
 Broadlands power plant is operating in the Commissioning Stage

Summary of Major Plant performance

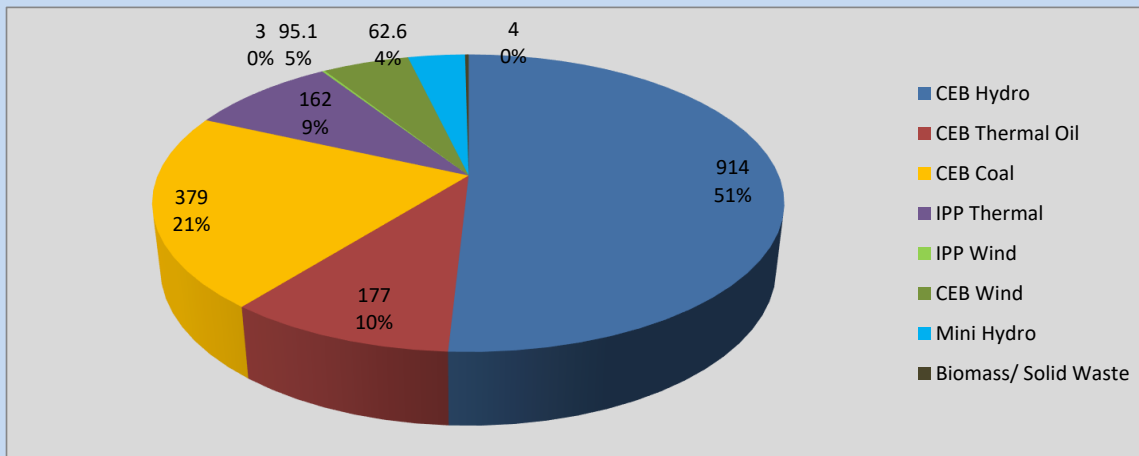
Plant	Installed Capacity	Plant Availability	Night peak Load	Plant Dispatch
	(MW)	(MW)	(MW)	(MWh)
Wimalasurendra	50	50	15	409
Old Laxapana	54	53	50	1,147
Canyon	60	60	42	589
New Laxapana	100	100	100	2,332
Polpitiya	90	90	76	1,921
Broadlands	35	35	22	489
Kotmale	201	201	110	3,260
Victoria	225	234	204	4,349
Randenigala	114	102	76	996
Rantambe	50	50	37	554
Ukuwela	37	36	37	862
Bowatenna	40	40	0	280
Upper Kotmale	150	150	40	1,483
Nilambe	3	2	3	37
Samanalawewa	120	120	40	1,443
Kukule	75	75	78	1,015
Inginiyagala	11	7	0	0
Udawalawe	6	3	2	45
Puttalam Coal I	270	270	104	1,249
Puttalam Coal II	270	0	0	0
Puttalam Coal III	270	270	275	6,551
KPS Small GTs	64	0	0	0
KPS GT 7	115	0	0	0
KCCP	161	0	0	0
Sapugaskanda A	70	34	32	655
Sapugaskanda B	70	63	63	1,427
Uthura Janani	26	24	23	405
Barge CEB	60	60	59	1,137
CEB-Thulhiriya	10	0	0	0
CEB-Kolonnawa	20	13	0	23
CEB-Mathugama	20	5	0	9
ACE Matara	24	24	0	0
Sojitz Kelanitissa	163	0	0	0
West Coast	270	270	162	3,585
ACE Embilipitiya	93	0	0	0
Total	3,397	2,441	1,814	39,274

Plant availability is the availability recorded at 6 am on

August 27, 2022

Contribution to the Night Peak in MW

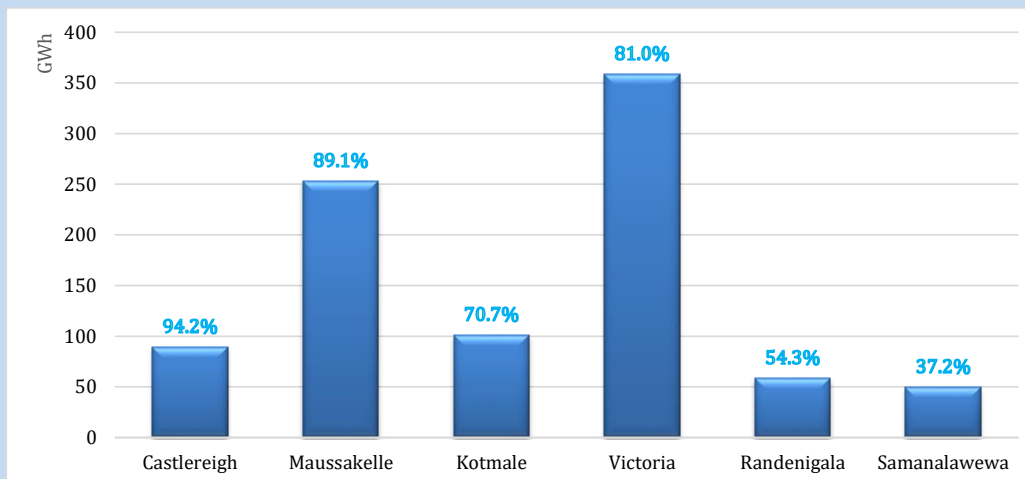
August 26, 2022



Night Peak*	1,796.3 MW
Day Peak	1,990.3 MW
Minimum Demand	1,303.3 MW

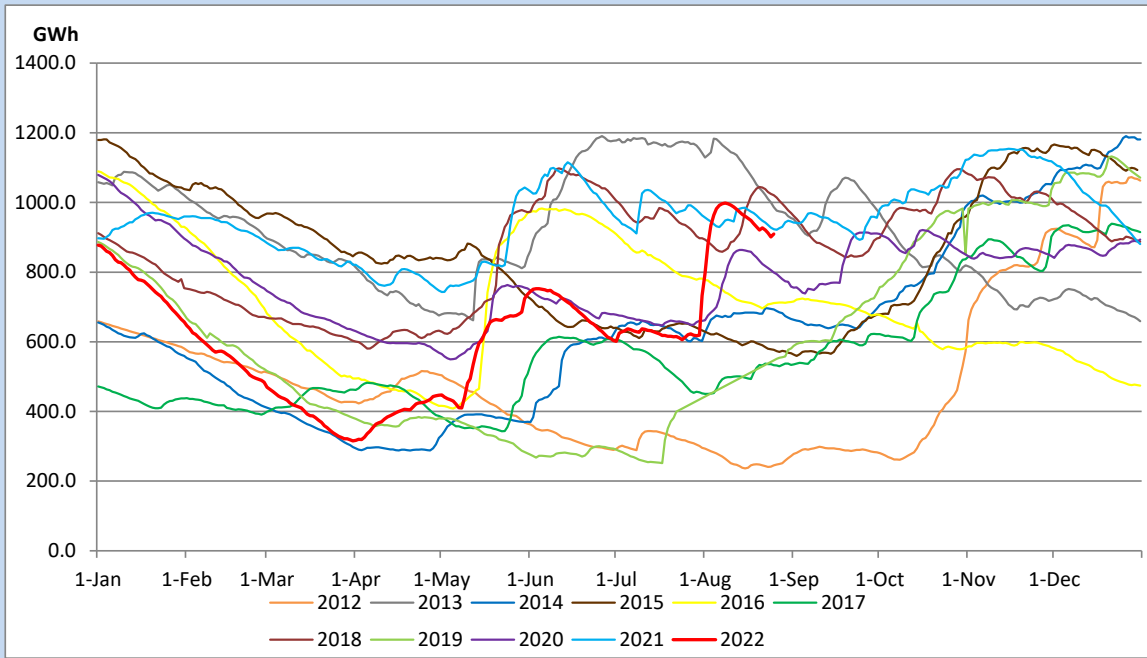
Above figures are excluding contribution from Roof Top Solar, 1MW solar, certain Wind plants and Mini Hydro plants

Reservoir Levels - as at 06.00 Hr on August 27, 2022

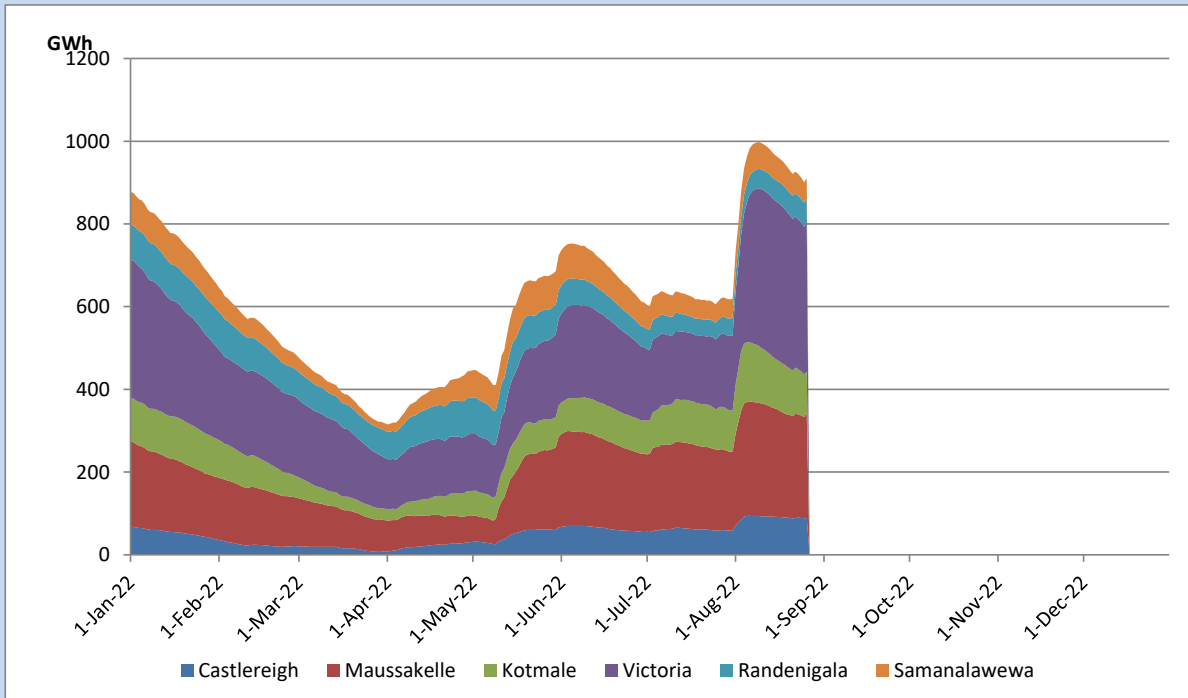


Total Reservoir Level	909.8 GWh
% of Total capacity	75.5%

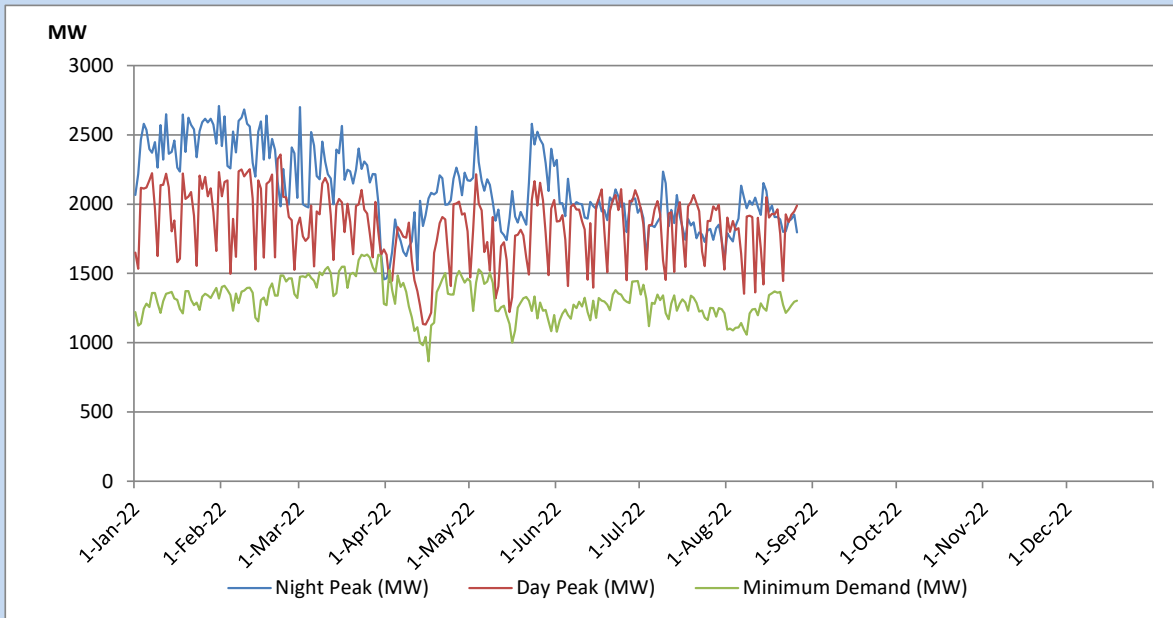
Comparison of Total Reservoir Storage Levels with Past Years



Variation of Major Hydro Reservoir Levels in the current year (GWh)



Variation of Demand during the current year

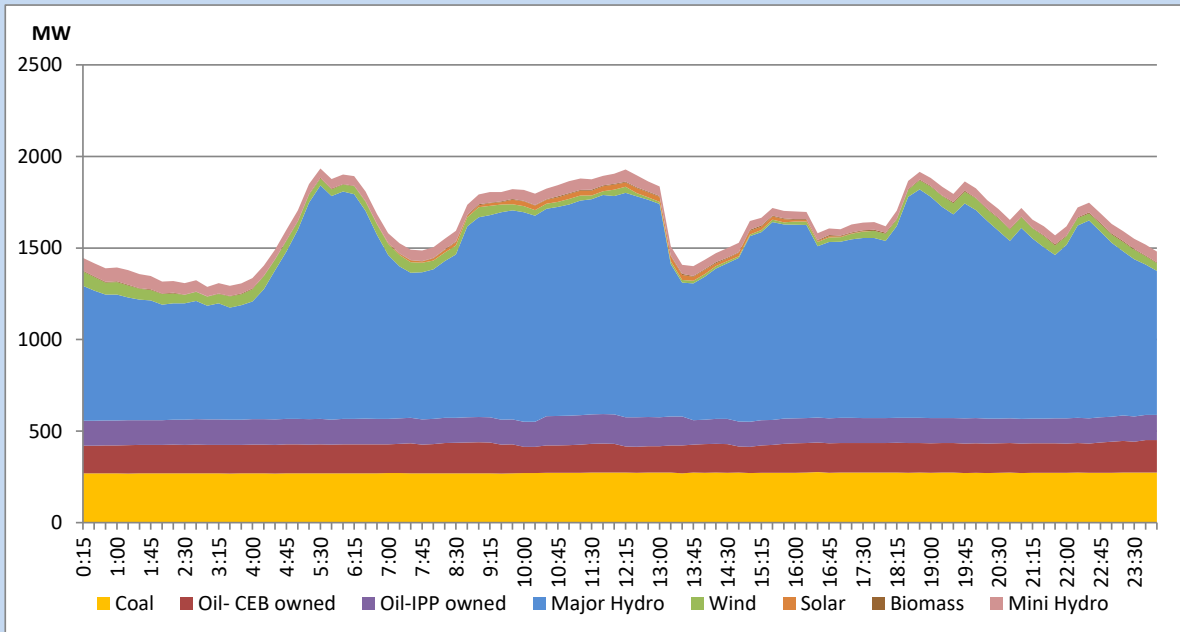


The above figures are excluding contribution from Roof Top Solar, 1MW solar, certain Wind plants and Mini Hydro plants

Daily Load Curve of the Previous day

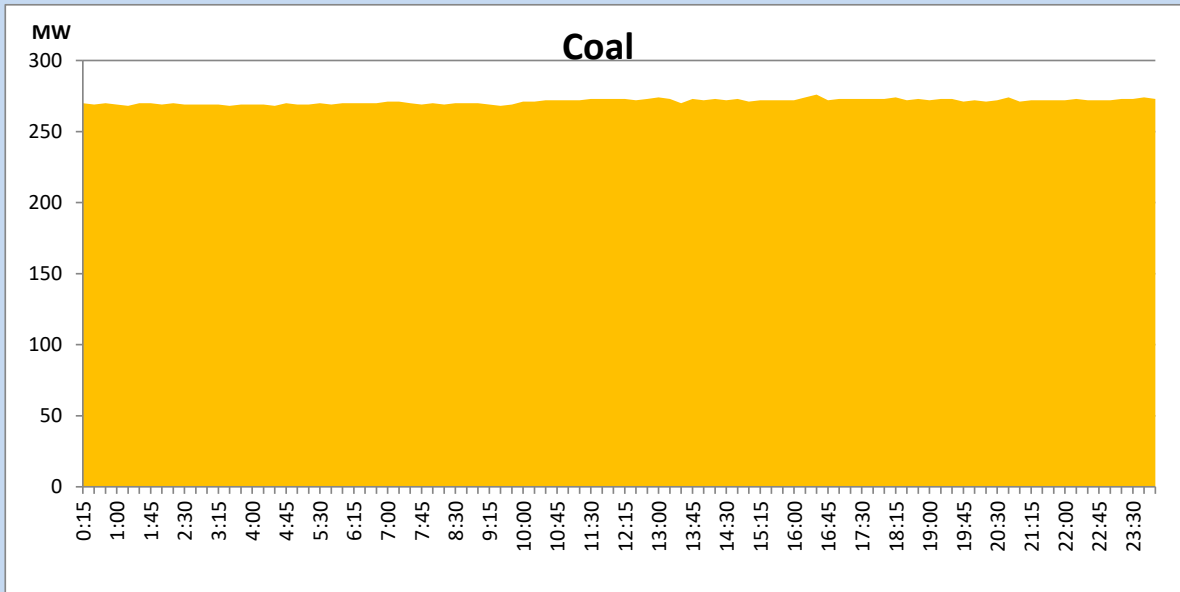
August 25, 2022

Solar and wind data is based on Telemetered Power Stations only



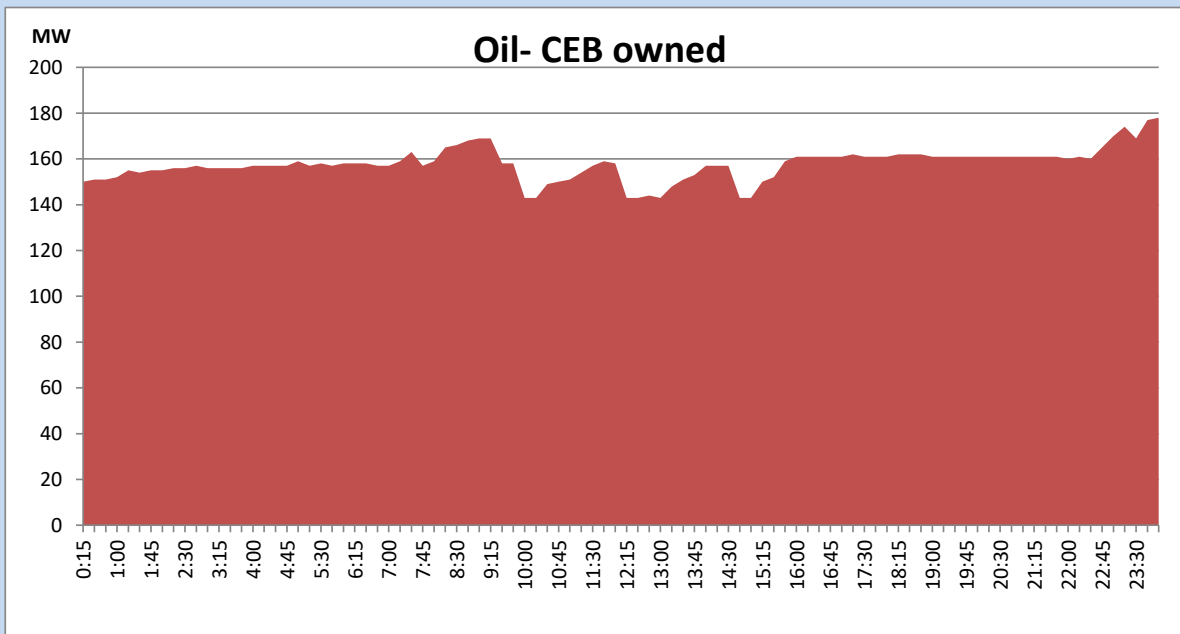
Coal Generation during the Previous day

August 25, 2022



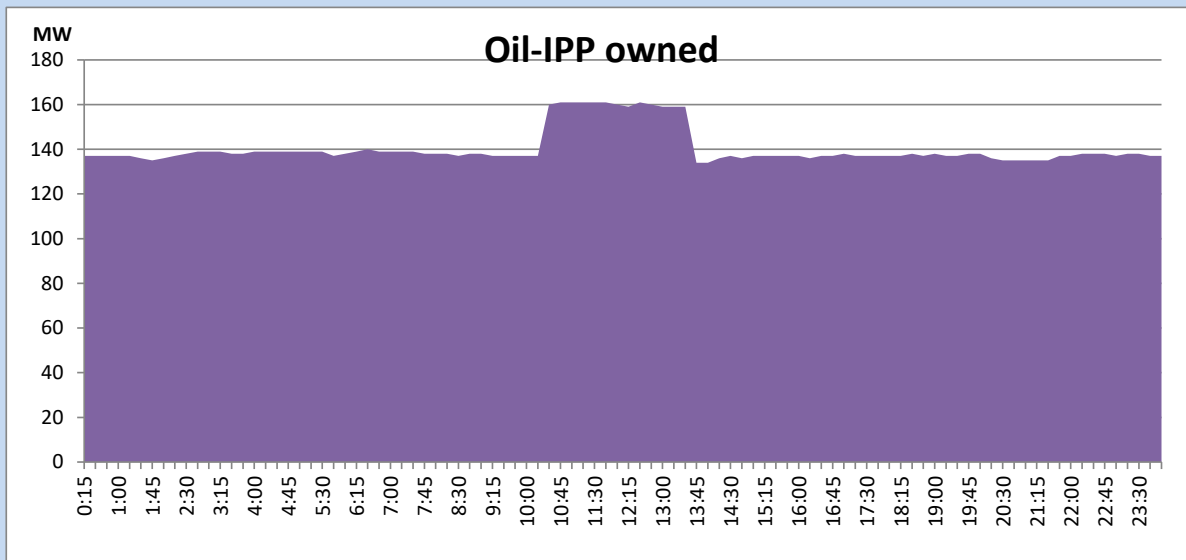
CEB Oil Plant Generation during the Previous day

August 25, 2022



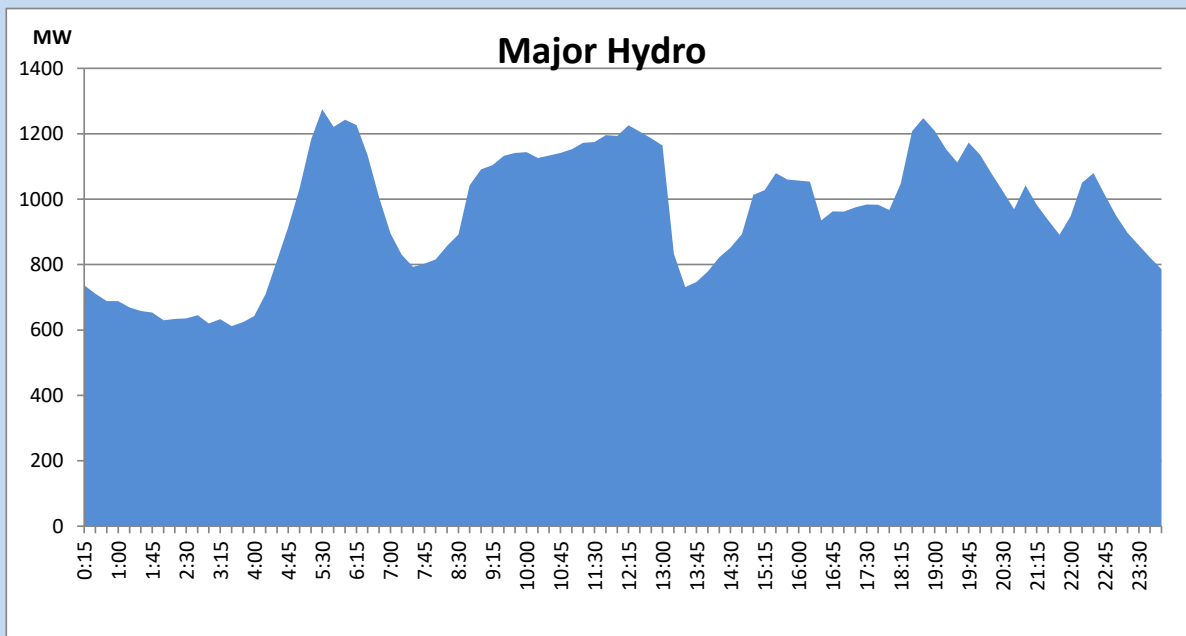
IPP Oil Plant Generation during the Previous day

August 25, 2022



Major Hydro Generation during the Previous day

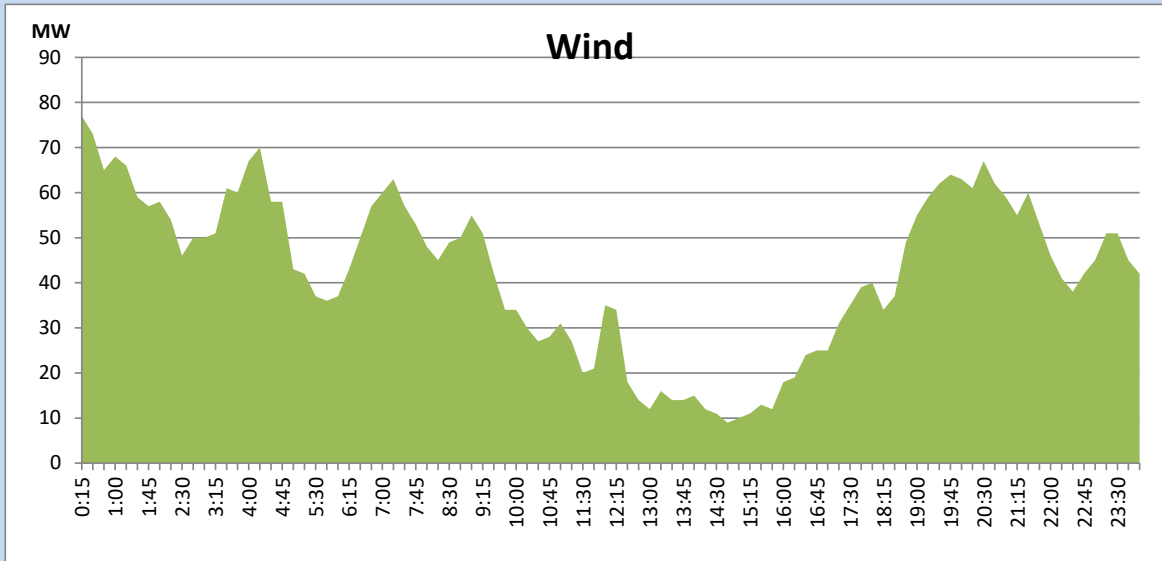
August 25, 2022



Wind Generation during the Previous day

August 25, 2022

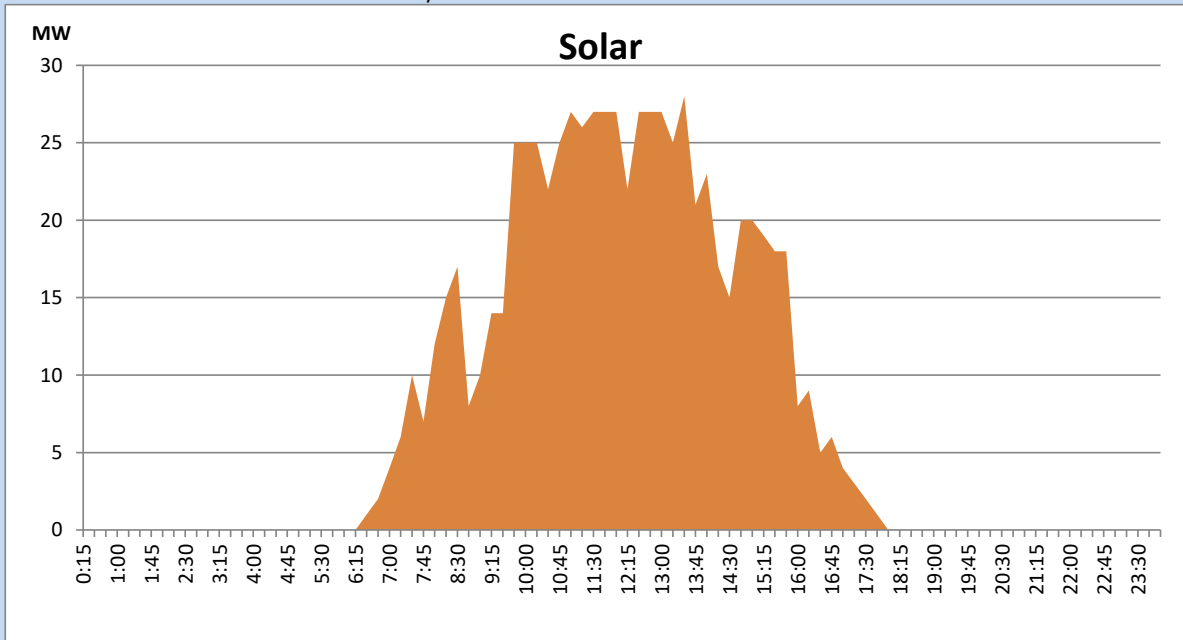
Based on Telemetered Power Stations only



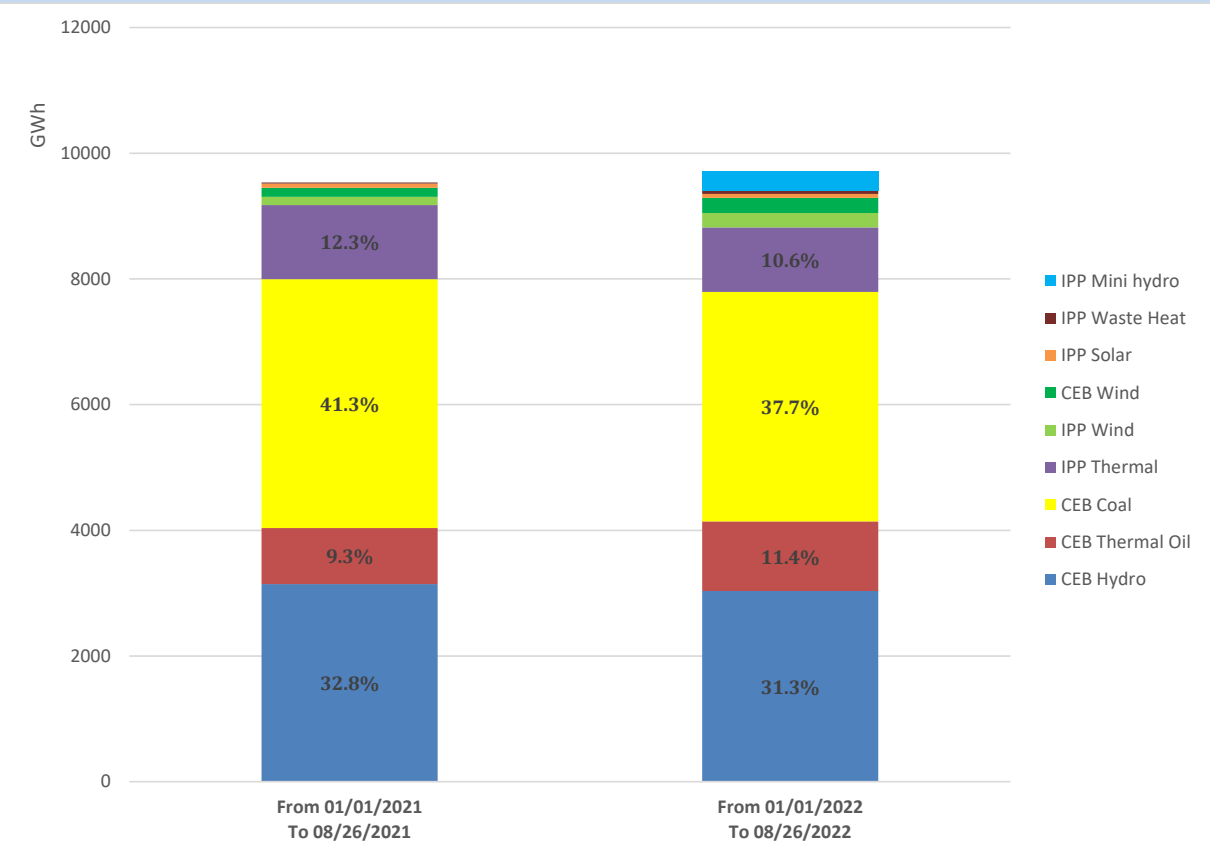
Solar Generation during the Previous day

August 25, 2022

Based on Telemetered Power Stations only



Cumulative Dispatch Comparison with Last Year



Thermal Plant Fuel types

Power Station	Primary Fuel
CEB Thermal	
Sapugaskanda 1	Heavy Fuel
Sapugaskanda 2	Heavy Fuel
Kelanitissa Small Gas Turbines	Auto Diesel
GT 7 - Kelanitissa	Auto Diesel
Kelanitissa CCY	Naphtha or Diesel
Lakvijaya 1	Coal
Lakvijaya 2	Coal
Lakvijaya 3	Coal
Uthuru Janani	Heavy Fuel
Barge CEB	Heavy Fuel

Power Station	Primary Fuel
Private Thermal	
Sojitz - Kelanitissa	Auto Diesel
West Coast	Auto Diesel / Heavy Fuel
ACE Matara	Heavy Fuel
ACE Embilipitiya	Heavy Fuel

Major Incidents during the day -as reported by CEB morning of

August 27, 2022

- 1) Rotational manual load shedding was carried out from 05:30 hrs to 08:30 hrs and 13:00 hrs to 22:00 hrs.
- 2) Lakvijaya unit 01 synchronized at 16:31hrs and reached full load by 22:45 hrs.
- 3) Kothmale - Biyagama cct 01 tripped and A/R from both ends at 19:33hrs due to the operation of distance protection.
- 4) Laxapana and Norton ponds spilling started at 02:33hrs and 03:33hrs respectively (27/08/2022). The spilling continues to the present hour.
- 5) Kukule spilling started at 05:45hrs (27/08/2022) and continues to the present hour.