

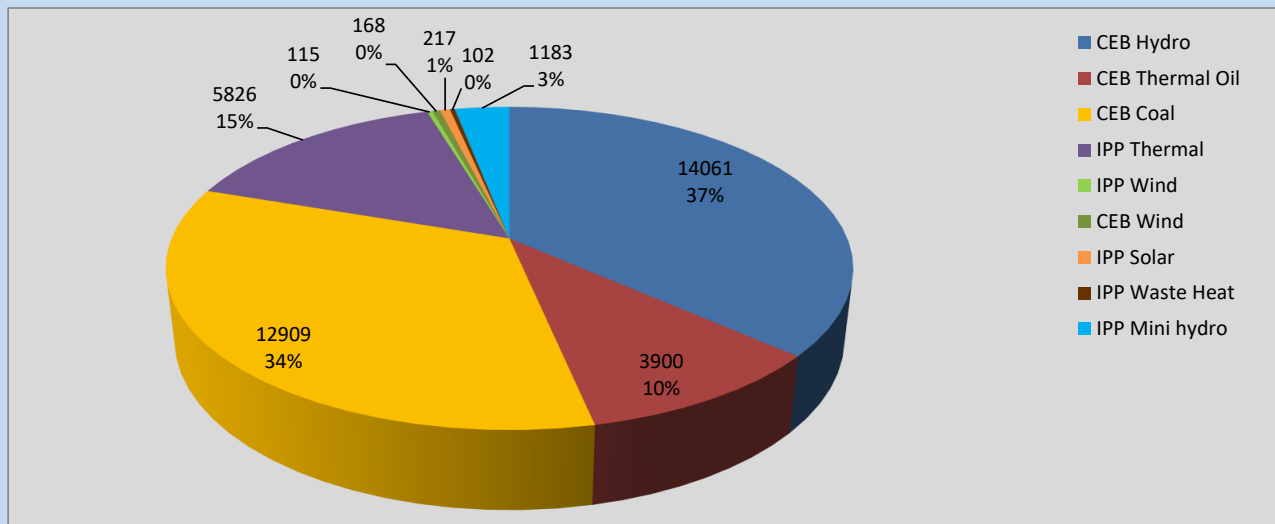
Generation and Reservoirs Statistics

July 26, 2022



PUBLIC UTILITIES COMMISSION OF SRI LANKA

Daily Generation Mix in MWh



Total Generation **38,481 MWh**

Note: Above data is excluding contribution from Roof Top Solar, 1MW Solar and certain Mini Hydro plants

Cumulative Dispatch

Note: Following data is Excluding contribution from Roof Top Solar, 1MW solar and Mini Hydro plants

For Current Month

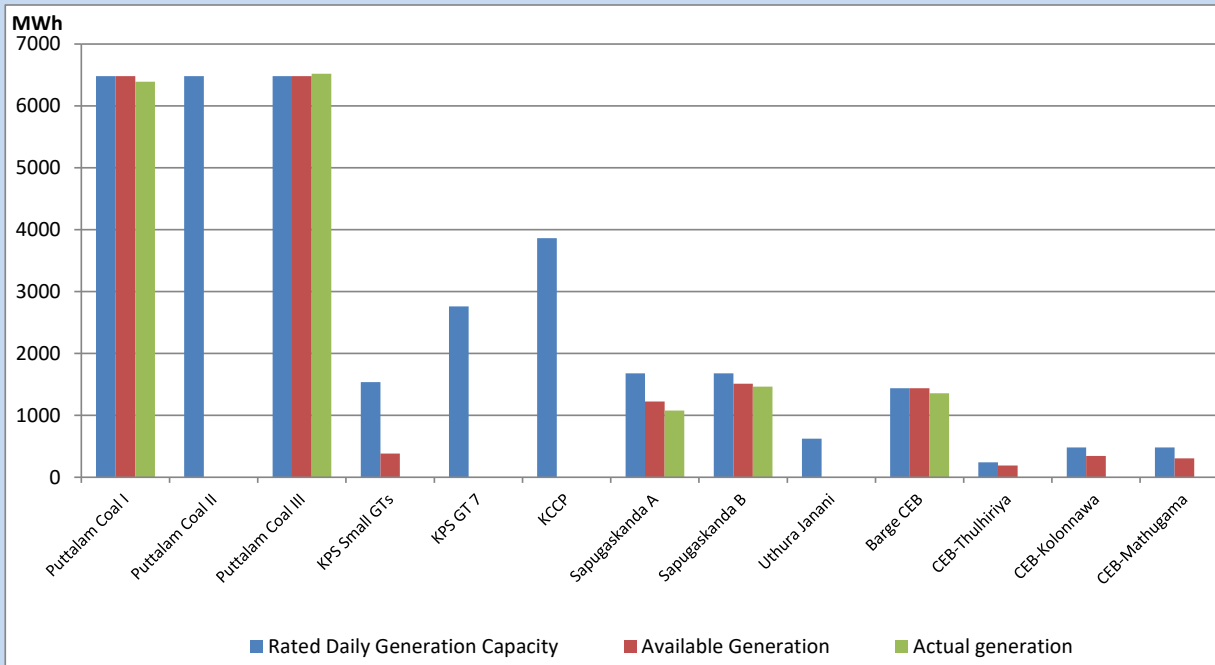
Category	Dispatch (GWh)	Percentage
CEB Hydro	370.65	37.14%
CEB Thermal Oil	97.56	9.78%
CEB Coal	327.47	32.82%
IPP Thermal	86.24	8.64%
SPP Wind	32.21	3.23%
CEB Wind	33.09	3.32%
SPP Solar	6.66	0.67%
SPP Solid Waste	5.21	0.52%
Mini Hydro	38.81	3.89%
Total	997.90	

For Current Year

Category	Dispatch (GWh)	Percentage
CEB Hydro	2,422.0	28.48%
CEB Thermal Oil	1,037.7	12.20%
CEB Coal	3,355.7	39.45%
IPP Thermal	957.8	11.26%
SPP Wind	182.1	2.14%
CEB Wind	199.0	2.34%
SPP Solar	53.1	0.62%
SPP Solid Waste	43.7	0.51%
Mini Hydro	254.4	2.99%
Total	8,505.3	

CEB owned Thermal Plant Dispatch

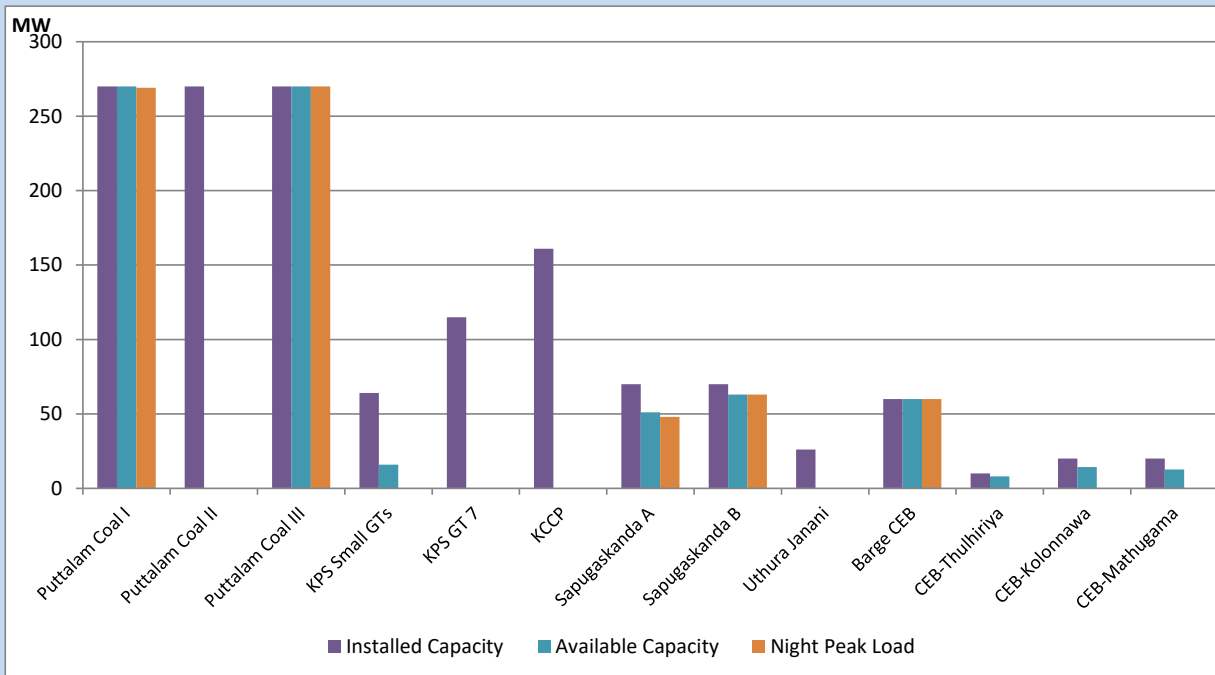
July 26, 2022



Available Generation is estimated based on plant availability at 6.00am on

July 27, 2022

CEB owned Thermal Plant Loading at the Night Peak



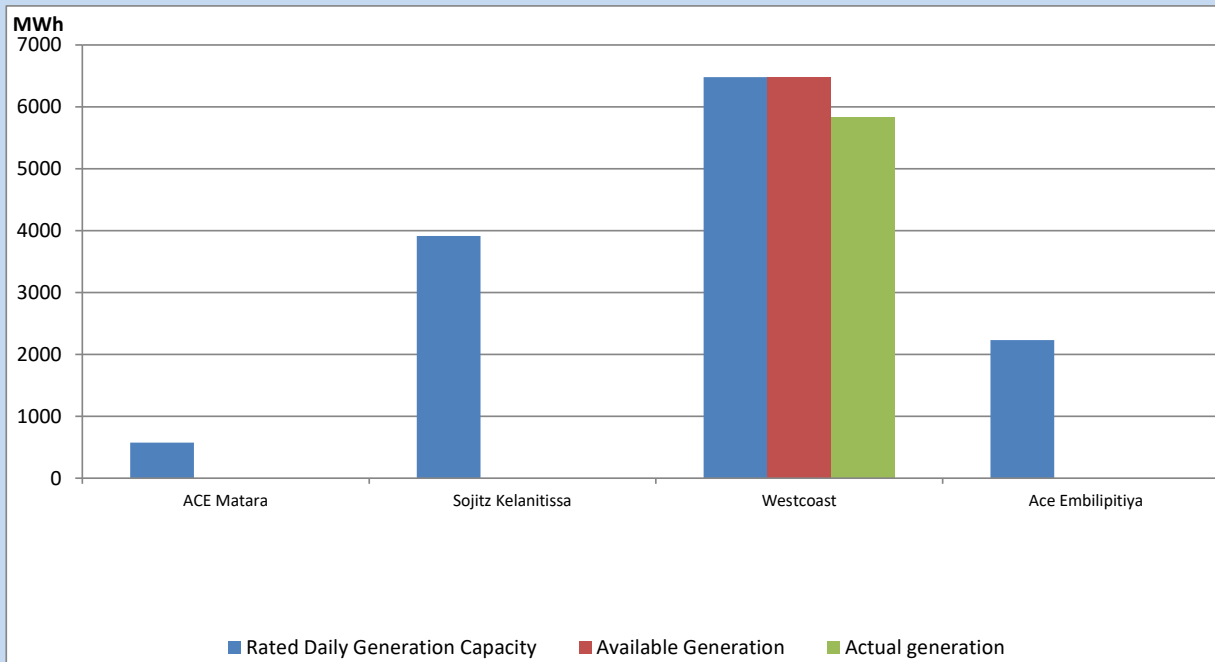
Note- Plant availability is recorded at 6.00 am on

July 27, 2022

IPP owned Thermal Plant Dispatch

July 26, 2022

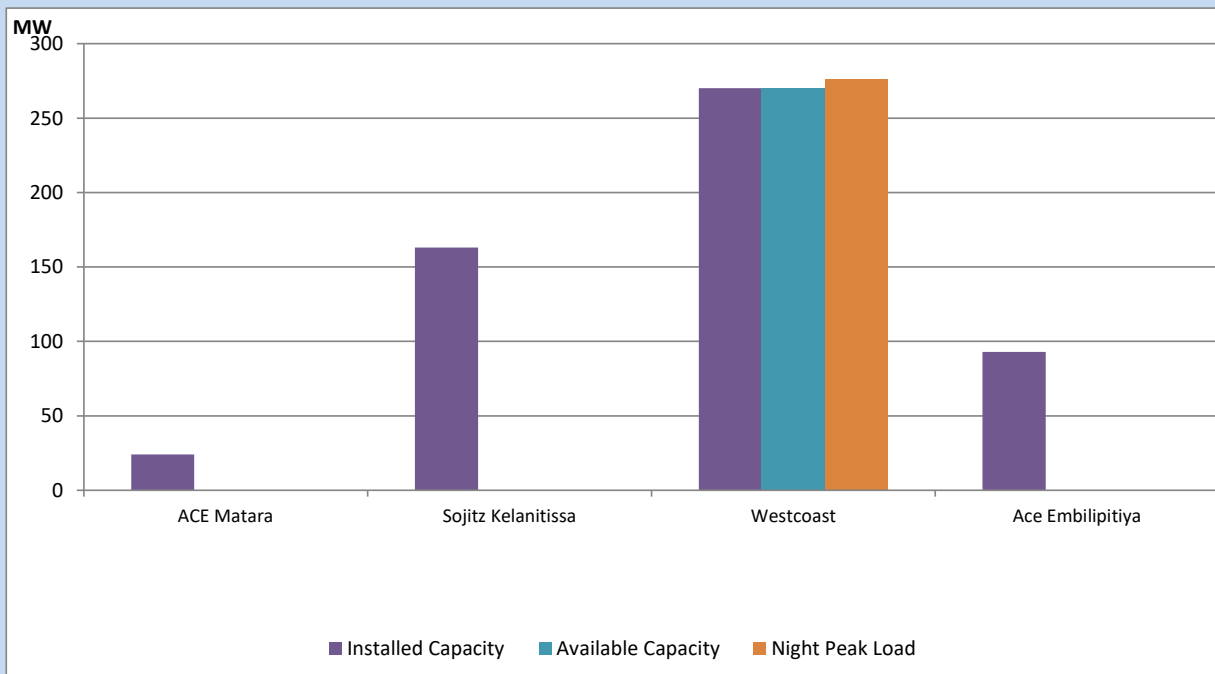
Asia Power, V Power Pallekale, Vpower Galle, V Power Horana, Vpower Hambantota, Vpower Valachchena and Altaqa Mahiyanganaya are not available due to expiration of PPAs



Available Generation is estimated based on plant availability at 6.00am on

July 27, 2022

IPP owned Thermal Plant Loading at the Night Peak

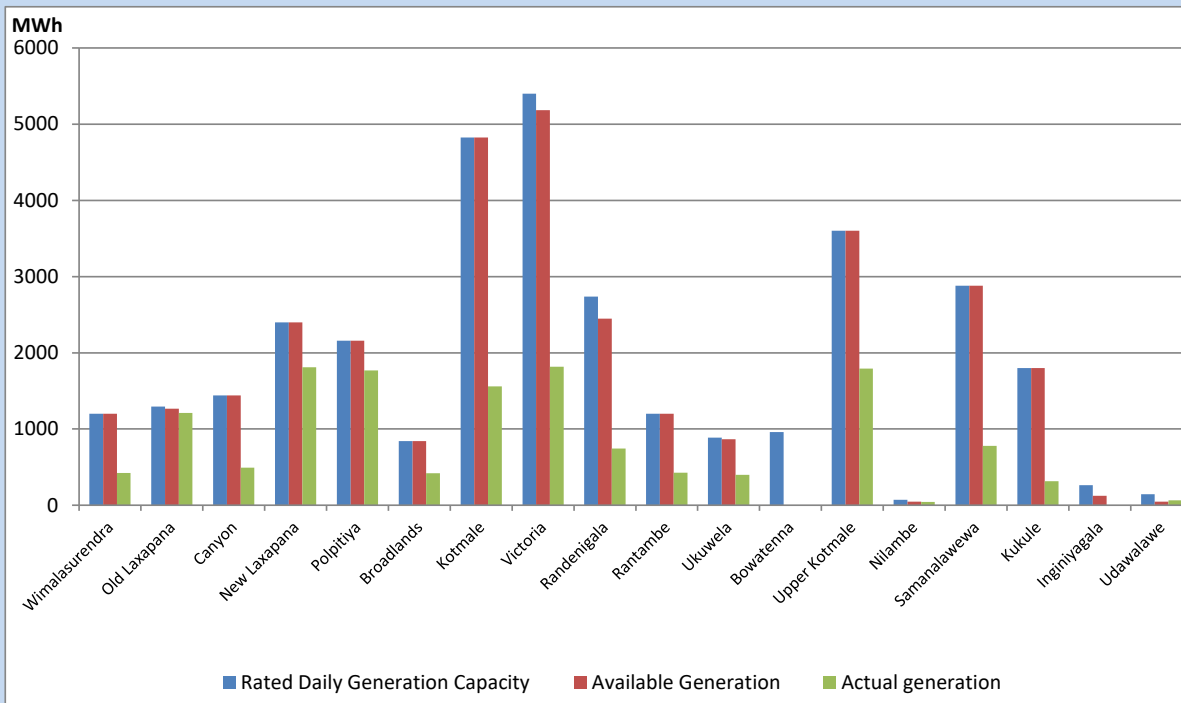


Note- Plant availability is recorded at 6.00 am on

July 27, 2022

Major Hydro Plant Dispatch

July 26, 2022

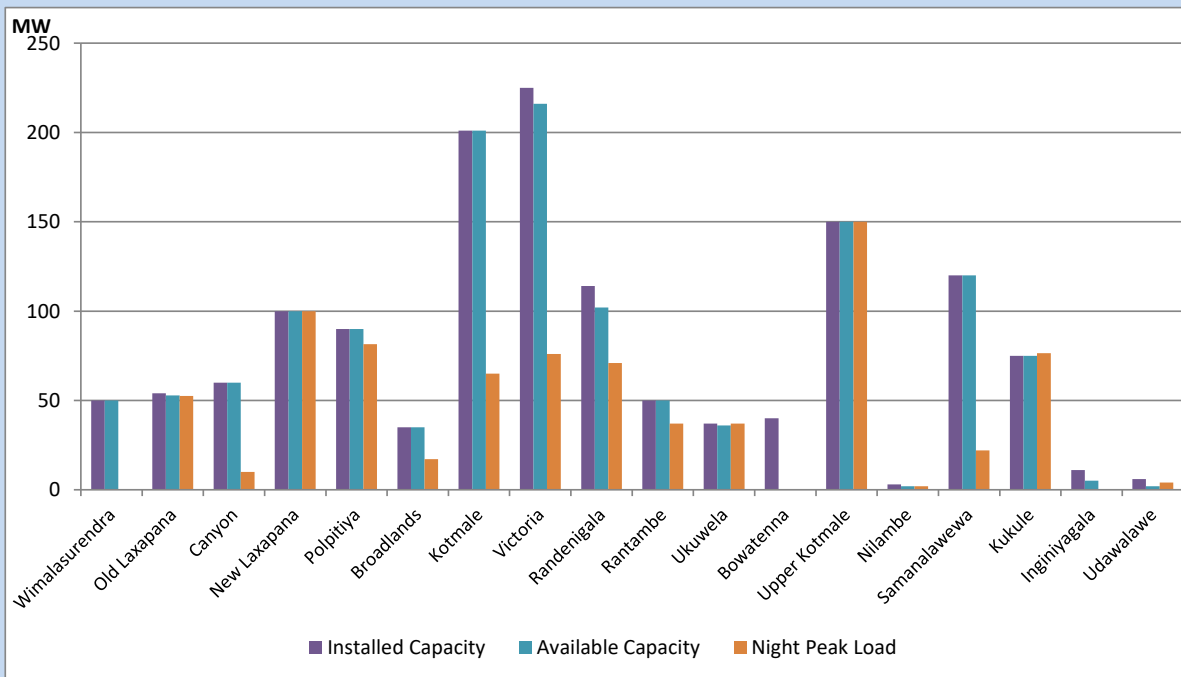


Available Generation is estimated based on plant availability at 6.00am on
Broadlands power plant is operating in the Commissioning Stage

July 27, 2022

Major Hydro Plant Loading at Night Peak

July 26, 2022



Note- Plant availability is recorded at 6.00 am on
Broadlands power plant is operating in the Commissioning Stage

July 27, 2022

Summary of Major Plant performance

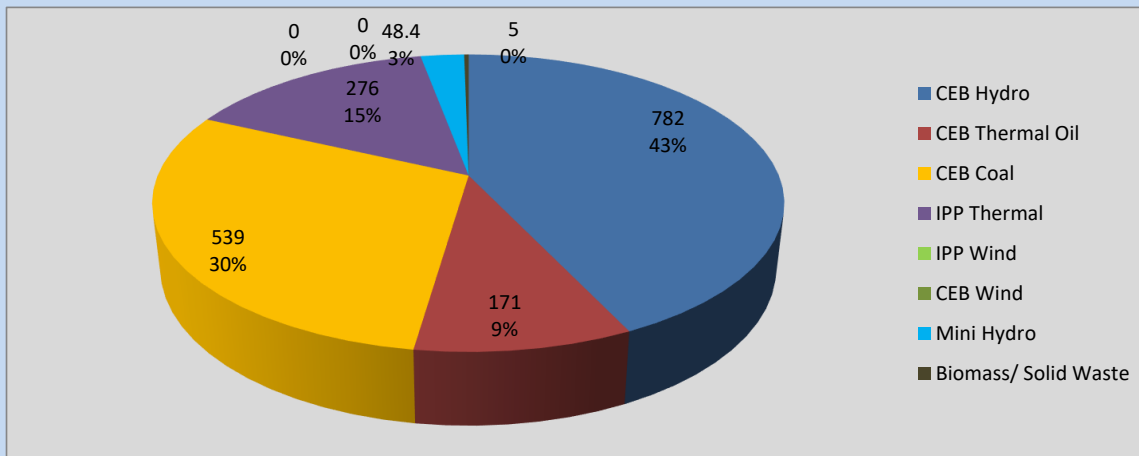
Plant	Installed Capacity	Plant Availability	Night peak Load	Plant Dispatch
	(MW)	(MW)	(MW)	(MWh)
Wimalasurendra	50	50	0	423
Old Laxapana	54	53	53	1,211
Canyon	60	60	10	492
New Laxapana	100	100	100	1,809
Polpitiya	90	90	82	1,768
Broadlands	35	35	17	419
Kotmale	201	201	65	1,560
Victoria	225	216	76	1,818
Randenigala	114	102	71	743
Rantambe	50	50	37	428
Ukuwela	37	36	37	397
Bowatenna	40	0	0	0
Upper Kotmale	150	150	150	1,793
Nilambe	3	2	2	43
Samanalawewa	120	120	22	779
Kukule	75	75	77	314
Inginiyagala	11	5	0	0
Udawalawe	6	2	4	64
Puttalam Coal I	270	270	269	6,391
Puttalam Coal II	270	0	0	0
Puttalam Coal III	270	270	270	6,518
KPS Small GTs	64	16	0	0
KPS GT 7	115	0	0	0
KCCP	161	0	0	0
Sapugaskanda A	70	51	48	1,079
Sapugaskanda B	70	63	63	1,464
Uthura Janani	26	0	0	0
Barge CEB	60	60	60	1,357
CEB-Thulhiriya	10	8	0	0
CEB-Kolonnawa	20	14	0	0
CEB-Mathugama	20	13	0	0
ACE Matara	24	0	0	0
Sojitz Kelanitissa	163	0	0	0
West Coast	270	270	276	5,826
ACE Embilipitiya	93	0	0	0
Total	3,397	2,382	1,841	38,481

Plant availability is the availability recorded at 6 am on

July 27, 2022

Contribution to the Night Peak in MW

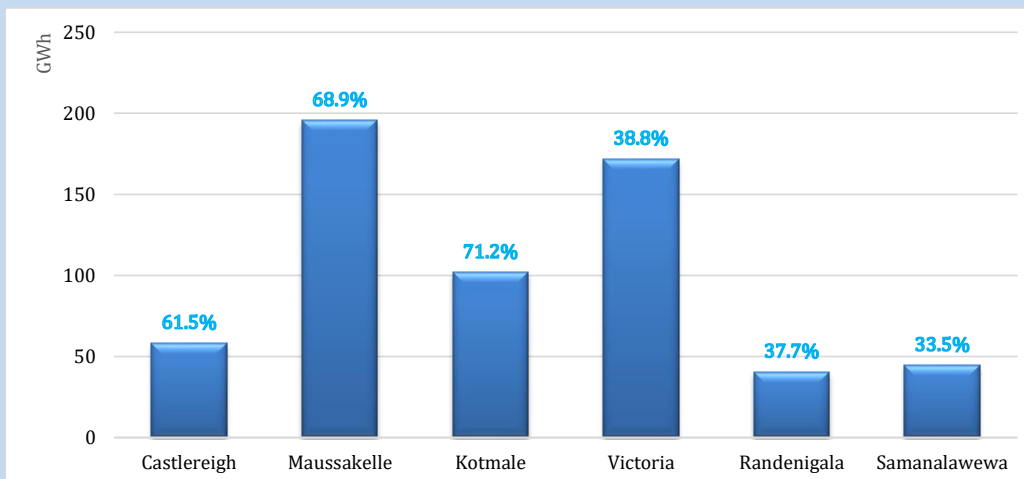
July 26, 2022



Night Peak*	1,821.1 MW
Day Peak	1,878.2 MW
Minimum Demand	1,251.4 MW

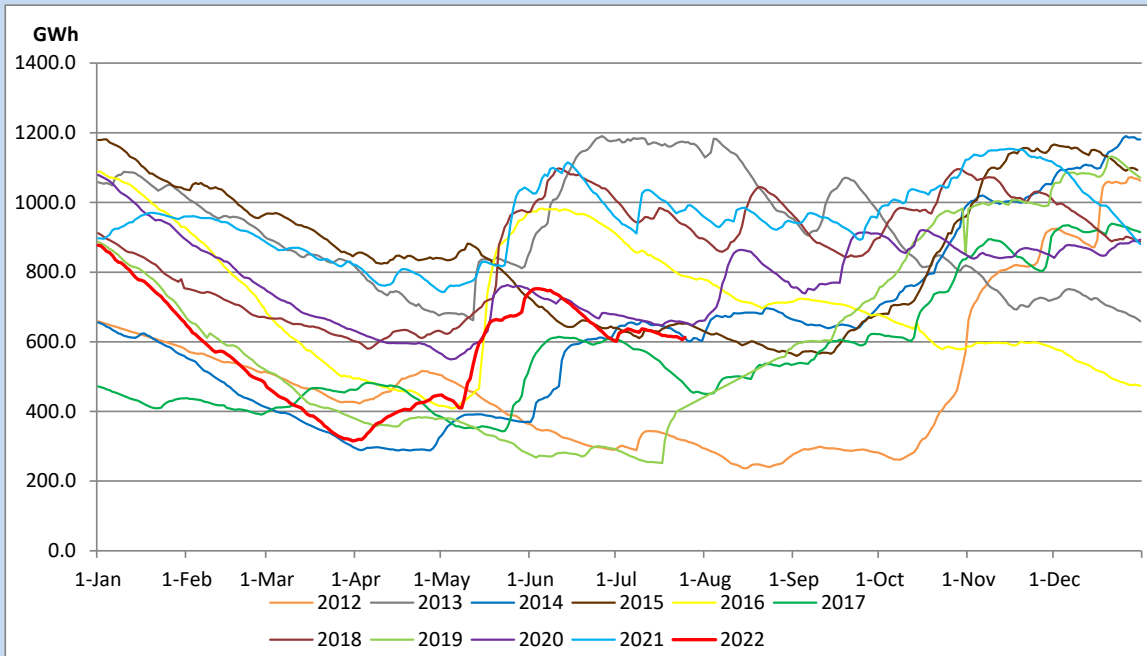
Above figures are excluding contribution from Roof Top Solar, 1MW solar, certain Wind plants and Mini Hydro plants

Reservoir Levels - as at 06.00 Hr on July 27, 2022

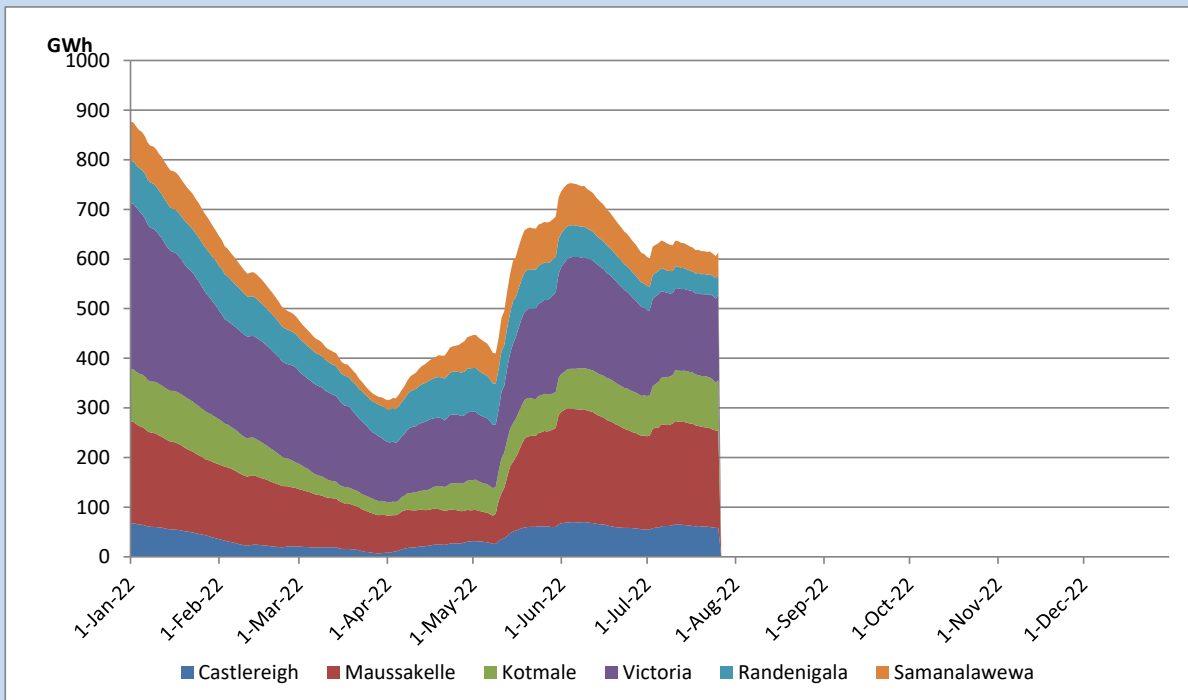


Total Reservoir Level	613 GWh
% of Total capacity	50.8%

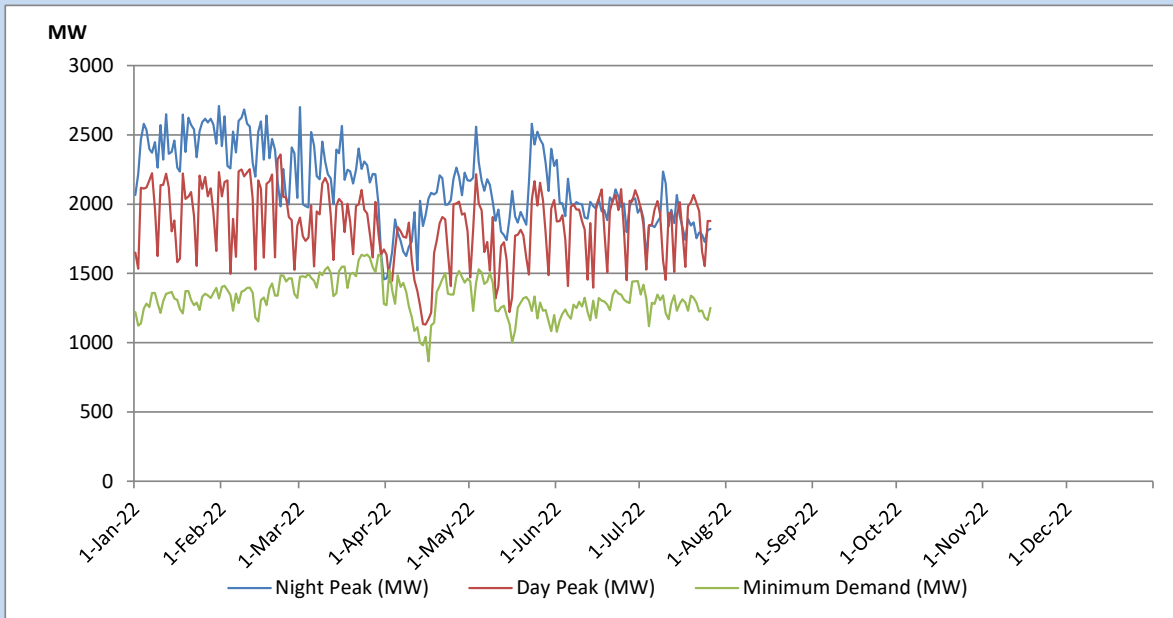
Comparison of Total Reservoir Storage Levels with Past Years



Variation of Major Hydro Reservoir Levels in the current year (GWh)



Variation of Demand during the current year

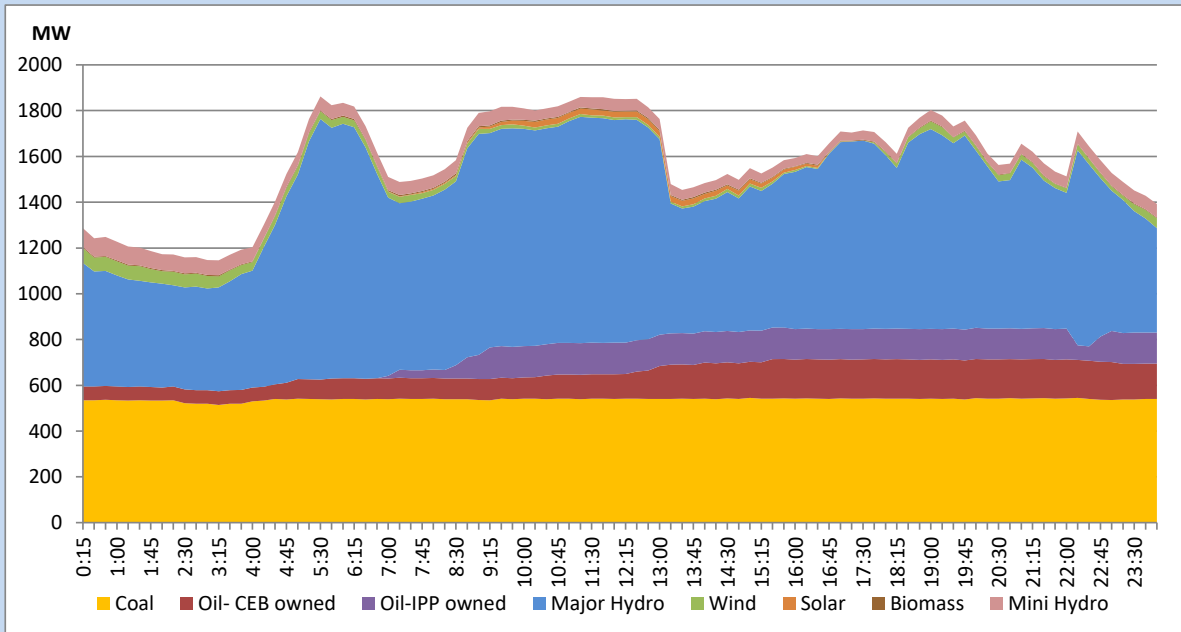


The above figures are excluding contribution from Roof Top Solar, 1MW solar, certain Wind plants and Mini Hydro plants

Daily Load Curve of the Previous day

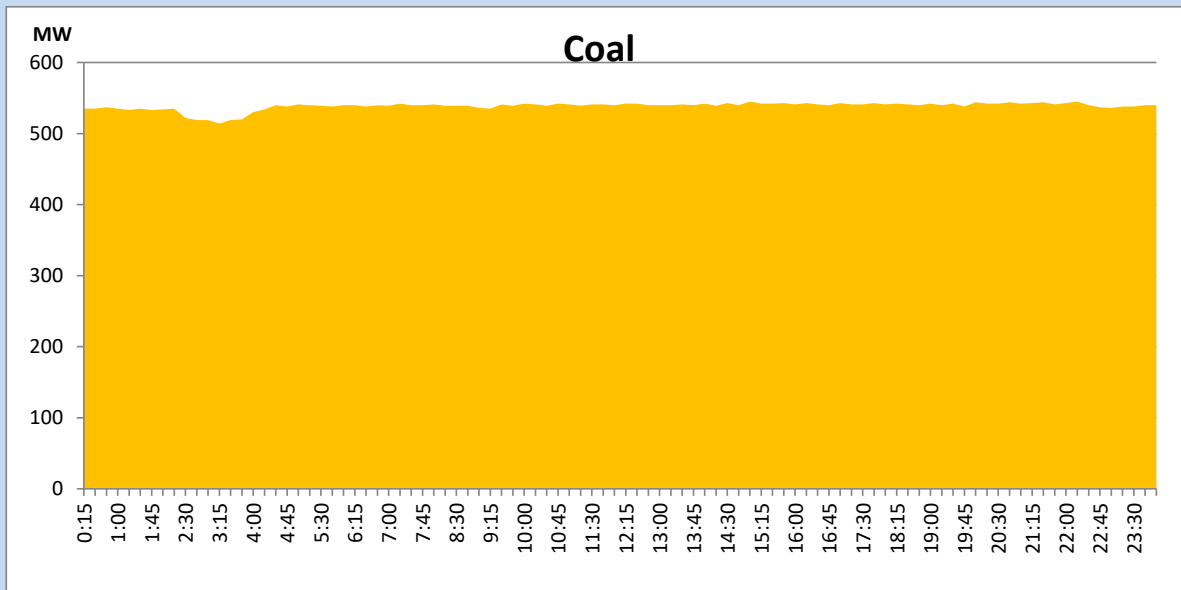
July 25, 2022

Solar and wind data is based on Telemetered Power Stations only



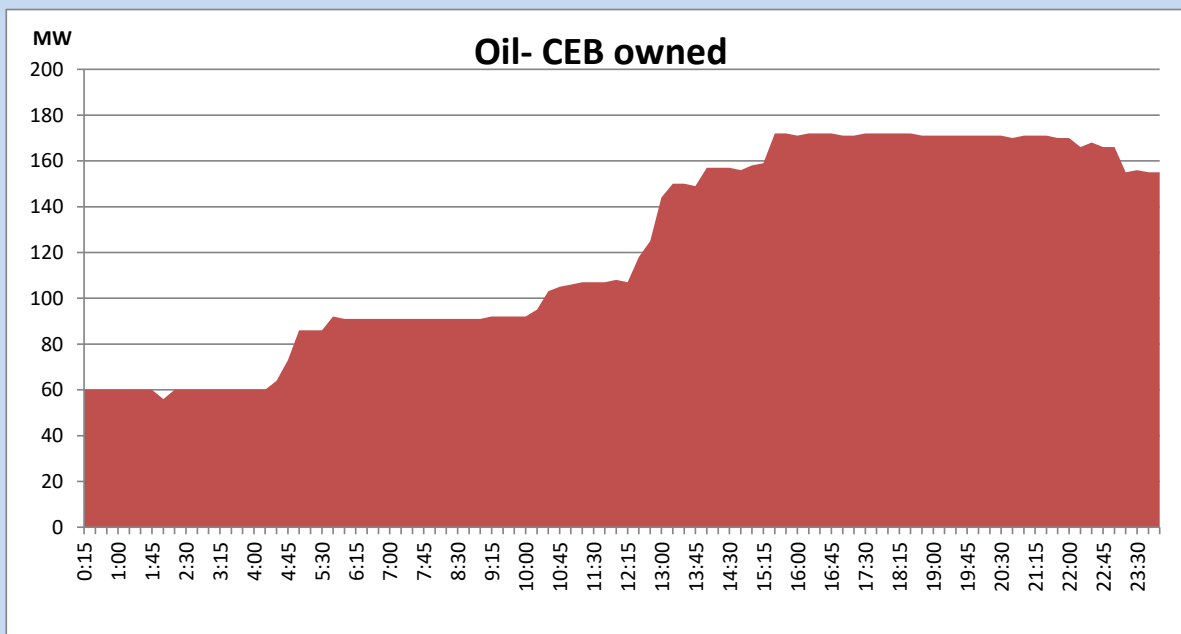
Coal Generation during the Previous day

July 25, 2022



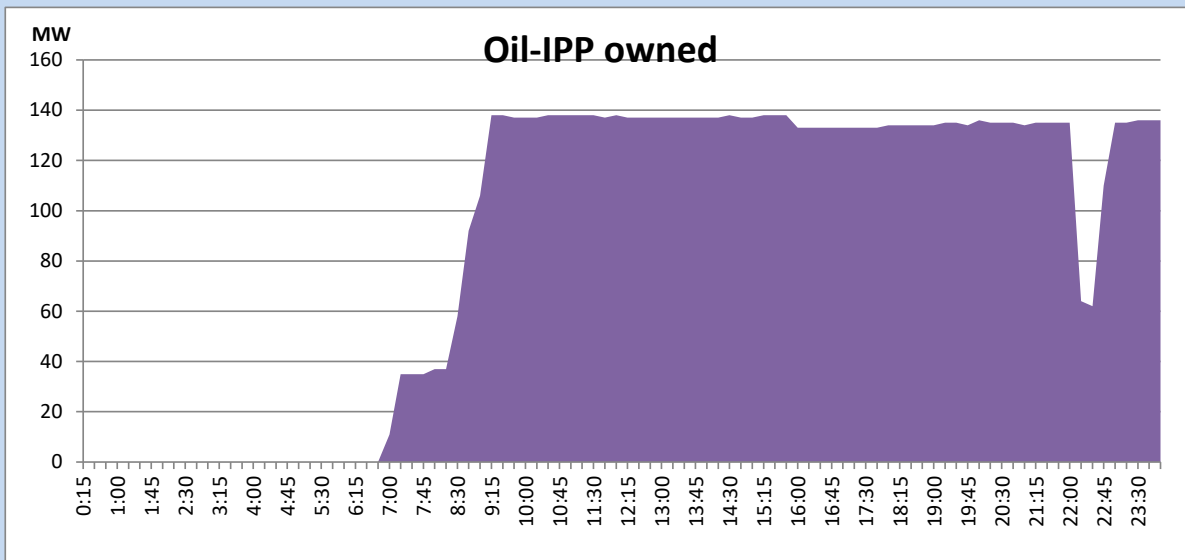
CEB Oil Plant Generation during the Previous day

July 25, 2022



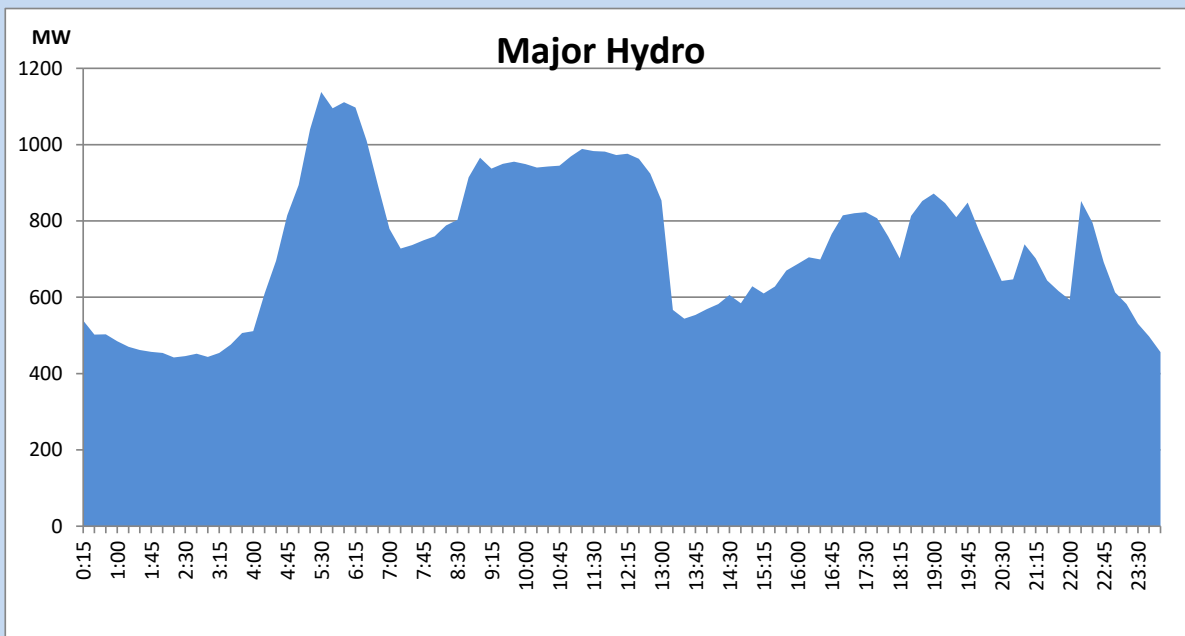
IPP Oil Plant Generation during the Previous day

July 25, 2022



Major Hydro Generation during the Previous day

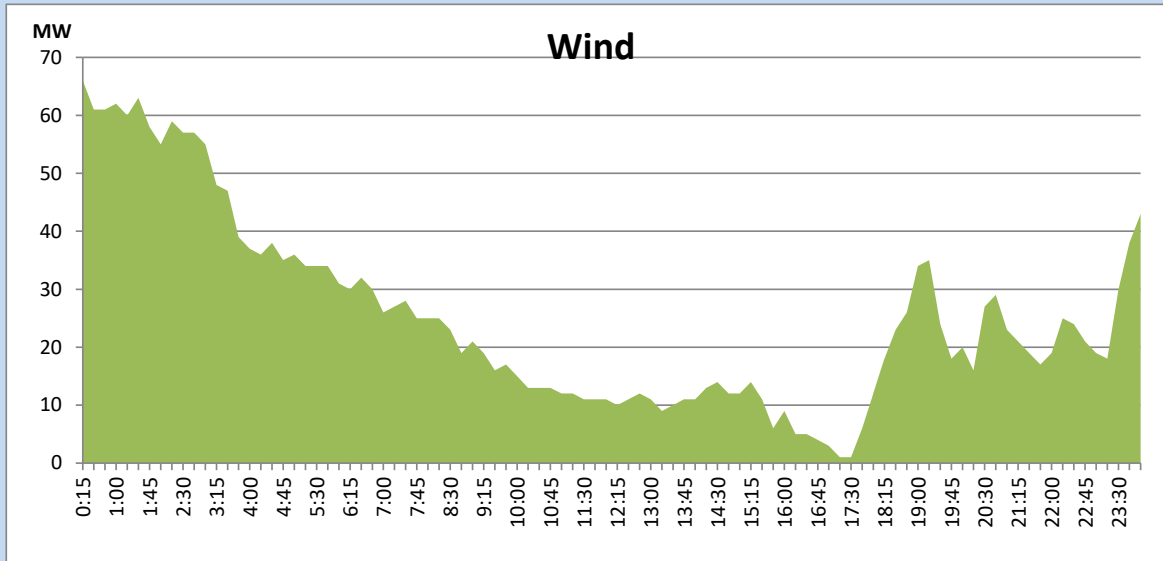
July 25, 2022



Wind Generation during the Previous day

July 25, 2022

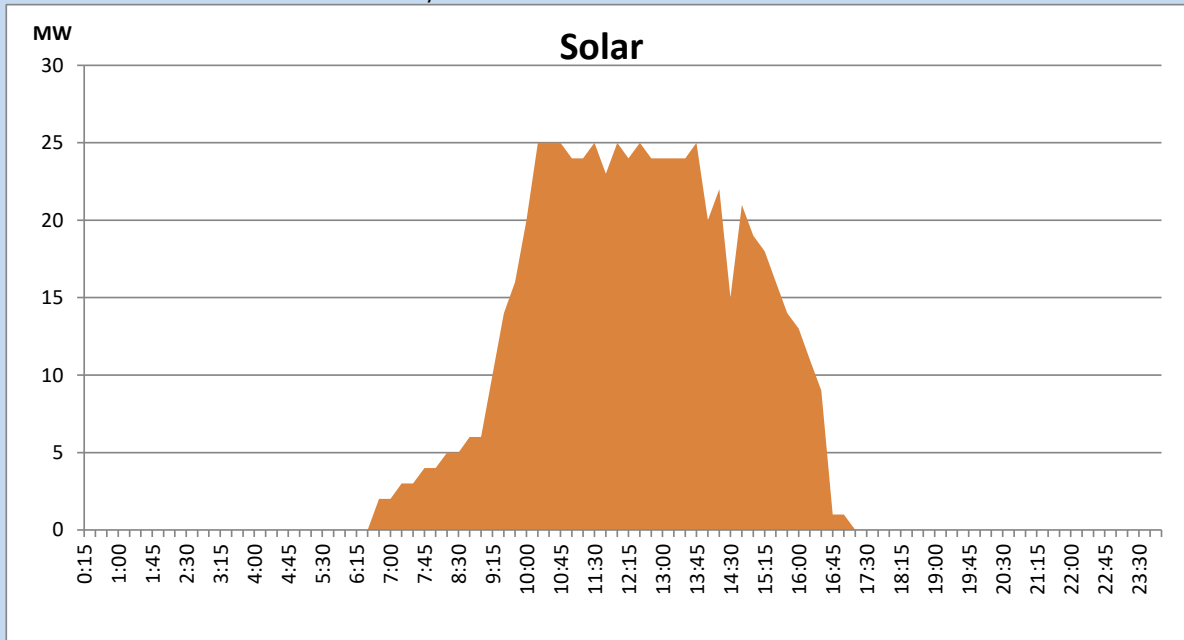
Based on Telemetered Power Stations only



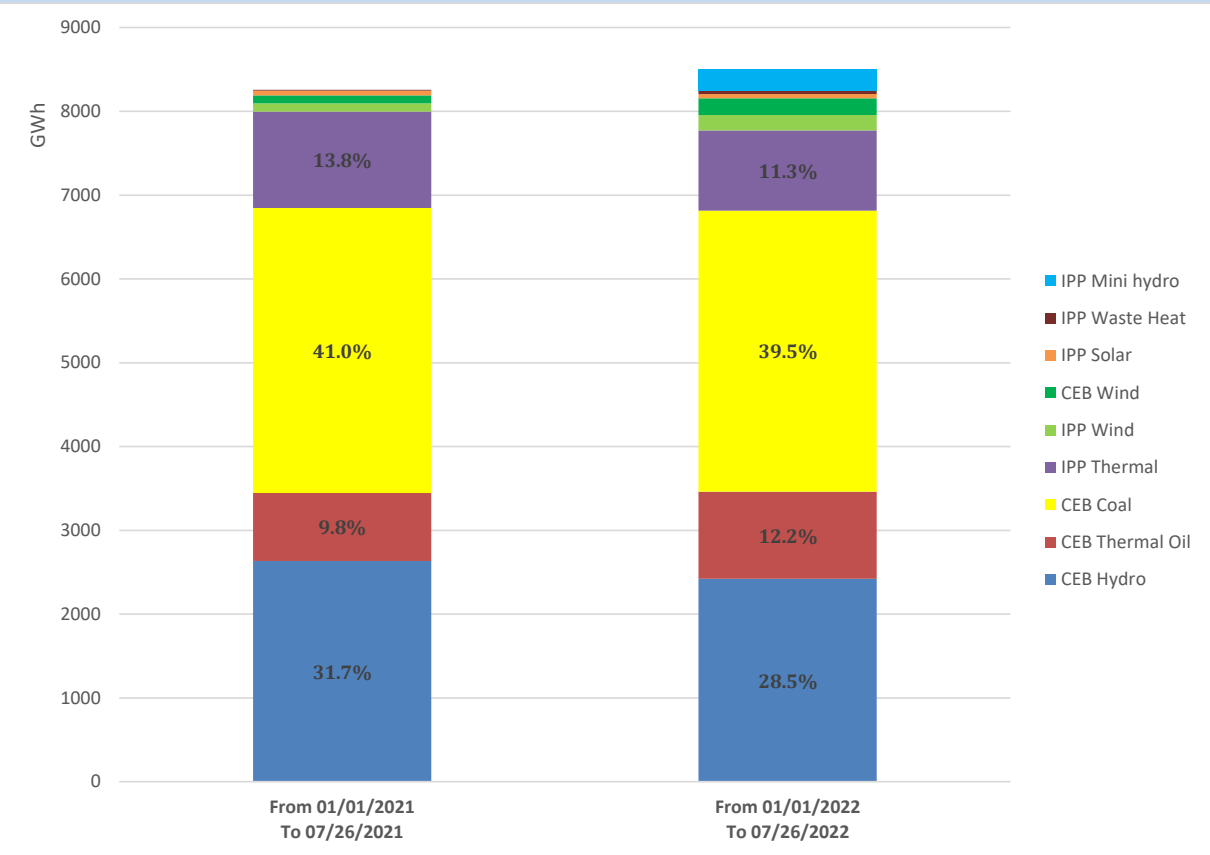
Solar Generation during the Previous day

July 25, 2022

Based on Telemetered Power Stations only



Cumulative Dispatch Comparison with Last Year



Thermal Plant Fuel types

Power Station	Primary Fuel
CEB Thermal	
Sapugaskanda 1	Heavy Fuel
Sapugaskanda 2	Heavy Fuel
Kelanitissa Small Gas Turbines	Auto Diesel
GT 7 - Kelanitissa	Auto Diesel
Kelanitissa CCY	Naphtha or Diesel
Lakvijaya 1	Coal
Lakvijaya 2	Coal
Lakvijaya 3	Coal
Uthuru Janani	Heavy Fuel
Barge CEB	Heavy Fuel

Power Station	Primary Fuel
Private Thermal	
Sojitz - Kelanitissa	Auto Diesel
West Coast	Auto Diesel / Heavy Fuel
ACE Matara	Heavy Fuel
ACE Embilipitiya	Heavy Fuel

Major Incidents during the day -as reported by CEB morning of

July 27, 2022

- 1) Rotational manual load shedding was carried out from 05:30 hrs to 08:30 hrs and 13:00 hrs to 22:00 hrs.
- 2) Valaichchenai- New Habarana cct tripped and auto-reclosed at 6:30 hrs due to the operation of distance protection.
- 3) Padukka-New Polpitiya cct 02 tripped and auto-reclosed from Padukka end at 12:52 hrs due to the operation of differential protection.
- 4) Kukule both m/cs deloaded and stopped automatically at 20:19 hrs due to a head race intake gate alarm. Both m/cs made available at 22:58 hrs.