

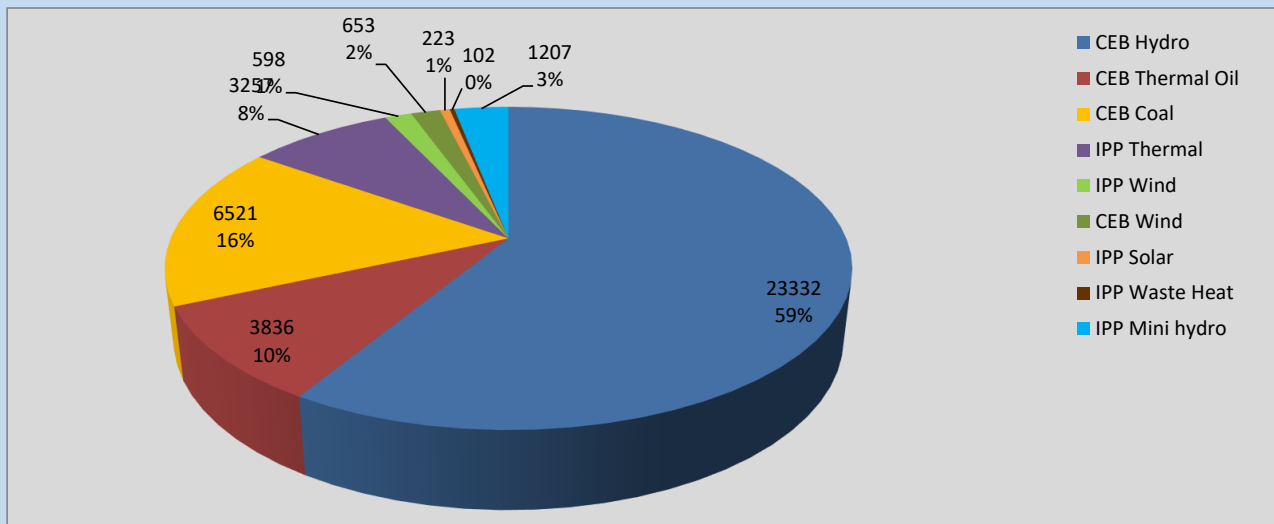
Generation and Reservoirs Statistics

August 25, 2022



PUBLIC UTILITIES COMMISSION OF SRI LANKA

Daily Generation Mix in MWh



Total Generation 39,729 MWh

Note: Above data is excluding contribution from Roof Top Solar, 1MW Solar and certain Mini Hydro plants

Cumulative Dispatch

Note: Following data is Excluding contribution from Roof Top Solar, 1MW solar and Mini Hydro plants

For Current Month

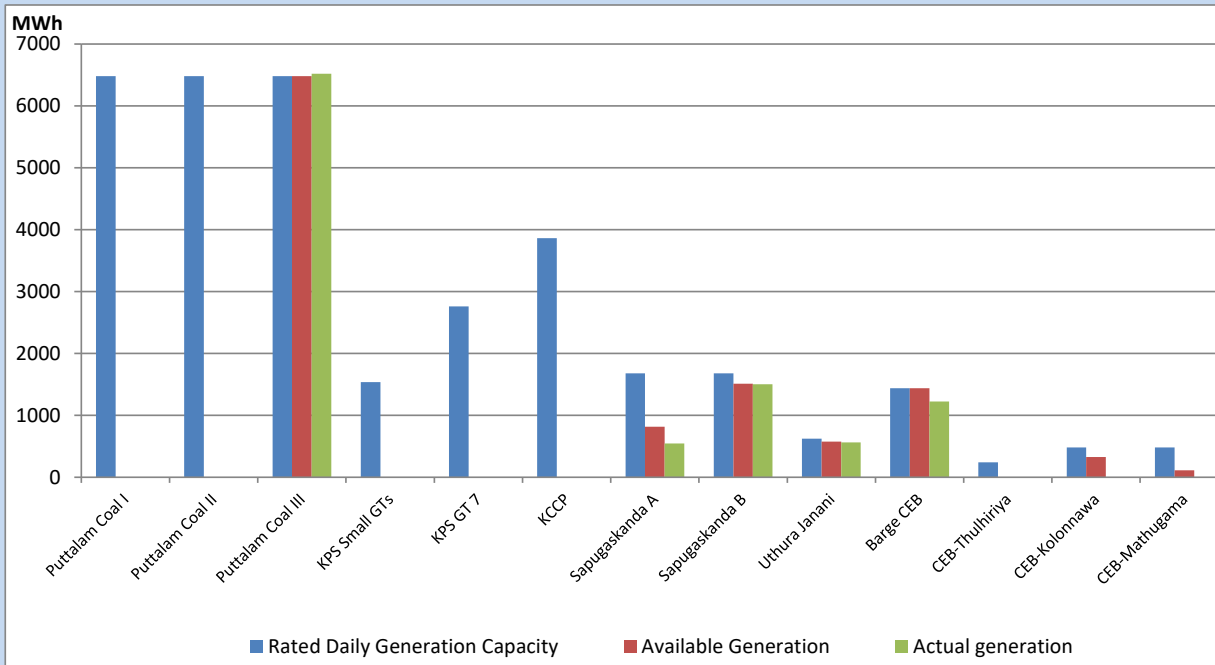
Category	Dispatch (GWh)	Percentage
CEB Hydro	514.46	52.93%
CEB Thermal Oil	47.62	4.90%
CEB Coal	226.96	23.35%
IPP Thermal	49.73	5.12%
SPP Wind	42.60	4.38%
CEB Wind	40.08	4.12%
SPP Solar	6.92	0.71%
SPP Solid Waste	4.03	0.41%
Mini Hydro	39.58	4.07%
Total	971.98	

For Current Year

Category	Dispatch (GWh)	Percentage
CEB Hydro	3,012.6	31.18%
CEB Thermal Oil	1,103.0	11.42%
CEB Coal	3,646.6	37.74%
IPP Thermal	1,022.2	10.58%
SPP Wind	226.6	2.34%
CEB Wind	241.3	2.50%
SPP Solar	60.9	0.63%
SPP Solid Waste	48.1	0.50%
Mini Hydro	300.6	3.11%
Total	9,661.6	

CEB owned Thermal Plant Dispatch

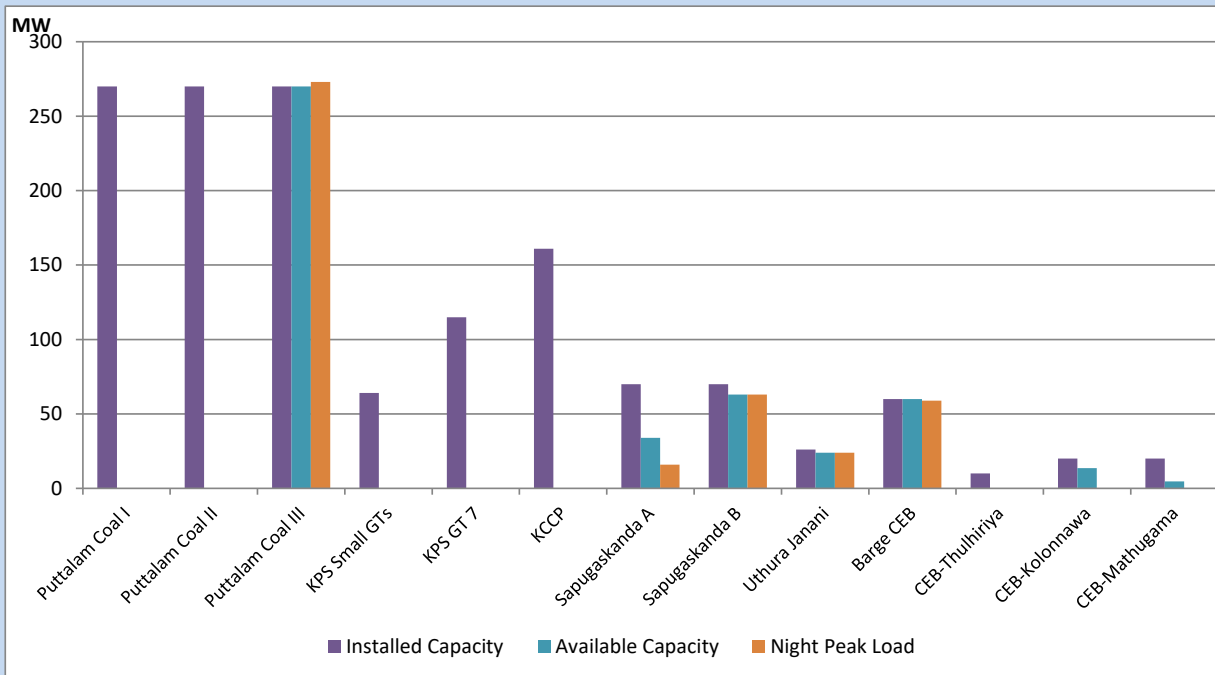
August 25, 2022



Available Generation is estimated based on plant availability at 6.00am on

August 26, 2022

CEB owned Thermal Plant Loading at the Night Peak



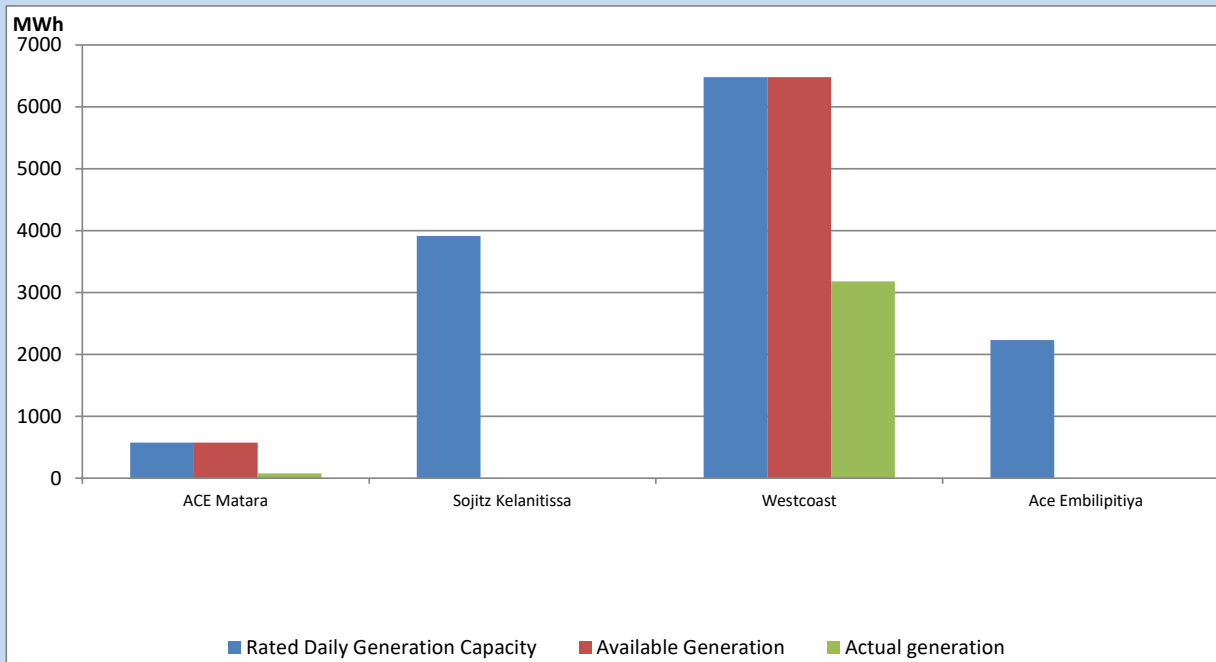
Note- Plant availability is recorded at 6.00 am on

August 26, 2022

IPP owned Thermal Plant Dispatch

August 25, 2022

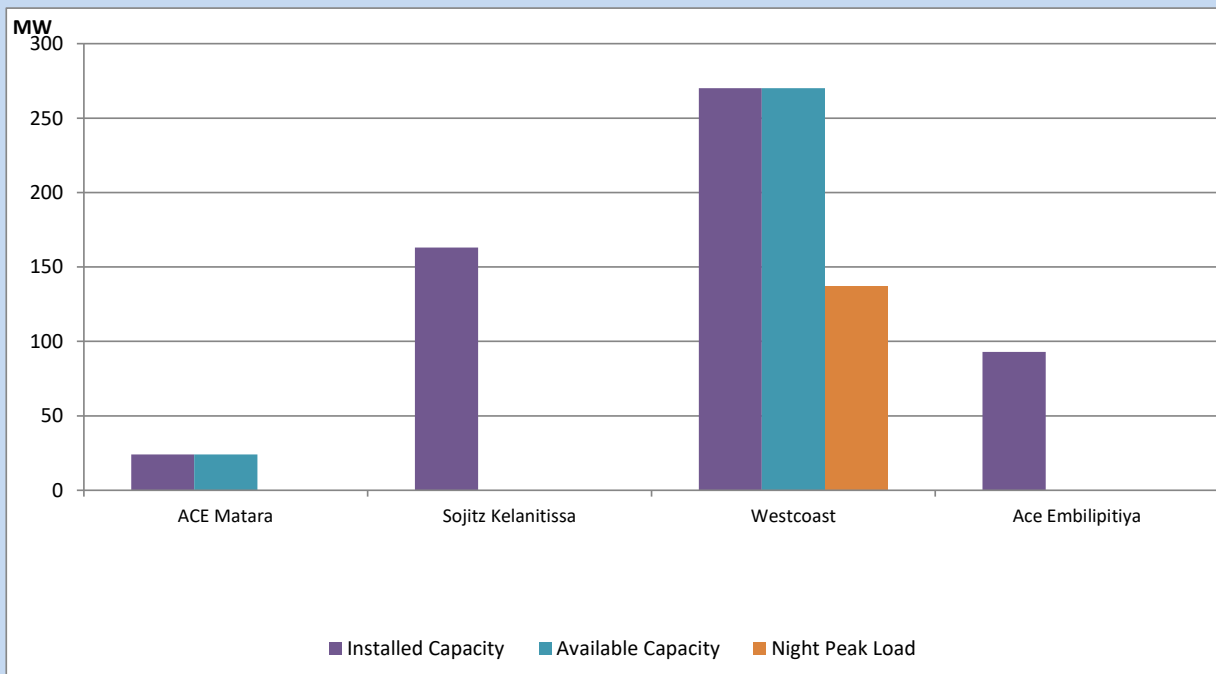
Asia Power, V Power Pallekale, Vpower Galle, V Power Horana, Vpower Hambantota, Vpower Valachchena and Altaqa Mahiyanganaya are not available due to expiration of PPAs



Available Generation is estimated based on plant availability at 6.00am on

August 26, 2022

IPP owned Thermal Plant Loading at the Night Peak

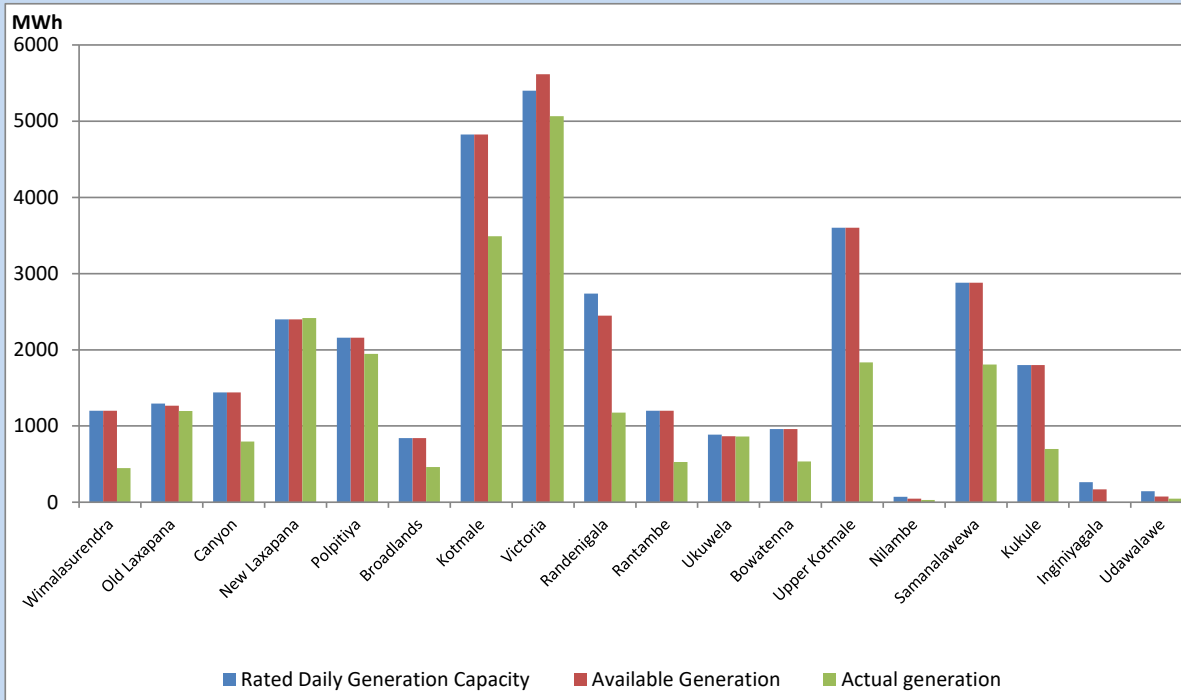


Note- Plant availability is recorded at 6.00 am on

August 26, 2022

Major Hydro Plant Dispatch

August 25, 2022

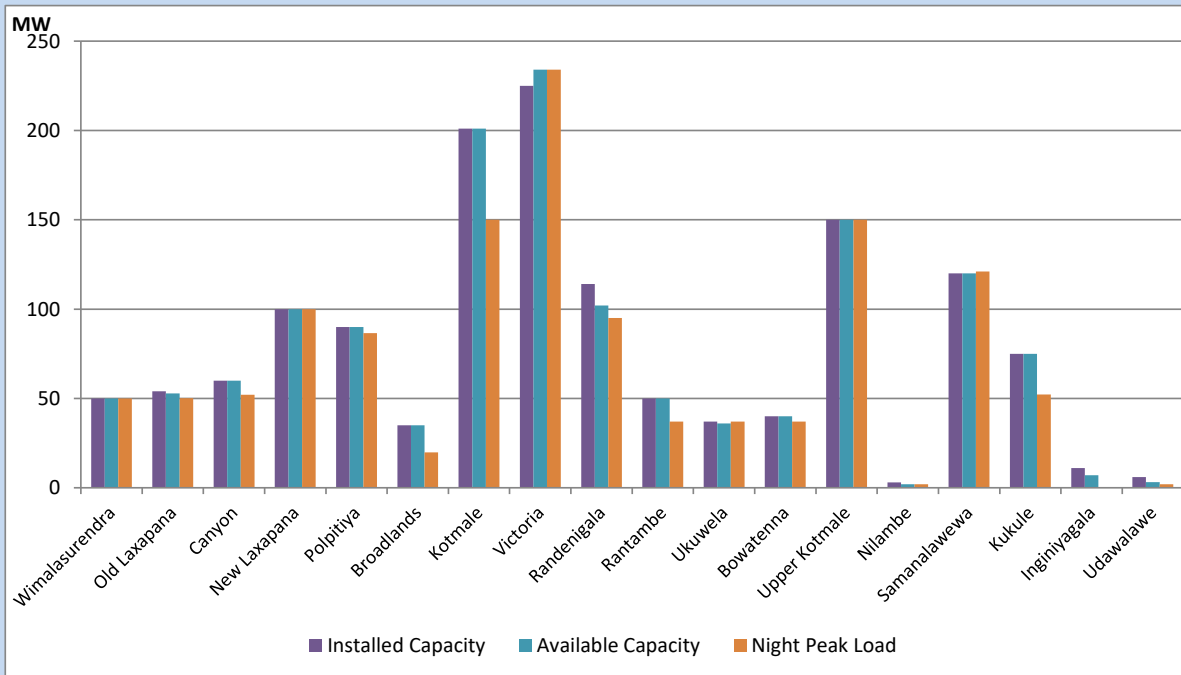


Available Generation is estimated based on plant availability at 6.00am on August 26, 2022
 Broadlands power plant is operating in the Commissioning Stage

August 26, 2022

Major Hydro Plant Loading at Night Peak

August 25, 2022



Note- Plant availability is recorded at 6.00 am on August 26, 2022
 Broadlands power plant is operating in the Commissioning Stage

Summary of Major Plant performance

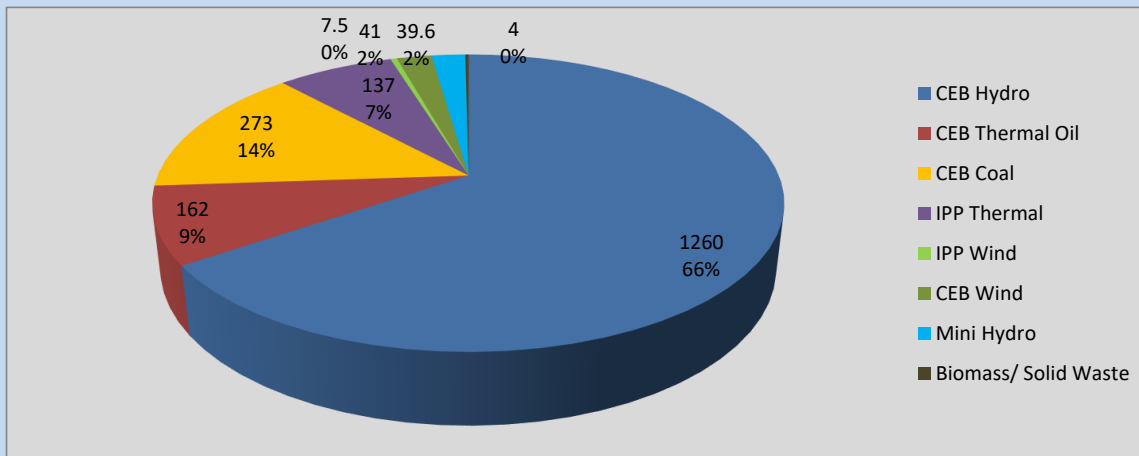
Plant	Installed Capacity	Plant Availability	Night peak Load	Plant Dispatch
	(MW)	(MW)	(MW)	(MWh)
Wimalasurendra	50	50	50	446
Old Laxapana	54	53	50	1,197
Canyon	60	60	52	795
New Laxapana	100	100	100	2,417
Polpitiya	90	90	87	1,947
Broadlands	35	35	20	460
Kotmale	201	201	150	3,490
Victoria	225	234	234	5,064
Randenigala	114	102	95	1,176
Rantambe	50	50	37	529
Ukuwela	37	36	37	863
Bowatenna	40	40	37	533
Upper Kotmale	150	150	150	1,836
Nilambe	3	2	2	30
Samanalawewa	120	120	121	1,805
Kukule	75	75	52	697
Inginiyagala	11	7	0	0
Udawalawe	6	3	2	47
Puttalam Coal I	270	0	0	0
Puttalam Coal II	270	0	0	0
Puttalam Coal III	270	270	273	6,521
KPS Small GTs	64	0	0	0
KPS GT 7	115	0	0	0
KCCP	161	0	0	0
Sapugaskanda A	70	34	16	548
Sapugaskanda B	70	63	63	1,502
Uthura Janani	26	24	24	562
Barge CEB	60	60	59	1,224
CEB-Thulhiriya	10	0	0	0
CEB-Kolonnawa	20	14	0	0
CEB-Mathugama	20	5	0	0
ACE Matara	24	24	0	77
Sojitz Kelanitissa	163	0	0	0
West Coast	270	270	137	3,180
ACE Embilipitiya	93	0	0	0
Total	3,397	2,171	1,940	39,729

Plant availability is the availability recorded at 6 am on

August 26, 2022

Contribution to the Night Peak in MW

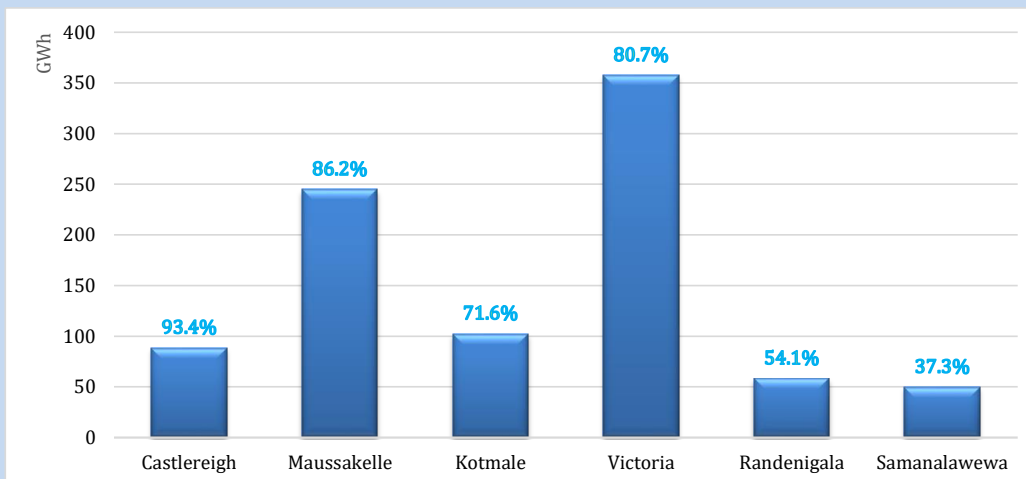
August 25, 2022



Night Peak*	1,923.7 MW
Day Peak	1,948.1 MW
Minimum Demand	1,295.2 MW

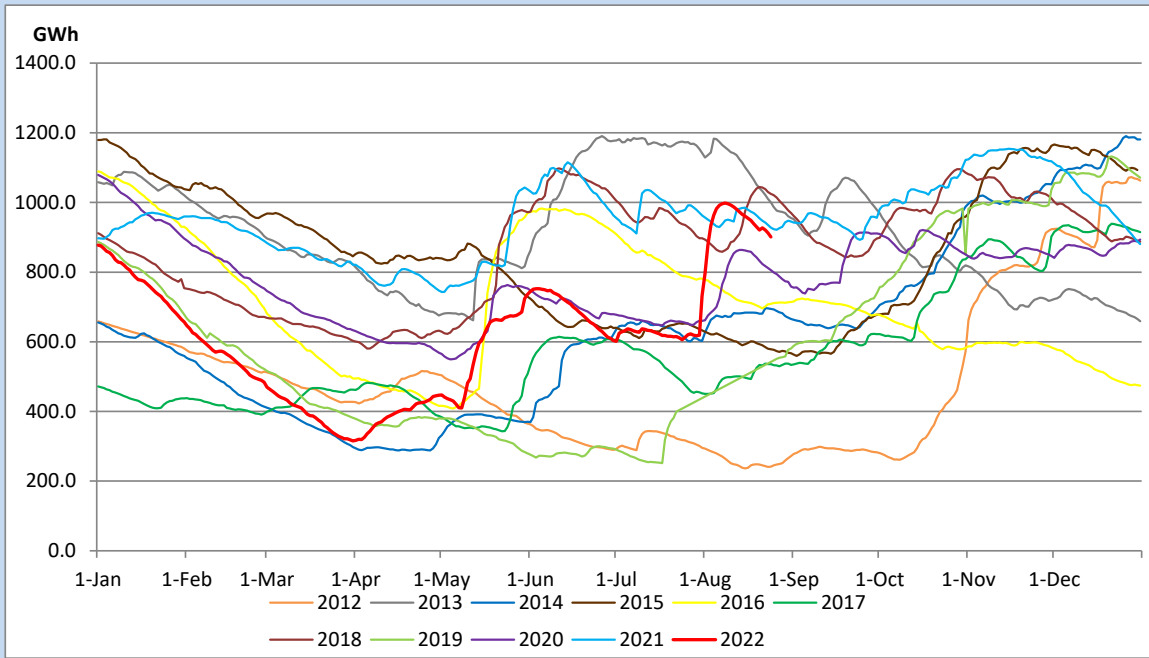
Above figures are excluding contribution from Roof Top Solar, 1MW solar, certain Wind plants and Mini Hydro plants

Reservoir Levels - as at 06.00 Hr on August 26, 2022

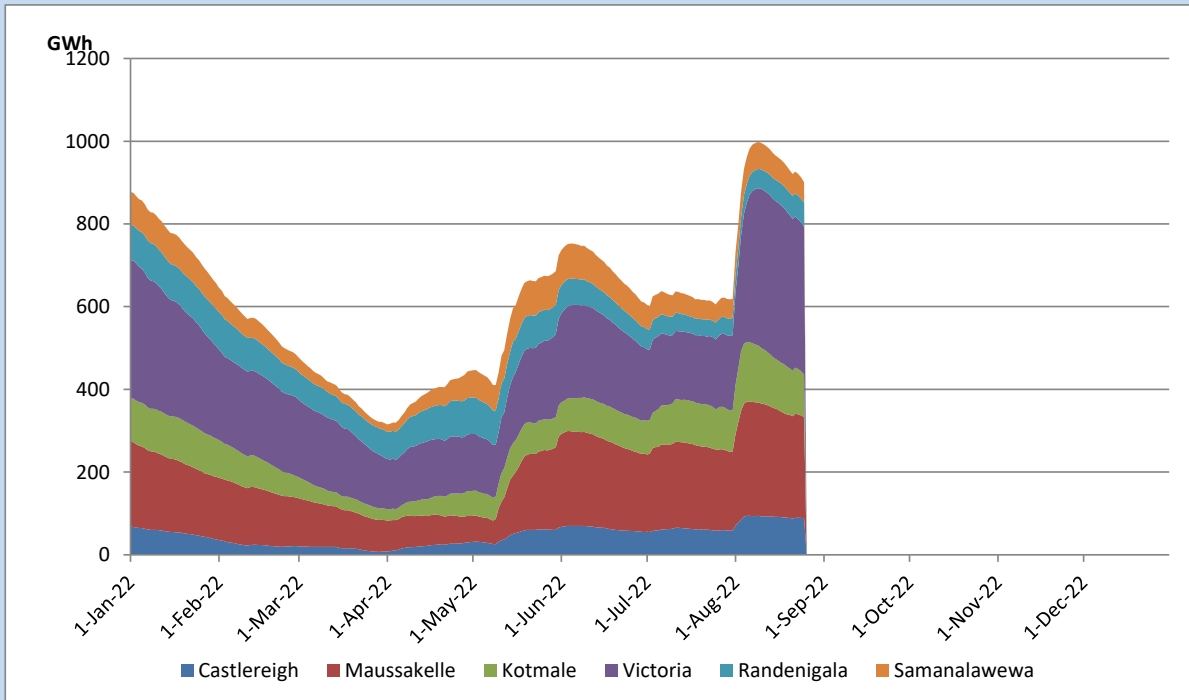


Total Reservoir Level	901.1 GWh
% of Total capacity	74.7%

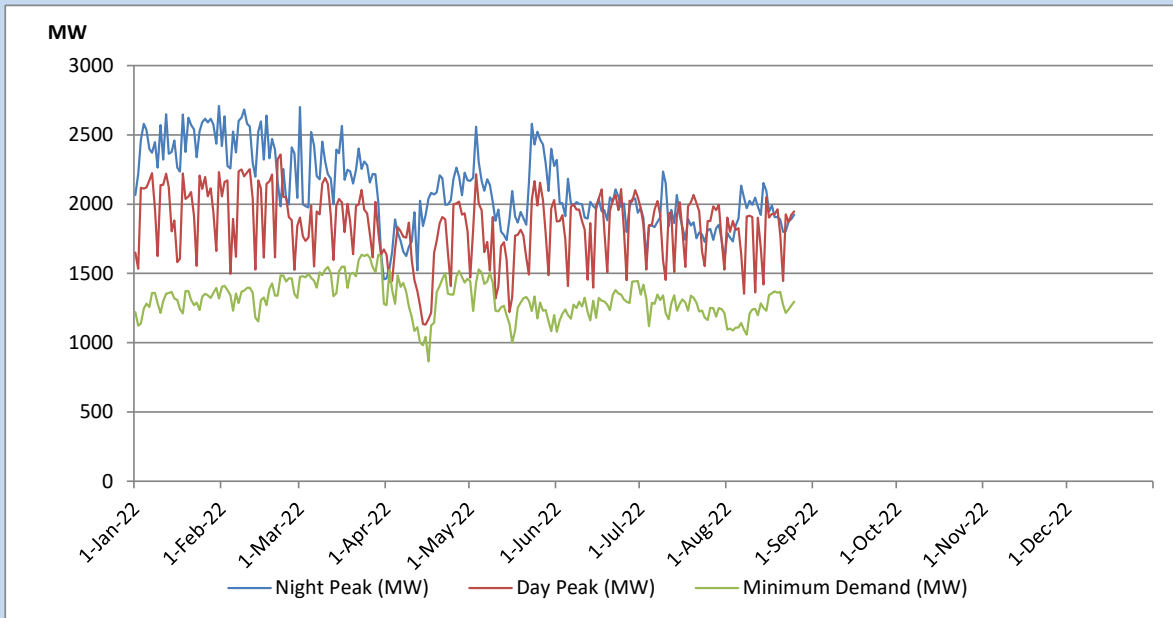
Comparison of Total Reservoir Storage Levels with Past Years



Variation of Major Hydro Reservoir Levels in the current year (GWh)



Variation of Demand during the current year

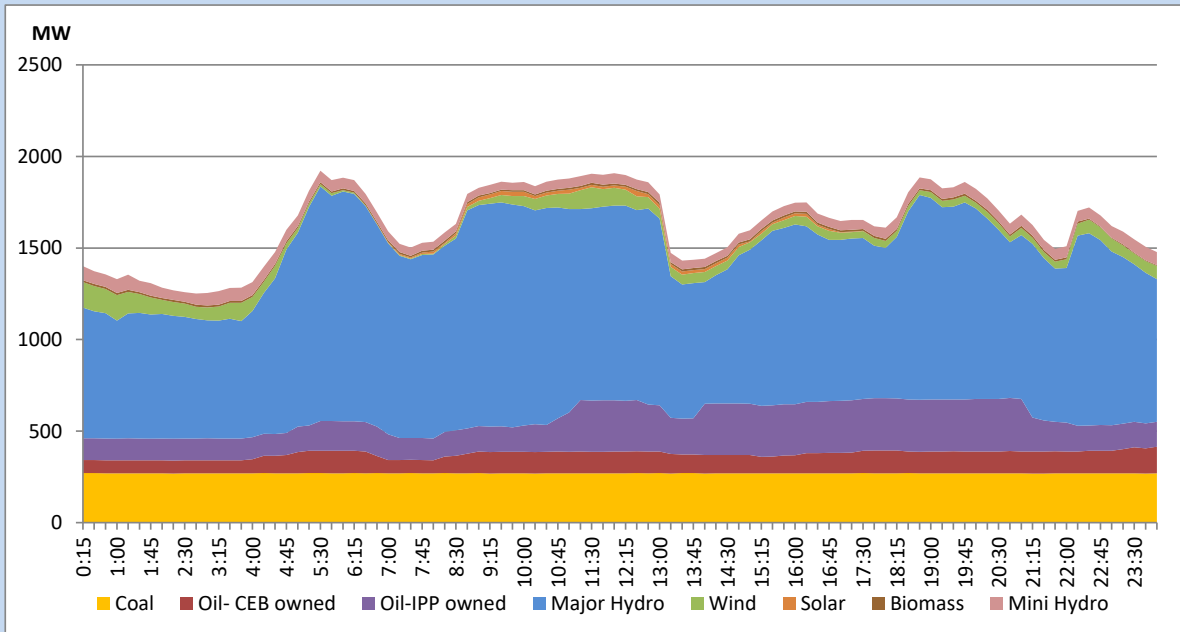


The above figures are excluding contribution from Roof Top Solar, 1MW solar, certain Wind plants and Mini Hydro plants

Daily Load Curve of the Previous day

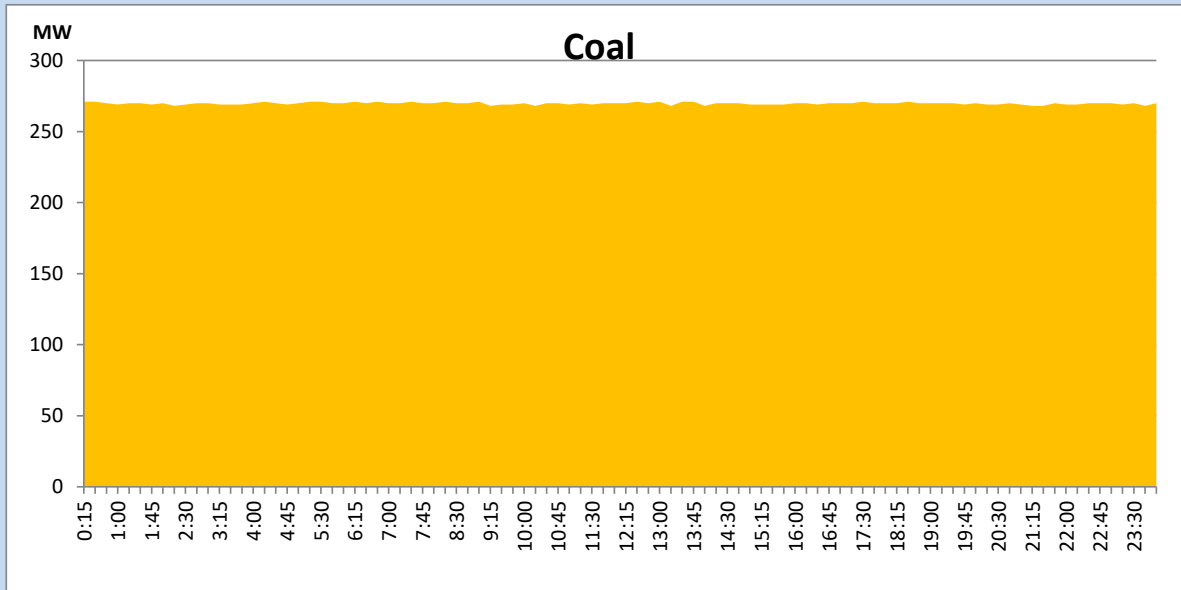
August 24, 2022

Solar and wind data is based on Telemetered Power Stations only



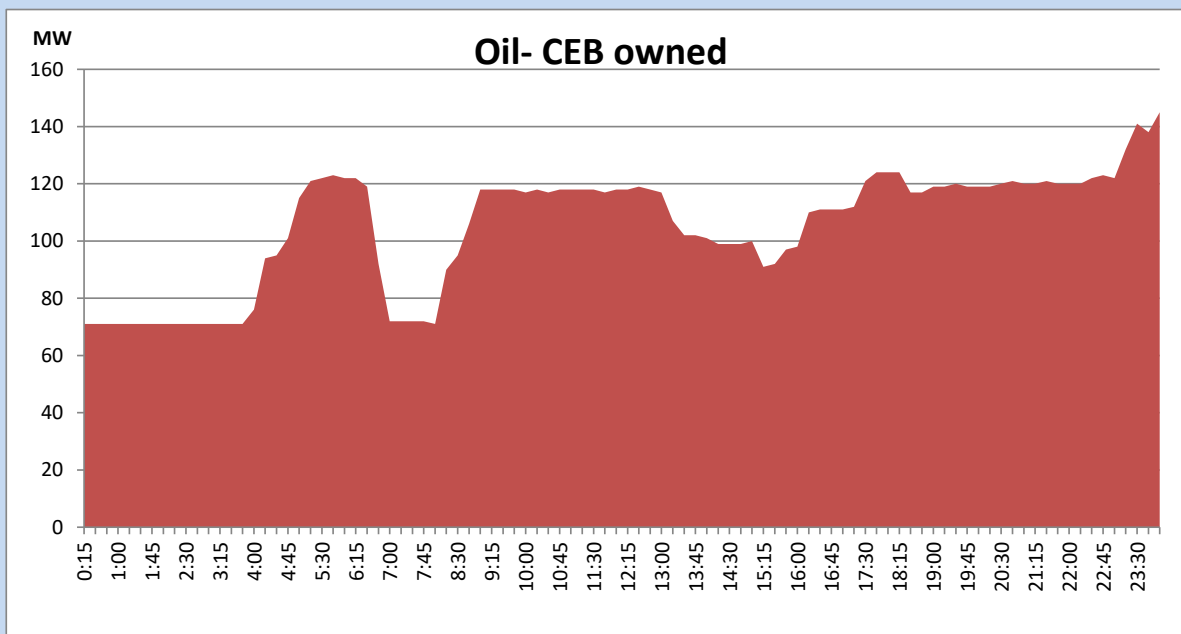
Coal Generation during the Previous day

August 24, 2022



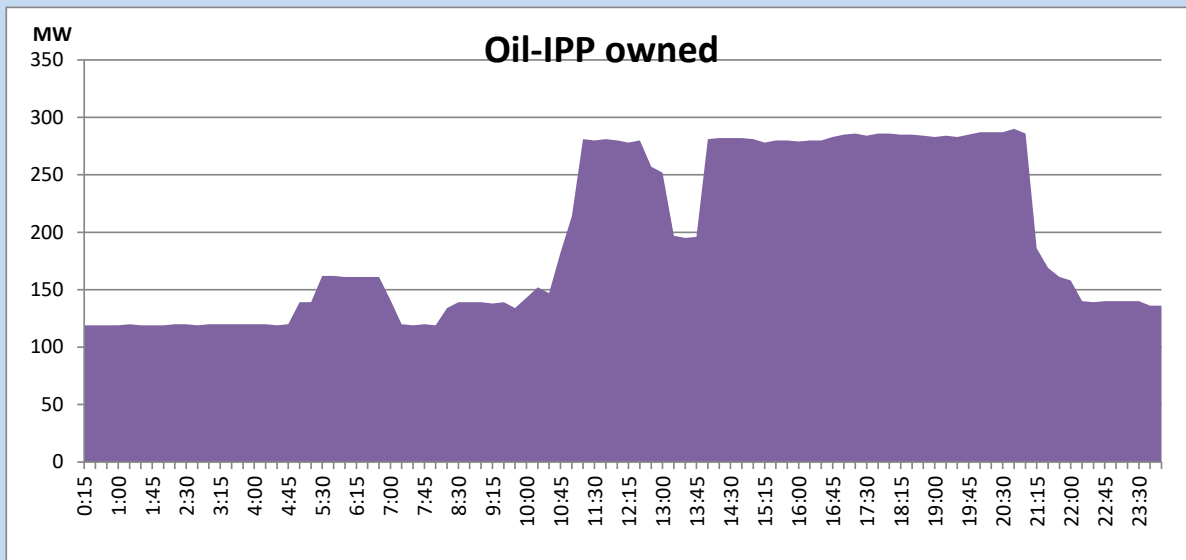
CEB Oil Plant Generation during the Previous day

August 24, 2022



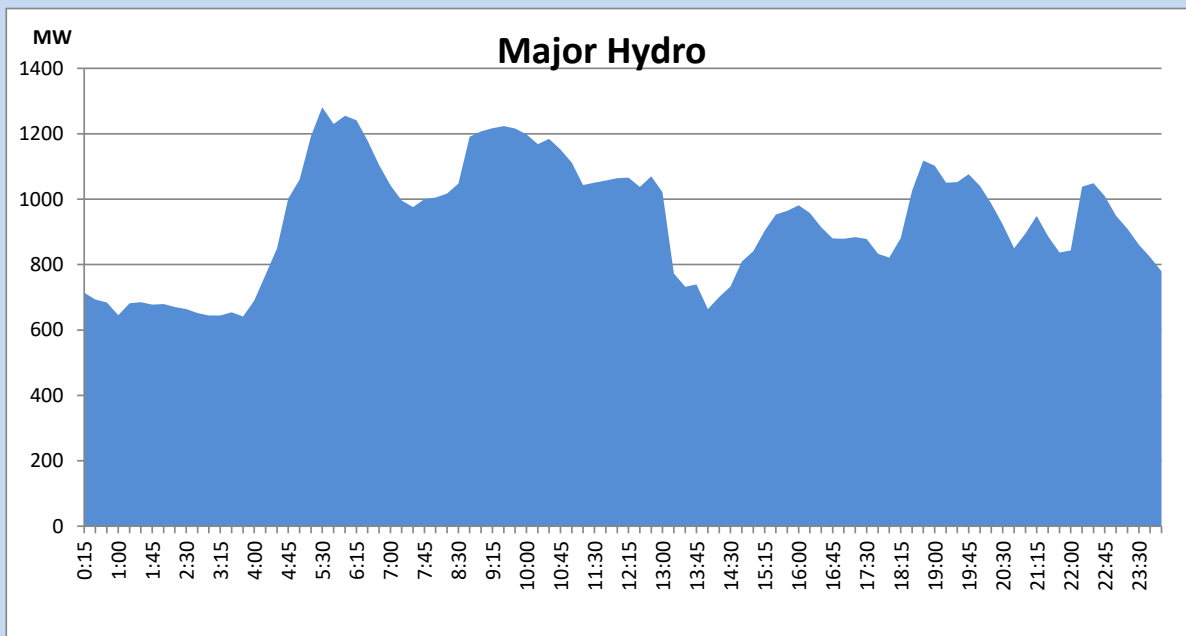
IPP Oil Plant Generation during the Previous day

August 24, 2022



Major Hydro Generation during the Previous day

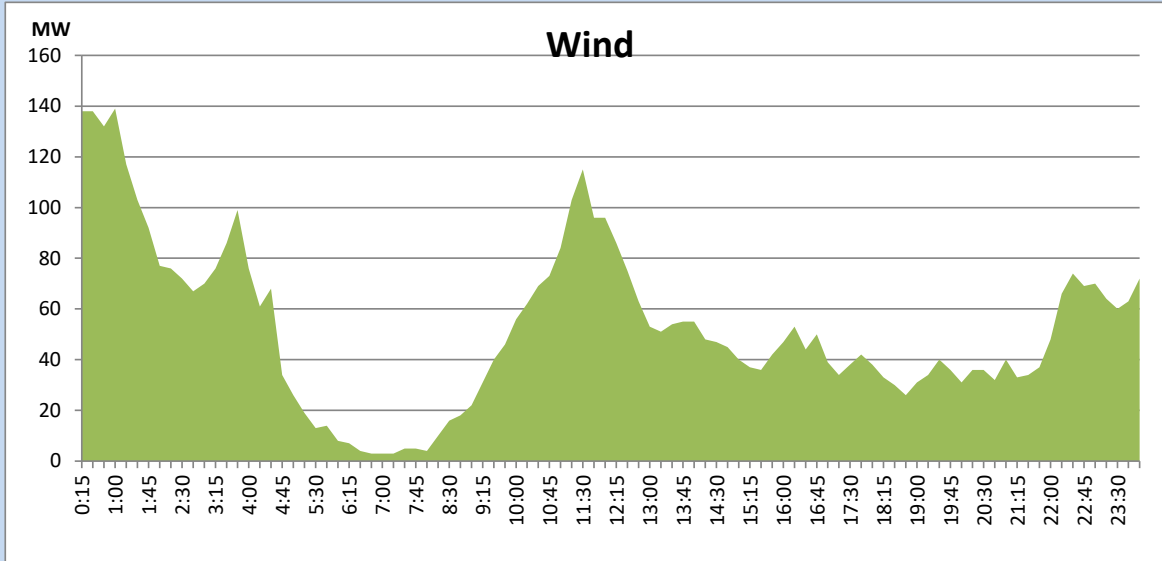
August 24, 2022



Wind Generation during the Previous day

August 24, 2022

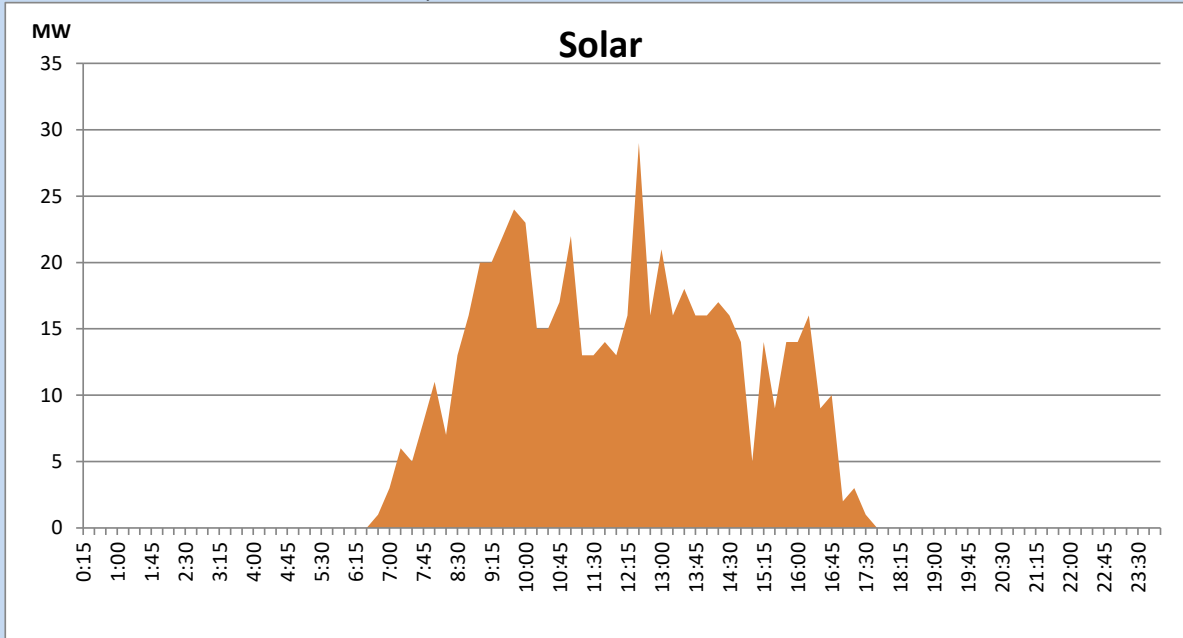
Based on Telemetered Power Stations only



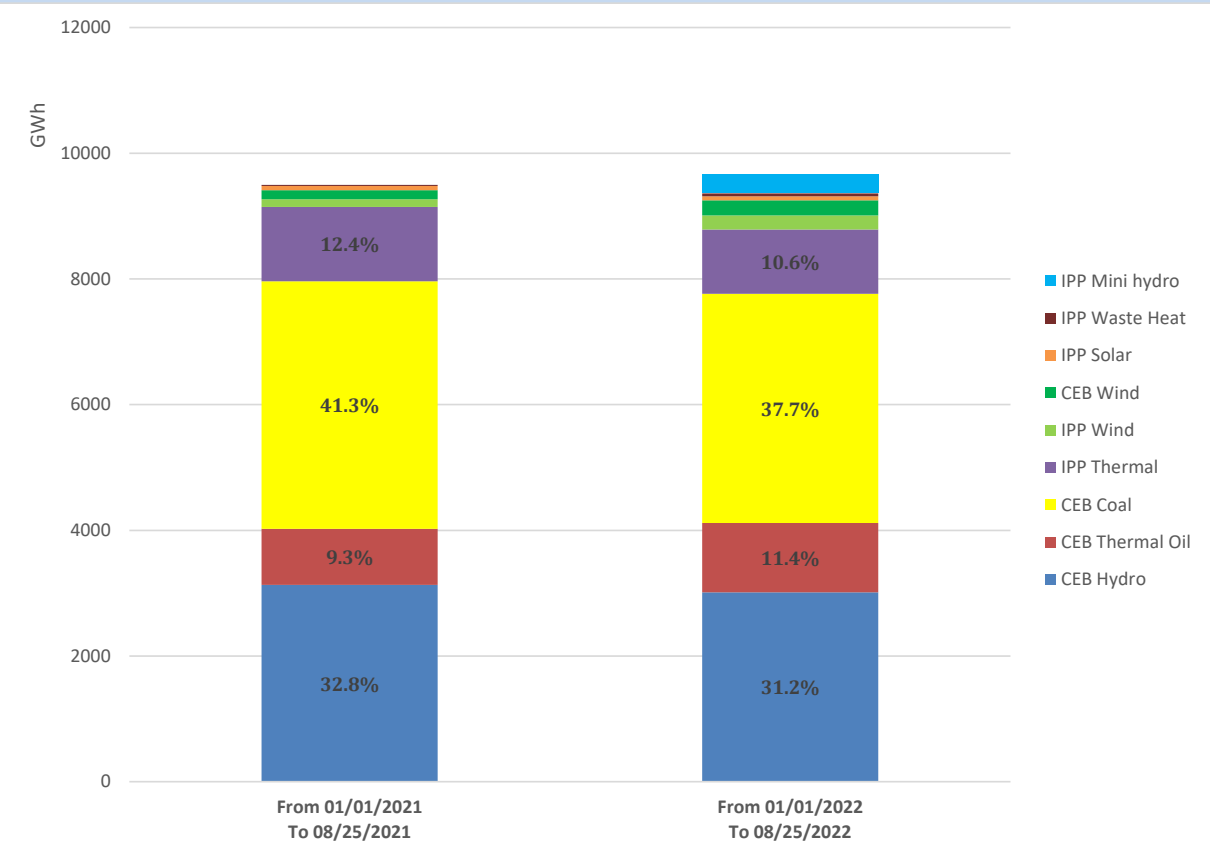
Solar Generation during the Previous day

August 24, 2022

Based on Telemetered Power Stations only



Cumulative Dispatch Comparison with Last Year



Thermal Plant Fuel types

Power Station	Primary Fuel
CEB Thermal	
Sapugaskanda 1	Heavy Fuel
Sapugaskanda 2	Heavy Fuel
Kelanitissa Small Gas Turbines	Auto Diesel
GT 7 - Kelanitissa	Auto Diesel
Kelanitissa CCY	Naphtha or Diesel
Lakvijaya 1	Coal
Lakvijaya 2	Coal
Lakvijaya 3	Coal
Uthuru Janani	Heavy Fuel
Barge CEB	Heavy Fuel

Power Station	Primary Fuel
Private Thermal	
Sojitz - Kelanitissa	Auto Diesel
West Coast	Auto Diesel / Heavy Fuel
ACE Matara	Heavy Fuel
ACE Embilipitiya	Heavy Fuel

Major Incidents during the day -as reported by CEB morning of

August 26, 2022

- 1) Rotational manual load shedding was carried out from 05:30 hrs to 08:30 hrs and 13:00 hrs to 22:00 hrs.
- 2) Kelaniya – Aniyakanda cct tripped from Kelaniya end at 13:13hrs with the indication of DEF operated causing Aniyakanda GSS to be dead (Aniyakanda – Kotugoda cct released for project works since 05/04/2022). At the same time, Kelaniya – Kotugoda cct tripped from both ends with the indication of distance protection operated. Kelaniya – Aniyakanda cct and Anyakanda GSS normalized by 13:42hrs and Kelaniya – Kotugoda cct normalized by 13:51hrs.
- 3) Polpitiya – Athurugiriya/Thulhiriya cct tripped from all three ends at 19:05hrs due to operation of distance protection. Polpitiya – Athurugiriya/Thulhiriya cct was restored at 19:17hrs.