

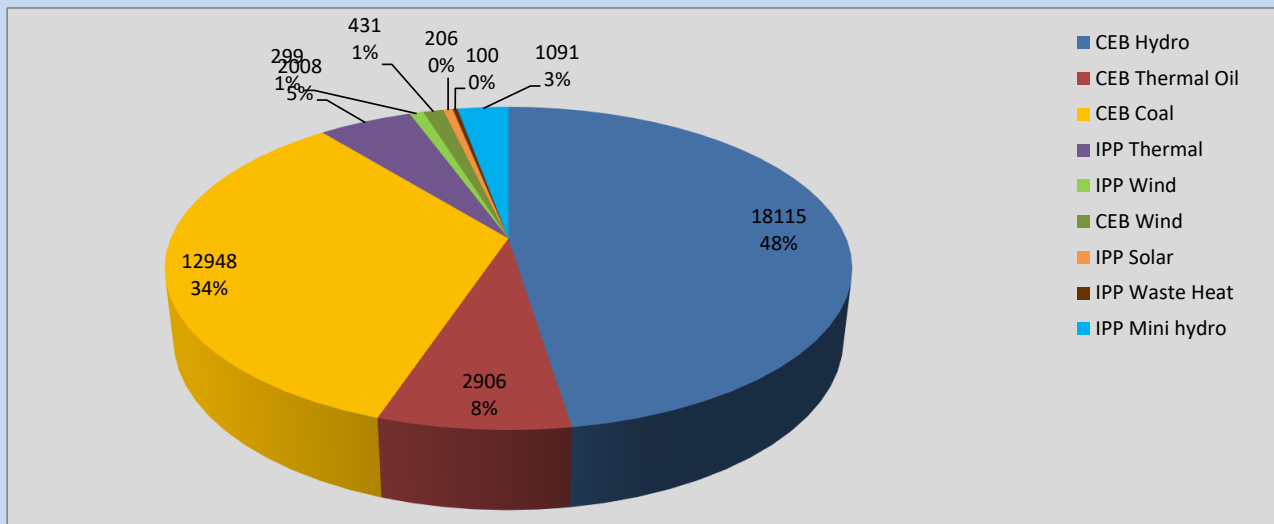
Generation and Reservoirs Statistics

July 25, 2022



PUBLIC UTILITIES COMMISSION OF SRI LANKA

Daily Generation Mix in MWh



Total Generation 38,104 MWh

Note: Above data is excluding contribution from Roof Top Solar, 1MW Solar and certain Mini Hydro plants

Cumulative Dispatch

Note: Following data is Excluding contribution from Roof Top Solar, 1MW solar and Mini Hydro plants

For Current Month

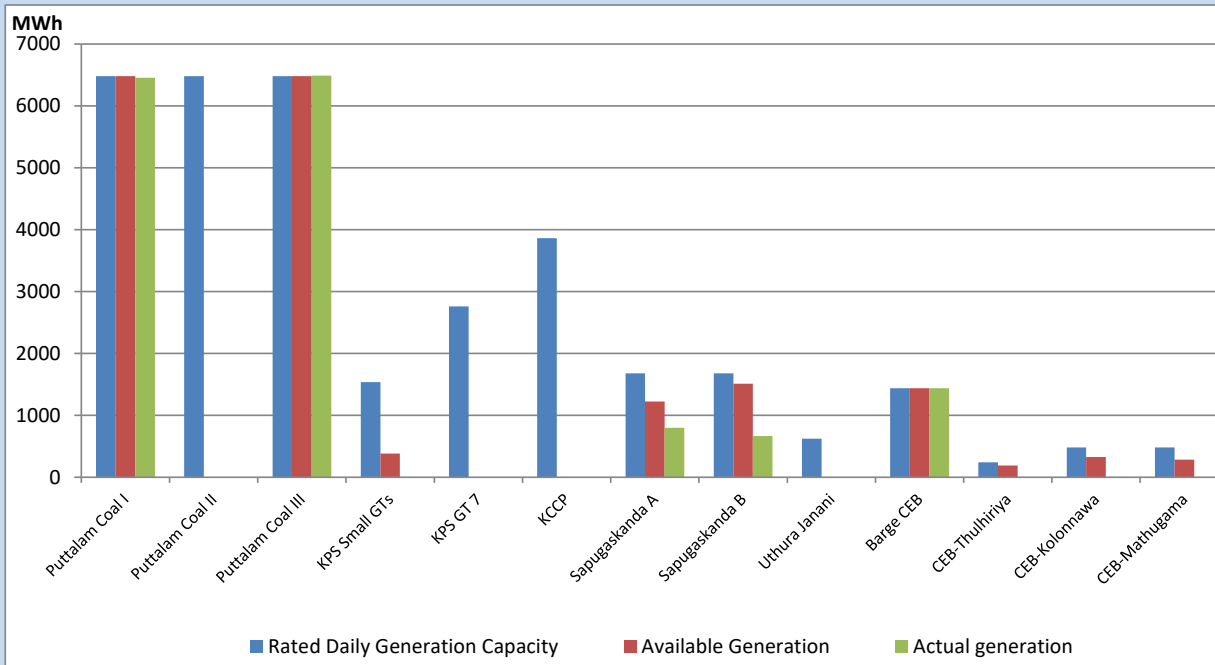
Category	Dispatch (GWh)	Percentage
CEB Hydro	356.59	37.17%
CEB Thermal Oil	93.66	9.76%
CEB Coal	314.56	32.79%
IPP Thermal	80.41	8.38%
SPP Wind	32.09	3.34%
CEB Wind	32.92	3.43%
SPP Solar	6.44	0.67%
SPP Solid Waste	5.11	0.53%
Mini Hydro	37.63	3.92%
Total	959.41	

For Current Year

Category	Dispatch (GWh)	Percentage
CEB Hydro	2,407.9	28.44%
CEB Thermal Oil	1,033.8	12.21%
CEB Coal	3,342.8	39.48%
IPP Thermal	952.0	11.24%
SPP Wind	182.0	2.15%
CEB Wind	198.8	2.35%
SPP Solar	52.9	0.62%
SPP Solid Waste	43.6	0.51%
Mini Hydro	253.2	2.99%
Total	8,466.8	

CEB owned Thermal Plant Dispatch

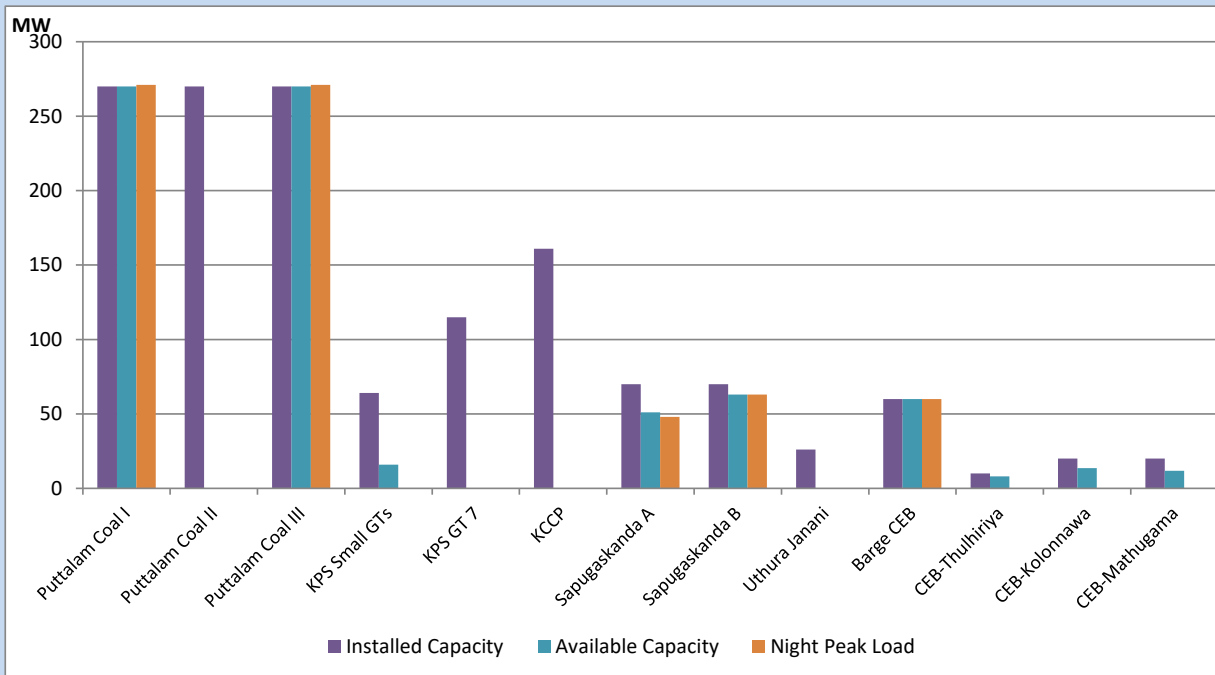
July 25, 2022



Available Generation is estimated based on plant availability at 6.00am on

July 26, 2022

CEB owned Thermal Plant Loading at the Night Peak



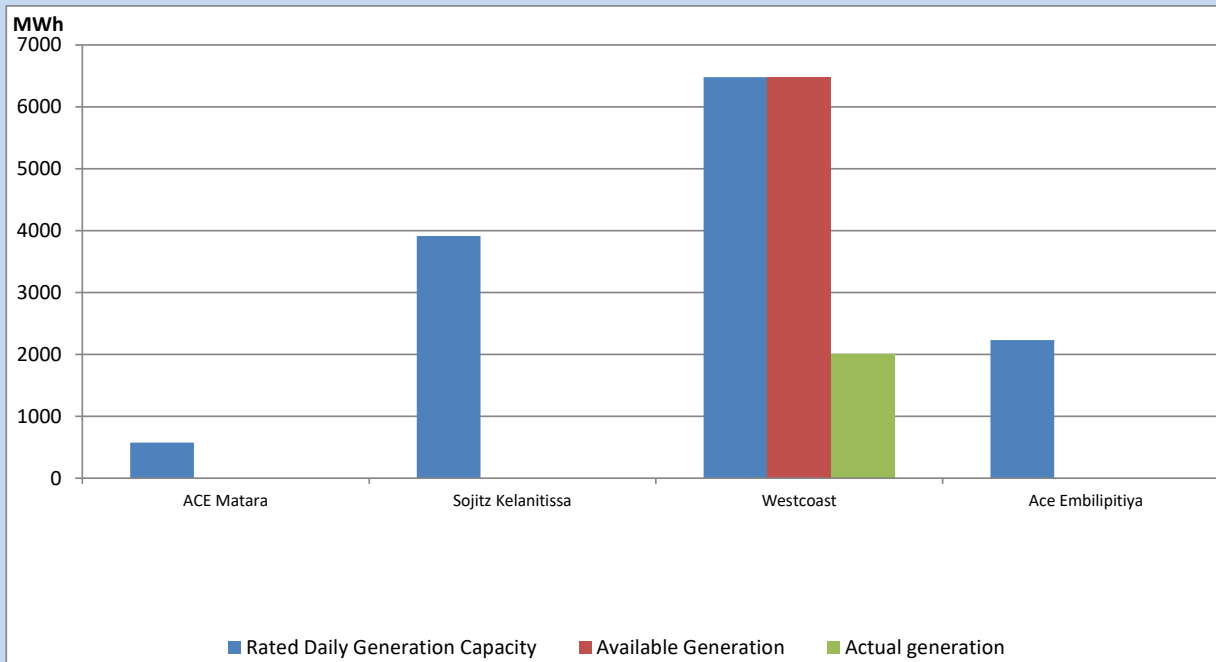
Note- Plant availability is recorded at 6.00 am on

July 26, 2022

IPP owned Thermal Plant Dispatch

July 25, 2022

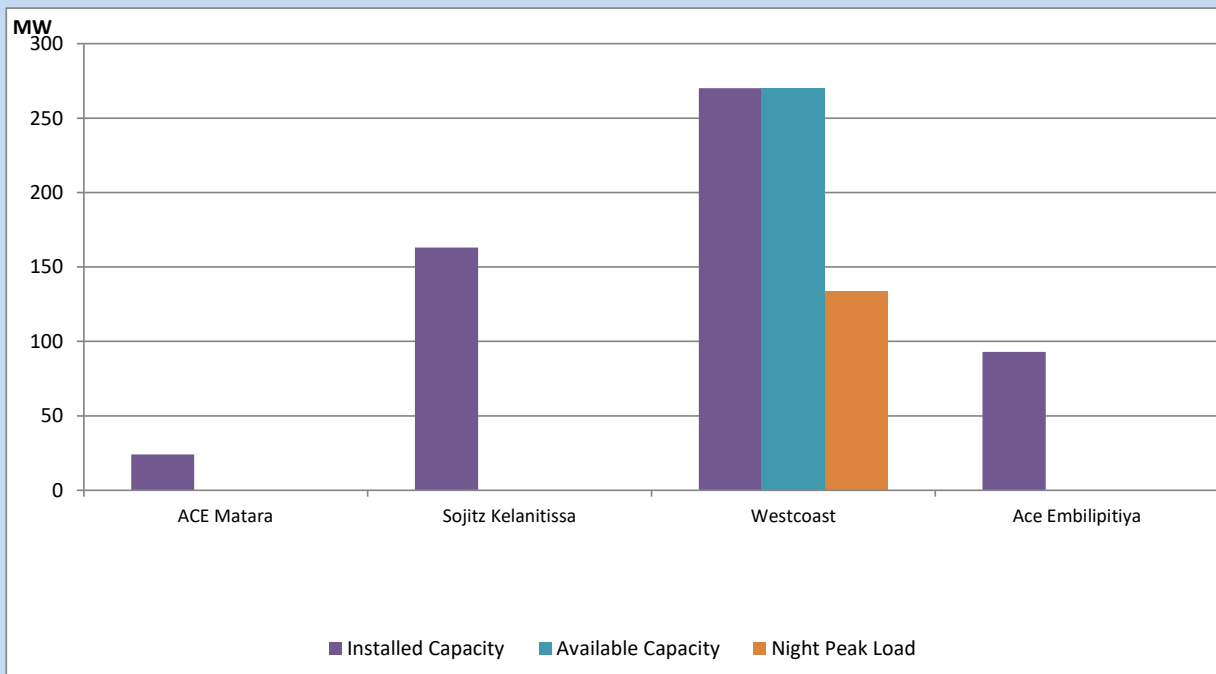
Asia Power, V Power Pallekale, Vpower Galle, V Power Horana, Vpower Hambantota, Vpower Valachchena and Altaqa Mahiyanganaya are not available due to expiration of PPAs



Available Generation is estimated based on plant availability at 6.00am on

July 26, 2022

IPP owned Thermal Plant Loading at the Night Peak

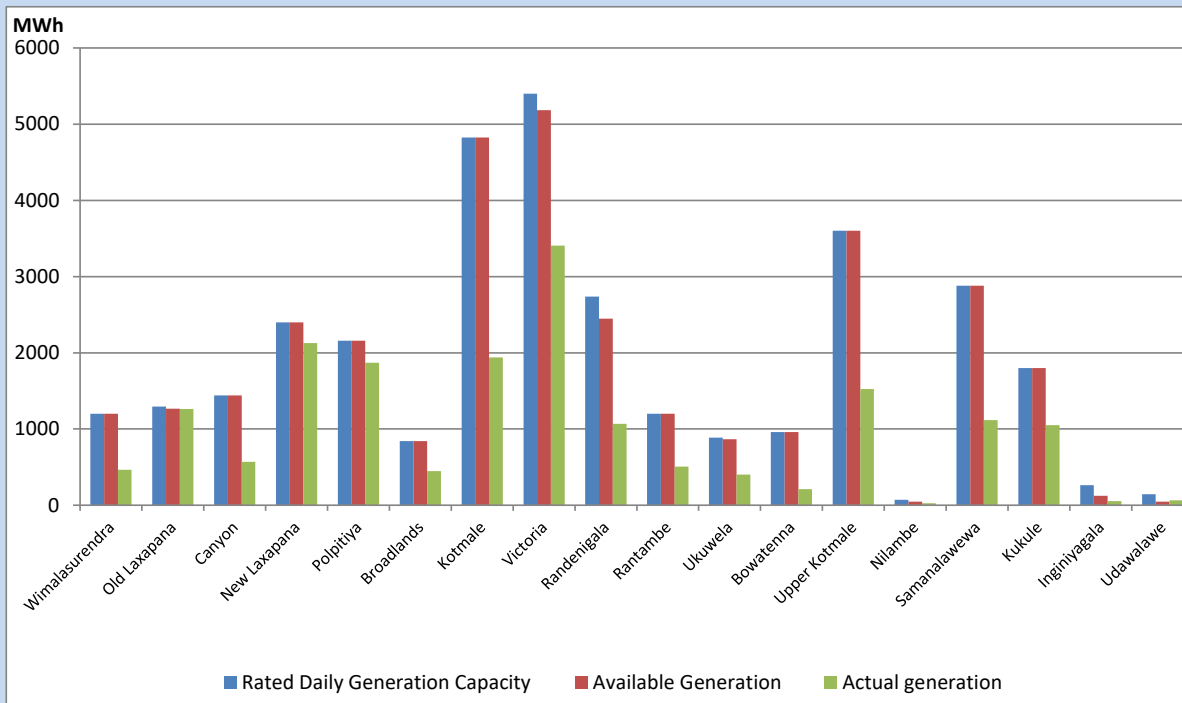


Note- Plant availability is recorded at 6.00 am on

July 26, 2022

Major Hydro Plant Dispatch

July 25, 2022

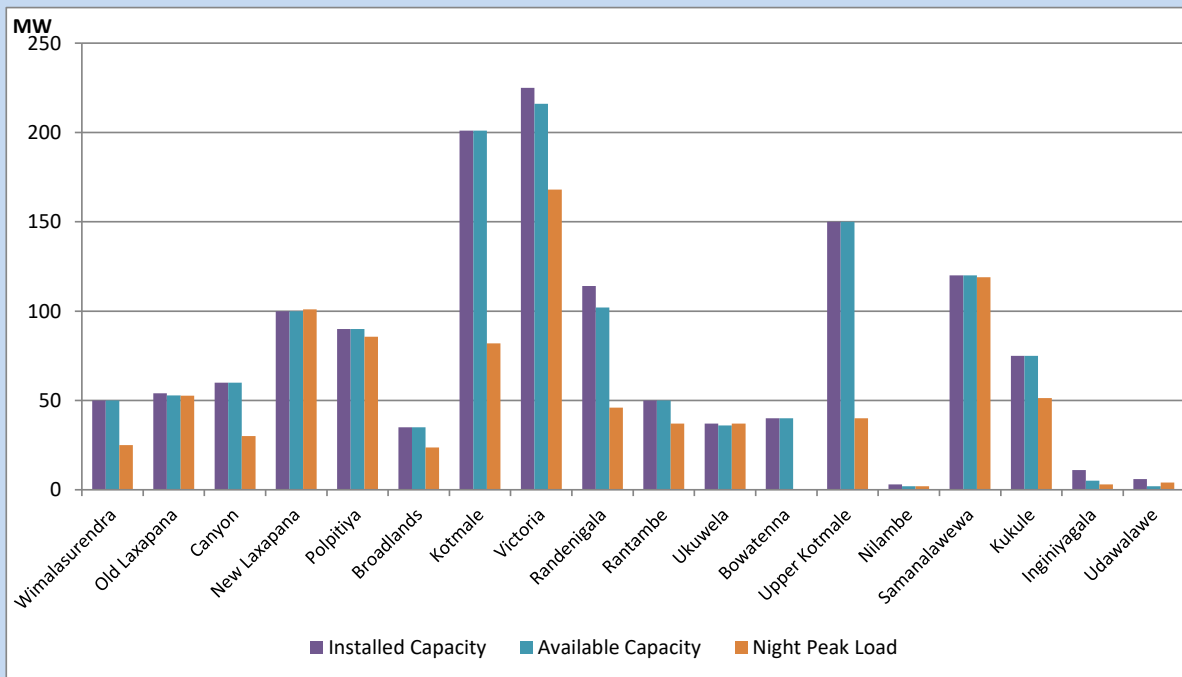


Available Generation is estimated based on plant availability at 6.00am on
Broadlands power plant is operating in the Commissioning Stage

July 26, 2022

Major Hydro Plant Loading at Night Peak

July 25, 2022



Note- Plant availability is recorded at 6.00 am on
Broadlands power plant is operating in the Commissioning Stage

July 26, 2022

Summary of Major Plant performance

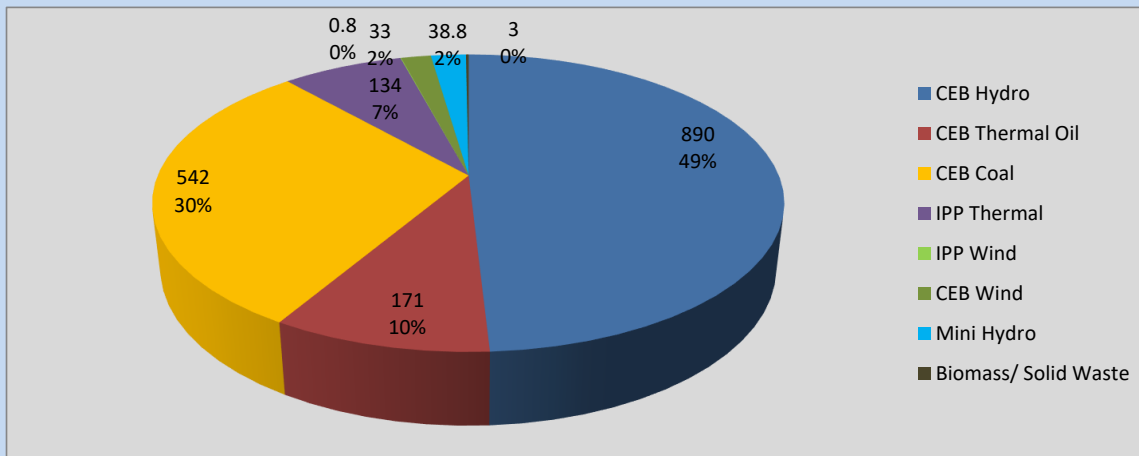
Plant	Installed Capacity	Plant Availability	Night peak Load	Plant Dispatch
	(MW)	(MW)	(MW)	(MWh)
Wimalasurendra	50	50	25	465
Old Laxapana	54	53	53	1,264
Canyon	60	60	30	571
New Laxapana	100	100	101	2,127
Polpitiya	90	90	86	1,871
Broadlands	35	35	24	446
Kotmale	201	201	82	1,940
Victoria	225	216	168	3,408
Randenigala	114	102	46	1,068
Rantambe	50	50	37	506
Ukuwela	37	36	37	402
Bowatenna	40	40	0	209
Upper Kotmale	150	150	40	1,524
Nilambe	3	2	2	26
Samanalawewa	120	120	119	1,117
Kukule	75	75	51	1,052
Inginiyagala	11	5	3	54
Udawalawe	6	2	4	65
Puttalam Coal I	270	270	271	6,456
Puttalam Coal II	270	0	0	0
Puttalam Coal III	270	270	271	6,492
KPS Small GTs	64	16	0	0
KPS GT 7	115	0	0	0
KCCP	161	0	0	0
Sapugaskanda A	70	51	48	800
Sapugaskanda B	70	63	63	667
Uthura Janani	26	0	0	0
Barge CEB	60	60	60	1,438
CEB-Thulhiriya	10	8	0	0
CEB-Kolonnawa	20	14	0	1
CEB-Mathugama	20	12	0	0
ACE Matara	24	0	0	0
Sojitz Kelanitissa	163	0	0	0
West Coast	270	270	134	2,008
ACE Embilipitiya	93	0	0	0
Total	3,397	2,420	1,830	38,104

Plant availability is the availability recorded at 6 am on

July 26, 2022

Contribution to the Night Peak in MW

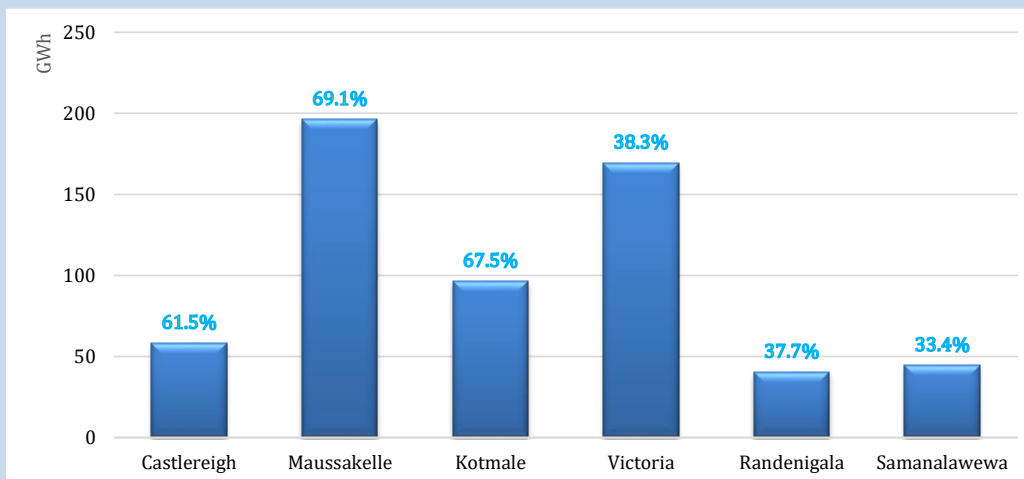
July 25, 2022



Night Peak*	1,813.0 MW
Day Peak	1,877.8 MW
Minimum Demand	1,163.3 MW

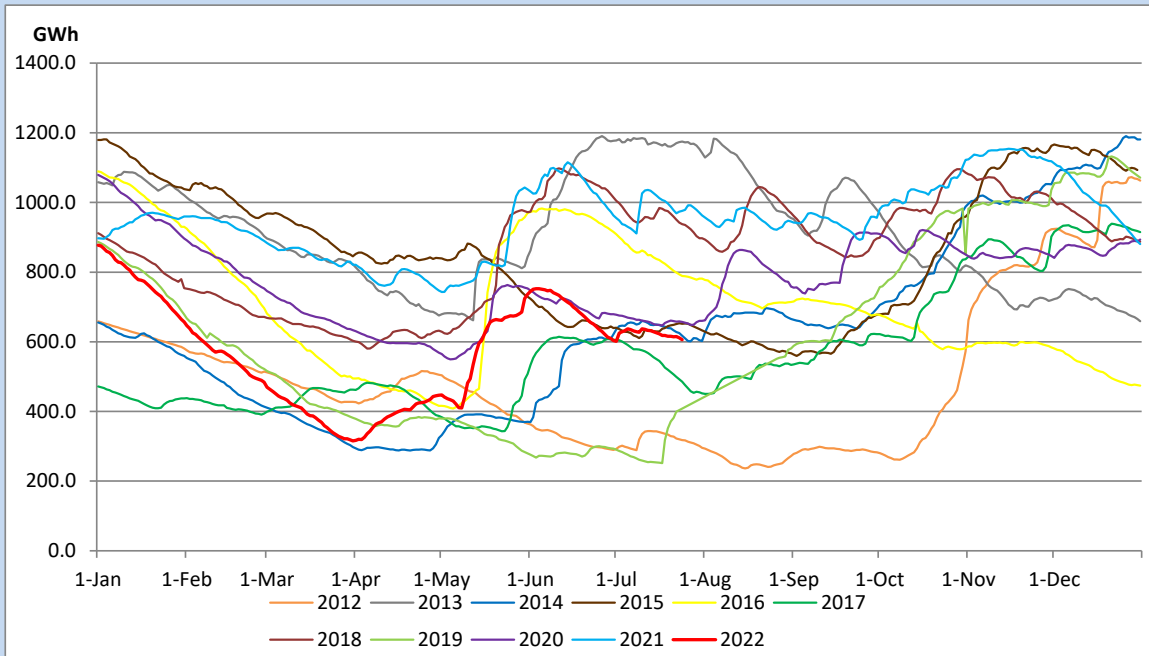
Above figures are excluding contribution from Roof Top Solar, 1MW solar, certain Wind plants and Mini Hydro plants

Reservoir Levels - as at 06.00 Hr on July 26, 2022

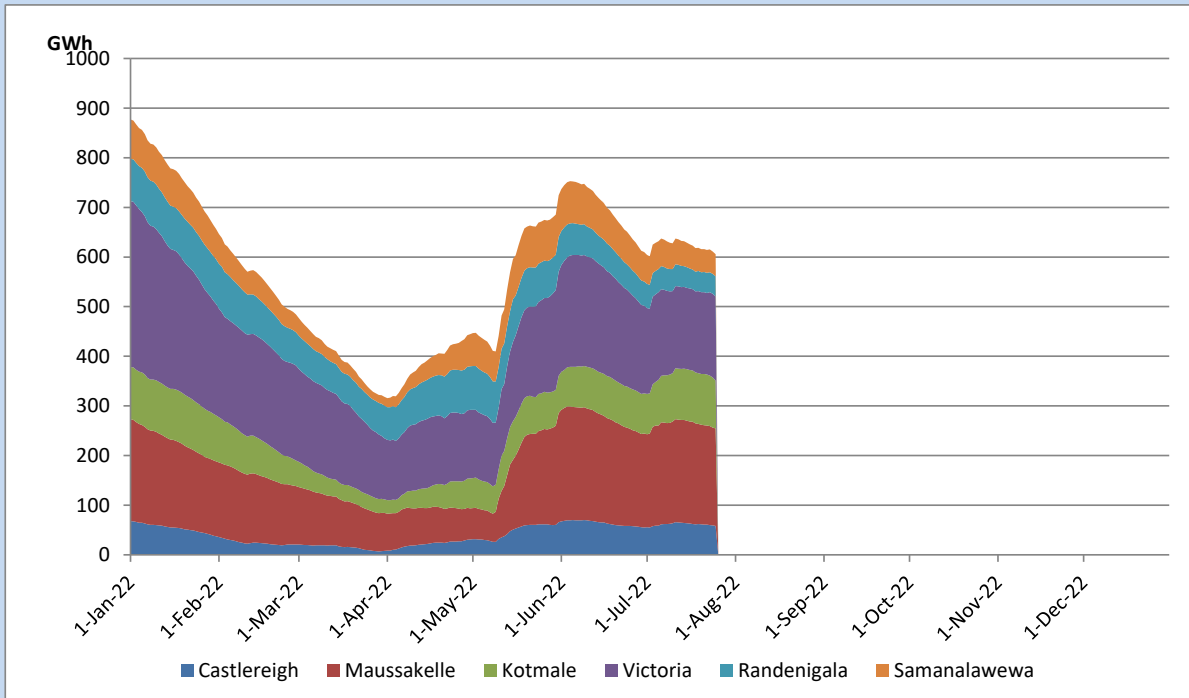


Total Reservoir Level	605.6 GWh
% of Total capacity	50.3%

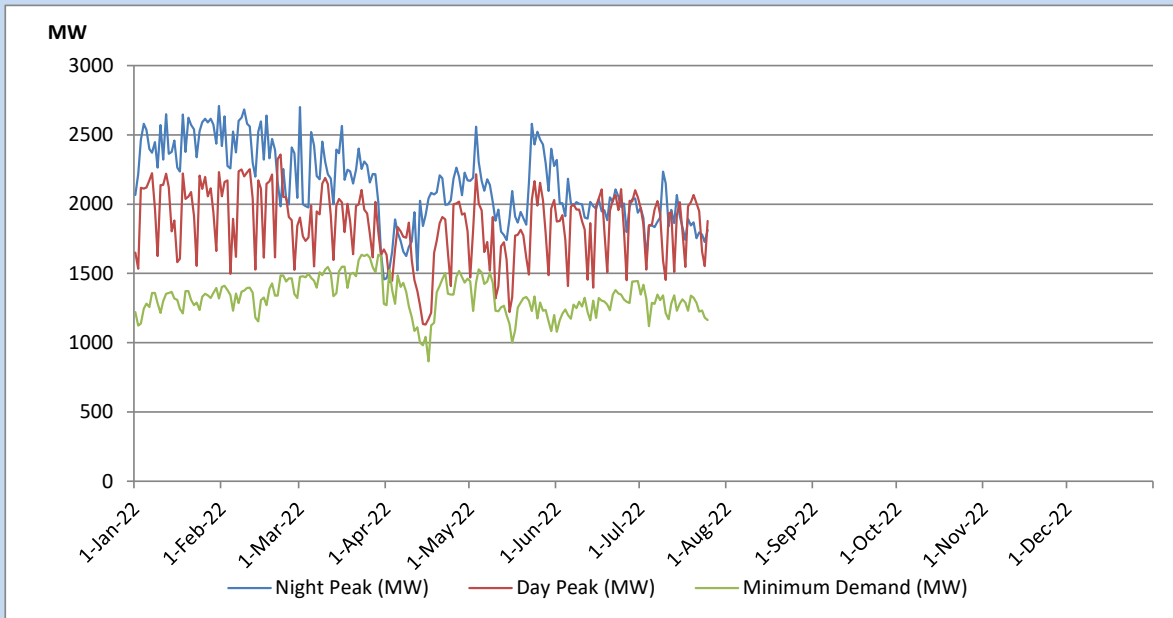
Comparison of Total Reservoir Storage Levels with Past Years



Variation of Major Hydro Reservoir Levels in the current year (GWh)



Variation of Demand during the current year

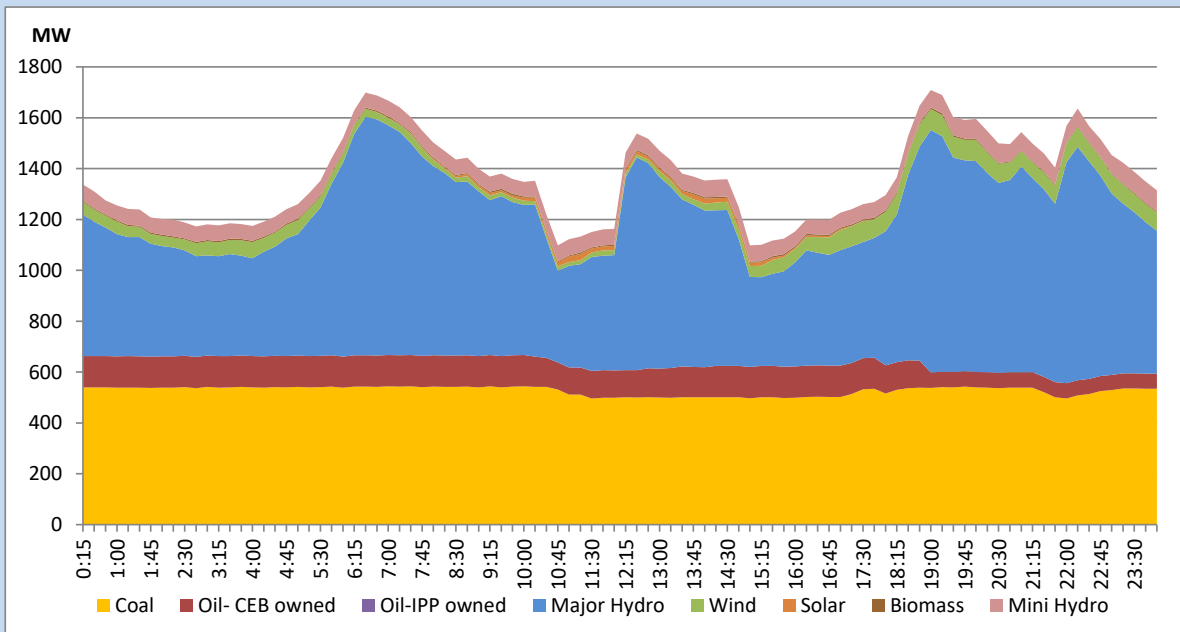


The above figures are excluding contribution from Roof Top Solar, 1MW solar, certain Wind plants and Mini Hydro plants

Daily Load Curve of the Previous day

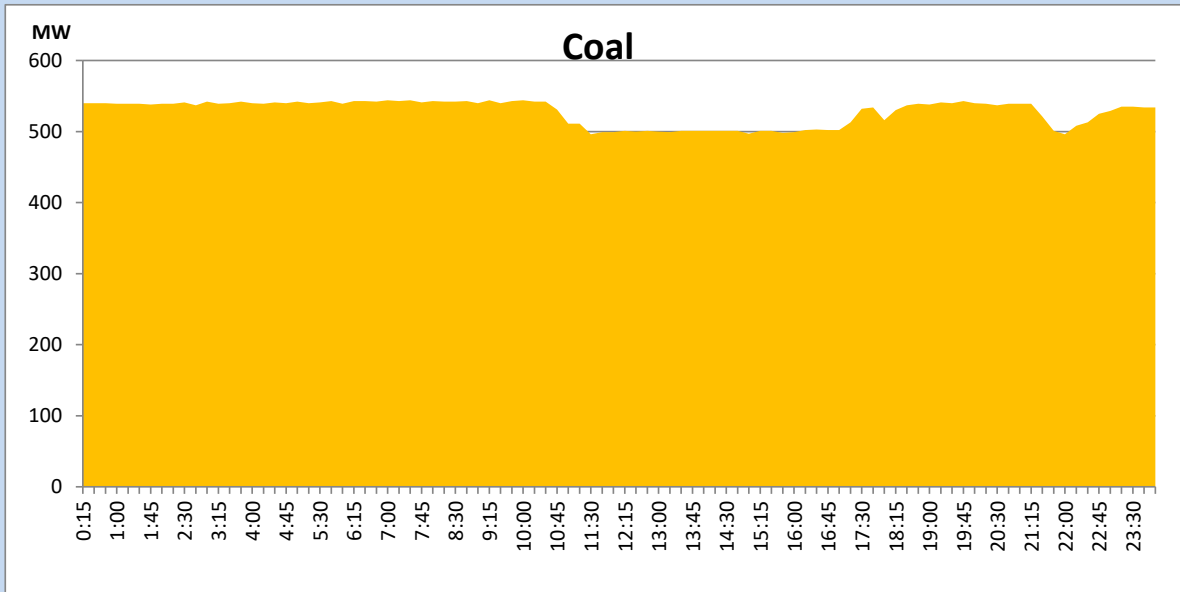
July 24, 2022

Solar and wind data is based on Telemetered Power Stations only



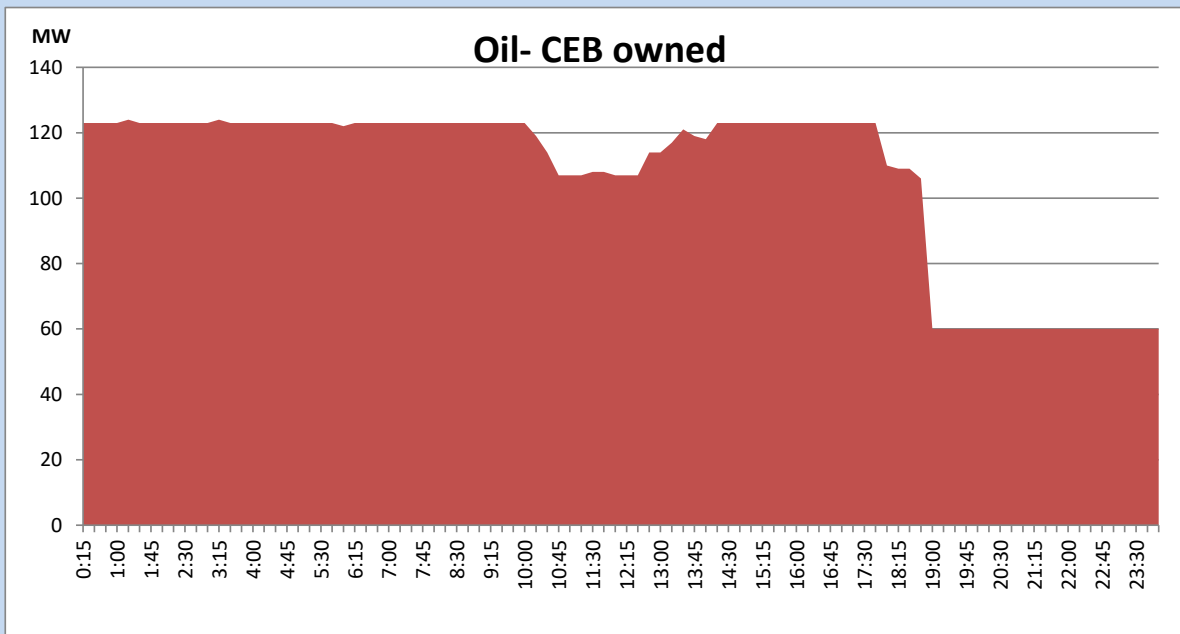
Coal Generation during the Previous day

July 24, 2022



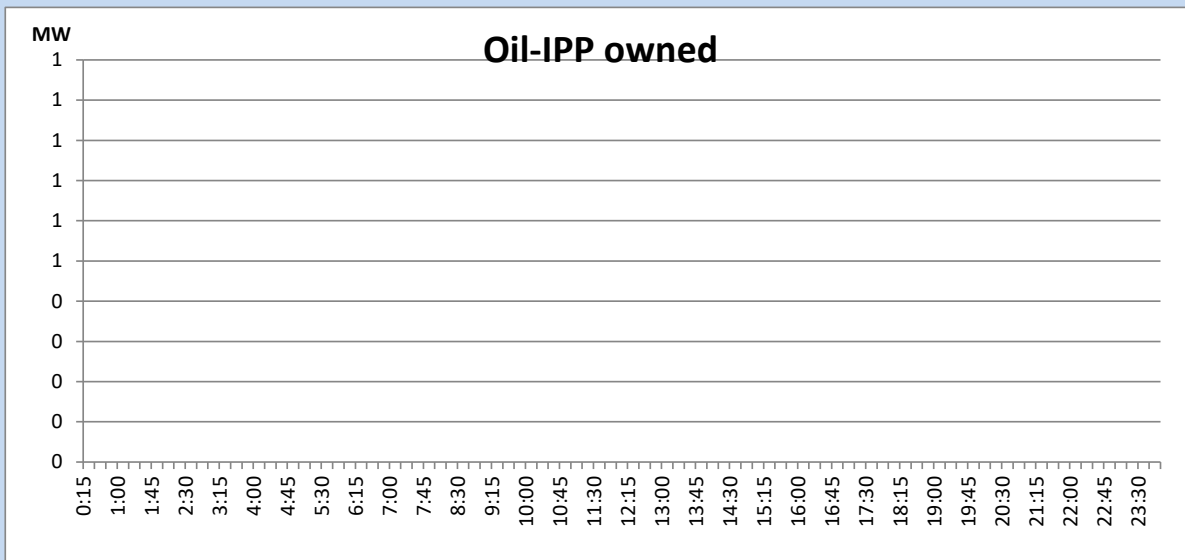
CEB Oil Plant Generation during the Previous day

July 24, 2022



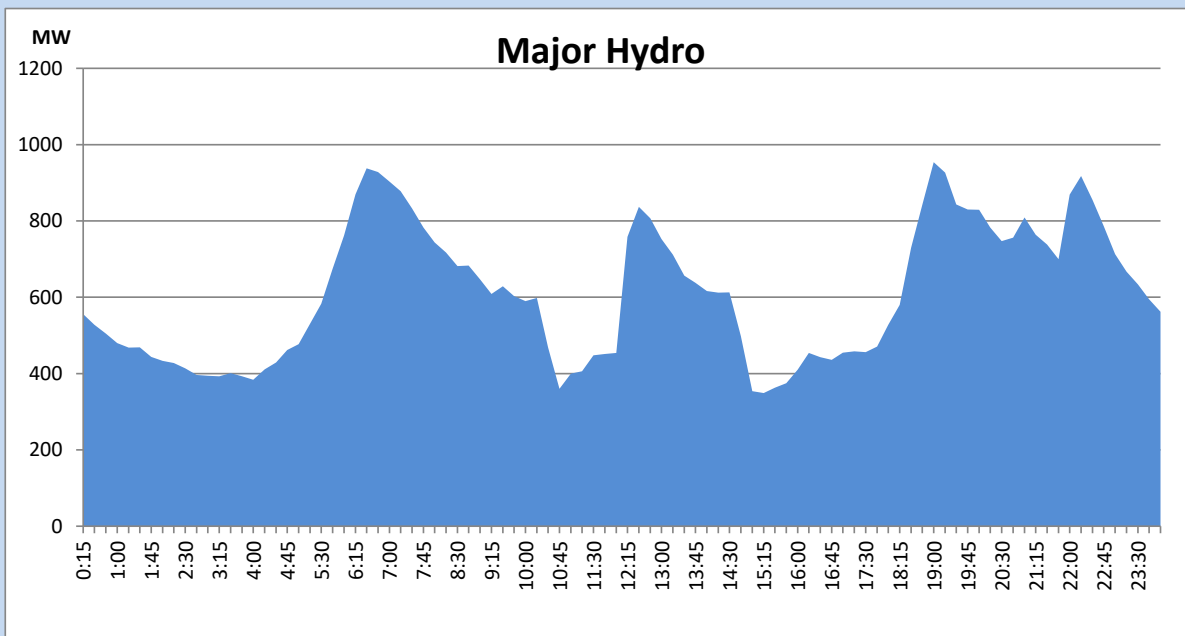
IPP Oil Plant Generation during the Previous day

July 24, 2022



Major Hydro Generation during the Previous day

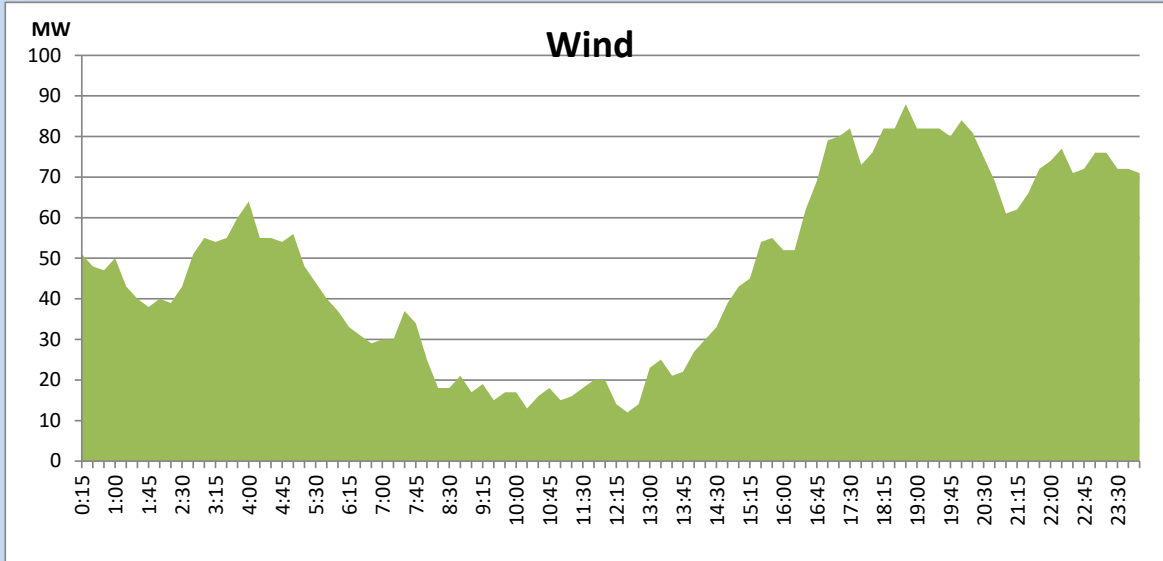
July 24, 2022



Wind Generation during the Previous day

July 24, 2022

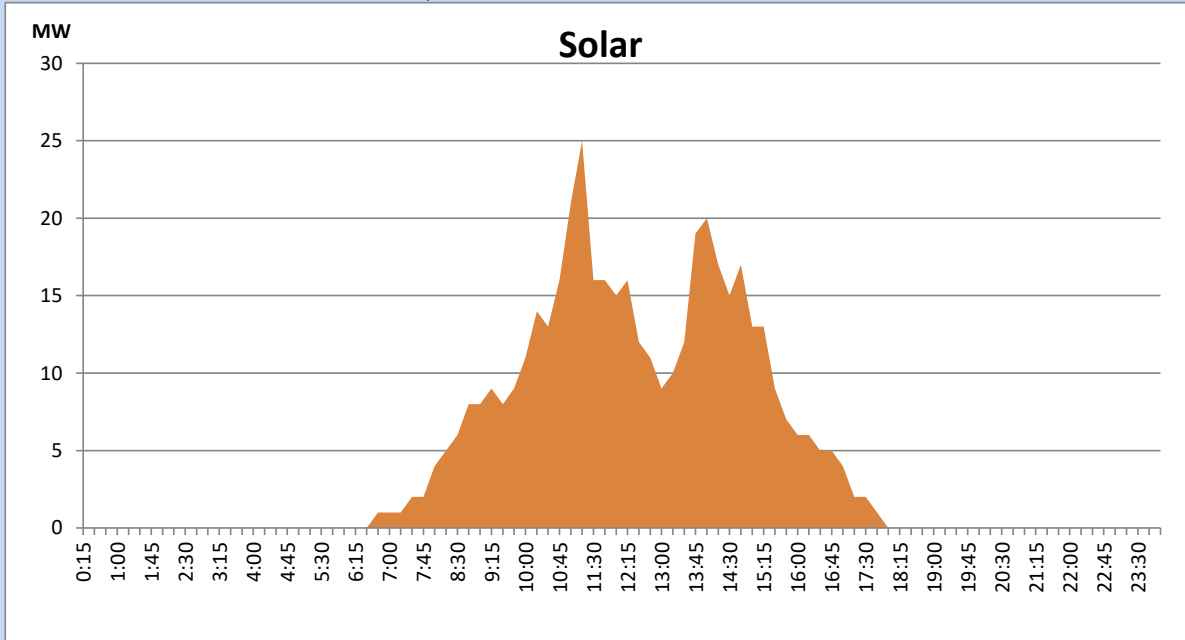
Based on Telemetered Power Stations only



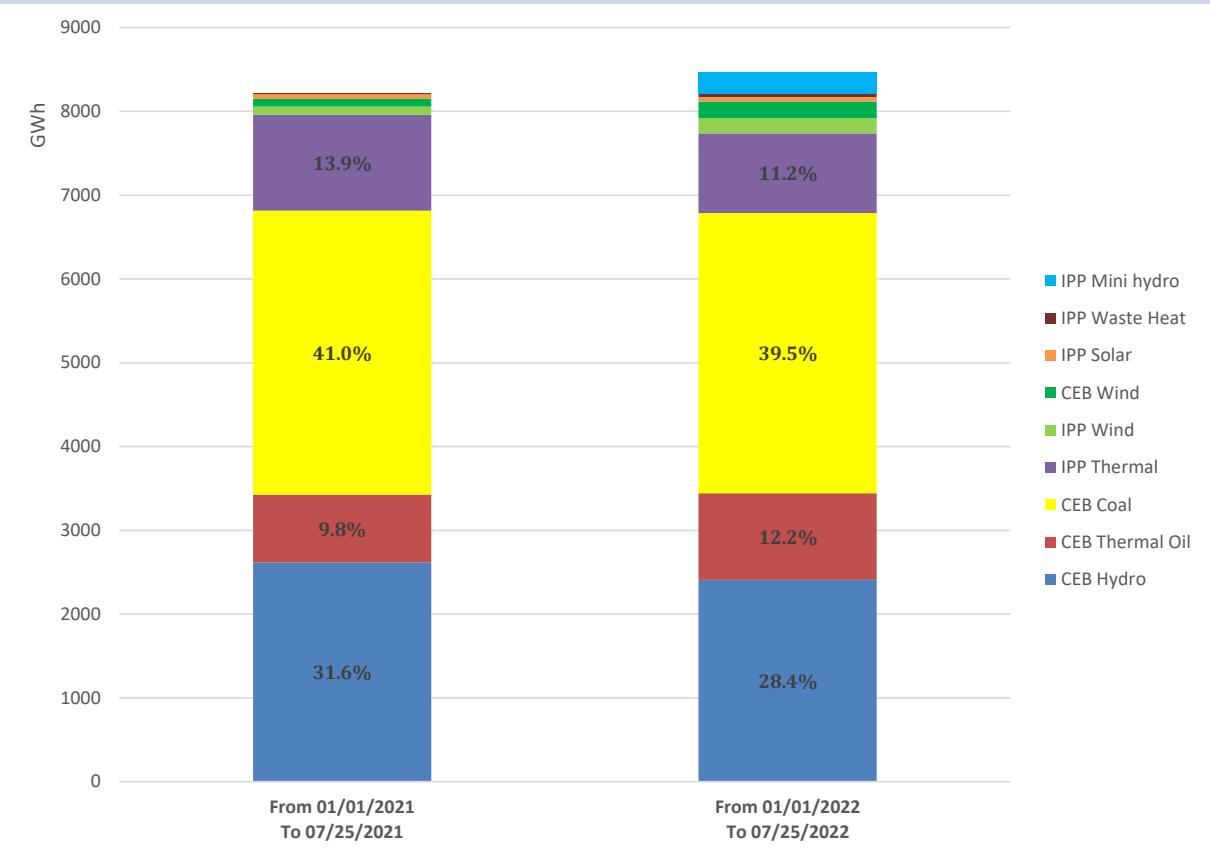
Solar Generation during the Previous day

July 24, 2022

Based on Telemetered Power Stations only



Cumulative Dispatch Comparison with Last Year



Thermal Plant Fuel types

Power Station	Primary Fuel
CEB Thermal	
Sapugaskanda 1	Heavy Fuel
Sapugaskanda 2	Heavy Fuel
Kelanitissa Small Gas Turbines	Auto Diesel
GT 7 - Kelanitissa	Auto Diesel
Kelanitissa CCY	Naphtha or Diesel
Lakvijaya 1	Coal
Lakvijaya 2	Coal
Lakvijaya 3	Coal
Uthuru Janani	Heavy Fuel
Barge CEB	Heavy Fuel

Power Station	Primary Fuel
Private Thermal	
Sojitz - Kelanitissa	Auto Diesel
West Coast	Auto Diesel / Heavy Fuel
ACE Matara	Heavy Fuel
ACE Embilipitiya	Heavy Fuel

Major Incidents during the day -as reported by CEB morning of

July 26, 2022

- 1) Rotational manual load shedding was carried out from 05:30 hrs to 08:30 hrs and 13:00 hrs to 22:00 hrs.
- 2) WPS unit 02 tripped at 11:46 hrs rejecting 25MW from the system due to winding temperature high alarm. WPS unit 02 was made available at 14:57 hrs.