

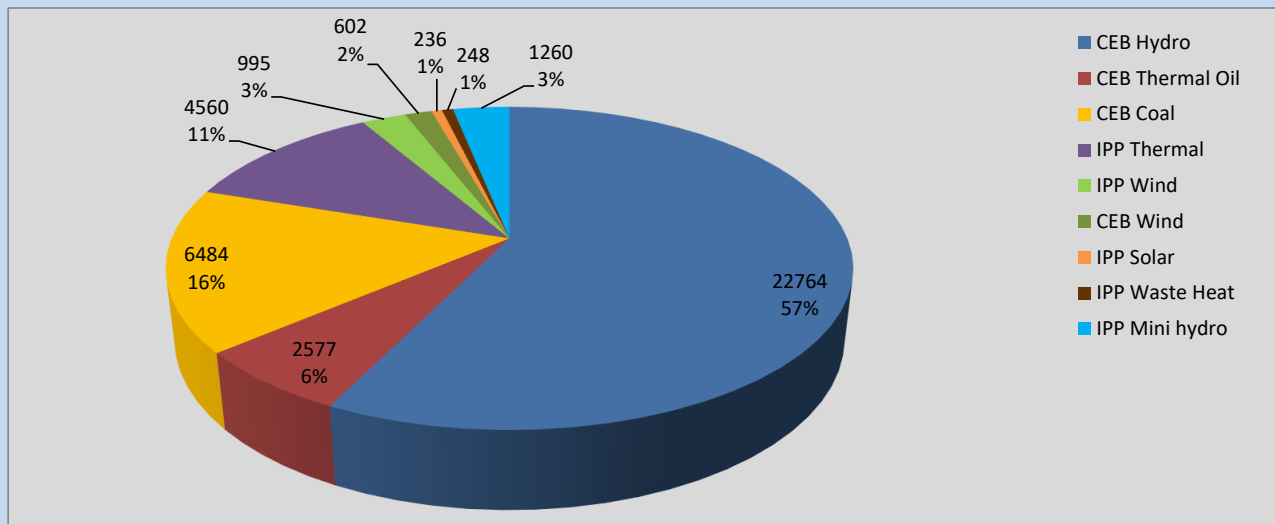
# Generation and Reservoirs Statistics

August 24, 2022



PUBLIC UTILITIES COMMISSION OF SRI LANKA

## Daily Generation Mix in MWh



**Total Generation** **39,726 MWh**

Note: Above data is excluding contribution from Roof Top Solar, 1MW Solar and certain Mini Hydro plants

## Cumulative Dispatch

Note: Following data is Excluding contribution from Roof Top Solar, 1MW solar and Mini Hydro plants

### For Current Month

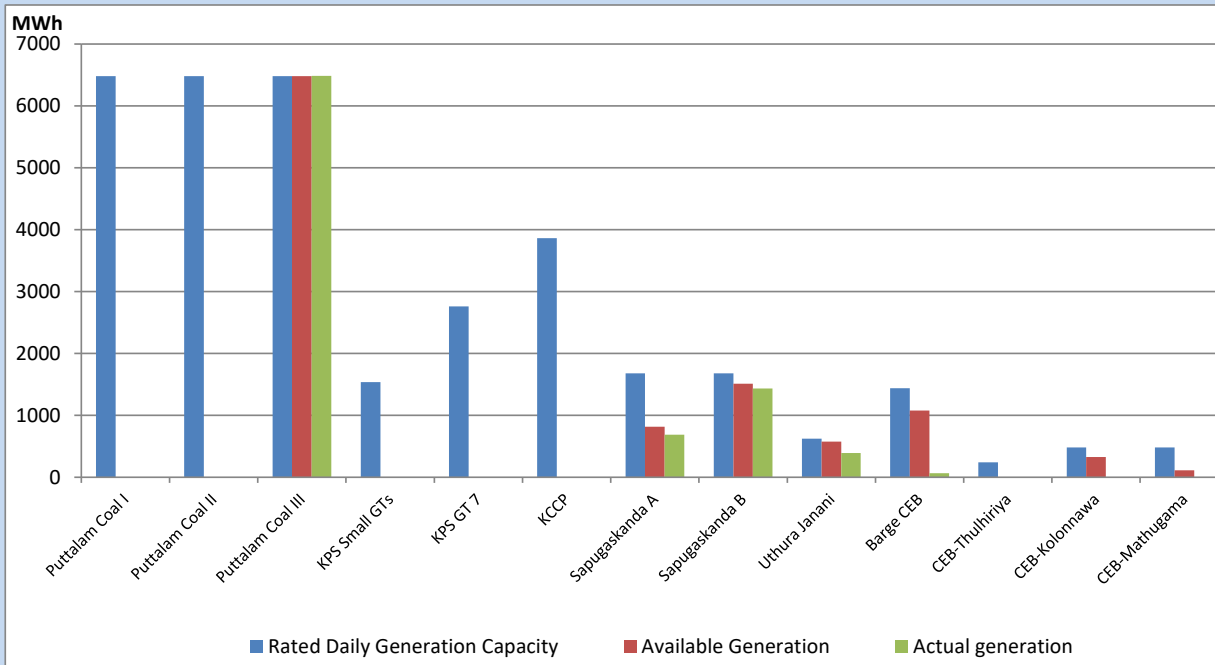
Category	Dispatch (GWh)	Percentage
CEB Hydro	491.13	52.68%
CEB Thermal Oil	43.78	4.70%
CEB Coal	220.44	23.65%
IPP Thermal	46.47	4.98%
SPP Wind	42.00	4.51%
CEB Wind	39.43	4.23%
SPP Solar	6.70	0.72%
SPP Solid Waste	3.93	0.42%
Mini Hydro	38.37	4.12%
<b>Total</b>	<b>932.25</b>	

### For Current Year

Category	Dispatch (GWh)	Percentage
CEB Hydro	2,989.3	31.07%
CEB Thermal Oil	1,099.1	11.42%
CEB Coal	3,640.1	37.83%
IPP Thermal	1,018.9	10.59%
SPP Wind	226.0	2.35%
CEB Wind	240.7	2.50%
SPP Solar	60.7	0.63%
SPP Solid Waste	48.0	0.50%
Mini Hydro	299.4	3.11%
<b>Total</b>	<b>9,621.8</b>	

## CEB owned Thermal Plant Dispatch

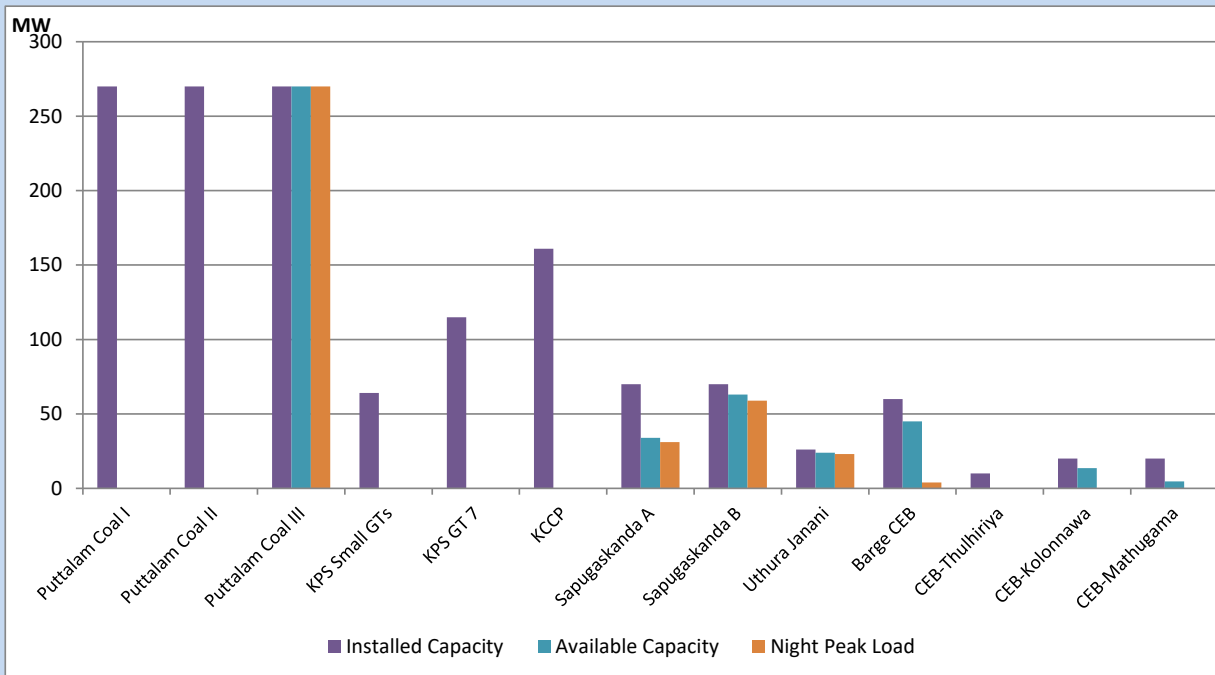
August 24, 2022



Available Generation is estimated based on plant availability at 6.00am on

August 25, 2022

## CEB owned Thermal Plant Loading at the Night Peak



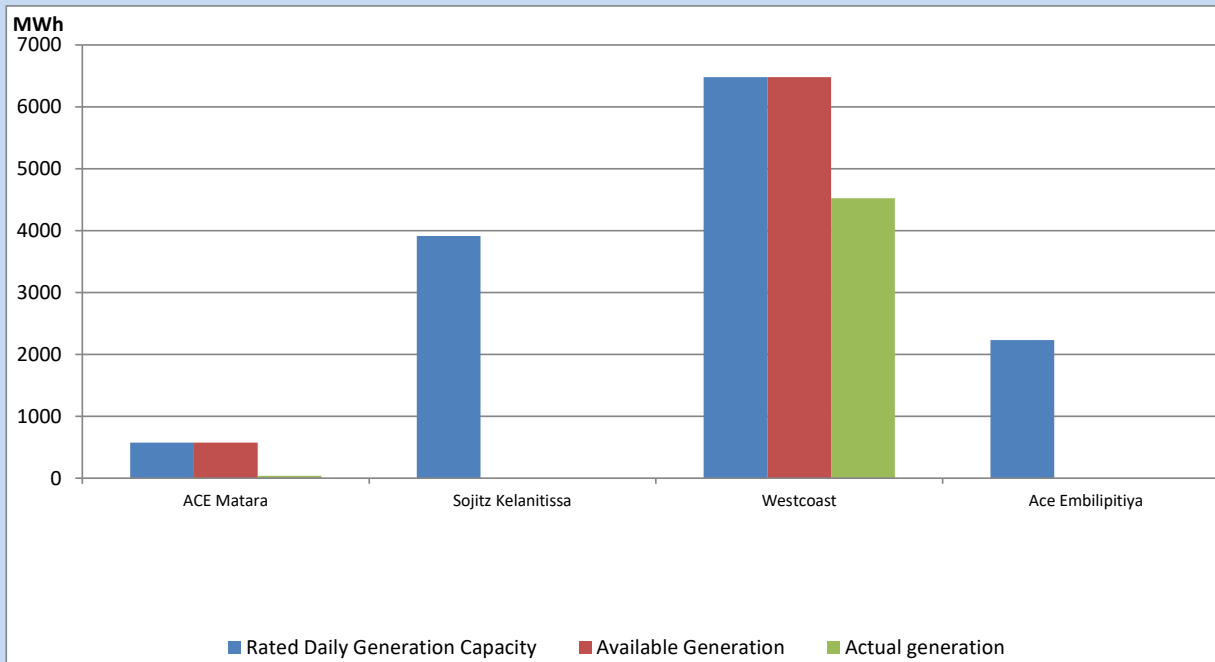
Note- Plant availability is recorded at 6.00 am on

August 25, 2022

## IPP owned Thermal Plant Dispatch

August 24, 2022

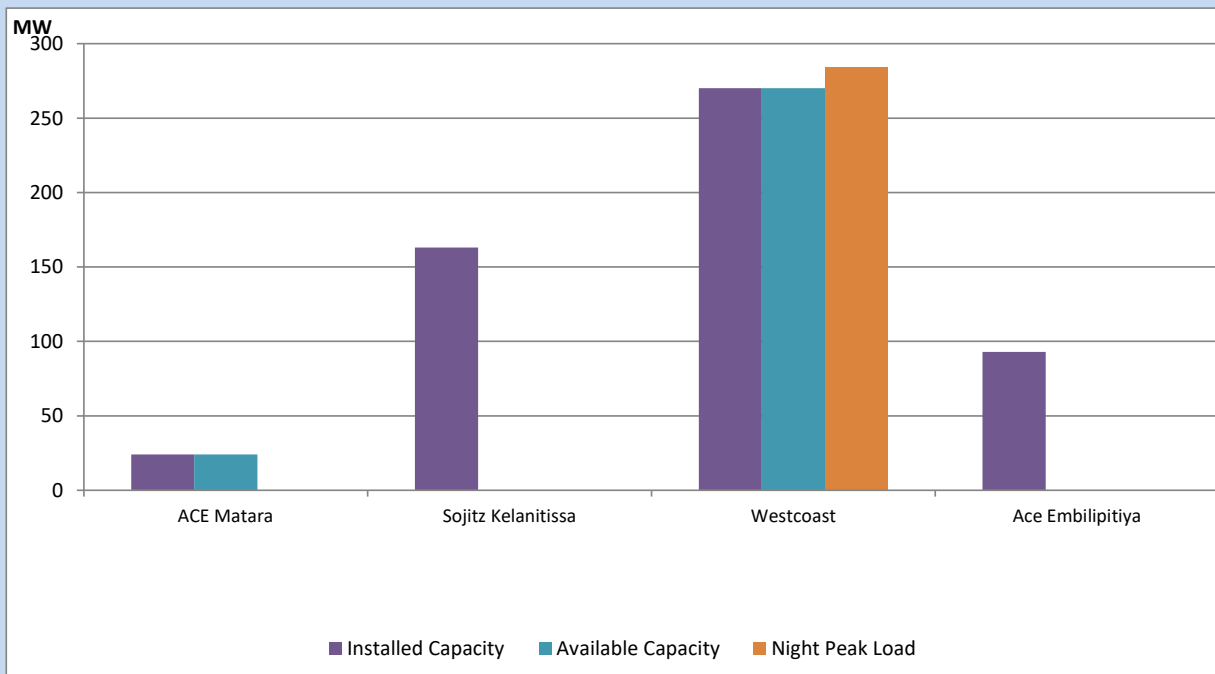
Asia Power, V Power Pallekale, Vpower Galle, V Power Horana, Vpower Hambantota, Vpower Valachchena and Altaqa Mahiyanganaya are not available due to expiration of PPAs



Available Generation is estimated based on plant availability at 6.00am on

August 25, 2022

## IPP owned Thermal Plant Loading at the Night Peak

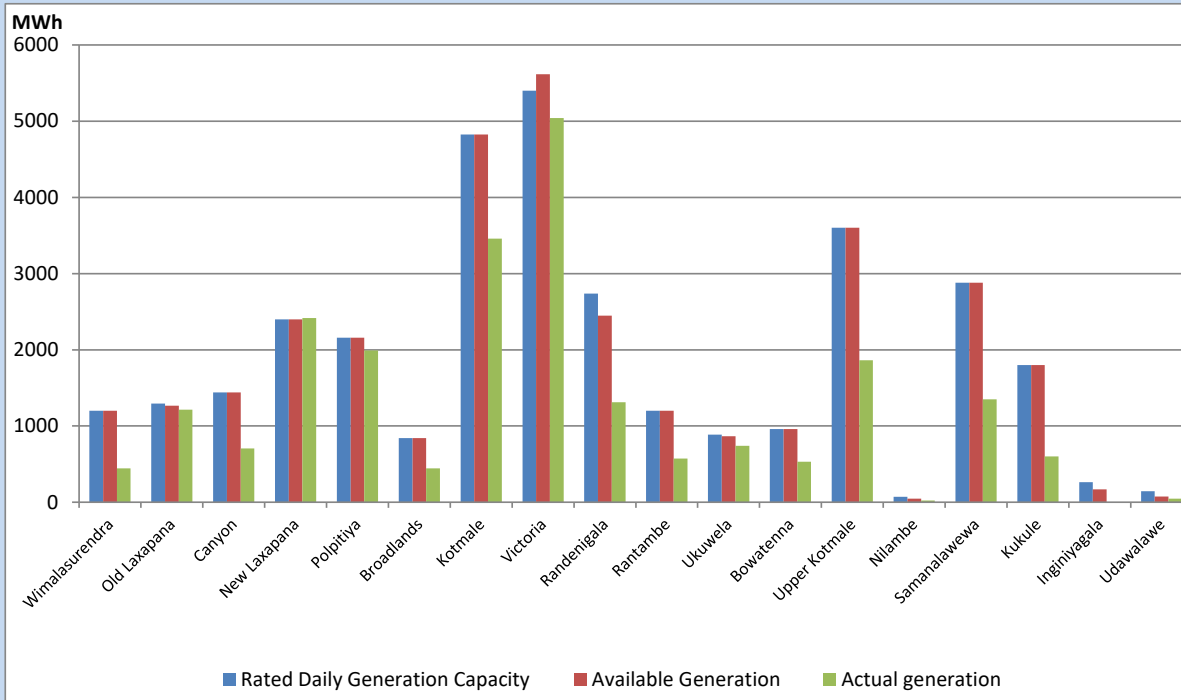


Note- Plant availability is recorded at 6.00 am on

August 25, 2022

## Major Hydro Plant Dispatch

August 24, 2022

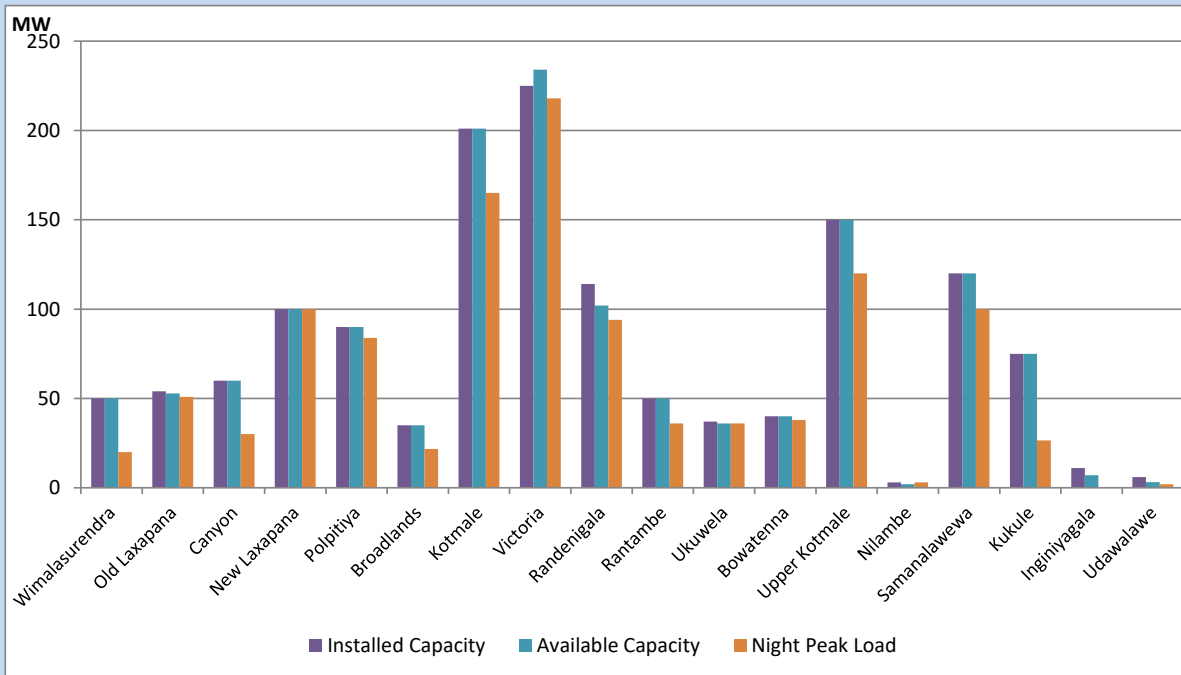


Available Generation is estimated based on plant availability at 6.00am on August 25, 2022  
 Broadlands power plant is operating in the Commissioning Stage

August 25, 2022

## Major Hydro Plant Loading at Night Peak

August 24, 2022



Note- Plant availability is recorded at 6.00 am on August 25, 2022  
 Broadlands power plant is operating in the Commissioning Stage

## Summary of Major Plant performance

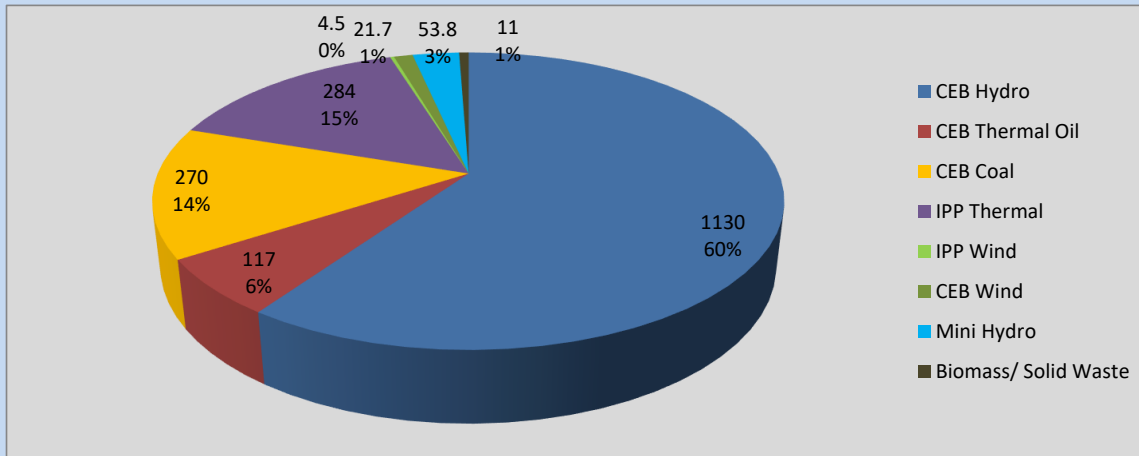
Plant	Installed Capacity	Plant Availability	Night peak Load	Plant Dispatch
	(MW)	(MW)	(MW)	(MWh)
Wimalasurendra	50	50	20	444
Old Laxapana	54	53	51	1,214
Canyon	60	60	30	706
New Laxapana	100	100	100	2,418
Polpitiya	90	90	84	1,993
Broadlands	35	35	22	444
Kotmale	201	201	165	3,460
Victoria	225	234	218	5,042
Randenigala	114	102	94	1,311
Rantambe	50	50	36	574
Ukuwela	37	36	36	741
Bowatenna	40	40	38	532
Upper Kotmale	150	150	120	1,862
Nilambe	3	2	3	24
Samanalawewa	120	120	100	1,350
Kukule	75	75	27	601
Inginiyagala	11	7	0	0
Udawalawe	6	3	2	48
Puttalam Coal I	270	0	0	0
Puttalam Coal II	270	0	0	0
Puttalam Coal III	270	270	270	6,484
KPS Small GTs	64	0	0	0
KPS GT 7	115	0	0	0
KCCP	161	0	0	0
Sapugaskanda A	70	34	31	688
Sapugaskanda B	70	63	59	1,433
Uthura Janani	26	24	23	392
Barge CEB	60	45	4	64
CEB-Thulhiriya	10	0	0	0
CEB-Kolonnawa	20	14	0	0
CEB-Mathugama	20	5	0	0
ACE Matara	24	24	0	37
Sojitz Kelanitissa	163	0	0	0
West Coast	270	270	284	4,523
ACE Embilipitiya	93	0	0	0
<b>Total</b>	<b>3,397</b>	<b>2,156</b>	<b>1,907</b>	<b>39,726</b>

Plant availability is the availability recorded at 6 am on

August 25, 2022

## Contribution to the Night Peak in MW

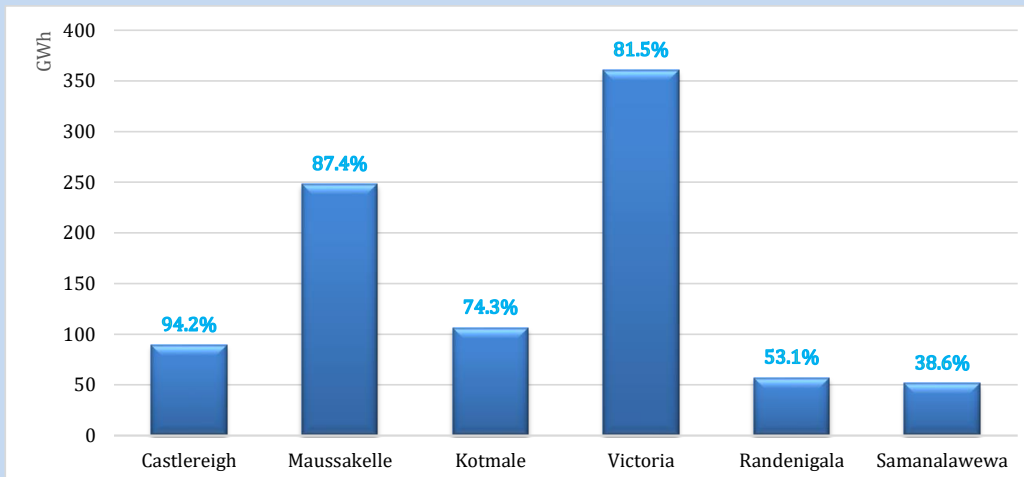
August 24, 2022



Night Peak*	1,892.0 MW
Day Peak	1,922.6 MW
Minimum Demand	1,268.0 MW

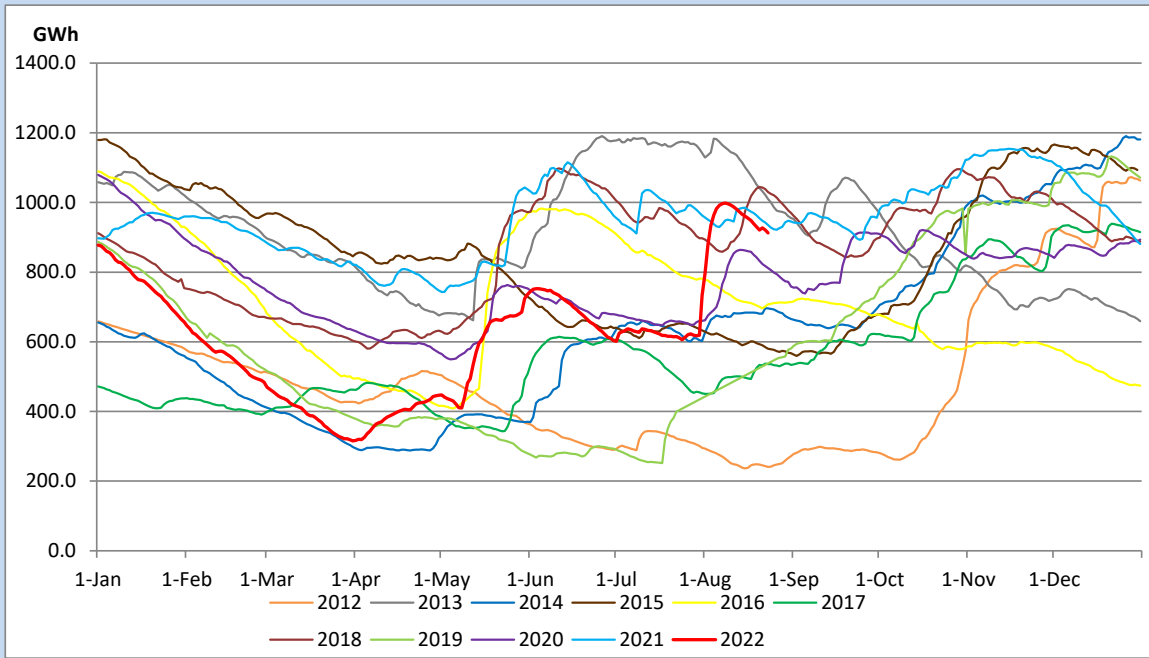
Above figures are excluding contribution from Roof Top Solar, 1MW solar, certain Wind plants and Mini Hydro plants

## Reservoir Levels - as at 06.00 Hr on August 25, 2022

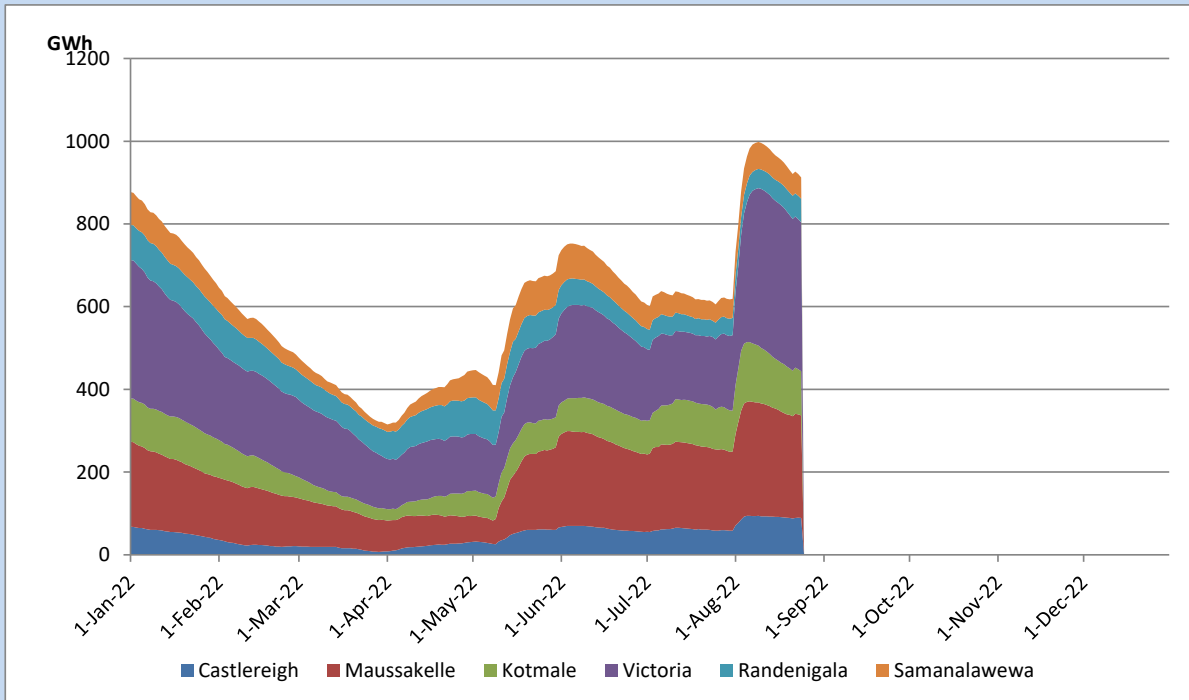


Total Reservoir Level	912.6 GWh
% of Total capacity	75.8%

## Comparison of Total Reservoir Storage Levels with Past Years

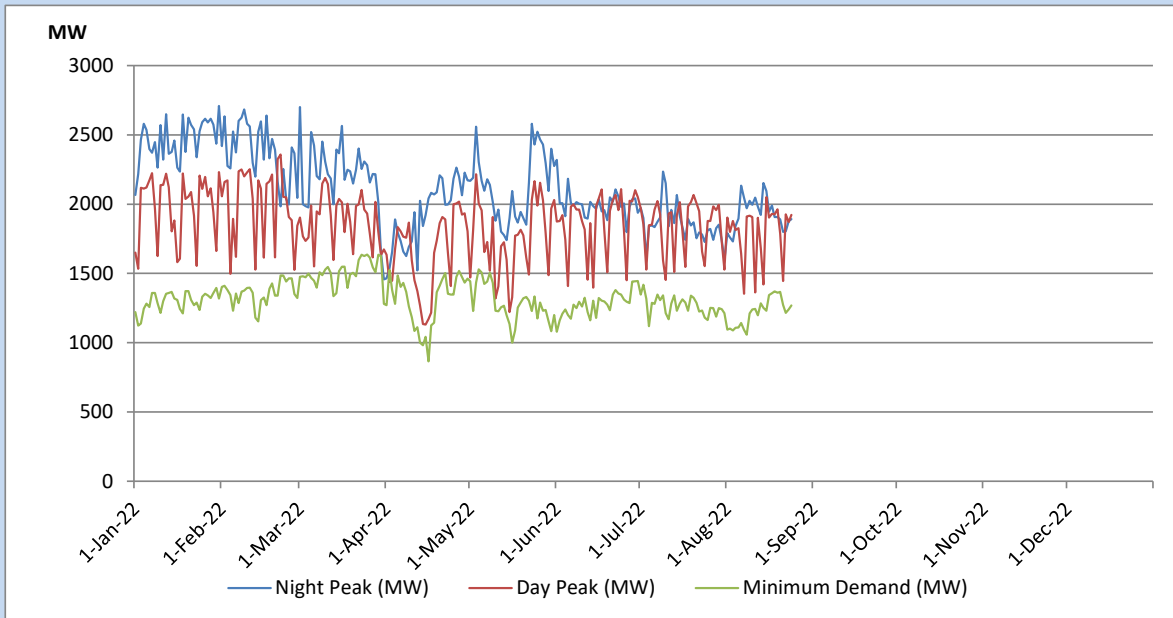


## Variation of Major Hydro Reservoir Levels in the current year (GWh)





## Variation of Demand during the current year

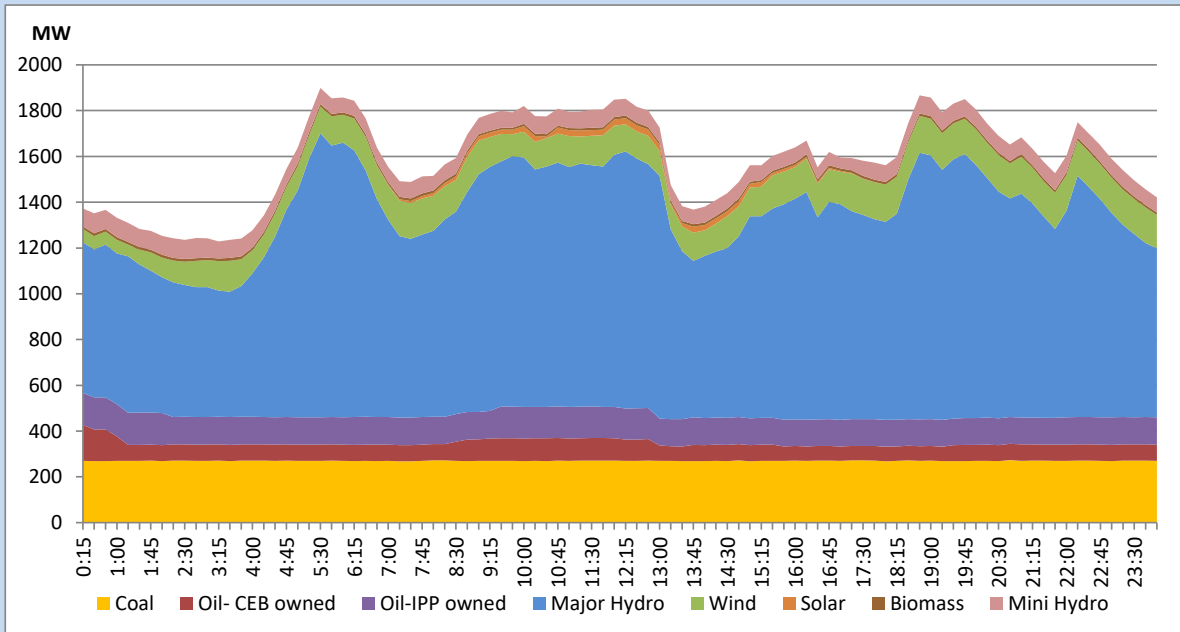


The above figures are excluding contribution from Roof Top Solar, 1MW solar, certain Wind plants and Mini Hydro plants

## Daily Load Curve of the Previous day

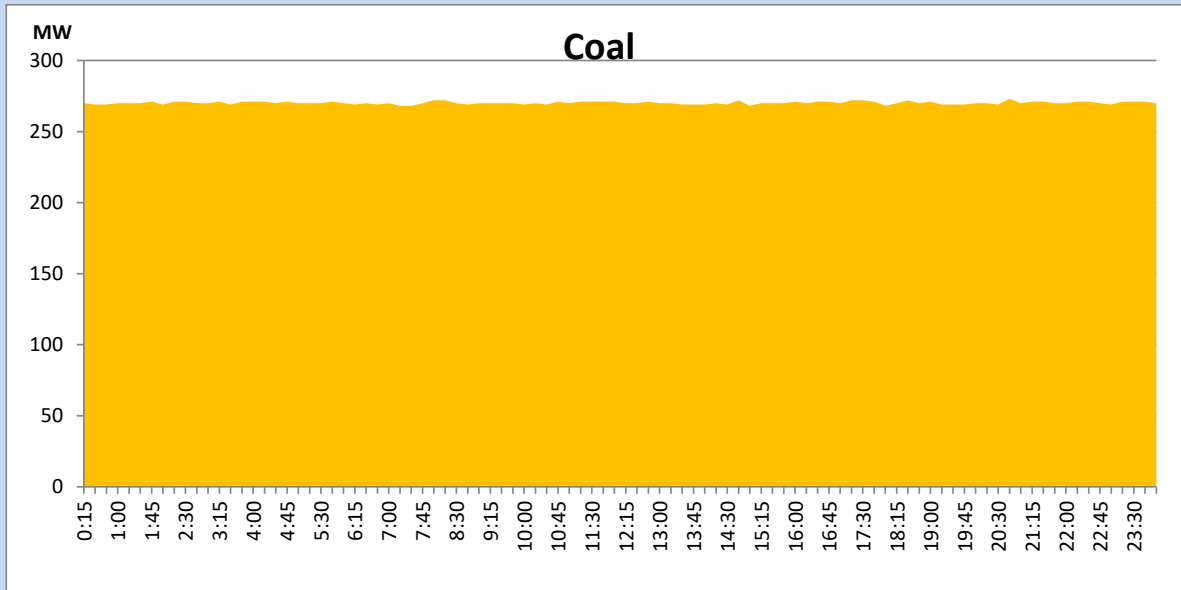
August 23, 2022

Solar and wind data is based on Telemetered Power Stations only



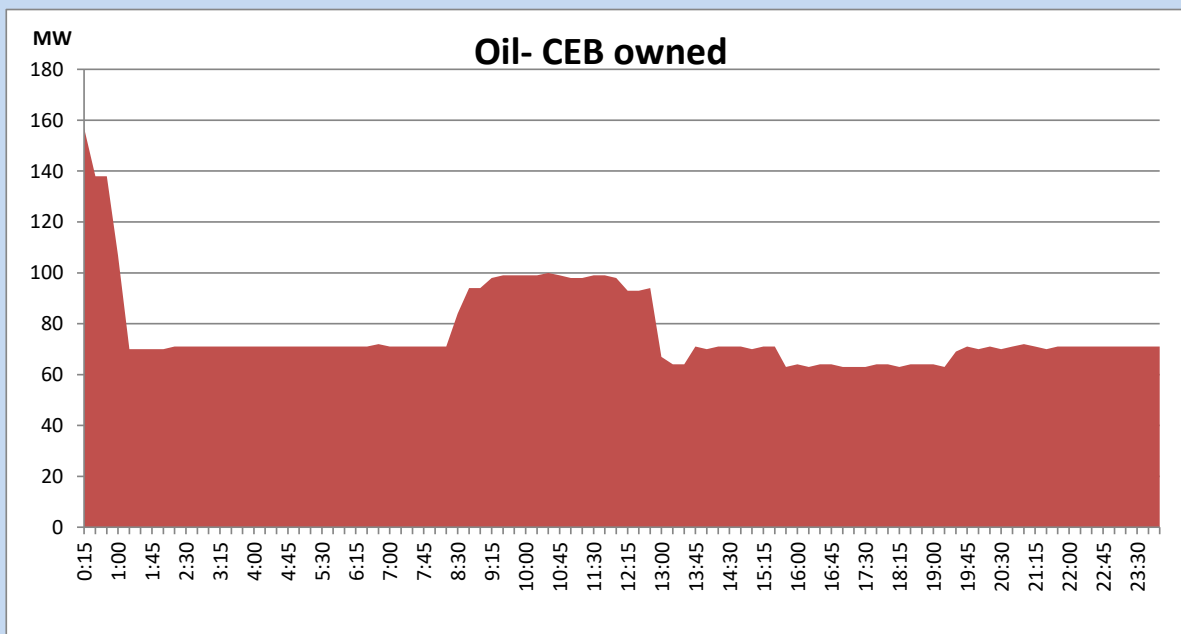
## Coal Generation during the Previous day

August 23, 2022



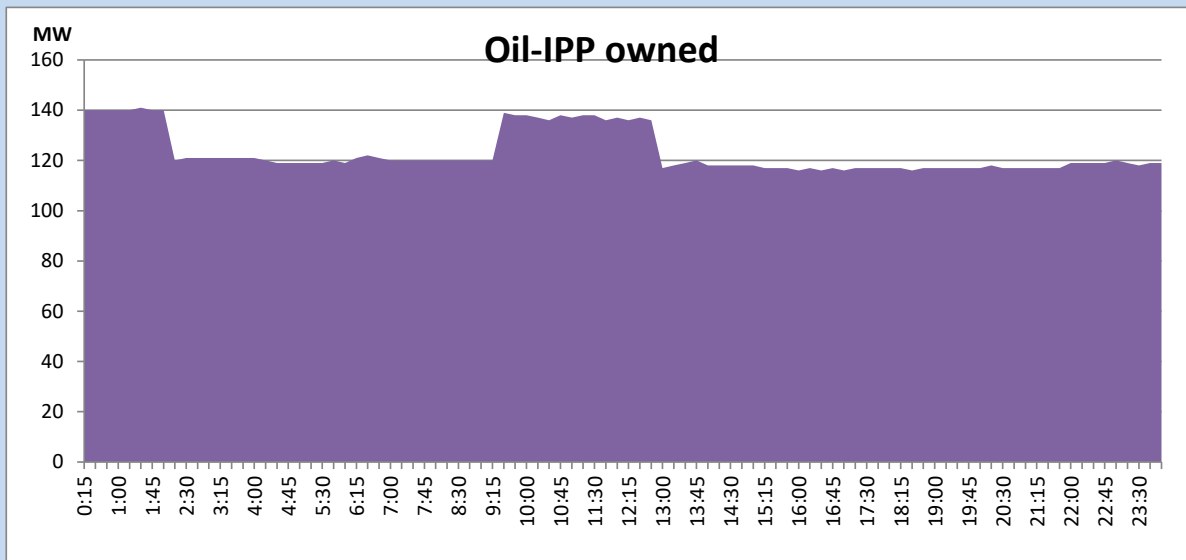
## CEB Oil Plant Generation during the Previous day

August 23, 2022



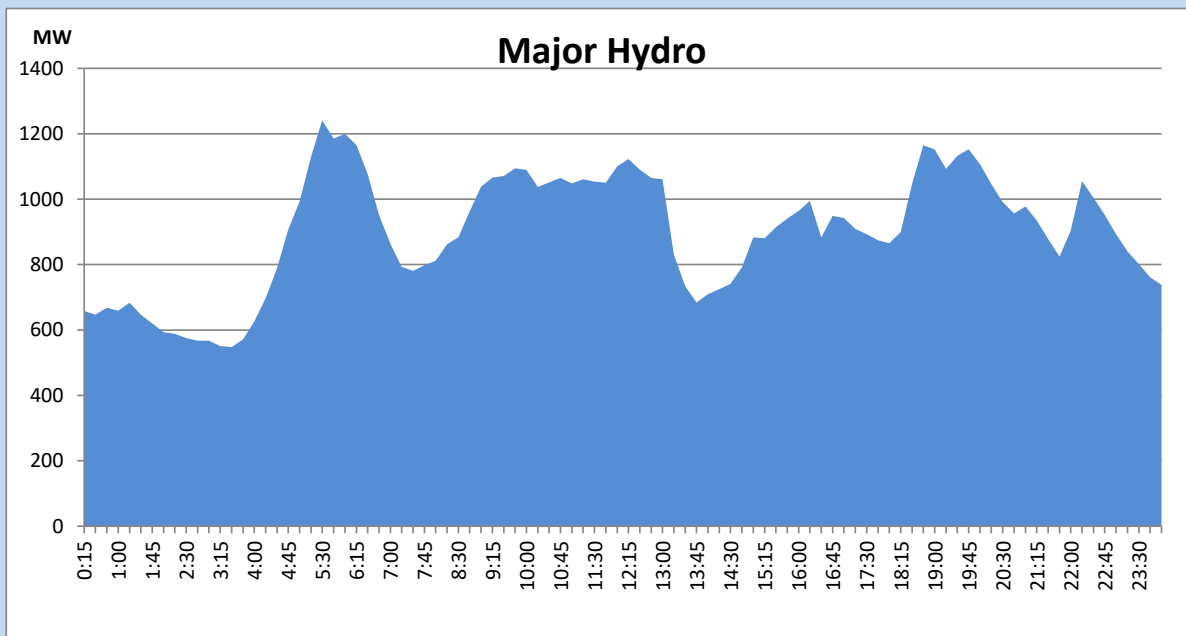
## IPP Oil Plant Generation during the Previous day

August 23, 2022



## Major Hydro Generation during the Previous day

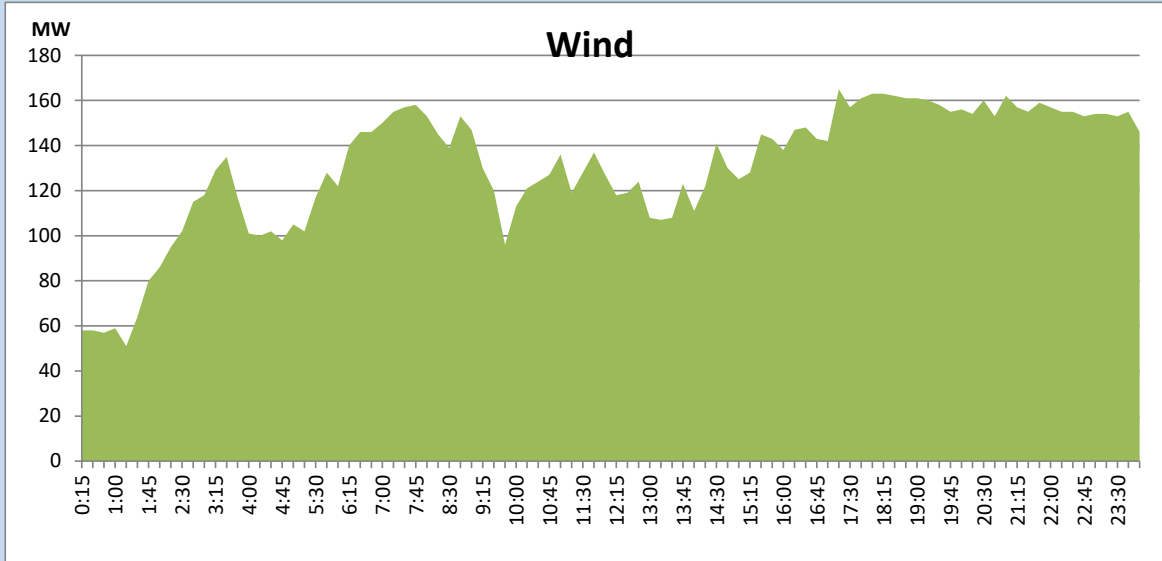
August 23, 2022



## Wind Generation during the Previous day

August 23, 2022

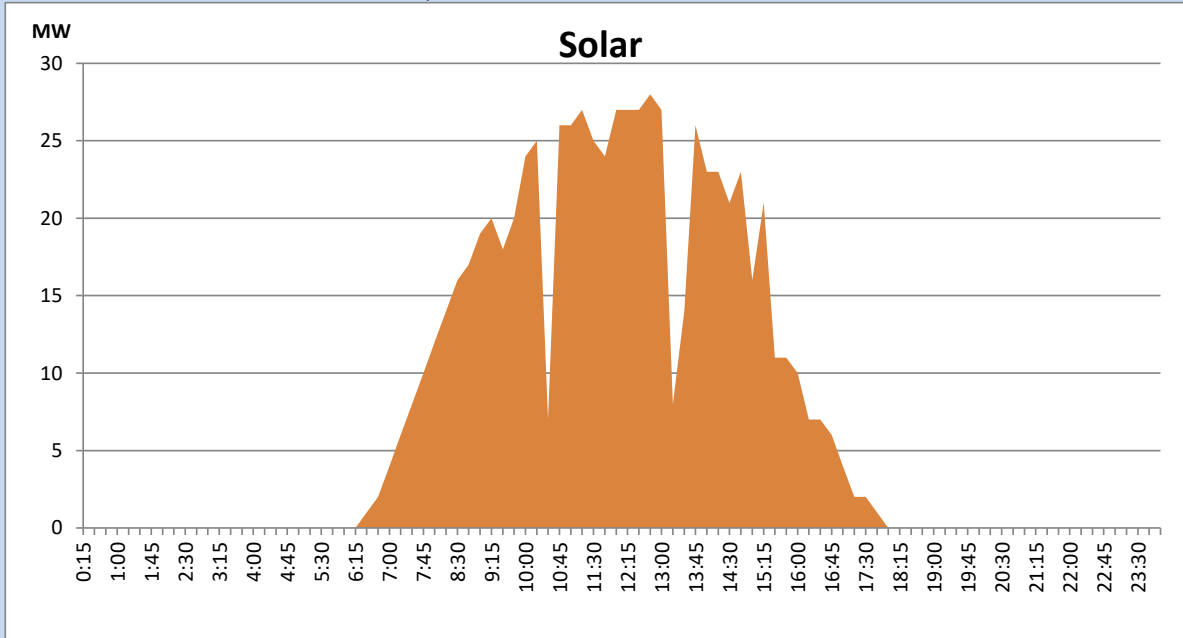
Based on Telemetered Power Stations only



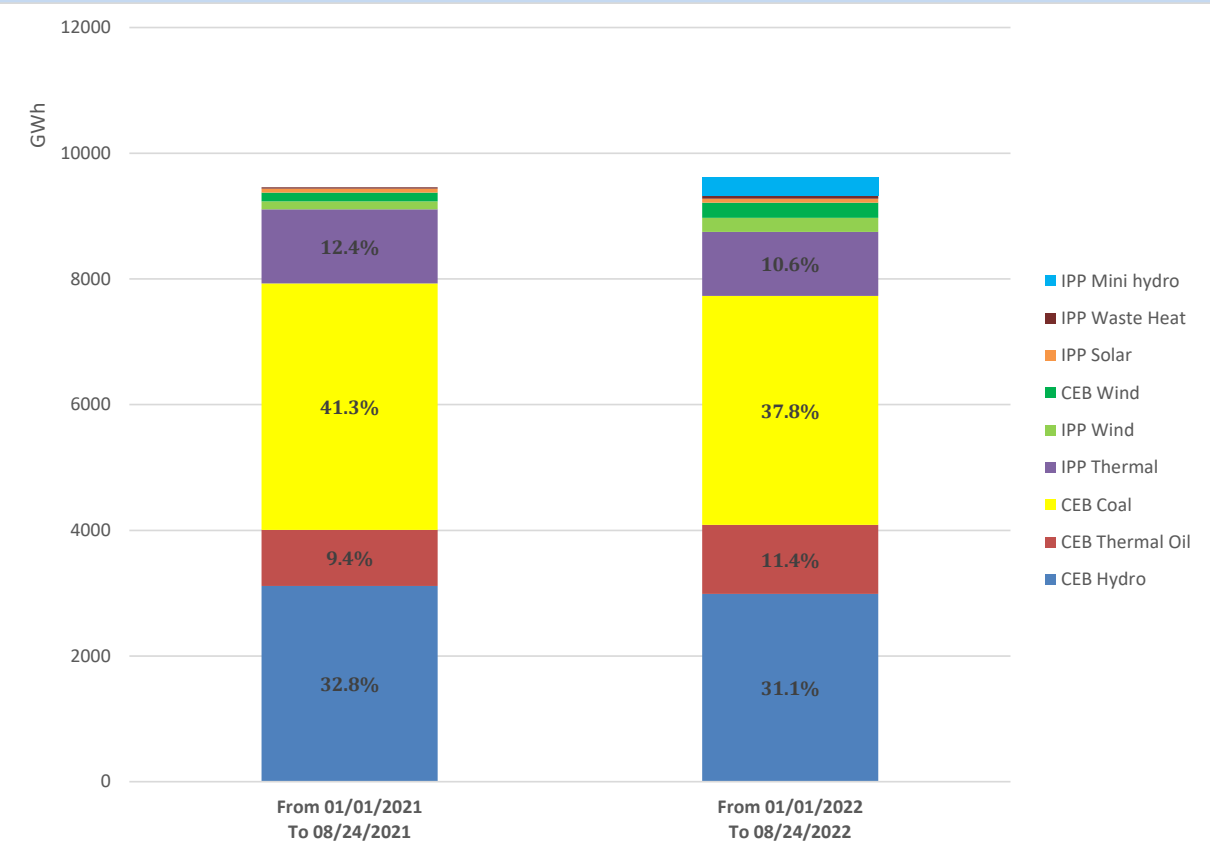
## Solar Generation during the Previous day

August 23, 2022

Based on Telemetered Power Stations only



# Cumulative Dispatch Comparison with Last Year



## Thermal Plant Fuel types

Power Station	Primary Fuel
CEB Thermal	
Sapugaskanda 1	Heavy Fuel
Sapugaskanda 2	Heavy Fuel
Kelanitissa Small Gas Turbines	Auto Diesel
GT 7 - Kelanitissa	Auto Diesel
Kelanitissa CCY	Naphtha or Diesel
Lakvijaya 1	Coal
Lakvijaya 2	Coal
Lakvijaya 3	Coal
Uthuru Janani	Heavy Fuel
Barge CEB	Heavy Fuel

Power Station	Primary Fuel
Private Thermal	
Sojitz - Kelanitissa	Auto Diesel
West Coast	Auto Diesel / Heavy Fuel
ACE Matara	Heavy Fuel
ACE Embilipitiya	Heavy Fuel

## Major Incidents during the day -as reported by CEB morning of

August 25, 2022

- 1) Rotational manual load shedding was carried out from 05:30 hrs to 08:30 hrs and 13:00 hrs to 22:00 hrs.
- 2) Puttalam 132/33kV T/F 02 and 33kV B/S CB tripped with 33kV feeder 01 at 21:16 hrs due to the operation of Earth Fault protection, causing feeders 5,6,7, and 8 to be dead. 33kV B/S CB and feeders 5,6,7 and 8 were restored by 21:31 hrs. Feeder 1 was restored at 22:09 hrs T/F 02 was restored at 23:08 hrs.