

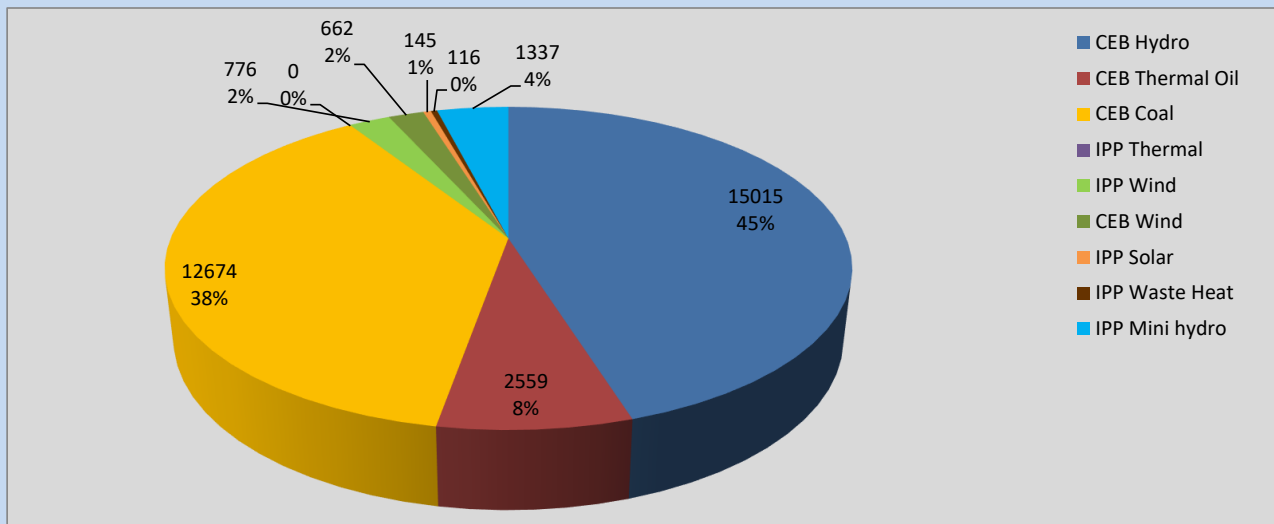
# Generation and Reservoirs Statistics

July 24, 2022



PUBLIC UTILITIES COMMISSION OF SRI LANKA

## Daily Generation Mix in MWh



Total Generation **33,284 MWh**

Note: Above data is excluding contribution from Roof Top Solar, 1MW Solar and certain Mini Hydro plants

## Cumulative Dispatch

Note: Following data is Excluding contribution from Roof Top Solar, 1MW solar and Mini Hydro plants

### For Current Month

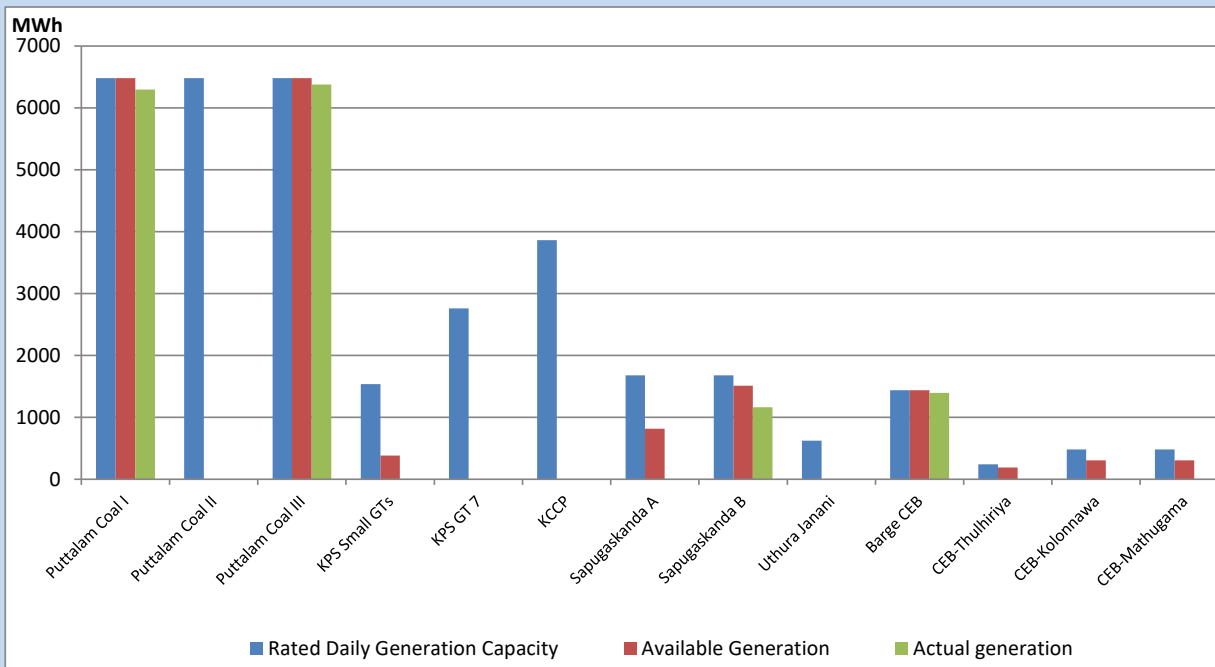
Category	Dispatch (GWh)	Percentage
CEB Hydro	338.48	36.74%
CEB Thermal Oil	90.75	9.85%
CEB Coal	301.61	32.74%
IPP Thermal	78.40	8.51%
SPP Wind	31.79	3.45%
CEB Wind	32.49	3.53%
SPP Solar	6.23	0.68%
SPP Solid Waste	5.01	0.54%
Mini Hydro	36.54	3.97%
<b>Total</b>	<b>921.30</b>	

### For Current Year

Category	Dispatch (GWh)	Percentage
CEB Hydro	2,389.8	28.35%
CEB Thermal Oil	1,030.9	12.23%
CEB Coal	3,329.9	39.51%
IPP Thermal	950.0	11.27%
SPP Wind	181.7	2.16%
CEB Wind	198.4	2.35%
SPP Solar	52.7	0.62%
SPP Solid Waste	43.5	0.52%
Mini Hydro	252.1	2.99%
<b>Total</b>	<b>8,428.7</b>	

## CEB owned Thermal Plant Dispatch

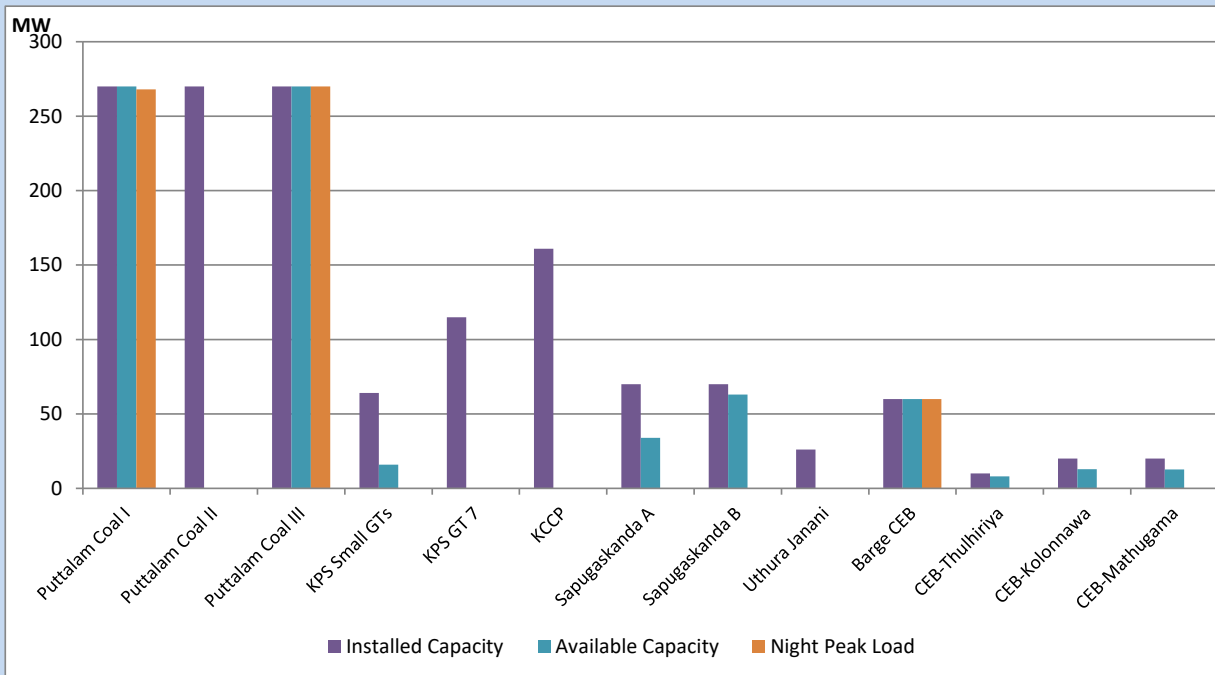
July 24, 2022



Available Generation is estimated based on plant availability at 6.00am on

July 25, 2022

## CEB owned Thermal Plant Loading at the Night Peak



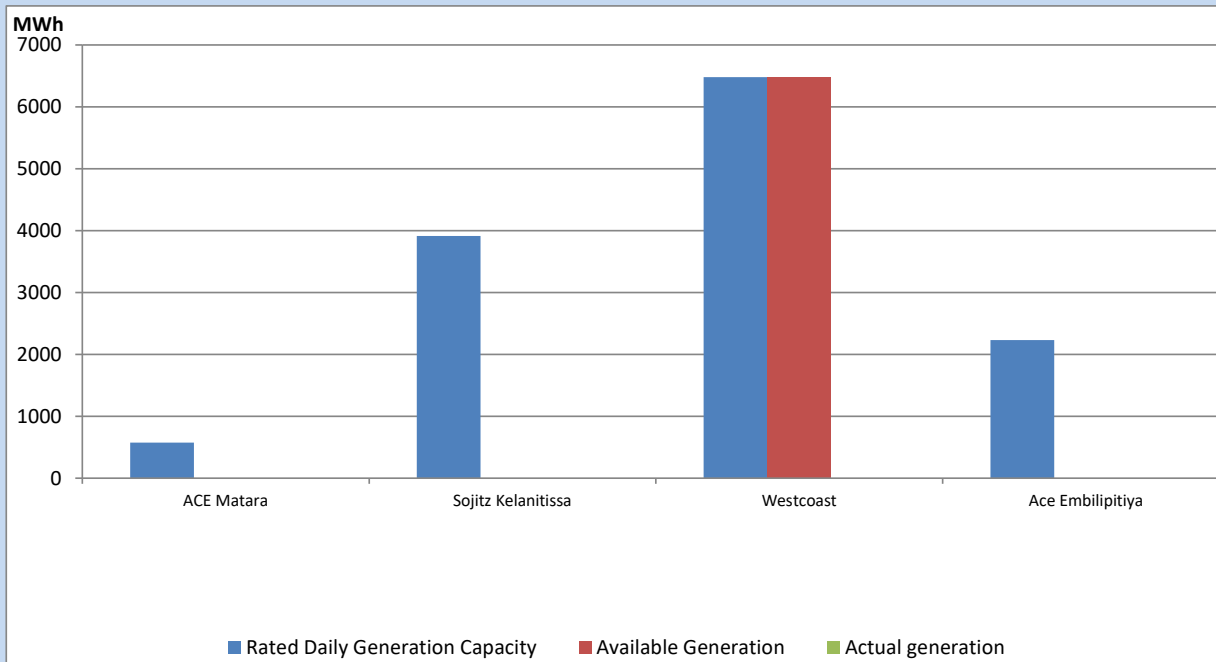
Note- Plant availability is recorded at 6.00 am on

July 25, 2022

## IPP owned Thermal Plant Dispatch

July 24, 2022

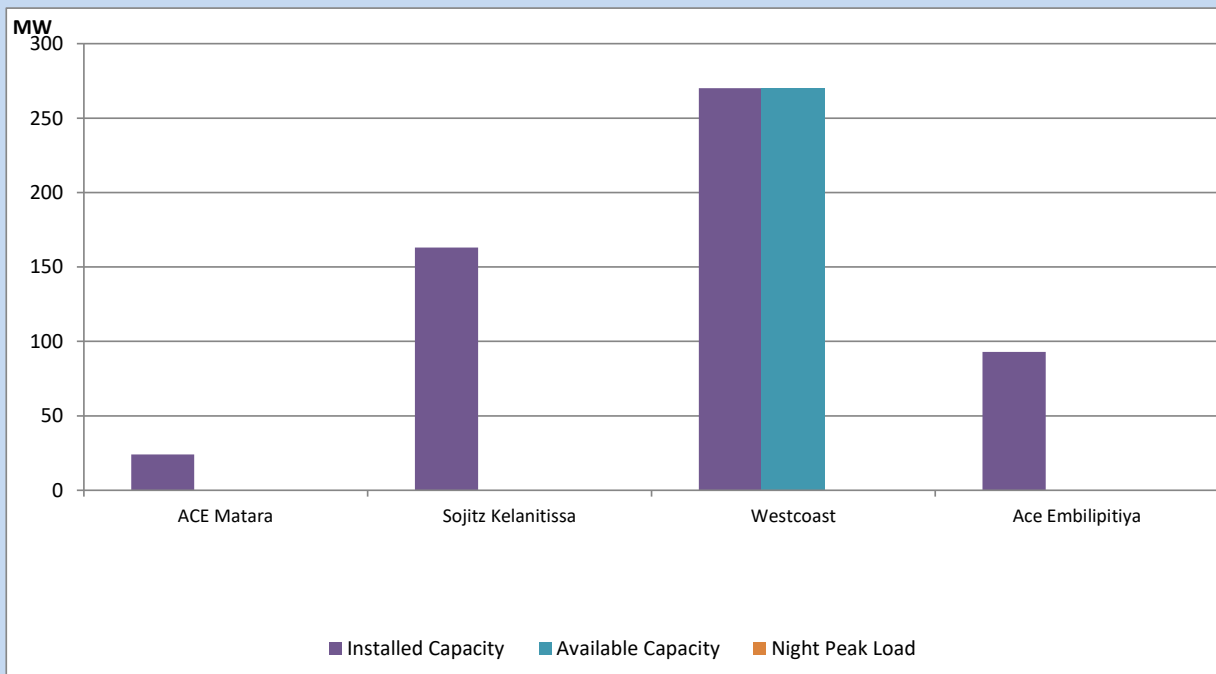
Asia Power, V Power Pallekale, Vpower Galle, V Power Horana, Vpower Hambantota, Vpower Valachchena and Altaqa Mahiyanganaya are not available due to expiration of PPAs



Available Generation is estimated based on plant availability at 6.00am on

July 25, 2022

## IPP owned Thermal Plant Loading at the Night Peak

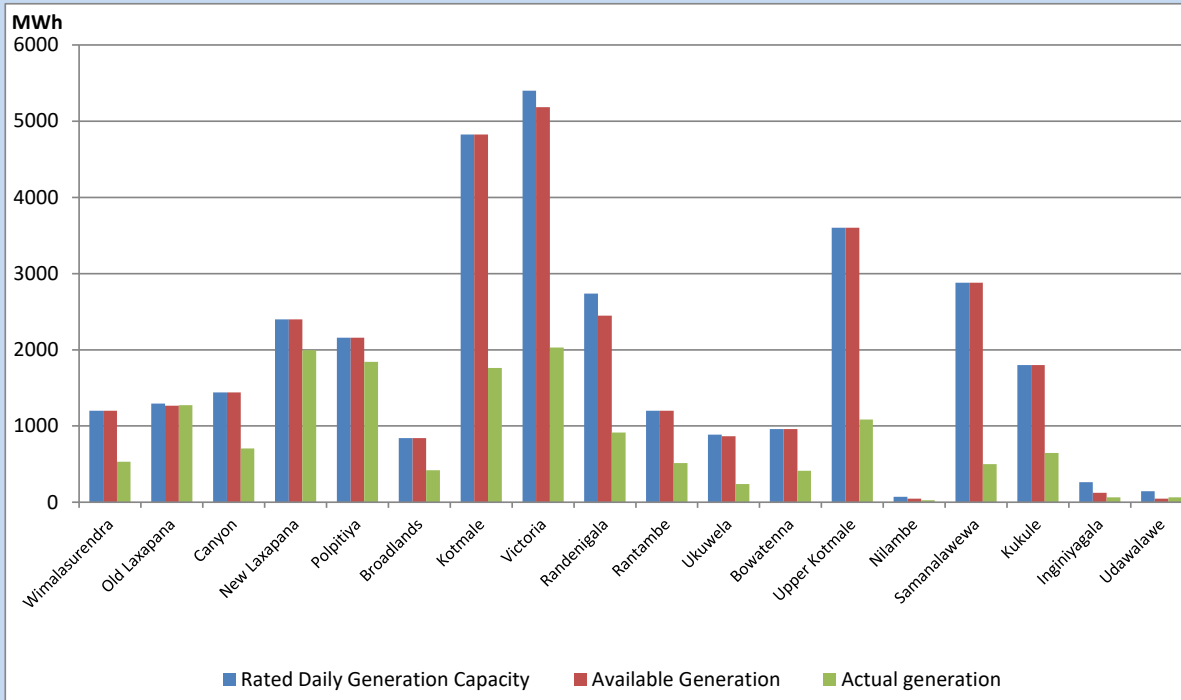


Note- Plant availability is recorded at 6.00 am on

July 25, 2022

## Major Hydro Plant Dispatch

July 24, 2022

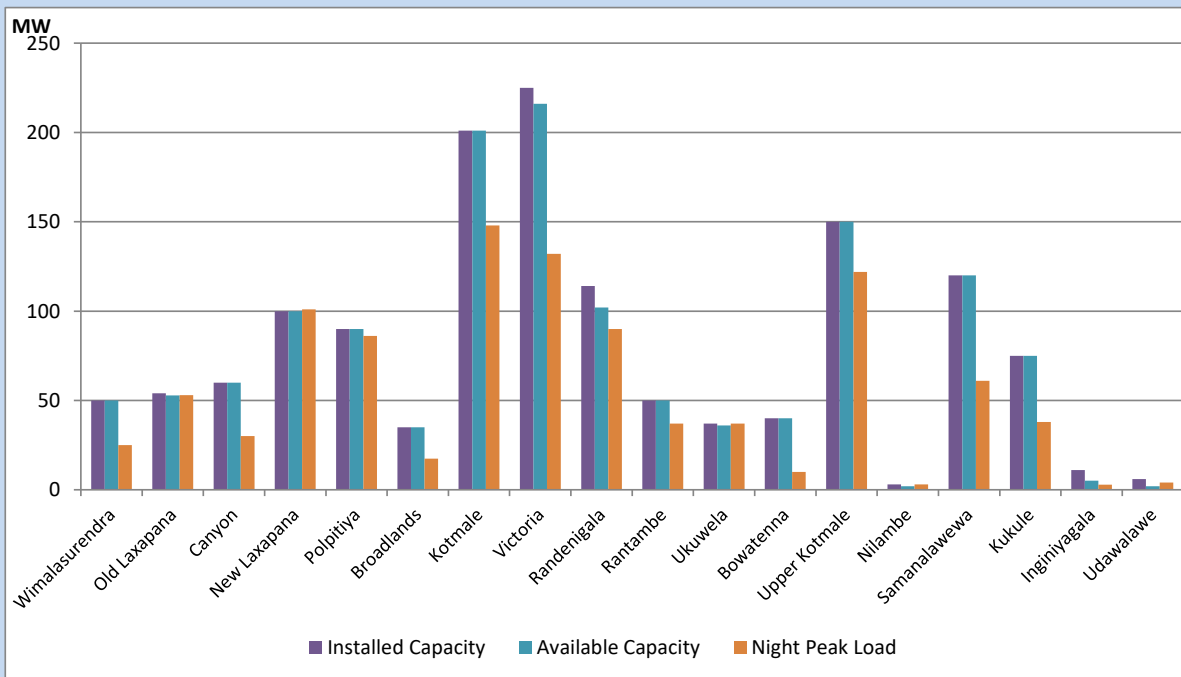


Available Generation is estimated based on plant availability at 6.00am on  
Broadlands power plant is operating in the Commissioning Stage

July 25, 2022

## Major Hydro Plant Loading at Night Peak

July 24, 2022



Note- Plant availability is recorded at 6.00 am on  
Broadlands power plant is operating in the Commissioning Stage

July 25, 2022

## Summary of Major Plant performance

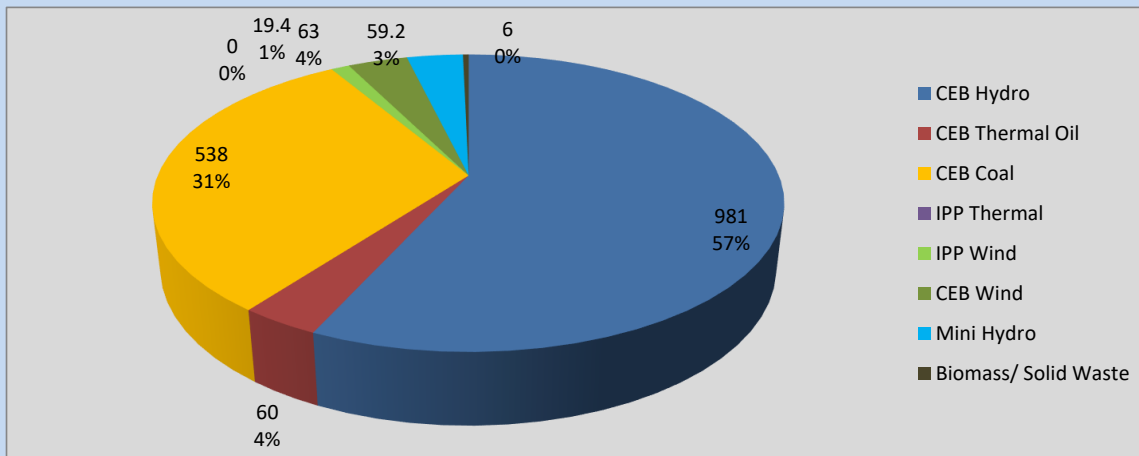
Plant	Installed Capacity	Plant Availability	Night peak Load	Plant Dispatch
	(MW)	(MW)	(MW)	(MWh)
Wimalasurendra	50	50	25	531
Old Laxapana	54	53	53	1,272
Canyon	60	60	30	705
New Laxapana	100	100	101	1,996
Polpitiya	90	90	86	1,840
Broadlands	35	35	17	419
Kotmale	201	201	148	1,760
Victoria	225	216	132	2,029
Randenigala	114	102	90	916
Rantambe	50	50	37	512
Ukuwela	37	36	37	238
Bowatenna	40	40	10	411
Upper Kotmale	150	150	122	1,085
Nilambe	3	2	3	27
Samanalawewa	120	120	61	500
Kukule	75	75	38	645
Inginiyagala	11	5	3	64
Udawalawe	6	2	4	65
Puttalam Coal I	270	270	268	6,297
Puttalam Coal II	270	0	0	0
Puttalam Coal III	270	270	270	6,377
KPS Small GTs	64	16	0	0
KPS GT 7	115	0	0	0
KCCP	161	0	0	0
Sapugaskanda A	70	34	0	0
Sapugaskanda B	70	63	0	1,164
Uthura Janani	26	0	0	0
Barge CEB	60	60	60	1,395
CEB-Thulhiriya	10	8	0	0
CEB-Kolonnawa	20	13	0	0
CEB-Mathugama	20	13	0	0
ACE Matara	24	0	0	0
Sojitz Kelanitissa	163	0	0	0
West Coast	270	270	0	0
ACE Embilipitiya	93	0	0	0
<b>Total</b>	<b>3,397</b>	<b>2,403</b>	<b>1,743</b>	<b>33,284</b>

Plant availability is the availability recorded at 6 am on

July 25, 2022

## Contribution to the Night Peak in MW

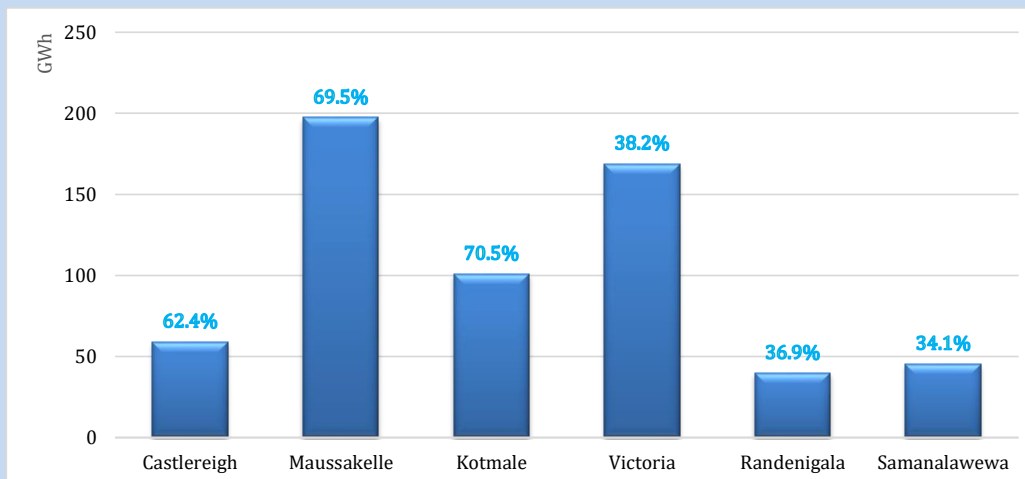
July 24, 2022



Night Peak*	1,726.8 MW
Day Peak	1,552.9 MW
Minimum Demand	1,181.0 MW

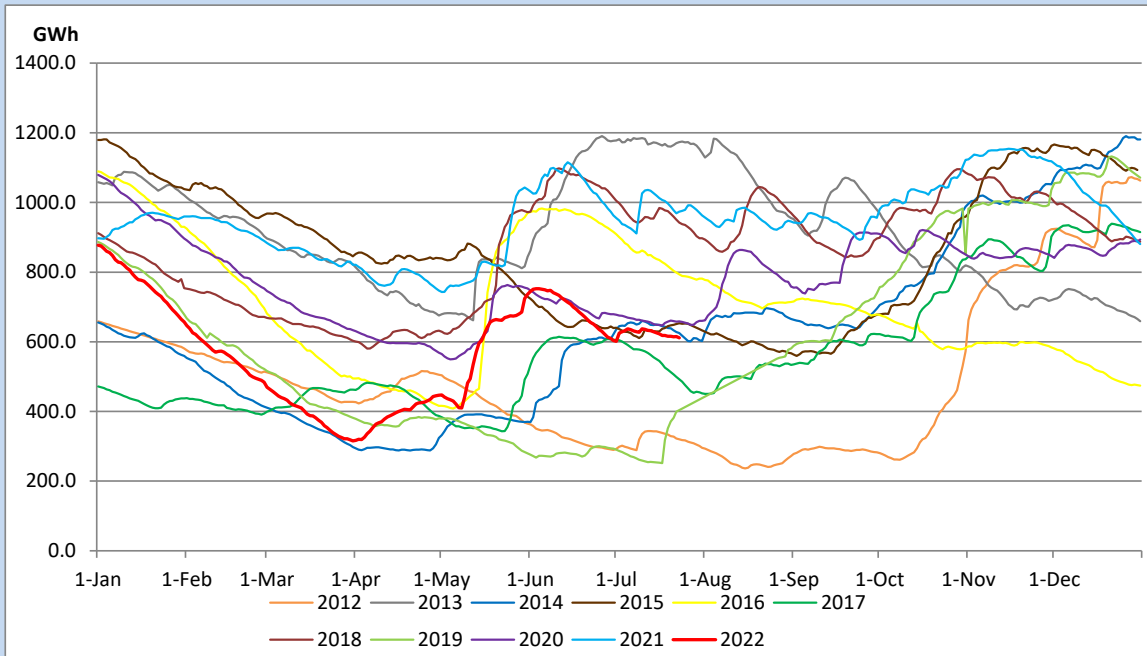
Above figures are excluding contribution from Roof Top Solar, 1MW solar, certain Wind plants and Mini Hydro plants

## Reservoir Levels - as at 06.00 Hr on July 25, 2022

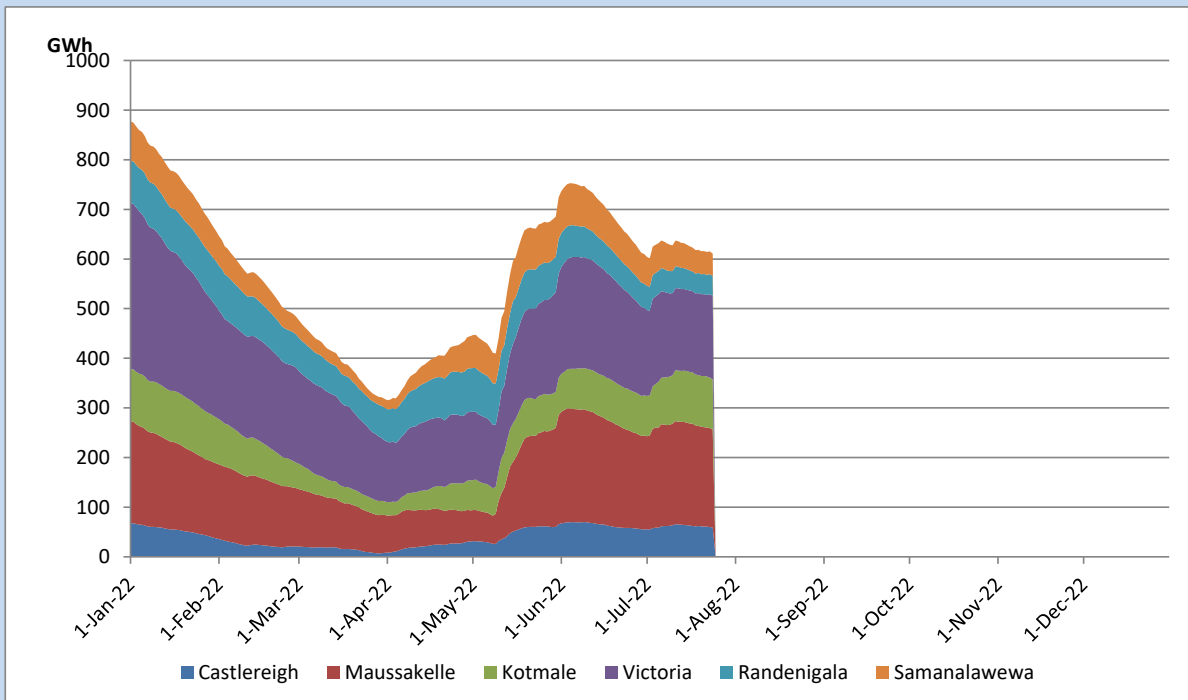


Total Reservoir Level	611.3 GWh
% of Total capacity	50.7%

## Comparison of Total Reservoir Storage Levels with Past Years

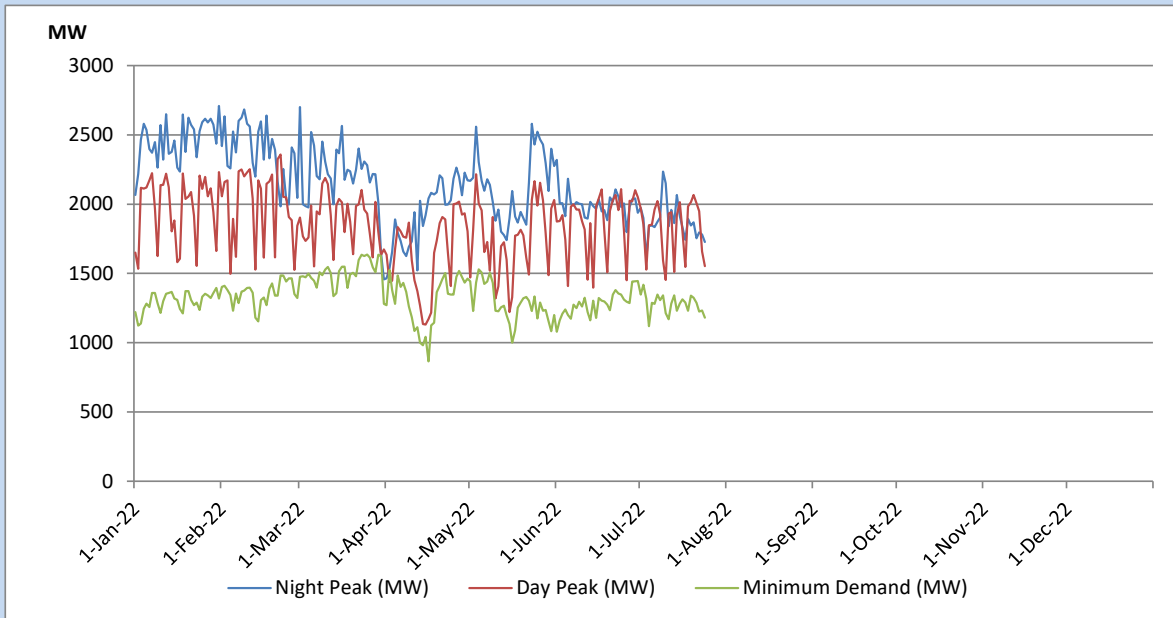


## Variation of Major Hydro Reservoir Levels in the current year (GWh)





## Variation of Demand during the current year

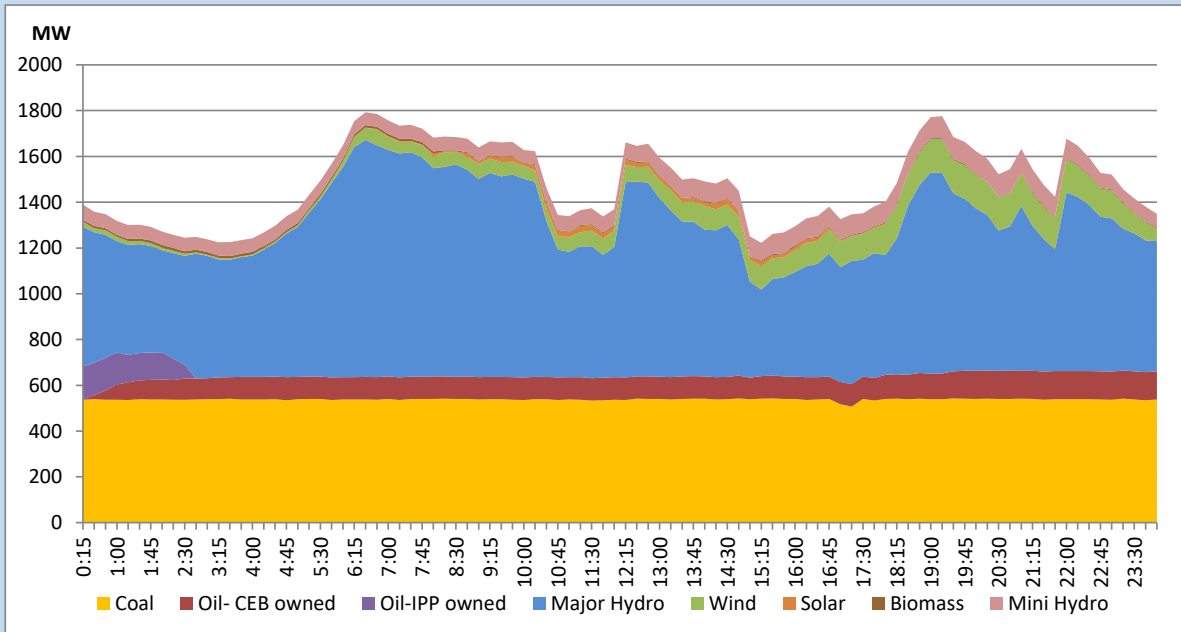


The above figures are excluding contribution from Roof Top Solar, 1MW solar, certain Wind plants and Mini Hydro plants

## Daily Load Curve of the Previous day

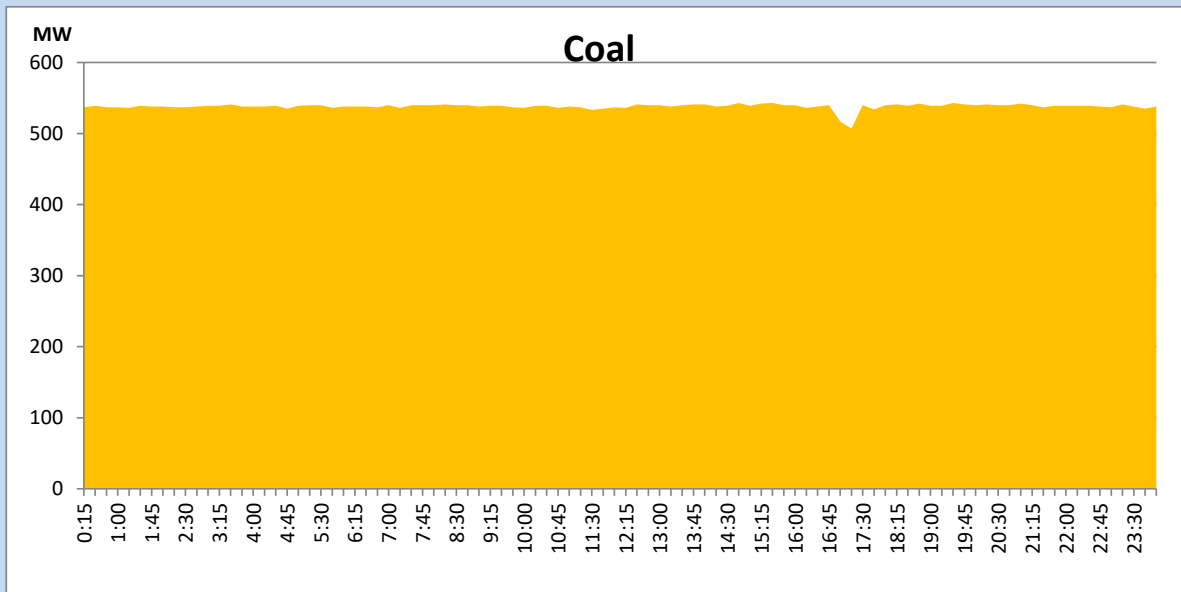
July 23, 2022

Solar and wind data is based on Telemetered Power Stations only



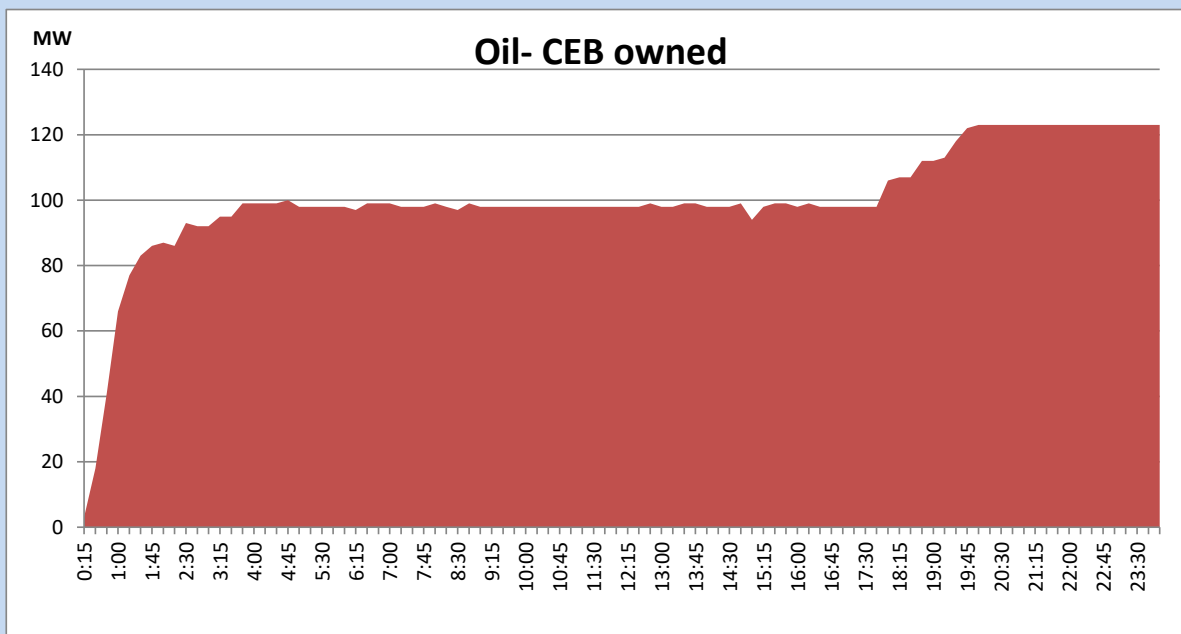
## Coal Generation during the Previous day

July 23, 2022



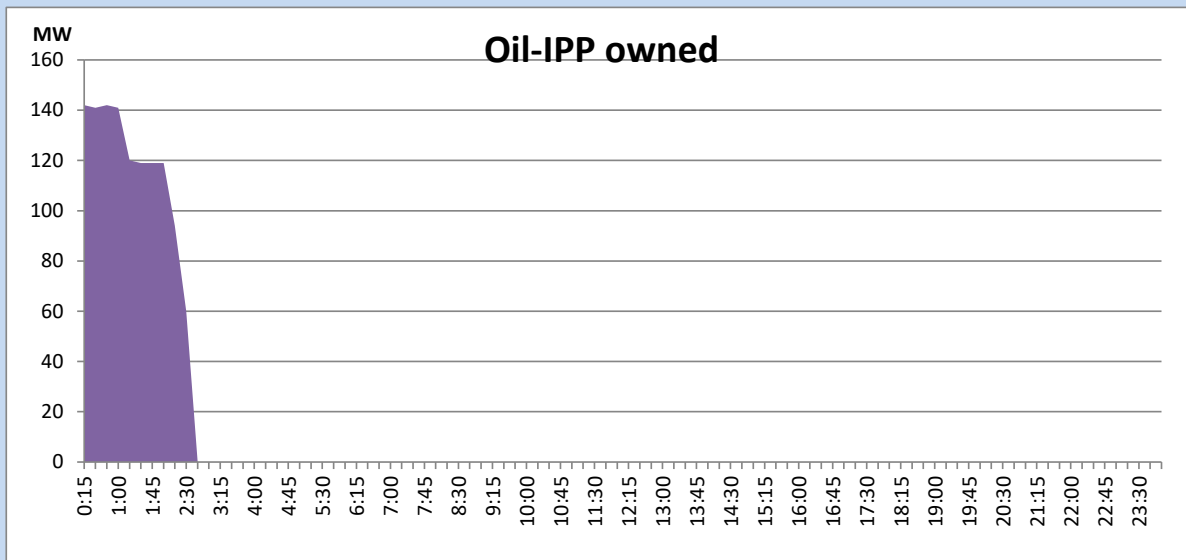
## CEB Oil Plant Generation during the Previous day

July 23, 2022



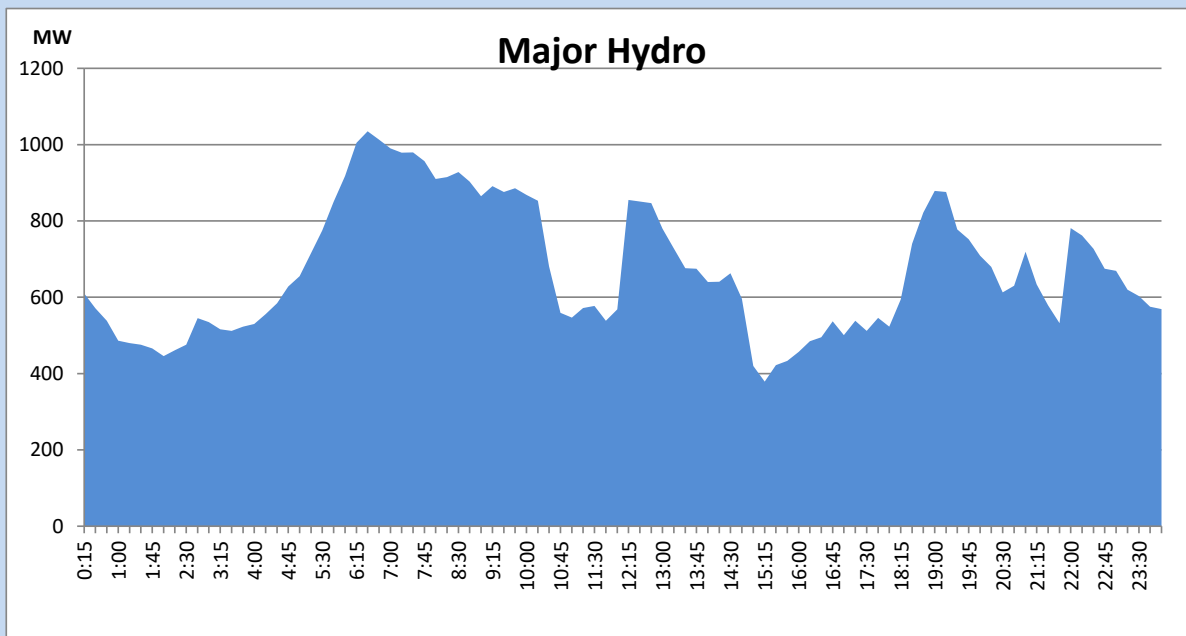
## IPP Oil Plant Generation during the Previous day

July 23, 2022



## Major Hydro Generation during the Previous day

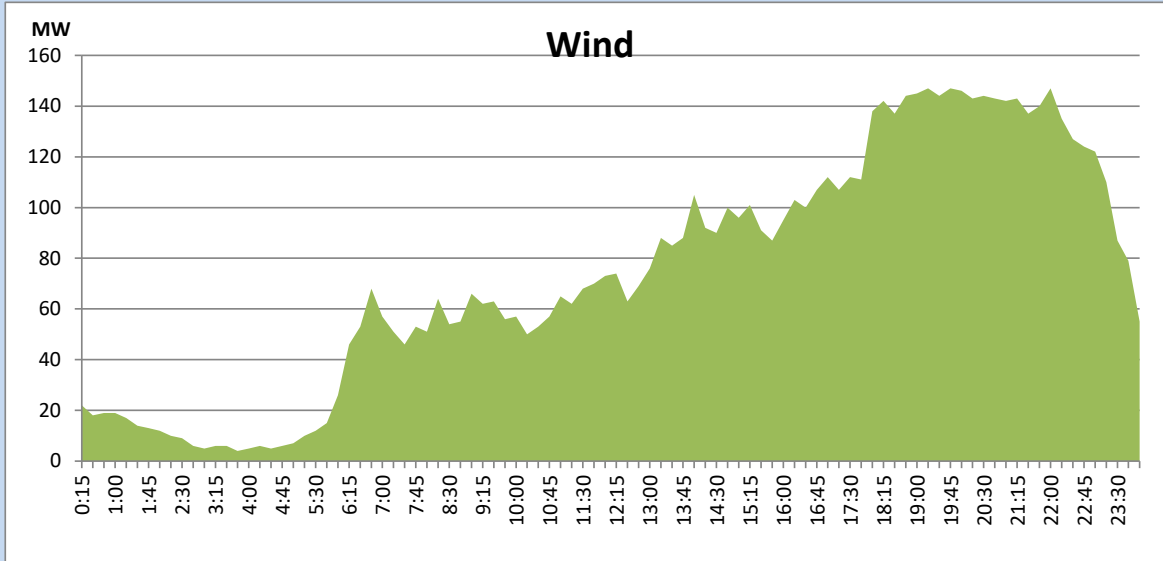
July 23, 2022



## Wind Generation during the Previous day

July 23, 2022

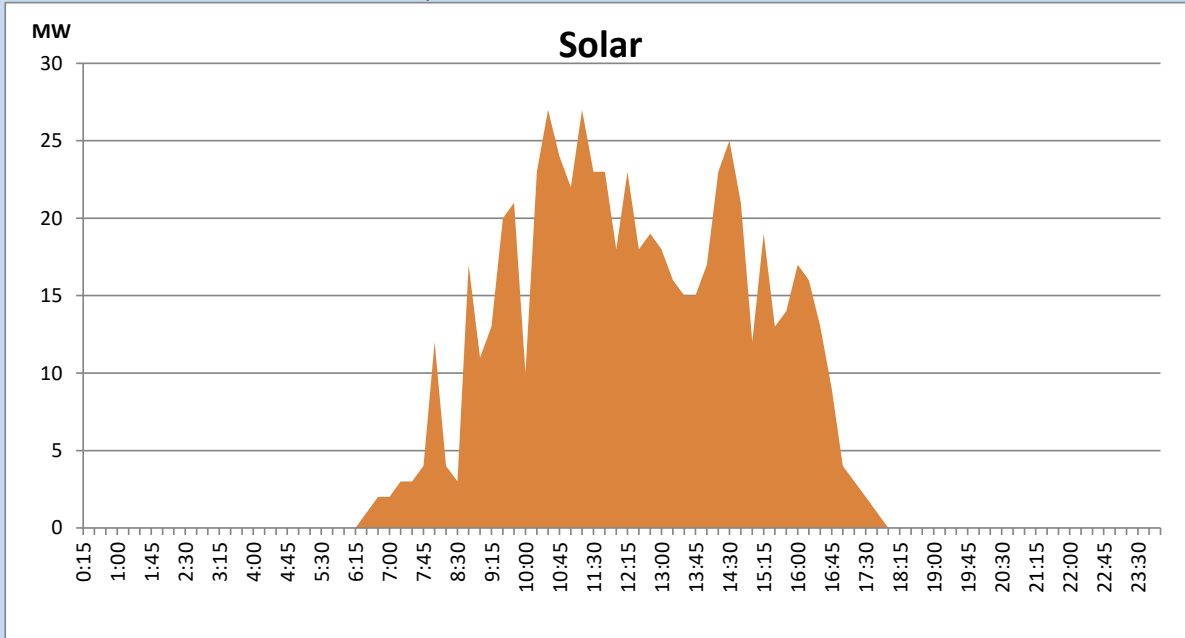
Based on Telemetered Power Stations only



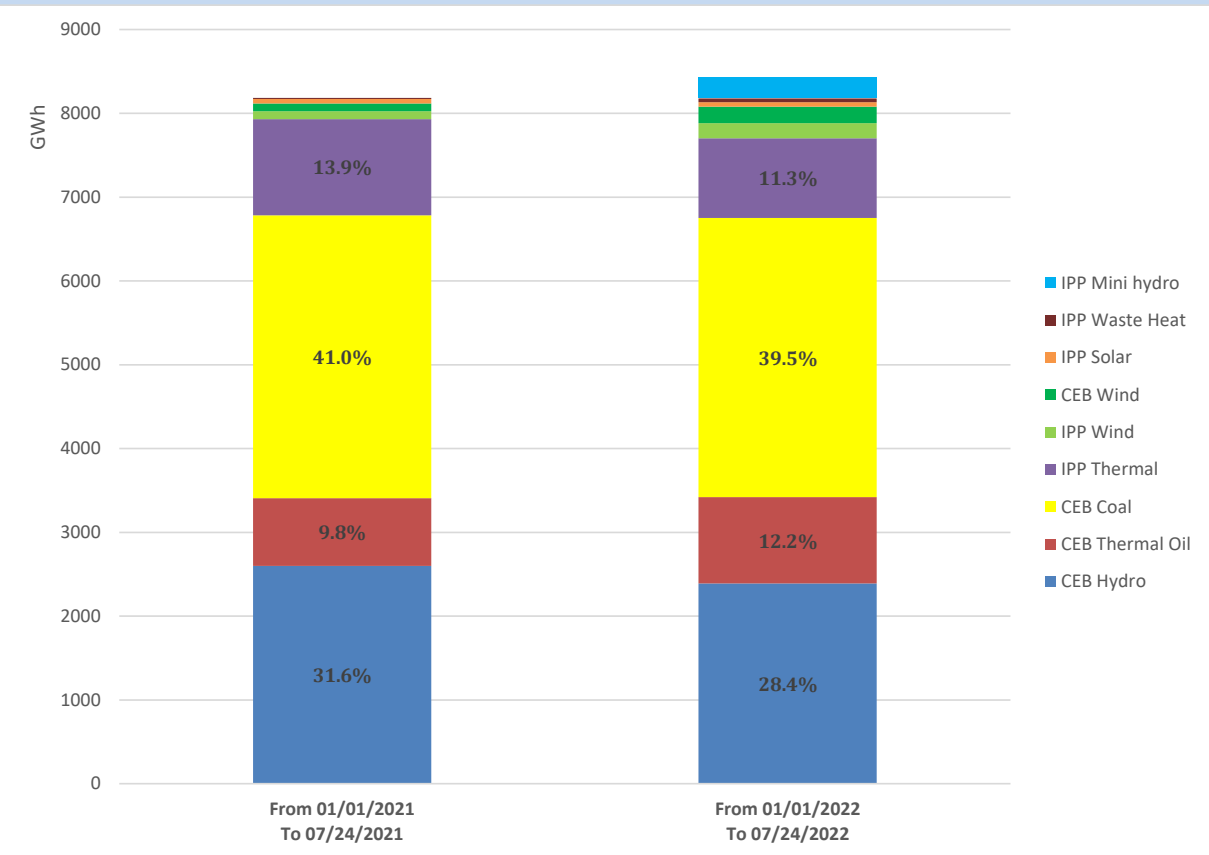
## Solar Generation during the Previous day

July 23, 2022

Based on Telemetered Power Stations only



# Cumulative Dispatch Comparison with Last Year



## Thermal Plant Fuel types

Power Station	Primary Fuel
CEB Thermal	
Sapugaskanda 1	Heavy Fuel
Sapugaskanda 2	Heavy Fuel
Kelanitissa Small Gas Turbines	Auto Diesel
GT 7 - Kelanitissa	Auto Diesel
Kelanitissa CCY	Naphtha or Diesel
Lakvijaya 1	Coal
Lakvijaya 2	Coal
Lakvijaya 3	Coal
Uthuru Janani	Heavy Fuel
Barge CEB	Heavy Fuel

Power Station	Primary Fuel
Private Thermal	
Sojitz - Kelanitissa	Auto Diesel
West Coast	Auto Diesel / Heavy Fuel
ACE Matara	Heavy Fuel
ACE Embilipitiya	Heavy Fuel

## Major Incidents during the day -as reported by CEB morning of

July 25, 2022

- 1) Rotational manual load shedding was carried out from 10:20 hrs to 12:00 hrs and 14:40 hrs to 22:00 hrs.
- 2) N'Chillaw-LVPS cct 01 tripped from N'Chillaw side only at 17:43hrs without any indication. The cct was restored at 17:49hrs.