

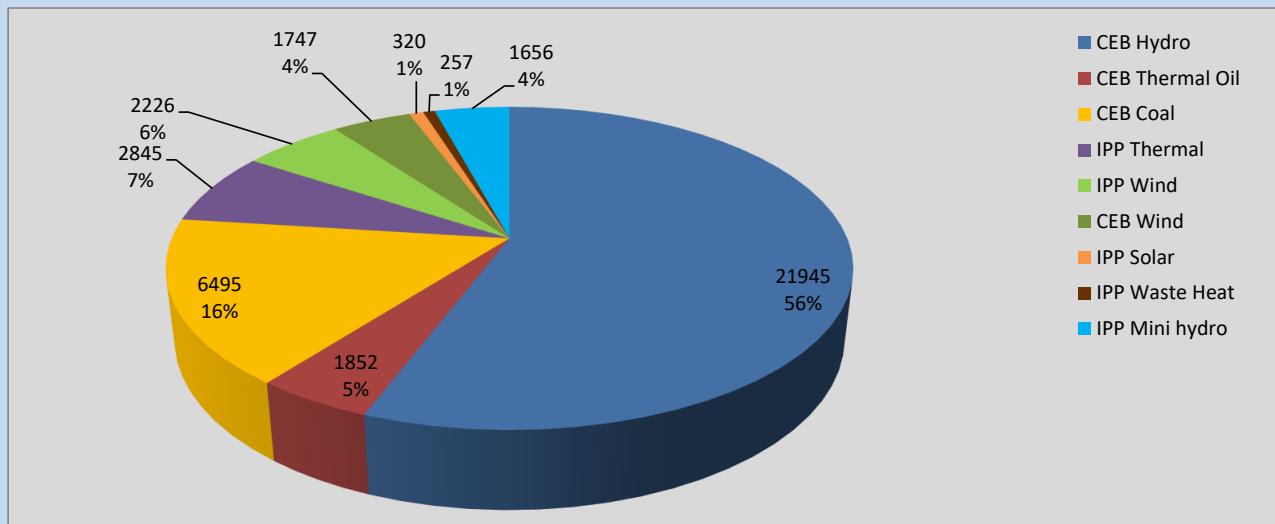
Generation and Reservoirs Statistics

August 23, 2022



PUBLIC UTILITIES COMMISSION OF SRI LANKA

Daily Generation Mix in MWh



Total Generation **39,343 MWh**

Note: Above data is excluding contribution from Roof Top Solar, 1MW Solar and certain Mini Hydro plants

Cumulative Dispatch

Note: Following data is Excluding contribution from Roof Top Solar, 1MW solar and Mini Hydro plants

For Current Month

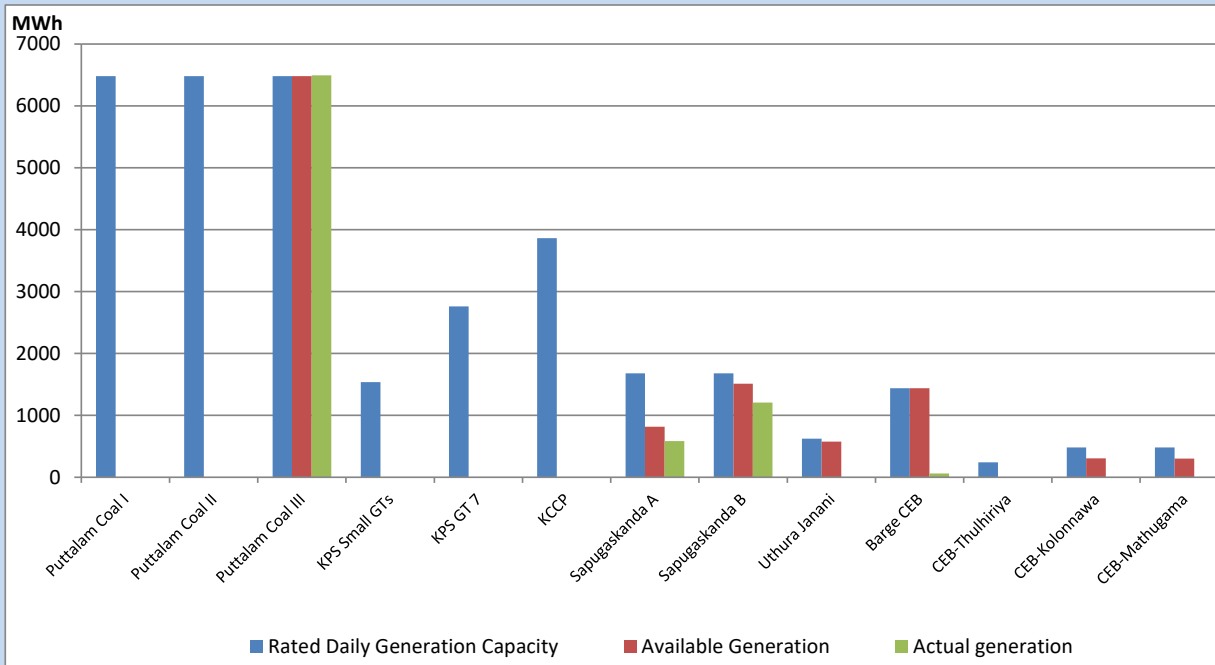
Category	Dispatch (GWh)	Percentage
CEB Hydro	468.36	52.48%
CEB Thermal Oil	41.20	4.62%
CEB Coal	213.96	23.97%
IPP Thermal	41.91	4.70%
SPP Wind	41.01	4.59%
CEB Wind	38.83	4.35%
SPP Solar	6.46	0.72%
SPP Solid Waste	3.68	0.41%
Mini Hydro	37.11	4.16%
Total	892.52	

For Current Year

Category	Dispatch (GWh)	Percentage
CEB Hydro	2,966.5	30.96%
CEB Thermal Oil	1,096.6	11.44%
CEB Coal	3,633.6	37.92%
IPP Thermal	1,014.4	10.59%
SPP Wind	225.0	2.35%
CEB Wind	240.1	2.51%
SPP Solar	60.4	0.63%
SPP Solid Waste	47.7	0.50%
Mini Hydro	298.1	3.11%
Total	9,582.1	

CEB owned Thermal Plant Dispatch

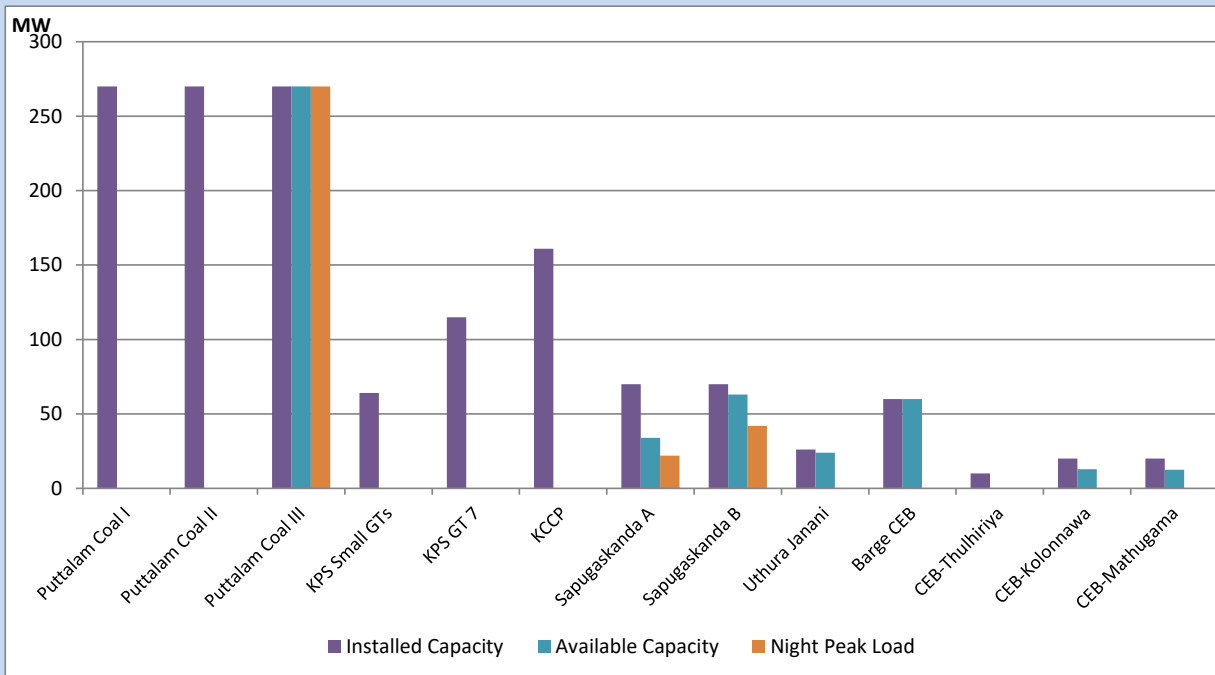
August 23, 2022



Available Generation is estimated based on plant availability at 6.00am on

August 24, 2022

CEB owned Thermal Plant Loading at the Night Peak



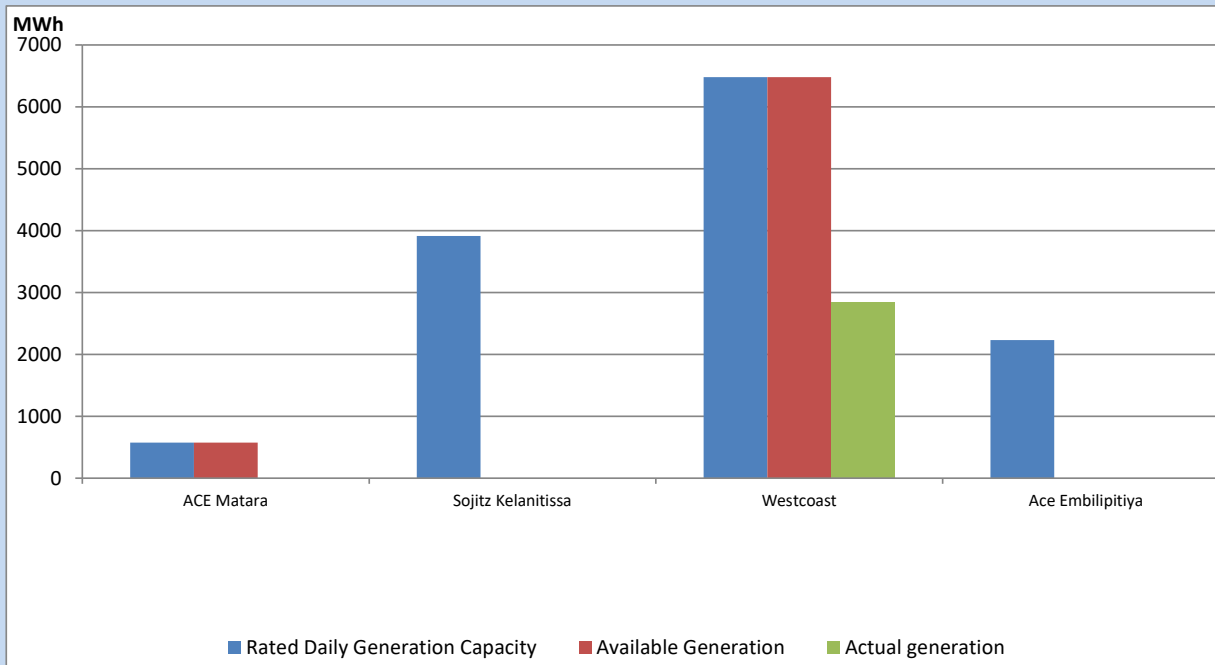
Note- Plant availability is recorded at 6.00 am on

August 24, 2022

IPP owned Thermal Plant Dispatch

August 23, 2022

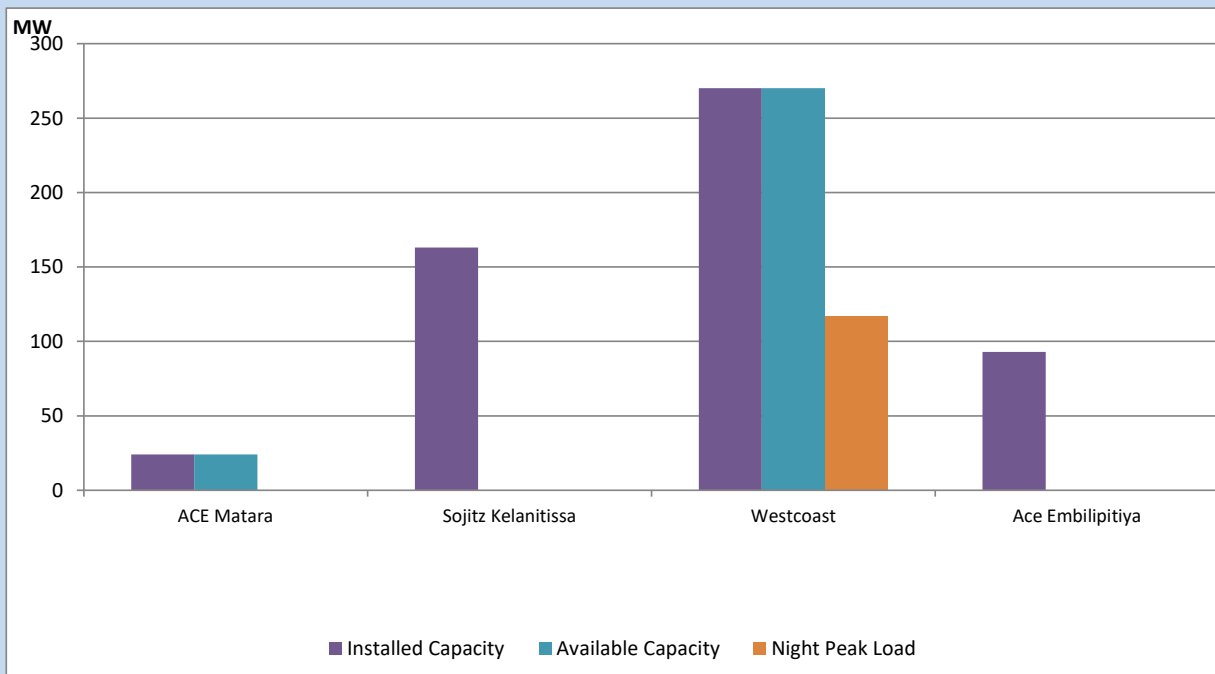
Asia Power, V Power Pallekale, Vpower Galle, V Power Horana, Vpower Hambantota, Vpower Valachchena and Altaqa Mahiyanganaya are not available due to expiration of PPAs



Available Generation is estimated based on plant availability at 6.00am on

August 24, 2022

IPP owned Thermal Plant Loading at the Night Peak

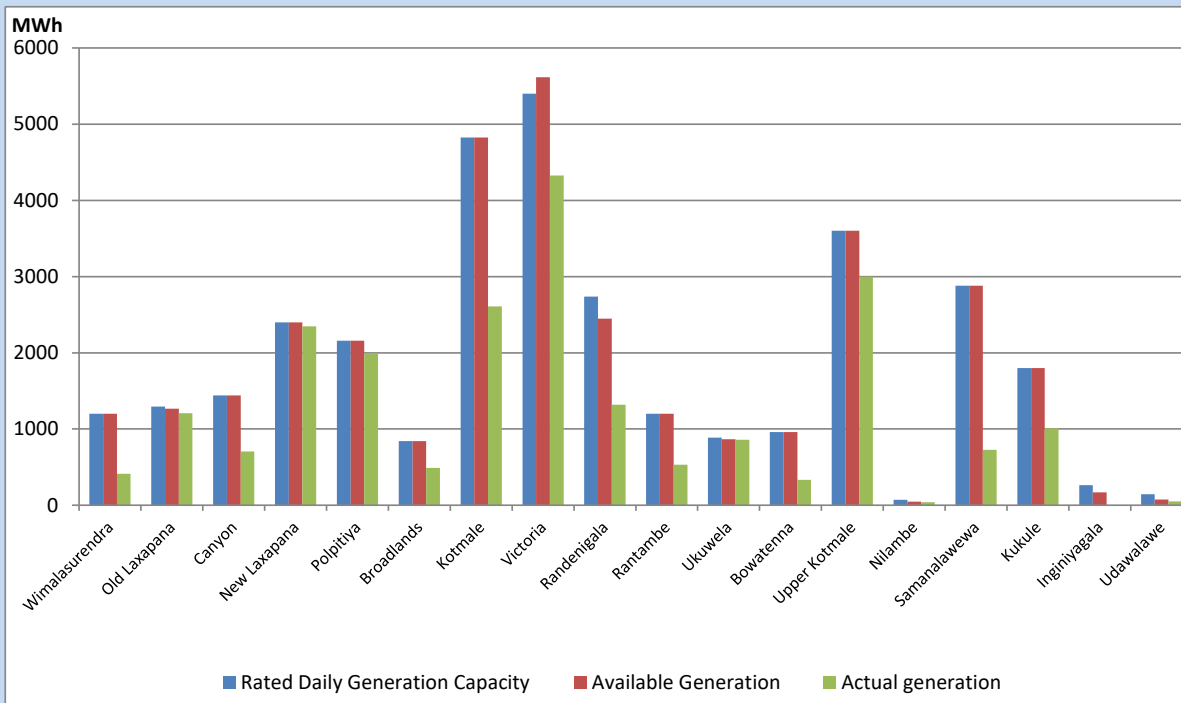


Note- Plant availability is recorded at 6.00 am on

August 24, 2022

Major Hydro Plant Dispatch

August 23, 2022

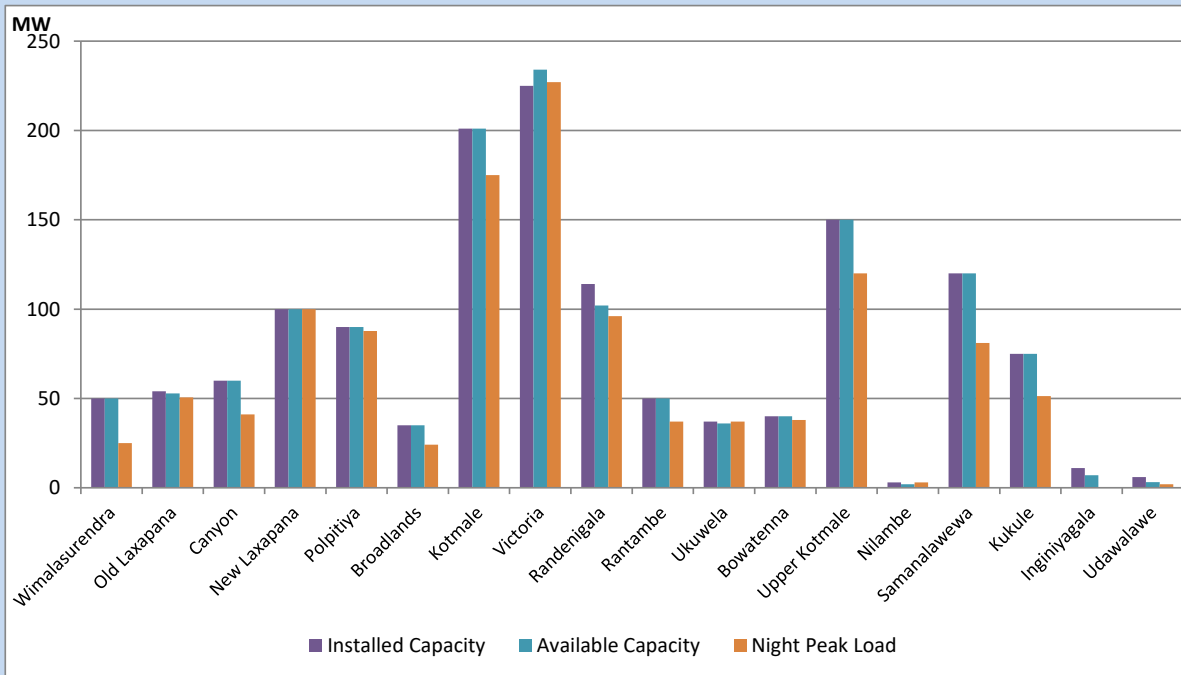


Available Generation is estimated based on plant availability at 6.00am on August 24, 2022
 Broadlands power plant is operating in the Commissioning Stage

August 24, 2022

Major Hydro Plant Loading at Night Peak

August 23, 2022



Note- Plant availability is recorded at 6.00 am on August 24, 2022
 Broadlands power plant is operating in the Commissioning Stage

Summary of Major Plant performance

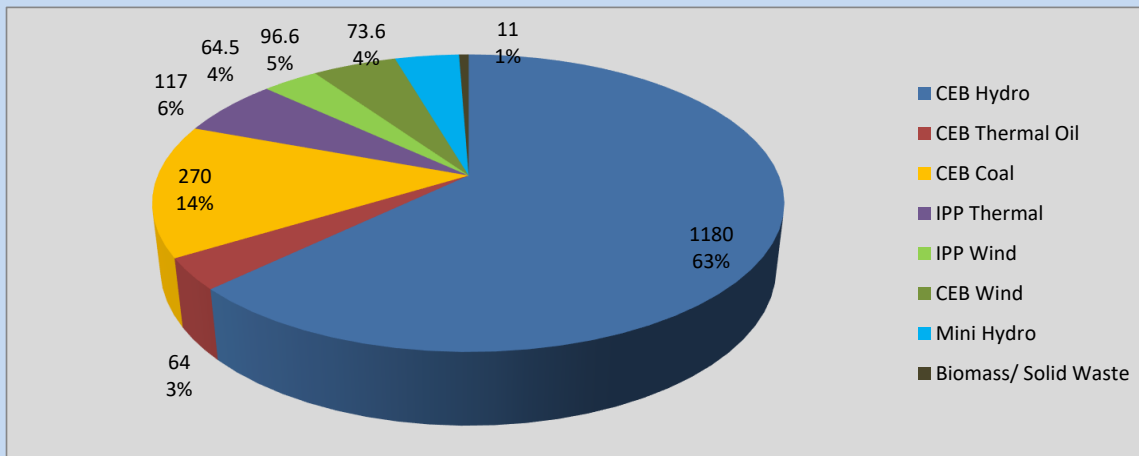
Plant	Installed Capacity	Plant Availability	Night peak Load	Plant Dispatch
	(MW)	(MW)	(MW)	(MWh)
Wimalasurendra	50	50	25	412
Old Laxapana	54	53	51	1,206
Canyon	60	60	41	705
New Laxapana	100	100	100	2,348
Polpitiya	90	90	88	1,993
Broadlands	35	35	24	489
Kotmale	201	201	175	2,610
Victoria	225	234	227	4,328
Randenigala	114	102	96	1,318
Rantambe	50	50	37	530
Ukuwela	37	36	37	857
Bowatenna	40	40	38	331
Upper Kotmale	150	150	120	2,998
Nilambe	3	2	3	38
Samanalawewa	120	120	81	726
Kukule	75	75	51	1,007
Inginiyagala	11	7	0	0
Udawalawe	6	3	2	49
Puttalam Coal I	270	0	0	0
Puttalam Coal II	270	0	0	0
Puttalam Coal III	270	270	270	6,495
KPS Small GTs	64	0	0	0
KPS GT 7	115	0	0	0
KCCP	161	0	0	0
Sapugaskanda A	70	34	22	583
Sapugaskanda B	70	63	42	1,206
Uthura Janani	26	24	0	1
Barge CEB	60	60	0	62
CEB-Thulhiriya	10	0	0	0
CEB-Kolonnawa	20	13	0	0
CEB-Mathugama	20	13	0	0
ACE Matara	24	24	0	0
Sojitz Kelanitissa	163	0	0	0
West Coast	270	270	117	2,845
ACE Embilipitiya	93	0	0	0
Total	3,397	2,178	1,893	39,343

Plant availability is the availability recorded at 6 am on

August 24, 2022

Contribution to the Night Peak in MW

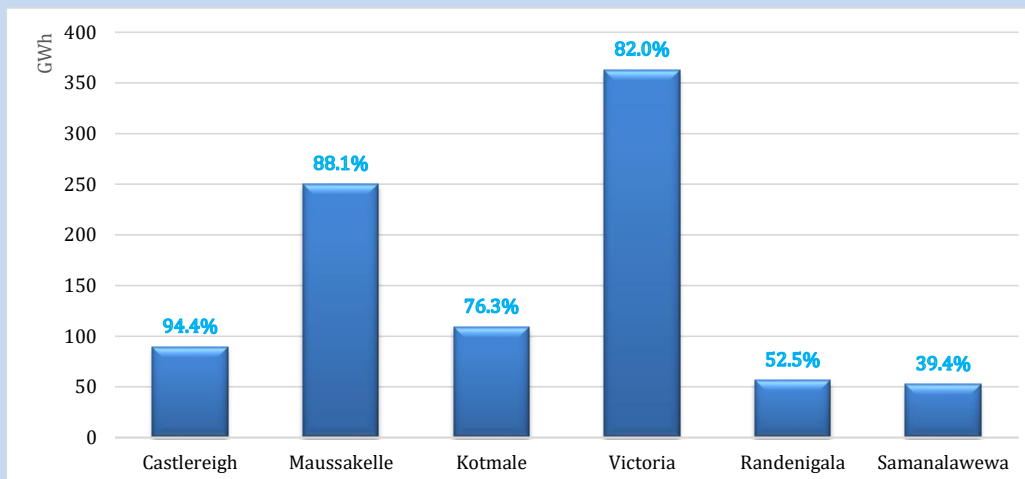
August 23, 2022



Night Peak*	1,876.5 MW
Day Peak	1,869.7 MW
Minimum Demand	1,239.5 MW

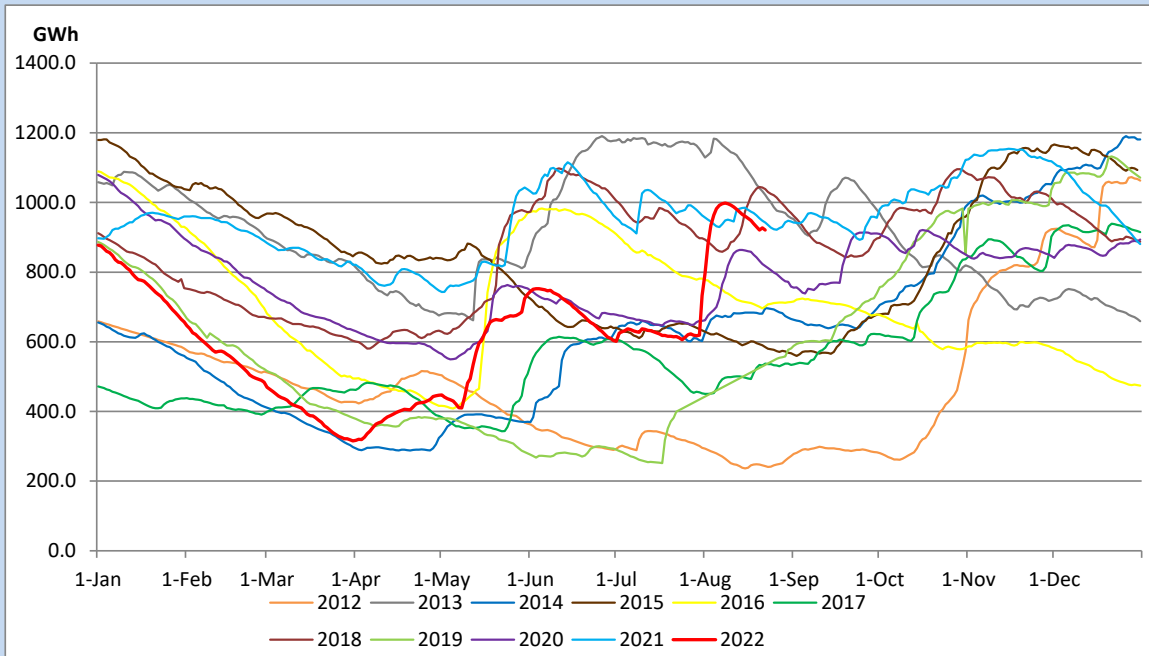
Above figures are excluding contribution from Roof Top Solar, 1MW solar, certain Wind plants and Mini Hydro plants

Reservoir Levels - as at 06.00 Hr on August 24, 2022

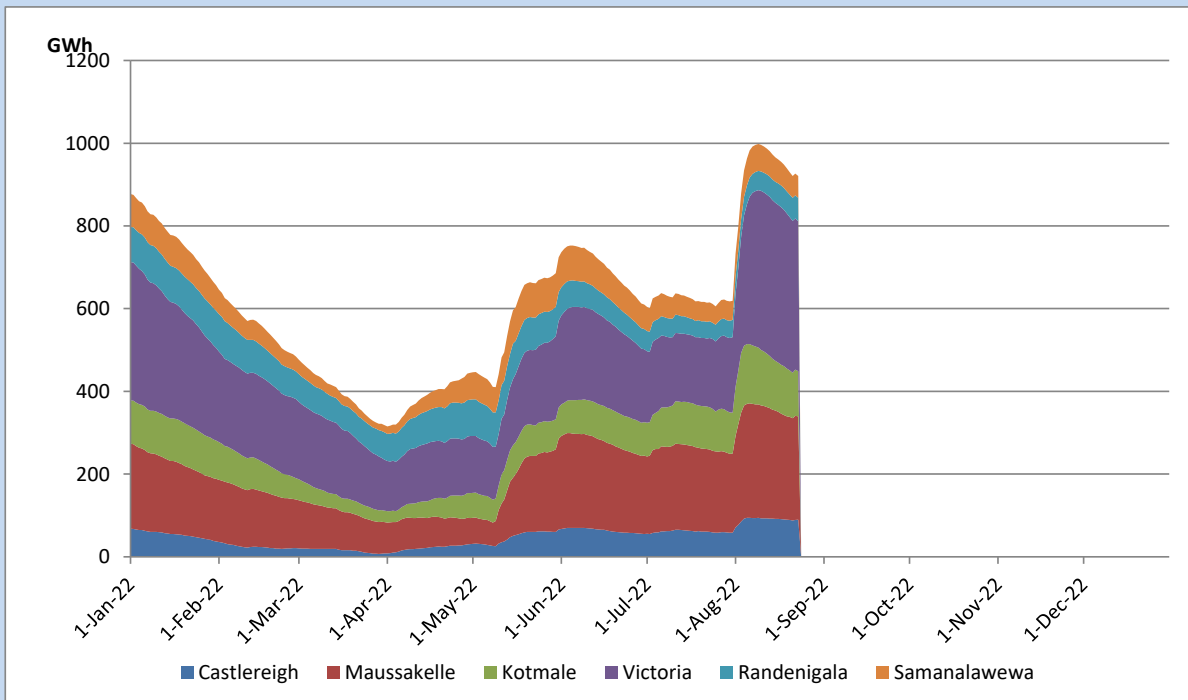


Total Reservoir Level	920.8 GWh
% of Total capacity	76.4%

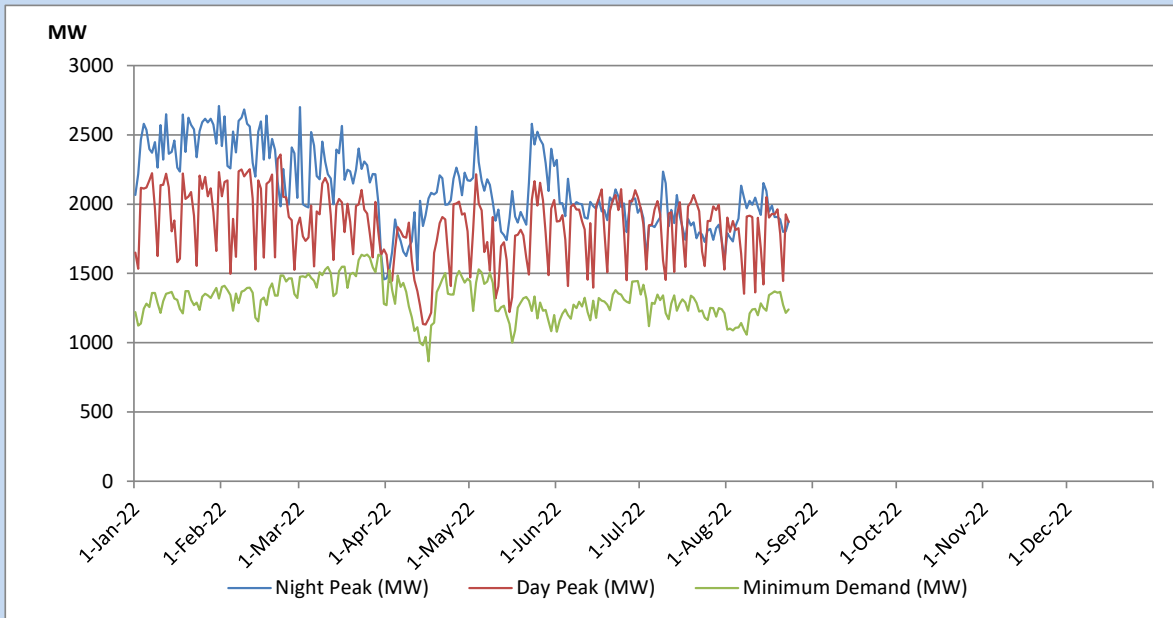
Comparison of Total Reservoir Storage Levels with Past Years



Variation of Major Hydro Reservoir Levels in the current year (GWh)



Variation of Demand during the current year

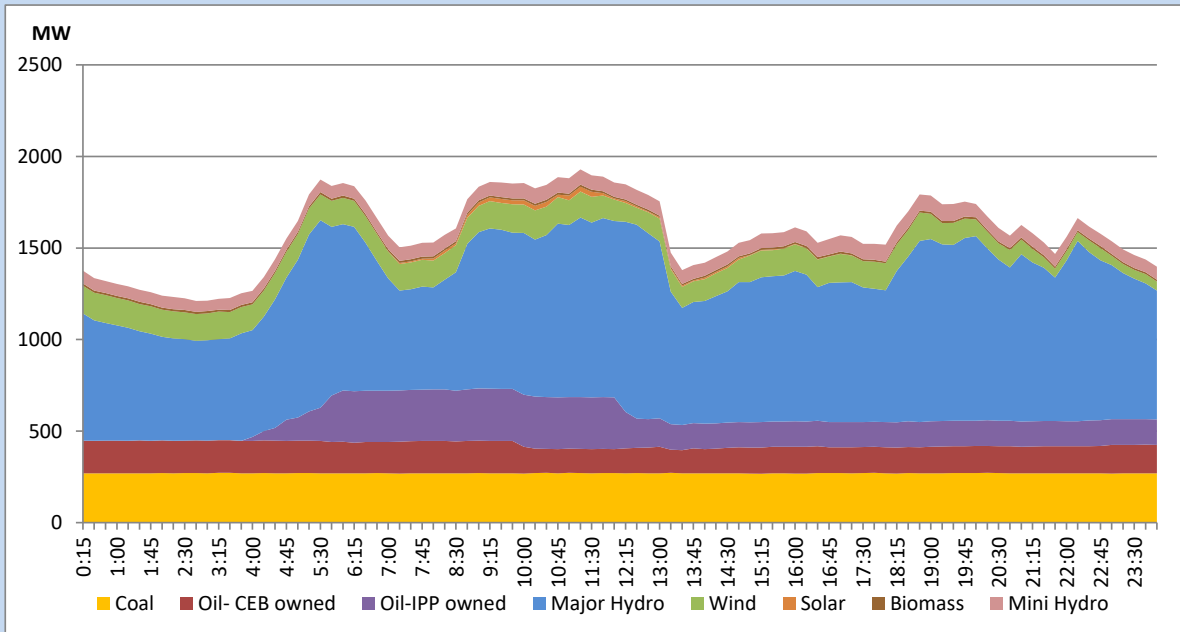


The above figures are excluding contribution from Roof Top Solar, 1MW solar, certain Wind plants and Mini Hydro plants

Daily Load Curve of the Previous day

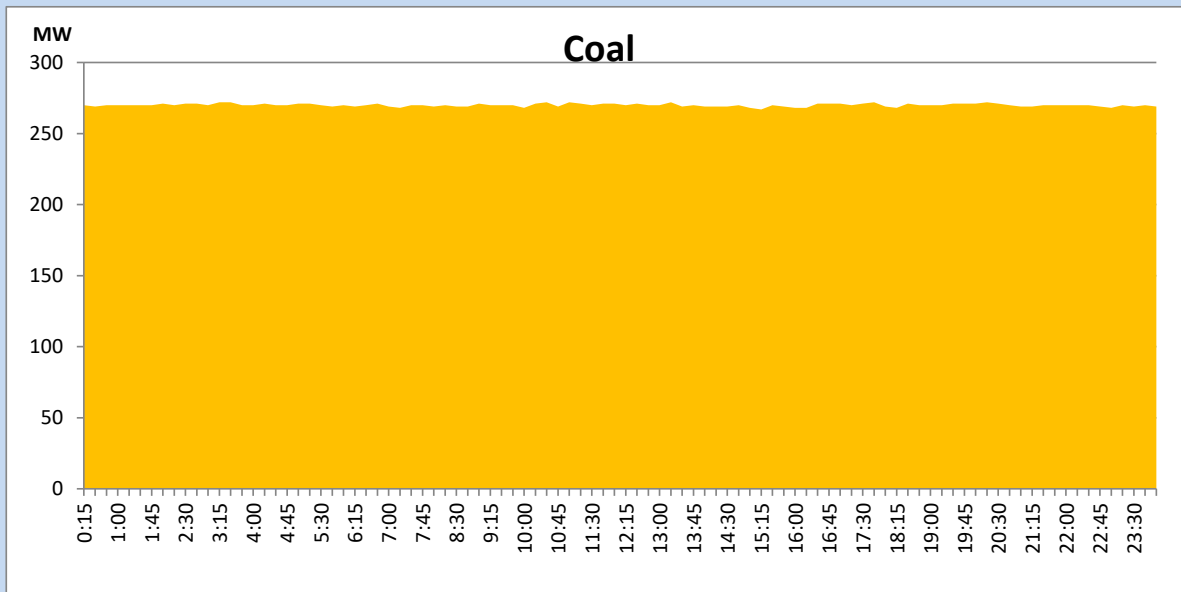
August 22, 2022

Solar and wind data is based on Telemetered Power Stations only



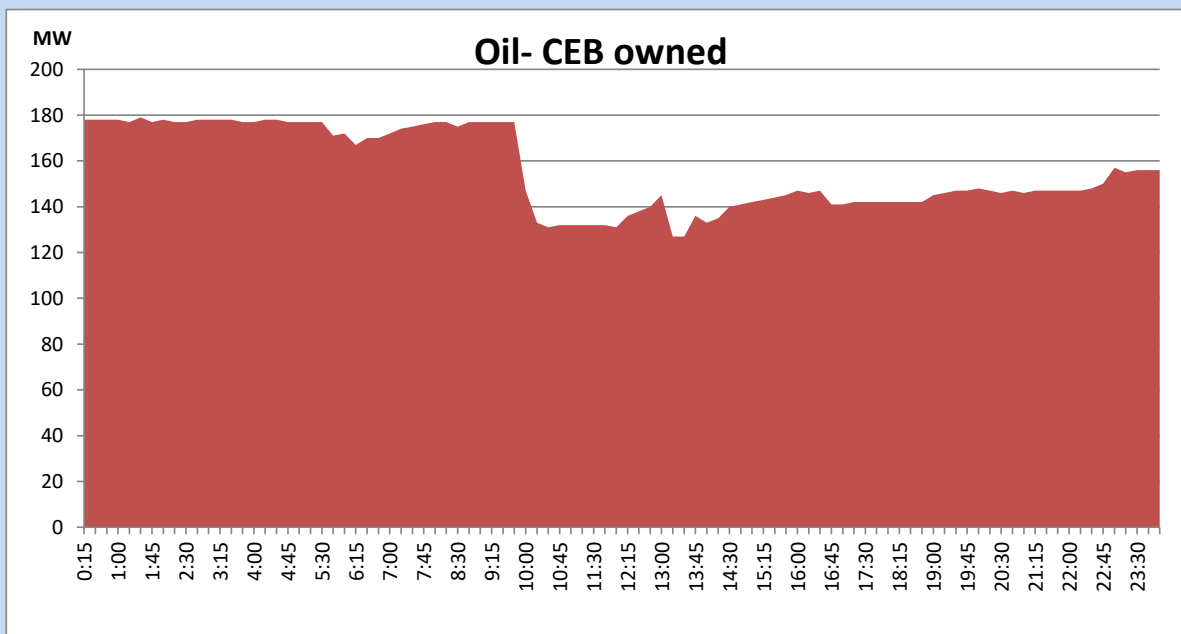
Coal Generation during the Previous day

August 22, 2022



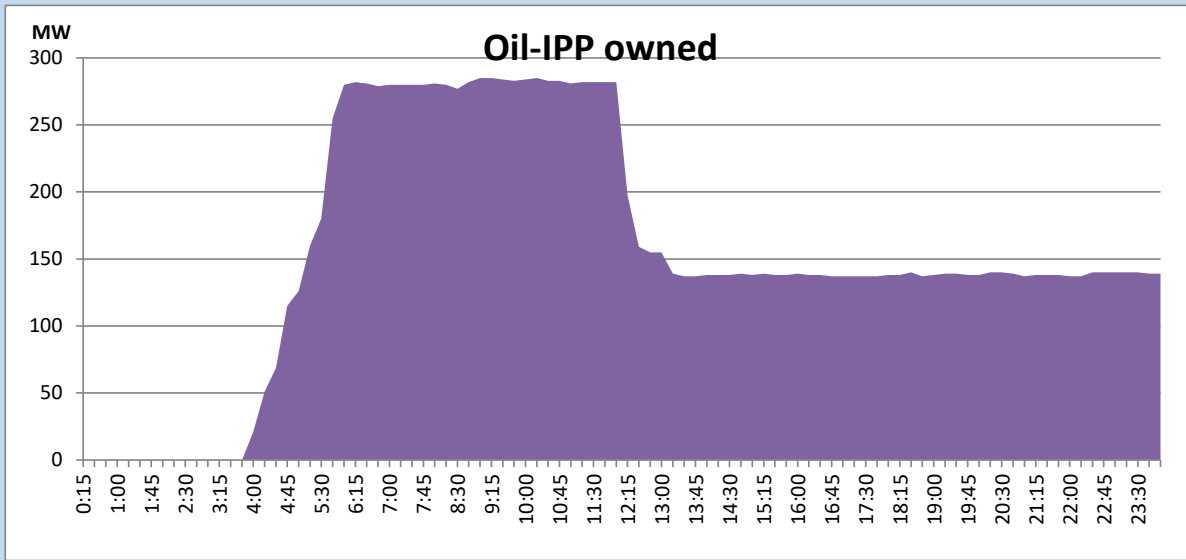
CEB Oil Plant Generation during the Previous day

August 22, 2022



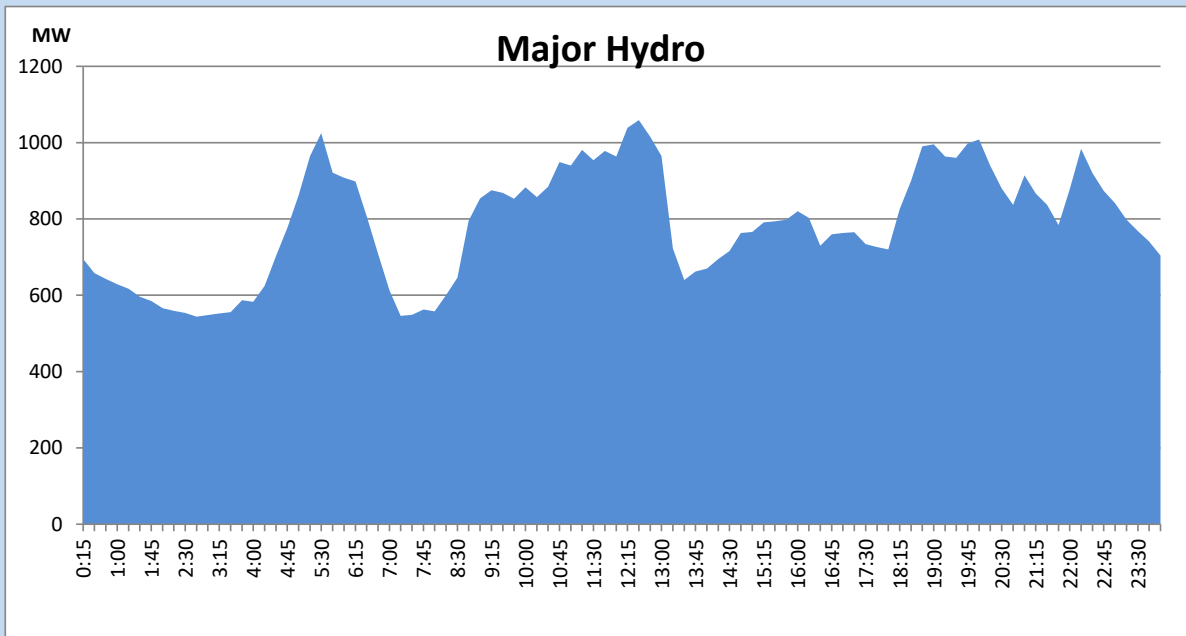
IPP Oil Plant Generation during the Previous day

August 22, 2022



Major Hydro Generation during the Previous day

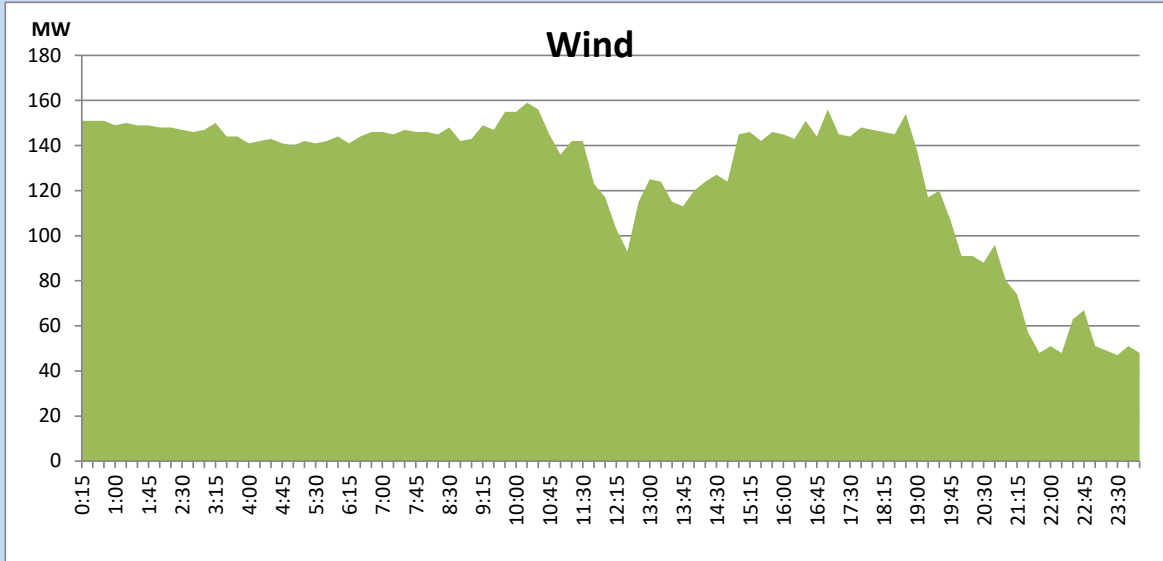
August 22, 2022



Wind Generation during the Previous day

August 22, 2022

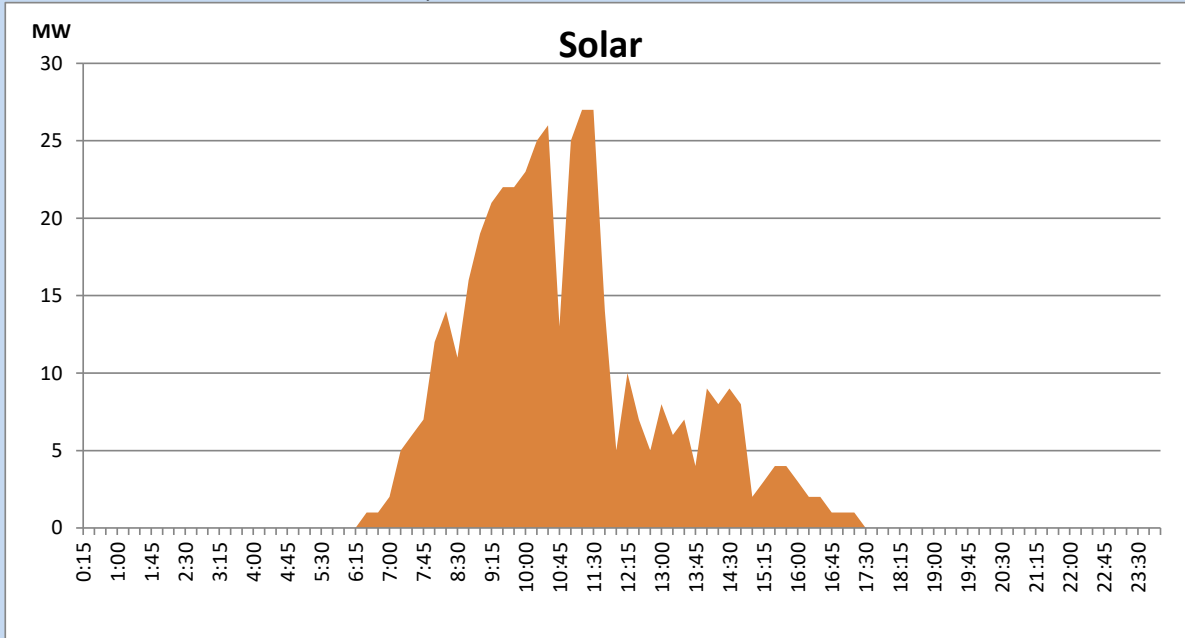
Based on Telemetered Power Stations only



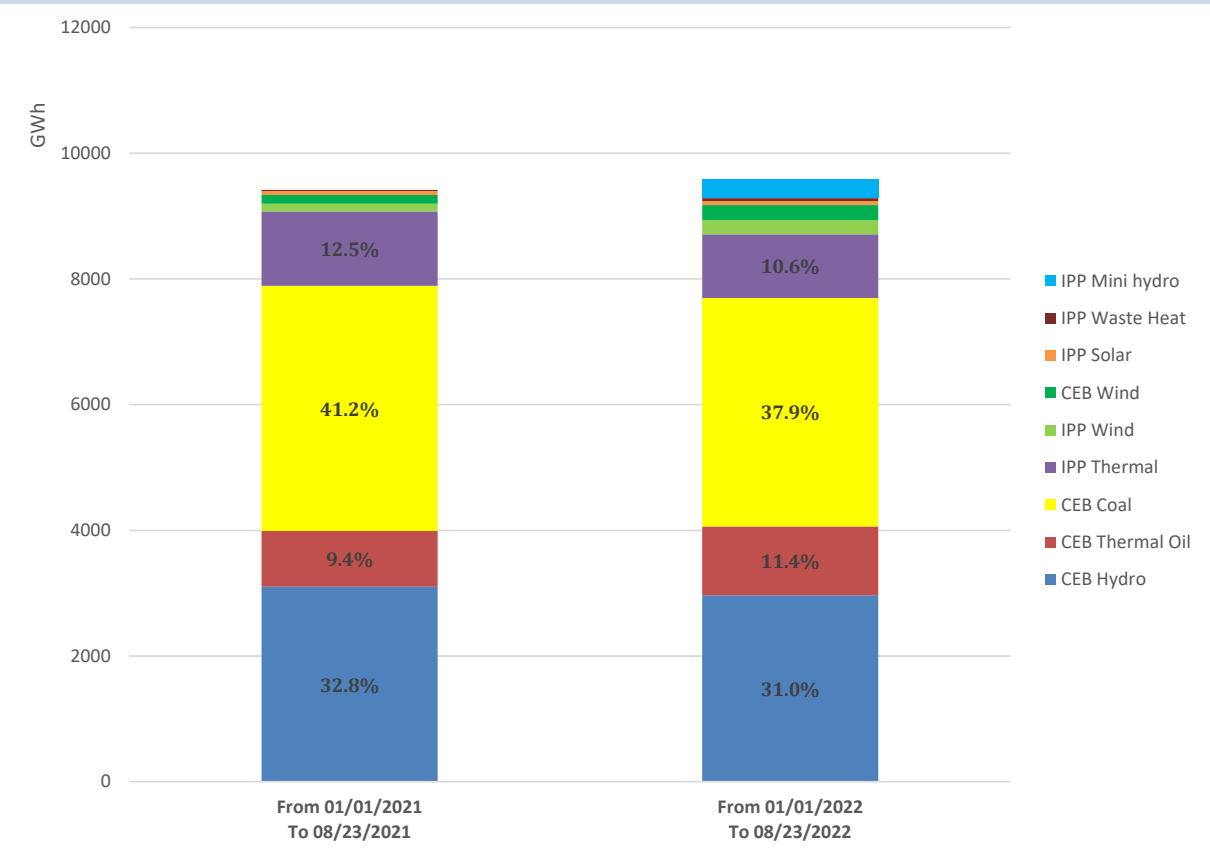
Solar Generation during the Previous day

August 22, 2022

Based on Telemetered Power Stations only



Cumulative Dispatch Comparison with Last Year



Thermal Plant Fuel types

Power Station	Primary Fuel
CEB Thermal	
Sapugaskanda 1	Heavy Fuel
Sapugaskanda 2	Heavy Fuel
Kelanitissa Small Gas Turbines	Auto Diesel
GT 7 - Kelanitissa	Auto Diesel
Kelanitissa CCY	Naphtha or Diesel
Lakvijaya 1	Coal
Lakvijaya 2	Coal
Lakvijaya 3	Coal
Uthuru Janani	Heavy Fuel
Barge CEB	Heavy Fuel

Power Station	Primary Fuel
Private Thermal	
Sojitz - Kelanitissa	Auto Diesel
West Coast	Auto Diesel / Heavy Fuel
ACE Matara	Heavy Fuel
ACE Embilipitiya	Heavy Fuel

Major Incidents during the day -as reported by CEB morning of

August 24, 2022

- 1) Rotational manual load shedding was carried out from 05:30 hrs to 08:30 hrs and 13:00 hrs to 22:00 hrs.