

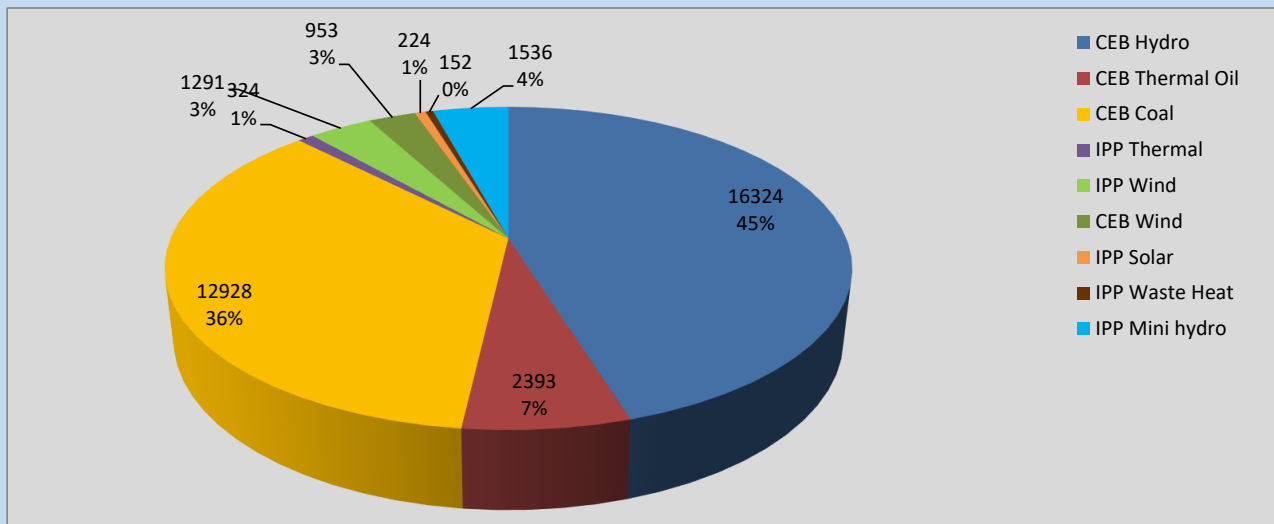
Generation and Reservoirs Statistics

July 23, 2022



PUBLIC UTILITIES COMMISSION OF SRI LANKA

Daily Generation Mix in MWh



Total Generation **36,125 MWh**

Note: Above data is excluding contribution from Roof Top Solar, 1MW Solar and certain Mini Hydro plants

Cumulative Dispatch

Note: Following data is Excluding contribution from Roof Top Solar, 1MW solar and Mini Hydro plants

For Current Month

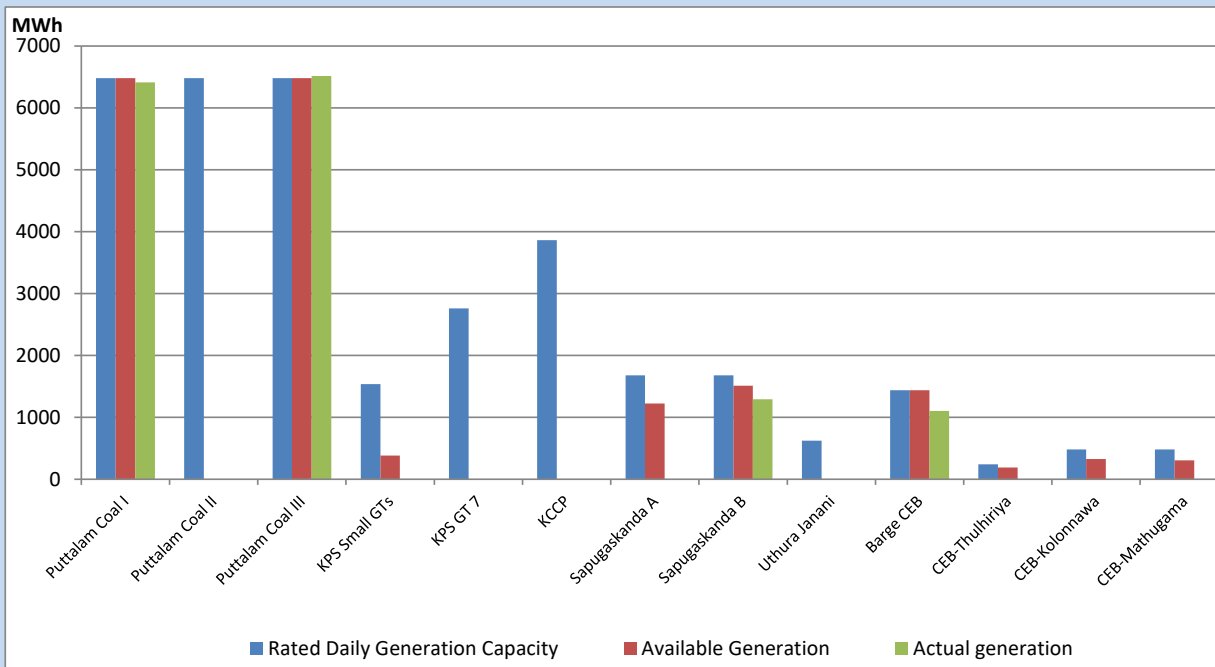
Category	Dispatch (GWh)	Percentage
CEB Hydro	323.47	36.43%
CEB Thermal Oil	88.19	9.93%
CEB Coal	288.94	32.54%
IPP Thermal	78.40	8.83%
SPP Wind	31.01	3.49%
CEB Wind	31.83	3.58%
SPP Solar	6.09	0.69%
SPP Solid Waste	4.89	0.55%
Mini Hydro	35.21	3.96%
Total	888.03	

For Current Year

Category	Dispatch (GWh)	Percentage
CEB Hydro	2,374.8	28.29%
CEB Thermal Oil	1,028.3	12.25%
CEB Coal	3,317.2	39.51%
IPP Thermal	950.0	11.32%
SPP Wind	180.9	2.15%
CEB Wind	197.7	2.36%
SPP Solar	52.5	0.63%
SPP Solid Waste	43.4	0.52%
Mini Hydro	250.8	2.99%
Total	8,395.4	

CEB owned Thermal Plant Dispatch

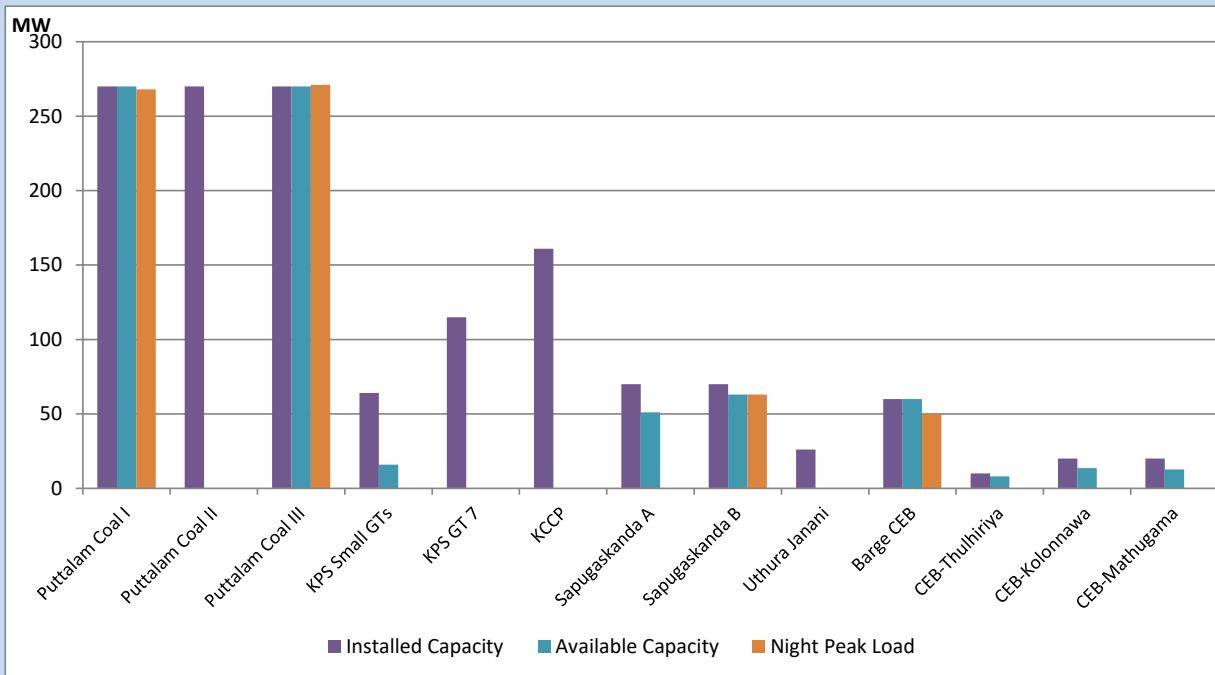
July 23, 2022



Available Generation is estimated based on plant availability at 6.00am on

July 24, 2022

CEB owned Thermal Plant Loading at the Night Peak



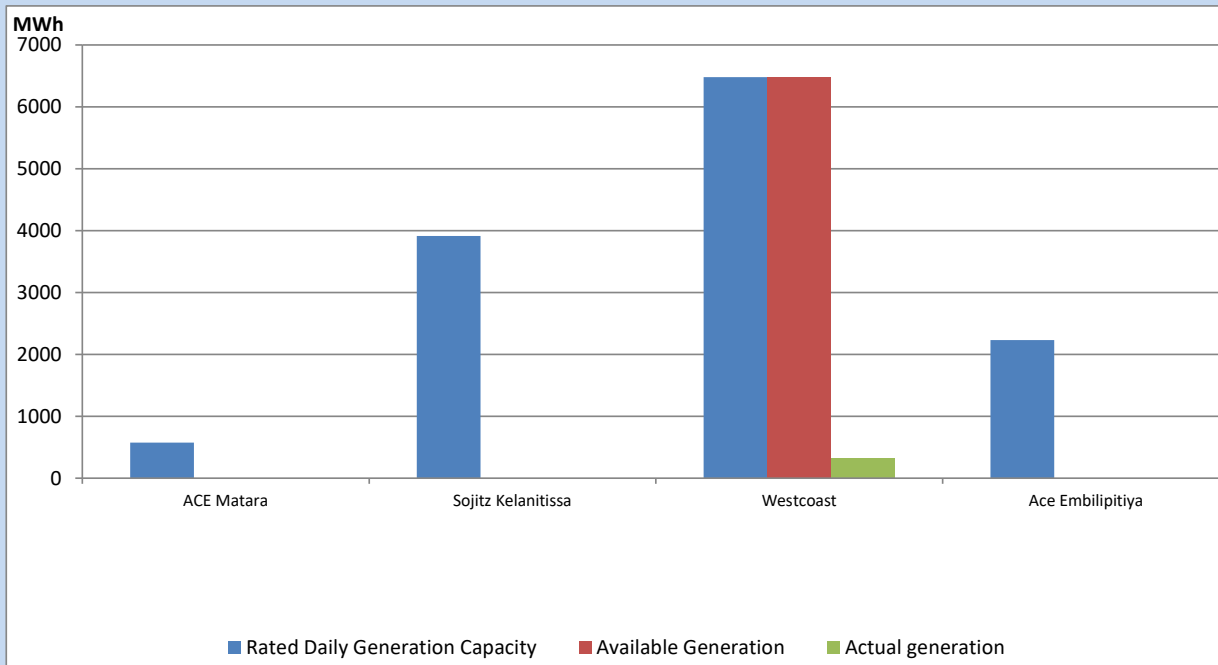
Note- Plant availability is recorded at 6.00 am on

July 24, 2022

IPP owned Thermal Plant Dispatch

July 23, 2022

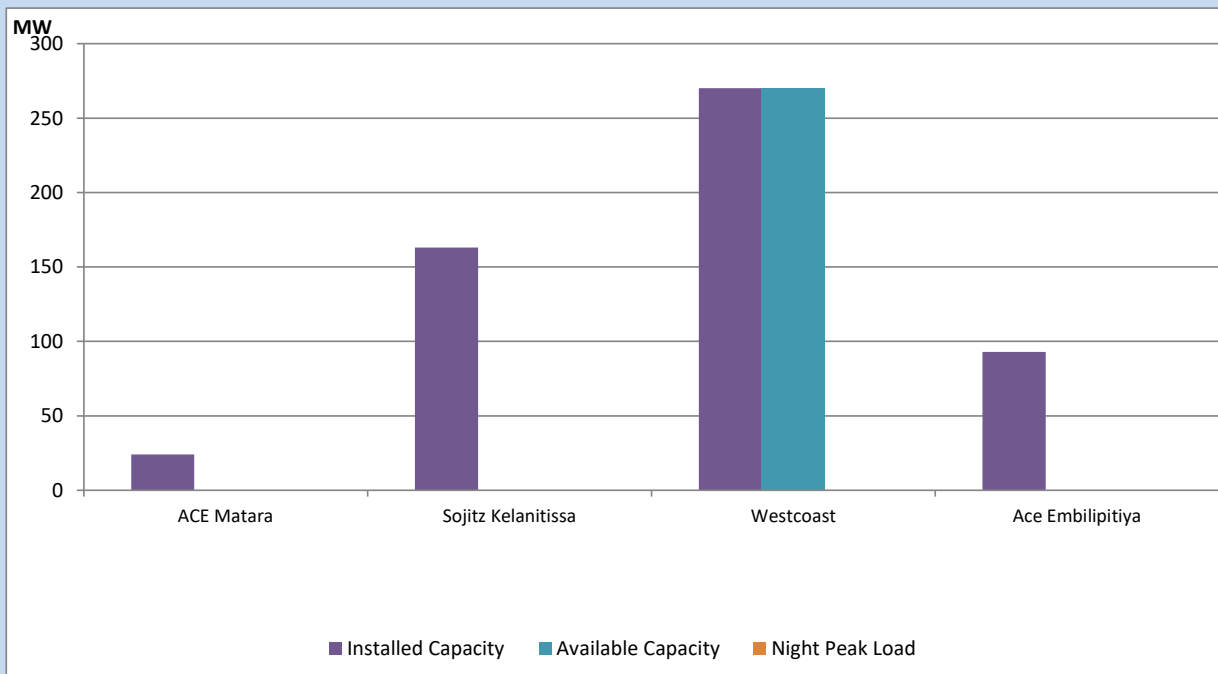
Asia Power, V Power Pallekale, Vpower Galle, V Power Horana, Vpower Hambantota, Vpower Valachchena and Altaqa Mahiyanganaya are not available due to expiration of PPAs



Available Generation is estimated based on plant availability at 6.00am on

July 24, 2022

IPP owned Thermal Plant Loading at the Night Peak

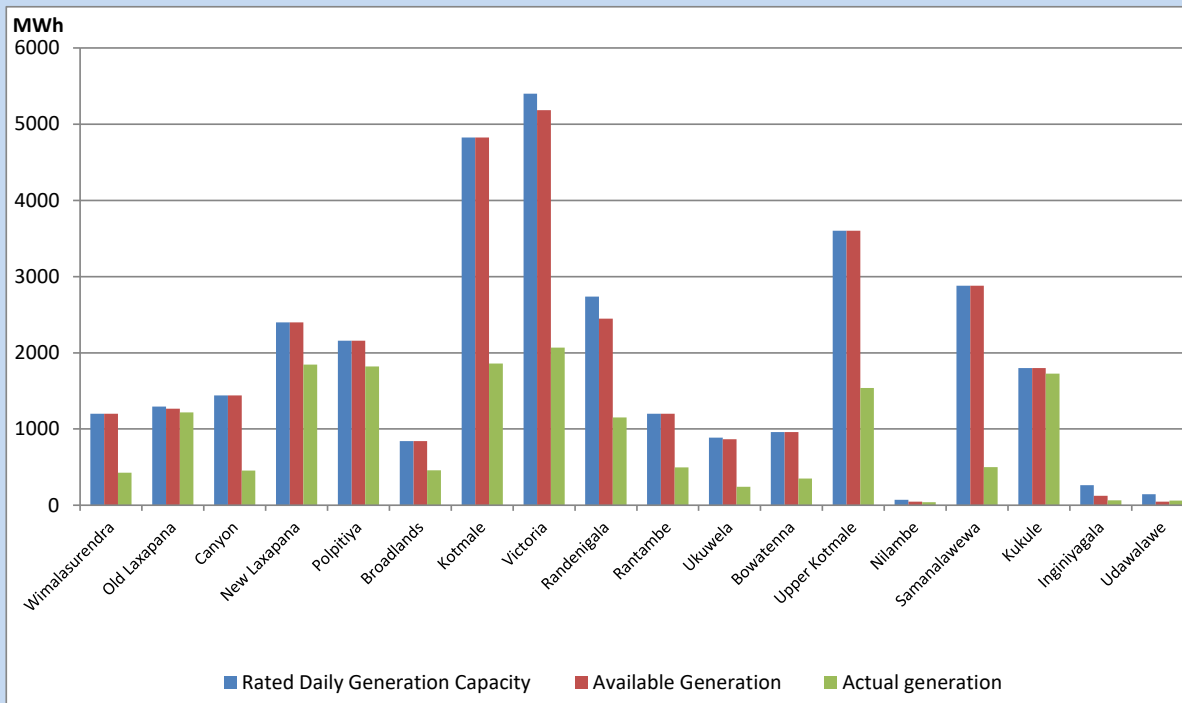


Note- Plant availability is recorded at 6.00 am on

July 24, 2022

Major Hydro Plant Dispatch

July 23, 2022

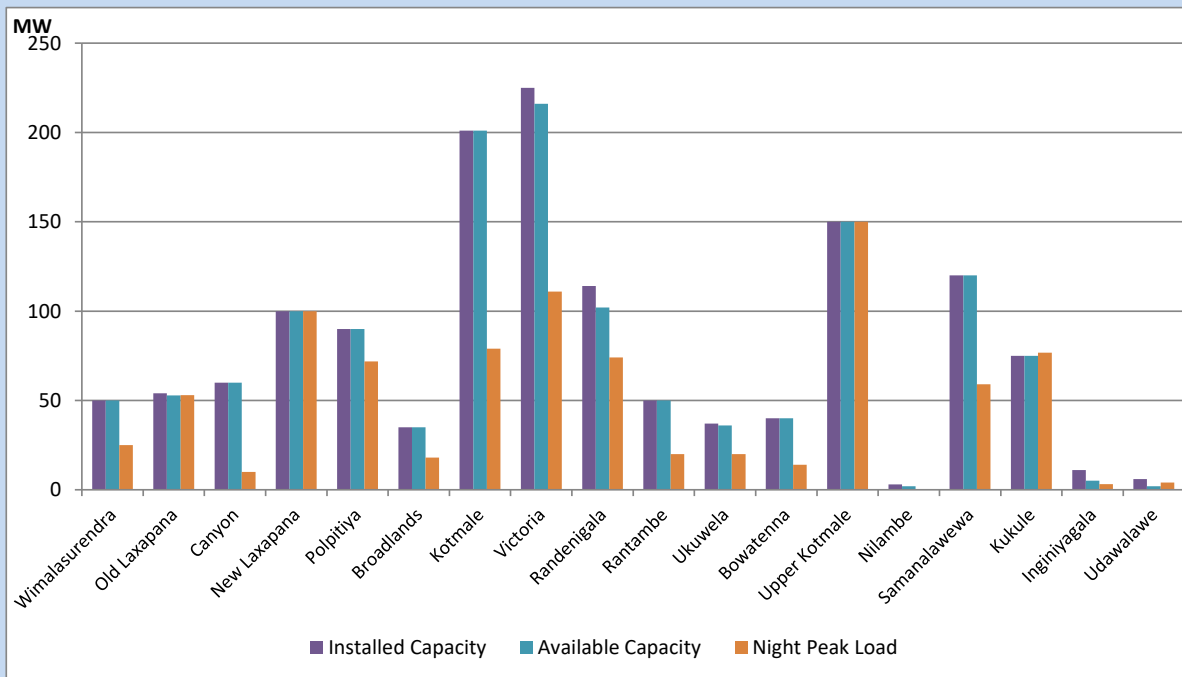


Available Generation is estimated based on plant availability at 6.00am on
Broadlands power plant is operating in the Commissioning Stage

July 24, 2022

Major Hydro Plant Loading at Night Peak

July 23, 2022



Note- Plant availability is recorded at 6.00 am on
Broadlands power plant is operating in the Commissioning Stage

July 24, 2022

Summary of Major Plant performance

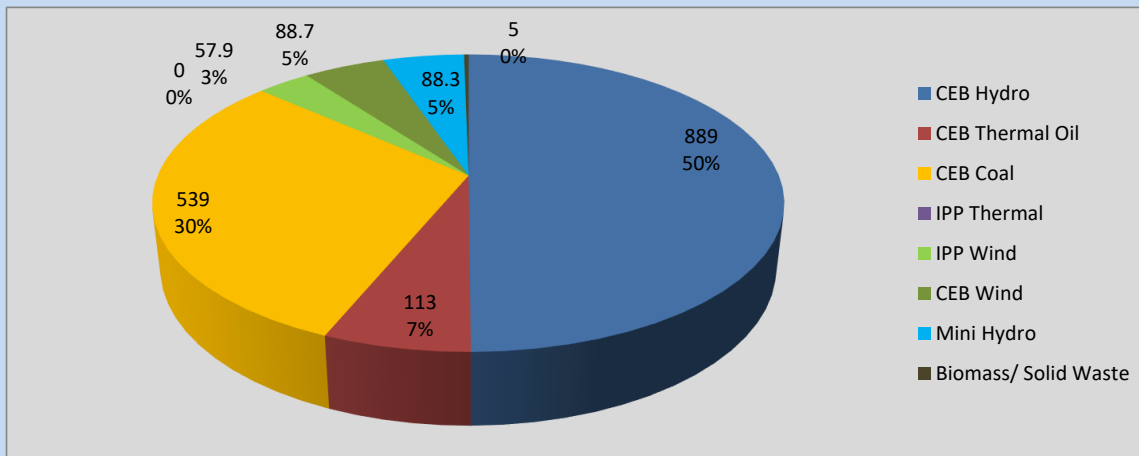
Plant	Installed Capacity	Plant Availability	Night peak Load	Plant Dispatch
	(MW)	(MW)	(MW)	(MWh)
Wimalasurendra	50	50	25	428
Old Laxapana	54	53	53	1,219
Canyon	60	60	10	454
New Laxapana	100	100	100	1,844
Polpitiya	90	90	72	1,821
Broadlands	35	35	18	458
Kotmale	201	201	79	1,860
Victoria	225	216	111	2,067
Randenigala	114	102	74	1,153
Rantambe	50	50	20	498
Ukuwela	37	36	20	243
Bowatenna	40	40	14	351
Upper Kotmale	150	150	150	1,538
Nilambe	3	2	0	40
Samanalawewa	120	120	59	500
Kukule	75	75	77	1,725
Inginiyagala	11	5	3	65
Udawalawe	6	2	4	60
Puttalam Coal I	270	270	268	6,412
Puttalam Coal II	270	0	0	0
Puttalam Coal III	270	270	271	6,516
KPS Small GTs	64	16	0	0
KPS GT 7	115	0	0	0
KCCP	161	0	0	0
Sapugaskanda A	70	51	0	0
Sapugaskanda B	70	63	63	1,291
Uthura Janani	26	0	0	0
Barge CEB	60	60	50	1,102
CEB-Thulhiriya	10	8	0	0
CEB-Kolonnawa	20	14	0	0
CEB-Mathugama	20	13	0	0
ACE Matara	24	0	0	0
Sojitz Kelanitissa	163	0	0	0
West Coast	270	270	0	324
ACE Embilipitiya	93	0	0	0
Total	3,397	2,421	1,781	36,125

Plant availability is the availability recorded at 6 am on

July 24, 2022

Contribution to the Night Peak in MW

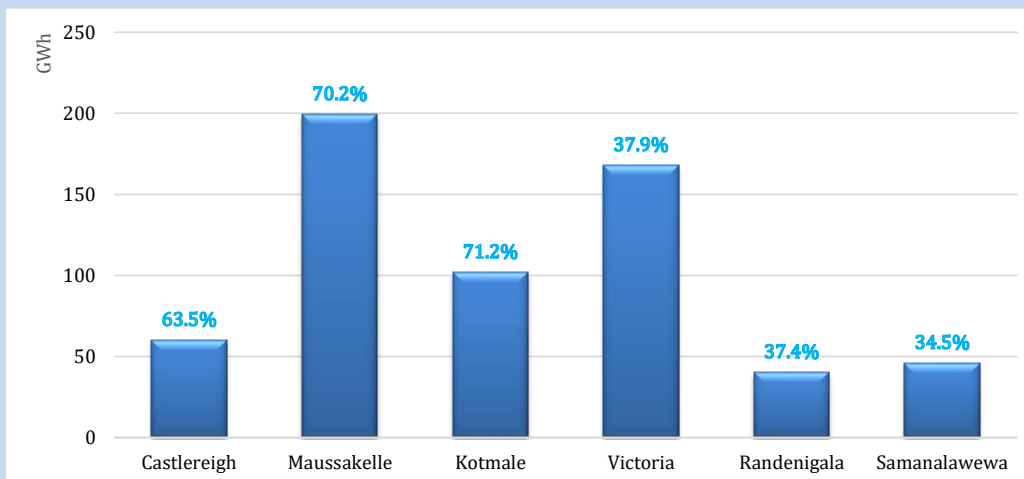
July 23, 2022



Night Peak*	1,780.5 MW
Day Peak	1,658.6 MW
Minimum Demand	1,231.7 MW

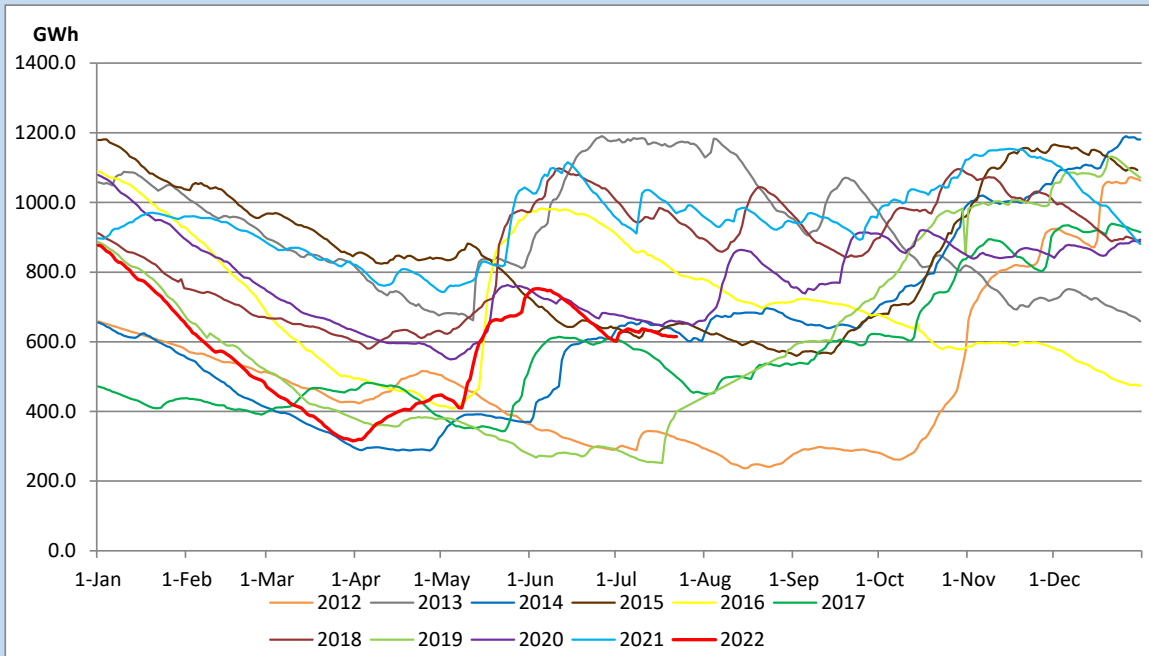
Above figures are excluding contribution from Roof Top Solar, 1MW solar, certain Wind plants and Mini Hydro plants

Reservoir Levels - as at 06.00 Hr on July 24, 2022

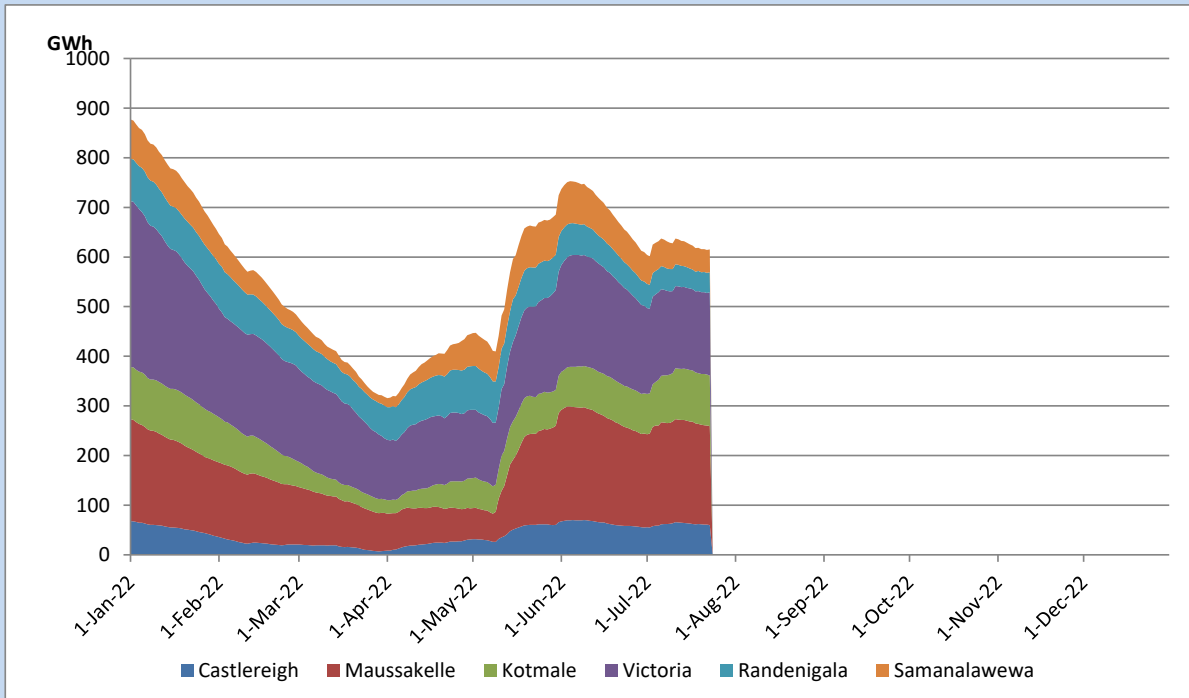


Total Reservoir Level	615.3 GWh
% of Total capacity	51.1%

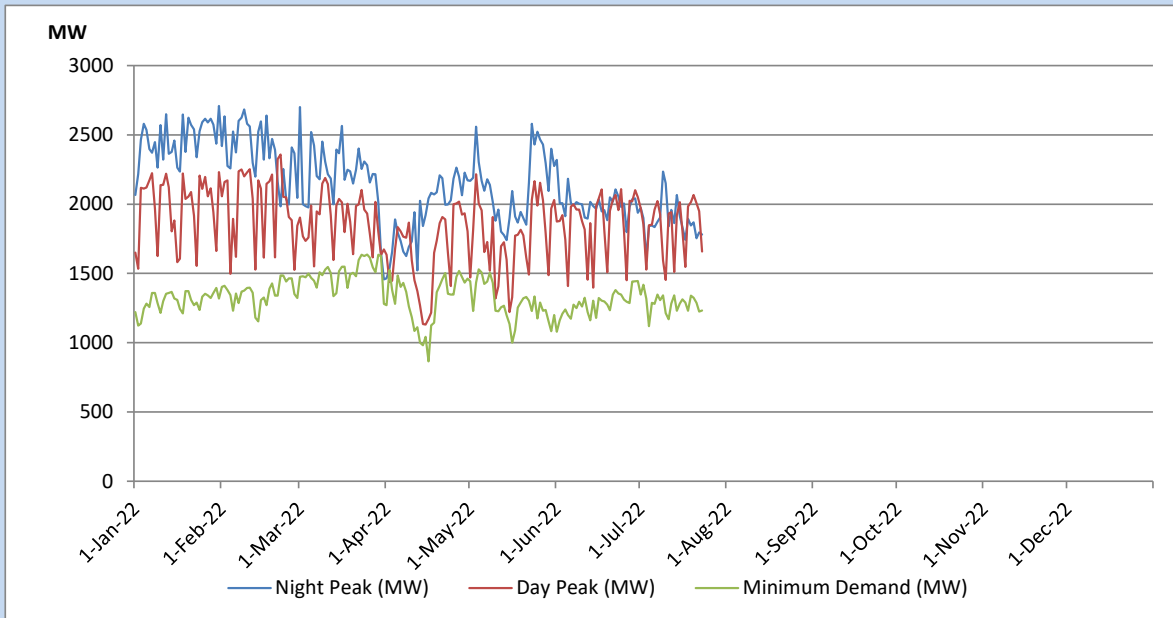
Comparison of Total Reservoir Storage Levels with Past Years



Variation of Major Hydro Reservoir Levels in the current year (GWh)



Variation of Demand during the current year

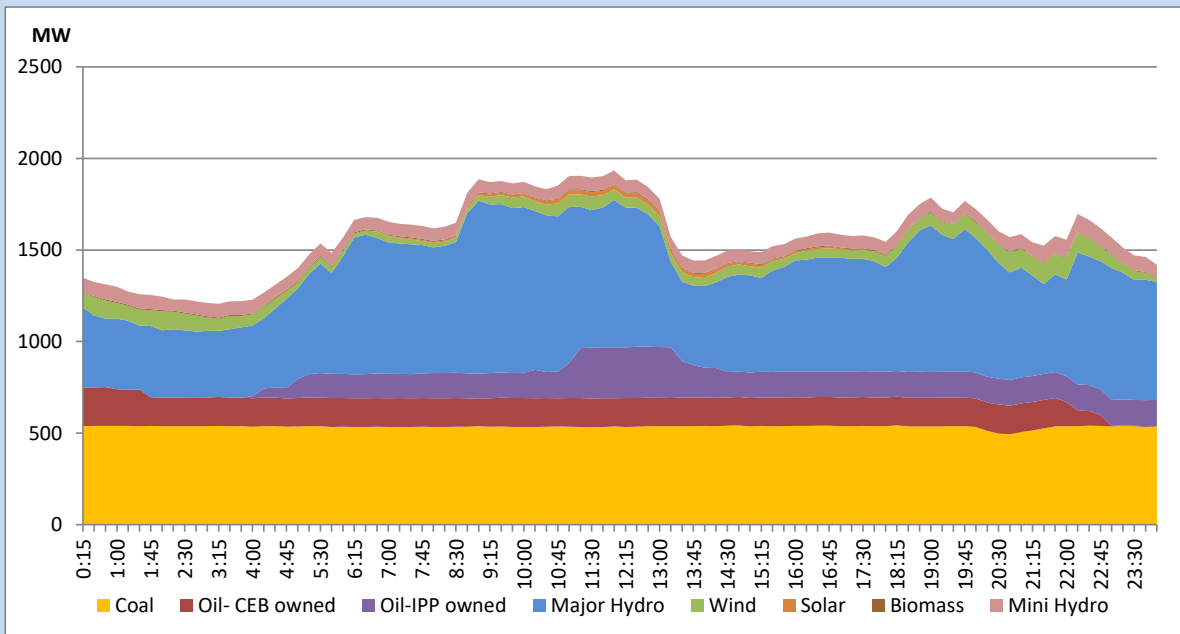


The above figures are excluding contribution from Roof Top Solar, 1MW solar, certain Wind plants and Mini Hydro plants

Daily Load Curve of the Previous day

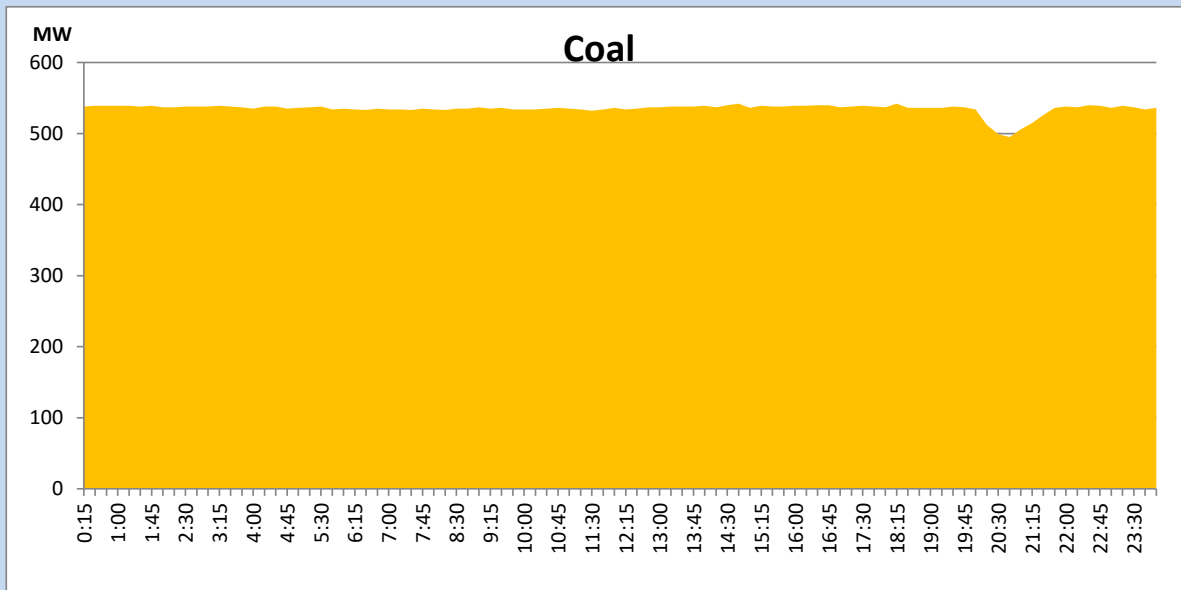
July 22, 2022

Solar and wind data is based on Telemetered Power Stations only



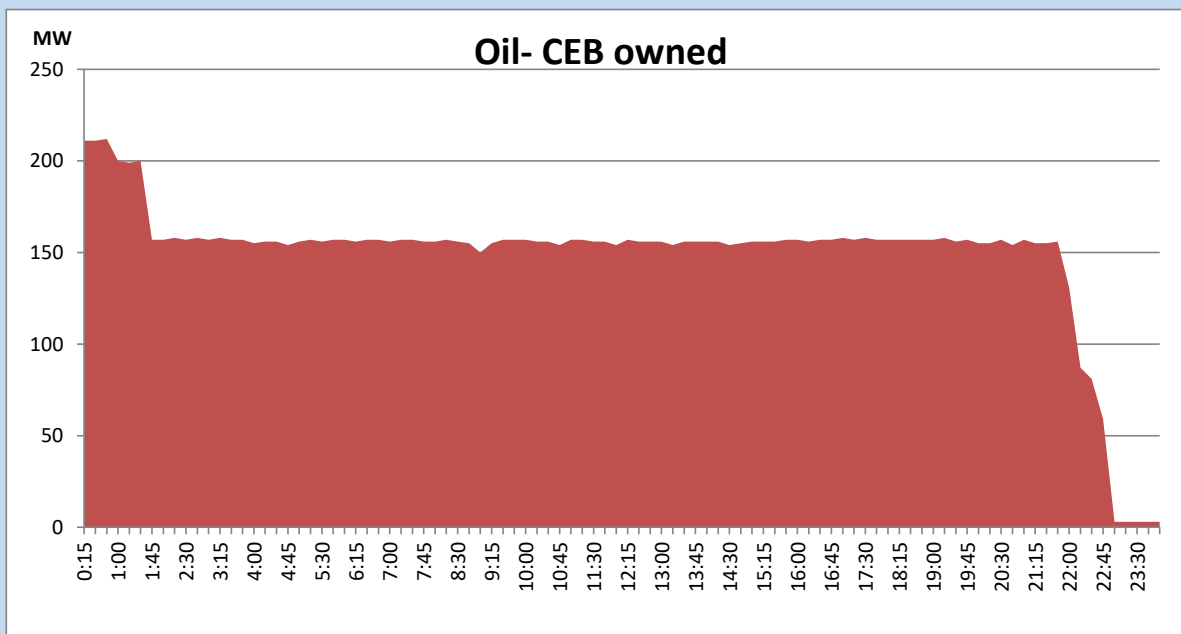
Coal Generation during the Previous day

July 22, 2022



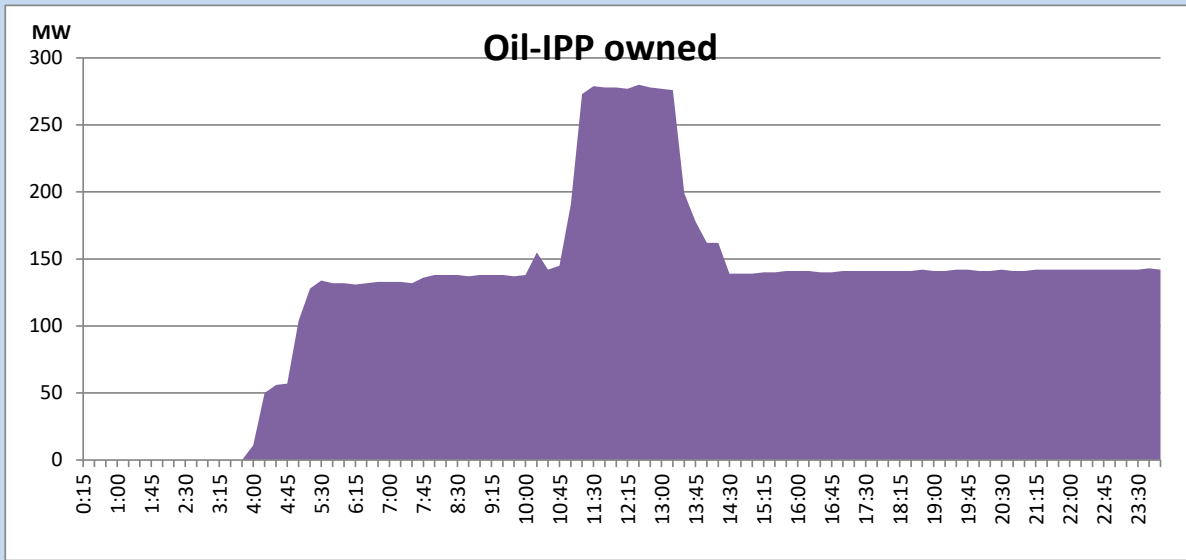
CEB Oil Plant Generation during the Previous day

July 22, 2022



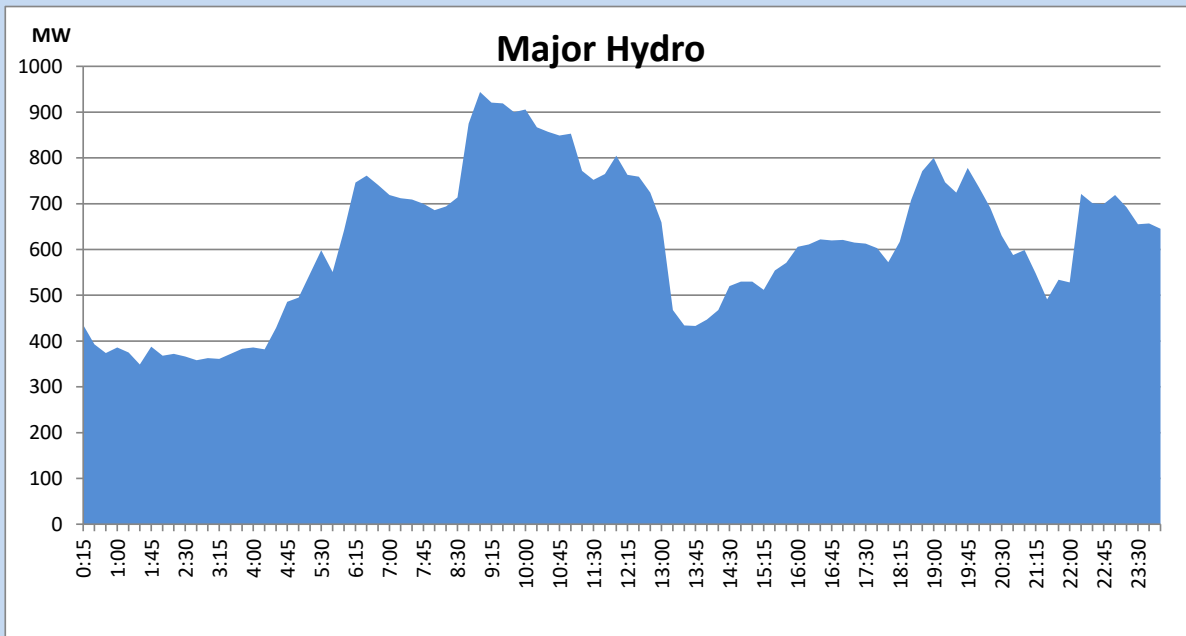
IPP Oil Plant Generation during the Previous day

July 22, 2022



Major Hydro Generation during the Previous day

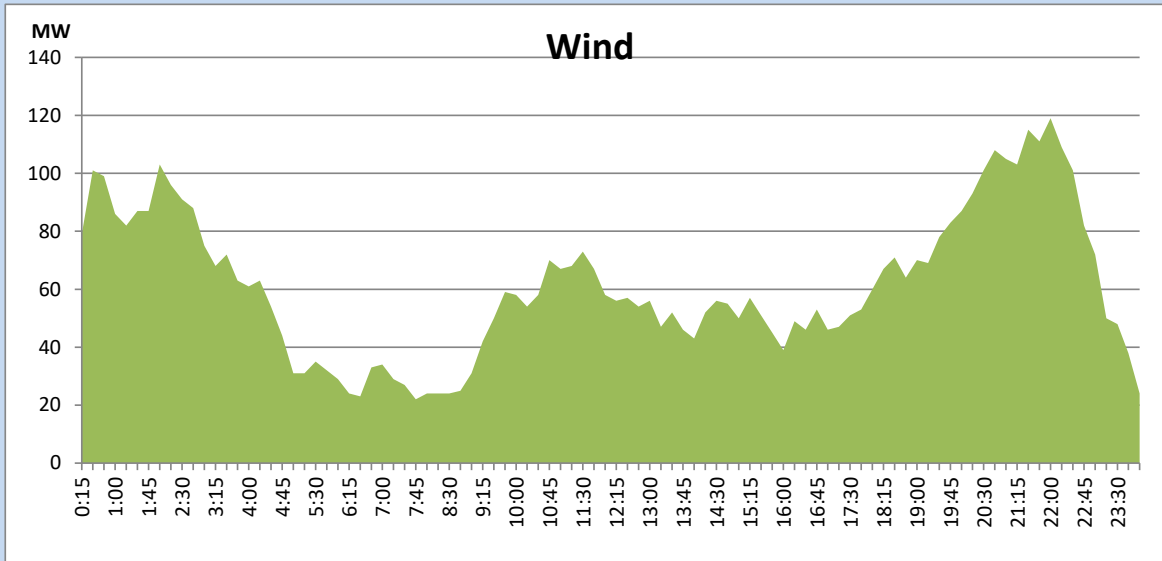
July 22, 2022



Wind Generation during the Previous day

July 22, 2022

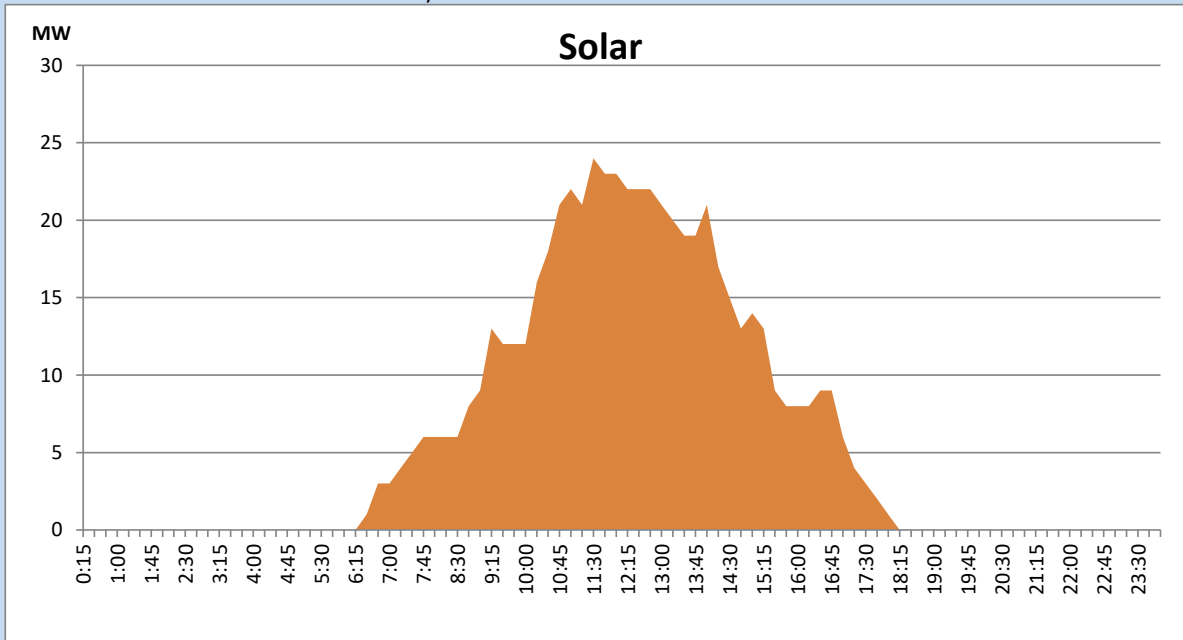
Based on Telemetered Power Stations only



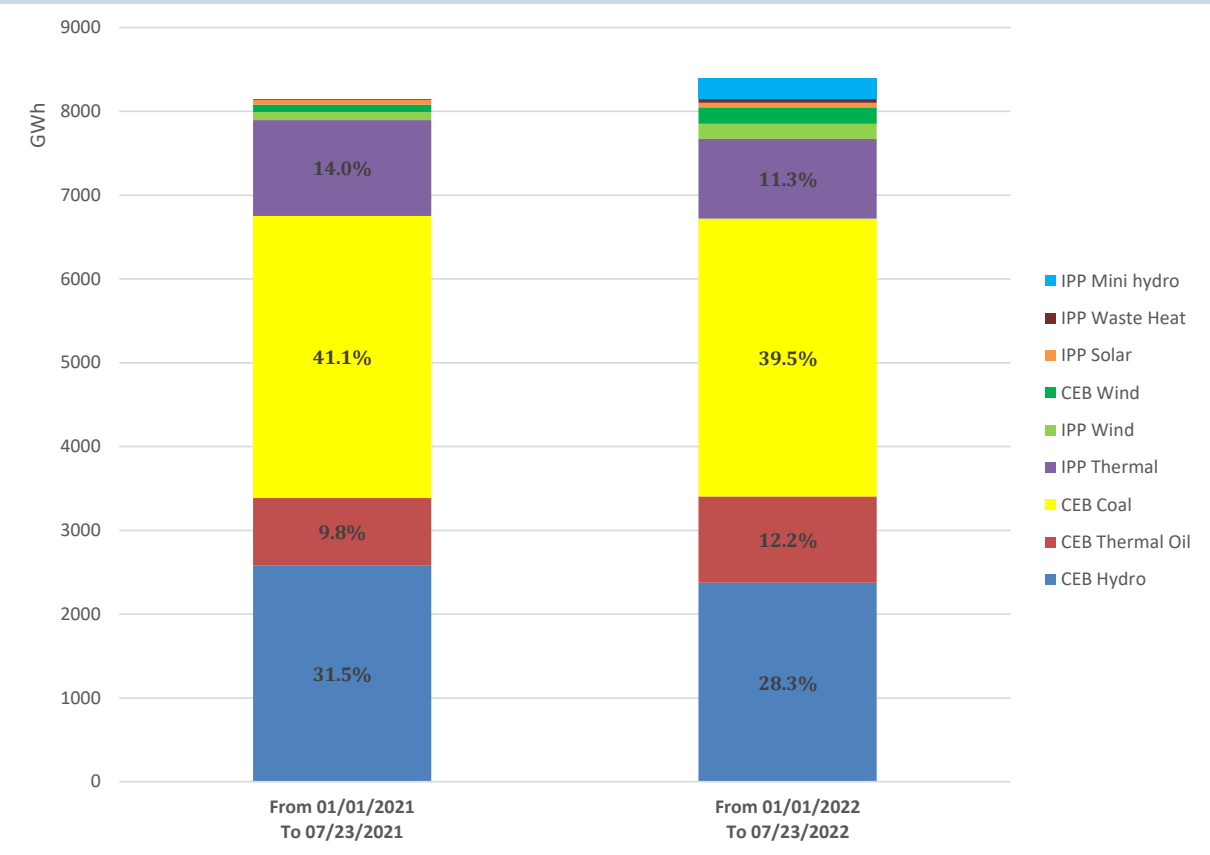
Solar Generation during the Previous day

July 22, 2022

Based on Telemetered Power Stations only



Cumulative Dispatch Comparison with Last Year



Thermal Plant Fuel types

Power Station	Primary Fuel
CEB Thermal	
Sapugaskanda 1	Heavy Fuel
Sapugaskanda 2	Heavy Fuel
Kelanitissa Small Gas Turbines	Auto Diesel
GT 7 - Kelanitissa	Auto Diesel
Kelanitissa CCY	Naphtha or Diesel
Lakvijaya 1	Coal
Lakvijaya 2	Coal
Lakvijaya 3	Coal
Uthuru Janani	Heavy Fuel
Barge CEB	Heavy Fuel

Power Station	Primary Fuel
Private Thermal	
Sojitz - Kelanitissa	Auto Diesel
West Coast	Auto Diesel / Heavy Fuel
ACE Matara	Heavy Fuel
ACE Embilipitiya	Heavy Fuel

Major Incidents during the day -as reported by CEB morning of

July 24, 2022

- 1) Rotational manual load shedding was carried out from 10:20 hrs to 12:00 hrs and 14:40 hrs to 22:00 hrs.
- 2) Kotugoda- Veyangoda cct 02 tripped and A/R from both ends at 12:23hrs, due to the operation of distance protection.
- 3) All feeders in Anuradhapura 132kV GSS were manually switched off at 15:05 hrs after detecting smoke from 33kV GIS. The cause was identified as a failure in the VT of Feeder 09.All feeders except Feeder 09 were energized by 17:32 hrs. Feeder 09 is yet to be restored
- 4)Kukule Unit 02 tripped at 00:55 hrs(24.07.2022),rejecting 38MW from the system due to the operation of the sluice tender gate summarize alarm.Kukule Unit 01 also made unavailable as a result of the alarm operated.Both Kukule units made available at 02:15 hrs.