

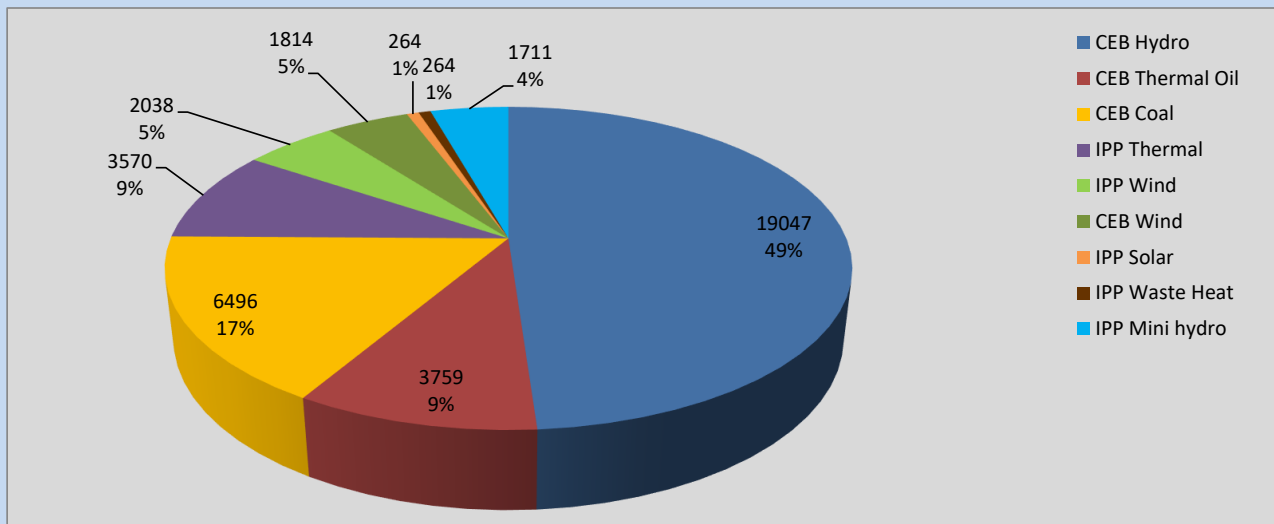
# Generation and Reservoirs Statistics

August 22, 2022



PUBLIC UTILITIES COMMISSION OF SRI LANKA

## Daily Generation Mix in MWh



**Total Generation** **38,963 MWh**

Note: Above data is excluding contribution from Roof Top Solar, 1MW Solar and certain Mini Hydro plants

## Cumulative Dispatch

Note: Following data is Excluding contribution from Roof Top Solar, 1MW solar and Mini Hydro plants

### For Current Month

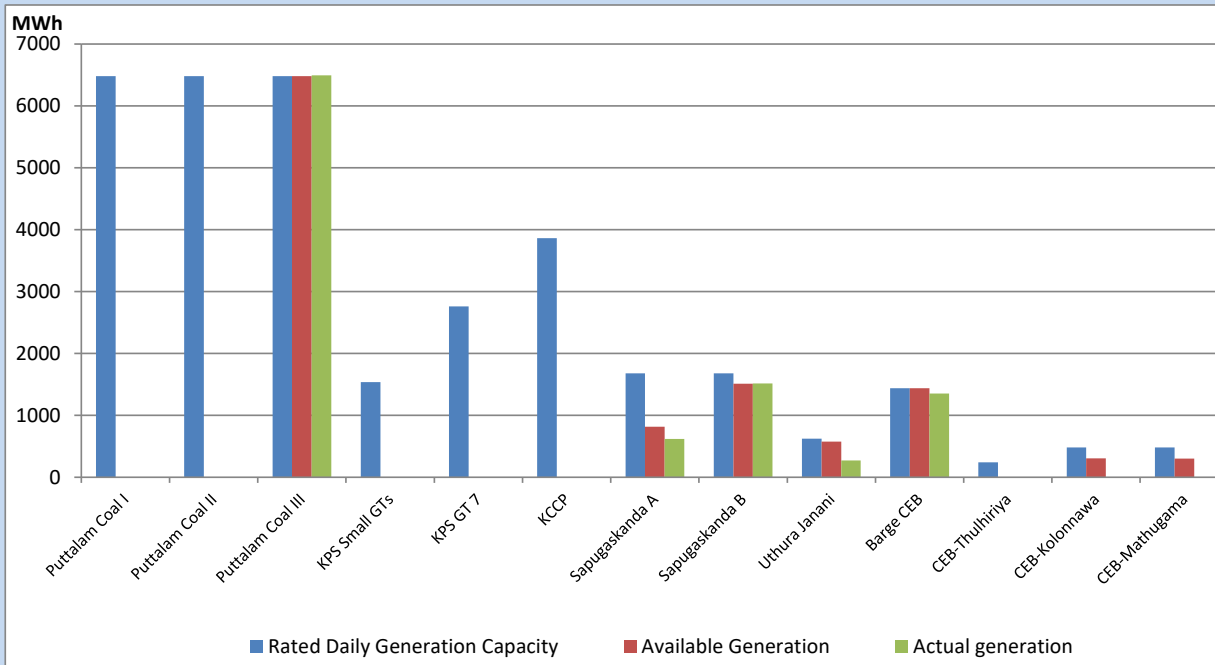
Category	Dispatch (GWh)	Percentage
CEB Hydro	446.42	52.32%
CEB Thermal Oil	39.35	4.61%
CEB Coal	207.46	24.32%
IPP Thermal	39.07	4.58%
SPP Wind	38.78	4.55%
CEB Wind	37.08	4.35%
SPP Solar	6.14	0.72%
SPP Solid Waste	3.42	0.40%
Mini Hydro	35.46	4.16%
<b>Total</b>	<b>853.18</b>	

### For Current Year

Category	Dispatch (GWh)	Percentage
CEB Hydro	2,944.6	30.86%
CEB Thermal Oil	1,094.7	11.47%
CEB Coal	3,627.1	38.01%
IPP Thermal	1,011.5	10.60%
SPP Wind	222.7	2.33%
CEB Wind	238.3	2.50%
SPP Solar	60.1	0.63%
SPP Solid Waste	47.5	0.50%
Mini Hydro	296.5	3.11%
<b>Total</b>	<b>9,542.8</b>	

## CEB owned Thermal Plant Dispatch

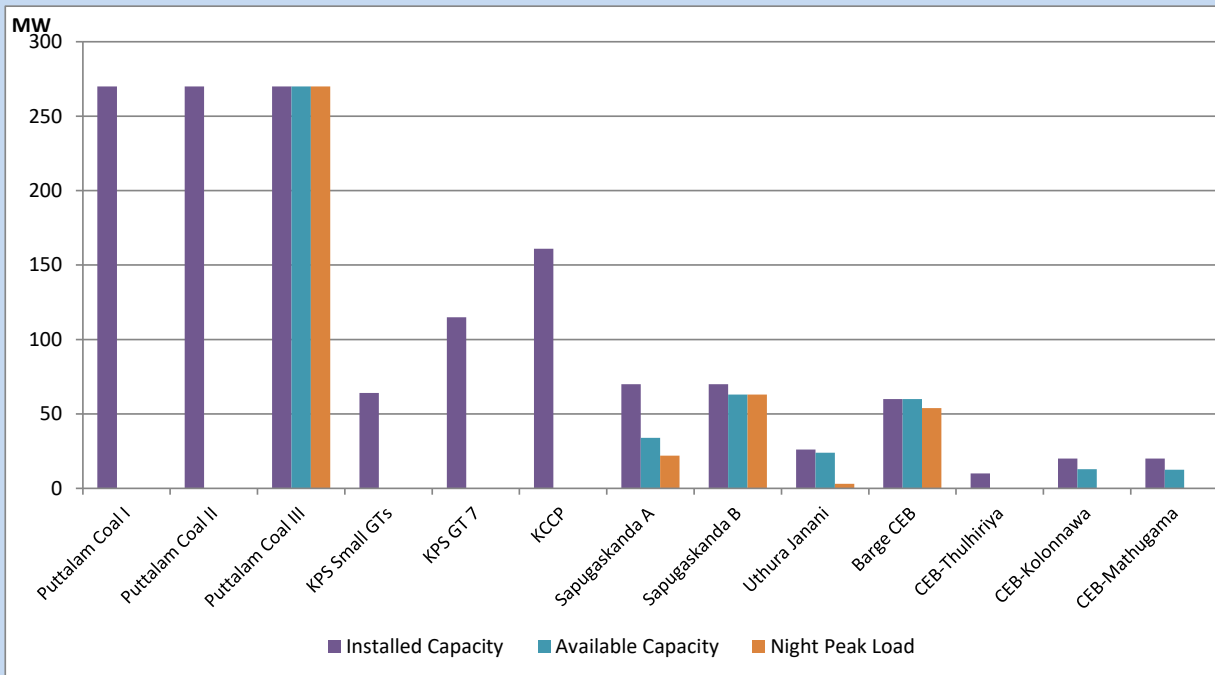
August 22, 2022



Available Generation is estimated based on plant availability at 6.00am on

August 23, 2022

## CEB owned Thermal Plant Loading at the Night Peak



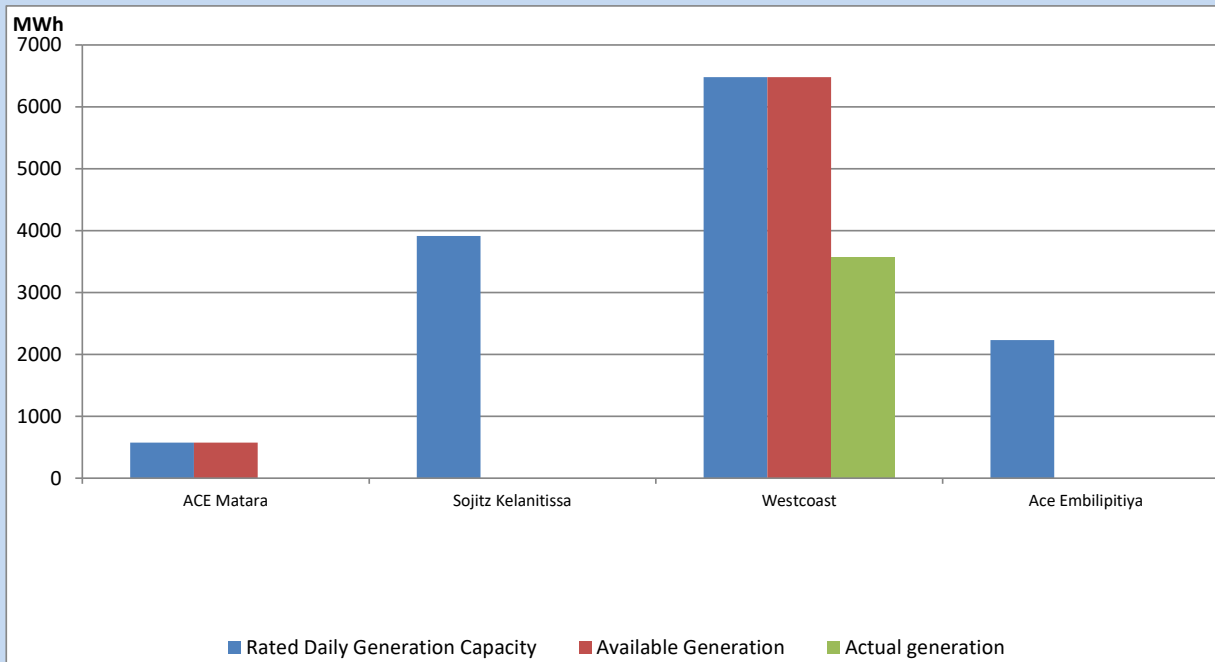
Note- Plant availability is recorded at 6.00 am on

August 23, 2022

## IPP owned Thermal Plant Dispatch

August 22, 2022

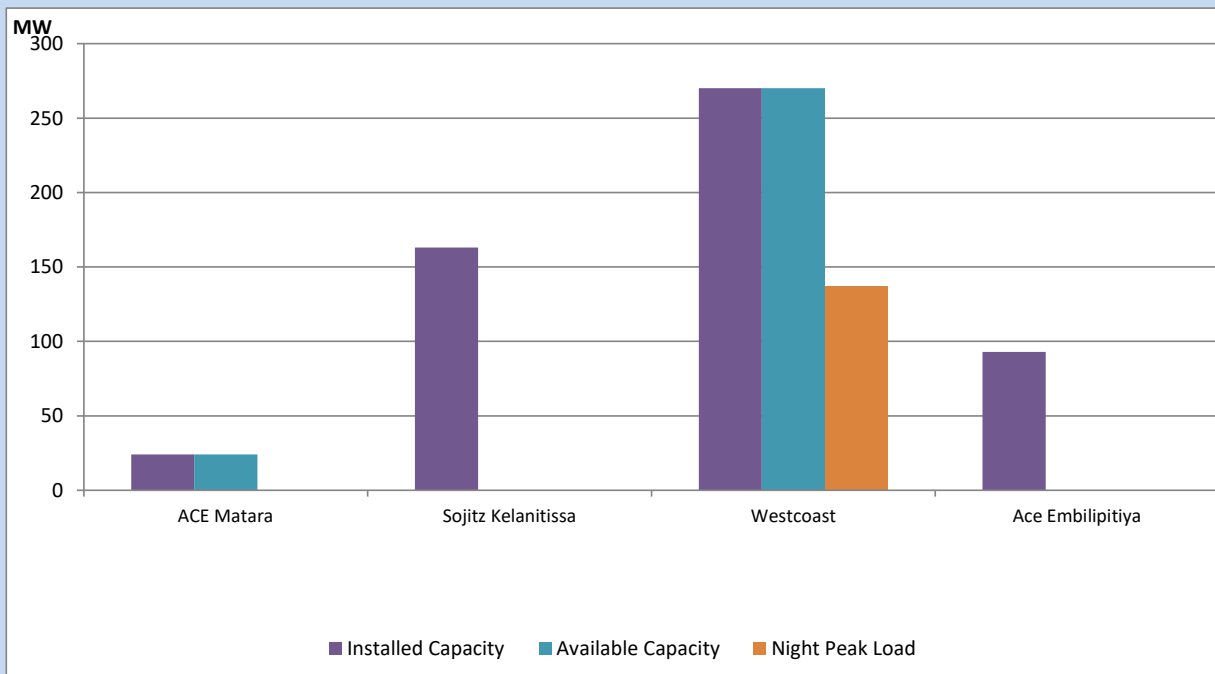
Asia Power, V Power Pallekale, Vpower Galle, V Power Horana, Vpower Hambantota, Vpower Valachchena and Altaqa Mahiyanganaya are not available due to expiration of PPAs



Available Generation is estimated based on plant availability at 6.00am on

August 23, 2022

## IPP owned Thermal Plant Loading at the Night Peak

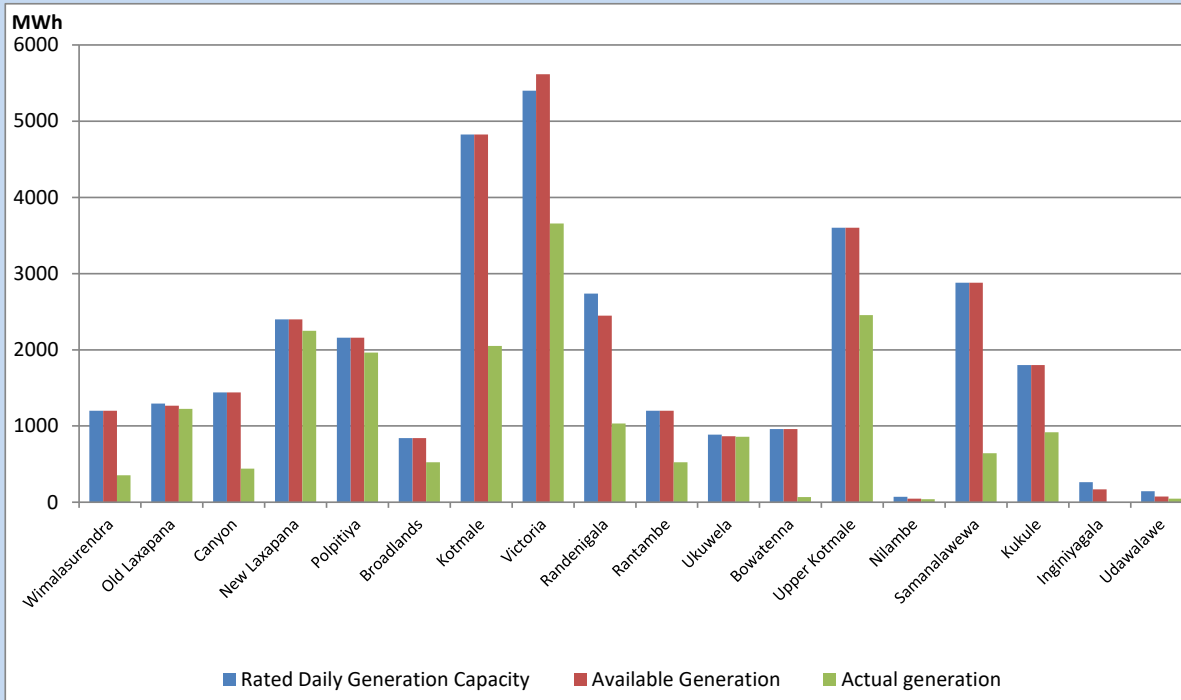


Note- Plant availability is recorded at 6.00 am on

August 23, 2022

## Major Hydro Plant Dispatch

August 22, 2022

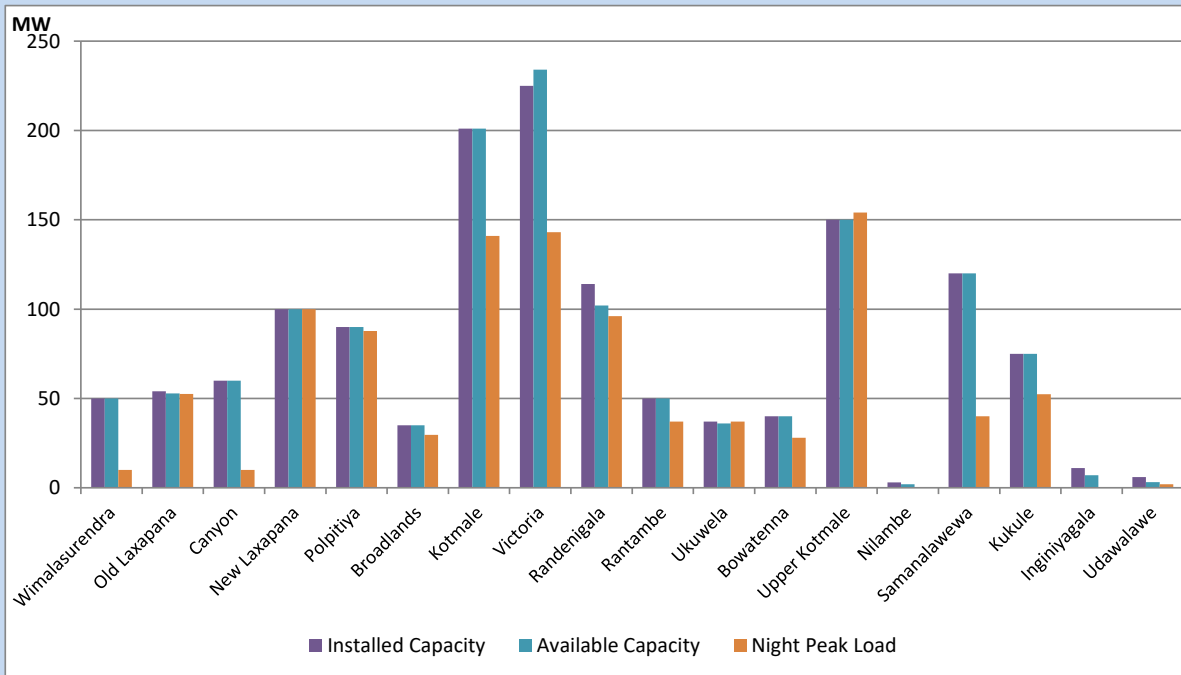


Available Generation is estimated based on plant availability at 6.00am on August 23, 2022  
 Broadlands power plant is operating in the Commissioning Stage

August 23, 2022

## Major Hydro Plant Loading at Night Peak

August 22, 2022



Note- Plant availability is recorded at 6.00 am on August 23, 2022  
 Broadlands power plant is operating in the Commissioning Stage

## Summary of Major Plant performance

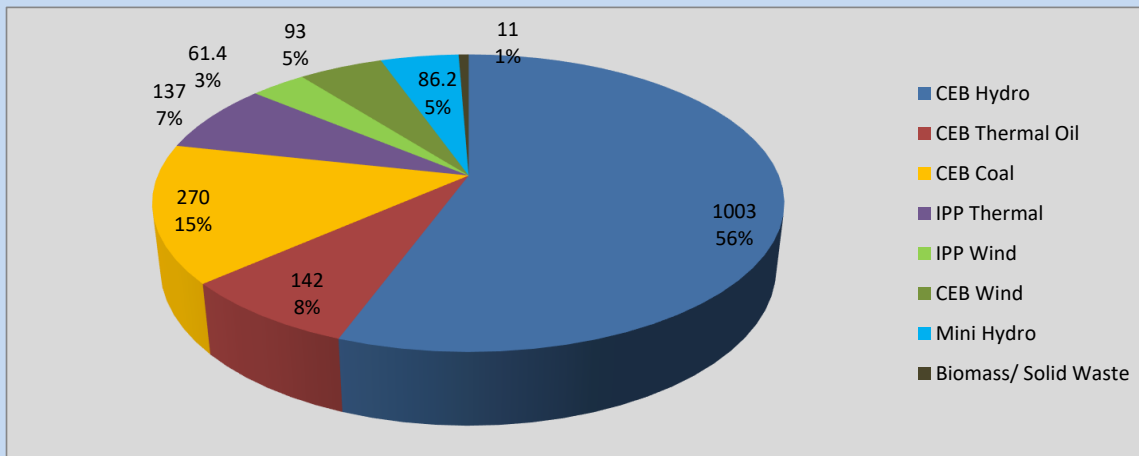
Plant	Installed Capacity	Plant Availability	Night peak Load	Plant Dispatch
	(MW)	(MW)	(MW)	(MWh)
Wimalasurendra	50	50	10	352
Old Laxapana	54	53	53	1,226
Canyon	60	60	10	442
New Laxapana	100	100	100	2,251
Polpitiya	90	90	88	1,963
Broadlands	35	35	30	524
Kotmale	201	201	141	2,050
Victoria	225	234	143	3,659
Randenigala	114	102	96	1,033
Rantambe	50	50	37	524
Ukuwela	37	36	37	859
Bowatenna	40	40	28	66
Upper Kotmale	150	150	154	2,455
Nilambe	3	2	0	38
Samanalawewa	120	120	40	641
Kukule	75	75	52	918
Inginiyagala	11	7	0	0
Udawalawe	6	3	2	46
Puttalam Coal I	270	0	0	0
Puttalam Coal II	270	0	0	0
Puttalam Coal III	270	270	270	6,496
KPS Small GTs	64	0	0	0
KPS GT 7	115	0	0	0
KCCP	161	0	0	0
Sapugaskanda A	70	34	22	621
Sapugaskanda B	70	63	63	1,514
Uthura Janani	26	24	3	271
Barge CEB	60	60	54	1,353
CEB-Thulhiriya	10	0	0	0
CEB-Kolonnawa	20	13	0	0
CEB-Mathugama	20	13	0	0
ACE Matara	24	24	0	0
Sojitz Kelanitissa	163	0	0	0
West Coast	270	270	137	3,570
ACE Embilipitiya	93	0	0	0
<b>Total</b>	<b>3,397</b>	<b>2,178</b>	<b>1,821</b>	<b>38,963</b>

Plant availability is the availability recorded at 6 am on

August 23, 2022

## Contribution to the Night Peak in MW

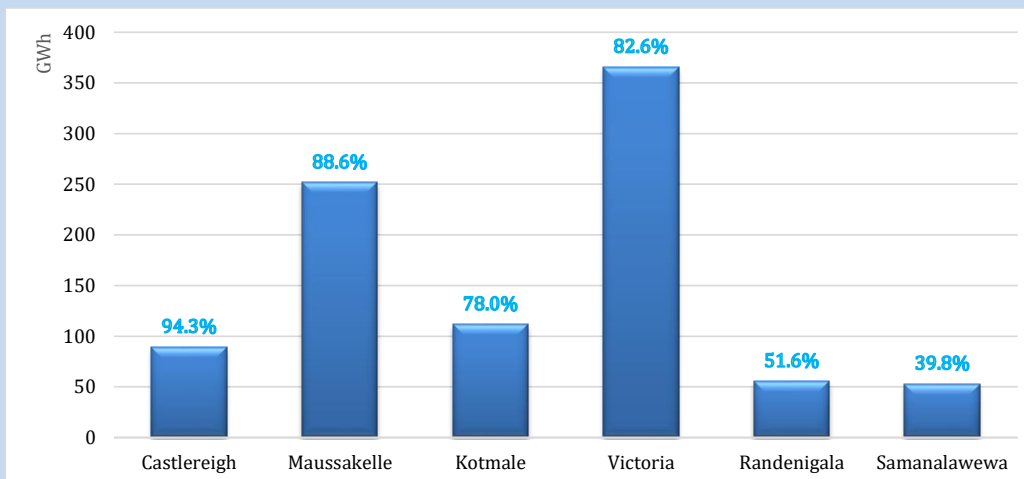
August 22, 2022



Night Peak*	1,803.7 MW
Day Peak	1,925.3 MW
Minimum Demand	1,215.6 MW

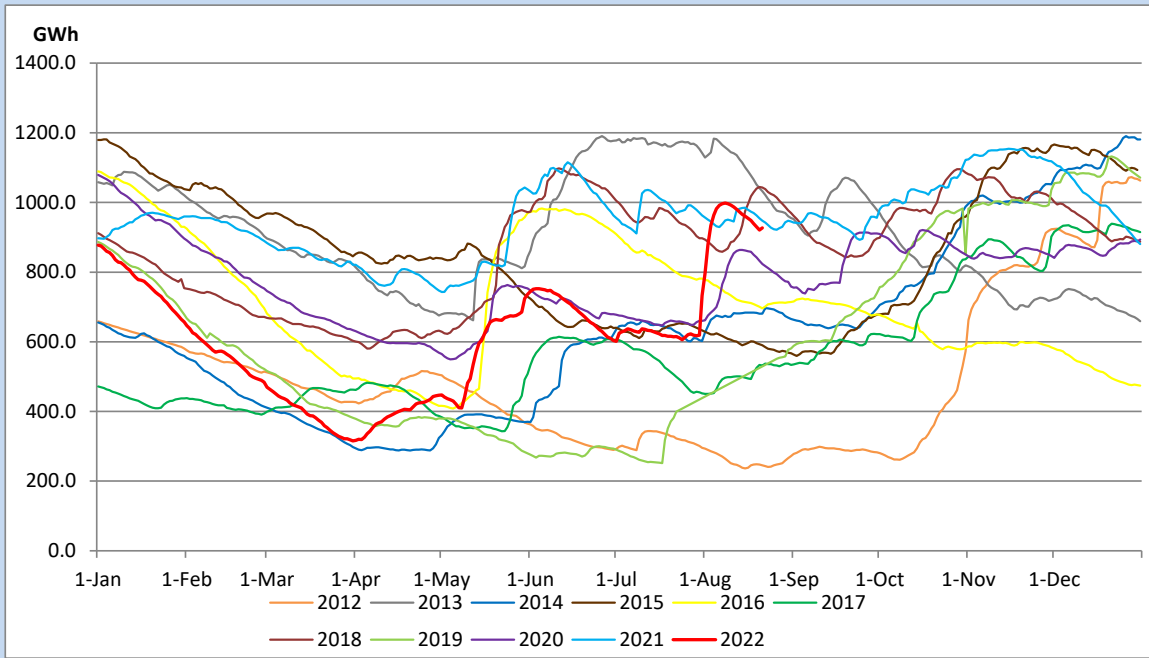
Above figures are excluding contribution from Roof Top Solar, 1MW solar, certain Wind plants and Mini Hydro plants

## Reservoir Levels - as at 06.00 Hr on August 23, 2022

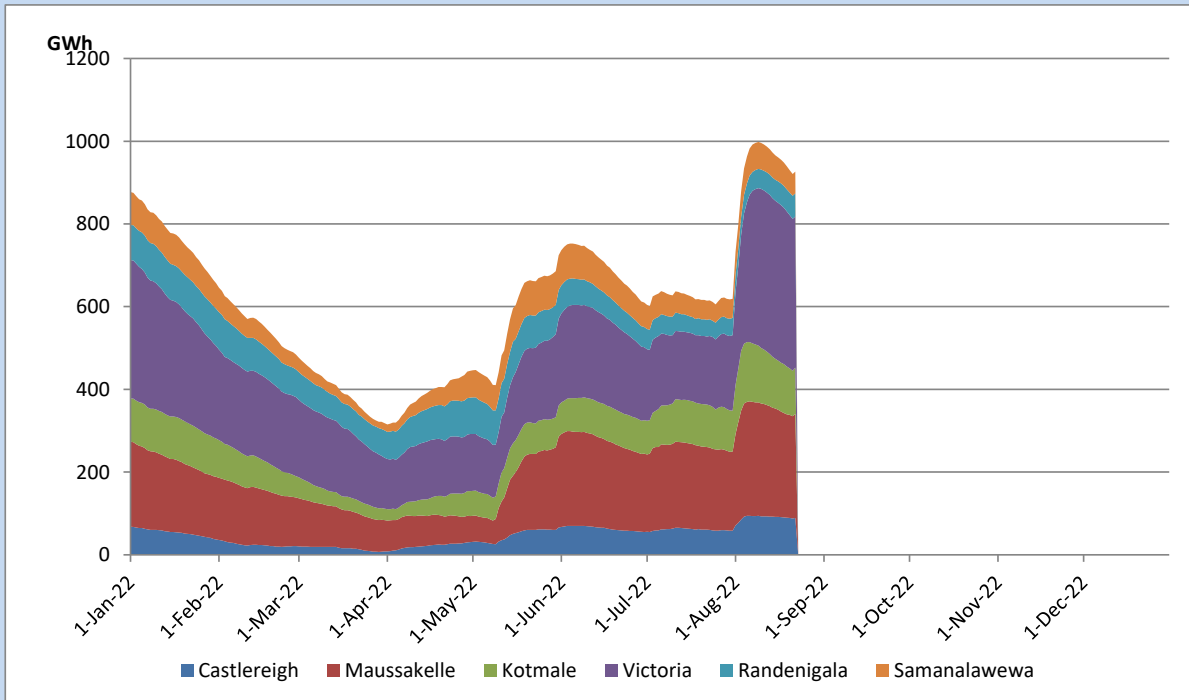


Total Reservoir Level	926.7 GWh
% of Total capacity	76.9%

## Comparison of Total Reservoir Storage Levels with Past Years

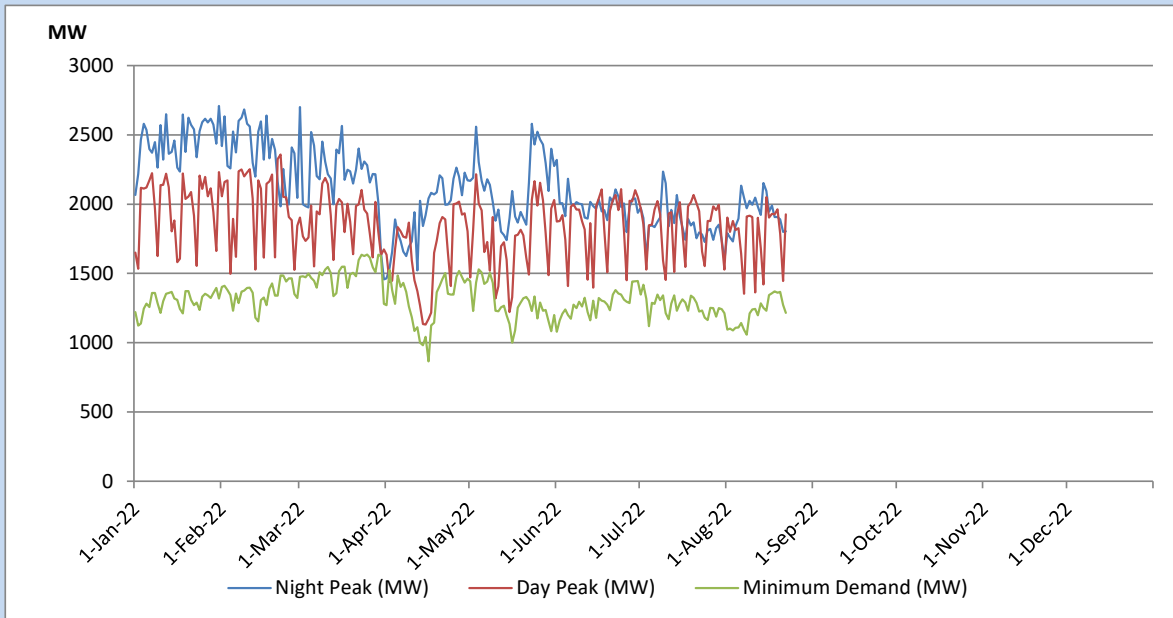


## Variation of Major Hydro Reservoir Levels in the current year (GWh)





## Variation of Demand during the current year

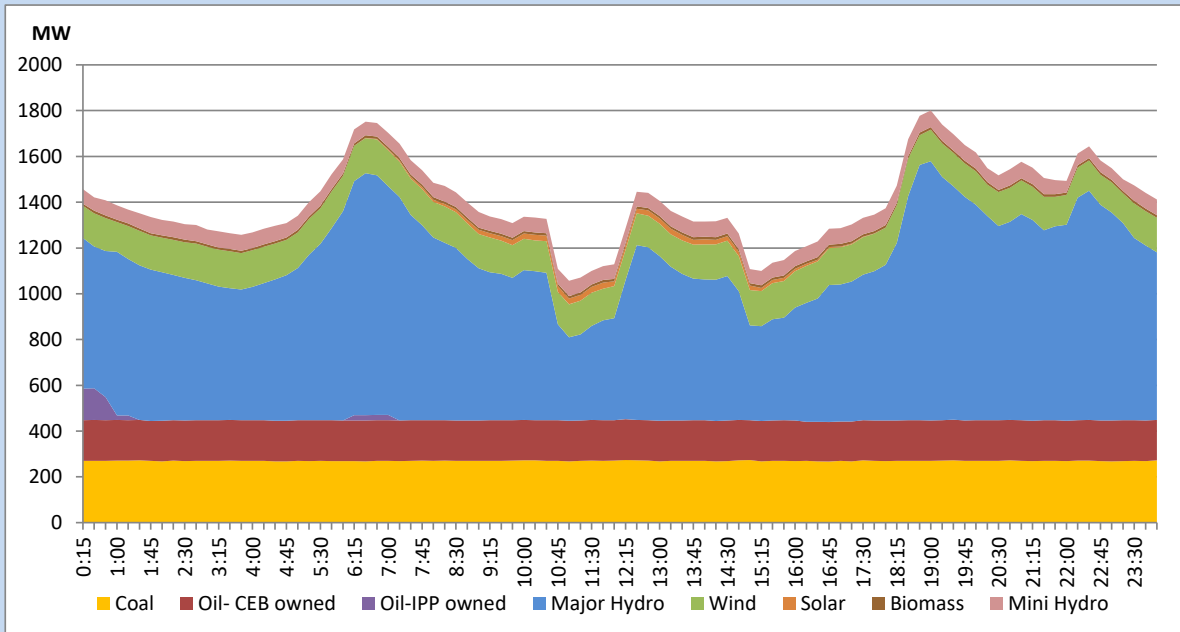


The above figures are excluding contribution from Roof Top Solar, 1MW solar, certain Wind plants and Mini Hydro plants

## Daily Load Curve of the Previous day

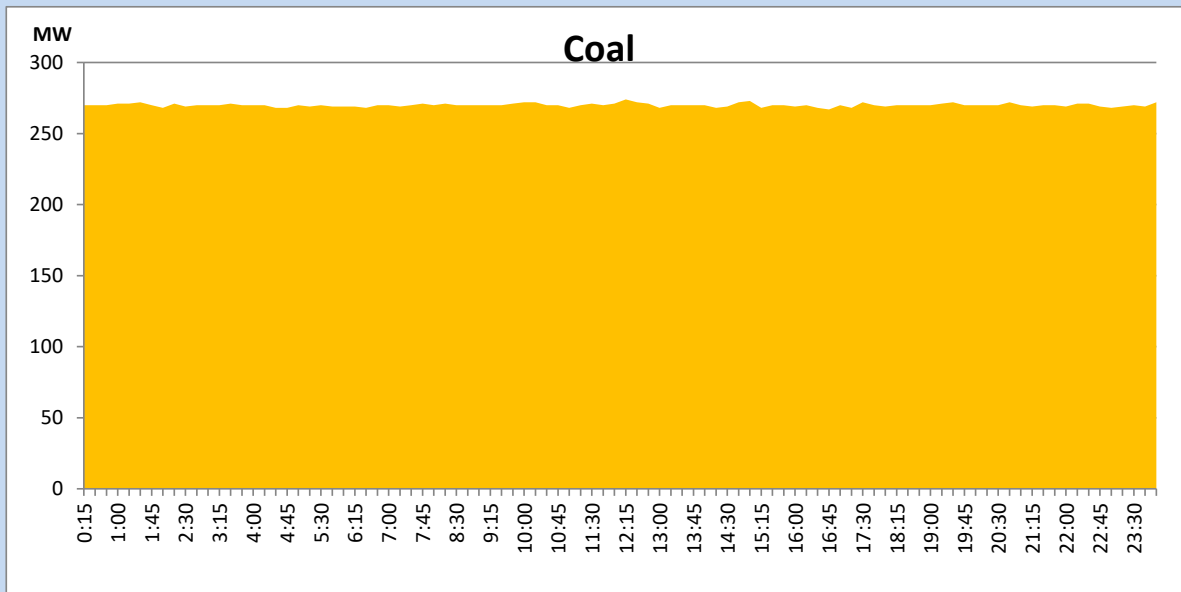
August 21, 2022

Solar and wind data is based on Telemetered Power Stations only



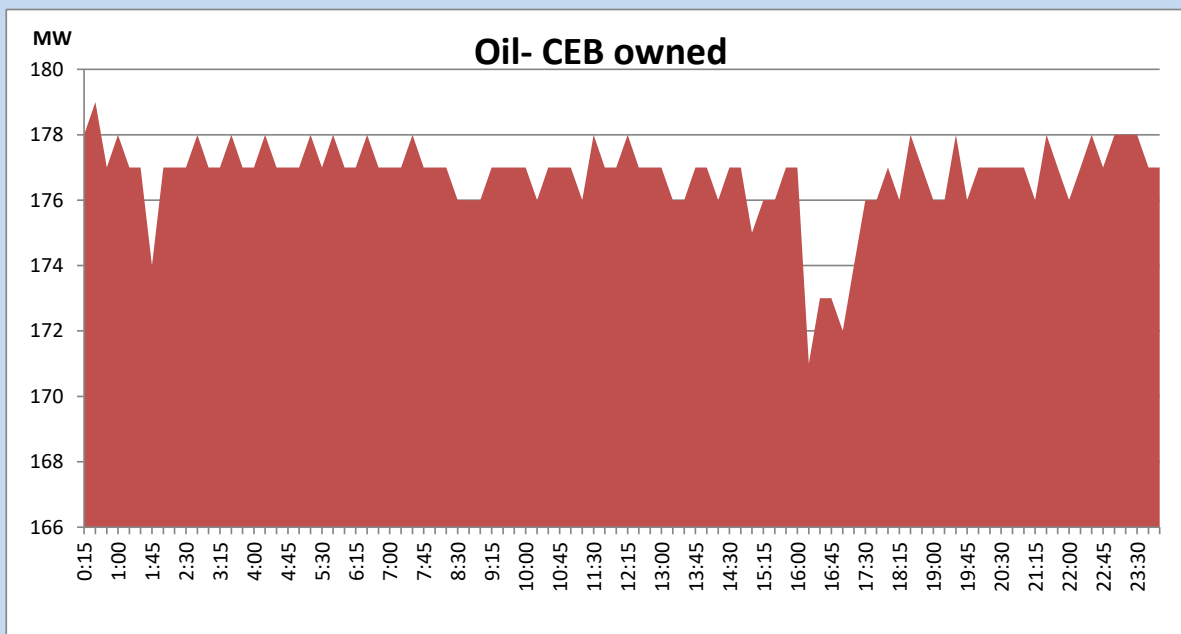
## Coal Generation during the Previous day

August 21, 2022



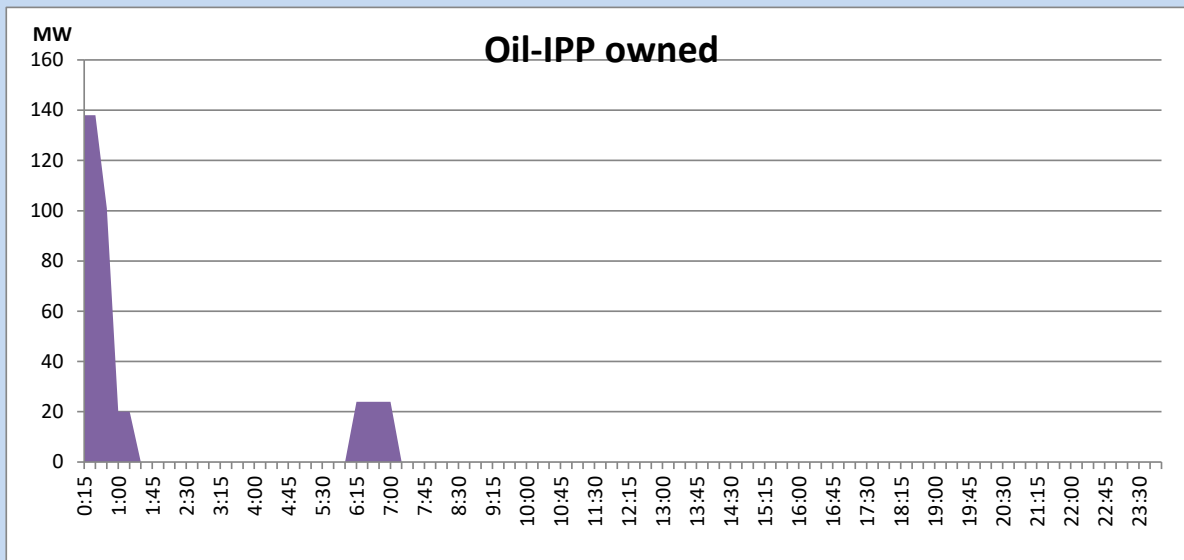
## CEB Oil Plant Generation during the Previous day

August 21, 2022



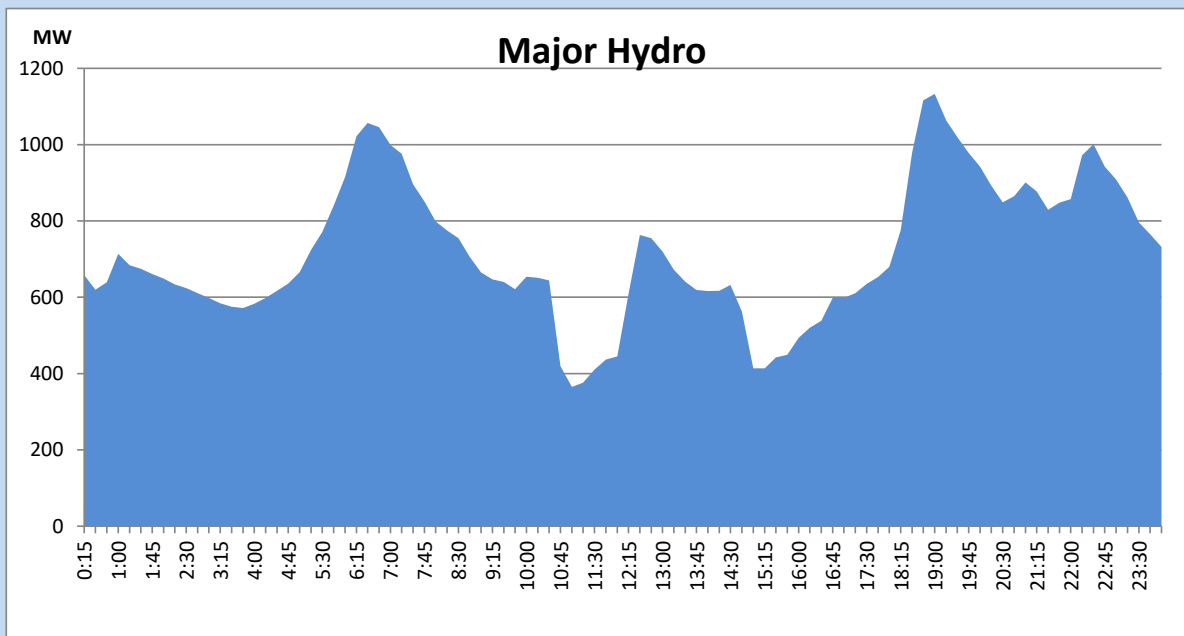
## IPP Oil Plant Generation during the Previous day

August 21, 2022



## Major Hydro Generation during the Previous day

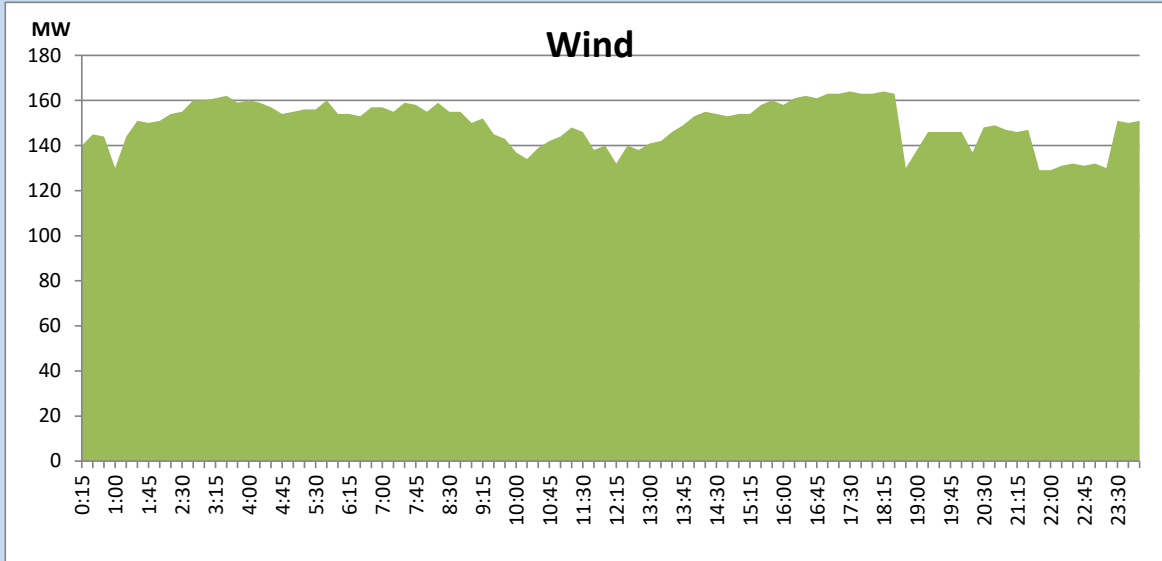
August 21, 2022



## Wind Generation during the Previous day

August 21, 2022

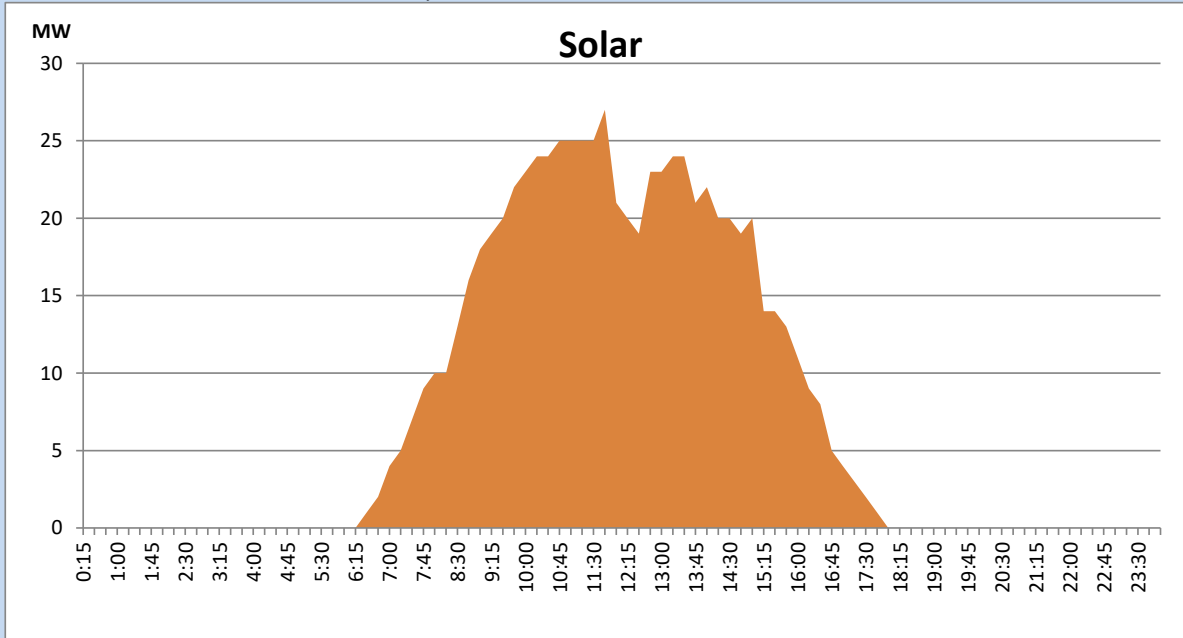
Based on Telemetered Power Stations only



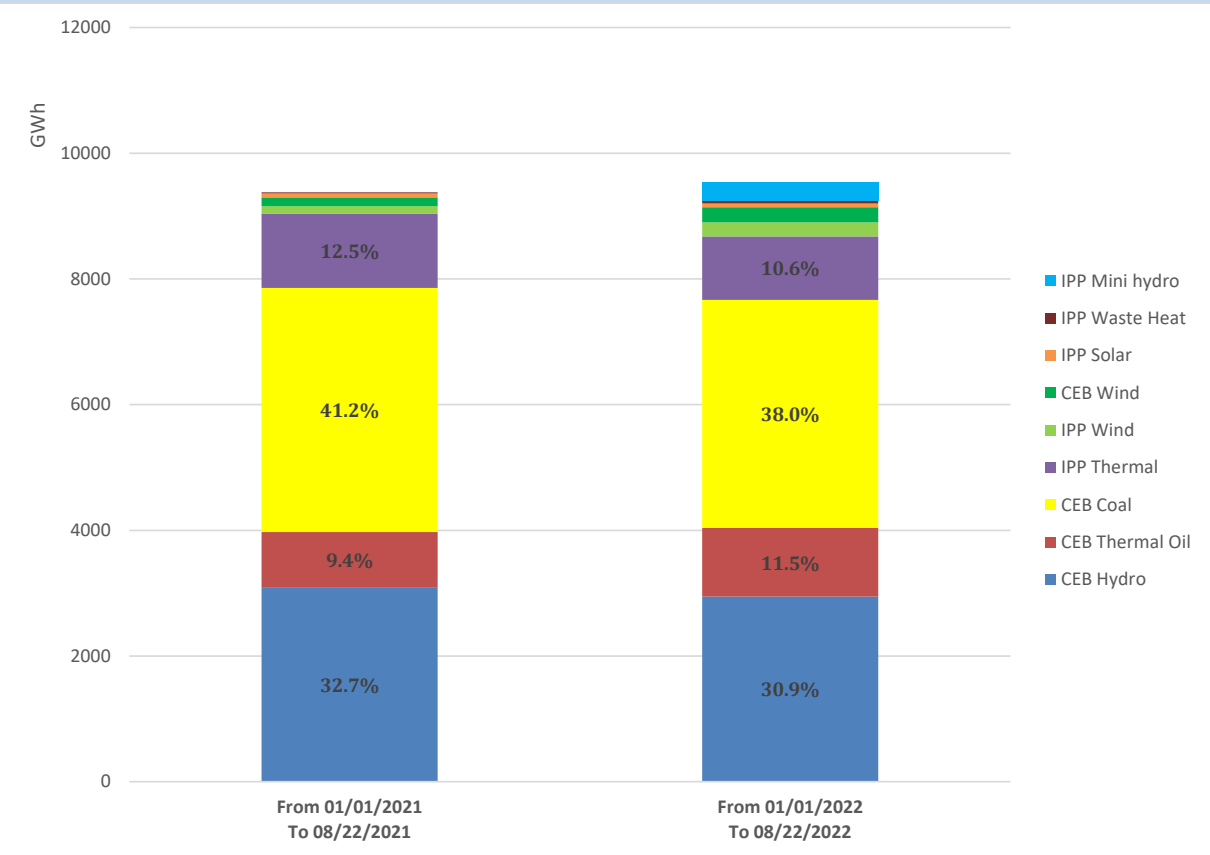
## Solar Generation during the Previous day

August 21, 2022

Based on Telemetered Power Stations only



# Cumulative Dispatch Comparison with Last Year



## Thermal Plant Fuel types

Power Station	Primary Fuel
CEB Thermal	
Sapugaskanda 1	Heavy Fuel
Sapugaskanda 2	Heavy Fuel
Kelanitissa Small Gas Turbines	Auto Diesel
GT 7 - Kelanitissa	Auto Diesel
Kelanitissa CCY	Naphtha or Diesel
Lakvijaya 1	Coal
Lakvijaya 2	Coal
Lakvijaya 3	Coal
Uthuru Janani	Heavy Fuel
Barge CEB	Heavy Fuel

Power Station	Primary Fuel
Private Thermal	
Sojitz - Kelanitissa	Auto Diesel
West Coast	Auto Diesel / Heavy Fuel
ACE Matara	Heavy Fuel
ACE Embilipitiya	Heavy Fuel

## Major Incidents during the day -as reported by CEB morning of

August 23, 2022

- 1) Rotational manual load shedding was carried out from 13:00 hrs to 22:00 hrs.
- 2) Norton pond spilling started at 18:10 hrs and stopped at 22:52 hrs.
- 3) Laxapana pond spilling started at 19:00 hrs and stopped at 21:15 hrs.