

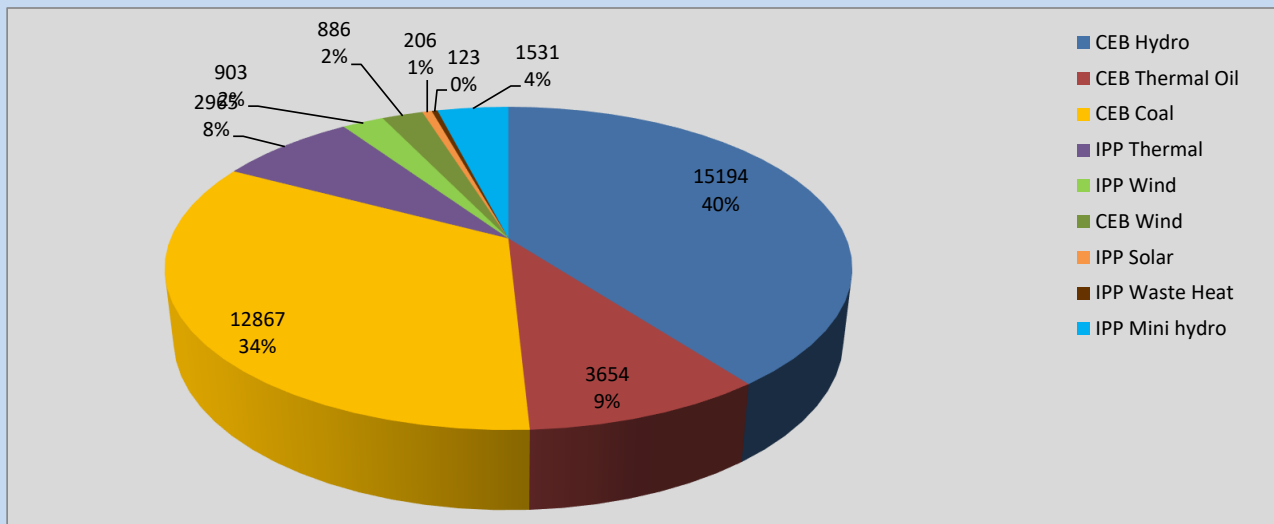
Generation and Reservoirs Statistics

July 22, 2022



PUBLIC UTILITIES COMMISSION OF SRI LANKA

Daily Generation Mix in MWh



Total Generation 38,329 MWh

Note: Above data is excluding contribution from Roof Top Solar, 1MW Solar and certain Mini Hydro plants

Cumulative Dispatch

Note: Following data is Excluding contribution from Roof Top Solar, 1MW solar and Mini Hydro plants

For Current Month

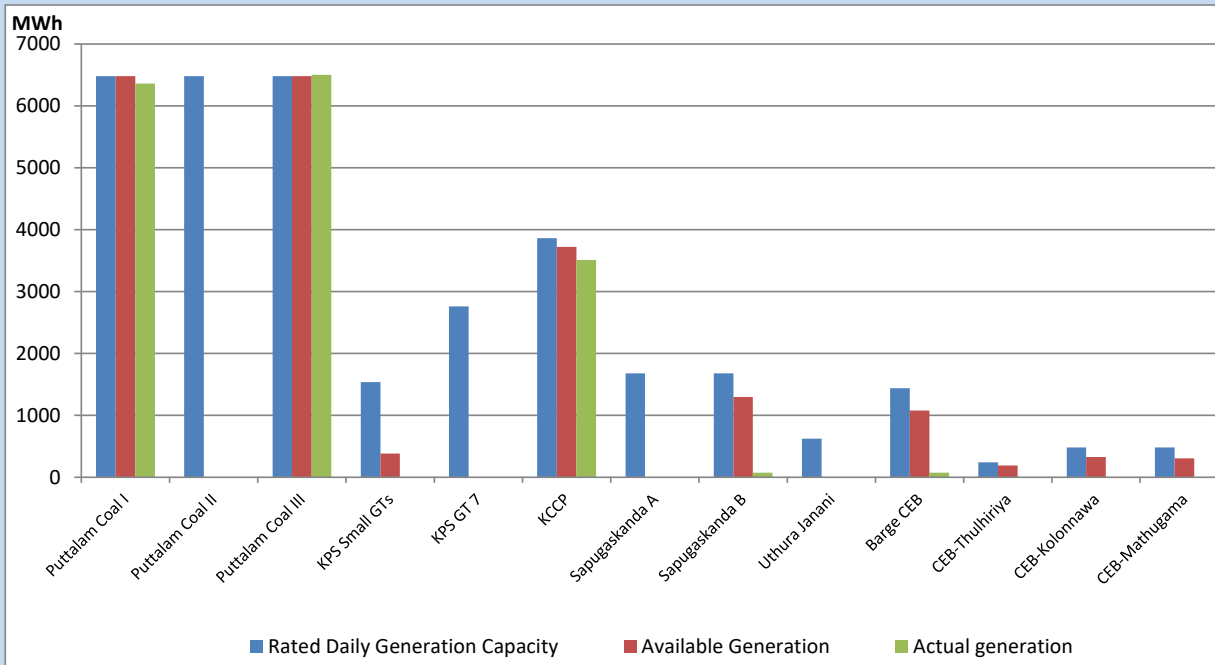
Category	Dispatch (GWh)	Percentage
CEB Hydro	307.15	36.05%
CEB Thermal Oil	85.80	10.07%
CEB Coal	276.01	32.40%
IPP Thermal	78.08	9.17%
SPP Wind	29.72	3.49%
CEB Wind	30.88	3.62%
SPP Solar	5.87	0.69%
SPP Solid Waste	4.74	0.56%
Mini Hydro	33.67	3.95%
Total	851.92	

For Current Year

Category	Dispatch (GWh)	Percentage
CEB Hydro	2,358.5	28.21%
CEB Thermal Oil	1,025.9	12.27%
CEB Coal	3,304.3	39.53%
IPP Thermal	949.7	11.36%
SPP Wind	179.6	2.15%
CEB Wind	196.8	2.35%
SPP Solar	52.3	0.63%
SPP Solid Waste	43.2	0.52%
Mini Hydro	249.3	2.98%
Total	8,359.3	

CEB owned Thermal Plant Dispatch

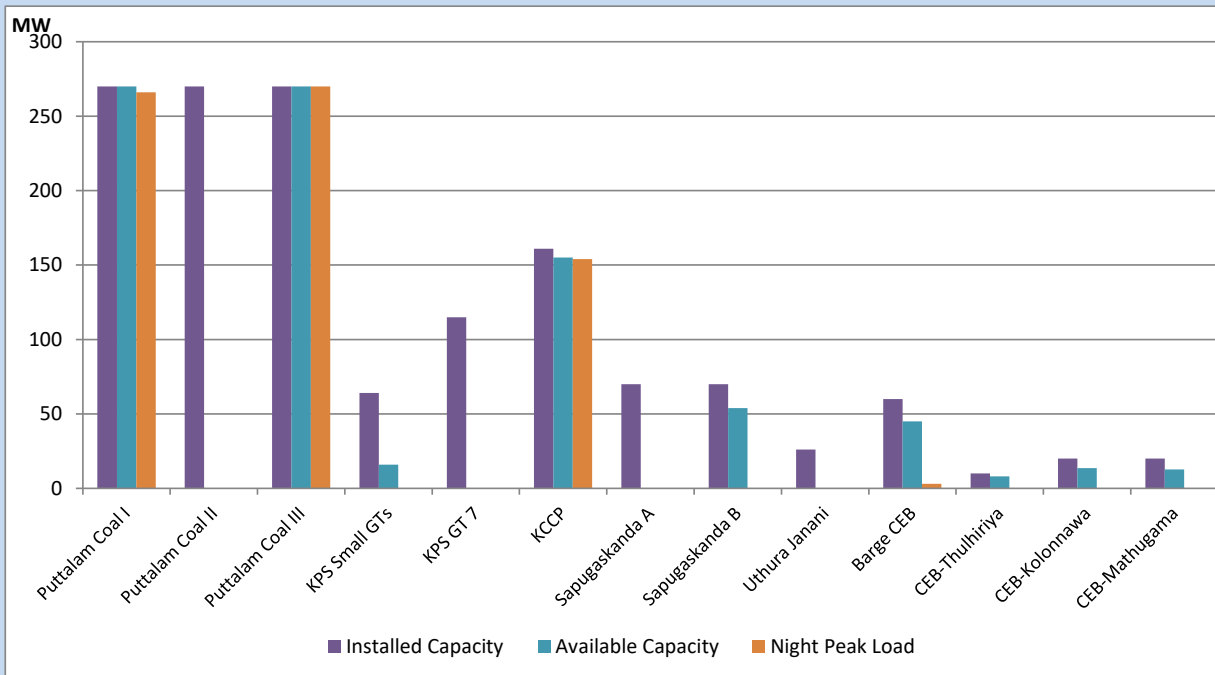
July 22, 2022



Available Generation is estimated based on plant availability at 6.00am on

July 23, 2022

CEB owned Thermal Plant Loading at the Night Peak



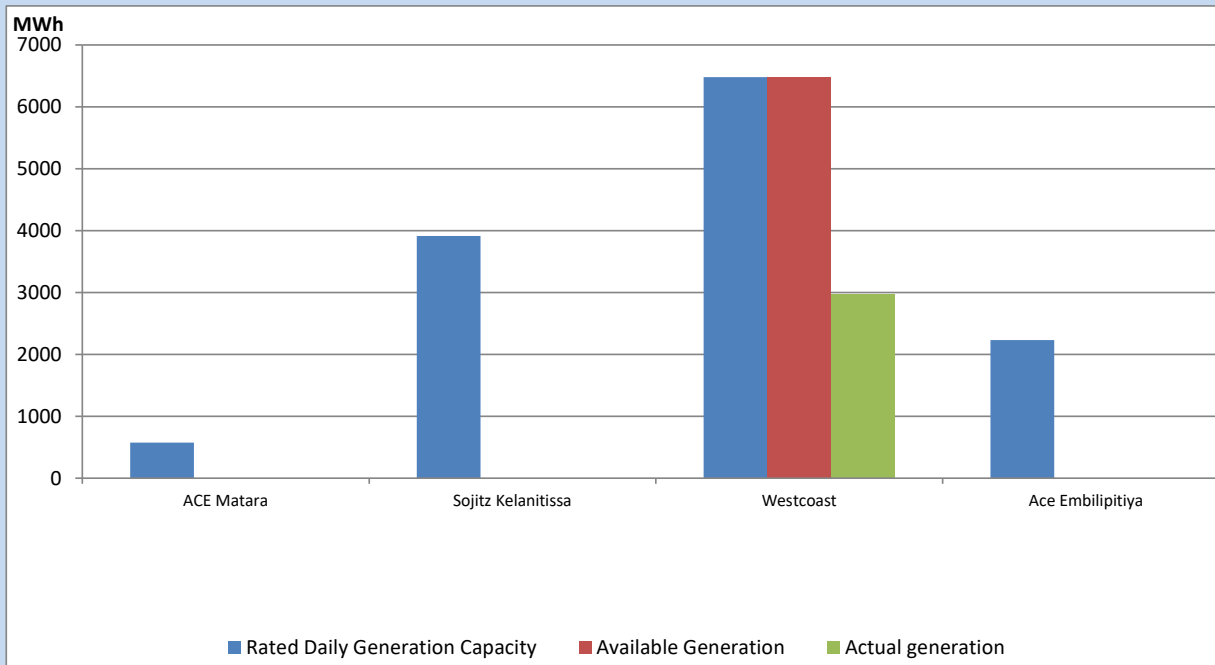
Note- Plant availability is recorded at 6.00 am on

July 23, 2022

IPP owned Thermal Plant Dispatch

July 22, 2022

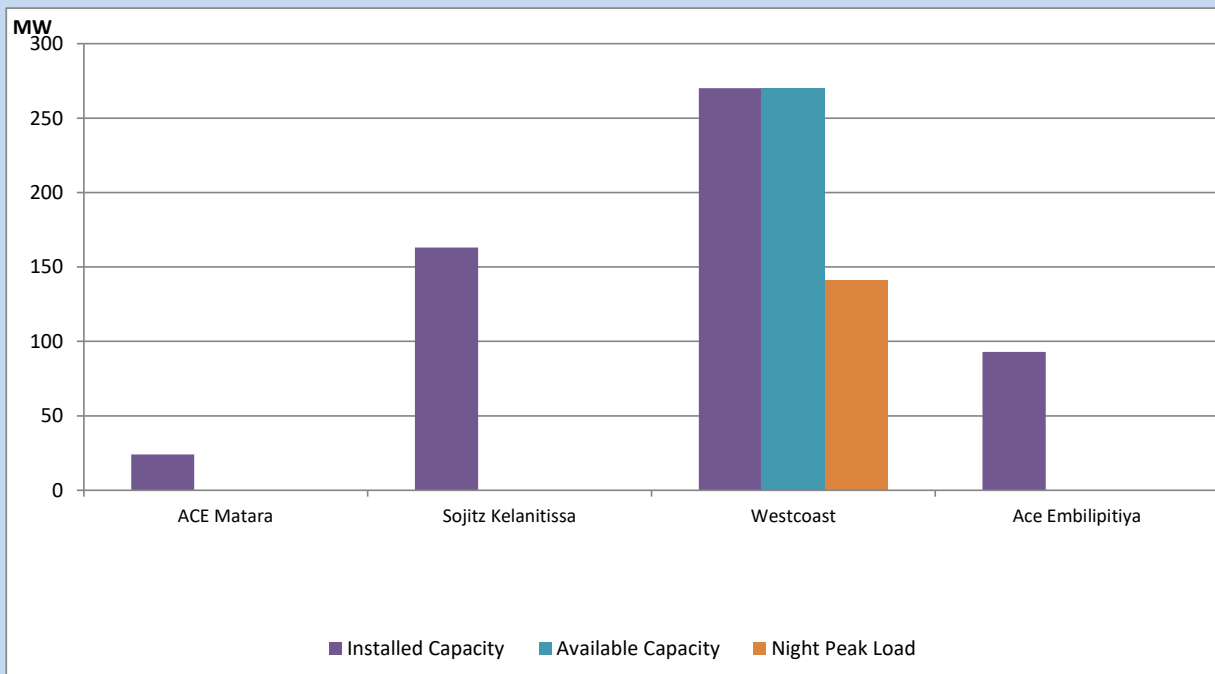
Asia Power, V Power Pallekale, Vpower Galle, V Power Horana, Vpower Hambantota, Vpower Valachchena and Altaqa Mahiyanganaya are not available due to expiration of PPAs



Available Generation is estimated based on plant availability at 6.00am on

July 23, 2022

IPP owned Thermal Plant Loading at the Night Peak

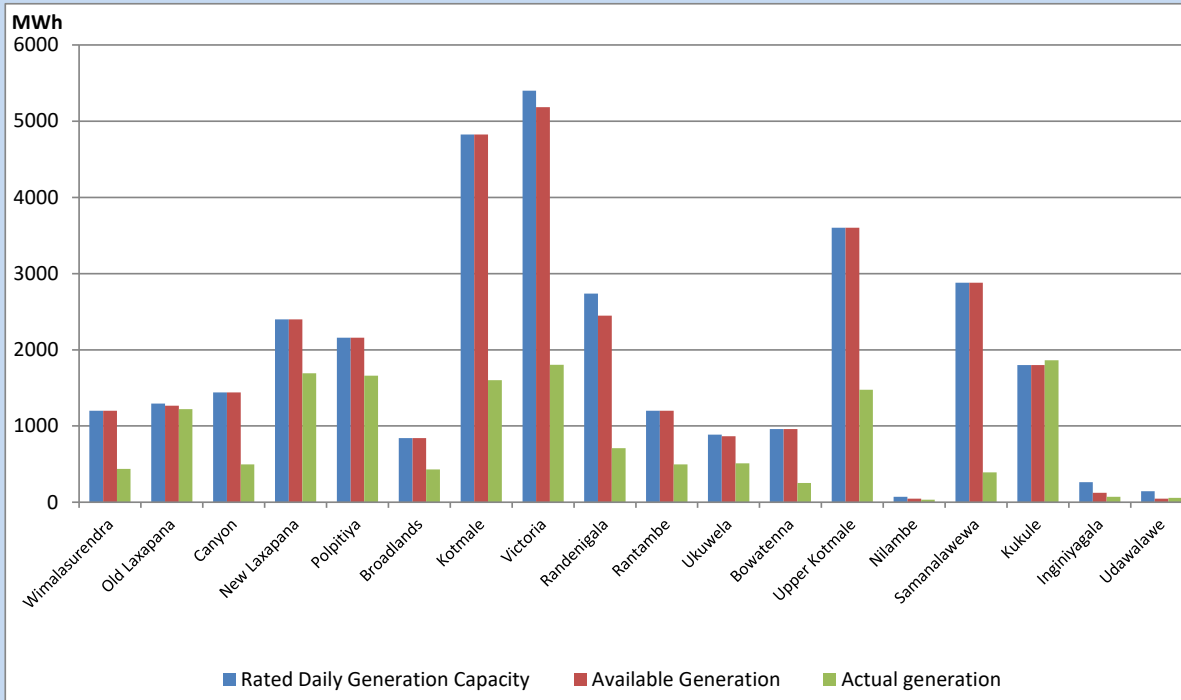


Note- Plant availability is recorded at 6.00 am on

July 23, 2022

Major Hydro Plant Dispatch

July 22, 2022

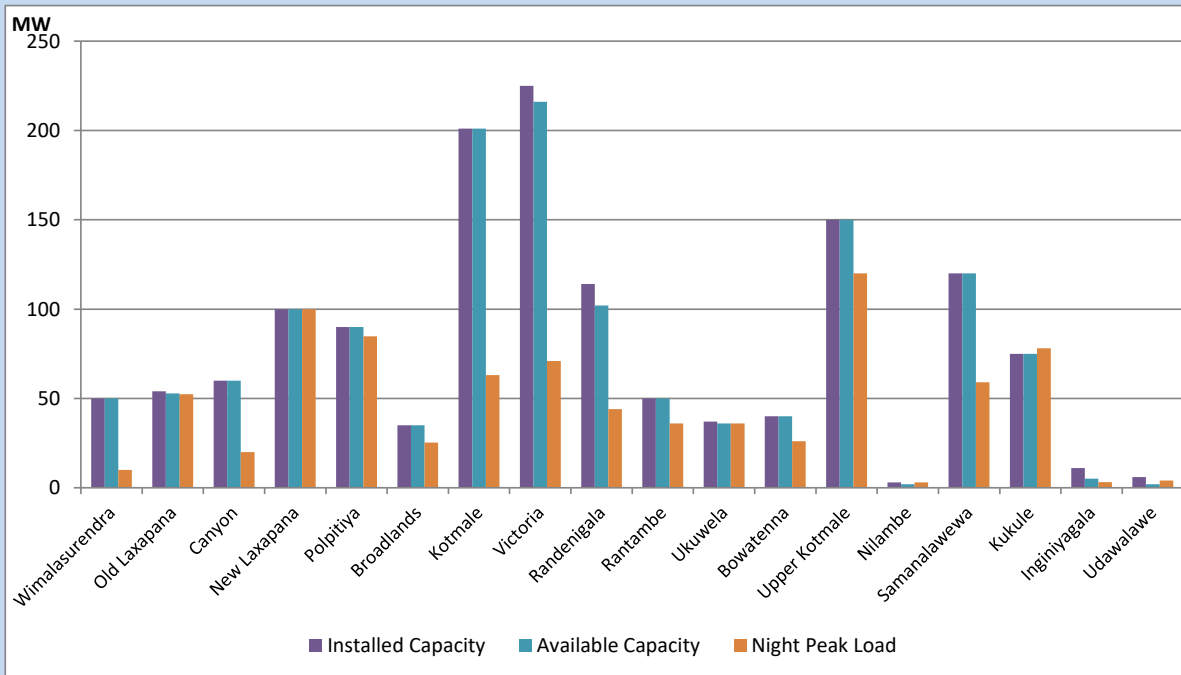


Available Generation is estimated based on plant availability at 6.00am on
Broadlands power plant is operating in the Commissioning Stage

July 23, 2022

Major Hydro Plant Loading at Night Peak

July 22, 2022



Note- Plant availability is recorded at 6.00 am on
Broadlands power plant is operating in the Commissioning Stage

July 23, 2022

Summary of Major Plant performance

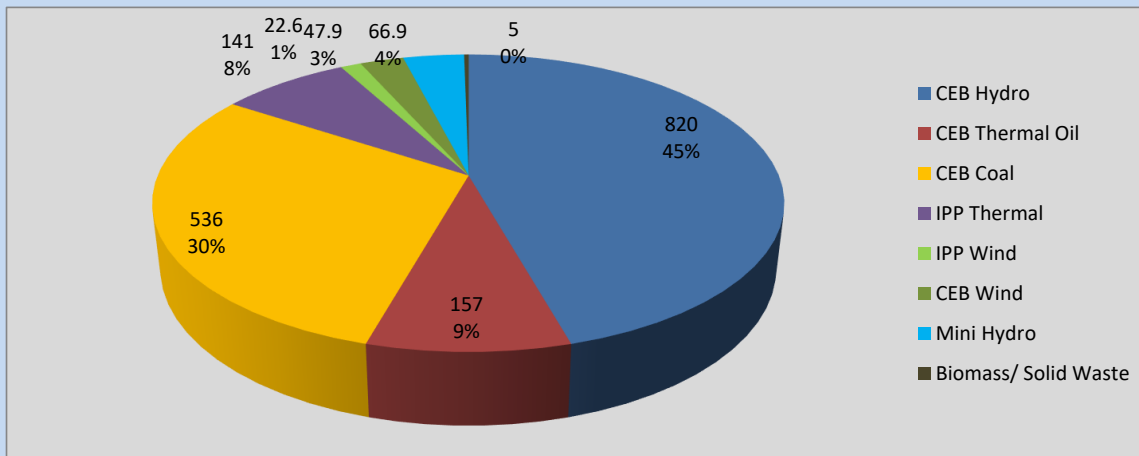
Plant	Installed Capacity	Plant Availability	Night peak Load	Plant Dispatch
	(MW)	(MW)	(MW)	(MWh)
Wimalasurendra	50	50	10	437
Old Laxapana	54	53	52	1,220
Canyon	60	60	20	497
New Laxapana	100	100	100	1,692
Polpitiya	90	90	85	1,661
Broadlands	35	35	25	430
Kotmale	201	201	63	1,600
Victoria	225	216	71	1,802
Randenigala	114	102	44	708
Rantambe	50	50	36	497
Ukuwela	37	36	36	509
Bowatenna	40	40	26	252
Upper Kotmale	150	150	120	1,475
Nilambe	3	2	3	32
Samanalawewa	120	120	59	391
Kukule	75	75	78	1,864
Inginiyagala	11	5	3	70
Udawalawe	6	2	4	57
Puttalam Coal I	270	270	266	6,363
Puttalam Coal II	270	0	0	0
Puttalam Coal III	270	270	270	6,504
KPS Small GTs	64	16	0	0
KPS GT 7	115	0	0	0
KCCP	161	155	154	3,510
Sapugaskanda A	70	0	0	0
Sapugaskanda B	70	54	0	72
Uthura Janani	26	0	0	0
Barge CEB	60	45	3	72
CEB-Thulhiriya	10	8	0	0
CEB-Kolonnawa	20	14	0	0
CEB-Mathugama	20	13	0	0
ACE Matara	24	0	0	0
Sojitz Kelanitissa	163	0	0	0
West Coast	270	270	141	2,965
ACE Embilipitiya	93	0	0	0
Total	3,397	2,501	1,812	38,329

Plant availability is the availability recorded at 6 am on

July 23, 2022

Contribution to the Night Peak in MW

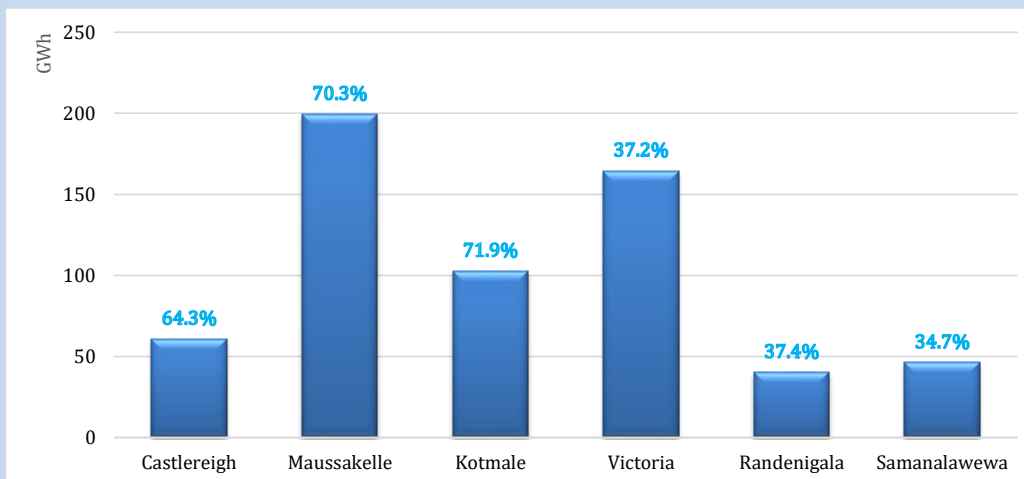
July 22, 2022



Night Peak*	1,796.0 MW
Day Peak	1,950.1 MW
Minimum Demand	1,225.4 MW

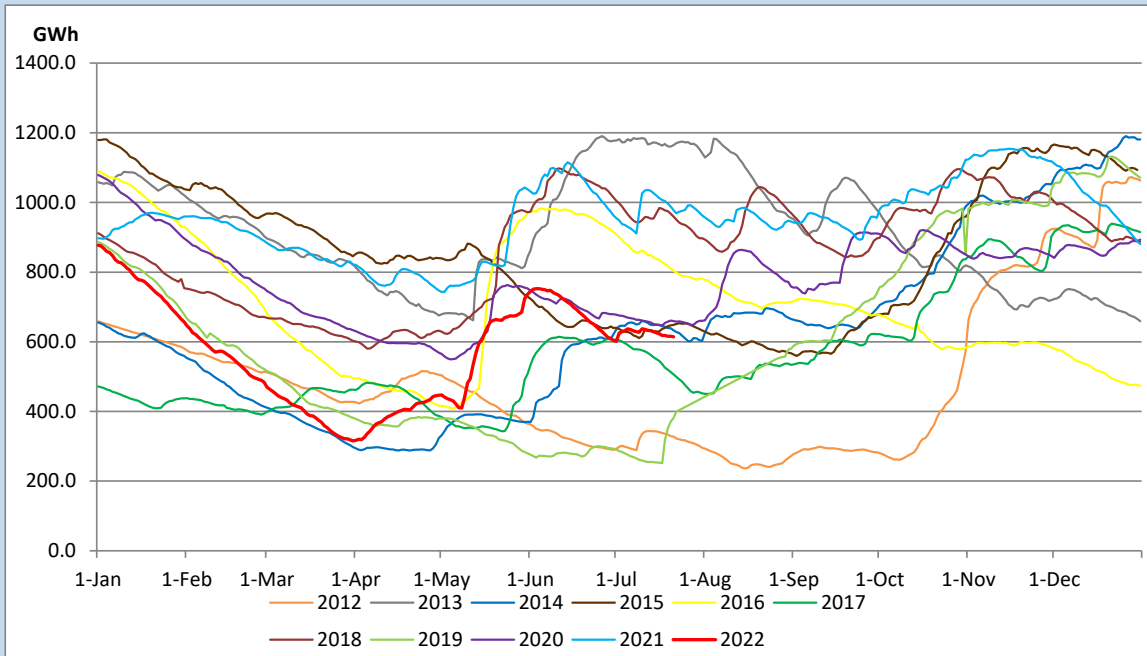
Above figures are excluding contribution from Roof Top Solar, 1MW solar, certain Wind plants and Mini Hydro plants

Reservoir Levels - as at 06.00 Hr on July 23, 2022

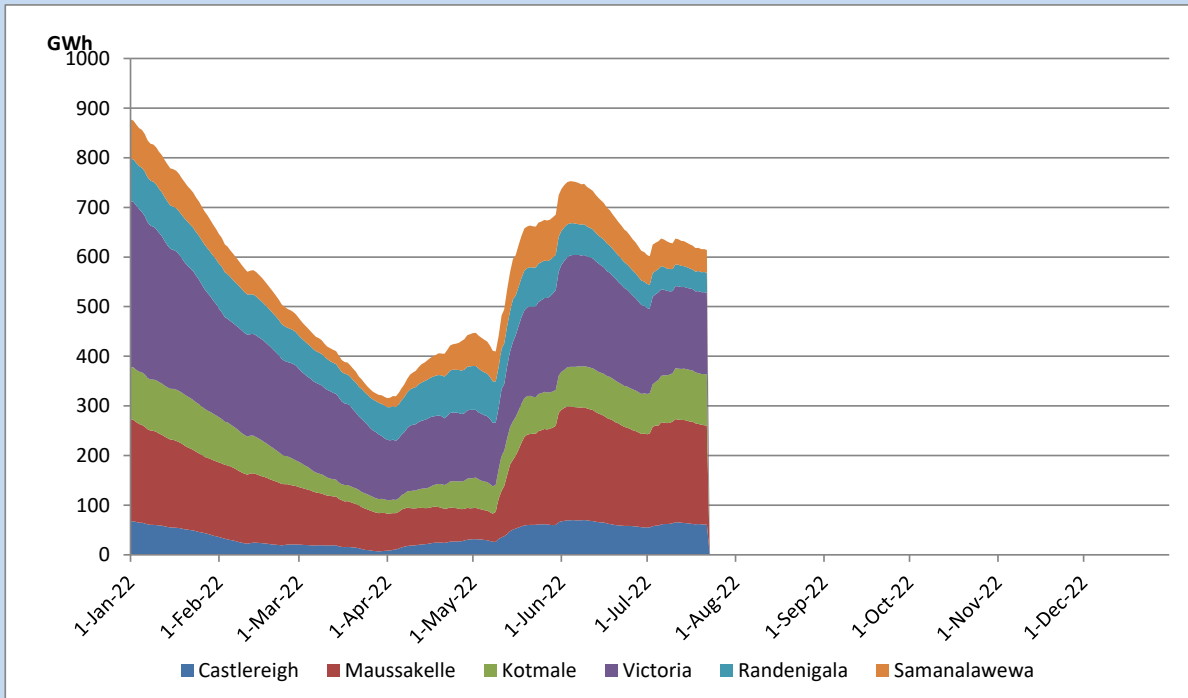


Total Reservoir Level	614.4 GWh
% of Total capacity	51.0%

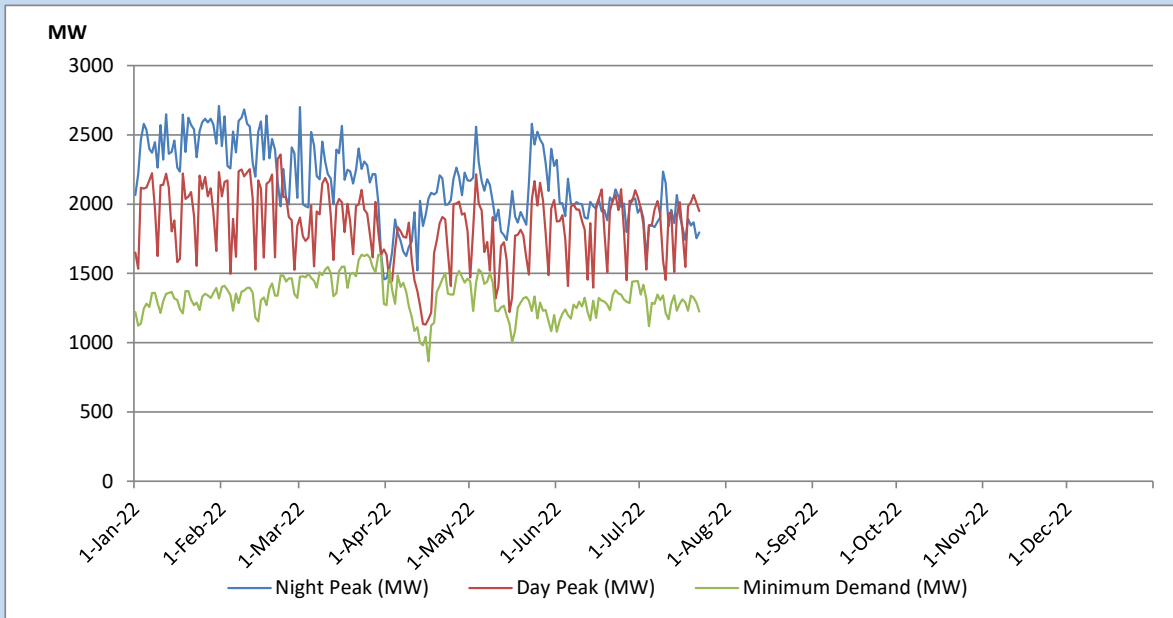
Comparison of Total Reservoir Storage Levels with Past Years



Variation of Major Hydro Reservoir Levels in the current year (GWh)



Variation of Demand during the current year

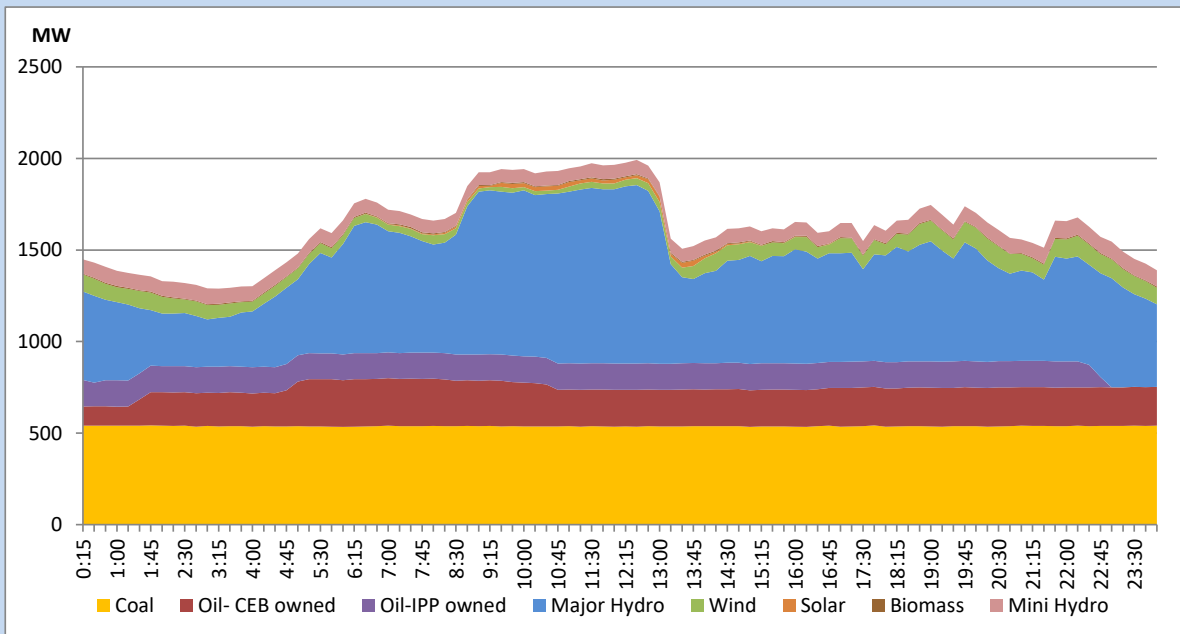


The above figures are excluding contribution from Roof Top Solar, 1MW solar, certain Wind plants and Mini Hydro plants

Daily Load Curve of the Previous day

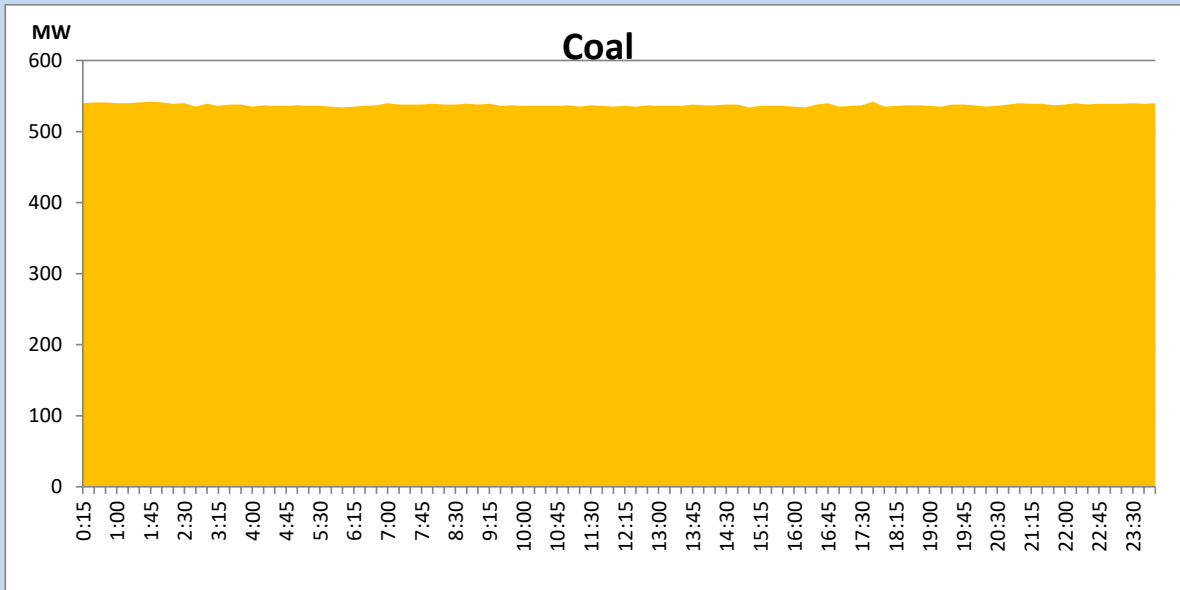
July 21, 2022

Solar and wind data is based on Telemetered Power Stations only



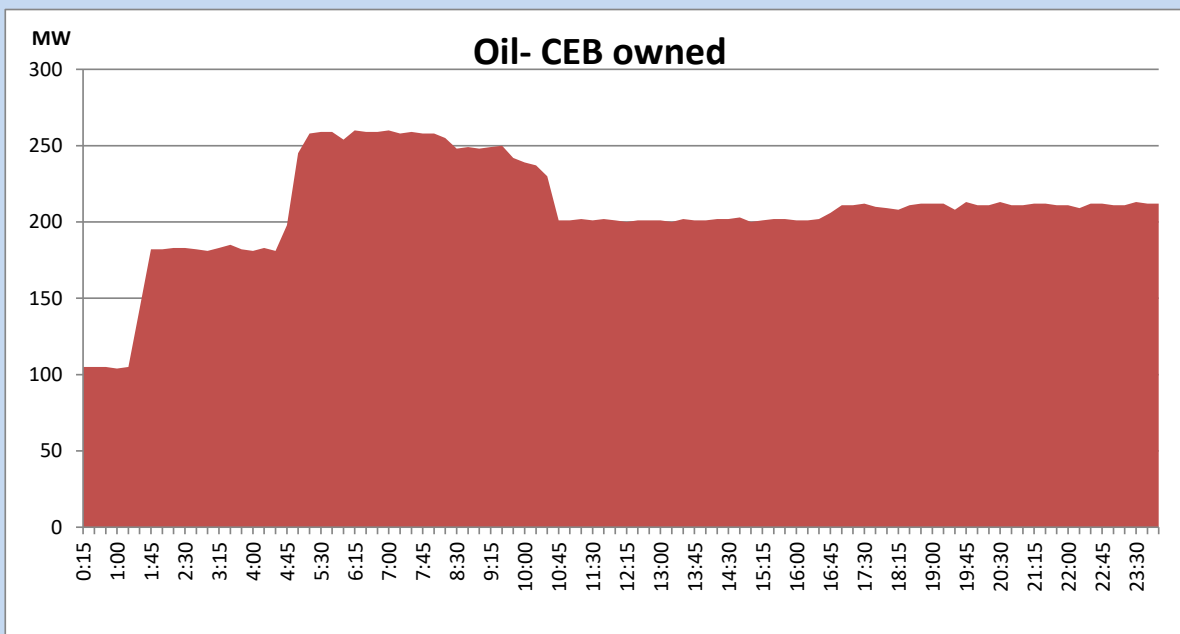
Coal Generation during the Previous day

July 21, 2022



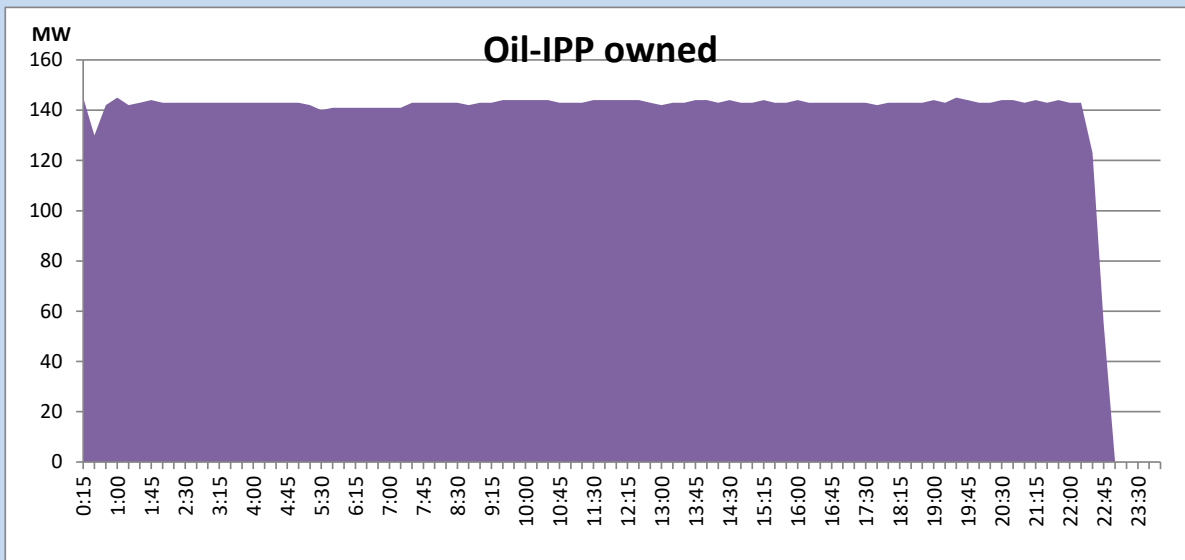
CEB Oil Plant Generation during the Previous day

July 21, 2022



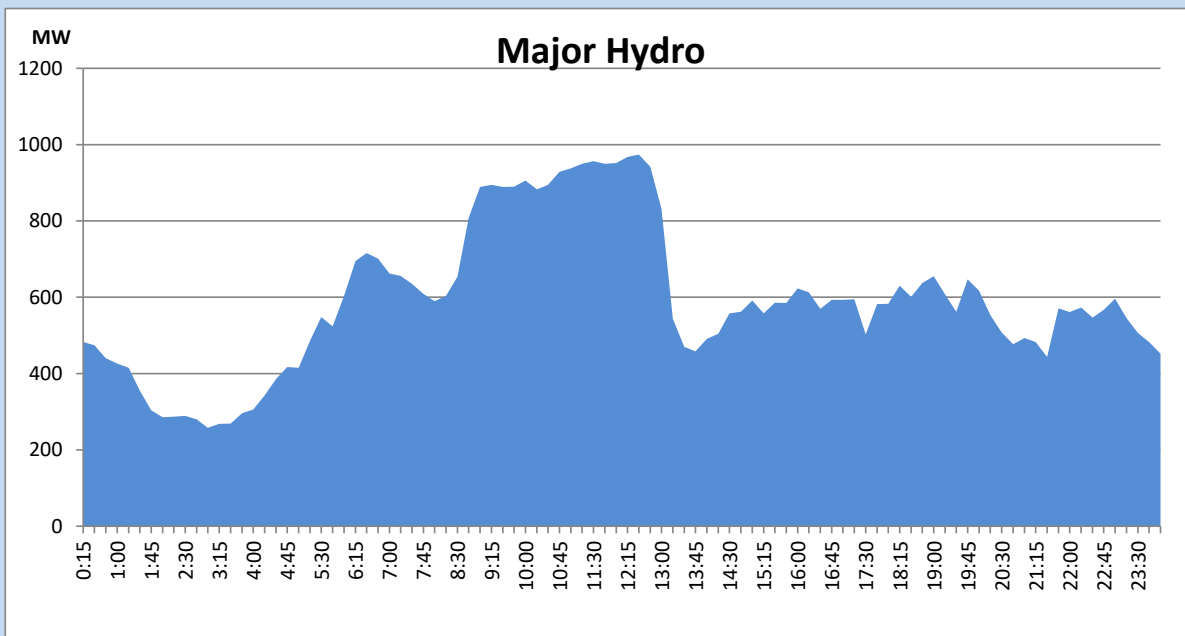
IPP Oil Plant Generation during the Previous day

July 21, 2022



Major Hydro Generation during the Previous day

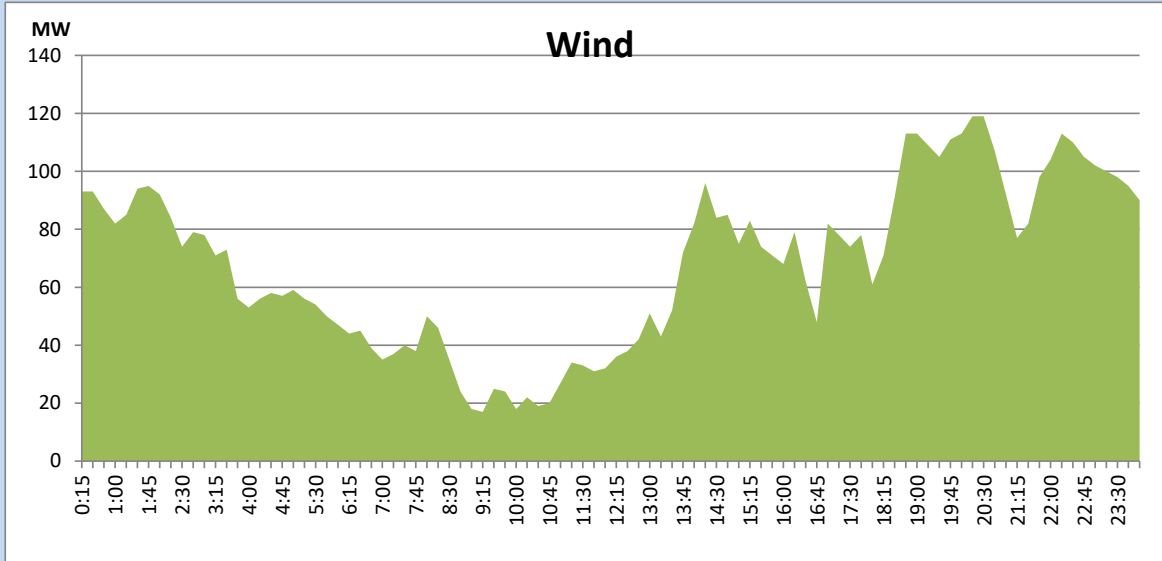
July 21, 2022



Wind Generation during the Previous day

July 21, 2022

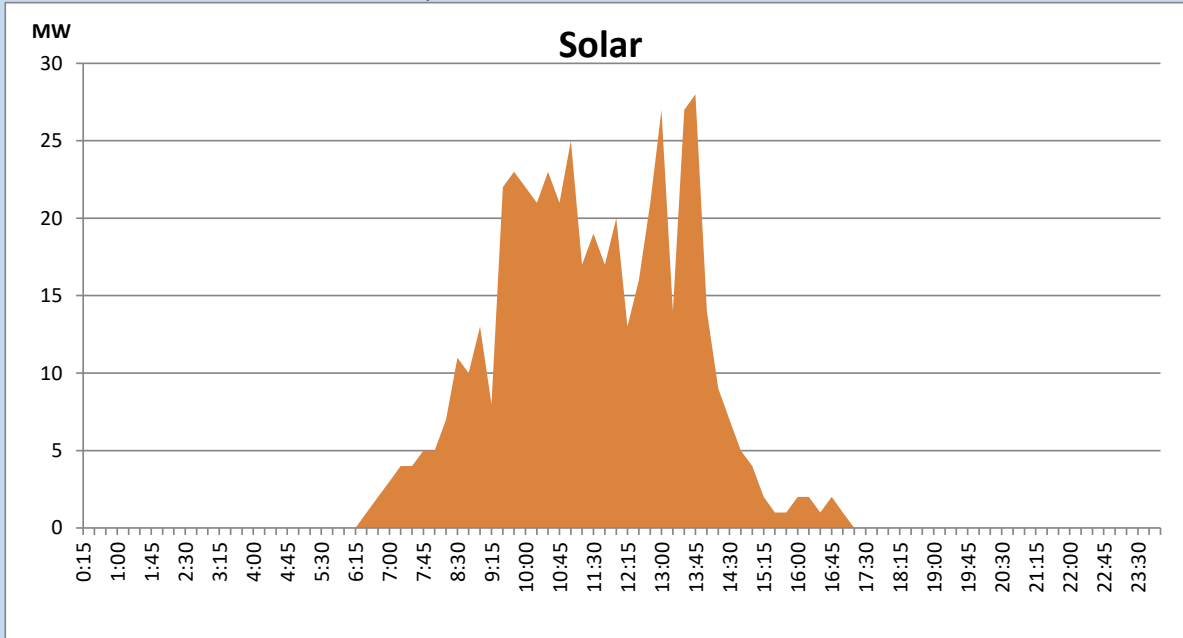
Based on Telemetered Power Stations only



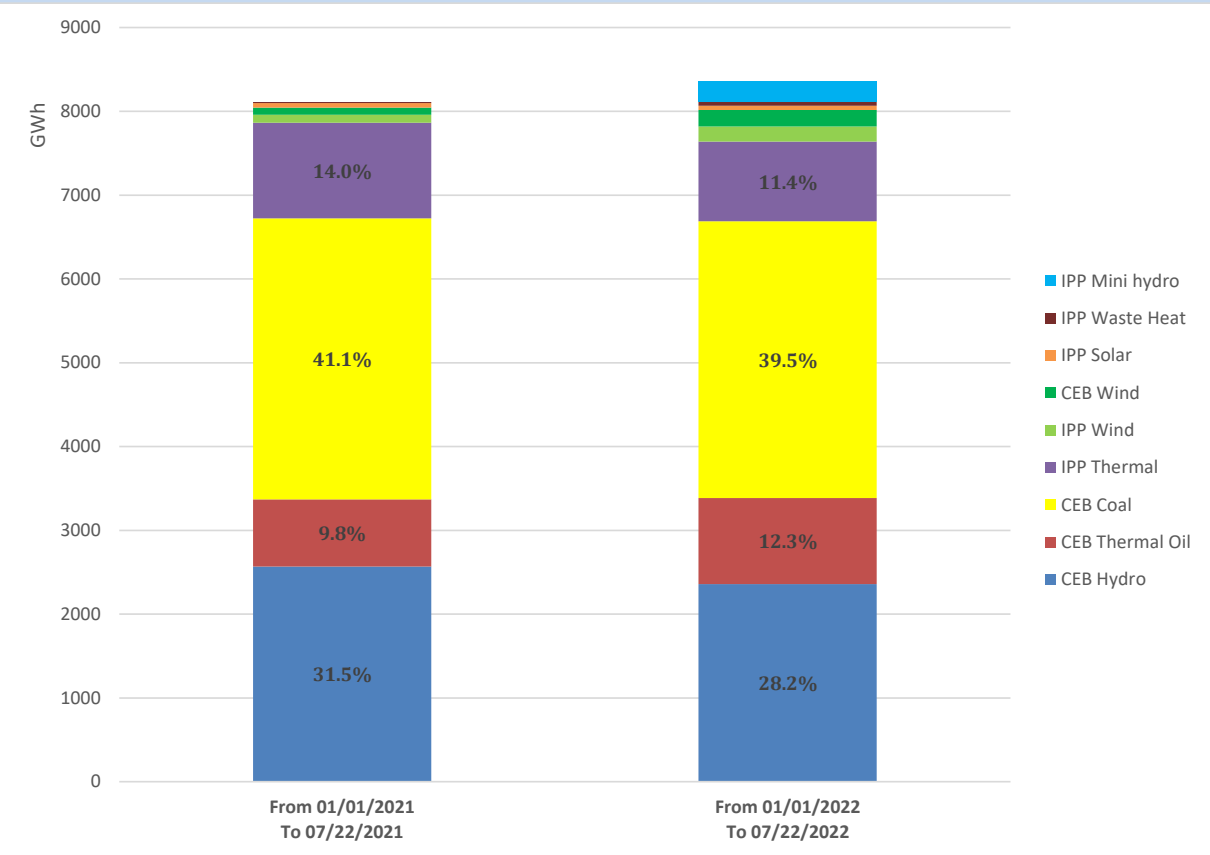
Solar Generation during the Previous day

July 21, 2022

Based on Telemetered Power Stations only



Cumulative Dispatch Comparison with Last Year



Thermal Plant Fuel types

Power Station	Primary Fuel
CEB Thermal	
Sapugaskanda 1	Heavy Fuel
Sapugaskanda 2	Heavy Fuel
Kelanitissa Small Gas Turbines	Auto Diesel
GT 7 - Kelanitissa	Auto Diesel
Kelanitissa CCY	Naphtha or Diesel
Lakvijaya 1	Coal
Lakvijaya 2	Coal
Lakvijaya 3	Coal
Uthuru Janani	Heavy Fuel
Barge CEB	Heavy Fuel

Power Station	Primary Fuel
Private Thermal	
Sojitz - Kelanitissa	Auto Diesel
West Coast	Auto Diesel / Heavy Fuel
ACE Matara	Heavy Fuel
ACE Embilipitiya	Heavy Fuel

Major Incidents during the day -as reported by CEB morning of

July 23, 2022

- 1) Rotational manual load shedding was carried out from 05:30 hrs to 08:30 hrs and 13:00 hrs to 22:00 hrs.
- 2) Kukule spilling stopped at 14:15hrs.
- 3) N/Chillaw - Veyangoda cct 02 tripped and A/R from both ends at 20:15hrs, due to the operation of distance protection.