

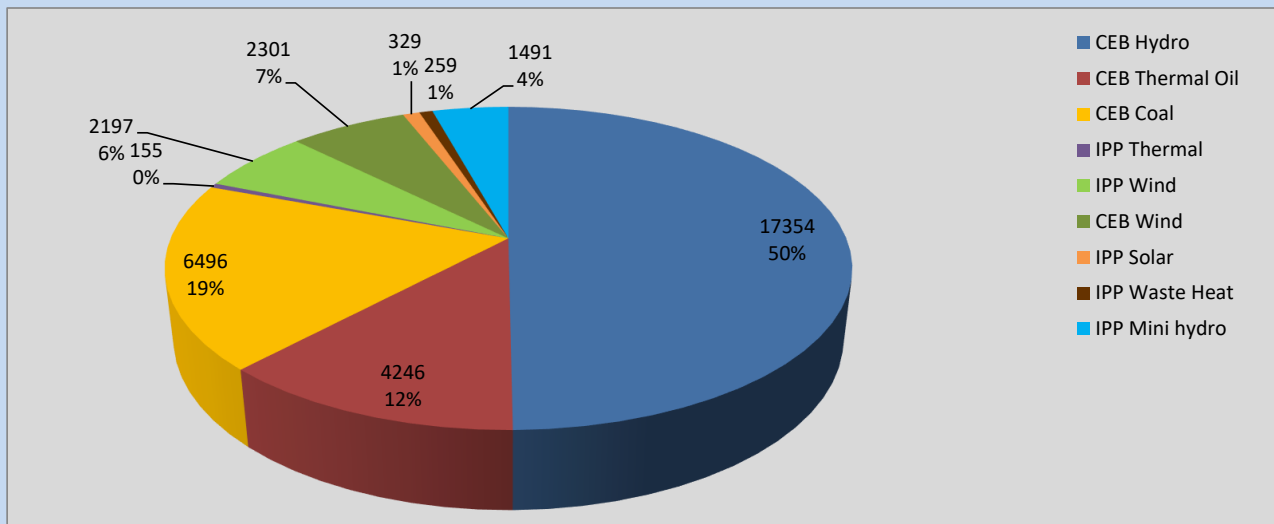
Generation and Reservoirs Statistics

August 21, 2022



PUBLIC UTILITIES COMMISSION OF SRI LANKA

Daily Generation Mix in MWh



Total Generation 34,828 MWh

Note: Above data is excluding contribution from Roof Top Solar, 1MW Solar and certain Mini Hydro plants

Cumulative Dispatch

Note: Following data is Excluding contribution from Roof Top Solar, 1MW solar and Mini Hydro plants

For Current Month

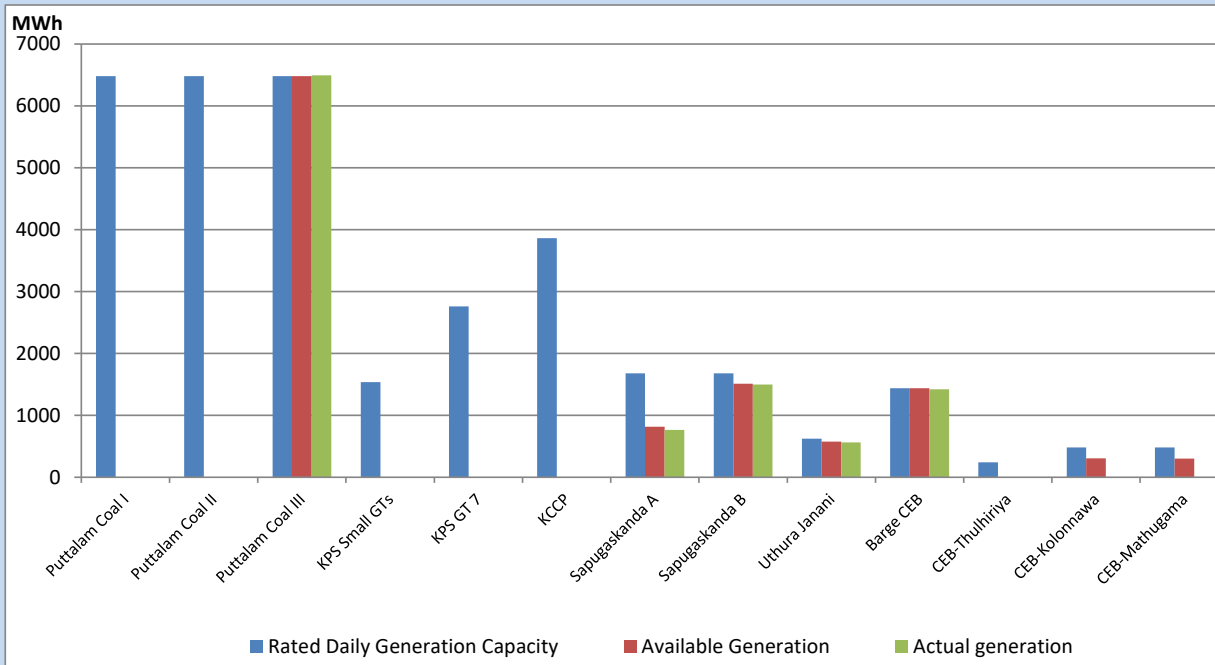
Category	Dispatch (GWh)	
CEB Hydro	427.38	52.49%
CEB Thermal Oil	35.59	4.37%
CEB Coal	200.96	24.68%
IPP Thermal	35.50	4.36%
SPP Wind	36.74	4.51%
CEB Wind	35.27	4.33%
SPP Solar	5.88	0.72%
SPP Solid Waste	3.16	0.39%
Mini Hydro	33.74	4.14%
Total	814.22	

For Current Year

Category	Dispatch (GWh)	
CEB Hydro	2,925.5	30.78%
CEB Thermal Oil	1,091.0	11.48%
CEB Coal	3,620.6	38.10%
IPP Thermal	1,007.9	10.61%
SPP Wind	220.7	2.32%
CEB Wind	236.5	2.49%
SPP Solar	59.8	0.63%
SPP Solid Waste	47.2	0.50%
Mini Hydro	294.7	3.10%
Total	9,503.8	

CEB owned Thermal Plant Dispatch

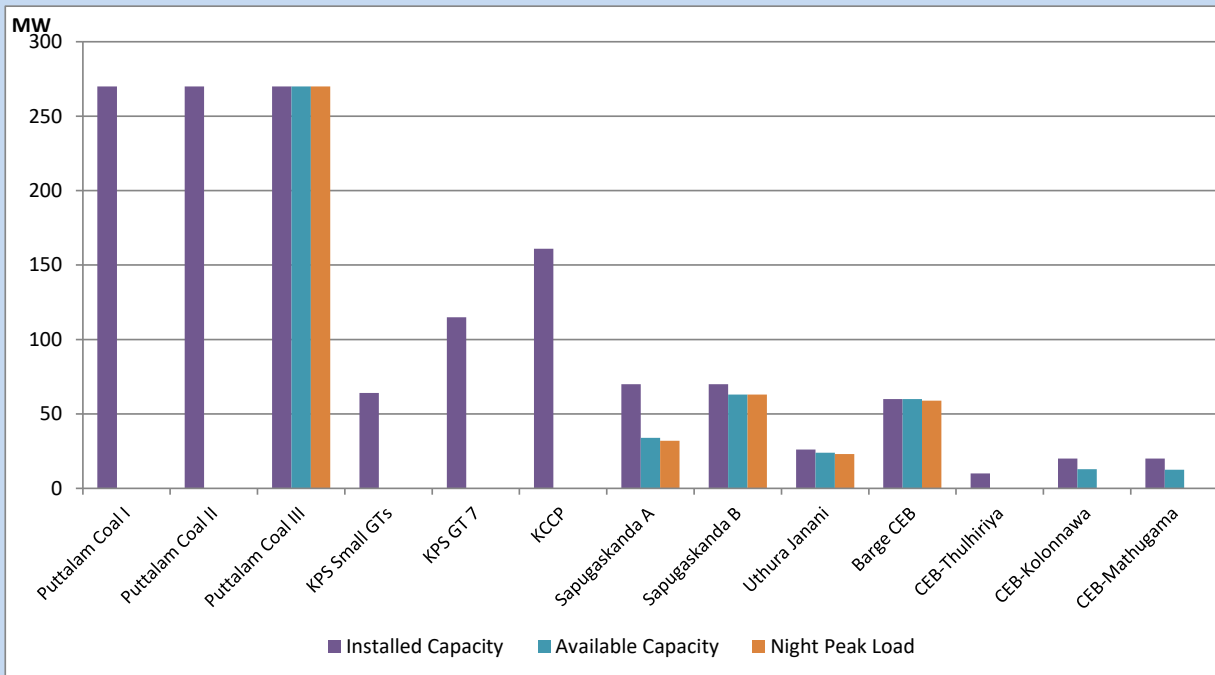
August 21, 2022



Available Generation is estimated based on plant availability at 6.00am on

August 22, 2022

CEB owned Thermal Plant Loading at the Night Peak



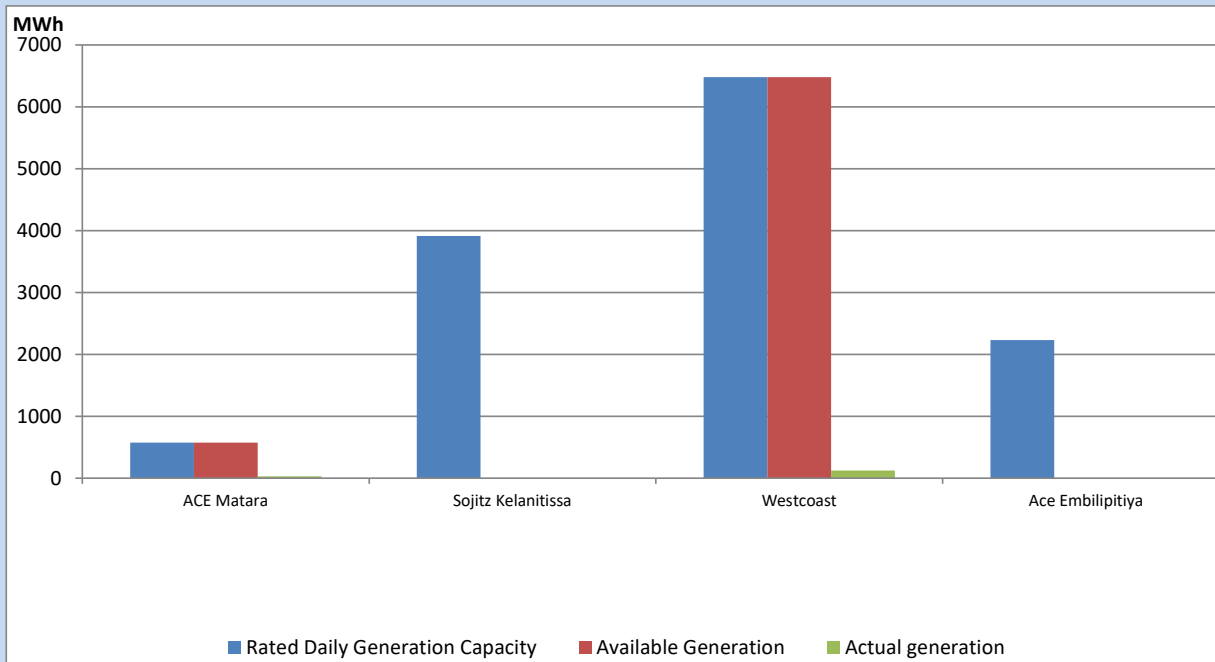
Note- Plant availability is recorded at 6.00 am on

August 22, 2022

IPP owned Thermal Plant Dispatch

August 21, 2022

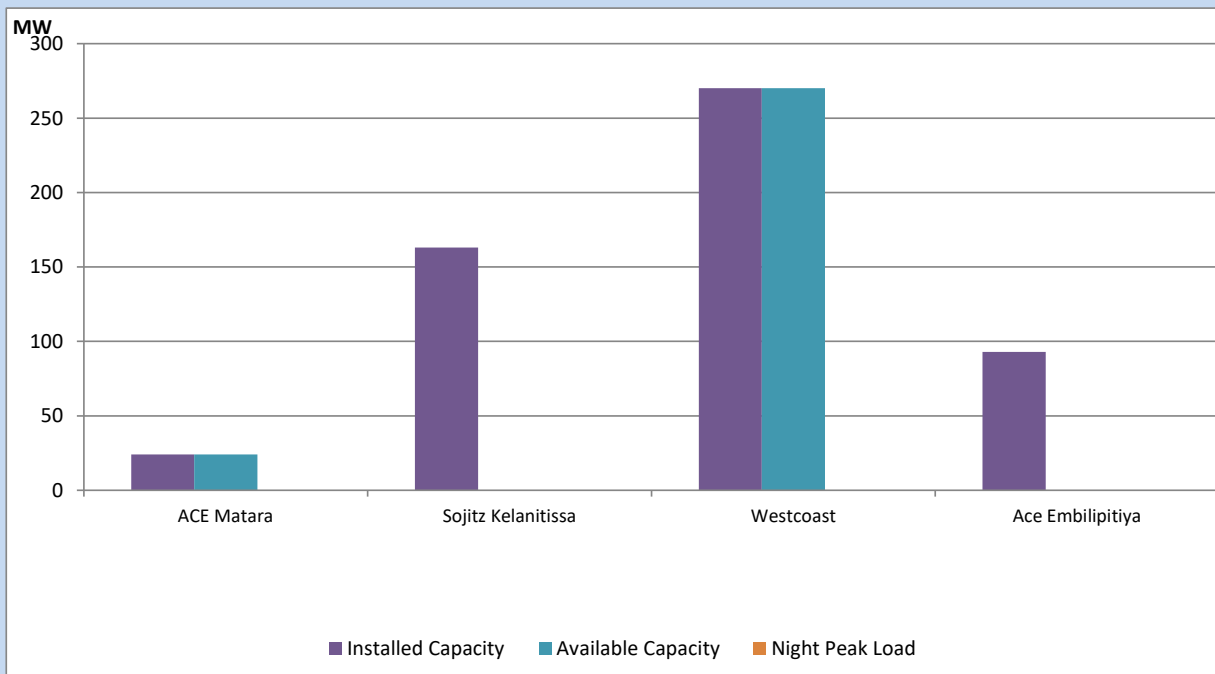
Asia Power, V Power Pallekale, Vpower Galle, V Power Horana, Vpower Hambantota, Vpower Valachchena and Altaqa Mahiyanganaya are not available due to expiration of PPAs



Available Generation is estimated based on plant availability at 6.00am on

August 22, 2022

IPP owned Thermal Plant Loading at the Night Peak

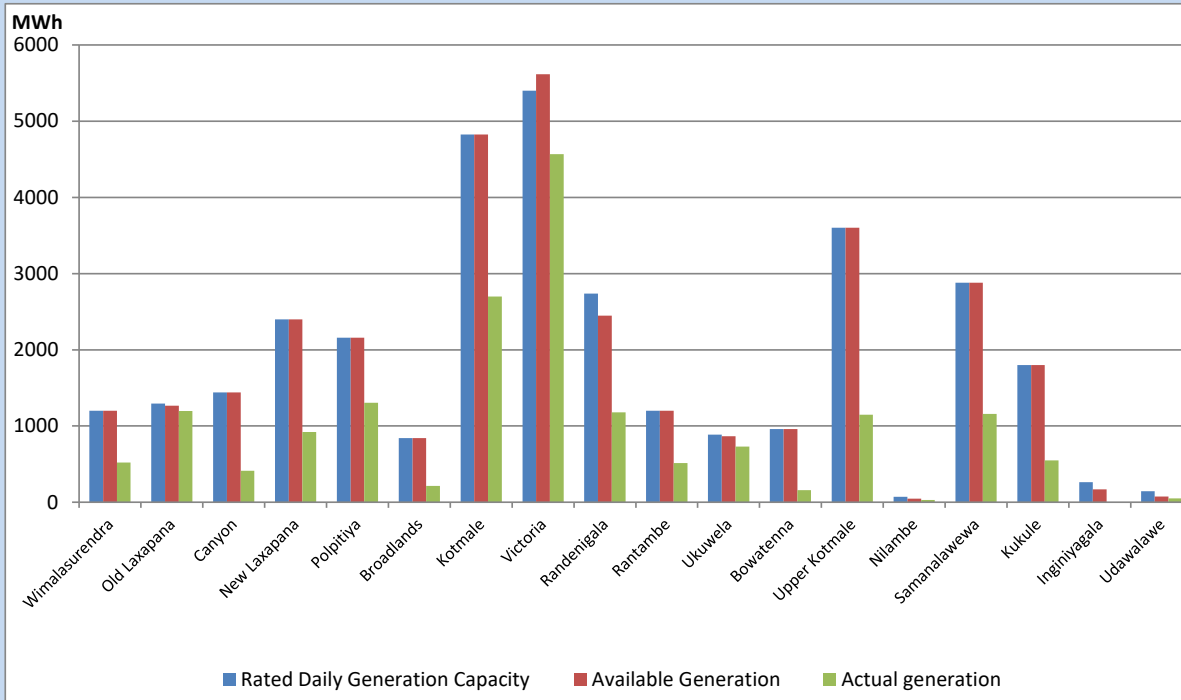


Note- Plant availability is recorded at 6.00 am on

August 22, 2022

Major Hydro Plant Dispatch

August 21, 2022

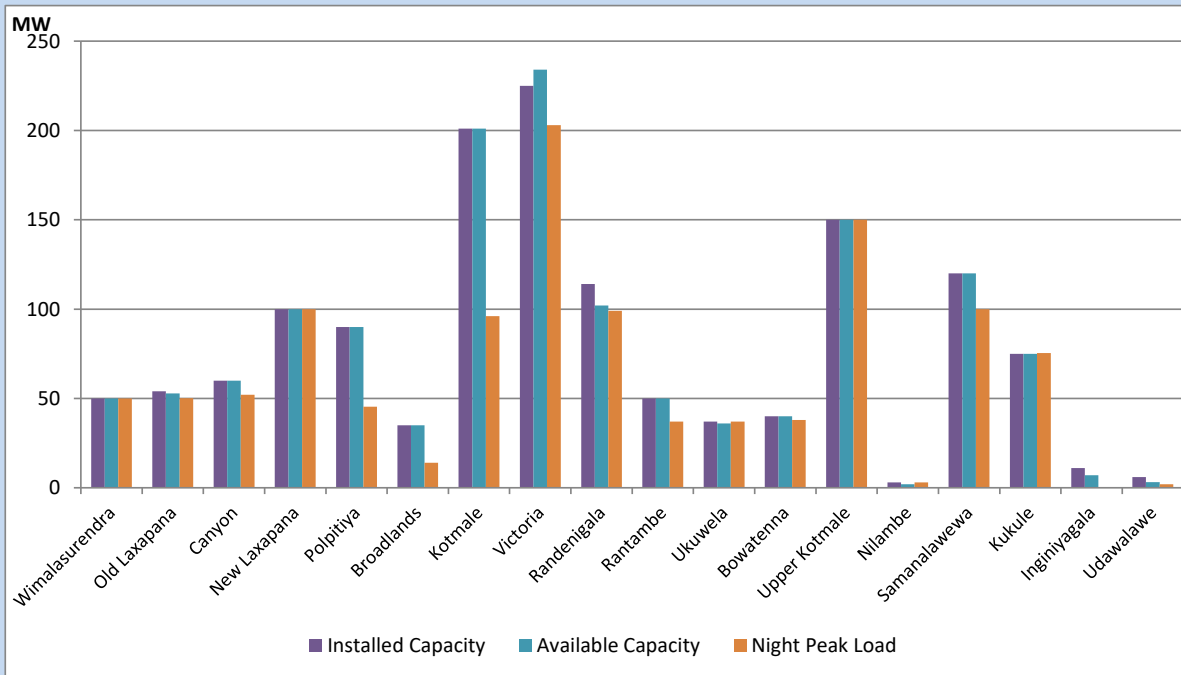


Available Generation is estimated based on plant availability at 6.00am on August 22, 2022
 Broadlands power plant is operating in the Commissioning Stage

August 22, 2022

Major Hydro Plant Loading at Night Peak

August 21, 2022



Note- Plant availability is recorded at 6.00 am on August 22, 2022
 Broadlands power plant is operating in the Commissioning Stage

Summary of Major Plant performance

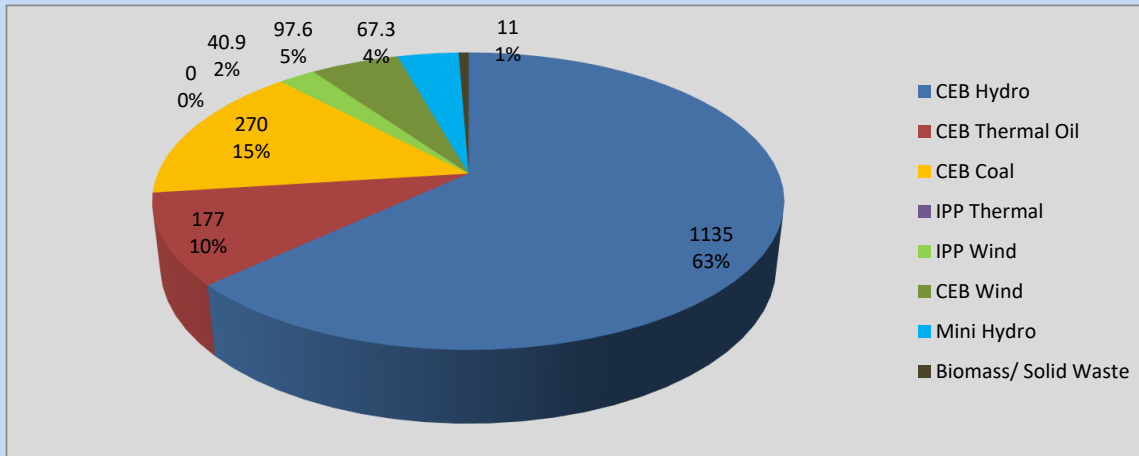
Plant	Installed Capacity	Plant Availability	Night peak Load	Plant Dispatch
	(MW)	(MW)	(MW)	(MWh)
Wimalasurendra	50	50	50	522
Old Laxapana	54	53	50	1,198
Canyon	60	60	52	413
New Laxapana	100	100	100	920
Polpitiya	90	90	45	1,304
Broadlands	35	35	14	215
Kotmale	201	201	96	2,700
Victoria	225	234	203	4,567
Randenigala	114	102	99	1,178
Rantambe	50	50	37	515
Ukuwela	37	36	37	729
Bowatenna	40	40	38	158
Upper Kotmale	150	150	150	1,147
Nilambe	3	2	3	30
Samanalawewa	120	120	100	1,160
Kukule	75	75	75	549
Inginiyagala	11	7	0	0
Udawalawe	6	3	2	49
Puttalam Coal I	270	0	0	0
Puttalam Coal II	270	0	0	0
Puttalam Coal III	270	270	270	6,496
KPS Small GTs	64	0	0	0
KPS GT 7	115	0	0	0
KCCP	161	0	0	0
Sapugaskanda A	70	34	32	765
Sapugaskanda B	70	63	63	1,499
Uthura Janani	26	24	23	562
Barge CEB	60	60	59	1,420
CEB-Thulhiriya	10	0	0	0
CEB-Kolonnawa	20	13	0	0
CEB-Mathugama	20	13	0	0
ACE Matara	24	24	0	30
Sojitz Kelanitissa	163	0	0	0
West Coast	270	270	0	125
ACE Embilipitiya	93	0	0	0
Total	3,397	2,178	1,816	34,828

Plant availability is the availability recorded at 6 am on

August 22, 2022

Contribution to the Night Peak in MW

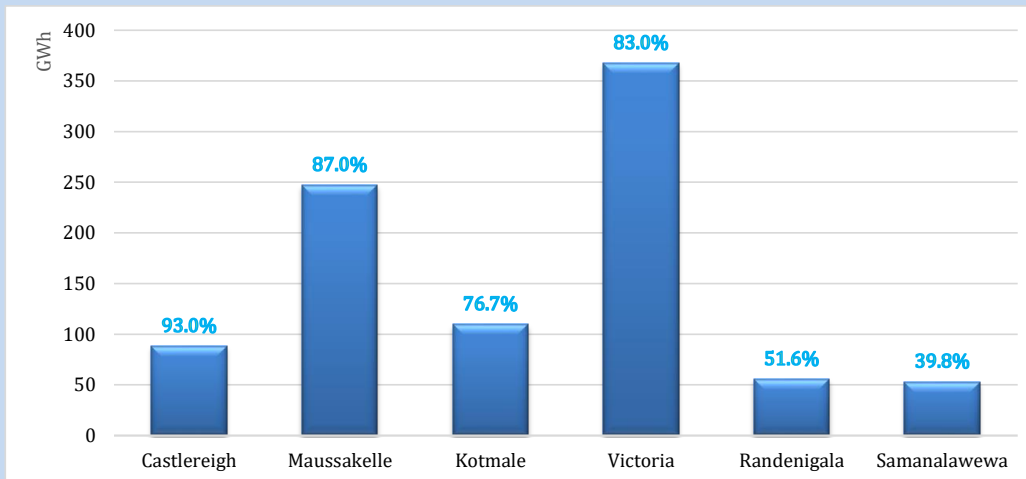
August 21, 2022



Night Peak*	1,798.8 MW
Day Peak	1,445.8 MW
Minimum Demand	1,273.0 MW

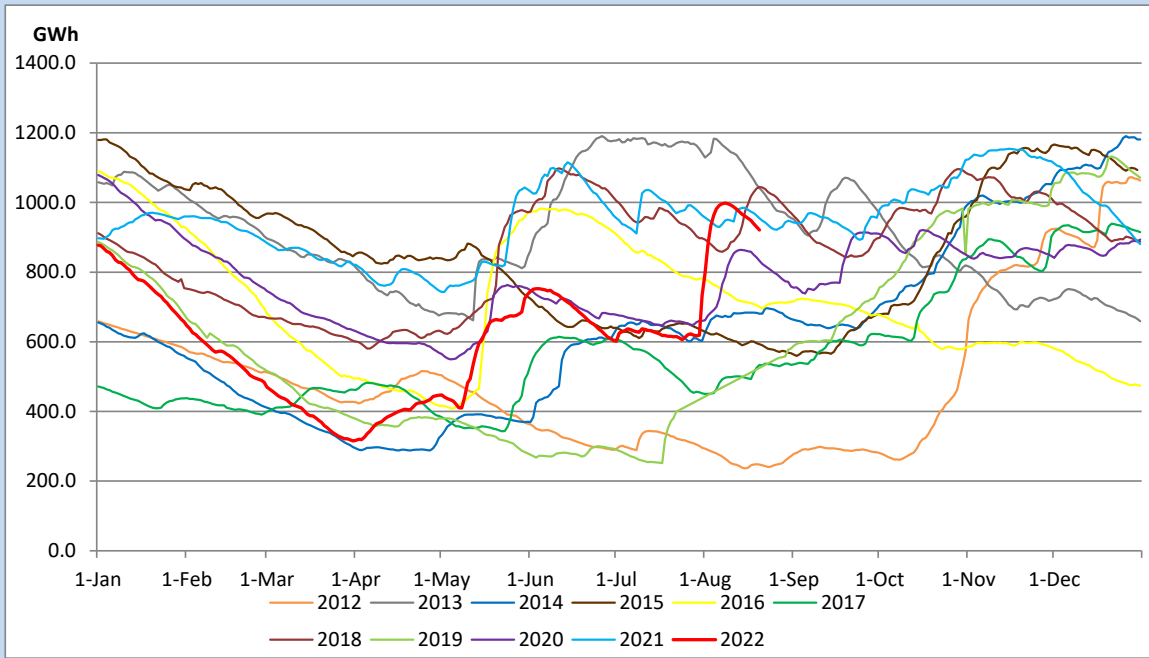
Above figures are excluding contribution from Roof Top Solar, 1MW solar, certain Wind plants and Mini Hydro plants

Reservoir Levels - as at 06.00 Hr on August 22, 2022

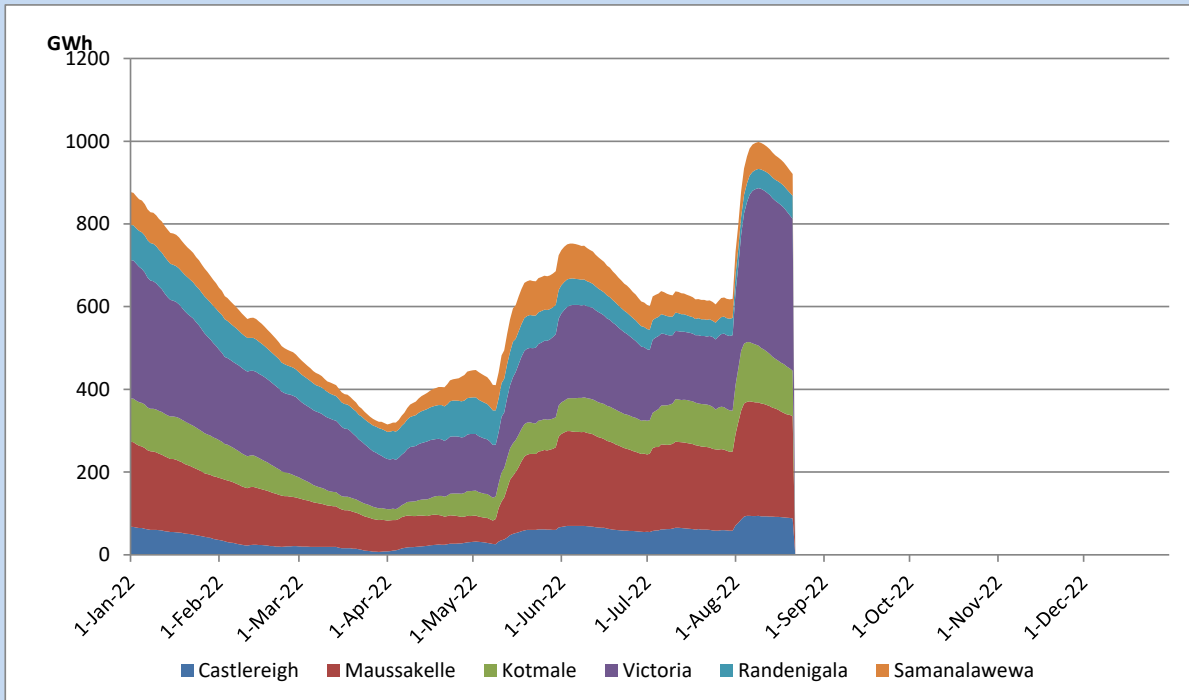


Total Reservoir Level	920.9 GWh
% of Total capacity	76.4%

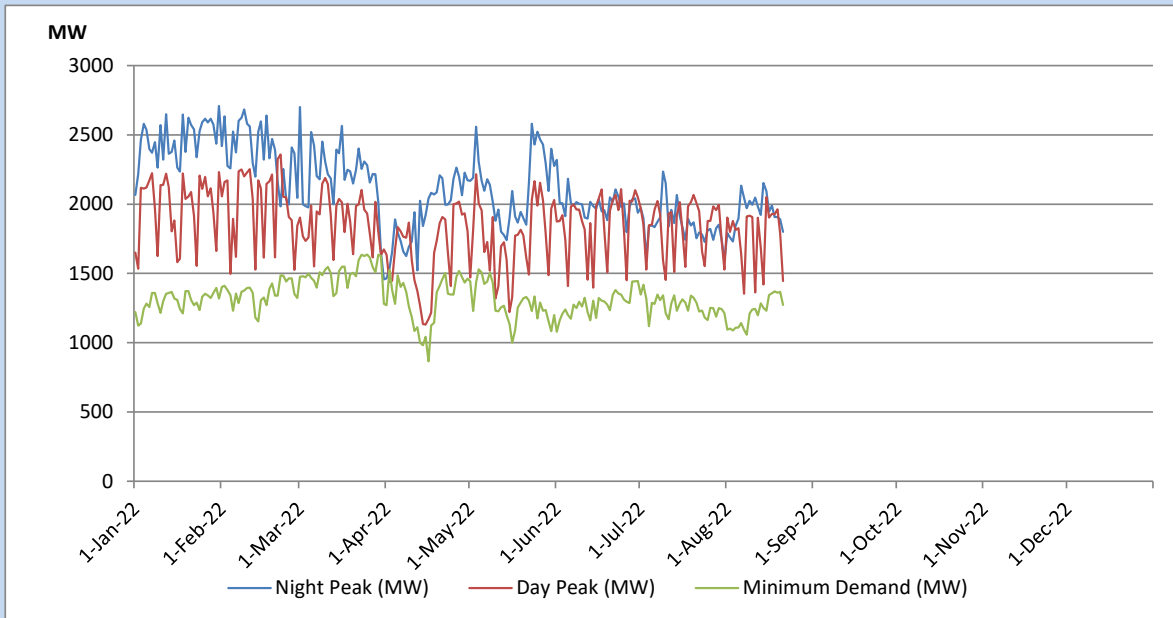
Comparison of Total Reservoir Storage Levels with Past Years



Variation of Major Hydro Reservoir Levels in the current year (GWh)



Variation of Demand during the current year

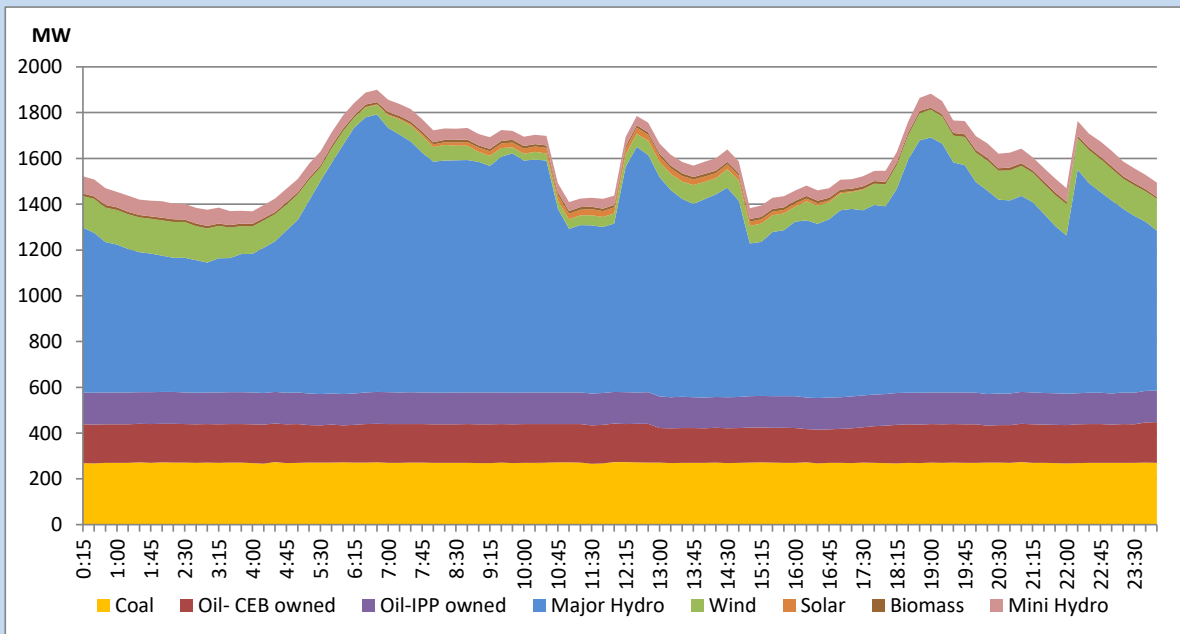


The above figures are excluding contribution from Roof Top Solar, 1MW solar, certain Wind plants and Mini Hydro plants

Daily Load Curve of the Previous day

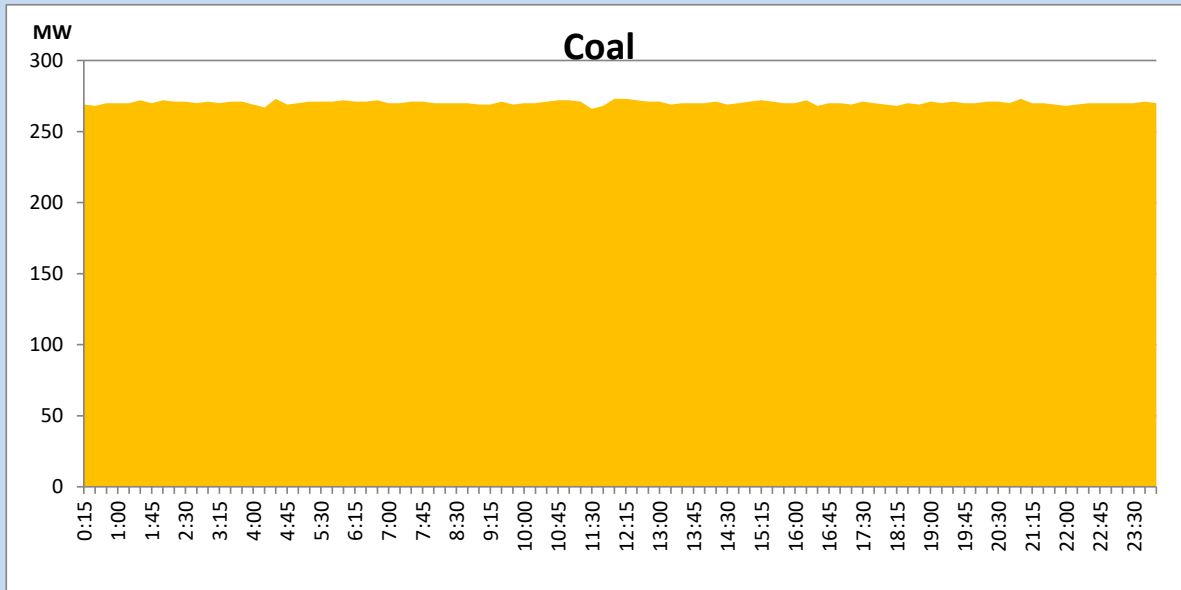
August 20, 2022

Solar and wind data is based on Telemetered Power Stations only



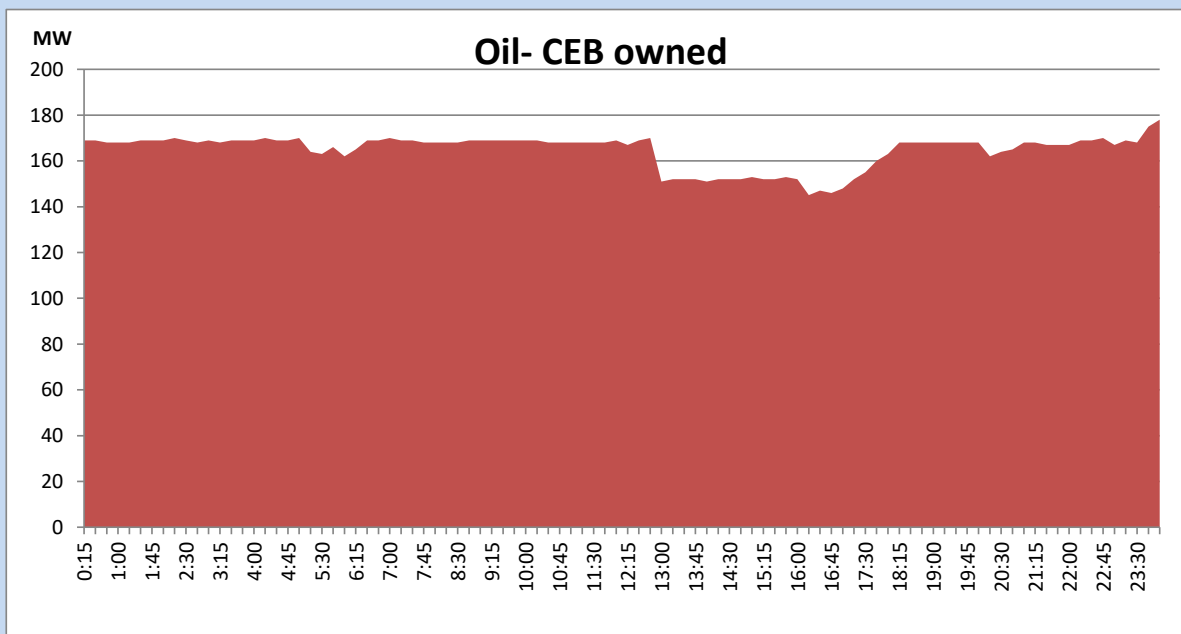
Coal Generation during the Previous day

August 20, 2022



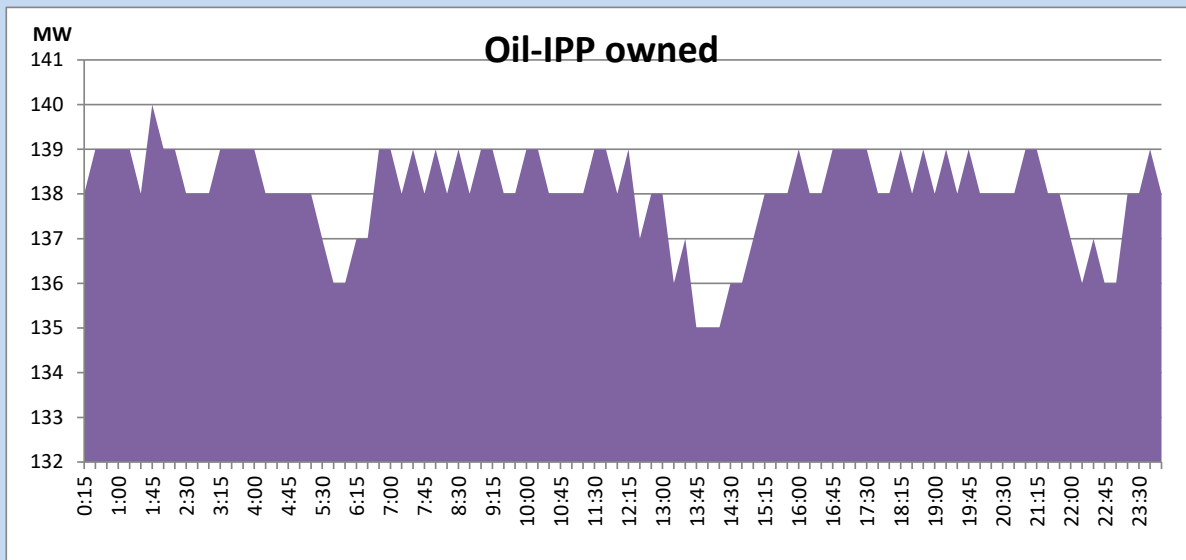
CEB Oil Plant Generation during the Previous day

August 20, 2022



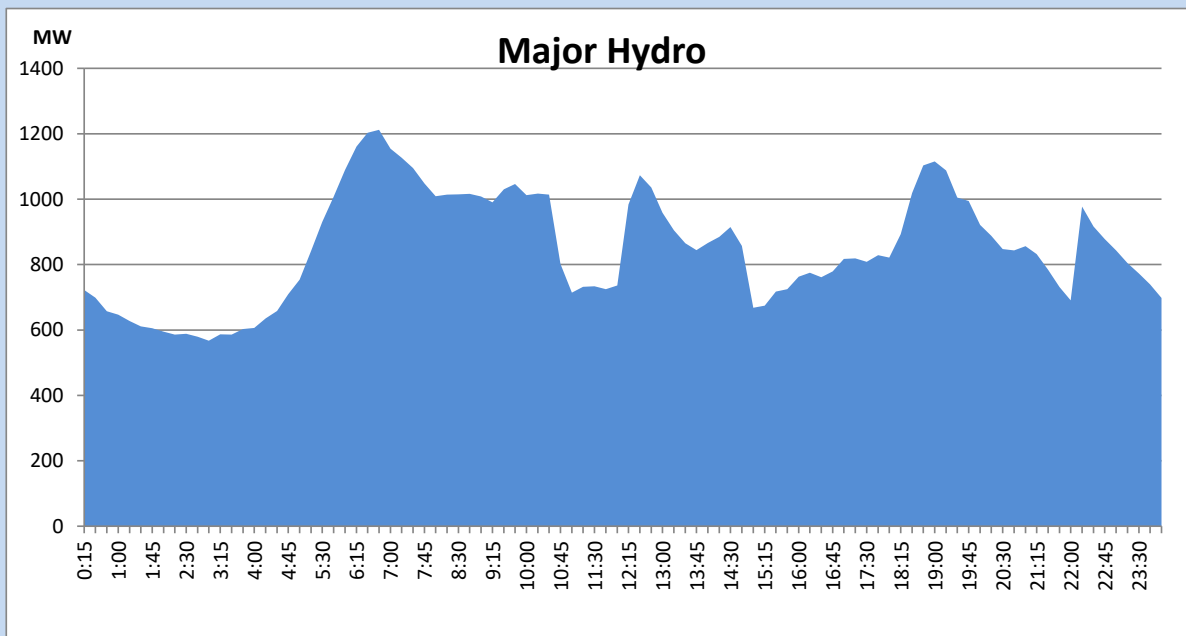
IPP Oil Plant Generation during the Previous day

August 20, 2022



Major Hydro Generation during the Previous day

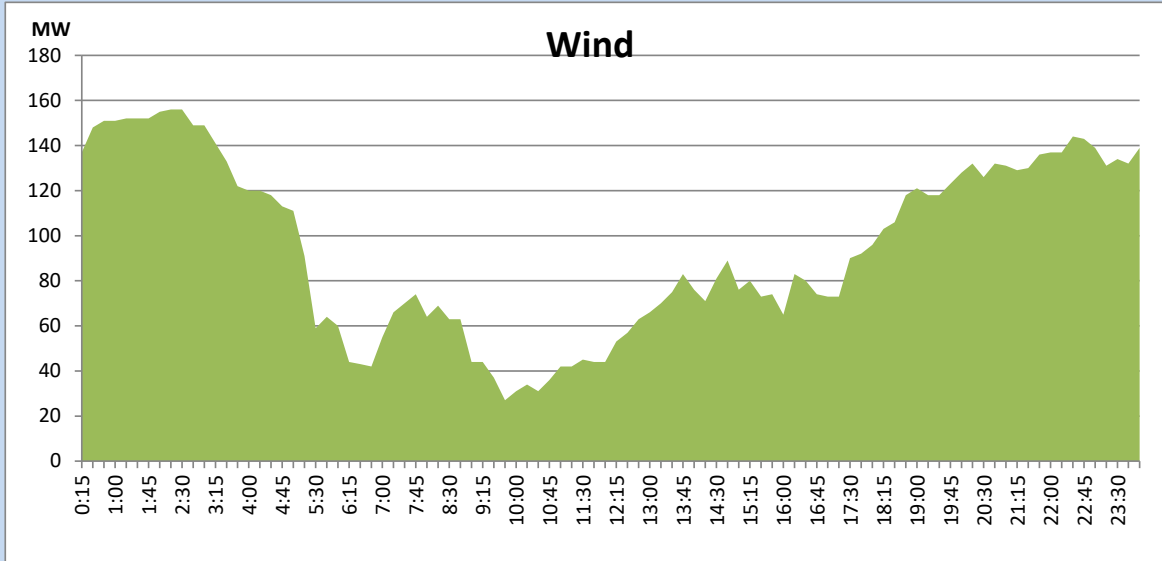
August 20, 2022



Wind Generation during the Previous day

August 20, 2022

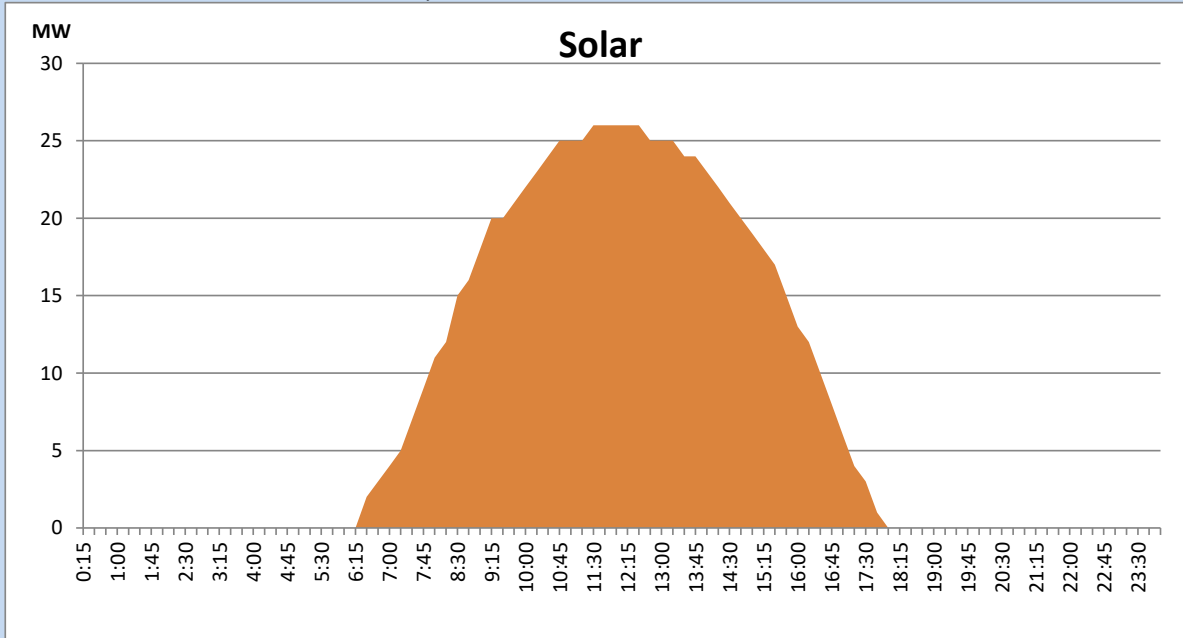
Based on Telemetered Power Stations only



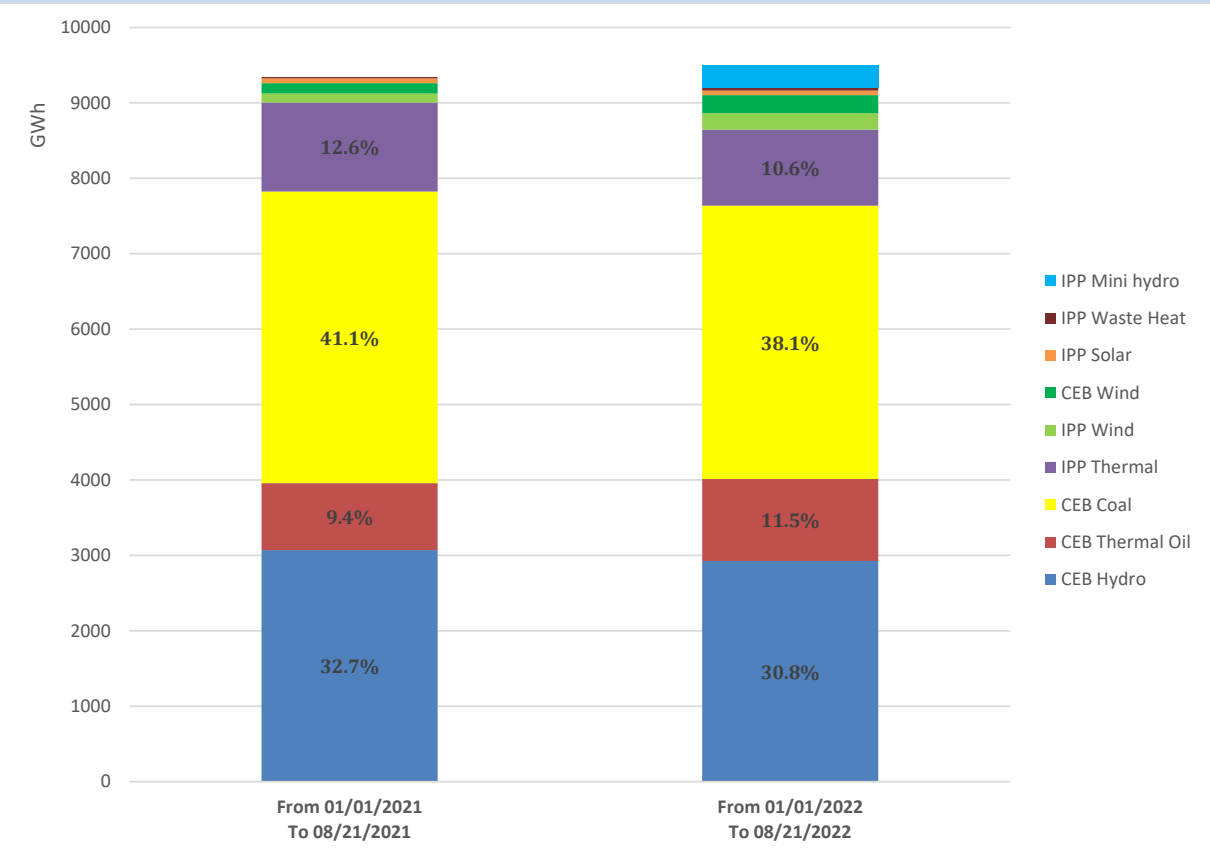
Solar Generation during the Previous day

August 20, 2022

Based on Telemetered Power Stations only



Cumulative Dispatch Comparison with Last Year



Thermal Plant Fuel types

Power Station	Primary Fuel
CEB Thermal	
Sapugaskanda 1	Heavy Fuel
Sapugaskanda 2	Heavy Fuel
Kelanitissa Small Gas Turbines	Auto Diesel
GT 7 - Kelanitissa	Auto Diesel
Kelanitissa CCY	Naphtha or Diesel
Lakvijaya 1	Coal
Lakvijaya 2	Coal
Lakvijaya 3	Coal
Uthuru Janani	Heavy Fuel
Barge CEB	Heavy Fuel

Power Station	Primary Fuel
Private Thermal	
Sojitz - Kelanitissa	Auto Diesel
West Coast	Auto Diesel / Heavy Fuel
ACE Matara	Heavy Fuel
ACE Embilipitiya	Heavy Fuel

Major Incidents during the day -as reported by CEB morning of

August 22, 2022

- 1) Rotational manual load shedding was carried out from 10:30 hrs to 12:10 hrs and 14:40 hrs to 22:00 hrs.
- 2) New Anuradhapura – Puttalam cct 02 which was tripped from both ends at 07:44hrs on 20-08-2022, restored at 16:38 hrs.
- 3) Padukka-New polpitiya cct-02 tripped and A/R at 02:07 hrs (on 22/08/2022) due to operation of differential protection.