

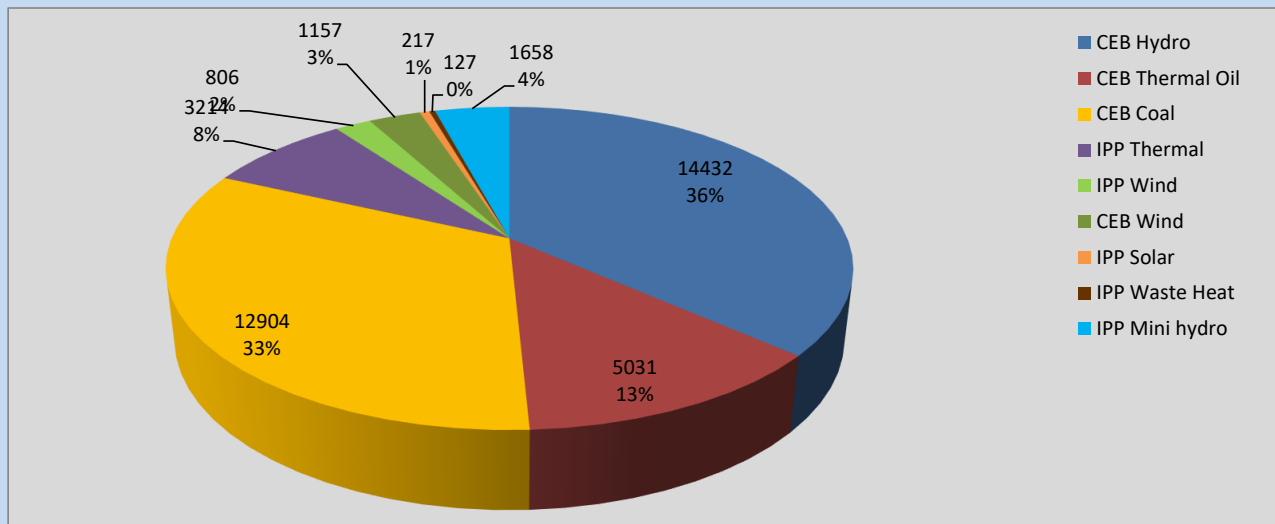
Generation and Reservoirs Statistics

July 21, 2022



PUBLIC UTILITIES COMMISSION OF SRI LANKA

Daily Generation Mix in MWh



Total Generation **39,546 MWh**

Note: Above data is excluding contribution from Roof Top Solar, 1MW Solar and certain Mini Hydro plants

Cumulative Dispatch

Note: Following data is Excluding contribution from Roof Top Solar, 1MW solar and Mini Hydro plants

For Current Month

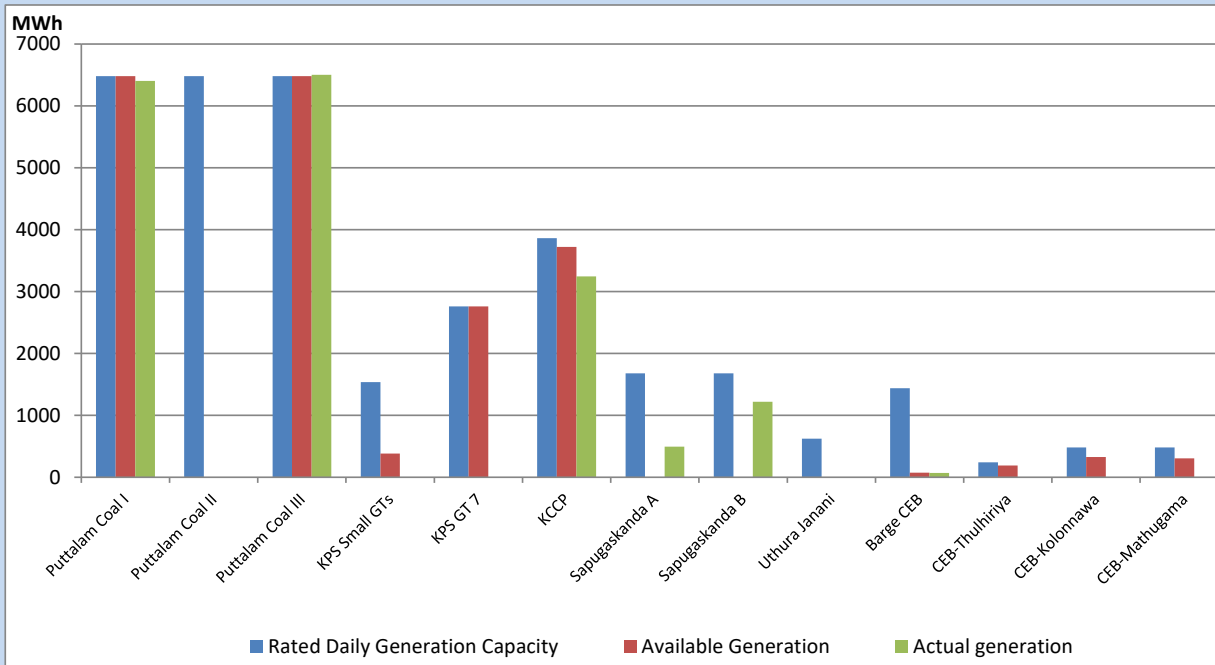
Category	Dispatch (GWh)	Percentage
CEB Hydro	291.96	35.89%
CEB Thermal Oil	82.15	10.10%
CEB Coal	263.14	32.34%
IPP Thermal	75.11	9.23%
SPP Wind	28.82	3.54%
CEB Wind	29.99	3.69%
SPP Solar	5.66	0.70%
SPP Solid Waste	4.62	0.57%
Mini Hydro	32.14	3.95%
Total	813.59	

For Current Year

Category	Dispatch (GWh)	Percentage
CEB Hydro	2,343.3	28.16%
CEB Thermal Oil	1,022.3	12.29%
CEB Coal	3,291.4	39.56%
IPP Thermal	946.7	11.38%
SPP Wind	178.7	2.15%
CEB Wind	195.9	2.35%
SPP Solar	52.1	0.63%
SPP Solid Waste	43.1	0.52%
Mini Hydro	247.7	2.98%
Total	8,321.0	

CEB owned Thermal Plant Dispatch

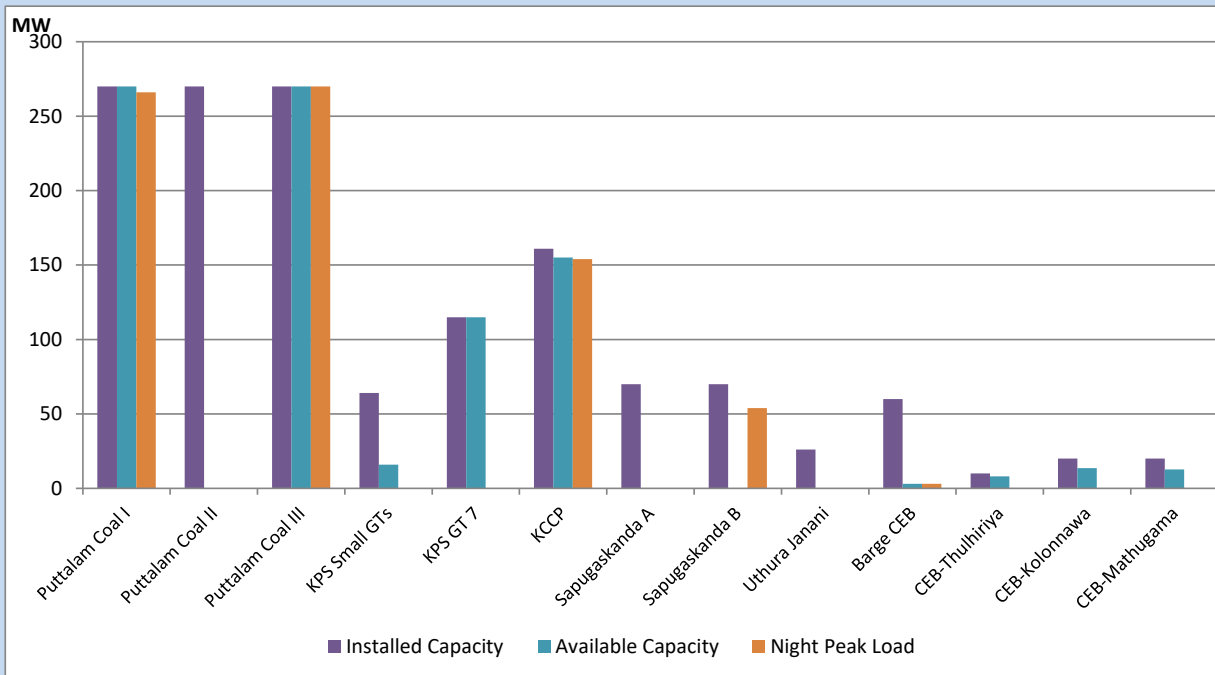
July 21, 2022



Available Generation is estimated based on plant availability at 6.00am on

July 22, 2022

CEB owned Thermal Plant Loading at the Night Peak



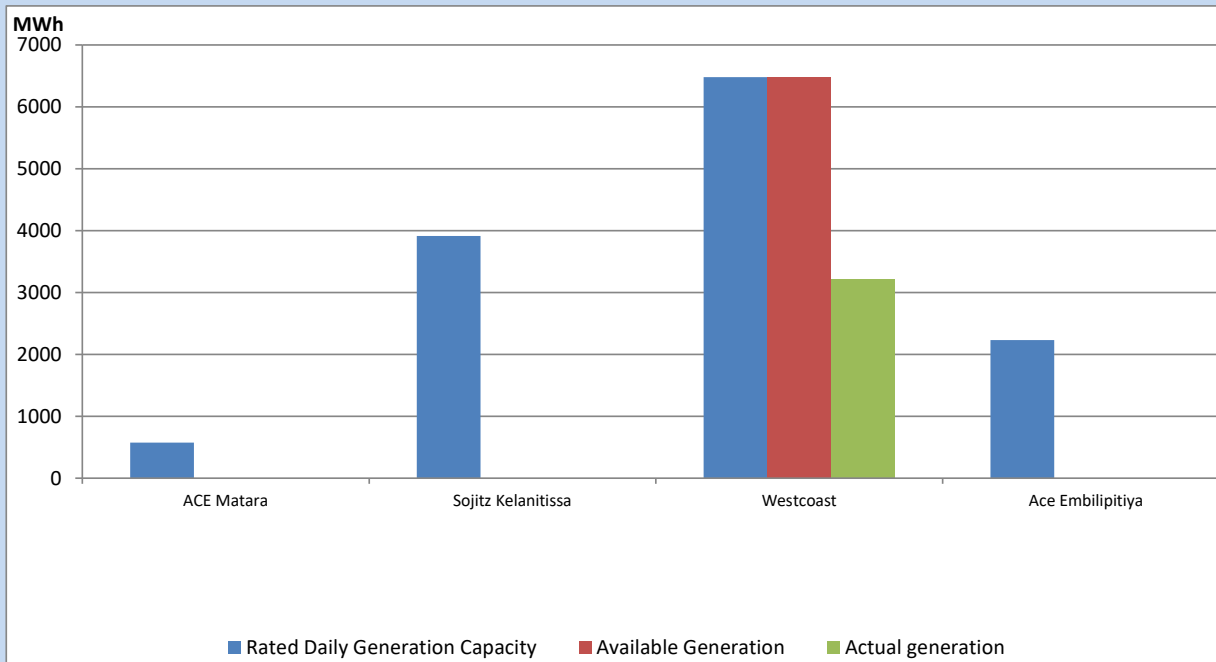
Note- Plant availability is recorded at 6.00 am on

July 22, 2022

IPP owned Thermal Plant Dispatch

July 21, 2022

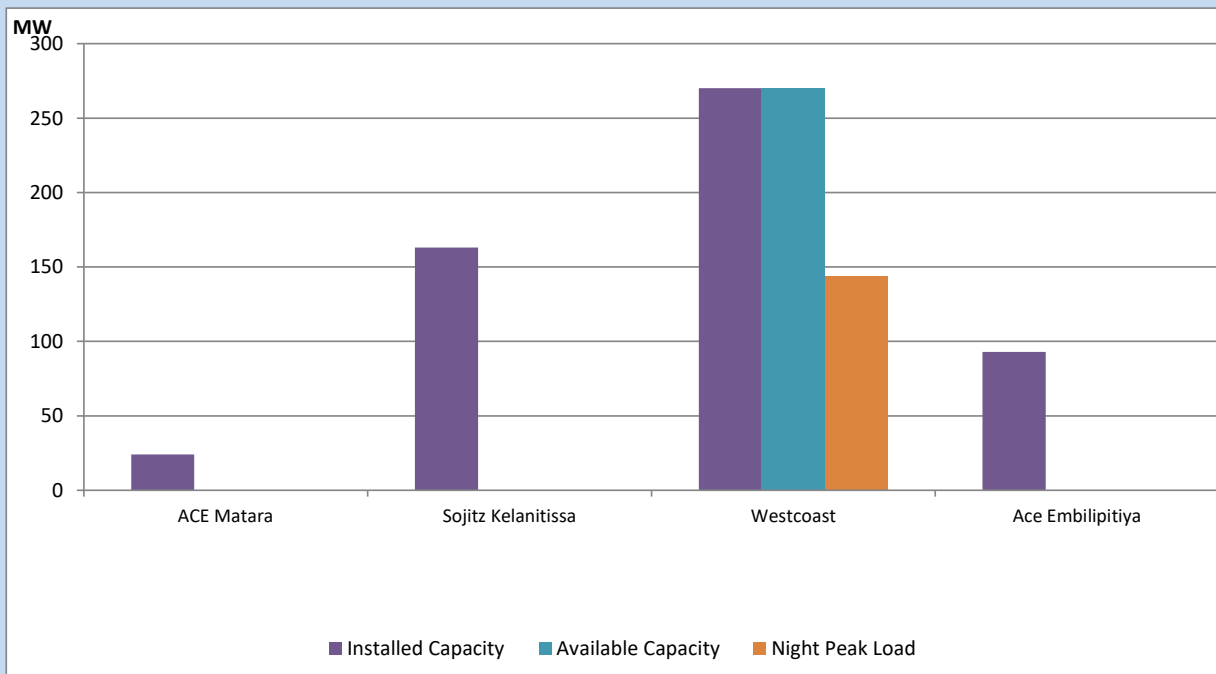
Asia Power, V Power Pallekale, Vpower Galle, V Power Horana, Vpower Hambantota, Vpower Valachchena and Altaqa Mahiyanganaya are not available due to expiration of PPAs



Available Generation is estimated based on plant availability at 6.00am on

July 22, 2022

IPP owned Thermal Plant Loading at the Night Peak

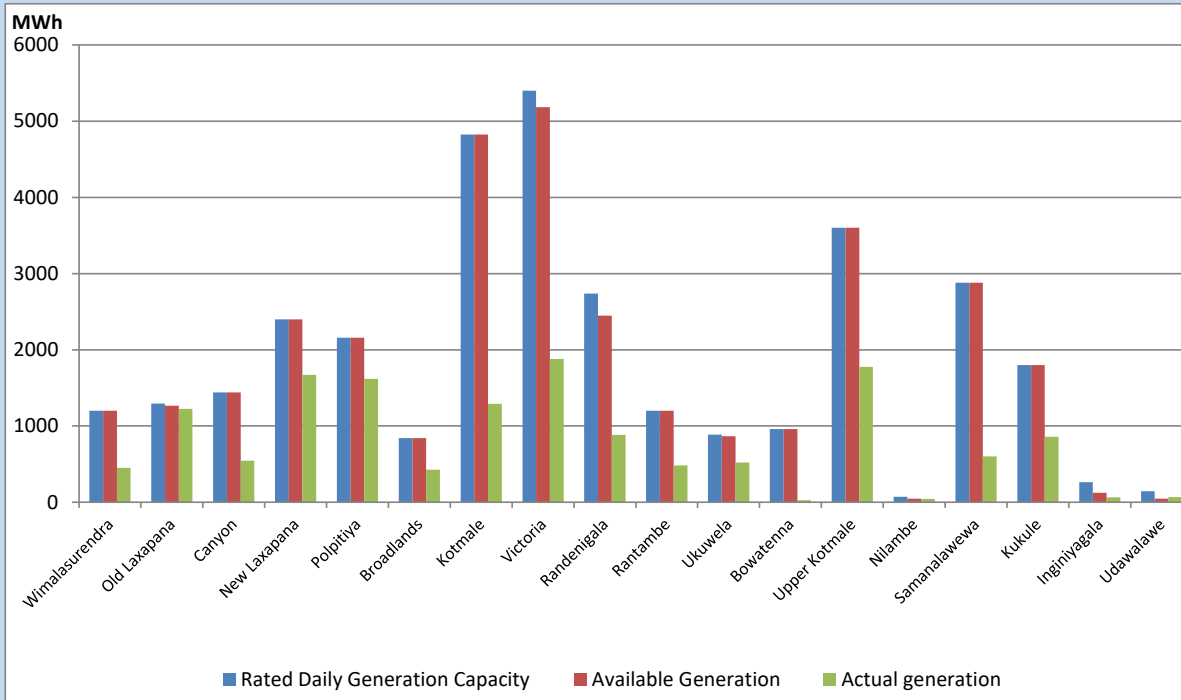


Note- Plant availability is recorded at 6.00 am on

July 22, 2022

Major Hydro Plant Dispatch

July 21, 2022

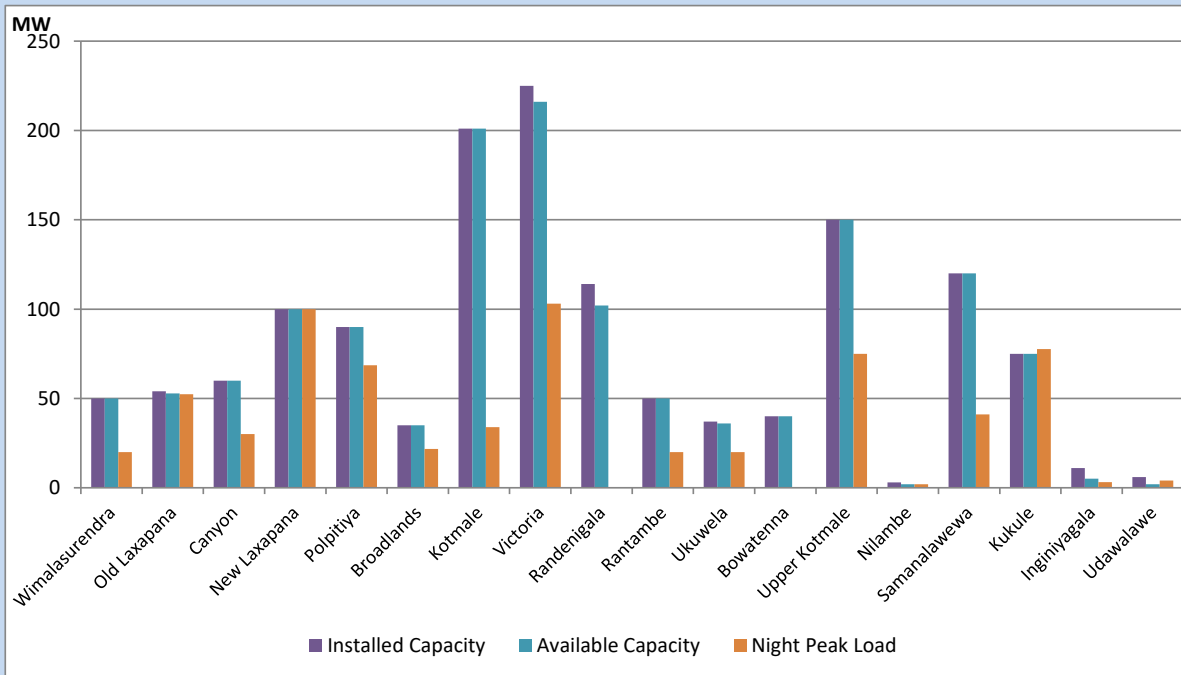


Available Generation is estimated based on plant availability at 6.00am on
Broadlands power plant is operating in the Commissioning Stage

July 22, 2022

Major Hydro Plant Loading at Night Peak

July 21, 2022



Note- Plant availability is recorded at 6.00 am on
Broadlands power plant is operating in the Commissioning Stage

July 22, 2022

Summary of Major Plant performance

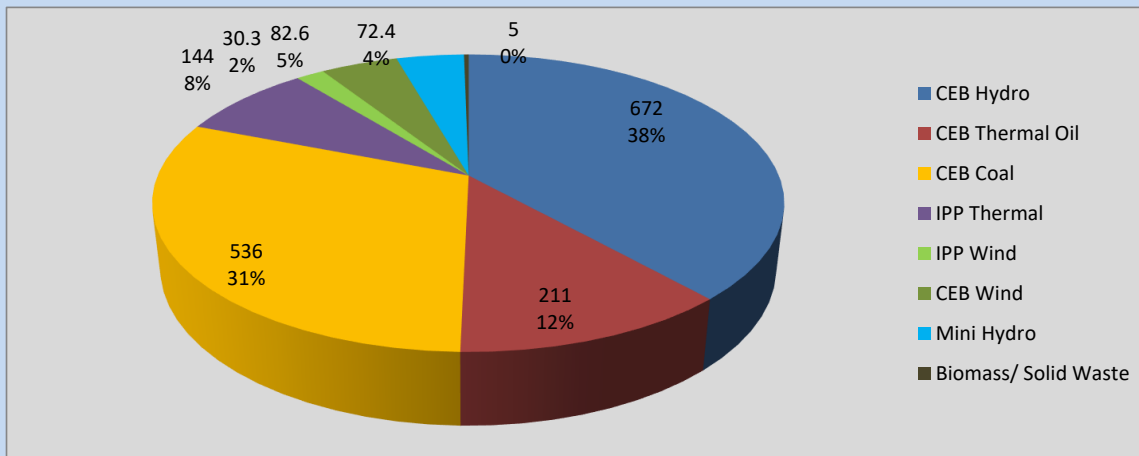
Plant	Installed Capacity	Plant Availability	Night peak Load	Plant Dispatch
	(MW)	(MW)	(MW)	(MWh)
Wimalasurendra	50	50	20	452
Old Laxapana	54	53	52	1,226
Canyon	60	60	30	545
New Laxapana	100	100	100	1,671
Polpitiya	90	90	69	1,619
Broadlands	35	35	22	426
Kotmale	201	201	34	1,290
Victoria	225	216	103	1,879
Randenigala	114	102	0	884
Rantambe	50	50	20	484
Ukuwela	37	36	20	520
Bowatenna	40	40	0	27
Upper Kotmale	150	150	75	1,777
Nilambe	3	2	2	44
Samanalawewa	120	120	41	600
Kukule	75	75	78	857
Inginiyagala	11	5	3	65
Udawalawe	6	2	4	66
Puttalam Coal I	270	270	266	6,402
Puttalam Coal II	270	0	0	0
Puttalam Coal III	270	270	270	6,502
KPS Small GTs	64	16	0	0
KPS GT 7	115	115	0	0
KCCP	161	155	154	3,245
Sapugaskanda A	70	0	0	496
Sapugaskanda B	70	0	54	1,219
Uthura Janani	26	0	0	0
Barge CEB	60	3	3	71
CEB-Thulhiriya	10	8	0	0
CEB-Kolonnawa	20	14	0	0
CEB-Mathugama	20	13	0	0
ACE Matara	24	0	0	0
Sojitz Kelanitissa	163	0	0	0
West Coast	270	270	144	3,214
ACE Embilipitiya	93	0	0	0
Total	3,397	2,520	1,754	39,546

Plant availability is the availability recorded at 6 am on

July 22, 2022

Contribution to the Night Peak in MW

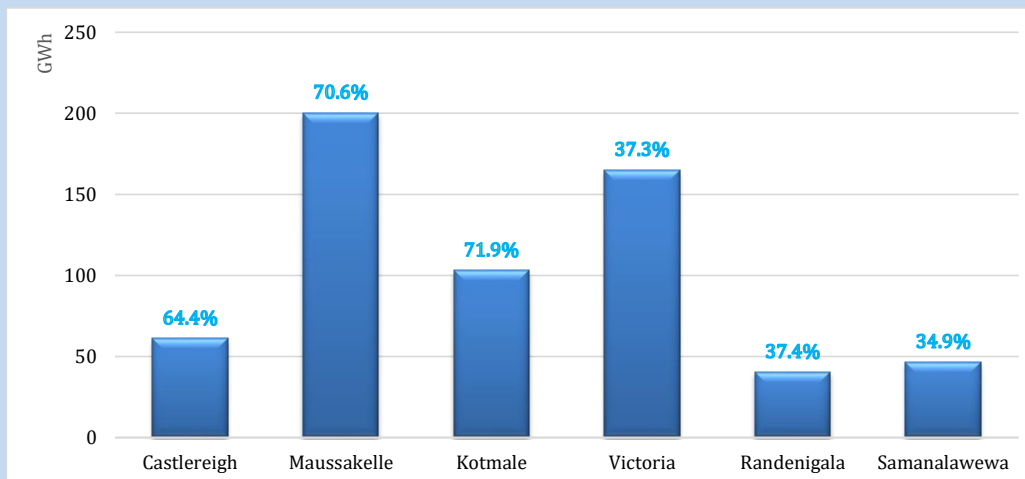
July 21, 2022



Night Peak*	1,752.9 MW
Day Peak	2,006.3 MW
Minimum Demand	1,288.4 MW

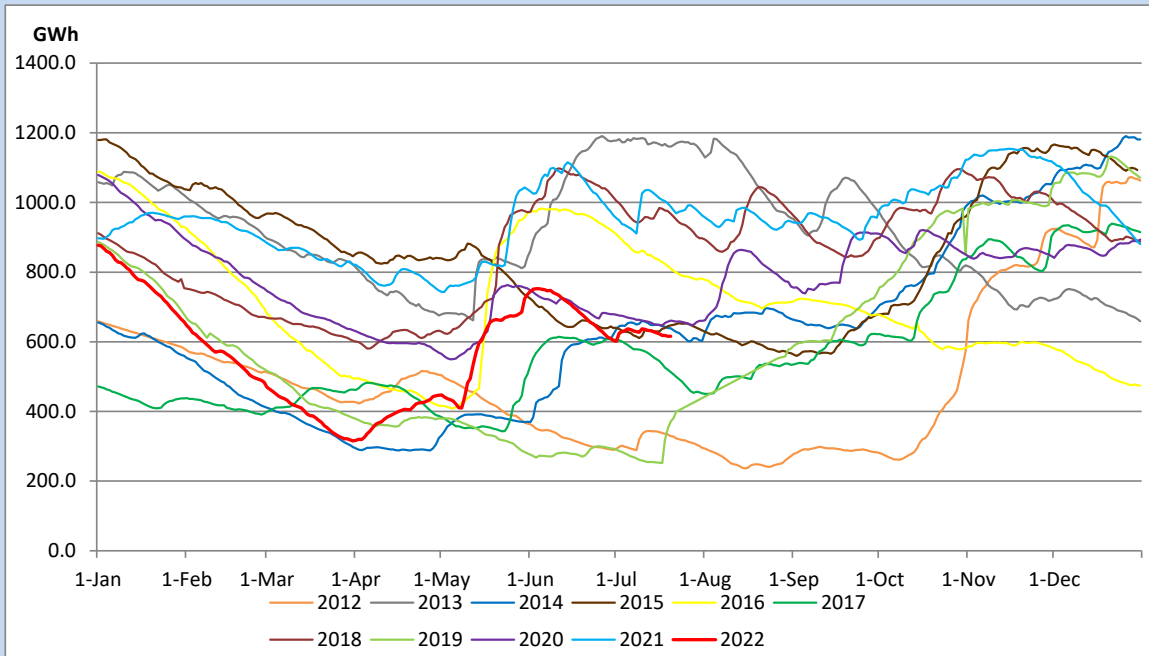
Above figures are excluding contribution from Roof Top Solar, 1MW solar, certain Wind plants and Mini Hydro plants

Reservoir Levels - as at 06.00 Hr on July 22, 2022

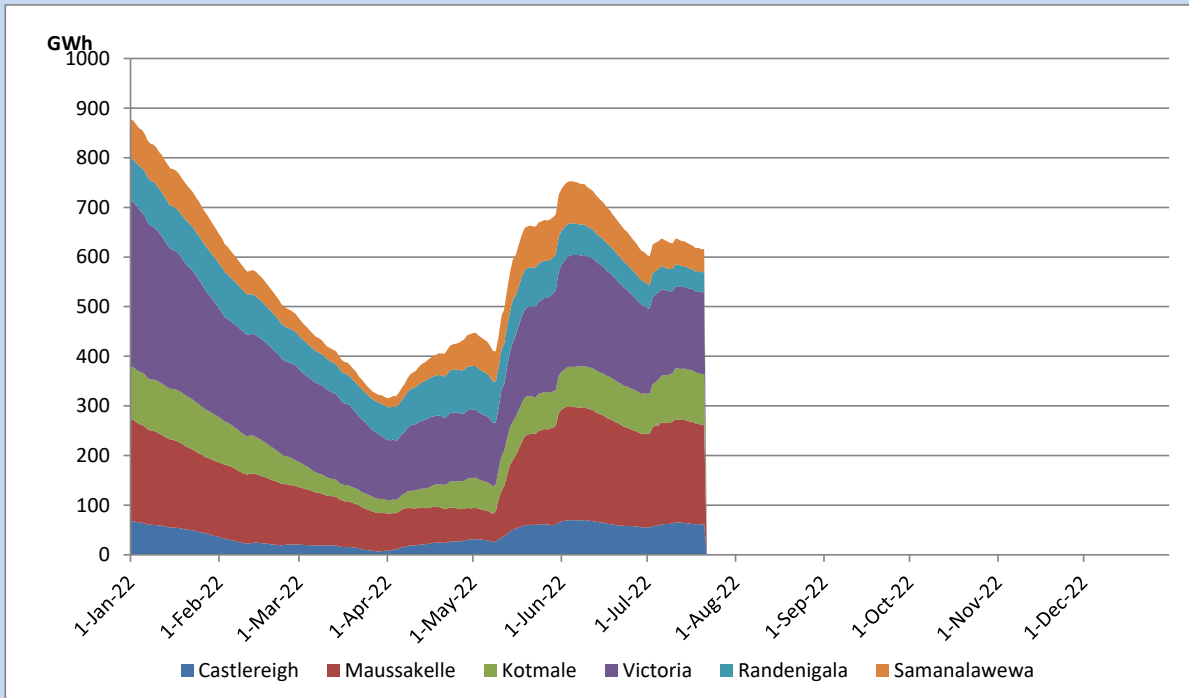


Total Reservoir Level	616.1 GWh
% of Total capacity	51.1%

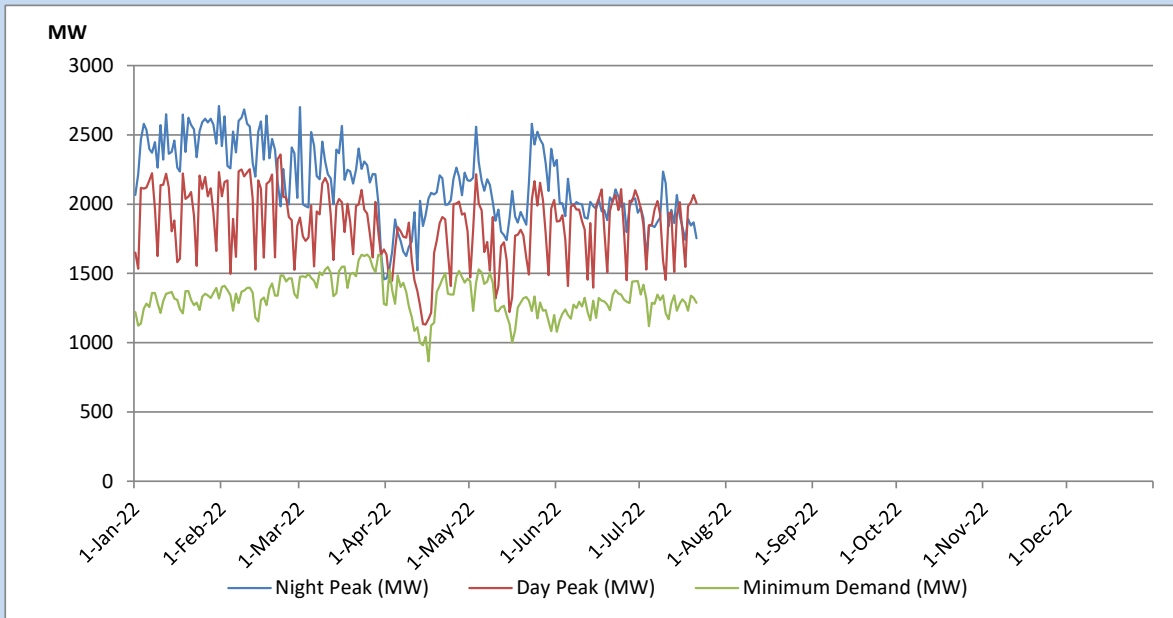
Comparison of Total Reservoir Storage Levels with Past Years



Variation of Major Hydro Reservoir Levels in the current year (GWh)



Variation of Demand during the current year

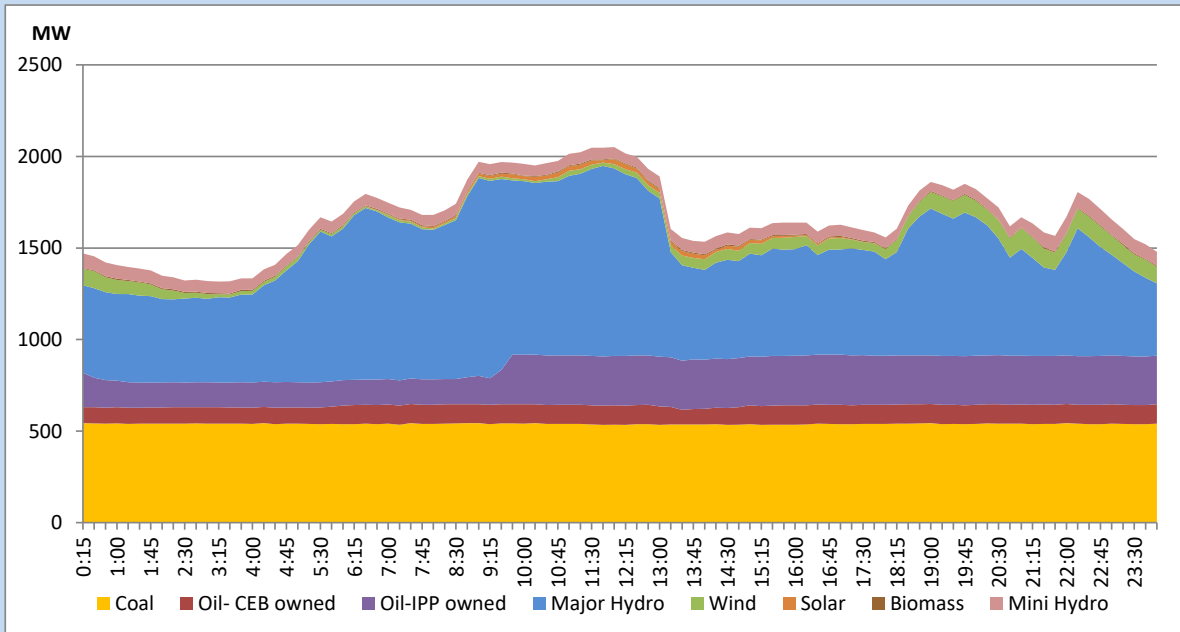


The above figures are excluding contribution from Roof Top Solar, 1MW solar, certain Wind plants and Mini Hydro plants

Daily Load Curve of the Previous day

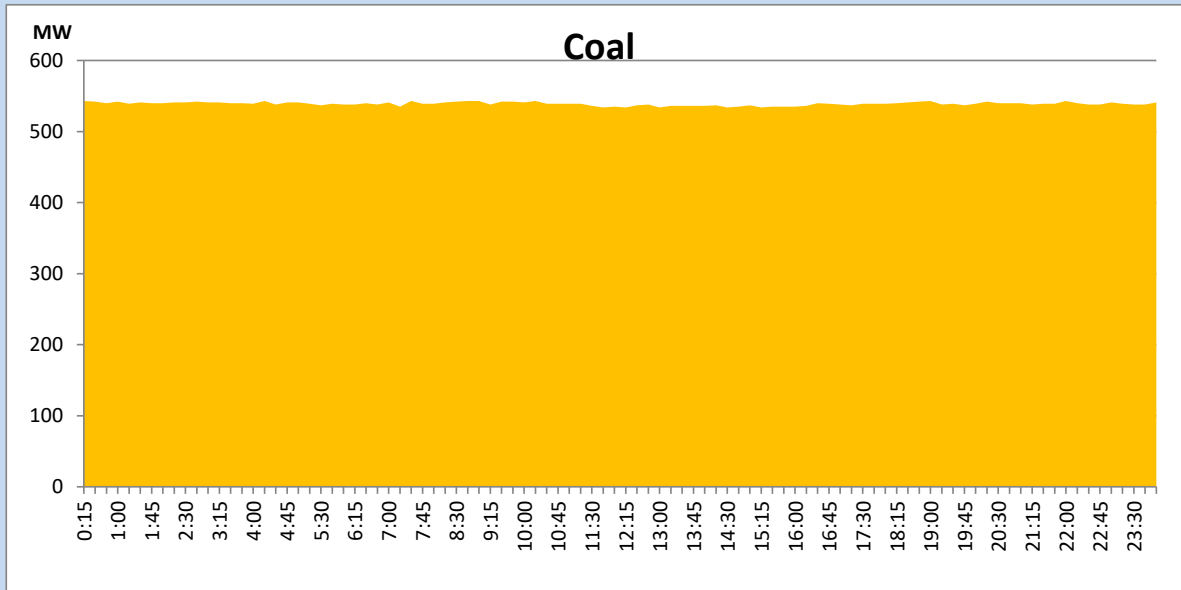
July 20, 2022

Solar and wind data is based on Telemetered Power Stations only



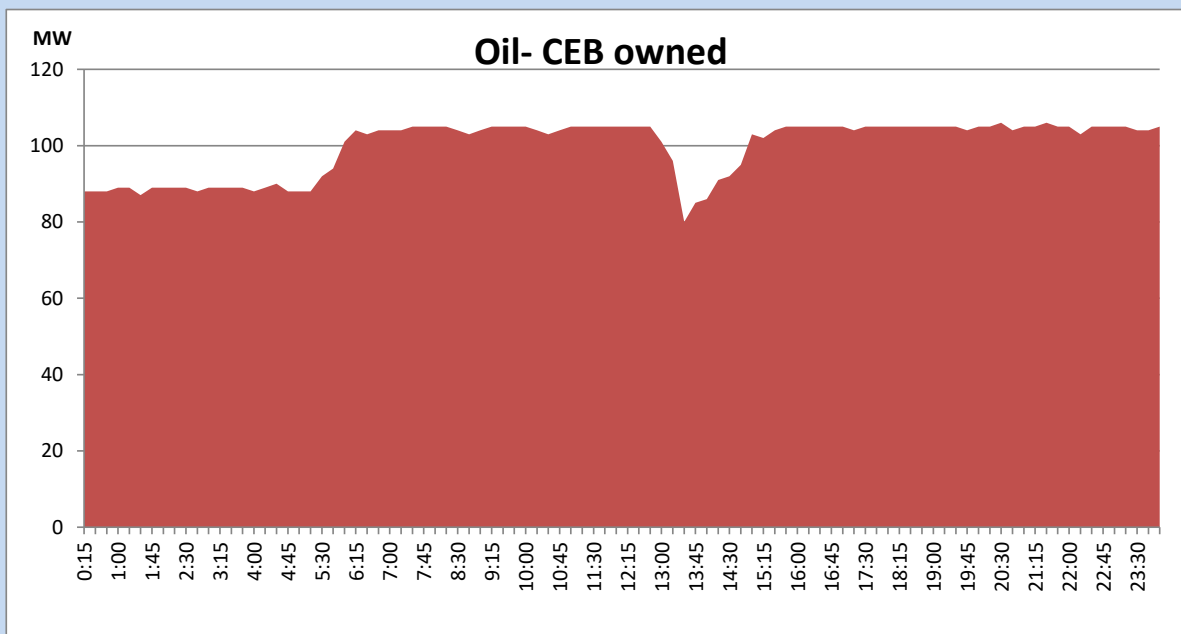
Coal Generation during the Previous day

July 20, 2022



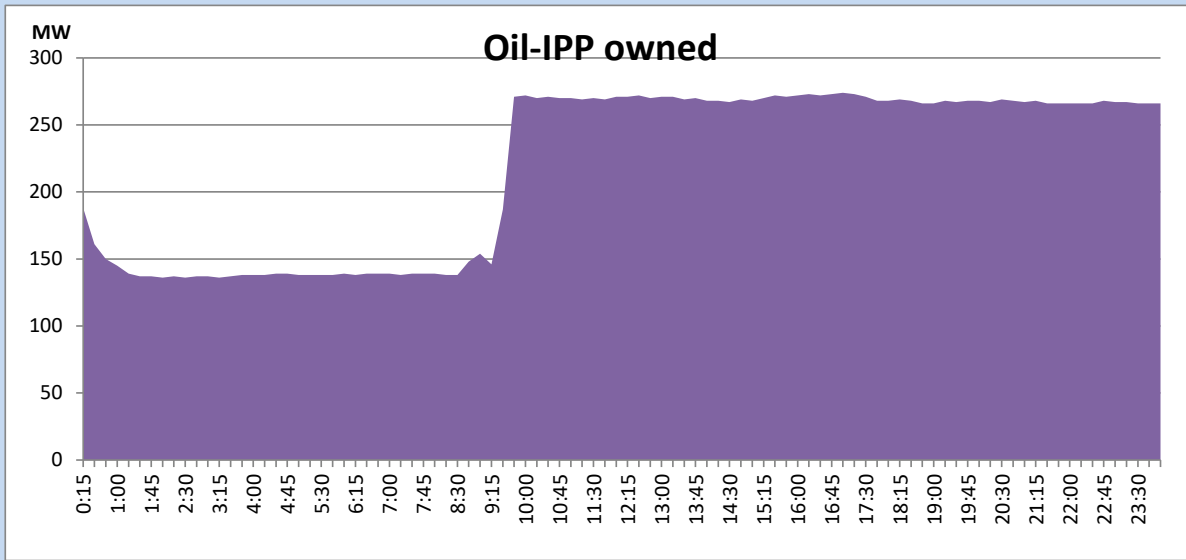
CEB Oil Plant Generation during the Previous day

July 20, 2022



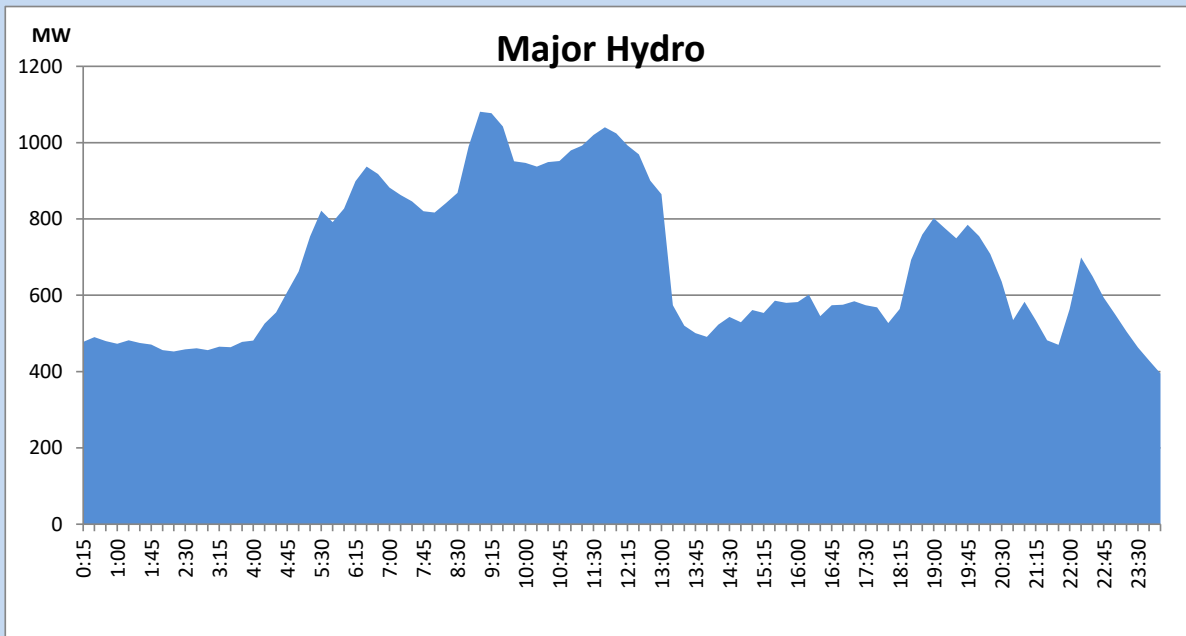
IPP Oil Plant Generation during the Previous day

July 20, 2022



Major Hydro Generation during the Previous day

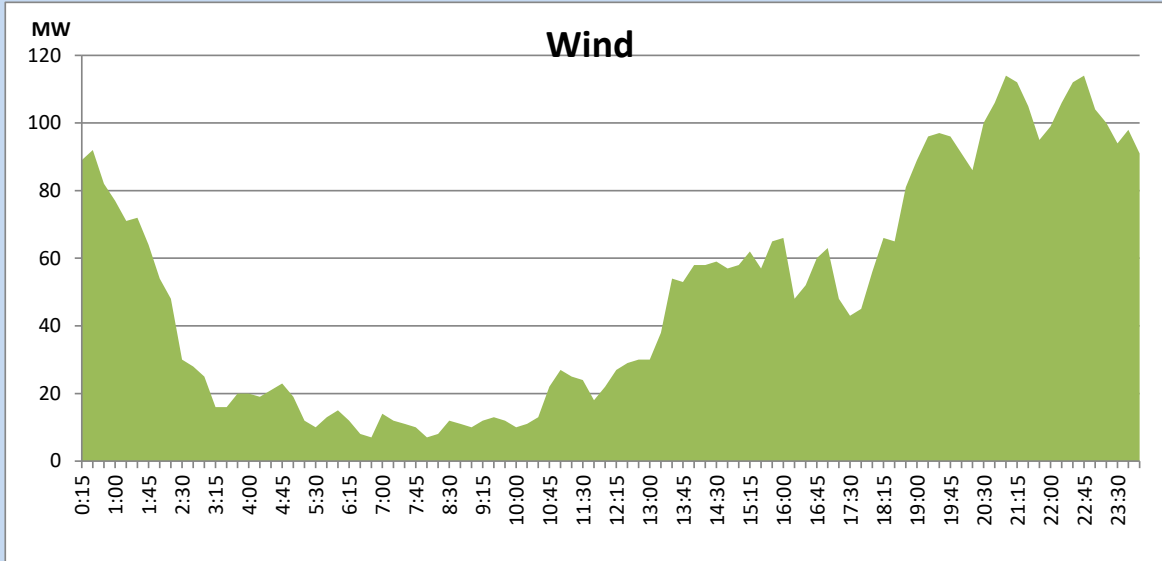
July 20, 2022



Wind Generation during the Previous day

July 20, 2022

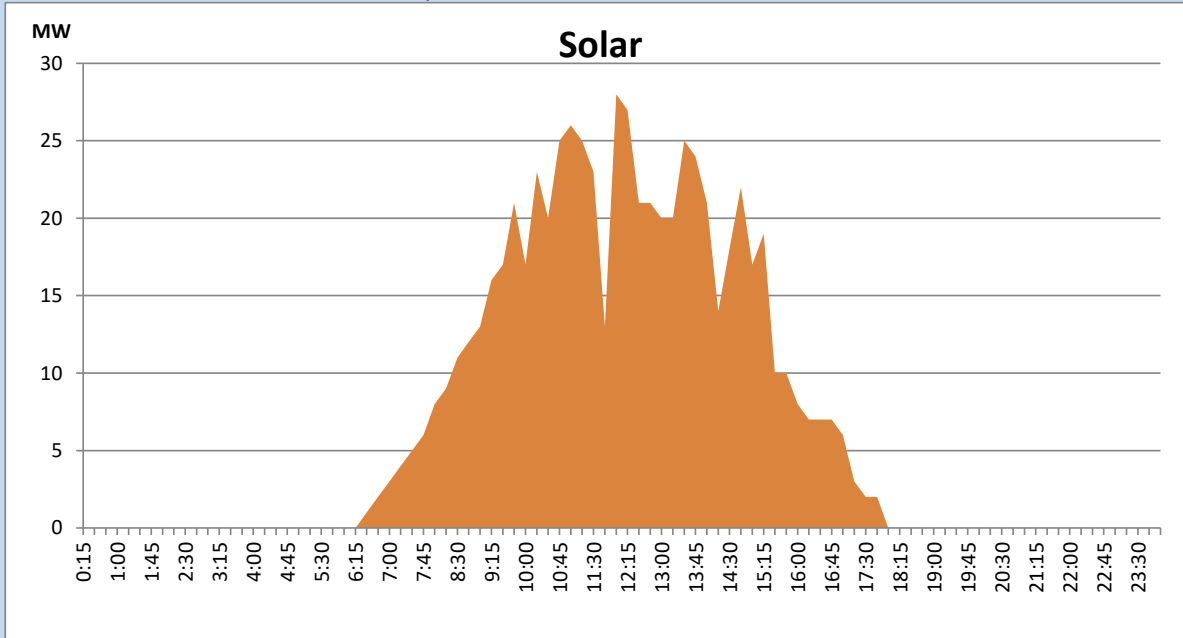
Based on Telemetered Power Stations only



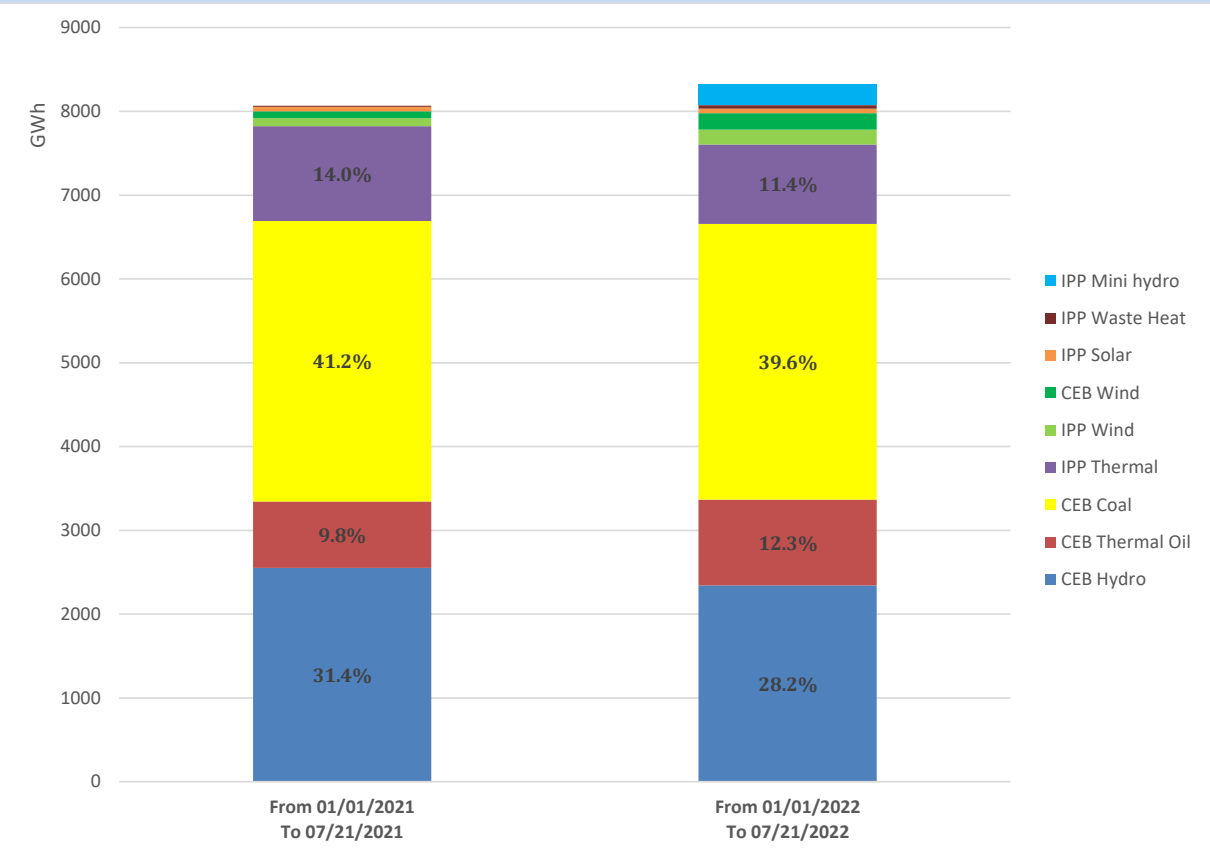
Solar Generation during the Previous day

July 20, 2022

Based on Telemetered Power Stations only



Cumulative Dispatch Comparison with Last Year



Thermal Plant Fuel types

Power Station	Primary Fuel
CEB Thermal	
Sapugaskanda 1	Heavy Fuel
Sapugaskanda 2	Heavy Fuel
Kelanitissa Small Gas Turbines	Auto Diesel
GT 7 - Kelanitissa	Auto Diesel
Kelanitissa CCY	Naphtha or Diesel
Lakvijaya 1	Coal
Lakvijaya 2	Coal
Lakvijaya 3	Coal
Uthuru Janani	Heavy Fuel
Barge CEB	Heavy Fuel

Power Station	Primary Fuel
Private Thermal	
Sojitz - Kelanitissa	Auto Diesel
West Coast	Auto Diesel / Heavy Fuel
ACE Matara	Heavy Fuel
ACE Embilipitiya	Heavy Fuel

Major Incidents during the day -as reported by CEB morning of

July 22, 2022

- 1) Rotational manual load shedding was carried out from 05:30 hrs to 08:30 hrs and 13:00 hrs to 22:00 hrs.
- 2) Victoria – Randenigala cct tripped from both ends at 17:19hrs due to the operation of differential protection rejecting Randengala and Rantambe generations (35MW and 20MW respectively) from the system and causing N/Eliya, Badulla, Mahi, Vauna, Ampa and Monara GSS to be dead. All the affected GSS were normalized by 17:33hrs. Rand made available at 17:50hrs and Rant resumed generation at 17:56hrs.
Vict – Rand cct normalized at 17:58hrs.
- 3) Kukule ganga spilling started at 21:00hrs and continue to the present hour.
- 4) N/Chillaw - Veyangoda cct 02 tripped and A/R from both ends at 05:39hrs, due to the operation of distance protection.