

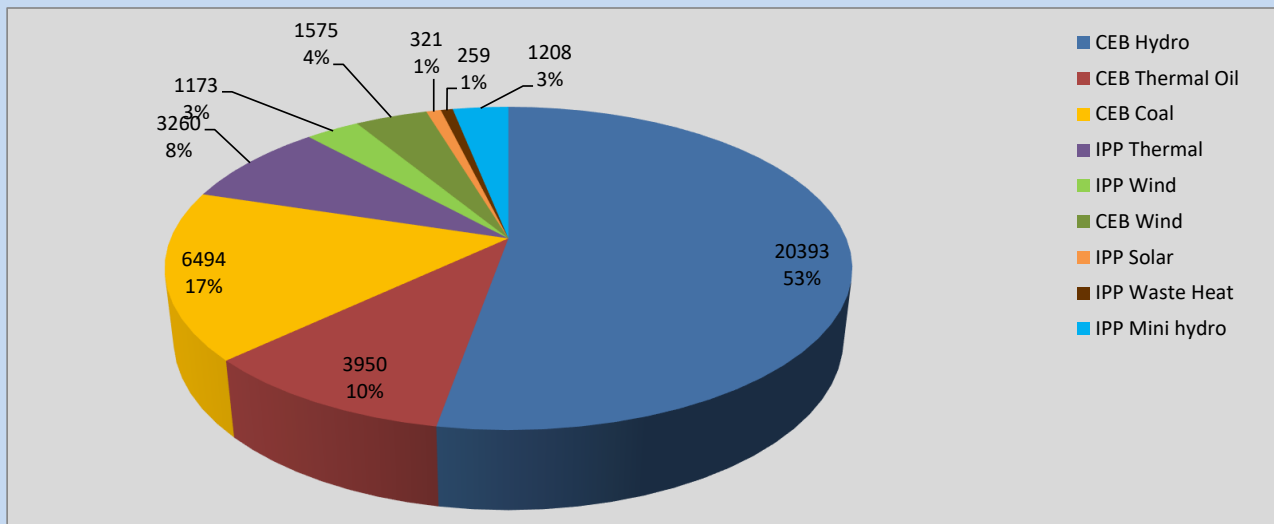
Generation and Reservoirs Statistics

August 20, 2022



PUBLIC UTILITIES COMMISSION OF SRI LANKA

Daily Generation Mix in MWh



Total Generation 38,633 MWh

Note: Above data is excluding contribution from Roof Top Solar, 1MW Solar and certain Mini Hydro plants

Cumulative Dispatch

Note: Following data is Excluding contribution from Roof Top Solar, 1MW solar and Mini Hydro plants

For Current Month

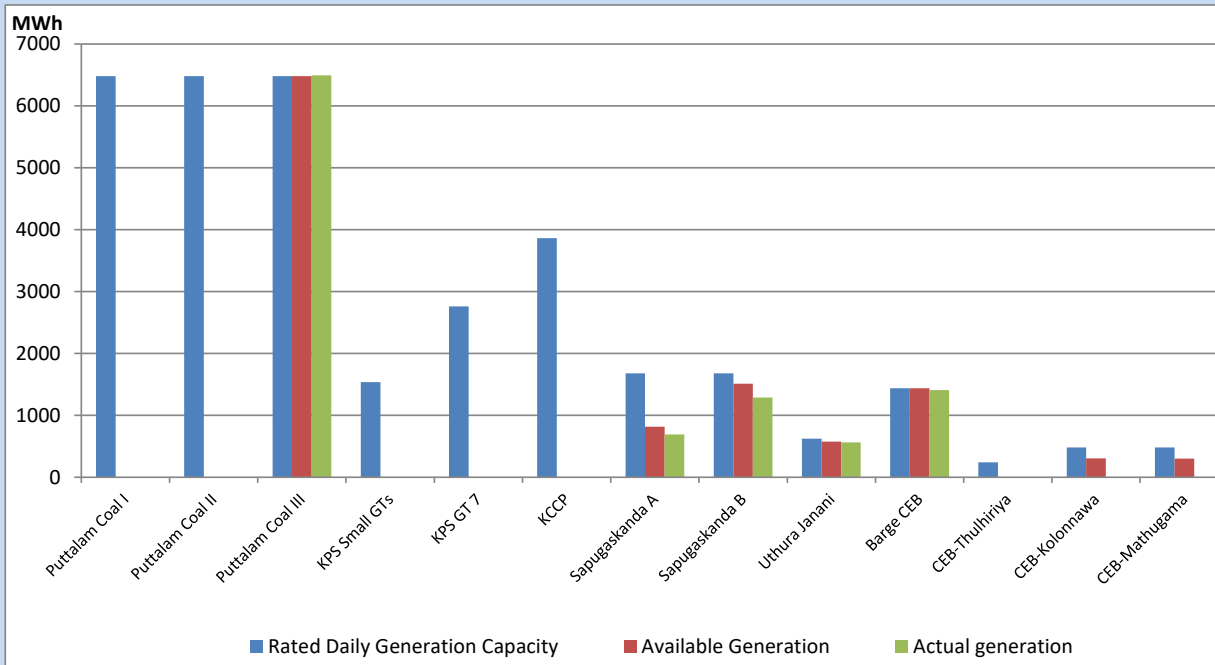
| Category | Dispatch (GWh) | Percentage |
|-----------------|----------------|------------|
| CEB Hydro | 410.03 | 52.61% |
| CEB Thermal Oil | 31.34 | 4.02% |
| CEB Coal | 194.46 | 24.95% |
| IPP Thermal | 35.35 | 4.54% |
| SPP Wind | 34.54 | 4.43% |
| CEB Wind | 32.97 | 4.23% |
| SPP Solar | 5.55 | 0.71% |
| SPP Solid Waste | 2.90 | 0.37% |
| Mini Hydro | 32.25 | 4.14% |
| Total | 779.39 | |

For Current Year

| Category | Dispatch (GWh) | Percentage |
|-----------------|----------------|------------|
| CEB Hydro | 2,908.2 | 30.71% |
| CEB Thermal Oil | 1,086.7 | 11.48% |
| CEB Coal | 3,614.1 | 38.17% |
| IPP Thermal | 1,007.8 | 10.64% |
| SPP Wind | 218.5 | 2.31% |
| CEB Wind | 234.2 | 2.47% |
| SPP Solar | 59.5 | 0.63% |
| SPP Solid Waste | 47.0 | 0.50% |
| Mini Hydro | 293.2 | 3.10% |
| Total | 9,469.0 | |

CEB owned Thermal Plant Dispatch

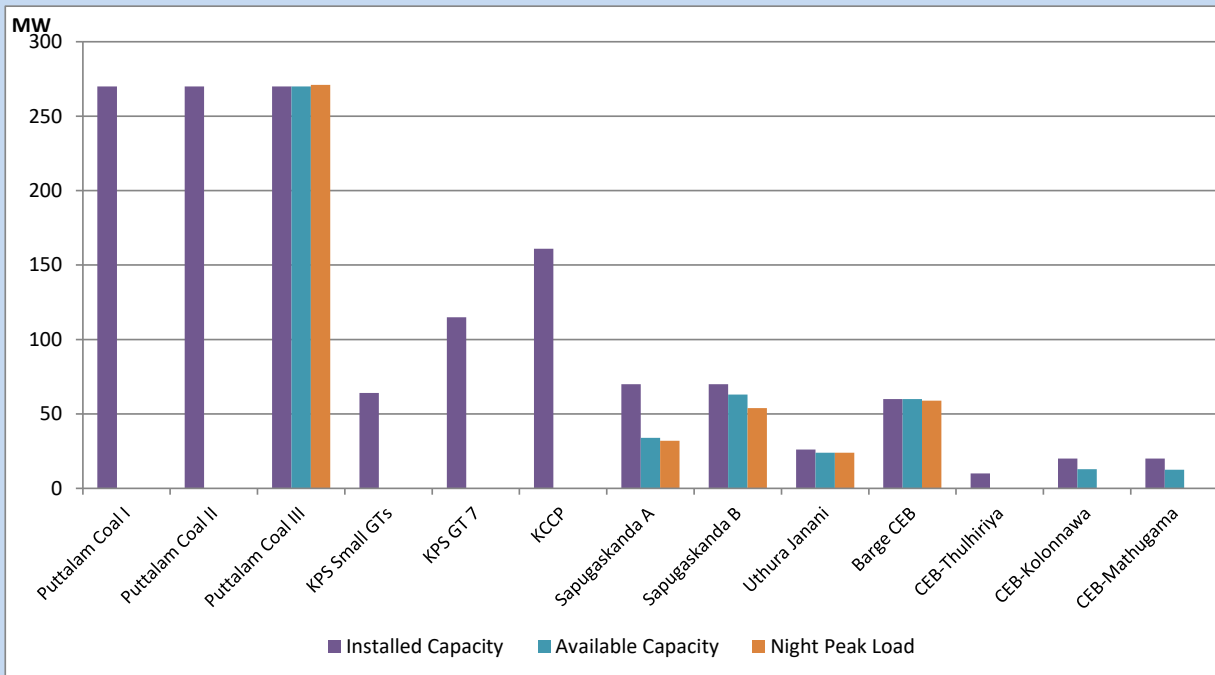
August 20, 2022



Available Generation is estimated based on plant availability at 6.00am on

August 21, 2022

CEB owned Thermal Plant Loading at the Night Peak



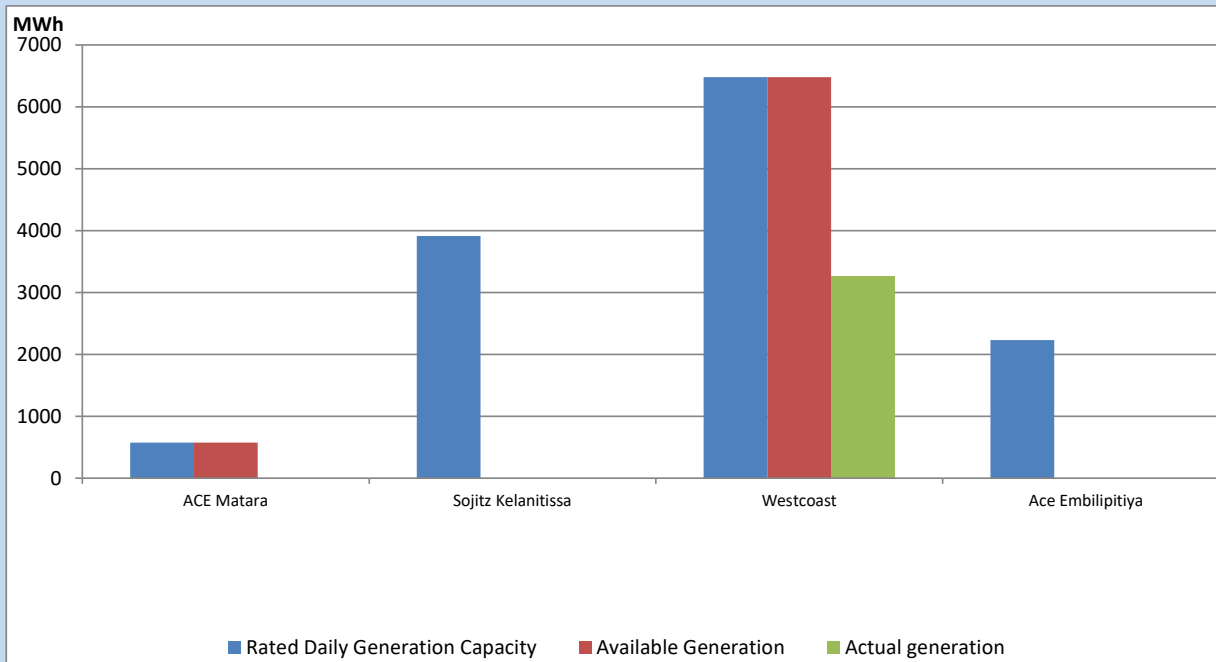
Note- Plant availability is recorded at 6.00 am on

August 21, 2022

IPP owned Thermal Plant Dispatch

August 20, 2022

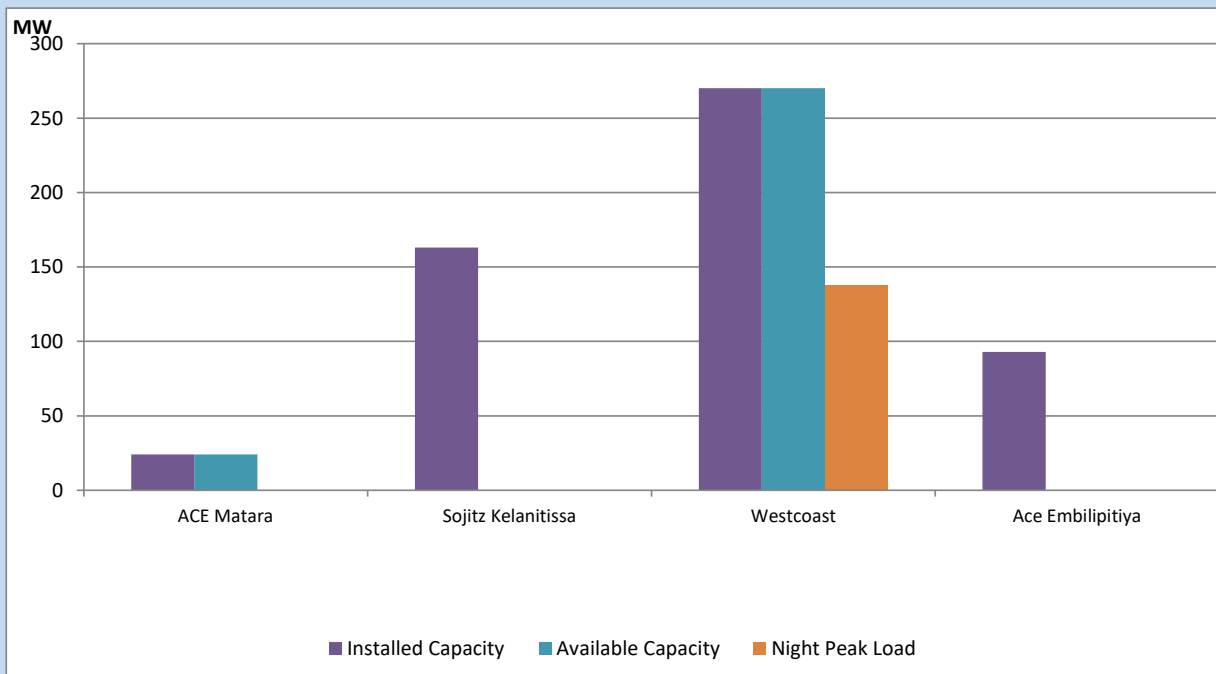
Asia Power, V Power Pallekale, Vpower Galle, V Power Horana, Vpower Hambantota, Vpower Valachchena and Altaqa Mahiyanganaya are not available due to expiration of PPAs



Available Generation is estimated based on plant availability at 6.00am on

August 21, 2022

IPP owned Thermal Plant Loading at the Night Peak

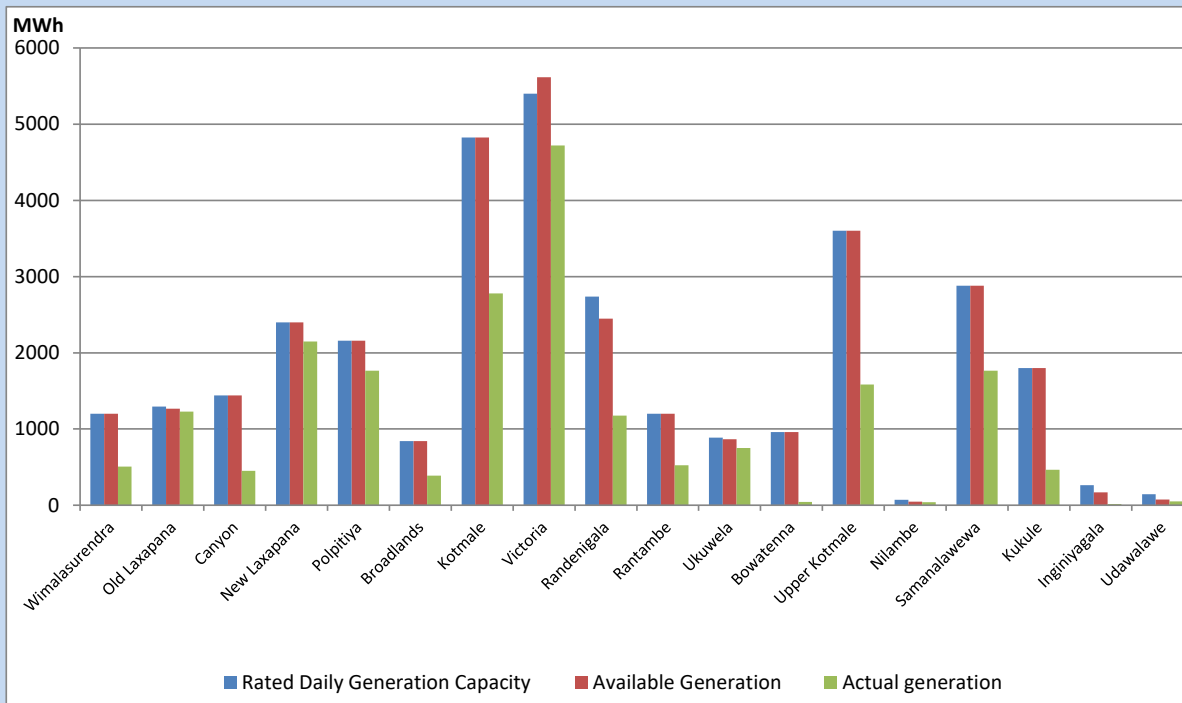


Note- Plant availability is recorded at 6.00 am on

August 21, 2022

Major Hydro Plant Dispatch

August 20, 2022

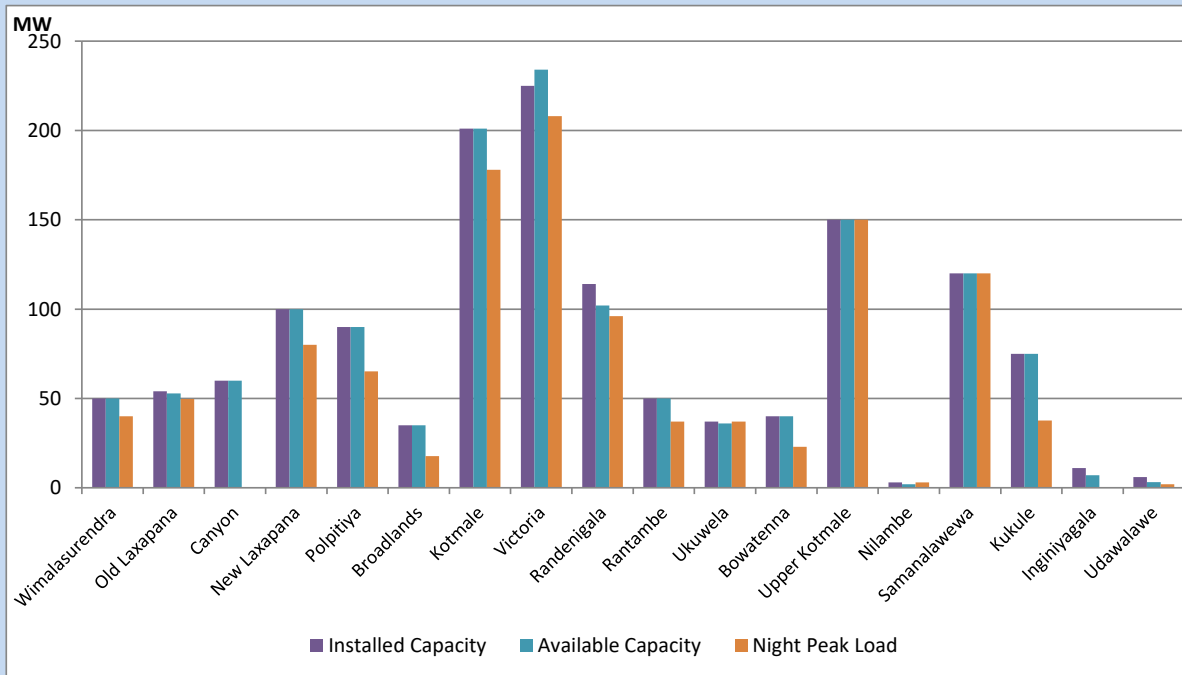


Available Generation is estimated based on plant availability at 6.00am on August 21, 2022
 Broadlands power plant is operating in the Commissioning Stage

August 21, 2022

Major Hydro Plant Loading at Night Peak

August 20, 2022



Note- Plant availability is recorded at 6.00 am on August 21, 2022
 Broadlands power plant is operating in the Commissioning Stage

Summary of Major Plant performance

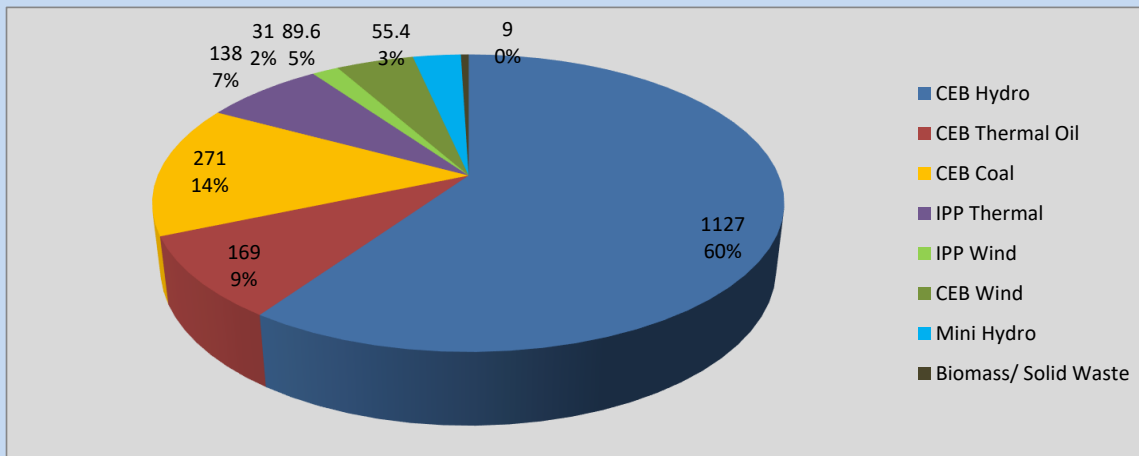
| Plant | Installed Capacity | Plant Availability | Night peak Load | Plant Dispatch |
|--------------------|--------------------|--------------------|-----------------|----------------|
| | (MW) | (MW) | (MW) | (MWh) |
| Wimalasurendra | 50 | 50 | 40 | 506 |
| Old Laxapana | 54 | 53 | 50 | 1,227 |
| Canyon | 60 | 60 | 0 | 452 |
| New Laxapana | 100 | 100 | 80 | 2,149 |
| Polpitiya | 90 | 90 | 65 | 1,764 |
| Broadlands | 35 | 35 | 18 | 387 |
| Kotmale | 201 | 201 | 178 | 2,780 |
| Victoria | 225 | 234 | 208 | 4,719 |
| Randenigala | 114 | 102 | 96 | 1,177 |
| Rantambe | 50 | 50 | 37 | 523 |
| Ukuwela | 37 | 36 | 37 | 749 |
| Bowatenna | 40 | 40 | 23 | 44 |
| Upper Kotmale | 150 | 150 | 150 | 1,585 |
| Nilambe | 3 | 2 | 3 | 38 |
| Samanalawewa | 120 | 120 | 120 | 1,766 |
| Kukule | 75 | 75 | 38 | 464 |
| Inginiyagala | 11 | 7 | 0 | 14 |
| Udawalawe | 6 | 3 | 2 | 49 |
| Puttalam Coal I | 270 | 0 | 0 | 0 |
| Puttalam Coal II | 270 | 0 | 0 | 0 |
| Puttalam Coal III | 270 | 270 | 271 | 6,494 |
| KPS Small GTs | 64 | 0 | 0 | 0 |
| KPS GT 7 | 115 | 0 | 0 | 0 |
| KCCP | 161 | 0 | 0 | 0 |
| Sapugaskanda A | 70 | 34 | 32 | 690 |
| Sapugaskanda B | 70 | 63 | 54 | 1,289 |
| Uthura Janani | 26 | 24 | 24 | 563 |
| Barge CEB | 60 | 60 | 59 | 1,408 |
| CEB-Thulhiriya | 10 | 0 | 0 | 0 |
| CEB-Kolonnawa | 20 | 13 | 0 | 0 |
| CEB-Mathugama | 20 | 13 | 0 | 0 |
| ACE Matara | 24 | 24 | 0 | 0 |
| Sojitz Kelanitissa | 163 | 0 | 0 | 0 |
| West Coast | 270 | 270 | 138 | 3,260 |
| ACE Embilipitiya | 93 | 0 | 0 | 0 |
| Total | 3,397 | 2,178 | 1,907 | 38,633 |

Plant availability is the availability recorded at 6 am on

August 21, 2022

Contribution to the Night Peak in MW

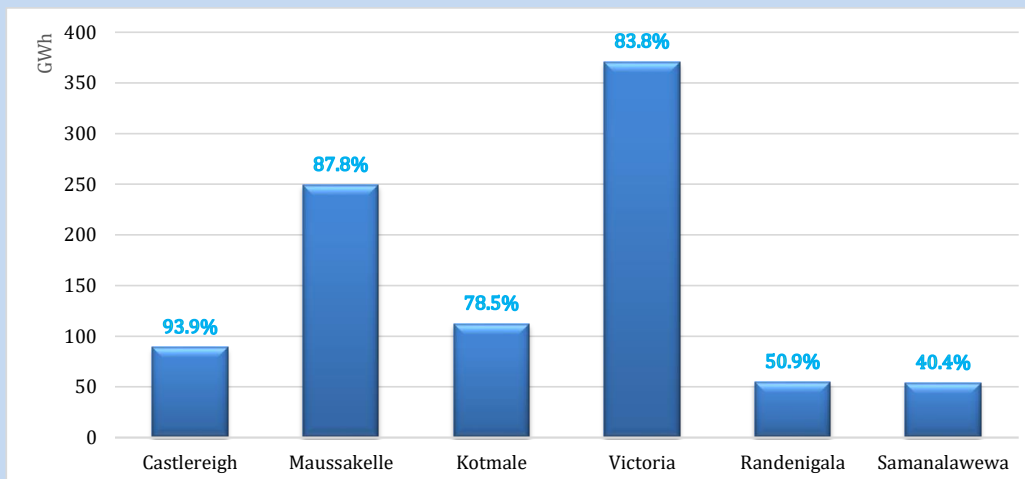
August 20, 2022



| | |
|----------------|------------|
| Night Peak* | 1,890.2 MW |
| Day Peak | 1,786.0 MW |
| Minimum Demand | 1,365.8 MW |

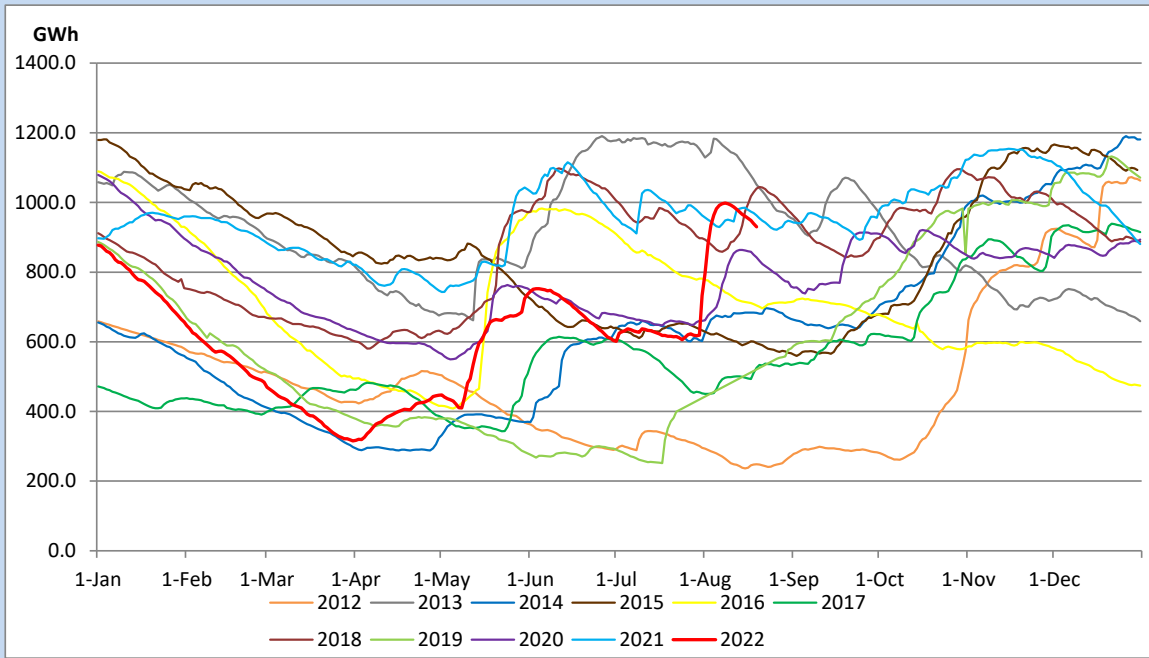
Above figures are excluding contribution from Roof Top Solar, 1MW solar, certain Wind plants and Mini Hydro plants

Reservoir Levels - as at 06.00 Hr on August 21, 2022

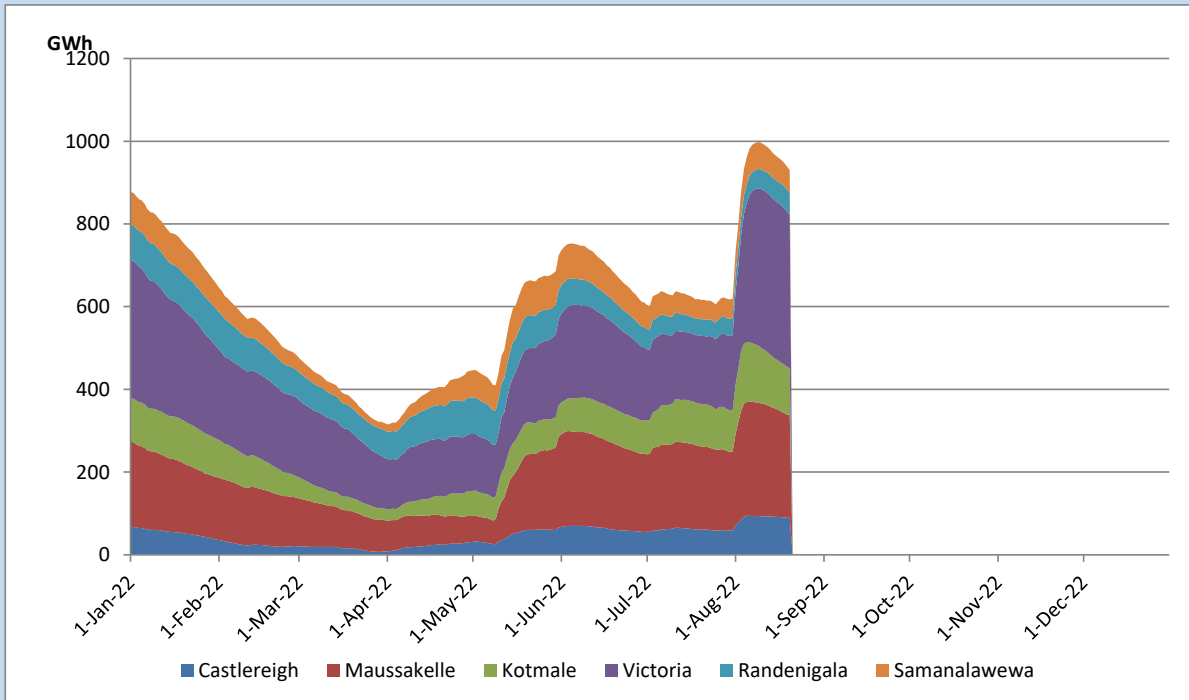


| | |
|-----------------------|-----------|
| Total Reservoir Level | 929.8 GWh |
| % of Total capacity | 77.2% |

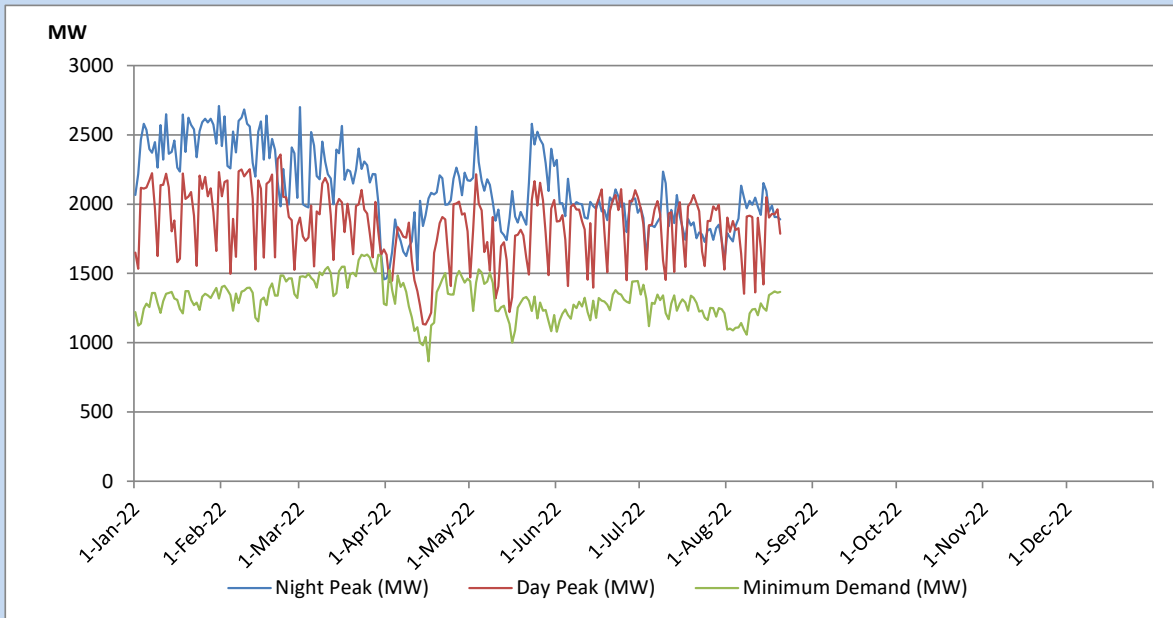
Comparison of Total Reservoir Storage Levels with Past Years



Variation of Major Hydro Reservoir Levels in the current year (GWh)



Variation of Demand during the current year

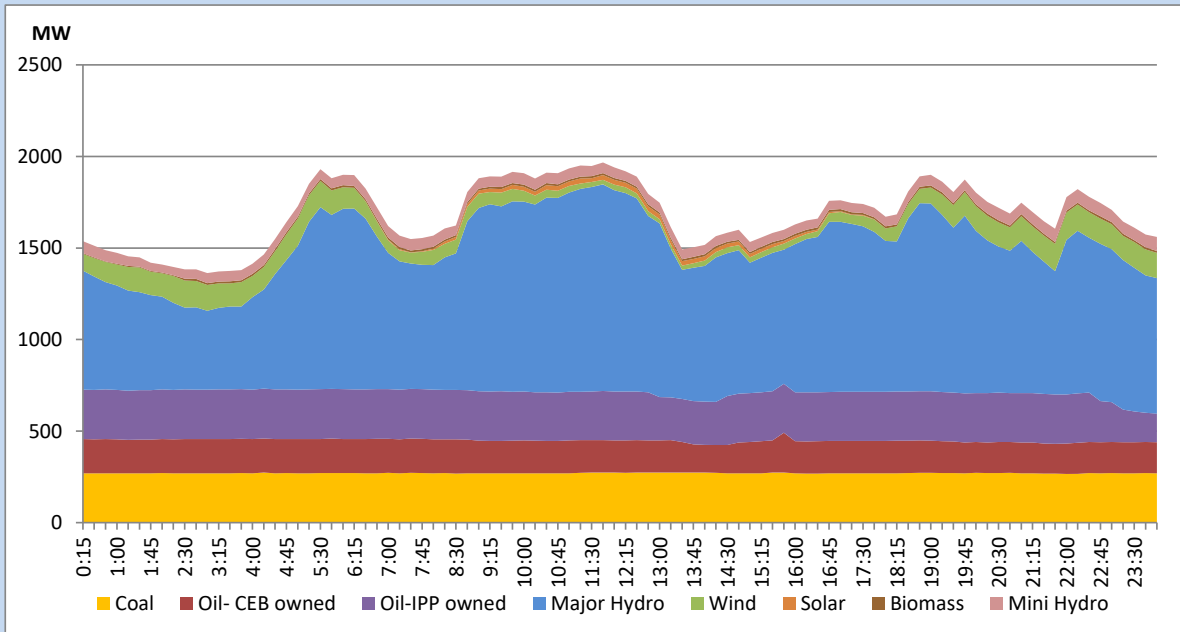


The above figures are excluding contribution from Roof Top Solar, 1MW solar, certain Wind plants and Mini Hydro plants

Daily Load Curve of the Previous day

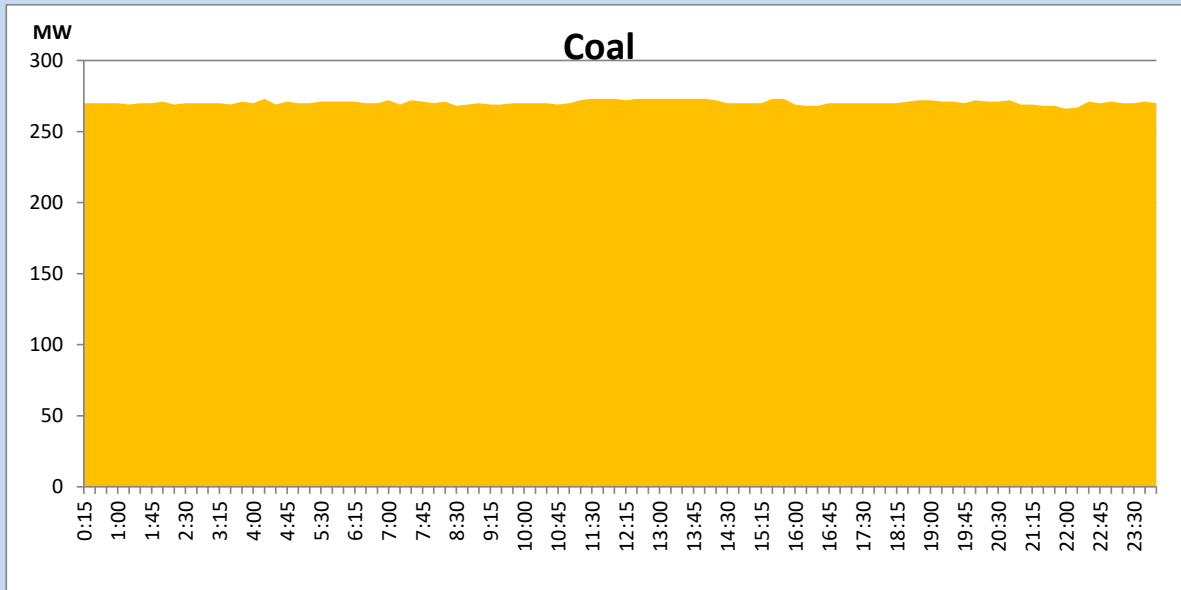
August 19, 2022

Solar and wind data is based on Telemetered Power Stations only



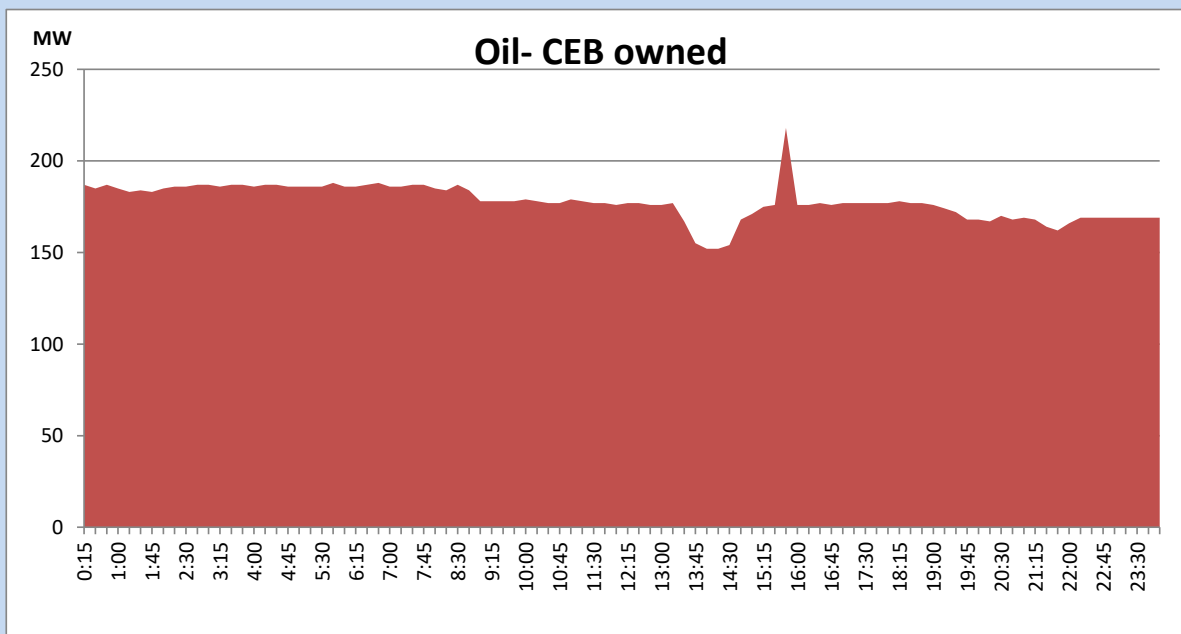
Coal Generation during the Previous day

August 19, 2022



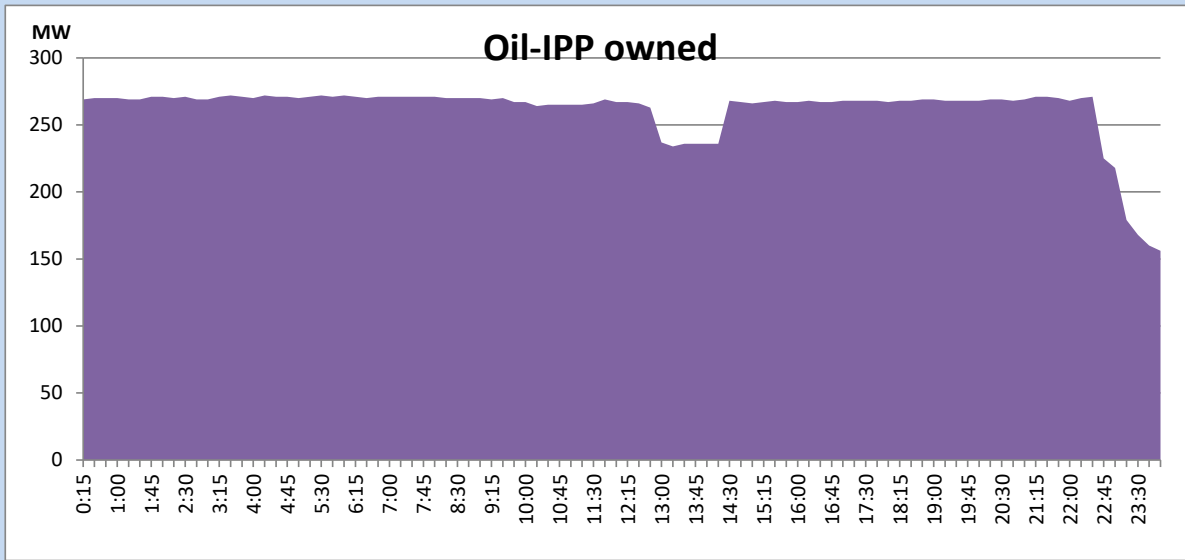
CEB Oil Plant Generation during the Previous day

August 19, 2022



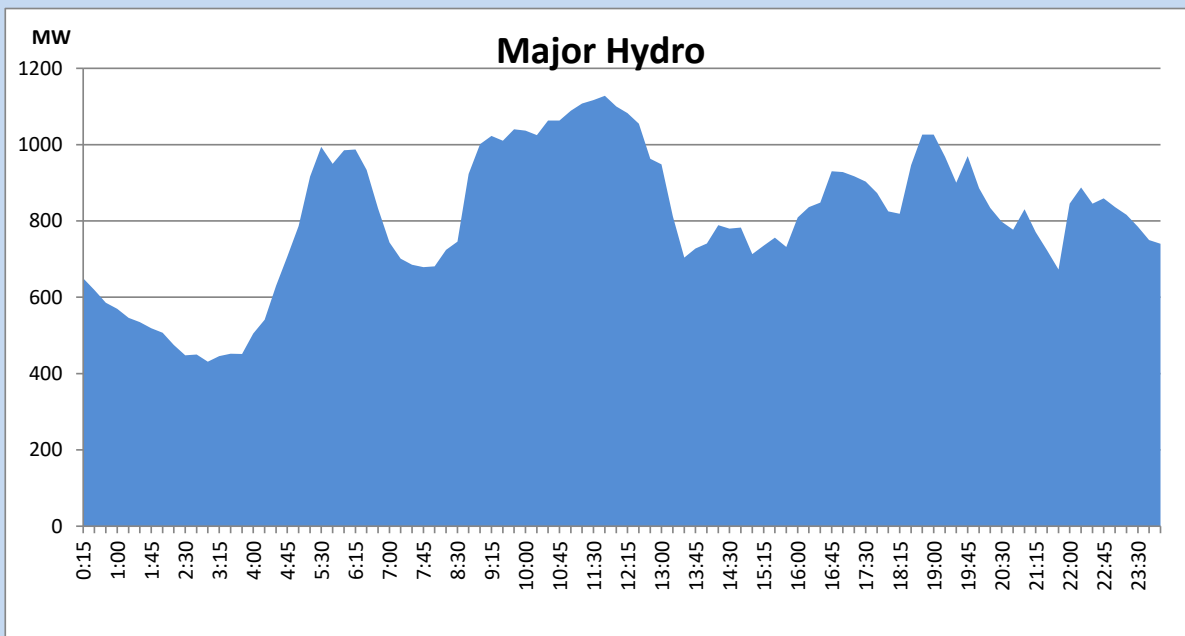
IPP Oil Plant Generation during the Previous day

August 19, 2022



Major Hydro Generation during the Previous day

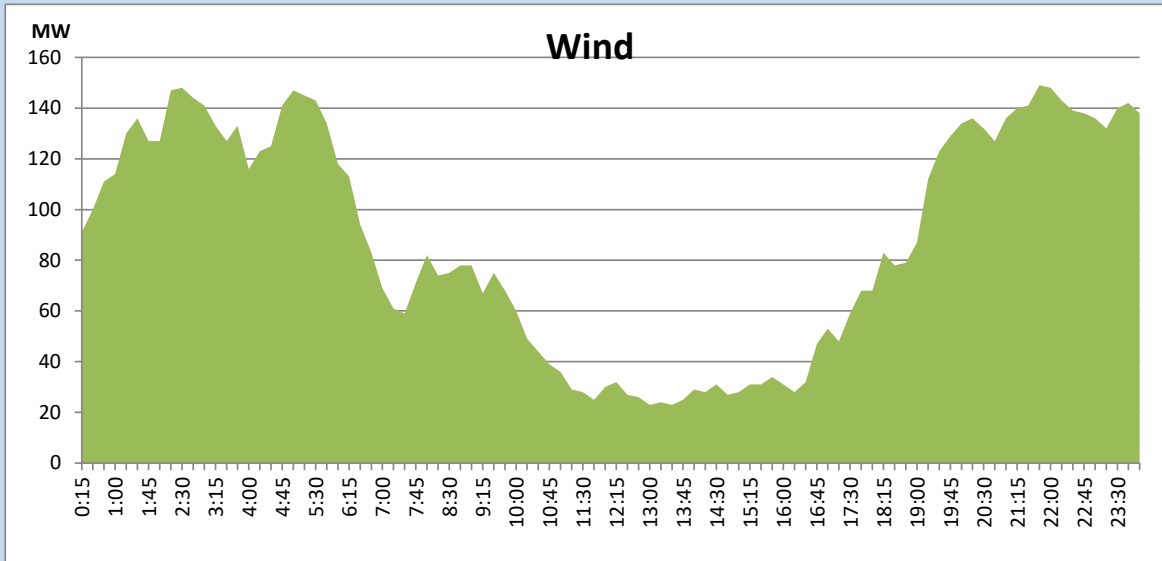
August 19, 2022



Wind Generation during the Previous day

August 19, 2022

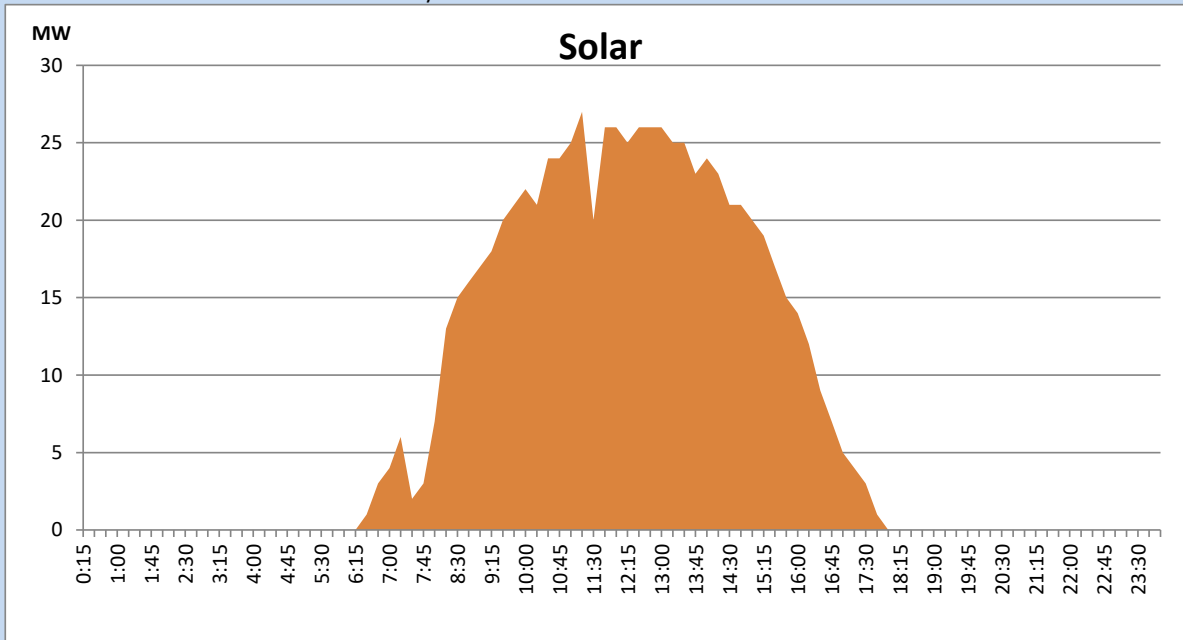
Based on Telemetered Power Stations only



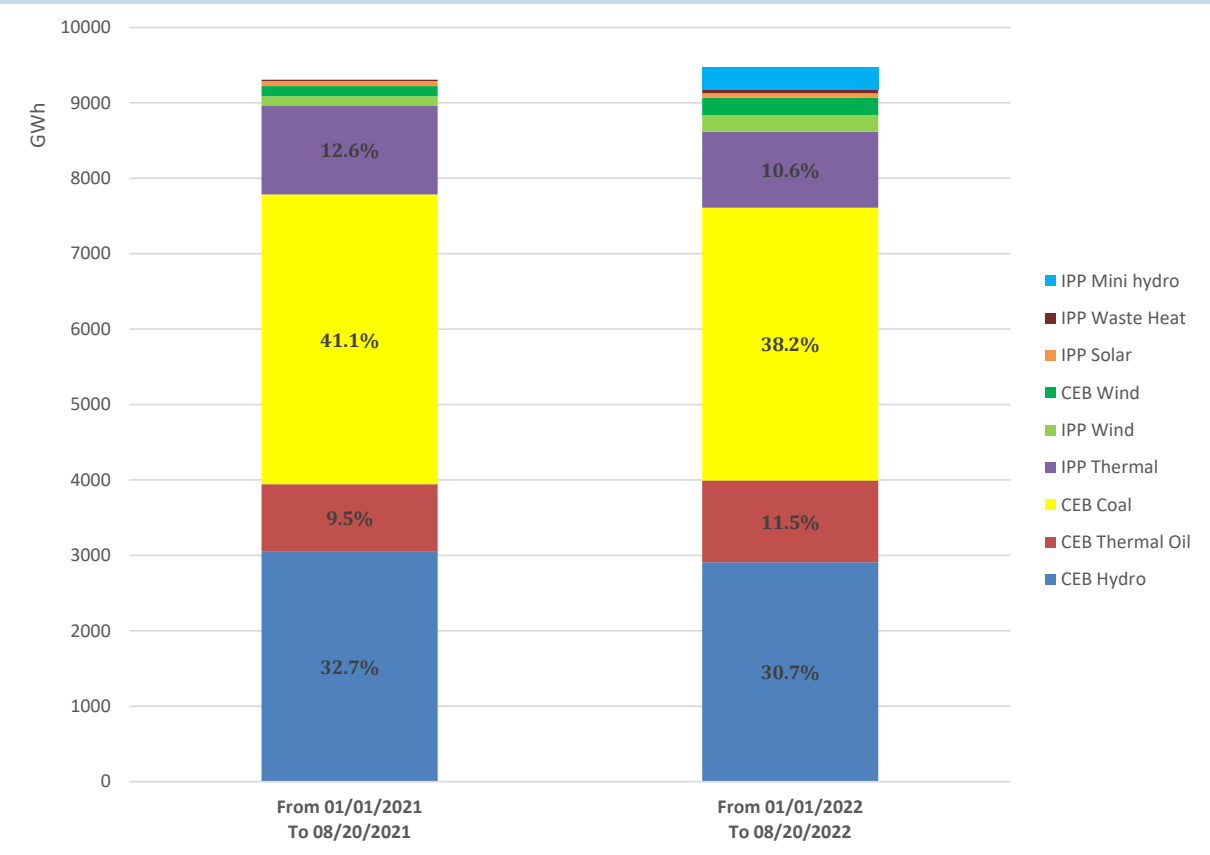
Solar Generation during the Previous day

August 19, 2022

Based on Telemetered Power Stations only



Cumulative Dispatch Comparison with Last Year



Thermal Plant Fuel types

| Power Station | Primary Fuel |
|--------------------------------|-------------------|
| CEB Thermal | |
| Sapugaskanda 1 | Heavy Fuel |
| Sapugaskanda 2 | Heavy Fuel |
| Kelanitissa Small Gas Turbines | Auto Diesel |
| GT 7 - Kelanitissa | Auto Diesel |
| Kelanitissa CCY | Naphtha or Diesel |
| Lakvijaya 1 | Coal |
| Lakvijaya 2 | Coal |
| Lakvijaya 3 | Coal |
| Uthuru Janani | Heavy Fuel |
| Barge CEB | Heavy Fuel |

| Power Station | Primary Fuel |
|----------------------|--------------------------|
| Private Thermal | |
| Sojitz - Kelanitissa | Auto Diesel |
| West Coast | Auto Diesel / Heavy Fuel |
| ACE Matara | Heavy Fuel |
| ACE Embilipitiya | Heavy Fuel |

Major Incidents during the day -as reported by CEB morning of

August 21, 2022

- 1) Rotational manual load shedding was carried out from 10:30 hrs to 12:10 hrs and 14:40 hrs to 22:00 hrs.
- 2) New Anuradhapura – Puttalam cct 02 tripped from both ends at 07:44hrs due to the operation of distance protection. The cct is yet to be restored.