

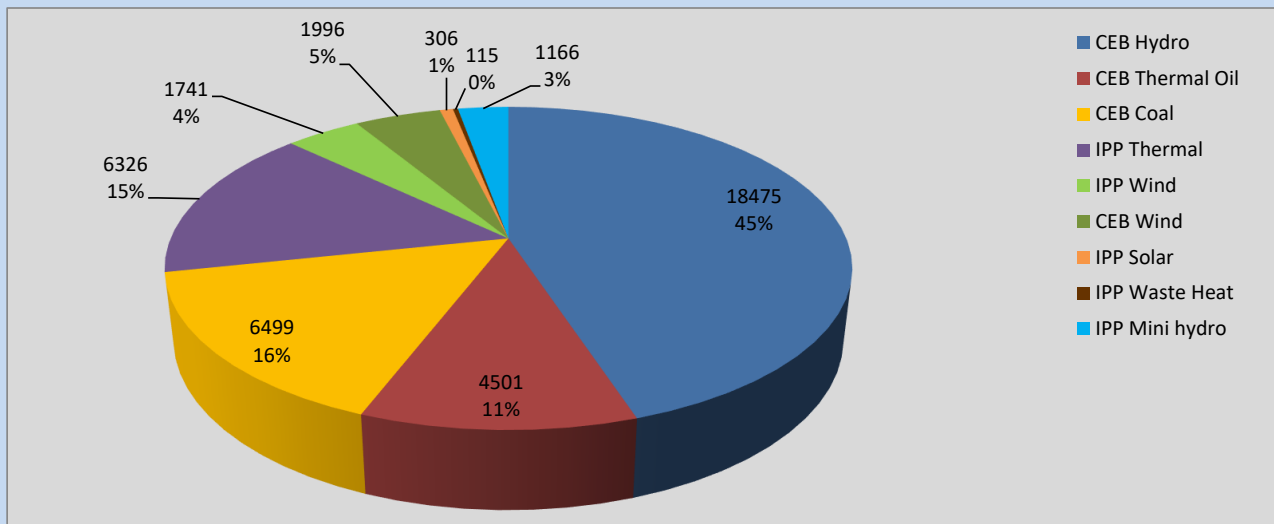
Generation and Reservoirs Statistics

August 18, 2022



PUBLIC UTILITIES COMMISSION OF SRI LANKA

Daily Generation Mix in MWh



Total Generation **41,125 MWh**

Note: Above data is excluding contribution from Roof Top Solar, 1MW Solar and certain Mini Hydro plants

Cumulative Dispatch

Note: Following data is Excluding contribution from Roof Top Solar, 1MW solar and Mini Hydro plants

For Current Month

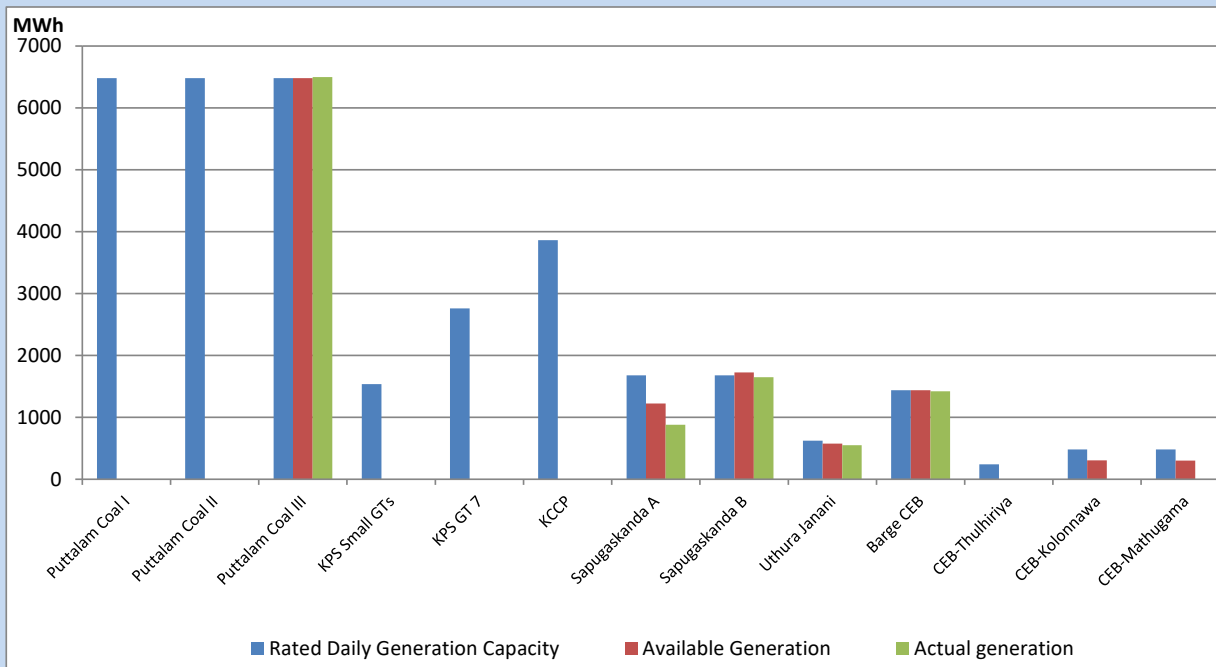
Category	Dispatch (GWh)	Percentage
CEB Hydro	370.26	52.90%
CEB Thermal Oil	23.12	3.30%
CEB Coal	181.46	25.92%
IPP Thermal	25.92	3.70%
SPP Wind	32.03	4.58%
CEB Wind	30.11	4.30%
SPP Solar	4.90	0.70%
SPP Solid Waste	2.39	0.34%
Mini Hydro	29.77	4.25%
Total	699.96	

For Current Year

Category	Dispatch (GWh)	Percentage
CEB Hydro	2,868.4	30.55%
CEB Thermal Oil	1,078.5	11.49%
CEB Coal	3,601.1	38.35%
IPP Thermal	998.4	10.63%
SPP Wind	216.0	2.30%
CEB Wind	231.4	2.46%
SPP Solar	58.9	0.63%
SPP Solid Waste	46.5	0.49%
Mini Hydro	290.8	3.10%
Total	9,389.6	

CEB owned Thermal Plant Dispatch

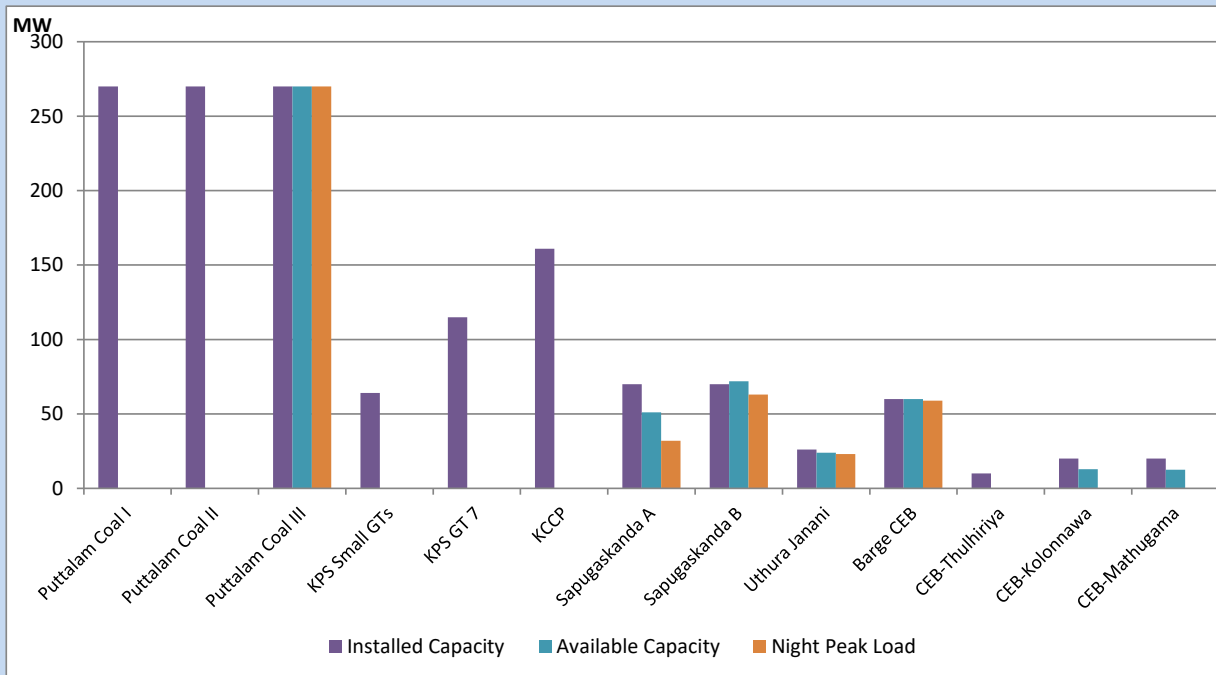
August 18, 2022



Available Generation is estimated based on plant availability at 6.00am on

August 19, 2022

CEB owned Thermal Plant Loading at the Night Peak



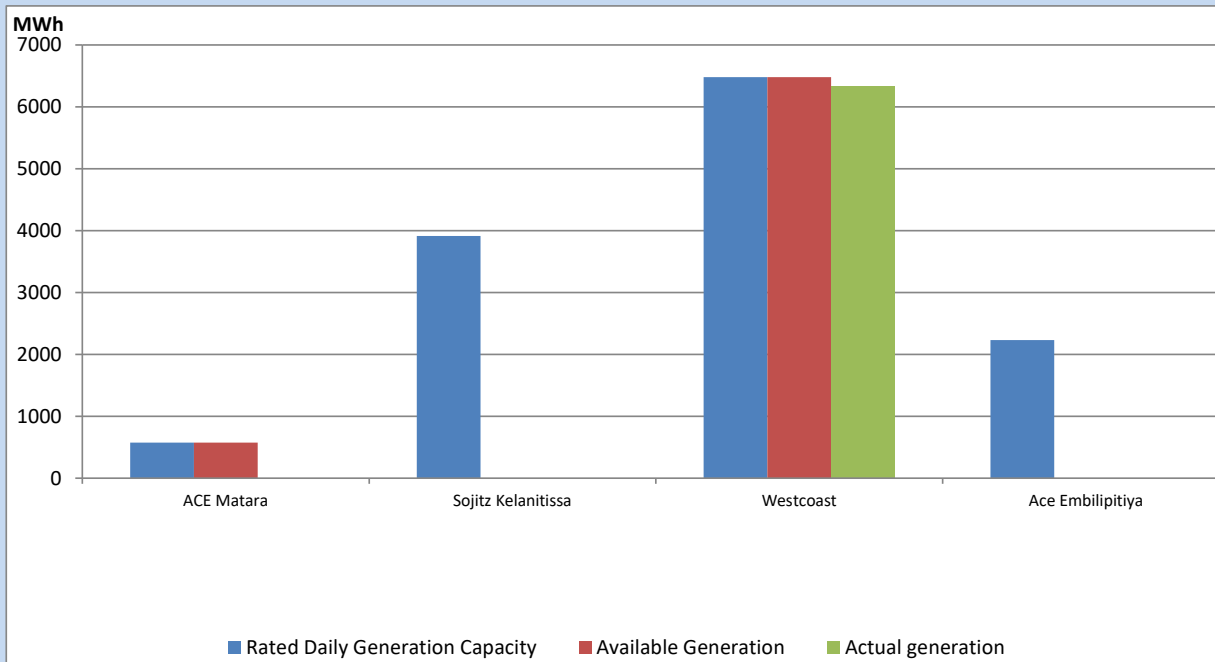
Note- Plant availability is recorded at 6.00 am on

August 19, 2022

IPP owned Thermal Plant Dispatch

August 18, 2022

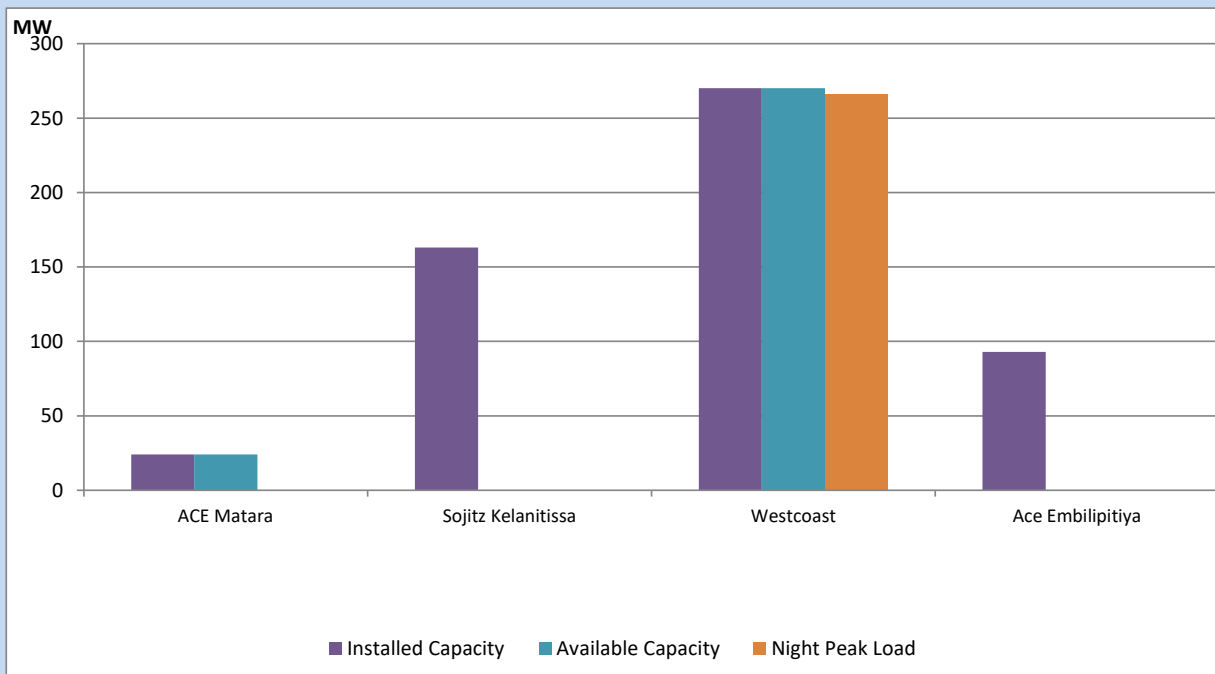
Asia Power, V Power Pallekale, Vpower Galle, V Power Horana, Vpower Hambantota, Vpower Valachchena and Altaqa Mahiyanganaya are not available due to expiration of PPAs



Available Generation is estimated based on plant availability at 6.00am on

August 19, 2022

IPP owned Thermal Plant Loading at the Night Peak

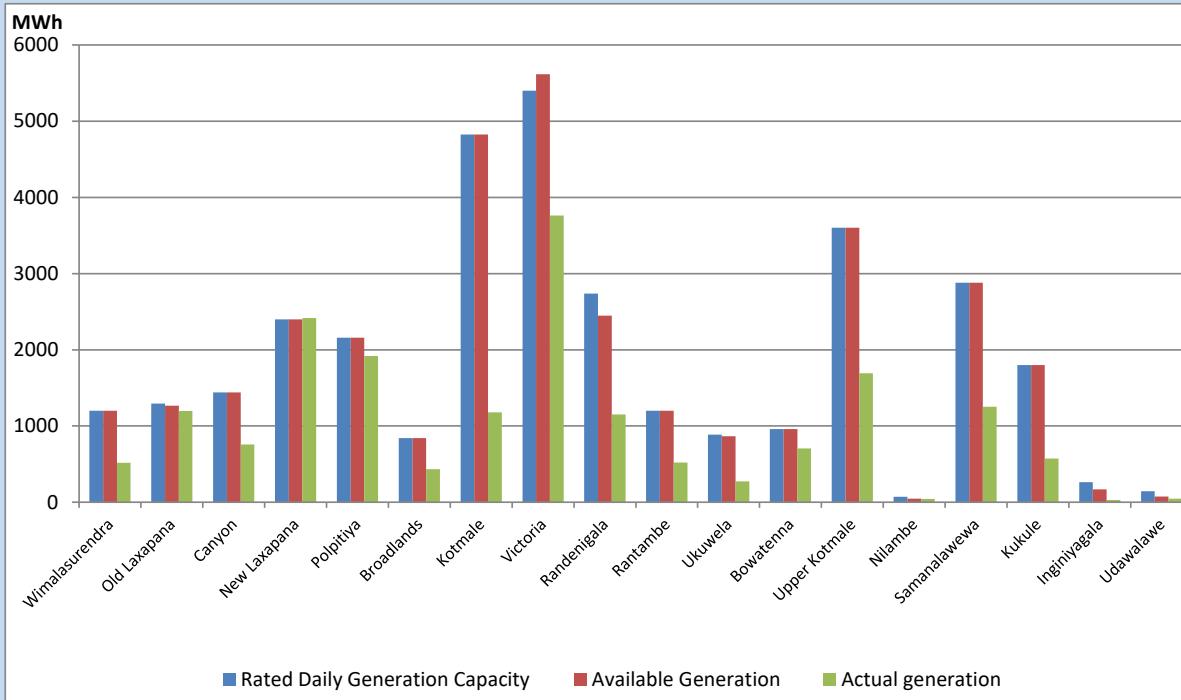


Note- Plant availability is recorded at 6.00 am on

August 19, 2022

Major Hydro Plant Dispatch

August 18, 2022

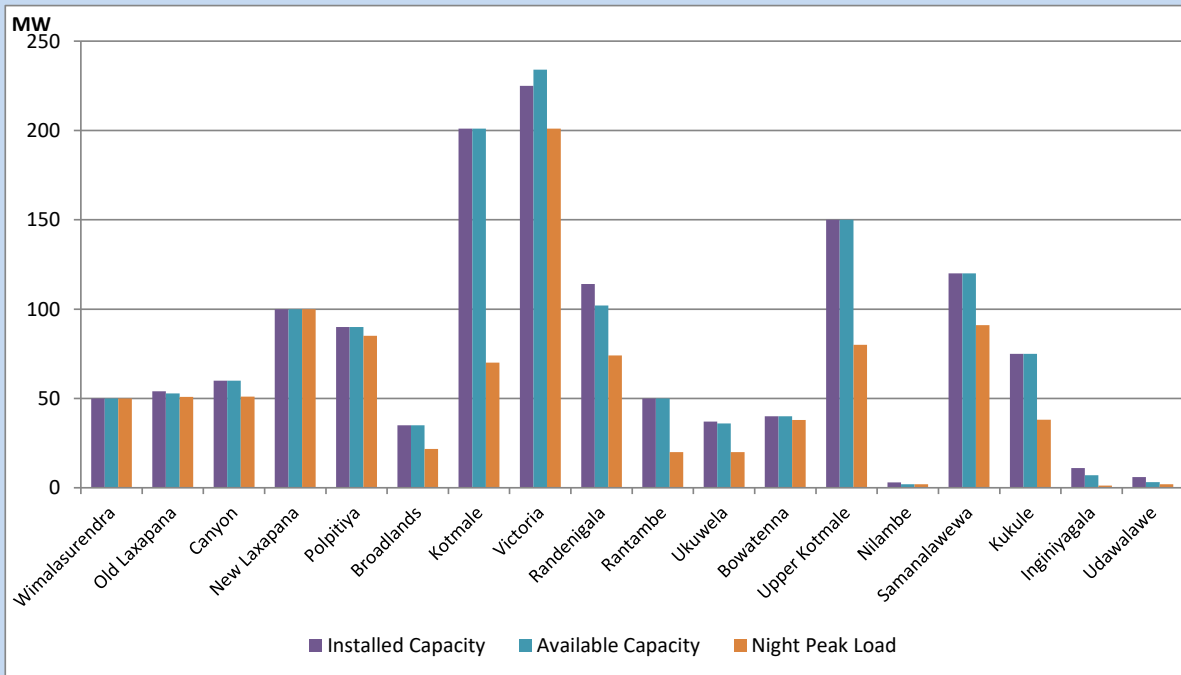


Available Generation is estimated based on plant availability at 6.00am on August 19, 2022
 Broadlands power plant is operating in the Commissioning Stage

August 19, 2022

Major Hydro Plant Loading at Night Peak

August 18, 2022



Note- Plant availability is recorded at 6.00 am on August 19, 2022
 Broadlands power plant is operating in the Commissioning Stage

Summary of Major Plant performance

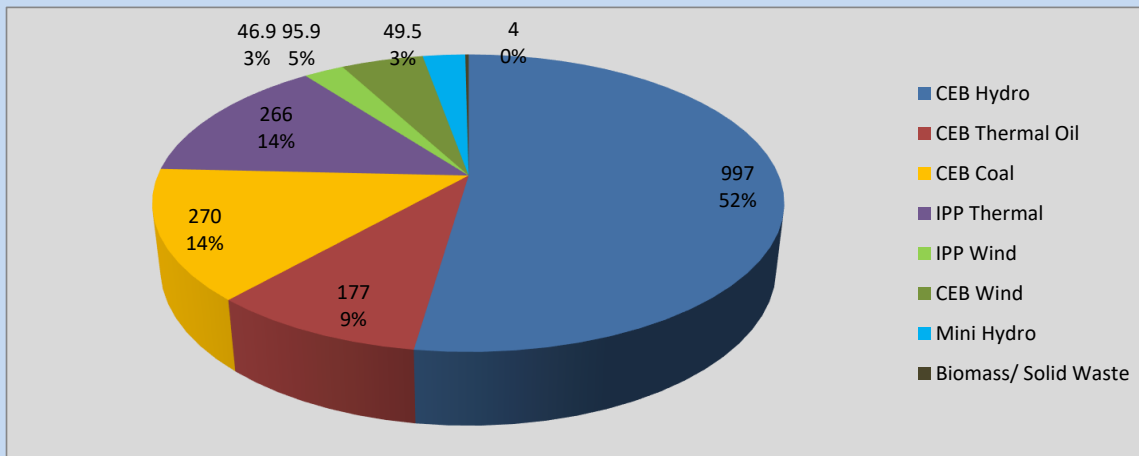
Plant	Installed Capacity	Plant Availability	Night peak Load	Plant Dispatch
	(MW)	(MW)	(MW)	(MWh)
Wimalasurendra	50	50	50	517
Old Laxapana	54	53	51	1,197
Canyon	60	60	51	759
New Laxapana	100	100	100	2,416
Polpitiya	90	90	85	1,917
Broadlands	35	35	22	435
Kotmale	201	201	70	1,180
Victoria	225	234	201	3,763
Randenigala	114	102	74	1,153
Rantambe	50	50	20	520
Ukuwela	37	36	20	272
Bowatenna	40	40	38	704
Upper Kotmale	150	150	80	1,693
Nilambe	3	2	2	44
Samanalawewa	120	120	91	1,254
Kukule	75	75	38	573
Inginiyagala	11	7	1	30
Udawalawe	6	3	2	48
Puttalam Coal I	270	0	0	0
Puttalam Coal II	270	0	0	0
Puttalam Coal III	270	270	270	6,499
KPS Small GTs	64	0	0	0
KPS GT 7	115	0	0	0
KCCP	161	0	0	0
Sapugaskanda A	70	51	32	882
Sapugaskanda B	70	72	63	1,648
Uthura Janani	26	24	23	551
Barge CEB	60	60	59	1,420
CEB-Thulhiriya	10	0	0	0
CEB-Kolonnawa	20	13	0	0
CEB-Mathugama	20	13	0	0
ACE Matara	24	24	0	0
Sojitz Kelanitissa	163	0	0	0
West Coast	270	270	266	6,326
ACE Embilipitiya	93	0	0	0
Total	3,397	2,204	1,905	41,125

Plant availability is the availability recorded at 6 am on

August 19, 2022

Contribution to the Night Peak in MW

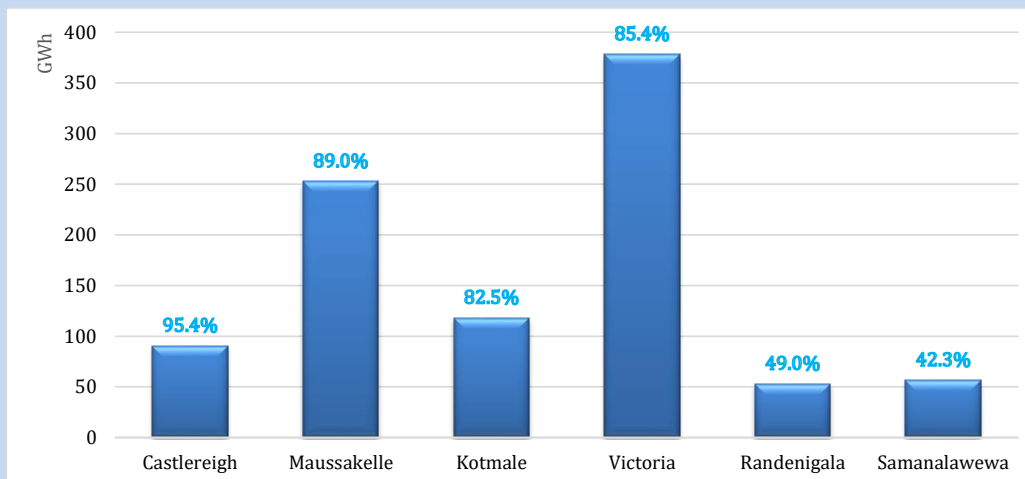
August 18, 2022



Night Peak*	1,906.3 MW
Day Peak	1,926.3 MW
Minimum Demand	1,369.9 MW

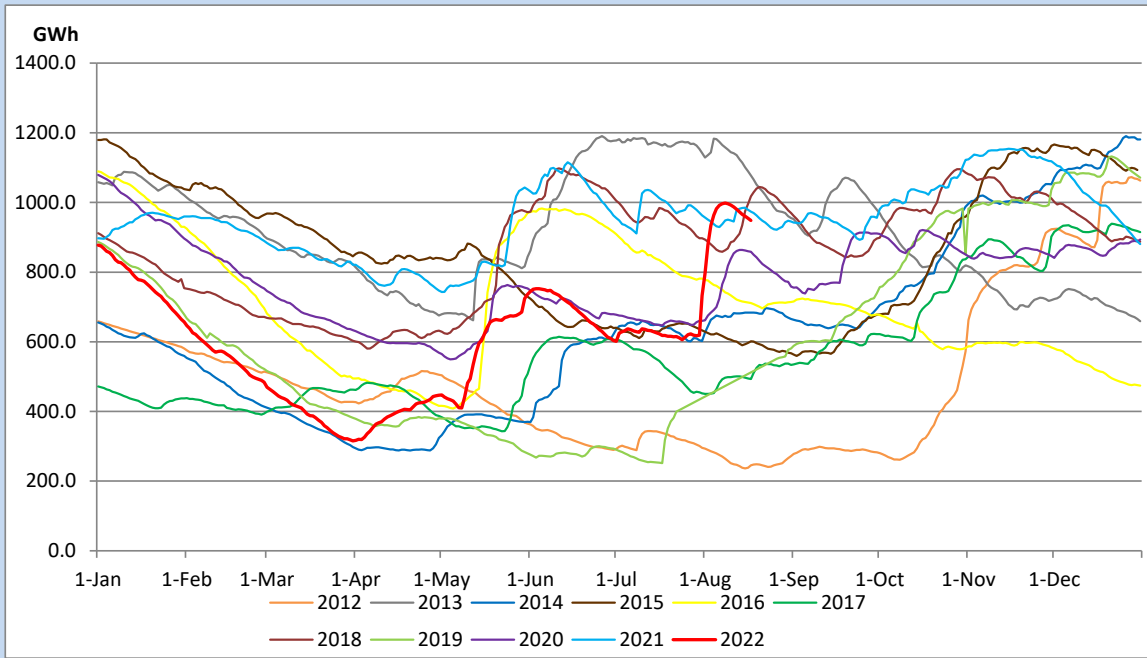
Above figures are excluding contribution from Roof Top Solar, 1MW solar, certain Wind plants and Mini Hydro plants

Reservoir Levels - as at 06.00 Hr on August 19, 2022

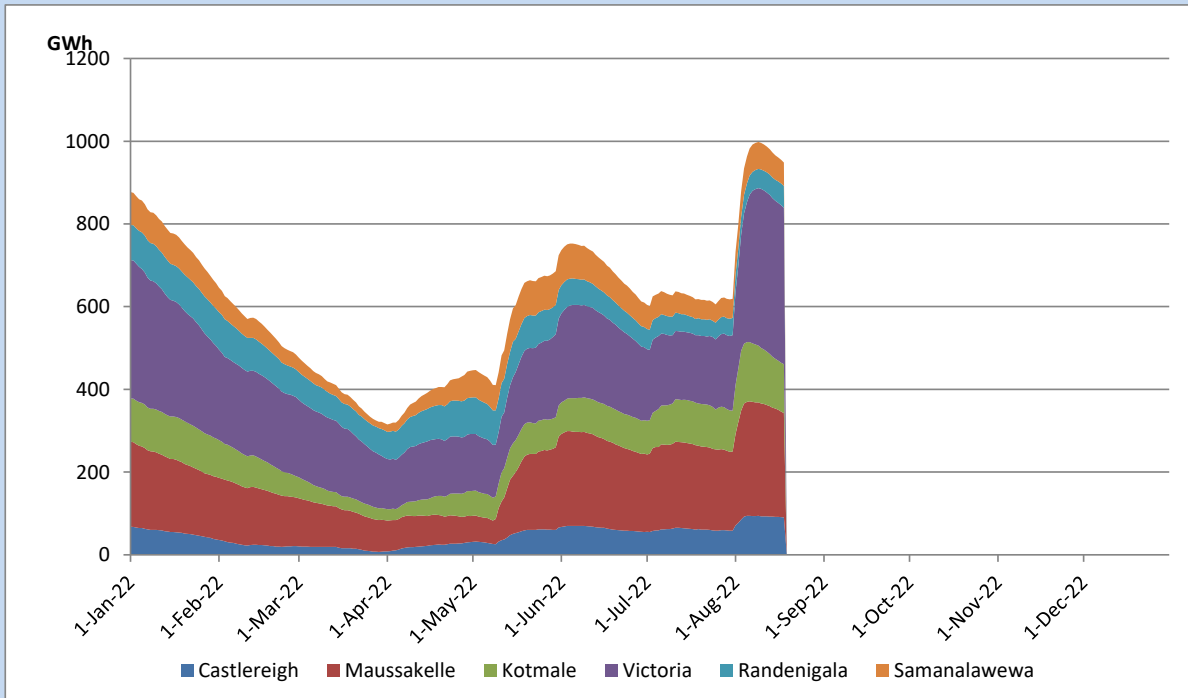


Total Reservoir Level	948.3 GWh
% of Total capacity	78.7%

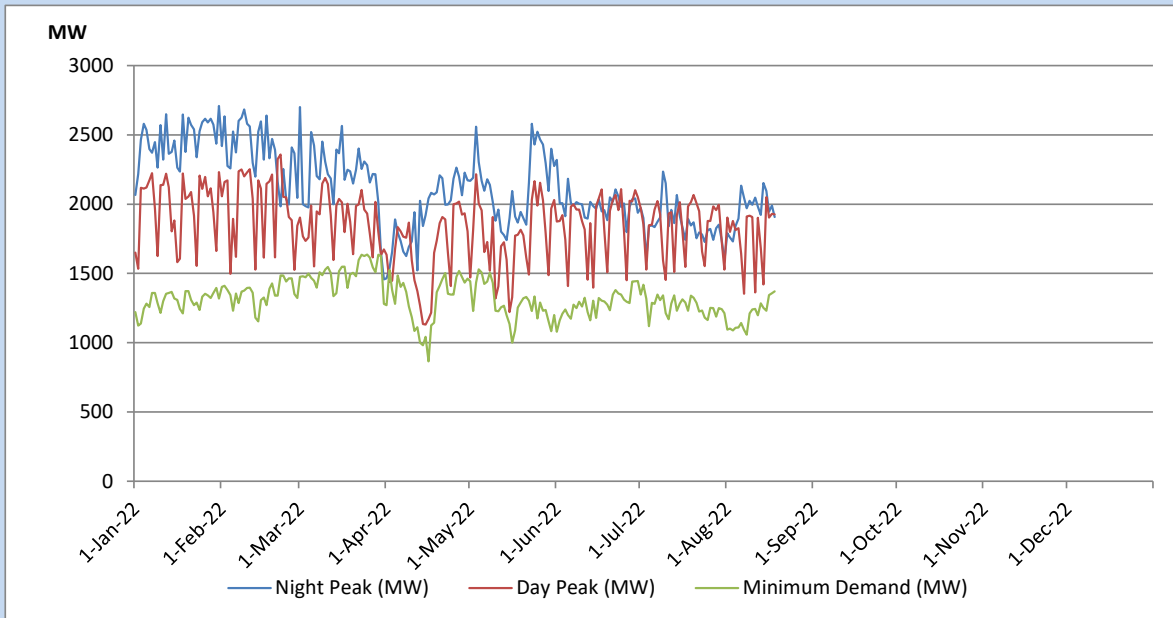
Comparison of Total Reservoir Storage Levels with Past Years



Variation of Major Hydro Reservoir Levels in the current year (GWh)



Variation of Demand during the current year

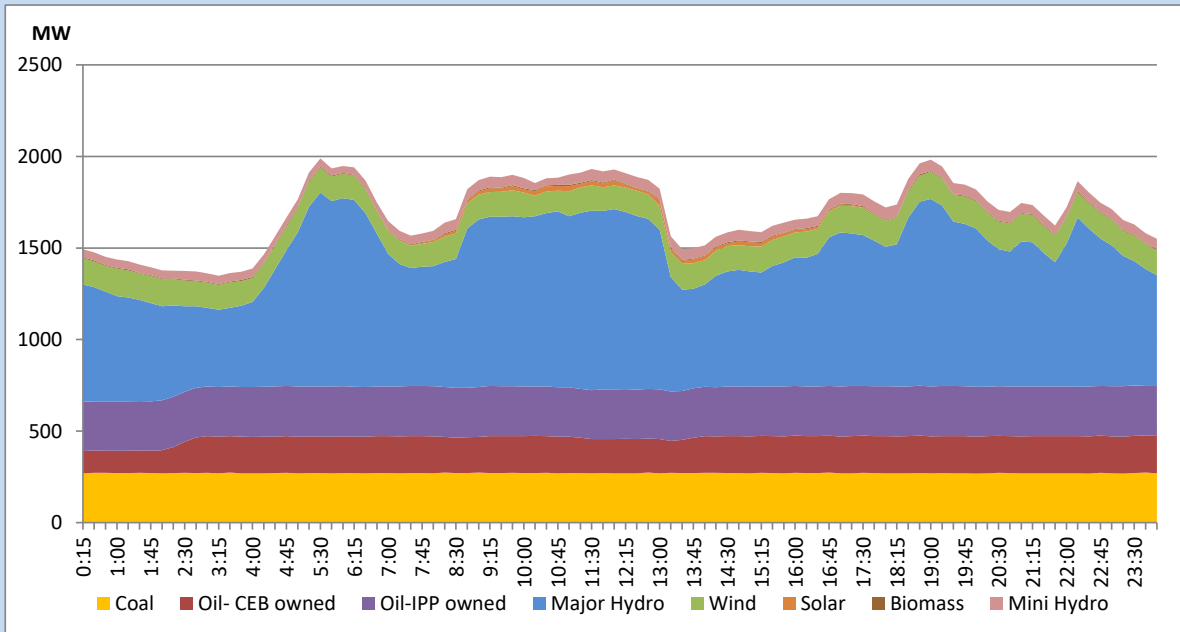


The above figures are excluding contribution from Roof Top Solar, 1MW solar, certain Wind plants and Mini Hydro plants

Daily Load Curve of the Previous day

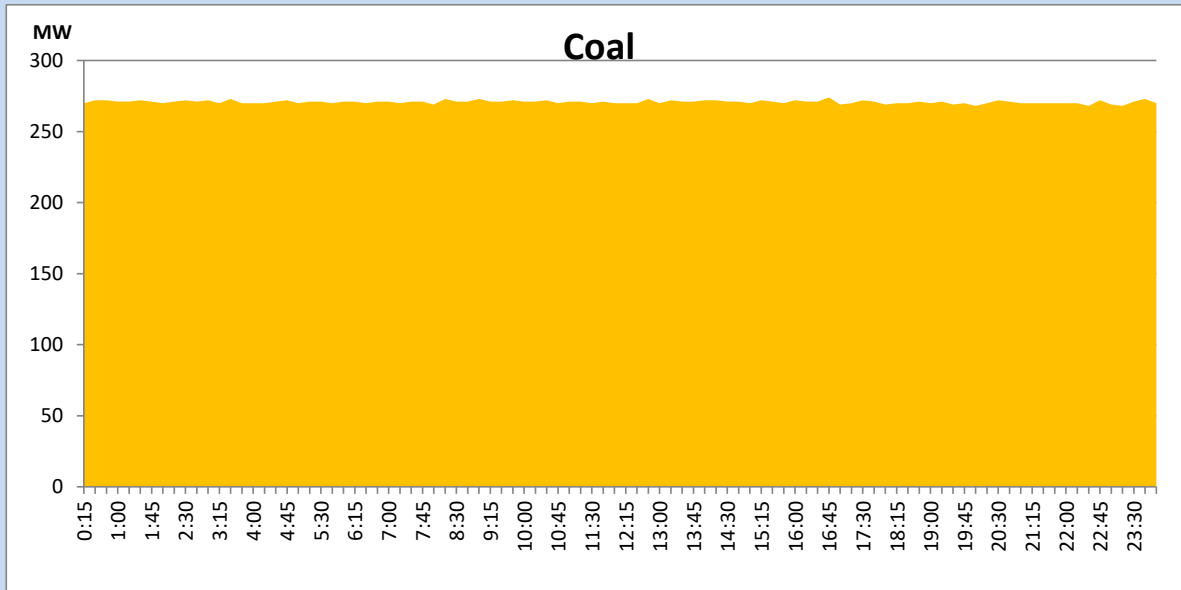
August 17, 2022

Solar and wind data is based on Telemetered Power Stations only



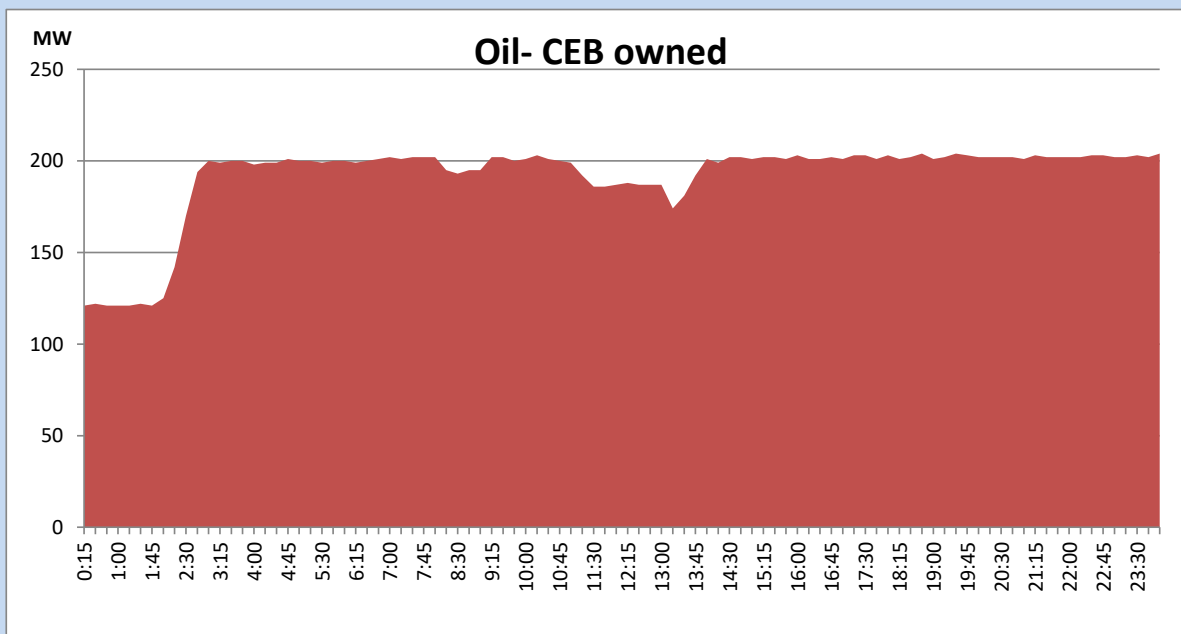
Coal Generation during the Previous day

August 17, 2022



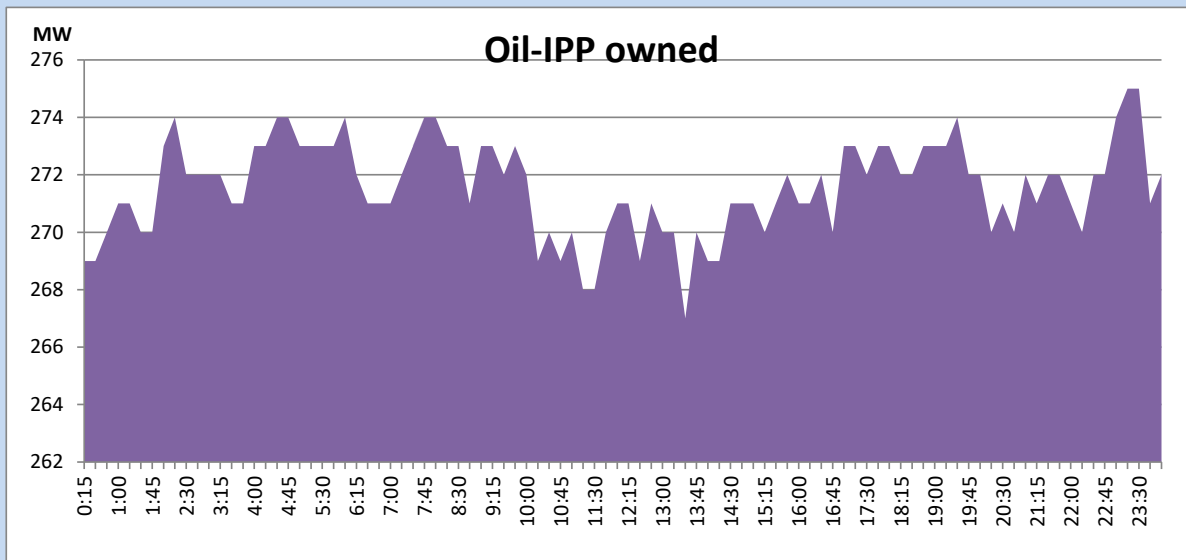
CEB Oil Plant Generation during the Previous day

August 17, 2022



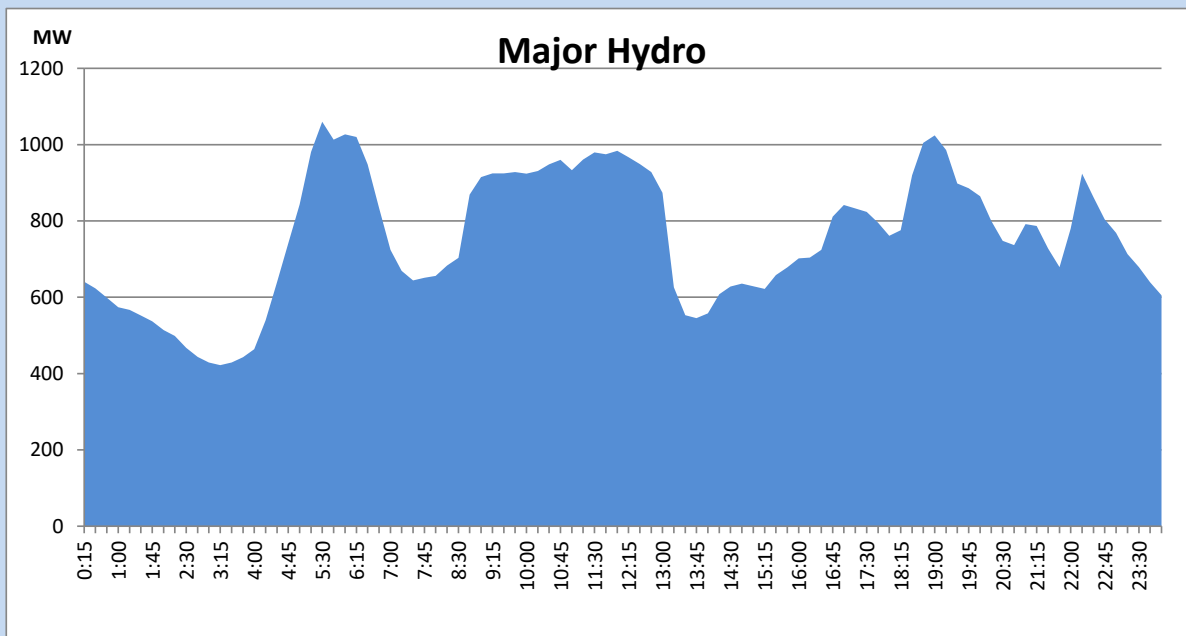
IPP Oil Plant Generation during the Previous day

August 17, 2022



Major Hydro Generation during the Previous day

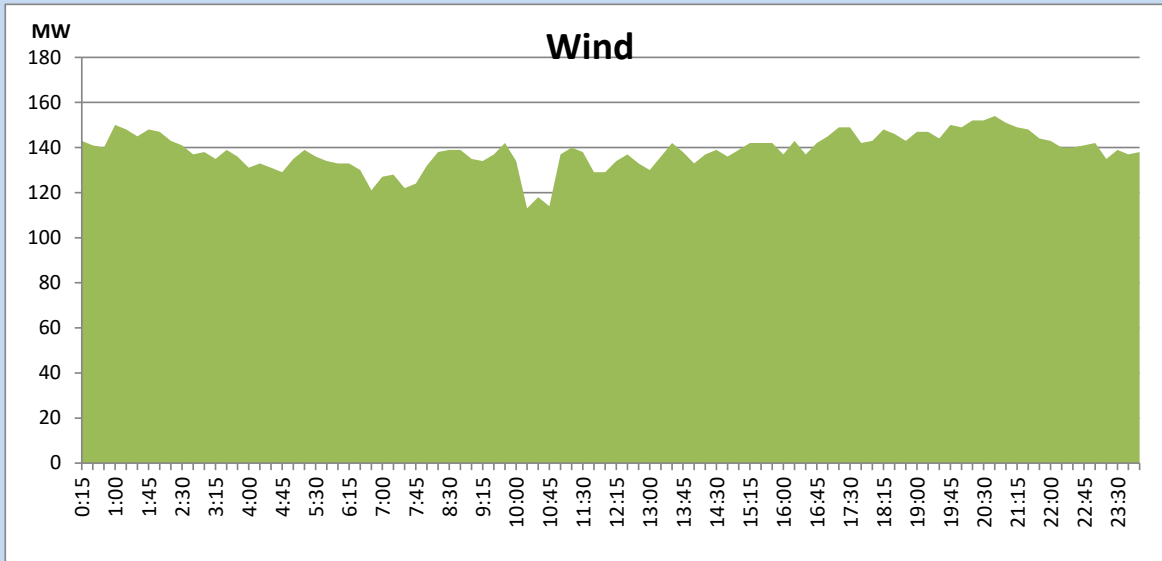
August 17, 2022



Wind Generation during the Previous day

August 17, 2022

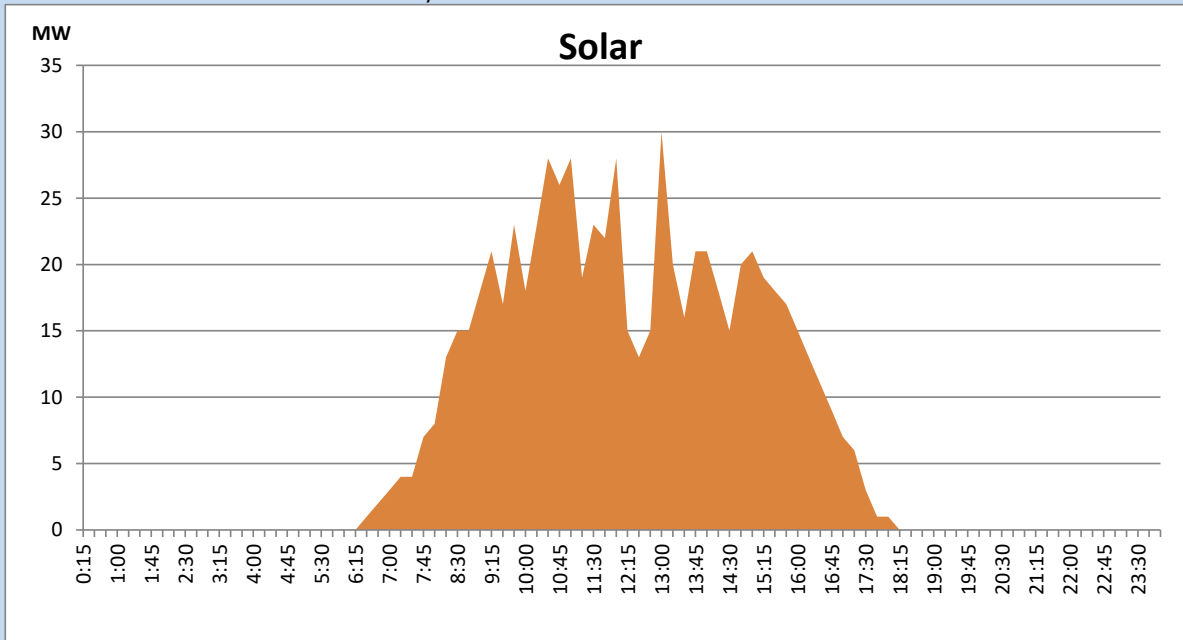
Based on Telemetered Power Stations only



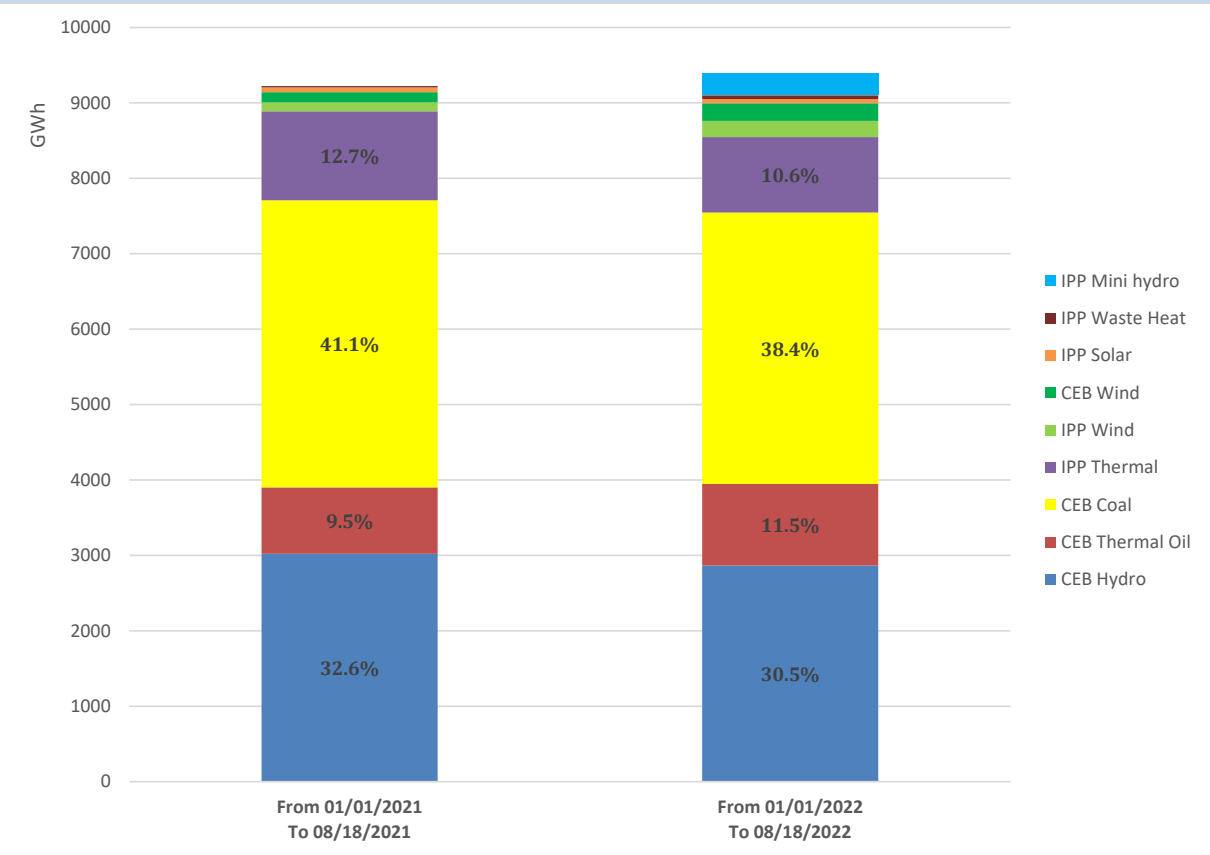
Solar Generation during the Previous day

August 17, 2022

Based on Telemetered Power Stations only



Cumulative Dispatch Comparison with Last Year



Thermal Plant Fuel types

Power Station	Primary Fuel
CEB Thermal	
Sapugaskanda 1	Heavy Fuel
Sapugaskanda 2	Heavy Fuel
Kelanitissa Small Gas Turbines	Auto Diesel
GT 7 - Kelanitissa	Auto Diesel
Kelanitissa CCY	Naphtha or Diesel
Lakvijaya 1	Coal
Lakvijaya 2	Coal
Lakvijaya 3	Coal
Uthuru Janani	Heavy Fuel
Barge CEB	Heavy Fuel

Power Station	Primary Fuel
Private Thermal	
Sojitz - Kelanitissa	Auto Diesel
West Coast	Auto Diesel / Heavy Fuel
ACE Matara	Heavy Fuel
ACE Embilipitiya	Heavy Fuel

Major Incidents during the day -as reported by CEB morning of

August 19, 2022

- 1) Rotational manual load shedding was carried out from 05:30 hrs to 08:30 hrs and 13:00 hrs to 22:00 hrs.
- 2) Galle - Deniyaya cct tripped from both ends at 01:21hrs (19/08/2022) with operation of distance protection and failed its first attempt to be restored from Galle end at 01:28hrs. Galle - Deniyaya cct is yet to be restored.