

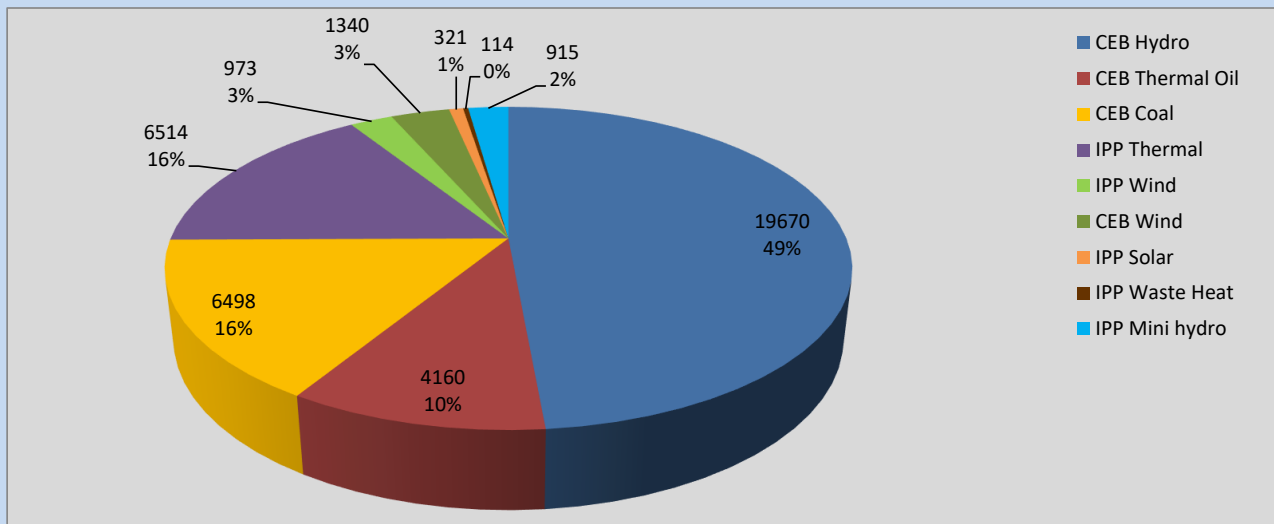
# Generation and Reservoirs Statistics

August 16, 2022



PUBLIC UTILITIES COMMISSION OF SRI LANKA

## Daily Generation Mix in MWh



**Total Generation** **40,505 MWh**

Note: Above data is excluding contribution from Roof Top Solar, 1MW Solar and certain Mini Hydro plants

## Cumulative Dispatch

Note: Following data is Excluding contribution from Roof Top Solar, 1MW solar and Mini Hydro plants

### For Current Month

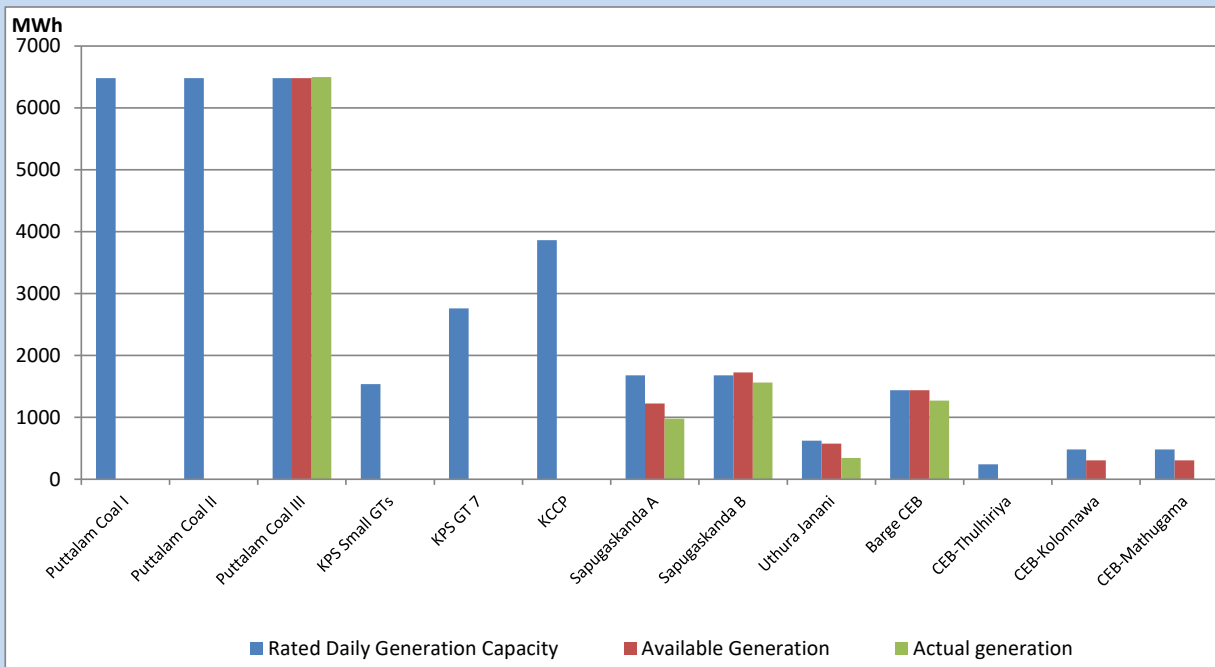
Category	Dispatch (GWh)	Percentage
CEB Hydro	333.47	54.00%
CEB Thermal Oil	14.03	2.27%
CEB Coal	168.45	27.28%
IPP Thermal	13.21	2.14%
SPP Wind	28.50	4.62%
CEB Wind	25.85	4.19%
SPP Solar	4.35	0.70%
SPP Solid Waste	2.16	0.35%
Mini Hydro	27.47	4.45%
<b>Total</b>	<b>617.49</b>	

### For Current Year

Category	Dispatch (GWh)	Percentage
CEB Hydro	2,831.6	30.42%
CEB Thermal Oil	1,069.4	11.49%
CEB Coal	3,588.1	38.55%
IPP Thermal	985.7	10.59%
SPP Wind	212.5	2.28%
CEB Wind	227.1	2.44%
SPP Solar	58.3	0.63%
SPP Solid Waste	46.2	0.50%
Mini Hydro	288.5	3.10%
<b>Total</b>	<b>9,307.1</b>	

## CEB owned Thermal Plant Dispatch

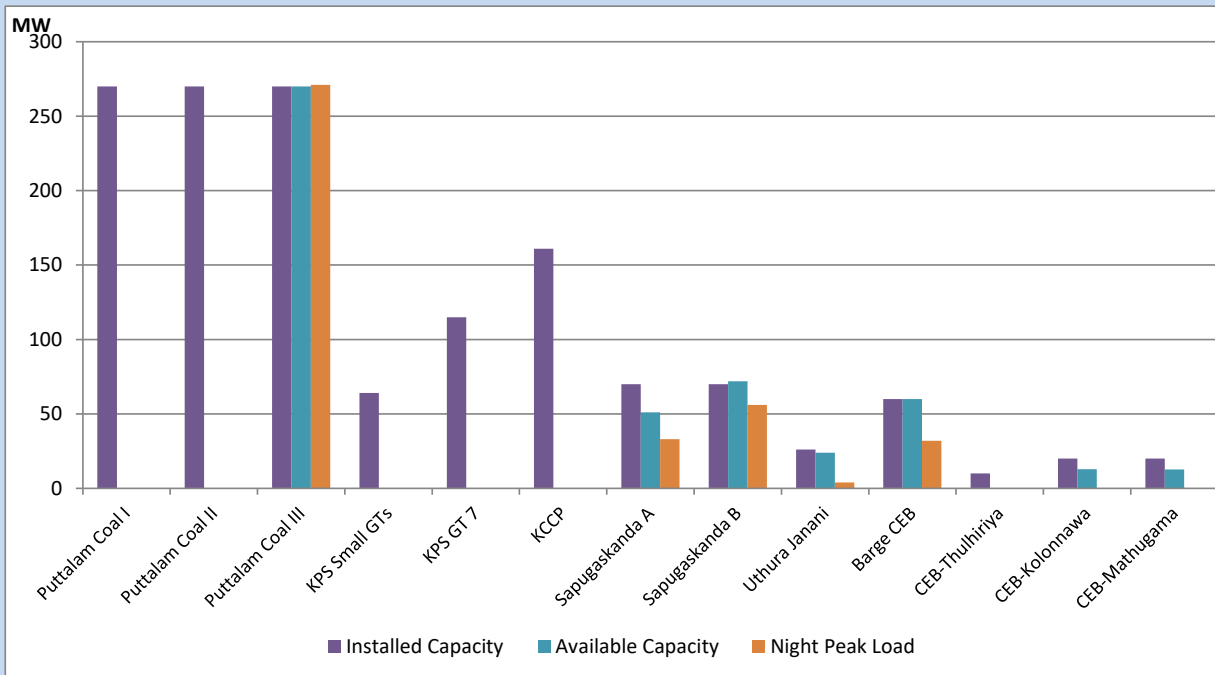
August 16, 2022



Available Generation is estimated based on plant availability at 6.00am on

August 17, 2022

## CEB owned Thermal Plant Loading at the Night Peak



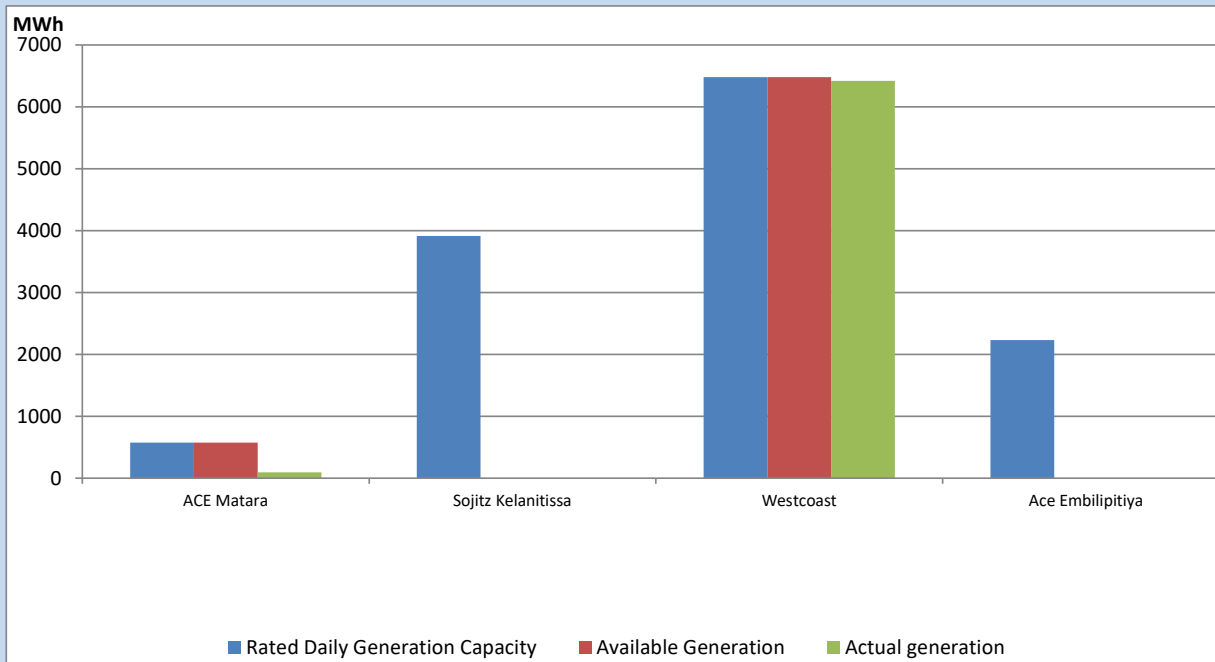
Note- Plant availability is recorded at 6.00 am on

August 17, 2022

## IPP owned Thermal Plant Dispatch

August 16, 2022

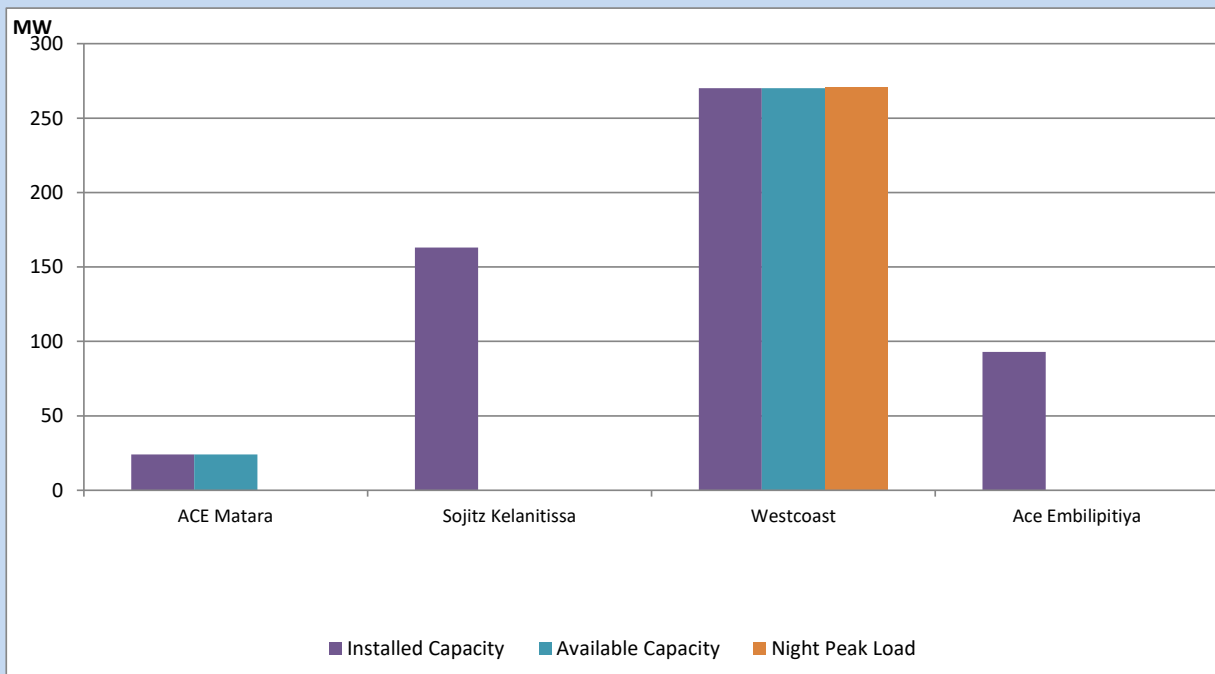
Asia Power, V Power Pallekale, Vpower Galle, V Power Horana, Vpower Hambantota, Vpower Valachchena and Altaqa Mahiyanganaya are not available due to expiration of PPAs



Available Generation is estimated based on plant availability at 6.00am on

August 17, 2022

## IPP owned Thermal Plant Loading at the Night Peak

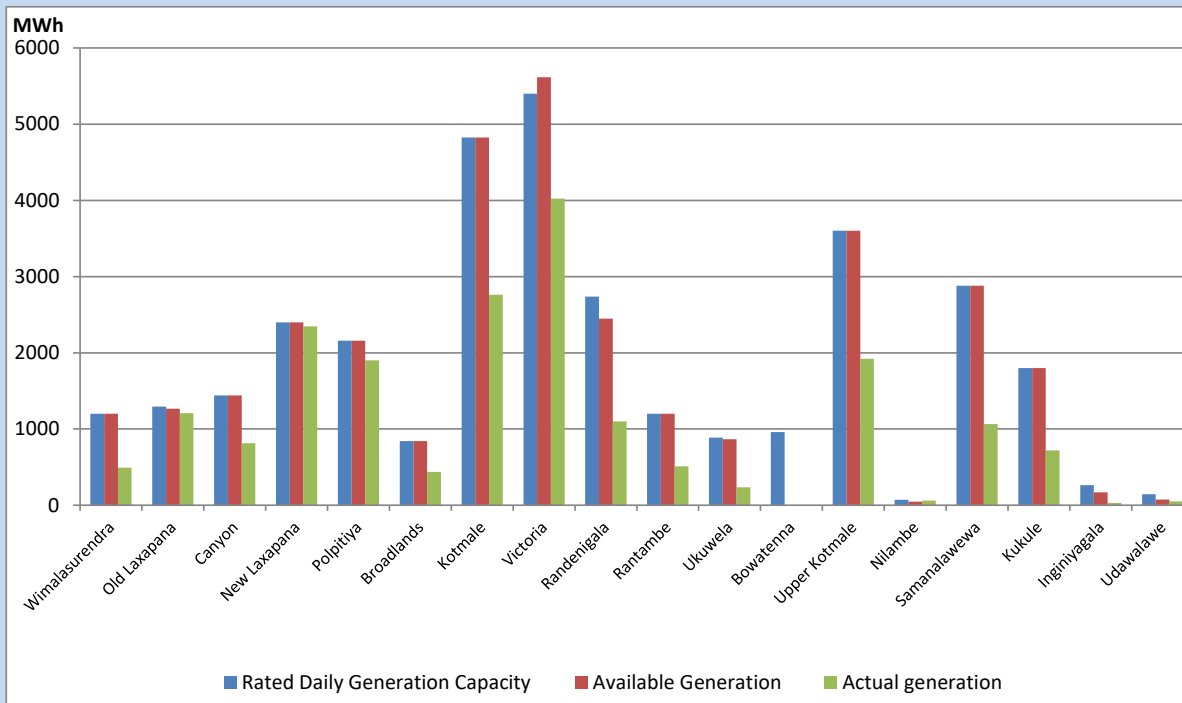


Note- Plant availability is recorded at 6.00 am on

August 17, 2022

## Major Hydro Plant Dispatch

August 16, 2022

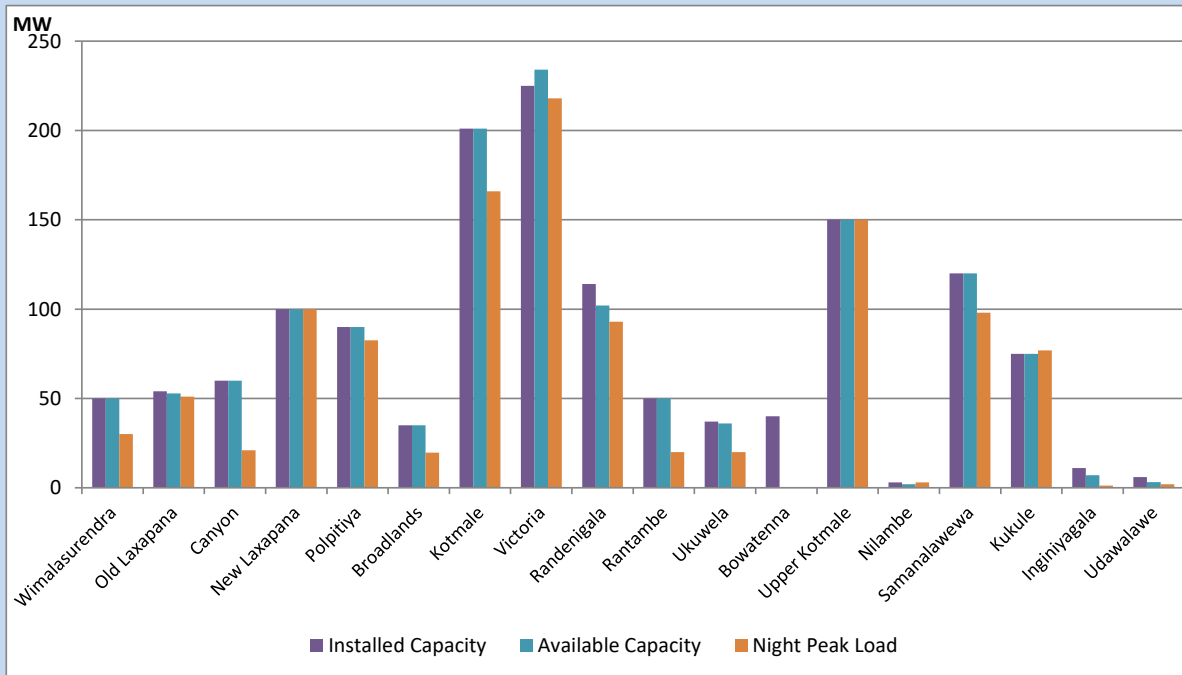


Available Generation is estimated based on plant availability at 6.00am on August 17, 2022  
 Broadlands power plant is operating in the Commissioning Stage

August 17, 2022

## Major Hydro Plant Loading at Night Peak

August 16, 2022



Note- Plant availability is recorded at 6.00 am on August 17, 2022  
 Broadlands power plant is operating in the Commissioning Stage

## Summary of Major Plant performance

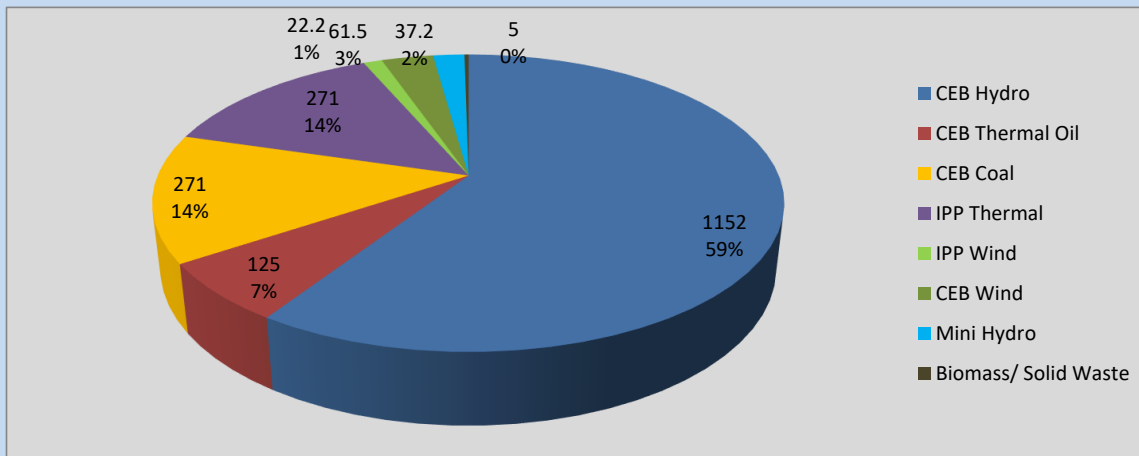
Plant	Installed Capacity	Plant Availability	Night peak Load	Plant Dispatch
	(MW)	(MW)	(MW)	(MWh)
Wimalasurendra	50	50	30	493
Old Laxapana	54	53	51	1,208
Canyon	60	60	21	815
New Laxapana	100	100	100	2,346
Polpitiya	90	90	83	1,901
Broadlands	35	35	20	436
Kotmale	201	201	166	2,760
Victoria	225	234	218	4,023
Randenigala	114	102	93	1,098
Rantambe	50	50	20	510
Ukuwela	37	36	20	236
Bowatenna	40	0	0	0
Upper Kotmale	150	150	150	1,922
Nilambe	3	2	3	59
Samanalawewa	120	120	98	1,065
Kukule	75	75	77	718
Inginiyagala	11	7	1	30
Udawalawe	6	3	2	50
Puttalam Coal I	270	0	0	0
Puttalam Coal II	270	0	0	0
Puttalam Coal III	270	270	271	6,498
KPS Small GTs	64	0	0	0
KPS GT 7	115	0	0	0
KCCP	161	0	0	0
Sapugaskanda A	70	51	33	981
Sapugaskanda B	70	72	56	1,563
Uthura Janani	26	24	4	345
Barge CEB	60	60	32	1,271
CEB-Thulhiriya	10	0	0	0
CEB-Kolonnawa	20	13	0	0
CEB-Mathugama	20	13	0	0
ACE Matara	24	24	0	93
Sojitz Kelanitissa	163	0	0	0
West Coast	270	270	271	6,421
ACE Embilipitiya	93	0	0	0
<b>Total</b>	<b>3,397</b>	<b>2,164</b>	<b>1,945</b>	<b>40,505</b>

Plant availability is the availability recorded at 6 am on

August 17, 2022

## Contribution to the Night Peak in MW

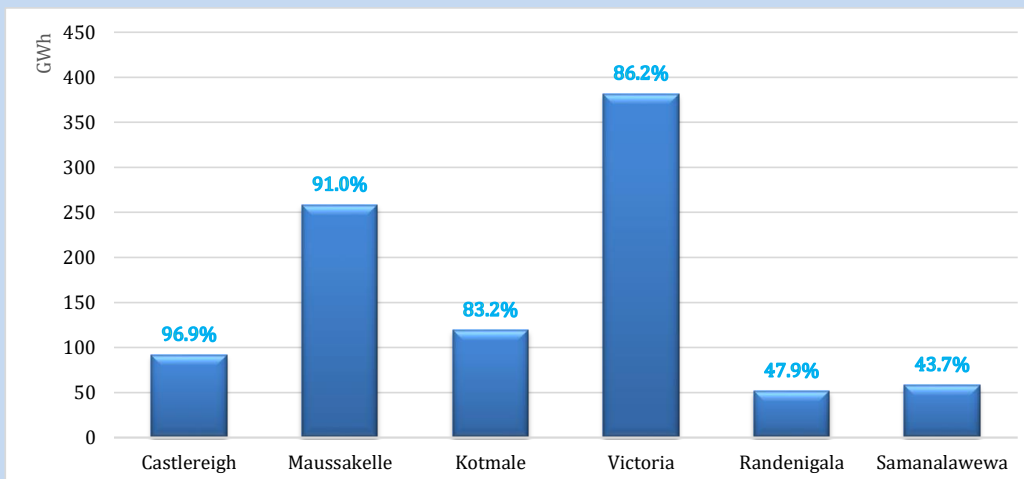
August 16, 2022



Night Peak*	1,945.2 MW
Day Peak	1,902.9 MW
Minimum Demand	1,344.2 MW

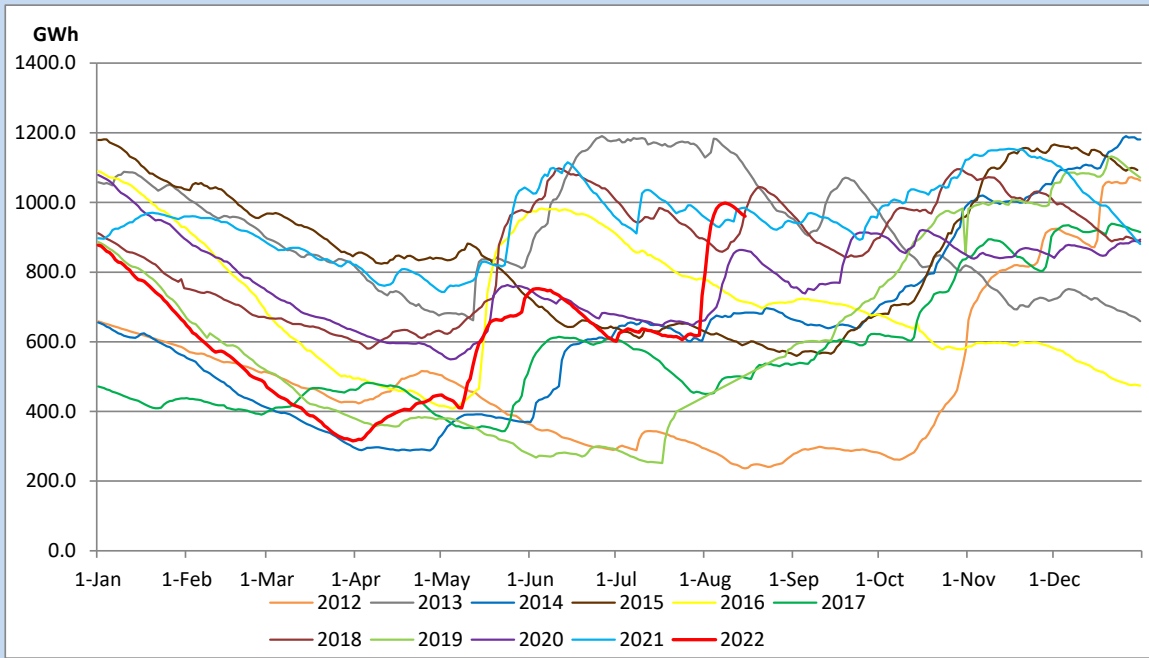
Above figures are excluding contribution from Roof Top Solar, 1MW solar, certain Wind plants and Mini Hydro plants

## Reservoir Levels - as at 06.00 Hr on August 17, 2022

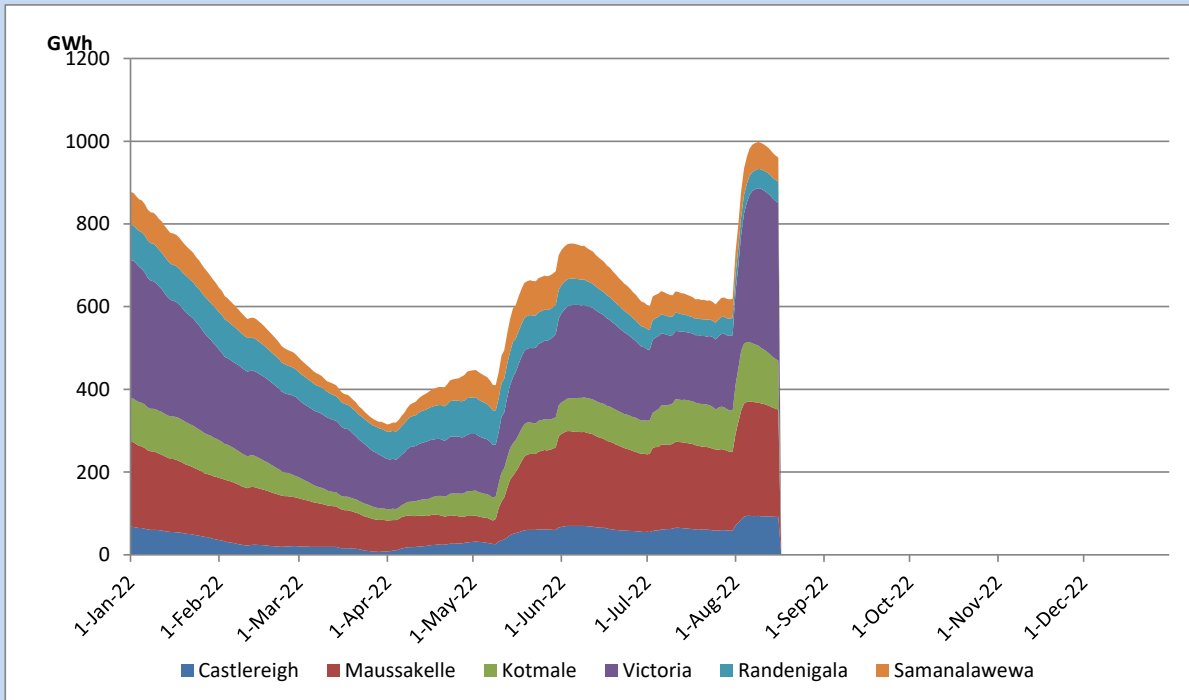


Total Reservoir Level	960.7 GWh
% of Total capacity	79.7%

## Comparison of Total Reservoir Storage Levels with Past Years

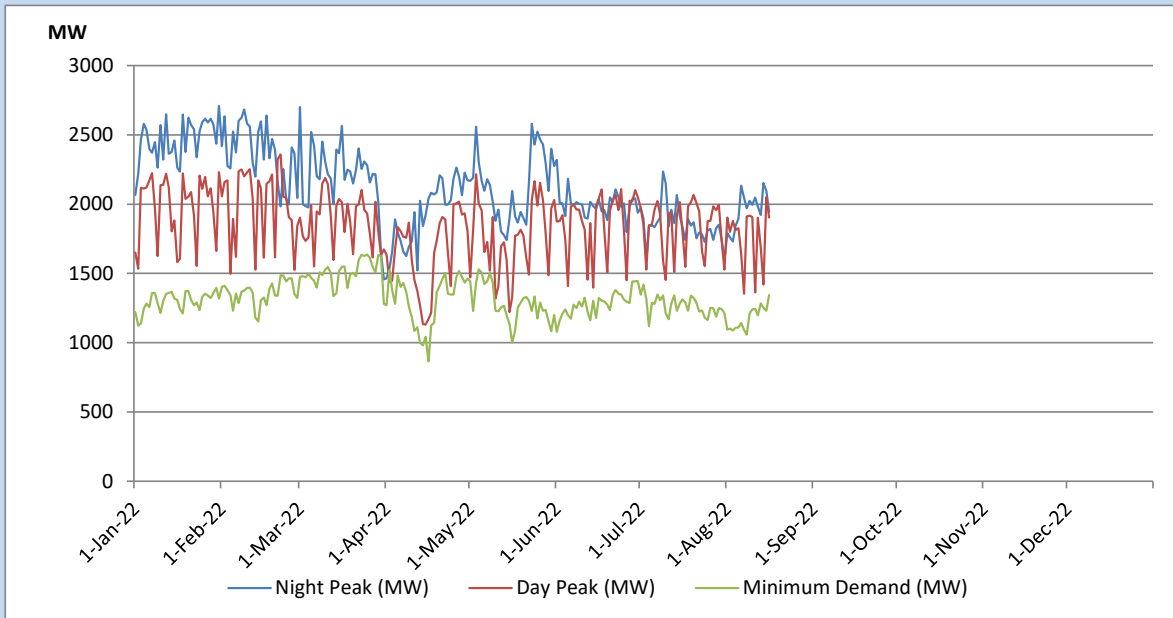


## Variation of Major Hydro Reservoir Levels in the current year (GWh)





## Variation of Demand during the current year

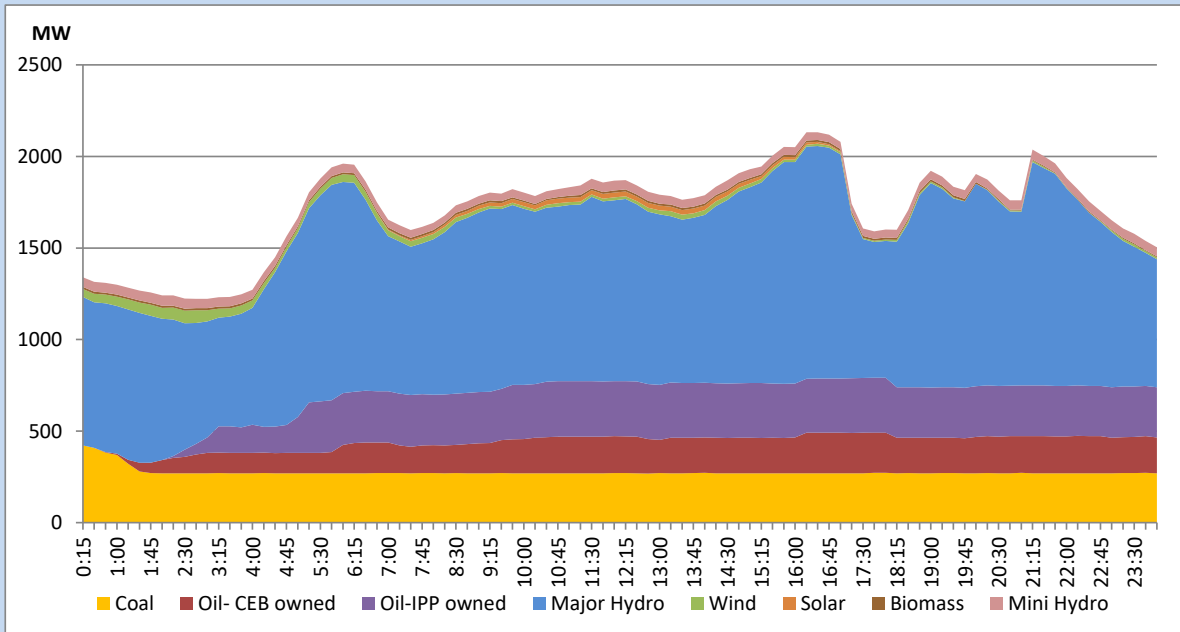


The above figures are excluding contribution from Roof Top Solar, 1MW solar, certain Wind plants and Mini Hydro plants

## Daily Load Curve of the Previous day

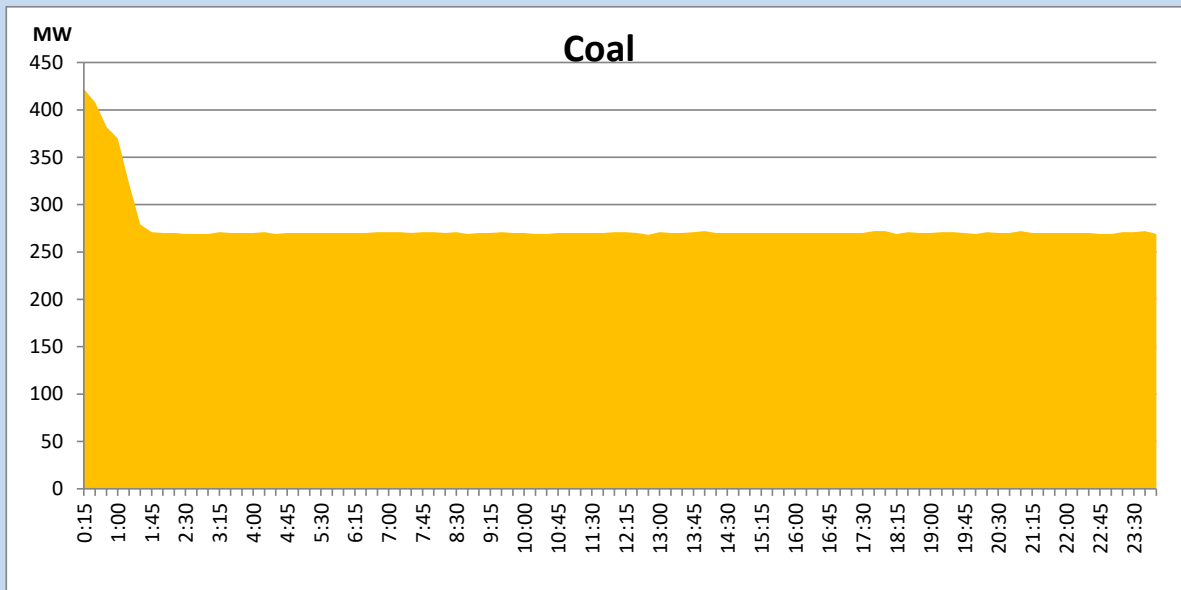
August 15, 2022

Solar and wind data is based on Telemetered Power Stations only



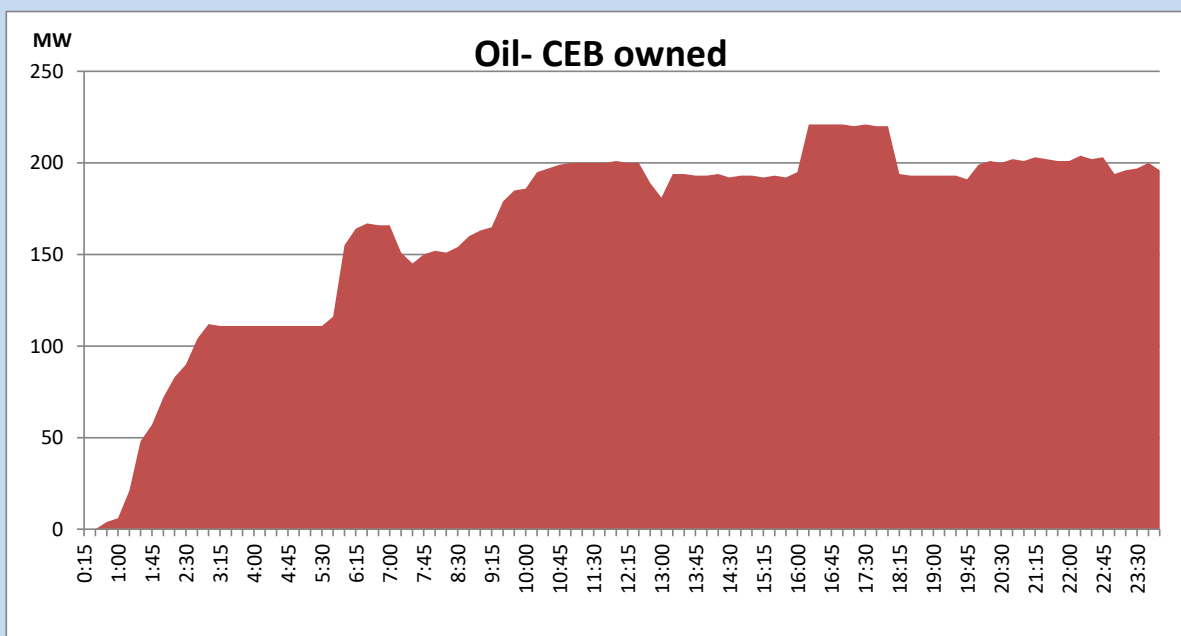
## Coal Generation during the Previous day

August 15, 2022



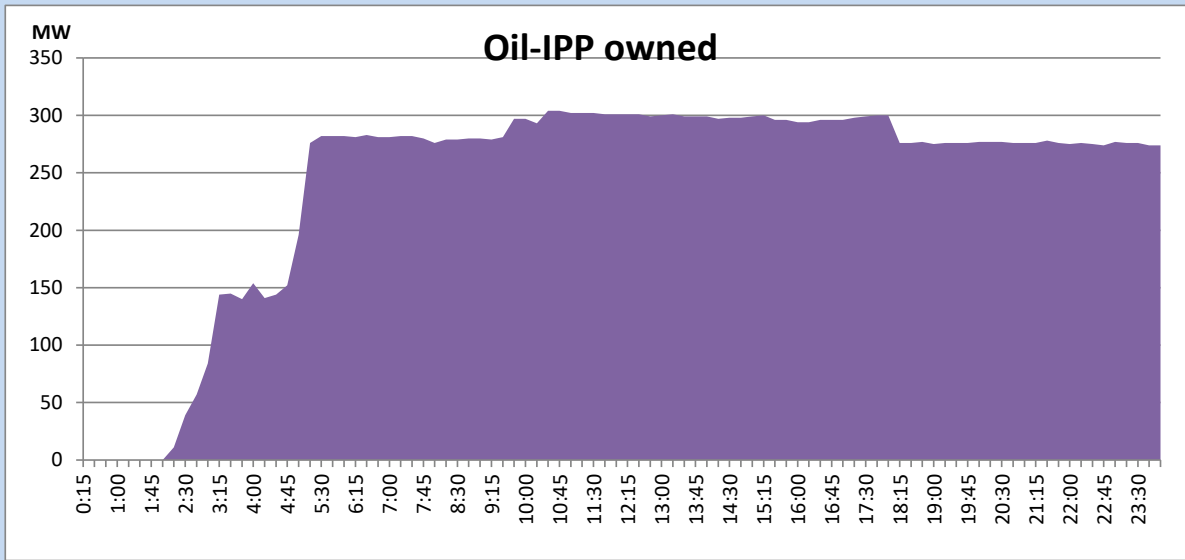
## CEB Oil Plant Generation during the Previous day

August 15, 2022



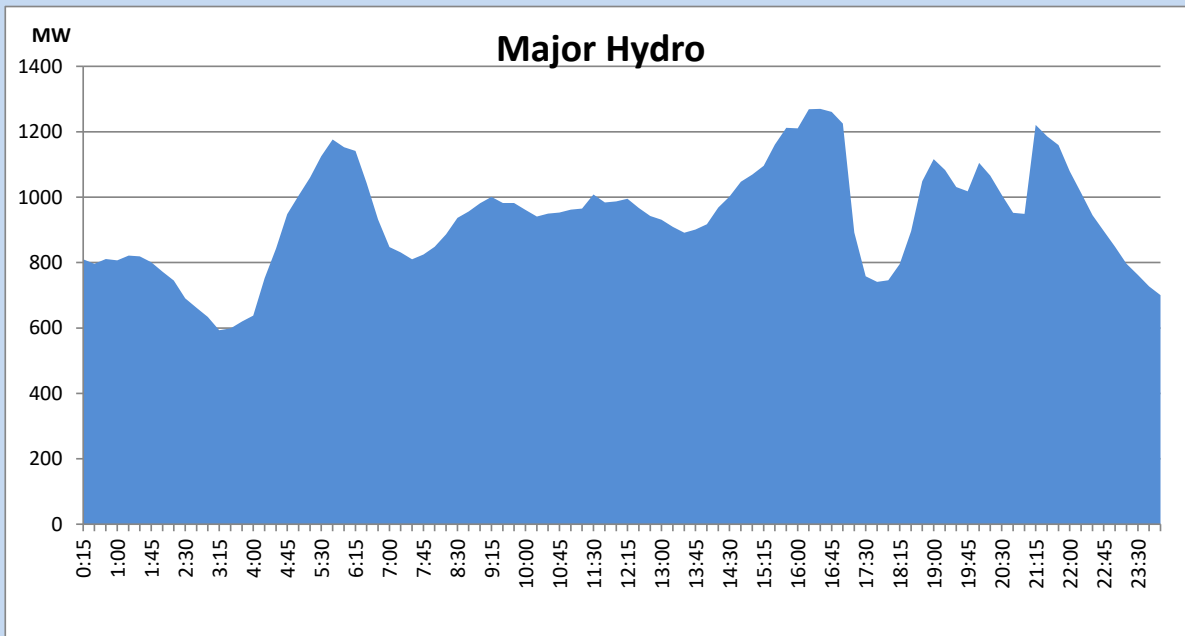
## IPP Oil Plant Generation during the Previous day

August 15, 2022



## Major Hydro Generation during the Previous day

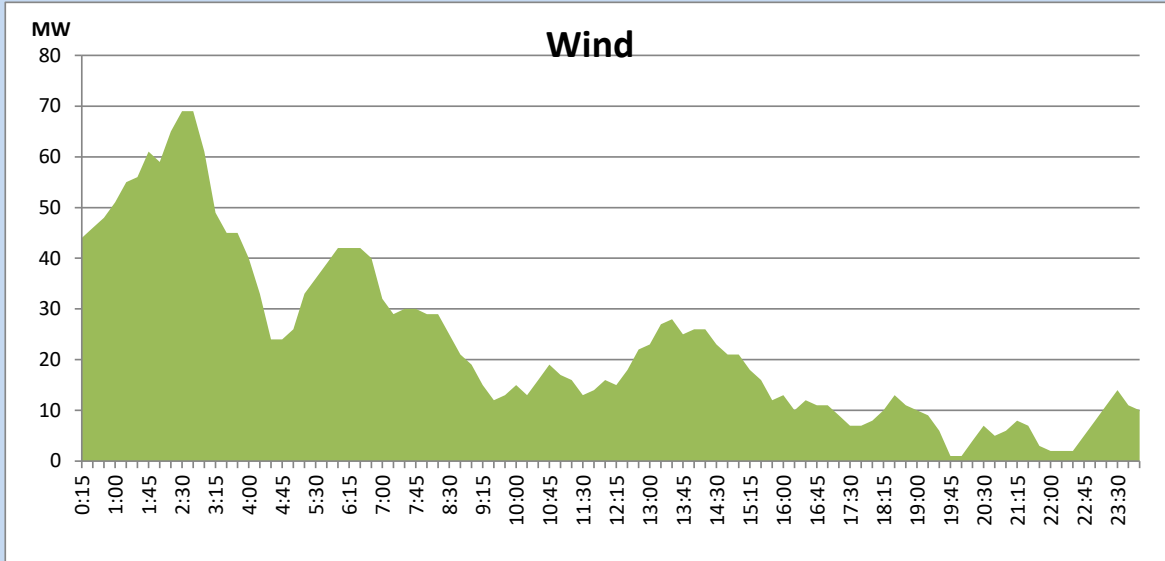
August 15, 2022



## Wind Generation during the Previous day

August 15, 2022

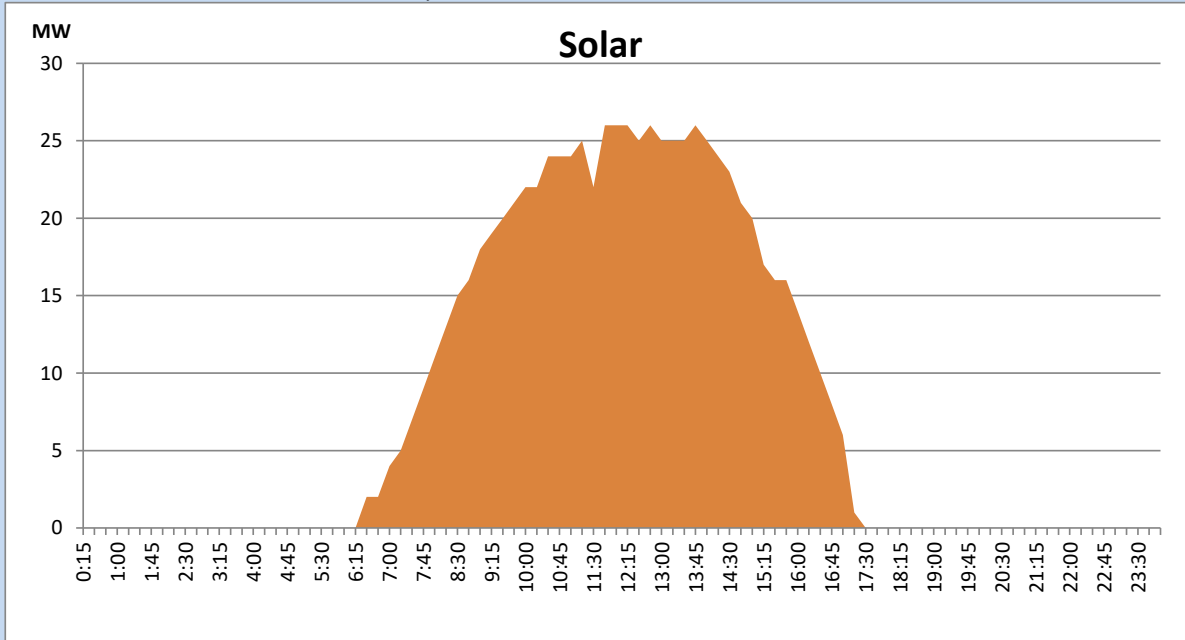
Based on Telemetered Power Stations only



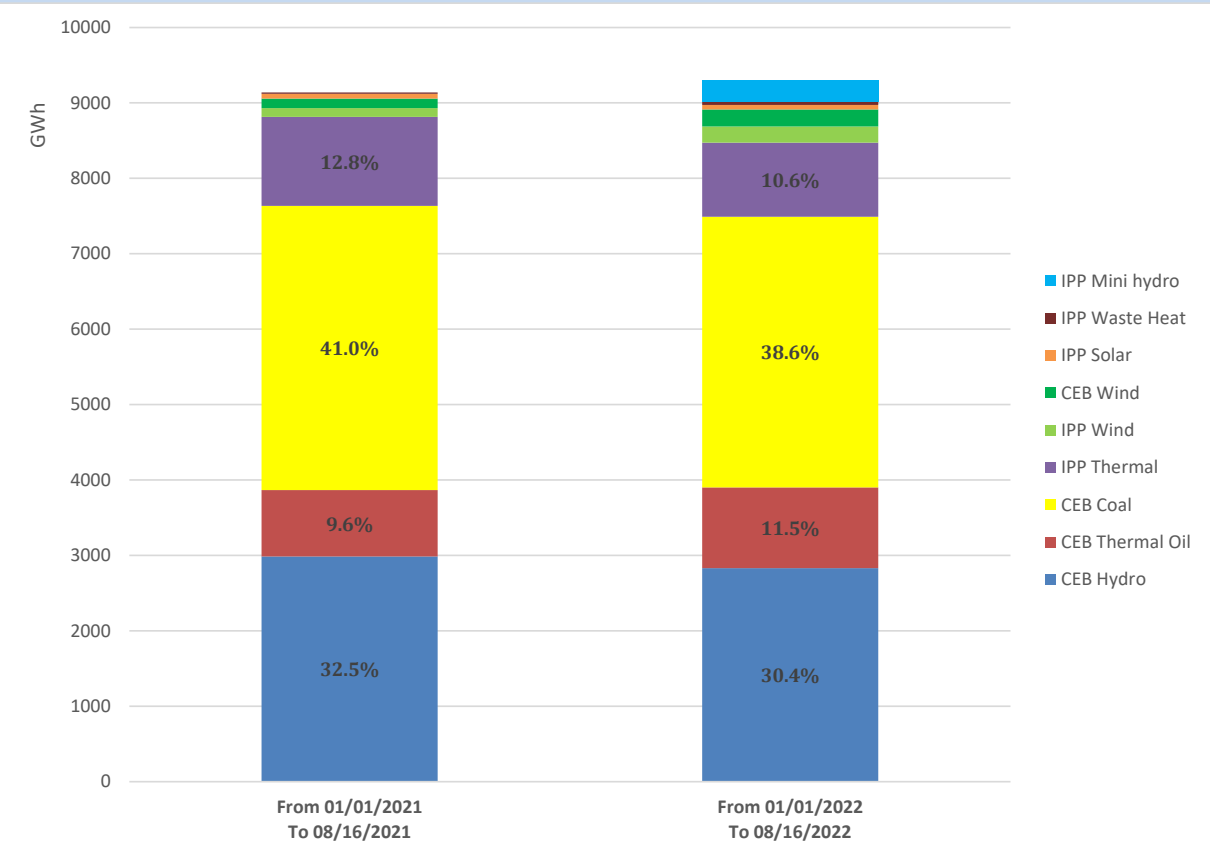
## Solar Generation during the Previous day

August 15, 2022

Based on Telemetered Power Stations only



# Cumulative Dispatch Comparison with Last Year



## Thermal Plant Fuel types

Power Station	Primary Fuel
CEB Thermal	
Sapugaskanda 1	Heavy Fuel
Sapugaskanda 2	Heavy Fuel
Kelanitissa Small Gas Turbines	Auto Diesel
GT 7 - Kelanitissa	Auto Diesel
Kelanitissa CCY	Naphtha or Diesel
Lakvijaya 1	Coal
Lakvijaya 2	Coal
Lakvijaya 3	Coal
Uthuru Janani	Heavy Fuel
Barge CEB	Heavy Fuel

Power Station	Primary Fuel
Private Thermal	
Sojitz - Kelanitissa	Auto Diesel
West Coast	Auto Diesel / Heavy Fuel
ACE Matara	Heavy Fuel
ACE Embilipitiya	Heavy Fuel

## Major Incidents during the day -as reported by CEB morning of

August 17, 2022

- 1) Rotational manual load shedding was carried out from 05:30 hrs to 08:30 hrs and 13:00 hrs to 22:00 hrs.
- 2) Old Laxapana unit 02 tripped at 07:04 hrs indicating low generator cooling water flow. Old Laxapana unit 02 resumed generation at 09:03hrs.