

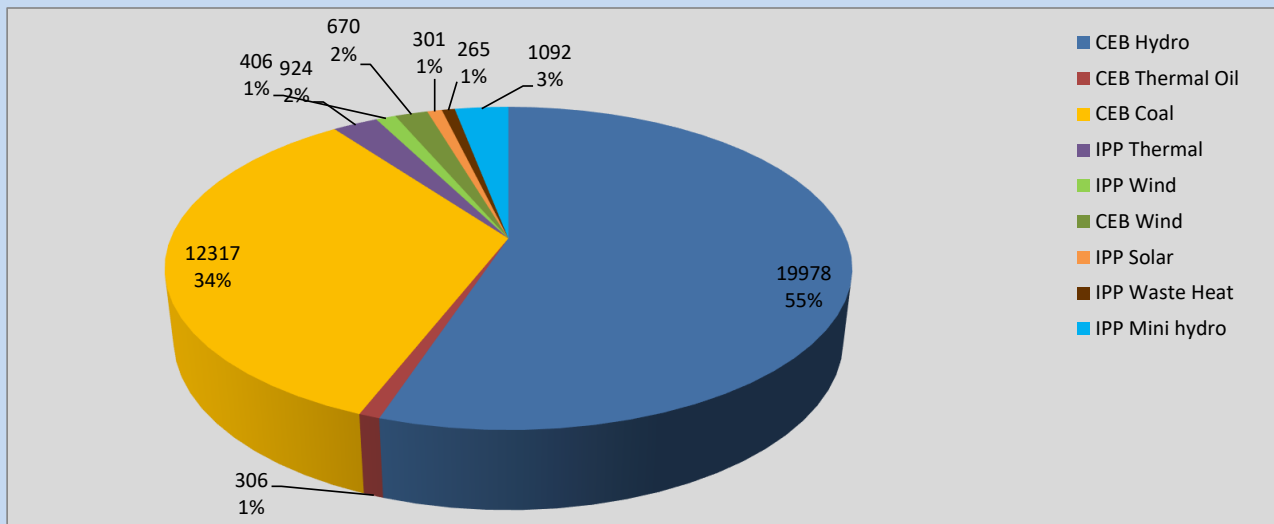
Generation and Reservoirs Statistics

August 14, 2022



PUBLIC UTILITIES COMMISSION OF SRI LANKA

Daily Generation Mix in MWh



Total Generation **36,259 MWh**

Note: Above data is excluding contribution from Roof Top Solar, 1MW Solar and certain Mini Hydro plants

Cumulative Dispatch

Note: Following data is Excluding contribution from Roof Top Solar, 1MW solar and Mini Hydro plants

For Current Month

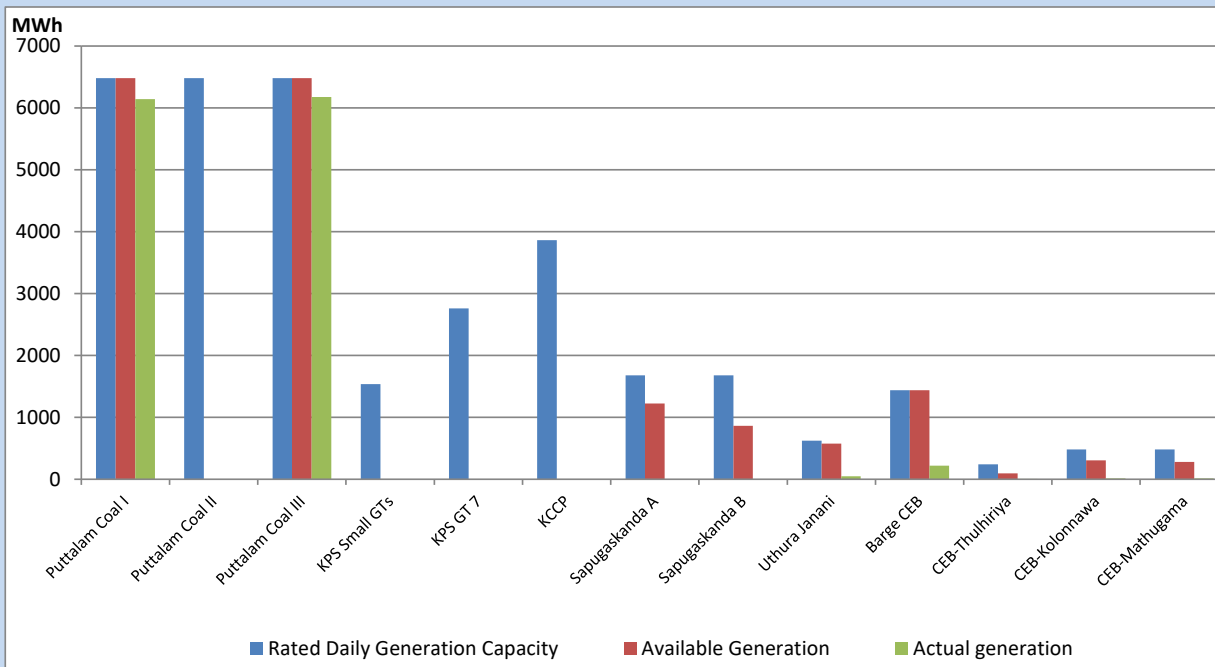
Category	Dispatch (GWh)	Percentage
CEB Hydro	291.15	54.34%
CEB Thermal Oil	5.94	1.11%
CEB Coal	155.29	28.98%
IPP Thermal	0.95	0.18%
SPP Wind	27.19	5.07%
CEB Wind	24.15	4.51%
SPP Solar	3.78	0.71%
SPP Solid Waste	1.81	0.34%
Mini Hydro	25.55	4.77%
Total	535.81	

For Current Year

Category	Dispatch (GWh)	Percentage
CEB Hydro	2,789.3	30.24%
CEB Thermal Oil	1,061.3	11.50%
CEB Coal	3,574.9	38.75%
IPP Thermal	973.4	10.55%
SPP Wind	211.2	2.29%
CEB Wind	225.4	2.44%
SPP Solar	57.7	0.63%
SPP Solid Waste	45.9	0.50%
Mini Hydro	286.5	3.11%
Total	9,225.4	

CEB owned Thermal Plant Dispatch

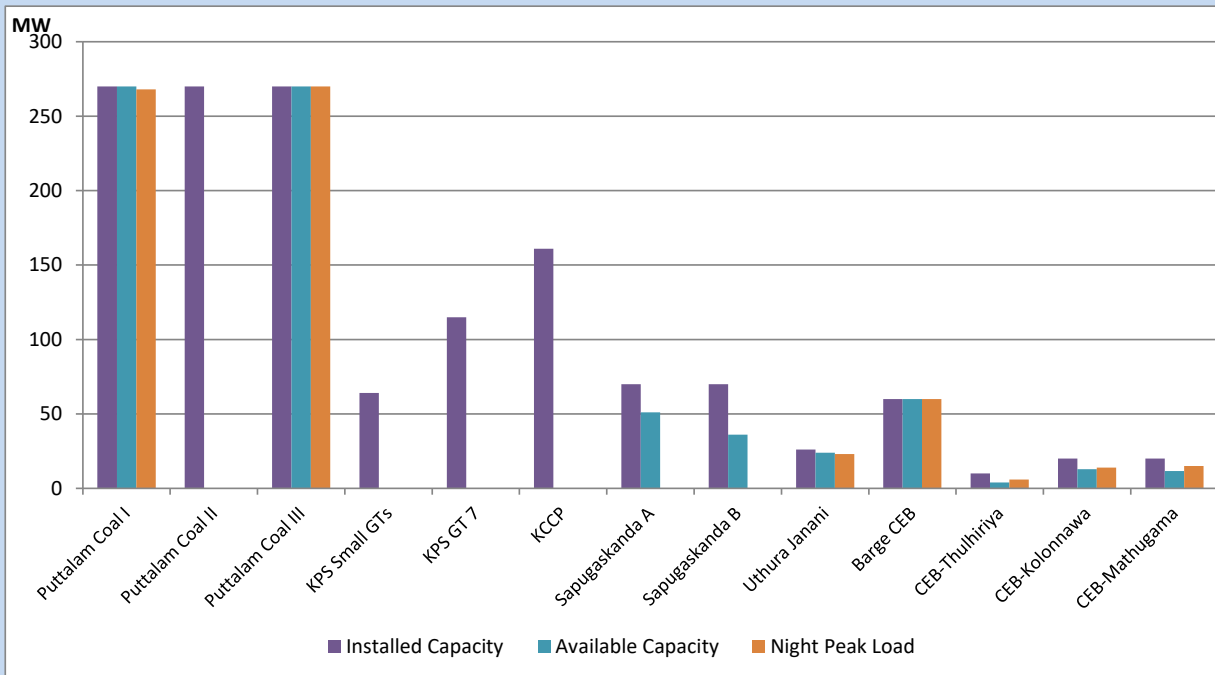
August 14, 2022



Available Generation is estimated based on plant availability at 6.00am on

August 15, 2022

CEB owned Thermal Plant Loading at the Night Peak



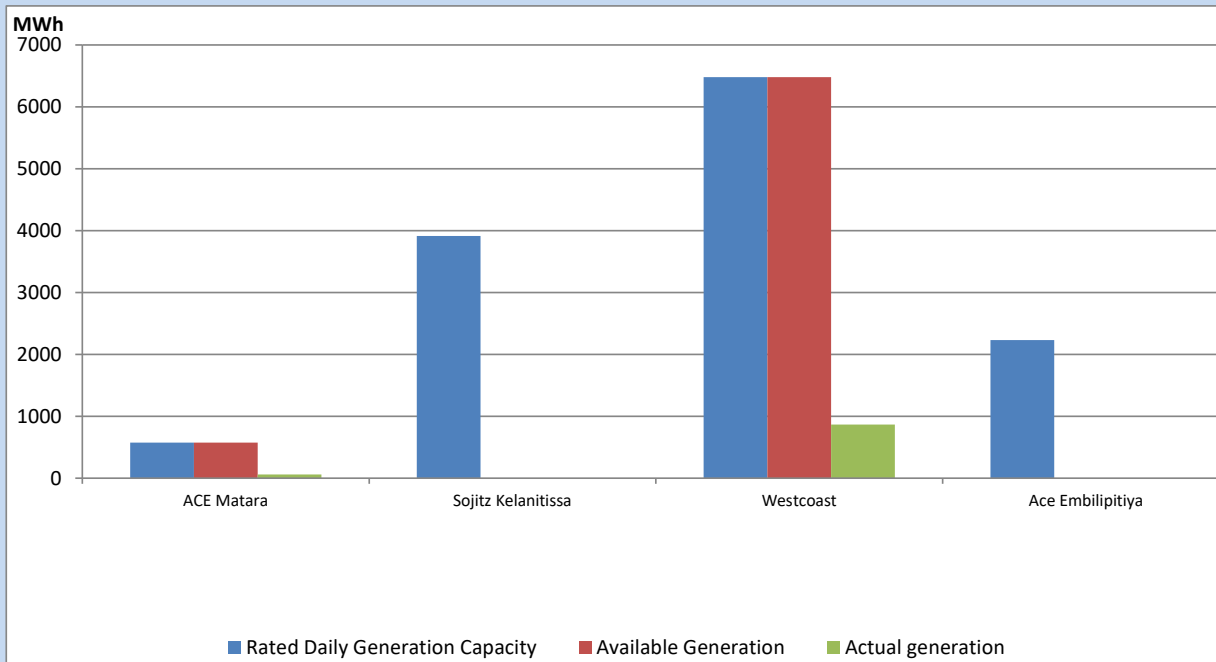
Note- Plant availability is recorded at 6.00 am on

August 15, 2022

IPP owned Thermal Plant Dispatch

August 14, 2022

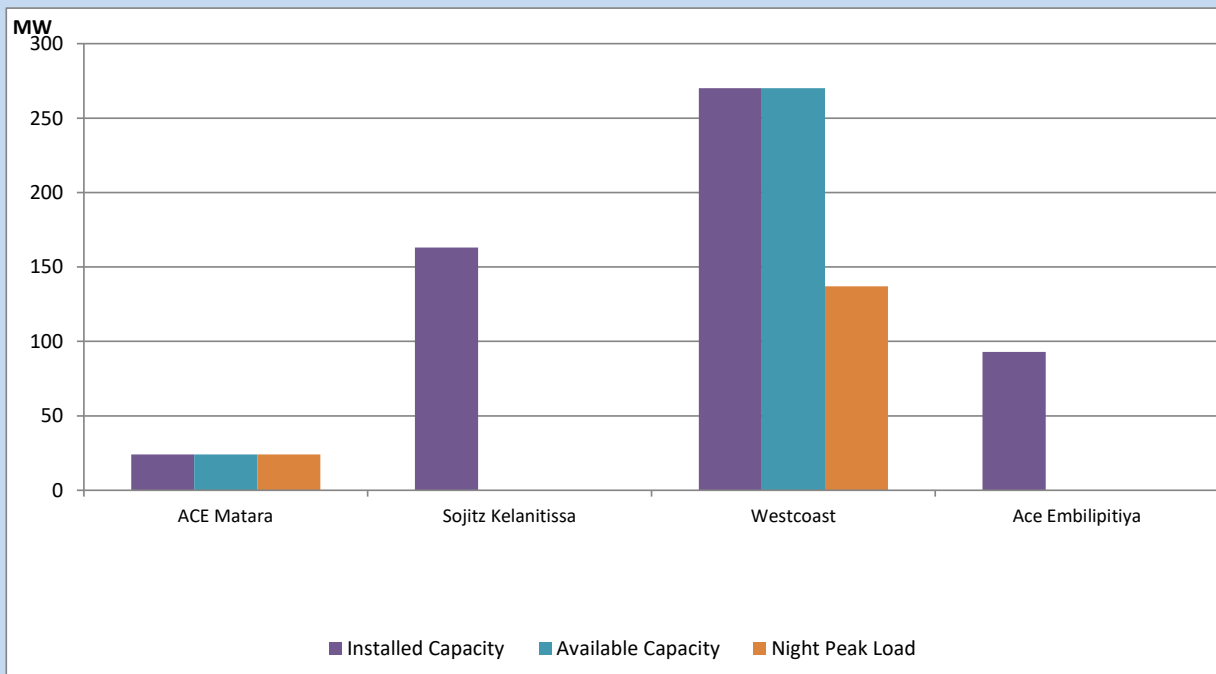
Asia Power, V Power Pallekale, Vpower Galle, V Power Horana, Vpower Hambantota, Vpower Valachchena and Altaqa Mahiyanganaya are not available due to expiration of PPAs



Available Generation is estimated based on plant availability at 6.00am on

August 15, 2022

IPP owned Thermal Plant Loading at the Night Peak

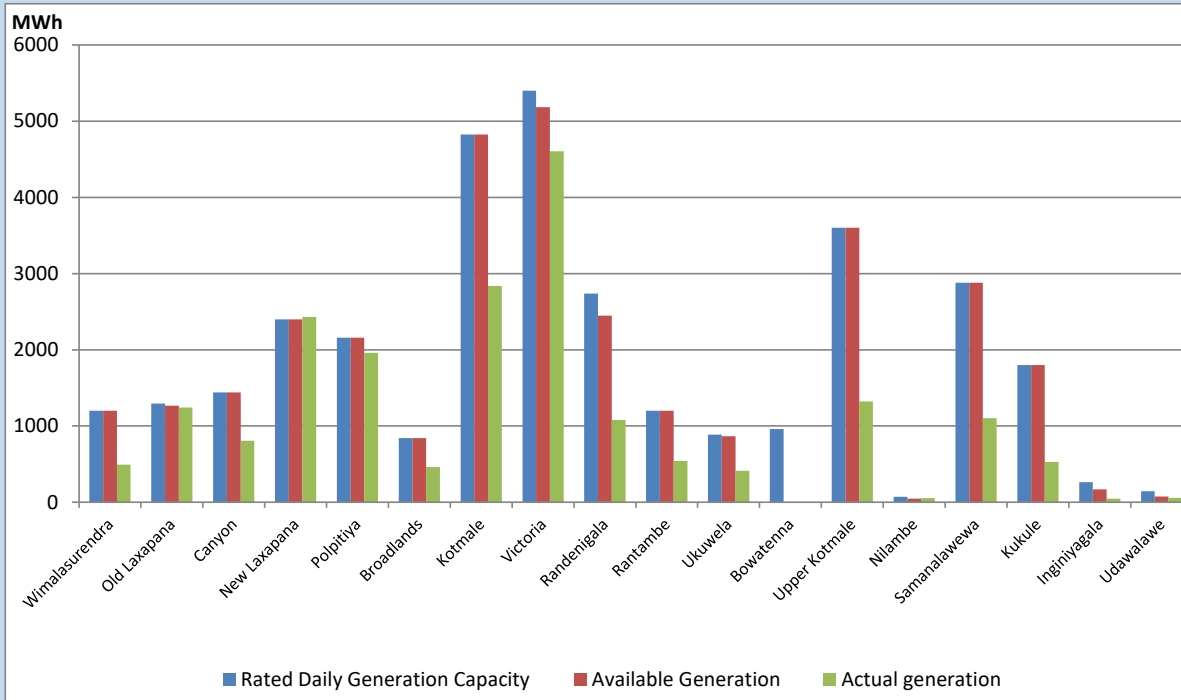


Note- Plant availability is recorded at 6.00 am on

August 15, 2022

Major Hydro Plant Dispatch

August 14, 2022

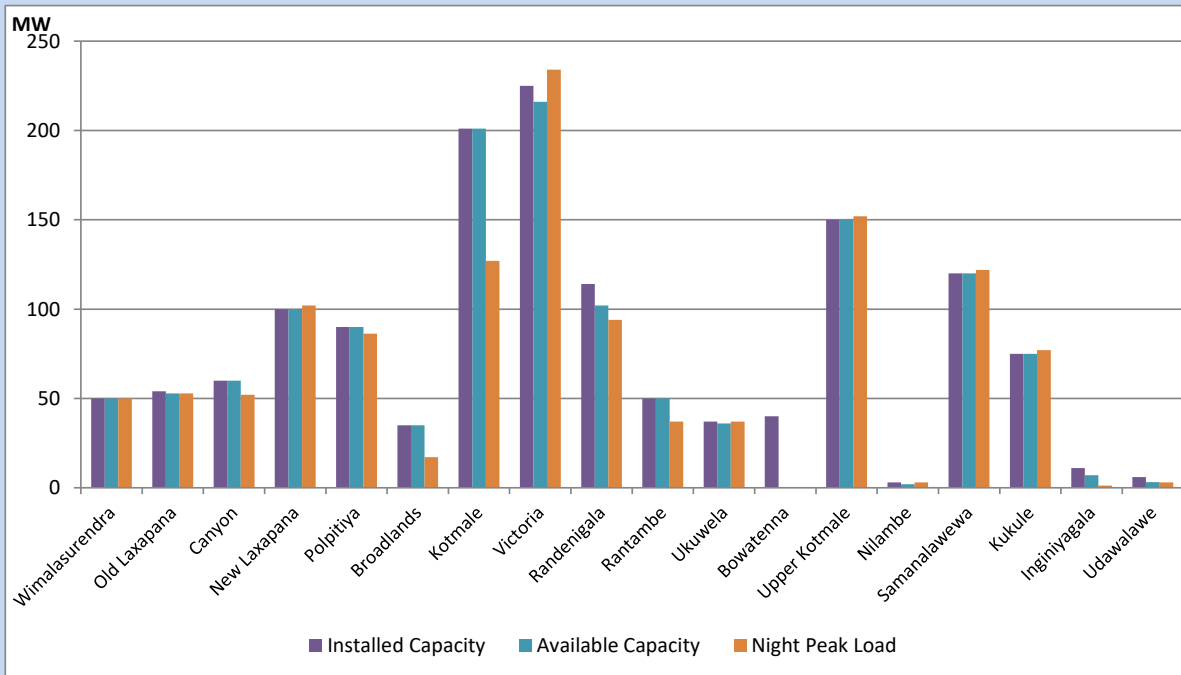


Available Generation is estimated based on plant availability at 6.00am on August 15, 2022
 Broadlands power plant is operating in the Commissioning Stage

August 15, 2022

Major Hydro Plant Loading at Night Peak

August 14, 2022



Note- Plant availability is recorded at 6.00 am on August 15, 2022
 Broadlands power plant is operating in the Commissioning Stage

Summary of Major Plant performance

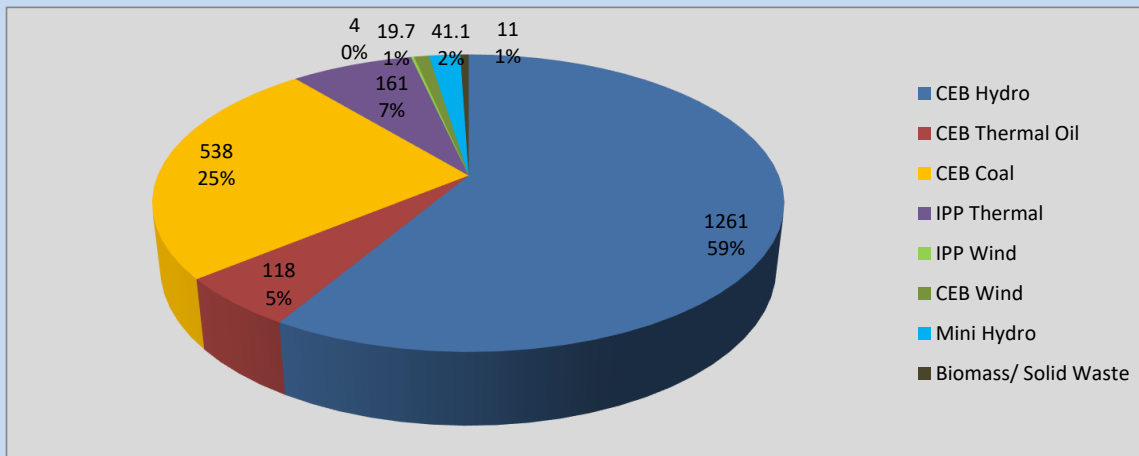
Plant	Installed Capacity	Plant Availability	Night peak Load	Plant Dispatch
	(MW)	(MW)	(MW)	(MWh)
Wimalasurendra	50	50	50	493
Old Laxapana	54	53	53	1,243
Canyon	60	60	52	805
New Laxapana	100	100	102	2,430
Polpitiya	90	90	86	1,959
Broadlands	35	35	17	460
Kotmale	201	201	127	2,840
Victoria	225	216	234	4,606
Randenigala	114	102	94	1,080
Rantambe	50	50	37	543
Ukuwela	37	36	37	412
Bowatenna	40	0	0	0
Upper Kotmale	150	150	152	1,321
Nilambe	3	2	3	53
Samanalawewa	120	120	122	1,102
Kukule	75	75	77	527
Inginiyagala	11	7	1	46
Udawalawe	6	3	3	58
Puttalam Coal I	270	270	268	6,141
Puttalam Coal II	270	0	0	0
Puttalam Coal III	270	270	270	6,176
KPS Small GTs	64	0	0	0
KPS GT 7	115	0	0	0
KCCP	161	0	0	0
Sapugaskanda A	70	51	0	0
Sapugaskanda B	70	36	0	0
Uthura Janani	26	24	23	49
Barge CEB	60	60	60	221
CEB-Thulhiriya	10	4	6	7
CEB-Kolonnawa	20	13	14	16
CEB-Mathugama	20	12	15	13
ACE Matara	24	24	24	58
Sojitz Kelanitissa	163	0	0	0
West Coast	270	270	137	866
ACE Embilipitiya	93	0	0	0
Total	3,397	2,383	2,140	36,259

Plant availability is the availability recorded at 6 am on

August 15, 2022

Contribution to the Night Peak in MW

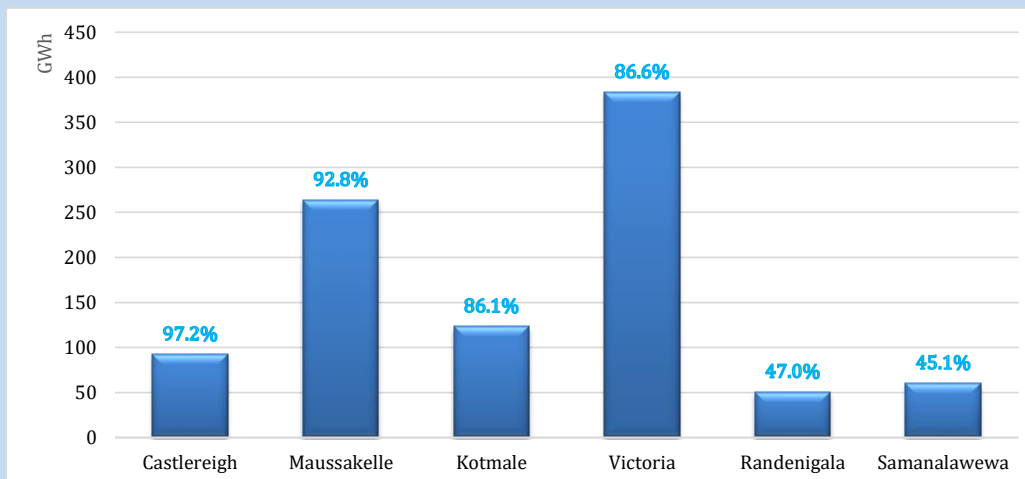
August 14, 2022



Night Peak*	2,153.3 MW
Day Peak	1,419.5 MW
Minimum Demand	1,251.4 MW

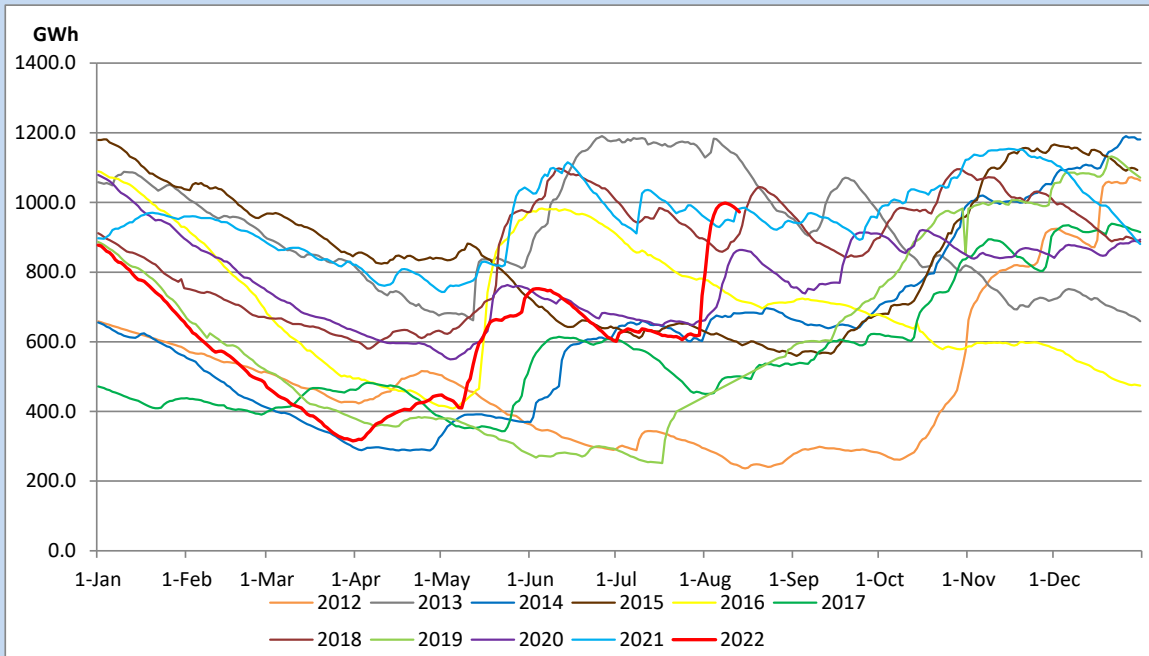
Above figures are excluding contribution from Roof Top Solar, 1MW solar, certain Wind plants and Mini Hydro plants

Reservoir Levels - as at 06.00 Hr on August 15, 2022

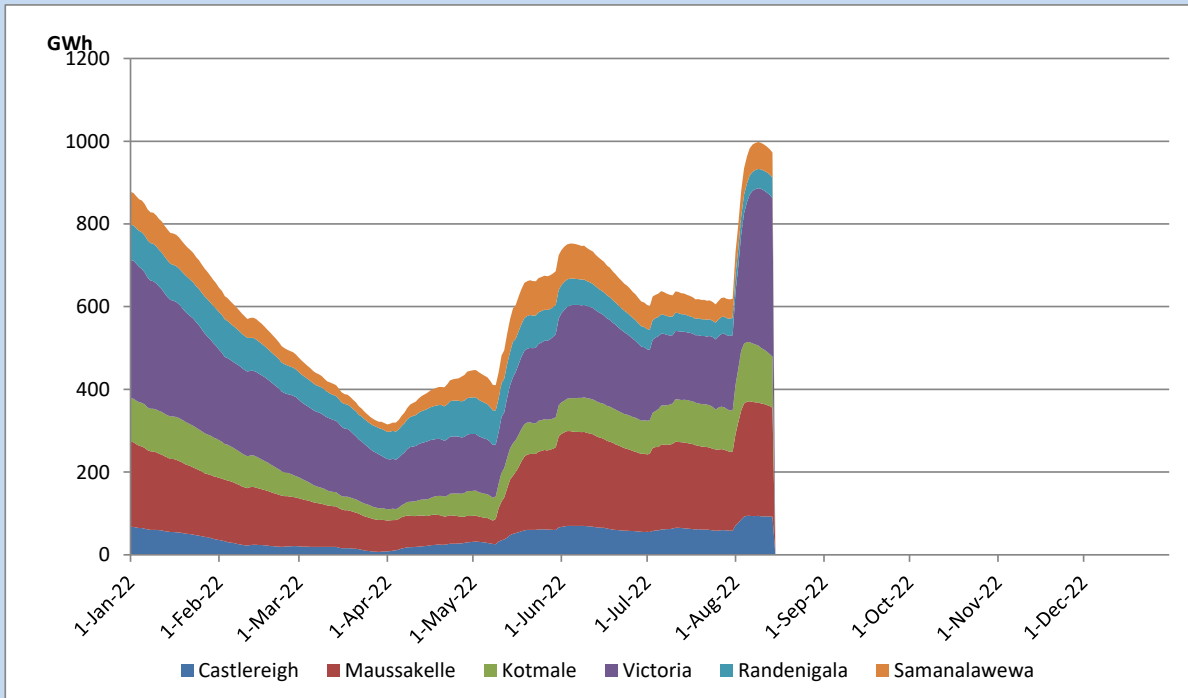


Total Reservoir Level	972.8 GWh
% of Total capacity	80.7%

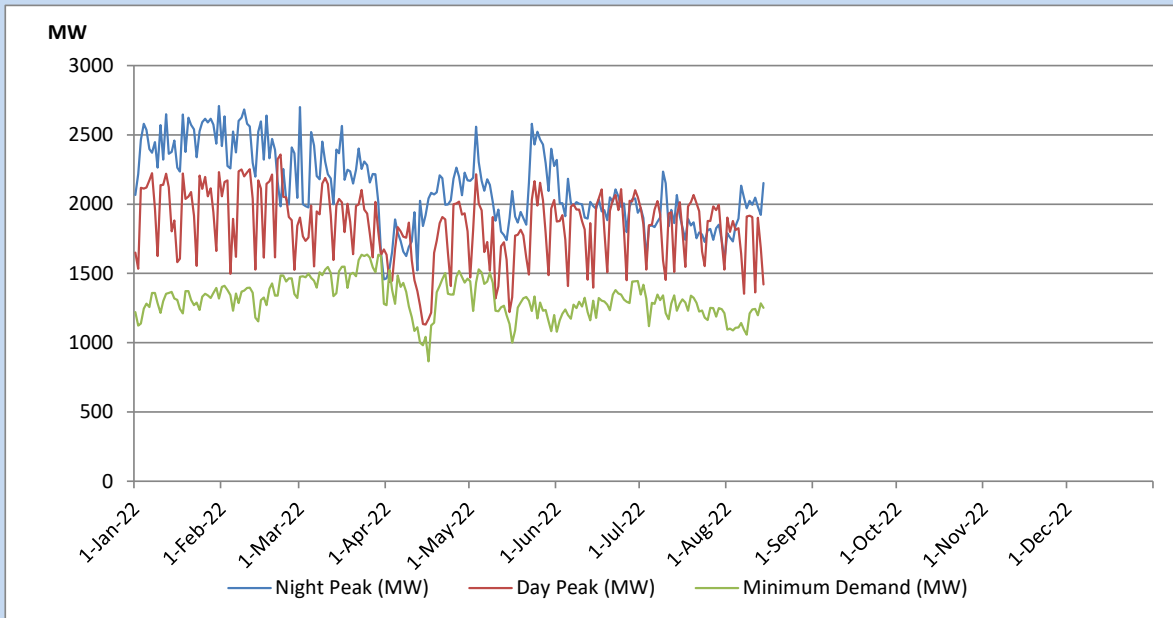
Comparison of Total Reservoir Storage Levels with Past Years



Variation of Major Hydro Reservoir Levels in the current year (GWh)



Variation of Demand during the current year

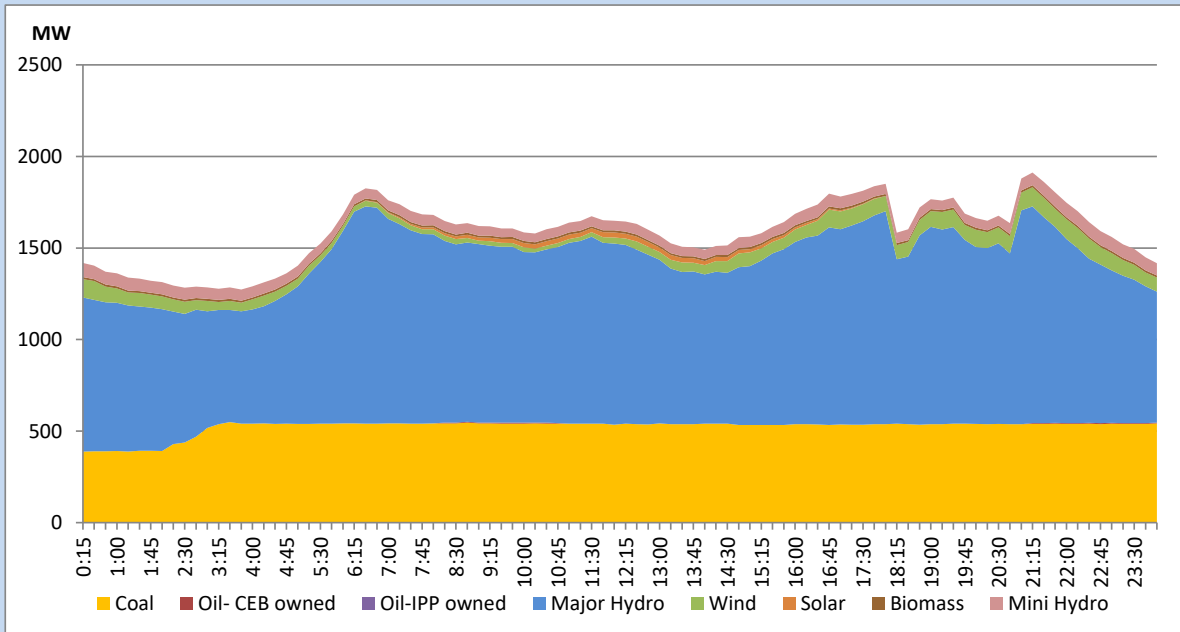


The above figures are excluding contribution from Roof Top Solar, 1MW solar, certain Wind plants and Mini Hydro plants

Daily Load Curve of the Previous day

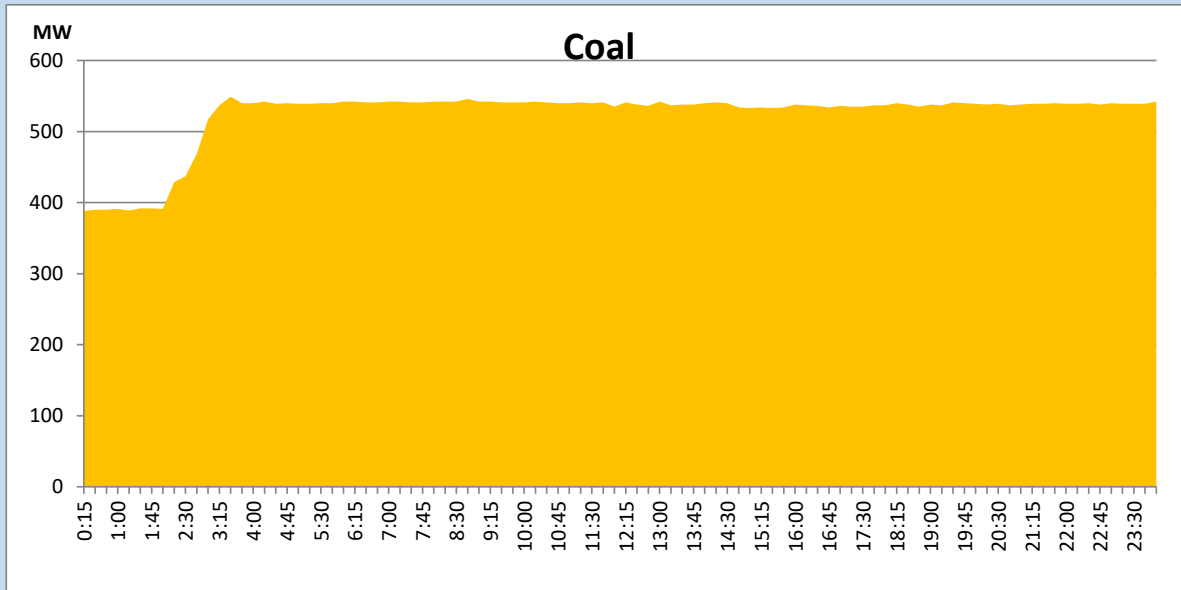
August 13, 2022

Solar and wind data is based on Telemetered Power Stations only



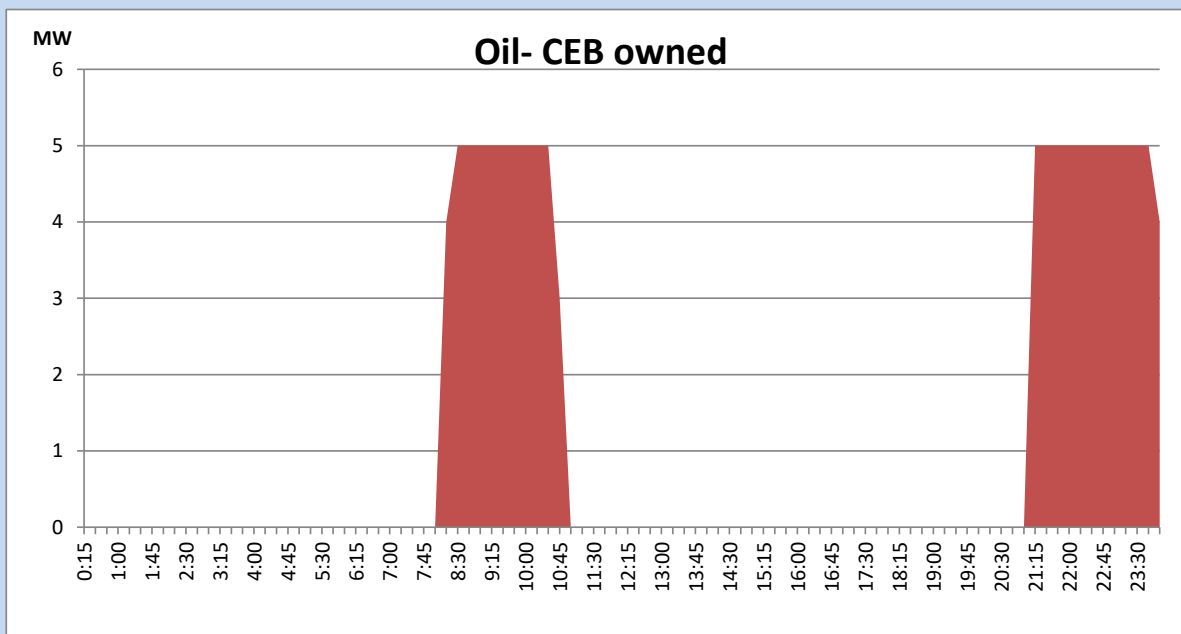
Coal Generation during the Previous day

August 13, 2022



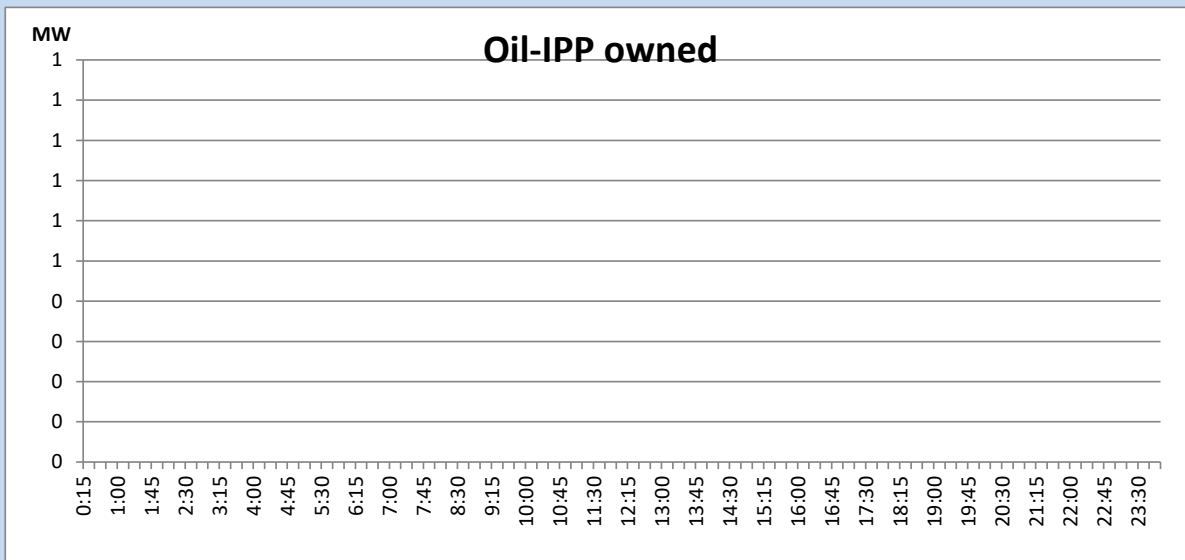
CEB Oil Plant Generation during the Previous day

August 13, 2022



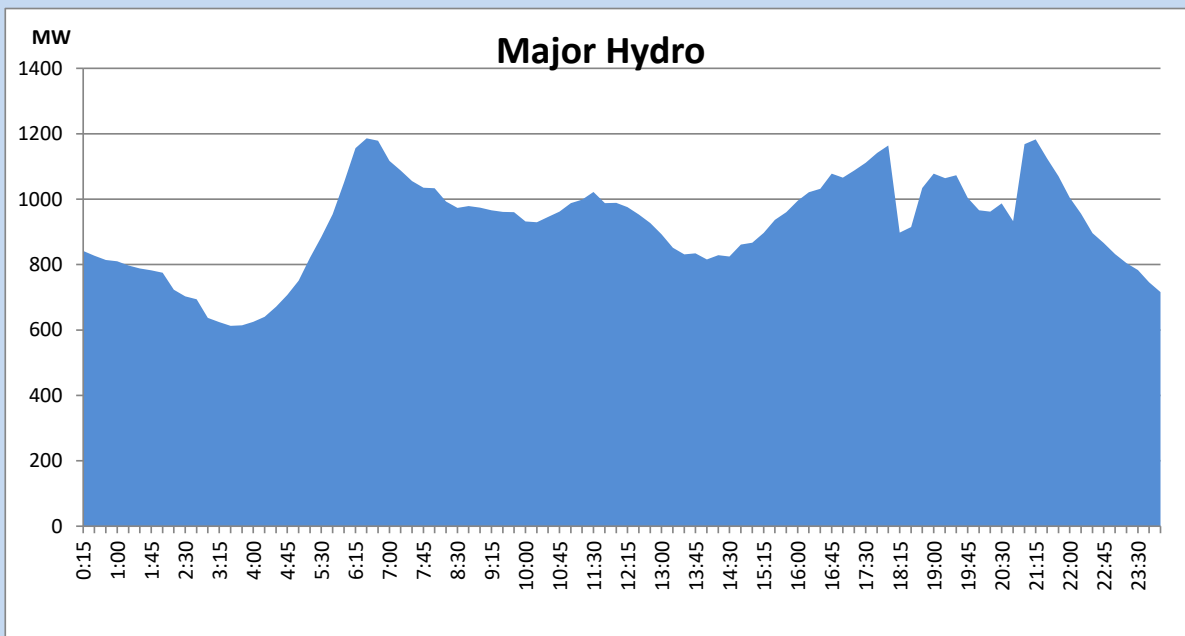
IPP Oil Plant Generation during the Previous day

August 13, 2022



Major Hydro Generation during the Previous day

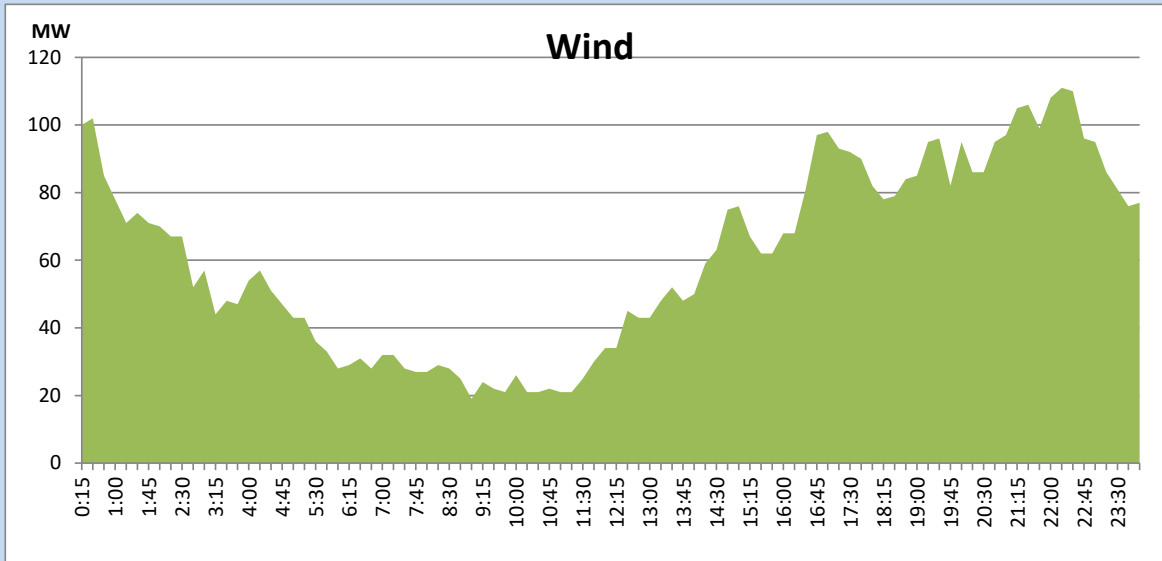
August 13, 2022



Wind Generation during the Previous day

August 13, 2022

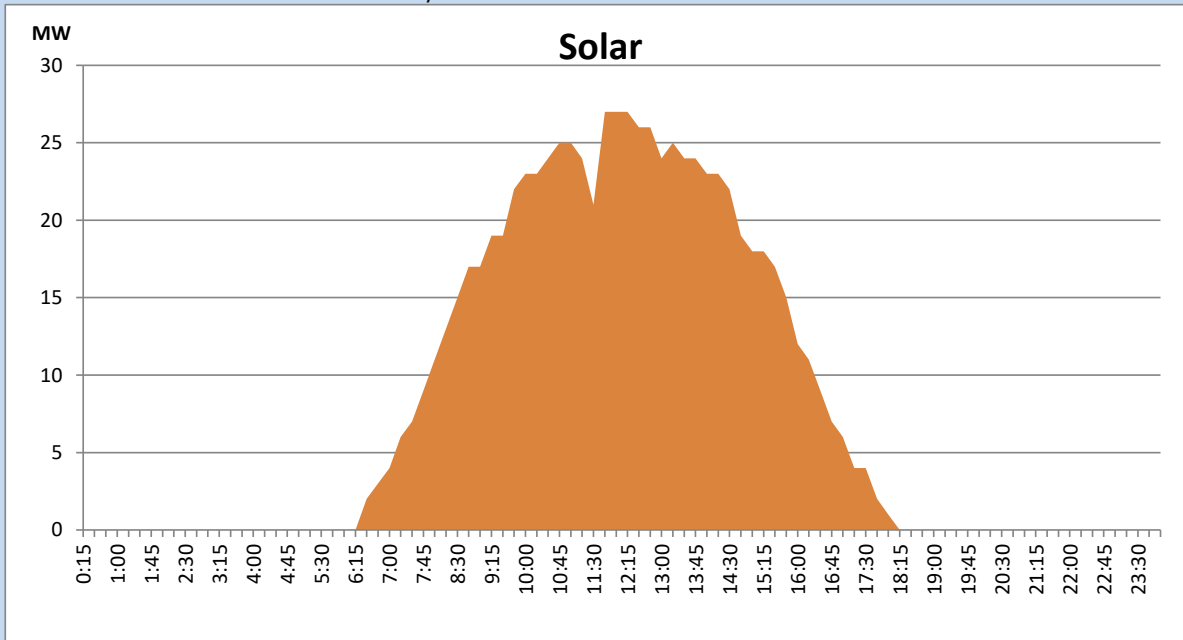
Based on Telemetered Power Stations only



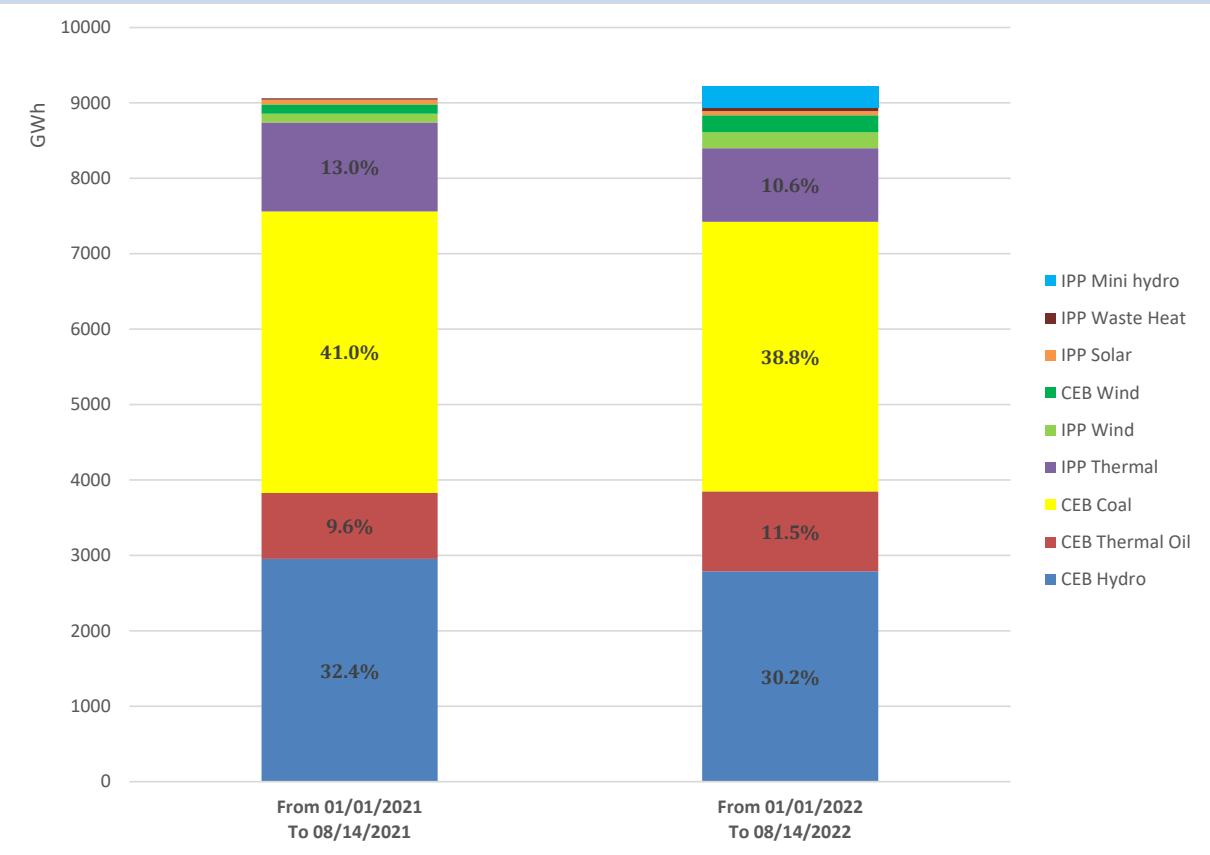
Solar Generation during the Previous day

August 13, 2022

Based on Telemetered Power Stations only



Cumulative Dispatch Comparison with Last Year



Thermal Plant Fuel types

Power Station	Primary Fuel
CEB Thermal	
Sapugaskanda 1	Heavy Fuel
Sapugaskanda 2	Heavy Fuel
Kelanitissa Small Gas Turbines	Auto Diesel
GT 7 - Kelanitissa	Auto Diesel
Kelanitissa CCY	Naphtha or Diesel
Lakvijaya 1	Coal
Lakvijaya 2	Coal
Lakvijaya 3	Coal
Uthuru Janani	Heavy Fuel
Barge CEB	Heavy Fuel

Power Station	Primary Fuel
Private Thermal	
Sojitz - Kelanitissa	Auto Diesel
West Coast	Auto Diesel / Heavy Fuel
ACE Matara	Heavy Fuel
ACE Embilipitiya	Heavy Fuel

Major Incidents during the day -as reported by CEB morning of

August 15, 2022

- 1) Lakvijaya Unit 01 performed forced shutdown and reached OMW at 01:32hrs due to boiler tube leak.