

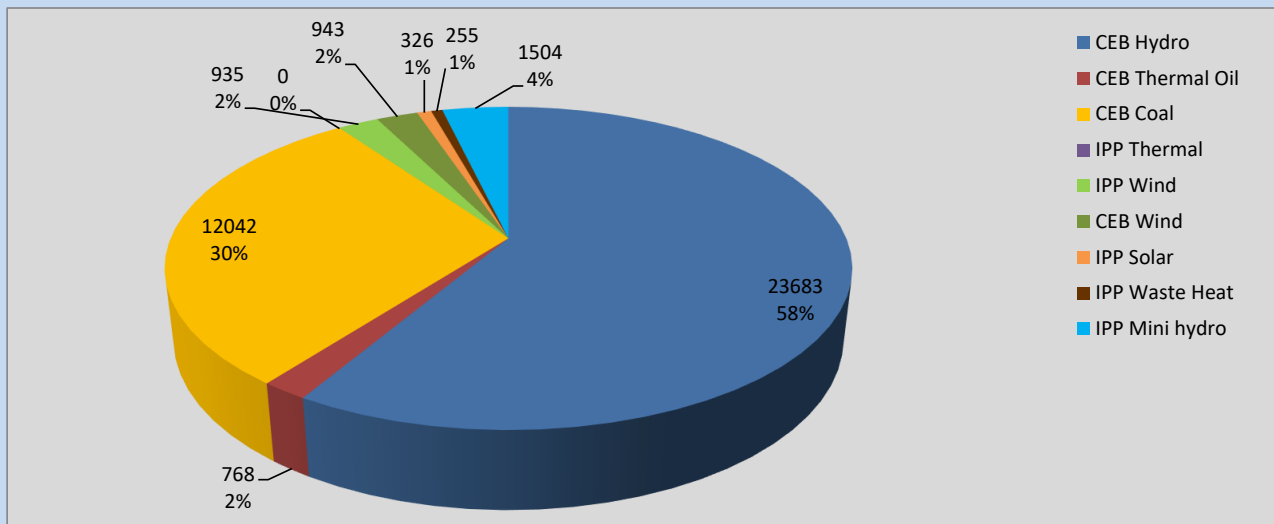
Generation and Reservoirs Statistics

August 12, 2022



PUBLIC UTILITIES COMMISSION OF SRI LANKA

Daily Generation Mix in MWh



Total Generation **40,456 MWh**

Note: Above data is excluding contribution from Roof Top Solar, 1MW Solar and certain Mini Hydro plants

Cumulative Dispatch

Note: Following data is Excluding contribution from Roof Top Solar, 1MW solar and Mini Hydro plants

For Current Month

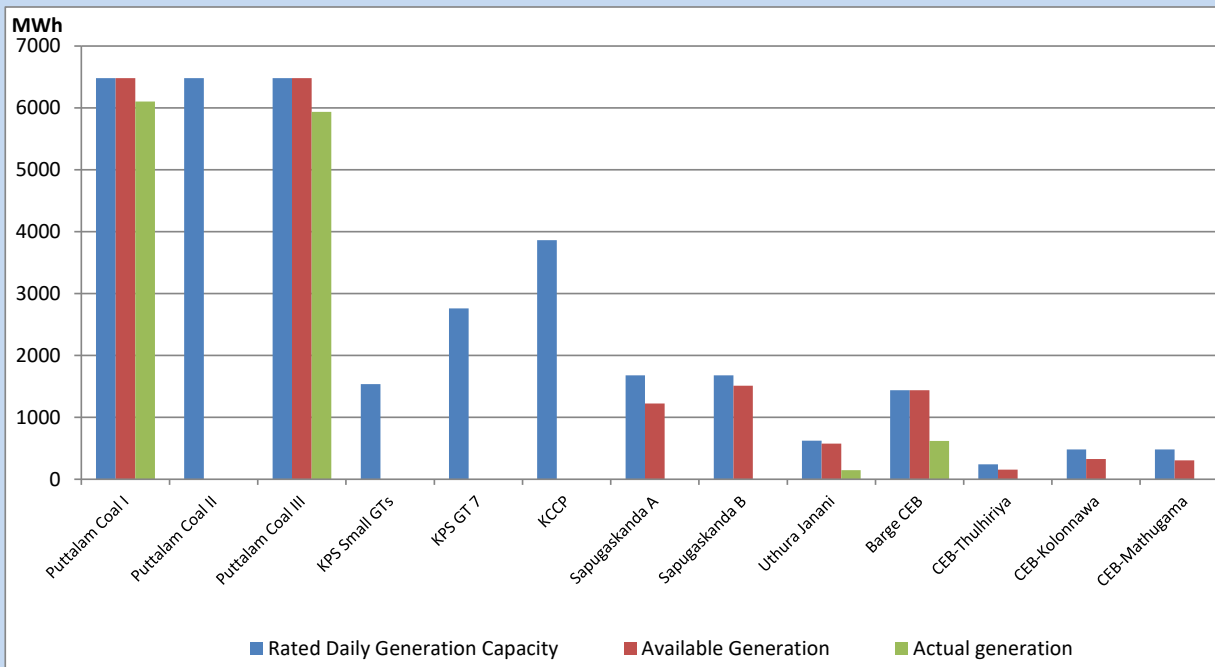
Category	Dispatch (GWh)	
CEB Hydro	248.82	53.97%
CEB Thermal Oil	5.61	1.22%
CEB Coal	130.41	28.29%
IPP Thermal	0.03	0.01%
SPP Wind	26.09	5.66%
CEB Wind	22.42	4.86%
SPP Solar	3.16	0.69%
SPP Solid Waste	1.27	0.28%
Mini Hydro	23.20	5.03%
Total	461.01	

For Current Year

Category	Dispatch (GWh)	
CEB Hydro	2,747.0	30.02%
CEB Thermal Oil	1,061.0	11.59%
CEB Coal	3,550.1	38.80%
IPP Thermal	972.5	10.63%
SPP Wind	210.1	2.30%
CEB Wind	223.7	2.44%
SPP Solar	57.1	0.62%
SPP Solid Waste	45.3	0.50%
Mini Hydro	284.2	3.11%
Total	9,150.6	

CEB owned Thermal Plant Dispatch

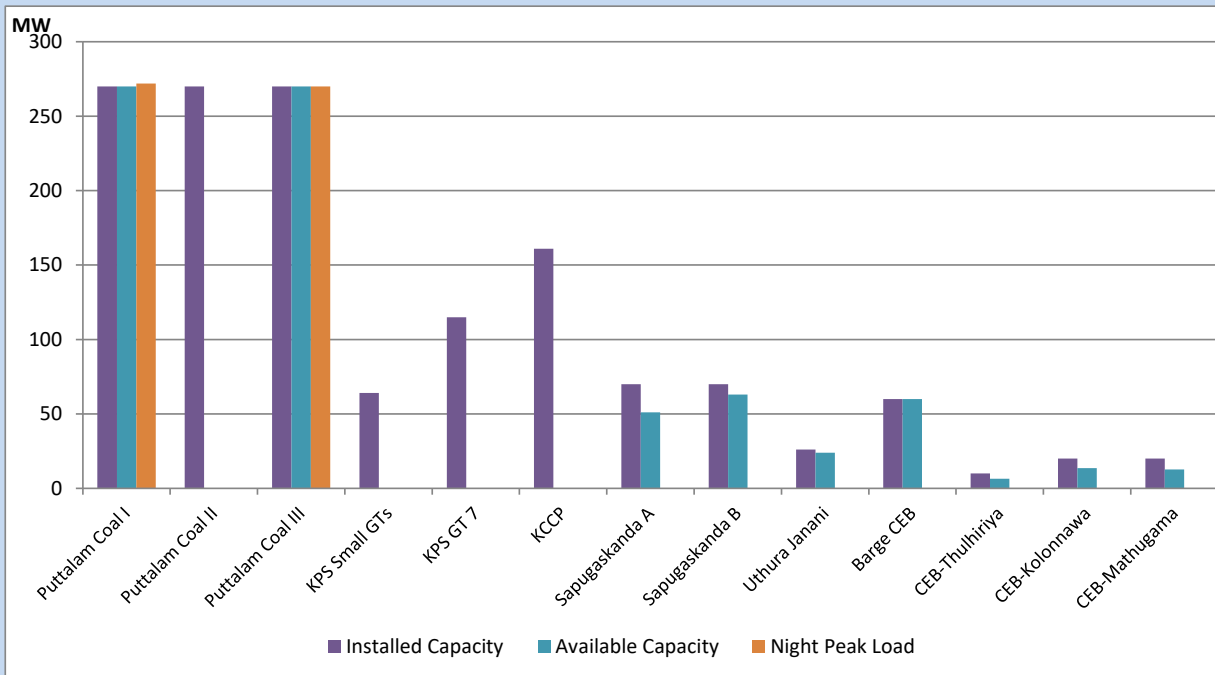
August 12, 2022



Available Generation is estimated based on plant availability at 6.00am on

August 13, 2022

CEB owned Thermal Plant Loading at the Night Peak



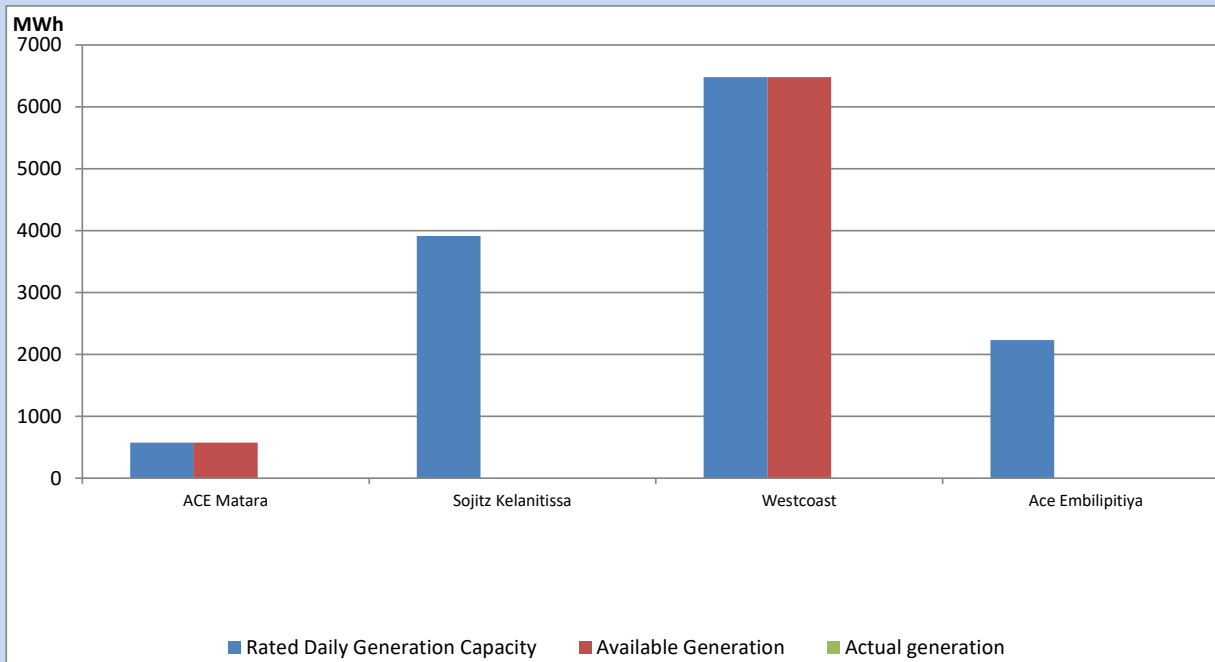
Note- Plant availability is recorded at 6.00 am on

August 13, 2022

IPP owned Thermal Plant Dispatch

August 12, 2022

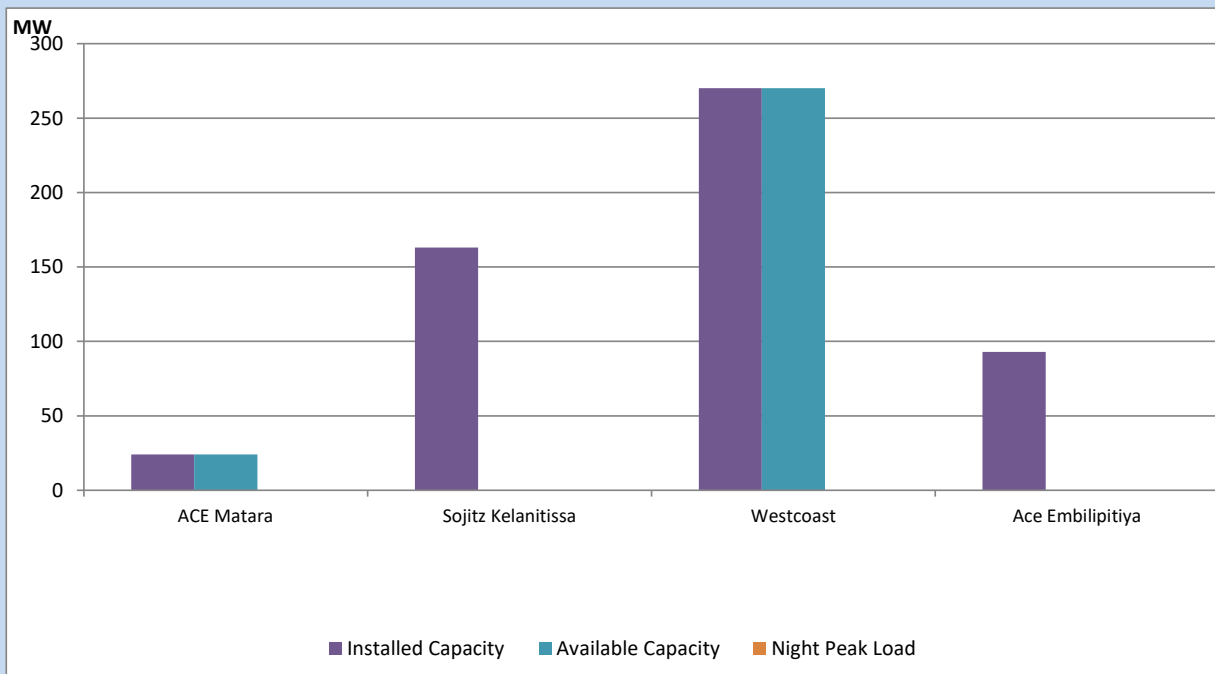
Asia Power, V Power Pallekale, Vpower Galle, V Power Horana, Vpower Hambantota, Vpower Valachchena and Altaqa Mahiyanganaya are not available due to expiration of PPAs



Available Generation is estimated based on plant availability at 6.00am on

August 13, 2022

IPP owned Thermal Plant Loading at the Night Peak

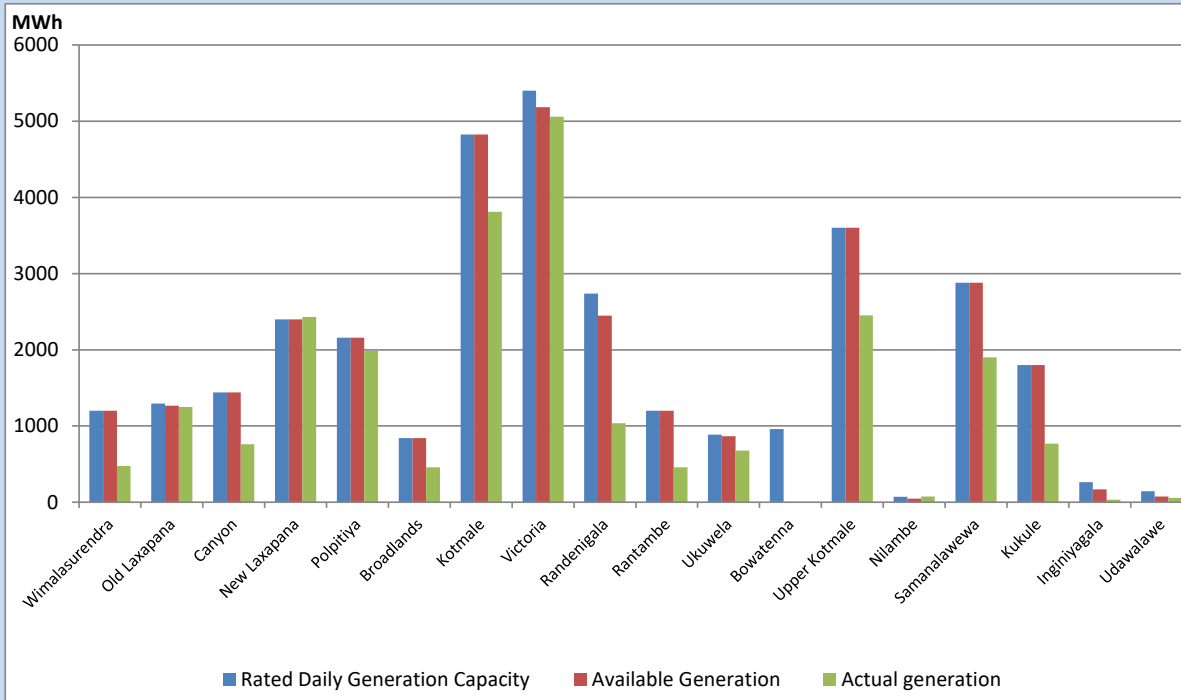


Note- Plant availability is recorded at 6.00 am on

August 13, 2022

Major Hydro Plant Dispatch

August 12, 2022

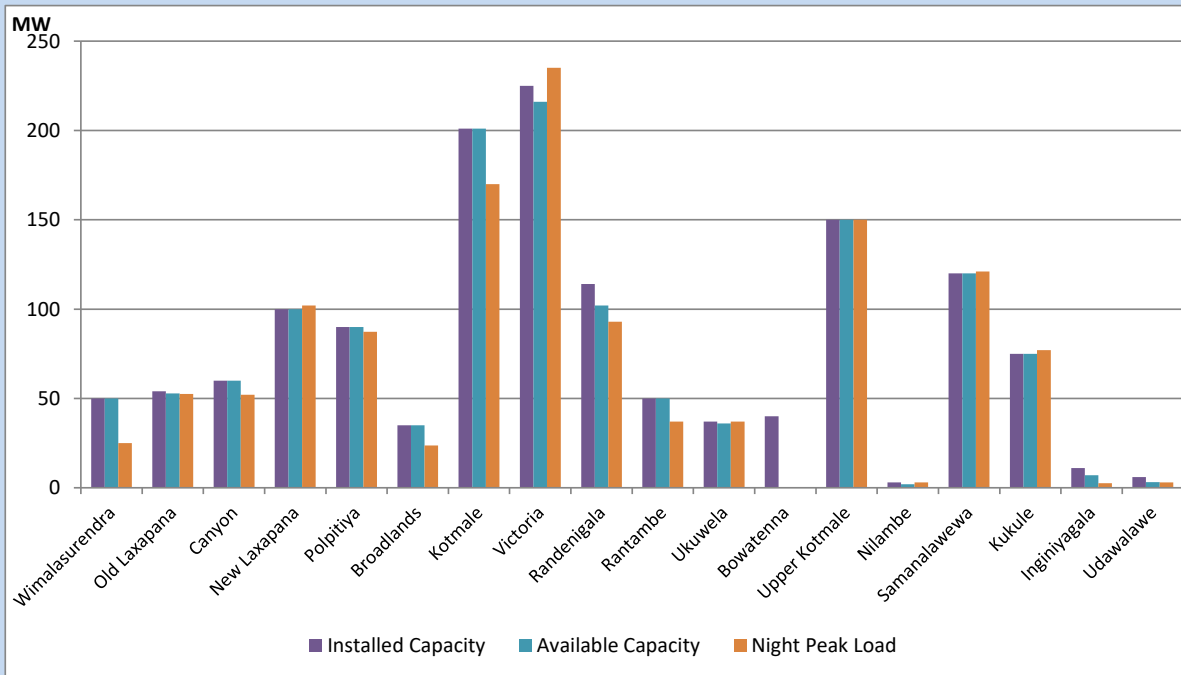


Available Generation is estimated based on plant availability at 6.00am on August 13, 2022
 Broadlands power plant is operating in the Commissioning Stage

August 13, 2022

Major Hydro Plant Loading at Night Peak

August 12, 2022



Note- Plant availability is recorded at 6.00 am on August 13, 2022
 Broadlands power plant is operating in the Commissioning Stage

Summary of Major Plant performance

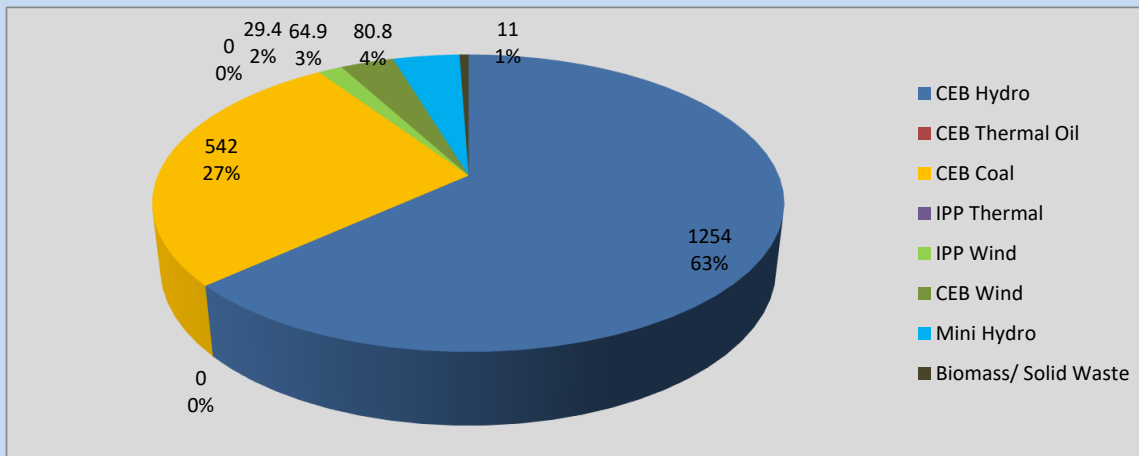
Plant	Installed Capacity	Plant Availability	Night peak Load	Plant Dispatch
	(MW)	(MW)	(MW)	(MWh)
Wimalasurendra	50	50	25	474
Old Laxapana	54	53	53	1,250
Canyon	60	60	52	761
New Laxapana	100	100	102	2,431
Polpitiya	90	90	87	1,986
Broadlands	35	35	24	458
Kotmale	201	201	170	3,810
Victoria	225	216	235	5,059
Randenigala	114	102	93	1,035
Rantambe	50	50	37	458
Ukuwela	37	36	37	678
Bowatenna	40	0	0	0
Upper Kotmale	150	150	150	2,452
Nilambe	3	2	3	74
Samanalawewa	120	120	121	1,901
Kukule	75	75	77	769
Inginiyagala	11	7	3	31
Udawalawe	6	3	3	56
Puttalam Coal I	270	270	272	6,104
Puttalam Coal II	270	0	0	0
Puttalam Coal III	270	270	270	5,938
KPS Small GTs	64	0	0	0
KPS GT 7	115	0	0	0
KCCP	161	0	0	0
Sapugaskanda A	70	51	0	0
Sapugaskanda B	70	63	0	0
Uthura Janani	26	24	0	149
Barge CEB	60	60	0	619
CEB-Thulhiriya	10	6	0	0
CEB-Kolonnawa	20	14	0	0
CEB-Mathugama	20	13	0	0
ACE Matara	24	24	0	0
Sojitz Kelanitissa	163	0	0	0
West Coast	270	270	0	0
ACE Embilipitiya	93	0	0	0
Total	3,397	2,415	1,999	40,456

Plant availability is the availability recorded at 6 am on

August 13, 2022

Contribution to the Night Peak in MW

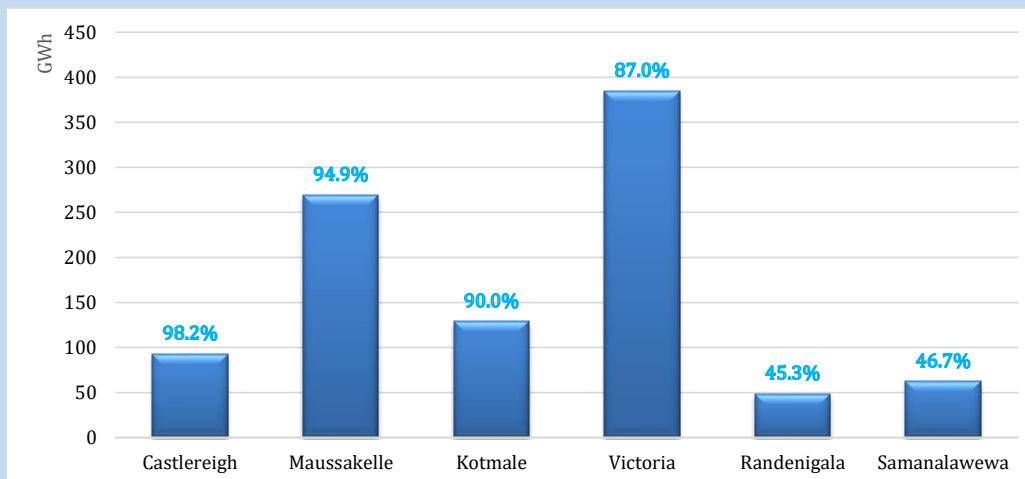
August 12, 2022



Night Peak*	1,982.2 MW
Day Peak	1,901.5 MW
Minimum Demand	1,197.7 MW

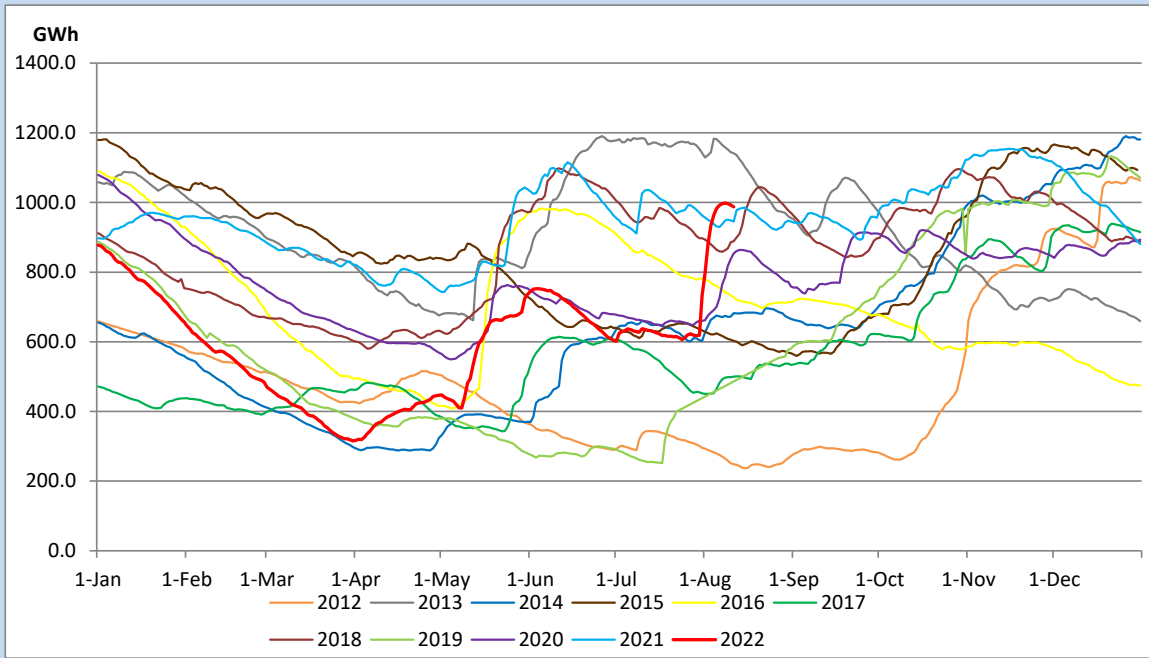
Above figures are excluding contribution from Roof Top Solar, 1MW solar, certain Wind plants and Mini Hydro plants

Reservoir Levels - as at 06.00 Hr on August 13, 2022

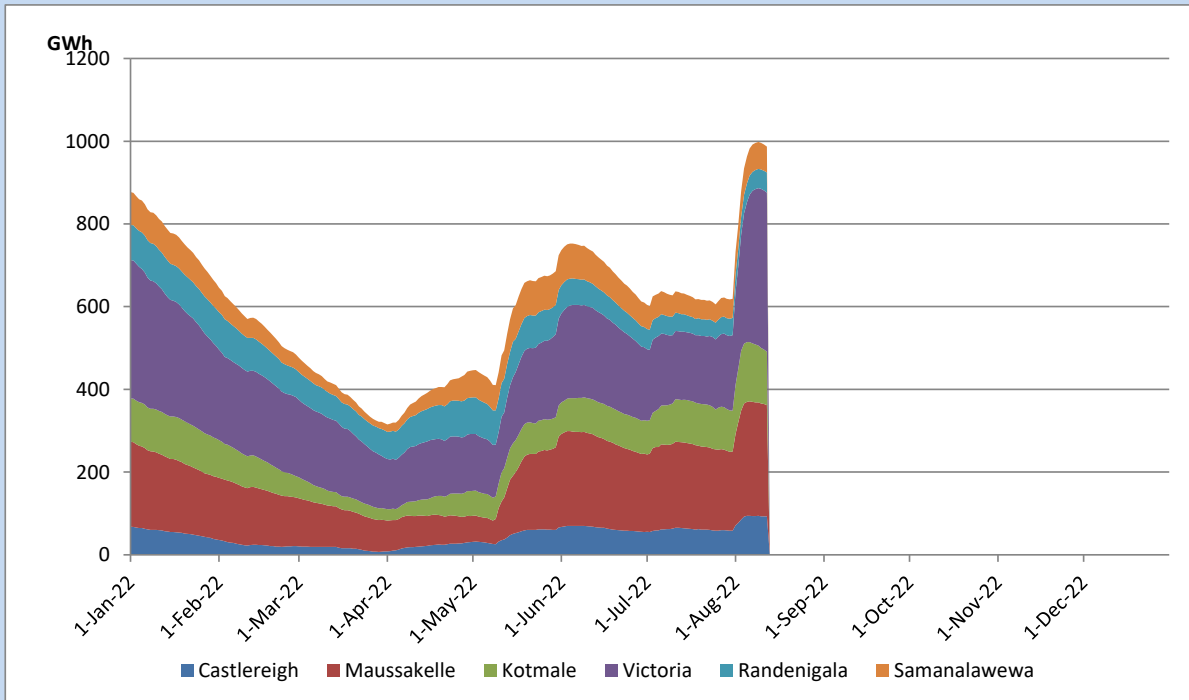


Total Reservoir Level	986.9 GWh
% of Total capacity	81.9%

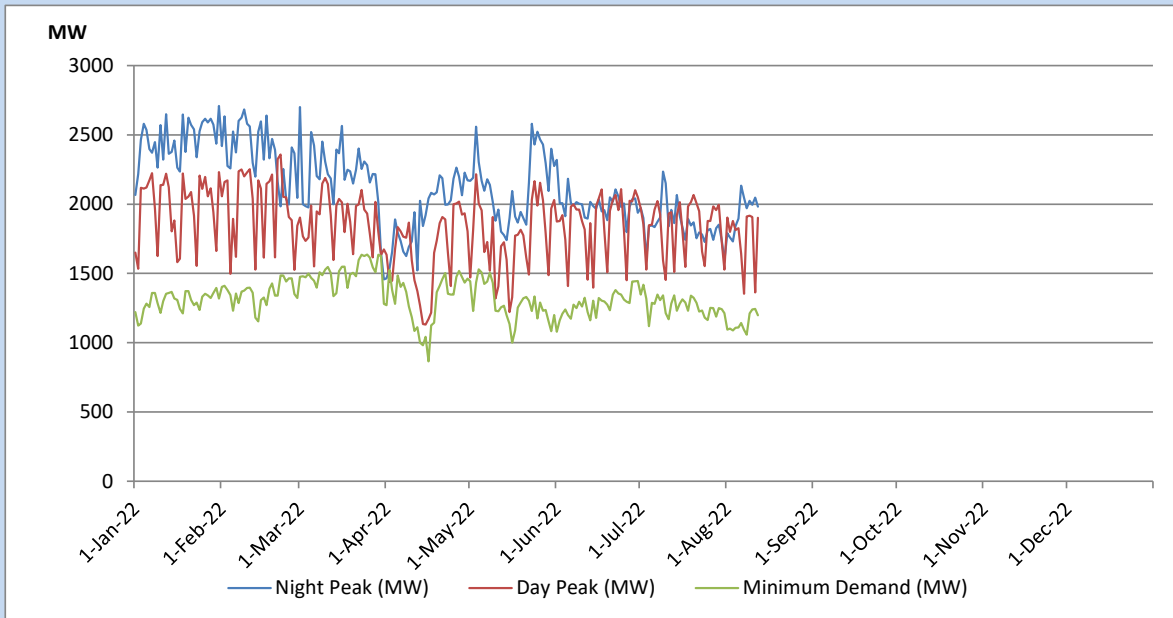
Comparison of Total Reservoir Storage Levels with Past Years



Variation of Major Hydro Reservoir Levels in the current year (GWh)



Variation of Demand during the current year

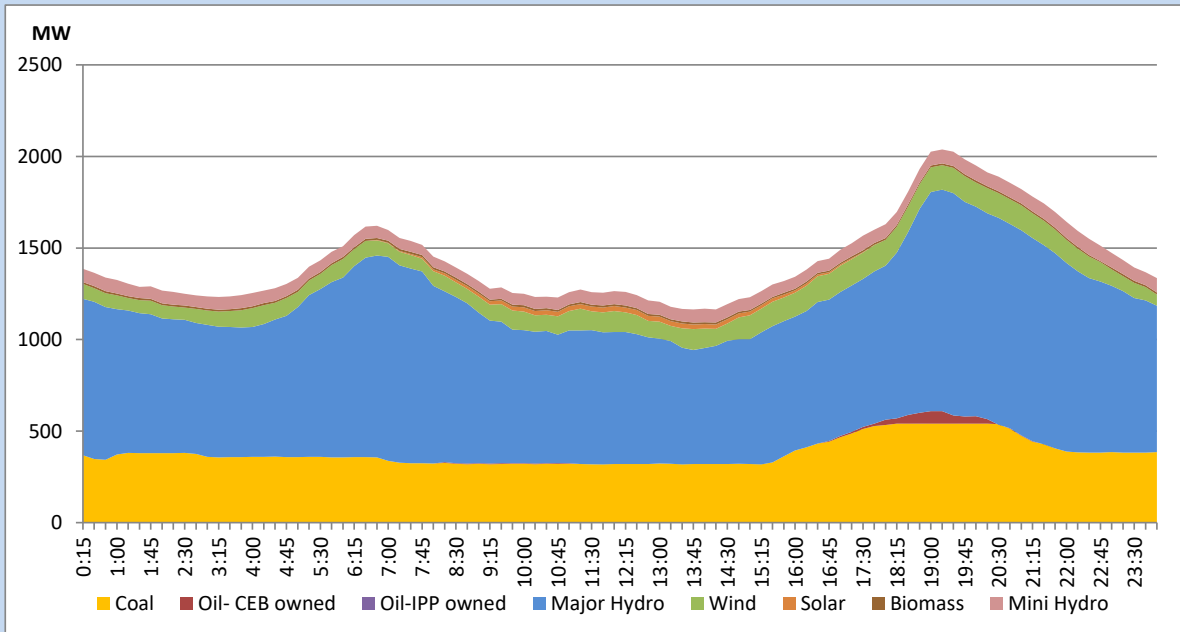


The above figures are excluding contribution from Roof Top Solar, 1MW solar, certain Wind plants and Mini Hydro plants

Daily Load Curve of the Previous day

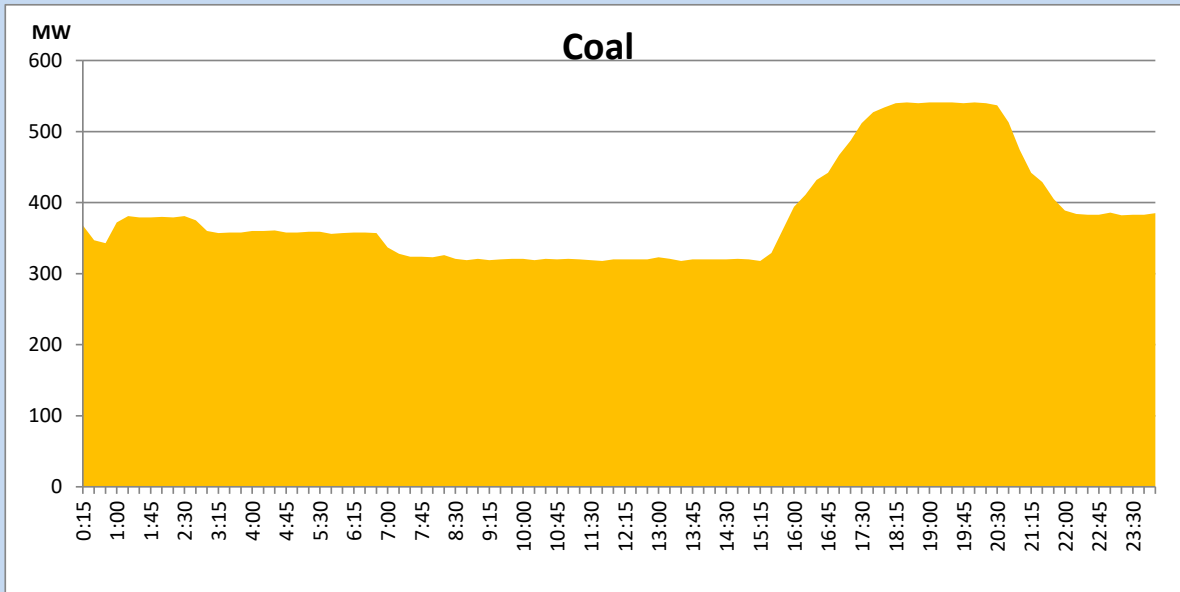
August 11, 2022

Solar and wind data is based on Telemetered Power Stations only



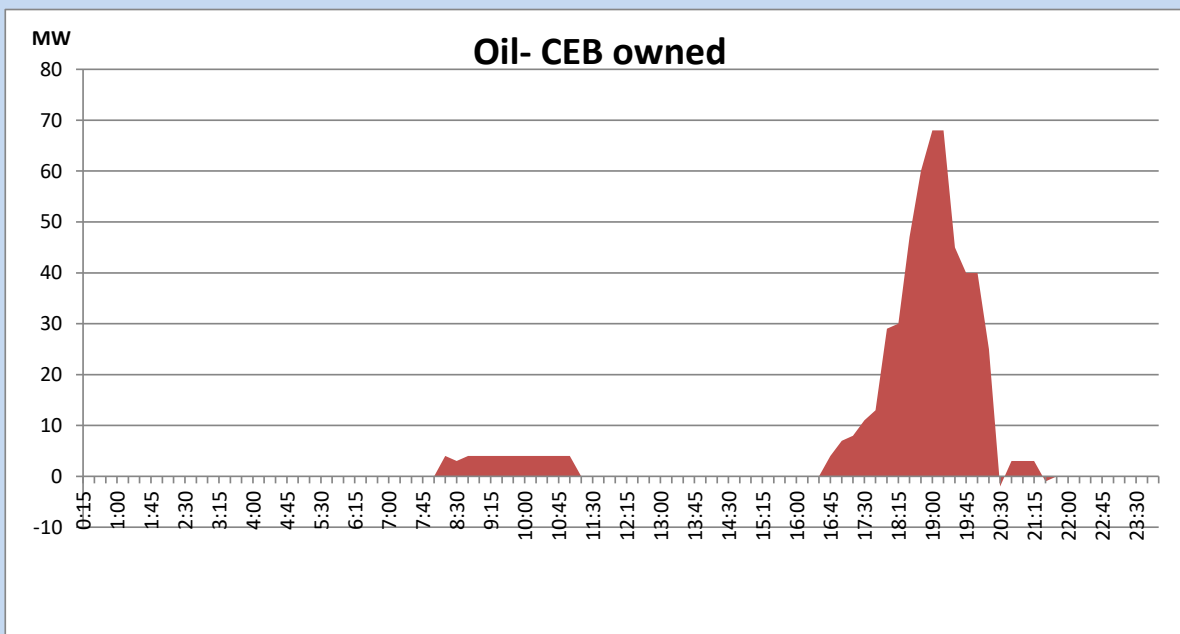
Coal Generation during the Previous day

August 11, 2022



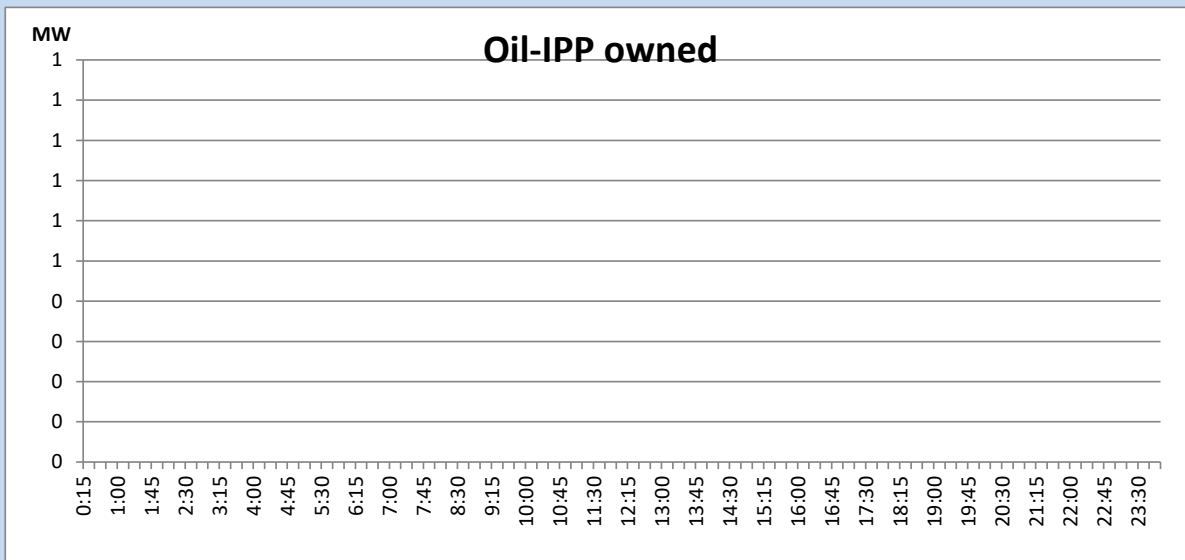
CEB Oil Plant Generation during the Previous day

August 11, 2022



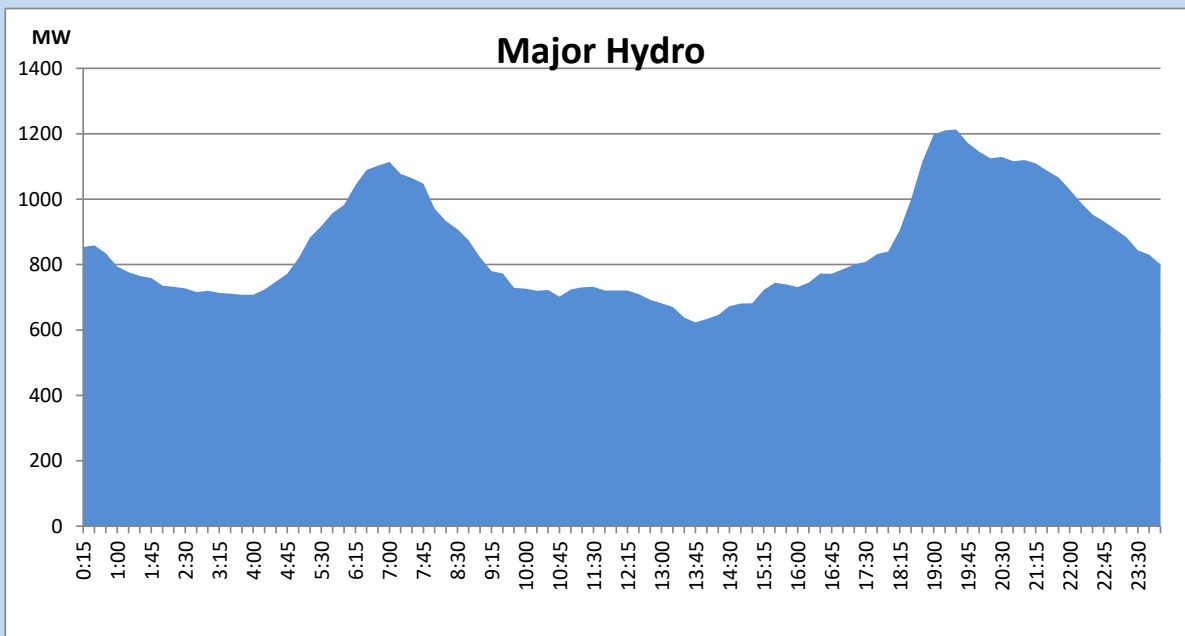
IPP Oil Plant Generation during the Previous day

August 11, 2022



Major Hydro Generation during the Previous day

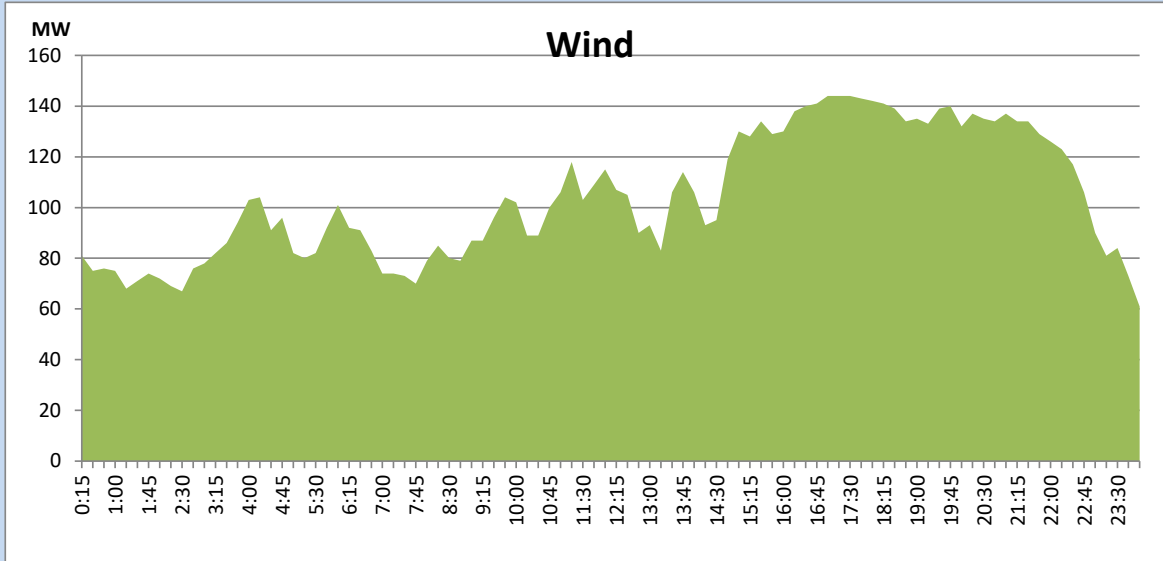
August 11, 2022



Wind Generation during the Previous day

August 11, 2022

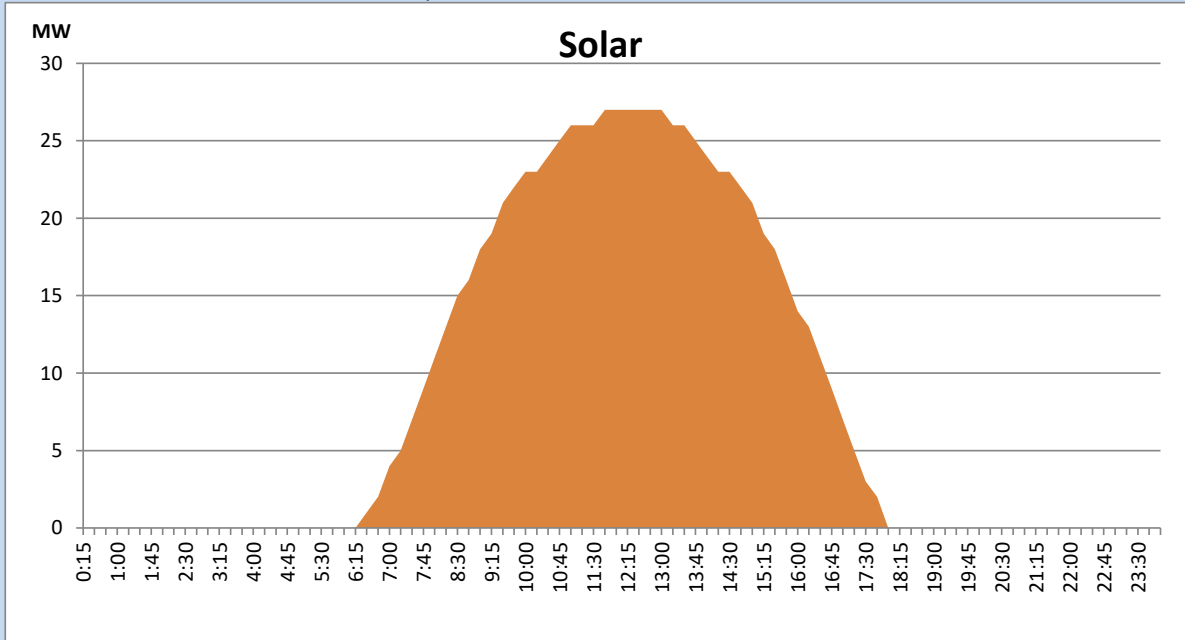
Based on Telemetered Power Stations only



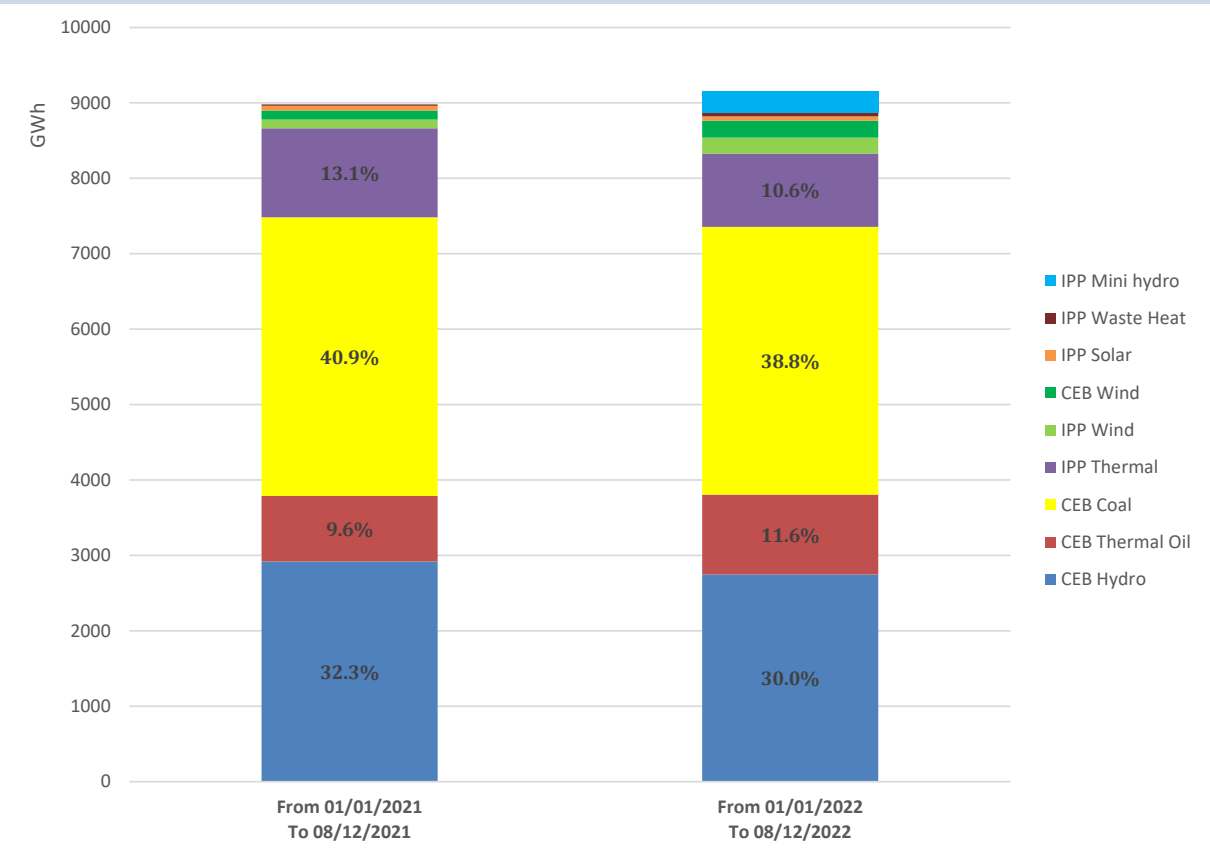
Solar Generation during the Previous day

August 11, 2022

Based on Telemetered Power Stations only



Cumulative Dispatch Comparison with Last Year



Thermal Plant Fuel types

Power Station	Primary Fuel
CEB Thermal	
Sapugaskanda 1	Heavy Fuel
Sapugaskanda 2	Heavy Fuel
Kelanitissa Small Gas Turbines	Auto Diesel
GT 7 - Kelanitissa	Auto Diesel
Kelanitissa CCY	Naphtha or Diesel
Lakvijaya 1	Coal
Lakvijaya 2	Coal
Lakvijaya 3	Coal
Uthuru Janani	Heavy Fuel
Barge CEB	Heavy Fuel

Power Station	Primary Fuel
Private Thermal	
Sojitz - Kelanitissa	Auto Diesel
West Coast	Auto Diesel / Heavy Fuel
ACE Matara	Heavy Fuel
ACE Embilipitiya	Heavy Fuel

Major Incidents during the day -as reported by CEB morning of

August 13, 2022

- 1) Rotational manual load shedding was carried out from 18:00hrs to 21:00hrs.
- 2) Madampe 132/33kV T/F 01 tripped along with 33kV feeder 12 at 09:22hrs due to the operation of Backup O/C & E/F protection. T/F 01 energized at 09:22hrs.
- 3) Madampe 132/33kV T/F 01 tripped again at 10:50hrs due to the operation of Backup O/C & E/F protection. At the same time T/F 03 tripped from the 33kV side due to the operation of O/C protection causing 33kV all feeders to be dead (T/F 02 released for maintenance works on 11/08/2022). Madampe T/F 03 energized at 11:11hrs and normalized the GSS. T/F 01 energized at 21:33hrs.