

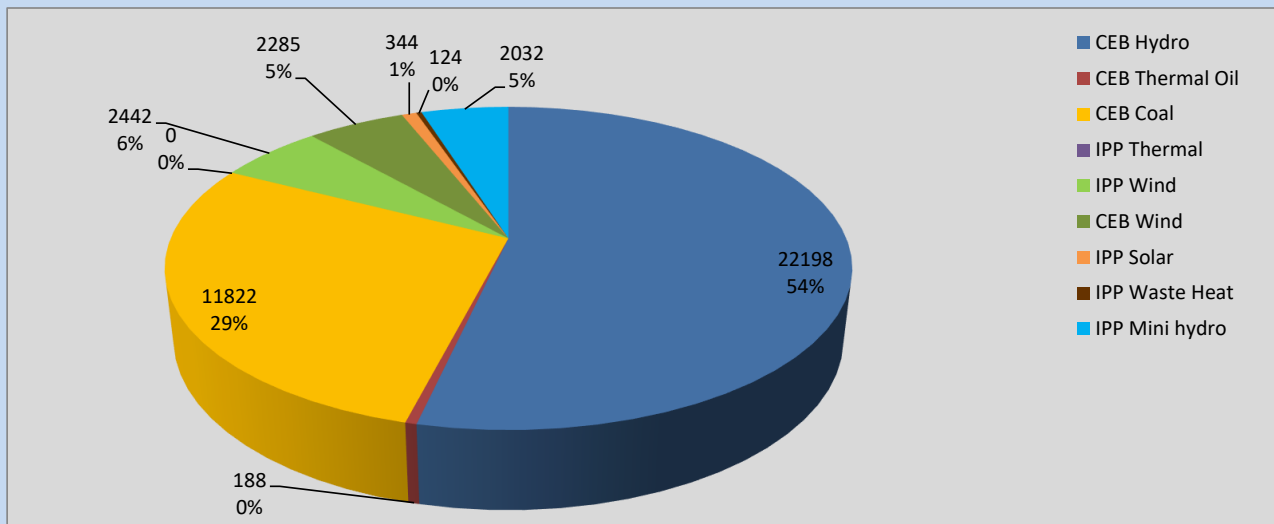
Generation and Reservoirs Statistics

August 9, 2022



PUBLIC UTILITIES COMMISSION OF SRI LANKA

Daily Generation Mix in MWh



Total Generation **41,435 MWh**

Note: Above data is excluding contribution from Roof Top Solar, 1MW Solar and certain Mini Hydro plants

Cumulative Dispatch

Note: Following data is Excluding contribution from Roof Top Solar, 1MW solar and Mini Hydro plants

For Current Month

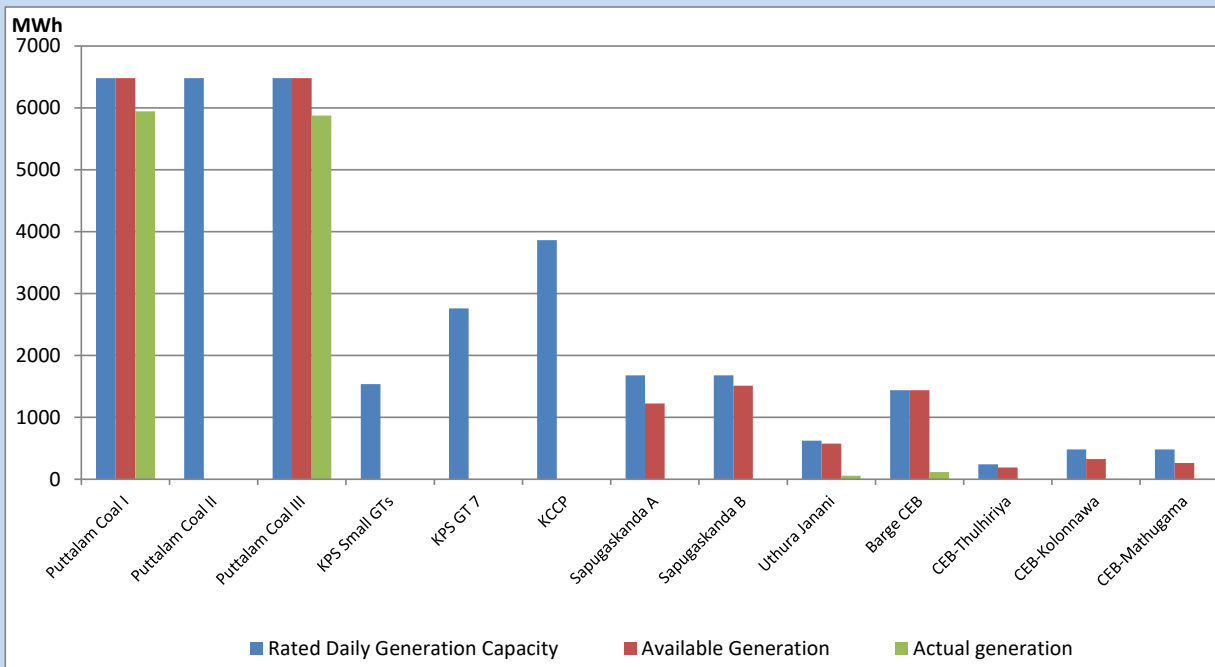
Category	Dispatch (GWh)	
CEB Hydro	181.64	52.84%
CEB Thermal Oil	4.46	1.30%
CEB Coal	97.69	28.42%
IPP Thermal	0.03	0.01%
SPP Wind	21.42	6.23%
CEB Wind	17.81	5.18%
SPP Solar	2.11	0.61%
SPP Solid Waste	0.50	0.15%
Mini Hydro	18.12	5.27%
Total	343.78	

For Current Year

Category	Dispatch (GWh)	
CEB Hydro	2,679.8	29.67%
CEB Thermal Oil	1,059.8	11.73%
CEB Coal	3,517.3	38.94%
IPP Thermal	972.5	10.77%
SPP Wind	205.4	2.27%
CEB Wind	219.1	2.43%
SPP Solar	56.1	0.62%
SPP Solid Waste	44.6	0.49%
Mini Hydro	279.1	3.09%
Total	9,033.4	

CEB owned Thermal Plant Dispatch

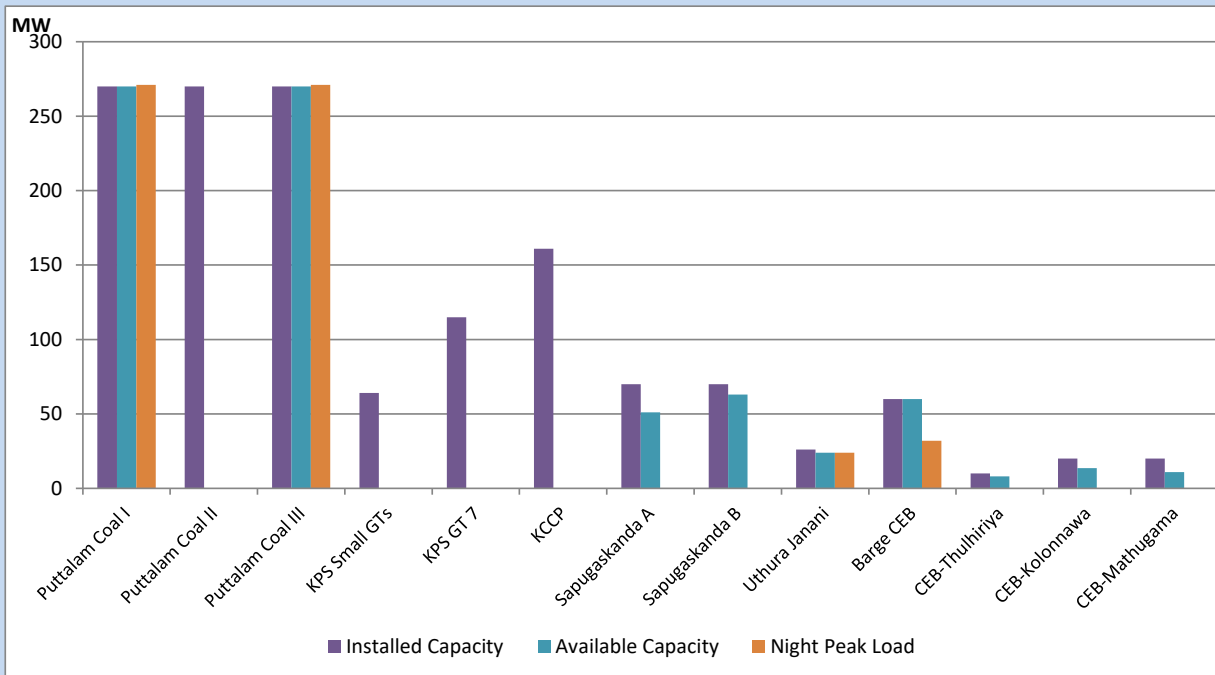
August 9, 2022



Available Generation is estimated based on plant availability at 6.00am on

August 10, 2022

CEB owned Thermal Plant Loading at the Night Peak



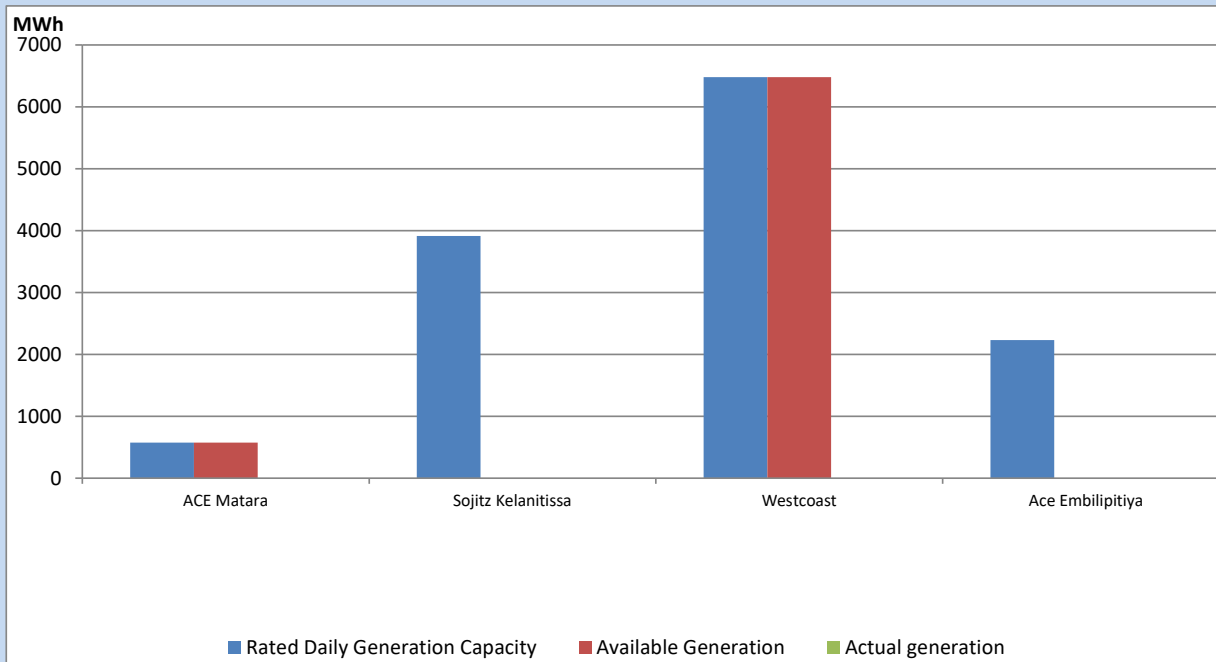
Note- Plant availability is recorded at 6.00 am on

August 10, 2022

IPP owned Thermal Plant Dispatch

August 9, 2022

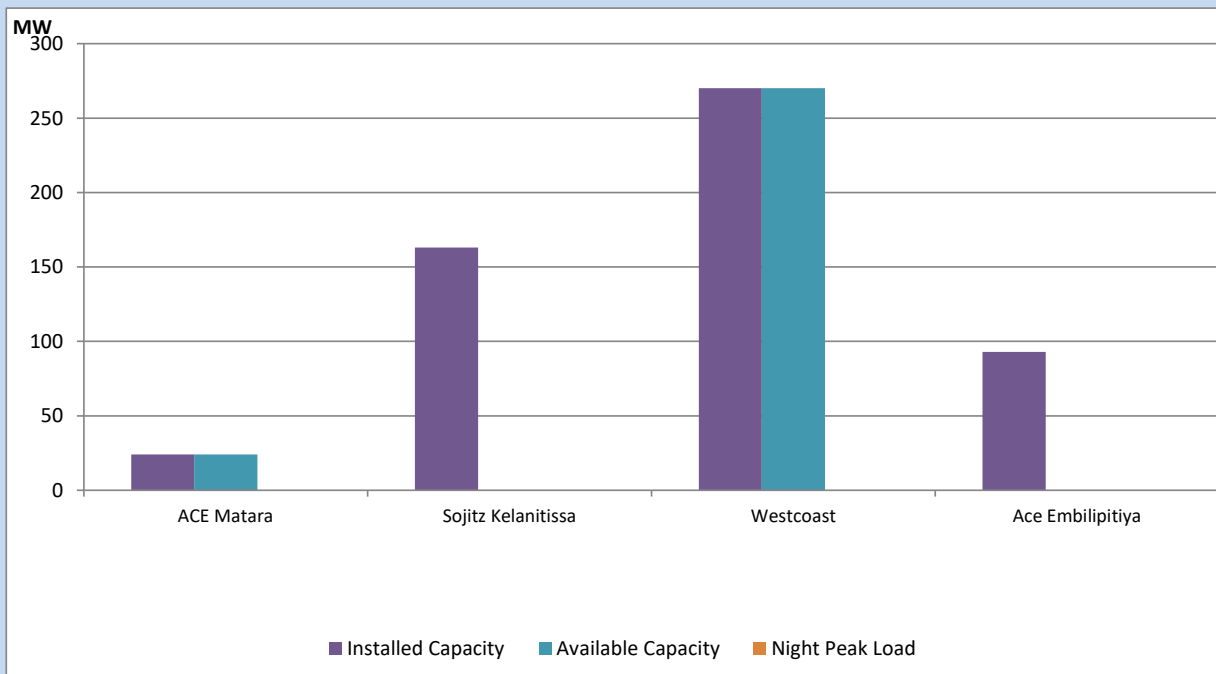
Asia Power, V Power Pallekale, Vpower Galle, V Power Horana, Vpower Hambantota, Vpower Valachchena and Altaqa Mahiyanganaya are not available due to expiration of PPAs



Available Generation is estimated based on plant availability at 6.00am on

August 10, 2022

IPP owned Thermal Plant Loading at the Night Peak

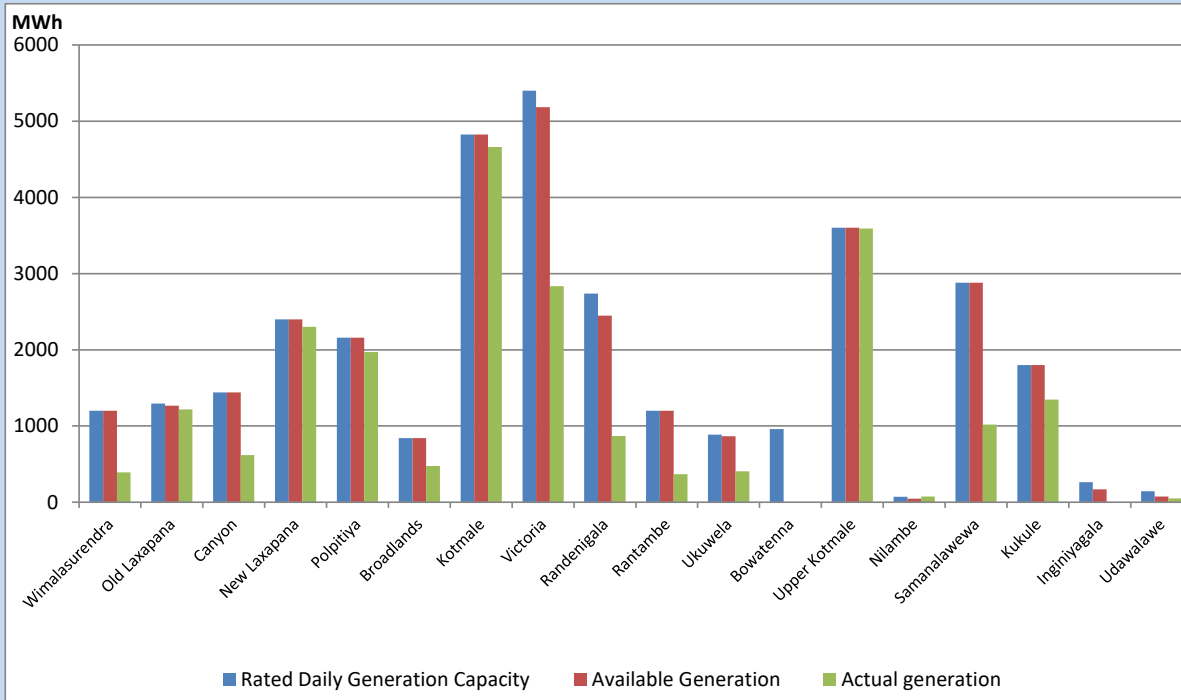


Note- Plant availability is recorded at 6.00 am on

August 10, 2022

Major Hydro Plant Dispatch

August 9, 2022

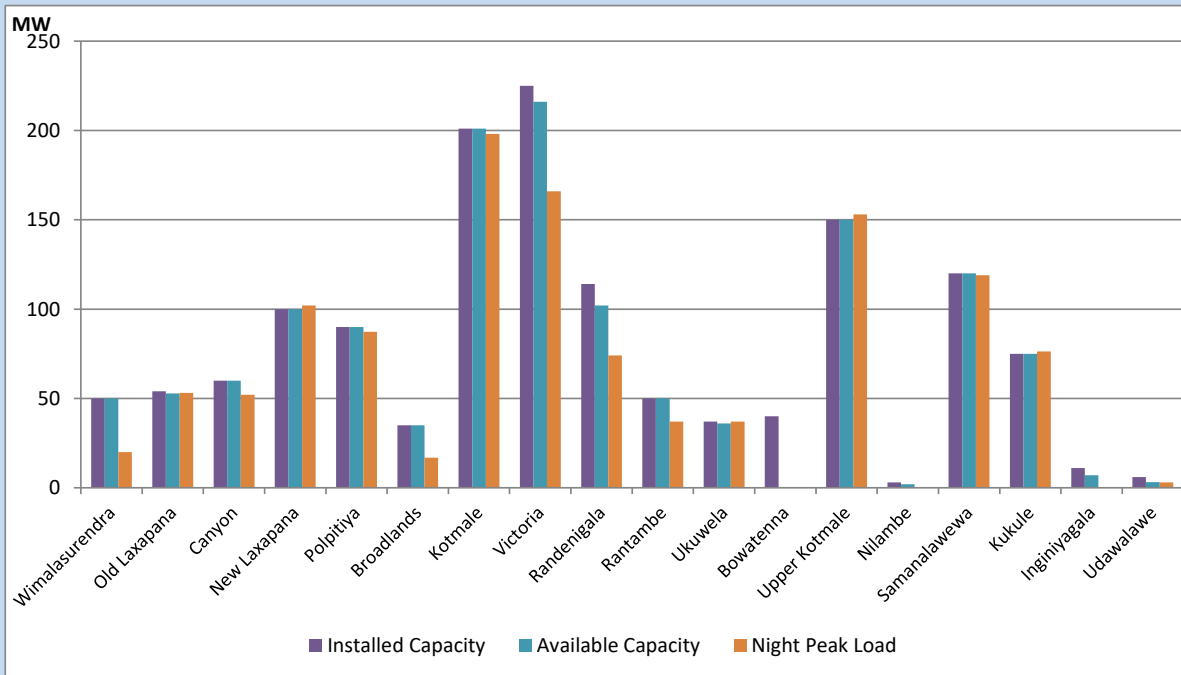


Available Generation is estimated based on plant availability at 6.00am on August 10, 2022
 Broadlands power plant is operating in the Commissioning Stage

August 10, 2022

Major Hydro Plant Loading at Night Peak

August 9, 2022



Note- Plant availability is recorded at 6.00 am on August 10, 2022
 Broadlands power plant is operating in the Commissioning Stage

Summary of Major Plant performance

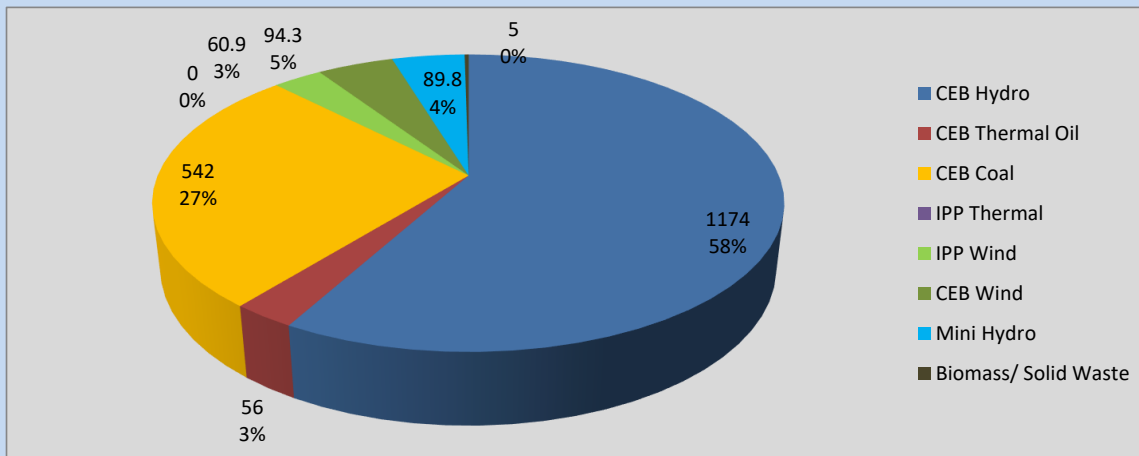
Plant	Installed Capacity	Plant Availability	Night peak Load	Plant Dispatch
	(MW)	(MW)	(MW)	(MWh)
Wimalasurendra	50	50	20	390
Old Laxapana	54	53	53	1,219
Canyon	60	60	52	618
New Laxapana	100	100	102	2,302
Polpitiya	90	90	87	1,972
Broadlands	35	35	17	474
Kotmale	201	201	198	4,660
Victoria	225	216	166	2,835
Randenigala	114	102	74	868
Rantambe	50	50	37	369
Ukuwela	37	36	37	406
Bowatenna	40	0	0	0
Upper Kotmale	150	150	153	3,592
Nilambe	3	2	0	76
Samanalawewa	120	120	119	1,018
Kukule	75	75	76	1,348
Inginiyagala	11	7	0	0
Udawalawe	6	3	3	51
Puttalam Coal I	270	270	271	5,945
Puttalam Coal II	270	0	0	0
Puttalam Coal III	270	270	271	5,877
KPS Small GTs	64	0	0	0
KPS GT 7	115	0	0	0
KCCP	161	0	0	0
Sapugaskanda A	70	51	0	0
Sapugaskanda B	70	63	0	0
Uthura Janani	26	24	24	56
Barge CEB	60	60	32	116
CEB-Thulhiriya	10	8	0	4
CEB-Kolonnawa	20	14	0	7
CEB-Mathugama	20	11	0	5
ACE Matara	24	24	0	0
Sojitz Kelanitissa	163	0	0	0
West Coast	270	270	0	0
ACE Embilipitiya	93	0	0	0
Total	3,397	2,415	2,045	41,435

Plant availability is the availability recorded at 6 am on

August 10, 2022

Contribution to the Night Peak in MW

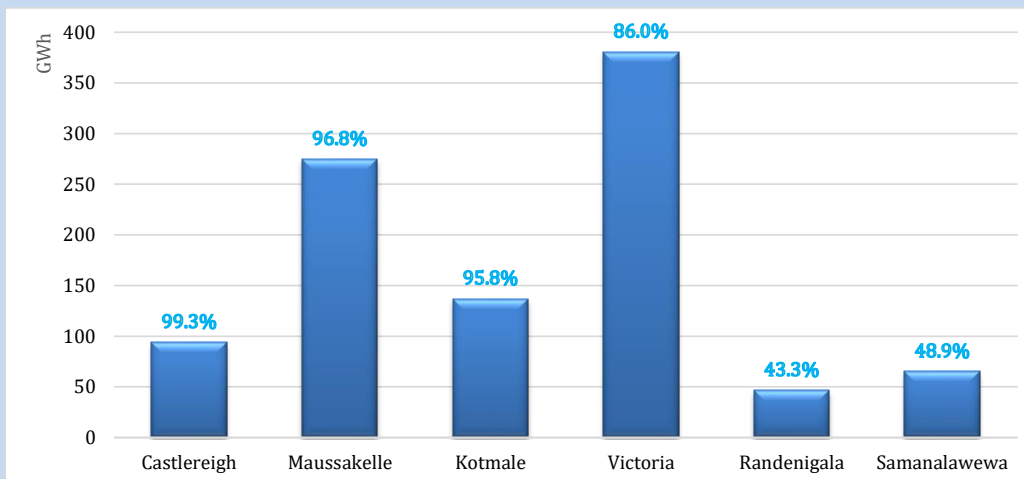
August 9, 2022



Night Peak*	2,024.3 MW
Day Peak	1,916.1 MW
Minimum Demand	1,211.7 MW

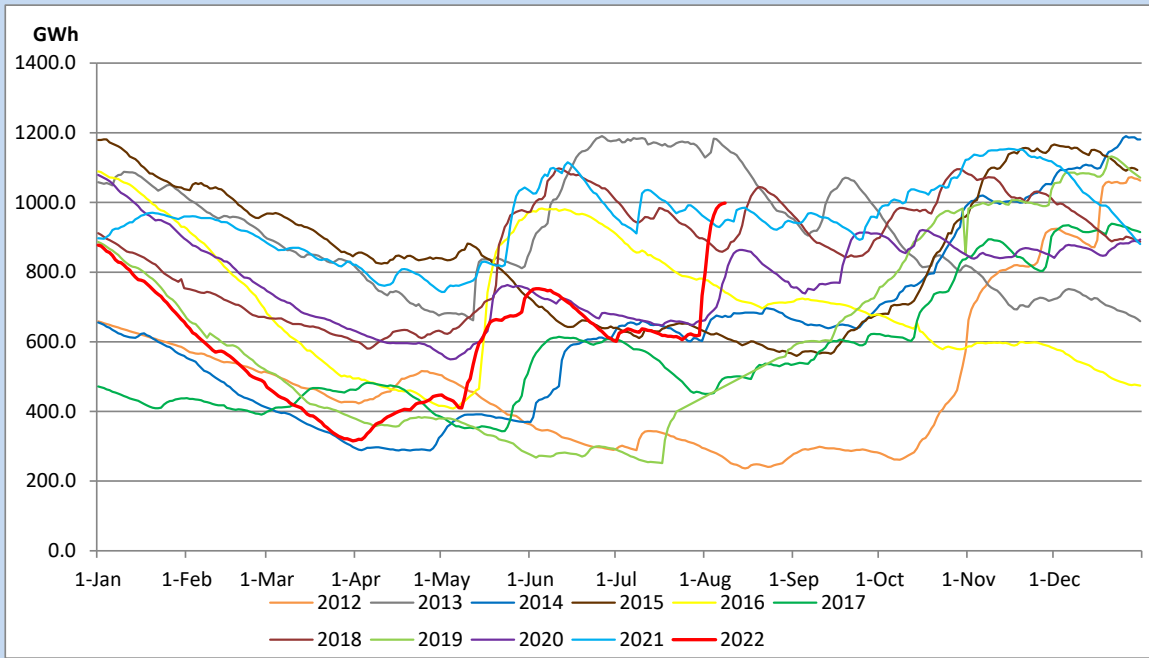
Above figures are excluding contribution from Roof Top Solar, 1MW solar, certain Wind plants and Mini Hydro plants

Reservoir Levels - as at 06.00 Hr on August 10, 2022

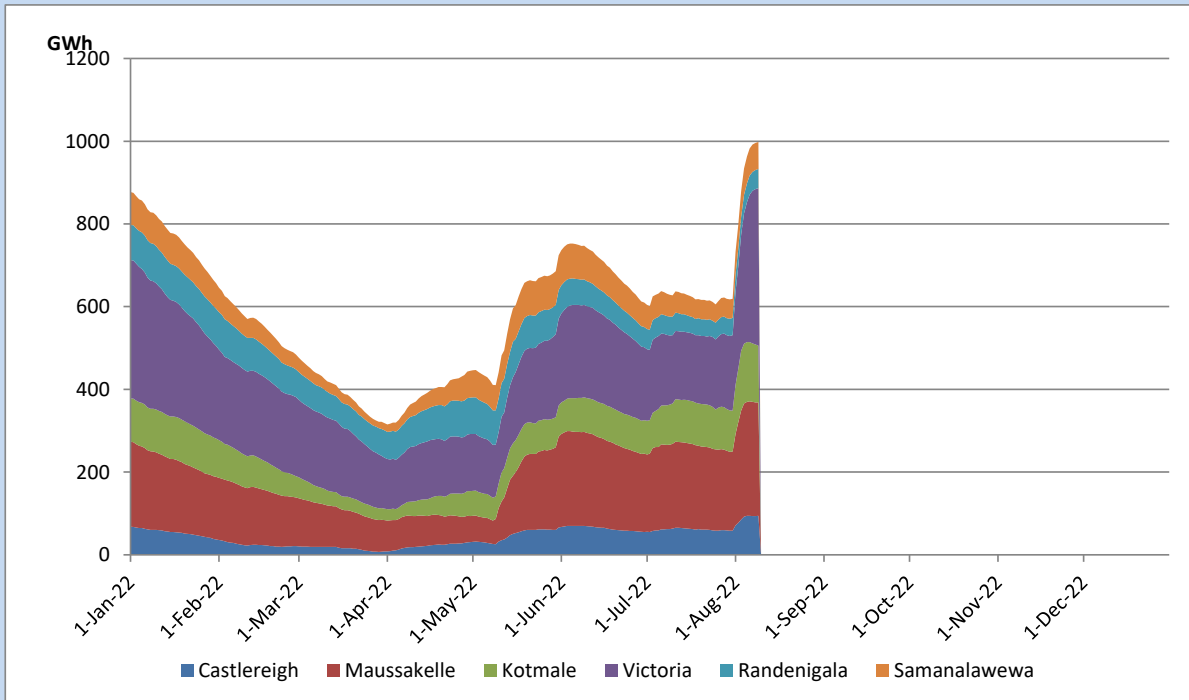


Total Reservoir Level	998.2 GWh
% of Total capacity	82.8%

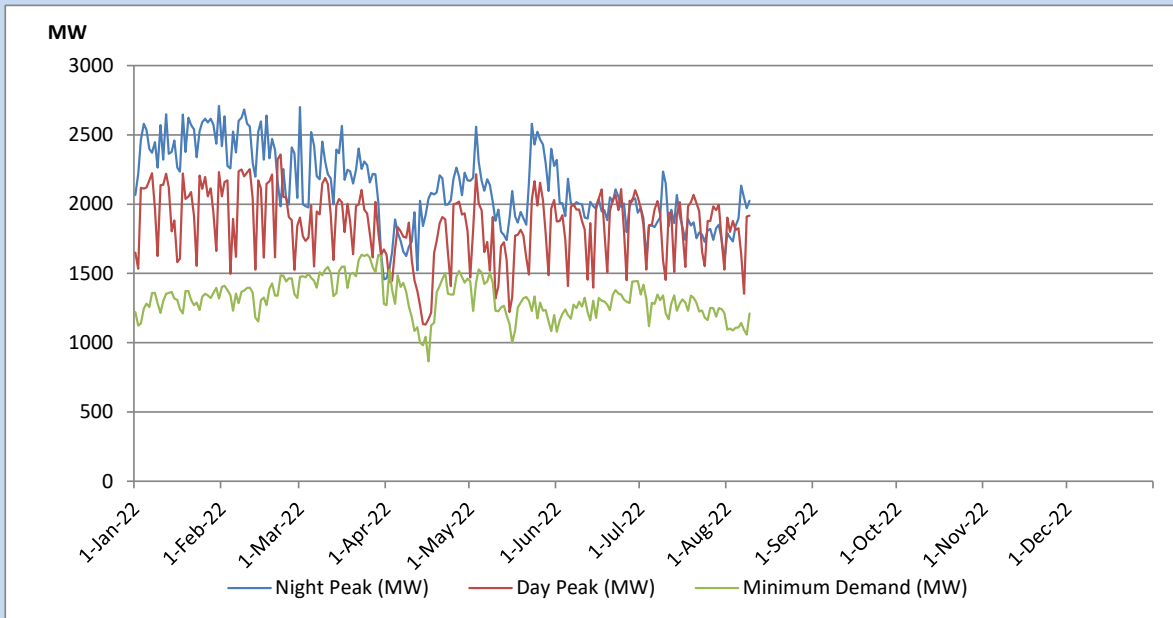
Comparison of Total Reservoir Storage Levels with Past Years



Variation of Major Hydro Reservoir Levels in the current year (GWh)



Variation of Demand during the current year

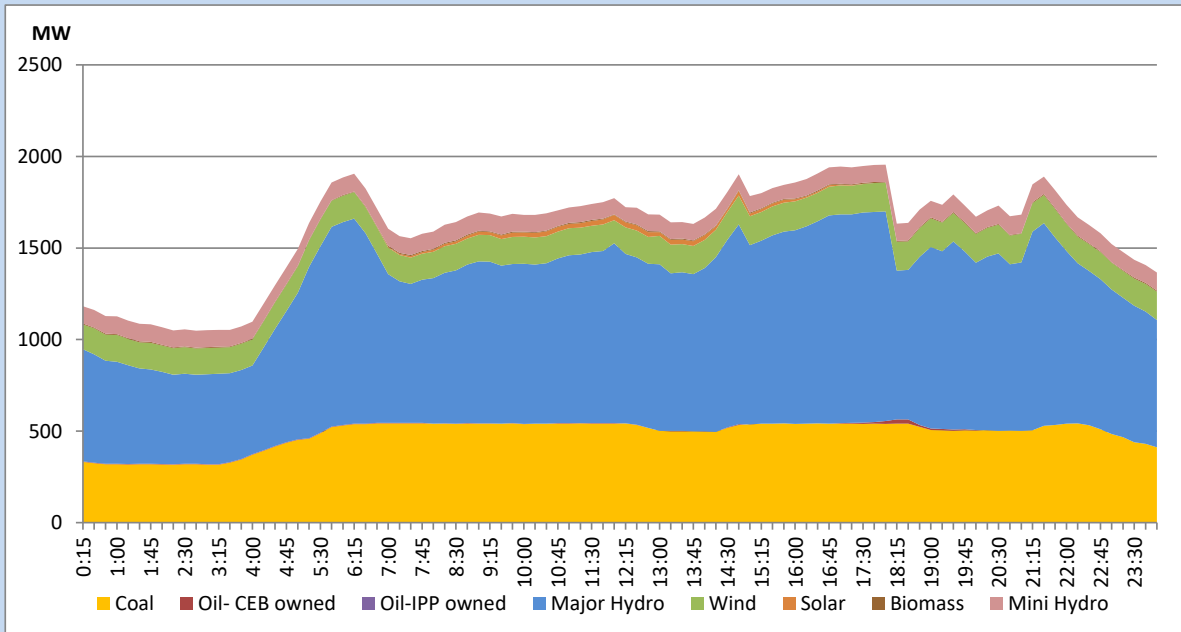


The above figures are excluding contribution from Roof Top Solar, 1MW solar, certain Wind plants and Mini Hydro plants

Daily Load Curve of the Previous day

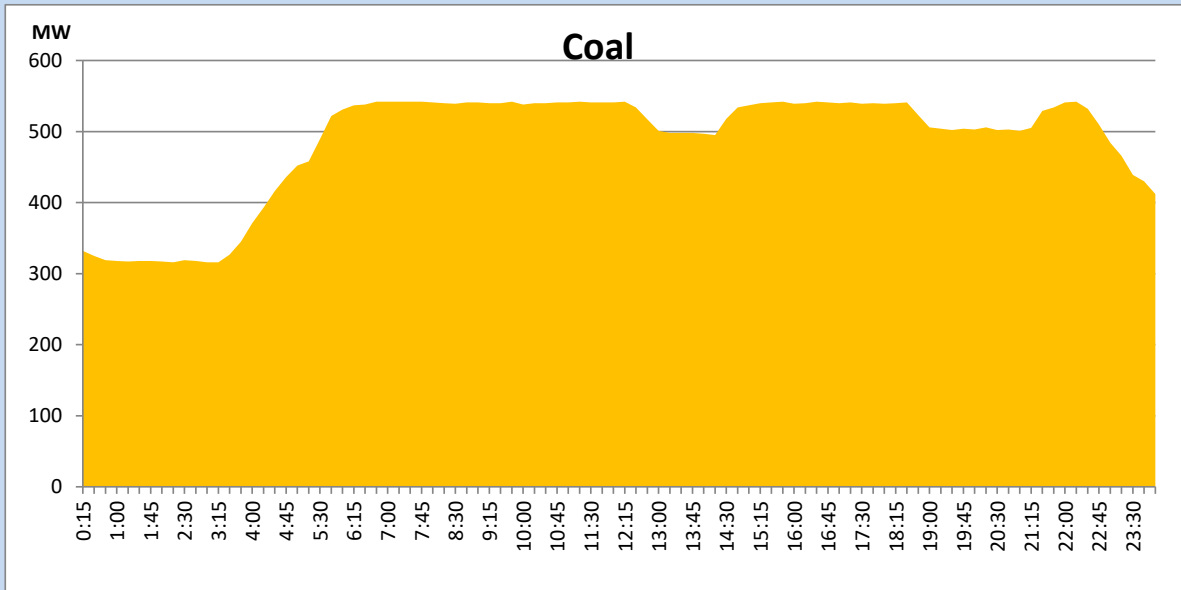
August 8, 2022

Solar and wind data is based on Telemetered Power Stations only



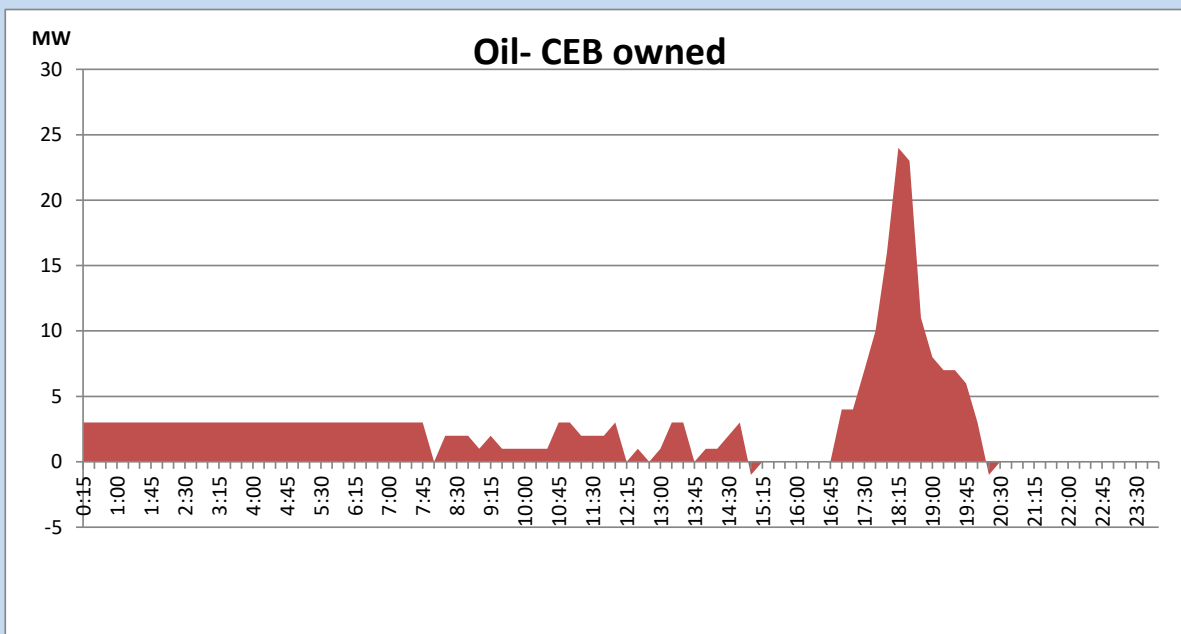
Coal Generation during the Previous day

August 8, 2022



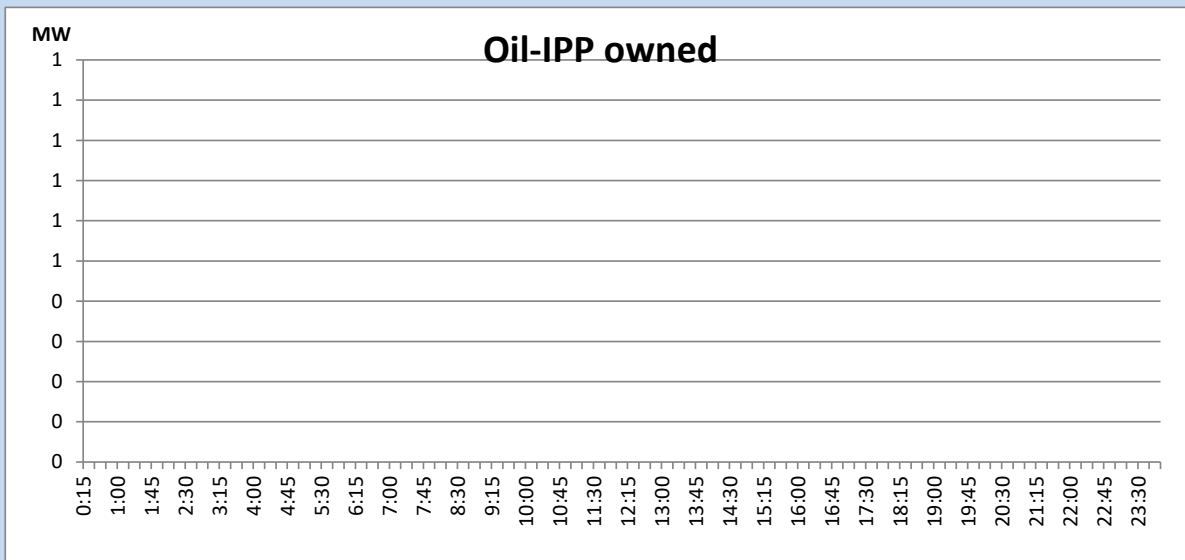
CEB Oil Plant Generation during the Previous day

August 8, 2022



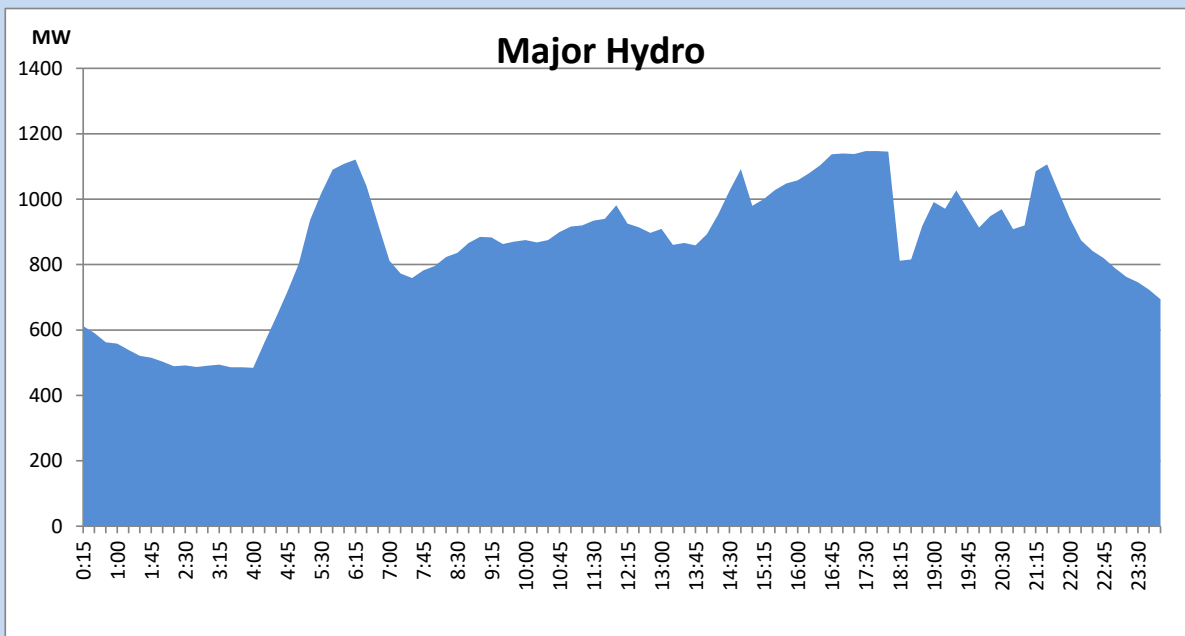
IPP Oil Plant Generation during the Previous day

August 8, 2022



Major Hydro Generation during the Previous day

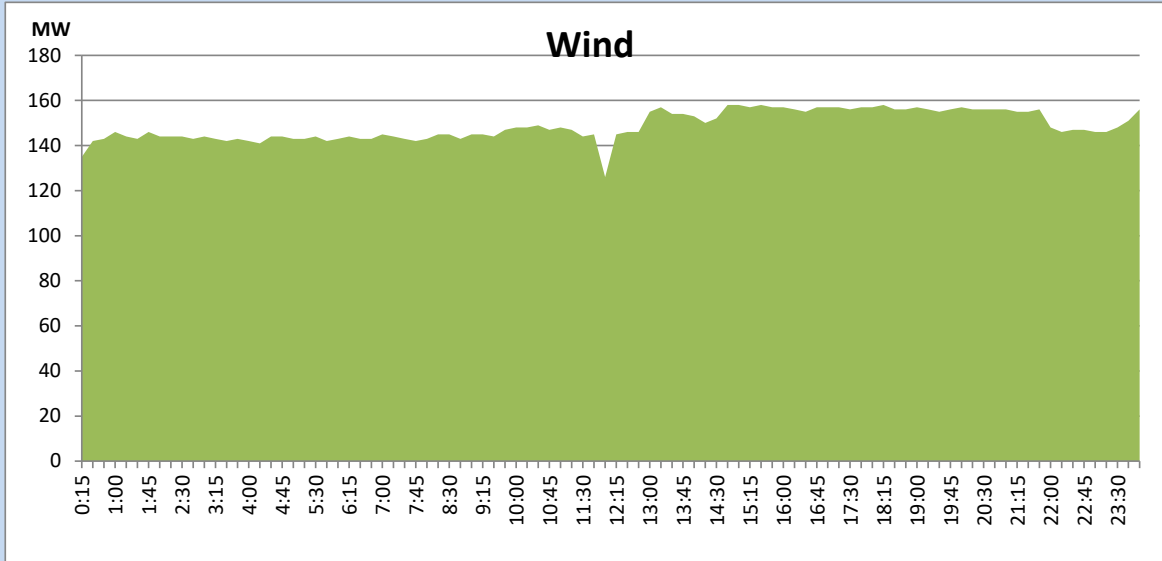
August 8, 2022



Wind Generation during the Previous day

August 8, 2022

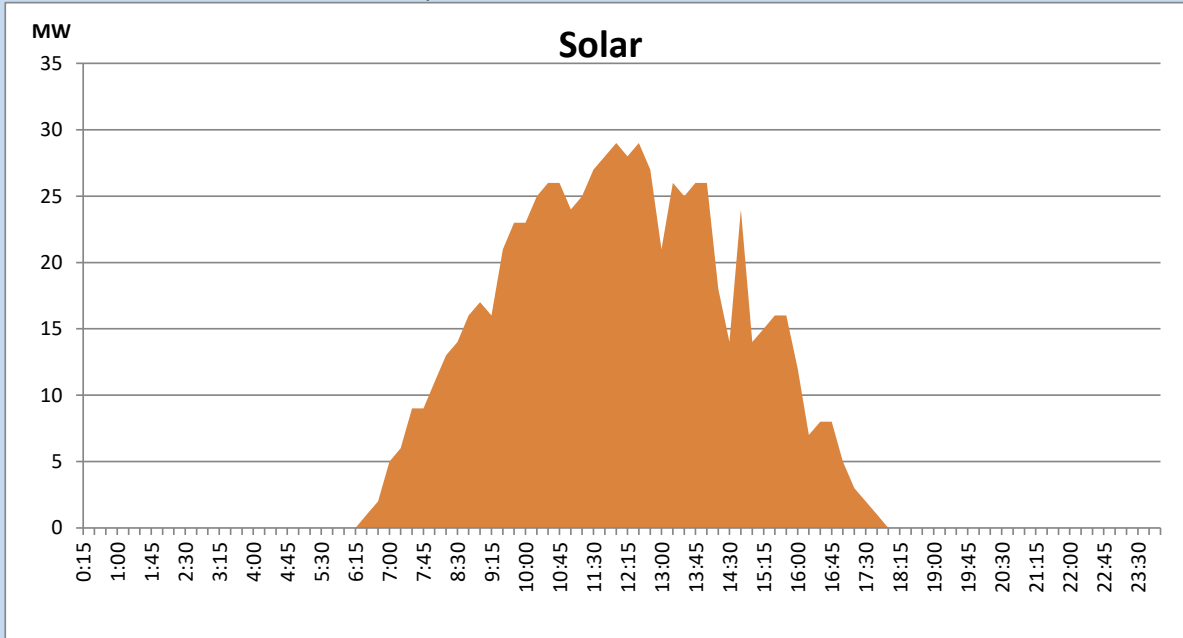
Based on Telemetered Power Stations only



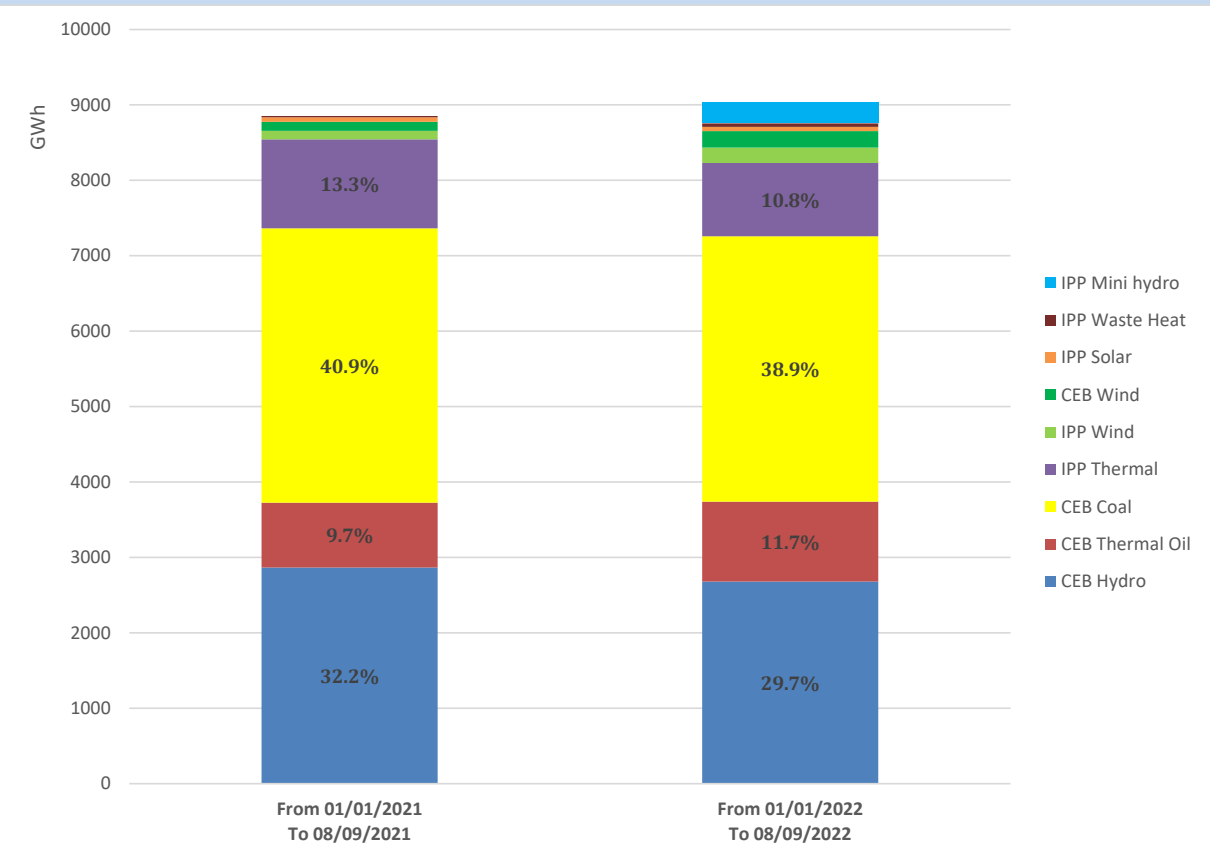
Solar Generation during the Previous day

August 8, 2022

Based on Telemetered Power Stations only



Cumulative Dispatch Comparison with Last Year



Thermal Plant Fuel types

Power Station	Primary Fuel
CEB Thermal	
Sapugaskanda 1	Heavy Fuel
Sapugaskanda 2	Heavy Fuel
Kelanitissa Small Gas Turbines	Auto Diesel
GT 7 - Kelanitissa	Auto Diesel
Kelanitissa CCY	Naphtha or Diesel
Lakvijaya 1	Coal
Lakvijaya 2	Coal
Lakvijaya 3	Coal
Uthuru Janani	Heavy Fuel
Barge CEB	Heavy Fuel

Power Station	Primary Fuel
Private Thermal	
Sojitz - Kelanitissa	Auto Diesel
West Coast	Auto Diesel / Heavy Fuel
ACE Matara	Heavy Fuel
ACE Embilipitiya	Heavy Fuel

Major Incidents during the day -as reported by CEB morning of

August 10, 2022

- 1) Rotational manual load shedding was carried out from 18:00hrs to 21:00hrs.
- 2) Madampe 132/33kV T/F 01 & 03 tripped at 8:28 hrs with O/C and E/F indication causing all 33kV feeders of the GSS to be dead (The T/F 02 had been released for maintenance). All affected feeders were normalized by 9:06 hrs through T/F 02 & 03. The T/F 01 was normalized at 9:43 hrs.
- 3) Norton pond spilling started at 16:37 hrs and stopped at 18:45 hrs. Norton pond spilling started again at 19:38 hrs and stopped at 20:06 hrs.